



# wwPDB X-ray Structure Validation Summary Report ⓘ

Feb 14, 2017 – 06:50 pm GMT

PDB ID : 2BXG  
Title : HUMAN SERUM ALBUMIN COMPLEXED WITH IBUPROFEN  
Authors : Ghuman, J.; Zunszain, P.A.; Petitpas, I.; Bhattacharya, A.A.; Curry, S.  
Deposited on : 2005-07-26  
Resolution : 2.70 Å(reported)

This is a wwPDB X-ray Structure Validation Summary Report for a publicly released PDB entry.

We welcome your comments at [validation@mail.wwpdb.org](mailto:validation@mail.wwpdb.org)

A user guide is available at

<http://wwpdb.org/validation/2016/XrayValidationReportHelp>

with specific help available everywhere you see the ⓘ symbol.

---

The following versions of software and data (see [references ⓘ](#)) were used in the production of this report:

MolProbity	:	4.02b-467
Mogul	:	1.7.2 (RC1), CSD as538be (2017)
Xtriage (Phenix)	:	1.9-1692
EDS	:	trunk28620
Percentile statistics	:	20161228.v01 (using entries in the PDB archive December 28th 2016)
Refmac	:	5.8.0135
CCP4	:	6.5.0
Ideal geometry (proteins)	:	Engh & Huber (2001)
Ideal geometry (DNA, RNA)	:	Parkinson et al. (1996)
Validation Pipeline (wwPDB-VP)	:	recalc28949

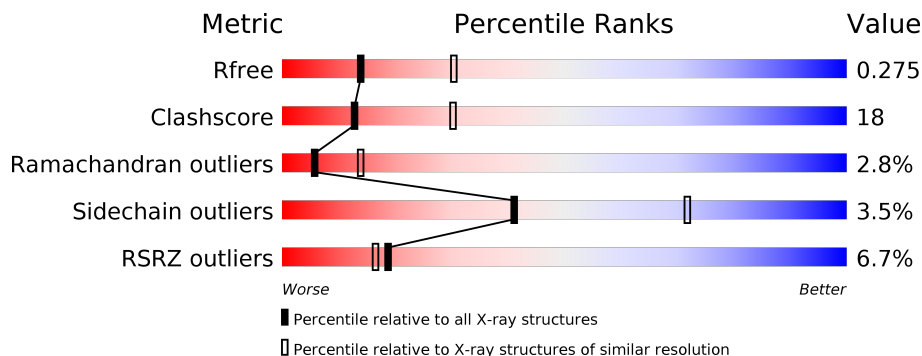
# 1 Overall quality at a glance

The following experimental techniques were used to determine the structure:

## *X-RAY DIFFRACTION*

The reported resolution of this entry is 2.70 Å.

Percentile scores (ranging between 0-100) for global validation metrics of the entry are shown in the following graphic. The table shows the number of entries on which the scores are based.



Metric	Whole archive (#Entries)	Similar resolution (#Entries, resolution range(Å))
$R_{free}$	100719	2259 (2.70-2.70)
Clashscore	112137	2590 (2.70-2.70)
Ramachandran outliers	110173	2550 (2.70-2.70)
Sidechain outliers	110143	2550 (2.70-2.70)
RSRZ outliers	101464	2275 (2.70-2.70)

The table below summarises the geometric issues observed across the polymeric chains and their fit to the electron density. The red, orange, yellow and green segments on the lower bar indicate the fraction of residues that contain outliers for  $\geq 3$ , 2, 1 and 0 types of geometric quality criteria. A grey segment represents the fraction of residues that are not modelled. The numeric value for each fraction is indicated below the corresponding segment, with a dot representing fractions  $\leq 5\%$ . The upper red bar (where present) indicates the fraction of residues that have poor fit to the electron density. The numeric value is given above the bar.

Mol	Chain	Length	Quality of chain
1	A	585	<div> <div>6%</div> <div>66%</div> <div>30%</div> <div>..</div> </div>
1	B	585	<div> <div>7%</div> <div>59%</div> <div>37%</div> <div>..</div> </div>

The following table lists non-polymeric compounds, carbohydrate monomers and non-standard residues in protein, DNA, RNA chains that are outliers for geometric or electron-density-fit criteria:

Mol	Type	Chain	Res	Chirality	Geometry	Clashes	Electron density
2	IBP	A	2001	-	-	-	X
2	IBP	B	2001	-	-	-	X

## 2 Entry composition [i](#)

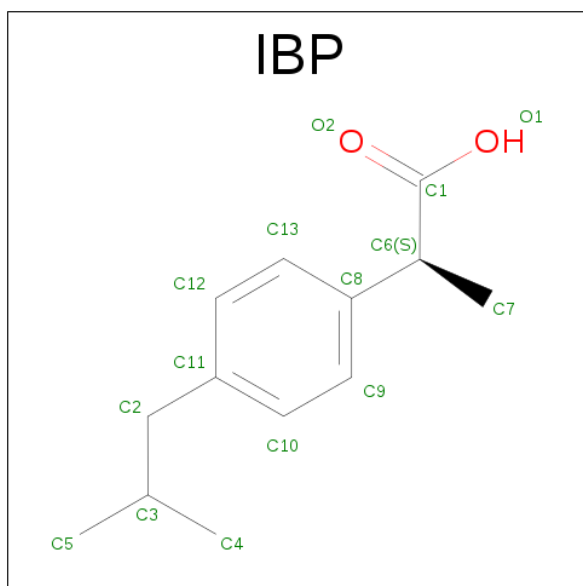
There are 2 unique types of molecules in this entry. The entry contains 8773 atoms, of which 0 are hydrogens and 0 are deuteriums.

In the tables below, the ZeroOcc column contains the number of atoms modelled with zero occupancy, the AltConf column contains the number of residues with at least one atom in alternate conformation and the Trace column contains the number of residues modelled with at most 2 atoms.

- Molecule 1 is a protein called SERUM ALBUMIN.

Mol	Chain	Residues	Atoms					ZeroOcc	AltConf	Trace
1	A	578	Total	C	N	O	S	0	0	0
			4360	2743	738	839	40			
1	B	578	Total	C	N	O	S	0	0	0
			4353	2739	730	843	41			

- Molecule 2 is IBUPROFEN (three-letter code: IBP) (formula: C<sub>13</sub>H<sub>18</sub>O<sub>2</sub>).



Mol	Chain	Residues	Atoms			ZeroOcc	AltConf
2	A	1	Total	C	O	0	0
			15	13	2		
2	A	1	Total	C	O	0	0
			15	13	2		
2	B	1	Total	C	O	0	0
			15	13	2		
2	B	1	Total	C	O	0	0
			15	13	2		



E292	E396	R484	E565
V293	Q397	R485	T566
	L398	P486	C567
D296	G399		F568
E297	E400	S489	A569
	Y401		E570
A300	K402	E501	E571
	F403	F502	G572
L305	Q404	N503	A573
E311	L408	A504	
S312	V409	E505	V576
K313		T506	A577
D314	T412	F507	A578
	K413	T508	S579
N318		F509	
Y319	P416	H510	A582
	Q417	A511	LEU
K323	V418	D512	GLY
D324	S419	I513	LEU
	T420	C514	
Y332	L423	T515	
E333	V424	L516	
		S517	
R336	R428	E518	
	V433	K519	
S342	C438	E520	
V343	P447	R521	
V344	E450	T527	
	D451	V530	
P366	Y452	E531	
H367	V455	L532	
	V456	K536	
Y370	L457	A539	
A371	N458	T540	
K372	Q459	K541	
V373		E542	
F374	V462	Q543	
D375	L463	L544	
	H464	K545	
K378	E465	A546	
P379	V469	V547	
L380		M548	
V381	R472	D549	
E382	K475	D550	
P384		F554	
	T478	V555	
L387	E479	E556	
I388	S480	K557	
	L481	C558	
C392	V482	C559	
E393	N483	K560	
L394		A561	
F395		D562	
		D563	
		K564	

## 4 Data and refinement statistics

Property	Value	Source
Space group	P 1	Depositor
Cell constants a, b, c, $\alpha$ , $\beta$ , $\gamma$	55.32Å 55.44Å 120.14Å 81.19° 90.34° 65.93°	Depositor
Resolution (Å)	22.34 – 2.70 22.46 – 2.70	Depositor EDS
% Data completeness (in resolution range)	95.8 (22.34-2.70) 90.5 (22.46-2.70)	Depositor EDS
$R_{merge}$	0.05	Depositor
$R_{sym}$	(Not available)	Depositor
$\langle I/\sigma(I) \rangle$ <sup>1</sup>	2.89 (at 2.71Å)	Xtriage
Refinement program	CNS 1.1	Depositor
R, $R_{free}$	0.234 , 0.281 0.232 , 0.275	Depositor DCC
$R_{free}$ test set	1596 reflections (4.73%)	DCC
Wilson B-factor (Å <sup>2</sup> )	58.7	Xtriage
Anisotropy	0.251	Xtriage
Bulk solvent $k_{sol}$ (e/Å <sup>3</sup> ), $B_{sol}$ (Å <sup>2</sup> )	0.27 , 76.1	EDS
L-test for twinning <sup>2</sup>	$\langle  L  \rangle = 0.49$ , $\langle L^2 \rangle = 0.32$	Xtriage
Estimated twinning fraction	No twinning to report.	Xtriage
$F_o, F_c$ correlation	0.93	EDS
Total number of atoms	8773	wwPDB-VP
Average B, all atoms (Å <sup>2</sup> )	75.0	wwPDB-VP

Xtriage's analysis on translational NCS is as follows: *The largest off-origin peak in the Patterson function is 6.14% of the height of the origin peak. No significant pseudotranslation is detected.*

<sup>1</sup>Intensities estimated from amplitudes.

<sup>2</sup>Theoretical values of  $\langle |L| \rangle$ ,  $\langle L^2 \rangle$  for acentric reflections are 0.5, 0.333 respectively for untwinned datasets, and 0.375, 0.2 for perfectly twinned datasets.

## 5 Model quality [i](#)

### 5.1 Standard geometry [i](#)

Bond lengths and bond angles in the following residue types are not validated in this section: IBP

The Z score for a bond length (or angle) is the number of standard deviations the observed value is removed from the expected value. A bond length (or angle) with  $|Z| > 5$  is considered an outlier worth inspection. RMSZ is the root-mean-square of all Z scores of the bond lengths (or angles).

Mol	Chain	Bond lengths		Bond angles	
		RMSZ	$\# Z  > 5$	RMSZ	$\# Z  > 5$
1	A	0.40	1/4443 (0.0%)	0.61	2/6031 (0.0%)
1	B	0.37	0/4438	0.59	1/6028 (0.0%)
All	All	0.38	1/8881 (0.0%)	0.60	3/12059 (0.0%)

All (1) bond length outliers are listed below:

Mol	Chain	Res	Type	Atoms	Z	Observed(Å)	Ideal(Å)
1	A	564	LYS	C-O	5.31	1.33	1.23

All (3) bond angle outliers are listed below:

Mol	Chain	Res	Type	Atoms	Z	Observed(°)	Ideal(°)
1	A	563	ASP	CB-CG-OD1	-7.56	111.50	118.30
1	A	564	LYS	N-CA-C	-5.63	95.79	111.00
1	B	472	ARG	NE-CZ-NH1	-5.12	117.74	120.30

There are no chirality outliers.

There are no planarity outliers.

### 5.2 Too-close contacts [i](#)

In the following table, the Non-H and H(model) columns list the number of non-hydrogen atoms and hydrogen atoms in the chain respectively. The H(added) column lists the number of hydrogen atoms added and optimized by MolProbity. The Clashes column lists the number of clashes within the asymmetric unit, whereas Symm-Clashes lists symmetry related clashes.

Mol	Chain	Non-H	H(model)	H(added)	Clashes	Symm-Clashes
1	A	4360	0	4059	148	0
1	B	4353	0	3993	164	0

*Continued on next page...*



*Continued from previous page...*

Mol	Chain	Non-H	H(model)	H(added)	Clashes	Symm-Clashes
2	A	30	0	34	4	0
2	B	30	0	34	2	0
All	All	8773	0	8120	312	0

The all-atom clashscore is defined as the number of clashes found per 1000 atoms (including hydrogen atoms). The all-atom clashscore for this structure is 18.

The worst 5 of 312 close contacts within the same asymmetric unit are listed below, sorted by their clash magnitude.

Atom-1	Atom-2	Interatomic distance (Å)	Clash overlap (Å)
1:A:564:LYS:O	1:A:566:THR:N	1.90	1.05
1:A:424:VAL:O	1:A:428:ARG:HG3	1.72	0.89
1:B:433:VAL:HG22	1:B:452:TYR:CD2	2.07	0.88
1:B:424:VAL:O	1:B:428:ARG:HG3	1.74	0.88
1:B:151:ALA:HB3	1:B:152:PRO:HD3	1.56	0.85

There are no symmetry-related clashes.

## 5.3 Torsion angles [i](#)

### 5.3.1 Protein backbone [i](#)

In the following table, the Percentiles column shows the percent Ramachandran outliers of the chain as a percentile score with respect to all X-ray entries followed by that with respect to entries of similar resolution.

The Analysed column shows the number of residues for which the backbone conformation was analysed, and the total number of residues.

Mol	Chain	Analysed	Favoured	Allowed	Outliers	Percentiles	
1	A	576/585 (98%)	507 (88%)	54 (9%)	15 (3%)	6	15
1	B	576/585 (98%)	508 (88%)	51 (9%)	17 (3%)	5	12
All	All	1152/1170 (98%)	1015 (88%)	105 (9%)	32 (3%)	6	14

5 of 32 Ramachandran outliers are listed below:

Mol	Chain	Res	Type
1	A	59	ALA
1	A	95	GLU

*Continued on next page...*

*Continued from previous page...*

Mol	Chain	Res	Type
1	A	300	ALA
1	A	565	GLU
1	B	54	VAL

### 5.3.2 Protein sidechains ⓘ

In the following table, the Percentiles column shows the percent sidechain outliers of the chain as a percentile score with respect to all X-ray entries followed by that with respect to entries of similar resolution.

The Analysed column shows the number of residues for which the sidechain conformation was analysed, and the total number of residues.

Mol	Chain	Analysed	Rotameric	Outliers	Percentiles	
1	A	444/511 (87%)	428 (96%)	16 (4%)	40	70
1	B	437/511 (86%)	422 (97%)	15 (3%)	42	73
All	All	881/1022 (86%)	850 (96%)	31 (4%)	41	72

5 of 31 residues with a non-rotameric sidechain are listed below:

Mol	Chain	Res	Type
1	A	543	GLN
1	B	56	ASP
1	B	532	LEU
1	A	550	ASP
1	B	57	GLU

Some sidechains can be flipped to improve hydrogen bonding and reduce clashes. 5 of 18 such sidechains are listed below:

Mol	Chain	Res	Type
1	A	429	ASN
1	A	459	GLN
1	B	338	HIS
1	A	318	ASN
1	A	367	HIS

### 5.3.3 RNA ⓘ

There are no RNA molecules in this entry.

## 5.4 Non-standard residues in protein, DNA, RNA chains [i](#)

There are no non-standard protein/DNA/RNA residues in this entry.

## 5.5 Carbohydrates [i](#)

There are no carbohydrates in this entry.

## 5.6 Ligand geometry [i](#)

4 ligands are modelled in this entry.

In the following table, the Counts columns list the number of bonds (or angles) for which Mogul statistics could be retrieved, the number of bonds (or angles) that are observed in the model and the number of bonds (or angles) that are defined in the chemical component dictionary. The Link column lists molecule types, if any, to which the group is linked. The Z score for a bond length (or angle) is the number of standard deviations the observed value is removed from the expected value. A bond length (or angle) with  $|Z| > 2$  is considered an outlier worth inspection. RMSZ is the root-mean-square of all Z scores of the bond lengths (or angles).

Mol	Type	Chain	Res	Link	Bond lengths			Bond angles		
					Counts	RMSZ	# $ Z  > 2$	Counts	RMSZ	# $ Z  > 2$
2	IBP	A	2001	-	12,15,15	2.07	5 (41%)	16,20,20	1.03	2 (12%)
2	IBP	A	2002	-	12,15,15	2.97	8 (66%)	16,20,20	1.55	2 (12%)
2	IBP	B	2001	-	12,15,15	2.14	6 (50%)	16,20,20	0.97	2 (12%)
2	IBP	B	2002	-	12,15,15	2.72	8 (66%)	16,20,20	1.40	2 (12%)

In the following table, the Chirals column lists the number of chiral outliers, the number of chiral centers analysed, the number of these observed in the model and the number defined in the chemical component dictionary. Similar counts are reported in the Torsion and Rings columns. '-' means no outliers of that kind were identified.

Mol	Type	Chain	Res	Link	Chirals	Torsions	Rings
2	IBP	A	2001	-	-	0/8/12/12	0/1/1/1
2	IBP	A	2002	-	-	0/8/12/12	0/1/1/1
2	IBP	B	2001	-	-	0/8/12/12	0/1/1/1
2	IBP	B	2002	-	-	0/8/12/12	0/1/1/1

The worst 5 of 27 bond length outliers are listed below:

Mol	Chain	Res	Type	Atoms	Z	Observed(Å)	Ideal(Å)
2	A	2001	IBP	C7-C6	-3.36	1.47	1.53
2	B	2001	IBP	C7-C6	-2.53	1.48	1.53

*Continued on next page...*

*Continued from previous page...*

Mol	Chain	Res	Type	Atoms	Z	Observed(Å)	Ideal(Å)
2	B	2002	IBP	C7-C6	-2.41	1.49	1.53
2	A	2002	IBP	C2-C11	2.33	1.56	1.51
2	A	2001	IBP	C10-C9	2.36	1.43	1.38

The worst 5 of 8 bond angle outliers are listed below:

Mol	Chain	Res	Type	Atoms	Z	Observed(°)	Ideal(°)
2	A	2002	IBP	C1-C6-C8	-3.94	104.41	112.12
2	B	2002	IBP	C1-C6-C8	-3.58	105.11	112.12
2	A	2001	IBP	C1-C6-C8	-2.73	106.77	112.12
2	B	2001	IBP	C1-C6-C8	-2.26	107.69	112.12
2	A	2001	IBP	C7-C6-C8	2.38	119.80	112.01

There are no chirality outliers.

There are no torsion outliers.

There are no ring outliers.

3 monomers are involved in 6 short contacts:

Mol	Chain	Res	Type	Clashes	Symm-Clashes
2	A	2001	IBP	3	0
2	A	2002	IBP	1	0
2	B	2002	IBP	2	0

## 5.7 Other polymers [i](#)

There are no such residues in this entry.

## 5.8 Polymer linkage issues [i](#)

There are no chain breaks in this entry.

## 6 Fit of model and data [i](#)

### 6.1 Protein, DNA and RNA chains [i](#)

In the following table, the column labelled ‘#RSRZ> 2’ contains the number (and percentage) of RSRZ outliers, followed by percent RSRZ outliers for the chain as percentile scores relative to all X-ray entries and entries of similar resolution. The OWAB column contains the minimum, median, 95<sup>th</sup> percentile and maximum values of the occupancy-weighted average B-factor per residue. The column labelled ‘Q< 0.9’ lists the number of (and percentage) of residues with an average occupancy less than 0.9.

Mol	Chain	Analysed	<RSRZ>	#RSRZ>2	OWAB(Å <sup>2</sup> )	Q<0.9
1	A	578/585 (98%)	0.13	37 (6%) 20 18	29, 70, 136, 146	0
1	B	578/585 (98%)	0.16	41 (7%) 17 14	25, 72, 137, 151	0
All	All	1156/1170 (98%)	0.14	78 (6%) 19 16	25, 71, 137, 151	0

The worst 5 of 78 RSRZ outliers are listed below:

Mol	Chain	Res	Type	RSRZ
1	B	562	ASP	8.2
1	B	566	THR	7.7
1	B	555	VAL	6.9
1	A	572	GLY	6.3
1	A	569	ALA	5.7

### 6.2 Non-standard residues in protein, DNA, RNA chains [i](#)

There are no non-standard protein/DNA/RNA residues in this entry.

### 6.3 Carbohydrates [i](#)

There are no carbohydrates in this entry.

### 6.4 Ligands [i](#)

In the following table, the Atoms column lists the number of modelled atoms in the group and the number defined in the chemical component dictionary. LLDF column lists the quality of electron density of the group with respect to its neighbouring residues in protein, DNA or RNA chains. The B-factors column lists the minimum, median, 95<sup>th</sup> percentile and maximum values of B factors of atoms in the group. The column labelled ‘Q< 0.9’ lists the number of atoms with occupancy less than 0.9.

Mol	Type	Chain	Res	Atoms	RSCC	RSR	LLDF	B-factors( $\text{\AA}^2$ )	Q<0.9
2	IBP	A	2001	15/15	0.88	0.34	4.62	69,72,78,79	0
2	IBP	B	2001	15/15	0.92	0.30	2.87	66,69,73,73	0
2	IBP	A	2002	15/15	0.84	0.29	1.99	88,90,93,94	0
2	IBP	B	2002	15/15	0.89	0.25	1.74	99,102,103,104	0

## 6.5 Other polymers [i](#)

There are no such residues in this entry.