



# Full wwPDB X-ray Structure Validation Report ⓘ

Feb 13, 2017 – 09:27 am GMT

PDB ID : 2BZS  
Title : BINDING OF ANTI-CANCER PRODRUG CB1954 TO THE ACTIVATING ENZYME NQO2 REVEALED BY THE CRYSTAL STRUCTURE OF THEIR COMPLEX.  
Authors : Abu Khader, M.M.; Heap, J.T.; De Matteis, C.; Kellam, B.; Doughty, S.W.; Minton, N.; Paoli, M.  
Deposited on : 2005-08-22  
Resolution : 2.00 Å(reported)

This is a Full wwPDB X-ray Structure Validation Report for a publicly released PDB entry.

We welcome your comments at [validation@mail.wwpdb.org](mailto:validation@mail.wwpdb.org)

A user guide is available at

<http://wwpdb.org/validation/2016/XrayValidationReportHelp>

with specific help available everywhere you see the ⓘ symbol.

---

The following versions of software and data (see [references ⓘ](#)) were used in the production of this report:

MolProbity	:	4.02b-467
Mogul	:	1.7.2 (RC1), CSD as538be (2017)
Xtriage (Phenix)	:	1.9-1692
EDS	:	trunk28620
Percentile statistics	:	20161228.v01 (using entries in the PDB archive December 28th 2016)
Refmac	:	5.8.0135
CCP4	:	6.5.0
Ideal geometry (proteins)	:	Engh & Huber (2001)
Ideal geometry (DNA, RNA)	:	Parkinson et al. (1996)
Validation Pipeline (wwPDB-VP)	:	recalc28949

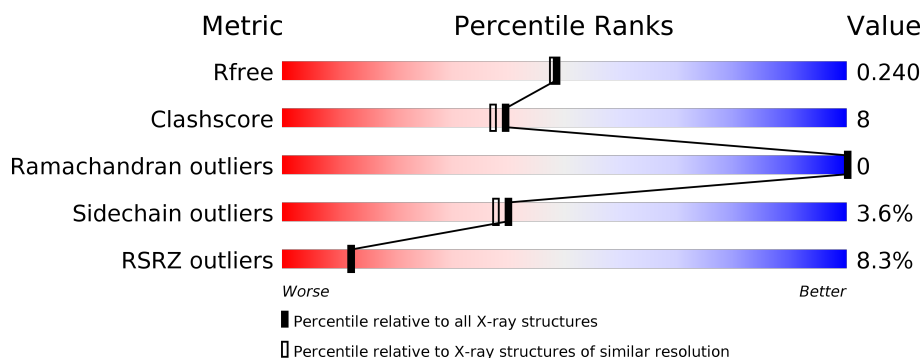
# 1 Overall quality at a glance

The following experimental techniques were used to determine the structure:

*X-RAY DIFFRACTION*

The reported resolution of this entry is 2.00 Å.

Percentile scores (ranging between 0-100) for global validation metrics of the entry are shown in the following graphic. The table shows the number of entries on which the scores are based.



Metric	Whole archive (#Entries)	Similar resolution (#Entries, resolution range(Å))
$R_{free}$	100719	6609 (2.00-2.00)
Clashscore	112137	7775 (2.00-2.00)
Ramachandran outliers	110173	7679 (2.00-2.00)
Sidechain outliers	110143	7678 (2.00-2.00)
RSRZ outliers	101464	6696 (2.00-2.00)

The table below summarises the geometric issues observed across the polymeric chains and their fit to the electron density. The red, orange, yellow and green segments on the lower bar indicate the fraction of residues that contain outliers for  $\geq 3$ , 2, 1 and 0 types of geometric quality criteria. A grey segment represents the fraction of residues that are not modelled. The numeric value for each fraction is indicated below the corresponding segment, with a dot representing fractions  $\leq 5\%$ . The upper red bar (where present) indicates the fraction of residues that have poor fit to the electron density. The numeric value is given above the bar.

Mol	Chain	Length	Quality of chain
1	A	236	<div> <div>6%</div> <div>83%</div> <div>13%</div> <div>••</div> </div>
1	B	236	<div> <div>10%</div> <div>79%</div> <div>18%</div> <div>•</div> </div>

The following table lists non-polymeric compounds, carbohydrate monomers and non-standard residues in protein, DNA, RNA chains that are outliers for geometric or electron-density-fit criteria:

Mol	Type	Chain	Res	Chirality	Geometry	Clashes	Electron density
4	CB1	A	235	-	-	X	X

## 2 Entry composition [i](#)

There are 5 unique types of molecules in this entry. The entry contains 4091 atoms, of which 0 are hydrogens and 0 are deuteriums.

In the tables below, the ZeroOcc column contains the number of atoms modelled with zero occupancy, the AltConf column contains the number of residues with at least one atom in alternate conformation and the Trace column contains the number of residues modelled with at most 2 atoms.

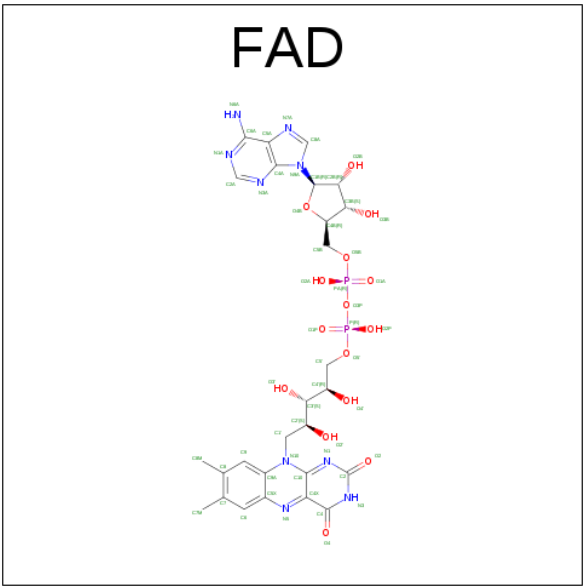
- Molecule 1 is a protein called NRH DEHYDROGENASE [QUINONE] 2.

Mol	Chain	Residues	Atoms					ZeroOcc	AltConf	Trace
1	A	230	Total	C	N	O	S	0	0	0
			1824	1174	304	338	8			
1	B	230	Total	C	N	O	S	11	0	0
			1824	1174	304	338	8			

- Molecule 2 is ZINC ION (three-letter code: ZN) (formula: Zn).

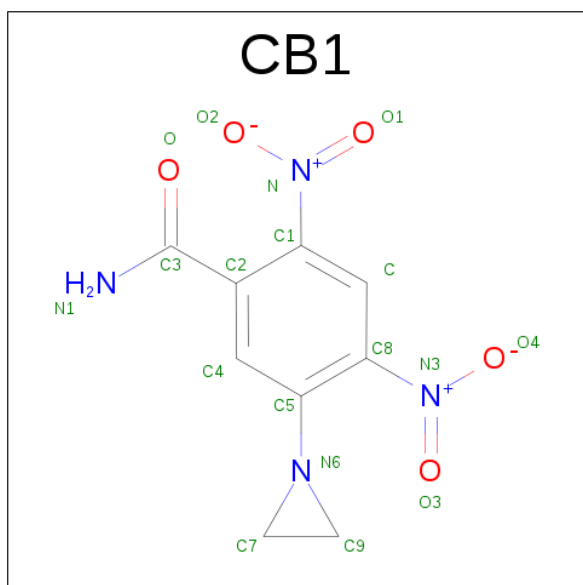
Mol	Chain	Residues	Atoms		ZeroOcc	AltConf
2	B	1	Total	Zn	0	0
			1	1		
2	A	1	Total	Zn	0	0
			1	1		

- Molecule 3 is FLAVIN-ADENINE DINUCLEOTIDE (three-letter code: FAD) (formula: C<sub>27</sub>H<sub>33</sub>N<sub>9</sub>O<sub>15</sub>P<sub>2</sub>).



Mol	Chain	Residues	Atoms					ZeroOcc	AltConf
3	A	1	Total	C	N	O	P	0	0
			53	27	9	15	2		
3	B	1	Total	C	N	O	P	0	0
			53	27	9	15	2		

- Molecule 4 is 5-(AZIRIDIN-1-YL)-2,4-DINITROBENZAMIDE (three-letter code: CB1) (formula: C<sub>9</sub>H<sub>8</sub>N<sub>4</sub>O<sub>5</sub>).



Mol	Chain	Residues	Atoms				ZeroOcc	AltConf
4	A	1	Total	C	N	O	0	0
			18	9	4	5		
4	B	1	Total	C	N	O	0	0
			18	9	4	5		

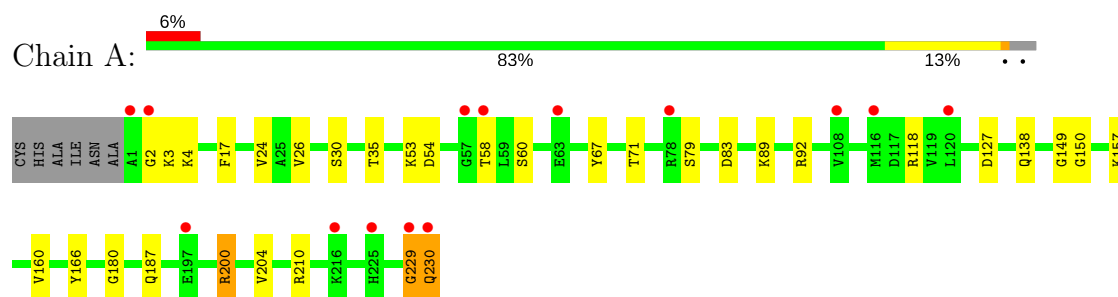
- Molecule 5 is water.

Mol	Chain	Residues	Atoms		ZeroOcc	AltConf
5	A	167	Total	O	0	0
			167	167		
5	B	132	Total	O	0	0
			132	132		

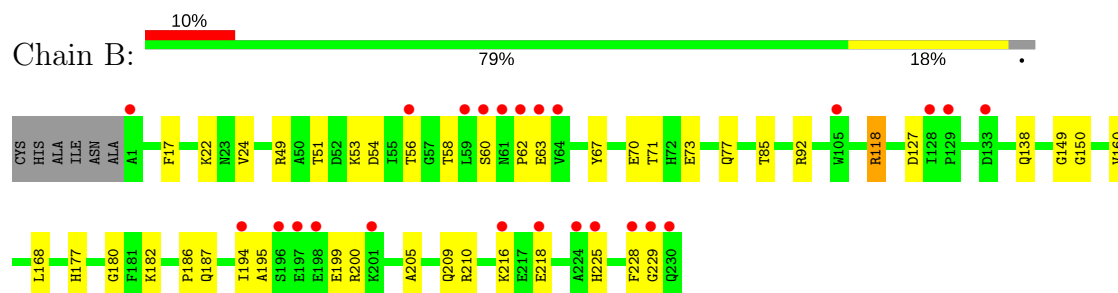
### 3 Residue-property plots [i](#)

These plots are drawn for all protein, RNA and DNA chains in the entry. The first graphic for a chain summarises the proportions of the various outlier classes displayed in the second graphic. The second graphic shows the sequence view annotated by issues in geometry and electron density. Residues are color-coded according to the number of geometric quality criteria for which they contain at least one outlier: green = 0, yellow = 1, orange = 2 and red = 3 or more. A red dot above a residue indicates a poor fit to the electron density ( $RSRZ > 2$ ). Stretches of 2 or more consecutive residues without any outlier are shown as a green connector. Residues present in the sample, but not in the model, are shown in grey.

#### • Molecule 1: NRH DEHYDROGENASE [QUINONE] 2



#### • Molecule 1: NRH DEHYDROGENASE [QUINONE] 2



## 4 Data and refinement statistics

Property	Value	Source
Space group	P 21 21 21	Depositor
Cell constants a, b, c, $\alpha$ , $\beta$ , $\gamma$	80.83Å 106.11Å 61.65Å 90.00° 90.00° 90.00°	Depositor
Resolution (Å)	30.00 – 2.00 29.60 – 2.00	Depositor EDS
% Data completeness (in resolution range)	99.4 (30.00-2.00) 99.4 (29.60-2.00)	Depositor EDS
$R_{merge}$	0.08	Depositor
$R_{sym}$	(Not available)	Depositor
$\langle I/\sigma(I) \rangle$ <sup>1</sup>	2.41 (at 2.00Å)	Xtriage
Refinement program	REFMAC 5.2.0005	Depositor
R, $R_{free}$	0.193 , 0.247 0.197 , 0.240	Depositor DCC
$R_{free}$ test set	1813 reflections (5.25%)	DCC
Wilson B-factor (Å <sup>2</sup> )	32.6	Xtriage
Anisotropy	0.121	Xtriage
Bulk solvent $k_{sol}$ (e/Å <sup>3</sup> ), $B_{sol}$ (Å <sup>2</sup> )	0.38 , 47.5	EDS
L-test for twinning <sup>2</sup>	$\langle  L  \rangle = 0.49$ , $\langle L^2 \rangle = 0.32$	Xtriage
Estimated twinning fraction	No twinning to report.	Xtriage
$F_o, F_c$ correlation	0.96	EDS
Total number of atoms	4091	wwPDB-VP
Average B, all atoms (Å <sup>2</sup> )	31.0	wwPDB-VP

Xtriage's analysis on translational NCS is as follows: *The largest off-origin peak in the Patterson function is 6.22% of the height of the origin peak. No significant pseudotranslation is detected.*

<sup>1</sup>Intensities estimated from amplitudes.

<sup>2</sup>Theoretical values of  $\langle |L| \rangle$ ,  $\langle L^2 \rangle$  for acentric reflections are 0.5, 0.333 respectively for untwinned datasets, and 0.375, 0.2 for perfectly twinned datasets.

## 5 Model quality

### 5.1 Standard geometry

Bond lengths and bond angles in the following residue types are not validated in this section: ZN, CB1, FAD

The Z score for a bond length (or angle) is the number of standard deviations the observed value is removed from the expected value. A bond length (or angle) with  $|Z| > 5$  is considered an outlier worth inspection. RMSZ is the root-mean-square of all Z scores of the bond lengths (or angles).

Mol	Chain	Bond lengths		Bond angles	
		RMSZ	$\# Z  > 5$	RMSZ	$\# Z  > 5$
1	A	0.83	0/1874	0.80	2/2542 (0.1%)
1	B	0.79	0/1874	0.80	2/2542 (0.1%)
All	All	0.81	0/3748	0.80	4/5084 (0.1%)

Chiral center outliers are detected by calculating the chiral volume of a chiral center and verifying if the center is modelled as a planar moiety or with the opposite hand. A planarity outlier is detected by checking planarity of atoms in a peptide group, atoms in a mainchain group or atoms of a sidechain that are expected to be planar.

Mol	Chain	#Chirality outliers	#Planarity outliers
1	A	0	1

There are no bond length outliers.

All (4) bond angle outliers are listed below:

Mol	Chain	Res	Type	Atoms	Z	Observed( $^{\circ}$ )	Ideal( $^{\circ}$ )
1	B	118	ARG	NE-CZ-NH2	-9.39	115.61	120.30
1	B	118	ARG	NE-CZ-NH1	8.22	124.41	120.30
1	A	200	ARG	NE-CZ-NH2	-5.58	117.51	120.30
1	A	127	ASP	CB-CG-OD2	-5.46	113.39	118.30

There are no chirality outliers.

All (1) planarity outliers are listed below:

Mol	Chain	Res	Type	Group
1	A	229	GLY	Peptide



## 5.2 Too-close contacts ⓘ

In the following table, the Non-H and H(model) columns list the number of non-hydrogen atoms and hydrogen atoms in the chain respectively. The H(added) column lists the number of hydrogen atoms added and optimized by MolProbity. The Clashes column lists the number of clashes within the asymmetric unit, whereas Symm-Clashes lists symmetry related clashes.

Mol	Chain	Non-H	H(model)	H(added)	Clashes	Symm-Clashes
1	A	1824	0	1779	20	0
1	B	1824	0	1779	39	3
2	A	1	0	0	0	0
2	B	1	0	0	0	0
3	A	53	0	31	3	0
3	B	53	0	31	2	0
4	A	18	0	8	10	0
4	B	18	0	8	5	0
5	A	167	0	0	4	0
5	B	132	0	0	9	0
All	All	4091	0	3636	62	3

The all-atom clashscore is defined as the number of clashes found per 1000 atoms (including hydrogen atoms). The all-atom clashscore for this structure is 8.

All (62) close contacts within the same asymmetric unit are listed below, sorted by their clash magnitude.

Atom-1	Atom-2	Interatomic distance (Å)	Clash overlap (Å)
1:B:216:LYS:HD2	5:B:2121:HOH:O	1.58	1.02
1:B:56:THR:O	1:B:56:THR:HG23	1.61	0.98
4:A:235:CB1:H91	5:A:2166:HOH:O	1.66	0.94
4:A:235:CB1:HN11	1:B:150:GLY:N	1.66	0.93
4:A:235:CB1:N1	1:B:150:GLY:N	2.26	0.83
4:A:235:CB1:HN12	1:B:150:GLY:HA2	1.46	0.80
4:A:235:CB1:HN11	1:B:149:GLY:C	1.83	0.80
4:A:235:CB1:N1	1:B:150:GLY:CA	2.46	0.79
1:B:92:ARG:HD3	5:B:2073:HOH:O	1.83	0.78
1:A:149:GLY:C	4:B:236:CB1:HN11	1.89	0.76
4:A:235:CB1:N1	1:B:150:GLY:HA2	2.03	0.74
3:A:233:FAD:O4B	1:B:200:ARG:HD3	1.88	0.74
1:B:56:THR:O	1:B:56:THR:CG2	2.34	0.73
4:A:235:CB1:N1	1:B:149:GLY:C	2.43	0.72
1:A:89:LYS:HG3	5:A:2090:HOH:O	1.92	0.69
1:A:229:GLY:HA3	1:A:230:GLN:HB2	1.75	0.67
1:B:51:THR:OG1	1:B:53:LYS:HE3	1.95	0.65

*Continued on next page...*

*Continued from previous page...*

Atom-1	Atom-2	Interatomic distance (Å)	Clash overlap (Å)
1:A:26:VAL:O	1:A:30:SER:HB2	1.97	0.64
1:A:229:GLY:CA	1:A:230:GLN:HB2	2.29	0.62
1:A:54:ASP:OD2	1:A:118:ARG:HD2	1.98	0.62
1:A:200:ARG:HD3	3:B:234:FAD:O4B	2.03	0.59
1:A:150:GLY:HA2	4:B:236:CB1:N1	2.19	0.58
1:B:218:GLU:HG3	5:B:2125:HOH:O	2.05	0.56
1:B:216:LYS:CE	5:B:2121:HOH:O	2.56	0.54
1:A:92:ARG:NH2	5:A:2090:HOH:O	2.40	0.54
1:B:168:LEU:HD13	1:B:186:PRO:HG3	1.89	0.54
1:A:149:GLY:C	4:B:236:CB1:N1	2.60	0.53
3:A:233:FAD:H51A	1:B:17:PHE:HB2	1.90	0.53
1:B:177:HIS:HD2	1:B:177:HIS:O	1.92	0.52
1:B:225:HIS:CD2	1:B:229:GLY:O	2.63	0.51
4:B:236:CB1:C7	4:B:236:CB1:O3	2.58	0.51
1:B:92:ARG:NH2	5:B:2074:HOH:O	2.42	0.51
1:B:187:GLN:HE21	1:B:210:ARG:HH11	1.58	0.51
1:B:49:ARG:O	1:B:118:ARG:HD3	2.10	0.51
1:A:187:GLN:HE21	1:A:210:ARG:HH11	1.59	0.50
1:B:218:GLU:CD	5:B:2125:HOH:O	2.49	0.50
1:B:54:ASP:OD2	1:B:118:ARG:HD2	2.12	0.49
1:A:17:PHE:HB2	3:B:234:FAD:H51A	1.94	0.48
1:A:2:GLY:O	1:A:3:LYS:HG2	2.13	0.48
1:B:218:GLU:CG	5:B:2125:HOH:O	2.61	0.48
1:A:157:LYS:HZ2	1:A:230:GLN:H	1.61	0.47
1:B:85:THR:HG21	5:B:2063:HOH:O	2.14	0.47
1:B:60:SER:O	1:B:62:PRO:HD3	2.15	0.46
1:A:83:ASP:OD2	1:A:118:ARG:NH2	2.31	0.46
1:A:4:LYS:HG2	1:A:35:THR:HB	2.00	0.44
1:A:67:TYR:CZ	1:A:71:THR:HG21	2.52	0.44
4:A:235:CB1:H1	5:A:2167:HOH:O	2.18	0.44
3:A:233:FAD:O4B	1:B:200:ARG:CD	2.64	0.44
1:B:177:HIS:CD2	1:B:177:HIS:O	2.71	0.43
1:B:195:ALA:HB1	1:B:199:GLU:HB2	2.00	0.43
1:B:205:ALA:O	1:B:209:GLN:HG3	2.19	0.43
1:A:150:GLY:CA	4:B:236:CB1:N1	2.82	0.43
1:B:216:LYS:CD	5:B:2121:HOH:O	2.33	0.43
1:B:70:GLU:OE1	1:B:70:GLU:HA	2.19	0.42
4:A:235:CB1:C3	4:A:235:CB1:O2	2.67	0.42
1:B:138:GLN:HA	1:B:180:GLY:O	2.20	0.42
1:A:138:GLN:HA	1:A:180:GLY:O	2.20	0.42
1:A:166:TYR:CD2	1:B:228:PHE:CE2	3.08	0.42

*Continued on next page...*

*Continued from previous page...*

Atom-1	Atom-2	Interatomic distance (Å)	Clash overlap (Å)
1:B:22:LYS:HE3	1:B:22:LYS:HB3	1.92	0.42
1:B:67:TYR:CZ	1:B:71:THR:HG21	2.55	0.41
1:B:73:GLU:O	1:B:77:GLN:HG2	2.21	0.41
1:B:225:HIS:HD2	1:B:229:GLY:O	2.03	0.40

All (3) symmetry-related close contacts are listed below. The label for Atom-2 includes the symmetry operator and encoded unit-cell translations to be applied.

Atom-1	Atom-2	Interatomic distance (Å)	Clash overlap (Å)
1:B:58:THR:CG2	1:B:218:GLU:CG[4_556]	1.67	0.53
1:B:58:THR:OG1	1:B:218:GLU:CB[4_556]	1.81	0.39
1:B:58:THR:OG1	1:B:218:GLU:CG[4_556]	2.14	0.06

## 5.3 Torsion angles [i](#)

### 5.3.1 Protein backbone [i](#)

In the following table, the Percentiles column shows the percent Ramachandran outliers of the chain as a percentile score with respect to all X-ray entries followed by that with respect to entries of similar resolution.

The Analysed column shows the number of residues for which the backbone conformation was analysed, and the total number of residues.

Mol	Chain	Analysed	Favoured	Allowed	Outliers	Percentiles	
1	A	228/236 (97%)	223 (98%)	5 (2%)	0	100	100
1	B	228/236 (97%)	219 (96%)	9 (4%)	0	100	100
All	All	456/472 (97%)	442 (97%)	14 (3%)	0	100	100

There are no Ramachandran outliers to report.

### 5.3.2 Protein sidechains [i](#)

In the following table, the Percentiles column shows the percent sidechain outliers of the chain as a percentile score with respect to all X-ray entries followed by that with respect to entries of similar resolution.

The Analysed column shows the number of residues for which the sidechain conformation was analysed, and the total number of residues.

Mol	Chain	Analysed	Rotameric	Outliers	Percentiles	
1	A	194/198 (98%)	186 (96%)	8 (4%)	35	31
1	B	194/198 (98%)	188 (97%)	6 (3%)	45	44
All	All	388/396 (98%)	374 (96%)	14 (4%)	40	38

All (14) residues with a non-rotameric sidechain are listed below:

Mol	Chain	Res	Type
1	A	24	VAL
1	A	53	LYS
1	A	58	THR
1	A	60	SER
1	A	79	SER
1	A	160	VAL
1	A	204	VAL
1	A	230	GLN
1	B	24	VAL
1	B	63	GLU
1	B	127	ASP
1	B	160	VAL
1	B	182	LYS
1	B	194	ILE

Some sidechains can be flipped to improve hydrogen bonding and reduce clashes. All (7) such sidechains are listed below:

Mol	Chain	Res	Type
1	A	172	GLN
1	A	187	GLN
1	A	212	GLN
1	B	172	GLN
1	B	177	HIS
1	B	187	GLN
1	B	225	HIS

### 5.3.3 RNA ⓘ

There are no RNA molecules in this entry.

## 5.4 Non-standard residues in protein, DNA, RNA chains ⓘ

There are no non-standard protein/DNA/RNA residues in this entry.

## 5.5 Carbohydrates [i](#)

There are no carbohydrates in this entry.

## 5.6 Ligand geometry [i](#)

Of 6 ligands modelled in this entry, 2 are monoatomic - leaving 4 for Mogul analysis.

In the following table, the Counts columns list the number of bonds (or angles) for which Mogul statistics could be retrieved, the number of bonds (or angles) that are observed in the model and the number of bonds (or angles) that are defined in the chemical component dictionary. The Link column lists molecule types, if any, to which the group is linked. The Z score for a bond length (or angle) is the number of standard deviations the observed value is removed from the expected value. A bond length (or angle) with  $|Z| > 2$  is considered an outlier worth inspection. RMSZ is the root-mean-square of all Z scores of the bond lengths (or angles).

Mol	Type	Chain	Res	Link	Bond lengths			Bond angles		
					Counts	RMSZ	# Z  > 2	Counts	RMSZ	# Z  > 2
3	FAD	A	233	-	51,58,58	1.23	3 (5%)	54,89,89	2.41	10 (18%)
4	CB1	A	235	-	15,19,19	2.28	3 (20%)	18,28,28	3.25	6 (33%)
3	FAD	B	234	-	51,58,58	1.43	6 (11%)	54,89,89	2.16	8 (14%)
4	CB1	B	236	-	15,19,19	1.96	3 (20%)	18,28,28	2.88	8 (44%)

In the following table, the Chirals column lists the number of chiral outliers, the number of chiral centers analysed, the number of these observed in the model and the number defined in the chemical component dictionary. Similar counts are reported in the Torsion and Rings columns. '-' means no outliers of that kind were identified.

Mol	Type	Chain	Res	Link	Chirals	Torsions	Rings
3	FAD	A	233	-	-	0/28/50/50	0/6/6/6
4	CB1	A	235	-	-	0/12/18/18	0/1/2/2
3	FAD	B	234	-	-	0/28/50/50	0/6/6/6
4	CB1	B	236	-	-	0/12/18/18	0/1/2/2

All (15) bond length outliers are listed below:

Mol	Chain	Res	Type	Atoms	Z	Observed(Å)	Ideal(Å)
4	B	236	CB1	C9-N6	-2.35	1.43	1.46
3	B	234	FAD	C9A-C5X	-2.13	1.38	1.42
3	B	234	FAD	C1'-N10	2.10	1.50	1.48
4	A	235	CB1	C7-N6	2.44	1.49	1.46
3	B	234	FAD	C2A-N1A	2.62	1.38	1.33
3	A	233	FAD	C10-N1	3.37	1.38	1.33

*Continued on next page...*

*Continued from previous page...*

Mol	Chain	Res	Type	Atoms	Z	Observed(Å)	Ideal(Å)
3	A	233	FAD	C2A-N3A	3.71	1.38	1.32
4	B	236	CB1	C9-C7	3.77	1.57	1.47
3	B	234	FAD	C5X-N5	3.81	1.41	1.35
3	A	233	FAD	C4X-N5	4.03	1.39	1.33
3	B	234	FAD	C2A-N3A	4.32	1.39	1.32
3	B	234	FAD	C10-N1	4.44	1.39	1.33
4	A	235	CB1	C9-C7	5.44	1.62	1.47
4	A	235	CB1	C8-C5	5.49	1.48	1.40
4	B	236	CB1	C8-C5	5.52	1.48	1.40

All (32) bond angle outliers are listed below:

Mol	Chain	Res	Type	Atoms	Z	Observed(°)	Ideal(°)
3	A	233	FAD	N3A-C2A-N1A	-11.71	118.66	128.86
3	B	234	FAD	N3A-C2A-N1A	-10.18	119.99	128.86
4	A	235	CB1	C9-C7-N6	-6.60	55.07	59.58
4	A	235	CB1	C4-C5-N6	-5.57	114.99	122.70
4	B	236	CB1	C9-C7-N6	-4.29	56.65	59.58
3	A	233	FAD	C4X-C4-N3	-4.06	117.70	123.48
3	B	234	FAD	O5B-PA-O1A	-3.93	93.40	109.25
4	B	236	CB1	C7-C9-N6	-3.78	57.00	59.58
3	B	234	FAD	C4X-C4-N3	-3.67	118.26	123.48
4	B	236	CB1	C4-C5-N6	-3.49	117.87	122.70
3	B	234	FAD	C4A-C5A-N7A	-3.27	106.25	109.41
4	A	235	CB1	C4-C2-C3	-3.15	113.54	121.45
4	B	236	CB1	O-C3-N1	-2.77	118.65	122.58
3	A	233	FAD	C4A-C5A-N7A	-2.75	106.75	109.41
4	B	236	CB1	O-C3-C2	-2.69	117.07	120.28
3	A	233	FAD	O5B-PA-O1A	-2.61	98.70	109.25
3	A	233	FAD	O5B-C5B-C4B	-2.53	100.03	109.00
3	B	234	FAD	C1B-N9A-C4A	-2.39	122.50	126.64
3	A	233	FAD	O4'-C4'-C5'	-2.05	105.42	110.00
4	B	236	CB1	C4-C2-C3	-2.05	116.30	121.45
4	A	235	CB1	C7-C9-N6	-2.02	58.20	59.58
3	B	234	FAD	C1'-N10-C9A	2.34	120.49	118.35
3	A	233	FAD	C1'-N10-C10	2.37	120.94	118.50
3	A	233	FAD	C4X-N5-C5X	2.80	119.72	116.76
4	A	235	CB1	C-C8-N3	3.46	119.83	115.82
3	A	233	FAD	C5X-C9A-N10	3.62	120.35	117.66
3	B	234	FAD	C4X-N5-C5X	3.79	120.76	116.76
4	B	236	CB1	C2-C3-N1	3.91	124.14	118.16
3	B	234	FAD	C4-N3-C2	7.11	121.38	115.16

*Continued on next page...*

*Continued from previous page...*

Mol	Chain	Res	Type	Atoms	Z	Observed(°)	Ideal(°)
4	B	236	CB1	C9-N6-C7	7.92	66.35	60.83
4	A	235	CB1	C9-N6-C7	8.46	66.73	60.83
3	A	233	FAD	C4-N3-C2	8.69	122.76	115.16

There are no chirality outliers.

There are no torsion outliers.

There are no ring outliers.

4 monomers are involved in 20 short contacts:

Mol	Chain	Res	Type	Clashes	Symm-Clashes
3	A	233	FAD	3	0
4	A	235	CB1	10	0
3	B	234	FAD	2	0
4	B	236	CB1	5	0

## 5.7 Other polymers [i](#)

There are no such residues in this entry.

## 5.8 Polymer linkage issues [i](#)

There are no chain breaks in this entry.

## 6 Fit of model and data

### 6.1 Protein, DNA and RNA chains

In the following table, the column labelled ‘#RSRZ > 2’ contains the number (and percentage) of RSRZ outliers, followed by percent RSRZ outliers for the chain as percentile scores relative to all X-ray entries and entries of similar resolution. The OWAB column contains the minimum, median, 95<sup>th</sup> percentile and maximum values of the occupancy-weighted average B-factor per residue. The column labelled ‘Q < 0.9’ lists the number of (and percentage) of residues with an average occupancy less than 0.9.

Mol	Chain	Analysed	<RSRZ>	#RSRZ>2	OWAB(Å <sup>2</sup> )	Q<0.9
1	A	230/236 (97%)	0.26	14 (6%) 22 22	17, 27, 45, 61	0
1	B	228/236 (96%)	0.60	24 (10%) 7 7	18, 31, 52, 69	0
All	All	458/472 (97%)	0.43	38 (8%) 12 12	17, 28, 49, 69	0

All (38) RSRZ outliers are listed below:

Mol	Chain	Res	Type	RSRZ
1	B	1	ALA	8.2
1	A	2	GLY	7.4
1	B	230	GLN	6.6
1	B	224	ALA	6.5
1	B	229	GLY	5.1
1	A	1	ALA	4.8
1	B	63	GLU	4.7
1	B	59	LEU	4.5
1	B	128	ILE	4.4
1	B	56	THR	4.3
1	B	62	PRO	4.2
1	A	230	GLN	4.0
1	B	197	GLU	4.0
1	B	129	PRO	3.5
1	A	229	GLY	3.5
1	A	225	HIS	3.4
1	A	63	GLU	3.4
1	A	57	GLY	3.3
1	B	201	LYS	3.0
1	B	61	ASN	3.0
1	B	60	SER	3.0
1	B	64	VAL	2.7
1	B	198	GLU	2.6
1	A	58	THR	2.6

*Continued on next page...*



*Continued from previous page...*

Mol	Chain	Res	Type	RSRZ
1	B	228	PHE	2.6
1	B	218	GLU	2.6
1	B	225	HIS	2.5
1	B	216	LYS	2.5
1	A	78	ARG	2.3
1	A	216	LYS	2.3
1	B	105	TRP	2.2
1	A	197	GLU	2.2
1	B	133	ASP	2.1
1	B	194	ILE	2.1
1	A	108	VAL	2.1
1	B	196	SER	2.1
1	A	120	LEU	2.1
1	A	116	MET	2.0

## 6.2 Non-standard residues in protein, DNA, RNA chains [i](#)

There are no non-standard protein/DNA/RNA residues in this entry.

## 6.3 Carbohydrates [i](#)

There are no carbohydrates in this entry.

## 6.4 Ligands [i](#)

In the following table, the Atoms column lists the number of modelled atoms in the group and the number defined in the chemical component dictionary. LLDF column lists the quality of electron density of the group with respect to its neighbouring residues in protein, DNA or RNA chains. The B-factors column lists the minimum, median, 95<sup>th</sup> percentile and maximum values of B factors of atoms in the group. The column labelled 'Q < 0.9' lists the number of atoms with occupancy less than 0.9.

Mol	Type	Chain	Res	Atoms	RSCC	RSR	LLDF	B-factors(Å <sup>2</sup> )	Q<0.9
4	CB1	A	235	18/18	0.82	0.22	2.67	51,52,56,58	0
4	CB1	B	236	18/18	0.79	0.24	1.58	50,52,56,57	0
3	FAD	A	233	53/53	0.84	0.19	0.43	17,22,48,49	0
3	FAD	B	234	53/53	0.88	0.17	0.41	19,26,48,53	0
2	ZN	B	232	1/1	0.99	0.03	-19.44	54,54,54,54	0
2	ZN	A	231	1/1	1.00	0.06	-	30,30,30,30	0

## 6.5 Other polymers [i](#)

There are no such residues in this entry.