



# wwPDB X-ray Structure Validation Summary Report ⓘ

Feb 14, 2017 – 04:37 am GMT

PDB ID : 3C15  
Title : Complex of GS-Alpha with the Catalytic Domains of Mammalian Adenylyl Cyclase: Complex with Pyrophosphate and Mg  
Authors : Mou, T.-C.; Sprang, S.R.  
Deposited on : 2008-01-22  
Resolution : 2.78 Å(reported)

This is a wwPDB X-ray Structure Validation Summary Report for a publicly released PDB entry.

We welcome your comments at [validation@mail.wwpdb.org](mailto:validation@mail.wwpdb.org)

A user guide is available at

<http://wwpdb.org/validation/2016/XrayValidationReportHelp>

with specific help available everywhere you see the ⓘ symbol.

---

The following versions of software and data (see [references ⓘ](#)) were used in the production of this report:

MolProbity : 4.02b-467  
Mogul : 1.7.2 (RC1), CSD as538be (2017)  
Xtriage (Phenix) : 1.9-1692  
EDS : trunk28620  
Percentile statistics : 20161228.v01 (using entries in the PDB archive December 28th 2016)  
Refmac : 5.8.0135  
CCP4 : 6.5.0  
Ideal geometry (proteins) : Engh & Huber (2001)  
Ideal geometry (DNA, RNA) : Parkinson et al. (1996)  
Validation Pipeline (wwPDB-VP) : recalc28949

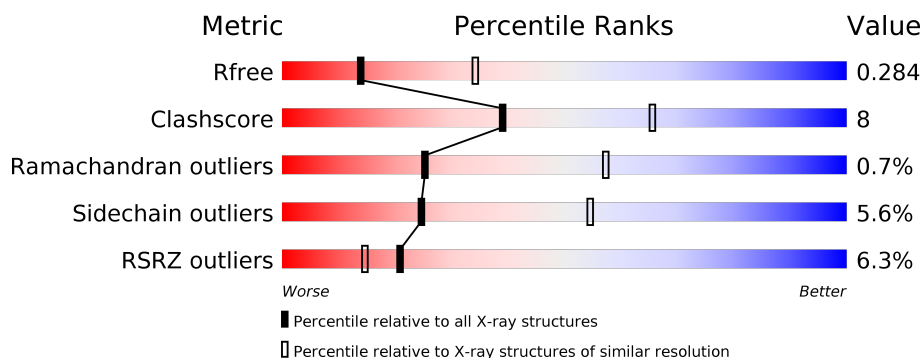
# 1 Overall quality at a glance

The following experimental techniques were used to determine the structure:

## *X-RAY DIFFRACTION*

The reported resolution of this entry is 2.78 Å.

Percentile scores (ranging between 0-100) for global validation metrics of the entry are shown in the following graphic. The table shows the number of entries on which the scores are based.



Metric	Whole archive (#Entries)	Similar resolution (#Entries, resolution range(Å))
$R_{free}$	100719	3276 (2.80-2.76)
Clashscore	112137	3771 (2.80-2.76)
Ramachandran outliers	110173	3707 (2.80-2.76)
Sidechain outliers	110143	3709 (2.80-2.76)
RSRZ outliers	101464	3307 (2.80-2.76)

The table below summarises the geometric issues observed across the polymeric chains and their fit to the electron density. The red, orange, yellow and green segments on the lower bar indicate the fraction of residues that contain outliers for  $\geq 3$ , 2, 1 and 0 types of geometric quality criteria. A grey segment represents the fraction of residues that are not modelled. The numeric value for each fraction is indicated below the corresponding segment, with a dot representing fractions  $\leq 5\%$ . The upper red bar (where present) indicates the fraction of residues that have poor fit to the electron density. The numeric value is given above the bar.

Mol	Chain	Length	Quality of chain
1	A	225	<div> <div>7%</div> <div>67%</div> <div>17%</div> <div>16%</div> </div>
2	B	212	<div> <div>5%</div> <div>71%</div> <div>17%</div> <div>11%</div> </div>
3	C	402	<div> <div>5%</div> <div>60%</div> <div>21%</div> <div>17%</div> </div>

## 2 Entry composition

There are 9 unique types of molecules in this entry. The entry contains 5775 atoms, of which 0 are hydrogens and 0 are deuteriums.

In the tables below, the ZeroOcc column contains the number of atoms modelled with zero occupancy, the AltConf column contains the number of residues with at least one atom in alternate conformation and the Trace column contains the number of residues modelled with at most 2 atoms.

- Molecule 1 is a protein called Adenylate cyclase type 5.

Mol	Chain	Residues	Atoms					ZeroOcc	AltConf	Trace
1	A	190	Total	C	N	O	S	0	0	0
			1484	933	260	274	17			

There are 8 discrepancies between the modelled and reference sequences:

Chain	Residue	Modelled	Actual	Comment	Reference
A	356	MET	-	EXPRESSION TAG	UNP P30803
A	357	HIS	-	EXPRESSION TAG	UNP P30803
A	358	HIS	-	EXPRESSION TAG	UNP P30803
A	359	HIS	-	EXPRESSION TAG	UNP P30803
A	360	HIS	-	EXPRESSION TAG	UNP P30803
A	361	HIS	-	EXPRESSION TAG	UNP P30803
A	362	HIS	-	EXPRESSION TAG	UNP P30803
A	476	MET	VAL	ENGINEERED	UNP P30803

- Molecule 2 is a protein called Adenylate cyclase type 2.

Mol	Chain	Residues	Atoms					ZeroOcc	AltConf	Trace
2	B	189	Total	C	N	O	S	0	0	0
			1467	936	242	279	10			

- Molecule 3 is a protein called Guanine nucleotide-binding protein G(s) subunit alpha isoforms short.

Mol	Chain	Residues	Atoms					ZeroOcc	AltConf	Trace
3	C	334	Total	C	N	O	S	0	0	0
			2740	1738	478	511	13			

There are 8 discrepancies between the modelled and reference sequences:

Chain	Residue	Modelled	Actual	Comment	Reference
C	395	GLY	-	EXPRESSION TAG	UNP P04896

*Continued on next page...*

Continued from previous page...

Chain	Residue	Modelled	Actual	Comment	Reference
C	396	GLY	-	EXPRESSION TAG	UNP P04896
C	397	HIS	-	EXPRESSION TAG	UNP P04896
C	398	HIS	-	EXPRESSION TAG	UNP P04896
C	399	HIS	-	EXPRESSION TAG	UNP P04896
C	400	HIS	-	EXPRESSION TAG	UNP P04896
C	401	HIS	-	EXPRESSION TAG	UNP P04896
C	402	HIS	-	EXPRESSION TAG	UNP P04896

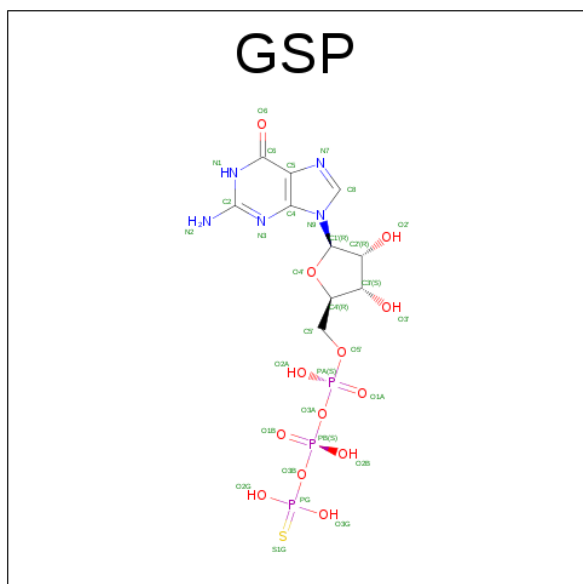
- Molecule 4 is CHLORIDE ION (three-letter code: CL) (formula: Cl).

Mol	Chain	Residues	Atoms	ZeroOcc	AltConf
4	C	1	Total Cl 1 1	0	0

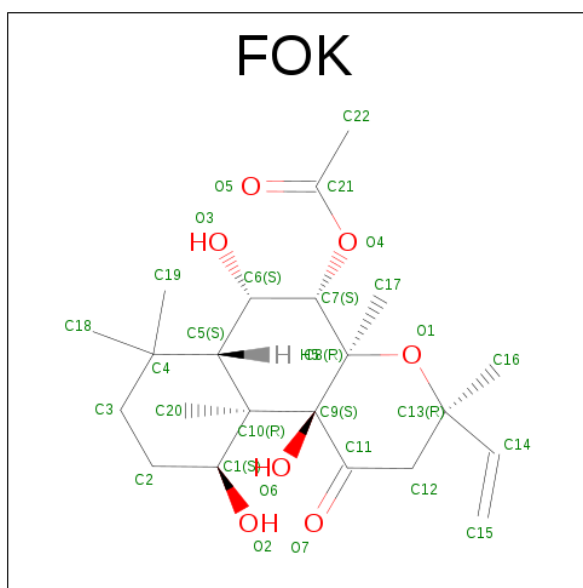
- Molecule 5 is MAGNESIUM ION (three-letter code: MG) (formula: Mg).

Mol	Chain	Residues	Atoms	ZeroOcc	AltConf
5	A	1	Total Mg 1 1	0	0

- Molecule 6 is 5'-GUANOSINE-DIPHOSPHATE-MONOTHIOPHOSPHATE (three-letter code: GSP) (formula: C<sub>10</sub>H<sub>16</sub>N<sub>5</sub>O<sub>13</sub>P<sub>3</sub>S).

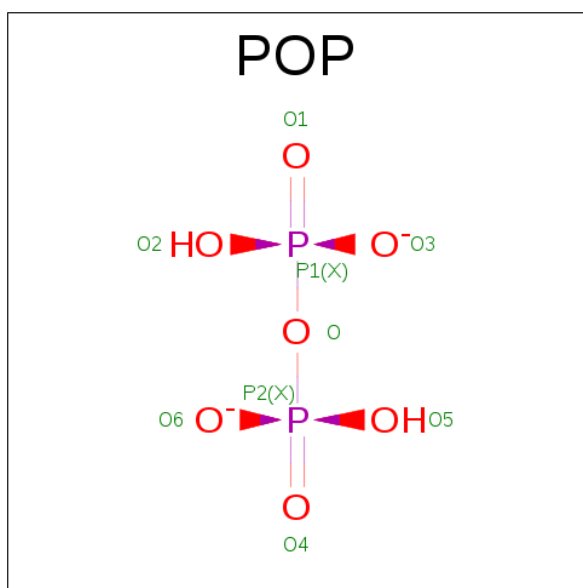


- Molecule 7 is FORSKOLIN (three-letter code: FOK) (formula:  $C_{22}H_{34}O_7$ ).



Mol	Chain	Residues	Atoms			ZeroOcc	AltConf
7	A	1	Total	C	O	0	0
			29	22	7		

- Molecule 8 is PYROPHOSPHATE 2- (three-letter code: POP) (formula:  $H_2O_7P_2$ ).



Mol	Chain	Residues	Atoms			ZeroOcc	AltConf
8	A	1	Total	O	P	0	0
			9	7	2		

- Molecule 9 is water.

Mol	Chain	Residues	Atoms		ZeroOcc	AltConf
9	A	3	Total 3	O 3	0	0
9	B	6	Total 6	O 6	0	0
9	C	3	Total 3	O 3	0	0



HIS  
STH



## 4 Data and refinement statistics

Property	Value	Source
Space group	P 2 <sub>1</sub> 2 <sub>1</sub> 2	Depositor
Cell constants a, b, c, $\alpha$ , $\beta$ , $\gamma$	117.51Å 133.08Å 70.11Å 90.00° 90.00° 90.00°	Depositor
Resolution (Å)	24.49 – 2.78 24.34 – 2.78	Depositor EDS
% Data completeness (in resolution range)	88.2 (24.49-2.78) 88.2 (24.34-2.78)	Depositor EDS
$R_{merge}$	(Not available)	Depositor
$R_{sym}$	13.90	Depositor
$\langle I/\sigma(I) \rangle$ <sup>1</sup>	2.04 (at 2.80Å)	Xtriage
Refinement program	REFMAC 5.2.0019	Depositor
R, $R_{free}$	0.237 , 0.291 0.231 , 0.284	Depositor DCC
$R_{free}$ test set	1250 reflections (5.28%)	DCC
Wilson B-factor (Å <sup>2</sup> )	50.3	Xtriage
Anisotropy	0.169	Xtriage
Bulk solvent $k_{sol}$ (e/Å <sup>3</sup> ), $B_{sol}$ (Å <sup>2</sup> )	0.32 , 44.6	EDS
L-test for twinning <sup>2</sup>	$\langle  L  \rangle = 0.45$ , $\langle L^2 \rangle = 0.28$	Xtriage
Estimated twinning fraction	No twinning to report.	Xtriage
$F_o, F_c$ correlation	0.91	EDS
Total number of atoms	5775	wwPDB-VP
Average B, all atoms (Å <sup>2</sup> )	54.0	wwPDB-VP

Xtriage's analysis on translational NCS is as follows: *The largest off-origin peak in the Patterson function is 3.27% of the height of the origin peak. No significant pseudotranslation is detected.*

<sup>1</sup>Intensities estimated from amplitudes.

<sup>2</sup>Theoretical values of  $\langle |L| \rangle$ ,  $\langle L^2 \rangle$  for acentric reflections are 0.5, 0.333 respectively for untwinned datasets, and 0.375, 0.2 for perfectly twinned datasets.

## 5 Model quality [i](#)

### 5.1 Standard geometry [i](#)

Bond lengths and bond angles in the following residue types are not validated in this section: GSP, MG, FOK, POP, CL

The Z score for a bond length (or angle) is the number of standard deviations the observed value is removed from the expected value. A bond length (or angle) with  $|Z| > 5$  is considered an outlier worth inspection. RMSZ is the root-mean-square of all Z scores of the bond lengths (or angles).

Mol	Chain	Bond lengths		Bond angles	
		RMSZ	$\# Z  > 5$	RMSZ	$\# Z  > 5$
1	A	0.38	0/1512	0.56	0/2038
2	B	0.42	0/1492	0.56	0/2014
3	C	0.43	0/2798	0.57	0/3786
All	All	0.41	0/5802	0.56	0/7838

There are no bond length outliers.

There are no bond angle outliers.

There are no chirality outliers.

There are no planarity outliers.

### 5.2 Too-close contacts [i](#)

In the following table, the Non-H and H(model) columns list the number of non-hydrogen atoms and hydrogen atoms in the chain respectively. The H(added) column lists the number of hydrogen atoms added and optimized by MolProbity. The Clashes column lists the number of clashes within the asymmetric unit, whereas Symm-Clashes lists symmetry related clashes.

Mol	Chain	Non-H	H(model)	H(added)	Clashes	Symm-Clashes
1	A	1484	0	1454	20	0
2	B	1467	0	1470	24	0
3	C	2740	0	2689	50	0
4	C	1	0	0	0	0
5	A	1	0	0	0	0
6	C	32	0	12	3	0
7	A	29	0	34	4	0
8	A	9	0	0	1	0
9	A	3	0	0	0	0
9	B	6	0	0	1	0

*Continued on next page...*

*Continued from previous page...*

Mol	Chain	Non-H	H(model)	H(added)	Clashes	Symm-Clashes
9	C	3	0	0	0	0
All	All	5775	0	5659	97	0

The all-atom clashscore is defined as the number of clashes found per 1000 atoms (including hydrogen atoms). The all-atom clashscore for this structure is 8.

The worst 5 of 97 close contacts within the same asymmetric unit are listed below, sorted by their clash magnitude.

Atom-1	Atom-2	Interatomic distance (Å)	Clash overlap (Å)
7:A:101:FOK:H201	7:A:101:FOK:H173	1.58	0.85
3:C:172:ILE:HD12	3:C:174:CYS:SG	2.18	0.84
1:A:424:ASP:HB3	2:B:1013:GLN:HG2	1.69	0.72
3:C:368:ASP:OD1	3:C:370:GLU:HG2	1.89	0.70
2:B:1055:THR:OG1	2:B:1076:ASN:HB2	1.96	0.66

There are no symmetry-related clashes.

## 5.3 Torsion angles [i](#)

### 5.3.1 Protein backbone [i](#)

In the following table, the Percentiles column shows the percent Ramachandran outliers of the chain as a percentile score with respect to all X-ray entries followed by that with respect to entries of similar resolution.

The Analysed column shows the number of residues for which the backbone conformation was analysed, and the total number of residues.

Mol	Chain	Analysed	Favoured	Allowed	Outliers	Percentiles	
1	A	188/225 (84%)	180 (96%)	8 (4%)	0	100	100
2	B	185/212 (87%)	171 (92%)	12 (6%)	2 (1%)	17	44
3	C	330/402 (82%)	307 (93%)	20 (6%)	3 (1%)	20	50
All	All	703/839 (84%)	658 (94%)	40 (6%)	5 (1%)	25	57

All (5) Ramachandran outliers are listed below:

Mol	Chain	Res	Type
2	B	1013	GLN
3	C	138	PRO

*Continued on next page...*

*Continued from previous page...*

Mol	Chain	Res	Type
2	B	1065	LYS
3	C	386	MET
3	C	216	LYS

### 5.3.2 Protein sidechains ⓘ

In the following table, the Percentiles column shows the percent sidechain outliers of the chain as a percentile score with respect to all X-ray entries followed by that with respect to entries of similar resolution.

The Analysed column shows the number of residues for which the sidechain conformation was analysed, and the total number of residues.

Mol	Chain	Analysed	Rotameric	Outliers	Percentiles	
1	A	159/189 (84%)	148 (93%)	11 (7%)	18	43
2	B	162/184 (88%)	155 (96%)	7 (4%)	33	66
3	C	301/357 (84%)	284 (94%)	17 (6%)	25	54
All	All	622/730 (85%)	587 (94%)	35 (6%)	25	54

5 of 35 residues with a non-rotameric sidechain are listed below:

Mol	Chain	Res	Type
2	B	1044	GLU
3	C	40	THR
3	C	381	ASP
2	B	1059	ARG
2	B	1061	ILE

Some sidechains can be flipped to improve hydrogen bonding and reduce clashes. 5 of 11 such sidechains are listed below:

Mol	Chain	Res	Type
3	C	93	GLN
3	C	97	ASN
3	C	371	ASN
2	B	1050	GLN
3	C	362	HIS

### 5.3.3 RNA ⓘ

There are no RNA molecules in this entry.

## 5.4 Non-standard residues in protein, DNA, RNA chains [i](#)

There are no non-standard protein/DNA/RNA residues in this entry.

## 5.5 Carbohydrates [i](#)

There are no carbohydrates in this entry.

## 5.6 Ligand geometry [i](#)

Of 5 ligands modelled in this entry, 2 are monoatomic - leaving 3 for Mogul analysis.

In the following table, the Counts columns list the number of bonds (or angles) for which Mogul statistics could be retrieved, the number of bonds (or angles) that are observed in the model and the number of bonds (or angles) that are defined in the chemical component dictionary. The Link column lists molecule types, if any, to which the group is linked. The Z score for a bond length (or angle) is the number of standard deviations the observed value is removed from the expected value. A bond length (or angle) with  $|Z| > 2$  is considered an outlier worth inspection. RMSZ is the root-mean-square of all Z scores of the bond lengths (or angles).

Mol	Type	Chain	Res	Link	Bond lengths			Bond angles		
					Counts	RMSZ	$\# Z  > 2$	Counts	RMSZ	$\# Z  > 2$
8	POP	A	1	5	8,8,8	0.69	0	8,13,13	0.40	0
7	FOK	A	101	-	26,31,31	0.97	1 (3%)	31,54,54	2.00	8 (25%)
6	GSP	C	404	-	26,34,34	2.06	2 (7%)	24,54,54	2.01	5 (20%)

In the following table, the Chirals column lists the number of chiral outliers, the number of chiral centers analysed, the number of these observed in the model and the number defined in the chemical component dictionary. Similar counts are reported in the Torsion and Rings columns. '-' means no outliers of that kind were identified.

Mol	Type	Chain	Res	Link	Chirals	Torsions	Rings
8	POP	A	1	5	-	0/6/6/6	0/0/0/0
7	FOK	A	101	-	-	0/7/80/80	0/3/3/3
6	GSP	C	404	-	-	0/17/38/38	0/3/3/3

All (3) bond length outliers are listed below:

Mol	Chain	Res	Type	Atoms	Z	Observed(Å)	Ideal(Å)
6	C	404	GSP	PG-S1G	-9.35	1.72	1.90
6	C	404	GSP	C6-N1	2.80	1.38	1.33
7	A	101	FOK	O4-C21	3.55	1.43	1.35

The worst 5 of 13 bond angle outliers are listed below:

Mol	Chain	Res	Type	Atoms	Z	Observed(°)	Ideal(°)
6	C	404	GSP	PB-O3B-PG	-5.60	114.26	132.35
6	C	404	GSP	N3-C2-N1	-4.77	120.50	127.46
7	A	101	FOK	C7-O4-C21	-3.76	112.32	117.81
7	A	101	FOK	O4-C21-O5	-3.26	116.33	122.94
7	A	101	FOK	C20-C10-C1	-2.76	103.48	107.63

There are no chirality outliers.

There are no torsion outliers.

There are no ring outliers.

3 monomers are involved in 8 short contacts:

Mol	Chain	Res	Type	Clashes	Symm-Clashes
8	A	1	POP	1	0
7	A	101	FOK	4	0
6	C	404	GSP	3	0

## 5.7 Other polymers [i](#)

There are no such residues in this entry.

## 5.8 Polymer linkage issues [i](#)

There are no chain breaks in this entry.

## 6 Fit of model and data [i](#)

### 6.1 Protein, DNA and RNA chains [i](#)

In the following table, the column labelled ‘#RSRZ> 2’ contains the number (and percentage) of RSRZ outliers, followed by percent RSRZ outliers for the chain as percentile scores relative to all X-ray entries and entries of similar resolution. The OWAB column contains the minimum, median, 95<sup>th</sup> percentile and maximum values of the occupancy-weighted average B-factor per residue. The column labelled ‘Q< 0.9’ lists the number of (and percentage) of residues with an average occupancy less than 0.9.

Mol	Chain	Analysed	<RSRZ>	#RSRZ>2	OWAB(Å <sup>2</sup> )	Q<0.9
1	A	190/225 (84%)	0.34	15 (7%) 13 8	31, 65, 96, 100	0
2	B	189/212 (89%)	0.04	11 (5%) 24 18	25, 44, 90, 99	0
3	C	334/402 (83%)	0.28	19 (5%) 24 18	27, 48, 81, 99	0
All	All	713/839 (84%)	0.23	45 (6%) 21 15	25, 51, 88, 100	0

The worst 5 of 45 RSRZ outliers are listed below:

Mol	Chain	Res	Type	RSRZ
3	C	37	TYR	8.4
3	C	38	ARG	7.7
3	C	36	VAL	6.6
1	A	475	GLU	5.3
3	C	388	LEU	5.2

### 6.2 Non-standard residues in protein, DNA, RNA chains [i](#)

There are no non-standard protein/DNA/RNA residues in this entry.

### 6.3 Carbohydrates [i](#)

There are no carbohydrates in this entry.

### 6.4 Ligands [i](#)

In the following table, the Atoms column lists the number of modelled atoms in the group and the number defined in the chemical component dictionary. LLDF column lists the quality of electron density of the group with respect to its neighbouring residues in protein, DNA or RNA chains. The B-factors column lists the minimum, median, 95<sup>th</sup> percentile and maximum values of B factors

of atoms in the group. The column labelled 'Q < 0.9' lists the number of atoms with occupancy less than 0.9.

Mol	Type	Chain	Res	Atoms	RSCC	RSR	LLDF	B-factors( $\text{\AA}^2$ )	Q<0.9
4	CL	C	403	1/1	0.96	0.21	0.38	48,48,48,48	0
7	FOK	A	101	29/29	0.95	0.15	-0.08	22,27,29,31	0
6	GSP	C	404	32/32	0.95	0.15	-0.51	26,34,43,50	0
8	POP	A	1	9/9	0.95	0.14	-0.77	69,71,72,72	0
5	MG	A	29	1/1	0.81	0.08	-2.06	67,67,67,67	0

## 6.5 Other polymers [i](#)

There are no such residues in this entry.