



wwPDB X-ray Structure Validation Summary Report ⓘ

Sep 12, 2017 – 01:28 AM EDT

PDB ID : 5C4G
Title : Crystal structure of an engineered construct of phosphatidylinositol 4 kinase III beta with the inhibitor BQR695 in complex with GDP loaded Rab11
Authors : Burke, J.E.; Fowler, M.L.
Deposited on : unknown
Resolution : 3.20 Å(reported)

This is a wwPDB X-ray Structure Validation Summary Report for a publicly released PDB entry.

We welcome your comments at validation@mail.wwpdb.org

A user guide is available at

<http://wwpdb.org/validation/2016/XrayValidationReportHelp>

with specific help available everywhere you see the ⓘ symbol.

The following versions of software and data (see [references ⓘ](#)) were used in the production of this report:

MolProbity : 4.02b-467
Mogul : 1.7.2 (RC1), CSD as538be (2017)
Xtriage (Phenix) : 1.9-1692
EDS : rb-20029824
Percentile statistics : 20161228.v01 (using entries in the PDB archive December 28th 2016)
Refmac : 5.8.0135
CCP4 : 6.5.0
Ideal geometry (proteins) : Engh & Huber (2001)
Ideal geometry (DNA, RNA) : Parkinson et al. (1996)
Validation Pipeline (wwPDB-VP) : rb-20029824

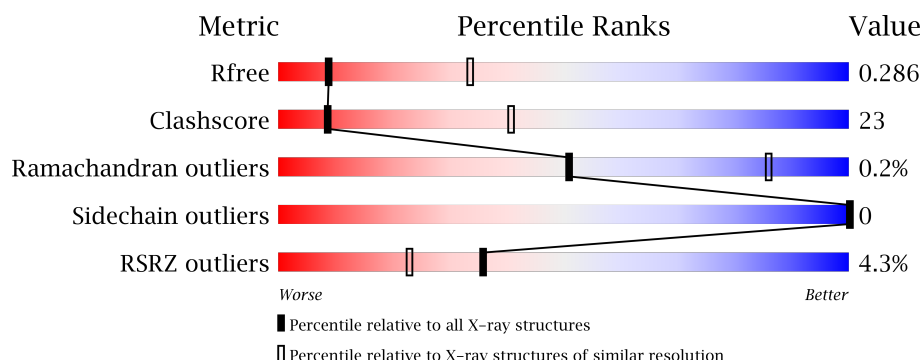
1 Overall quality at a glance

The following experimental techniques were used to determine the structure:

X-RAY DIFFRACTION

The reported resolution of this entry is 3.20 Å.

Percentile scores (ranging between 0-100) for global validation metrics of the entry are shown in the following graphic. The table shows the number of entries on which the scores are based.



Metric	Whole archive (#Entries)	Similar resolution (#Entries, resolution range(Å))
R_{free}	100719	1015 (3.22-3.18)
Clashscore	112137	1009 (3.20-3.20)
Ramachandran outliers	110173	1118 (3.22-3.18)
Sidechain outliers	110143	1117 (3.22-3.18)
RSRZ outliers	101464	1020 (3.22-3.18)

The table below summarises the geometric issues observed across the polymeric chains and their fit to the electron density. The red, orange, yellow and green segments on the lower bar indicate the fraction of residues that contain outliers for ≥ 3 , 2, 1 and 0 types of geometric quality criteria. A grey segment represents the fraction of residues that are not modelled. The numeric value for each fraction is indicated below the corresponding segment, with a dot representing fractions $\leq 5\%$. The upper red bar (where present) indicates the fraction of residues that have poor fit to the electron density. The numeric value is given above the bar.

Mol	Chain	Length	Quality of chain
1	B	219	<div> <div>8%</div> <div>45%</div> <div>26%</div> <div>29%</div> </div>
2	E	529	<div> <div>2%</div> <div>54%</div> <div>34%</div> <div>12%</div> </div>

2 Entry composition

There are 6 unique types of molecules in this entry. The entry contains 4809 atoms, of which 9 are hydrogens and 0 are deuteriums.

In the tables below, the ZeroOcc column contains the number of atoms modelled with zero occupancy, the AltConf column contains the number of residues with at least one atom in alternate conformation and the Trace column contains the number of residues modelled with at most 2 atoms.

- Molecule 1 is a protein called Ras-related protein Rab-11A.

Mol	Chain	Residues	Atoms					ZeroOcc	AltConf	Trace
1	B	156	Total	C	N	O	S	0	0	0
			1142	726	196	219	1			

There are 4 discrepancies between the modelled and reference sequences:

Chain	Residue	Modelled	Actual	Comment	Reference
B	-2	GLY	-	expression tag	UNP P62491
B	-1	SER	-	expression tag	UNP P62491
B	0	HIS	-	expression tag	UNP P62491
B	70	LEU	GLN	engineered mutation	UNP P62491

- Molecule 2 is a protein called Phosphatidylinositol 4-kinase beta.

Mol	Chain	Residues	Atoms					ZeroOcc	AltConf	Trace
2	E	466	Total	C	N	O	S	0	0	0
			3593	2316	605	648	24			

There are 5 discrepancies between the modelled and reference sequences:

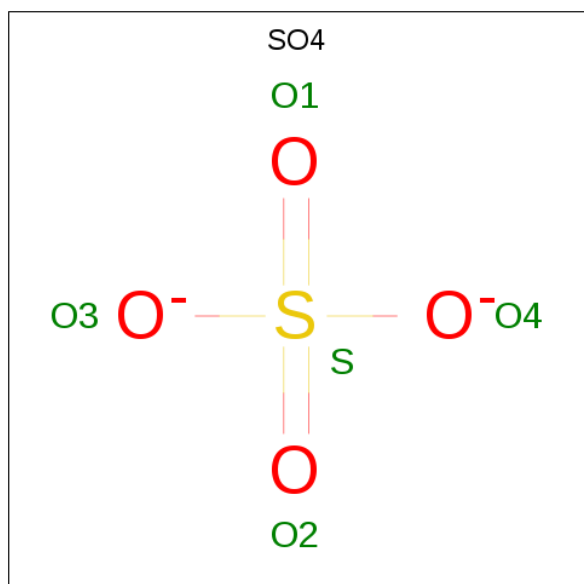
Chain	Residue	Modelled	Actual	Comment	Reference
E	117	GLY	-	expression tag	UNP Q9UBF8
E	118	SER	-	expression tag	UNP Q9UBF8
E	119	HIS	-	expression tag	UNP Q9UBF8
E	120	MET	-	expression tag	UNP Q9UBF8
E	294	ALA	SER	engineered mutation	UNP Q9UBF8

- Molecule 3 is MAGNESIUM ION (three-letter code: MG) (formula: Mg).

Mol	Chain	Residues	Atoms		ZeroOcc	AltConf
3	B	1	Total	Mg	0	0
			1	1		

-
- The image displays the chemical structure of GDP (Guanosine Diphosphate). It consists of a guanine base (a purine derivative) linked to a ribose sugar, which is in turn linked to two phosphate groups. The guanine base is shown with its characteristic fused ring system, including the amino group at the 2-position. The ribose sugar is a five-membered ring with hydroxyl groups at the 2' and 3' positions. The two phosphate groups are connected by a pyrophosphate linkage, with the second phosphate group being a diphosphate moiety. The structure is labeled with various atoms and bonds, including the guanine base (N1, C2, N3, C4, C5, N7, C8, C6, O6), the ribose sugar (C1', C2', C3', C4', C5'), and the phosphate groups (P1, P2, O1A, O1B, O2A, O2B, O3A, O3B, O4A, O4B, O5A, O5B, O6A, O6B, O7A, O7B, O8A, O8B, O9A, O9B, O10A, O10B, O11A, O11B, O12A, O12B, O13A, O13B, O14A, O14B, O15A, O15B, O16A, O16B, O17A, O17B, O18A, O18B, O19A, O19B, O20A, O20B, O21A, O21B, O22A, O22B, O23A, O23B, O24A, O24B, O25A, O25B, O26A, O26B, O27A, O27B, O28A, O28B, O29A, O29B, O30A, O30B, O31A, O31B, O32A, O32B, O33A, O33B, O34A, O34B, O35A, O35B, O36A, O36B, O37A, O37B, O38A, O38B, O39A, O39B, O40A, O40B, O41A, O41B, O42A, O42B, O43A, O43B, O44A, O44B, O45A, O45B, O46A, O46B, O47A, O47B, O48A, O48B, O49A, O49B, O50A, O50B, O51A, O51B, O52A, O52B, O53A, O53B, O54A, O54B, O55A, O55B, O56A, O56B, O57A, O57B, O58A, O58B, O59A, O59B, O60A, O60B, O61A, O61B, O62A, O62B, O63A, O63B, O64A, O64B, O65A, O65B, O66A, O66B, O67A, O67B, O68A, O68B, O69A, O69B, O70A, O70B, O71A, O71B, O72A, O72B, O73A, O73B, O74A, O74B, O75A, O75B, O76A, O76B, O77A, O77B, O78A, O78B, O79A, O79B, O80A, O80B, O81A, O81B, O82A, O82B, O83A, O83B, O84A, O84B, O85A, O85B, O86A, O86B, O87A, O87B, O88A, O88B, O89A, O89B, O90A, O90B, O91A, O91B, O92A, O92B, O93A, O93B, O94A, O94B, O95A, O95B, O96A, O96B, O97A, O97B, O98A, O98B, O99A, O99B, O100A, O100B, O101A, O101B, O102A, O102B, O103A, O103B, O104A, O104B, O105A, O105B, O106A, O106B, O107A, O107B, O108A, O108B, O109A, O109B, O110A, O110B, O111A, O111B, O112A, O112B, O113A, O113B, O114A, O114B, O115A, O115B, O116A, O116B, O117A, O117B, O118A, O118B, O119A, O119B, O120A, O120B, O121A, O121B, O122A, O122B, O123A, O123B, O124A, O124B, O125A, O125B, O126A, O126B, O127A, O127B, O128A, O128B, O129A, O129B, O130A, O130B, O131A, O131B, O132A, O132B, O133A, O133B, O134A, O134B, O135A, O135B, O136A, O136B, O137A, O137B, O138A, O138B, O139A, O139B, O140A, O140B, O141A, O141B, O142A, O142B, O143A, O143B, O144A, O144B, O145A, O145B, O146A, O146B, O147A, O147B, O148A, O148B, O149A, O149B, O150A, O150B, O151A, O151B, O152A, O152B, O153A, O153B, O154A, O154B, O155A, O155B, O156A, O156B, O157A, O157B, O158A, O158B, O159A, O159B, O160A, O160B, O161A, O161B, O162A, O162B, O163A, O163B, O164A, O164B, O165A, O165B, O166A, O166B, O167A, O167B, O168A, O168B, O169A, O169B, O170A, O170B, O171A, O171B, O172A, O172B, O173A, O173B, O174A, O174B, O175A, O175B, O176A, O176B, O177A, O177B, O178A, O178B, O179A, O179B, O180A, O180B, O181A, O181B, O182A, O182B, O183A, O183B, O184A, O184B, O185A, O185B, O186A, O186B, O187A, O187B, O188A, O188B, O189A, O189B, O190A, O190B, O191A, O191B, O192A, O192B, O193A, O193B, O194A, O194B, O195A, O195B, O196A, O196B, O197A, O197B, O198A, O198B, O199A, O199B, O200A, O200B, O201A, O201B, O202A, O202B, O203A, O203B, O204A, O204B, O205A, O205B, O206A, O206B, O207A, O207B, O208A, O208B, O209A, O209B, O210A, O210B, O211A, O211B, O212A, O212B, O213A, O213B, O214A, O214B, O215A, O215B, O216A, O216B, O217A, O217B, O218A, O218B, O219A, O219B, O220A, O220B, O221A, O221B, O222A, O222B, O223A, O223B, O224A, O224B, O225A, O225B, O226A, O226B, O227A, O227B, O228A, O228B, O229A, O229B, O230A, O230B, O231A, O231B, O232A, O232B, O233A, O233B, O234A, O234B, O235A, O235B, O236A, O236B, O237A, O237B, O238A, O238B, O239A, O239B, O240A, O240B, O241A, O241B, O242A, O242B, O243A, O243B, O244A, O244B, O245A, O245B, O246A, O246B, O247A, O247B, O248A, O248B, O249A, O249B, O250A, O250B, O251A, O251B, O252A, O252B, O253A, O253B, O254A, O254B, O255A, O255B, O256A, O256B, O257A, O257B, O258A, O258B, O259A, O259B, O260A, O260B, O261A, O261B, O262A, O262B, O263A, O263B, O264A, O264B, O265A, O265B, O266A, O266B, O267A, O267B, O268A, O268B, O269A, O269B, O270A, O270B, O271A, O271B, O272A, O272B, O273A, O273B, O274A, O274B, O275A, O275B, O276A, O276B, O277A, O277B, O278A, O278B, O279A, O279B, O280A, O280B, O281A, O281B, O282A, O282B, O283A, O283B, O284A, O284B, O285A, O285B, O286A, O286B, O287A, O287B, O288A, O288B, O289A, O289B, O290A, O290B, O291A, O291B, O292A, O292B, O293A, O293B, O294A, O294B, O295A, O295B, O296A, O296B, O297A, O297B, O298A, O298B, O299A, O299B, O300A, O300B, O301A, O301B, O302A, O302B, O303A, O303B, O304A, O304B, O305A, O305B, O306A, O306B, O307A, O307B, O308A, O308B, O309A, O309B, O310A, O310B, O311A, O311B, O312A, O312B, O313A, O313B, O314A, O314B, O315A, O315B, O316A, O316B, O317A, O317B, O318A, O318B, O319A, O319B, O320A, O320B, O321A, O321B, O322A, O322B, O323A, O323B, O324A, O324B, O325A, O325B, O326A, O326B, O327A, O327B, O328A, O328B, O329A, O329B, O330A, O330B, O331A, O331B, O332A, O332B, O333A, O333B, O334A, O334B, O335A, O335B, O336A, O336B, O337A, O337B, O338A, O338B, O339A, O339B, O340A, O340B, O

- Molecule 5 is SULFATE ION (three-letter code: SO4) (formula: O₄S).

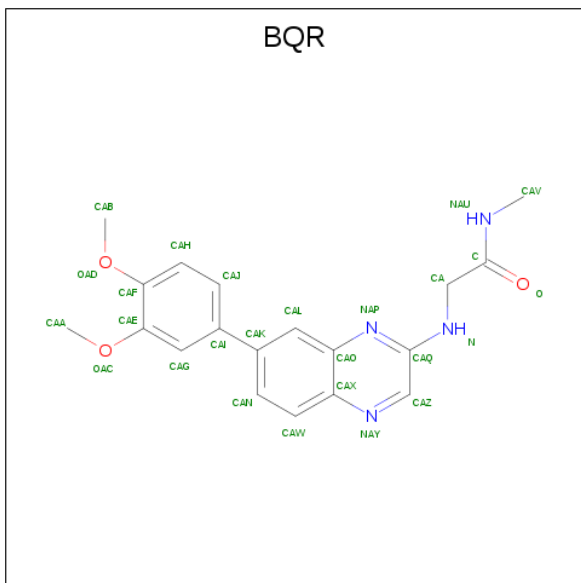


Continued on next page...

Continued from previous page...

Mol	Chain	Residues	Atoms			ZeroOcc	AltConf
5	E	1	Total	O	S	0	0
			5	4	1		

- Molecule 6 is N 2 -[7-(3,4-dimethoxyphenyl)quinoxalin-2-yl]-N-methylglycinamide (three-letter code: BQR) (formula: C₁₉H₂₀N₄O₃).



Mol	Chain	Residues	Atoms					ZeroOcc	AltConf
6	E	1	Total	C	H	N	O	0	0
			35	19	9	4	3		

4 Data and refinement statistics

Property	Value	Source
Space group	P 21 21 21	Depositor
Cell constants a, b, c, α , β , γ	48.82Å 105.40Å 188.85Å 90.00° 90.00° 90.00°	Depositor
Resolution (Å)	54.04 – 3.20 54.04 – 3.20	Depositor EDS
% Data completeness (in resolution range)	95.0 (54.04-3.20) 95.5 (54.04-3.20)	Depositor EDS
R_{merge}	0.10	Depositor
R_{sym}	(Not available)	Depositor
$\langle I/\sigma(I) \rangle$ ¹	1.93 (at 3.19Å)	Xtriage
Refinement program	PHENIX	Depositor
R, R_{free}	0.254 , 0.287 0.250 , 0.286	Depositor DCC
R_{free} test set	841 reflections (5.27%)	DCC
Wilson B-factor (Å ²)	88.5	Xtriage
Anisotropy	0.786	Xtriage
Bulk solvent k_{sol} (e/Å ³), B_{sol} (Å ²)	0.34 , 82.2	EDS
L-test for twinning ²	$\langle L \rangle = 0.46$, $\langle L^2 \rangle = 0.29$	Xtriage
Estimated twinning fraction	No twinning to report.	Xtriage
F_o, F_c correlation	0.92	EDS
Total number of atoms	4809	wwPDB-VP
Average B, all atoms (Å ²)	109.0	wwPDB-VP

Xtriage's analysis on translational NCS is as follows: *The largest off-origin peak in the Patterson function is 4.53% of the height of the origin peak. No significant pseudotranslation is detected.*

¹Intensities estimated from amplitudes.

²Theoretical values of $\langle |L| \rangle$, $\langle L^2 \rangle$ for acentric reflections are 0.5, 0.333 respectively for untwinned datasets, and 0.375, 0.2 for perfectly twinned datasets.

5 Model quality

5.1 Standard geometry

Bond lengths and bond angles in the following residue types are not validated in this section: GDP, MG, BQR, SO4

The Z score for a bond length (or angle) is the number of standard deviations the observed value is removed from the expected value. A bond length (or angle) with $|Z| > 5$ is considered an outlier worth inspection. RMSZ is the root-mean-square of all Z scores of the bond lengths (or angles).

Mol	Chain	Bond lengths		Bond angles	
		RMSZ	# Z >5	RMSZ	# Z >5
1	B	0.20	0/1161	0.35	0/1581
2	E	0.20	0/3671	0.34	0/4992
All	All	0.20	0/4832	0.34	0/6573

There are no bond length outliers.

There are no bond angle outliers.

There are no chirality outliers.

There are no planarity outliers.

5.2 Too-close contacts

In the following table, the Non-H and H(model) columns list the number of non-hydrogen atoms and hydrogen atoms in the chain respectively. The H(added) column lists the number of hydrogen atoms added and optimized by MolProbity. The Clashes column lists the number of clashes within the asymmetric unit, whereas Symm-Clashes lists symmetry related clashes.

Mol	Chain	Non-H	H(model)	H(added)	Clashes	Symm-Clashes
1	B	1142	0	1047	63	0
2	E	3593	0	3494	153	0
3	B	1	0	0	0	0
4	B	28	0	12	7	0
5	E	10	0	0	2	0
6	E	26	9	20	2	0
All	All	4800	9	4573	214	0

The all-atom clashscore is defined as the number of clashes found per 1000 atoms (including hydrogen atoms). The all-atom clashscore for this structure is 23.

The worst 5 of 214 close contacts within the same asymmetric unit are listed below, sorted by

their clash magnitude.

Atom-1	Atom-2	Interatomic distance (Å)	Clash overlap (Å)
2:E:549:LYS:HD2	6:E:803:BQR:H5	1.51	0.92
1:B:165:PHE:HA	1:B:168:ILE:HG22	1.60	0.83
1:B:24:LYS:HG2	4:B:302:GDP:O2B	1.82	0.80
2:E:333:LYS:HB3	2:E:373:VAL:HG21	1.64	0.79
1:B:114:ASP:HB3	1:B:117:ILE:HG23	1.66	0.77

There are no symmetry-related clashes.

5.3 Torsion angles [i](#)

5.3.1 Protein backbone [i](#)

In the following table, the Percentiles column shows the percent Ramachandran outliers of the chain as a percentile score with respect to all X-ray entries followed by that with respect to entries of similar resolution.

The Analysed column shows the number of residues for which the backbone conformation was analysed, and the total number of residues.

Mol	Chain	Analysed	Favoured	Allowed	Outliers	Percentiles	
1	B	150/219 (68%)	142 (95%)	8 (5%)	0	100	100
2	E	456/529 (86%)	433 (95%)	22 (5%)	1 (0%)	51	86
All	All	606/748 (81%)	575 (95%)	30 (5%)	1 (0%)	51	86

All (1) Ramachandran outliers are listed below:

Mol	Chain	Res	Type
2	E	513	PRO

5.3.2 Protein sidechains [i](#)

In the following table, the Percentiles column shows the percent sidechain outliers of the chain as a percentile score with respect to all X-ray entries followed by that with respect to entries of similar resolution.

The Analysed column shows the number of residues for which the sidechain conformation was analysed, and the total number of residues.

Mol	Chain	Analysed	Rotameric	Outliers	Percentiles	
1	B	108/191 (56%)	108 (100%)	0	100	100
2	E	381/475 (80%)	381 (100%)	0	100	100
All	All	489/666 (73%)	489 (100%)	0	100	100

There are no protein residues with a non-rotameric sidechain to report.

Some sidechains can be flipped to improve hydrogen bonding and reduce clashes. There are no such sidechains identified.

5.3.3 RNA ⓘ

There are no RNA molecules in this entry.

5.4 Non-standard residues in protein, DNA, RNA chains ⓘ

There are no non-standard protein/DNA/RNA residues in this entry.

5.5 Carbohydrates ⓘ

There are no carbohydrates in this entry.

5.6 Ligand geometry ⓘ

Of 5 ligands modelled in this entry, 1 is monoatomic - leaving 4 for Mogul analysis.

In the following table, the Counts columns list the number of bonds (or angles) for which Mogul statistics could be retrieved, the number of bonds (or angles) that are observed in the model and the number of bonds (or angles) that are defined in the chemical component dictionary. The Link column lists molecule types, if any, to which the group is linked. The Z score for a bond length (or angle) is the number of standard deviations the observed value is removed from the expected value. A bond length (or angle) with $|Z| > 2$ is considered an outlier worth inspection. RMSZ is the root-mean-square of all Z scores of the bond lengths (or angles).

Mol	Type	Chain	Res	Link	Bond lengths			Bond angles		
					Counts	RMSZ	$\# Z > 2$	Counts	RMSZ	$\# Z > 2$
4	GDP	B	302	3	25,30,30	1.16	2 (8%)	26,47,47	2.01	6 (23%)
5	SO4	E	801	-	4,4,4	0.14	0	6,6,6	0.06	0
5	SO4	E	802	-	4,4,4	0.15	0	6,6,6	0.08	0
6	BQR	E	803	-	28,28,28	1.56	7 (25%)	32,38,38	1.69	7 (21%)

In the following table, the Chirals column lists the number of chiral outliers, the number of chiral centers analysed, the number of these observed in the model and the number defined in the chemical component dictionary. Similar counts are reported in the Torsion and Rings columns. '-' means no outliers of that kind were identified.

Mol	Type	Chain	Res	Link	Chirals	Torsions	Rings
4	GDP	B	302	3	-	0/12/32/32	0/3/3/3
5	SO4	E	801	-	-	0/0/0/0	0/0/0/0
5	SO4	E	802	-	-	0/0/0/0	0/0/0/0
6	BQR	E	803	-	-	0/14/15/15	0/3/3/3

The worst 5 of 9 bond length outliers are listed below:

Mol	Chain	Res	Type	Atoms	Z	Observed(Å)	Ideal(Å)
6	E	803	BQR	CAO-NAP	-2.80	1.32	1.37
6	E	803	BQR	CA-N	-2.12	1.42	1.45
6	E	803	BQR	CAW-CAX	-2.01	1.38	1.41
6	E	803	BQR	OAC-CAE	2.46	1.41	1.37
6	E	803	BQR	OAD-CAF	2.51	1.41	1.37

The worst 5 of 13 bond angle outliers are listed below:

Mol	Chain	Res	Type	Atoms	Z	Observed(°)	Ideal(°)
4	B	302	GDP	C5-C6-N1	-3.92	117.90	123.48
4	B	302	GDP	C6-C5-C4	-3.90	116.97	120.84
4	B	302	GDP	N3-C2-N1	-3.26	122.69	127.46
4	B	302	GDP	C4-C5-N7	-2.93	106.58	109.41
6	E	803	BQR	OAC-CAE-CAG	-2.67	119.66	124.17

There are no chirality outliers.

There are no torsion outliers.

There are no ring outliers.

4 monomers are involved in 11 short contacts:

Mol	Chain	Res	Type	Clashes	Symm-Clashes
4	B	302	GDP	7	0
5	E	801	SO4	1	0
5	E	802	SO4	1	0
6	E	803	BQR	2	0

5.7 Other polymers [i](#)

There are no such residues in this entry.

5.8 Polymer linkage issues [i](#)

There are no chain breaks in this entry.

6 Fit of model and data [i](#)

6.1 Protein, DNA and RNA chains [i](#)

In the following table, the column labelled ‘#RSRZ> 2’ contains the number (and percentage) of RSRZ outliers, followed by percent RSRZ outliers for the chain as percentile scores relative to all X-ray entries and entries of similar resolution. The OWAB column contains the minimum, median, 95th percentile and maximum values of the occupancy-weighted average B-factor per residue. The column labelled ‘Q< 0.9’ lists the number of (and percentage) of residues with an average occupancy less than 0.9.

Mol	Chain	Analysed	<RSRZ>	#RSRZ>2	OWAB(Å ²)	Q<0.9
1	B	156/219 (71%)	0.73	18 (11%) 5 3	95, 131, 173, 206	0
2	E	466/529 (88%)	0.24	9 (1%) 67 52	61, 101, 142, 171	0
All	All	622/748 (83%)	0.36	27 (4%) 36 23	61, 109, 155, 206	0

The worst 5 of 27 RSRZ outliers are listed below:

Mol	Chain	Res	Type	RSRZ
1	B	118	VAL	5.2
1	B	12	PHE	4.0
1	B	62	ALA	4.0
1	B	65	TRP	3.7
1	B	149	SER	3.4

6.2 Non-standard residues in protein, DNA, RNA chains [i](#)

There are no non-standard protein/DNA/RNA residues in this entry.

6.3 Carbohydrates [i](#)

There are no carbohydrates in this entry.

6.4 Ligands [i](#)

In the following table, the Atoms column lists the number of modelled atoms in the group and the number defined in the chemical component dictionary. LLDF column lists the quality of electron density of the group with respect to its neighbouring residues in protein, DNA or RNA chains. The B-factors column lists the minimum, median, 95th percentile and maximum values of B factors of atoms in the group. The column labelled ‘Q< 0.9’ lists the number of atoms with occupancy less than 0.9.

Mol	Type	Chain	Res	Atoms	RSCC	RSR	LLDF	B-factors(\AA^2)	Q<0.9
5	SO4	E	802	5/5	0.84	0.24	0.42	144,144,149,149	0
6	BQR	E	803	26/26	0.93	0.30	0.08	67,72,89,92	0
5	SO4	E	801	5/5	0.86	0.22	-0.86	141,142,145,146	0
4	GDP	B	302	28/28	0.92	0.18	-0.94	62,100,128,133	0
3	MG	B	301	1/1	0.93	0.10	-	89,89,89,89	0

6.5 Other polymers [i](#)

There are no such residues in this entry.