



# Full wwPDB X-ray Structure Validation Report ⓘ

Jun 22, 2017 – 12:31 AM EDT

PDB ID : 4C61  
Title : Inhibitors of Jak2 Kinase domain  
Authors : Read, J.A.; Green, I.; Pollard, H.; Howard, T.  
Deposited on : 2013-09-17  
Resolution : 2.45 Å(reported)

This is a Full wwPDB X-ray Structure Validation Report for a publicly released PDB entry.

We welcome your comments at [validation@mail.wwpdb.org](mailto:validation@mail.wwpdb.org)

A user guide is available at

<http://wwpdb.org/validation/2016/XrayValidationReportHelp>

with specific help available everywhere you see the ⓘ symbol.

---

The following versions of software and data (see [references ⓘ](#)) were used in the production of this report:

MolProbity : 4.02b-467  
Mogul : 1.7.2 (RC1), CSD as538be (2017)  
Xtriage (Phenix) : 1.9-1692  
EDS : rb-20029077  
Percentile statistics : 20161228.v01 (using entries in the PDB archive December 28th 2016)  
Refmac : 5.8.0135  
CCP4 : 6.5.0  
Ideal geometry (proteins) : Engh & Huber (2001)  
Ideal geometry (DNA, RNA) : Parkinson et al. (1996)  
Validation Pipeline (wwPDB-VP) : rb-20029077

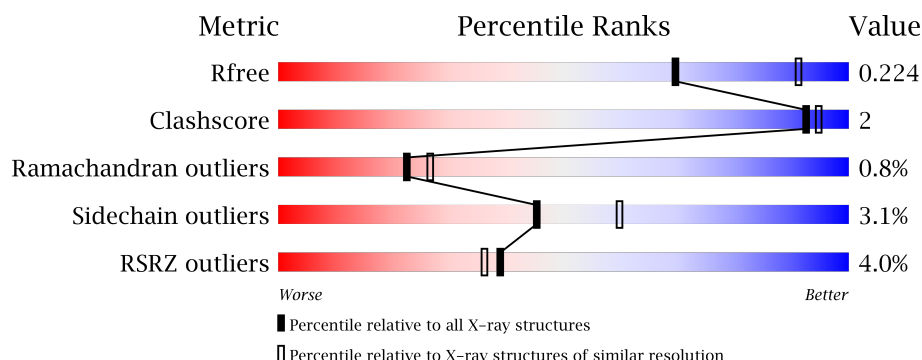
# 1 Overall quality at a glance

The following experimental techniques were used to determine the structure:

## *X-RAY DIFFRACTION*

The reported resolution of this entry is 2.45 Å.

Percentile scores (ranging between 0-100) for global validation metrics of the entry are shown in the following graphic. The table shows the number of entries on which the scores are based.



Metric	Whole archive (#Entries)	Similar resolution (#Entries, resolution range(Å))
$R_{free}$	100719	1119 (2.48-2.44)
Clashscore	112137	1193 (2.48-2.44)
Ramachandran outliers	110173	1185 (2.48-2.44)
Sidechain outliers	110143	1185 (2.48-2.44)
RSRZ outliers	101464	1126 (2.48-2.44)

The table below summarises the geometric issues observed across the polymeric chains and their fit to the electron density. The red, orange, yellow and green segments on the lower bar indicate the fraction of residues that contain outliers for  $\geq 3$ , 2, 1 and 0 types of geometric quality criteria. A grey segment represents the fraction of residues that are not modelled. The numeric value for each fraction is indicated below the corresponding segment, with a dot representing fractions  $\leq 5\%$ . The upper red bar (where present) indicates the fraction of residues that have poor fit to the electron density. The numeric value is given above the bar.

Mol	Chain	Length	Quality of chain
1	A	298	<div> <div>4%</div> <div> <div></div> <div>84%</div> <div>8%</div> <div>8%</div> </div> </div>
1	B	298	<div> <div>3%</div> <div> <div></div> <div>88%</div> <div>5%</div> <div>7%</div> </div> </div>

The following table lists non-polymeric compounds, carbohydrate monomers and non-standard residues in protein, DNA, RNA chains that are outliers for geometric or electron-density-fit criteria:

Mol	Type	Chain	Res	Chirality	Geometry	Clashes	Electron density
3	ACT	A	2134	-	-	-	X

## 2 Entry composition [i](#)

There are 4 unique types of molecules in this entry. The entry contains 4660 atoms, of which 0 are hydrogens and 0 are deuteriums.

In the tables below, the ZeroOcc column contains the number of atoms modelled with zero occupancy, the AltConf column contains the number of residues with at least one atom in alternate conformation and the Trace column contains the number of residues modelled with at most 2 atoms.

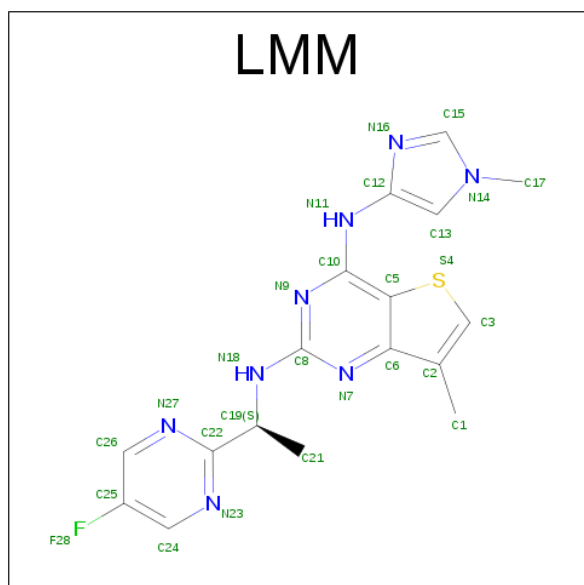
- Molecule 1 is a protein called TYROSINE-PROTEIN KINASE JAK2.

Mol	Chain	Residues	Atoms						ZeroOcc	AltConf	Trace
1	A	274	Total	C	N	O	P	S	0	0	0
			2190	1396	369	409	2	14			
1	B	276	Total	C	N	O	P	S	0	0	0
			2208	1409	376	407	2	14			

There are 4 discrepancies between the modelled and reference sequences:

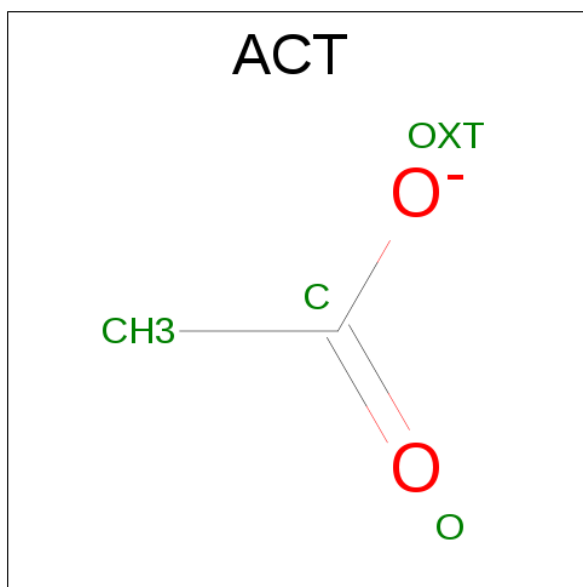
Chain	Residue	Modelled	Actual	Comment	Reference
A	943	ALA	LYS	engineered mutation	UNP O60674
A	945	ALA	LYS	engineered mutation	UNP O60674
B	943	ALA	LYS	engineered mutation	UNP O60674
B	945	ALA	LYS	engineered mutation	UNP O60674

- Molecule 2 is N2-[(1S)-1-(5-fluoropyrimidin-2-yl)ethyl]-7-methyl-N4-(1-methylimidazol-4-yl)thieno[3,2-d]pyrimidine-2,4-diamine (three-letter code: LMM) (formula: C<sub>17</sub>H<sub>17</sub>FN<sub>8</sub>S).



Mol	Chain	Residues	Atoms					ZeroOcc	AltConf
2	A	1	Total	C	F	N	S	0	0
			27	17	1	8	1		
2	B	1	Total	C	F	N	S	0	0
			27	17	1	8	1		

- Molecule 3 is ACETATE ION (three-letter code: ACT) (formula:  $C_2H_3O_2$ ).



Mol	Chain	Residues	Atoms			ZeroOcc	AltConf
3	A	1	Total	C	O	0	0
			3	2	1		
3	A	1	Total	C	O	0	0
			3	2	1		
3	B	1	Total	C	O	0	0
			3	2	1		

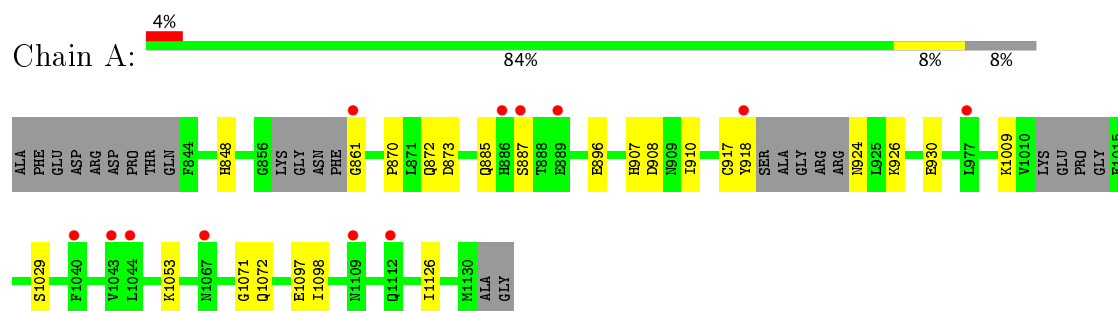
- Molecule 4 is water.

Mol	Chain	Residues	Atoms		ZeroOcc	AltConf
4	A	62	Total	O	0	0
			62	62		
4	B	137	Total	O	0	0
			137	137		

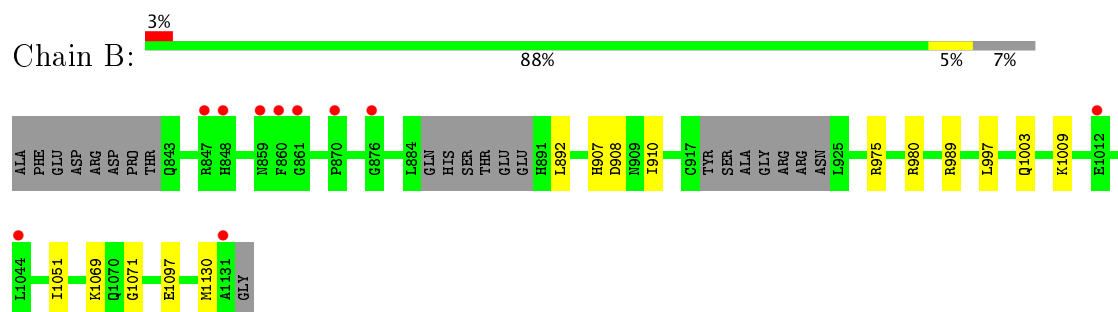
### 3 Residue-property plots [i](#)

These plots are drawn for all protein, RNA and DNA chains in the entry. The first graphic for a chain summarises the proportions of the various outlier classes displayed in the second graphic. The second graphic shows the sequence view annotated by issues in geometry and electron density. Residues are color-coded according to the number of geometric quality criteria for which they contain at least one outlier: green = 0, yellow = 1, orange = 2 and red = 3 or more. A red dot above a residue indicates a poor fit to the electron density ( $RSRZ > 2$ ). Stretches of 2 or more consecutive residues without any outlier are shown as a green connector. Residues present in the sample, but not in the model, are shown in grey.

#### • Molecule 1: TYROSINE-PROTEIN KINASE JAK2



#### • Molecule 1: TYROSINE-PROTEIN KINASE JAK2



## 4 Data and refinement statistics

Property	Value	Source
Space group	C 1 2 1	Depositor
Cell constants a, b, c, $\alpha$ , $\beta$ , $\gamma$	43.88Å 127.09Å 135.21Å 90.00° 97.33° 90.00°	Depositor
Resolution (Å)	26.82 – 2.45 26.77 – 2.45	Depositor EDS
% Data completeness (in resolution range)	96.0 (26.82-2.45) 96.1 (26.77-2.45)	Depositor EDS
$R_{merge}$	0.07	Depositor
$R_{sym}$	(Not available)	Depositor
$\langle I/\sigma(I) \rangle$ <sup>1</sup>	2.13 (at 2.44Å)	Xtriage
Refinement program	BUSTER	Depositor
R, $R_{free}$	0.181 , 0.217 0.188 , 0.224	Depositor DCC
$R_{free}$ test set	1305 reflections (5.30%)	DCC
Wilson B-factor (Å <sup>2</sup> )	43.5	Xtriage
Anisotropy	0.200	Xtriage
Bulk solvent $k_{sol}$ (e/Å <sup>3</sup> ), $B_{sol}$ (Å <sup>2</sup> )	0.31 , 57.8	EDS
L-test for twinning <sup>2</sup>	$\langle  L  \rangle = 0.48$ , $\langle L^2 \rangle = 0.31$	Xtriage
Estimated twinning fraction	0.028 for h,-k,-h-l	Xtriage
$F_o, F_c$ correlation	0.95	EDS
Total number of atoms	4660	wwPDB-VP
Average B, all atoms (Å <sup>2</sup> )	56.0	wwPDB-VP

Xtriage's analysis on translational NCS is as follows: *The largest off-origin peak in the Patterson function is 5.49% of the height of the origin peak. No significant pseudotranslation is detected.*

<sup>1</sup>Intensities estimated from amplitudes.

<sup>2</sup>Theoretical values of  $\langle |L| \rangle$ ,  $\langle L^2 \rangle$  for acentric reflections are 0.5, 0.333 respectively for untwinned datasets, and 0.375, 0.2 for perfectly twinned datasets.

## 5 Model quality

### 5.1 Standard geometry

Bond lengths and bond angles in the following residue types are not validated in this section: ACT, LMM, PTR

The Z score for a bond length (or angle) is the number of standard deviations the observed value is removed from the expected value. A bond length (or angle) with  $|Z| > 5$  is considered an outlier worth inspection. RMSZ is the root-mean-square of all Z scores of the bond lengths (or angles).

Mol	Chain	Bond lengths		Bond angles	
		RMSZ	$\# Z  > 5$	RMSZ	$\# Z  > 5$
1	A	0.48	0/2200	0.67	0/2972
1	B	0.54	0/2220	0.68	0/2998
All	All	0.51	0/4420	0.68	0/5970

There are no bond length outliers.

There are no bond angle outliers.

There are no chirality outliers.

There are no planarity outliers.

### 5.2 Too-close contacts

In the following table, the Non-H and H(model) columns list the number of non-hydrogen atoms and hydrogen atoms in the chain respectively. The H(added) column lists the number of hydrogen atoms added and optimized by MolProbity. The Clashes column lists the number of clashes within the asymmetric unit, whereas Symm-Clashes lists symmetry related clashes.

Mol	Chain	Non-H	H(model)	H(added)	Clashes	Symm-Clashes
1	A	2190	0	2096	9	0
1	B	2208	0	2130	5	0
2	A	27	0	17	1	0
2	B	27	0	17	2	0
3	A	6	0	6	0	0
3	B	3	0	3	0	0
4	A	62	0	0	1	0
4	B	137	0	0	1	0
All	All	4660	0	4269	16	0

The all-atom clashscore is defined as the number of clashes found per 1000 atoms (including hydrogen atoms). The all-atom clashscore for this structure is 2.



All (16) close contacts within the same asymmetric unit are listed below, sorted by their clash magnitude.

Atom-1	Atom-2	Interatomic distance (Å)	Clash overlap (Å)
1:A:1053:LYS:HA	4:A:2052:HOH:O	2.06	0.53
1:A:930:GLU:O	2:A:2133:LMM:H15	2.10	0.51
1:A:917:CYS:HB3	1:A:926:LYS:HB2	1.93	0.51
1:B:1051:ILE:HG22	1:B:1051:ILE:O	2.11	0.50
2:B:3134:LMM:H13	2:B:3134:LMM:N9	2.27	0.49
1:B:975:ARG:HD3	1:B:997:LEU:O	2.14	0.47
2:B:3134:LMM:N9	2:B:3134:LMM:C13	2.78	0.47
1:B:980:ARG:HD3	4:B:2069:HOH:O	2.15	0.46
1:B:907:HIS:HB3	1:B:910:ILE:HD12	1.98	0.46
1:A:848:HIS:CG	1:A:870:PRO:HA	2.52	0.44
1:A:907:HIS:HB3	1:A:910:ILE:HD12	1.99	0.43
1:A:861:GLY:HA2	1:A:885:GLN:H	1.84	0.42
1:A:1009:LYS:HA	1:A:1029:SER:O	2.20	0.42
1:B:1130:MET:HE2	1:B:1130:MET:HB3	1.93	0.41
1:A:848:HIS:CD2	1:A:870:PRO:HA	2.56	0.40
1:A:1098:ILE:HD11	1:A:1126:ILE:HG21	2.03	0.40

There are no symmetry-related clashes.

## 5.3 Torsion angles [i](#)

### 5.3.1 Protein backbone [i](#)

In the following table, the Percentiles column shows the percent Ramachandran outliers of the chain as a percentile score with respect to all X-ray entries followed by that with respect to entries of similar resolution.

The Analysed column shows the number of residues for which the backbone conformation was analysed, and the total number of residues.

Mol	Chain	Analysed	Favoured	Allowed	Outliers	Percentiles	
1	A	264/298 (89%)	254 (96%)	7 (3%)	3 (1%)	17	17
1	B	268/298 (90%)	261 (97%)	6 (2%)	1 (0%)	38	47
All	All	532/596 (89%)	515 (97%)	13 (2%)	4 (1%)	22	26

All (4) Ramachandran outliers are listed below:

Mol	Chain	Res	Type
1	A	872	GLN
1	A	873	ASP
1	A	1071	GLY
1	B	1071	GLY

### 5.3.2 Protein sidechains ⓘ

In the following table, the Percentiles column shows the percent sidechain outliers of the chain as a percentile score with respect to all X-ray entries followed by that with respect to entries of similar resolution.

The Analysed column shows the number of residues for which the sidechain conformation was analysed, and the total number of residues.

Mol	Chain	Analysed	Rotameric	Outliers	Percentiles	
1	A	229/267 (86%)	222 (97%)	7 (3%)	45	60
1	B	230/267 (86%)	223 (97%)	7 (3%)	46	60
All	All	459/534 (86%)	445 (97%)	14 (3%)	45	60

All (14) residues with a non-rotameric sidechain are listed below:

Mol	Chain	Res	Type
1	A	887	SER
1	A	896	GLU
1	A	908	ASP
1	A	918	TYR
1	A	924	ASN
1	A	1072	GLN
1	A	1097	GLU
1	B	892	LEU
1	B	908	ASP
1	B	989	ARG
1	B	1003	GLN
1	B	1009	LYS
1	B	1069	LYS
1	B	1097	GLU

Some sidechains can be flipped to improve hydrogen bonding and reduce clashes. All (3) such sidechains are listed below:

Mol	Chain	Res	Type
1	A	924	ASN

*Continued on next page...*

*Continued from previous page...*

Mol	Chain	Res	Type
1	A	950	HIS
1	B	950	HIS

### 5.3.3 RNA ⓘ

There are no RNA molecules in this entry.

## 5.4 Non-standard residues in protein, DNA, RNA chains ⓘ

4 non-standard protein/DNA/RNA residues are modelled in this entry.

In the following table, the Counts columns list the number of bonds (or angles) for which Mogul statistics could be retrieved, the number of bonds (or angles) that are observed in the model and the number of bonds (or angles) that are defined in the chemical component dictionary. The Link column lists molecule types, if any, to which the group is linked. The Z score for a bond length (or angle) is the number of standard deviations the observed value is removed from the expected value. A bond length (or angle) with  $|Z| > 2$  is considered an outlier worth inspection. RMSZ is the root-mean-square of all Z scores of the bond lengths (or angles).

Mol	Type	Chain	Res	Link	Bond lengths			Bond angles		
					Counts	RMSZ	# Z  > 2	Counts	RMSZ	# Z  > 2
1	PTR	A	1007	1	15,16,17	1.54	3 (20%)	19,22,24	1.35	1 (5%)
1	PTR	A	1008	1	15,16,17	1.45	3 (20%)	19,22,24	1.35	4 (21%)
1	PTR	B	1007	1	15,16,17	1.58	2 (13%)	19,22,24	1.37	2 (10%)
1	PTR	B	1008	1	15,16,17	2.00	6 (40%)	19,22,24	2.17	6 (31%)

In the following table, the Chirals column lists the number of chiral outliers, the number of chiral centers analysed, the number of these observed in the model and the number defined in the chemical component dictionary. Similar counts are reported in the Torsion and Rings columns. '-' means no outliers of that kind were identified.

Mol	Type	Chain	Res	Link	Chirals	Torsions	Rings
1	PTR	A	1007	1	-	0/9/11/13	0/1/1/1
1	PTR	A	1008	1	-	0/9/11/13	0/1/1/1
1	PTR	B	1007	1	-	0/9/11/13	0/1/1/1
1	PTR	B	1008	1	-	0/9/11/13	0/1/1/1

All (14) bond length outliers are listed below:

Mol	Chain	Res	Type	Atoms	Z	Observed(Å)	Ideal(Å)
1	B	1008	PTR	OH-CZ	-2.55	1.34	1.40

*Continued on next page...*

*Continued from previous page...*

Mol	Chain	Res	Type	Atoms	Z	Observed(Å)	Ideal(Å)
1	A	1008	PTR	CE1-CD1	2.06	1.42	1.38
1	B	1008	PTR	CE1-CD1	2.27	1.42	1.38
1	B	1007	PTR	CA-C	2.27	1.53	1.50
1	A	1007	PTR	CB-CA	2.30	1.58	1.53
1	A	1007	PTR	CD2-CG	2.35	1.43	1.38
1	B	1008	PTR	CD1-CG	2.58	1.44	1.38
1	A	1008	PTR	CA-C	2.65	1.53	1.50
1	B	1008	PTR	CD2-CG	2.80	1.44	1.38
1	B	1008	PTR	CE1-CZ	2.86	1.44	1.38
1	A	1008	PTR	CE1-CZ	3.01	1.44	1.38
1	A	1007	PTR	CE2-CZ	3.42	1.45	1.38
1	B	1007	PTR	CE2-CZ	3.55	1.46	1.38
1	B	1008	PTR	CA-C	4.40	1.56	1.50

All (13) bond angle outliers are listed below:

Mol	Chain	Res	Type	Atoms	Z	Observed(°)	Ideal(°)
1	B	1008	PTR	OH-CZ-CE2	-5.20	103.56	119.23
1	B	1008	PTR	CG-CB-CA	-3.26	107.71	114.29
1	B	1008	PTR	CE1-CD1-CG	-2.45	117.64	121.02
1	B	1007	PTR	OH-CZ-CE1	-2.24	112.48	119.23
1	B	1008	PTR	CD2-CE2-CZ	-2.21	116.96	119.74
1	A	1008	PTR	OH-CZ-CE2	-2.18	112.67	119.23
1	A	1008	PTR	O-C-CA	-2.16	119.06	125.02
1	A	1008	PTR	O2P-P-OH	2.28	113.74	105.63
1	B	1008	PTR	CE2-CZ-CE1	2.53	124.16	120.19
1	A	1007	PTR	OH-CZ-CE2	2.98	128.18	119.23
1	A	1008	PTR	OH-CZ-CE1	3.05	128.42	119.23
1	B	1007	PTR	OH-CZ-CE2	3.10	128.56	119.23
1	B	1008	PTR	OH-CZ-CE1	4.28	132.12	119.23

There are no chirality outliers.

There are no torsion outliers.

There are no ring outliers.

No monomer is involved in short contacts.

## 5.5 Carbohydrates ⓘ

There are no carbohydrates in this entry.

## 5.6 Ligand geometry

5 ligands are modelled in this entry.

In the following table, the Counts columns list the number of bonds (or angles) for which Mogul statistics could be retrieved, the number of bonds (or angles) that are observed in the model and the number of bonds (or angles) that are defined in the chemical component dictionary. The Link column lists molecule types, if any, to which the group is linked. The Z score for a bond length (or angle) is the number of standard deviations the observed value is removed from the expected value. A bond length (or angle) with  $|Z| > 2$  is considered an outlier worth inspection. RMSZ is the root-mean-square of all Z scores of the bond lengths (or angles).

Mol	Type	Chain	Res	Link	Bond lengths			Bond angles		
					Counts	RMSZ	$\# Z  > 2$	Counts	RMSZ	$\# Z  > 2$
2	LMM	A	2133	-	25,30,30	1.25	2 (8%)	20,43,43	1.26	2 (10%)
3	ACT	A	2134	-	2,2,3	1.19	0	1,1,3	0.98	0
3	ACT	A	2135	-	2,2,3	1.17	0	1,1,3	0.99	0
2	LMM	B	3134	-	25,30,30	1.39	3 (12%)	20,43,43	1.28	3 (15%)
3	ACT	B	3135	-	2,2,3	1.29	0	1,1,3	0.89	0

In the following table, the Chirals column lists the number of chiral outliers, the number of chiral centers analysed, the number of these observed in the model and the number defined in the chemical component dictionary. Similar counts are reported in the Torsion and Rings columns. '-' means no outliers of that kind were identified.

Mol	Type	Chain	Res	Link	Chirals	Torsions	Rings
2	LMM	A	2133	-	-	0/10/12/12	0/4/4/4
3	ACT	A	2134	-	-	0/0/0/0	0/0/0/0
3	ACT	A	2135	-	-	0/0/0/0	0/0/0/0
2	LMM	B	3134	-	-	0/10/12/12	0/4/4/4
3	ACT	B	3135	-	-	0/0/0/0	0/0/0/0

All (5) bond length outliers are listed below:

Mol	Chain	Res	Type	Atoms	Z	Observed(Å)	Ideal(Å)
2	B	3134	LMM	C24-C25	2.16	1.40	1.36
2	B	3134	LMM	C10-N11	2.68	1.40	1.36
2	A	2133	LMM	C10-N11	3.17	1.41	1.36
2	A	2133	LMM	C26-C25	3.91	1.42	1.36
2	B	3134	LMM	C26-C25	4.93	1.44	1.36

All (5) bond angle outliers are listed below:

Mol	Chain	Res	Type	Atoms	Z	Observed(°)	Ideal(°)
2	B	3134	LMM	C21-C19-C22	-2.73	107.60	111.02
2	A	2133	LMM	C21-C19-C22	-2.66	107.69	111.02
2	B	3134	LMM	C25-C26-N27	-2.11	120.38	121.58
2	B	3134	LMM	N23-C22-N27	2.04	128.88	126.02
2	A	2133	LMM	F28-C25-C26	3.32	122.52	118.95

There are no chirality outliers.

There are no torsion outliers.

There are no ring outliers.

2 monomers are involved in 3 short contacts:

Mol	Chain	Res	Type	Clashes	Symm-Clashes
2	A	2133	LMM	1	0
2	B	3134	LMM	2	0

## 5.7 Other polymers [i](#)

There are no such residues in this entry.

## 5.8 Polymer linkage issues [i](#)

There are no chain breaks in this entry.

## 6 Fit of model and data

### 6.1 Protein, DNA and RNA chains

In the following table, the column labelled ‘#RSRZ> 2’ contains the number (and percentage) of RSRZ outliers, followed by percent RSRZ outliers for the chain as percentile scores relative to all X-ray entries and entries of similar resolution. The OWAB column contains the minimum, median, 95<sup>th</sup> percentile and maximum values of the occupancy-weighted average B-factor per residue. The column labelled ‘Q< 0.9’ lists the number of (and percentage) of residues with an average occupancy less than 0.9.

Mol	Chain	Analysed	<RSRZ>	#RSRZ>2	OWAB(Å <sup>2</sup> )	Q<0.9
1	A	272/298 (91%)	0.02	12 (4%) 35 33	34, 58, 94, 110	0
1	B	274/298 (91%)	-0.09	10 (3%) 43 40	22, 48, 94, 122	0
All	All	546/596 (91%)	-0.03	22 (4%) 39 36	22, 54, 94, 122	0

All (22) RSRZ outliers are listed below:

Mol	Chain	Res	Type	RSRZ
1	B	859	ASN	4.6
1	B	848	HIS	3.9
1	B	1131	ALA	3.3
1	A	918	TYR	3.3
1	B	870	PRO	3.3
1	A	1043	VAL	3.2
1	A	1044	LEU	3.1
1	B	1044	LEU	2.8
1	B	847	ARG	2.8
1	A	1109	ASN	2.7
1	A	1067	ASN	2.7
1	A	887	SER	2.6
1	A	889	GLU	2.6
1	A	886	HIS	2.6
1	B	876	GLY	2.4
1	A	861	GLY	2.4
1	A	1040	PHE	2.3
1	A	1112	GLN	2.2
1	B	861	GLY	2.2
1	B	860	PHE	2.1
1	B	1012	GLU	2.1
1	A	977	LEU	2.1

## 6.2 Non-standard residues in protein, DNA, RNA chains ⓘ

In the following table, the Atoms column lists the number of modelled atoms in the group and the number defined in the chemical component dictionary. LLDF column lists the quality of electron density of the group with respect to its neighbouring residues in protein, DNA or RNA chains. The B-factors column lists the minimum, median, 95<sup>th</sup> percentile and maximum values of B factors of atoms in the group. The column labelled 'Q< 0.9' lists the number of atoms with occupancy less than 0.9.

Mol	Type	Chain	Res	Atoms	RSCC	RSR	LLDF	B-factors(Å <sup>2</sup> )	Q<0.9
1	PTR	B	1007	16/17	0.96	0.11	-	40,47,61,61	0
1	PTR	A	1007	16/17	0.91	0.24	-	83,96,114,115	0
1	PTR	A	1008	16/17	0.93	0.15	-	77,88,104,105	0
1	PTR	B	1008	16/17	0.98	0.09	-	35,45,64,65	0

## 6.3 Carbohydrates ⓘ

There are no carbohydrates in this entry.

## 6.4 Ligands ⓘ

In the following table, the Atoms column lists the number of modelled atoms in the group and the number defined in the chemical component dictionary. LLDF column lists the quality of electron density of the group with respect to its neighbouring residues in protein, DNA or RNA chains. The B-factors column lists the minimum, median, 95<sup>th</sup> percentile and maximum values of B factors of atoms in the group. The column labelled 'Q< 0.9' lists the number of atoms with occupancy less than 0.9.

Mol	Type	Chain	Res	Atoms	RSCC	RSR	LLDF	B-factors(Å <sup>2</sup> )	Q<0.9
3	ACT	A	2134	3/4	0.53	0.48	21.69	82,82,83,83	0
3	ACT	B	3135	3/4	0.93	0.18	1.80	54,54,55,57	0
2	LMM	B	3134	27/27	0.96	0.12	-0.46	33,42,56,57	0
2	LMM	A	2133	27/27	0.98	0.09	-1.08	27,33,39,47	0
3	ACT	A	2135	3/4	0.84	0.15	-	80,80,81,82	0

## 6.5 Other polymers ⓘ

There are no such residues in this entry.