



Full wwPDB X-ray Structure Validation Report ⓘ

Sep 25, 2017 – 11:55 PM EDT

PDB ID : 1C8M
Title : REFINED CRYSTAL STRUCTURE OF HUMAN RHINOVIRUS 16 COM-
PLEXED WITH VP63843 (PLECONARIL), AN ANTI-PICORNAVIRAL
DRUG CURRENTLY IN CLINICAL TRIALS
Authors : Chakravarty, S.; Bator, C.M.; Pevear, D.C.; Diana, G.D.; Rossmann, M.G.
Deposited on : unknown
Resolution : 2.80 Å(reported)

This is a Full wwPDB X-ray Structure Validation Report for a publicly released PDB entry.

We welcome your comments at validation@mail.wwpdb.org

A user guide is available at

<http://wwpdb.org/validation/2016/XrayValidationReportHelp>

with specific help available everywhere you see the ⓘ symbol.

The following versions of software and data (see [references ⓘ](#)) were used in the production of this report:

MolProbity : 4.02b-467
Mogul : 1.7.2 (RC1), CSD as538be (2017)
Xtriage (Phenix) : **NOT EXECUTED**
EDS : **NOT EXECUTED**
Percentile statistics : 20161228.v01 (using entries in the PDB archive December 28th 2016)
Ideal geometry (proteins) : Engh & Huber (2001)
Ideal geometry (DNA, RNA) : Parkinson et al. (1996)
Validation Pipeline (wwPDB-VP) : rb-20030345

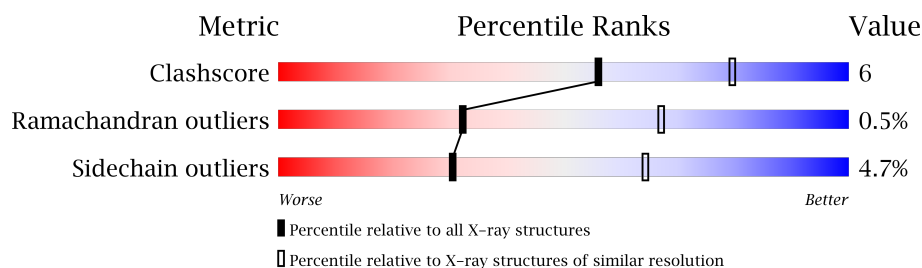
1 Overall quality at a glance

The following experimental techniques were used to determine the structure:

X-RAY DIFFRACTION

The reported resolution of this entry is 2.80 Å.

Percentile scores (ranging between 0-100) for global validation metrics of the entry are shown in the following graphic. The table shows the number of entries on which the scores are based.



Metric	Whole archive (#Entries)	Similar resolution (#Entries, resolution range(Å))
Clashscore	112137	3033 (2.80-2.80)
Ramachandran outliers	110173	2983 (2.80-2.80)
Sidechain outliers	110143	2985 (2.80-2.80)

The table below summarises the geometric issues observed across the polymeric chains and their fit to the electron density. The red, orange, yellow and green segments on the lower bar indicate the fraction of residues that contain outliers for ≥ 3 , 2, 1 and 0 types of geometric quality criteria. A grey segment represents the fraction of residues that are not modelled. The numeric value for each fraction is indicated below the corresponding segment, with a dot representing fractions $\leq 5\%$. The upper red bar (where present) indicates the fraction of residues that have poor fit to the electron density. The numeric value is given above the bar.

Note EDS was not executed.

Mol	Chain	Length	Quality of chain
1	1	285	
2	2	252	
3	3	238	
4	4	77	

2 Entry composition

There are 7 unique types of molecules in this entry. The entry contains 6820 atoms, of which 0 are hydrogens and 0 are deuteriums.

In the tables below, the ZeroOcc column contains the number of atoms modelled with zero occupancy, the AltConf column contains the number of residues with at least one atom in alternate conformation and the Trace column contains the number of residues modelled with at most 2 atoms.

- Molecule 1 is a protein called HUMAN RHINOVIRUS 16 COAT PROTEIN.

Mol	Chain	Residues	Atoms					ZeroOcc	AltConf	Trace
1	1	285	Total	C	N	O	S	0	0	0
			2275	1436	393	435	11			

- Molecule 2 is a protein called HUMAN RHINOVIRUS 16 COAT PROTEIN.

Mol	Chain	Residues	Atoms					ZeroOcc	AltConf	Trace
2	2	252	Total	C	N	O	S	0	0	0
			1965	1245	341	369	10			

- Molecule 3 is a protein called HUMAN RHINOVIRUS 16 COAT PROTEIN.

Mol	Chain	Residues	Atoms					ZeroOcc	AltConf	Trace
3	3	238	Total	C	N	O	S	0	0	0
			1846	1186	298	347	15			

- Molecule 4 is a protein called HUMAN RHINOVIRUS 16 COAT PROTEIN.

Mol	Chain	Residues	Atoms				ZeroOcc	AltConf	Trace
4	4	29	Total	C	N	O	0	0	0
			224	138	41	45			

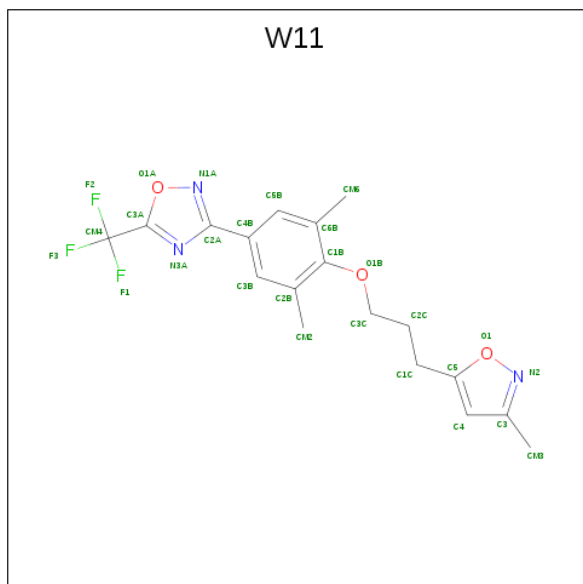
There is a discrepancy between the modelled and reference sequences:

Chain	Residue	Modelled	Actual	Comment	Reference
4	24	ILE	LEU	CONFLICT	UNP Q82122

- Molecule 5 is ZINC ION (three-letter code: ZN) (formula: Zn).

Mol	Chain	Residues	Atoms		ZeroOcc	AltConf
5	1	1	Total	Zn	0	0
			1	1		

- Molecule 6 is 3-{3,5-DIMETHYL-4-[3-(3-METHYL-ISOXAZOL-5-YL)-PROPOXY]-PHE
NYL}-5-TRIFLUOROMETHYL-[1,2,4]OXADIAZOLE (three-letter code: W11) (formula:
 $C_{18}H_{18}F_3N_3O_3$).



Mol	Chain	Residues	Atoms					ZeroOcc	AltConf
6	1	1	Total	C	F	N	O	0	0
			27	18	3	3	3		

- Molecule 7 is water.

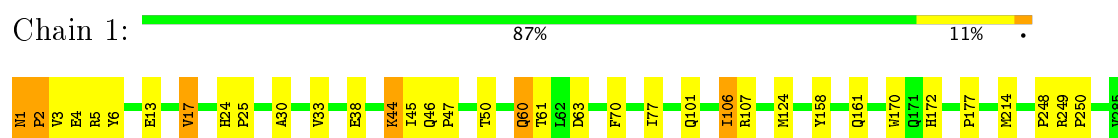
Mol	Chain	Residues	Atoms		ZeroOcc	AltConf
7	1	155	Total	O	0	0
			155	155		
7	2	170	Total	O	0	0
			170	170		
7	3	139	Total	O	0	0
			139	139		
7	4	18	Total	O	0	0
			18	18		

3 Residue-property plots [i](#)

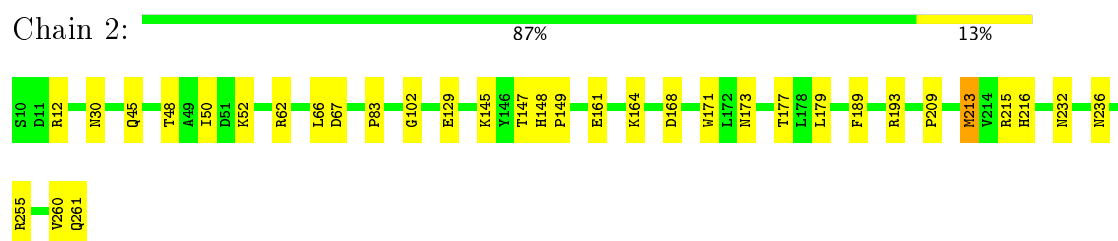
These plots are drawn for all protein, RNA and DNA chains in the entry. The first graphic for a chain summarises the proportions of the various outlier classes displayed in the second graphic. The second graphic shows the sequence view annotated by issues in geometry and electron density. Residues are color-coded according to the number of geometric quality criteria for which they contain at least one outlier: green = 0, yellow = 1, orange = 2 and red = 3 or more. A red dot above a residue indicates a poor fit to the electron density ($RSRZ > 2$). Stretches of 2 or more consecutive residues without any outlier are shown as a green connector. Residues present in the sample, but not in the model, are shown in grey.

Note EDS was not executed.

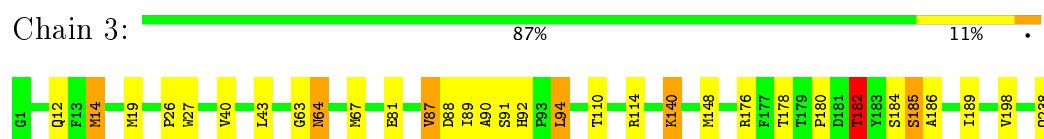
• Molecule 1: HUMAN RHINOVIRUS 16 COAT PROTEIN



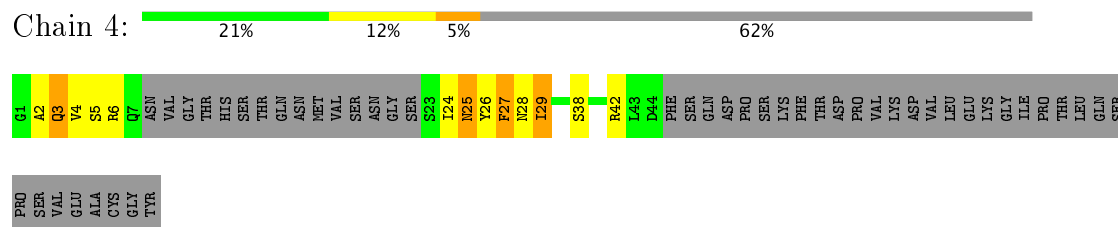
• Molecule 2: HUMAN RHINOVIRUS 16 COAT PROTEIN



• Molecule 3: HUMAN RHINOVIRUS 16 COAT PROTEIN



• Molecule 4: HUMAN RHINOVIRUS 16 COAT PROTEIN



4 Data and refinement statistics

Xtriage (Phenix) and EDS were not executed - this section is therefore incomplete.

Property	Value	Source
Space group	P 2 21 21	Depositor
Cell constants a, b, c, α , β , γ	360.30Å 343.33Å 332.63Å 90.00° 90.00° 90.00°	Depositor
Resolution (Å)	20.00 – 2.80	Depositor
% Data completeness (in resolution range)	92.6 (20.00-2.80)	Depositor
R_{merge}	0.14	Depositor
R_{sym}	(Not available)	Depositor
Refinement program	X-PLOR	Depositor
R, R_{free}	0.219 , 0.226	Depositor
Estimated twinning fraction	No twinning to report.	Xtriage
Total number of atoms	6820	wwPDB-VP
Average B, all atoms (Å ²)	18.0	wwPDB-VP

5 Model quality

5.1 Standard geometry

Bond lengths and bond angles in the following residue types are not validated in this section: ZN, W11

The Z score for a bond length (or angle) is the number of standard deviations the observed value is removed from the expected value. A bond length (or angle) with $|Z| > 5$ is considered an outlier worth inspection. RMSZ is the root-mean-square of all Z scores of the bond lengths (or angles).

Mol	Chain	Bond lengths		Bond angles	
		RMSZ	$\# Z > 5$	RMSZ	$\# Z > 5$
1	1	0.55	1/2337 (0.0%)	0.76	3/3188 (0.1%)
2	2	0.49	0/2017	0.78	1/2753 (0.0%)
3	3	0.52	0/1898	0.80	3/2596 (0.1%)
4	4	1.03	0/226	0.90	0/301
All	All	0.55	1/6478 (0.0%)	0.78	7/8838 (0.1%)

Chiral center outliers are detected by calculating the chiral volume of a chiral center and verifying if the center is modelled as a planar moiety or with the opposite hand. A planarity outlier is detected by checking planarity of atoms in a peptide group, atoms in a mainchain group or atoms of a sidechain that are expected to be planar.

Mol	Chain	#Chirality outliers	#Planarity outliers
3	3	1	0

All (1) bond length outliers are listed below:

Mol	Chain	Res	Type	Atoms	Z	Observed(Å)	Ideal(Å)
1	1	1	ASN	C-N	-7.62	1.19	1.34

All (7) bond angle outliers are listed below:

Mol	Chain	Res	Type	Atoms	Z	Observed(°)	Ideal(°)
3	3	92	HIS	N-CA-C	9.36	136.26	111.00
1	1	2	PRO	CA-N-CD	7.40	122.06	111.70
1	1	1	ASN	N-CA-C	-6.81	92.62	111.00
3	3	92	HIS	C-N-CD	6.36	141.75	128.40
2	2	50	ILE	N-CA-C	5.24	125.15	111.00
1	1	30	ALA	N-CA-C	-5.14	97.12	111.00
3	3	186	ALA	N-CA-C	5.14	124.88	111.00

All (1) chirality outliers are listed below:

Mol	Chain	Res	Type	Atom
3	3	92	HIS	CA

There are no planarity outliers.

5.2 Too-close contacts ⓘ

In the following table, the Non-H and H(model) columns list the number of non-hydrogen atoms and hydrogen atoms in the chain respectively. The H(added) column lists the number of hydrogen atoms added and optimized by MolProbity. The Clashes column lists the number of clashes within the asymmetric unit, whereas Symm-Clashes lists symmetry related clashes.

Mol	Chain	Non-H	H(model)	H(added)	Clashes	Symm-Clashes
1	1	2275	0	2182	30	0
2	2	1965	0	1899	17	0
3	3	1846	0	1826	20	0
4	4	224	0	211	12	0
5	1	1	0	0	0	0
6	1	27	0	18	3	0
7	1	155	0	0	4	0
7	2	170	0	0	2	0
7	3	139	0	0	6	0
7	4	18	0	0	0	0
All	All	6820	0	6136	72	0

The all-atom clashscore is defined as the number of clashes found per 1000 atoms (including hydrogen atoms). The all-atom clashscore for this structure is 6.

All (72) close contacts within the same asymmetric unit are listed below, sorted by their clash magnitude.

Atom-1	Atom-2	Interatomic distance (Å)	Clash overlap (Å)
6:1:7001:W11:O1A	6:1:7001:W11:N1A	1.58	1.11
4:4:2:ALA:HB2	4:4:29:ILE:HA	1.36	1.05
3:3:87:VAL:HG23	3:3:189:ILE:HG13	1.55	0.88
4:4:2:ALA:CB	4:4:29:ILE:HA	2.08	0.81
4:4:4:VAL:HG22	4:4:27:PHE:HD2	1.50	0.74
1:1:2:PRO:HD2	7:1:5475:HOH:O	1.87	0.74
1:1:158:TYR:O	1:1:161:GLN:HG3	1.89	0.72
4:4:4:VAL:HG22	4:4:27:PHE:CD2	2.24	0.71
1:1:124:MET:HB2	1:1:177:PRO:HG2	1.80	0.63

Continued on next page...

Continued from previous page...

Atom-1	Atom-2	Interatomic distance (Å)	Clash overlap (Å)
1:1:170:TRP:CD1	1:1:177:PRO:HD3	2.34	0.62
2:2:173:ASN:HD21	2:2:179:LEU:HA	1.66	0.60
3:3:88:ASP:HB2	3:3:91:SER:HB3	1.84	0.59
4:4:5:SER:O	4:4:25:ASN:HA	2.02	0.59
4:4:25:ASN:H	4:4:25:ASN:ND2	2.00	0.58
3:3:12:GLN:NE2	7:3:5468:HOH:O	2.37	0.58
1:1:24:HIS:HB3	1:1:25:PRO:HD2	1.88	0.56
2:2:83:PRO:CG	2:2:213:MET:HG3	2.37	0.55
2:2:83:PRO:HG3	2:2:213:MET:HG3	1.89	0.54
1:1:2:PRO:O	1:1:5:ARG:CB	2.56	0.54
4:4:26:TYR:HE2	4:4:42:ARG:HH21	1.56	0.53
3:3:176:ARG:HG2	3:3:184:SER:HB2	1.91	0.53
3:3:26:PRO:HG2	7:3:5300:HOH:O	2.08	0.52
4:4:6:ARG:HG2	4:4:25:ASN:OD1	2.10	0.52
2:2:67:ASP:HB2	7:2:5290:HOH:O	2.11	0.51
3:3:182:THR:O	3:3:185:SER:HB3	2.10	0.51
1:1:17:VAL:HG21	7:3:5425:HOH:O	2.10	0.51
1:1:33:VAL:HG12	1:1:45:ILE:CD1	2.41	0.51
1:1:13:GLU:HA	1:1:61:THR:HG21	1.93	0.51
2:2:147:THR:C	2:2:149:PRO:HD3	2.32	0.50
1:1:106:ILE:HG23	7:1:5020:HOH:O	2.12	0.50
3:3:27:TRP:HE3	7:3:5300:HOH:O	1.95	0.49
1:1:248:PRO:HD3	3:3:40:VAL:CG2	2.42	0.49
2:2:148:HIS:N	2:2:149:PRO:HD3	2.27	0.49
1:1:38:GLU:HA	2:2:189:PHE:HB2	1.94	0.49
2:2:129:GLU:OE1	2:2:216:HIS:HE1	1.96	0.48
1:1:60:GLN:H	1:1:60:GLN:CD	2.16	0.48
1:1:1:ASN:CA	7:1:5475:HOH:O	2.61	0.47
1:1:44:LYS:HD2	1:1:44:LYS:HA	1.53	0.47
2:2:255:ARG:HH11	2:2:255:ARG:HG3	1.80	0.47
2:2:62:ARG:HD3	7:2:5160:HOH:O	2.15	0.47
1:1:33:VAL:HG12	1:1:50:THR:HG22	1.97	0.47
2:2:171:TRP:CE2	3:3:63:GLY:HA2	2.50	0.47
1:1:45:ILE:O	3:3:114:ARG:NH1	2.49	0.46
1:1:6:TYR:HE2	7:1:5287:HOH:O	1.98	0.46
1:1:33:VAL:HA	1:1:45:ILE:HD12	1.99	0.45
4:4:26:TYR:CZ	4:4:28:ASN:HB2	2.51	0.45
1:1:2:PRO:O	1:1:5:ARG:N	2.50	0.45
3:3:198:VAL:HG23	7:3:5401:HOH:O	2.17	0.45
3:3:64:ASN:O	3:3:67:MET:HG2	2.16	0.45
1:1:249:ARG:HB2	1:1:250:PRO:CD	2.47	0.44

Continued on next page...

Continued from previous page...

Atom-1	Atom-2	Interatomic distance (Å)	Clash overlap (Å)
1:1:46:GLN:HB3	1:1:47:PRO:HD2	1.99	0.44
1:1:3:VAL:HG11	4:4:24:ILE:HG23	1.99	0.44
1:1:1:ASN:O	1:1:4:GLU:N	2.49	0.44
3:3:87:VAL:CG2	3:3:189:ILE:HG13	2.37	0.44
1:1:101:GLN:HA	1:1:107:ARG:HD2	2.00	0.44
4:4:25:ASN:HD22	4:4:25:ASN:H	1.63	0.44
1:1:77:ILE:HD11	6:1:7001:W11:HM21	1.99	0.44
2:2:145:LYS:HB3	2:2:261:GLN:OE1	2.18	0.44
1:1:77:ILE:HD11	6:1:7001:W11:CM2	2.48	0.43
2:2:48:THR:HG22	2:2:209:PRO:CG	2.49	0.43
3:3:90:ALA:HB3	3:3:178:THR:O	2.19	0.43
3:3:89:ILE:HD12	3:3:89:ILE:HA	1.77	0.43
3:3:88:ASP:O	3:3:94:LEU:HD11	2.19	0.42
3:3:14:MET:HG3	7:3:5468:HOH:O	2.20	0.41
1:1:60:GLN:HG2	3:3:110:THR:HG21	2.02	0.41
2:2:48:THR:HG22	2:2:209:PRO:HG3	2.02	0.41
2:2:102:GLY:HA3	2:2:213:MET:SD	2.60	0.41
2:2:260:VAL:CG1	2:2:261:GLN:N	2.84	0.41
4:4:3:GLN:O	4:4:3:GLN:HG2	2.21	0.41
3:3:81:GLU:OE2	3:3:140:LYS:HE3	2.21	0.40
1:1:70:PHE:CD1	3:3:43:LEU:HD11	2.57	0.40
1:1:250:PRO:HB2	2:2:177:THR:HB	2.03	0.40

There are no symmetry-related clashes.

5.3 Torsion angles [i](#)

5.3.1 Protein backbone [i](#)

In the following table, the Percentiles column shows the percent Ramachandran outliers of the chain as a percentile score with respect to all X-ray entries followed by that with respect to entries of similar resolution.

The Analysed column shows the number of residues for which the backbone conformation was analysed, and the total number of residues.

Mol	Chain	Analysed	Favoured	Allowed	Outliers	Percentiles	
1	1	283/285 (99%)	275 (97%)	8 (3%)	0	100	100
2	2	250/252 (99%)	230 (92%)	19 (8%)	1 (0%)	38	72
3	3	236/238 (99%)	223 (94%)	11 (5%)	2 (1%)	22	55

Continued on next page...

Continued from previous page...

Mol	Chain	Analysed	Favoured	Allowed	Outliers	Percentiles	
4	4	25/77 (32%)	22 (88%)	2 (8%)	1 (4%)	3	11
All	All	794/852 (93%)	750 (94%)	40 (5%)	4 (0%)	32	67

All (4) Ramachandran outliers are listed below:

Mol	Chain	Res	Type
2	2	161	GLU
3	3	182	THR
4	4	27	PHE
3	3	180	PRO

5.3.2 Protein sidechains ⓘ

In the following table, the Percentiles column shows the percent sidechain outliers of the chain as a percentile score with respect to all X-ray entries followed by that with respect to entries of similar resolution.

The Analysed column shows the number of residues for which the sidechain conformation was analysed, and the total number of residues.

Mol	Chain	Analysed	Rotameric	Outliers	Percentiles	
1	1	253/256 (99%)	246 (97%)	7 (3%)	49	82
2	2	217/221 (98%)	205 (94%)	12 (6%)	25	57
3	3	210/210 (100%)	200 (95%)	10 (5%)	30	63
4	4	23/66 (35%)	19 (83%)	4 (17%)	2	7
All	All	703/753 (93%)	670 (95%)	33 (5%)	30	64

All (33) residues with a non-rotameric sidechain are listed below:

Mol	Chain	Res	Type
1	1	17	VAL
1	1	44	LYS
1	1	60	GLN
1	1	63	ASP
1	1	106	ILE
1	1	172	HIS
1	1	214	MET
2	2	12	ARG
2	2	30	ASN
2	2	45	GLN

Continued on next page...

Continued from previous page...

Mol	Chain	Res	Type
2	2	52	LYS
2	2	66	LEU
2	2	164	LYS
2	2	168	ASP
2	2	193	ARG
2	2	213	MET
2	2	215	ARG
2	2	232	ASN
2	2	236	ASN
3	3	14	MET
3	3	19	MET
3	3	64	ASN
3	3	87	VAL
3	3	94	LEU
3	3	140	LYS
3	3	148	MET
3	3	182	THR
3	3	185	SER
3	3	238	GLN
4	4	3	GLN
4	4	25	ASN
4	4	29	ILE
4	4	38	SER

Some sidechains can be flipped to improve hydrogen bonding and reduce clashes. All (11) such sidechains are listed below:

Mol	Chain	Res	Type
1	1	12	ASN
1	1	89	ASN
1	1	171	GLN
2	2	30	ASN
2	2	55	GLN
2	2	173	ASN
2	2	216	HIS
2	2	232	ASN
3	3	12	GLN
3	3	174	GLN
4	4	25	ASN

5.3.3 RNA [i](#)

There are no RNA molecules in this entry.

5.4 Non-standard residues in protein, DNA, RNA chains [i](#)

There are no non-standard protein/DNA/RNA residues in this entry.

5.5 Carbohydrates [i](#)

There are no carbohydrates in this entry.

5.6 Ligand geometry [i](#)

Of 2 ligands modelled in this entry, 1 is monoatomic - leaving 1 for Mogul analysis.

In the following table, the Counts columns list the number of bonds (or angles) for which Mogul statistics could be retrieved, the number of bonds (or angles) that are observed in the model and the number of bonds (or angles) that are defined in the Chemical Component Dictionary. The Link column lists molecule types, if any, to which the group is linked. The Z score for a bond length (or angle) is the number of standard deviations the observed value is removed from the expected value. A bond length (or angle) with $|Z| > 2$ is considered an outlier worth inspection. RMSZ is the root-mean-square of all Z scores of the bond lengths (or angles).

Mol	Type	Chain	Res	Link	Bond lengths			Bond angles		
					Counts	RMSZ	$\# Z > 2$	Counts	RMSZ	$\# Z > 2$
6	W11	1	7001	-	22,29,29	2.36	10 (45%)	32,42,42	2.91	18 (56%)

In the following table, the Chirals column lists the number of chiral outliers, the number of chiral centers analysed, the number of these observed in the model and the number defined in the Chemical Component Dictionary. Similar counts are reported in the Torsion and Rings columns. '-' means no outliers of that kind were identified.

Mol	Type	Chain	Res	Link	Chirals	Torsions	Rings
6	W11	1	7001	-	-	0/13/17/17	0/1/3/3

All (10) bond length outliers are listed below:

Mol	Chain	Res	Type	Atoms	Z	Observed(Å)	Ideal(Å)
6	1	7001	W11	C4B-C2A	-2.32	1.42	1.48
6	1	7001	W11	CM2-C2B	-2.18	1.46	1.51
6	1	7001	W11	C5B-C4B	2.05	1.43	1.39
6	1	7001	W11	C4-C3	2.18	1.44	1.39

Continued on next page...

Continued from previous page...

Mol	Chain	Res	Type	Atoms	Z	Observed(Å)	Ideal(Å)
6	1	7001	W11	F1-CM4	2.31	1.41	1.32
6	1	7001	W11	C5B-C6B	2.35	1.43	1.39
6	1	7001	W11	CM6-C6B	3.13	1.57	1.51
6	1	7001	W11	CM4-C3A	3.37	1.54	1.50
6	1	7001	W11	C1B-C6B	4.46	1.48	1.40
6	1	7001	W11	C2A-N3A	6.33	1.44	1.35

All (18) bond angle outliers are listed below:

Mol	Chain	Res	Type	Atoms	Z	Observed(°)	Ideal(°)
6	1	7001	W11	C4B-C3B-C2B	-5.65	114.86	122.34
6	1	7001	W11	C4B-C5B-C6B	-4.29	116.66	122.34
6	1	7001	W11	C3B-C4B-C2A	-3.83	114.97	120.22
6	1	7001	W11	O1B-C3C-C2C	-3.41	95.46	108.34
6	1	7001	W11	CM6-C6B-C5B	-3.39	113.36	119.53
6	1	7001	W11	F2-CM4-C3A	-2.87	106.60	112.26
6	1	7001	W11	C2C-C1C-C5	-2.67	103.78	113.12
6	1	7001	W11	F1-CM4-C3A	-2.65	107.04	112.26
6	1	7001	W11	O1B-C1B-C2B	-2.46	114.88	118.94
6	1	7001	W11	CM2-C2B-C1B	-2.40	117.06	120.88
6	1	7001	W11	C6B-C1B-C2B	-2.14	117.51	122.14
6	1	7001	W11	C3C-O1B-C1B	2.62	121.81	114.07
6	1	7001	W11	C1C-C5-C4	2.73	136.98	129.10
6	1	7001	W11	CM4-C3A-N3A	3.78	126.09	122.41
6	1	7001	W11	CM6-C6B-C1B	4.05	127.31	120.88
6	1	7001	W11	C3B-C2B-C1B	5.07	125.50	117.84
6	1	7001	W11	C5B-C4B-C3B	5.23	126.21	118.29
6	1	7001	W11	O1B-C1B-C6B	5.25	127.61	118.94

There are no chirality outliers.

There are no torsion outliers.

There are no ring outliers.

1 monomer is involved in 3 short contacts:

Mol	Chain	Res	Type	Clashes	Symm-Clashes
6	1	7001	W11	3	0

5.7 Other polymers ⓘ

There are no such residues in this entry.

5.8 Polymer linkage issues

The following chains have linkage breaks:

Mol	Chain	Number of breaks
1	1	1

All chain breaks are listed below:

Model	Chain	Residue-1	Atom-1	Residue-2	Atom-2	Distance (Å)
1	1	1:ASN	C	2:PRO	N	1.19

6 Fit of model and data ⓘ

6.1 Protein, DNA and RNA chains ⓘ

EDS was not executed - this section is therefore empty.

6.2 Non-standard residues in protein, DNA, RNA chains ⓘ

EDS was not executed - this section is therefore empty.

6.3 Carbohydrates ⓘ

EDS was not executed - this section is therefore empty.

6.4 Ligands ⓘ

EDS was not executed - this section is therefore empty.

6.5 Other polymers ⓘ

EDS was not executed - this section is therefore empty.