



Full wwPDB X-ray Structure Validation Report ⓘ

Sep 17, 2017 – 01:55 PM EDT

PDB ID : 5CC7
Title : Crystal structure of Mycobacterium tuberculosis malate synthase in complex with 1H-indole-6-carboxylic acid
Authors : Huang, H.-L.; Sacchettini, J.C.
Deposited on : unknown
Resolution : 2.12 Å(reported)

This is a Full wwPDB X-ray Structure Validation Report for a publicly released PDB entry.

We welcome your comments at validation@mail.wwpdb.org

A user guide is available at

<http://wwpdb.org/validation/2016/XrayValidationReportHelp>

with specific help available everywhere you see the ⓘ symbol.

The following versions of software and data (see [references ⓘ](#)) were used in the production of this report:

MolProbity : 4.02b-467
Mogul : 1.7.2 (RC1), CSD as538be (2017)
Xtriage (Phenix) : 1.9-1692
EDS : rb-20029824
Percentile statistics : 20161228.v01 (using entries in the PDB archive December 28th 2016)
Refmac : 5.8.0135
CCP4 : 6.5.0
Ideal geometry (proteins) : Engh & Huber (2001)
Ideal geometry (DNA, RNA) : Parkinson et al. (1996)
Validation Pipeline (wwPDB-VP) : rb-20029824

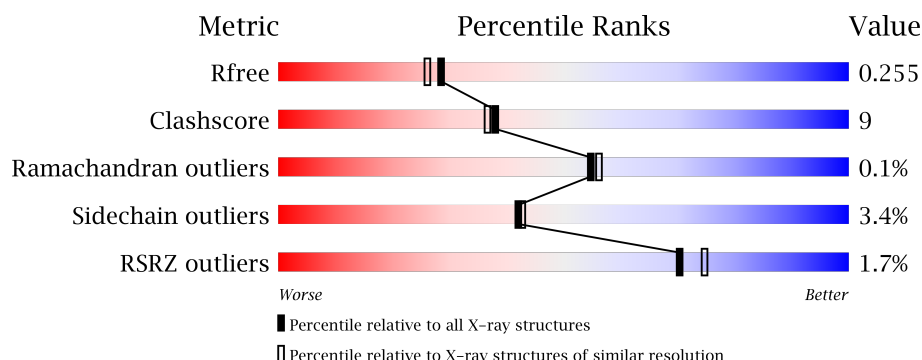
1 Overall quality at a glance

The following experimental techniques were used to determine the structure:

X-RAY DIFFRACTION

The reported resolution of this entry is 2.12 Å.

Percentile scores (ranging between 0-100) for global validation metrics of the entry are shown in the following graphic. The table shows the number of entries on which the scores are based.



Metric	Whole archive (#Entries)	Similar resolution (#Entries, resolution range(Å))
R_{free}	100719	4988 (2.14-2.10)
Clashscore	112137	5557 (2.14-2.10)
Ramachandran outliers	110173	5504 (2.14-2.10)
Sidechain outliers	110143	5505 (2.14-2.10)
RSRZ outliers	101464	5021 (2.14-2.10)

The table below summarises the geometric issues observed across the polymeric chains and their fit to the electron density. The red, orange, yellow and green segments on the lower bar indicate the fraction of residues that contain outliers for ≥ 3 , 2, 1 and 0 types of geometric quality criteria. A grey segment represents the fraction of residues that are not modelled. The numeric value for each fraction is indicated below the corresponding segment, with a dot representing fractions $\leq 5\%$. The upper red bar (where present) indicates the fraction of residues that have poor fit to the electron density. The numeric value is given above the bar.

Mol	Chain	Length	Quality of chain
1	A	741	<div> <div>2%</div> <div>80%</div> <div>13%</div> <div>5%</div> </div>

The following table lists non-polymeric compounds, carbohydrate monomers and non-standard residues in protein, DNA, RNA chains that are outliers for geometric or electron-density-fit criteria:

Mol	Type	Chain	Res	Chirality	Geometry	Clashes	Electron density
2	MG	A	801	-	-	-	X
3	1F1	A	802	-	-	X	-

2 Entry composition [i](#)

There are 4 unique types of molecules in this entry. The entry contains 6132 atoms, of which 0 are hydrogens and 0 are deuteriums.

In the tables below, the ZeroOcc column contains the number of atoms modelled with zero occupancy, the AltConf column contains the number of residues with at least one atom in alternate conformation and the Trace column contains the number of residues modelled with at most 2 atoms.

- Molecule 1 is a protein called Malate synthase G.

Mol	Chain	Residues	Atoms					ZeroOcc	AltConf	Trace
			Total	C	N	O	S			
1	A	704	5393	3384	952	1036	21	0	0	0

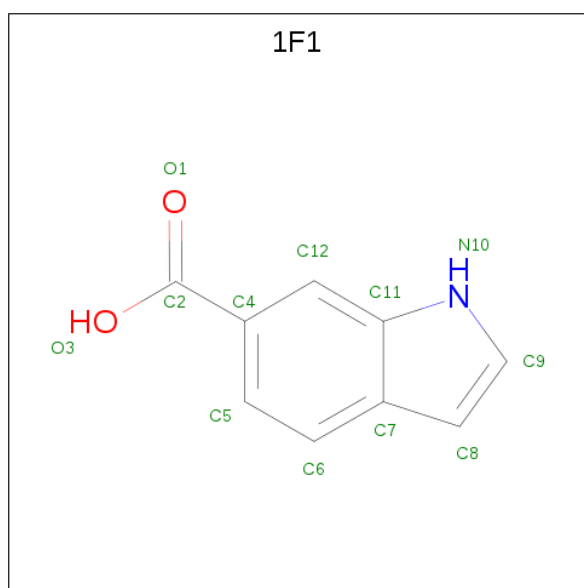
There is a discrepancy between the modelled and reference sequences:

Chain	Residue	Modelled	Actual	Comment	Reference
A	619	ALA	CYS	engineered mutation	UNP P9WK17

- Molecule 2 is MAGNESIUM ION (three-letter code: MG) (formula: Mg).

Mol	Chain	Residues	Atoms		ZeroOcc	AltConf
2	A	1	Total	Mg	0	0
			1	1		

- Molecule 3 is 1H-indole-6-carboxylic acid (three-letter code: 1F1) (formula: C₉H₇NO₂).



Mol	Chain	Residues	Atoms				ZeroOcc	AltConf
3	A	1	Total	C	N	O	0	0
			12	9	1	2		

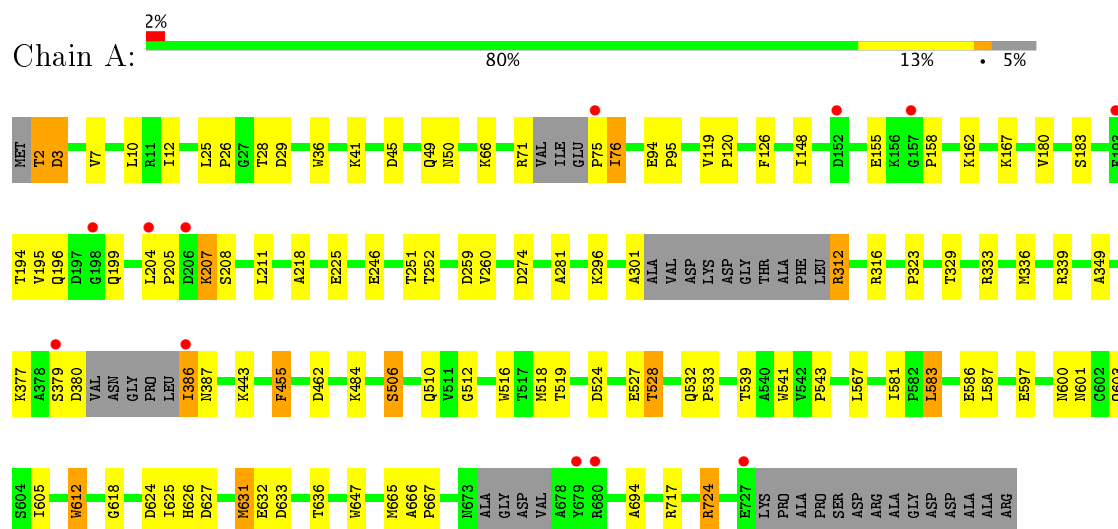
- Molecule 4 is water.

Mol	Chain	Residues	Atoms		ZeroOcc	AltConf
4	A	726	Total	O	0	0
			726	726		

3 Residue-property plots [i](#)

These plots are drawn for all protein, RNA and DNA chains in the entry. The first graphic for a chain summarises the proportions of the various outlier classes displayed in the second graphic. The second graphic shows the sequence view annotated by issues in geometry and electron density. Residues are color-coded according to the number of geometric quality criteria for which they contain at least one outlier: green = 0, yellow = 1, orange = 2 and red = 3 or more. A red dot above a residue indicates a poor fit to the electron density ($RSRZ > 2$). Stretches of 2 or more consecutive residues without any outlier are shown as a green connector. Residues present in the sample, but not in the model, are shown in grey.

• Molecule 1: Malate synthase G



4 Data and refinement statistics

Property	Value	Source
Space group	P 43 21 2	Depositor
Cell constants a, b, c, α , β , γ	79.66 Å 79.66 Å 225.83 Å 90.00° 90.00° 90.00°	Depositor
Resolution (Å)	45.10 – 2.12 45.10 – 2.12	Depositor EDS
% Data completeness (in resolution range)	96.5 (45.10-2.12) 96.5 (45.10-2.12)	Depositor EDS
R_{merge}	(Not available)	Depositor
R_{sym}	(Not available)	Depositor
$\langle I/\sigma(I) \rangle$ ¹	10.67 (at 2.12 Å)	Xtriage
Refinement program	REFMAC CCP4 6.5	Depositor
R, R_{free}	0.189 , 0.252 0.190 , 0.255	Depositor DCC
R_{free} test set	2052 reflections (5.32%)	DCC
Wilson B-factor (Å ²)	26.8	Xtriage
Anisotropy	0.558	Xtriage
Bulk solvent k_{sol} (e/Å ³), B_{sol} (Å ²)	0.33 , 55.4	EDS
L-test for twinning ²	$\langle L \rangle = 0.50$, $\langle L^2 \rangle = 0.33$	Xtriage
Estimated twinning fraction	No twinning to report.	Xtriage
F_o, F_c correlation	0.95	EDS
Total number of atoms	6132	wwPDB-VP
Average B, all atoms (Å ²)	32.0	wwPDB-VP

Xtriage's analysis on translational NCS is as follows: *The largest off-origin peak in the Patterson function is 2.95% of the height of the origin peak. No significant pseudotranslation is detected.*

¹Intensities estimated from amplitudes.

²Theoretical values of $\langle |L| \rangle$, $\langle L^2 \rangle$ for acentric reflections are 0.5, 0.333 respectively for untwinned datasets, and 0.375, 0.2 for perfectly twinned datasets.

5 Model quality [i](#)

5.1 Standard geometry [i](#)

Bond lengths and bond angles in the following residue types are not validated in this section: MG, 1F1

The Z score for a bond length (or angle) is the number of standard deviations the observed value is removed from the expected value. A bond length (or angle) with $|Z| > 5$ is considered an outlier worth inspection. RMSZ is the root-mean-square of all Z scores of the bond lengths (or angles).

Mol	Chain	Bond lengths		Bond angles	
		RMSZ	$\# Z > 5$	RMSZ	$\# Z > 5$
1	A	0.34	0/5493	0.52	0/7464

Chiral center outliers are detected by calculating the chiral volume of a chiral center and verifying if the center is modelled as a planar moiety or with the opposite hand. A planarity outlier is detected by checking planarity of atoms in a peptide group, atoms in a mainchain group or atoms of a sidechain that are expected to be planar.

Mol	Chain	#Chirality outliers	#Planarity outliers
1	A	0	1

There are no bond length outliers.

There are no bond angle outliers.

There are no chirality outliers.

All (1) planarity outliers are listed below:

Mol	Chain	Res	Type	Group
1	A	75	PRO	Peptide

5.2 Too-close contacts [i](#)

In the following table, the Non-H and H(model) columns list the number of non-hydrogen atoms and hydrogen atoms in the chain respectively. The H(added) column lists the number of hydrogen atoms added and optimized by MolProbity. The Clashes column lists the number of clashes within the asymmetric unit, whereas Symm-Clashes lists symmetry related clashes.

Mol	Chain	Non-H	H(model)	H(added)	Clashes	Symm-Clashes
1	A	5393	0	5333	93	0
2	A	1	0	0	0	0

Continued on next page...

Continued from previous page...

Mol	Chain	Non-H	H(model)	H(added)	Clashes	Symm-Clashes
3	A	12	0	6	4	0
4	A	726	0	0	32	1
All	All	6132	0	5339	93	1

The all-atom clashscore is defined as the number of clashes found per 1000 atoms (including hydrogen atoms). The all-atom clashscore for this structure is 9.

All (93) close contacts within the same asymmetric unit are listed below, sorted by their clash magnitude.

Atom-1	Atom-2	Interatomic distance (Å)	Clash overlap (Å)
1:A:484:LYS:HG2	4:A:904:HOH:O	1.63	0.99
1:A:724:ARG:HG2	4:A:1596:HOH:O	1.78	0.83
1:A:49:GLN:HG3	4:A:1375:HOH:O	1.81	0.80
1:A:586:GLU:HG3	1:A:587:LEU:HD13	1.69	0.74
1:A:524:ASP:HB3	4:A:1447:HOH:O	1.88	0.73
1:A:377:LYS:HD2	4:A:1477:HOH:O	1.89	0.72
1:A:76:ILE:HD13	1:A:76:ILE:N	2.06	0.70
1:A:386:ILE:HG12	4:A:1279:HOH:O	1.94	0.68
1:A:2:THR:HB	4:A:907:HOH:O	1.94	0.68
1:A:524:ASP:O	1:A:528:THR:HG23	1.92	0.68
1:A:603:GLN:HB2	1:A:665:MET:HE2	1.75	0.68
1:A:632:GLU:HB3	1:A:636:THR:HG21	1.74	0.67
1:A:600:ASN:ND2	1:A:625:ILE:HG22	2.11	0.66
1:A:519:THR:HG21	1:A:631:MET:HG2	1.78	0.66
1:A:336:MET:H	1:A:387:ASN:HD21	1.43	0.65
1:A:76:ILE:HD13	1:A:76:ILE:H	1.62	0.63
1:A:379:SER:HB3	4:A:957:HOH:O	1.98	0.63
1:A:296:LYS:O	1:A:379:SER:HB2	1.98	0.62
1:A:543:PRO:HB2	4:A:1203:HOH:O	2.00	0.61
1:A:541:TRP:CZ3	3:A:802:1F1:O1	2.55	0.59
1:A:600:ASN:ND2	4:A:905:HOH:O	2.36	0.59
1:A:10:LEU:HD12	4:A:1376:HOH:O	2.03	0.58
1:A:519:THR:CG2	1:A:631:MET:HG2	2.33	0.58
1:A:316:ARG:HG2	4:A:1202:HOH:O	2.03	0.57
1:A:666:ALA:HB3	1:A:667:PRO:HD3	1.87	0.57
1:A:541:TRP:HZ3	3:A:802:1F1:O1	1.88	0.56
1:A:632:GLU:HB3	1:A:636:THR:CG2	2.34	0.56
1:A:281:ALA:HB2	1:A:349:ALA:HA	1.88	0.56
1:A:119:VAL:HG23	1:A:120:PRO:HD2	1.88	0.55
1:A:95:PRO:HG3	4:A:1582:HOH:O	2.06	0.55
1:A:506:SER:HB2	4:A:1212:HOH:O	2.06	0.55

Continued on next page...

Continued from previous page...

Atom-1	Atom-2	Interatomic distance (Å)	Clash overlap (Å)
1:A:455:PHE:CD1	1:A:455:PHE:C	2.80	0.55
1:A:633:ASP:OD2	3:A:802:1F1:O3	2.26	0.54
1:A:625:ILE:HB	4:A:1377:HOH:O	2.06	0.54
1:A:204:LEU:HB3	1:A:205:PRO:HD2	1.91	0.53
1:A:516:TRP:O	1:A:543:PRO:HG3	2.09	0.53
1:A:518:MET:SD	4:A:1358:HOH:O	2.59	0.53
1:A:600:ASN:HD22	1:A:625:ILE:HG22	1.72	0.53
1:A:301:ALA:HB3	1:A:312:ARG:HG2	1.92	0.52
1:A:180:VAL:HG12	1:A:211:LEU:HD22	1.92	0.52
1:A:625:ILE:HG23	1:A:626:HIS:N	2.25	0.52
1:A:196:GLN:HG2	4:A:1403:HOH:O	2.10	0.52
1:A:329:THR:HG21	4:A:1230:HOH:O	2.10	0.52
1:A:333:ARG:NH2	1:A:386:ILE:O	2.44	0.51
1:A:625:ILE:HG23	1:A:626:HIS:H	1.75	0.51
1:A:158:PRO:CB	4:A:941:HOH:O	2.59	0.50
1:A:527:GLU:HB3	4:A:1029:HOH:O	2.10	0.50
1:A:119:VAL:CG2	1:A:120:PRO:HD2	2.43	0.49
1:A:76:ILE:CD1	1:A:76:ILE:N	2.75	0.48
1:A:119:VAL:CG2	1:A:126:PHE:HB3	2.43	0.47
1:A:632:GLU:CB	1:A:636:THR:HG21	2.41	0.47
1:A:148:ILE:CG2	1:A:167:LYS:HE3	2.44	0.47
1:A:162:LYS:HD2	4:A:919:HOH:O	2.14	0.47
1:A:379:SER:O	1:A:380:ASP:C	2.53	0.47
1:A:12:ILE:HD13	1:A:36:TRP:CZ3	2.49	0.47
1:A:94:GLU:HG3	1:A:443:LYS:HD3	1.97	0.46
1:A:601:ASN:O	1:A:605:ILE:HG13	2.16	0.46
1:A:155:GLU:CD	1:A:155:GLU:H	2.19	0.45
1:A:225:GLU:HG3	4:A:1170:HOH:O	2.15	0.45
1:A:632:GLU:CG	1:A:636:THR:HG21	2.46	0.45
1:A:694:ALA:HB2	1:A:717:ARG:HG3	1.98	0.45
1:A:194:THR:HG22	1:A:195:VAL:N	2.32	0.45
1:A:484:LYS:HD3	4:A:944:HOH:O	2.17	0.45
1:A:512:GLY:HA2	1:A:539:THR:O	2.17	0.45
1:A:41:LYS:HE3	1:A:45:ASP:OD2	2.16	0.45
1:A:339:ARG:HH22	3:A:802:1F1:C2	2.30	0.44
1:A:532:GLN:HB2	1:A:533:PRO:HD3	2.00	0.44
1:A:207:LYS:HG2	1:A:208:SER:N	2.33	0.43
1:A:455:PHE:HD1	1:A:455:PHE:C	2.20	0.43
1:A:259:ASP:OD1	1:A:260:VAL:N	2.51	0.43
1:A:600:ASN:HD22	1:A:625:ILE:CG2	2.30	0.43
1:A:518:MET:CG	4:A:1358:HOH:O	2.67	0.43

Continued on next page...

Continued from previous page...

Atom-1	Atom-2	Interatomic distance (Å)	Clash overlap (Å)
1:A:597:GLU:HG2	1:A:647:TRP:CH2	2.54	0.43
1:A:3:ASP:N	4:A:907:HOH:O	2.41	0.42
1:A:380:ASP:HB2	4:A:1523:HOH:O	2.18	0.42
1:A:274:ASP:O	1:A:633:ASP:HB2	2.19	0.42
1:A:386:ILE:N	4:A:932:HOH:O	2.52	0.41
1:A:567:LEU:HA	1:A:567:LEU:HD23	1.90	0.41
1:A:455:PHE:CB	1:A:510:GLN:HB2	2.49	0.41
1:A:586:GLU:HB2	4:A:1534:HOH:O	2.19	0.41
1:A:624:ASP:HB2	4:A:905:HOH:O	2.19	0.41
1:A:7:VAL:HG11	1:A:36:TRP:HB3	2.02	0.41
1:A:28:THR:O	1:A:29:ASP:HB2	2.20	0.41
1:A:612:TRP:CD1	1:A:618:GLY:HA2	2.56	0.41
1:A:148:ILE:HG23	1:A:167:LYS:HE3	2.03	0.41
1:A:252:THR:HA	4:A:1214:HOH:O	2.20	0.41
1:A:218:ALA:O	1:A:323:PRO:HD3	2.21	0.41
1:A:581:ILE:CG2	1:A:583:LEU:HD22	2.51	0.41
1:A:631:MET:HE2	1:A:631:MET:HB3	1.61	0.40
1:A:25:LEU:N	1:A:26:PRO:CD	2.85	0.40
1:A:251:THR:HG22	4:A:1214:HOH:O	2.20	0.40
1:A:631:MET:O	1:A:632:GLU:HB2	2.22	0.40
1:A:66:LYS:HE2	4:A:1385:HOH:O	2.21	0.40

All (1) symmetry-related close contacts are listed below. The label for Atom-2 includes the symmetry operator and encoded unit-cell translations to be applied.

Atom-1	Atom-2	Interatomic distance (Å)	Clash overlap (Å)
4:A:972:HOH:O	4:A:1357:HOH:O[8_675]	2.06	0.14

5.3 Torsion angles ⓘ

5.3.1 Protein backbone ⓘ

In the following table, the Percentiles column shows the percent Ramachandran outliers of the chain as a percentile score with respect to all X-ray entries followed by that with respect to entries of similar resolution.

The Analysed column shows the number of residues for which the backbone conformation was analysed, and the total number of residues.

Mol	Chain	Analysed	Favoured	Allowed	Outliers	Percentiles
1	A	694/741 (94%)	674 (97%)	19 (3%)	1 (0%)	55 56

All (1) Ramachandran outliers are listed below:

Mol	Chain	Res	Type
1	A	631	MET

5.3.2 Protein sidechains ⓘ

In the following table, the Percentiles column shows the percent sidechain outliers of the chain as a percentile score with respect to all X-ray entries followed by that with respect to entries of similar resolution.

The Analysed column shows the number of residues for which the sidechain conformation was analysed, and the total number of residues.

Mol	Chain	Analysed	Rotameric	Outliers	Percentiles
1	A	567/593 (96%)	548 (97%)	19 (3%)	42 43

All (19) residues with a non-rotameric sidechain are listed below:

Mol	Chain	Res	Type
1	A	2	THR
1	A	3	ASP
1	A	50	ASN
1	A	71	ARG
1	A	76	ILE
1	A	183	SER
1	A	199	GLN
1	A	207	LYS
1	A	246	GLU
1	A	312	ARG
1	A	386	ILE
1	A	455	PHE
1	A	462	ASP
1	A	506	SER
1	A	528	THR
1	A	583	LEU
1	A	612	TRP
1	A	627	ASP
1	A	724	ARG

Some sidechains can be flipped to improve hydrogen bonding and reduce clashes. All (9) such sidechains are listed below:

Mol	Chain	Res	Type
1	A	9	ASN
1	A	50	ASN
1	A	129	ASN
1	A	340	ASN
1	A	387	ASN
1	A	425	ASN
1	A	600	ASN
1	A	673	ASN
1	A	707	ASN

5.3.3 RNA [i](#)

There are no RNA molecules in this entry.

5.4 Non-standard residues in protein, DNA, RNA chains [i](#)

There are no non-standard protein/DNA/RNA residues in this entry.

5.5 Carbohydrates [i](#)

There are no carbohydrates in this entry.

5.6 Ligand geometry [i](#)

Of 2 ligands modelled in this entry, 1 is monoatomic - leaving 1 for Mogul analysis.

In the following table, the Counts columns list the number of bonds (or angles) for which Mogul statistics could be retrieved, the number of bonds (or angles) that are observed in the model and the number of bonds (or angles) that are defined in the chemical component dictionary. The Link column lists molecule types, if any, to which the group is linked. The Z score for a bond length (or angle) is the number of standard deviations the observed value is removed from the expected value. A bond length (or angle) with $|Z| > 2$ is considered an outlier worth inspection. RMSZ is the root-mean-square of all Z scores of the bond lengths (or angles).

Mol	Type	Chain	Res	Link	Bond lengths			Bond angles		
					Counts	RMSZ	$\# Z > 2$	Counts	RMSZ	$\# Z > 2$
3	1F1	A	802	-	8,13,13	0.87	0	10,18,18	0.66	0

In the following table, the Chirals column lists the number of chiral outliers, the number of chiral

centers analysed, the number of these observed in the model and the number defined in the chemical component dictionary. Similar counts are reported in the Torsion and Rings columns. '-' means no outliers of that kind were identified.

Mol	Type	Chain	Res	Link	Chirals	Torsions	Rings
3	1F1	A	802	-	-	0/0/4/4	0/2/2/2

There are no bond length outliers.

There are no bond angle outliers.

There are no chirality outliers.

There are no torsion outliers.

There are no ring outliers.

1 monomer is involved in 4 short contacts:

Mol	Chain	Res	Type	Clashes	Symm-Clashes
3	A	802	1F1	4	0

5.7 Other polymers [i](#)

There are no such residues in this entry.

5.8 Polymer linkage issues [i](#)

There are no chain breaks in this entry.

6 Fit of model and data [i](#)

6.1 Protein, DNA and RNA chains [i](#)

In the following table, the column labelled ‘#RSRZ> 2’ contains the number (and percentage) of RSRZ outliers, followed by percent RSRZ outliers for the chain as percentile scores relative to all X-ray entries and entries of similar resolution. The OWAB column contains the minimum, median, 95th percentile and maximum values of the occupancy-weighted average B-factor per residue. The column labelled ‘Q< 0.9’ lists the number of (and percentage) of residues with an average occupancy less than 0.9.

Mol	Chain	Analysed	<RSRZ>	#RSRZ>2	OWAB(Å ²)	Q<0.9
1	A	704/741 (95%)	-0.23	12 (1%) 70 75	19, 28, 50, 68	0

All (12) RSRZ outliers are listed below:

Mol	Chain	Res	Type	RSRZ
1	A	75	PRO	4.2
1	A	680	ARG	3.3
1	A	198	GLY	2.8
1	A	152	ASP	2.5
1	A	679	TYR	2.4
1	A	379	SER	2.4
1	A	386	ILE	2.4
1	A	727	GLU	2.2
1	A	206	ASP	2.2
1	A	157	GLY	2.2
1	A	204	LEU	2.0
1	A	193	PHE	2.0

6.2 Non-standard residues in protein, DNA, RNA chains [i](#)

There are no non-standard protein/DNA/RNA residues in this entry.

6.3 Carbohydrates [i](#)

There are no carbohydrates in this entry.

6.4 Ligands [i](#)

In the following table, the Atoms column lists the number of modelled atoms in the group and the number defined in the chemical component dictionary. LLDF column lists the quality of electron

density of the group with respect to its neighbouring residues in protein, DNA or RNA chains. The B-factors column lists the minimum, median, 95th percentile and maximum values of B factors of atoms in the group. The column labelled 'Q< 0.9' lists the number of atoms with occupancy less than 0.9.

Mol	Type	Chain	Res	Atoms	RSCC	RSR	LLDF	B-factors(Å ²)	Q<0.9
2	MG	A	801	1/1	0.97	0.23	6.16	27,27,27,27	0
3	1F1	A	802	12/12	0.83	0.20	1.83	32,38,41,45	0

6.5 Other polymers

There are no such residues in this entry.