



Full wwPDB X-ray Structure Validation Report ⓘ

Feb 13, 2017 – 08:02 pm GMT

PDB ID : 2CFW
Title : AGAO IN COMPLEX WITH WC7A (RU-WIRE INHIBITOR, 7-CARBON LINKER, DATA SET A)
Authors : Langley, D.B.; Duff, A.P.; Freeman, H.C.; Guss, J.M.; Juda, G.A.; Dooley, D.M.; Contakes, S.M.; Halpern-Manners, N.W.; Dunn, A.R.; Gray, H.B.
Deposited on : 2006-02-24
Resolution : 1.74 Å(reported)

This is a Full wwPDB X-ray Structure Validation Report for a publicly released PDB entry.

We welcome your comments at validation@mail.wwpdb.org

A user guide is available at

<http://wwpdb.org/validation/2016/XrayValidationReportHelp>

with specific help available everywhere you see the ⓘ symbol.

The following versions of software and data (see [references ⓘ](#)) were used in the production of this report:

MolProbity	:	4.02b-467
Mogul	:	1.7.2 (RC1), CSD as538be (2017)
Xtriage (Phenix)	:	1.9-1692
EDS	:	trunk28620
Percentile statistics	:	20161228.v01 (using entries in the PDB archive December 28th 2016)
Refmac	:	5.8.0135
CCP4	:	6.5.0
Ideal geometry (proteins)	:	Engh & Huber (2001)
Ideal geometry (DNA, RNA)	:	Parkinson et al. (1996)
Validation Pipeline (wwPDB-VP)	:	recalc28949

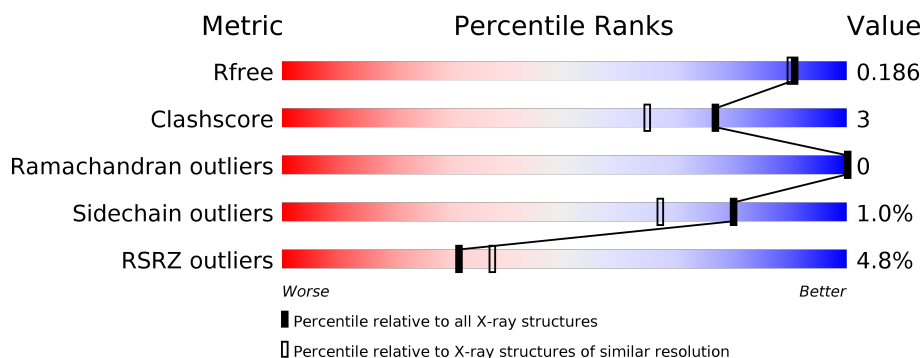
1 Overall quality at a glance

The following experimental techniques were used to determine the structure:

X-RAY DIFFRACTION

The reported resolution of this entry is 1.74 Å.

Percentile scores (ranging between 0-100) for global validation metrics of the entry are shown in the following graphic. The table shows the number of entries on which the scores are based.



Metric	Whole archive (#Entries)	Similar resolution (#Entries, resolution range(Å))
R_{free}	100719	2694 (1.76-1.72)
Clashscore	112137	2854 (1.76-1.72)
Ramachandran outliers	110173	2824 (1.76-1.72)
Sidechain outliers	110143	2824 (1.76-1.72)
RSRZ outliers	101464	2705 (1.76-1.72)

The table below summarises the geometric issues observed across the polymeric chains and their fit to the electron density. The red, orange, yellow and green segments on the lower bar indicate the fraction of residues that contain outliers for ≥ 3 , 2, 1 and 0 types of geometric quality criteria. A grey segment represents the fraction of residues that are not modelled. The numeric value for each fraction is indicated below the corresponding segment, with a dot representing fractions $\leq 5\%$. The upper red bar (where present) indicates the fraction of residues that have poor fit to the electron density. The numeric value is given above the bar.

Mol	Chain	Length	Quality of chain
1	A	646	<div> <div>5%</div> <div> <div></div> <div>90%</div> <div>5%</div> <div></div> </div> </div>

The following table lists non-polymeric compounds, carbohydrate monomers and non-standard residues in protein, DNA, RNA chains that are outliers for geometric or electron-density-fit criteria:

Mol	Type	Chain	Res	Chirality	Geometry	Clashes	Electron density
4	R7U	A	705	X	-	-	X
6	GOL	A	720	-	-	-	X

Continued on next page...

Continued from previous page...

Mol	Type	Chain	Res	Chirality	Geometry	Clashes	Electron density
6	GOL	A	721	-	-	-	X
6	GOL	A	722	-	-	-	X
6	GOL	A	723	-	-	-	X
6	GOL	A	724	-	-	-	X
6	GOL	A	725	-	-	-	X
6	GOL	A	726	-	-	-	X

2 Entry composition

There are 7 unique types of molecules in this entry. The entry contains 9973 atoms, of which 4586 are hydrogens and 0 are deuteriums.

In the tables below, the ZeroOcc column contains the number of atoms modelled with zero occupancy, the AltConf column contains the number of residues with at least one atom in alternate conformation and the Trace column contains the number of residues modelled with at most 2 atoms.

- Molecule 1 is a protein called PHENYLETHYLAMINE OXIDASE.

Mol	Chain	Residues	Atoms						ZeroOcc	AltConf	Trace
1	A	620	Total	C	H	N	O	S	0	9	0
			9411	3105	4504	856	934	12			

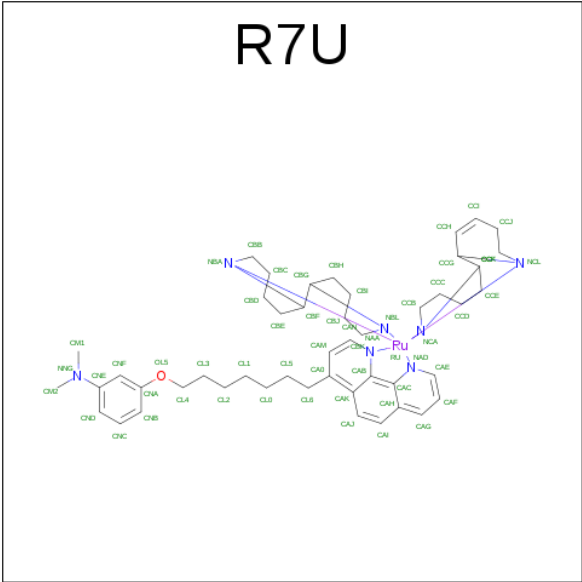
- Molecule 2 is COPPER (II) ION (three-letter code: CU) (formula: Cu).

Mol	Chain	Residues	Atoms		ZeroOcc	AltConf
2	A	1	Total	Cu	0	0
			1	1		

- Molecule 3 is SODIUM ION (three-letter code: NA) (formula: Na).

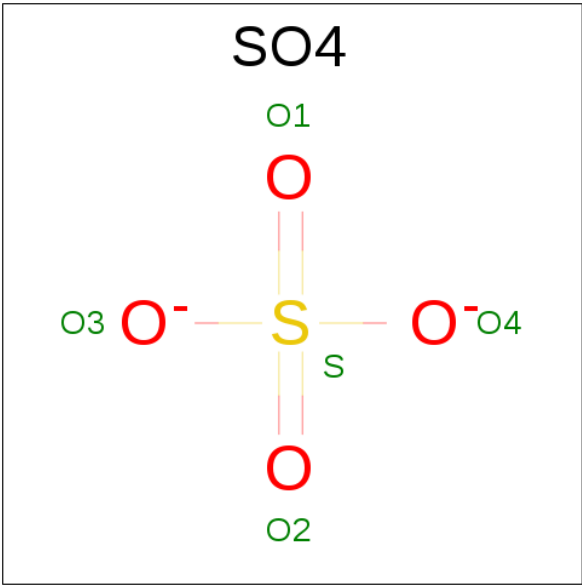
Mol	Chain	Residues	Atoms		ZeroOcc	AltConf
3	A	1	Total	Na	0	0
			1	1		

- Molecule 4 is RUTHENIUM WIRE, 7 CARBON LINKER (three-letter code: R7U) (formula: C₄₇H₆₅N₇ORu).



Mol	Chain	Residues	Atoms					ZeroOcc	AltConf
			Total	C	H	N	O		
4	A	1	103	47	47	7	1	0	0

- Molecule 5 is SULFATE ION (three-letter code: SO4) (formula: O₄S).



Mol	Chain	Residues	Atoms		ZeroOcc	AltConf
			Total	O		
5	A	1	5	4	0	0

- Molecule 6 is GLYCEROL (three-letter code: GOL) (formula: C₃H₈O₃).



Mol	Chain	Residues	Atoms				ZeroOcc	AltConf
6	A	1	Total	C	H	O	0	0
			11	3	5	3		
6	A	1	Total	C	H	O	0	0
			11	3	5	3		
6	A	1	Total	C	H	O	0	0
			11	3	5	3		
6	A	1	Total	C	H	O	0	0
			11	3	5	3		
6	A	1	Total	C	H	O	0	0
			11	3	5	3		
6	A	1	Total	C	H	O	0	0
			11	3	5	3		

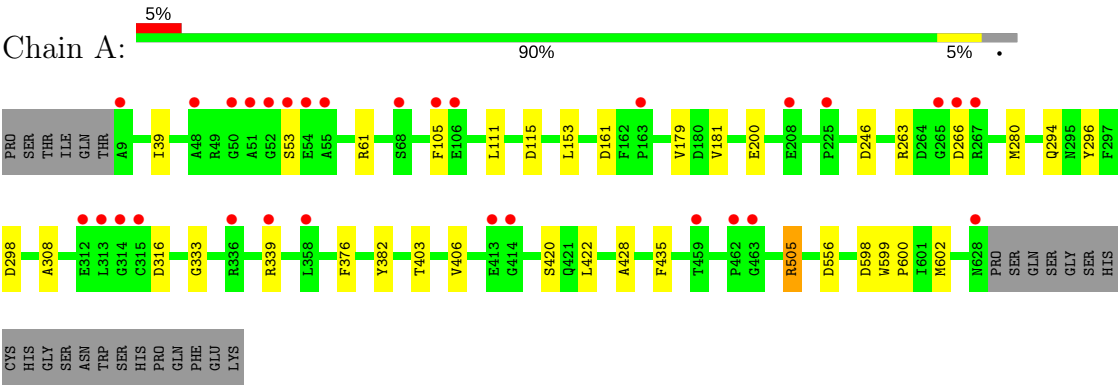
- Molecule 7 is water.

Mol	Chain	Residues	Atoms		ZeroOcc	AltConf
7	A	375	Total	O	0	0
			375	375		

3 Residue-property plots i

These plots are drawn for all protein, RNA and DNA chains in the entry. The first graphic for a chain summarises the proportions of the various outlier classes displayed in the second graphic. The second graphic shows the sequence view annotated by issues in geometry and electron density. Residues are color-coded according to the number of geometric quality criteria for which they contain at least one outlier: green = 0, yellow = 1, orange = 2 and red = 3 or more. A red dot above a residue indicates a poor fit to the electron density ($RSRZ > 2$). Stretches of 2 or more consecutive residues without any outlier are shown as a green connector. Residues present in the sample, but not in the model, are shown in grey.

- Molecule 1: PHENYLETHYLAMINE OXIDASE



4 Data and refinement statistics

Property	Value	Source
Space group	C 1 2 1	Depositor
Cell constants a, b, c, α , β , γ	158.05Å 62.74Å 92.06Å 90.00° 112.10° 90.00°	Depositor
Resolution (Å)	25.85 – 1.74 25.72 – 1.74	Depositor EDS
% Data completeness (in resolution range)	92.9 (25.85-1.74) 92.9 (25.72-1.74)	Depositor EDS
R_{merge}	0.04	Depositor
R_{sym}	(Not available)	Depositor
$\langle I/\sigma(I) \rangle$ ¹	2.16 (at 1.74Å)	Xtriage
Refinement program	REFMAC 5.1.24	Depositor
R, R_{free}	0.161 , 0.176 0.175 , 0.186	Depositor DCC
R_{free} test set	3966 reflections (5.22%)	DCC
Wilson B-factor (Å ²)	22.4	Xtriage
Anisotropy	0.489	Xtriage
Bulk solvent k_{sol} (e/Å ³), B_{sol} (Å ²)	0.45 , 45.8	EDS
L-test for twinning ²	$\langle L \rangle = 0.49$, $\langle L^2 \rangle = 0.33$	Xtriage
Estimated twinning fraction	No twinning to report.	Xtriage
F_o, F_c correlation	0.97	EDS
Total number of atoms	9973	wwPDB-VP
Average B, all atoms (Å ²)	22.0	wwPDB-VP

Xtriage's analysis on translational NCS is as follows: *The largest off-origin peak in the Patterson function is 4.99% of the height of the origin peak. No significant pseudotranslation is detected.*

¹Intensities estimated from amplitudes.

²Theoretical values of $\langle |L| \rangle$, $\langle L^2 \rangle$ for acentric reflections are 0.5, 0.333 respectively for untwinned datasets, and 0.375, 0.2 for perfectly twinned datasets.

5 Model quality

5.1 Standard geometry

Bond lengths and bond angles in the following residue types are not validated in this section: GOL, NA, SO4, TPQ, CU, R7U

The Z score for a bond length (or angle) is the number of standard deviations the observed value is removed from the expected value. A bond length (or angle) with $|Z| > 5$ is considered an outlier worth inspection. RMSZ is the root-mean-square of all Z scores of the bond lengths (or angles).

Mol	Chain	Bond lengths		Bond angles	
		RMSZ	$\# Z > 5$	RMSZ	$\# Z > 5$
1	A	0.50	0/5059	0.81	8/6888 (0.1%)

Chiral center outliers are detected by calculating the chiral volume of a chiral center and verifying if the center is modelled as a planar moiety or with the opposite hand. A planarity outlier is detected by checking planarity of atoms in a peptide group, atoms in a mainchain group or atoms of a sidechain that are expected to be planar.

Mol	Chain	#Chirality outliers	#Planarity outliers
1	A	0	1

There are no bond length outliers.

All (8) bond angle outliers are listed below:

Mol	Chain	Res	Type	Atoms	Z	Observed(°)	Ideal(°)
1	A	505	ARG	NE-CZ-NH1	6.92	123.76	120.30
1	A	505	ARG	NE-CZ-NH2	-6.72	116.94	120.30
1	A	298	ASP	CB-CG-OD2	6.63	124.27	118.30
1	A	115	ASP	CB-CG-OD2	5.73	123.45	118.30
1	A	266	ASP	CB-CG-OD2	5.58	123.32	118.30
1	A	161	ASP	CB-CG-OD2	5.42	123.18	118.30
1	A	316	ASP	CB-CG-OD2	5.17	122.96	118.30
1	A	246	ASP	CB-CG-OD2	5.06	122.85	118.30

There are no chirality outliers.

All (1) planarity outliers are listed below:

Mol	Chain	Res	Type	Group
1	A	382	TPQ	Mainchain

5.2 Too-close contacts ⓘ

In the following table, the Non-H and H(model) columns list the number of non-hydrogen atoms and hydrogen atoms in the chain respectively. The H(added) column lists the number of hydrogen atoms added and optimized by MolProbity. The Clashes column lists the number of clashes within the asymmetric unit, whereas Symm-Clashes lists symmetry related clashes.

Mol	Chain	Non-H	H(model)	H(added)	Clashes	Symm-Clashes
1	A	4907	4504	4723	31	1
2	A	1	0	0	0	0
3	A	1	0	0	0	0
4	A	56	47	52	12	0
5	A	5	0	0	0	0
6	A	42	35	56	2	0
7	A	375	0	0	6	0
All	All	5387	4586	4831	33	1

The all-atom clashscore is defined as the number of clashes found per 1000 atoms (including hydrogen atoms). The all-atom clashscore for this structure is 3.

All (33) close contacts within the same asymmetric unit are listed below, sorted by their clash magnitude.

Atom-1	Atom-2	Interatomic distance (Å)	Clash overlap (Å)
1:A:602[A]:MET:SD	7:A:2216:HOH:O	2.04	1.14
1:A:105[B]:PHE:CD1	4:A:705:R7U:HL22	1.85	1.11
1:A:602[C]:MET:HE3	7:A:2216:HOH:O	1.61	0.97
1:A:105[B]:PHE:CG	4:A:705:R7U:HL22	2.08	0.88
1:A:602[C]:MET:CE	7:A:2216:HOH:O	2.23	0.84
1:A:105[A]:PHE:CZ	4:A:705:R7U:CL2	2.64	0.79
1:A:105[A]:PHE:HE2	4:A:705:R7U:CL2	1.39	0.71
1:A:105[A]:PHE:HE2	4:A:705:R7U:HL52	1.53	0.70
6:A:726:GOL:H32	7:A:2375:HOH:O	1.92	0.70
1:A:105[B]:PHE:CE1	4:A:705:R7U:HL22	2.30	0.67
1:A:294[A]:GLN:HG3	1:A:296:TYR:CZ	2.31	0.65
1:A:602[C]:MET:HE1	7:A:2234:HOH:O	1.99	0.62
1:A:599:TRP:CD2	1:A:600:PRO:HA	2.36	0.60
1:A:105[B]:PHE:CG	4:A:705:R7U:CL5	2.84	0.60
1:A:406:VAL:HG12	1:A:602[C]:MET:SD	2.44	0.57
6:A:724:GOL:O3	7:A:2370:HOH:O	2.15	0.57
1:A:406:VAL:CG1	1:A:602[C]:MET:SD	2.94	0.55
1:A:105[A]:PHE:CE2	4:A:705:R7U:HL52	2.20	0.52
1:A:422:LEU:HD11	1:A:428:ALA:HB2	1.92	0.51
1:A:280[B]:MET:HG3	1:A:435:PHE:CE2	2.46	0.51

Continued on next page...

Continued from previous page...

Atom-1	Atom-2	Interatomic distance (Å)	Clash overlap (Å)
1:A:105[B]:PHE:CG	4:A:705:R7U:CL0	2.93	0.50
1:A:308:ALA:O	4:A:705:R7U:HCD	2.13	0.49
1:A:61:ARG:HH22	1:A:556:ASP:CG	2.16	0.49
1:A:280[B]:MET:HG3	1:A:435:PHE:CD2	2.49	0.47
1:A:598:ASP:HB3	1:A:602[C]:MET:HG2	1.96	0.47
1:A:294[A]:GLN:HG3	1:A:296:TYR:OH	2.15	0.47
1:A:403:THR:HA	1:A:602[B]:MET:CG	2.45	0.46
1:A:153:LEU:HD12	1:A:181:VAL:HG11	1.97	0.46
1:A:406:VAL:HG13	1:A:602[C]:MET:SD	2.58	0.43
1:A:105[B]:PHE:CB	4:A:705:R7U:CL0	2.96	0.42
1:A:39[B]:ILE:HD12	1:A:333:GLY:HA2	2.02	0.41
1:A:111:LEU:HD12	1:A:179:VAL:HG11	2.03	0.41
1:A:105[A]:PHE:CZ	4:A:705:R7U:HL71	2.55	0.40

All (1) symmetry-related close contacts are listed below. The label for Atom-2 includes the symmetry operator and encoded unit-cell translations to be applied.

Atom-1	Atom-2	Interatomic distance (Å)	Clash overlap (Å)
1:A:200:GLU:OE1	1:A:505:ARG:HH22[2_556]	1.58	0.02

5.3 Torsion angles [i](#)

5.3.1 Protein backbone [i](#)

In the following table, the Percentiles column shows the percent Ramachandran outliers of the chain as a percentile score with respect to all X-ray entries followed by that with respect to entries of similar resolution.

The Analysed column shows the number of residues for which the backbone conformation was analysed, and the total number of residues.

Mol	Chain	Analysed	Favoured	Allowed	Outliers	Percentiles
1	A	627/646 (97%)	608 (97%)	19 (3%)	0	100 100

There are no Ramachandran outliers to report.

5.3.2 Protein sidechains [i](#)

In the following table, the Percentiles column shows the percent sidechain outliers of the chain as a percentile score with respect to all X-ray entries followed by that with respect to entries of similar

resolution.

The Analysed column shows the number of residues for which the sidechain conformation was analysed, and the total number of residues.

Mol	Chain	Analysed	Rotameric	Outliers	Percentiles	
1	A	523/537 (97%)	518 (99%)	5 (1%)	80	67

All (5) residues with a non-rotameric sidechain are listed below:

Mol	Chain	Res	Type
1	A	53	SER
1	A	263	ARG
1	A	339	ARG
1	A	376	PHE
1	A	420	SER

Some sidechains can be flipped to improve hydrogen bonding and reduce clashes. There are no such sidechains identified.

5.3.3 RNA ⓘ

There are no RNA molecules in this entry.

5.4 Non-standard residues in protein, DNA, RNA chains ⓘ

1 non-standard protein/DNA/RNA residue is modelled in this entry.

In the following table, the Counts columns list the number of bonds (or angles) for which Mogul statistics could be retrieved, the number of bonds (or angles) that are observed in the model and the number of bonds (or angles) that are defined in the chemical component dictionary. The Link column lists molecule types, if any, to which the group is linked. The Z score for a bond length (or angle) is the number of standard deviations the observed value is removed from the expected value. A bond length (or angle) with $|Z| > 2$ is considered an outlier worth inspection. RMSZ is the root-mean-square of all Z scores of the bond lengths (or angles).

Mol	Type	Chain	Res	Link	Bond lengths			Bond angles		
					Counts	RMSZ	$\# Z > 2$	Counts	RMSZ	$\# Z > 2$
1	TPQ	A	382	1	14,14,15	1.57	3 (21%)	17,19,21	1.44	3 (17%)

In the following table, the Chirals column lists the number of chiral outliers, the number of chiral centers analysed, the number of these observed in the model and the number defined in the chemical component dictionary. Similar counts are reported in the Torsion and Rings columns. '-' means no outliers of that kind were identified.

Mol	Type	Chain	Res	Link	Chirals	Torsions	Rings
1	TPQ	A	382	1	-	0/4/22/24	0/1/1/1

All (3) bond length outliers are listed below:

Mol	Chain	Res	Type	Atoms	Z	Observed(Å)	Ideal(Å)
1	A	382	TPQ	O4-C4	-2.92	1.26	1.33
1	A	382	TPQ	CA-C	2.34	1.53	1.50
1	A	382	TPQ	C3-C4	2.92	1.40	1.35

All (3) bond angle outliers are listed below:

Mol	Chain	Res	Type	Atoms	Z	Observed(°)	Ideal(°)
1	A	382	TPQ	CB-C1-C6	-2.44	117.71	122.41
1	A	382	TPQ	O5-C5-C4	2.20	123.08	119.32
1	A	382	TPQ	C6-C1-C2	3.29	121.19	118.54

There are no chirality outliers.

There are no torsion outliers.

There are no ring outliers.

No monomer is involved in short contacts.

5.5 Carbohydrates [i](#)

There are no carbohydrates in this entry.

5.6 Ligand geometry [i](#)

Of 11 ligands modelled in this entry, 2 are monoatomic - leaving 9 for Mogul analysis.

In the following table, the Counts columns list the number of bonds (or angles) for which Mogul statistics could be retrieved, the number of bonds (or angles) that are observed in the model and the number of bonds (or angles) that are defined in the chemical component dictionary. The Link column lists molecule types, if any, to which the group is linked. The Z score for a bond length (or angle) is the number of standard deviations the observed value is removed from the expected value. A bond length (or angle) with $|Z| > 2$ is considered an outlier worth inspection. RMSZ is the root-mean-square of all Z scores of the bond lengths (or angles).

Mol	Type	Chain	Res	Link	Bond lengths			Bond angles		
					Counts	RMSZ	$\# Z > 2$	Counts	RMSZ	$\# Z > 2$
4	R7U	A	705	1	59,66,66	3.99	23 (38%)	61,104,104	2.39	18 (29%)
5	SO4	A	710	-	4,4,4	0.13	0	6,6,6	0.40	0

Mol	Type	Chain	Res	Link	Bond lengths			Bond angles		
					Counts	RMSZ	# Z > 2	Counts	RMSZ	# Z > 2
6	GOL	A	720	-	5,5,5	0.31	0	5,5,5	0.15	0
6	GOL	A	721	-	5,5,5	0.34	0	5,5,5	0.32	0
6	GOL	A	722	-	5,5,5	0.28	0	5,5,5	0.38	0
6	GOL	A	723	-	5,5,5	0.32	0	5,5,5	0.16	0
6	GOL	A	724	-	5,5,5	0.32	0	5,5,5	0.13	0
6	GOL	A	725	-	5,5,5	0.37	0	5,5,5	0.17	0
6	GOL	A	726	-	5,5,5	0.21	0	5,5,5	0.60	0

In the following table, the Chirals column lists the number of chiral outliers, the number of chiral centers analysed, the number of these observed in the model and the number defined in the chemical component dictionary. Similar counts are reported in the Torsion and Rings columns. '-' means no outliers of that kind were identified.

Mol	Type	Chain	Res	Link	Chirals	Torsions	Rings
4	R7U	A	705	1	4/4/12/12	0/15/127/127	0/11/11/11
5	SO4	A	710	-	-	0/0/0/0	0/0/0/0
6	GOL	A	720	-	-	0/4/4/4	0/0/0/0
6	GOL	A	721	-	-	0/4/4/4	0/0/0/0
6	GOL	A	722	-	-	0/4/4/4	0/0/0/0
6	GOL	A	723	-	-	0/4/4/4	0/0/0/0
6	GOL	A	724	-	-	0/4/4/4	0/0/0/0
6	GOL	A	725	-	-	0/4/4/4	0/0/0/0
6	GOL	A	726	-	-	0/4/4/4	0/0/0/0

All (23) bond length outliers are listed below:

Mol	Chain	Res	Type	Atoms	Z	Observed(Å)	Ideal(Å)
4	A	705	R7U	CCB-NCA	-14.00	1.28	1.48
4	A	705	R7U	CBK-NBL	-13.93	1.28	1.48
4	A	705	R7U	CCK-NCL	-9.88	1.34	1.48
4	A	705	R7U	CBB-NBA	-9.52	1.34	1.48
4	A	705	R7U	CCD-CCE	-7.65	1.33	1.53
4	A	705	R7U	CBI-CBH	-7.60	1.33	1.53
4	A	705	R7U	CBE-CBF	-6.16	1.39	1.53
4	A	705	R7U	CBD-CBE	-5.03	1.39	1.53
4	A	705	R7U	CCB-CCC	-4.70	1.34	1.51
4	A	705	R7U	CBK-CBJ	-4.62	1.34	1.51
4	A	705	R7U	CCK-CCJ	-4.21	1.39	1.51
4	A	705	R7U	CBB-CBC	-3.04	1.40	1.51
4	A	705	R7U	CCG-CCF	-2.94	1.50	1.54
4	A	705	R7U	CBC-CBD	-2.79	1.40	1.51
4	A	705	R7U	CCJ-CCI	-2.57	1.39	1.48

Continued on next page...

Continued from previous page...

Mol	Chain	Res	Type	Atoms	Z	Observed(Å)	Ideal(Å)
4	A	705	R7U	CCE-CCF	-2.28	1.48	1.53
4	A	705	R7U	CBH-CBG	-2.04	1.48	1.53
4	A	705	R7U	CAM-CA0	2.03	1.41	1.37
4	A	705	R7U	CAI-CAJ	2.37	1.41	1.35
4	A	705	R7U	CCH-CCI	2.68	1.39	1.32
4	A	705	R7U	CA0-CAK	2.71	1.48	1.42
4	A	705	R7U	CAK-CAB	2.97	1.46	1.41
4	A	705	R7U	CAH-CAC	3.43	1.47	1.41

All (18) bond angle outliers are listed below:

Mol	Chain	Res	Type	Atoms	Z	Observed(°)	Ideal(°)
4	A	705	R7U	CCJ-CK-NCL	2.02	118.91	111.94
4	A	705	R7U	CAE-CAF-CAG	2.14	122.46	119.39
4	A	705	R7U	CAJ-CAK-CA0	2.77	127.12	122.60
4	A	705	R7U	CBJ-CBI-CBH	2.77	117.15	111.42
4	A	705	R7U	CBG-CBF-NBA	2.94	113.46	109.07
4	A	705	R7U	CCC-CCD-CCE	2.99	117.59	111.42
4	A	705	R7U	CCD-CCE-CCF	3.48	117.58	111.22
4	A	705	R7U	CBI-CBH-CBG	3.70	117.98	111.22
4	A	705	R7U	CBD-CBE-CBF	3.91	118.36	111.22
4	A	705	R7U	CBC-CBB-NBA	3.97	119.47	113.00
4	A	705	R7U	CBC-CBD-CBE	4.13	119.97	111.42
4	A	705	R7U	CCG-CCF-NCA	4.86	116.33	109.07
4	A	705	R7U	CBF-CBG-NBL	4.92	116.41	109.07
4	A	705	R7U	CCB-CCC-CCD	5.13	119.38	111.43
4	A	705	R7U	CBK-CBJ-CBI	5.25	119.58	111.43
4	A	705	R7U	CCC-CCB-NCA	5.58	122.10	113.00
4	A	705	R7U	CBJ-CBK-NBL	5.74	122.36	113.00
4	A	705	R7U	CBB-CBC-CBD	5.87	120.53	111.43

All (4) chirality outliers are listed below:

Mol	Chain	Res	Type	Atom
4	A	705	R7U	CBG
4	A	705	R7U	CCF
4	A	705	R7U	CBF
4	A	705	R7U	CCG

There are no torsion outliers.

There are no ring outliers.

3 monomers are involved in 14 short contacts:

Mol	Chain	Res	Type	Clashes	Symm-Clashes
4	A	705	R7U	12	0
6	A	724	GOL	1	0
6	A	726	GOL	1	0

5.7 Other polymers [i](#)

There are no such residues in this entry.

5.8 Polymer linkage issues [i](#)

There are no chain breaks in this entry.

6 Fit of model and data ⓘ

6.1 Protein, DNA and RNA chains ⓘ

In the following table, the column labelled ‘#RSRZ > 2’ contains the number (and percentage) of RSRZ outliers, followed by percent RSRZ outliers for the chain as percentile scores relative to all X-ray entries and entries of similar resolution. The OWAB column contains the minimum, median, 95th percentile and maximum values of the occupancy-weighted average B-factor per residue. The column labelled ‘Q < 0.9’ lists the number of (and percentage) of residues with an average occupancy less than 0.9.

Mol	Chain	Analysed	<RSRZ>	#RSRZ>2	OWAB(Å ²)	Q<0.9
1	A	619/646 (95%)	-0.01	30 (4%) 31 37	13, 21, 33, 51	0

All (30) RSRZ outliers are listed below:

Mol	Chain	Res	Type	RSRZ
1	A	52	GLY	9.7
1	A	53	SER	9.4
1	A	54	GLU	7.4
1	A	51	ALA	7.3
1	A	314	GLY	5.6
1	A	628	ASN	5.1
1	A	55	ALA	4.9
1	A	266	ASP	4.8
1	A	50	GLY	4.6
1	A	9	ALA	4.5
1	A	105[A]	PHE	4.4
1	A	225	PRO	4.2
1	A	462	PRO	4.0
1	A	358	LEU	3.8
1	A	313	LEU	3.2
1	A	267	ARG	3.1
1	A	315	CYS	3.1
1	A	414	GLY	2.8
1	A	339	ARG	2.7
1	A	68	SER	2.7
1	A	48	ALA	2.5
1	A	163	PRO	2.5
1	A	463	GLY	2.5
1	A	106	GLU	2.4
1	A	312	GLU	2.4
1	A	265	GLY	2.3
1	A	336	ARG	2.2

Continued on next page...

Continued from previous page...

Mol	Chain	Res	Type	RSRZ
1	A	208	GLU	2.2
1	A	413	GLU	2.2
1	A	459	THR	2.2

6.2 Non-standard residues in protein, DNA, RNA chains [i](#)

In the following table, the Atoms column lists the number of modelled atoms in the group and the number defined in the chemical component dictionary. LLDF column lists the quality of electron density of the group with respect to its neighbouring residues in protein, DNA or RNA chains. The B-factors column lists the minimum, median, 95th percentile and maximum values of B factors of atoms in the group. The column labelled 'Q < 0.9' lists the number of atoms with occupancy less than 0.9.

Mol	Type	Chain	Res	Atoms	RSCC	RSR	LLDF	B-factors(Å ²)	Q<0.9
1	TPQ	A	382	14/15	0.92	0.12	-	18,23,32,35	0

6.3 Carbohydrates [i](#)

There are no carbohydrates in this entry.

6.4 Ligands [i](#)

In the following table, the Atoms column lists the number of modelled atoms in the group and the number defined in the chemical component dictionary. LLDF column lists the quality of electron density of the group with respect to its neighbouring residues in protein, DNA or RNA chains. The B-factors column lists the minimum, median, 95th percentile and maximum values of B factors of atoms in the group. The column labelled 'Q < 0.9' lists the number of atoms with occupancy less than 0.9.

Mol	Type	Chain	Res	Atoms	RSCC	RSR	LLDF	B-factors(Å ²)	Q<0.9
6	GOL	A	725	6/6	0.84	0.20	4.84	45,46,47,48	0
6	GOL	A	726	6/6	0.83	0.17	4.57	37,43,44,46	0
6	GOL	A	721	6/6	0.84	0.14	4.49	35,39,40,43	0
4	R7U	A	705	56/56	0.71	0.33	2.89	45,61,63,63	77
6	GOL	A	723	6/6	0.72	0.25	2.65	48,52,52,53	0
6	GOL	A	722	6/6	0.73	0.14	2.57	57,58,59,60	0
6	GOL	A	724	6/6	0.83	0.14	2.49	42,49,52,52	0
6	GOL	A	720	6/6	0.93	0.14	2.45	28,31,32,32	0
5	SO4	A	710	5/5	0.94	0.12	1.05	58,58,59,59	0
3	NA	A	703	1/1	0.99	0.08	-0.34	23,23,23,23	0

Continued on next page...

Continued from previous page...

Mol	Type	Chain	Res	Atoms	RSCC	RSR	LLDF	B-factors(\AA^2)	Q<0.9
2	CU	A	701	1/1	1.00	0.04	-3.38	24,24,24,24	0

6.5 Other polymers [i](#)

There are no such residues in this entry.