



# Full wwPDB X-ray Structure Validation Report ⓘ

Feb 14, 2017 – 06:16 am GMT

PDB ID : 3CFD  
Title : Purple-fluorescent antibody EP2-25C10 in complex with its stilbene hapten  
Authors : Debler, E.W.; Heine, A.; Wilson, I.A.  
Deposited on : 2008-03-03  
Resolution : 2.50 Å(reported)

This is a Full wwPDB X-ray Structure Validation Report for a publicly released PDB entry.

We welcome your comments at [validation@mail.wwpdb.org](mailto:validation@mail.wwpdb.org)

A user guide is available at

<http://wwpdb.org/validation/2016/XrayValidationReportHelp>

with specific help available everywhere you see the ⓘ symbol.

---

The following versions of software and data (see [references ⓘ](#)) were used in the production of this report:

MolProbity : 4.02b-467  
Mogul : 1.7.2 (RC1), CSD as538be (2017)  
Xtriage (Phenix) : 1.9-1692  
EDS : trunk28620  
Percentile statistics : 20161228.v01 (using entries in the PDB archive December 28th 2016)  
Refmac : 5.8.0135  
CCP4 : 6.5.0  
Ideal geometry (proteins) : Engh & Huber (2001)  
Ideal geometry (DNA, RNA) : Parkinson et al. (1996)  
Validation Pipeline (wwPDB-VP) : recalc28949

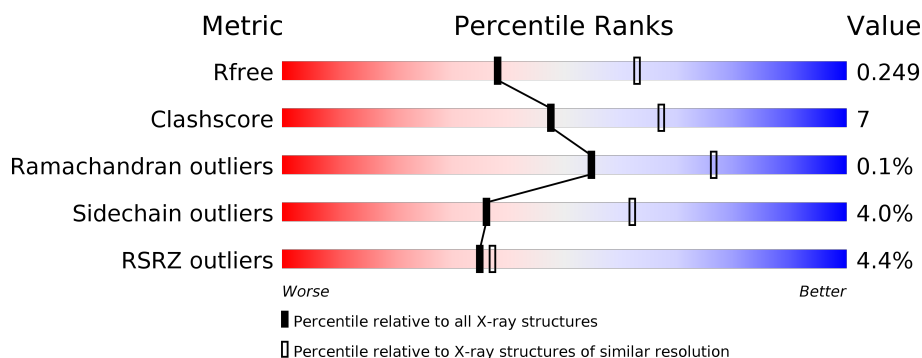
# 1 Overall quality at a glance

The following experimental techniques were used to determine the structure:

## *X-RAY DIFFRACTION*

The reported resolution of this entry is 2.50 Å.

Percentile scores (ranging between 0-100) for global validation metrics of the entry are shown in the following graphic. The table shows the number of entries on which the scores are based.



Metric	Whole archive (#Entries)	Similar resolution (#Entries, resolution range(Å))
$R_{free}$	100719	3846 (2.50-2.50)
Clashscore	112137	4554 (2.50-2.50)
Ramachandran outliers	110173	4463 (2.50-2.50)
Sidechain outliers	110143	4465 (2.50-2.50)
RSRZ outliers	101464	3876 (2.50-2.50)

The table below summarises the geometric issues observed across the polymeric chains and their fit to the electron density. The red, orange, yellow and green segments on the lower bar indicate the fraction of residues that contain outliers for  $\geq 3$ , 2, 1 and 0 types of geometric quality criteria. A grey segment represents the fraction of residues that are not modelled. The numeric value for each fraction is indicated below the corresponding segment, with a dot representing fractions  $\leq 5\%$ . The upper red bar (where present) indicates the fraction of residues that have poor fit to the electron density. The numeric value is given above the bar.

Mol	Chain	Length	Quality of chain
1	A	214	<div> <div>2%</div> <div> <div></div> <div>83%</div> <div>15%</div> <div>.</div> </div> </div>
1	L	214	<div> <div>%</div> <div> <div></div> <div>82%</div> <div>16%</div> <div>.</div> </div> </div>
2	B	220	<div> <div>6%</div> <div> <div></div> <div>84%</div> <div>15%</div> <div>.</div> </div> </div>
2	H	220	<div> <div>8%</div> <div> <div></div> <div>85%</div> <div>12%</div> <div>.</div> </div> </div>

## 2 Entry composition [i](#)

There are 5 unique types of molecules in this entry. The entry contains 6824 atoms, of which 0 are hydrogens and 0 are deuteriums.

In the tables below, the ZeroOcc column contains the number of atoms modelled with zero occupancy, the AltConf column contains the number of residues with at least one atom in alternate conformation and the Trace column contains the number of residues modelled with at most 2 atoms.

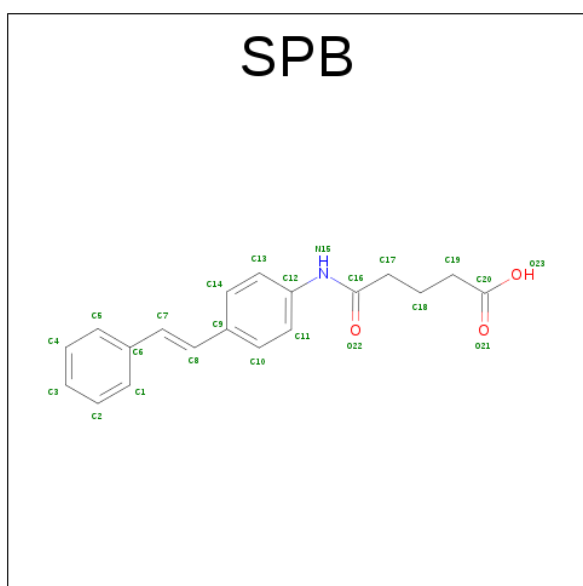
- Molecule 1 is a protein called PURPLE-FLUORESCENT ANTIBODY EP2-25C10-KAPPA LIGHT CHAIN.

Mol	Chain	Residues	Atoms					ZeroOcc	AltConf	Trace
1	L	213	Total	C	N	O	S	0	0	0
			1650	1021	279	344	6			
1	A	213	Total	C	N	O	S	0	0	0
			1650	1021	279	344	6			

- Molecule 2 is a protein called PURPLE-FLUORESCENT ANTIBODY EP2-25C10-IGG2B HEAVY CHAIN.

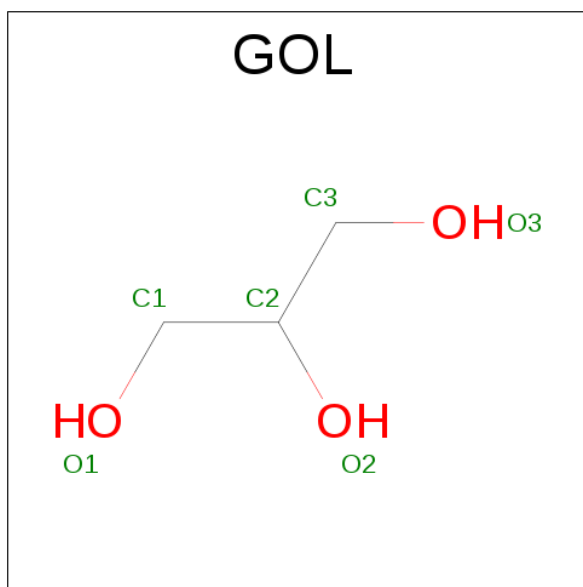
Mol	Chain	Residues	Atoms					ZeroOcc	AltConf	Trace
2	H	220	Total	C	N	O	S	0	0	0
			1674	1049	277	341	7			
2	B	219	Total	C	N	O	S	0	0	0
			1667	1046	276	338	7			

- Molecule 3 is 4-(4-STYRYL-PHENYLCARBAMOYL)-BUTYRIC ACID (three-letter code: SPB) (formula: C<sub>19</sub>H<sub>19</sub>NO<sub>3</sub>).



Mol	Chain	Residues	Atoms				ZeroOcc	AltConf
3	H	1	Total	C	N	O	0	0
			23	19	1	3		
3	B	1	Total	C	N	O	0	0
			23	19	1	3		

- Molecule 4 is GLYCEROL (three-letter code: GOL) (formula:  $C_3H_8O_3$ ).



Mol	Chain	Residues	Atoms			ZeroOcc	AltConf
4	H	1	Total	C	O	0	0
			6	3	3		

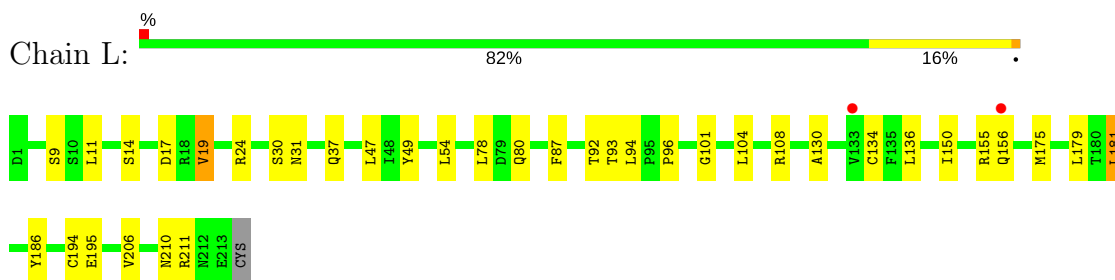
- Molecule 5 is water.

Mol	Chain	Residues	Atoms		ZeroOcc	AltConf
5	A	31	Total	O	0	0
			31	31		
5	B	27	Total	O	0	0
			27	27		
5	H	36	Total	O	0	0
			36	36		
5	L	37	Total	O	0	0
			37	37		

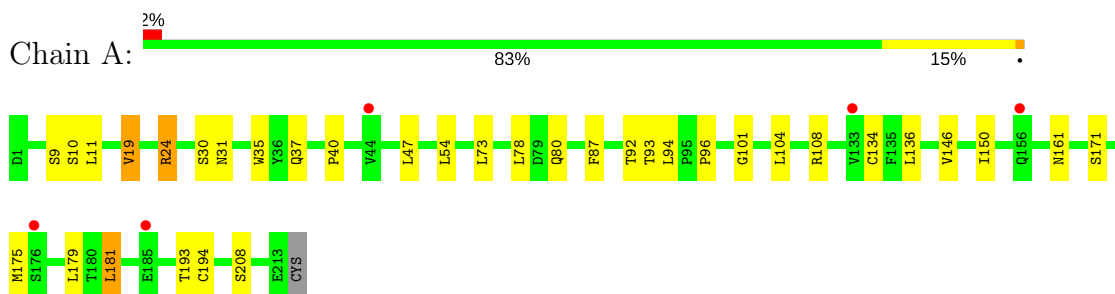
### 3 Residue-property plots [i](#)

These plots are drawn for all protein, RNA and DNA chains in the entry. The first graphic for a chain summarises the proportions of the various outlier classes displayed in the second graphic. The second graphic shows the sequence view annotated by issues in geometry and electron density. Residues are color-coded according to the number of geometric quality criteria for which they contain at least one outlier: green = 0, yellow = 1, orange = 2 and red = 3 or more. A red dot above a residue indicates a poor fit to the electron density ( $RSRZ > 2$ ). Stretches of 2 or more consecutive residues without any outlier are shown as a green connector. Residues present in the sample, but not in the model, are shown in grey.

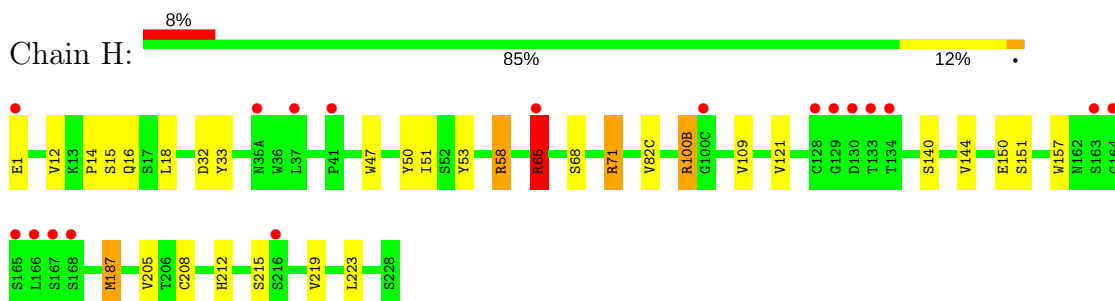
- Molecule 1: PURPLE-FLUORESCENT ANTIBODY EP2-25C10-KAPPA LIGHT CHAIN



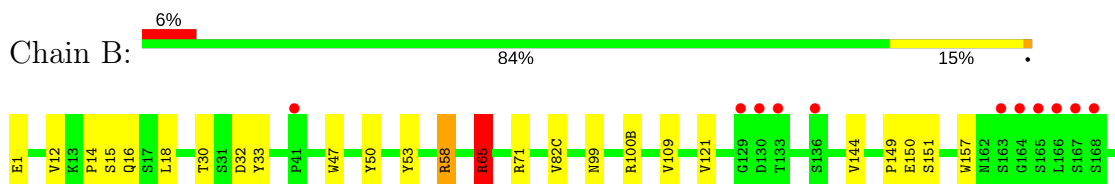
- Molecule 1: PURPLE-FLUORESCENT ANTIBODY EP2-25C10-KAPPA LIGHT CHAIN



- Molecule 2: PURPLE-FLUORESCENT ANTIBODY EP2-25C10-IGG2B HEAVY CHAIN



- Molecule 2: PURPLE-FLUORESCENT ANTIBODY EP2-25C10-IGG2B HEAVY CHAIN





## 4 Data and refinement statistics

Property	Value	Source
Space group	P 1	Depositor
Cell constants a, b, c, $\alpha$ , $\beta$ , $\gamma$	59.99Å 72.48Å 77.23Å 91.98° 106.11° 114.15°	Depositor
Resolution (Å)	29.88 – 2.50 29.81 – 2.50	Depositor EDS
% Data completeness (in resolution range)	100.0 (29.88-2.50) 86.5 (29.81-2.50)	Depositor EDS
$R_{merge}$	(Not available)	Depositor
$R_{sym}$	0.08	Depositor
$\langle I/\sigma(I) \rangle$ <sup>1</sup>	1.94 (at 2.51Å)	Xtriage
Refinement program	REFMAC 5.3.0017	Depositor
R, $R_{free}$	0.211 , 0.243 0.214 , 0.249	Depositor DCC
$R_{free}$ test set	1746 reflections (5.22%)	DCC
Wilson B-factor (Å <sup>2</sup> )	34.1	Xtriage
Anisotropy	0.065	Xtriage
Bulk solvent $k_{sol}$ (e/Å <sup>3</sup> ), $B_{sol}$ (Å <sup>2</sup> )	0.33 , 46.2	EDS
L-test for twinning <sup>2</sup>	$\langle  L  \rangle = 0.50$ , $\langle L^2 \rangle = 0.33$	Xtriage
Estimated twinning fraction	No twinning to report.	Xtriage
$F_o, F_c$ correlation	0.92	EDS
Total number of atoms	6824	wwPDB-VP
Average B, all atoms (Å <sup>2</sup> )	39.0	wwPDB-VP

Xtriage's analysis on translational NCS is as follows: *The largest off-origin peak in the Patterson function is 6.75% of the height of the origin peak. No significant pseudotranslation is detected.*

<sup>1</sup>Intensities estimated from amplitudes.

<sup>2</sup>Theoretical values of  $\langle |L| \rangle$ ,  $\langle L^2 \rangle$  for acentric reflections are 0.5, 0.333 respectively for untwinned datasets, and 0.375, 0.2 for perfectly twinned datasets.

## 5 Model quality [i](#)

### 5.1 Standard geometry [i](#)

Bond lengths and bond angles in the following residue types are not validated in this section: GOL, SPB

The Z score for a bond length (or angle) is the number of standard deviations the observed value is removed from the expected value. A bond length (or angle) with  $|Z| > 5$  is considered an outlier worth inspection. RMSZ is the root-mean-square of all Z scores of the bond lengths (or angles).

Mol	Chain	Bond lengths		Bond angles	
		RMSZ	# $ Z  > 5$	RMSZ	# $ Z  > 5$
1	A	0.56	1/1684 (0.1%)	0.67	1/2288 (0.0%)
1	L	0.59	1/1684 (0.1%)	0.66	1/2288 (0.0%)
2	B	0.85	4/1711 (0.2%)	0.72	5/2341 (0.2%)
2	H	0.87	4/1718 (0.2%)	0.73	2/2349 (0.1%)
All	All	0.73	10/6797 (0.1%)	0.69	9/9266 (0.1%)

All (10) bond length outliers are listed below:

Mol	Chain	Res	Type	Atoms	Z	Observed(Å)	Ideal(Å)
2	B	53	TYR	CE2-CZ	-16.56	1.17	1.38
2	H	53	TYR	CE2-CZ	-15.11	1.19	1.38
2	B	53	TYR	CE1-CZ	-14.30	1.20	1.38
2	H	53	TYR	CE1-CZ	-14.13	1.20	1.38
2	H	53	TYR	CG-CD1	-13.14	1.22	1.39
2	B	53	TYR	CG-CD1	-12.91	1.22	1.39
2	H	53	TYR	CG-CD2	-12.88	1.22	1.39
2	B	53	TYR	CG-CD2	-11.92	1.23	1.39
1	L	194	CYS	CB-SG	-7.64	1.69	1.82
1	A	194	CYS	CB-SG	-6.45	1.71	1.82

All (9) bond angle outliers are listed below:

Mol	Chain	Res	Type	Atoms	Z	Observed(°)	Ideal(°)
2	B	58	ARG	NE-CZ-NH1	-6.83	116.89	120.30
2	H	65	ARG	NE-CZ-NH1	6.29	123.44	120.30
1	A	24	ARG	NE-CZ-NH1	5.76	123.18	120.30
2	H	58	ARG	NE-CZ-NH1	-5.75	117.42	120.30
2	B	65	ARG	NE-CZ-NH1	5.72	123.16	120.30
2	B	53	TYR	CD1-CG-CD2	-5.38	111.98	117.90
1	L	24	ARG	NE-CZ-NH1	5.34	122.97	120.30

*Continued on next page...*



*Continued from previous page...*

Mol	Chain	Res	Type	Atoms	Z	Observed(°)	Ideal(°)
2	B	53	TYR	CB-CG-CD1	5.26	124.16	121.00
2	B	53	TYR	CD1-CE1-CZ	5.20	124.48	119.80

There are no chirality outliers.

There are no planarity outliers.

## 5.2 Too-close contacts ⓘ

In the following table, the Non-H and H(model) columns list the number of non-hydrogen atoms and hydrogen atoms in the chain respectively. The H(added) column lists the number of hydrogen atoms added and optimized by MolProbity. The Clashes column lists the number of clashes within the asymmetric unit, whereas Symm-Clashes lists symmetry related clashes.

Mol	Chain	Non-H	H(model)	H(added)	Clashes	Symm-Clashes
1	A	1650	0	1578	20	0
1	L	1650	0	1578	19	0
2	B	1667	0	1608	28	0
2	H	1674	0	1613	29	0
3	B	23	0	18	1	0
3	H	23	0	18	1	0
4	H	6	0	8	2	0
5	A	31	0	0	3	0
5	B	27	0	0	1	0
5	H	36	0	0	0	0
5	L	37	0	0	0	0
All	All	6824	0	6421	92	0

The all-atom clashscore is defined as the number of clashes found per 1000 atoms (including hydrogen atoms). The all-atom clashscore for this structure is 7.

All (92) close contacts within the same asymmetric unit are listed below, sorted by their clash magnitude.

Atom-1	Atom-2	Interatomic distance (Å)	Clash overlap (Å)
1:L:92:THR:HG23	1:L:93:THR:HG23	1.38	1.06
1:A:92:THR:HG23	1:A:93:THR:HG23	1.42	0.99
1:A:136:LEU:HD13	1:A:175:MET:HE2	1.67	0.75
2:B:144:VAL:CG2	2:B:187:MET:HE2	2.21	0.70
2:H:144:VAL:CG2	2:H:187:MET:HE1	2.21	0.70
1:L:150:ILE:HD11	1:L:179:LEU:HD21	1.76	0.65
2:H:65:ARG:HH11	2:H:65:ARG:CG	2.10	0.63

*Continued on next page...*

*Continued from previous page...*

Atom-1	Atom-2	Interatomic distance (Å)	Clash overlap (Å)
2:B:65:ARG:CG	2:B:65:ARG:HH11	2.11	0.63
2:H:121:VAL:HG21	2:H:219:VAL:CG2	2.29	0.63
2:H:71:ARG:HD3	4:H:401:GOL:H32	1.81	0.63
1:A:150:ILE:HD11	1:A:179:LEU:HD21	1.82	0.61
2:B:121:VAL:HG21	2:B:219:VAL:CG2	2.30	0.60
1:L:11:LEU:HD21	1:L:19:VAL:HG12	1.83	0.60
2:H:14:PRO:O	2:H:15:SER:HB3	2.00	0.60
1:L:96:PRO:HD2	2:H:47:TRP:CD2	2.37	0.60
2:B:14:PRO:O	2:B:15:SER:HB3	1.99	0.60
2:H:1:GLU:O	2:H:1:GLU:CG	2.49	0.60
1:A:11:LEU:HD21	1:A:19:VAL:HG12	1.84	0.59
1:L:136:LEU:N	1:L:136:LEU:HD12	2.19	0.57
2:B:18:LEU:CD1	2:B:109:VAL:HG11	2.35	0.57
2:B:1:GLU:CG	2:B:1:GLU:O	2.52	0.56
2:H:157:TRP:CZ3	2:H:208:CYS:HB3	2.41	0.56
1:A:96:PRO:HD2	2:B:47:TRP:CD2	2.41	0.56
1:A:40:PRO:HG2	5:A:237:HOH:O	2.06	0.55
2:H:71:ARG:HD3	4:H:401:GOL:C3	2.36	0.54
2:B:65:ARG:HG3	2:B:65:ARG:HH11	1.71	0.54
1:A:78:LEU:HD11	1:A:104:LEU:HD21	1.88	0.54
2:B:157:TRP:CZ3	2:B:208:CYS:HB3	2.43	0.54
2:H:144:VAL:HB	2:H:187:MET:HE2	1.90	0.53
2:H:65:ARG:HG3	2:H:65:ARG:HH11	1.73	0.52
1:L:78:LEU:HD11	1:L:104:LEU:HD21	1.90	0.52
2:B:18:LEU:HD11	2:B:109:VAL:HG11	1.89	0.52
2:B:144:VAL:HG21	2:B:187:MET:HE2	1.92	0.52
2:H:150:GLU:CG	2:H:151:SER:HA	2.39	0.52
2:H:144:VAL:HG23	2:H:187:MET:HE1	1.92	0.52
2:H:212:HIS:ND1	2:H:215:SER:HB3	2.25	0.51
1:L:87:PHE:CE1	1:L:101:GLY:HA3	2.45	0.51
1:A:136:LEU:HD13	1:A:175:MET:CE	2.38	0.51
2:B:1:GLU:HG3	2:B:1:GLU:O	2.09	0.51
1:L:195:GLU:HG2	1:L:206:VAL:HG22	1.92	0.51
1:A:161:ASN:O	2:B:177:LEU:HD11	2.11	0.51
2:H:144:VAL:HG21	2:H:187:MET:HE1	1.93	0.50
3:H:301:SPB:O22	3:H:301:SPB:H13C	2.10	0.50
1:A:87:PHE:CE1	1:A:101:GLY:HA3	2.46	0.50
1:L:136:LEU:HD13	1:L:175:MET:CE	2.42	0.50
1:A:94:LEU:HD12	2:B:58:ARG:HH21	1.77	0.50
2:B:212:HIS:ND1	2:B:215:SER:HB3	2.26	0.49
2:B:144:VAL:HG23	2:B:187:MET:HE2	1.96	0.48

*Continued on next page...*

*Continued from previous page...*

Atom-1	Atom-2	Interatomic distance (Å)	Clash overlap (Å)
2:H:121:VAL:CG2	2:H:219:VAL:HG21	2.43	0.48
1:L:94:LEU:HD12	2:H:58:ARG:HH21	1.78	0.48
1:L:155:ARG:HG2	1:L:179:LEU:HD11	1.96	0.48
2:H:1:GLU:HG3	2:H:1:GLU:O	2.11	0.48
1:L:136:LEU:HD13	1:L:175:MET:HE1	1.95	0.48
1:A:30:SER:O	1:A:31:ASN:HB2	2.13	0.47
2:B:150:GLU:CG	2:B:151:SER:HA	2.43	0.47
3:B:302:SPB:H13C	3:B:302:SPB:O22	2.14	0.47
2:B:121:VAL:CG2	2:B:219:VAL:HG21	2.45	0.47
1:A:24:ARG:NE	5:A:236:HOH:O	2.48	0.47
1:L:186:TYR:CZ	1:L:211:ARG:HD3	2.50	0.47
1:A:181:LEU:H	1:A:181:LEU:HD12	1.79	0.47
2:B:16:GLN:O	2:B:82(C):VAL:HG22	2.16	0.46
1:A:24:ARG:CZ	5:A:236:HOH:O	2.63	0.46
1:A:136:LEU:HD12	1:A:136:LEU:N	2.30	0.46
2:H:144:VAL:CG2	2:H:187:MET:CE	2.93	0.46
2:H:18:LEU:CD1	2:H:109:VAL:HG11	2.46	0.45
2:H:205:VAL:HG12	2:H:223:LEU:HD12	1.98	0.45
2:B:205:VAL:HG12	2:B:223:LEU:HD12	1.98	0.45
2:B:149:PRO:HD2	2:B:214:ALA:CB	2.47	0.45
2:H:144:VAL:HB	2:H:187:MET:CE	2.47	0.44
2:B:179:GLN:HB3	5:B:319:HOH:O	2.16	0.44
1:L:37:GLN:HB2	1:L:47:LEU:HD11	2.00	0.44
1:A:193:THR:HA	1:A:208:SER:HB3	2.00	0.43
2:B:157:TRP:HZ3	2:B:223:LEU:HD11	1.83	0.43
2:B:32:ASP:O	2:B:33:TYR:HB2	2.17	0.43
1:A:37:GLN:HB2	1:A:47:LEU:HD11	2.01	0.43
1:L:130:ALA:O	1:L:181:LEU:HD12	2.18	0.43
2:B:121:VAL:HG21	2:B:219:VAL:HG22	2.00	0.42
2:B:144:VAL:HB	2:B:187:MET:HE3	2.01	0.42
2:H:121:VAL:HG21	2:H:219:VAL:HG21	2.01	0.42
2:H:51:ILE:HD11	2:H:71:ARG:HD2	2.00	0.42
2:H:140:SER:HB3	2:H:223:LEU:HD13	2.01	0.42
2:H:16:GLN:O	2:H:82(C):VAL:HG22	2.20	0.42
1:A:136:LEU:HD21	1:A:146:VAL:HG22	2.00	0.42
1:A:35:TRP:CE2	1:A:73:LEU:HB2	2.54	0.41
2:B:144:VAL:CG2	2:B:187:MET:CE	2.97	0.41
2:B:144:VAL:HB	2:B:187:MET:CE	2.50	0.41
1:L:49:TYR:CE2	2:H:100(B):ARG:NH1	2.89	0.41
2:H:32:ASP:O	2:H:33:TYR:HB2	2.20	0.41
1:L:210:ASN:N	1:L:210:ASN:HD22	2.19	0.41

*Continued on next page...*

*Continued from previous page...*

Atom-1	Atom-2	Interatomic distance (Å)	Clash overlap (Å)
1:L:30:SER:O	1:L:31:ASN:HB2	2.19	0.41
2:H:121:VAL:HG21	2:H:219:VAL:HG22	2.03	0.40
1:L:14:SER:O	1:L:17:ASP:HB2	2.21	0.40

There are no symmetry-related clashes.

## 5.3 Torsion angles [i](#)

### 5.3.1 Protein backbone [i](#)

In the following table, the Percentiles column shows the percent Ramachandran outliers of the chain as a percentile score with respect to all X-ray entries followed by that with respect to entries of similar resolution.

The Analysed column shows the number of residues for which the backbone conformation was analysed, and the total number of residues.

Mol	Chain	Analysed	Favoured	Allowed	Outliers	Percentiles	
1	A	211/214 (99%)	207 (98%)	4 (2%)	0	100	100
1	L	211/214 (99%)	206 (98%)	5 (2%)	0	100	100
2	B	217/220 (99%)	208 (96%)	8 (4%)	1 (0%)	32	53
2	H	218/220 (99%)	208 (95%)	10 (5%)	0	100	100
All	All	857/868 (99%)	829 (97%)	27 (3%)	1 (0%)	55	76

All (1) Ramachandran outliers are listed below:

Mol	Chain	Res	Type
2	B	99	ASN

### 5.3.2 Protein sidechains [i](#)

In the following table, the Percentiles column shows the percent sidechain outliers of the chain as a percentile score with respect to all X-ray entries followed by that with respect to entries of similar resolution.

The Analysed column shows the number of residues for which the sidechain conformation was analysed, and the total number of residues.

Mol	Chain	Analysed	Rotameric	Outliers	Percentiles	
1	A	191/192 (100%)	182 (95%)	9 (5%)	30	54
1	L	191/192 (100%)	183 (96%)	8 (4%)	34	59
2	B	193/194 (100%)	186 (96%)	7 (4%)	40	67
2	H	194/194 (100%)	187 (96%)	7 (4%)	40	67
All	All	769/772 (100%)	738 (96%)	31 (4%)	36	62

All (31) residues with a non-rotameric sidechain are listed below:

Mol	Chain	Res	Type
1	L	9	SER
1	L	19	VAL
1	L	54	LEU
1	L	80	GLN
1	L	108	ARG
1	L	134	CYS
1	L	156	GLN
1	L	181	LEU
2	H	12	VAL
2	H	50	TYR
2	H	65	ARG
2	H	68	SER
2	H	71	ARG
2	H	100(B)	ARG
2	H	187	MET
1	A	9	SER
1	A	10	SER
1	A	19	VAL
1	A	54	LEU
1	A	80	GLN
1	A	108	ARG
1	A	134	CYS
1	A	171	SER
1	A	181	LEU
2	B	12	VAL
2	B	30	THR
2	B	50	TYR
2	B	65	ARG
2	B	71	ARG
2	B	100(B)	ARG
2	B	187	MET

Some sidechains can be flipped to improve hydrogen bonding and reduce clashes. All (4) such

sidechains are listed below:

Mol	Chain	Res	Type
2	H	179	GLN
1	A	38	GLN
1	A	156	GLN
2	B	39	GLN

### 5.3.3 RNA [i](#)

There are no RNA molecules in this entry.

## 5.4 Non-standard residues in protein, DNA, RNA chains [i](#)

There are no non-standard protein/DNA/RNA residues in this entry.

## 5.5 Carbohydrates [i](#)

There are no carbohydrates in this entry.

## 5.6 Ligand geometry [i](#)

3 ligands are modelled in this entry.

In the following table, the Counts columns list the number of bonds (or angles) for which Mogul statistics could be retrieved, the number of bonds (or angles) that are observed in the model and the number of bonds (or angles) that are defined in the chemical component dictionary. The Link column lists molecule types, if any, to which the group is linked. The Z score for a bond length (or angle) is the number of standard deviations the observed value is removed from the expected value. A bond length (or angle) with  $|Z| > 2$  is considered an outlier worth inspection. RMSZ is the root-mean-square of all Z scores of the bond lengths (or angles).

Mol	Type	Chain	Res	Link	Bond lengths			Bond angles		
					Counts	RMSZ	$\# Z  > 2$	Counts	RMSZ	$\# Z  > 2$
3	SPB	B	302	-	21,24,24	0.41	0	26,30,30	1.18	3 (11%)
3	SPB	H	301	-	21,24,24	0.40	0	26,30,30	0.71	0
4	GOL	H	401	-	5,5,5	0.44	0	5,5,5	0.50	0

In the following table, the Chirals column lists the number of chiral outliers, the number of chiral centers analysed, the number of these observed in the model and the number defined in the chemical component dictionary. Similar counts are reported in the Torsion and Rings columns. '-' means no outliers of that kind were identified.

Mol	Type	Chain	Res	Link	Chirals	Torsions	Rings
3	SPB	B	302	-	-	0/13/15/15	0/2/2/2
3	SPB	H	301	-	-	0/13/15/15	0/2/2/2
4	GOL	H	401	-	-	0/4/4/4	0/0/0/0

There are no bond length outliers.

All (3) bond angle outliers are listed below:

Mol	Chain	Res	Type	Atoms	Z	Observed(°)	Ideal(°)
3	B	302	SPB	O22-C16-C17	-2.96	116.45	122.01
3	B	302	SPB	C12-N15-C16	-2.74	122.58	127.49
3	B	302	SPB	C17-C16-N15	2.04	118.18	114.53

There are no chirality outliers.

There are no torsion outliers.

There are no ring outliers.

3 monomers are involved in 4 short contacts:

Mol	Chain	Res	Type	Clashes	Symm-Clashes
3	B	302	SPB	1	0
3	H	301	SPB	1	0
4	H	401	GOL	2	0

## 5.7 Other polymers [i](#)

There are no such residues in this entry.

## 5.8 Polymer linkage issues [i](#)

There are no chain breaks in this entry.

## 6 Fit of model and data

### 6.1 Protein, DNA and RNA chains

In the following table, the column labelled ‘#RSRZ> 2’ contains the number (and percentage) of RSRZ outliers, followed by percent RSRZ outliers for the chain as percentile scores relative to all X-ray entries and entries of similar resolution. The OWAB column contains the minimum, median, 95<sup>th</sup> percentile and maximum values of the occupancy-weighted average B-factor per residue. The column labelled ‘Q< 0.9’ lists the number of (and percentage) of residues with an average occupancy less than 0.9.

Mol	Chain	Analysed	<RSRZ>	#RSRZ>2	OWAB(Å <sup>2</sup> )	Q<0.9
1	A	213/214 (99%)	-0.05	5 (2%) 61 63	33, 39, 43, 49	0
1	L	213/214 (99%)	-0.07	2 (0%) 84 85	33, 39, 43, 49	0
2	B	219/220 (99%)	0.40	13 (5%) 23 24	32, 39, 57, 63	0
2	H	220/220 (100%)	0.41	18 (8%) 12 12	32, 39, 58, 67	0
All	All	865/868 (99%)	0.18	38 (4%) 35 37	32, 39, 51, 67	0

All (38) RSRZ outliers are listed below:

Mol	Chain	Res	Type	RSRZ
2	B	165	SER	10.3
2	H	167	SER	9.9
2	H	165	SER	8.7
2	B	166	LEU	8.5
2	B	167	SER	7.9
2	B	164	GLY	7.3
2	H	164	GLY	7.2
2	B	129	GLY	6.5
2	H	163	SER	6.4
2	H	166	LEU	6.3
2	B	133	THR	6.1
2	B	163	SER	5.9
2	H	128	CYS	4.9
2	H	133	THR	4.6
2	H	134	THR	4.5
2	H	129	GLY	4.4
2	B	168	SER	4.1
1	A	156	GLN	3.6
2	H	168	SER	3.6
1	L	156	GLN	3.2
2	B	130	ASP	3.2

*Continued on next page...*



*Continued from previous page...*

Mol	Chain	Res	Type	RSRZ
2	H	130	ASP	3.1
2	B	204	THR	2.8
2	B	136	SER	2.8
2	H	216	SER	2.7
1	L	133	VAL	2.5
2	B	216	SER	2.4
2	H	65	ARG	2.3
2	B	41	PRO	2.3
2	H	37	LEU	2.2
1	A	176	SER	2.2
1	A	185	GLU	2.1
2	H	35(A)	ASN	2.1
1	A	44	VAL	2.1
1	A	133	VAL	2.1
2	H	41	PRO	2.1
2	H	100(C)	GLY	2.0
2	H	1	GLU	2.0

## 6.2 Non-standard residues in protein, DNA, RNA chains [i](#)

There are no non-standard protein/DNA/RNA residues in this entry.

## 6.3 Carbohydrates [i](#)

There are no carbohydrates in this entry.

## 6.4 Ligands [i](#)

In the following table, the Atoms column lists the number of modelled atoms in the group and the number defined in the chemical component dictionary. LLDF column lists the quality of electron density of the group with respect to its neighbouring residues in protein, DNA or RNA chains. The B-factors column lists the minimum, median, 95<sup>th</sup> percentile and maximum values of B factors of atoms in the group. The column labelled 'Q < 0.9' lists the number of atoms with occupancy less than 0.9.

Mol	Type	Chain	Res	Atoms	RSCC	RSR	LLDF	B-factors(Å <sup>2</sup> )	Q<0.9
4	GOL	H	401	6/6	0.90	0.16	0.12	48,49,50,50	0
3	SPB	H	301	23/23	0.84	0.21	-0.02	29,29,45,49	0
3	SPB	B	302	23/23	0.88	0.18	-0.30	31,31,46,48	0

## 6.5 Other polymers [i](#)

There are no such residues in this entry.