



Full wwPDB X-ray Structure Validation Report ⓘ

Feb 13, 2017 – 03:56 am GMT

PDB ID : 5CLS
Title : Structure of human methionine aminopeptidase-2 complexed with spiroepoxy-triazole inhibitor (+)-31a
Authors : Janowski, R.; Miller, A.K.; Niessing, D.
Deposited on : 2015-07-16
Resolution : 1.75 Å(reported)

This is a Full wwPDB X-ray Structure Validation Report for a publicly released PDB entry.

We welcome your comments at validation@mail.wwpdb.org

A user guide is available at

<http://wwpdb.org/validation/2016/XrayValidationReportHelp>

with specific help available everywhere you see the ⓘ symbol.

The following versions of software and data (see [references ⓘ](#)) were used in the production of this report:

MolProbity : 4.02b-467
Mogul : 1.7.2 (RC1), CSD as538be (2017)
Xtriage (Phenix) : 1.9-1692
EDS : trunk28620
Percentile statistics : 20161228.v01 (using entries in the PDB archive December 28th 2016)
Refmac : 5.8.0135
CCP4 : 6.5.0
Ideal geometry (proteins) : Engh & Huber (2001)
Ideal geometry (DNA, RNA) : Parkinson et al. (1996)
Validation Pipeline (wwPDB-VP) : recalc28949

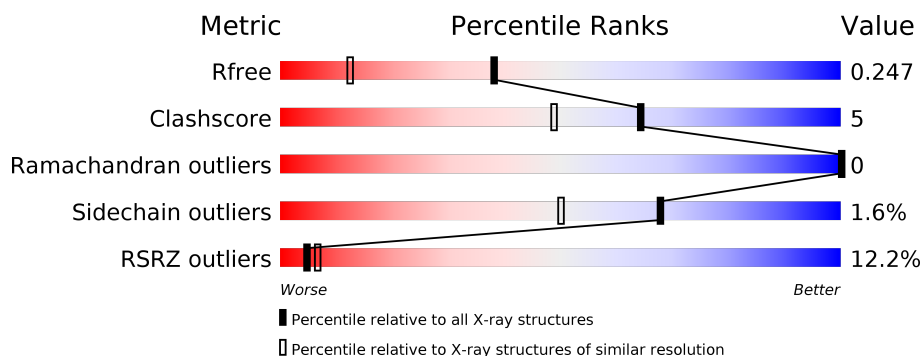
1 Overall quality at a glance

The following experimental techniques were used to determine the structure:

X-RAY DIFFRACTION

The reported resolution of this entry is 1.75 Å.

Percentile scores (ranging between 0-100) for global validation metrics of the entry are shown in the following graphic. The table shows the number of entries on which the scores are based.



Metric	Whole archive (#Entries)	Similar resolution (#Entries, resolution range(Å))
R_{free}	100719	1762 (1.76-1.76)
Clashscore	112137	1889 (1.76-1.76)
Ramachandran outliers	110173	1868 (1.76-1.76)
Sidechain outliers	110143	1868 (1.76-1.76)
RSRZ outliers	101464	1770 (1.76-1.76)

The table below summarises the geometric issues observed across the polymeric chains and their fit to the electron density. The red, orange, yellow and green segments on the lower bar indicate the fraction of residues that contain outliers for ≥ 3 , 2, 1 and 0 types of geometric quality criteria. A grey segment represents the fraction of residues that are not modelled. The numeric value for each fraction is indicated below the corresponding segment, with a dot representing fractions $\leq 5\%$. The upper red bar (where present) indicates the fraction of residues that have poor fit to the electron density. The numeric value is given above the bar.

Mol	Chain	Length	Quality of chain
1	A	371	<div> <div>12%</div> <div>88%</div> <div>11%</div> </div>

The following table lists non-polymeric compounds, carbohydrate monomers and non-standard residues in protein, DNA, RNA chains that are outliers for geometric or electron-density-fit criteria:

Mol	Type	Chain	Res	Chirality	Geometry	Clashes	Electron density
4	GOL	A	505	-	-	-	X
6	CIT	A	507	-	-	-	X

2 Entry composition [i](#)

There are 8 unique types of molecules in this entry. The entry contains 3351 atoms, of which 0 are hydrogens and 0 are deuteriums.

In the tables below, the ZeroOcc column contains the number of atoms modelled with zero occupancy, the AltConf column contains the number of residues with at least one atom in alternate conformation and the Trace column contains the number of residues modelled with at most 2 atoms.

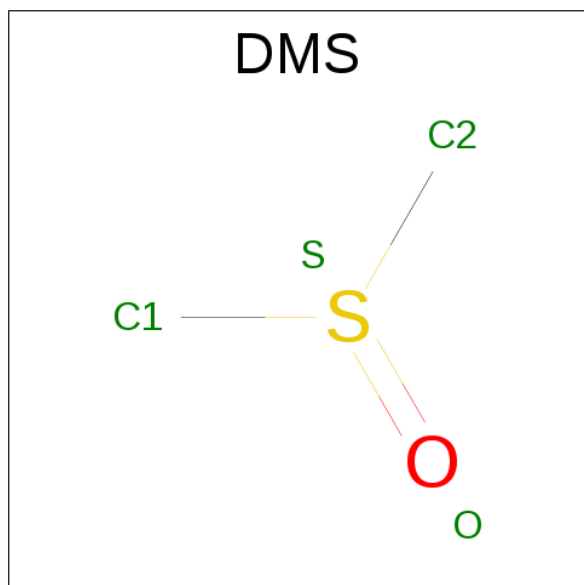
- Molecule 1 is a protein called Methionine aminopeptidase 2.

Mol	Chain	Residues	Atoms					ZeroOcc	AltConf	Trace
1	A	369	Total	C	N	O	S	0	10	0
			2946	1856	506	559	25			

- Molecule 2 is COBALT (II) ION (three-letter code: CO) (formula: Co).

Mol	Chain	Residues	Atoms		ZeroOcc	AltConf
2	A	1	Total	Co	0	0
			1	1		

- Molecule 3 is DIMETHYL SULFOXIDE (three-letter code: DMS) (formula: C₂H₆OS).



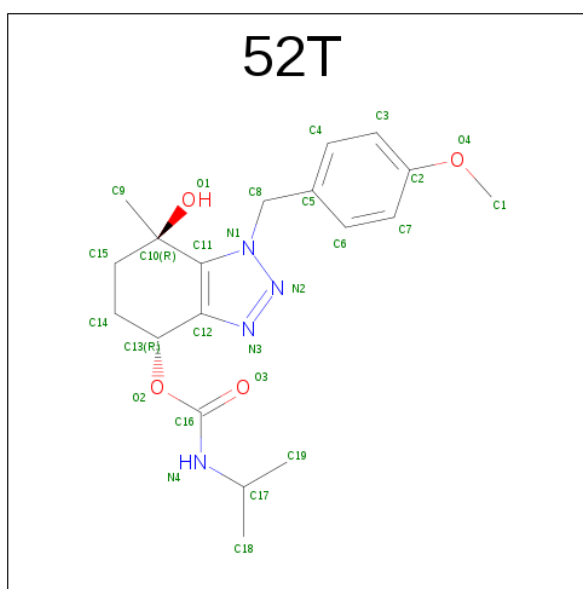
Mol	Chain	Residues	Atoms				ZeroOcc	AltConf
3	A	1	Total	C	O	S	0	1
			8	4	2	2		
3	A	1	Total	C	O	S	0	1
			8	4	2	2		

- Molecule 4 is GLYCEROL (three-letter code: GOL) (formula: $C_3H_8O_3$).



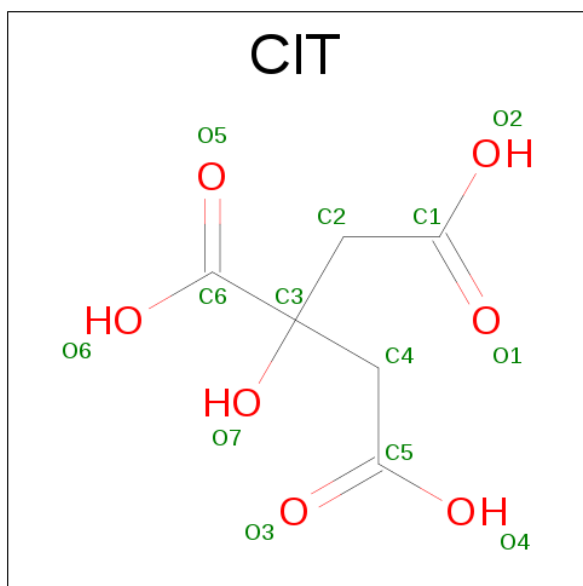
Mol	Chain	Residues	Atoms			ZeroOcc	AltConf
4	A	1	Total	C	O	0	1
			12	6	6		
4	A	1	Total	C	O	0	0
			6	3	3		

- Molecule 5 is (4R,7R)-7-hydroxy-1-(4-methoxybenzyl)-7-methyl-4,5,6,7-tetrahydro-1H-benzotriazol-4-yl propan-2-ylcarbamate (three-letter code: 52T) (formula: $C_{19}H_{26}N_4O_4$).



Mol	Chain	Residues	Atoms				ZeroOcc	AltConf
5	A	1	Total	C	N	O	0	0
			27	19	4	4		

- Molecule 6 is CITRIC ACID (three-letter code: CIT) (formula: $C_6H_8O_7$).



Mol	Chain	Residues	Atoms			ZeroOcc	AltConf
6	A	1	Total	C	O	0	0
			13	6	7		

- Molecule 7 is CHLORIDE ION (three-letter code: CL) (formula: Cl).

Mol	Chain	Residues	Atoms		ZeroOcc	AltConf
7	A	1	Total	Cl	0	0
			1	1		

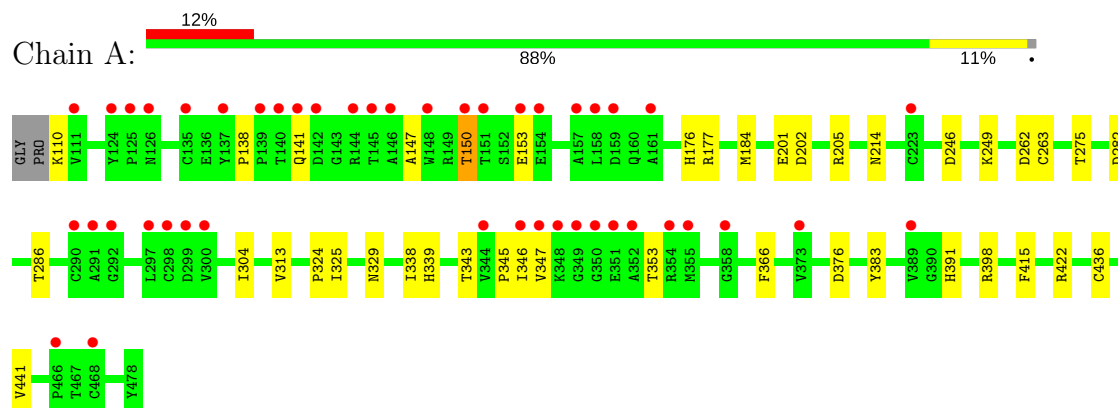
- Molecule 8 is water.

Mol	Chain	Residues	Atoms		ZeroOcc	AltConf
8	A	326	Total	O	0	3
			329	329		

3 Residue-property plots

These plots are drawn for all protein, RNA and DNA chains in the entry. The first graphic for a chain summarises the proportions of the various outlier classes displayed in the second graphic. The second graphic shows the sequence view annotated by issues in geometry and electron density. Residues are color-coded according to the number of geometric quality criteria for which they contain at least one outlier: green = 0, yellow = 1, orange = 2 and red = 3 or more. A red dot above a residue indicates a poor fit to the electron density ($RSRZ > 2$). Stretches of 2 or more consecutive residues without any outlier are shown as a green connector. Residues present in the sample, but not in the model, are shown in grey.

• Molecule 1: Methionine aminopeptidase 2



4 Data and refinement statistics

Property	Value	Source
Space group	C 2 2 21	Depositor
Cell constants a, b, c, α , β , γ	89.62Å 101.18Å 100.28Å 90.00° 90.00° 90.00°	Depositor
Resolution (Å)	55.82 – 1.75 55.76 – 1.75	Depositor EDS
% Data completeness (in resolution range)	99.5 (55.82-1.75) 99.5 (55.76-1.75)	Depositor EDS
R_{merge}	0.05	Depositor
R_{sym}	(Not available)	Depositor
$\langle I/\sigma(I) \rangle$ ¹	2.16 (at 1.75Å)	Xtriage
Refinement program	REFMAC 5.7.0032	Depositor
R, R_{free}	0.160 , 0.189 0.237 , 0.247	Depositor DCC
R_{free} test set	1425 reflections (3.10%)	DCC
Wilson B-factor (Å ²)	25.9	Xtriage
Anisotropy	0.607	Xtriage
Bulk solvent k_{sol} (e/Å ³), B_{sol} (Å ²)	0.38 , 55.1	EDS
L-test for twinning ²	$\langle L \rangle = 0.49$, $\langle L^2 \rangle = 0.32$	Xtriage
Estimated twinning fraction	No twinning to report.	Xtriage
F_o, F_c correlation	0.95	EDS
Total number of atoms	3351	wwPDB-VP
Average B, all atoms (Å ²)	23.0	wwPDB-VP

Xtriage's analysis on translational NCS is as follows: *The largest off-origin peak in the Patterson function is 4.58% of the height of the origin peak. No significant pseudotranslation is detected.*

¹Intensities estimated from amplitudes.

²Theoretical values of $\langle |L| \rangle$, $\langle L^2 \rangle$ for acentric reflections are 0.5, 0.333 respectively for untwinned datasets, and 0.375, 0.2 for perfectly twinned datasets.

5 Model quality [i](#)

5.1 Standard geometry [i](#)

Bond lengths and bond angles in the following residue types are not validated in this section: GOL, CO, CL, 52T, DMS, CIT

The Z score for a bond length (or angle) is the number of standard deviations the observed value is removed from the expected value. A bond length (or angle) with $|Z| > 5$ is considered an outlier worth inspection. RMSZ is the root-mean-square of all Z scores of the bond lengths (or angles).

Mol	Chain	Bond lengths		Bond angles	
		RMSZ	$\# Z > 5$	RMSZ	$\# Z > 5$
1	A	0.97	1/3039 (0.0%)	1.02	7/4112 (0.2%)

All (1) bond length outliers are listed below:

Mol	Chain	Res	Type	Atoms	Z	Observed(Å)	Ideal(Å)
1	A	383	TYR	CE1-CZ	-5.57	1.31	1.38

All (7) bond angle outliers are listed below:

Mol	Chain	Res	Type	Atoms	Z	Observed(°)	Ideal(°)
1	A	422	ARG	NE-CZ-NH2	-7.00	116.80	120.30
1	A	422	ARG	NE-CZ-NH1	6.94	123.77	120.30
1	A	246	ASP	CB-CG-OD1	6.34	124.01	118.30
1	A	415	PHE	CB-CG-CD2	6.14	125.10	120.80
1	A	398	ARG	NE-CZ-NH2	-5.58	117.51	120.30
1	A	177	ARG	NE-CZ-NH1	5.46	123.03	120.30
1	A	202	ASP	CB-CG-OD1	5.01	122.81	118.30

There are no chirality outliers.

There are no planarity outliers.

5.2 Too-close contacts [i](#)

In the following table, the Non-H and H(model) columns list the number of non-hydrogen atoms and hydrogen atoms in the chain respectively. The H(added) column lists the number of hydrogen atoms added and optimized by MolProbity. The Clashes column lists the number of clashes within the asymmetric unit, whereas Symm-Clashes lists symmetry related clashes.

Mol	Chain	Non-H	H(model)	H(added)	Clashes	Symm-Clashes
1	A	2946	0	2925	24	0
2	A	1	0	0	0	0
3	A	16	0	24	2	0
4	A	18	0	24	0	0
5	A	27	0	25	2	0
6	A	13	0	5	2	0
7	A	1	0	0	0	0
8	A	329	0	0	8	0
All	All	3351	0	3003	29	0

The all-atom clashscore is defined as the number of clashes found per 1000 atoms (including hydrogen atoms). The all-atom clashscore for this structure is 5.

All (29) close contacts within the same asymmetric unit are listed below, sorted by their clash magnitude.

Atom-1	Atom-2	Interatomic distance (Å)	Clash overlap (Å)
1:A:205[B]:ARG:NH2	8:A:604:HOH:O	1.62	1.26
1:A:339:HIS:HE1	1:A:343:THR:HG22	1.46	0.80
1:A:282:ASP:O	1:A:286:THR:HG23	1.86	0.76
1:A:329:ASN:HD22	1:A:345:PRO:HA	1.50	0.75
1:A:147:ALA:O	1:A:150:THR:HG23	1.88	0.73
1:A:304:ILE:HG21	1:A:346:ILE:HG23	1.74	0.69
1:A:324:PRO:HB3	1:A:346:ILE:HG22	1.76	0.66
1:A:339:HIS:CE1	1:A:343:THR:HG22	2.30	0.64
1:A:184[A]:MET:SD	8:A:659:HOH:O	2.56	0.62
1:A:346:ILE:HG13	8:A:808:HOH:O	2.01	0.60
1:A:329:ASN:ND2	1:A:345:PRO:HA	2.20	0.56
3:A:502[B]:DMS:H11	8:A:621:HOH:O	2.09	0.51
1:A:138:PRO:HB3	8:A:830:HOH:O	2.13	0.49
1:A:436:CYS:HA	1:A:441:VAL:O	2.12	0.49
3:A:503[B]:DMS:H22	8:A:661:HOH:O	2.13	0.47
1:A:262:ASP:OD2	1:A:338[A]:ILE:HD11	2.17	0.44
5:A:506:52T:C6	5:A:506:52T:H18	2.48	0.44
1:A:176:HIS:CE1	1:A:263:CYS:HB3	2.53	0.44
6:A:507:CIT:O4	6:A:507:CIT:H21	2.18	0.43
1:A:324:PRO:CB	1:A:346:ILE:HG22	2.45	0.43
1:A:214:ASN:ND2	8:A:606:HOH:O	2.31	0.43
1:A:249:LYS:HD3	1:A:249:LYS:N	2.33	0.42
1:A:153:GLU:HA	1:A:153:GLU:OE1	2.19	0.42
1:A:325:ILE:HD12	1:A:366:PHE:HB3	2.01	0.42
1:A:201:GLU:O	1:A:205[A]:ARG:HG3	2.20	0.41
1:A:391:HIS:HE2	6:A:507:CIT:C1	2.33	0.41

Continued on next page...

Continued from previous page...

Atom-1	Atom-2	Interatomic distance (Å)	Clash overlap (Å)
1:A:376:ASP:OD1	8:A:605:HOH:O	2.22	0.41
1:A:275[B]:THR:HG22	1:A:313:VAL:HG12	2.03	0.41
5:A:506:52T:H18	5:A:506:52T:C5	2.52	0.40

There are no symmetry-related clashes.

5.3 Torsion angles [i](#)

5.3.1 Protein backbone [i](#)

In the following table, the Percentiles column shows the percent Ramachandran outliers of the chain as a percentile score with respect to all X-ray entries followed by that with respect to entries of similar resolution.

The Analysed column shows the number of residues for which the backbone conformation was analysed, and the total number of residues.

Mol	Chain	Analysed	Favoured	Allowed	Outliers	Percentiles
1	A	377/371 (102%)	369 (98%)	8 (2%)	0	100 100

There are no Ramachandran outliers to report.

5.3.2 Protein sidechains [i](#)

In the following table, the Percentiles column shows the percent sidechain outliers of the chain as a percentile score with respect to all X-ray entries followed by that with respect to entries of similar resolution.

The Analysed column shows the number of residues for which the sidechain conformation was analysed, and the total number of residues.

Mol	Chain	Analysed	Rotameric	Outliers	Percentiles
1	A	327/318 (103%)	322 (98%)	5 (2%)	70 53

All (5) residues with a non-rotameric sidechain are listed below:

Mol	Chain	Res	Type
1	A	110	LYS
1	A	141	GLN
1	A	150	THR

Continued on next page...

Continued from previous page...

Mol	Chain	Res	Type
1	A	347	VAL
1	A	353	THR

Some sidechains can be flipped to improve hydrogen bonding and reduce clashes. All (2) such sidechains are listed below:

Mol	Chain	Res	Type
1	A	141	GLN
1	A	339	HIS

5.3.3 RNA [i](#)

There are no RNA molecules in this entry.

5.4 Non-standard residues in protein, DNA, RNA chains [i](#)

There are no non-standard protein/DNA/RNA residues in this entry.

5.5 Carbohydrates [i](#)

There are no carbohydrates in this entry.

5.6 Ligand geometry [i](#)

Of 11 ligands modelled in this entry, 2 are monoatomic - leaving 9 for Mogul analysis.

In the following table, the Counts columns list the number of bonds (or angles) for which Mogul statistics could be retrieved, the number of bonds (or angles) that are observed in the model and the number of bonds (or angles) that are defined in the chemical component dictionary. The Link column lists molecule types, if any, to which the group is linked. The Z score for a bond length (or angle) is the number of standard deviations the observed value is removed from the expected value. A bond length (or angle) with $|Z| > 2$ is considered an outlier worth inspection. RMSZ is the root-mean-square of all Z scores of the bond lengths (or angles).

Mol	Type	Chain	Res	Link	Bond lengths			Bond angles		
					Counts	RMSZ	$\# Z > 2$	Counts	RMSZ	$\# Z > 2$
3	DMS	A	502[A]	-	3,3,3	0.82	0	3,3,3	0.73	0
3	DMS	A	502[B]	-	3,3,3	0.80	0	3,3,3	0.76	0
3	DMS	A	503[A]	-	3,3,3	0.66	0	3,3,3	0.48	0
3	DMS	A	503[B]	-	3,3,3	0.64	0	3,3,3	0.51	0
4	GOL	A	504[A]	-	5,5,5	0.62	0	5,5,5	0.82	0

Mol	Type	Chain	Res	Link	Bond lengths			Bond angles		
					Counts	RMSZ	# Z > 2	Counts	RMSZ	# Z > 2
4	GOL	A	504[B]	-	5,5,5	0.65	0	5,5,5	1.22	1 (20%)
4	GOL	A	505	-	5,5,5	0.50	0	5,5,5	0.75	0
5	52T	A	506	1	25,29,29	2.04	7 (28%)	29,42,42	2.13	9 (31%)
6	CIT	A	507	-	3,12,12	1.08	0	3,17,17	3.96	2 (66%)

In the following table, the Chirals column lists the number of chiral outliers, the number of chiral centers analysed, the number of these observed in the model and the number defined in the chemical component dictionary. Similar counts are reported in the Torsion and Rings columns. '-' means no outliers of that kind were identified.

Mol	Type	Chain	Res	Link	Chirals	Torsions	Rings
3	DMS	A	502[A]	-	-	0/0/0/0	0/0/0/0
3	DMS	A	502[B]	-	-	0/0/0/0	0/0/0/0
3	DMS	A	503[A]	-	-	0/0/0/0	0/0/0/0
3	DMS	A	503[B]	-	-	0/0/0/0	0/0/0/0
4	GOL	A	504[A]	-	-	0/4/4/4	0/0/0/0
4	GOL	A	504[B]	-	-	0/4/4/4	0/0/0/0
4	GOL	A	505	-	-	0/4/4/4	0/0/0/0
5	52T	A	506	1	-	0/14/30/30	0/3/3/3
6	CIT	A	507	-	-	0/6/16/16	0/0/0/0

All (7) bond length outliers are listed below:

Mol	Chain	Res	Type	Atoms	Z	Observed(Å)	Ideal(Å)
5	A	506	52T	C11-N1	-3.84	1.31	1.37
5	A	506	52T	O2-C13	-2.40	1.43	1.46
5	A	506	52T	C9-C10	2.65	1.57	1.53
5	A	506	52T	C6-C7	2.92	1.44	1.38
5	A	506	52T	N2-N1	3.12	1.40	1.34
5	A	506	52T	N3-N2	4.15	1.40	1.34
5	A	506	52T	O2-C16	5.19	1.44	1.35

All (12) bond angle outliers are listed below:

Mol	Chain	Res	Type	Atoms	Z	Observed(°)	Ideal(°)
6	A	507	CIT	C3-C4-C5	-5.60	106.21	114.95
5	A	506	52T	O2-C16-O3	-5.48	116.16	124.51
5	A	506	52T	C8-N1-N2	-4.81	111.82	117.53
5	A	506	52T	C5-C8-N1	-4.36	106.33	112.58
6	A	507	CIT	C3-C2-C1	-3.86	108.91	114.95
4	A	504[B]	GOL	O2-C2-C3	-2.11	98.89	108.84

Continued on next page...

Continued from previous page...

Mol	Chain	Res	Type	Atoms	Z	Observed(°)	Ideal(°)
5	A	506	52T	C12-C11-N1	2.16	109.13	106.75
5	A	506	52T	C4-C3-C2	2.21	122.51	119.74
5	A	506	52T	O2-C13-C12	2.32	112.06	106.98
5	A	506	52T	O3-C16-N4	2.49	129.15	124.87
5	A	506	52T	O2-C16-N4	3.30	114.68	110.36
5	A	506	52T	O1-C10-C11	3.35	115.19	109.26

There are no chirality outliers.

There are no torsion outliers.

There are no ring outliers.

4 monomers are involved in 6 short contacts:

Mol	Chain	Res	Type	Clashes	Symm-Clashes
3	A	502[B]	DMS	1	0
3	A	503[B]	DMS	1	0
5	A	506	52T	2	0
6	A	507	CIT	2	0

5.7 Other polymers [i](#)

There are no such residues in this entry.

5.8 Polymer linkage issues [i](#)

There are no chain breaks in this entry.

6 Fit of model and data ⓘ

6.1 Protein, DNA and RNA chains ⓘ

In the following table, the column labelled ‘#RSRZ> 2’ contains the number (and percentage) of RSRZ outliers, followed by percent RSRZ outliers for the chain as percentile scores relative to all X-ray entries and entries of similar resolution. The OWAB column contains the minimum, median, 95th percentile and maximum values of the occupancy-weighted average B-factor per residue. The column labelled ‘Q< 0.9’ lists the number of (and percentage) of residues with an average occupancy less than 0.9.

Mol	Chain	Analysed	<RSRZ>	#RSRZ>2	OWAB(Å ²)	Q<0.9
1	A	369/371 (99%)	0.66	45 (12%) 5 7	10, 17, 39, 81	9 (2%)

All (45) RSRZ outliers are listed below:

Mol	Chain	Res	Type	RSRZ
1	A	346	ILE	8.3
1	A	349	GLY	5.2
1	A	144	ARG	5.0
1	A	141	GLN	4.3
1	A	347	VAL	4.0
1	A	157	ALA	4.0
1	A	161	ALA	4.0
1	A	352	ALA	3.9
1	A	148	TRP	3.9
1	A	140	THR	3.7
1	A	466	PRO	3.6
1	A	350	GLY	3.5
1	A	351	GLU	3.4
1	A	348	LYS	3.3
1	A	297	LEU	3.0
1	A	154	GLU	2.9
1	A	151	THR	2.9
1	A	125	PRO	2.9
1	A	146	ALA	2.9
1	A	145	THR	2.8
1	A	139	PRO	2.8
1	A	291	ALA	2.8
1	A	355	MET	2.7
1	A	298	CYS	2.7
1	A	468	CYS	2.6
1	A	389	VAL	2.6
1	A	124	TYR	2.5

Continued on next page...

Continued from previous page...

Mol	Chain	Res	Type	RSRZ
1	A	158	LEU	2.5
1	A	153	GLU	2.4
1	A	358	GLY	2.4
1	A	159	ASP	2.3
1	A	111	VAL	2.3
1	A	142	ASP	2.2
1	A	150	THR	2.1
1	A	354	ARG	2.1
1	A	373	VAL	2.1
1	A	126[A]	ASN	2.1
1	A	344	VAL	2.1
1	A	135	CYS	2.1
1	A	223	CYS	2.1
1	A	137	TYR	2.0
1	A	292	GLY	2.0
1	A	290	CYS	2.0
1	A	299	ASP	2.0
1	A	300	VAL	2.0

6.2 Non-standard residues in protein, DNA, RNA chains [i](#)

There are no non-standard protein/DNA/RNA residues in this entry.

6.3 Carbohydrates [i](#)

There are no carbohydrates in this entry.

6.4 Ligands [i](#)

In the following table, the Atoms column lists the number of modelled atoms in the group and the number defined in the chemical component dictionary. LLDF column lists the quality of electron density of the group with respect to its neighbouring residues in protein, DNA or RNA chains. The B-factors column lists the minimum, median, 95th percentile and maximum values of B factors of atoms in the group. The column labelled 'Q < 0.9' lists the number of atoms with occupancy less than 0.9.

Mol	Type	Chain	Res	Atoms	RSCC	RSR	LLDF	B-factors(Å ²)	Q<0.9
4	GOL	A	505	6/6	0.88	0.21	3.43	48,56,58,67	0
6	CIT	A	507	13/13	0.77	0.17	2.04	59,75,90,91	0
4	GOL	A	504[B]	6/6	0.85	0.19	1.21	42,52,59,65	6

Continued on next page...

Continued from previous page...

Mol	Type	Chain	Res	Atoms	RSCC	RSR	LLDF	B-factors(\AA^2)	Q<0.9
4	GOL	A	504[A]	6/6	0.85	0.19	1.21	29,30,32,32	6
2	CO	A	501	1/1	0.94	0.12	0.97	39,39,39,39	1
5	52T	A	506	27/27	0.92	0.13	0.63	28,38,69,73	0
7	CL	A	508	1/1	0.92	0.11	-	58,58,58,58	0
3	DMS	A	503[A]	4/4	0.80	0.19	-	59,63,66,76	4
3	DMS	A	502[A]	4/4	0.91	0.17	-	92,94,97,99	4
3	DMS	A	503[B]	4/4	0.80	0.19	-	72,73,77,82	4
3	DMS	A	502[B]	4/4	0.91	0.17	-	60,63,65,65	4

6.5 Other polymers [i](#)

There are no such residues in this entry.