



# Full wwPDB X-ray Structure Validation Report ⓘ

Feb 14, 2017 – 06:22 pm GMT

PDB ID : 4CM4  
Title : Crystal structure of pteridine reductase 1 (PTR1) from Trypanosoma brucei  
in ternary complex with cofactor and inhibitor  
Authors : Barrack, K.L.; Hunter, W.N.  
Deposited on : 2014-01-15  
Resolution : 1.81 Å(reported)

This is a Full wwPDB X-ray Structure Validation Report for a publicly released PDB entry.

We welcome your comments at [validation@mail.wwpdb.org](mailto:validation@mail.wwpdb.org)

A user guide is available at

<http://wwpdb.org/validation/2016/XrayValidationReportHelp>

with specific help available everywhere you see the ⓘ symbol.

---

The following versions of software and data (see [references ⓘ](#)) were used in the production of this report:

MolProbity : 4.02b-467  
Mogul : 1.7.2 (RC1), CSD as538be (2017)  
Xtriage (Phenix) : 1.9-1692  
EDS : trunk28620  
Percentile statistics : 20161228.v01 (using entries in the PDB archive December 28th 2016)  
Refmac : 5.8.0135  
CCP4 : 6.5.0  
Ideal geometry (proteins) : Engh & Huber (2001)  
Ideal geometry (DNA, RNA) : Parkinson et al. (1996)  
Validation Pipeline (wwPDB-VP) : recalc28949

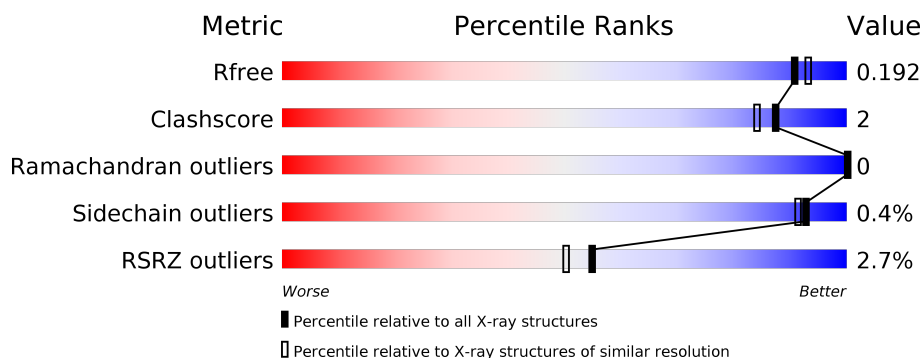
# 1 Overall quality at a glance

The following experimental techniques were used to determine the structure:

*X-RAY DIFFRACTION*

The reported resolution of this entry is 1.81 Å.

Percentile scores (ranging between 0-100) for global validation metrics of the entry are shown in the following graphic. The table shows the number of entries on which the scores are based.



Metric	Whole archive (#Entries)	Similar resolution (#Entries, resolution range(Å))
$R_{free}$	100719	5868 (1.84-1.80)
Clashscore	112137	6856 (1.84-1.80)
Ramachandran outliers	110173	6780 (1.84-1.80)
Sidechain outliers	110143	6780 (1.84-1.80)
RSRZ outliers	101464	5947 (1.84-1.80)

The table below summarises the geometric issues observed across the polymeric chains and their fit to the electron density. The red, orange, yellow and green segments on the lower bar indicate the fraction of residues that contain outliers for  $\geq 3$ , 2, 1 and 0 types of geometric quality criteria. A grey segment represents the fraction of residues that are not modelled. The numeric value for each fraction is indicated below the corresponding segment, with a dot representing fractions  $\leq 5\%$ . The upper red bar (where present) indicates the fraction of residues that have poor fit to the electron density. The numeric value is given above the bar.

Mol	Chain	Length	Quality of chain
1	A	288	<div> <div>2%</div> <div> <div></div> <div>82%</div> <div>5%</div> <div>13%</div> </div> </div>
2	B	288	<div> <div>2%</div> <div> <div></div> <div>81%</div> <div>7%</div> <div>13%</div> </div> </div>
2	C	288	<div> <div>3%</div> <div> <div></div> <div>81%</div> <div>6%</div> <div>13%</div> </div> </div>
2	D	288	<div> <div>3%</div> <div> <div></div> <div>81%</div> <div>6%</div> <div>13%</div> </div> </div>

The following table lists non-polymeric compounds, carbohydrate monomers and non-standard residues in protein, DNA, RNA chains that are outliers for geometric or electron-density-fit crite-

ria:

Mol	Type	Chain	Res	Chirality	Geometry	Clashes	Electron density
4	4NR	C	1270	-	-	-	X
6	ACT	B	1272	-	-	-	X

## 2 Entry composition

There are 7 unique types of molecules in this entry. The entry contains 8522 atoms, of which 0 are hydrogens and 0 are deuteriums.

In the tables below, the ZeroOcc column contains the number of atoms modelled with zero occupancy, the AltConf column contains the number of residues with at least one atom in alternate conformation and the Trace column contains the number of residues modelled with at most 2 atoms.

- Molecule 1 is a protein called PTERIDINE REDUCTASE 1.

Mol	Chain	Residues	Atoms					ZeroOcc	AltConf	Trace
			Total	C	N	O	S			
1	A	251	1884	1182	333	358	11	0	3	0

There are 20 discrepancies between the modelled and reference sequences:

Chain	Residue	Modelled	Actual	Comment	Reference
A	-19	MET	-	EXPRESSION TAG	UNP O76290
A	-18	GLY	-	EXPRESSION TAG	UNP O76290
A	-17	SER	-	EXPRESSION TAG	UNP O76290
A	-16	SER	-	EXPRESSION TAG	UNP O76290
A	-15	HIS	-	EXPRESSION TAG	UNP O76290
A	-14	HIS	-	EXPRESSION TAG	UNP O76290
A	-13	HIS	-	EXPRESSION TAG	UNP O76290
A	-12	HIS	-	EXPRESSION TAG	UNP O76290
A	-11	HIS	-	EXPRESSION TAG	UNP O76290
A	-10	HIS	-	EXPRESSION TAG	UNP O76290
A	-9	SER	-	EXPRESSION TAG	UNP O76290
A	-8	SER	-	EXPRESSION TAG	UNP O76290
A	-7	GLY	-	EXPRESSION TAG	UNP O76290
A	-6	LEU	-	EXPRESSION TAG	UNP O76290
A	-5	VAL	-	EXPRESSION TAG	UNP O76290
A	-4	PRO	-	EXPRESSION TAG	UNP O76290
A	-3	ARG	-	EXPRESSION TAG	UNP O76290
A	-2	GLY	-	EXPRESSION TAG	UNP O76290
A	-1	SER	-	EXPRESSION TAG	UNP O76290
A	0	HIS	-	EXPRESSION TAG	UNP O76290

- Molecule 2 is a protein called PTERIDINE REDUCTASE 1.

Mol	Chain	Residues	Atoms					ZeroOcc	AltConf	Trace
			Total	C	N	O	S			
2	B	251	1885	1186	331	357	11	0	3	0

*Continued on next page...*

*Continued from previous page...*

Mol	Chain	Residues	Atoms					ZeroOcc	AltConf	Trace
2	C	251	Total	C	N	O	S	0	4	0
			1889	1186	333	359	11			
2	D	250	Total	C	N	O	S	0	2	0
			1868	1174	328	354	12			

There are 60 discrepancies between the modelled and reference sequences:

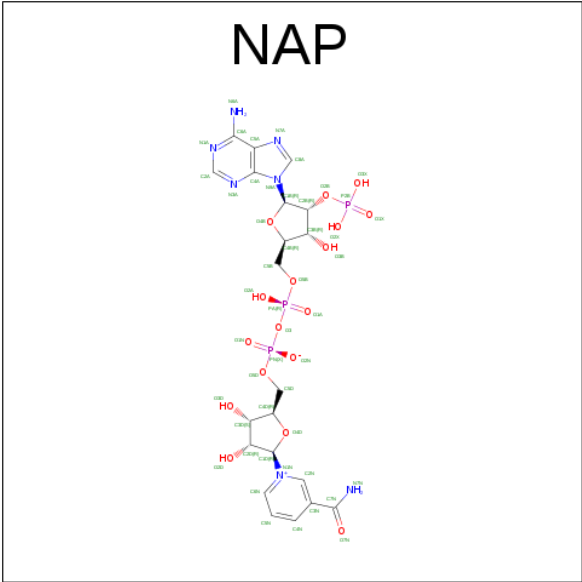
Chain	Residue	Modelled	Actual	Comment	Reference
B	-19	MET	-	EXPRESSION TAG	UNP O76290
B	-18	GLY	-	EXPRESSION TAG	UNP O76290
B	-17	SER	-	EXPRESSION TAG	UNP O76290
B	-16	SER	-	EXPRESSION TAG	UNP O76290
B	-15	HIS	-	EXPRESSION TAG	UNP O76290
B	-14	HIS	-	EXPRESSION TAG	UNP O76290
B	-13	HIS	-	EXPRESSION TAG	UNP O76290
B	-12	HIS	-	EXPRESSION TAG	UNP O76290
B	-11	HIS	-	EXPRESSION TAG	UNP O76290
B	-10	HIS	-	EXPRESSION TAG	UNP O76290
B	-9	SER	-	EXPRESSION TAG	UNP O76290
B	-8	SER	-	EXPRESSION TAG	UNP O76290
B	-7	GLY	-	EXPRESSION TAG	UNP O76290
B	-6	LEU	-	EXPRESSION TAG	UNP O76290
B	-5	VAL	-	EXPRESSION TAG	UNP O76290
B	-4	PRO	-	EXPRESSION TAG	UNP O76290
B	-3	ARG	-	EXPRESSION TAG	UNP O76290
B	-2	GLY	-	EXPRESSION TAG	UNP O76290
B	-1	SER	-	EXPRESSION TAG	UNP O76290
B	0	HIS	-	EXPRESSION TAG	UNP O76290
C	-19	MET	-	EXPRESSION TAG	UNP O76290
C	-18	GLY	-	EXPRESSION TAG	UNP O76290
C	-17	SER	-	EXPRESSION TAG	UNP O76290
C	-16	SER	-	EXPRESSION TAG	UNP O76290
C	-15	HIS	-	EXPRESSION TAG	UNP O76290
C	-14	HIS	-	EXPRESSION TAG	UNP O76290
C	-13	HIS	-	EXPRESSION TAG	UNP O76290
C	-12	HIS	-	EXPRESSION TAG	UNP O76290
C	-11	HIS	-	EXPRESSION TAG	UNP O76290
C	-10	HIS	-	EXPRESSION TAG	UNP O76290
C	-9	SER	-	EXPRESSION TAG	UNP O76290
C	-8	SER	-	EXPRESSION TAG	UNP O76290
C	-7	GLY	-	EXPRESSION TAG	UNP O76290
C	-6	LEU	-	EXPRESSION TAG	UNP O76290

*Continued on next page...*

*Continued from previous page...*

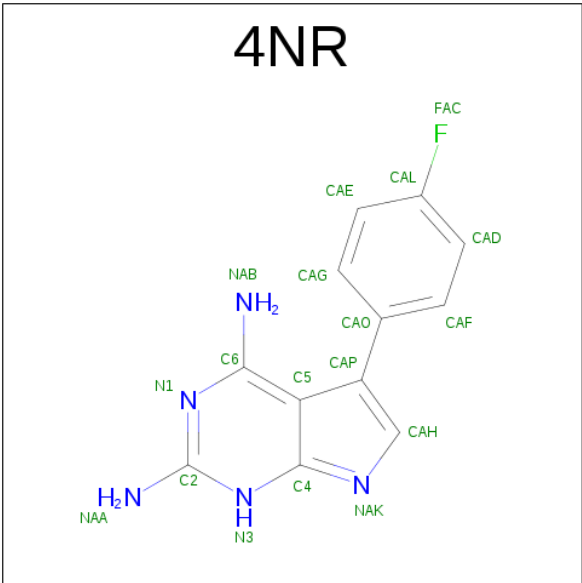
Chain	Residue	Modelled	Actual	Comment	Reference
C	-5	VAL	-	EXPRESSION TAG	UNP O76290
C	-4	PRO	-	EXPRESSION TAG	UNP O76290
C	-3	ARG	-	EXPRESSION TAG	UNP O76290
C	-2	GLY	-	EXPRESSION TAG	UNP O76290
C	-1	SER	-	EXPRESSION TAG	UNP O76290
C	0	HIS	-	EXPRESSION TAG	UNP O76290
D	-19	MET	-	EXPRESSION TAG	UNP O76290
D	-18	GLY	-	EXPRESSION TAG	UNP O76290
D	-17	SER	-	EXPRESSION TAG	UNP O76290
D	-16	SER	-	EXPRESSION TAG	UNP O76290
D	-15	HIS	-	EXPRESSION TAG	UNP O76290
D	-14	HIS	-	EXPRESSION TAG	UNP O76290
D	-13	HIS	-	EXPRESSION TAG	UNP O76290
D	-12	HIS	-	EXPRESSION TAG	UNP O76290
D	-11	HIS	-	EXPRESSION TAG	UNP O76290
D	-10	HIS	-	EXPRESSION TAG	UNP O76290
D	-9	SER	-	EXPRESSION TAG	UNP O76290
D	-8	SER	-	EXPRESSION TAG	UNP O76290
D	-7	GLY	-	EXPRESSION TAG	UNP O76290
D	-6	LEU	-	EXPRESSION TAG	UNP O76290
D	-5	VAL	-	EXPRESSION TAG	UNP O76290
D	-4	PRO	-	EXPRESSION TAG	UNP O76290
D	-3	ARG	-	EXPRESSION TAG	UNP O76290
D	-2	GLY	-	EXPRESSION TAG	UNP O76290
D	-1	SER	-	EXPRESSION TAG	UNP O76290
D	0	HIS	-	EXPRESSION TAG	UNP O76290

- Molecule 3 is NADP NICOTINAMIDE-ADENINE-DINUCLEOTIDE PHOSPHATE (three-letter code: NAP) (formula: C<sub>21</sub>H<sub>28</sub>N<sub>7</sub>O<sub>17</sub>P<sub>3</sub>).



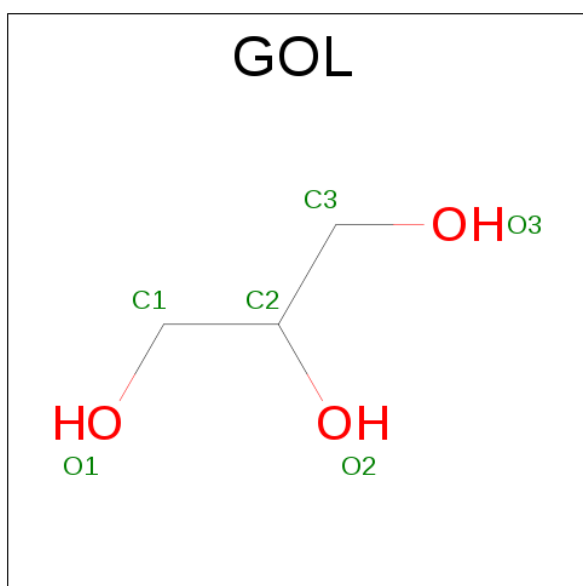
Mol	Chain	Residues	Atoms					ZeroOcc	AltConf
3	A	1	Total	C	N	O	P	0	0
			48	21	7	17	3		
3	B	1	Total	C	N	O	P	0	0
			48	21	7	17	3		
3	C	1	Total	C	N	O	P	0	0
			48	21	7	17	3		
3	D	1	Total	C	N	O	P	0	0
			48	21	7	17	3		

- Molecule 4 is 5-(4-FLUOROPHENYL)-7H-PYRROLO[2,3-D]PYRIMIDINE-2,4-DIAMINE (three-letter code: 4NR) (formula: C<sub>12</sub>H<sub>10</sub>FN<sub>5</sub>).



Mol	Chain	Residues	Atoms				ZeroOcc	AltConf
4	A	1	Total	C	F	N	0	0
			18	12	1	5		
4	B	1	Total	C	F	N	0	0
			18	12	1	5		
4	C	1	Total	C	F	N	0	0
			18	12	1	5		
4	D	1	Total	C	F	N	0	0
			18	12	1	5		

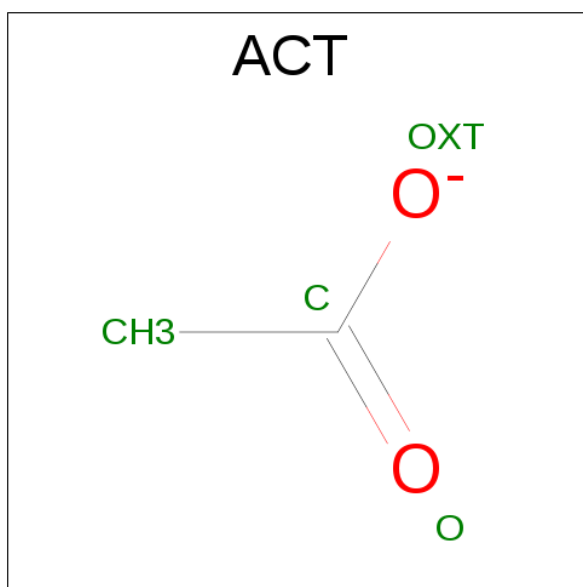
- Molecule 5 is GLYCEROL (three-letter code: GOL) (formula:  $C_3H_8O_3$ ).



Mol	Chain	Residues	Atoms			ZeroOcc	AltConf
5	A	1	Total	C	O	0	0
			6	3	3		

- Molecule 6 is ACETATE ION (three-letter code: ACT) (formula:  $C_2H_3O_2$ ).





Mol	Chain	Residues	Atoms			ZeroOcc	AltConf
6	B	1	Total	C	O	0	0
			4	2	2		
6	B	1	Total	C	O	0	0
			4	2	2		

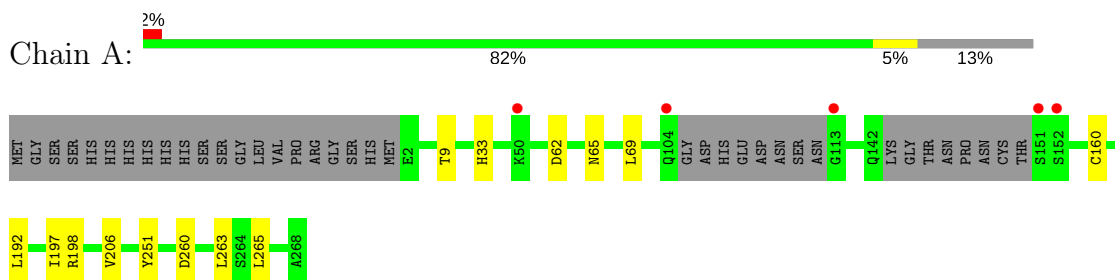
- Molecule 7 is water.

Mol	Chain	Residues	Atoms		ZeroOcc	AltConf
7	A	221	Total	O	0	0
			221	221		
7	B	201	Total	O	0	0
			201	201		
7	C	155	Total	O	0	0
			155	155		
7	D	141	Total	O	0	0
			141	141		

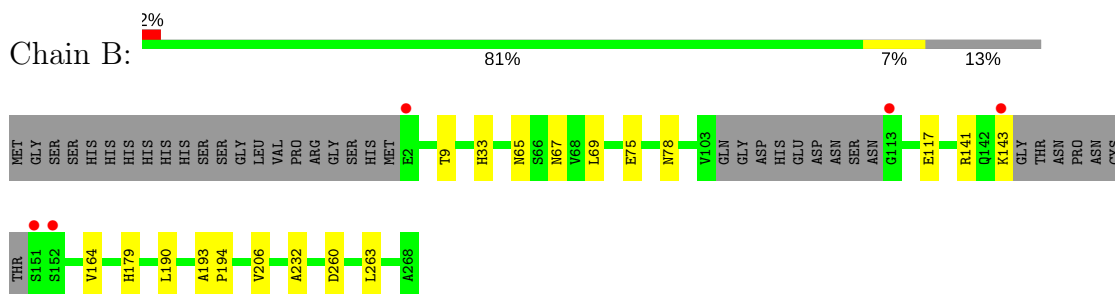
### 3 Residue-property plots [i](#)

These plots are drawn for all protein, RNA and DNA chains in the entry. The first graphic for a chain summarises the proportions of the various outlier classes displayed in the second graphic. The second graphic shows the sequence view annotated by issues in geometry and electron density. Residues are color-coded according to the number of geometric quality criteria for which they contain at least one outlier: green = 0, yellow = 1, orange = 2 and red = 3 or more. A red dot above a residue indicates a poor fit to the electron density ( $RSRZ > 2$ ). Stretches of 2 or more consecutive residues without any outlier are shown as a green connector. Residues present in the sample, but not in the model, are shown in grey.

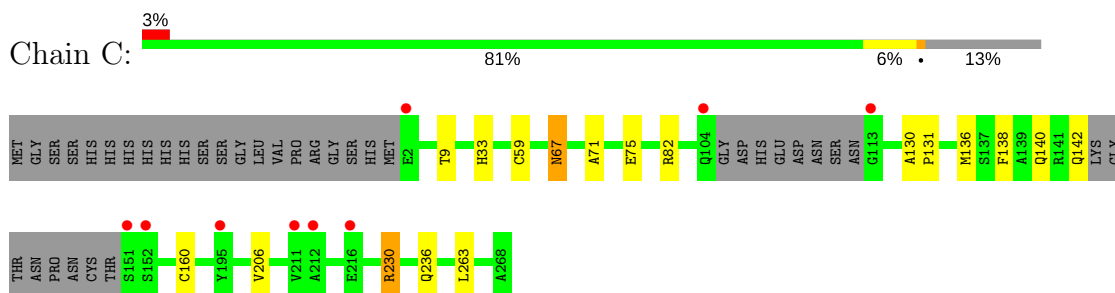
#### • Molecule 1: PTERIDINE REDUCTASE 1



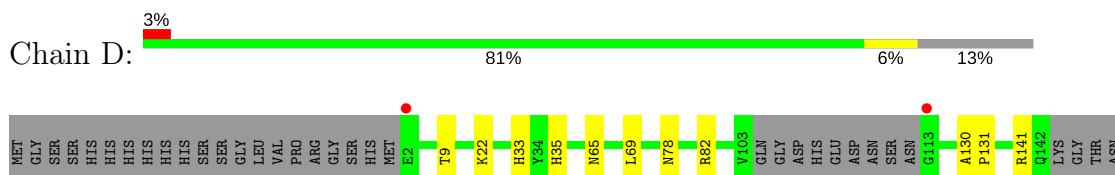
#### • Molecule 2: PTERIDINE REDUCTASE 1

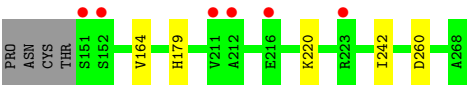


#### • Molecule 2: PTERIDINE REDUCTASE 1



#### • Molecule 2: PTERIDINE REDUCTASE 1





## 4 Data and refinement statistics

Property	Value	Source
Space group	P 1 21 1	Depositor
Cell constants a, b, c, $\alpha$ , $\beta$ , $\gamma$	74.67Å 89.71Å 82.73Å 90.00° 115.68° 90.00°	Depositor
Resolution (Å)	19.30 – 1.81 19.30 – 1.81	Depositor EDS
% Data completeness (in resolution range)	92.3 (19.30-1.81) 92.5 (19.30-1.81)	Depositor EDS
$R_{merge}$	0.04	Depositor
$R_{sym}$	(Not available)	Depositor
$\langle I/\sigma(I) \rangle$ <sup>1</sup>	4.23 (at 1.81Å)	Xtriage
Refinement program	REFMAC 5.7.0032	Depositor
R, $R_{free}$	0.146 , 0.182 0.160 , 0.192	Depositor DCC
$R_{free}$ test set	4146 reflections (5.25%)	DCC
Wilson B-factor (Å <sup>2</sup> )	15.5	Xtriage
Anisotropy	0.189	Xtriage
Bulk solvent $k_{sol}$ (e/Å <sup>3</sup> ), $B_{sol}$ (Å <sup>2</sup> )	0.40 , 50.7	EDS
L-test for twinning <sup>2</sup>	$\langle  L  \rangle = 0.50$ , $\langle L^2 \rangle = 0.33$	Xtriage
Estimated twinning fraction	0.015 for h,-k,-h-l	Xtriage
$F_o, F_c$ correlation	0.96	EDS
Total number of atoms	8522	wwPDB-VP
Average B, all atoms (Å <sup>2</sup> )	19.0	wwPDB-VP

Xtriage's analysis on translational NCS is as follows: *The analyses of the Patterson function reveals a significant off-origin peak that is 22.02 % of the origin peak, indicating pseudo translational symmetry. The chance of finding a peak of this or larger height randomly in a structure without pseudo translational symmetry is equal to 6.2096e-03. The detected translational NCS is most likely also responsible for the elevated intensity ratio.*

<sup>1</sup> Intensities estimated from amplitudes.

<sup>2</sup> Theoretical values of  $\langle |L| \rangle$ ,  $\langle L^2 \rangle$  for acentric reflections are 0.5, 0.333 respectively for untwinned datasets, and 0.375, 0.2 for perfectly twinned datasets.

## 5 Model quality [i](#)

### 5.1 Standard geometry [i](#)

Bond lengths and bond angles in the following residue types are not validated in this section: GOL, NAP, ACT, CSX, 4NR

The Z score for a bond length (or angle) is the number of standard deviations the observed value is removed from the expected value. A bond length (or angle) with  $|Z| > 5$  is considered an outlier worth inspection. RMSZ is the root-mean-square of all Z scores of the bond lengths (or angles).

Mol	Chain	Bond lengths		Bond angles	
		RMSZ	$\# Z  > 5$	RMSZ	$\# Z  > 5$
1	A	0.66	0/1912	0.77	5/2591 (0.2%)
2	B	0.70	0/1921	0.76	1/2605 (0.0%)
2	C	0.60	0/1928	0.72	1/2614 (0.0%)
2	D	0.64	0/1901	0.75	3/2578 (0.1%)
All	All	0.65	0/7662	0.75	10/10388 (0.1%)

There are no bond length outliers.

All (10) bond angle outliers are listed below:

Mol	Chain	Res	Type	Atoms	Z	Observed(°)	Ideal(°)
1	A	260	ASP	CB-CG-OD1	5.97	123.67	118.30
1	A	198	ARG	NE-CZ-NH2	-5.73	117.44	120.30
2	D	260	ASP	CB-CG-OD1	5.60	123.34	118.30
2	B	260	ASP	CB-CG-OD1	5.35	123.11	118.30
1	A	62	ASP	CB-CG-OD1	5.34	123.11	118.30
2	C	230	ARG	NE-CZ-NH1	5.28	122.94	120.30
2	D	82	ARG	NE-CZ-NH1	5.28	122.94	120.30
1	A	260	ASP	CB-CG-OD2	-5.18	113.64	118.30
1	A	198	ARG	NE-CZ-NH1	5.09	122.85	120.30
2	D	260	ASP	CB-CG-OD2	-5.06	113.74	118.30

There are no chirality outliers.

There are no planarity outliers.

### 5.2 Too-close contacts [i](#)

In the following table, the Non-H and H(model) columns list the number of non-hydrogen atoms and hydrogen atoms in the chain respectively. The H(added) column lists the number of hydrogen

atoms added and optimized by MolProbity. The Clashes column lists the number of clashes within the asymmetric unit, whereas Symm-Clashes lists symmetry related clashes.

Mol	Chain	Non-H	H(model)	H(added)	Clashes	Symm-Clashes
1	A	1884	0	1913	7	0
2	B	1885	0	1918	11	0
2	C	1889	0	1919	11	0
2	D	1868	0	1896	11	0
3	A	48	0	25	0	0
3	B	48	0	25	0	0
3	C	48	0	25	0	0
3	D	48	0	25	1	0
4	A	18	0	10	0	0
4	B	18	0	10	0	0
4	C	18	0	10	0	0
4	D	18	0	10	0	0
5	A	6	0	8	0	0
6	B	8	0	6	0	0
7	A	221	0	0	1	0
7	B	201	0	0	2	0
7	C	155	0	0	1	0
7	D	141	0	0	1	0
All	All	8522	0	7800	37	0

The all-atom clashscore is defined as the number of clashes found per 1000 atoms (including hydrogen atoms). The all-atom clashscore for this structure is 2.

All (37) close contacts within the same asymmetric unit are listed below, sorted by their clash magnitude.

Atom-1	Atom-2	Interatomic distance (Å)	Clash overlap (Å)
2:C:75[B]:GLU:OE2	2:C:82[B]:ARG:NH2	2.15	0.80
2:B:117[A]:GLU:OE1	7:B:2107:HOH:O	2.04	0.75
2:B:78:ASN:OD1	2:B:141:ARG:NH1	2.22	0.73
2:C:230:ARG:HH22	2:C:236:GLN:HE22	1.37	0.70
1:A:206:VAL:HG23	1:A:263:LEU:HD22	1.76	0.68
2:C:136:MET:O	2:C:140:GLN:HG2	1.94	0.67
2:C:160:CYS:HB3	7:C:2097:HOH:O	2.00	0.60
2:B:164:VAL:HG22	2:B:179:HIS:CD2	2.37	0.59
2:C:71:ALA:O	2:C:75[A]:GLU:HG2	2.03	0.59
2:B:206:VAL:HG23	2:B:263:LEU:HD22	1.84	0.59
2:D:22:LYS:HG2	2:D:242:ILE:HG13	1.85	0.57
2:D:78:ASN:OD1	2:D:141:ARG:NH1	2.36	0.56
2:D:164:VAL:HG22	2:D:179:HIS:CD2	2.41	0.56

*Continued on next page...*

Continued from previous page...

Atom-1	Atom-2	Interatomic distance (Å)	Clash overlap (Å)
1:A:265:LEU:HB2	2:B:190[B]:LEU:HD21	1.91	0.53
2:D:22:LYS:CG	2:D:242:ILE:HG13	2.39	0.52
2:B:117[A]:GLU:OE2	2:D:65:ASN:ND2	2.41	0.51
2:C:9:THR:HA	2:C:33:HIS:HB3	1.94	0.50
2:B:193:ALA:N	2:B:194:PRO:CD	2.76	0.48
2:D:9:THR:HA	2:D:33:HIS:HB3	1.94	0.48
2:D:22:LYS:HG2	2:D:242:ILE:CG1	2.45	0.47
1:A:65:ASN:HA	1:A:69:LEU:HD22	1.97	0.46
2:C:206:VAL:HG23	2:C:263:LEU:HD22	1.97	0.46
1:A:251:TYR:CE2	2:B:232:ALA:HB2	2.53	0.44
2:D:65:ASN:HA	2:D:69:LEU:HD22	1.99	0.43
1:A:160:CYS:HB3	7:A:2135:HOH:O	2.18	0.43
2:C:130:ALA:HB3	2:C:131:PRO:HD3	1.99	0.42
2:D:35:HIS:HB2	3:D:1269:NAP:C2A	2.49	0.42
2:C:138:PHE:O	2:C:142:GLN:HG2	2.18	0.42
2:B:65:ASN:HA	2:B:69:LEU:HD22	2.01	0.42
2:B:75:GLU:HG2	7:B:2085:HOH:O	2.19	0.42
2:B:9:THR:HA	2:B:33:HIS:HB3	2.02	0.42
1:A:9:THR:HA	1:A:33:HIS:HB3	2.02	0.41
1:A:192:LEU:HB3	1:A:197:ILE:HB	2.02	0.41
2:C:67:ASN:HD22	2:C:67:ASN:N	2.18	0.41
2:D:220:LYS:NZ	7:D:2120:HOH:O	2.52	0.41
2:D:130:ALA:HB3	2:D:131:PRO:HD3	2.02	0.41
2:C:33:HIS:HA	2:C:59:CYS:O	2.21	0.41

There are no symmetry-related clashes.

## 5.3 Torsion angles [i](#)

### 5.3.1 Protein backbone [i](#)

In the following table, the Percentiles column shows the percent Ramachandran outliers of the chain as a percentile score with respect to all X-ray entries followed by that with respect to entries of similar resolution.

The Analysed column shows the number of residues for which the backbone conformation was analysed, and the total number of residues.

Mol	Chain	Analysed	Favoured	Allowed	Outliers	Percentiles
1	A	247/288 (86%)	240 (97%)	7 (3%)	0	<b>100</b> <b>100</b>

Continued on next page...

*Continued from previous page...*

Mol	Chain	Analysed	Favoured	Allowed	Outliers	Percentiles	
2	B	248/288 (86%)	240 (97%)	8 (3%)	0	100	100
2	C	249/288 (86%)	241 (97%)	8 (3%)	0	100	100
2	D	246/288 (85%)	238 (97%)	8 (3%)	0	100	100
All	All	990/1152 (86%)	959 (97%)	31 (3%)	0	100	100

There are no Ramachandran outliers to report.

### 5.3.2 Protein sidechains ⓘ

In the following table, the Percentiles column shows the percent sidechain outliers of the chain as a percentile score with respect to all X-ray entries followed by that with respect to entries of similar resolution.

The Analysed column shows the number of residues for which the sidechain conformation was analysed, and the total number of residues.

Mol	Chain	Analysed	Rotameric	Outliers	Percentiles	
1	A	201/230 (87%)	201 (100%)	0	100	100
2	B	202/231 (87%)	199 (98%)	3 (2%)	70	60
2	C	203/231 (88%)	202 (100%)	1 (0%)	91	89
2	D	200/231 (87%)	200 (100%)	0	100	100
All	All	806/923 (87%)	802 (100%)	4 (0%)	93	89

All (4) residues with a non-rotameric sidechain are listed below:

Mol	Chain	Res	Type
2	B	67[A]	ASN
2	B	67[B]	ASN
2	B	143	LYS
2	C	67	ASN

Some sidechains can be flipped to improve hydrogen bonding and reduce clashes. All (6) such sidechains are listed below:

Mol	Chain	Res	Type
2	B	65	ASN
2	B	166	GLN
2	C	67	ASN
2	D	25	GLN

*Continued on next page...*



*Continued from previous page...*

Mol	Chain	Res	Type
2	D	67	ASN
2	D	166	GLN

### 5.3.3 RNA ⓘ

There are no RNA molecules in this entry.

## 5.4 Non-standard residues in protein, DNA, RNA chains ⓘ

1 non-standard protein/DNA/RNA residue is modelled in this entry.

In the following table, the Counts columns list the number of bonds (or angles) for which Mogul statistics could be retrieved, the number of bonds (or angles) that are observed in the model and the number of bonds (or angles) that are defined in the chemical component dictionary. The Link column lists molecule types, if any, to which the group is linked. The Z score for a bond length (or angle) is the number of standard deviations the observed value is removed from the expected value. A bond length (or angle) with  $|Z| > 2$  is considered an outlier worth inspection. RMSZ is the root-mean-square of all Z scores of the bond lengths (or angles).

Mol	Type	Chain	Res	Link	Bond lengths			Bond angles		
					Counts	RMSZ	$\# Z  > 2$	Counts	RMSZ	$\# Z  > 2$
1	CSX	A	168	1	4,6,7	0.69	0	2,6,8	0.57	0

In the following table, the Chirals column lists the number of chiral outliers, the number of chiral centers analysed, the number of these observed in the model and the number defined in the chemical component dictionary. Similar counts are reported in the Torsion and Rings columns. '-' means no outliers of that kind were identified.

Mol	Type	Chain	Res	Link	Chirals	Torsions	Rings
1	CSX	A	168	1	-	0/1/5/7	0/0/0/0

There are no bond length outliers.

There are no bond angle outliers.

There are no chirality outliers.

There are no torsion outliers.

There are no ring outliers.

No monomer is involved in short contacts.

## 5.5 Carbohydrates [i](#)

There are no carbohydrates in this entry.

## 5.6 Ligand geometry [i](#)

11 ligands are modelled in this entry.

In the following table, the Counts columns list the number of bonds (or angles) for which Mogul statistics could be retrieved, the number of bonds (or angles) that are observed in the model and the number of bonds (or angles) that are defined in the chemical component dictionary. The Link column lists molecule types, if any, to which the group is linked. The Z score for a bond length (or angle) is the number of standard deviations the observed value is removed from the expected value. A bond length (or angle) with  $|Z| > 2$  is considered an outlier worth inspection. RMSZ is the root-mean-square of all Z scores of the bond lengths (or angles).

Mol	Type	Chain	Res	Link	Bond lengths			Bond angles		
					Counts	RMSZ	# Z  > 2	Counts	RMSZ	# Z  > 2
3	NAP	A	1269	-	44,52,52	0.90	2 (4%)	51,80,80	1.86	9 (17%)
4	4NR	A	1270	-	19,20,20	2.05	2 (10%)	20,29,29	2.63	8 (40%)
5	GOL	A	1271	-	5,5,5	0.30	0	5,5,5	0.45	0
3	NAP	B	1269	-	44,52,52	0.80	1 (2%)	51,80,80	1.64	7 (13%)
4	4NR	B	1270	-	19,20,20	1.78	2 (10%)	20,29,29	2.31	6 (30%)
6	ACT	B	1271	-	1,3,3	0.77	0	0,3,3	0.00	-
6	ACT	B	1272	-	1,3,3	1.69	0	0,3,3	0.00	-
3	NAP	C	1269	-	44,52,52	1.00	3 (6%)	51,80,80	1.63	7 (13%)
4	4NR	C	1270	-	19,20,20	2.21	4 (21%)	20,29,29	2.48	5 (25%)
3	NAP	D	1269	-	44,52,52	1.07	2 (4%)	51,80,80	1.61	8 (15%)
4	4NR	D	1270	-	19,20,20	2.12	2 (10%)	20,29,29	2.22	4 (20%)

In the following table, the Chirals column lists the number of chiral outliers, the number of chiral centers analysed, the number of these observed in the model and the number defined in the chemical component dictionary. Similar counts are reported in the Torsion and Rings columns. '-' means no outliers of that kind were identified.

Mol	Type	Chain	Res	Link	Chirals	Torsions	Rings
3	NAP	A	1269	-	-	0/27/67/67	0/5/5/5
4	4NR	A	1270	-	-	0/4/4/4	0/3/3/3
5	GOL	A	1271	-	-	0/4/4/4	0/0/0/0
3	NAP	B	1269	-	-	0/27/67/67	0/5/5/5
4	4NR	B	1270	-	-	0/4/4/4	0/3/3/3
6	ACT	B	1271	-	-	0/0/0/0	0/0/0/0
6	ACT	B	1272	-	-	0/0/0/0	0/0/0/0

*Continued on next page...*

*Continued from previous page...*

Mol	Type	Chain	Res	Link	Chirals	Torsions	Rings
3	NAP	C	1269	-	-	0/27/67/67	0/5/5/5
4	4NR	C	1270	-	-	0/4/4/4	0/3/3/3
3	NAP	D	1269	-	-	0/27/67/67	0/5/5/5
4	4NR	D	1270	-	-	0/4/4/4	0/3/3/3

All (18) bond length outliers are listed below:

Mol	Chain	Res	Type	Atoms	Z	Observed(Å)	Ideal(Å)
4	C	1270	4NR	CAP-CAO	-7.61	1.35	1.49
4	A	1270	4NR	CAP-CAO	-7.02	1.36	1.49
4	D	1270	4NR	CAP-CAO	-6.51	1.37	1.49
4	B	1270	4NR	CAP-CAO	-6.23	1.38	1.49
4	C	1270	4NR	C4-N3	-2.22	1.32	1.36
4	C	1270	4NR	CAH-NAK	-2.10	1.32	1.36
3	C	1269	NAP	O4B-C4B	-2.01	1.40	1.45
4	B	1270	4NR	FAC-CAL	2.24	1.41	1.36
3	B	1269	NAP	C5A-C4A	2.36	1.45	1.40
3	C	1269	NAP	P2B-O2B	2.50	1.63	1.59
4	A	1270	4NR	FAC-CAL	2.60	1.42	1.36
3	A	1269	NAP	P2B-O2B	2.64	1.64	1.59
3	A	1269	NAP	C5A-C4A	2.72	1.46	1.40
4	C	1270	4NR	FAC-CAL	2.73	1.42	1.36
3	C	1269	NAP	C5A-C4A	2.88	1.47	1.40
3	D	1269	NAP	O4D-C1D	2.89	1.45	1.41
3	D	1269	NAP	P2B-O2B	4.03	1.66	1.59
4	D	1270	4NR	FAC-CAL	5.37	1.49	1.36

All (54) bond angle outliers are listed below:

Mol	Chain	Res	Type	Atoms	Z	Observed(°)	Ideal(°)
3	A	1269	NAP	N3A-C2A-N1A	-7.24	122.55	128.86
3	D	1269	NAP	N3A-C2A-N1A	-7.02	122.74	128.86
3	B	1269	NAP	N3A-C2A-N1A	-6.38	123.30	128.86
4	B	1270	4NR	N3-C2-N1	-5.93	118.81	127.46
4	D	1270	4NR	N3-C2-N1	-5.91	118.83	127.46
3	C	1269	NAP	N3A-C2A-N1A	-5.90	123.72	128.86
4	C	1270	4NR	CAP-C5-C4	-5.77	102.94	107.54
3	A	1269	NAP	C4B-O4B-C1B	-5.75	103.64	109.77
4	A	1270	4NR	N3-C2-N1	-5.57	119.32	127.46
4	C	1270	4NR	N3-C2-N1	-5.37	119.61	127.46
3	C	1269	NAP	C4B-O4B-C1B	-4.39	105.10	109.77
3	B	1269	NAP	O7N-C7N-C3N	-4.20	114.72	119.62

*Continued on next page...*

*Continued from previous page...*

Mol	Chain	Res	Type	Atoms	Z	Observed(°)	Ideal(°)
4	A	1270	4NR	CAP-C5-C4	-4.07	104.29	107.54
3	C	1269	NAP	O7N-C7N-C3N	-3.94	115.02	119.62
3	B	1269	NAP	C4B-O4B-C1B	-3.77	105.76	109.77
4	B	1270	4NR	CAG-CAO-CAP	-3.56	114.80	120.86
3	D	1269	NAP	C1B-N9A-C4A	-3.38	120.80	126.64
3	A	1269	NAP	C1B-N9A-C4A	-3.29	120.94	126.64
4	D	1270	4NR	CAE-CAL-CAD	-3.26	118.32	122.86
4	A	1270	4NR	C5-C6-NAB	-3.06	116.74	122.68
3	D	1269	NAP	C4B-O4B-C1B	-2.92	106.66	109.77
4	A	1270	4NR	CAG-CAO-CAP	-2.91	115.90	120.86
4	B	1270	4NR	CAP-C5-C4	-2.89	105.23	107.54
3	D	1269	NAP	O7N-C7N-C3N	-2.87	116.27	119.62
3	A	1269	NAP	C3N-C2N-N1N	-2.78	117.63	120.43
3	A	1269	NAP	C4A-C5A-N7A	-2.70	106.80	109.41
3	A	1269	NAP	O7N-C7N-C3N	-2.52	116.67	119.62
4	C	1270	4NR	CAE-CAL-CAD	-2.47	119.42	122.86
3	D	1269	NAP	C4A-C5A-N7A	-2.36	107.13	109.41
3	B	1269	NAP	C4A-C5A-N7A	-2.20	107.28	109.41
3	C	1269	NAP	C1B-N9A-C4A	-2.16	122.90	126.64
4	A	1270	4NR	CAE-CAL-CAD	-2.08	119.97	122.86
3	D	1269	NAP	O3X-P2B-O2X	2.01	115.72	107.61
3	B	1269	NAP	O2X-P2B-O1X	2.05	118.52	110.50
3	D	1269	NAP	O2N-PN-O1N	2.17	123.54	112.28
3	C	1269	NAP	N6A-C6A-N1A	2.24	123.20	118.77
3	C	1269	NAP	O2N-PN-O1N	2.38	124.61	112.28
3	A	1269	NAP	C2N-C3N-C4N	2.41	121.01	118.26
4	D	1270	4NR	FAC-CAL-CAE	2.42	122.76	118.53
3	A	1269	NAP	O3X-P2B-O2X	2.50	117.72	107.61
3	A	1269	NAP	N6A-C6A-N1A	2.53	123.79	118.77
3	B	1269	NAP	C2A-N1A-C6A	2.59	123.30	118.77
4	A	1270	4NR	CAF-CAO-CAP	2.71	125.47	120.86
4	B	1270	4NR	NAA-C2-N1	2.83	121.77	117.24
3	D	1269	NAP	C3N-C7N-N7N	3.12	121.34	117.77
4	B	1270	4NR	CAF-CAO-CAP	3.46	126.75	120.86
4	C	1270	4NR	NAA-C2-N1	3.71	123.18	117.24
3	B	1269	NAP	C3N-C7N-N7N	4.06	122.41	117.77
4	A	1270	4NR	NAA-C2-N1	4.23	124.01	117.24
4	B	1270	4NR	C2-N3-C4	4.28	120.16	115.16
3	C	1269	NAP	C3N-C7N-N7N	4.36	122.75	117.77
4	D	1270	4NR	C2-N3-C4	4.77	120.73	115.16
4	C	1270	4NR	C2-N3-C4	5.20	121.23	115.16
4	A	1270	4NR	C2-N3-C4	5.93	122.09	115.16

There are no chirality outliers.

There are no torsion outliers.

There are no ring outliers.

1 monomer is involved in 1 short contact:

Mol	Chain	Res	Type	Clashes	Symm-Clashes
3	D	1269	NAP	1	0

## 5.7 Other polymers [i](#)

There are no such residues in this entry.

## 5.8 Polymer linkage issues [i](#)

There are no chain breaks in this entry.

## 6 Fit of model and data

### 6.1 Protein, DNA and RNA chains

In the following table, the column labelled ‘#RSRZ > 2’ contains the number (and percentage) of RSRZ outliers, followed by percent RSRZ outliers for the chain as percentile scores relative to all X-ray entries and entries of similar resolution. The OWAB column contains the minimum, median, 95<sup>th</sup> percentile and maximum values of the occupancy-weighted average B-factor per residue. The column labelled ‘Q < 0.9’ lists the number of (and percentage) of residues with an average occupancy less than 0.9.

Mol	Chain	Analysed	<RSRZ>	#RSRZ>2	OWAB(Å <sup>2</sup> )	Q<0.9
1	A	250/288 (86%)	-0.40	5 (2%) 65 62	8, 14, 31, 61	0
2	B	251/288 (87%)	-0.42	5 (1%) 65 62	8, 14, 30, 63	0
2	C	251/288 (87%)	-0.27	9 (3%) 43 38	9, 17, 41, 60	0
2	D	250/288 (86%)	-0.23	8 (3%) 48 43	9, 17, 40, 62	0
All	All	1002/1152 (86%)	-0.33	27 (2%) 55 50	8, 16, 37, 63	0

All (27) RSRZ outliers are listed below:

Mol	Chain	Res	Type	RSRZ
2	D	211	VAL	7.4
2	D	151	SER	6.1
2	C	113	GLY	5.9
2	B	151	SER	5.8
2	B	113	GLY	5.1
2	D	113	GLY	5.0
1	A	151	SER	4.7
1	A	104	GLN	4.2
2	D	212	ALA	4.1
2	C	151	SER	3.8
2	B	143	LYS	3.8
2	C	104	GLN	3.6
2	D	216	GLU	3.5
2	C	211	VAL	3.5
2	C	2	GLU	3.3
1	A	113	GLY	3.2
2	D	2	GLU	3.1
2	C	212	ALA	3.0
2	C	152	SER	3.0
2	B	152	SER	2.7
2	B	2	GLU	2.5

*Continued on next page...*

*Continued from previous page...*

Mol	Chain	Res	Type	RSRZ
2	C	195	TYR	2.4
2	D	223	ARG	2.4
2	C	216	GLU	2.2
1	A	50	LYS	2.2
2	D	152	SER	2.1
1	A	152	SER	2.1

## 6.2 Non-standard residues in protein, DNA, RNA chains [i](#)

In the following table, the Atoms column lists the number of modelled atoms in the group and the number defined in the chemical component dictionary. LLDF column lists the quality of electron density of the group with respect to its neighbouring residues in protein, DNA or RNA chains. The B-factors column lists the minimum, median, 95<sup>th</sup> percentile and maximum values of B factors of atoms in the group. The column labelled 'Q< 0.9' lists the number of atoms with occupancy less than 0.9.

Mol	Type	Chain	Res	Atoms	RSCC	RSR	LLDF	B-factors(Å <sup>2</sup> )	Q<0.9
1	CSX	A	168	7/8	0.96	0.07	-	18,21,37,40	0

## 6.3 Carbohydrates [i](#)

There are no carbohydrates in this entry.

## 6.4 Ligands [i](#)

In the following table, the Atoms column lists the number of modelled atoms in the group and the number defined in the chemical component dictionary. LLDF column lists the quality of electron density of the group with respect to its neighbouring residues in protein, DNA or RNA chains. The B-factors column lists the minimum, median, 95<sup>th</sup> percentile and maximum values of B factors of atoms in the group. The column labelled 'Q< 0.9' lists the number of atoms with occupancy less than 0.9.

Mol	Type	Chain	Res	Atoms	RSCC	RSR	LLDF	B-factors(Å <sup>2</sup> )	Q<0.9
4	4NR	C	1270	18/18	0.92	0.12	2.74	14,21,37,41	0
6	ACT	B	1272	4/4	0.85	0.16	2.64	30,35,36,37	0
4	4NR	B	1270	18/18	0.92	0.11	1.97	11,16,25,29	0
5	GOL	A	1271	6/6	0.81	0.14	1.65	43,46,48,48	0
4	4NR	A	1270	18/18	0.93	0.10	1.57	12,19,28,31	0
4	4NR	D	1270	18/18	0.93	0.09	-0.43	15,18,31,34	0
6	ACT	B	1271	4/4	0.98	0.06	-0.74	16,16,16,18	0

*Continued on next page...*

*Continued from previous page...*

Mol	Type	Chain	Res	Atoms	RSCC	RSR	LLDF	B-factors( $\text{\AA}^2$ )	Q<0.9
3	NAP	D	1269	48/48	0.98	0.06	-0.94	11,14,18,21	0
3	NAP	C	1269	48/48	0.98	0.06	-1.00	11,13,16,17	0
3	NAP	A	1269	48/48	0.98	0.06	-1.08	9,12,13,14	0
3	NAP	B	1269	48/48	0.98	0.06	-1.21	8,12,13,13	0

## 6.5 Other polymers [i](#)

There are no such residues in this entry.