



# wwPDB X-ray Structure Validation Summary Report ⓘ

Mar 12, 2018 – 01:00 PM EDT

PDB ID : 6CMZ  
Title : 2.3 Angstrom Resolution Crystal Structure of Dihydrolipoamide Dehydrogenase from Burkholderia cenocepacia in Complex with FAD and NAD  
Authors : Minasov, G.; Shuvalova, L.; Dubrovskaya, I.; Kiryukhina, O.; Grimshaw, S.; Kwon, K.; Anderson, W.F.; Satchell, K.J.F.; Joachimiak, A.; Center for Structural Genomics of Infectious Diseases (CSGID)  
Deposited on : 2018-03-06  
Resolution : 2.30 Å(reported)

This is a wwPDB X-ray Structure Validation Summary Report for a publicly released PDB entry.

We welcome your comments at [validation@mail.wwpdb.org](mailto:validation@mail.wwpdb.org)

A user guide is available at

<http://wwpdb.org/validation/2016/XrayValidationReportHelp>

with specific help available everywhere you see the ⓘ symbol.

---

The following versions of software and data (see [references ⓘ](#)) were used in the production of this report:

MolProbity	:	4.02b-467
Mogul	:	1.7.2 (RC1), CSD as538be (2017)
Xtriage (Phenix)	:	1.9-1692
EDS	:	rb-20030736
Percentile statistics	:	20161228.v01 (using entries in the PDB archive December 28th 2016)
Refmac	:	5.8.0135
CCP4	:	6.5.0
Ideal geometry (proteins)	:	Engh & Huber (2001)
Ideal geometry (DNA, RNA)	:	Parkinson et al. (1996)
Validation Pipeline (wwPDB-VP)	:	rb-20030736

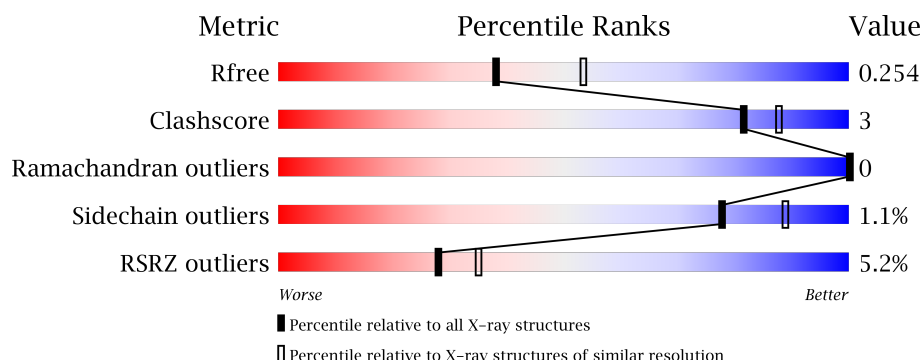
# 1 Overall quality at a glance

The following experimental techniques were used to determine the structure:

## *X-RAY DIFFRACTION*

The reported resolution of this entry is 2.30 Å.

Percentile scores (ranging between 0-100) for global validation metrics of the entry are shown in the following graphic. The table shows the number of entries on which the scores are based.



Metric	Whole archive (#Entries)	Similar resolution (#Entries, resolution range(Å))
$R_{free}$	100719	4130 (2.30-2.30)
Clashscore	112137	4751 (2.30-2.30)
Ramachandran outliers	110173	4705 (2.30-2.30)
Sidechain outliers	110143	4704 (2.30-2.30)
RSRZ outliers	101464	4156 (2.30-2.30)

The table below summarises the geometric issues observed across the polymeric chains and their fit to the electron density. The red, orange, yellow and green segments on the lower bar indicate the fraction of residues that contain outliers for  $\geq 3$ , 2, 1 and 0 types of geometric quality criteria. A grey segment represents the fraction of residues that are not modelled. The numeric value for each fraction is indicated below the corresponding segment, with a dot representing fractions  $\leq 5\%$ . The upper red bar (where present) indicates the fraction of residues that have poor fit to the electron density. The numeric value is given above the bar.

Mol	Chain	Length	Quality of chain
1	A	466	<div> <div>2%</div> <div> <div></div> <div>93%</div> <div>6%</div> <div>.</div> </div> </div>
1	B	466	<div> <div>6%</div> <div> <div></div> <div>93%</div> <div>6%</div> <div>.</div> </div> </div>
1	C	466	<div> <div>5%</div> <div> <div></div> <div>90%</div> <div>8%</div> <div>.</div> </div> </div>
1	D	466	<div> <div>8%</div> <div> <div></div> <div>90%</div> <div>8%</div> <div>.</div> </div> </div>

The following table lists non-polymeric compounds, carbohydrate monomers and non-standard residues in protein, DNA, RNA chains that are outliers for geometric or electron-density-fit crite-

ria:

Mol	Type	Chain	Res	Chirality	Geometry	Clashes	Electron density
4	NAD	A	504	-	-	-	X
5	FMN	A	505	-	-	-	X
6	ADP	B	502	-	-	-	X
7	MLT	D	501	-	-	-	X

## 2 Entry composition [i](#)

There are 8 unique types of molecules in this entry. The entry contains 14440 atoms, of which 0 are hydrogens and 0 are deuteriums.

In the tables below, the ZeroOcc column contains the number of atoms modelled with zero occupancy, the AltConf column contains the number of residues with at least one atom in alternate conformation and the Trace column contains the number of residues modelled with at most 2 atoms.

- Molecule 1 is a protein called Dihydrolipoyl dehydrogenase.

Mol	Chain	Residues	Atoms					ZeroOcc	AltConf	Trace
1	A	462	Total	C	N	O	S	0	4	0
			3442	2155	641	630	16			
1	B	459	Total	C	N	O	S	0	1	0
			3390	2122	633	619	16			
1	C	462	Total	C	N	O	S	0	1	0
			3416	2139	639	622	16			
1	D	459	Total	C	N	O	S	0	1	0
			3389	2122	633	617	17			

There are 12 discrepancies between the modelled and reference sequences:

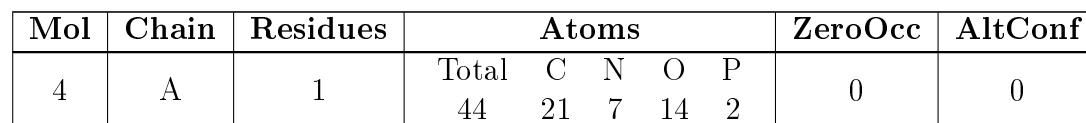
Chain	Residue	Modelled	Actual	Comment	Reference
A	-2	SER	-	expression tag	UNP B4EEF2
A	-1	ASN	-	expression tag	UNP B4EEF2
A	0	ALA	-	expression tag	UNP B4EEF2
B	-2	SER	-	expression tag	UNP B4EEF2
B	-1	ASN	-	expression tag	UNP B4EEF2
B	0	ALA	-	expression tag	UNP B4EEF2
C	-2	SER	-	expression tag	UNP B4EEF2
C	-1	ASN	-	expression tag	UNP B4EEF2
C	0	ALA	-	expression tag	UNP B4EEF2
D	-2	SER	-	expression tag	UNP B4EEF2
D	-1	ASN	-	expression tag	UNP B4EEF2
D	0	ALA	-	expression tag	UNP B4EEF2

- Molecule 2 is CHLORIDE ION (three-letter code: CL) (formula: Cl).

Mol	Chain	Residues	Atoms		ZeroOcc	AltConf
2	A	1	Total	Cl	0	0
			1	1		
2	C	1	Total	Cl	0	0
			1	1		

- # FAD

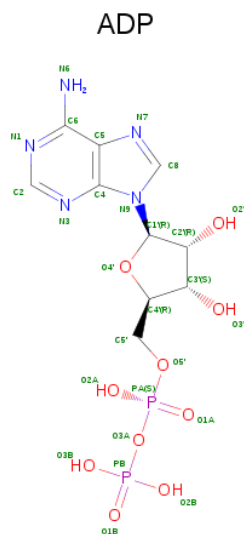
- Molecule 4 is NICOTINAMIDE-ADENINE-DINUCLEOTIDE (three-letter code: NAD) (formula:  $C_{21}H_{27}N_7O_{14}P_2$ ).



- 
- The diagram illustrates the chemical structure of Flavin Mononucleotide (FMN). It features an isoalloxazine ring system (rings 1, 2, and 4) with atoms N1, N3, N5, N9, and N10. The ring is substituted with a ribityl chain at position 10 (C10) and a dimethylbenzyl group at position 8 (C8). The ribityl chain consists of three carbon atoms (C1, C2, C3) and a phosphate group (P) attached to C3. The phosphate group is further substituted with two hydroxyl groups (OH) and two additional phosphate groups (O3P and O4P). The ribityl chain is shown with stereochemistry: C1 is a CH2 group, C2 has a hydroxyl group (OH) on a wedge, and C3 has a hydroxyl group (OH) on a dash and a phosphate group (P) on a wedge. The ribityl chain is attached to the isoalloxazine ring at C10. The dimethylbenzyl group consists of a benzene ring (C6, C7, C8, C9) with two methyl groups (C7M, C8M) and a methylene group (C7) attached to C8.

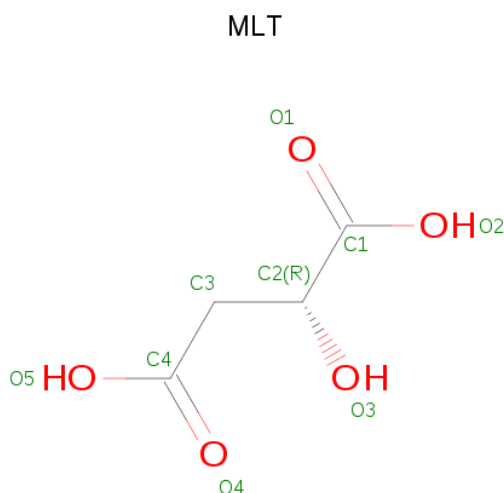
Mol	Chain	Residues	Atoms					ZeroOcc	AltConf
5	A	1	Total	C	N	O	P	0	0
			31	17	4	9	1		

- 



Mol	Chain	Residues	Atoms					ZeroOcc	AltConf
6	B	1	Total 27	C 10	N 5	O 10	P 2	0	0
6	C	1	Total 27	C 10	N 5	O 10	P 2	0	0
6	D	1	Total 27	C 10	N 5	O 10	P 2	0	0

- Molecule 7 is D-MALATE (three-letter code: MLT) (formula:  $C_4H_6O_5$ ).



Mol	Chain	Residues	Atoms			ZeroOcc	AltConf
7	D	1	Total	C	O	0	0
			9	4	5		

- Molecule 8 is water.

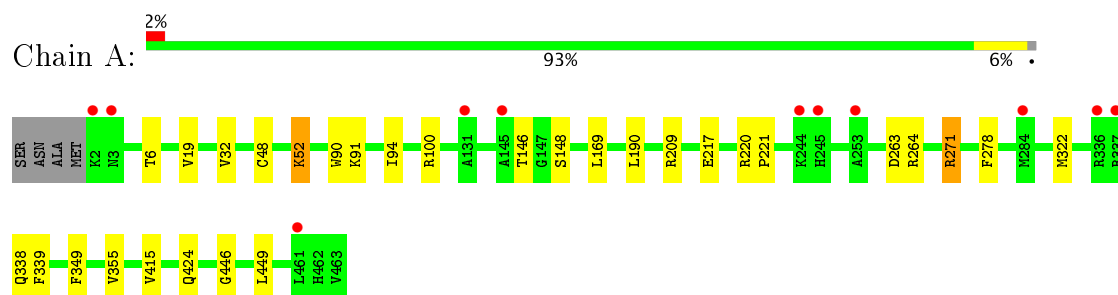
Mol	Chain	Residues	Atoms		ZeroOcc	AltConf
8	A	115	Total 117	O 117	0	2
8	B	90	Total 92	O 92	0	2
8	C	79	Total 82	O 82	0	3
8	D	76	Total 80	O 80	0	4



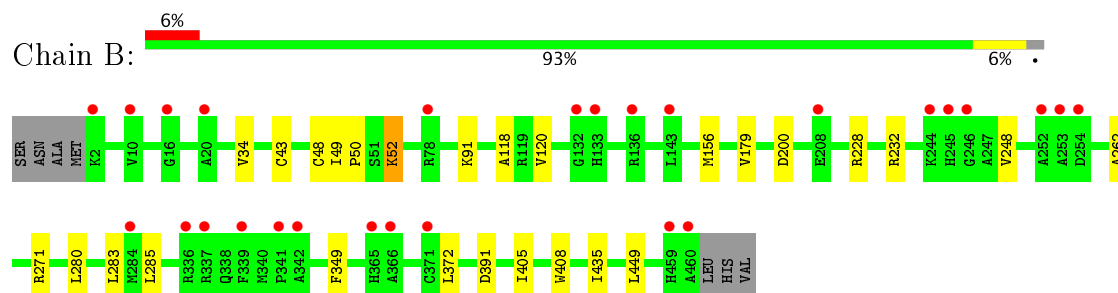
### 3 Residue-property plots [i](#)

These plots are drawn for all protein, RNA and DNA chains in the entry. The first graphic for a chain summarises the proportions of the various outlier classes displayed in the second graphic. The second graphic shows the sequence view annotated by issues in geometry and electron density. Residues are color-coded according to the number of geometric quality criteria for which they contain at least one outlier: green = 0, yellow = 1, orange = 2 and red = 3 or more. A red dot above a residue indicates a poor fit to the electron density ( $RSRZ > 2$ ). Stretches of 2 or more consecutive residues without any outlier are shown as a green connector. Residues present in the sample, but not in the model, are shown in grey.

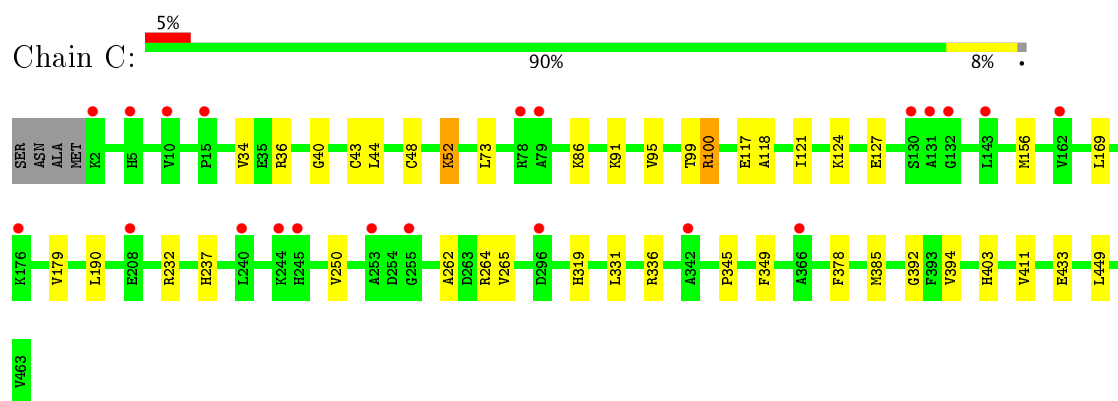
#### • Molecule 1: Dihydrolipoyl dehydrogenase



#### • Molecule 1: Dihydrolipoyl dehydrogenase

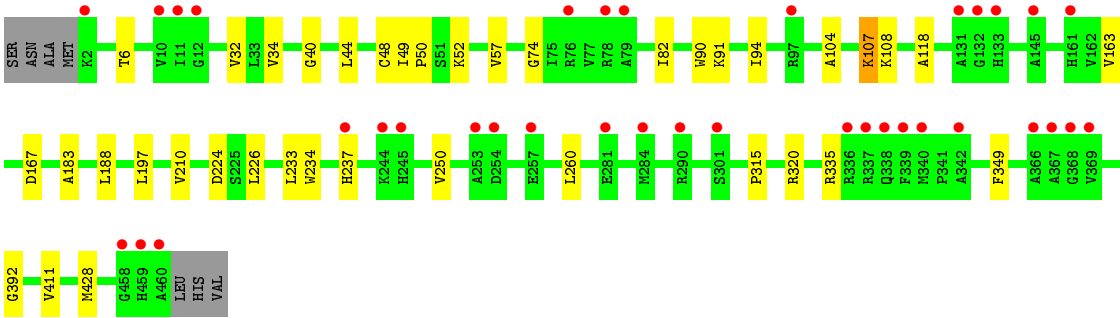


#### • Molecule 1: Dihydrolipoyl dehydrogenase



#### • Molecule 1: Dihydrolipoyl dehydrogenase





## 4 Data and refinement statistics

Property	Value	Source
Space group	P 1 21 1	Depositor
Cell constants a, b, c, $\alpha$ , $\beta$ , $\gamma$	83.56Å 107.25Å 105.43Å 90.00° 106.09° 90.00°	Depositor
Resolution (Å)	29.21 – 2.30 29.21 – 2.30	Depositor EDS
% Data completeness (in resolution range)	99.7 (29.21-2.30) 99.8 (29.21-2.30)	Depositor EDS
$R_{merge}$	0.11	Depositor
$R_{sym}$	0.11	Depositor
$\langle I/\sigma(I) \rangle$ <sup>1</sup>	1.80 (at 2.31Å)	Xtriage
Refinement program	REFMAC 5.8.0189	Depositor
R, $R_{free}$	0.199 , 0.253 0.200 , 0.254	Depositor DCC
$R_{free}$ test set	3962 reflections (5.27%)	DCC
Wilson B-factor (Å <sup>2</sup> )	42.0	Xtriage
Anisotropy	0.056	Xtriage
Bulk solvent $k_{sol}$ (e/Å <sup>3</sup> ), $B_{sol}$ (Å <sup>2</sup> )	0.32 , 38.5	EDS
L-test for twinning <sup>2</sup>	$\langle  L  \rangle = 0.50$ , $\langle L^2 \rangle = 0.34$	Xtriage
Estimated twinning fraction	No twinning to report.	Xtriage
$F_o, F_c$ correlation	0.95	EDS
Total number of atoms	14440	wwPDB-VP
Average B, all atoms (Å <sup>2</sup> )	51.0	wwPDB-VP

Xtriage's analysis on translational NCS is as follows: *The largest off-origin peak in the Patterson function is 4.29% of the height of the origin peak. No significant pseudotranslation is detected.*

<sup>1</sup>Intensities estimated from amplitudes.

<sup>2</sup>Theoretical values of  $\langle |L| \rangle$ ,  $\langle L^2 \rangle$  for acentric reflections are 0.5, 0.333 respectively for untwinned datasets, and 0.375, 0.2 for perfectly twinned datasets.

## 5 Model quality [i](#)

### 5.1 Standard geometry [i](#)

Bond lengths and bond angles in the following residue types are not validated in this section: ADP, NAD, CL, FMN, MLT, FAD

The Z score for a bond length (or angle) is the number of standard deviations the observed value is removed from the expected value. A bond length (or angle) with  $|Z| > 5$  is considered an outlier worth inspection. RMSZ is the root-mean-square of all Z scores of the bond lengths (or angles).

Mol	Chain	Bond lengths		Bond angles	
		RMSZ	# Z  >5	RMSZ	# Z  >5
1	A	0.44	0/3500	0.75	2/4750 (0.0%)
1	B	0.42	0/3447	0.71	0/4679
1	C	0.42	0/3474	0.70	0/4714
1	D	0.43	0/3446	0.72	0/4676
All	All	0.43	0/13867	0.72	2/18819 (0.0%)

There are no bond length outliers.

All (2) bond angle outliers are listed below:

Mol	Chain	Res	Type	Atoms	Z	Observed(°)	Ideal(°)
1	A	271	ARG	NE-CZ-NH1	6.06	123.33	120.30
1	A	271	ARG	NE-CZ-NH2	-5.13	117.73	120.30

There are no chirality outliers.

There are no planarity outliers.

### 5.2 Too-close contacts [i](#)

In the following table, the Non-H and H(model) columns list the number of non-hydrogen atoms and hydrogen atoms in the chain respectively. The H(added) column lists the number of hydrogen atoms added and optimized by MolProbity. The Clashes column lists the number of clashes within the asymmetric unit, whereas Symm-Clashes lists symmetry related clashes.

Mol	Chain	Non-H	H(model)	H(added)	Clashes	Symm-Clashes
1	A	3442	0	3496	17	0
1	B	3390	0	3451	20	0
1	C	3416	0	3479	25	0
1	D	3389	0	3451	26	0
2	A	1	0	0	0	0

*Continued on next page...*

*Continued from previous page...*

Mol	Chain	Non-H	H(model)	H(added)	Clashes	Symm-Clashes
2	C	1	0	0	0	0
3	A	106	0	62	0	0
3	B	53	0	31	0	0
3	C	53	0	31	0	0
3	D	53	0	31	0	0
4	A	44	0	26	0	0
5	A	31	0	19	0	0
6	B	27	0	12	0	0
6	C	27	0	12	0	0
6	D	27	0	12	0	0
7	D	9	0	4	0	0
8	A	117	0	0	1	0
8	B	92	0	0	1	0
8	C	82	0	0	1	0
8	D	80	0	0	0	0
All	All	14440	0	14117	83	0

The all-atom clashscore is defined as the number of clashes found per 1000 atoms (including hydrogen atoms). The all-atom clashscore for this structure is 3.

The worst 5 of 83 close contacts within the same asymmetric unit are listed below, sorted by their clash magnitude.

Atom-1	Atom-2	Interatomic distance (Å)	Clash overlap (Å)
1:A:6:THR:HG21	1:A:32:VAL:HG23	1.57	0.84
1:B:43:CYS:HG	1:B:48:CYS:HG	0.83	0.82
1:D:6:THR:HG21	1:D:32:VAL:HG23	1.66	0.77
1:C:43:CYS:HG	1:C:48:CYS:HG	1.38	0.71
1:B:52:LYS:HD2	1:B:349:PHE:CD1	2.30	0.66

There are no symmetry-related clashes.

## 5.3 Torsion angles

### 5.3.1 Protein backbone

In the following table, the Percentiles column shows the percent Ramachandran outliers of the chain as a percentile score with respect to all X-ray entries followed by that with respect to entries of similar resolution.

The Analysed column shows the number of residues for which the backbone conformation was analysed, and the total number of residues.

Mol	Chain	Analysed	Favoured	Allowed	Outliers	Percentiles	
1	A	464/466 (100%)	448 (97%)	16 (3%)	0	100	100
1	B	458/466 (98%)	437 (95%)	21 (5%)	0	100	100
1	C	461/466 (99%)	446 (97%)	15 (3%)	0	100	100
1	D	458/466 (98%)	440 (96%)	18 (4%)	0	100	100
All	All	1841/1864 (99%)	1771 (96%)	70 (4%)	0	100	100

There are no Ramachandran outliers to report.

### 5.3.2 Protein sidechains ⓘ

In the following table, the Percentiles column shows the percent sidechain outliers of the chain as a percentile score with respect to all X-ray entries followed by that with respect to entries of similar resolution.

The Analysed column shows the number of residues for which the sidechain conformation was analysed, and the total number of residues.

Mol	Chain	Analysed	Rotameric	Outliers	Percentiles	
1	A	347/346 (100%)	343 (99%)	4 (1%)	75	87
1	B	341/346 (99%)	339 (99%)	2 (1%)	89	95
1	C	344/346 (99%)	338 (98%)	6 (2%)	66	81
1	D	341/346 (99%)	338 (99%)	3 (1%)	82	91
All	All	1373/1384 (99%)	1358 (99%)	15 (1%)	78	89

5 of 15 residues with a non-rotameric sidechain are listed below:

Mol	Chain	Res	Type
1	C	52	LYS
1	C	91	LYS
1	D	91	LYS
1	B	91	LYS
1	C	264	ARG

Some sidechains can be flipped to improve hydrogen bonding and reduce clashes. There are no such sidechains identified.

### 5.3.3 RNA ⓘ

There are no RNA molecules in this entry.

## 5.4 Non-standard residues in protein, DNA, RNA chains [i](#)

There are no non-standard protein/DNA/RNA residues in this entry.

## 5.5 Carbohydrates [i](#)

There are no carbohydrates in this entry.

## 5.6 Ligand geometry [i](#)

Of 13 ligands modelled in this entry, 2 are monoatomic - leaving 11 for Mogul analysis.

In the following table, the Counts columns list the number of bonds (or angles) for which Mogul statistics could be retrieved, the number of bonds (or angles) that are observed in the model and the number of bonds (or angles) that are defined in the Chemical Component Dictionary. The Link column lists molecule types, if any, to which the group is linked. The Z score for a bond length (or angle) is the number of standard deviations the observed value is removed from the expected value. A bond length (or angle) with  $|Z| > 2$  is considered an outlier worth inspection. RMSZ is the root-mean-square of all Z scores of the bond lengths (or angles).

Mol	Type	Chain	Res	Link	Bond lengths			Bond angles		
					Counts	RMSZ	# $ Z  > 2$	Counts	RMSZ	# $ Z  > 2$
3	FAD	A	502	-	51,58,58	1.45	7 (13%)	54,89,89	2.11	8 (14%)
3	FAD	A	503	-	51,58,58	1.57	7 (13%)	54,89,89	2.01	8 (14%)
4	NAD	A	504	-	41,48,48	0.94	3 (7%)	43,73,73	1.46	4 (9%)
5	FMN	A	505	-	31,33,33	1.91	6 (19%)	38,50,50	1.98	7 (18%)
3	FAD	B	501	-	51,58,58	1.50	7 (13%)	54,89,89	2.11	8 (14%)
6	ADP	B	502	-	25,29,29	1.10	2 (8%)	24,45,45	1.81	2 (8%)
3	FAD	C	502	-	51,58,58	1.48	7 (13%)	54,89,89	2.03	8 (14%)
6	ADP	C	503	-	25,29,29	1.10	2 (8%)	24,45,45	1.82	2 (8%)
7	MLT	D	501	-	2,8,8	0.88	0	4,10,10	1.56	1 (25%)
3	FAD	D	502	-	51,58,58	1.41	6 (11%)	54,89,89	2.12	8 (14%)
6	ADP	D	503	-	25,29,29	1.04	2 (8%)	24,45,45	1.82	2 (8%)

In the following table, the Chirals column lists the number of chiral outliers, the number of chiral centers analysed, the number of these observed in the model and the number defined in the Chemical Component Dictionary. Similar counts are reported in the Torsion and Rings columns. '-' means no outliers of that kind were identified.

Mol	Type	Chain	Res	Link	Chirals	Torsions	Rings
3	FAD	A	502	-	-	0/28/50/50	0/6/6/6

*Continued on next page...*

*Continued from previous page...*

Mol	Type	Chain	Res	Link	Chirals	Torsions	Rings
3	FAD	A	503	-	-	0/28/50/50	0/6/6/6
4	NAD	A	504	-	-	0/22/62/62	0/5/5/5
5	FMN	A	505	-	-	0/16/18/18	0/3/3/3
3	FAD	B	501	-	-	0/28/50/50	0/6/6/6
6	ADP	B	502	-	-	0/12/32/32	0/3/3/3
3	FAD	C	502	-	-	0/28/50/50	0/6/6/6
6	ADP	C	503	-	-	0/12/32/32	0/3/3/3
7	MLT	D	501	-	-	0/2/8/8	0/0/0/0
3	FAD	D	502	-	-	0/28/50/50	0/6/6/6
6	ADP	D	503	-	-	0/12/32/32	0/3/3/3

The worst 5 of 49 bond length outliers are listed below:

Mol	Chain	Res	Type	Atoms	Z	Observed(Å)	Ideal(Å)
3	A	503	FAD	C10-N1	2.06	1.36	1.33
6	D	503	ADP	C2-N3	2.06	1.35	1.32
4	A	504	NAD	O4D-C1D	2.09	1.44	1.41
6	B	502	ADP	C2-N3	2.12	1.35	1.32
4	A	504	NAD	C2A-N3A	2.18	1.35	1.32

The worst 5 of 58 bond angle outliers are listed below:

Mol	Chain	Res	Type	Atoms	Z	Observed(°)	Ideal(°)
6	B	502	ADP	N3-C2-N1	-7.23	122.56	128.86
4	A	504	NAD	N3A-C2A-N1A	-7.03	122.73	128.86
3	A	502	FAD	N3A-C2A-N1A	-7.03	122.73	128.86
3	A	503	FAD	N3A-C2A-N1A	-7.03	122.74	128.86
6	D	503	ADP	N3-C2-N1	-6.94	122.81	128.86

There are no chirality outliers.

There are no torsion outliers.

There are no ring outliers.

No monomer is involved in short contacts.

## 5.7 Other polymers ⓘ

There are no such residues in this entry.



## 5.8 Polymer linkage issues ⓘ

There are no chain breaks in this entry.

## 6 Fit of model and data [i](#)

### 6.1 Protein, DNA and RNA chains [i](#)

In the following table, the column labelled ‘#RSRZ> 2’ contains the number (and percentage) of RSRZ outliers, followed by percent RSRZ outliers for the chain as percentile scores relative to all X-ray entries and entries of similar resolution. The OWAB column contains the minimum, median, 95<sup>th</sup> percentile and maximum values of the occupancy-weighted average B-factor per residue. The column labelled ‘Q< 0.9’ lists the number of (and percentage) of residues with an average occupancy less than 0.9.

Mol	Chain	Analysed	<RSRZ>	#RSRZ>2	OWAB(Å <sup>2</sup> )	Q<0.9
1	A	462/466 (99%)	0.05	11 (2%) 59 66	27, 42, 71, 103	0
1	B	459/466 (98%)	0.24	27 (5%) 23 30	27, 45, 85, 116	0
1	C	462/466 (99%)	0.11	21 (4%) 34 41	32, 49, 77, 120	0
1	D	459/466 (98%)	0.29	36 (7%) 14 19	30, 49, 93, 123	0
All	All	1842/1864 (98%)	0.17	95 (5%) 28 35	27, 47, 81, 123	0

The worst 5 of 95 RSRZ outliers are listed below:

Mol	Chain	Res	Type	RSRZ
1	D	342	ALA	8.3
1	D	254	ASP	6.9
1	B	253	ALA	6.7
1	B	460	ALA	6.6
1	B	337	ARG	6.2

### 6.2 Non-standard residues in protein, DNA, RNA chains [i](#)

There are no non-standard protein/DNA/RNA residues in this entry.

### 6.3 Carbohydrates [i](#)

There are no carbohydrates in this entry.

### 6.4 Ligands [i](#)

In the following table, the Atoms column lists the number of modelled atoms in the group and the number defined in the chemical component dictionary. LLDF column lists the quality of electron density of the group with respect to its neighbouring residues in protein, DNA or RNA chains. The B-factors column lists the minimum, median, 95<sup>th</sup> percentile and maximum values of B factors

of atoms in the group. The column labelled 'Q< 0.9' lists the number of atoms with occupancy less than 0.9.

Mol	Type	Chain	Res	Atoms	RSCC	RSR	LLDF	B-factors( $\text{\AA}^2$ )	Q<0.9
6	ADP	B	502	27/27	0.69	0.34	7.39	98,117,130,138	0
5	FMN	A	505	31/31	0.69	0.48	6.53	82,101,136,141	0
7	MLT	D	501	9/9	0.85	0.20	2.62	61,69,77,79	0
4	NAD	A	504	44/44	0.63	0.31	2.07	85,122,155,161	0
6	ADP	D	503	27/27	0.90	0.22	1.17	60,68,85,91	0
3	FAD	A	503	53/53	0.90	0.19	1.14	48,64,85,86	0
6	ADP	C	503	27/27	0.90	0.14	0.46	56,60,89,94	0
3	FAD	D	502	53/53	0.95	0.15	0.09	31,36,53,57	0
3	FAD	A	502	53/53	0.96	0.15	0.05	28,33,40,45	0
3	FAD	C	502	53/53	0.96	0.12	-0.62	36,41,47,47	0
3	FAD	B	501	53/53	0.97	0.12	-0.67	31,38,42,43	0
2	CL	A	501	1/1	0.94	0.12	-0.81	64,64,64,64	0
2	CL	C	501	1/1	0.75	0.09	-	81,81,81,81	0

## 6.5 Other polymers [i](#)

There are no such residues in this entry.