



# Full wwPDB X-ray Structure Validation Report ⓘ

Jan 8, 2018 – 05:23 PM EST

PDB ID : 4COJ  
Title : Crystal structure of the anaerobic ribonucleotide reductase from *Thermotoga maritima* in complex with dATP and CTP  
Authors : Aurelius, O.; Johansson, R.; Bagenholm, V.; Beck, T.; Balhuizen, A.; Lundin, D.; Sjöberg, B.M.; Mulliez, E.; Logan, D.T.  
Deposited on : 2014-01-28  
Resolution : 2.48 Å(reported)

This is a Full wwPDB X-ray Structure Validation Report for a publicly released PDB entry.

We welcome your comments at [validation@mail.wwpdb.org](mailto:validation@mail.wwpdb.org)

A user guide is available at

<http://wwpdb.org/validation/2016/XrayValidationReportHelp>

with specific help available everywhere you see the ⓘ symbol.

---

The following versions of software and data (see [references ⓘ](#)) were used in the production of this report:

MolProbity : 4.02b-467  
Mogul : 1.7.2 (RC1), CSD as538be (2017)  
Xtriage (Phenix) : 1.9-1692  
EDS : rb-20030736  
Percentile statistics : 20161228.v01 (using entries in the PDB archive December 28th 2016)  
Refmac : 5.8.0135  
CCP4 : 6.5.0  
Ideal geometry (proteins) : Engh & Huber (2001)  
Ideal geometry (DNA, RNA) : Parkinson et al. (1996)  
Validation Pipeline (wwPDB-VP) : rb-20030736

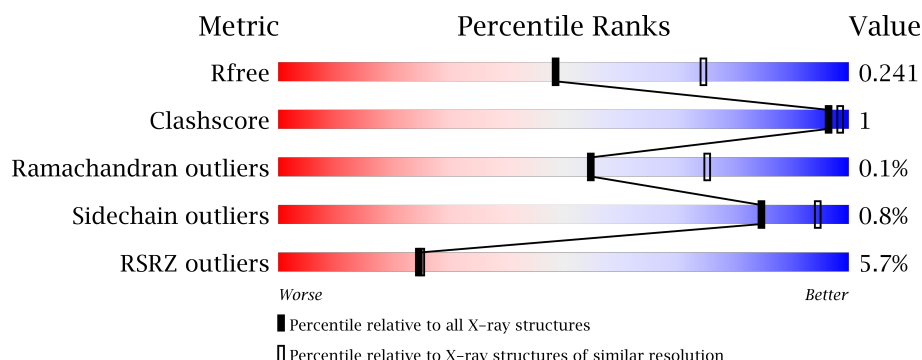
# 1 Overall quality at a glance

The following experimental techniques were used to determine the structure:

*X-RAY DIFFRACTION*

The reported resolution of this entry is 2.48 Å.

Percentile scores (ranging between 0-100) for global validation metrics of the entry are shown in the following graphic. The table shows the number of entries on which the scores are based.



Metric	Whole archive (#Entries)	Similar resolution (#Entries, resolution range(Å))
$R_{free}$	100719	4719 (2.50-2.46)
Clashscore	112137	5483 (2.50-2.46)
Ramachandran outliers	110173	5388 (2.50-2.46)
Sidechain outliers	110143	5390 (2.50-2.46)
RSRZ outliers	101464	4754 (2.50-2.46)

The table below summarises the geometric issues observed across the polymeric chains and their fit to the electron density. The red, orange, yellow and green segments on the lower bar indicate the fraction of residues that contain outliers for  $\geq 3$ , 2, 1 and 0 types of geometric quality criteria. A grey segment represents the fraction of residues that are not modelled. The numeric value for each fraction is indicated below the corresponding segment, with a dot representing fractions  $\leq 5\%$ . The upper red bar (where present) indicates the fraction of residues that have poor fit to the electron density. The numeric value is given above the bar.

Mol	Chain	Length	Quality of chain
1	A	651	<div> <div>6%</div> <div>87%</div> <div>9%</div> </div>
1	B	651	<div> <div>5%</div> <div>88%</div> <div>8%</div> </div>

## 2 Entry composition [i](#)

There are 6 unique types of molecules in this entry. The entry contains 10096 atoms, of which 0 are hydrogens and 0 are deuteriums.

In the tables below, the ZeroOcc column contains the number of atoms modelled with zero occupancy, the AltConf column contains the number of residues with at least one atom in alternate conformation and the Trace column contains the number of residues modelled with at most 2 atoms.

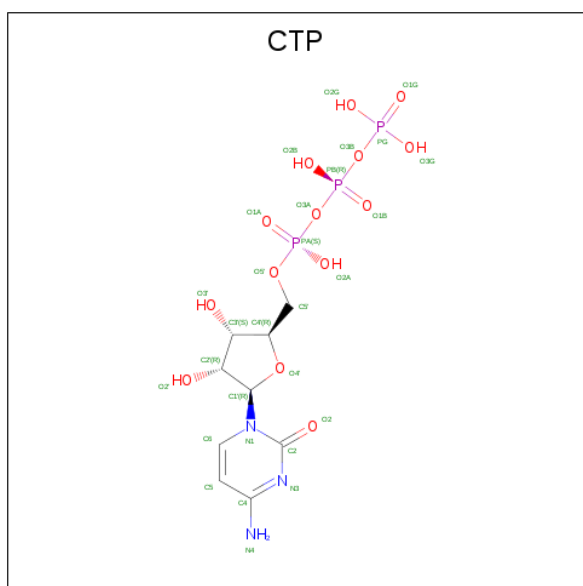
- Molecule 1 is a protein called ANAEROBIC RIBONUCLEOSIDE-TRIPHOSPHATE REDUCTASE.

Mol	Chain	Residues	Atoms					ZeroOcc	AltConf	Trace
1	A	594	Total	C	N	O	S	0	1	0
			4865	3144	800	894	27			
1	B	601	Total	C	N	O	S	0	1	0
			4928	3183	813	906	26			

- Molecule 2 is ZINC ION (three-letter code: ZN) (formula: Zn).

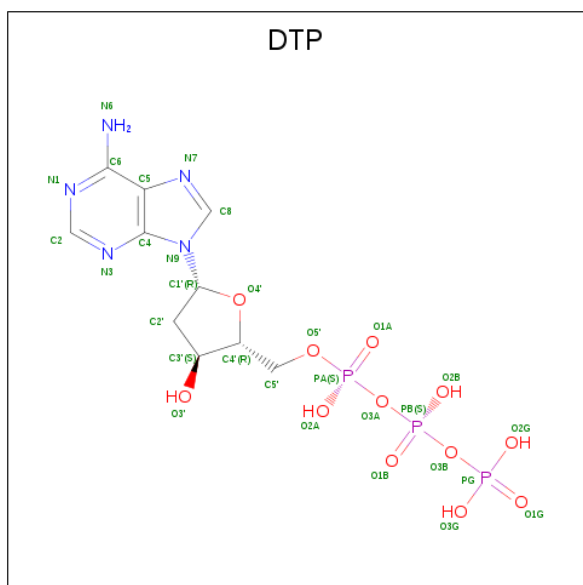
Mol	Chain	Residues	Atoms		ZeroOcc	AltConf
2	B	1	Total	Zn	0	0
			1	1		
2	A	1	Total	Zn	0	0
			1	1		

- Molecule 3 is CYTIDINE-5'-TRIPHOSPHATE (three-letter code: CTP) (formula:  $C_9H_{16}N_3O_{14}P_3$ ).



Mol	Chain	Residues	Atoms					ZeroOcc	AltConf
3	A	1	Total	C	N	O	P	0	0
			29	9	3	14	3		
3	B	1	Total	C	N	O	P	0	0
			29	9	3	14	3		

- Molecule 4 is 2'-DEOXYADENOSINE 5'-TRIPHOSPHATE (three-letter code: DTP) (formula:  $C_{10}H_{16}N_5O_{12}P_3$ ).



Mol	Chain	Residues	Atoms					ZeroOcc	AltConf
4	A	1	Total	C	N	O	P	0	0
			30	10	5	12	3		
4	B	1	Total	C	N	O	P	0	0
			30	10	5	12	3		

- Molecule 5 is MAGNESIUM ION (three-letter code: MG) (formula: Mg).

Mol	Chain	Residues	Atoms		ZeroOcc	AltConf
5	B	1	Total	Mg	0	0
			1	1		
5	A	1	Total	Mg	0	0
			1	1		

- Molecule 6 is water.

Mol	Chain	Residues	Atoms		ZeroOcc	AltConf
6	A	95	Total	O	0	0
			95	95		

*Continued on next page...*

*Continued from previous page...*

Mol	Chain	Residues	Atoms		ZeroOcc	AltConf
6	B	86	Total	O	0	0
			86	86		



## 4 Data and refinement statistics

Property	Value	Source
Space group	P 1 21 1	Depositor
Cell constants a, b, c, $\alpha$ , $\beta$ , $\gamma$	77.98Å 94.51Å 87.07Å 90.00° 112.09° 90.00°	Depositor
Resolution (Å)	29.14 – 2.48 29.14 – 2.48	Depositor EDS
% Data completeness (in resolution range)	99.7 (29.14-2.48) 99.7 (29.14-2.48)	Depositor EDS
$R_{merge}$	0.12	Depositor
$R_{sym}$	(Not available)	Depositor
$\langle I/\sigma(I) \rangle$ <sup>1</sup>	2.71 (at 2.48Å)	Xtriage
Refinement program	PHENIX (PHENIX.REFINE)	Depositor
R, $R_{free}$	0.204 , 0.242 0.209 , 0.241	Depositor DCC
$R_{free}$ test set	1049 reflections (2.53%)	DCC
Wilson B-factor (Å <sup>2</sup> )	31.5	Xtriage
Anisotropy	0.784	Xtriage
Bulk solvent $k_{sol}$ (e/Å <sup>3</sup> ), $B_{sol}$ (Å <sup>2</sup> )	0.33 , 55.5	EDS
L-test for twinning <sup>2</sup>	$\langle  L  \rangle = 0.48$ , $\langle L^2 \rangle = 0.31$	Xtriage
Estimated twinning fraction	No twinning to report.	Xtriage
$F_o, F_c$ correlation	0.93	EDS
Total number of atoms	10096	wwPDB-VP
Average B, all atoms (Å <sup>2</sup> )	50.0	wwPDB-VP

Xtriage's analysis on translational NCS is as follows: *The largest off-origin peak in the Patterson function is 3.96% of the height of the origin peak. No significant pseudotranslation is detected.*

<sup>1</sup>Intensities estimated from amplitudes.

<sup>2</sup>Theoretical values of  $\langle |L| \rangle$ ,  $\langle L^2 \rangle$  for acentric reflections are 0.5, 0.333 respectively for untwinned datasets, and 0.375, 0.2 for perfectly twinned datasets.

## 5 Model quality

### 5.1 Standard geometry

Bond lengths and bond angles in the following residue types are not validated in this section: ZN, DTP, CTP, MG

The Z score for a bond length (or angle) is the number of standard deviations the observed value is removed from the expected value. A bond length (or angle) with  $|Z| > 5$  is considered an outlier worth inspection. RMSZ is the root-mean-square of all Z scores of the bond lengths (or angles).

Mol	Chain	Bond lengths		Bond angles	
		RMSZ	$\# Z  > 5$	RMSZ	$\# Z  > 5$
1	A	0.26	0/4984	0.41	0/6724
1	B	0.26	0/5048	0.41	0/6808
All	All	0.26	0/10032	0.41	0/13532

There are no bond length outliers.

There are no bond angle outliers.

There are no chirality outliers.

There are no planarity outliers.

### 5.2 Too-close contacts

In the following table, the Non-H and H(model) columns list the number of non-hydrogen atoms and hydrogen atoms in the chain respectively. The H(added) column lists the number of hydrogen atoms added and optimized by MolProbity. The Clashes column lists the number of clashes within the asymmetric unit, whereas Symm-Clashes lists symmetry related clashes.

Mol	Chain	Non-H	H(model)	H(added)	Clashes	Symm-Clashes
1	A	4865	0	4798	15	1
1	B	4928	0	4859	12	1
2	A	1	0	0	0	0
2	B	1	0	0	0	0
3	A	29	0	12	0	0
3	B	29	0	12	0	0
4	A	30	0	12	1	0
4	B	30	0	12	0	0
5	A	1	0	0	0	0
5	B	1	0	0	0	0
6	A	95	0	0	1	0

*Continued on next page...*



*Continued from previous page...*

Mol	Chain	Non-H	H(model)	H(added)	Clashes	Symm-Clashes
6	B	86	0	0	0	0
All	All	10096	0	9705	24	1

The all-atom clashscore is defined as the number of clashes found per 1000 atoms (including hydrogen atoms). The all-atom clashscore for this structure is 1.

All (24) close contacts within the same asymmetric unit are listed below, sorted by their clash magnitude.

Atom-1	Atom-2	Interatomic distance (Å)	Clash overlap (Å)
1:B:114:HIS:O	1:B:370:LYS:NZ	2.05	0.89
1:A:2:LYS:NZ	1:B:4:GLN:OE1	2.07	0.88
1:A:4:GLN:OE1	1:B:2:LYS:NZ	2.07	0.87
1:A:500:GLU:O	1:A:633:ARG:NH1	2.20	0.74
1:B:596:ASP:OD2	1:B:610:LYS:NZ	2.21	0.74
1:A:565:LYS:N	1:A:569:GLU:OE2	2.21	0.73
1:B:630:ASN:OD1	1:B:633:ARG:NH2	2.41	0.53
1:B:454:THR:OG1	1:B:455:GLU:N	2.43	0.52
1:A:382:GLU:OE1	1:A:397:ARG:NH1	2.43	0.49
1:A:456:ASP:OD2	1:A:461:LYS:NZ	2.42	0.48
1:A:382:GLU:OE2	1:A:397:ARG:NH2	2.44	0.47
1:B:101:GLU:OE2	1:B:396:HIS:NE2	2.48	0.46
4:A:654:DTP:N6	1:B:157:GLN:HG2	2.31	0.45
1:A:75:LYS:HB2	1:A:76:PRO:HD3	2.00	0.43
1:A:235:ARG:HB3	1:A:239:LYS:NZ	2.33	0.43
1:A:432:ASN:N	1:A:432:ASN:OD1	2.52	0.43
1:A:454:THR:OG1	1:A:455:GLU:N	2.52	0.42
1:A:376:LEU:HB2	1:A:377:PRO:HD3	2.02	0.42
1:B:198:ARG:NH1	1:B:199:ASP:HA	2.34	0.42
1:A:124:TYR:O	1:A:172:GLY:N	2.47	0.41
1:A:42:THR:HG21	1:B:81:TYR:CZ	2.55	0.41
1:B:122:MET:HB2	1:B:123:PRO:HD2	2.03	0.40
1:B:314:ASP:N	1:B:314:ASP:OD1	2.51	0.40
1:A:526:GLN:O	6:A:2080:HOH:O	2.22	0.40

All (1) symmetry-related close contacts are listed below. The label for Atom-2 includes the symmetry operator and encoded unit-cell translations to be applied.

Atom-1	Atom-2	Interatomic distance (Å)	Clash overlap (Å)
1:A:293:ASP:OD1	1:B:295:LYS:NZ[1_656]	2.14	0.06

## 5.3 Torsion angles

### 5.3.1 Protein backbone

In the following table, the Percentiles column shows the percent Ramachandran outliers of the chain as a percentile score with respect to all X-ray entries followed by that with respect to entries of similar resolution.

The Analysed column shows the number of residues for which the backbone conformation was analysed, and the total number of residues.

Mol	Chain	Analysed	Favoured	Allowed	Outliers	Percentiles	
1	A	587/651 (90%)	571 (97%)	16 (3%)	0	100	100
1	B	594/651 (91%)	575 (97%)	18 (3%)	1 (0%)	51	71
All	All	1181/1302 (91%)	1146 (97%)	34 (3%)	1 (0%)	55	75

All (1) Ramachandran outliers are listed below:

Mol	Chain	Res	Type
1	B	222	THR

### 5.3.2 Protein sidechains

In the following table, the Percentiles column shows the percent sidechain outliers of the chain as a percentile score with respect to all X-ray entries followed by that with respect to entries of similar resolution.

The Analysed column shows the number of residues for which the sidechain conformation was analysed, and the total number of residues.

Mol	Chain	Analysed	Rotameric	Outliers	Percentiles	
1	A	525/577 (91%)	521 (99%)	4 (1%)	85	94
1	B	531/577 (92%)	527 (99%)	4 (1%)	85	94
All	All	1056/1154 (92%)	1048 (99%)	8 (1%)	85	94

All (8) residues with a non-rotameric sidechain are listed below:

Mol	Chain	Res	Type
1	A	26	MET
1	A	154	THR
1	A	397	ARG
1	A	518	GLN
1	B	154	THR

*Continued on next page...*

*Continued from previous page...*

Mol	Chain	Res	Type
1	B	215	SER
1	B	318	TYR
1	B	518	GLN

Some sidechains can be flipped to improve hydrogen bonding and reduce clashes. There are no such sidechains identified.

### 5.3.3 RNA ⓘ

There are no RNA molecules in this entry.

## 5.4 Non-standard residues in protein, DNA, RNA chains ⓘ

There are no non-standard protein/DNA/RNA residues in this entry.

## 5.5 Carbohydrates ⓘ

There are no carbohydrates in this entry.

## 5.6 Ligand geometry ⓘ

Of 8 ligands modelled in this entry, 4 are monoatomic - leaving 4 for Mogul analysis.

In the following table, the Counts columns list the number of bonds (or angles) for which Mogul statistics could be retrieved, the number of bonds (or angles) that are observed in the model and the number of bonds (or angles) that are defined in the Chemical Component Dictionary. The Link column lists molecule types, if any, to which the group is linked. The Z score for a bond length (or angle) is the number of standard deviations the observed value is removed from the expected value. A bond length (or angle) with  $|Z| > 2$  is considered an outlier worth inspection. RMSZ is the root-mean-square of all Z scores of the bond lengths (or angles).

Mol	Type	Chain	Res	Link	Bond lengths			Bond angles		
					Counts	RMSZ	# $ Z  > 2$	Counts	RMSZ	# $ Z  > 2$
3	CTP	A	653	-	24,30,30	0.71	0	24,47,47	0.98	1 (4%)
4	DTP	A	654	5	26,32,32	0.86	1 (3%)	26,50,50	1.80	3 (11%)
3	CTP	B	653	-	24,30,30	0.69	0	24,47,47	0.94	1 (4%)
4	DTP	B	654	5	26,32,32	0.90	1 (3%)	26,50,50	1.75	3 (11%)

In the following table, the Chirals column lists the number of chiral outliers, the number of chiral

centers analysed, the number of these observed in the model and the number defined in the Chemical Component Dictionary. Similar counts are reported in the Torsion and Rings columns. '-' means no outliers of that kind were identified.

Mol	Type	Chain	Res	Link	Chirals	Torsions	Rings
3	CTP	A	653	-	-	0/18/38/38	0/2/2/2
4	DTP	A	654	5	-	0/18/34/34	0/3/3/3
3	CTP	B	653	-	-	0/18/38/38	0/2/2/2
4	DTP	B	654	5	-	0/18/34/34	0/3/3/3

All (2) bond length outliers are listed below:

Mol	Chain	Res	Type	Atoms	Z	Observed(Å)	Ideal(Å)
4	A	654	DTP	C5-C4	2.78	1.46	1.40
4	B	654	DTP	C5-C4	3.00	1.47	1.40

All (8) bond angle outliers are listed below:

Mol	Chain	Res	Type	Atoms	Z	Observed(°)	Ideal(°)
4	A	654	DTP	N3-C2-N1	-7.12	122.66	128.86
4	B	654	DTP	N3-C2-N1	-6.78	122.95	128.86
4	B	654	DTP	C4-C5-N7	-3.22	106.30	109.41
4	A	654	DTP	C4-C5-N7	-2.70	106.80	109.41
3	B	653	CTP	N4-C4-N3	2.10	120.18	116.64
4	B	654	DTP	O4'-C1'-N9	2.16	111.41	107.78
3	A	653	CTP	N4-C4-N3	2.19	120.33	116.64
4	A	654	DTP	O4'-C1'-N9	2.41	111.84	107.78

There are no chirality outliers.

There are no torsion outliers.

There are no ring outliers.

1 monomer is involved in 1 short contact:

Mol	Chain	Res	Type	Clashes	Symm-Clashes
4	A	654	DTP	1	0

## 5.7 Other polymers ⓘ

There are no such residues in this entry.

## 5.8 Polymer linkage issues ⓘ

There are no chain breaks in this entry.

## 6 Fit of model and data ⓘ

### 6.1 Protein, DNA and RNA chains ⓘ

In the following table, the column labelled ‘#RSRZ> 2’ contains the number (and percentage) of RSRZ outliers, followed by percent RSRZ outliers for the chain as percentile scores relative to all X-ray entries and entries of similar resolution. The OWAB column contains the minimum, median, 95<sup>th</sup> percentile and maximum values of the occupancy-weighted average B-factor per residue. The column labelled ‘Q< 0.9’ lists the number of (and percentage) of residues with an average occupancy less than 0.9.

Mol	Chain	Analysed	<RSRZ>	#RSRZ>2		OWAB(Å <sup>2</sup> )	Q<0.9
1	A	594/651 (91%)	0.33	38 (6%)	20 20	25, 49, 81, 122	0
1	B	601/651 (92%)	0.34	30 (4%)	30 31	23, 49, 81, 119	0
All	All	1195/1302 (91%)	0.34	68 (5%)	24 25	23, 49, 81, 122	0

All (68) RSRZ outliers are listed below:

Mol	Chain	Res	Type	RSRZ
1	A	457	ILE	7.5
1	A	631	LYS	4.7
1	A	24	TYR	4.6
1	A	47	ARG	4.5
1	B	24	TYR	4.2
1	A	613	VAL	3.8
1	B	635	GLU	3.8
1	B	328	SER	3.8
1	A	458	ASP	3.7
1	A	4	GLN	3.7
1	A	485	TYR	3.7
1	B	563	SER	3.7
1	A	198	ARG	3.6
1	A	9	ARG	3.6
1	B	636	ILE	3.6
1	A	592	SER	3.5
1	A	46	VAL	3.4
1	B	631	LYS	3.4
1	A	329	CYS	3.4
1	B	9	ARG	3.3
1	B	637	GLU	3.2
1	A	353	LYS	3.1
1	A	351	LYS	3.1
1	A	614	ASP	3.0

*Continued on next page...*

*Continued from previous page...*

Mol	Chain	Res	Type	RSRZ
1	B	325	ALA	3.0
1	A	593	VAL	2.9
1	B	329	CYS	2.9
1	A	486	HIS	2.8
1	A	610	LYS	2.8
1	A	200	LYS	2.7
1	A	512	PHE	2.7
1	A	633	ARG	2.7
1	B	516	GLU	2.7
1	A	330	CYS	2.7
1	B	458	ASP	2.6
1	B	634	ARG	2.6
1	B	606	PRO	2.6
1	B	629	PHE	2.6
1	A	611	ALA	2.6
1	B	512	PHE	2.5
1	B	486	HIS	2.5
1	A	328	SER	2.5
1	A	87	TRP	2.5
1	A	533	ASN	2.5
1	A	325	ALA	2.5
1	A	603	GLU	2.5
1	B	327	ALA	2.5
1	B	87	TRP	2.5
1	A	608	CYS	2.4
1	B	46	VAL	2.4
1	A	91	LYS	2.4
1	B	595	GLU	2.4
1	B	351	LYS	2.4
1	B	626	VAL	2.4
1	A	327	ALA	2.3
1	B	614	ASP	2.3
1	A	604	ARG	2.3
1	B	603	GLU	2.2
1	B	613	VAL	2.2
1	B	485	TYR	2.2
1	A	629	PHE	2.2
1	B	515	GLY	2.1
1	A	595	GLU	2.1
1	B	447	ALA	2.1
1	A	372	ILE	2.1
1	B	246	ARG	2.1

*Continued on next page...*

*Continued from previous page...*

Mol	Chain	Res	Type	RSRZ
1	A	627	SER	2.1
1	A	252	LEU	2.0

## 6.2 Non-standard residues in protein, DNA, RNA chains [i](#)

There are no non-standard protein/DNA/RNA residues in this entry.

## 6.3 Carbohydrates [i](#)

There are no carbohydrates in this entry.

## 6.4 Ligands [i](#)

In the following table, the Atoms column lists the number of modelled atoms in the group and the number defined in the chemical component dictionary. LLDF column lists the quality of electron density of the group with respect to its neighbouring residues in protein, DNA or RNA chains. The B-factors column lists the minimum, median, 95<sup>th</sup> percentile and maximum values of B factors of atoms in the group. The column labelled 'Q< 0.9' lists the number of atoms with occupancy less than 0.9.

Mol	Type	Chain	Res	Atoms	RSCC	RSR	LLDF	B-factors(Å <sup>2</sup> )	Q<0.9
3	CTP	B	653	29/29	0.96	0.14	-0.60	27,52,52,53	0
4	DTP	B	654	30/30	0.94	0.13	-1.02	27,31,59,59	0
4	DTP	A	654	30/30	0.93	0.14	-1.21	27,31,45,87	0
3	CTP	A	653	29/29	0.97	0.11	-1.31	20,39,40,41	0
2	ZN	A	652	1/1	0.90	0.04	-2.15	64,64,64,64	0
2	ZN	B	652	1/1	0.96	0.03	-3.89	64,64,64,64	0
5	MG	B	655	1/1	0.95	0.06	-	33,33,33,33	0
5	MG	A	655	1/1	0.80	0.14	-	48,48,48,48	0

## 6.5 Other polymers [i](#)

There are no such residues in this entry.