



wwPDB X-ray Structure Validation Summary Report ⓘ

Jan 15, 2018 – 06:49 PM EST

PDB ID : 1CVI
Title : CRYSTAL STRUCTURE OF HUMAN PROSTATIC ACID PHOSPHATASE
Authors : Jakob, C.G.; Lewinski, K.; Kuciel, R.; Ostrowski, W.; Lebioda, L.
Deposited on : 1999-08-23
Resolution : 3.20 Å(reported)

This is a wwPDB X-ray Structure Validation Summary Report for a publicly released PDB entry.

We welcome your comments at validation@mail.wwpdb.org

A user guide is available at

<http://wwpdb.org/validation/2016/XrayValidationReportHelp>

with specific help available everywhere you see the ⓘ symbol.

The following versions of software and data (see [references ⓘ](#)) were used in the production of this report:

MolProbity : 4.02b-467
Mogul : 1.7.2 (RC1), CSD as538be (2017)
Xtriage (Phenix) : **NOT EXECUTED**
EDS : **NOT EXECUTED**
Percentile statistics : 20161228.v01 (using entries in the PDB archive December 28th 2016)
Ideal geometry (proteins) : Engh & Huber (2001)
Ideal geometry (DNA, RNA) : Parkinson et al. (1996)
Validation Pipeline (wwPDB-VP) : rb-20030736

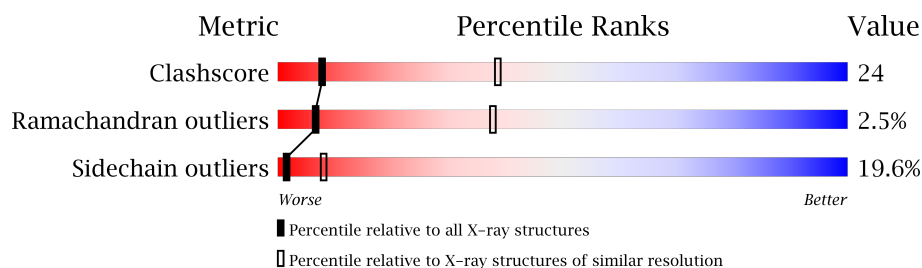
1 Overall quality at a glance

The following experimental techniques were used to determine the structure:

X-RAY DIFFRACTION

The reported resolution of this entry is 3.20 Å.

Percentile scores (ranging between 0-100) for global validation metrics of the entry are shown in the following graphic. The table shows the number of entries on which the scores are based.



Metric	Whole archive (#Entries)	Similar resolution (#Entries, resolution range(Å))
Clashscore	112137	1009 (3.20-3.20)
Ramachandran outliers	110173	1118 (3.22-3.18)
Sidechain outliers	110143	1117 (3.22-3.18)

The table below summarises the geometric issues observed across the polymeric chains and their fit to the electron density. The red, orange, yellow and green segments on the lower bar indicate the fraction of residues that contain outliers for ≥ 3 , 2, 1 and 0 types of geometric quality criteria. A grey segment represents the fraction of residues that are not modelled. The numeric value for each fraction is indicated below the corresponding segment, with a dot representing fractions $\leq 5\%$. The upper red bar (where present) indicates the fraction of residues that have poor fit to the electron density. The numeric value is given above the bar.

Note EDS was not executed.

Mol	Chain	Length	Quality of chain
1	A	342	<div> <div>46%</div> <div>43%</div> <div>11%</div> </div>
1	B	342	<div> <div>46%</div> <div>42%</div> <div>12%</div> </div>
1	C	342	<div> <div>43%</div> <div>47%</div> <div>10%</div> </div>
1	D	342	<div> <div>45%</div> <div>44%</div> <div>11%</div> </div>

2 Entry composition [i](#)

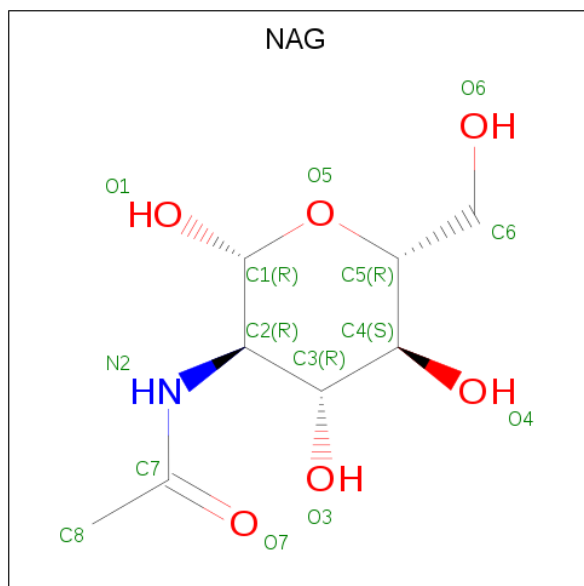
There are 7 unique types of molecules in this entry. The entry contains 12376 atoms, of which 0 are hydrogens and 0 are deuteriums.

In the tables below, the ZeroOcc column contains the number of atoms modelled with zero occupancy, the AltConf column contains the number of residues with at least one atom in alternate conformation and the Trace column contains the number of residues modelled with at most 2 atoms.

- Molecule 1 is a protein called PROSTATIC ACID PHOSPHATASE.

Mol	Chain	Residues	Atoms					ZeroOcc	AltConf	Trace
1	A	342	Total	C	N	O	S	0	0	0
			2801	1807	461	517	16			
1	B	342	Total	C	N	O	S	0	0	0
			2801	1807	461	517	16			
1	C	342	Total	C	N	O	S	0	0	0
			2801	1807	461	517	16			
1	D	342	Total	C	N	O	S	0	0	0
			2801	1807	461	517	16			

- Molecule 2 is N-ACETYL-D-GLUCOSAMINE (three-letter code: NAG) (formula: C₈H₁₅NO₆).



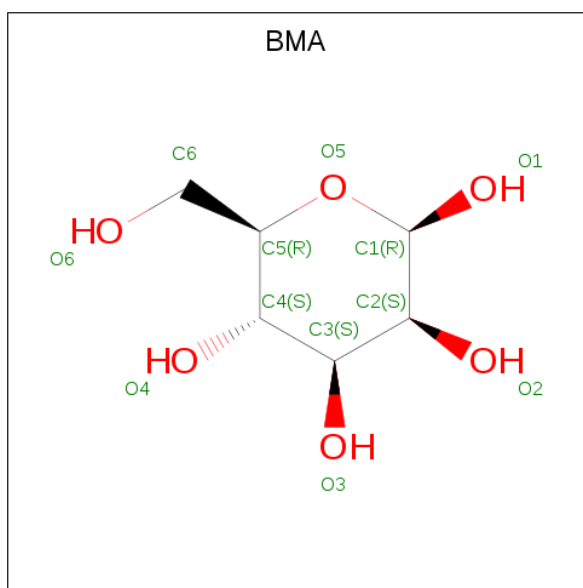
Mol	Chain	Residues	Atoms				ZeroOcc	AltConf
2	A	1	Total	C	N	O	0	0
			14	8	1	5		
2	A	1	Total	C	N	O	0	0
			14	8	1	5		

Continued on next page...

Continued from previous page...

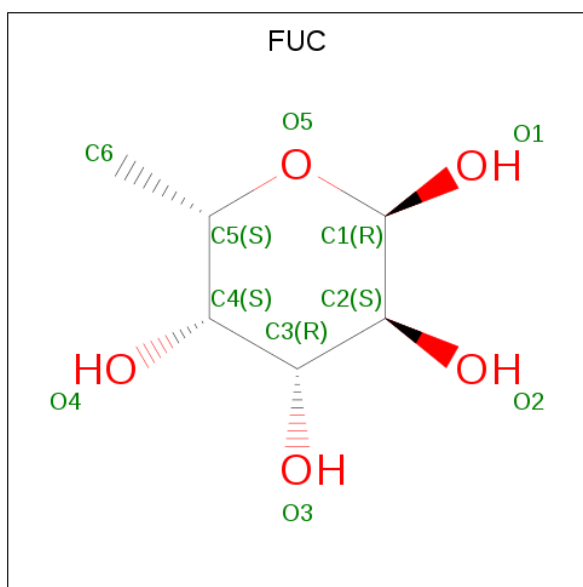
Mol	Chain	Residues	Atoms				ZeroOcc	AltConf
2	A	1	Total	C	N	O	0	0
			14	8	1	5		
2	A	1	Total	C	N	O	0	0
			14	8	1	5		
2	A	1	Total	C	N	O	0	0
			14	8	1	5		
2	A	1	Total	C	N	O	0	0
			14	8	1	5		
2	A	1	Total	C	N	O	0	0
			14	8	1	5		
2	B	1	Total	C	N	O	0	0
			14	8	1	5		
2	B	1	Total	C	N	O	0	0
			14	8	1	5		
2	B	1	Total	C	N	O	0	0
			14	8	1	5		
2	B	1	Total	C	N	O	0	0
			14	8	1	5		
2	B	1	Total	C	N	O	0	0
			14	8	1	5		
2	B	1	Total	C	N	O	0	0
			14	8	1	5		
2	C	1	Total	C	N	O	0	0
			14	8	1	5		
2	C	1	Total	C	N	O	0	0
			14	8	1	5		
2	C	1	Total	C	N	O	0	0
			14	8	1	5		
2	C	1	Total	C	N	O	0	0
			14	8	1	5		
2	C	1	Total	C	N	O	0	0
			14	8	1	5		
2	D	1	Total	C	N	O	0	0
			14	8	1	5		
2	D	1	Total	C	N	O	0	0
			14	8	1	5		
2	D	1	Total	C	N	O	0	0
			14	8	1	5		
2	D	1	Total	C	N	O	0	0
			14	8	1	5		

- Molecule 3 is BETA-D-MANNOSE (three-letter code: BMA) (formula: $C_6H_{12}O_6$).



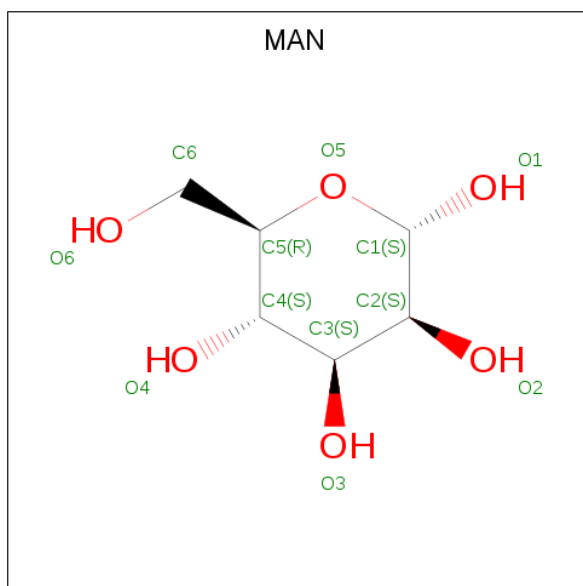
Mol	Chain	Residues	Atoms			ZeroOcc	AltConf
3	A	1	Total	C	O	0	0
			11	6	5		
3	A	1	Total	C	O	0	0
			11	6	5		
3	B	1	Total	C	O	0	0
			11	6	5		
3	B	1	Total	C	O	0	0
			11	6	5		
3	B	1	Total	C	O	0	0
			11	6	5		
3	C	1	Total	C	O	0	0
			11	6	5		
3	C	1	Total	C	O	0	0
			11	6	5		
3	D	1	Total	C	O	0	0
			11	6	5		
3	D	1	Total	C	O	0	0
			11	6	5		

- Molecule 4 is ALPHA-L-FUCOSE (three-letter code: FUC) (formula: $C_6H_{12}O_5$).



Mol	Chain	Residues	Atoms			ZeroOcc	AltConf
4	A	1	Total	C	O	0	0
			10	6	4		

- Molecule 5 is ALPHA-D-MANNOSE (three-letter code: MAN) (formula: $C_6H_{12}O_6$).



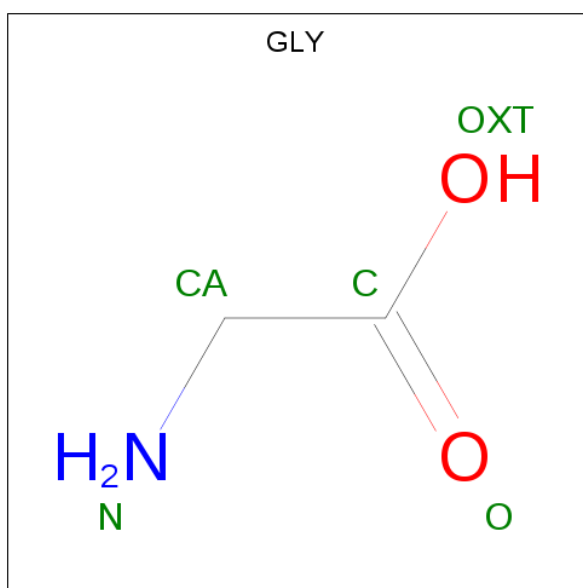
Mol	Chain	Residues	Atoms			ZeroOcc	AltConf
5	A	1	Total	C	O	0	0
			11	6	5		
5	A	1	Total	C	O	0	0
			11	6	5		
5	A	1	Total	C	O	0	0
			11	6	5		

Continued on next page...

Continued from previous page...

Mol	Chain	Residues	Atoms			ZeroOcc	AltConf
5	B	1	Total	C	O	0	0
			11	6	5		
5	B	1	Total	C	O	0	0
			11	6	5		
5	B	1	Total	C	O	0	0
			11	6	5		
5	B	1	Total	C	O	0	0
			11	6	5		
5	D	1	Total	C	O	0	0
			11	6	5		

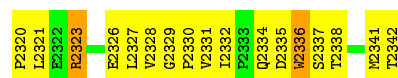
- Molecule 6 is GLYCINE (three-letter code: GLY) (formula: $C_2H_5NO_2$).



Mol	Chain	Residues	Atoms				ZeroOcc	AltConf
6	A	1	Total	C	N	O	0	0
			5	2	1	2		
6	B	1	Total	C	N	O	0	0
			5	2	1	2		
6	C	1	Total	C	N	O	0	0
			5	2	1	2		
6	D	1	Total	C	N	O	0	0
			5	2	1	2		

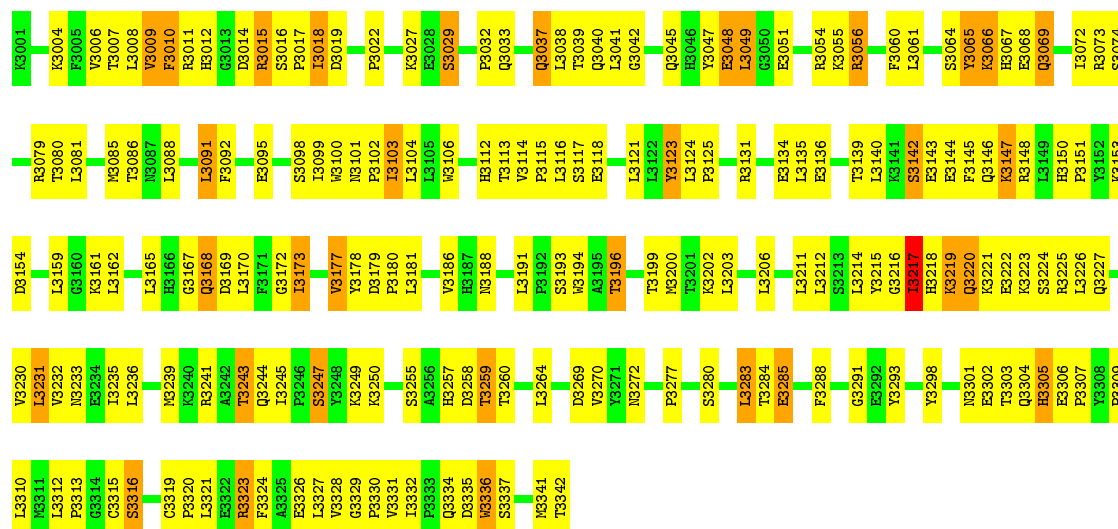
- Molecule 7 is water.

Mol	Chain	Residues	Atoms		ZeroOcc	AltConf
7	A	163	Total 163	O 163	0	0
7	B	188	Total 188	O 188	0	0
7	C	144	Total 144	O 144	0	0
7	D	138	Total 138	O 138	0	0



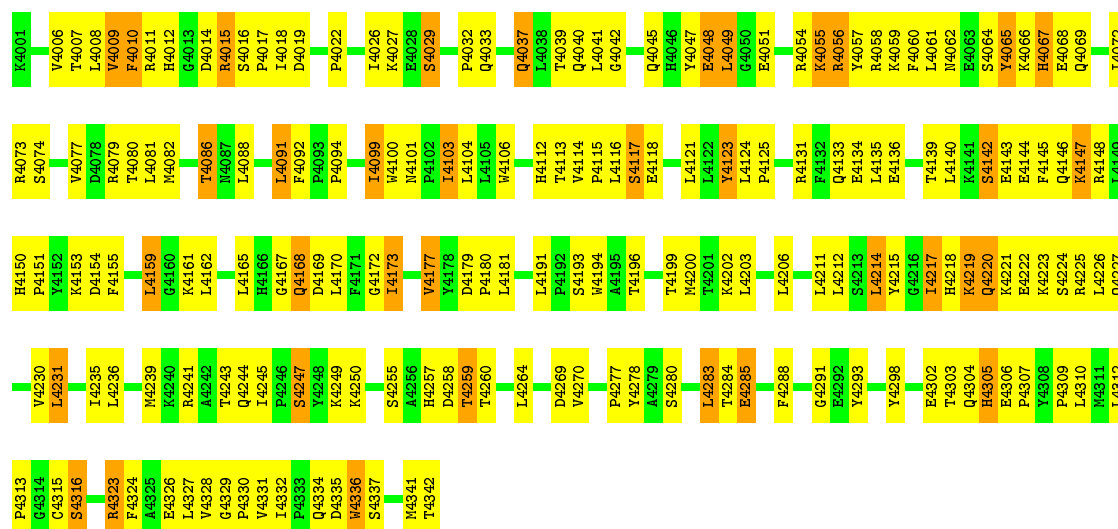
• Molecule 1: PROSTATIC ACID PHOSPHATASE

Chain C: 43% 47% 10%



• Molecule 1: PROSTATIC ACID PHOSPHATASE

Chain D: 45% 44% 11%



4 Data and refinement statistics

Xtriage (Phenix) and EDS were not executed - this section is therefore incomplete.

Property	Value	Source
Space group	P 21 21 21	Depositor
Cell constants a, b, c, α , β , γ	126.33Å 207.96Å 73.02Å 90.00° 90.00° 90.00°	Depositor
Resolution (Å)	8.00 – 3.20	Depositor
% Data completeness (in resolution range)	91.7 (8.00-3.20)	Depositor
R_{merge}	0.09	Depositor
R_{sym}	(Not available)	Depositor
Refinement program	X-PLOR 3.851	Depositor
R, R_{free}	0.157 , 0.274	Depositor
Estimated twinning fraction	No twinning to report.	Xtriage
Total number of atoms	12376	wwPDB-VP
Average B, all atoms (Å ²)	45.0	wwPDB-VP

5 Model quality [i](#)

5.1 Standard geometry [i](#)

Bond lengths and bond angles in the following residue types are not validated in this section: FUC, BMA, NAG, MAN

The Z score for a bond length (or angle) is the number of standard deviations the observed value is removed from the expected value. A bond length (or angle) with $|Z| > 5$ is considered an outlier worth inspection. RMSZ is the root-mean-square of all Z scores of the bond lengths (or angles).

Mol	Chain	Bond lengths		Bond angles	
		RMSZ	$\# Z > 5$	RMSZ	$\# Z > 5$
1	A	0.33	0/2883	0.53	0/3914
1	B	0.32	0/2883	0.53	0/3914
1	C	0.33	0/2883	0.53	0/3914
1	D	0.33	0/2883	0.54	0/3914
All	All	0.33	0/11532	0.53	0/15656

There are no bond length outliers.

There are no bond angle outliers.

There are no chirality outliers.

There are no planarity outliers.

5.2 Too-close contacts [i](#)

In the following table, the Non-H and H(model) columns list the number of non-hydrogen atoms and hydrogen atoms in the chain respectively. The H(added) column lists the number of hydrogen atoms added and optimized by MolProbity. The Clashes column lists the number of clashes within the asymmetric unit, whereas Symm-Clashes lists symmetry related clashes.

Mol	Chain	Non-H	H(model)	H(added)	Clashes	Symm-Clashes
1	A	2801	0	2745	141	0
1	B	2801	0	2745	139	0
1	C	2801	0	2745	154	0
1	D	2801	0	2745	135	0
2	A	98	0	86	10	0
2	B	84	0	72	9	0
2	C	70	0	61	3	0
2	D	70	0	61	3	0
3	A	22	0	17	1	0

Continued on next page...

Continued from previous page...

Mol	Chain	Non-H	H(model)	H(added)	Clashes	Symm-Clashes
3	B	33	0	27	2	0
3	C	22	0	20	1	0
3	D	22	0	19	0	0
4	A	10	0	10	3	0
5	A	33	0	28	1	0
5	B	44	0	39	0	0
5	D	11	0	10	0	0
6	A	5	0	2	1	0
6	B	5	0	2	0	0
6	C	5	0	2	1	0
6	D	5	0	2	2	0
7	A	163	0	0	11	0
7	B	188	0	0	12	0
7	C	144	0	0	10	0
7	D	138	0	0	11	0
All	All	12376	0	11438	561	0

The all-atom clashscore is defined as the number of clashes found per 1000 atoms (including hydrogen atoms). The all-atom clashscore for this structure is 24.

The worst 5 of 561 close contacts within the same asymmetric unit are listed below, sorted by their clash magnitude.

Atom-1	Atom-2	Interatomic distance (Å)	Clash overlap (Å)
1:C:3159:LEU:HD11	1:C:3203:LEU:HD21	1.39	1.05
1:D:4159:LEU:HD11	1:D:4203:LEU:HD21	1.42	1.02
1:B:2200:MET:HA	1:B:2200:MET:HE2	1.44	0.99
1:A:1159:LEU:HD11	1:A:1203:LEU:HD21	1.44	0.99
1:B:2159:LEU:HD11	1:B:2203:LEU:HD21	1.41	0.98

There are no symmetry-related clashes.

5.3 Torsion angles [i](#)

5.3.1 Protein backbone [i](#)

In the following table, the Percentiles column shows the percent Ramachandran outliers of the chain as a percentile score with respect to all X-ray entries followed by that with respect to entries of similar resolution.

The Analysed column shows the number of residues for which the backbone conformation was analysed, and the total number of residues.

Mol	Chain	Analysed	Favoured	Allowed	Outliers	Percentiles	
1	A	340/342 (99%)	298 (88%)	33 (10%)	9 (3%)	6	36
1	B	340/342 (99%)	298 (88%)	34 (10%)	8 (2%)	7	39
1	C	340/342 (99%)	298 (88%)	34 (10%)	8 (2%)	7	39
1	D	340/342 (99%)	301 (88%)	30 (9%)	9 (3%)	6	36
All	All	1360/1368 (99%)	1195 (88%)	131 (10%)	34 (2%)	6	38

5 of 34 Ramachandran outliers are listed below:

Mol	Chain	Res	Type
1	A	1065	TYR
1	A	1217	ILE
1	A	1220	GLN
1	B	2065	TYR
1	B	2217	ILE

5.3.2 Protein sidechains ⓘ

In the following table, the Percentiles column shows the percent sidechain outliers of the chain as a percentile score with respect to all X-ray entries followed by that with respect to entries of similar resolution.

The Analysed column shows the number of residues for which the sidechain conformation was analysed, and the total number of residues.

Mol	Chain	Analysed	Rotameric	Outliers	Percentiles	
1	A	314/314 (100%)	252 (80%)	62 (20%)	1	8
1	B	314/314 (100%)	251 (80%)	63 (20%)	1	7
1	C	314/314 (100%)	255 (81%)	59 (19%)	2	9
1	D	314/314 (100%)	252 (80%)	62 (20%)	1	8
All	All	1256/1256 (100%)	1010 (80%)	246 (20%)	1	8

5 of 246 residues with a non-rotameric sidechain are listed below:

Mol	Chain	Res	Type
1	B	2247	SER
1	C	3051	GLU
1	D	4219	LYS
1	B	2259	THR
1	B	2337	SER

Some sidechains can be flipped to improve hydrogen bonding and reduce clashes. 5 of 18 such sidechains are listed below:

Mol	Chain	Res	Type
1	B	2265	GLN
1	B	2334	GLN
1	D	4037	GLN
1	B	2237	ASN
1	B	2244	GLN

5.3.3 RNA [i](#)

There are no RNA molecules in this entry.

5.4 Non-standard residues in protein, DNA, RNA chains [i](#)

There are no non-standard protein/DNA/RNA residues in this entry.

5.5 Carbohydrates [i](#)

There are no carbohydrates in this entry.

5.6 Ligand geometry [i](#)

45 ligands are modelled in this entry.

In the following table, the Counts columns list the number of bonds (or angles) for which Mogul statistics could be retrieved, the number of bonds (or angles) that are observed in the model and the number of bonds (or angles) that are defined in the Chemical Component Dictionary. The Link column lists molecule types, if any, to which the group is linked. The Z score for a bond length (or angle) is the number of standard deviations the observed value is removed from the expected value. A bond length (or angle) with $|Z| > 2$ is considered an outlier worth inspection. RMSZ is the root-mean-square of all Z scores of the bond lengths (or angles).

Mol	Type	Chain	Res	Link	Bond lengths			Bond angles		
					Counts	RMSZ	$\# Z > 2$	Counts	RMSZ	$\# Z > 2$
6	GLY	A	1350	-	1,4,4	0.82	0	0,4,4	0.00	-
2	NAG	A	1361	1	14,14,15	0.56	0	15,19,21	0.76	1 (6%)
2	NAG	A	1371	1,2,4	14,14,15	0.50	0	15,19,21	1.09	1 (6%)
2	NAG	A	1372	3,2	14,14,15	0.60	0	15,19,21	0.87	1 (6%)
3	BMA	A	1373	2,5	11,11,12	0.56	0	13,15,17	0.61	0
4	FUC	A	1374	2	9,10,11	0.56	0	13,14,16	0.50	0

Mol	Type	Chain	Res	Link	Bond lengths			Bond angles		
					Counts	RMSZ	# Z > 2	Counts	RMSZ	# Z > 2
5	MAN	A	1375	3,2	11,11,12	0.80	0	13,15,17	0.88	0
2	NAG	A	1376	5	14,14,15	0.49	0	15,19,21	0.81	1 (6%)
5	MAN	A	1378	3,2	11,11,12	0.71	0	13,15,17	0.67	1 (7%)
2	NAG	A	1379	5	14,14,15	0.45	0	15,19,21	0.82	1 (6%)
2	NAG	A	1381	1,2	14,14,15	0.57	0	15,19,21	0.69	0
2	NAG	A	1382	3,2	14,14,15	0.79	0	15,19,21	1.38	2 (13%)
3	BMA	A	1383	2,5	11,11,12	0.57	0	13,15,17	1.04	1 (7%)
5	MAN	A	1384	3	11,11,12	0.73	0	13,15,17	0.63	0
6	GLY	B	2350	-	1,4,4	0.75	0	0,4,4	0.00	-
2	NAG	B	2361	1,2	14,14,15	0.48	0	15,19,21	1.03	1 (6%)
2	NAG	B	2362	3,2	14,14,15	0.59	0	15,19,21	0.65	0
3	BMA	B	2363	2	11,11,12	0.54	0	13,15,17	0.21	0
2	NAG	B	2371	1,2	14,14,15	0.64	0	15,19,21	0.67	0
2	NAG	B	2372	3,2	14,14,15	0.63	0	15,19,21	0.84	0
3	BMA	B	2373	2,5	11,11,12	0.65	0	13,15,17	0.35	0
5	MAN	B	2378	3	11,11,12	0.66	0	13,15,17	0.69	1 (7%)
2	NAG	B	2381	1,2	14,14,15	0.46	0	15,19,21	0.66	0
2	NAG	B	2382	3,2	14,14,15	0.63	0	15,19,21	1.00	2 (13%)
3	BMA	B	2383	2,5	11,11,12	0.72	0	13,15,17	0.44	0
5	MAN	B	2384	3	11,11,12	0.59	0	13,15,17	0.95	1 (7%)
5	MAN	B	2386	3,5	11,11,12	0.75	0	13,15,17	0.82	1 (7%)
5	MAN	B	2387	5	11,11,12	0.70	0	13,15,17	0.73	0
6	GLY	C	3350	-	1,4,4	0.87	0	0,4,4	0.00	-
2	NAG	C	3361	1	14,14,15	0.56	0	15,19,21	0.87	1 (6%)
2	NAG	C	3371	1,2	14,14,15	0.65	0	15,19,21	0.89	1 (6%)
2	NAG	C	3372	3,2	14,14,15	0.66	0	15,19,21	0.87	0
3	BMA	C	3373	2	11,11,12	0.53	0	13,15,17	0.35	0
2	NAG	C	3381	1,2	14,14,15	0.67	0	15,19,21	1.36	4 (26%)
2	NAG	C	3382	3,2	14,14,15	0.89	0	15,19,21	1.09	2 (13%)
3	BMA	C	3383	2	11,11,12	0.57	0	13,15,17	0.61	0
6	GLY	D	4350	-	1,4,4	0.81	0	0,4,4	0.00	-
2	NAG	D	4361	1,2	14,14,15	0.87	0	15,19,21	0.99	0
2	NAG	D	4362	3,2	14,14,15	0.66	0	15,19,21	1.00	1 (6%)
3	BMA	D	4363	2,5	11,11,12	0.79	0	13,15,17	0.57	0
5	MAN	D	4366	3	11,11,12	0.59	0	13,15,17	0.86	1 (7%)
2	NAG	D	4371	1	14,14,15	0.53	0	15,19,21	0.66	0
2	NAG	D	4381	1,2	14,14,15	0.62	0	15,19,21	1.10	2 (13%)
2	NAG	D	4382	3,2	14,14,15	0.69	0	15,19,21	0.76	0
3	BMA	D	4383	2	11,11,12	0.56	0	13,15,17	0.47	0

In the following table, the Chirals column lists the number of chiral outliers, the number of chiral centers analysed, the number of these observed in the model and the number defined in the Chemical Component Dictionary. Similar counts are reported in the Torsion and Rings columns. '-' means no outliers of that kind were identified.

Mol	Type	Chain	Res	Link	Chirals	Torsions	Rings
6	GLY	A	1350	-	-	0/0/2/2	0/0/0/0
2	NAG	A	1361	1	-	0/6/23/26	0/1/1/1
2	NAG	A	1371	1,2,4	-	0/6/23/26	0/1/1/1
2	NAG	A	1372	3,2	-	0/6/23/26	0/1/1/1
3	BMA	A	1373	2,5	-	0/2/19/22	0/1/1/1
4	FUC	A	1374	2	-	0/0/17/20	0/1/1/1
5	MAN	A	1375	3,2	-	0/2/19/22	0/1/1/1
2	NAG	A	1376	5	-	0/6/23/26	0/1/1/1
5	MAN	A	1378	3,2	-	0/2/19/22	0/1/1/1
2	NAG	A	1379	5	-	0/6/23/26	0/1/1/1
2	NAG	A	1381	1,2	-	0/6/23/26	0/1/1/1
2	NAG	A	1382	3,2	-	0/6/23/26	0/1/1/1
3	BMA	A	1383	2,5	-	0/2/19/22	0/1/1/1
5	MAN	A	1384	3	-	0/2/19/22	0/1/1/1
6	GLY	B	2350	-	-	0/0/2/2	0/0/0/0
2	NAG	B	2361	1,2	-	0/6/23/26	0/1/1/1
2	NAG	B	2362	3,2	-	0/6/23/26	0/1/1/1
3	BMA	B	2363	2	-	0/2/19/22	0/1/1/1
2	NAG	B	2371	1,2	-	0/6/23/26	0/1/1/1
2	NAG	B	2372	3,2	-	0/6/23/26	0/1/1/1
3	BMA	B	2373	2,5	-	0/2/19/22	0/1/1/1
5	MAN	B	2378	3	-	0/2/19/22	0/1/1/1
2	NAG	B	2381	1,2	-	0/6/23/26	0/1/1/1
2	NAG	B	2382	3,2	-	0/6/23/26	0/1/1/1
3	BMA	B	2383	2,5	-	0/2/19/22	0/1/1/1
5	MAN	B	2384	3	-	0/2/19/22	0/1/1/1
5	MAN	B	2386	3,5	-	0/2/19/22	0/1/1/1
5	MAN	B	2387	5	-	0/2/19/22	0/1/1/1
6	GLY	C	3350	-	-	0/0/2/2	0/0/0/0
2	NAG	C	3361	1	-	0/6/23/26	0/1/1/1
2	NAG	C	3371	1,2	-	0/6/23/26	0/1/1/1
2	NAG	C	3372	3,2	-	0/6/23/26	0/1/1/1
3	BMA	C	3373	2	-	0/2/19/22	0/1/1/1
2	NAG	C	3381	1,2	-	0/6/23/26	0/1/1/1
2	NAG	C	3382	3,2	-	0/6/23/26	0/1/1/1
3	BMA	C	3383	2	-	0/2/19/22	0/1/1/1
6	GLY	D	4350	-	-	0/0/2/2	0/0/0/0
2	NAG	D	4361	1,2	-	0/6/23/26	0/1/1/1
2	NAG	D	4362	3,2	-	0/6/23/26	0/1/1/1

Continued on next page...

Continued from previous page...

Mol	Type	Chain	Res	Link	Chirals	Torsions	Rings
3	BMA	D	4363	2,5	-	0/2/19/22	0/1/1/1
5	MAN	D	4366	3	-	0/2/19/22	0/1/1/1
2	NAG	D	4371	1	-	0/6/23/26	0/1/1/1
2	NAG	D	4381	1,2	-	0/6/23/26	0/1/1/1
2	NAG	D	4382	3,2	-	0/6/23/26	0/1/1/1
3	BMA	D	4383	2	-	0/2/19/22	0/1/1/1

There are no bond length outliers.

The worst 5 of 27 bond angle outliers are listed below:

Mol	Chain	Res	Type	Atoms	Z	Observed(°)	Ideal(°)
2	A	1382	NAG	C2-N2-C7	-2.92	118.68	122.94
2	B	2361	NAG	C4-C3-C2	-2.91	106.75	111.02
2	A	1382	NAG	C4-C3-C2	-2.80	106.92	111.02
2	C	3381	NAG	O5-C1-C2	-2.64	107.80	111.47
3	A	1383	BMA	C1-C2-C3	-2.57	106.40	109.65

There are no chirality outliers.

There are no torsion outliers.

There are no ring outliers.

22 monomers are involved in 29 short contacts:

Mol	Chain	Res	Type	Clashes	Symm-Clashes
6	A	1350	GLY	1	0
2	A	1371	NAG	4	0
2	A	1372	NAG	4	0
4	A	1374	FUC	3	0
5	A	1378	MAN	1	0
2	A	1379	NAG	3	0
2	A	1382	NAG	1	0
3	A	1383	BMA	1	0
2	B	2361	NAG	1	0
2	B	2362	NAG	3	0
2	B	2372	NAG	3	0
3	B	2373	BMA	2	0
2	B	2381	NAG	2	0
2	B	2382	NAG	2	0
6	C	3350	GLY	1	0
2	C	3371	NAG	2	0
2	C	3372	NAG	1	0

Continued on next page...

Continued from previous page...

Mol	Chain	Res	Type	Clashes	Symm-Clashes
3	C	3373	BMA	1	0
6	D	4350	GLY	2	0
2	D	4361	NAG	2	0
2	D	4362	NAG	2	0
2	D	4382	NAG	1	0

5.7 Other polymers [i](#)

There are no such residues in this entry.

5.8 Polymer linkage issues [i](#)

There are no chain breaks in this entry.

6 Fit of model and data ⓘ

6.1 Protein, DNA and RNA chains ⓘ

EDS was not executed - this section is therefore empty.

6.2 Non-standard residues in protein, DNA, RNA chains ⓘ

EDS was not executed - this section is therefore empty.

6.3 Carbohydrates ⓘ

EDS was not executed - this section is therefore empty.

6.4 Ligands ⓘ

EDS was not executed - this section is therefore empty.

6.5 Other polymers ⓘ

EDS was not executed - this section is therefore empty.