



Full wwPDB X-ray Structure Validation Report ⓘ

Jun 21, 2017 – 12:17 AM EDT

PDB ID : 4D09
Title : PDE2a catalytic domain in complex with a brain penetrant inhibitor
Authors : Buijnsters, P.; Andres, J.I.; DeAngelis, M.; Langlois, X.; Rombouts, F.; Sanderson, W.; Tresadern, G.; Trabanco, A.; VanHoof, G.; VanRoosbroeck, Y.
Deposited on : 2014-04-24
Resolution : 2.50 Å(reported)

This is a Full wwPDB X-ray Structure Validation Report for a publicly released PDB entry.

We welcome your comments at validation@mail.wwpdb.org

A user guide is available at

<http://wwpdb.org/validation/2016/XrayValidationReportHelp>

with specific help available everywhere you see the ⓘ symbol.

The following versions of software and data (see [references ⓘ](#)) were used in the production of this report:

MolProbity : 4.02b-467
Mogul : 1.7.2 (RC1), CSD as538be (2017)
Xtriage (Phenix) : 1.9-1692
EDS : rb-20029077
Percentile statistics : 20161228.v01 (using entries in the PDB archive December 28th 2016)
Refmac : 5.8.0135
CCP4 : 6.5.0
Ideal geometry (proteins) : Engh & Huber (2001)
Ideal geometry (DNA, RNA) : Parkinson et al. (1996)
Validation Pipeline (wwPDB-VP) : rb-20029077

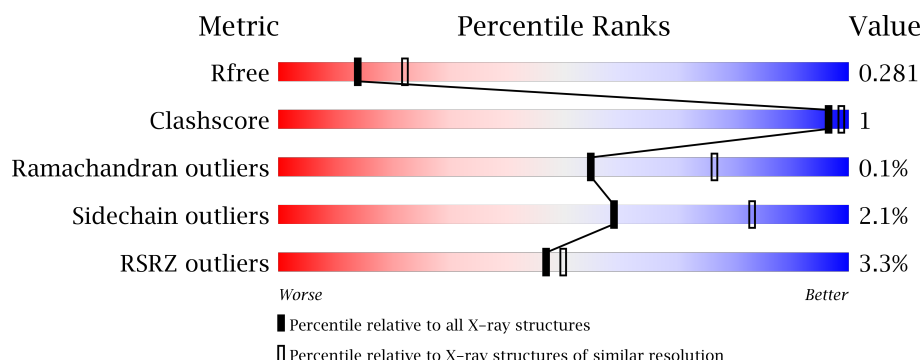
1 Overall quality at a glance

The following experimental techniques were used to determine the structure:

X-RAY DIFFRACTION

The reported resolution of this entry is 2.50 Å.

Percentile scores (ranging between 0-100) for global validation metrics of the entry are shown in the following graphic. The table shows the number of entries on which the scores are based.



Metric	Whole archive (#Entries)	Similar resolution (#Entries, resolution range(Å))
R_{free}	100719	3846 (2.50-2.50)
Clashscore	112137	4554 (2.50-2.50)
Ramachandran outliers	110173	4463 (2.50-2.50)
Sidechain outliers	110143	4465 (2.50-2.50)
RSRZ outliers	101464	3876 (2.50-2.50)

The table below summarises the geometric issues observed across the polymeric chains and their fit to the electron density. The red, orange, yellow and green segments on the lower bar indicate the fraction of residues that contain outliers for ≥ 3 , 2, 1 and 0 types of geometric quality criteria. A grey segment represents the fraction of residues that are not modelled. The numeric value for each fraction is indicated below the corresponding segment, with a dot representing fractions $\leq 5\%$. The upper red bar (where present) indicates the fraction of residues that have poor fit to the electron density. The numeric value is given above the bar.

Mol	Chain	Length	Quality of chain
1	A	353	<div> <div>0.1%</div> <div> <div></div> <div>92%</div> <div>6%</div> <div>• •</div> </div> </div>
1	B	353	<div> <div>2%</div> <div> <div></div> <div>90%</div> <div>6%</div> <div>•</div> </div> </div>
1	C	353	<div> <div>4%</div> <div> <div></div> <div>90%</div> <div>7%</div> <div>•</div> </div> </div>
1	D	353	<div> <div>5%</div> <div> <div></div> <div>90%</div> <div>8%</div> <div>•</div> </div> </div>

2 Entry composition

There are 5 unique types of molecules in this entry. The entry contains 11118 atoms, of which 0 are hydrogens and 0 are deuteriums.

In the tables below, the ZeroOcc column contains the number of atoms modelled with zero occupancy, the AltConf column contains the number of residues with at least one atom in alternate conformation and the Trace column contains the number of residues modelled with at most 2 atoms.

- Molecule 1 is a protein called CGMP-DEPENDENT 3', 5'-CYCLIC PHOSPHODIESTERASE.

Mol	Chain	Residues	Atoms					ZeroOcc	AltConf	Trace
1	A	340	Total	C	N	O	S	0	0	0
			2728	1739	463	503	23			
1	B	338	Total	C	N	O	S	0	0	0
			2721	1736	459	501	25			
1	C	329	Total	C	N	O	S	0	0	0
			2643	1686	447	486	24			
1	D	326	Total	C	N	O	S	0	0	0
			2633	1679	448	481	25			

There are 36 discrepancies between the modelled and reference sequences:

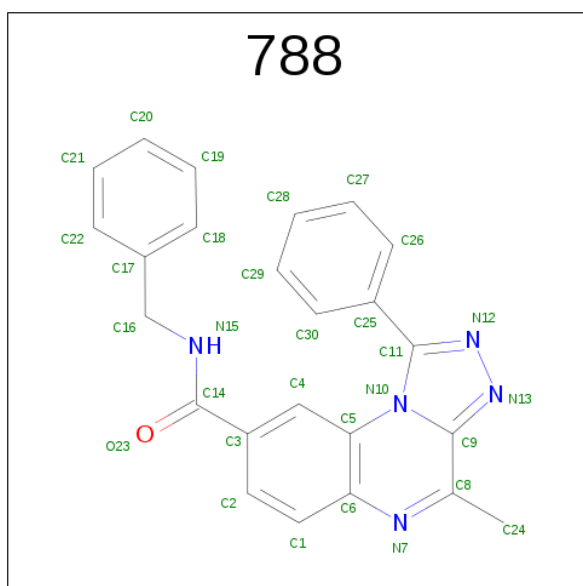
Chain	Residue	Modelled	Actual	Comment	Reference
A	576	MET	-	expression tag	UNP O00408
A	577	GLY	-	expression tag	UNP O00408
A	922	ARG	-	expression tag	UNP O00408
A	923	HIS	-	expression tag	UNP O00408
A	924	HIS	-	expression tag	UNP O00408
A	925	HIS	-	expression tag	UNP O00408
A	926	HIS	-	expression tag	UNP O00408
A	927	HIS	-	expression tag	UNP O00408
A	928	HIS	-	expression tag	UNP O00408
B	576	MET	-	expression tag	UNP O00408
B	577	GLY	-	expression tag	UNP O00408
B	922	ARG	-	expression tag	UNP O00408
B	923	HIS	-	expression tag	UNP O00408
B	924	HIS	-	expression tag	UNP O00408
B	925	HIS	-	expression tag	UNP O00408
B	926	HIS	-	expression tag	UNP O00408
B	927	HIS	-	expression tag	UNP O00408
B	928	HIS	-	expression tag	UNP O00408
C	576	MET	-	expression tag	UNP O00408
C	577	GLY	-	expression tag	UNP O00408
C	922	ARG	-	expression tag	UNP O00408

Continued on next page...

Continued from previous page...

Chain	Residue	Modelled	Actual	Comment	Reference
C	923	HIS	-	expression tag	UNP O00408
C	924	HIS	-	expression tag	UNP O00408
C	925	HIS	-	expression tag	UNP O00408
C	926	HIS	-	expression tag	UNP O00408
C	927	HIS	-	expression tag	UNP O00408
C	928	HIS	-	expression tag	UNP O00408
D	576	MET	-	expression tag	UNP O00408
D	577	GLY	-	expression tag	UNP O00408
D	922	ARG	-	expression tag	UNP O00408
D	923	HIS	-	expression tag	UNP O00408
D	924	HIS	-	expression tag	UNP O00408
D	925	HIS	-	expression tag	UNP O00408
D	926	HIS	-	expression tag	UNP O00408
D	927	HIS	-	expression tag	UNP O00408
D	928	HIS	-	expression tag	UNP O00408

- Molecule 2 is N-benzyl-4-methyl-1-phenyl[1,2,4]triazolo[4,3-a]quinoxaline-8-carboxamide (three-letter code: 788) (formula: C₂₄H₁₉N₅O).



Mol	Chain	Residues	Atoms				ZeroOcc	AltConf
2	A	1	Total	C	N	O	0	0
			30	24	5	1		
2	B	1	Total	C	N	O	0	0
			30	24	5	1		
2	C	1	Total	C	N	O	0	0
			30	24	5	1		

Continued on next page...

Continued from previous page...

Mol	Chain	Residues	Atoms				ZeroOcc	AltConf
2	D	1	Total	C	N	O	0	0
			30	24	5	1		

- Molecule 3 is ZINC ION (three-letter code: ZN) (formula: Zn).

Mol	Chain	Residues	Atoms		ZeroOcc	AltConf
3	B	1	Total	Zn	0	0
			1	1		
3	A	1	Total	Zn	0	0
			1	1		
3	D	1	Total	Zn	0	0
			1	1		
3	C	1	Total	Zn	0	0
			1	1		

- Molecule 4 is MAGNESIUM ION (three-letter code: MG) (formula: Mg).

Mol	Chain	Residues	Atoms		ZeroOcc	AltConf
4	B	1	Total	Mg	0	0
			1	1		
4	A	1	Total	Mg	0	0
			1	1		
4	D	1	Total	Mg	0	0
			1	1		
4	C	1	Total	Mg	0	0
			1	1		

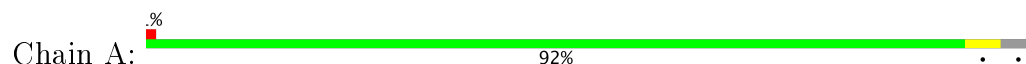
- Molecule 5 is water.

Mol	Chain	Residues	Atoms		ZeroOcc	AltConf
5	A	88	Total	O	0	0
			88	88		
5	B	84	Total	O	0	0
			84	84		
5	C	32	Total	O	0	0
			32	32		
5	D	61	Total	O	0	0
			61	61		

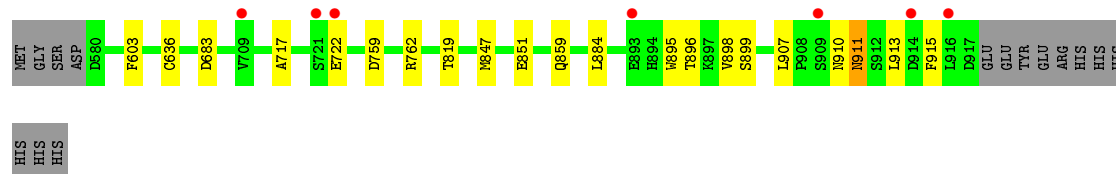
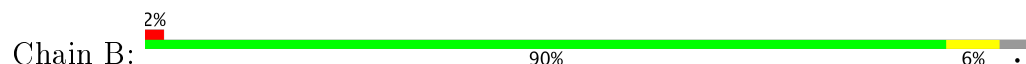
3 Residue-property plots [i](#)

These plots are drawn for all protein, RNA and DNA chains in the entry. The first graphic for a chain summarises the proportions of the various outlier classes displayed in the second graphic. The second graphic shows the sequence view annotated by issues in geometry and electron density. Residues are color-coded according to the number of geometric quality criteria for which they contain at least one outlier: green = 0, yellow = 1, orange = 2 and red = 3 or more. A red dot above a residue indicates a poor fit to the electron density ($RSRZ > 2$). Stretches of 2 or more consecutive residues without any outlier are shown as a green connector. Residues present in the sample, but not in the model, are shown in grey.

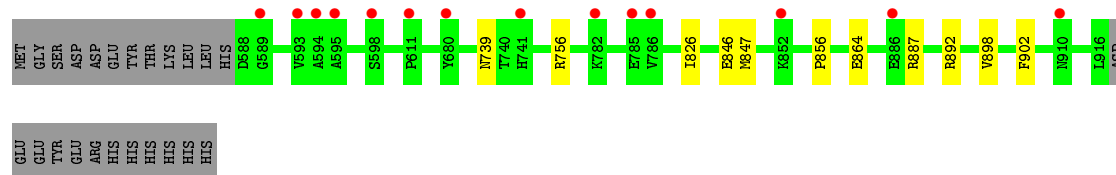
- Molecule 1: CGMP-DEPENDENT 3', 5'-CYCLIC PHOSPHODIESTERASE



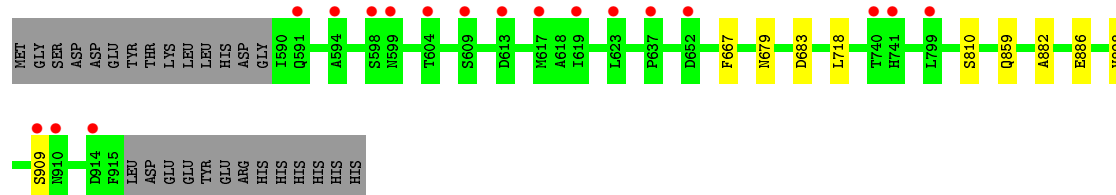
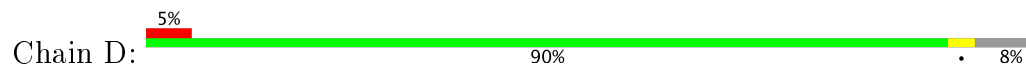
- Molecule 1: CGMP-DEPENDENT 3', 5'-CYCLIC PHOSPHODIESTERASE



- Molecule 1: CGMP-DEPENDENT 3', 5'-CYCLIC PHOSPHODIESTERASE



- Molecule 1: CGMP-DEPENDENT 3', 5'-CYCLIC PHOSPHODIESTERASE



4 Data and refinement statistics

Property	Value	Source
Space group	P 1	Depositor
Cell constants a, b, c, α , β , γ	56.14Å 73.43Å 91.62Å 109.37° 91.82° 91.05°	Depositor
Resolution (Å)	19.77 – 2.50 19.77 – 2.50	Depositor EDS
% Data completeness (in resolution range)	93.7 (19.77-2.50) 84.0 (19.77-2.50)	Depositor EDS
R_{merge}	0.10	Depositor
R_{sym}	(Not available)	Depositor
$\langle I/\sigma(I) \rangle$ ¹	2.01 (at 2.50Å)	Xtriage
Refinement program	REFMAC	Depositor
R, R_{free}	0.206 , 0.277 0.211 , 0.281	Depositor DCC
R_{free} test set	2266 reflections (5.34%)	DCC
Wilson B-factor (Å ²)	29.2	Xtriage
Anisotropy	0.149	Xtriage
Bulk solvent k_{sol} (e/Å ³), B_{sol} (Å ²)	0.36 , 38.6	EDS
L-test for twinning ²	$\langle L \rangle = 0.47$, $\langle L^2 \rangle = 0.30$	Xtriage
Estimated twinning fraction	0.034 for h,-k,-l	Xtriage
F_o, F_c correlation	0.92	EDS
Total number of atoms	11118	wwPDB-VP
Average B, all atoms (Å ²)	31.0	wwPDB-VP

Xtriage's analysis on translational NCS is as follows: *The largest off-origin peak in the Patterson function is 7.20% of the height of the origin peak. No significant pseudotranslation is detected.*

¹Intensities estimated from amplitudes.

²Theoretical values of $\langle |L| \rangle$, $\langle L^2 \rangle$ for acentric reflections are 0.5, 0.333 respectively for untwinned datasets, and 0.375, 0.2 for perfectly twinned datasets.

5 Model quality [i](#)

5.1 Standard geometry [i](#)

Bond lengths and bond angles in the following residue types are not validated in this section: ZN, 788, MG

The Z score for a bond length (or angle) is the number of standard deviations the observed value is removed from the expected value. A bond length (or angle) with $|Z| > 5$ is considered an outlier worth inspection. RMSZ is the root-mean-square of all Z scores of the bond lengths (or angles).

Mol	Chain	Bond lengths		Bond angles	
		RMSZ	$\# Z > 5$	RMSZ	$\# Z > 5$
1	A	0.34	0/2795	0.52	0/3785
1	B	0.35	0/2788	0.53	0/3773
1	C	0.34	0/2708	0.49	0/3665
1	D	0.33	0/2698	0.52	0/3649
All	All	0.34	0/10989	0.52	0/14872

There are no bond length outliers.

There are no bond angle outliers.

There are no chirality outliers.

There are no planarity outliers.

5.2 Too-close contacts [i](#)

In the following table, the Non-H and H(model) columns list the number of non-hydrogen atoms and hydrogen atoms in the chain respectively. The H(added) column lists the number of hydrogen atoms added and optimized by MolProbity. The Clashes column lists the number of clashes within the asymmetric unit, whereas Symm-Clashes lists symmetry related clashes.

Mol	Chain	Non-H	H(model)	H(added)	Clashes	Symm-Clashes
1	A	2728	0	2602	8	0
1	B	2721	0	2610	10	0
1	C	2643	0	2535	3	0
1	D	2633	0	2540	3	0
2	A	30	0	19	3	0
2	B	30	0	19	2	0
2	C	30	0	19	1	0
2	D	30	0	19	0	0
3	A	1	0	0	0	0

Continued on next page...

Continued from previous page...

Mol	Chain	Non-H	H(model)	H(added)	Clashes	Symm-Clashes
3	B	1	0	0	0	0
3	C	1	0	0	0	0
3	D	1	0	0	0	0
4	A	1	0	0	0	0
4	B	1	0	0	0	0
4	C	1	0	0	0	0
4	D	1	0	0	0	0
5	A	88	0	0	0	0
5	B	84	0	0	0	0
5	C	32	0	0	0	0
5	D	61	0	0	1	0
All	All	11118	0	10363	25	0

The all-atom clashscore is defined as the number of clashes found per 1000 atoms (including hydrogen atoms). The all-atom clashscore for this structure is 1.

All (25) close contacts within the same asymmetric unit are listed below, sorted by their clash magnitude.

Atom-1	Atom-2	Interatomic distance (Å)	Clash overlap (Å)
1:A:847:MET:HE1	2:A:1:788:H2	1.84	0.59
1:A:762:ARG:HG3	1:B:717:ALA:HB1	1.89	0.54
1:B:895:TRP:O	1:B:899:SER:N	2.41	0.53
1:C:864:GLU:HG3	1:C:892:ARG:HD2	1.93	0.51
1:B:847:MET:HE1	2:B:1:788:H2	1.93	0.51
2:A:1:788:C30	2:A:1:788:H4	2.42	0.50
1:B:910:ASN:O	1:B:911:ASN:HB2	2.12	0.49
1:B:907:LEU:HD23	1:B:913:LEU:HD21	1.95	0.48
1:C:864:GLU:CG	1:C:892:ARG:HD2	2.44	0.47
1:D:882:ALA:O	1:D:886:GLU:HG2	2.15	0.47
1:D:859:GLN:NE2	5:D:2049:HOH:O	2.40	0.46
1:A:845:MET:O	1:A:846:GLU:C	2.54	0.45
1:B:603:PHE:CD1	1:B:884:LEU:HD21	2.51	0.45
1:A:847:MET:CE	2:A:1:788:H2	2.46	0.44
1:A:603:PHE:HA	1:A:670:LEU:HD13	1.99	0.43
1:B:895:TRP:HA	1:B:898:VAL:HG12	2.01	0.43
1:B:907:LEU:CD2	1:B:913:LEU:HD21	2.48	0.43
2:C:1:788:C30	2:C:1:788:H4	2.49	0.42
1:C:856:PRO:HG3	1:C:902:PHE:CD1	2.55	0.42
1:A:788:TYR:CE1	1:A:799:LEU:HD22	2.55	0.41
1:B:759:ASP:OD1	1:B:762:ARG:NH2	2.53	0.41
1:A:863:MET:HA	1:A:867:ALA:HB3	2.02	0.41

Continued on next page...

Continued from previous page...

Atom-1	Atom-2	Interatomic distance (Å)	Clash overlap (Å)
1:B:859:GLN:OE1	2:B:1:788:H241	2.20	0.41
1:D:667:PHE:CD1	1:D:810:SER:HB2	2.56	0.40
1:A:917:ASP:O	1:A:918:GLU:CG	2.70	0.40

There are no symmetry-related clashes.

5.3 Torsion angles [i](#)

5.3.1 Protein backbone [i](#)

In the following table, the Percentiles column shows the percent Ramachandran outliers of the chain as a percentile score with respect to all X-ray entries followed by that with respect to entries of similar resolution.

The Analysed column shows the number of residues for which the backbone conformation was analysed, and the total number of residues.

Mol	Chain	Analysed	Favoured	Allowed	Outliers	Percentiles	
1	A	338/353 (96%)	328 (97%)	10 (3%)	0	100	100
1	B	336/353 (95%)	320 (95%)	15 (4%)	1 (0%)	44	66
1	C	327/353 (93%)	317 (97%)	10 (3%)	0	100	100
1	D	324/353 (92%)	313 (97%)	11 (3%)	0	100	100
All	All	1325/1412 (94%)	1278 (96%)	46 (4%)	1 (0%)	55	76

All (1) Ramachandran outliers are listed below:

Mol	Chain	Res	Type
1	B	915	PHE

5.3.2 Protein sidechains [i](#)

In the following table, the Percentiles column shows the percent sidechain outliers of the chain as a percentile score with respect to all X-ray entries followed by that with respect to entries of similar resolution.

The Analysed column shows the number of residues for which the sidechain conformation was analysed, and the total number of residues.

Mol	Chain	Analysed	Rotameric	Outliers	Percentiles	
1	A	292/319 (92%)	287 (98%)	5 (2%)	66	87
1	B	294/319 (92%)	287 (98%)	7 (2%)	54	80
1	C	285/319 (89%)	278 (98%)	7 (2%)	53	79
1	D	286/319 (90%)	281 (98%)	5 (2%)	66	87
All	All	1157/1276 (91%)	1133 (98%)	24 (2%)	59	83

All (24) residues with a non-rotameric sidechain are listed below:

Mol	Chain	Res	Type
1	A	627	ASN
1	A	759	ASP
1	A	762	ARG
1	A	826	ILE
1	A	843	ARG
1	B	636	CYS
1	B	683	ASP
1	B	722	GLU
1	B	819	THR
1	B	851	GLU
1	B	896	THR
1	B	911	ASN
1	C	739	ASN
1	C	756	ARG
1	C	826	ILE
1	C	846	GLU
1	C	847	MET
1	C	887	ARG
1	C	898	VAL
1	D	679	ASN
1	D	683	ASP
1	D	718	LEU
1	D	898	VAL
1	D	909	SER

Some sidechains can be flipped to improve hydrogen bonding and reduce clashes. All (7) such sidechains are listed below:

Mol	Chain	Res	Type
1	A	591	GLN
1	A	624	GLN
1	B	587	HIS

Continued on next page...

Continued from previous page...

Mol	Chain	Res	Type
1	B	708	GLN
1	B	910	ASN
1	B	911	ASN
1	D	859	GLN

5.3.3 RNA [i](#)

There are no RNA molecules in this entry.

5.4 Non-standard residues in protein, DNA, RNA chains [i](#)

There are no non-standard protein/DNA/RNA residues in this entry.

5.5 Carbohydrates [i](#)

There are no carbohydrates in this entry.

5.6 Ligand geometry [i](#)

Of 12 ligands modelled in this entry, 8 are monoatomic - leaving 4 for Mogul analysis.

In the following table, the Counts columns list the number of bonds (or angles) for which Mogul statistics could be retrieved, the number of bonds (or angles) that are observed in the model and the number of bonds (or angles) that are defined in the chemical component dictionary. The Link column lists molecule types, if any, to which the group is linked. The Z score for a bond length (or angle) is the number of standard deviations the observed value is removed from the expected value. A bond length (or angle) with $|Z| > 2$ is considered an outlier worth inspection. RMSZ is the root-mean-square of all Z scores of the bond lengths (or angles).

Mol	Type	Chain	Res	Link	Bond lengths			Bond angles		
					Counts	RMSZ	# $ Z > 2$	Counts	RMSZ	# $ Z > 2$
2	788	A	1	-	28,34,34	0.85	1 (3%)	35,48,48	0.64	1 (2%)
2	788	B	1	-	28,34,34	0.79	1 (3%)	35,48,48	0.68	2 (5%)
2	788	C	1	-	28,34,34	0.83	1 (3%)	35,48,48	0.66	2 (5%)
2	788	D	1	-	28,34,34	0.82	1 (3%)	35,48,48	0.66	1 (2%)

In the following table, the Chirals column lists the number of chiral outliers, the number of chiral centers analysed, the number of these observed in the model and the number defined in the chemical component dictionary. Similar counts are reported in the Torsion and Rings columns. '-' means no outliers of that kind were identified.

Mol	Type	Chain	Res	Link	Chirals	Torsions	Rings
2	788	A	1	-	-	0/13/13/13	0/5/5/5
2	788	B	1	-	-	0/13/13/13	0/5/5/5
2	788	C	1	-	-	0/13/13/13	0/5/5/5
2	788	D	1	-	-	0/13/13/13	0/5/5/5

All (4) bond length outliers are listed below:

Mol	Chain	Res	Type	Atoms	Z	Observed(Å)	Ideal(Å)
2	A	1	788	C8-N7	-2.66	1.29	1.32
2	D	1	788	C8-N7	-2.60	1.29	1.32
2	B	1	788	C8-N7	-2.33	1.29	1.32
2	C	1	788	C8-N7	-2.31	1.29	1.32

All (6) bond angle outliers are listed below:

Mol	Chain	Res	Type	Atoms	Z	Observed(°)	Ideal(°)
2	B	1	788	C24-C8-C9	-2.31	117.44	122.11
2	C	1	788	C24-C8-C9	-2.01	118.05	122.11
2	D	1	788	C24-C8-N7	2.38	119.54	115.69
2	A	1	788	C24-C8-N7	2.39	119.55	115.69
2	C	1	788	C24-C8-N7	2.41	119.58	115.69
2	B	1	788	C24-C8-N7	2.55	119.81	115.69

There are no chirality outliers.

There are no torsion outliers.

There are no ring outliers.

3 monomers are involved in 6 short contacts:

Mol	Chain	Res	Type	Clashes	Symm-Clashes
2	A	1	788	3	0
2	B	1	788	2	0
2	C	1	788	1	0

5.7 Other polymers ⓘ

There are no such residues in this entry.

5.8 Polymer linkage issues ⓘ

There are no chain breaks in this entry.

6 Fit of model and data ⓘ

6.1 Protein, DNA and RNA chains ⓘ

In the following table, the column labelled ‘#RSRZ> 2’ contains the number (and percentage) of RSRZ outliers, followed by percent RSRZ outliers for the chain as percentile scores relative to all X-ray entries and entries of similar resolution. The OWAB column contains the minimum, median, 95th percentile and maximum values of the occupancy-weighted average B-factor per residue. The column labelled ‘Q< 0.9’ lists the number of (and percentage) of residues with an average occupancy less than 0.9.

Mol	Chain	Analysed	<RSRZ>	#RSRZ>2	OWAB(Å ²)	Q<0.9
1	A	340/353 (96%)	-0.02	5 (1%) 74 75	15, 26, 40, 63	0
1	B	338/353 (95%)	0.04	7 (2%) 64 66	16, 28, 41, 59	0
1	C	329/353 (93%)	0.26	14 (4%) 36 38	20, 35, 54, 65	0
1	D	326/353 (92%)	0.16	18 (5%) 26 27	21, 32, 51, 78	0
All	All	1333/1412 (94%)	0.11	44 (3%) 47 50	15, 29, 50, 78	0

All (44) RSRZ outliers are listed below:

Mol	Chain	Res	Type	RSRZ
1	C	598	SER	3.6
1	D	598	SER	3.2
1	D	591	GLN	3.1
1	D	741	HIS	3.1
1	A	918	GLU	3.0
1	C	594	ALA	3.0
1	D	604	THR	3.0
1	C	782	LYS	2.9
1	D	637	PRO	2.9
1	C	786	VAL	2.9
1	C	595	ALA	2.8
1	D	617	MET	2.8
1	C	785	GLU	2.7
1	B	916	LEU	2.6
1	D	909	SER	2.6
1	D	594	ALA	2.5
1	D	613	ASP	2.5
1	B	721	SER	2.5
1	B	722	GLU	2.5
1	B	893	GLU	2.5
1	A	909	SER	2.5

Continued on next page...

Continued from previous page...

Mol	Chain	Res	Type	RSRZ
1	A	894	HIS	2.4
1	C	852	LYS	2.4
1	C	680	TYR	2.4
1	C	611	PRO	2.4
1	A	787	GLY	2.3
1	D	914	ASP	2.3
1	D	910	ASN	2.3
1	C	593	VAL	2.2
1	C	741	HIS	2.2
1	D	623	LEU	2.2
1	C	910	ASN	2.2
1	B	909	SER	2.2
1	D	609	SER	2.2
1	D	619	ILE	2.1
1	A	886	GLU	2.1
1	B	709	VAL	2.1
1	D	599	ASN	2.1
1	C	886	GLU	2.1
1	D	652	ASP	2.1
1	C	589	GLY	2.1
1	D	799	LEU	2.1
1	D	740	THR	2.0
1	B	914	ASP	2.0

6.2 Non-standard residues in protein, DNA, RNA chains [i](#)

There are no non-standard protein/DNA/RNA residues in this entry.

6.3 Carbohydrates [i](#)

There are no carbohydrates in this entry.

6.4 Ligands [i](#)

In the following table, the Atoms column lists the number of modelled atoms in the group and the number defined in the chemical component dictionary. LLDF column lists the quality of electron density of the group with respect to its neighbouring residues in protein, DNA or RNA chains. The B-factors column lists the minimum, median, 95th percentile and maximum values of B factors of atoms in the group. The column labelled 'Q< 0.9' lists the number of atoms with occupancy less than 0.9.

Mol	Type	Chain	Res	Atoms	RSCC	RSR	LLDF	B-factors(\AA^2)	Q<0.9
2	788	A	1	30/30	0.91	0.16	0.65	21,22,29,29	0
4	MG	D	1002	1/1	0.92	0.14	0.63	21,21,21,21	0
2	788	B	1	30/30	0.89	0.17	0.13	24,26,35,36	0
4	MG	B	1002	1/1	0.95	0.13	0.11	14,14,14,14	0
2	788	D	1	30/30	0.94	0.14	0.09	25,29,53,54	0
2	788	C	1	30/30	0.95	0.14	-0.10	25,26,35,36	0
4	MG	A	1002	1/1	0.98	0.07	-3.47	11,11,11,11	0
3	ZN	B	1001	1/1	0.99	0.03	-	24,24,24,24	0
3	ZN	C	1001	1/1	1.00	0.02	-	26,26,26,26	0
3	ZN	A	1001	1/1	1.00	0.02	-	26,26,26,26	0
3	ZN	D	1001	1/1	1.00	0.04	-	27,27,27,27	0
4	MG	C	1002	1/1	0.93	0.08	-	28,28,28,28	0

6.5 Other polymers [i](#)

There are no such residues in this entry.