



# Full wwPDB X-ray Structure Validation Report ⓘ

Feb 12, 2017 – 07:00 pm GMT

PDB ID : 1D58  
Title : THE MOLECULAR STRUCTURE OF A 4'-EPIADRIAMYCIN COMPLEX WITH D(TGATCA) AT 1.7 ANGSTROM RESOLUTION-COMPARISON WITH THE STRUCTURE OF 4'-EPIADRIAMYCIN D(TGTACA) AND D(CGATCG) COMPLEXES  
Authors : Langlois D'Estaintot, B.; Gallois, B.; Brown, T.; Hunter, W.N.  
Deposited on : 1992-02-20  
Resolution : 1.70 Å(reported)

This is a Full wwPDB X-ray Structure Validation Report for a publicly released PDB entry.

We welcome your comments at [validation@mail.wwpdb.org](mailto:validation@mail.wwpdb.org)

A user guide is available at

<http://wwpdb.org/validation/2016/XrayValidationReportHelp>

with specific help available everywhere you see the ⓘ symbol.

---

The following versions of software and data (see [references ⓘ](#)) were used in the production of this report:

MolProbity : 4.02b-467  
Mogul : 1.7.2 (RC1), CSD as538be (2017)  
Xtriage (Phenix) : 1.9-1692  
EDS : trunk28620  
Percentile statistics : 20161228.v01 (using entries in the PDB archive December 28th 2016)  
Refmac : 5.8.0135  
CCP4 : 6.5.0  
Ideal geometry (proteins) : Engh & Huber (2001)  
Ideal geometry (DNA, RNA) : Parkinson et al. (1996)  
Validation Pipeline (wwPDB-VP) : recalc28949

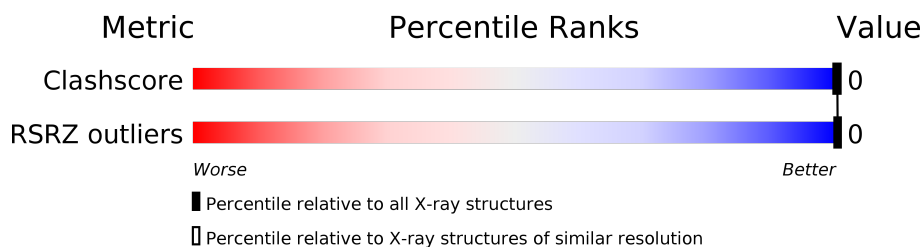
# 1 Overall quality at a glance

The following experimental techniques were used to determine the structure:

*X-RAY DIFFRACTION*

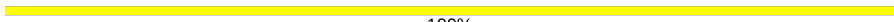
The reported resolution of this entry is 1.70 Å.

Percentile scores (ranging between 0-100) for global validation metrics of the entry are shown in the following graphic. The table shows the number of entries on which the scores are based.



Metric	Whole archive (#Entries)	Similar resolution (#Entries, resolution range(Å))
Clashscore	112137	3876 (1.70-1.70)
RSRZ outliers	101464	3491 (1.70-1.70)

The table below summarises the geometric issues observed across the polymeric chains and their fit to the electron density. The red, orange, yellow and green segments on the lower bar indicate the fraction of residues that contain outliers for  $\geq 3$ , 2, 1 and 0 types of geometric quality criteria. A grey segment represents the fraction of residues that are not modelled. The numeric value for each fraction is indicated below the corresponding segment, with a dot representing fractions  $\leq 5\%$ . The upper red bar (where present) indicates the fraction of residues that have poor fit to the electron density. The numeric value is given above the bar.

Mol	Chain	Length	Quality of chain
1	A	6	 100%

The following table lists non-polymeric compounds, carbohydrate monomers and non-standard residues in protein, DNA, RNA chains that are outliers for geometric or electron-density-fit criteria:

Mol	Type	Chain	Res	Chirality	Geometry	Clashes	Electron density
2	DM6	A	7	-	-	-	X

## 2 Entry composition [i](#)

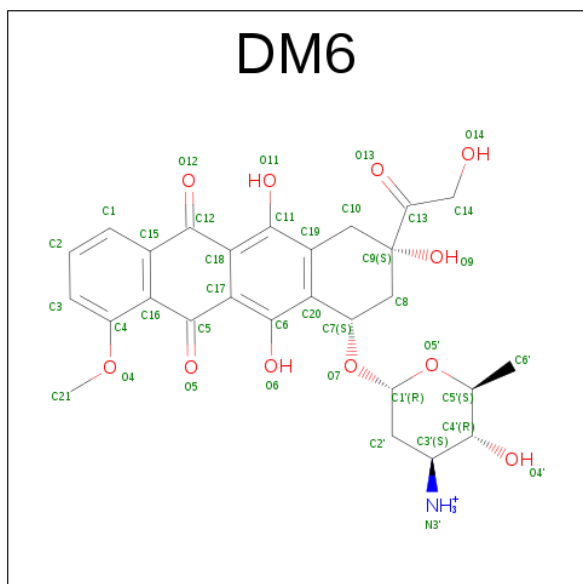
There are 3 unique types of molecules in this entry. The entry contains 193 atoms, of which 0 are hydrogens and 0 are deuteriums.

In the tables below, the ZeroOcc column contains the number of atoms modelled with zero occupancy, the AltConf column contains the number of residues with at least one atom in alternate conformation and the Trace column contains the number of residues modelled with at most 2 atoms.

- Molecule 1 is a DNA chain called DNA (5'-D(\*TP\*GP\*AP\*TP\*CP\*A)-3').

Mol	Chain	Residues	Atoms					ZeroOcc	AltConf	Trace
1	A	6	Total	C	N	O	P	0	0	0
			120	59	22	34	5			

- Molecule 2 is 4'-EPIDOXORUBICIN (three-letter code: DM6) (formula: C<sub>27</sub>H<sub>30</sub>NO<sub>11</sub>).



Mol	Chain	Residues	Atoms				ZeroOcc	AltConf
2	A	1	Total	C	N	O	0	0
			39	27	1	11		

- Molecule 3 is water.

Mol	Chain	Residues	Atoms	ZeroOcc	AltConf
3	A	34	Total O 34 34	0	0

### 3 Residue-property plots

These plots are drawn for all protein, RNA and DNA chains in the entry. The first graphic for a chain summarises the proportions of the various outlier classes displayed in the second graphic. The second graphic shows the sequence view annotated by issues in geometry and electron density. Residues are color-coded according to the number of geometric quality criteria for which they contain at least one outlier: green = 0, yellow = 1, orange = 2 and red = 3 or more. A red dot above a residue indicates a poor fit to the electron density ( $RSRZ > 2$ ). Stretches of 2 or more consecutive residues without any outlier are shown as a green connector. Residues present in the sample, but not in the model, are shown in grey.

- Molecule 1: DNA (5'-D(\*TP\*GP\*AP\*TP\*CP\*A)-3')

Chain A:  100%

T1	G2	A3	T4	C5	A6
----	----	----	----	----	----

## 4 Data and refinement statistics

Property	Value	Source
Space group	P 41 21 2	Depositor
Cell constants a, b, c, $\alpha$ , $\beta$ , $\gamma$	28.01Å 28.01Å 52.95Å 90.00° 90.00° 90.00°	Depositor
Resolution (Å)	7.00 – 1.70 6.94 – 1.70	Depositor EDS
% Data completeness (in resolution range)	(Not available) (7.00-1.70) 55.1 (6.94-1.70)	Depositor EDS
$R_{merge}$	(Not available)	Depositor
$R_{sym}$	(Not available)	Depositor
$\langle I/\sigma(I) \rangle$	-	Xtriage
Refinement program	X-PLOR	Depositor
R, $R_{free}$	0.202 , (Not available) 0.191 , (Not available)	Depositor DCC
$R_{free}$ test set	No test flags present.	DCC
Wilson B-factor (Å <sup>2</sup> )	12.5	Xtriage
Anisotropy	0.481	Xtriage
Bulk solvent $k_{sol}$ (e/Å <sup>3</sup> ), $B_{sol}$ (Å <sup>2</sup> )	0.44 , 106.4	EDS
L-test for twinning <sup>1</sup>	$\langle  L  \rangle = 0.39$ , $\langle L^2 \rangle = 0.23$	Xtriage
Estimated twinning fraction	No twinning to report.	Xtriage
$F_o, F_c$ correlation	0.98	EDS
Total number of atoms	193	wwPDB-VP
Average B, all atoms (Å <sup>2</sup> )	17.0	wwPDB-VP

Xtriage's analysis on translational NCS is as follows: *The analyses of the Patterson function reveals a significant off-origin peak that is 20.50 % of the origin peak, indicating pseudo translational symmetry. The chance of finding a peak of this or larger height randomly in a structure without pseudo translational symmetry is equal to 8.5762e-03.*

<sup>1</sup>Theoretical values of  $\langle |L| \rangle$ ,  $\langle L^2 \rangle$  for acentric reflections are 0.5, 0.333 respectively for untwinned datasets, and 0.375, 0.2 for perfectly twinned datasets.

## 5 Model quality

### 5.1 Standard geometry

Bond lengths and bond angles in the following residue types are not validated in this section: DM6

The Z score for a bond length (or angle) is the number of standard deviations the observed value is removed from the expected value. A bond length (or angle) with  $|Z| > 5$  is considered an outlier worth inspection. RMSZ is the root-mean-square of all Z scores of the bond lengths (or angles).

Mol	Chain	Bond lengths		Bond angles	
		RMSZ	$\# Z  > 5$	RMSZ	$\# Z  > 5$
1	A	1.77	0/134	2.94	16/205 (7.8%)

There are no bond length outliers.

All (16) bond angle outliers are listed below:

Mol	Chain	Res	Type	Atoms	Z	Observed(°)	Ideal(°)
1	A	5	DC	O4'-C1'-N1	21.01	122.71	108.00
1	A	2	DG	O4'-C1'-N9	11.83	116.28	108.00
1	A	6	DA	O4'-C1'-N9	-10.50	100.65	108.00
1	A	6	DA	N1-C6-N6	7.49	123.10	118.60
1	A	6	DA	N1-C2-N3	-6.98	125.81	129.30
1	A	3	DA	C6-N1-C2	6.71	122.63	118.60
1	A	6	DA	C5-C6-N1	-6.04	114.68	117.70
1	A	6	DA	C6-N1-C2	5.92	122.16	118.60
1	A	5	DC	N3-C4-C5	-5.75	119.60	121.90
1	A	3	DA	N1-C2-N3	-5.72	126.44	129.30
1	A	4	DT	P-O3'-C3'	5.44	126.23	119.70
1	A	1	DT	C2-N3-C4	-5.43	123.94	127.20
1	A	3	DA	C5-C6-N1	-5.32	115.04	117.70
1	A	5	DC	C2-N3-C4	5.21	122.51	119.90
1	A	2	DG	P-O5'-C5'	-5.17	112.62	120.90
1	A	2	DG	C5-C6-N1	5.14	114.07	111.50

There are no chirality outliers.

There are no planarity outliers.

## 5.2 Too-close contacts [i](#)

In the following table, the Non-H and H(model) columns list the number of non-hydrogen atoms and hydrogen atoms in the chain respectively. The H(added) column lists the number of hydrogen atoms added and optimized by MolProbity. The Clashes column lists the number of clashes within the asymmetric unit, whereas Symm-Clashes lists symmetry related clashes.

Mol	Chain	Non-H	H(model)	H(added)	Clashes	Symm-Clashes
1	A	120	0	70	0	0
2	A	39	0	26	0	0
3	A	34	0	0	0	0
All	All	193	0	96	0	0

The all-atom clashscore is defined as the number of clashes found per 1000 atoms (including hydrogen atoms). The all-atom clashscore for this structure is 0.

There are no clashes within the asymmetric unit.

There are no symmetry-related clashes.

## 5.3 Torsion angles [i](#)

### 5.3.1 Protein backbone [i](#)

There are no protein molecules in this entry.

### 5.3.2 Protein sidechains [i](#)

There are no protein molecules in this entry.

### 5.3.3 RNA [i](#)

There are no RNA molecules in this entry.

## 5.4 Non-standard residues in protein, DNA, RNA chains [i](#)

There are no non-standard protein/DNA/RNA residues in this entry.

## 5.5 Carbohydrates [i](#)

There are no carbohydrates in this entry.

## 5.6 Ligand geometry

1 ligand is modelled in this entry.

In the following table, the Counts columns list the number of bonds (or angles) for which Mogul statistics could be retrieved, the number of bonds (or angles) that are observed in the model and the number of bonds (or angles) that are defined in the chemical component dictionary. The Link column lists molecule types, if any, to which the group is linked. The Z score for a bond length (or angle) is the number of standard deviations the observed value is removed from the expected value. A bond length (or angle) with  $|Z| > 2$  is considered an outlier worth inspection. RMSZ is the root-mean-square of all Z scores of the bond lengths (or angles).

Mol	Type	Chain	Res	Link	Bond lengths			Bond angles		
					Counts	RMSZ	# Z  > 2	Counts	RMSZ	# Z  > 2
2	DM6	A	7	-	41,43,43	2.60	19 (46%)	55,67,67	2.68	26 (47%)

In the following table, the Chirals column lists the number of chiral outliers, the number of chiral centers analysed, the number of these observed in the model and the number defined in the chemical component dictionary. Similar counts are reported in the Torsion and Rings columns. '-' means no outliers of that kind were identified.

Mol	Type	Chain	Res	Link	Chirals	Torsions	Rings
2	DM6	A	7	-	-	0/13/60/60	0/5/5/5

All (19) bond length outliers are listed below:

Mol	Chain	Res	Type	Atoms	Z	Observed(Å)	Ideal(Å)
2	A	7	DM6	C3-C4	-5.65	1.27	1.39
2	A	7	DM6	C10-C19	-5.19	1.44	1.51
2	A	7	DM6	C2-C1	-5.00	1.29	1.38
2	A	7	DM6	O9-C9	-4.00	1.35	1.43
2	A	7	DM6	C8-C9	-3.92	1.45	1.53
2	A	7	DM6	C18-C12	-3.33	1.39	1.47
2	A	7	DM6	O4'-C4'	-3.02	1.36	1.43
2	A	7	DM6	C4'-C5'	-2.70	1.47	1.53
2	A	7	DM6	C18-C11	-2.53	1.36	1.41
2	A	7	DM6	C15-C16	-2.34	1.37	1.41
2	A	7	DM6	O7-C7	-2.33	1.40	1.44
2	A	7	DM6	C20-C19	-2.19	1.35	1.39
2	A	7	DM6	C2'-C3'	-2.08	1.48	1.53
2	A	7	DM6	C16-C5	2.04	1.52	1.47
2	A	7	DM6	O4-C21	2.65	1.50	1.42
2	A	7	DM6	C6-C20	3.52	1.46	1.40
2	A	7	DM6	O13-C13	3.56	1.27	1.21
2	A	7	DM6	O7-C1'	3.65	1.51	1.41

*Continued on next page...*

*Continued from previous page...*

Mol	Chain	Res	Type	Atoms	Z	Observed(Å)	Ideal(Å)
2	A	7	DM6	O5-C5	5.40	1.32	1.22

All (26) bond angle outliers are listed below:

Mol	Chain	Res	Type	Atoms	Z	Observed(°)	Ideal(°)
2	A	7	DM6	O13-C13-C14	-6.38	107.71	119.73
2	A	7	DM6	C6'-C5'-C4'	-4.41	105.21	113.07
2	A	7	DM6	O4-C4-C3	-3.82	117.95	124.37
2	A	7	DM6	C1-C15-C16	-3.47	115.07	120.17
2	A	7	DM6	O11-C11-C18	-3.47	113.08	120.93
2	A	7	DM6	C6-C17-C5	-2.90	115.42	120.49
2	A	7	DM6	C3-C2-C1	-2.67	116.48	120.24
2	A	7	DM6	C17-C6-C20	-2.61	116.32	121.38
2	A	7	DM6	C11-C19-C20	-2.39	115.22	119.10
2	A	7	DM6	O7-C1'-O5'	-2.30	102.52	110.05
2	A	7	DM6	O12-C12-C15	-2.08	117.72	120.89
2	A	7	DM6	C4'-C3'-N3'	2.11	115.05	110.92
2	A	7	DM6	C10-C19-C11	2.55	123.80	119.06
2	A	7	DM6	C18-C11-C19	2.56	126.26	121.59
2	A	7	DM6	O4'-C4'-C5'	2.63	115.60	109.74
2	A	7	DM6	O14-C14-C13	2.65	119.61	112.67
2	A	7	DM6	O4-C4-C16	2.74	119.87	115.84
2	A	7	DM6	C2-C1-C15	2.92	125.38	119.83
2	A	7	DM6	O9-C9-C8	3.21	116.61	109.37
2	A	7	DM6	O13-C13-C9	3.59	128.10	122.13
2	A	7	DM6	C21-O4-C4	4.09	123.42	117.54
2	A	7	DM6	C14-C13-C9	4.57	123.06	117.73
2	A	7	DM6	C2'-C3'-C4'	4.73	117.19	110.14
2	A	7	DM6	O5'-C1'-C2'	5.21	118.87	110.83
2	A	7	DM6	O5'-C5'-C4'	5.44	118.58	109.62
2	A	7	DM6	O5'-C5'-C6'	6.29	120.01	106.69

There are no chirality outliers.

There are no torsion outliers.

There are no ring outliers.

No monomer is involved in short contacts.

## 5.7 Other polymers ⓘ

There are no such residues in this entry.

## 5.8 Polymer linkage issues ⓘ

There are no chain breaks in this entry.

## 6 Fit of model and data [i](#)

### 6.1 Protein, DNA and RNA chains [i](#)

In the following table, the column labelled ‘#RSRZ> 2’ contains the number (and percentage) of RSRZ outliers, followed by percent RSRZ outliers for the chain as percentile scores relative to all X-ray entries and entries of similar resolution. The OWAB column contains the minimum, median, 95<sup>th</sup> percentile and maximum values of the occupancy-weighted average B-factor per residue. The column labelled ‘Q< 0.9’ lists the number of (and percentage) of residues with an average occupancy less than 0.9.

Mol	Chain	Analysed	<RSRZ>	#RSRZ>2	OWAB(Å <sup>2</sup> )	Q<0.9
1	A	6/6 (100%)	-0.68	0 <b>100</b> <b>100</b>	11, 13, 14, 14	0

There are no RSRZ outliers to report.

### 6.2 Non-standard residues in protein, DNA, RNA chains [i](#)

There are no non-standard protein/DNA/RNA residues in this entry.

### 6.3 Carbohydrates [i](#)

There are no carbohydrates in this entry.

### 6.4 Ligands [i](#)

In the following table, the Atoms column lists the number of modelled atoms in the group and the number defined in the chemical component dictionary. LLDF column lists the quality of electron density of the group with respect to its neighbouring residues in protein, DNA or RNA chains. The B-factors column lists the minimum, median, 95<sup>th</sup> percentile and maximum values of B factors of atoms in the group. The column labelled ‘Q< 0.9’ lists the number of atoms with occupancy less than 0.9.

Mol	Type	Chain	Res	Atoms	RSCC	RSR	LLDF	B-factors(Å <sup>2</sup> )	Q<0.9
2	DM6	A	7	39/39	0.95	0.09	<b>3.50</b>	6,9,17,19	0

### 6.5 Other polymers [i](#)

There are no such residues in this entry.