



Full wwPDB X-ray Structure Validation Report ⓘ

Feb 13, 2017 – 02:52 pm GMT

PDB ID : 3D7T
Title : Structural basis for the recognition of c-Src by its inactivator Csk
Authors : Levinson, N.M.; Seeliger, M.A.; Cole, P.A.; Kuriyan, J.
Deposited on : 2008-05-21
Resolution : 2.90 Å(reported)

This is a Full wwPDB X-ray Structure Validation Report for a publicly released PDB entry.

We welcome your comments at validation@mail.wwpdb.org

A user guide is available at

<http://wwpdb.org/validation/2016/XrayValidationReportHelp>

with specific help available everywhere you see the ⓘ symbol.

The following versions of software and data (see [references ⓘ](#)) were used in the production of this report:

MolProbity : 4.02b-467
Mogul : 1.7.2 (RC1), CSD as538be (2017)
Xtriage (Phenix) : 1.9-1692
EDS : trunk28620
Percentile statistics : 20161228.v01 (using entries in the PDB archive December 28th 2016)
Refmac : 5.8.0135
CCP4 : 6.5.0
Ideal geometry (proteins) : Engh & Huber (2001)
Ideal geometry (DNA, RNA) : Parkinson et al. (1996)
Validation Pipeline (wwPDB-VP) : recalc28949

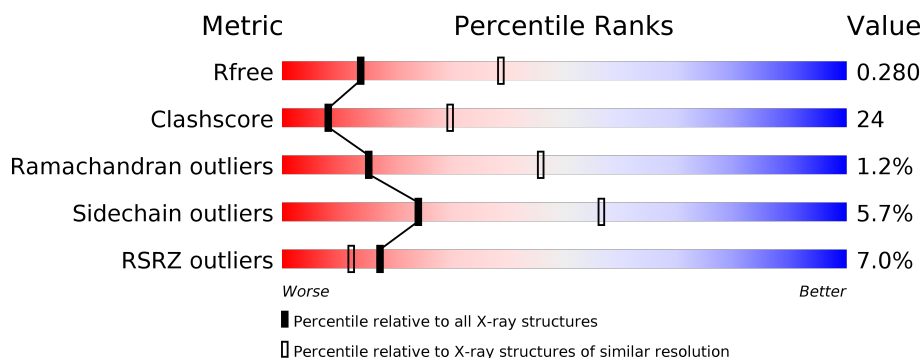
1 Overall quality at a glance

The following experimental techniques were used to determine the structure:

X-RAY DIFFRACTION

The reported resolution of this entry is 2.90 Å.

Percentile scores (ranging between 0-100) for global validation metrics of the entry are shown in the following graphic. The table shows the number of entries on which the scores are based.



Metric	Whole archive (#Entries)	Similar resolution (#Entries, resolution range(Å))
R_{free}	100719	1586 (2.90-2.90)
Clashscore	112137	1807 (2.90-2.90)
Ramachandran outliers	110173	1768 (2.90-2.90)
Sidechain outliers	110143	1770 (2.90-2.90)
RSRZ outliers	101464	1596 (2.90-2.90)

The table below summarises the geometric issues observed across the polymeric chains and their fit to the electron density. The red, orange, yellow and green segments on the lower bar indicate the fraction of residues that contain outliers for ≥ 3 , 2, 1 and 0 types of geometric quality criteria. A grey segment represents the fraction of residues that are not modelled. The numeric value for each fraction is indicated below the corresponding segment, with a dot representing fractions $\leq 5\%$. The upper red bar (where present) indicates the fraction of residues that have poor fit to the electron density. The numeric value is given above the bar.

Mol	Chain	Length	Quality of chain
1	A	269	<div> <div>12%</div> <div> <div></div> <div>49%</div> <div>41%</div> <div>7%</div> </div> </div>
2	B	286	<div> <div>2%</div> <div> <div></div> <div>58%</div> <div>31%</div> <div>7%</div> </div> </div>

2 Entry composition

There are 3 unique types of molecules in this entry. The entry contains 4174 atoms, of which 0 are hydrogens and 0 are deuteriums.

In the tables below, the ZeroOcc column contains the number of atoms modelled with zero occupancy, the AltConf column contains the number of residues with at least one atom in alternate conformation and the Trace column contains the number of residues modelled with at most 2 atoms.

- Molecule 1 is a protein called Tyrosine-protein kinase CSK.

Mol	Chain	Residues	Atoms					ZeroOcc	AltConf	Trace
1	A	249	Total	C	N	O	S	0	0	0
			1969	1261	337	358	13			

There are 8 discrepancies between the modelled and reference sequences:

Chain	Residue	Modelled	Actual	Comment	Reference
A	182	GLY	-	EXPRESSION TAG	UNP P41240
A	183	PRO	-	EXPRESSION TAG	UNP P41240
A	184	LEU	-	EXPRESSION TAG	UNP P41240
A	185	GLY	-	EXPRESSION TAG	UNP P41240
A	186	SER	-	EXPRESSION TAG	UNP P41240
A	187	GLY	-	EXPRESSION TAG	UNP P41240
A	361	ALA	LYS	ENGINEERED	UNP P41240
A	362	ALA	LYS	ENGINEERED	UNP P41240

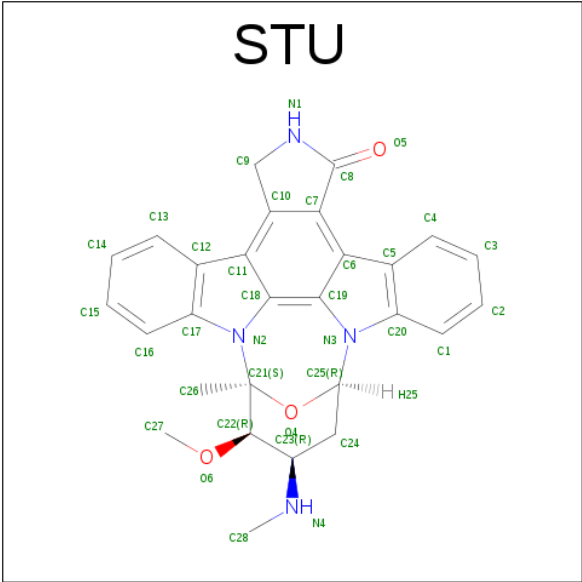
- Molecule 2 is a protein called Proto-oncogene tyrosine-protein kinase Src.

Mol	Chain	Residues	Atoms					ZeroOcc	AltConf	Trace
2	B	265	Total	C	N	O	S	0	0	0
			2135	1372	357	389	17			

There are 3 discrepancies between the modelled and reference sequences:

Chain	Residue	Modelled	Actual	Comment	Reference
B	248	GLY	-	EXPRESSION TAG	UNP P00523
B	249	HIS	-	EXPRESSION TAG	UNP P00523
B	250	MET	-	EXPRESSION TAG	UNP P00523

- Molecule 3 is STAUROSPORINE (three-letter code: STU) (formula: $C_{28}H_{26}N_4O_3$).

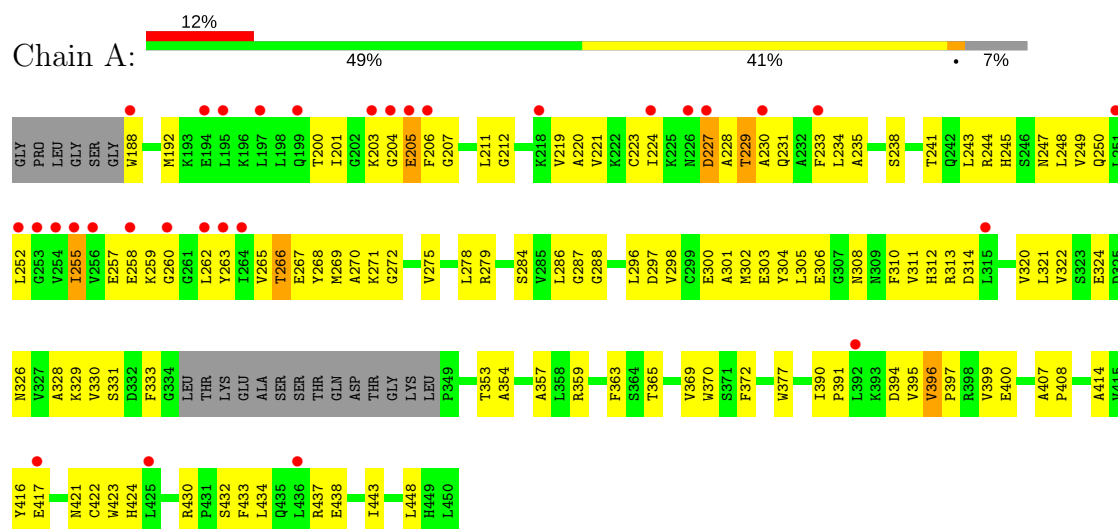


Mol	Chain	Residues	Atoms				ZeroOcc	AltConf
3	B	1	Total	C	N	O	0	0
			35	28	4	3		
3	A	1	Total	C	N	O	0	0
			35	28	4	3		

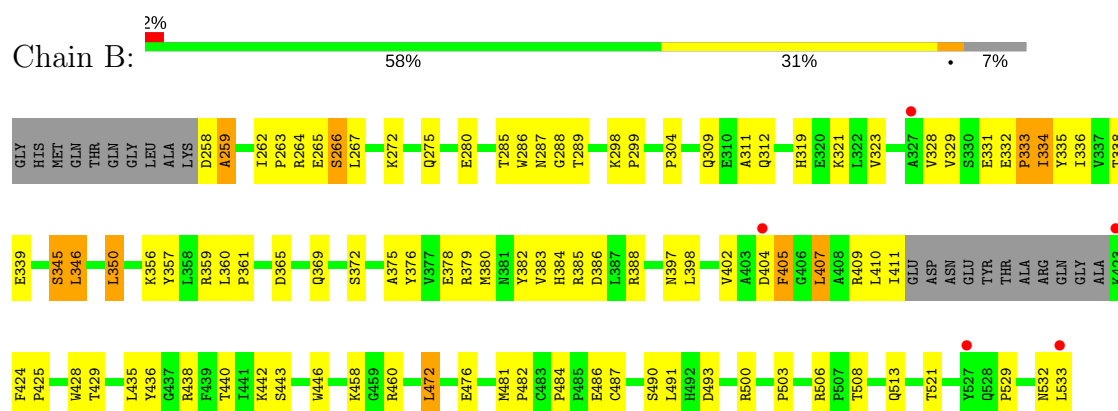
3 Residue-property plots

These plots are drawn for all protein, RNA and DNA chains in the entry. The first graphic for a chain summarises the proportions of the various outlier classes displayed in the second graphic. The second graphic shows the sequence view annotated by issues in geometry and electron density. Residues are color-coded according to the number of geometric quality criteria for which they contain at least one outlier: green = 0, yellow = 1, orange = 2 and red = 3 or more. A red dot above a residue indicates a poor fit to the electron density ($RSRZ > 2$). Stretches of 2 or more consecutive residues without any outlier are shown as a green connector. Residues present in the sample, but not in the model, are shown in grey.

• Molecule 1: Tyrosine-protein kinase CSK



• Molecule 2: Proto-oncogene tyrosine-protein kinase Src



4 Data and refinement statistics

Property	Value	Source
Space group	P 31 2 1	Depositor
Cell constants a, b, c, α , β , γ	99.65Å 99.65Å 137.06Å 90.00° 90.00° 120.00°	Depositor
Resolution (Å)	45.69 – 2.90 45.69 – 2.90	Depositor EDS
% Data completeness (in resolution range)	93.5 (45.69-2.90) 99.3 (45.69-2.90)	Depositor EDS
R_{merge}	(Not available)	Depositor
R_{sym}	(Not available)	Depositor
$\langle I/\sigma(I) \rangle$ ¹	2.86 (at 2.91Å)	Xtriage
Refinement program	PHENIX (phenix.refine)	Depositor
R, R_{free}	0.237 , 0.278 0.238 , 0.280	Depositor DCC
R_{free} test set	912 reflections (5.11%)	DCC
Wilson B-factor (Å ²)	85.4	Xtriage
Anisotropy	0.495	Xtriage
Bulk solvent k_{sol} (e/Å ³), B_{sol} (Å ²)	0.32 , 72.8	EDS
L-test for twinning ²	$\langle L \rangle = 0.50$, $\langle L^2 \rangle = 0.34$	Xtriage
Estimated twinning fraction	0.019 for -h,-k,l	Xtriage
F_o, F_c correlation	0.93	EDS
Total number of atoms	4174	wwPDB-VP
Average B, all atoms (Å ²)	107.0	wwPDB-VP

Xtriage's analysis on translational NCS is as follows: *The largest off-origin peak in the Patterson function is 3.51% of the height of the origin peak. No significant pseudotranslation is detected.*

¹Intensities estimated from amplitudes.

²Theoretical values of $\langle |L| \rangle$, $\langle L^2 \rangle$ for acentric reflections are 0.5, 0.333 respectively for untwinned datasets, and 0.375, 0.2 for perfectly twinned datasets.

5 Model quality

5.1 Standard geometry

Bond lengths and bond angles in the following residue types are not validated in this section: STU

The Z score for a bond length (or angle) is the number of standard deviations the observed value is removed from the expected value. A bond length (or angle) with $|Z| > 5$ is considered an outlier worth inspection. RMSZ is the root-mean-square of all Z scores of the bond lengths (or angles).

Mol	Chain	Bond lengths		Bond angles	
		RMSZ	$\# Z > 5$	RMSZ	$\# Z > 5$
1	A	0.33	0/2011	0.51	0/2716
2	B	0.41	0/2187	0.62	0/2960
All	All	0.38	0/4198	0.57	0/5676

There are no bond length outliers.

There are no bond angle outliers.

There are no chirality outliers.

There are no planarity outliers.

5.2 Too-close contacts

In the following table, the Non-H and H(model) columns list the number of non-hydrogen atoms and hydrogen atoms in the chain respectively. The H(added) column lists the number of hydrogen atoms added and optimized by MolProbity. The Clashes column lists the number of clashes within the asymmetric unit, whereas Symm-Clashes lists symmetry related clashes.

Mol	Chain	Non-H	H(model)	H(added)	Clashes	Symm-Clashes
1	A	1969	0	1978	112	1
2	B	2135	0	2129	69	0
3	A	35	0	26	10	0
3	B	35	0	26	10	0
All	All	4174	0	4159	196	1

The all-atom clashscore is defined as the number of clashes found per 1000 atoms (including hydrogen atoms). The all-atom clashscore for this structure is 24.

All (196) close contacts within the same asymmetric unit are listed below, sorted by their clash magnitude.

Atom-1	Atom-2	Interatomic distance (Å)	Clash overlap (Å)
1:A:244:ARG:HD2	1:A:250:GLN:HE22	1.17	1.03
1:A:252:LEU:HB2	1:A:265:VAL:HG12	1.47	0.94
1:A:247:ASN:HB3	1:A:301:ALA:HB2	1.50	0.90
3:B:6334:STU:H16	3:B:6334:STU:H261	1.56	0.87
2:B:331:GLU:O	2:B:334:ILE:HG12	1.75	0.86
3:A:6335:STU:H261	3:A:6335:STU:H16	1.56	0.85
1:A:206:PHE:CE2	1:A:233:PHE:HE2	1.94	0.85
1:A:200:THR:HG21	1:A:203:LYS:HE2	1.61	0.82
2:B:264:ARG:NH2	2:B:333:PRO:HD2	1.95	0.80
2:B:407:LEU:HD23	2:B:407:LEU:H	1.48	0.78
3:A:6335:STU:N4	3:A:6335:STU:H273	2.01	0.74
1:A:270:ALA:CB	1:A:324:GLU:HG3	2.17	0.74
1:A:311:VAL:HG11	1:A:363:PHE:O	1.88	0.74
3:B:6334:STU:H241	3:B:6334:STU:H272	1.70	0.73
1:A:221:VAL:HG22	1:A:265:VAL:HG22	1.70	0.73
1:A:188:TRP:CZ2	1:A:241:THR:HB	2.25	0.72
3:A:6335:STU:HN4	3:A:6335:STU:H273	1.57	0.70
1:A:257:GLU:HG2	1:A:258:GLU:H	1.56	0.70
1:A:257:GLU:HG2	1:A:258:GLU:N	2.07	0.69
1:A:258:GLU:O	1:A:260:GLY:N	2.26	0.69
1:A:247:ASN:CB	1:A:301:ALA:HB2	2.24	0.68
2:B:409:ARG:HE	2:B:411:ILE:HG13	1.58	0.68
1:A:219:VAL:CG1	1:A:265:VAL:HG13	2.24	0.68
1:A:245:HIS:HD2	1:A:247:ASN:HB2	1.60	0.67
1:A:396:VAL:HG13	1:A:397:PRO:CD	2.25	0.67
2:B:405:PHE:CD1	2:B:405:PHE:N	2.61	0.66
2:B:272:LYS:HE3	2:B:280:GLU:OE1	1.96	0.66
1:A:269:MET:SD	1:A:329:LYS:HB2	2.35	0.66
2:B:484:PRO:HG2	2:B:487:CYS:HB3	1.78	0.65
2:B:338:THR:HG22	2:B:339:GLU:N	2.10	0.65
2:B:287:ASN:O	2:B:289:THR:HG23	1.97	0.65
2:B:484:PRO:HG2	2:B:487:CYS:CB	2.27	0.64
1:A:228:ALA:C	1:A:230:ALA:H	2.01	0.64
1:A:223:CYS:HB3	1:A:263:TYR:HE1	1.63	0.63
1:A:245:HIS:HB3	1:A:248:LEU:HG	1.80	0.63
2:B:376:TYR:HD1	2:B:379:ARG:NH2	1.95	0.63
1:A:220:ALA:HB3	1:A:266:THR:HG22	1.82	0.62
2:B:263:PRO:HB2	2:B:265:GLU:OE1	2.00	0.62
3:A:6335:STU:C16	3:A:6335:STU:H261	2.26	0.60
2:B:264:ARG:CZ	2:B:333:PRO:HD2	2.31	0.60
1:A:245:HIS:CD2	1:A:247:ASN:HB2	2.37	0.59
2:B:365:ASP:O	2:B:369:GLN:HG3	2.02	0.59

Continued on next page...

Continued from previous page...

Atom-1	Atom-2	Interatomic distance (Å)	Clash overlap (Å)
2:B:359:ARG:HD2	2:B:533:LEU:OXT	2.01	0.59
1:A:396:VAL:O	1:A:400:GLU:HG3	2.02	0.59
1:A:247:ASN:ND2	1:A:300:GLU:HB2	2.18	0.59
2:B:323:VAL:HG23	2:B:402:VAL:O	2.03	0.59
2:B:272:LYS:HZ1	2:B:275:GLN:HG3	1.68	0.58
2:B:409:ARG:HE	2:B:411:ILE:CG1	2.16	0.58
1:A:303:GLU:HB2	1:A:433:PHE:O	2.05	0.57
2:B:360:LEU:HB3	2:B:361:PRO:HD3	1.85	0.57
1:A:204:GLY:C	1:A:206:PHE:H	2.06	0.57
1:A:243:LEU:HD21	1:A:308:ASN:HB3	1.87	0.57
1:A:278:LEU:HD23	1:A:286:LEU:HD12	1.88	0.56
1:A:369:VAL:O	1:A:422:CYS:HB3	2.04	0.56
2:B:376:TYR:O	2:B:380:MET:HG2	2.06	0.56
1:A:248:LEU:HD23	1:A:301:ALA:HB1	1.88	0.56
1:A:313:ARG:HG2	1:A:363:PHE:HB2	1.88	0.56
2:B:258:ASP:O	2:B:259:ALA:HB3	2.06	0.56
1:A:219:VAL:HG11	1:A:265:VAL:HG13	1.87	0.55
1:A:443:ILE:HA	1:A:448:LEU:HD12	1.88	0.55
2:B:266:SER:HB3	2:B:286:TRP:CD1	2.40	0.55
1:A:417:GLU:O	1:A:421:ASN:HB2	2.07	0.55
1:A:224:ILE:HG22	1:A:230:ALA:HB2	1.88	0.55
2:B:388:ARG:HB3	2:B:428:TRP:CD1	2.42	0.55
2:B:304:PRO:HB3	2:B:334:ILE:CD1	2.37	0.55
1:A:219:VAL:HG13	1:A:265:VAL:HG13	1.88	0.54
2:B:409:ARG:NE	2:B:411:ILE:HG13	2.20	0.54
1:A:223:CYS:HA	1:A:263:TYR:CD1	2.43	0.54
2:B:264:ARG:HH21	2:B:331:GLU:HB2	1.71	0.54
2:B:329:VAL:HB	2:B:335:TYR:HB2	1.90	0.54
1:A:244:ARG:CD	1:A:250:GLN:HE22	2.06	0.54
1:A:313:ARG:HG2	1:A:363:PHE:CB	2.38	0.53
1:A:230:ALA:HB3	1:A:262:LEU:HD23	1.90	0.53
1:A:321:LEU:HD21	3:A:6335:STU:H272	1.91	0.53
1:A:249:VAL:HG23	1:A:330:VAL:O	2.08	0.53
2:B:490:SER:O	2:B:493:ASP:HB3	2.08	0.53
3:B:6334:STU:H261	3:B:6334:STU:C16	2.29	0.53
1:A:268:TYR:CE2	1:A:270:ALA:HA	2.42	0.53
1:A:396:VAL:HG13	1:A:397:PRO:HD3	1.89	0.53
1:A:234:LEU:HD11	1:A:262:LEU:HD21	1.89	0.53
2:B:332:GLU:HB2	2:B:333:PRO:HD3	1.91	0.53
1:A:424:HIS:HB2	1:A:430:ARG:HG2	1.89	0.53
2:B:338:THR:CG2	2:B:339:GLU:N	2.72	0.53

Continued on next page...

Continued from previous page...

Atom-1	Atom-2	Interatomic distance (Å)	Clash overlap (Å)
3:B:6334:STU:H241	3:B:6334:STU:C27	2.37	0.52
2:B:356:LYS:HE3	2:B:357:TYR:CE1	2.44	0.52
1:A:272:GLY:O	1:A:321:LEU:HA	2.09	0.52
2:B:375:ALA:O	2:B:378:GLU:HB3	2.09	0.52
3:B:6334:STU:N4	3:B:6334:STU:H273	2.24	0.52
1:A:306:GLU:OE2	1:A:432:SER:HB2	2.10	0.51
1:A:407:ALA:HB2	1:A:416:TYR:CD2	2.46	0.51
2:B:372:SER:HA	2:B:513:GLN:OE1	2.10	0.50
1:A:244:ARG:HD2	1:A:250:GLN:NE2	2.03	0.50
1:A:245:HIS:HD2	1:A:247:ASN:H	1.58	0.50
2:B:262:ILE:HD11	2:B:267:LEU:HD11	1.94	0.50
1:A:271:LYS:NZ	1:A:326:ASN:OD1	2.45	0.49
1:A:312:HIS:CE1	1:A:314:ASP:HB3	2.47	0.49
2:B:304:PRO:HB3	2:B:334:ILE:HD12	1.94	0.49
1:A:223:CYS:HB3	1:A:263:TYR:CE1	2.46	0.49
1:A:357:ALA:HB1	1:A:363:PHE:CE1	2.47	0.48
2:B:382:TYR:HA	2:B:409:ARG:HA	1.94	0.48
2:B:409:ARG:HG3	2:B:411:ILE:HG12	1.94	0.48
1:A:228:ALA:O	1:A:230:ALA:N	2.47	0.48
1:A:396:VAL:HG13	1:A:397:PRO:HD2	1.94	0.48
2:B:388:ARG:HE	2:B:425:PRO:HG2	1.79	0.48
2:B:384:HIS:O	2:B:385:ARG:HB2	2.13	0.48
2:B:346:LEU:HD22	2:B:350:LEU:HD22	1.96	0.47
1:A:247:ASN:HD22	1:A:300:GLU:HB2	1.78	0.47
1:A:321:LEU:HD21	3:A:6335:STU:C27	2.45	0.47
1:A:312:HIS:NE2	1:A:333:PHE:HA	2.29	0.47
1:A:211:LEU:HD12	1:A:212:GLY:H	1.80	0.47
1:A:245:HIS:CD2	1:A:247:ASN:H	2.33	0.46
1:A:296:LEU:C	1:A:298:VAL:H	2.17	0.46
1:A:353:THR:HG22	1:A:354:ALA:O	2.16	0.46
2:B:331:GLU:HB3	2:B:332:GLU:H	1.60	0.46
3:A:6335:STU:H272	3:A:6335:STU:C18	2.46	0.46
2:B:442:LYS:HD2	2:B:503:PRO:O	2.16	0.46
1:A:201:ILE:HD12	3:A:6335:STU:C4	2.45	0.46
1:A:434:LEU:O	1:A:438:GLU:HG2	2.15	0.46
1:A:390:ILE:HA	1:A:391:PRO:HD3	1.80	0.46
2:B:258:ASP:O	2:B:259:ALA:CB	2.64	0.46
1:A:205:GLU:CD	1:A:205:GLU:H	2.19	0.46
1:A:229:THR:HG22	1:A:229:THR:O	2.16	0.46
1:A:228:ALA:C	1:A:230:ALA:N	2.68	0.46
1:A:320:VAL:HG12	1:A:321:LEU:N	2.30	0.46

Continued on next page...

Continued from previous page...

Atom-1	Atom-2	Interatomic distance (Å)	Clash overlap (Å)
1:A:192:MET:HB2	1:A:255:ILE:HG21	1.97	0.45
1:A:235:ALA:O	1:A:238:SER:HB3	2.16	0.45
1:A:395:VAL:O	1:A:399:VAL:HG23	2.16	0.45
2:B:266:SER:HB3	2:B:286:TRP:HD1	1.81	0.45
2:B:345:SER:HB3	3:B:6334:STU:H273	1.98	0.45
3:A:6335:STU:N4	3:A:6335:STU:C27	2.74	0.45
1:A:248:LEU:CD2	1:A:301:ALA:HB1	2.45	0.45
2:B:309:GLN:HA	2:B:312:GLN:HG2	1.98	0.45
2:B:500:ARG:O	2:B:506:ARG:HD2	2.17	0.45
1:A:370:TRP:CE3	1:A:423:TRP:HA	2.52	0.45
3:B:6334:STU:HN4	3:B:6334:STU:H273	1.82	0.45
2:B:472:LEU:HD22	2:B:476:GLU:OE2	2.17	0.45
1:A:304:TYR:CD2	1:A:305:LEU:HD23	2.52	0.44
2:B:424:PHE:HB2	2:B:429:THR:OG1	2.18	0.44
3:B:6334:STU:C24	3:B:6334:STU:H272	2.43	0.44
1:A:414:ALA:HB1	1:A:443:ILE:HG12	1.98	0.44
1:A:333:PHE:CD1	1:A:333:PHE:N	2.85	0.44
1:A:206:PHE:CE2	1:A:233:PHE:CE2	2.87	0.44
1:A:297:ASP:HB2	1:A:328:ALA:HB3	2.00	0.44
3:B:6334:STU:C24	3:B:6334:STU:C27	2.96	0.44
1:A:227:ASP:HB3	1:A:228:ALA:H	1.45	0.44
1:A:357:ALA:HB1	1:A:363:PHE:CD1	2.53	0.44
2:B:486:GLU:OE1	2:B:532:ASN:HB2	2.18	0.44
1:A:330:VAL:HG12	1:A:331:SER:H	1.83	0.43
2:B:311:ALA:HB2	2:B:336:ILE:HD13	1.99	0.43
2:B:440:THR:O	2:B:443:SER:HB3	2.18	0.43
1:A:223:CYS:HA	1:A:263:TYR:HD1	1.83	0.43
1:A:310:PHE:CD2	1:A:311:VAL:N	2.86	0.43
1:A:204:GLY:C	1:A:206:PHE:N	2.72	0.43
1:A:258:GLU:C	1:A:260:GLY:H	2.21	0.43
1:A:422:CYS:O	1:A:430:ARG:HD3	2.18	0.43
1:A:228:ALA:O	1:A:231:GLN:HG3	2.18	0.43
3:A:6335:STU:C16	3:A:6335:STU:C26	2.95	0.43
2:B:264:ARG:HH21	2:B:331:GLU:CB	2.31	0.43
2:B:384:HIS:HE1	2:B:386:ASP:O	2.02	0.43
3:B:6334:STU:C26	3:B:6334:STU:C16	2.95	0.43
1:A:219:VAL:HG22	1:A:252:LEU:CD1	2.49	0.43
1:A:287:GLY:O	1:A:288:GLY:C	2.57	0.43
2:B:436:TYR:CD2	2:B:438:ARG:NH1	2.87	0.43
1:A:207:GLY:HA2	1:A:224:ILE:CD1	2.49	0.42
1:A:298:VAL:CG1	1:A:372:PHE:HE1	2.32	0.42

Continued on next page...

Continued from previous page...

Atom-1	Atom-2	Interatomic distance (Å)	Clash overlap (Å)
2:B:388:ARG:NE	2:B:425:PRO:HG2	2.34	0.42
1:A:304:TYR:CZ	1:A:308:ASN:ND2	2.87	0.42
1:A:300:GLU:HG2	1:A:437:ARG:HD2	2.00	0.42
2:B:272:LYS:HE3	2:B:280:GLU:CD	2.40	0.42
1:A:278:LEU:HD23	1:A:286:LEU:CD1	2.49	0.42
1:A:377:TRP:CD1	1:A:408:PRO:HG3	2.54	0.42
2:B:359:ARG:HA	2:B:359:ARG:HD3	1.75	0.42
1:A:302:MET:HE2	1:A:433:PHE:CZ	2.54	0.42
1:A:305:LEU:HB3	1:A:310:PHE:HB3	2.02	0.42
1:A:432:SER:C	1:A:434:LEU:H	2.23	0.42
1:A:245:HIS:HB2	1:A:304:TYR:CD2	2.55	0.42
2:B:398:LEU:HA	2:B:398:LEU:HD23	1.82	0.42
1:A:271:LYS:HB2	1:A:322:VAL:HB	2.02	0.41
2:B:446:TRP:CD1	2:B:446:TRP:C	2.94	0.41
2:B:298:LYS:HA	2:B:299:PRO:HD3	1.94	0.41
1:A:313:ARG:HD3	1:A:363:PHE:CD2	2.56	0.41
2:B:435:LEU:O	2:B:436:TYR:CD1	2.73	0.41
1:A:192:MET:HE3	1:A:257:GLU:HB2	2.03	0.41
1:A:230:ALA:CB	1:A:262:LEU:HD23	2.50	0.41
1:A:443:ILE:HG23	1:A:448:LEU:HB2	2.02	0.41
2:B:383:VAL:O	2:B:407:LEU:HA	2.20	0.41
1:A:250:GLN:N	1:A:267:GLU:HG2	2.35	0.41
2:B:458:LYS:HB3	2:B:458:LYS:HE2	1.72	0.41
2:B:521:THR:O	2:B:521:THR:HG22	2.20	0.41
1:A:279:ARG:O	2:B:508:THR:HG23	2.21	0.41
1:A:270:ALA:HB3	1:A:324:GLU:N	2.35	0.40
1:A:296:LEU:C	1:A:298:VAL:N	2.75	0.40
1:A:304:TYR:CE1	1:A:308:ASN:ND2	2.88	0.40
2:B:319:HIS:CD2	2:B:321:LYS:H	2.40	0.40
2:B:435:LEU:HA	2:B:435:LEU:HD23	1.88	0.40
2:B:481:MET:HA	2:B:482:PRO:HD2	1.93	0.40

All (1) symmetry-related close contacts are listed below. The label for Atom-2 includes the symmetry operator and encoded unit-cell translations to be applied.

Atom-1	Atom-2	Interatomic distance (Å)	Clash overlap (Å)
1:A:258:GLU:O	1:A:258:GLU:O[4_465]	1.89	0.31

5.3 Torsion angles [i](#)

5.3.1 Protein backbone [i](#)

In the following table, the Percentiles column shows the percent Ramachandran outliers of the chain as a percentile score with respect to all X-ray entries followed by that with respect to entries of similar resolution.

The Analysed column shows the number of residues for which the backbone conformation was analysed, and the total number of residues.

Mol	Chain	Analysed	Favoured	Allowed	Outliers	Percentiles	
1	A	245/269 (91%)	204 (83%)	39 (16%)	2 (1%)	22	57
2	B	261/286 (91%)	234 (90%)	23 (9%)	4 (2%)	12	39
All	All	506/555 (91%)	438 (87%)	62 (12%)	6 (1%)	15	46

All (6) Ramachandran outliers are listed below:

Mol	Chain	Res	Type
1	A	259	LYS
1	A	229	THR
2	B	259	ALA
2	B	529	PRO
2	B	333	PRO
2	B	288	GLY

5.3.2 Protein sidechains [i](#)

In the following table, the Percentiles column shows the percent sidechain outliers of the chain as a percentile score with respect to all X-ray entries followed by that with respect to entries of similar resolution.

The Analysed column shows the number of residues for which the sidechain conformation was analysed, and the total number of residues.

Mol	Chain	Analysed	Rotameric	Outliers	Percentiles	
1	A	211/226 (93%)	201 (95%)	10 (5%)	30	65
2	B	230/245 (94%)	215 (94%)	15 (6%)	20	49
All	All	441/471 (94%)	416 (94%)	25 (6%)	24	56

All (25) residues with a non-rotameric sidechain are listed below:

Mol	Chain	Res	Type
1	A	205	GLU
1	A	227	ASP
1	A	255	ILE
1	A	266	THR
1	A	275	VAL
1	A	284	SER
1	A	359	ARG
1	A	365	THR
1	A	394	ASP
1	A	396	VAL
2	B	266	SER
2	B	285	THR
2	B	328	VAL
2	B	334	ILE
2	B	345	SER
2	B	346	LEU
2	B	350	LEU
2	B	397	ASN
2	B	404	ASP
2	B	405	PHE
2	B	407	LEU
2	B	410	LEU
2	B	460	ARG
2	B	472	LEU
2	B	491	LEU

Some sidechains can be flipped to improve hydrogen bonding and reduce clashes. All (8) such sidechains are listed below:

Mol	Chain	Res	Type
1	A	217	ASN
1	A	245	HIS
1	A	247	ASN
1	A	250	GLN
2	B	275	GLN
2	B	287	ASN
2	B	319	HIS
2	B	324	GLN

5.3.3 RNA ⓘ

There are no RNA molecules in this entry.

5.4 Non-standard residues in protein, DNA, RNA chains [i](#)

There are no non-standard protein/DNA/RNA residues in this entry.

5.5 Carbohydrates [i](#)

There are no carbohydrates in this entry.

5.6 Ligand geometry [i](#)

2 ligands are modelled in this entry.

In the following table, the Counts columns list the number of bonds (or angles) for which Mogul statistics could be retrieved, the number of bonds (or angles) that are observed in the model and the number of bonds (or angles) that are defined in the chemical component dictionary. The Link column lists molecule types, if any, to which the group is linked. The Z score for a bond length (or angle) is the number of standard deviations the observed value is removed from the expected value. A bond length (or angle) with $|Z| > 2$ is considered an outlier worth inspection. RMSZ is the root-mean-square of all Z scores of the bond lengths (or angles).

Mol	Type	Chain	Res	Link	Bond lengths			Bond angles		
					Counts	RMSZ	# $ Z > 2$	Counts	RMSZ	# $ Z > 2$
3	STU	A	6335	-	29,42,42	1.08	1 (3%)	27,68,68	1.75	6 (22%)
3	STU	B	6334	-	29,42,42	1.07	2 (6%)	27,68,68	1.72	5 (18%)

In the following table, the Chirals column lists the number of chiral outliers, the number of chiral centers analysed, the number of these observed in the model and the number defined in the chemical component dictionary. Similar counts are reported in the Torsion and Rings columns. '-' means no outliers of that kind were identified.

Mol	Type	Chain	Res	Link	Chirals	Torsions	Rings
3	STU	A	6335	-	-	0/4/42/42	0/0/8/8
3	STU	B	6334	-	-	0/4/42/42	0/0/8/8

All (3) bond length outliers are listed below:

Mol	Chain	Res	Type	Atoms	Z	Observed(Å)	Ideal(Å)
3	B	6334	STU	O6-C22	2.15	1.46	1.42
3	B	6334	STU	C22-C23	2.22	1.55	1.52
3	A	6335	STU	C22-C23	3.44	1.56	1.52

All (11) bond angle outliers are listed below:

Mol	Chain	Res	Type	Atoms	Z	Observed(°)	Ideal(°)
3	B	6334	STU	C9-N1-C8	-4.58	108.85	113.78
3	A	6335	STU	C9-N1-C8	-4.53	108.90	113.78
3	B	6334	STU	C9-C10-C7	-3.50	106.48	109.61
3	A	6335	STU	C9-C10-C7	-3.20	106.75	109.61
3	B	6334	STU	C3-C4-C5	-2.61	116.40	120.81
3	A	6335	STU	C3-C4-C5	-2.24	117.02	120.81
3	A	6335	STU	C14-C13-C12	-2.20	117.10	120.81
3	A	6335	STU	C24-C23-C22	2.13	113.47	109.50
3	B	6334	STU	C4-C5-C20	2.43	122.46	119.39
3	B	6334	STU	C10-C9-N1	3.60	106.01	101.86
3	A	6335	STU	C10-C9-N1	3.70	106.12	101.86

There are no chirality outliers.

There are no torsion outliers.

There are no ring outliers.

2 monomers are involved in 20 short contacts:

Mol	Chain	Res	Type	Clashes	Symm-Clashes
3	A	6335	STU	10	0
3	B	6334	STU	10	0

5.7 Other polymers [i](#)

There are no such residues in this entry.

5.8 Polymer linkage issues [i](#)

There are no chain breaks in this entry.

6 Fit of model and data

6.1 Protein, DNA and RNA chains

In the following table, the column labelled ‘#RSRZ> 2’ contains the number (and percentage) of RSRZ outliers, followed by percent RSRZ outliers for the chain as percentile scores relative to all X-ray entries and entries of similar resolution. The OWAB column contains the minimum, median, 95th percentile and maximum values of the occupancy-weighted average B-factor per residue. The column labelled ‘Q< 0.9’ lists the number of (and percentage) of residues with an average occupancy less than 0.9.

Mol	Chain	Analysed	<RSRZ>	#RSRZ>2	OWAB(Å ²)	Q<0.9
1	A	249/269 (92%)	0.73	31 (12%) 4 3	75, 128, 181, 196	0
2	B	265/286 (92%)	0.11	5 (1%) 67 64	63, 84, 114, 136	0
All	All	514/555 (92%)	0.41	36 (7%) 17 12	63, 100, 173, 196	0

All (36) RSRZ outliers are listed below:

Mol	Chain	Res	Type	RSRZ
1	A	256	VAL	8.4
1	A	264	ILE	7.0
1	A	197	LEU	5.5
1	A	227	ASP	5.3
1	A	230	ALA	5.1
1	A	255	ILE	4.5
1	A	254	VAL	3.8
1	A	262	LEU	3.7
1	A	263	TYR	3.7
1	A	233	PHE	3.6
1	A	417	GLU	3.5
1	A	251	LEU	3.4
1	A	224	ILE	3.3
1	A	203	LYS	3.3
1	A	194	GLU	3.3
1	A	315	LEU	3.1
1	A	436	LEU	2.8
2	B	533	LEU	2.7
1	A	188	TRP	2.5
1	A	218	LYS	2.5
1	A	205	GLU	2.4
1	A	252	LEU	2.4
1	A	226	ASN	2.4
1	A	199	GLN	2.3

Continued on next page...

Continued from previous page...

Mol	Chain	Res	Type	RSRZ
1	A	260	GLY	2.3
1	A	425	LEU	2.2
1	A	206	PHE	2.2
2	B	423	LYS	2.2
2	B	404	ASP	2.1
1	A	258	GLU	2.1
2	B	527	TYR	2.1
1	A	204	GLY	2.1
1	A	195	LEU	2.1
1	A	392	LEU	2.0
1	A	253	GLY	2.0
2	B	327	ALA	2.0

6.2 Non-standard residues in protein, DNA, RNA chains [i](#)

There are no non-standard protein/DNA/RNA residues in this entry.

6.3 Carbohydrates [i](#)

There are no carbohydrates in this entry.

6.4 Ligands [i](#)

In the following table, the Atoms column lists the number of modelled atoms in the group and the number defined in the chemical component dictionary. LLDF column lists the quality of electron density of the group with respect to its neighbouring residues in protein, DNA or RNA chains. The B-factors column lists the minimum, median, 95th percentile and maximum values of B factors of atoms in the group. The column labelled 'Q < 0.9' lists the number of atoms with occupancy less than 0.9.

Mol	Type	Chain	Res	Atoms	RSCC	RSR	LLDF	B-factors(\AA^2)	Q<0.9
3	STU	B	6334	35/35	0.96	0.22	-0.06	58,65,71,84	0
3	STU	A	6335	35/35	0.94	0.23	-0.20	104,125,129,129	0

6.5 Other polymers [i](#)

There are no such residues in this entry.