



# wwPDB X-ray Structure Validation Summary Report ⓘ

Feb 14, 2017 – 04:11 pm GMT

PDB ID : 2DBX  
Title : Crystal Structure of Gamma-glutamyltranspeptidase from Escherichia coli  
Complexed with L-Glutamate  
Authors : Okada, T.; Wada, K.; Fukuyama, K.  
Deposited on : 2005-12-16  
Resolution : 1.70 Å(reported)

This is a wwPDB X-ray Structure Validation Summary Report for a publicly released PDB entry.

We welcome your comments at [validation@mail.wwpdb.org](mailto:validation@mail.wwpdb.org)

A user guide is available at

<http://wwpdb.org/validation/2016/XrayValidationReportHelp>

with specific help available everywhere you see the ⓘ symbol.

---

The following versions of software and data (see [references ⓘ](#)) were used in the production of this report:

MolProbity : 4.02b-467  
Mogul : 1.7.2 (RC1), CSD as538be (2017)  
Xtriage (Phenix) : 1.9-1692  
EDS : trunk28620  
Percentile statistics : 20161228.v01 (using entries in the PDB archive December 28th 2016)  
Refmac : 5.8.0135  
CCP4 : 6.5.0  
Ideal geometry (proteins) : Engh & Huber (2001)  
Ideal geometry (DNA, RNA) : Parkinson et al. (1996)  
Validation Pipeline (wwPDB-VP) : recalc28949

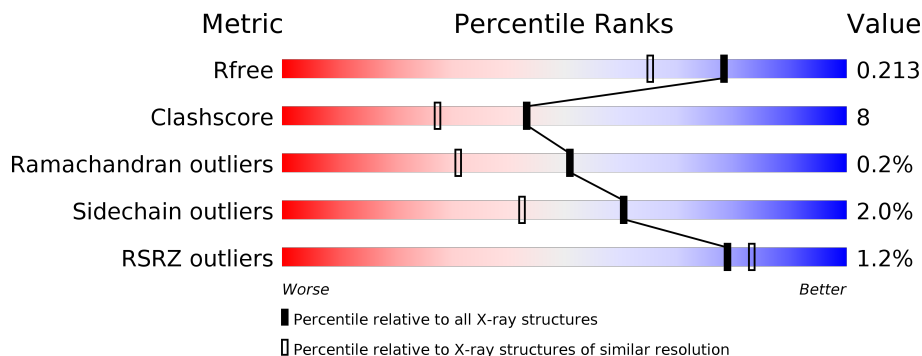
# 1 Overall quality at a glance

The following experimental techniques were used to determine the structure:

*X-RAY DIFFRACTION*

The reported resolution of this entry is 1.70 Å.

Percentile scores (ranging between 0-100) for global validation metrics of the entry are shown in the following graphic. The table shows the number of entries on which the scores are based.



Metric	Whole archive (#Entries)	Similar resolution (#Entries, resolution range(Å))
$R_{free}$	100719	3453 (1.70-1.70)
Clashscore	112137	3876 (1.70-1.70)
Ramachandran outliers	110173	3815 (1.70-1.70)
Sidechain outliers	110143	3815 (1.70-1.70)
RSRZ outliers	101464	3491 (1.70-1.70)

The table below summarises the geometric issues observed across the polymeric chains and their fit to the electron density. The red, orange, yellow and green segments on the lower bar indicate the fraction of residues that contain outliers for  $\geq 3$ , 2, 1 and 0 types of geometric quality criteria. A grey segment represents the fraction of residues that are not modelled. The numeric value for each fraction is indicated below the corresponding segment, with a dot representing fractions  $\leq 5\%$ . The upper red bar (where present) indicates the fraction of residues that have poor fit to the electron density. The numeric value is given above the bar.

Mol	Chain	Length	Quality of chain
1	A	366	<div> <div>82%</div> <div>13%</div> <div>• •</div> </div>
1	C	366	<div> <div>2%</div> <div>81%</div> <div>13%</div> <div>• •</div> </div>
2	B	190	<div> <div>%</div> <div>87%</div> <div>12%</div> <div>•</div> </div>
2	D	190	<div> <div>2%</div> <div>83%</div> <div>16%</div> <div>•</div> </div>

## 2 Entry composition

There are 6 unique types of molecules in this entry. The entry contains 8959 atoms, of which 0 are hydrogens and 0 are deuteriums.

In the tables below, the ZeroOcc column contains the number of atoms modelled with zero occupancy, the AltConf column contains the number of residues with at least one atom in alternate conformation and the Trace column contains the number of residues modelled with at most 2 atoms.

- Molecule 1 is a protein called Gamma-glutamyltranspeptidase.

Mol	Chain	Residues	Atoms					ZeroOcc	AltConf	Trace
1	A	351	Total	C	N	O	Se	0	0	0
			2661	1680	448	522	11			
1	C	351	Total	C	N	O	Se	0	0	0
			2661	1680	448	522	11			

There are 22 discrepancies between the modelled and reference sequences:

Chain	Residue	Modelled	Actual	Comment	Reference
A	50	MSE	MET	MODIFIED RESIDUE	UNP P18956
A	99	MSE	MET	MODIFIED RESIDUE	UNP P18956
A	116	MSE	MET	MODIFIED RESIDUE	UNP P18956
A	125	MSE	MET	MODIFIED RESIDUE	UNP P18956
A	164	MSE	MET	MODIFIED RESIDUE	UNP P18956
A	233	MSE	MET	MODIFIED RESIDUE	UNP P18956
A	255	MSE	MET	MODIFIED RESIDUE	UNP P18956
A	290	MSE	MET	MODIFIED RESIDUE	UNP P18956
A	312	MSE	MET	MODIFIED RESIDUE	UNP P18956
A	323	MSE	MET	MODIFIED RESIDUE	UNP P18956
A	326	MSE	MET	MODIFIED RESIDUE	UNP P18956
C	50	MSE	MET	MODIFIED RESIDUE	UNP P18956
C	99	MSE	MET	MODIFIED RESIDUE	UNP P18956
C	116	MSE	MET	MODIFIED RESIDUE	UNP P18956
C	125	MSE	MET	MODIFIED RESIDUE	UNP P18956
C	164	MSE	MET	MODIFIED RESIDUE	UNP P18956
C	233	MSE	MET	MODIFIED RESIDUE	UNP P18956
C	255	MSE	MET	MODIFIED RESIDUE	UNP P18956
C	290	MSE	MET	MODIFIED RESIDUE	UNP P18956
C	312	MSE	MET	MODIFIED RESIDUE	UNP P18956
C	323	MSE	MET	MODIFIED RESIDUE	UNP P18956
C	326	MSE	MET	MODIFIED RESIDUE	UNP P18956

- Molecule 2 is a protein called Gamma-glutamyltranspeptidase.

Mol	Chain	Residues	Atoms					ZeroOcc	AltConf	Trace
2	B	190	Total 1407	C 882	N 238	O 282	Se 5	0	0	0
2	D	190	Total 1407	C 882	N 238	O 282	Se 5	0	0	0

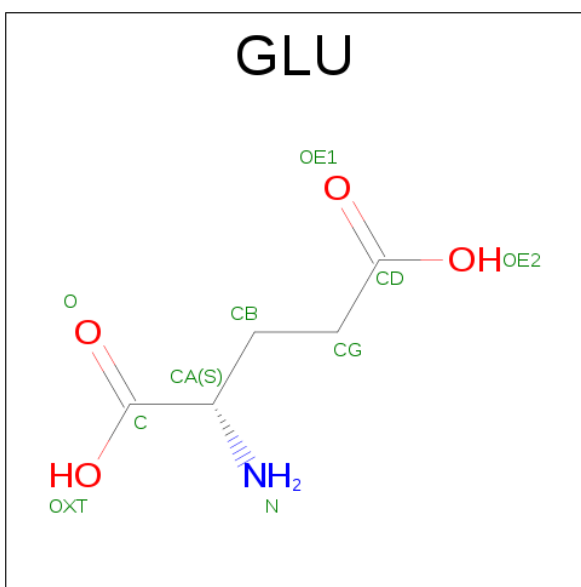
There are 10 discrepancies between the modelled and reference sequences:

Chain	Residue	Modelled	Actual	Comment	Reference
B	431	MSE	MET	MODIFIED RESIDUE	UNP P18956
B	464	MSE	MET	MODIFIED RESIDUE	UNP P18956
B	494	MSE	MET	MODIFIED RESIDUE	UNP P18956
B	550	MSE	MET	MODIFIED RESIDUE	UNP P18956
B	557	MSE	MET	MODIFIED RESIDUE	UNP P18956
D	431	MSE	MET	MODIFIED RESIDUE	UNP P18956
D	464	MSE	MET	MODIFIED RESIDUE	UNP P18956
D	494	MSE	MET	MODIFIED RESIDUE	UNP P18956
D	550	MSE	MET	MODIFIED RESIDUE	UNP P18956
D	557	MSE	MET	MODIFIED RESIDUE	UNP P18956

- Molecule 3 is CALCIUM ION (three-letter code: CA) (formula: Ca).

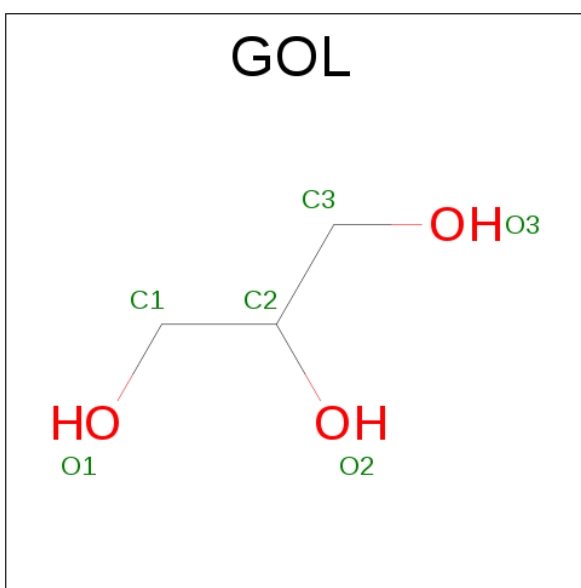
Mol	Chain	Residues	Atoms		ZeroOcc	AltConf
3	B	1	Total 1	Ca 1	0	0
3	D	1	Total 1	Ca 1	0	0

- Molecule 4 is GLUTAMIC ACID (three-letter code: GLU) (formula: C<sub>5</sub>H<sub>9</sub>NO<sub>4</sub>).



Mol	Chain	Residues	Atoms				ZeroOcc	AltConf
4	B	1	Total	C	N	O	0	0
			10	5	1	4		
4	D	1	Total	C	N	O	0	0
			10	5	1	4		

- Molecule 5 is GLYCEROL (three-letter code: GOL) (formula:  $C_3H_8O_3$ ).



Mol	Chain	Residues	Atoms			ZeroOcc	AltConf
5	A	1	Total	C	O	0	0
			6	3	3		

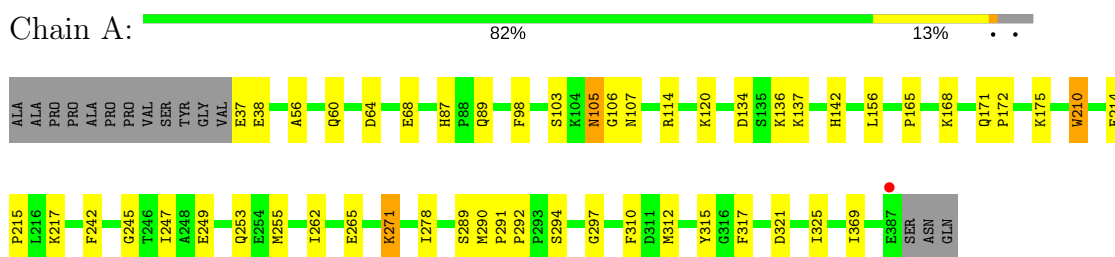
- Molecule 6 is water.

Mol	Chain	Residues	Atoms		ZeroOcc	AltConf
6	A	277	Total 277	O 277	0	0
6	B	140	Total 140	O 140	0	0
6	C	243	Total 243	O 243	0	0
6	D	135	Total 135	O 135	0	0

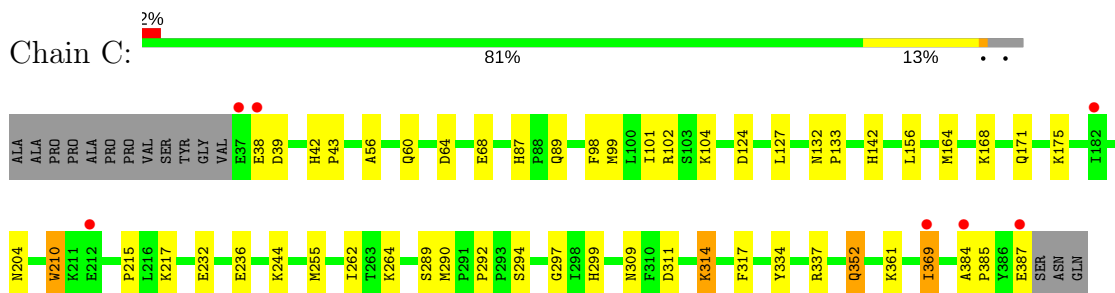
### 3 Residue-property plots

These plots are drawn for all protein, RNA and DNA chains in the entry. The first graphic for a chain summarises the proportions of the various outlier classes displayed in the second graphic. The second graphic shows the sequence view annotated by issues in geometry and electron density. Residues are color-coded according to the number of geometric quality criteria for which they contain at least one outlier: green = 0, yellow = 1, orange = 2 and red = 3 or more. A red dot above a residue indicates a poor fit to the electron density ( $RSRZ > 2$ ). Stretches of 2 or more consecutive residues without any outlier are shown as a green connector. Residues present in the sample, but not in the model, are shown in grey.

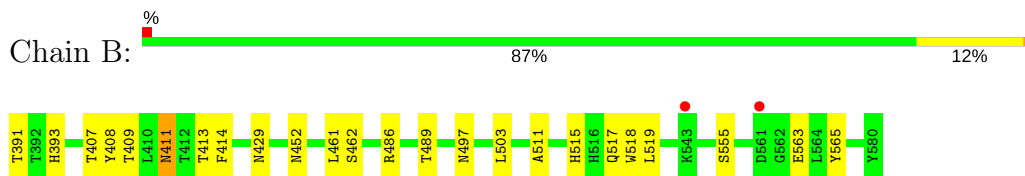
#### • Molecule 1: Gamma-glutamyltranspeptidase



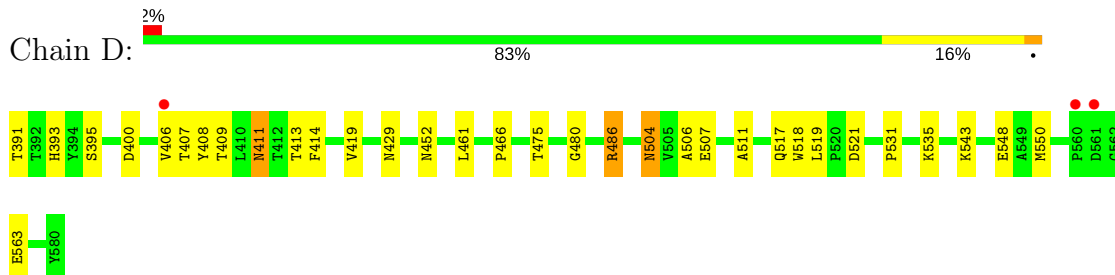
#### • Molecule 1: Gamma-glutamyltranspeptidase



#### • Molecule 2: Gamma-glutamyltranspeptidase



#### • Molecule 2: Gamma-glutamyltranspeptidase



## 4 Data and refinement statistics

Property	Value	Source
Space group	P 21 21 21	Depositor
Cell constants a, b, c, $\alpha$ , $\beta$ , $\gamma$	77.70Å 126.50Å 129.20Å 90.00° 90.00° 90.00°	Depositor
Resolution (Å)	46.24 – 1.70 46.24 – 1.70	Depositor EDS
% Data completeness (in resolution range)	99.5 (46.24-1.70) 99.7 (46.24-1.70)	Depositor EDS
$R_{merge}$	0.11	Depositor
$R_{sym}$	(Not available)	Depositor
$\langle I/\sigma(I) \rangle$ <sup>1</sup>	2.31 (at 1.70Å)	Xtriage
Refinement program	CNS 1.1	Depositor
R, $R_{free}$	0.194 , 0.212 0.195 , 0.213	Depositor DCC
$R_{free}$ test set	7015 reflections (5.02%)	DCC
Wilson B-factor (Å <sup>2</sup> )	21.6	Xtriage
Anisotropy	0.443	Xtriage
Bulk solvent $k_{sol}$ (e/Å <sup>3</sup> ), $B_{sol}$ (Å <sup>2</sup> )	0.37 , 44.7	EDS
L-test for twinning <sup>2</sup>	$\langle  L  \rangle = 0.50$ , $\langle L^2 \rangle = 0.33$	Xtriage
Estimated twinning fraction	0.009 for -h,l,k	Xtriage
$F_o, F_c$ correlation	0.96	EDS
Total number of atoms	8959	wwPDB-VP
Average B, all atoms (Å <sup>2</sup> )	26.0	wwPDB-VP

Xtriage's analysis on translational NCS is as follows: *The largest off-origin peak in the Patterson function is 3.79% of the height of the origin peak. No significant pseudotranslation is detected.*

<sup>1</sup>Intensities estimated from amplitudes.

<sup>2</sup>Theoretical values of  $\langle |L| \rangle$ ,  $\langle L^2 \rangle$  for acentric reflections are 0.5, 0.333 respectively for untwinned datasets, and 0.375, 0.2 for perfectly twinned datasets.

## 5 Model quality [i](#)

### 5.1 Standard geometry [i](#)

Bond lengths and bond angles in the following residue types are not validated in this section: GOL, CA

The Z score for a bond length (or angle) is the number of standard deviations the observed value is removed from the expected value. A bond length (or angle) with  $|Z| > 5$  is considered an outlier worth inspection. RMSZ is the root-mean-square of all Z scores of the bond lengths (or angles).

Mol	Chain	Bond lengths		Bond angles	
		RMSZ	$\# Z  > 5$	RMSZ	$\# Z  > 5$
1	A	0.29	0/2703	0.57	0/3639
1	C	0.29	0/2703	0.57	0/3639
2	B	0.30	0/1429	0.68	0/1937
2	D	0.30	0/1429	0.67	0/1937
All	All	0.29	0/8264	0.61	0/11152

There are no bond length outliers.

There are no bond angle outliers.

There are no chirality outliers.

There are no planarity outliers.

### 5.2 Too-close contacts [i](#)

In the following table, the Non-H and H(model) columns list the number of non-hydrogen atoms and hydrogen atoms in the chain respectively. The H(added) column lists the number of hydrogen atoms added and optimized by MolProbity. The Clashes column lists the number of clashes within the asymmetric unit, whereas Symm-Clashes lists symmetry related clashes.

Mol	Chain	Non-H	H(model)	H(added)	Clashes	Symm-Clashes
1	A	2661	0	2626	54	0
1	C	2661	0	2626	40	0
2	B	1407	0	1392	15	0
2	D	1407	0	1392	28	0
3	B	1	0	0	0	0
3	D	1	0	0	0	0
4	B	10	0	5	1	0
4	D	10	0	5	0	0
5	A	6	0	8	0	0

*Continued on next page...*

*Continued from previous page...*

Mol	Chain	Non-H	H(model)	H(added)	Clashes	Symm-Clashes
6	A	277	0	0	2	0
6	B	140	0	0	1	0
6	C	243	0	0	3	0
6	D	135	0	0	1	0
All	All	8959	0	8054	125	0

The all-atom clashscore is defined as the number of clashes found per 1000 atoms (including hydrogen atoms). The all-atom clashscore for this structure is 8.

The worst 5 of 125 close contacts within the same asymmetric unit are listed below, sorted by their clash magnitude.

Atom-1	Atom-2	Interatomic distance (Å)	Clash overlap (Å)
1:A:98:PHE:CD1	1:A:290:MSE:HE2	2.15	0.81
1:C:311:ASP:OD1	1:C:314:LYS:HG3	1.81	0.80
1:C:352:GLN:H	1:C:352:GLN:NE2	1.80	0.80
1:A:310:PHE:CB	1:A:312:MSE:HE3	2.12	0.79
1:A:290:MSE:HE3	1:A:291:PRO:HD2	1.70	0.74

There are no symmetry-related clashes.

## 5.3 Torsion angles [i](#)

### 5.3.1 Protein backbone [i](#)

In the following table, the Percentiles column shows the percent Ramachandran outliers of the chain as a percentile score with respect to all X-ray entries followed by that with respect to entries of similar resolution.

The Analysed column shows the number of residues for which the backbone conformation was analysed, and the total number of residues.

Mol	Chain	Analysed	Favoured	Allowed	Outliers	Percentiles	
1	A	349/366 (95%)	341 (98%)	8 (2%)	0	100	100
1	C	349/366 (95%)	342 (98%)	7 (2%)	0	100	100
2	B	188/190 (99%)	183 (97%)	4 (2%)	1 (0%)	32	15
2	D	188/190 (99%)	184 (98%)	3 (2%)	1 (0%)	32	15
All	All	1074/1112 (97%)	1050 (98%)	22 (2%)	2 (0%)	51	31

All (2) Ramachandran outliers are listed below:

Mol	Chain	Res	Type
2	B	411	ASN
2	D	411	ASN

### 5.3.2 Protein sidechains [i](#)

In the following table, the Percentiles column shows the percent sidechain outliers of the chain as a percentile score with respect to all X-ray entries followed by that with respect to entries of similar resolution.

The Analysed column shows the number of residues for which the sidechain conformation was analysed, and the total number of residues.

Mol	Chain	Analysed	Rotameric	Outliers	Percentiles	
1	A	276/276 (100%)	272 (99%)	4 (1%)	71	58
1	C	276/276 (100%)	271 (98%)	5 (2%)	64	47
2	B	154/149 (103%)	150 (97%)	4 (3%)	51	31
2	D	154/149 (103%)	150 (97%)	4 (3%)	51	31
All	All	860/850 (101%)	843 (98%)	17 (2%)	60	42

5 of 17 residues with a non-rotameric sidechain are listed below:

Mol	Chain	Res	Type
2	B	555	SER
1	C	39	ASP
2	D	408	TYR
2	B	519	LEU
2	D	486	ARG

Some sidechains can be flipped to improve hydrogen bonding and reduce clashes. 5 of 23 such sidechains are listed below:

Mol	Chain	Res	Type
2	B	452	ASN
1	C	42	HIS
2	D	497	ASN
2	B	515	HIS
1	C	87	HIS

### 5.3.3 RNA [i](#)

There are no RNA molecules in this entry.

## 5.4 Non-standard residues in protein, DNA, RNA chains [i](#)

There are no non-standard protein/DNA/RNA residues in this entry.

## 5.5 Carbohydrates [i](#)

There are no carbohydrates in this entry.

## 5.6 Ligand geometry [i](#)

Of 5 ligands modelled in this entry, 2 are monoatomic - leaving 3 for Mogul analysis.

In the following table, the Counts columns list the number of bonds (or angles) for which Mogul statistics could be retrieved, the number of bonds (or angles) that are observed in the model and the number of bonds (or angles) that are defined in the chemical component dictionary. The Link column lists molecule types, if any, to which the group is linked. The Z score for a bond length (or angle) is the number of standard deviations the observed value is removed from the expected value. A bond length (or angle) with  $|Z| > 2$  is considered an outlier worth inspection. RMSZ is the root-mean-square of all Z scores of the bond lengths (or angles).

Mol	Type	Chain	Res	Link	Bond lengths			Bond angles		
					Counts	RMSZ	$\# Z  > 2$	Counts	RMSZ	$\# Z  > 2$
5	GOL	A	703	-	5,5,5	0.25	0	5,5,5	0.26	0
4	GLU	B	601	-	1,9,9	0.01	0	1,11,11	0.06	0
4	GLU	D	602	-	1,9,9	0.05	0	1,11,11	0.06	0

In the following table, the Chirals column lists the number of chiral outliers, the number of chiral centers analysed, the number of these observed in the model and the number defined in the chemical component dictionary. Similar counts are reported in the Torsion and Rings columns. '-' means no outliers of that kind were identified.

Mol	Type	Chain	Res	Link	Chirals	Torsions	Rings
5	GOL	A	703	-	-	0/4/4/4	0/0/0/0
4	GLU	B	601	-	-	0/3/9/9	0/0/0/0
4	GLU	D	602	-	-	0/3/9/9	0/0/0/0

There are no bond length outliers.

There are no bond angle outliers.

There are no chirality outliers.

There are no torsion outliers.

There are no ring outliers.

1 monomer is involved in 1 short contact:

Mol	Chain	Res	Type	Clashes	Symm-Clashes
4	B	601	GLU	1	0

## 5.7 Other polymers [i](#)

There are no such residues in this entry.

## 5.8 Polymer linkage issues [i](#)

There are no chain breaks in this entry.

## 6 Fit of model and data [i](#)

### 6.1 Protein, DNA and RNA chains [i](#)

In the following table, the column labelled ‘#RSRZ> 2’ contains the number (and percentage) of RSRZ outliers, followed by percent RSRZ outliers for the chain as percentile scores relative to all X-ray entries and entries of similar resolution. The OWAB column contains the minimum, median, 95<sup>th</sup> percentile and maximum values of the occupancy-weighted average B-factor per residue. The column labelled ‘Q< 0.9’ lists the number of (and percentage) of residues with an average occupancy less than 0.9.

Mol	Chain	Analysed	<RSRZ>	#RSRZ>2	OWAB(Å <sup>2</sup> )	Q<0.9
1	A	340/366 (92%)	-0.15	1 (0%) 93 94	18, 25, 37, 52	0
1	C	340/366 (92%)	0.06	7 (2%) 64 69	17, 25, 40, 57	0
2	B	185/190 (97%)	-0.01	2 (1%) 80 84	17, 22, 33, 50	0
2	D	185/190 (97%)	0.05	3 (1%) 72 77	16, 23, 36, 48	0
All	All	1050/1112 (94%)	-0.02	13 (1%) 79 83	16, 24, 38, 57	0

The worst 5 of 13 RSRZ outliers are listed below:

Mol	Chain	Res	Type	RSRZ
1	C	38	GLU	5.2
2	D	561	ASP	3.9
2	D	560	PRO	3.8
2	B	561	ASP	3.5
1	C	387	GLU	3.4

### 6.2 Non-standard residues in protein, DNA, RNA chains [i](#)

There are no non-standard protein/DNA/RNA residues in this entry.

### 6.3 Carbohydrates [i](#)

There are no carbohydrates in this entry.

### 6.4 Ligands [i](#)

In the following table, the Atoms column lists the number of modelled atoms in the group and the number defined in the chemical component dictionary. LLDF column lists the quality of electron density of the group with respect to its neighbouring residues in protein, DNA or RNA chains. The B-factors column lists the minimum, median, 95<sup>th</sup> percentile and maximum values of B factors

of atoms in the group. The column labelled 'Q < 0.9' lists the number of atoms with occupancy less than 0.9.

Mol	Type	Chain	Res	Atoms	RSCC	RSR	LLDF	B-factors( $\text{\AA}^2$ )	Q<0.9
5	GOL	A	703	6/6	0.85	0.15	1.80	41,44,44,45	0
4	GLU	B	601	10/10	0.92	0.10	0.16	22,24,30,34	0
4	GLU	D	602	10/10	0.93	0.09	-0.30	20,23,30,32	0
3	CA	B	701	1/1	0.98	0.05	-2.59	24,24,24,24	0
3	CA	D	702	1/1	0.99	0.04	-3.02	24,24,24,24	0

## 6.5 Other polymers [i](#)

There are no such residues in this entry.