



Full wwPDB X-ray Structure Validation Report ⓘ

Feb 13, 2017 – 01:33 pm GMT

PDB ID : 1DDU
Title : E. COLI THYMIDYLATE SYNTHASE IN COMPLEX WITH CB3717 AND
2',5'-DIDEOXYURIDINE (DDURD)
Authors : Stout, T.J.; Sage, C.R.; Stroud, R.M.
Deposited on : 1997-06-26
Resolution : 2.10 Å(reported)

This is a Full wwPDB X-ray Structure Validation Report for a publicly released PDB entry.

We welcome your comments at validation@mail.wwpdb.org

A user guide is available at

<http://wwpdb.org/validation/2016/XrayValidationReportHelp>

with specific help available everywhere you see the ⓘ symbol.

The following versions of software and data (see [references ⓘ](#)) were used in the production of this report:

MolProbity : 4.02b-467
Mogul : 1.7.2 (RC1), CSD as538be (2017)
Xtriage (Phenix) : **NOT EXECUTED**
EDS : **NOT EXECUTED**
Percentile statistics : 20161228.v01 (using entries in the PDB archive December 28th 2016)
Ideal geometry (proteins) : Engh & Huber (2001)
Ideal geometry (DNA, RNA) : Parkinson et al. (1996)
Validation Pipeline (wwPDB-VP) : recalc28949

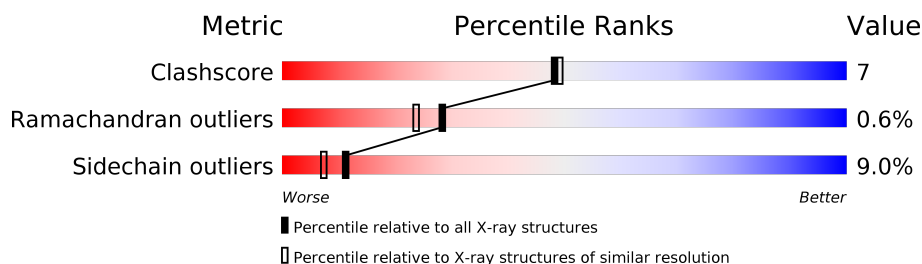
1 Overall quality at a glance

The following experimental techniques were used to determine the structure:

X-RAY DIFFRACTION

The reported resolution of this entry is 2.10 Å.

Percentile scores (ranging between 0-100) for global validation metrics of the entry are shown in the following graphic. The table shows the number of entries on which the scores are based.



Metric	Whole archive (#Entries)	Similar resolution (#Entries, resolution range(Å))
Clashscore	112137	4788 (2.10-2.10)
Ramachandran outliers	110173	4740 (2.10-2.10)
Sidechain outliers	110143	4741 (2.10-2.10)

The table below summarises the geometric issues observed across the polymeric chains and their fit to the electron density. The red, orange, yellow and green segments on the lower bar indicate the fraction of residues that contain outliers for ≥ 3 , 2, 1 and 0 types of geometric quality criteria. A grey segment represents the fraction of residues that are not modelled. The numeric value for each fraction is indicated below the corresponding segment, with a dot representing fractions $\leq 5\%$. The upper red bar (where present) indicates the fraction of residues that have poor fit to the electron density. The numeric value is given above the bar.

Note EDS was not executed.

Mol	Chain	Length	Quality of chain
1	A	265	
1	B	265	

The following table lists non-polymeric compounds, carbohydrate monomers and non-standard residues in protein, DNA, RNA chains that are outliers for geometric or electron-density-fit criteria:

Mol	Type	Chain	Res	Chirality	Geometry	Clashes	Electron density
2	PO4	B	531	-	X	-	-

2 Entry composition [i](#)

There are 5 unique types of molecules in this entry. The entry contains 4482 atoms, of which 0 are hydrogens and 0 are deuteriums.

In the tables below, the ZeroOcc column contains the number of atoms modelled with zero occupancy, the AltConf column contains the number of residues with at least one atom in alternate conformation and the Trace column contains the number of residues modelled with at most 2 atoms.

- Molecule 1 is a protein called THYMIDYLATE SYNTHASE.

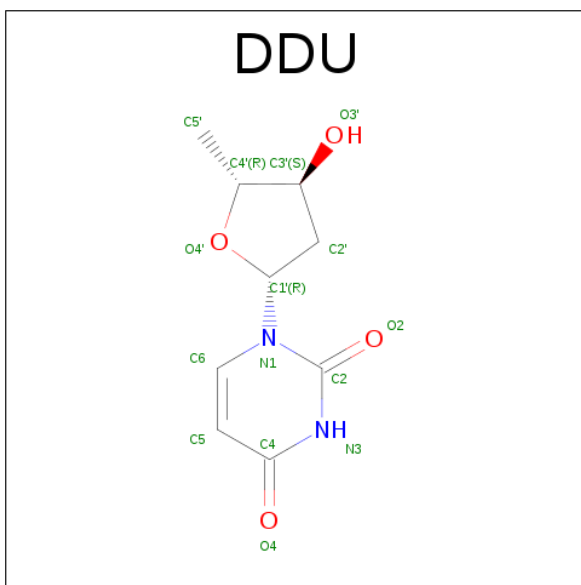
Mol	Chain	Residues	Atoms					ZeroOcc	AltConf	Trace
1	A	265	Total	C	N	O	S	0	0	0
			2153	1375	371	395	12			
1	B	265	Total	C	N	O	S	0	0	0
			2153	1375	371	395	12			

- Molecule 2 is PHOSPHATE ION (three-letter code: PO4) (formula: O_4P).



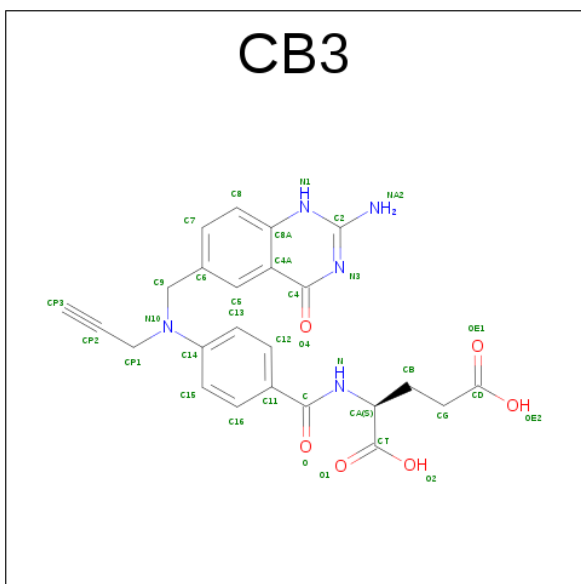
Mol	Chain	Residues	Atoms			ZeroOcc	AltConf
2	A	1	Total	O	P	0	0
			5	4	1		
2	B	1	Total	O	P	0	0
			5	4	1		

- Molecule 3 is 2'-5'DIDEOXYURIDINE (three-letter code: DDU) (formula: $C_9H_{12}N_2O_4$).



Mol	Chain	Residues	Atoms				ZeroOcc	AltConf
3	A	1	Total	C	N	O	0	0
			15	9	2	4		
3	B	1	Total	C	N	O	0	0
			15	9	2	4		

- Molecule 4 is 10-PROPARGYL-5,8-DIDEAZAFOLIC ACID (three-letter code: CB3) (formula: $C_{24}H_{23}N_5O_6$).



Mol	Chain	Residues	Atoms				ZeroOcc	AltConf
4	A	1	Total	C	N	O	0	0
			35	24	5	6		

Continued on next page...

Continued from previous page...

Mol	Chain	Residues	Atoms				ZeroOcc	AltConf
4	B	1	Total	C	N	O	0	0
			35	24	5	6		

- Molecule 5 is water.

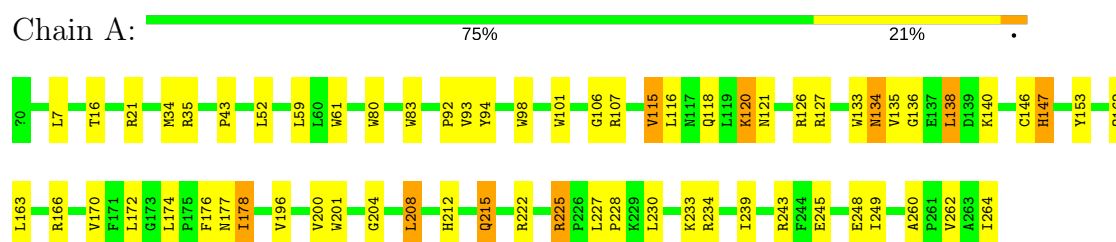
Mol	Chain	Residues	Atoms		ZeroOcc	AltConf
5	A	39	Total	O	0	0
			39	39		
5	B	27	Total	O	0	0
			27	27		

3 Residue-property plots [i](#)

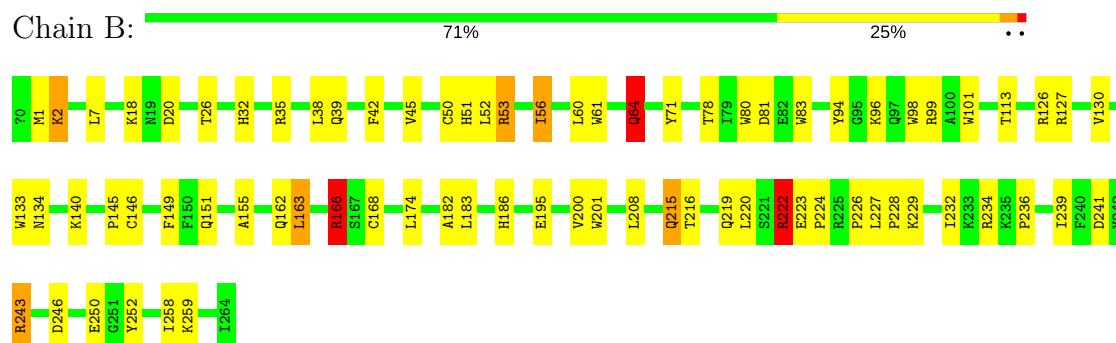
These plots are drawn for all protein, RNA and DNA chains in the entry. The first graphic for a chain summarises the proportions of the various outlier classes displayed in the second graphic. The second graphic shows the sequence view annotated by issues in geometry and electron density. Residues are color-coded according to the number of geometric quality criteria for which they contain at least one outlier: green = 0, yellow = 1, orange = 2 and red = 3 or more. A red dot above a residue indicates a poor fit to the electron density ($RSRZ > 2$). Stretches of 2 or more consecutive residues without any outlier are shown as a green connector. Residues present in the sample, but not in the model, are shown in grey.

Note EDS was not executed.

• Molecule 1: THYMIDYLATE SYNTHASE



• Molecule 1: THYMIDYLATE SYNTHASE



4 Data and refinement statistics

Xtriage (Phenix) and EDS were not executed - this section is therefore incomplete.

Property	Value	Source
Space group	P 63	Depositor
Cell constants a, b, c, α , β , γ	127.41 Å 127.41 Å 68.20 Å 90.00° 90.00° 120.00°	Depositor
Resolution (Å)	8.00 – 2.10	Depositor
% Data completeness (in resolution range)	78.4 (8.00-2.10)	Depositor
R_{merge}	0.07	Depositor
R_{sym}	0.07	Depositor
Refinement program	X-PLOR 3.843	Depositor
R, R_{free}	0.188 , 0.272	Depositor
Estimated twinning fraction	No twinning to report.	Xtriage
Total number of atoms	4482	wwPDB-VP
Average B, all atoms (Å ²)	24.0	wwPDB-VP

5 Model quality ⓘ

5.1 Standard geometry ⓘ

Bond lengths and bond angles in the following residue types are not validated in this section: CB3, FMT, PO4, DDU

The Z score for a bond length (or angle) is the number of standard deviations the observed value is removed from the expected value. A bond length (or angle) with $|Z| > 5$ is considered an outlier worth inspection. RMSZ is the root-mean-square of all Z scores of the bond lengths (or angles).

Mol	Chain	Bond lengths		Bond angles	
		RMSZ	# Z >5	RMSZ	# Z >5
1	A	0.82	0/2210	1.54	40/3000 (1.3%)
1	B	0.79	0/2210	1.52	34/3000 (1.1%)
All	All	0.80	0/4420	1.53	74/6000 (1.2%)

There are no bond length outliers.

All (74) bond angle outliers are listed below:

Mol	Chain	Res	Type	Atoms	Z	Observed(°)	Ideal(°)
1	B	166	ARG	NE-CZ-NH1	10.55	125.58	120.30
1	A	234	ARG	NE-CZ-NH2	-10.33	115.13	120.30
1	A	98	TRP	CD1-CG-CD2	9.33	113.76	106.30
1	B	83	TRP	CD1-CG-CD2	8.88	113.41	106.30
1	A	234	ARG	NE-CZ-NH1	8.86	124.73	120.30
1	B	61	TRP	CD1-CG-CD2	8.79	113.33	106.30
1	B	133	TRP	CD1-CG-CD2	8.73	113.29	106.30
1	A	61	TRP	CD1-CG-CD2	8.63	113.21	106.30
1	B	80	TRP	CD1-CG-CD2	8.43	113.04	106.30
1	A	80	TRP	CD1-CG-CD2	8.35	112.98	106.30
1	B	201	TRP	CD1-CG-CD2	8.19	112.85	106.30
1	B	98	TRP	CD1-CG-CD2	8.19	112.85	106.30
1	B	83	TRP	CE2-CD2-CG	-8.15	100.78	107.30
1	A	83	TRP	CD1-CG-CD2	8.14	112.81	106.30
1	B	201	TRP	CE2-CD2-CG	-7.98	100.91	107.30
1	A	80	TRP	CE2-CD2-CG	-7.83	101.03	107.30
1	A	61	TRP	CE2-CD2-CG	-7.76	101.09	107.30
1	A	98	TRP	CE2-CD2-CG	-7.75	101.10	107.30
1	B	80	TRP	CE2-CD2-CG	-7.73	101.12	107.30
1	A	201	TRP	CD1-CG-CD2	7.68	112.45	106.30
1	B	133	TRP	CE2-CD2-CG	-7.66	101.18	107.30
1	B	61	TRP	CE2-CD2-CG	-7.57	101.24	107.30

Continued on next page...

Continued from previous page...

Mol	Chain	Res	Type	Atoms	Z	Observed(°)	Ideal(°)
1	B	201	TRP	CG-CD2-CE3	7.56	140.70	133.90
1	A	133	TRP	CD1-CG-CD2	7.38	112.20	106.30
1	B	98	TRP	CE2-CD2-CG	-7.36	101.42	107.30
1	B	126	ARG	NE-CZ-NH1	7.36	123.98	120.30
1	A	133	TRP	CE2-CD2-CG	-7.33	101.44	107.30
1	A	126	ARG	NE-CZ-NH2	-7.26	116.67	120.30
1	A	225	ARG	NE-CZ-NH1	7.24	123.92	120.30
1	A	201	TRP	CE2-CD2-CG	-7.19	101.55	107.30
1	A	83	TRP	CE2-CD2-CG	-7.03	101.67	107.30
1	B	201	TRP	CB-CG-CD1	-7.00	117.90	127.00
1	A	101	TRP	CE2-CD2-CG	-6.89	101.79	107.30
1	B	101	TRP	CD1-CG-CD2	6.80	111.74	106.30
1	A	225	ARG	NE-CZ-NH2	-6.39	117.10	120.30
1	B	126	ARG	NE-CZ-NH2	-6.32	117.14	120.30
1	B	166	ARG	NE-CZ-NH2	-6.32	117.14	120.30
1	B	127	ARG	NE-CZ-NH2	-6.29	117.16	120.30
1	B	101	TRP	CE2-CD2-CG	-6.28	102.27	107.30
1	A	196	VAL	CG1-CB-CG2	-6.25	100.89	110.90
1	B	53	ARG	CA-CB-CG	6.25	127.15	113.40
1	B	222	ARG	NE-CZ-NH1	6.17	123.39	120.30
1	A	101	TRP	CD1-CG-CD2	6.16	111.23	106.30
1	B	133	TRP	CG-CD1-NE1	-6.02	104.08	110.10
1	B	98	TRP	CG-CD2-CE3	5.77	139.09	133.90
1	A	133	TRP	CG-CD2-CE3	5.75	139.08	133.90
1	A	98	TRP	CG-CD1-NE1	-5.74	104.36	110.10
1	A	34	MET	CA-CB-CG	5.67	122.95	113.30
1	A	222	ARG	NE-CZ-NH1	5.63	123.12	120.30
1	A	35	ARG	NE-CZ-NH1	5.61	123.10	120.30
1	A	243	ARG	NE-CZ-NH1	5.58	123.09	120.30
1	B	163	LEU	CA-CB-CG	5.58	128.13	115.30
1	A	201	TRP	CG-CD2-CE3	5.57	138.91	133.90
1	B	208	LEU	CA-CB-CG	5.53	128.01	115.30
1	A	201	TRP	CG-CD1-NE1	-5.49	104.61	110.10
1	A	35	ARG	NE-CZ-NH2	-5.46	117.57	120.30
1	B	35	ARG	NE-CZ-NH2	-5.44	117.58	120.30
1	A	243	ARG	NE-CZ-NH2	-5.37	117.61	120.30
1	A	153	TYR	CB-CG-CD1	-5.30	117.82	121.00
1	A	52	LEU	CB-CA-C	-5.26	100.21	110.20
1	B	149	PHE	CB-CG-CD2	-5.25	117.12	120.80
1	A	61	TRP	CG-CD1-NE1	-5.21	104.89	110.10
1	A	83	TRP	CG-CD1-NE1	-5.19	104.91	110.10
1	A	94	TYR	CB-CG-CD2	-5.17	117.90	121.00

Continued on next page...

Continued from previous page...

Mol	Chain	Res	Type	Atoms	Z	Observed(°)	Ideal(°)
1	A	147	HIS	CA-CB-CG	5.16	122.38	113.60
1	B	201	TRP	CG-CD1-NE1	-5.16	104.94	110.10
1	B	99	ARG	NE-CZ-NH1	5.16	122.88	120.30
1	A	107	ARG	NE-CZ-NH1	5.15	122.88	120.30
1	B	83	TRP	CG-CD1-NE1	-5.15	104.95	110.10
1	B	99	ARG	NE-CZ-NH2	-5.12	117.74	120.30
1	B	64	GLN	CB-CG-CD	5.11	124.88	111.60
1	A	83	TRP	CG-CD2-CE3	5.06	138.45	133.90
1	A	133	TRP	CG-CD1-NE1	-5.04	105.06	110.10
1	A	201	TRP	CB-CG-CD1	-5.03	120.46	127.00

There are no chirality outliers.

There are no planarity outliers.

5.2 Too-close contacts ⓘ

In the following table, the Non-H and H(model) columns list the number of non-hydrogen atoms and hydrogen atoms in the chain respectively. The H(added) column lists the number of hydrogen atoms added and optimized by MolProbity. The Clashes column lists the number of clashes within the asymmetric unit, whereas Symm-Clashes lists symmetry related clashes.

Mol	Chain	Non-H	H(model)	H(added)	Clashes	Symm-Clashes
1	A	2153	0	2080	28	0
1	B	2153	0	2080	29	0
2	A	5	0	0	1	0
2	B	5	0	0	1	0
3	A	15	0	12	2	0
3	B	15	0	12	3	0
4	A	35	0	21	2	0
4	B	35	0	21	4	0
5	A	39	0	0	4	0
5	B	27	0	0	2	0
All	All	4482	0	4226	60	0

The all-atom clashscore is defined as the number of clashes found per 1000 atoms (including hydrogen atoms). The all-atom clashscore for this structure is 7.

All (60) close contacts within the same asymmetric unit are listed below, sorted by their clash magnitude.

Atom-1	Atom-2	Interatomic distance (Å)	Clash overlap (Å)
1:B:215:GLN:HE21	1:B:215:GLN:H	1.32	0.78
1:A:264:ILE:HA	5:A:585:HOH:O	1.93	0.68
1:A:170:VAL:HB	1:A:208:LEU:HD13	1.76	0.68
1:B:168:CYS:SG	1:B:174:LEU:HD13	2.36	0.65
1:A:215:GLN:HE21	1:A:215:GLN:H	1.44	0.65
1:A:92:PRO:HG2	1:A:140:LYS:HE3	1.80	0.63
4:B:535:CB3:H13	4:B:535:CB3:CP2	2.29	0.62
1:A:135:VAL:HA	1:A:138:LEU:HD22	1.81	0.62
1:A:172:LEU:HD21	1:A:262:VAL:HG22	1.82	0.61
1:A:43:PRO:HB2	1:A:178:ILE:HD11	1.82	0.61
1:B:7:LEU:HD13	1:B:32:HIS:CD2	2.34	0.61
1:B:45:VAL:CG2	1:B:50:CYS:SG	2.89	0.61
1:B:234:ARG:O	1:B:236:PRO:HD3	2.04	0.57
1:B:228:PRO:HB3	1:B:252:TYR:HB2	1.86	0.57
4:A:534:CB3:CP2	4:A:534:CB3:H15	2.35	0.57
1:A:21:ARG:HD3	2:A:530:PO4:O4	2.06	0.56
1:A:215:GLN:NE2	1:A:215:GLN:H	2.04	0.55
1:A:16:THR:HG21	1:B:155:ALA:HB1	1.89	0.55
1:B:145:PRO:O	1:B:166:ARG:HD2	2.06	0.55
1:B:39:GLN:HE22	1:B:195:GLU:HG2	1.73	0.54
1:A:227:LEU:HD12	1:A:228:PRO:HD2	1.91	0.53
1:B:64:GLN:HG2	5:B:571:HOH:O	2.09	0.52
1:A:174:LEU:O	1:A:178:ILE:HG23	2.11	0.51
1:B:2:LYS:HD2	1:B:2:LYS:H	1.76	0.51
2:B:531:PO4:O4	3:B:533:DDU:H5'3	2.10	0.50
1:A:146:CYS:SG	3:A:532:DDU:H2'1	2.52	0.50
1:B:182:ALA:O	1:B:186:HIS:HD2	1.96	0.49
1:B:146:CYS:HA	1:B:166:ARG:HD3	1.95	0.48
1:A:208:LEU:HA	5:A:540:HOH:O	2.13	0.48
1:B:232:ILE:HA	1:B:246:ASP:O	2.14	0.47
1:B:146:CYS:SG	3:B:533:DDU:C6	3.03	0.46
1:B:42:PHE:HB3	1:B:228:PRO:HG2	1.97	0.46
1:A:120:LYS:HG3	1:A:121:ASN:OD1	2.16	0.45
1:A:147:HIS:HB2	1:A:163:LEU:HD11	1.98	0.45
1:A:115:VAL:HA	1:A:118:GLN:HE21	1.82	0.45
1:A:134:ASN:HD22	1:A:136:GLY:H	1.64	0.45
1:B:52:LEU:O	1:B:56:ILE:HG22	2.17	0.44
1:A:212:HIS:CD2	1:A:260:ALA:HB1	2.53	0.44
1:A:116:LEU:HD11	1:A:239:ILE:HG21	1.99	0.44
1:A:127:ARG:HG3	1:B:166:ARG:NH2	2.33	0.44
1:B:229:LYS:HB2	1:B:250:GLU:HG3	1.99	0.43
1:A:233:LYS:HE3	1:A:248:GLU:HB2	2.00	0.43

Continued on next page...

Continued from previous page...

Atom-1	Atom-2	Interatomic distance (Å)	Clash overlap (Å)
1:B:113:THR:HG21	5:B:554:HOH:O	2.17	0.43
1:A:106:GLY:HA3	5:A:555:HOH:O	2.18	0.43
1:B:216:THR:O	1:B:220:LEU:HB2	2.19	0.43
1:B:223:GLU:HA	1:B:224:PRO:HD3	1.85	0.43
1:B:45:VAL:HG22	1:B:50:CYS:SG	2.58	0.43
1:B:45:VAL:HG23	1:B:50:CYS:SG	2.59	0.42
1:B:71:TYR:OH	1:B:243:ARG:NH2	2.53	0.42
1:B:219:GLN:HA	1:B:222:ARG:HG3	2.01	0.42
1:A:204:GLY:HA3	1:B:151:GLN:HE22	1.84	0.42
1:A:177:ASN:HD21	4:A:534:CB3:CP3	2.32	0.42
1:B:56:ILE:O	1:B:60:LEU:HG	2.20	0.41
1:A:146:CYS:SG	3:A:532:DDU:C6	3.08	0.41
1:A:208:LEU:HD12	5:A:540:HOH:O	2.19	0.41
1:B:162:GLN:HA	1:B:200:VAL:O	2.21	0.41
4:B:535:CB3:C13	4:B:535:CB3:CP2	2.96	0.41
1:A:162:GLN:HA	1:A:200:VAL:O	2.21	0.41
3:B:533:DDU:O4	4:B:535:CB3:CP3	2.69	0.41
4:B:535:CB3:CP3	4:B:535:CB3:H13	2.51	0.40

There are no symmetry-related clashes.

5.3 Torsion angles

5.3.1 Protein backbone

In the following table, the Percentiles column shows the percent Ramachandran outliers of the chain as a percentile score with respect to all X-ray entries followed by that with respect to entries of similar resolution.

The Analysed column shows the number of residues for which the backbone conformation was analysed, and the total number of residues.

Mol	Chain	Analysed	Favoured	Allowed	Outliers	Percentiles	
1	A	263/265 (99%)	247 (94%)	15 (6%)	1 (0%)	38	35
1	B	263/265 (99%)	247 (94%)	14 (5%)	2 (1%)	22	17
All	All	526/530 (99%)	494 (94%)	29 (6%)	3 (1%)	28	24

All (3) Ramachandran outliers are listed below:

Mol	Chain	Res	Type
1	B	94	TYR
1	B	258	ILE
1	A	93	VAL

5.3.2 Protein sidechains ⓘ

In the following table, the Percentiles column shows the percent sidechain outliers of the chain as a percentile score with respect to all X-ray entries followed by that with respect to entries of similar resolution.

The Analysed column shows the number of residues for which the sidechain conformation was analysed, and the total number of residues.

Mol	Chain	Analysed	Rotameric	Outliers	Percentiles	
1	A	233/233 (100%)	218 (94%)	15 (6%)	20	17
1	B	233/233 (100%)	206 (88%)	27 (12%)	6	3
All	All	466/466 (100%)	424 (91%)	42 (9%)	11	7

All (42) residues with a non-rotameric sidechain are listed below:

Mol	Chain	Res	Type
1	A	7	LEU
1	A	59	LEU
1	A	115	VAL
1	A	120	LYS
1	A	134	ASN
1	A	138	LEU
1	A	166	ARG
1	A	176	PHE
1	A	178	ILE
1	A	208	LEU
1	A	215	GLN
1	A	225	ARG
1	A	230	LEU
1	A	245	GLU
1	A	249	ILE
1	B	1	MET
1	B	2	LYS
1	B	18	LYS
1	B	20	ASP
1	B	26	THR
1	B	38	LEU

Continued on next page...

Continued from previous page...

Mol	Chain	Res	Type
1	B	51	HIS
1	B	53	ARG
1	B	56	ILE
1	B	64	GLN
1	B	78	THR
1	B	81	ASP
1	B	96	LYS
1	B	130	VAL
1	B	134	ASN
1	B	140	LYS
1	B	163	LEU
1	B	166	ARG
1	B	183	LEU
1	B	215	GLN
1	B	222	ARG
1	B	226	PRO
1	B	227	LEU
1	B	239	ILE
1	B	241	ASP
1	B	243	ARG
1	B	259	LYS

Some sidechains can be flipped to improve hydrogen bonding and reduce clashes. All (16) such sidechains are listed below:

Mol	Chain	Res	Type
1	A	51	HIS
1	A	97	GLN
1	A	118	GLN
1	A	134	ASN
1	A	151	GLN
1	A	162	GLN
1	A	215	GLN
1	A	217	HIS
1	B	33	GLN
1	B	39	GLN
1	B	134	ASN
1	B	151	GLN
1	B	162	GLN
1	B	186	HIS
1	B	215	GLN
1	B	217	HIS

5.3.3 RNA ⓘ

There are no RNA molecules in this entry.

5.4 Non-standard residues in protein, DNA, RNA chains ⓘ

There are no non-standard protein/DNA/RNA residues in this entry.

5.5 Carbohydrates ⓘ

There are no carbohydrates in this entry.

5.6 Ligand geometry ⓘ

6 ligands are modelled in this entry.

In the following table, the Counts columns list the number of bonds (or angles) for which Mogul statistics could be retrieved, the number of bonds (or angles) that are observed in the model and the number of bonds (or angles) that are defined in the chemical component dictionary. The Link column lists molecule types, if any, to which the group is linked. The Z score for a bond length (or angle) is the number of standard deviations the observed value is removed from the expected value. A bond length (or angle) with $|Z| > 2$ is considered an outlier worth inspection. RMSZ is the root-mean-square of all Z scores of the bond lengths (or angles).

Mol	Type	Chain	Res	Link	Bond lengths			Bond angles		
					Counts	RMSZ	# $ Z > 2$	Counts	RMSZ	# $ Z > 2$
2	PO4	A	530	-	4,4,4	3.14	1 (25%)	6,6,6	1.73	1 (16%)
3	DDU	A	532	-	12,16,16	1.66	5 (41%)	13,23,23	4.13	3 (23%)
4	CB3	A	534	-	30,37,37	1.66	4 (13%)	39,51,51	2.28	7 (17%)
2	PO4	B	531	-	4,4,4	2.55	1 (25%)	6,6,6	1.99	3 (50%)
3	DDU	B	533	-	12,16,16	2.01	4 (33%)	13,23,23	4.40	3 (23%)
4	CB3	B	535	-	30,37,37	1.73	4 (13%)	39,51,51	2.25	9 (23%)

In the following table, the Chirals column lists the number of chiral outliers, the number of chiral centers analysed, the number of these observed in the model and the number defined in the chemical component dictionary. Similar counts are reported in the Torsion and Rings columns. '-' means no outliers of that kind were identified.

Mol	Type	Chain	Res	Link	Chirals	Torsions	Rings
2	PO4	A	530	-	-	0/0/0/0	0/0/0/0
3	DDU	A	532	-	-	0/0/16/16	0/2/2/2
4	CB3	A	534	-	-	0/21/28/28	0/3/3/3

Continued on next page...

Continued from previous page...

Mol	Type	Chain	Res	Link	Chirals	Torsions	Rings
2	PO4	B	531	-	-	0/0/0/0	0/0/0/0
3	DDU	B	533	-	-	0/0/16/16	0/2/2/2
4	CB3	B	535	-	-	0/21/28/28	0/3/3/3

All (19) bond length outliers are listed below:

Mol	Chain	Res	Type	Atoms	Z	Observed(Å)	Ideal(Å)
4	B	535	CB3	C11-C	-3.05	1.43	1.50
3	B	533	DDU	C6-N1	-2.91	1.31	1.35
3	A	532	DDU	C6-N1	-2.04	1.33	1.35
3	A	532	DDU	C5'-C4'	2.04	1.56	1.51
4	A	534	CB3	C9-N10	2.12	1.49	1.46
4	B	535	CB3	C-N	2.18	1.39	1.34
3	A	532	DDU	O4'-C4'	2.27	1.49	1.44
3	B	533	DDU	O4'-C4'	2.38	1.49	1.44
4	A	534	CB3	C8-C7	2.39	1.41	1.36
3	A	532	DDU	O4'-C1'	2.51	1.48	1.42
3	A	532	DDU	C4-N3	3.31	1.39	1.33
3	B	533	DDU	C4-N3	3.53	1.39	1.33
2	B	531	PO4	P-O1	4.18	1.59	1.50
4	A	534	CB3	CA-N	4.29	1.52	1.46
3	B	533	DDU	O4'-C1'	4.29	1.52	1.42
4	B	535	CB3	CA-N	4.50	1.53	1.46
4	A	534	CB3	O4-C4	5.08	1.37	1.24
4	B	535	CB3	O4-C4	5.37	1.38	1.24
2	A	530	PO4	P-O1	5.45	1.62	1.50

All (26) bond angle outliers are listed below:

Mol	Chain	Res	Type	Atoms	Z	Observed(°)	Ideal(°)
4	A	534	CB3	C4A-C8A-N1	-7.49	119.40	123.67
4	B	535	CB3	C4A-C4-N3	-6.92	119.57	124.45
4	A	534	CB3	C4A-C4-N3	-6.80	119.66	124.45
4	B	535	CB3	C4A-C8A-N1	-6.53	119.95	123.67
4	B	535	CB3	N1-C2-N3	-4.89	120.32	127.46
4	A	534	CB3	N1-C2-N3	-4.72	120.57	127.46
4	A	534	CB3	CP1-CP2-CP3	-4.56	171.93	177.74
4	B	535	CB3	CP1-CP2-CP3	-3.99	172.66	177.74
3	B	533	DDU	C5-C4-N3	-3.95	113.69	123.12
4	B	535	CB3	CA-N-C	-3.59	117.22	122.15
3	A	532	DDU	C5-C4-N3	-3.53	114.68	123.12
4	B	535	CB3	CB-CA-CT	-2.70	108.36	112.28

Continued on next page...

Continued from previous page...

Mol	Chain	Res	Type	Atoms	Z	Observed(°)	Ideal(°)
2	B	531	PO4	O4-P-O1	-2.40	100.74	110.97
4	B	535	CB3	C9-C6-C7	-2.17	116.65	120.78
4	A	534	CB3	CB-CA-CT	-2.03	109.34	112.28
2	B	531	PO4	O4-P-O2	2.01	115.30	107.90
2	B	531	PO4	O3-P-O2	2.02	115.31	107.90
4	A	534	CB3	C9-N10-C14	2.10	124.73	120.89
4	B	535	CB3	C16-C11-C12	2.11	121.50	118.58
2	A	530	PO4	O3-P-O2	2.14	115.76	107.90
4	A	534	CB3	C4-N3-C2	3.63	121.28	116.06
4	B	535	CB3	C4-N3-C2	3.85	121.60	116.06
3	A	532	DDU	O4'-C1'-N1	5.07	116.33	107.78
3	B	533	DDU	O4'-C1'-N1	8.18	121.56	107.78
3	B	533	DDU	C4-N3-C2	12.75	125.09	114.13
3	A	532	DDU	C4-N3-C2	13.04	125.33	114.13

There are no chirality outliers.

There are no torsion outliers.

There are no ring outliers.

6 monomers are involved in 11 short contacts:

Mol	Chain	Res	Type	Clashes	Symm-Clashes
2	A	530	PO4	1	0
3	A	532	DDU	2	0
4	A	534	CB3	2	0
2	B	531	PO4	1	0
3	B	533	DDU	3	0
4	B	535	CB3	4	0

5.7 Other polymers [i](#)

There are no such residues in this entry.

5.8 Polymer linkage issues [i](#)

There are no chain breaks in this entry.

6 Fit of model and data

6.1 Protein, DNA and RNA chains

EDS was not executed - this section is therefore empty.

6.2 Non-standard residues in protein, DNA, RNA chains

EDS was not executed - this section is therefore empty.

6.3 Carbohydrates

EDS was not executed - this section is therefore empty.

6.4 Ligands

EDS was not executed - this section is therefore empty.

6.5 Other polymers

EDS was not executed - this section is therefore empty.