



wwPDB X-ray Structure Validation Summary Report ⓘ

Feb 15, 2017 – 04:53 am GMT

PDB ID : 2DHH
Title : Crystal structure of a multidrug transporter reveal a functionally rotating mechanism
Authors : Murakami, S.; Nakashima, R.; Yamashita, E.; Matsumoto, T.
Deposited on : 2006-03-23
Resolution : 2.80 Å(reported)

This is a wwPDB X-ray Structure Validation Summary Report for a publicly released PDB entry.

We welcome your comments at validation@mail.wwpdb.org

A user guide is available at

<http://wwpdb.org/validation/2016/XrayValidationReportHelp>

with specific help available everywhere you see the ⓘ symbol.

The following versions of software and data (see [references ⓘ](#)) were used in the production of this report:

MolProbity : 4.02b-467
Xtriage (Phenix) : 1.9-1692
EDS : trunk28620
Percentile statistics : 20161228.v01 (using entries in the PDB archive December 28th 2016)
Refmac : 5.8.0135
CCP4 : 6.5.0
Ideal geometry (proteins) : Engh & Huber (2001)
Ideal geometry (DNA, RNA) : Parkinson et al. (1996)
Validation Pipeline (wwPDB-VP) : recalc28949

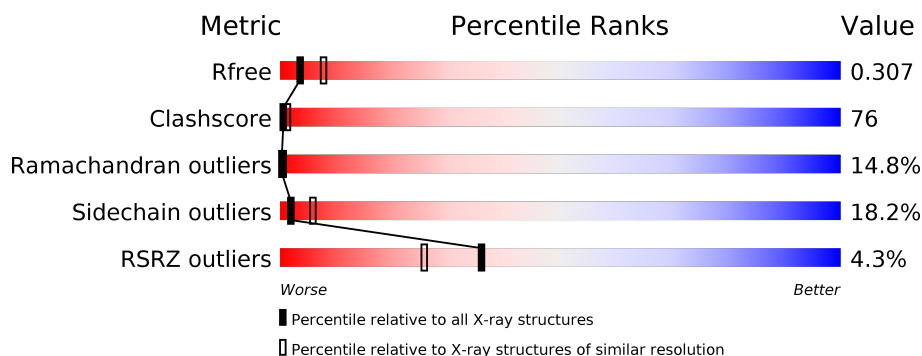
1 Overall quality at a glance

The following experimental techniques were used to determine the structure:

X-RAY DIFFRACTION

The reported resolution of this entry is 2.80 Å.

Percentile scores (ranging between 0-100) for global validation metrics of the entry are shown in the following graphic. The table shows the number of entries on which the scores are based.



Metric	Whole archive (#Entries)	Similar resolution (#Entries, resolution range(Å))
R_{free}	100719	2583 (2.80-2.80)
Clashscore	112137	3033 (2.80-2.80)
Ramachandran outliers	110173	2983 (2.80-2.80)
Sidechain outliers	110143	2985 (2.80-2.80)
RSRZ outliers	101464	2610 (2.80-2.80)

The table below summarises the geometric issues observed across the polymeric chains and their fit to the electron density. The red, orange, yellow and green segments on the lower bar indicate the fraction of residues that contain outliers for ≥ 3 , 2, 1 and 0 types of geometric quality criteria. A grey segment represents the fraction of residues that are not modelled. The numeric value for each fraction is indicated below the corresponding segment, with a dot representing fractions $\leq 5\%$. The upper red bar (where present) indicates the fraction of residues that have poor fit to the electron density. The numeric value is given above the bar.

Mol	Chain	Length	Quality of chain
1	A	1053	<div> <div>4%</div> <div>23% 49% 20% 5% .</div> </div>
1	B	1053	<div> <div>4%</div> <div>19% 55% 21% . .</div> </div>
1	C	1053	<div> <div>4%</div> <div>18% 53% 22% 5% .</div> </div>

2 Entry composition

There are 2 unique types of molecules in this entry. The entry contains 23378 atoms, of which 0 are hydrogens and 0 are deuteriums.

In the tables below, the ZeroOcc column contains the number of atoms modelled with zero occupancy, the AltConf column contains the number of residues with at least one atom in alternate conformation and the Trace column contains the number of residues modelled with at most 2 atoms.

- Molecule 1 is a protein called ACRB.

Mol	Chain	Residues	Atoms					ZeroOcc	AltConf	Trace
1	A	1022	Total	C	N	O	S	0	0	0
			7774	5003	1283	1444	44			
1	B	1022	Total	C	N	O	S	0	0	0
			7774	5003	1283	1444	44			
1	C	1022	Total	C	N	O	S	0	0	0
			7774	5003	1283	1444	44			

There are 12 discrepancies between the modelled and reference sequences:

Chain	Residue	Modelled	Actual	Comment	Reference
A	1050	HIS	-	EXPRESSION TAG	UNP P31224
A	1051	HIS	-	EXPRESSION TAG	UNP P31224
A	1052	HIS	-	EXPRESSION TAG	UNP P31224
A	1053	HIS	-	EXPRESSION TAG	UNP P31224
B	1050	HIS	-	EXPRESSION TAG	UNP P31224
B	1051	HIS	-	EXPRESSION TAG	UNP P31224
B	1052	HIS	-	EXPRESSION TAG	UNP P31224
B	1053	HIS	-	EXPRESSION TAG	UNP P31224
C	1050	HIS	-	EXPRESSION TAG	UNP P31224
C	1051	HIS	-	EXPRESSION TAG	UNP P31224
C	1052	HIS	-	EXPRESSION TAG	UNP P31224
C	1053	HIS	-	EXPRESSION TAG	UNP P31224

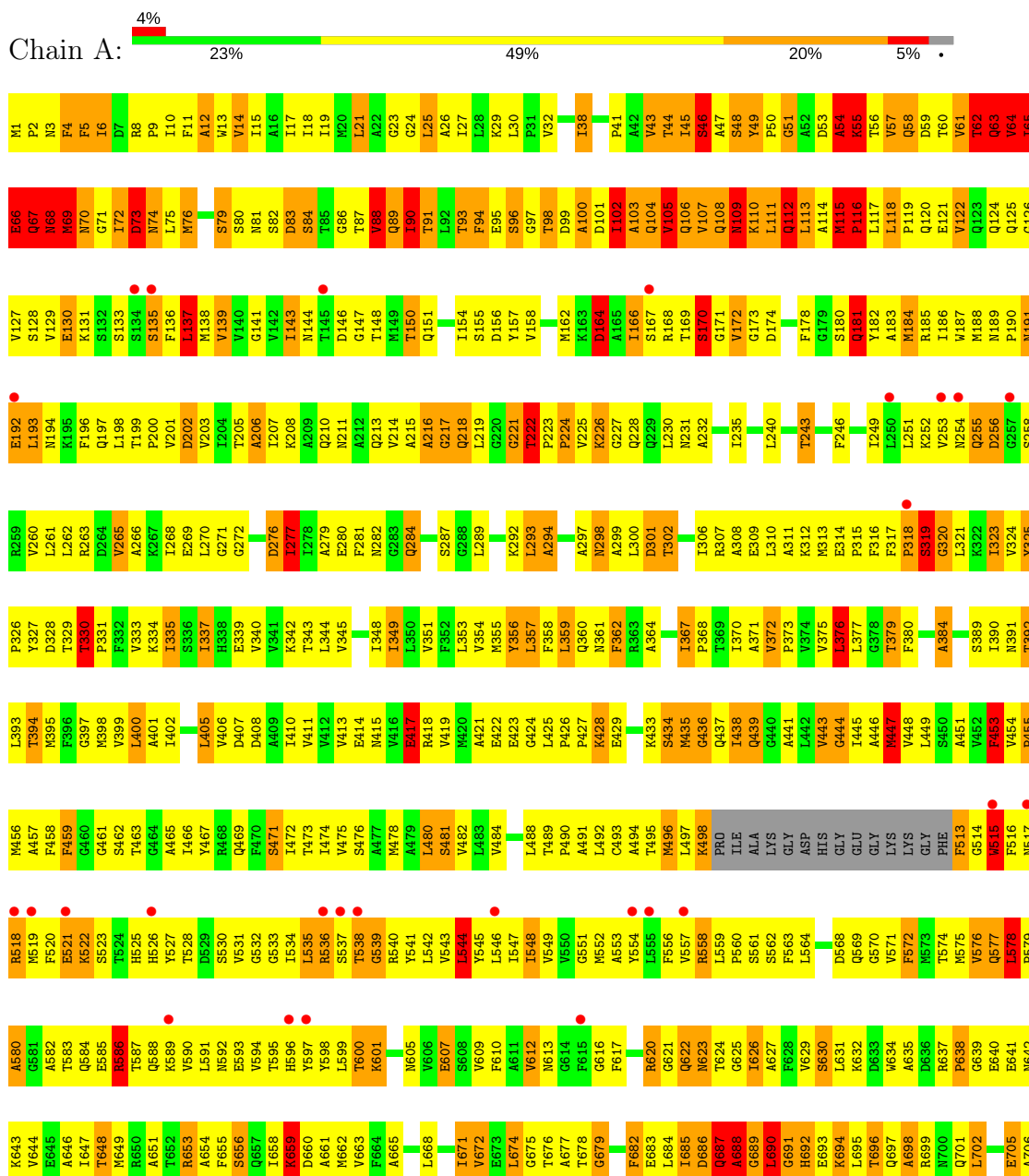
- Molecule 2 is water.

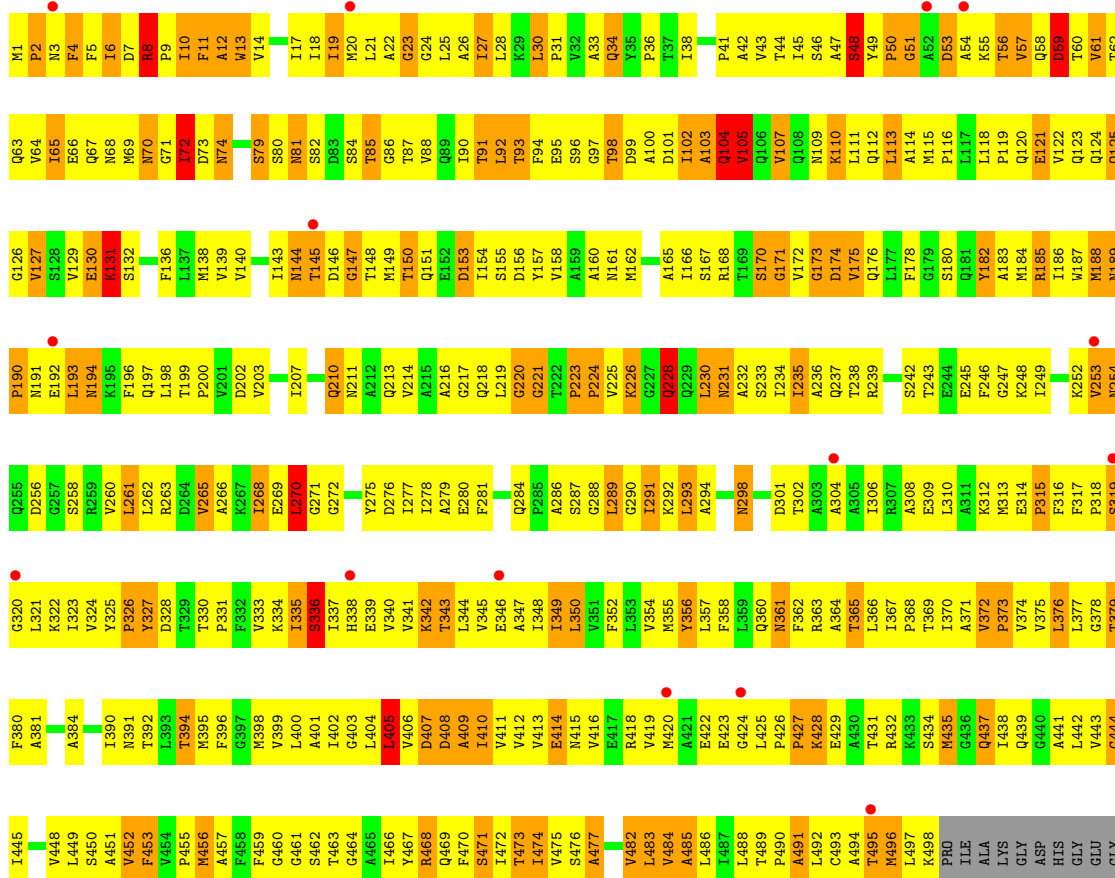
Mol	Chain	Residues	Atoms		ZeroOcc	AltConf
2	A	22	Total	O	0	0
			22	22		
2	B	8	Total	O	0	0
			8	8		
2	C	26	Total	O	0	0
			26	26		

3 Residue-property plots

These plots are drawn for all protein, RNA and DNA chains in the entry. The first graphic for a chain summarises the proportions of the various outlier classes displayed in the second graphic. The second graphic shows the sequence view annotated by issues in geometry and electron density. Residues are color-coded according to the number of geometric quality criteria for which they contain at least one outlier: green = 0, yellow = 1, orange = 2 and red = 3 or more. A red dot above a residue indicates a poor fit to the electron density ($RSRZ > 2$). Stretches of 2 or more consecutive residues without any outlier are shown as a green connector. Residues present in the sample, but not in the model, are shown in grey.

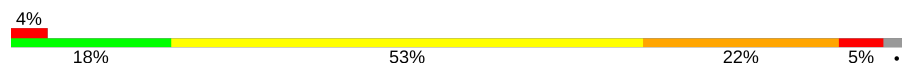
• Molecule 1: ACRB







Chain C:





4 Data and refinement statistics

Property	Value	Source
Space group	C 1 2 1	Depositor
Cell constants a, b, c, α , β , γ	225.87Å 134.42Å 163.19Å 90.00° 97.71° 90.00°	Depositor
Resolution (Å)	10.00 – 2.80 10.00 – 2.80	Depositor EDS
% Data completeness (in resolution range)	99.0 (10.00-2.80) 99.0 (10.00-2.80)	Depositor EDS
R_{merge}	0.08	Depositor
R_{sym}	(Not available)	Depositor
$\langle I/\sigma(I) \rangle$ ¹	2.40 (at 2.80Å)	Xtriage
Refinement program	REFMAC 5.2.0005	Depositor
R, R_{free}	0.268 , 0.307 0.262 , 0.307	Depositor DCC
R_{free} test set	5752 reflections (5.26%)	DCC
Wilson B-factor (Å ²)	73.4	Xtriage
Anisotropy	0.444	Xtriage
Bulk solvent k_{sol} (e/Å ³), B_{sol} (Å ²)	0.30 , 104.1	EDS
L-test for twinning ²	$\langle L \rangle = 0.46$, $\langle L^2 \rangle = 0.29$	Xtriage
Estimated twinning fraction	No twinning to report.	Xtriage
F_o, F_c correlation	0.92	EDS
Total number of atoms	23378	wwPDB-VP
Average B, all atoms (Å ²)	93.0	wwPDB-VP

Xtriage's analysis on translational NCS is as follows: *The largest off-origin peak in the Patterson function is 2.99% of the height of the origin peak. No significant pseudotranslation is detected.*

¹Intensities estimated from amplitudes.

²Theoretical values of $\langle |L| \rangle$, $\langle L^2 \rangle$ for acentric reflections are 0.5, 0.333 respectively for untwinned datasets, and 0.375, 0.2 for perfectly twinned datasets.

5 Model quality

5.1 Standard geometry

The Z score for a bond length (or angle) is the number of standard deviations the observed value is removed from the expected value. A bond length (or angle) with $|Z| > 5$ is considered an outlier worth inspection. RMSZ is the root-mean-square of all Z scores of the bond lengths (or angles).

Mol	Chain	Bond lengths		Bond angles	
		RMSZ	$\# Z > 5$	RMSZ	$\# Z > 5$
1	A	1.50	104/7920 (1.3%)	1.28	74/10756 (0.7%)
1	B	1.02	6/7920 (0.1%)	1.05	18/10756 (0.2%)
1	C	1.54	94/7920 (1.2%)	1.33	82/10756 (0.8%)
All	All	1.37	204/23760 (0.9%)	1.23	174/32268 (0.5%)

Chiral center outliers are detected by calculating the chiral volume of a chiral center and verifying if the center is modelled as a planar moiety or with the opposite hand. A planarity outlier is detected by checking planarity of atoms in a peptide group, atoms in a mainchain group or atoms of a sidechain that are expected to be planar.

Mol	Chain	#Chirality outliers	#Planarity outliers
1	A	0	4
1	B	0	2
1	C	0	6
All	All	0	12

The worst 5 of 204 bond length outliers are listed below:

Mol	Chain	Res	Type	Atoms	Z	Observed(Å)	Ideal(Å)
1	A	67	GLN	CB-CG	23.76	2.16	1.52
1	C	129	VAL	CB-CG2	21.03	1.97	1.52
1	C	167	SER	N-CA	20.35	1.87	1.46
1	A	818	ARG	CG-CD	20.25	2.02	1.51
1	C	166	ILE	CA-CB	20.11	2.01	1.54

The worst 5 of 174 bond angle outliers are listed below:

Mol	Chain	Res	Type	Atoms	Z	Observed(°)	Ideal(°)
1	C	164	ASP	CB-CG-OD1	-17.91	102.18	118.30
1	C	767	ARG	CD-NE-CZ	-16.19	100.94	123.60
1	C	168	ARG	N-CA-C	10.95	140.57	111.00
1	A	818	ARG	NE-CZ-NH2	9.96	125.28	120.30
1	A	111	LEU	CB-CA-C	-9.93	91.33	110.20

There are no chirality outliers.

5 of 12 planarity outliers are listed below:

Mol	Chain	Res	Type	Group
1	A	62	THR	Mainchain
1	A	65	ILE	Mainchain
1	A	66	GLU	Peptide
1	A	818	ARG	Mainchain
1	B	102	ILE	Peptide

5.2 Too-close contacts

In the following table, the Non-H and H(model) columns list the number of non-hydrogen atoms and hydrogen atoms in the chain respectively. The H(added) column lists the number of hydrogen atoms added and optimized by MolProbity. The Clashes column lists the number of clashes within the asymmetric unit, whereas Symm-Clashes lists symmetry related clashes.

Mol	Chain	Non-H	H(model)	H(added)	Clashes	Symm-Clashes
1	A	7774	0	7931	1178	0
1	B	7774	0	7931	1189	0
1	C	7774	0	7931	1304	0
2	A	22	0	0	30	0
2	B	8	0	0	6	0
2	C	26	0	0	35	0
All	All	23378	0	23793	3559	0

The all-atom clashscore is defined as the number of clashes found per 1000 atoms (including hydrogen atoms). The all-atom clashscore for this structure is 76.

The worst 5 of 3559 close contacts within the same asymmetric unit are listed below, sorted by their clash magnitude.

Atom-1	Atom-2	Interatomic distance (Å)	Clash overlap (Å)
1:C:127:VAL:CB	1:C:127:VAL:CA	1.75	1.63
1:C:158:VAL:CG2	1:C:158:VAL:CB	1.77	1.60
1:A:69:MET:CG	1:A:69:MET:CB	1.74	1.60
1:C:58:GLN:CG	1:C:58:GLN:CB	1.74	1.55
1:A:68:ASN:CA	1:A:68:ASN:N	1.70	1.55

There are no symmetry-related clashes.

5.3 Torsion angles

5.3.1 Protein backbone

In the following table, the Percentiles column shows the percent Ramachandran outliers of the chain as a percentile score with respect to all X-ray entries followed by that with respect to entries of similar resolution.

The Analysed column shows the number of residues for which the backbone conformation was analysed, and the total number of residues.

Mol	Chain	Analysed	Favoured	Allowed	Outliers	Percentiles	
1	A	1018/1053 (97%)	621 (61%)	243 (24%)	154 (15%)	0	0
1	B	1018/1053 (97%)	611 (60%)	259 (25%)	148 (14%)	0	1
1	C	1018/1053 (97%)	642 (63%)	225 (22%)	151 (15%)	0	0
All	All	3054/3159 (97%)	1874 (61%)	727 (24%)	453 (15%)	0	0

5 of 453 Ramachandran outliers are listed below:

Mol	Chain	Res	Type
1	A	53	ASP
1	A	63	GLN
1	A	64	VAL
1	A	65	ILE
1	A	67	GLN

5.3.2 Protein sidechains

In the following table, the Percentiles column shows the percent sidechain outliers of the chain as a percentile score with respect to all X-ray entries followed by that with respect to entries of similar resolution.

The Analysed column shows the number of residues for which the sidechain conformation was analysed, and the total number of residues.

Mol	Chain	Analysed	Rotameric	Outliers	Percentiles	
1	A	833/859 (97%)	678 (81%)	155 (19%)	2	5
1	B	833/859 (97%)	688 (83%)	145 (17%)	2	7
1	C	833/859 (97%)	679 (82%)	154 (18%)	2	5
All	All	2499/2577 (97%)	2045 (82%)	454 (18%)	2	6

5 of 454 residues with a non-rotameric sidechain are listed below:

Mol	Chain	Res	Type
1	B	253	VAL
1	B	653	ARG
1	C	762	PHE
1	B	293	LEU
1	B	452	VAL

Some sidechains can be flipped to improve hydrogen bonding and reduce clashes. 5 of 89 such sidechains are listed below:

Mol	Chain	Res	Type
1	B	189	ASN
1	B	437	GLN
1	C	439	GLN
1	B	210	GLN
1	B	231	ASN

5.3.3 RNA [i](#)

There are no RNA molecules in this entry.

5.4 Non-standard residues in protein, DNA, RNA chains [i](#)

There are no non-standard protein/DNA/RNA residues in this entry.

5.5 Carbohydrates [i](#)

There are no carbohydrates in this entry.

5.6 Ligand geometry [i](#)

There are no ligands in this entry.

5.7 Other polymers [i](#)

There are no such residues in this entry.

5.8 Polymer linkage issues [i](#)

There are no chain breaks in this entry.

6 Fit of model and data [i](#)

6.1 Protein, DNA and RNA chains [i](#)

In the following table, the column labelled ‘#RSRZ > 2’ contains the number (and percentage) of RSRZ outliers, followed by percent RSRZ outliers for the chain as percentile scores relative to all X-ray entries and entries of similar resolution. The OWAB column contains the minimum, median, 95th percentile and maximum values of the occupancy-weighted average B-factor per residue. The column labelled ‘Q < 0.9’ lists the number of (and percentage) of residues with an average occupancy less than 0.9.

Mol	Chain	Analysed	<RSRZ>	#RSRZ > 2			OWAB(Å ²)	Q < 0.9
1	A	1022/1053 (97%)	-0.06	41 (4%)	39	28	5, 97, 116, 127	0
1	B	1022/1053 (97%)	0.05	45 (4%)	35	25	49, 102, 116, 127	0
1	C	1022/1053 (97%)	-0.06	45 (4%)	35	25	5, 94, 118, 127	0
All	All	3066/3159 (97%)	-0.02	131 (4%)	36	26	5, 99, 117, 127	0

The worst 5 of 131 RSRZ outliers are listed below:

Mol	Chain	Res	Type	RSRZ
1	B	1034	SER	11.8
1	C	870	GLY	8.2
1	C	513	PHE	6.7
1	C	538	THR	6.3
1	B	529	ASP	5.6

6.2 Non-standard residues in protein, DNA, RNA chains [i](#)

There are no non-standard protein/DNA/RNA residues in this entry.

6.3 Carbohydrates [i](#)

There are no carbohydrates in this entry.

6.4 Ligands [i](#)

There are no ligands in this entry.

6.5 Other polymers [i](#)

There are no such residues in this entry.