



# Full wwPDB X-ray Structure Validation Report ⓘ

Sep 20, 2017 – 12:48 PM EDT

PDB ID : 5DH3  
Title : Crystal structure of MST2 in complex with XMU-MP-1  
Authors : Kong, L.L.; Yun, C.H.  
Deposited on : unknown  
Resolution : 2.47 Å(reported)

This is a Full wwPDB X-ray Structure Validation Report for a publicly released PDB entry.

We welcome your comments at [validation@mail.wwpdb.org](mailto:validation@mail.wwpdb.org)

A user guide is available at

<http://wwpdb.org/validation/2016/XrayValidationReportHelp>

with specific help available everywhere you see the ⓘ symbol.

---

The following versions of software and data (see [references ⓘ](#)) were used in the production of this report:

MolProbity : 4.02b-467  
Mogul : 1.7.2 (RC1), CSD as538be (2017)  
Xtriage (Phenix) : 1.9-1692  
EDS : rb-20029824  
Percentile statistics : 20161228.v01 (using entries in the PDB archive December 28th 2016)  
Refmac : 5.8.0135  
CCP4 : 6.5.0  
Ideal geometry (proteins) : Engh & Huber (2001)  
Ideal geometry (DNA, RNA) : Parkinson et al. (1996)  
Validation Pipeline (wwPDB-VP) : rb-20029824

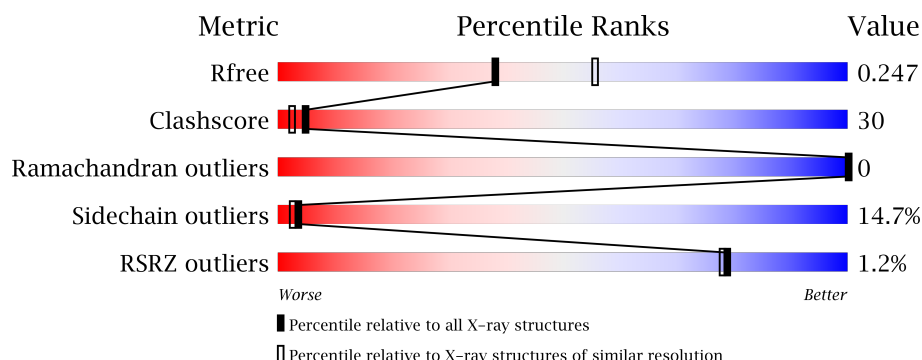
# 1 Overall quality at a glance

The following experimental techniques were used to determine the structure:

## *X-RAY DIFFRACTION*

The reported resolution of this entry is 2.47 Å.

Percentile scores (ranging between 0-100) for global validation metrics of the entry are shown in the following graphic. The table shows the number of entries on which the scores are based.



Metric	Whole archive (#Entries)	Similar resolution (#Entries, resolution range(Å))
$R_{free}$	100719	1119 (2.48-2.44)
Clashscore	112137	1193 (2.48-2.44)
Ramachandran outliers	110173	1185 (2.48-2.44)
Sidechain outliers	110143	1185 (2.48-2.44)
RSRZ outliers	101464	1126 (2.48-2.44)

The table below summarises the geometric issues observed across the polymeric chains and their fit to the electron density. The red, orange, yellow and green segments on the lower bar indicate the fraction of residues that contain outliers for  $\geq 3$ , 2, 1 and 0 types of geometric quality criteria. A grey segment represents the fraction of residues that are not modelled. The numeric value for each fraction is indicated below the corresponding segment, with a dot representing fractions  $\leq 5\%$ . The upper red bar (where present) indicates the fraction of residues that have poor fit to the electron density. The numeric value is given above the bar.

Mol	Chain	Length	Quality of chain
1	A	315	<div> <div>0.1%</div> <div>54%</div> <div>32%</div> <div>5%</div> <div>8%</div> </div>
1	B	315	<div> <div>2%</div> <div>41%</div> <div>41%</div> <div>8%</div> <div>10%</div> </div>

The following table lists non-polymeric compounds, carbohydrate monomers and non-standard residues in protein, DNA, RNA chains that are outliers for geometric or electron-density-fit criteria:

Mol	Type	Chain	Res	Chirality	Geometry	Clashes	Electron density
4	SO4	B	402	-	-	X	-

## 2 Entry composition [i](#)

There are 5 unique types of molecules in this entry. The entry contains 4722 atoms, of which 0 are hydrogens and 0 are deuteriums.

In the tables below, the ZeroOcc column contains the number of atoms modelled with zero occupancy, the AltConf column contains the number of residues with at least one atom in alternate conformation and the Trace column contains the number of residues modelled with at most 2 atoms.

- Molecule 1 is a protein called Serine/threonine-protein kinase 3.

Mol	Chain	Residues	Atoms						ZeroOcc	AltConf	Trace
1	A	289	Total	C	N	O	P	S	0	1	0
			2287	1467	378	427	2	13			
1	B	285	Total	C	N	O	P	S	0	0	0
			2245	1444	369	418	2	12			

There are 32 discrepancies between the modelled and reference sequences:

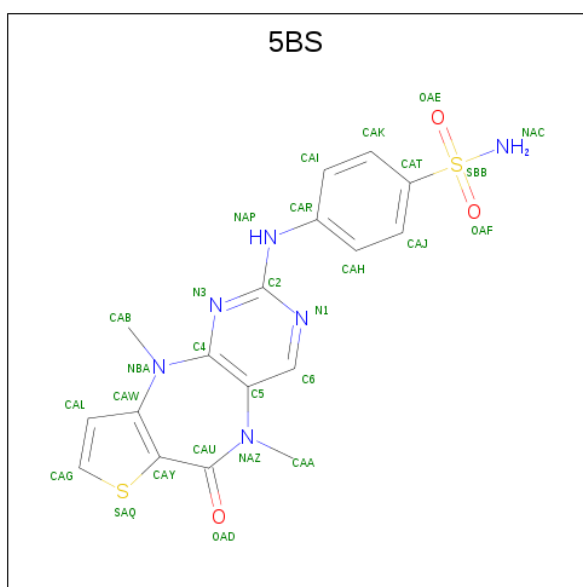
Chain	Residue	Modelled	Actual	Comment	Reference
A	-1	GLY	-	expression tag	UNP Q13188
A	0	SER	-	expression tag	UNP Q13188
A	1	HIS	-	expression tag	UNP Q13188
A	2	MET	-	expression tag	UNP Q13188
A	3	ALA	-	expression tag	UNP Q13188
A	4	SER	-	expression tag	UNP Q13188
A	5	MET	-	expression tag	UNP Q13188
A	6	THR	-	expression tag	UNP Q13188
A	7	GLY	-	expression tag	UNP Q13188
A	8	GLY	-	expression tag	UNP Q13188
A	9	GLN	-	expression tag	UNP Q13188
A	10	GLN	-	expression tag	UNP Q13188
A	11	MET	-	expression tag	UNP Q13188
A	12	GLY	-	expression tag	UNP Q13188
A	13	ARG	-	expression tag	UNP Q13188
A	14	GLY	-	expression tag	UNP Q13188
B	-1	GLY	-	expression tag	UNP Q13188
B	0	SER	-	expression tag	UNP Q13188
B	1	HIS	-	expression tag	UNP Q13188
B	2	MET	-	expression tag	UNP Q13188
B	3	ALA	-	expression tag	UNP Q13188
B	4	SER	-	expression tag	UNP Q13188
B	5	MET	-	expression tag	UNP Q13188
B	6	THR	-	expression tag	UNP Q13188
B	7	GLY	-	expression tag	UNP Q13188

*Continued on next page...*

Continued from previous page...

Chain	Residue	Modelled	Actual	Comment	Reference
B	8	GLY	-	expression tag	UNP Q13188
B	9	GLN	-	expression tag	UNP Q13188
B	10	GLN	-	expression tag	UNP Q13188
B	11	MET	-	expression tag	UNP Q13188
B	12	GLY	-	expression tag	UNP Q13188
B	13	ARG	-	expression tag	UNP Q13188
B	14	GLY	-	expression tag	UNP Q13188

- Molecule 2 is 4-[(5,10-dimethyl-6-oxo-6,10-dihydro-5H-pyrimido[5,4-b]thieno[3,2-e][1,4]diazepin-2-yl)amino]benzenesulfonamide (three-letter code: 5BS) (formula: C<sub>17</sub>H<sub>16</sub>N<sub>6</sub>O<sub>3</sub>S<sub>2</sub>).



Mol	Chain	Residues	Atoms					ZeroOcc	AltConf
2	A	1	Total	C	N	O	S	0	0
			28	17	6	3	2		
2	B	1	Total	C	N	O	S	0	0
			28	17	6	3	2		

- Molecule 3 is CHLORIDE ION (three-letter code: CL) (formula: Cl).

Mol	Chain	Residues	Atoms		ZeroOcc	AltConf
3	A	1	Total	Cl	0	0
			1	1		

- Molecule 4 is SULFATE ION (three-letter code: SO4) (formula: O<sub>4</sub>S).



Mol	Chain	Residues	Atoms			ZeroOcc	AltConf
4	B	1	Total	O	S	0	0
			5	4	1		

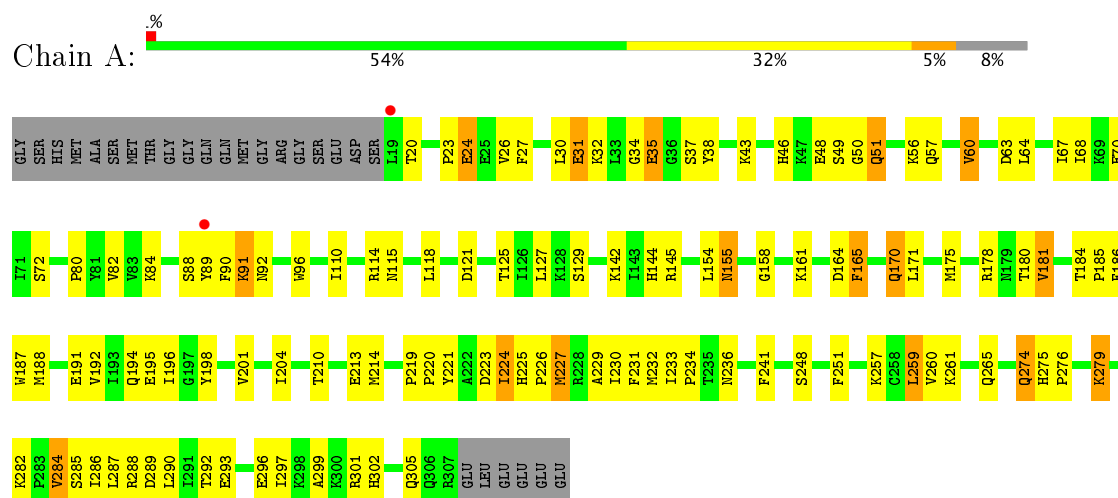
- Molecule 5 is water.

Mol	Chain	Residues	Atoms		ZeroOcc	AltConf
5	A	71	Total	O	0	0
			71	71		
5	B	57	Total	O	0	0
			57	57		

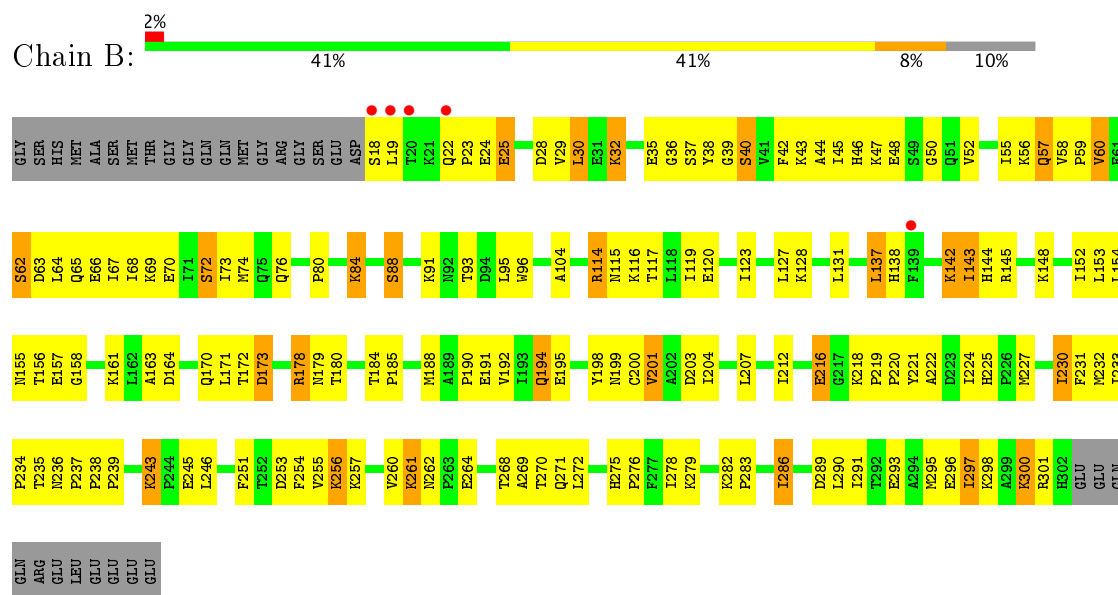
### 3 Residue-property plots

These plots are drawn for all protein, RNA and DNA chains in the entry. The first graphic for a chain summarises the proportions of the various outlier classes displayed in the second graphic. The second graphic shows the sequence view annotated by issues in geometry and electron density. Residues are color-coded according to the number of geometric quality criteria for which they contain at least one outlier: green = 0, yellow = 1, orange = 2 and red = 3 or more. A red dot above a residue indicates a poor fit to the electron density ( $RSRZ > 2$ ). Stretches of 2 or more consecutive residues without any outlier are shown as a green connector. Residues present in the sample, but not in the model, are shown in grey.

#### • Molecule 1: Serine/threonine-protein kinase 3



#### • Molecule 1: Serine/threonine-protein kinase 3



## 4 Data and refinement statistics

Property	Value	Source
Space group	C 2 2 21	Depositor
Cell constants a, b, c, $\alpha$ , $\beta$ , $\gamma$	89.87Å 98.46Å 166.77Å 90.00° 90.00° 90.00°	Depositor
Resolution (Å)	47.22 – 2.47 47.22 – 2.47	Depositor EDS
% Data completeness (in resolution range)	98.7 (47.22-2.47) 99.0 (47.22-2.47)	Depositor EDS
$R_{merge}$	0.06	Depositor
$R_{sym}$	(Not available)	Depositor
$\langle I/\sigma(I) \rangle$ <sup>1</sup>	2.73 (at 2.48Å)	Xtriage
Refinement program	PHENIX 1.8.4_1496	Depositor
R, $R_{free}$	0.211 , 0.247 0.211 , 0.247	Depositor DCC
$R_{free}$ test set	1339 reflections (5.03%)	DCC
Wilson B-factor (Å <sup>2</sup> )	45.5	Xtriage
Anisotropy	1.304	Xtriage
Bulk solvent $k_{sol}$ (e/Å <sup>3</sup> ), $B_{sol}$ (Å <sup>2</sup> )	0.30 , 54.2	EDS
L-test for twinning <sup>2</sup>	$\langle  L  \rangle = 0.50$ , $\langle L^2 \rangle = 0.33$	Xtriage
Estimated twinning fraction	No twinning to report.	Xtriage
$F_o, F_c$ correlation	0.95	EDS
Total number of atoms	4722	wwPDB-VP
Average B, all atoms (Å <sup>2</sup> )	65.0	wwPDB-VP

Xtriage's analysis on translational NCS is as follows: *The largest off-origin peak in the Patterson function is 4.17% of the height of the origin peak. No significant pseudotranslation is detected.*

<sup>1</sup>Intensities estimated from amplitudes.

<sup>2</sup>Theoretical values of  $\langle |L| \rangle$ ,  $\langle L^2 \rangle$  for acentric reflections are 0.5, 0.333 respectively for untwinned datasets, and 0.375, 0.2 for perfectly twinned datasets.



## 5 Model quality

### 5.1 Standard geometry

Bond lengths and bond angles in the following residue types are not validated in this section: TPO, CL, SO4, 5BS

The Z score for a bond length (or angle) is the number of standard deviations the observed value is removed from the expected value. A bond length (or angle) with  $|Z| > 5$  is considered an outlier worth inspection. RMSZ is the root-mean-square of all Z scores of the bond lengths (or angles).

Mol	Chain	Bond lengths		Bond angles	
		RMSZ	$\# Z  > 5$	RMSZ	$\# Z  > 5$
1	A	0.46	0/2314	0.51	0/3133
1	B	0.43	0/2271	0.48	0/3073
All	All	0.45	0/4585	0.50	0/6206

There are no bond length outliers.

There are no bond angle outliers.

There are no chirality outliers.

There are no planarity outliers.

### 5.2 Too-close contacts

In the following table, the Non-H and H(model) columns list the number of non-hydrogen atoms and hydrogen atoms in the chain respectively. The H(added) column lists the number of hydrogen atoms added and optimized by MolProbity. The Clashes column lists the number of clashes within the asymmetric unit, whereas Symm-Clashes lists symmetry related clashes.

Mol	Chain	Non-H	H(model)	H(added)	Clashes	Symm-Clashes
1	A	2287	0	2270	132	0
1	B	2245	0	2255	159	0
2	A	28	0	0	1	0
2	B	28	0	0	1	0
3	A	1	0	0	0	0
4	B	5	0	0	3	0
5	A	71	0	0	10	0
5	B	57	0	0	11	0
All	All	4722	0	4525	277	0

The all-atom clashscore is defined as the number of clashes found per 1000 atoms (including hydrogen atoms). The all-atom clashscore for this structure is 30.

All (277) close contacts within the same asymmetric unit are listed below, sorted by their clash magnitude.

Atom-1	Atom-2	Interatomic distance (Å)	Clash overlap (Å)
1:A:23:PRO:HD2	1:A:91:LYS:HZ2	1.21	1.05
1:B:180:TPO:HG21	1:B:180:TPO:O2P	1.57	1.03
1:B:29:VAL:C	1:B:30:LEU:HD23	1.81	1.01
1:B:25:GLU:O	1:B:47:LYS:HD2	1.59	1.01
1:A:180:TPO:O2P	1:A:180:TPO:HG21	1.64	0.95
1:B:190:PRO:O	1:B:194:GLN:HG3	1.69	0.93
1:B:30:LEU:N	1:B:30:LEU:HD23	1.81	0.93
1:A:194:GLN:HB3	1:A:196:ILE:HD12	1.52	0.90
1:B:104:ALA:HB3	1:B:154:LEU:O	1.73	0.88
1:A:142:LYS:HE3	1:A:170:GLN:OE1	1.72	0.87
1:B:236:ASN:HB3	1:B:237:PRO:HD2	1.54	0.87
1:B:254:PHE:CE1	1:B:272:LEU:HD22	2.10	0.86
1:A:68:ILE:HD13	1:B:60:VAL:HG23	1.59	0.84
1:A:60:VAL:CG2	1:B:68:ILE:HG21	2.09	0.82
1:A:23:PRO:HB3	1:A:89[B]:TYR:CE1	2.14	0.82
1:B:72:SER:O	1:B:76:GLN:HG3	1.80	0.81
1:A:225:HIS:ND1	1:A:226:PRO:HD2	1.95	0.81
1:A:51:GLN:HB2	5:A:508:HOH:O	1.81	0.80
1:A:23:PRO:HD2	1:A:91:LYS:NZ	1.98	0.79
1:B:236:ASN:O	1:B:261:LYS:HE2	1.83	0.78
1:B:180:TPO:CG2	1:B:180:TPO:O2P	2.30	0.77
1:B:70:GLU:HB2	5:B:506:HOH:O	1.83	0.77
1:B:268:THR:HB	1:B:271:GLN:HG3	1.64	0.77
1:B:23:PRO:HB2	1:B:91:LYS:HD2	1.68	0.76
1:B:64:LEU:O	1:B:68:ILE:HG12	1.84	0.76
1:B:156:THR:HG23	4:B:402:SO4:O2	1.86	0.76
1:B:74:MET:HE3	5:B:502:HOH:O	1.85	0.75
1:A:289:ASP:O	1:A:293:GLU:HG3	1.87	0.75
1:B:57:GLN:HB2	1:B:96:TRP:CZ3	2.22	0.75
1:A:82:VAL:HG13	1:A:165:PHE:HZ	1.51	0.75
1:B:153:LEU:HG	1:B:163:ALA:HB2	1.68	0.74
1:A:64:LEU:HD12	1:B:64:LEU:HB2	1.69	0.74
1:B:289:ASP:O	1:B:293:GLU:HG3	1.88	0.73
1:B:156:THR:CG2	4:B:402:SO4:O2	2.37	0.72
1:A:293:GLU:O	1:A:297:ILE:HG13	1.89	0.71
1:A:80:PRO:O	1:A:161:LYS:HD3	1.90	0.70
1:B:227:MET:O	1:B:230:ILE:HG22	1.91	0.70
1:B:283:PRO:O	1:B:286:ILE:HG23	1.90	0.70
1:B:58:VAL:HG13	1:B:59:PRO:HD2	1.74	0.70
1:A:30:LEU:HB3	1:A:31:GLU:OE1	1.91	0.70

*Continued on next page...*

*Continued from previous page...*

Atom-1	Atom-2	Interatomic distance (Å)	Clash overlap (Å)
1:B:28:ASP:HB2	1:B:47:LYS:HZ3	1.58	0.68
1:B:84:LYS:HE3	5:B:520:HOH:O	1.93	0.68
1:B:236:ASN:O	1:B:261:LYS:CE	2.41	0.68
1:B:37:SER:O	1:B:38:TYR:HB2	1.93	0.68
2:A:401:5BS:N3	2:A:401:5BS:CAI	2.54	0.68
1:B:220:PRO:O	1:B:221:TYR:HB2	1.93	0.67
1:A:181:VAL:HG22	1:A:181:VAL:O	1.93	0.67
1:A:20:THR:O	1:A:20:THR:HG23	1.94	0.67
1:A:224:ILE:HD11	1:A:229:ALA:HB2	1.76	0.67
1:B:233:ILE:N	1:B:234:PRO:HD2	2.10	0.66
1:A:194:GLN:HB3	1:A:196:ILE:CD1	2.24	0.66
1:A:68:ILE:HD13	1:B:60:VAL:CG2	2.24	0.66
1:B:57:GLN:HB2	1:B:96:TRP:CH2	2.31	0.65
1:A:30:LEU:N	1:A:30:LEU:HD12	2.11	0.65
1:A:110:ILE:CD1	1:A:154:LEU:HD12	2.27	0.64
1:B:43:LYS:NZ	1:B:52:VAL:HG11	2.11	0.64
1:A:301:ARG:CZ	5:A:552:HOH:O	2.45	0.64
1:B:35:GLU:OE2	1:B:40:SER:HB3	1.98	0.63
1:A:142:LYS:CE	1:A:170:GLN:OE1	2.46	0.63
1:A:49:SER:CB	5:A:508:HOH:O	2.45	0.63
1:A:194:GLN:O	1:A:195:GLU:HB2	1.99	0.62
1:B:232:MET:C	1:B:234:PRO:HD2	2.19	0.62
1:B:32:LYS:HG3	1:B:32:LYS:O	1.98	0.62
1:A:82:VAL:HG13	1:A:165:PHE:CZ	2.32	0.62
1:B:233:ILE:N	1:B:234:PRO:CD	2.62	0.62
1:A:233:ILE:N	1:A:234:PRO:HD2	2.14	0.62
1:B:224:ILE:HG22	1:B:225:HIS:N	2.13	0.62
1:A:260:VAL:HG11	1:A:265:GLN:HB2	1.80	0.62
1:B:30:LEU:CD2	1:B:30:LEU:N	2.55	0.62
1:B:254:PHE:HE1	1:B:272:LEU:HD22	1.64	0.61
1:A:68:ILE:CD1	1:B:60:VAL:CG2	2.79	0.61
1:B:172:THR:HG23	1:B:173:ASP:N	2.15	0.61
1:B:262:ASN:OD1	1:B:264:GLU:HB2	2.00	0.61
1:A:63:ASP:O	1:A:67:ILE:HD12	2.02	0.60
1:A:125:THR:HG23	1:A:282:LYS:O	2.01	0.60
1:A:194:GLN:CB	1:A:196:ILE:HD12	2.27	0.60
1:A:26:VAL:HG12	1:A:27:PHE:CD2	2.35	0.60
1:B:73:ILE:HG23	1:B:142:LYS:HD3	1.84	0.60
1:B:56:LYS:HE2	5:B:525:HOH:O	2.02	0.60
2:B:401:5BS:N3	2:B:401:5BS:CAI	2.63	0.59
1:A:305:GLN:CB	5:A:540:HOH:O	2.51	0.59

*Continued on next page...*

*Continued from previous page...*

Atom-1	Atom-2	Interatomic distance (Å)	Clash overlap (Å)
1:A:188:MET:HE1	1:A:230:ILE:HD11	1.83	0.59
1:A:284:VAL:HG23	5:A:541:HOH:O	2.02	0.59
1:A:284:VAL:CG2	5:A:541:HOH:O	2.50	0.59
1:A:225:HIS:ND1	1:A:226:PRO:CD	2.65	0.58
1:B:178:ARG:NH1	5:B:501:HOH:O	2.36	0.58
1:B:43:LYS:HZ1	1:B:52:VAL:HG11	1.68	0.58
1:B:66:GLU:OE1	1:B:69:LYS:HE2	2.03	0.58
1:A:224:ILE:HD11	1:A:229:ALA:CB	2.32	0.58
1:A:30:LEU:HD22	1:A:43:LYS:HD3	1.85	0.58
1:A:110:ILE:HD12	1:A:154:LEU:HD12	1.85	0.58
1:B:172:THR:CG2	1:B:173:ASP:N	2.67	0.58
1:B:173:ASP:CB	5:B:532:HOH:O	2.52	0.58
1:B:199:ASN:OD1	1:B:201:VAL:HG23	2.04	0.58
1:B:24:GLU:CB	1:B:91:LYS:HZ2	2.17	0.58
1:A:220:PRO:O	1:A:221:TYR:HB2	2.04	0.57
1:A:114:ARG:CZ	1:A:290:LEU:HD12	2.35	0.57
1:B:236:ASN:CB	1:B:237:PRO:HD2	2.33	0.57
1:A:224:ILE:HD11	1:A:229:ALA:CA	2.35	0.56
1:A:165:PHE:N	1:A:165:PHE:CD2	2.73	0.56
1:A:121:ASP:OD1	1:A:282:LYS:CE	2.54	0.56
1:A:165:PHE:HD2	1:A:165:PHE:H	1.53	0.56
1:B:243:LYS:HG3	1:B:246:LEU:CD1	2.36	0.56
1:A:191:GLU:HG3	1:A:198:TYR:HB3	1.86	0.56
1:A:231:PHE:O	1:A:231:PHE:CD1	2.59	0.55
1:A:32:LYS:NZ	1:A:35:GLU:OE2	2.36	0.55
1:A:63:ASP:C	1:A:63:ASP:OD1	2.45	0.55
1:B:190:PRO:O	1:B:194:GLN:CG	2.50	0.55
1:B:262:ASN:ND2	1:B:264:GLU:OE2	2.39	0.55
1:B:69:LYS:NZ	5:B:501:HOH:O	2.39	0.55
1:A:142:LYS:HE3	1:A:170:GLN:CD	2.27	0.55
1:B:268:THR:HG22	1:B:269:ALA:N	2.22	0.55
1:A:68:ILE:HD12	1:B:60:VAL:HG22	1.88	0.55
1:B:138:HIS:ND1	1:B:200:CYS:HB3	2.22	0.55
1:B:282:LYS:NZ	5:B:504:HOH:O	2.39	0.55
1:B:227:MET:O	1:B:230:ILE:CG2	2.55	0.55
1:B:253:ASP:O	1:B:257:LYS:HG3	2.07	0.55
1:B:155:ASN:OD1	1:B:157:GLU:N	2.40	0.54
1:A:191:GLU:HG2	1:A:192:VAL:N	2.21	0.54
1:A:225:HIS:CE1	1:A:226:PRO:HD2	2.42	0.54
1:A:35:GLU:OE1	1:A:35:GLU:HA	2.08	0.54
1:A:84:LYS:HE2	5:A:509:HOH:O	2.08	0.54

*Continued on next page...*

*Continued from previous page...*

Atom-1	Atom-2	Interatomic distance (Å)	Clash overlap (Å)
1:B:155:ASN:OD1	1:B:155:ASN:C	2.44	0.54
1:B:192:VAL:HG22	1:B:198:TYR:CD2	2.42	0.54
1:A:292:THR:O	1:A:296:GLU:HG3	2.08	0.54
1:B:30:LEU:HD11	1:B:45:ILE:HD12	1.89	0.54
1:A:178:ARG:NE	1:A:180:TPO:O3P	2.39	0.53
1:A:180:TPO:O2P	1:A:180:TPO:CG2	2.39	0.53
1:A:224:ILE:HD11	1:A:229:ALA:HA	1.90	0.53
1:A:233:ILE:N	1:A:234:PRO:CD	2.70	0.53
1:B:224:ILE:CG2	1:B:225:HIS:N	2.71	0.53
1:B:24:GLU:CB	1:B:91:LYS:NZ	2.71	0.53
1:A:227:MET:O	1:A:230:ILE:HG22	2.07	0.53
1:B:44:ALA:CB	1:B:55:ILE:HD12	2.39	0.53
1:B:236:ASN:HB3	1:B:237:PRO:CD	2.32	0.53
1:A:38:TYR:H	1:A:56:LYS:HE2	1.74	0.52
1:B:143:ILE:HD11	1:B:171:LEU:HD21	1.91	0.52
1:A:23:PRO:HB2	1:A:91:LYS:HD2	1.90	0.52
1:A:178:ARG:NH1	1:A:180:TPO:O3P	2.40	0.52
1:B:180:TPO:O	1:B:198:TYR:HE2	1.93	0.52
1:B:220:PRO:O	1:B:221:TYR:CB	2.55	0.52
1:B:243:LYS:HG3	1:B:246:LEU:HD11	1.92	0.52
1:A:144:HIS:O	1:A:145:ARG:HB2	2.10	0.51
1:B:191:GLU:HG2	1:B:192:VAL:N	2.25	0.51
1:A:181:VAL:O	1:A:181:VAL:CG2	2.59	0.51
1:B:184:THR:O	1:B:188:MET:HG3	2.11	0.51
1:A:68:ILE:CD1	1:B:64:LEU:HD11	2.40	0.51
1:A:121:ASP:OD1	1:A:282:LYS:HE3	2.11	0.51
1:A:46:HIS:O	1:A:50:GLY:N	2.40	0.51
1:A:114:ARG:CZ	1:A:290:LEU:CD1	2.89	0.51
1:B:142:LYS:HE3	1:B:170:GLN:HE21	1.76	0.50
1:B:123:ILE:O	1:B:127:LEU:HG	2.12	0.50
1:B:152:ILE:C	1:B:153:LEU:HD23	2.32	0.50
1:A:274:GLN:O	1:A:279:LYS:HG3	2.12	0.50
1:B:36:GLY:O	1:B:39:GLY:O	2.30	0.50
1:B:57:GLN:HB2	1:B:96:TRP:CE3	2.46	0.50
1:A:127:LEU:CD2	1:A:214:MET:HE2	2.41	0.49
1:A:184:THR:O	1:A:188:MET:HG3	2.12	0.49
1:B:275:HIS:CG	1:B:276:PRO:HD2	2.47	0.49
1:A:192:VAL:HG22	1:A:198:TYR:CE2	2.47	0.49
1:A:125:THR:CG2	1:A:282:LYS:O	2.60	0.49
1:A:57:GLN:HB2	1:A:96:TRP:CZ3	2.47	0.49
1:B:57:GLN:CB	1:B:96:TRP:CZ3	2.95	0.49

*Continued on next page...*

*Continued from previous page...*

Atom-1	Atom-2	Interatomic distance (Å)	Clash overlap (Å)
1:A:127:LEU:HD21	1:A:214:MET:HE2	1.95	0.49
1:A:23:PRO:CD	1:A:91:LYS:HZ2	2.08	0.49
1:A:118:LEU:HA	5:A:505:HOH:O	2.13	0.48
1:B:144:HIS:O	1:B:145:ARG:HB2	2.12	0.48
1:B:221:TYR:HA	1:B:224:ILE:HD12	1.95	0.48
1:B:260:VAL:HG12	1:B:262:ASN:O	2.13	0.48
1:B:212:ILE:HG22	1:B:216:GLU:HG3	1.95	0.48
1:A:68:ILE:HD11	1:B:64:LEU:CD1	2.44	0.48
1:B:158:GLY:HA2	1:B:291:ILE:HD11	1.95	0.48
1:B:225:HIS:HE1	1:B:227:MET:HG3	1.79	0.48
1:A:90:PHE:CE2	1:B:68:ILE:HD12	2.49	0.48
1:A:223:ASP:OD1	1:A:224:ILE:HG23	2.13	0.47
1:A:231:PHE:C	1:A:231:PHE:CD1	2.85	0.47
1:A:186:PHE:HB2	1:A:187:TRP:CE3	2.49	0.47
1:B:76:GLN:NE2	1:B:170:GLN:HE22	2.11	0.47
1:A:114:ARG:NE	1:A:290:LEU:HD12	2.29	0.47
1:B:104:ALA:HB3	1:B:154:LEU:C	2.35	0.47
1:A:232:MET:C	1:A:234:PRO:HD2	2.34	0.47
1:B:22:GLN:HG3	1:B:23:PRO:HD2	1.97	0.47
1:A:114:ARG:HD3	1:A:290:LEU:HD12	1.97	0.47
1:B:236:ASN:CB	1:B:237:PRO:CD	2.93	0.47
1:A:286:ILE:HG13	1:A:287:LEU:N	2.30	0.47
1:B:58:VAL:CG1	1:B:59:PRO:HD2	2.41	0.47
1:A:155:ASN:C	1:A:158:GLY:H	2.19	0.47
1:A:275:HIS:ND1	1:A:276:PRO:N	2.62	0.47
1:A:64:LEU:HD12	1:B:64:LEU:CB	2.42	0.47
1:A:241:PHE:CZ	1:A:251:PHE:CE1	3.03	0.47
1:B:148:LYS:NZ	5:B:511:HOH:O	2.47	0.47
1:B:173:ASP:HB2	5:B:532:HOH:O	2.15	0.47
1:B:171:LEU:HD23	1:B:178:ARG:HD2	1.97	0.46
1:B:143:ILE:HG22	1:B:203:ASP:OD1	2.16	0.46
1:A:223:ASP:OD1	1:A:224:ILE:N	2.48	0.46
1:A:64:LEU:HB2	1:B:64:LEU:HD12	1.98	0.46
1:A:220:PRO:O	1:A:221:TYR:CB	2.62	0.46
1:A:56:LYS:NZ	5:A:510:HOH:O	2.48	0.46
1:B:219:PRO:HG2	1:B:222:ALA:HB2	1.96	0.46
1:B:262:ASN:OD1	1:B:264:GLU:N	2.48	0.46
1:B:268:THR:HG22	1:B:270:THR:H	1.80	0.46
1:B:144:HIS:NE2	1:B:164:ASP:O	2.49	0.46
1:B:28:ASP:HB2	1:B:47:LYS:NZ	2.27	0.46
1:B:59:PRO:HG2	1:B:62:SER:HB3	1.98	0.46

*Continued on next page...*

*Continued from previous page...*

Atom-1	Atom-2	Interatomic distance (Å)	Clash overlap (Å)
1:A:121:ASP:OD1	1:A:282:LYS:NZ	2.48	0.46
1:B:293:GLU:O	1:B:297:ILE:HG13	2.16	0.46
1:B:95:LEU:HD12	1:B:96:TRP:N	2.31	0.45
1:A:213:GLU:HG3	1:A:219:PRO:HD3	1.98	0.45
1:A:91:LYS:HB3	1:A:96:TRP:HE1	1.81	0.45
1:B:30:LEU:HD11	1:B:45:ILE:CD1	2.47	0.45
1:A:60:VAL:HG21	1:B:68:ILE:HG21	1.93	0.45
1:A:155:ASN:O	1:A:158:GLY:N	2.47	0.45
1:A:35:GLU:OE1	1:A:35:GLU:CA	2.64	0.45
1:A:46:HIS:HB3	5:A:508:HOH:O	2.17	0.45
1:B:156:THR:HG23	4:B:402:SO4:S	2.55	0.45
1:B:225:HIS:HE1	1:B:227:MET:CG	2.30	0.45
1:B:256:LYS:HB2	1:B:256:LYS:HE3	1.87	0.45
1:A:68:ILE:CD1	1:B:60:VAL:HG22	2.46	0.45
1:A:68:ILE:HD12	1:B:64:LEU:HD11	1.99	0.45
1:A:194:GLN:O	1:A:195:GLU:CB	2.65	0.45
1:B:137:LEU:HD23	1:B:137:LEU:HA	1.85	0.45
1:B:104:ALA:CB	1:B:154:LEU:O	2.55	0.44
1:A:30:LEU:CD1	1:A:30:LEU:N	2.78	0.44
1:B:300:LYS:HB3	1:B:300:LYS:HE2	1.58	0.44
1:B:231:PHE:O	1:B:234:PRO:HD2	2.17	0.44
1:B:191:GLU:O	1:B:194:GLN:O	2.36	0.44
1:B:76:GLN:HE22	1:B:170:GLN:HE22	1.65	0.44
1:B:32:LYS:CG	1:B:32:LYS:O	2.65	0.44
1:B:155:ASN:OD1	1:B:157:GLU:HB2	2.18	0.44
1:B:243:LYS:HG2	5:B:505:HOH:O	2.18	0.44
1:A:68:ILE:HD11	1:B:64:LEU:HD13	2.00	0.43
1:A:91:LYS:HB3	1:A:96:TRP:NE1	2.32	0.43
1:B:131:LEU:CD1	1:B:278:ILE:HG13	2.48	0.43
1:B:114:ARG:O	1:B:115:ASN:CB	2.66	0.43
1:B:204:ILE:O	1:B:207:LEU:HB3	2.19	0.43
1:B:238:PRO:HA	1:B:239:PRO:HD3	1.78	0.43
1:B:275:HIS:ND1	1:B:276:PRO:N	2.66	0.43
1:B:178:ARG:O	1:B:198:TYR:CD2	2.72	0.43
1:B:46:HIS:O	1:B:50:GLY:N	2.49	0.42
1:A:37:SER:HB3	1:A:164:ASP:OD2	2.19	0.42
1:A:230:ILE:HG23	1:A:231:PHE:N	2.35	0.42
1:A:34:GLY:O	1:A:35:GLU:OE1	2.37	0.42
1:B:80:PRO:O	1:B:161:LYS:NZ	2.40	0.42
1:A:210:THR:O	1:A:214:MET:HG3	2.19	0.42
1:A:91:LYS:O	1:A:92:ASN:HB2	2.19	0.42

*Continued on next page...*

*Continued from previous page...*

Atom-1	Atom-2	Interatomic distance (Å)	Clash overlap (Å)
1:A:170:GLN:HE21	1:A:171:LEU:N	2.18	0.42
1:B:268:THR:CG2	1:B:269:ALA:N	2.82	0.42
1:B:57:GLN:O	1:B:57:GLN:HG2	2.18	0.42
1:B:184:THR:HA	1:B:185:PRO:HD3	1.82	0.42
1:B:63:ASP:OD1	1:B:63:ASP:N	2.49	0.42
1:A:230:ILE:CG2	1:A:231:PHE:N	2.83	0.42
1:B:88:SER:HB3	1:B:95:LEU:HD11	2.00	0.42
1:A:23:PRO:CD	1:A:91:LYS:NZ	2.76	0.42
1:A:185:PRO:HA	1:A:188:MET:HG3	2.00	0.42
1:A:236:ASN:O	1:A:261:LYS:CE	2.67	0.42
1:B:23:PRO:HB2	1:B:91:LYS:CD	2.43	0.42
1:B:156:THR:HA	1:B:295:MET:HE1	2.02	0.41
1:A:24:GLU:H	1:A:91:LYS:HZ3	1.67	0.41
1:B:251:PHE:O	1:B:255:VAL:HG23	2.20	0.41
1:B:32:LYS:HA	1:B:42:PHE:HA	2.01	0.41
1:B:116:LYS:HG3	1:B:117:THR:O	2.19	0.41
1:A:204:ILE:HA	1:A:204:ILE:HD13	1.89	0.41
1:A:259:LEU:HD12	1:A:259:LEU:HA	1.84	0.41
1:B:142:LYS:CE	1:B:170:GLN:HE21	2.34	0.41
1:B:44:ALA:HB2	1:B:55:ILE:HD12	2.03	0.41
1:A:68:ILE:CD1	1:B:64:LEU:CD1	2.99	0.41
1:A:37:SER:HB3	1:A:164:ASP:OD1	2.20	0.40
1:A:224:ILE:CD1	1:A:229:ALA:HB2	2.48	0.40
1:B:43:LYS:HZ1	1:B:52:VAL:CG1	2.32	0.40
1:B:59:PRO:O	1:B:62:SER:HB3	2.21	0.40
1:A:299:ALA:O	1:A:302:HIS:HB3	2.22	0.40
1:B:253:ASP:O	1:B:257:LYS:CG	2.69	0.40
1:B:298:LYS:HA	1:B:298:LYS:HD2	1.93	0.40
1:A:114:ARG:CD	1:A:290:LEU:HD12	2.52	0.40
1:A:114:ARG:O	1:A:115:ASN:HB3	2.21	0.40
1:B:180:TPO:O	1:B:198:TYR:CE2	2.72	0.40
1:B:230:ILE:HG23	1:B:231:PHE:N	2.37	0.40

There are no symmetry-related clashes.

## 5.3 Torsion angles

### 5.3.1 Protein backbone

In the following table, the Percentiles column shows the percent Ramachandran outliers of the chain as a percentile score with respect to all X-ray entries followed by that with respect to entries



of similar resolution.

The Analysed column shows the number of residues for which the backbone conformation was analysed, and the total number of residues.

Mol	Chain	Analysed	Favoured	Allowed	Outliers	Percentiles	
1	A	286/315 (91%)	278 (97%)	8 (3%)	0	100	100
1	B	281/315 (89%)	271 (96%)	10 (4%)	0	100	100
All	All	567/630 (90%)	549 (97%)	18 (3%)	0	100	100

There are no Ramachandran outliers to report.

### 5.3.2 Protein sidechains ⓘ

In the following table, the Percentiles column shows the percent sidechain outliers of the chain as a percentile score with respect to all X-ray entries followed by that with respect to entries of similar resolution.

The Analysed column shows the number of residues for which the sidechain conformation was analysed, and the total number of residues.

Mol	Chain	Analysed	Rotameric	Outliers	Percentiles	
1	A	243/272 (89%)	216 (89%)	27 (11%)	7	7
1	B	241/272 (89%)	197 (82%)	44 (18%)	2	1
All	All	484/544 (89%)	413 (85%)	71 (15%)	3	2

All (71) residues with a non-rotameric sidechain are listed below:

Mol	Chain	Res	Type
1	A	24	GLU
1	A	31	GLU
1	A	35	GLU
1	A	48	GLU
1	A	51	GLN
1	A	60	VAL
1	A	70	GLU
1	A	72	SER
1	A	88	SER
1	A	91	LYS
1	A	129	SER
1	A	155	ASN
1	A	165	PHE
1	A	170	GLN

*Continued on next page...*

*Continued from previous page...*

Mol	Chain	Res	Type
1	A	175	MET
1	A	181	VAL
1	A	201	VAL
1	A	224	ILE
1	A	227	MET
1	A	248	SER
1	A	257	LYS
1	A	259	LEU
1	A	274	GLN
1	A	279	LYS
1	A	284	VAL
1	A	285	SER
1	A	288	ARG
1	B	18	SER
1	B	19	LEU
1	B	25	GLU
1	B	30	LEU
1	B	32	LYS
1	B	40	SER
1	B	48	GLU
1	B	57	GLN
1	B	60	VAL
1	B	62	SER
1	B	65	GLN
1	B	67	ILE
1	B	72	SER
1	B	84	LYS
1	B	88	SER
1	B	93	THR
1	B	114	ARG
1	B	119	ILE
1	B	120	GLU
1	B	128	LYS
1	B	137	LEU
1	B	142	LYS
1	B	143	ILE
1	B	173	ASP
1	B	178	ARG
1	B	179	ASN
1	B	194	GLN
1	B	195	GLU
1	B	201	VAL

*Continued on next page...*

*Continued from previous page...*

Mol	Chain	Res	Type
1	B	216	GLU
1	B	218	LYS
1	B	230	ILE
1	B	235	THR
1	B	243	LYS
1	B	245	GLU
1	B	256	LYS
1	B	261	LYS
1	B	279	LYS
1	B	286	ILE
1	B	290	LEU
1	B	296	GLU
1	B	297	ILE
1	B	300	LYS
1	B	301	ARG

Some sidechains can be flipped to improve hydrogen bonding and reduce clashes. All (2) such sidechains are listed below:

Mol	Chain	Res	Type
1	B	170	GLN
1	B	194	GLN

### 5.3.3 RNA ⓘ

There are no RNA molecules in this entry.

## 5.4 Non-standard residues in protein, DNA, RNA chains ⓘ

4 non-standard protein/DNA/RNA residues are modelled in this entry.

In the following table, the Counts columns list the number of bonds (or angles) for which Mogul statistics could be retrieved, the number of bonds (or angles) that are observed in the model and the number of bonds (or angles) that are defined in the chemical component dictionary. The Link column lists molecule types, if any, to which the group is linked. The Z score for a bond length (or angle) is the number of standard deviations the observed value is removed from the expected value. A bond length (or angle) with  $|Z| > 2$  is considered an outlier worth inspection. RMSZ is the root-mean-square of all Z scores of the bond lengths (or angles).

Mol	Type	Chain	Res	Link	Bond lengths			Bond angles		
					Counts	RMSZ	$\# Z  > 2$	Counts	RMSZ	$\# Z  > 2$
1	TPO	A	174	1	9,10,11	1.35	1 (11%)	10,14,16	1.44	2 (20%)

Mol	Type	Chain	Res	Link	Bond lengths			Bond angles		
					Counts	RMSZ	# Z  > 2	Counts	RMSZ	# Z  > 2
1	TPO	A	180	1	9,10,11	1.30	0	10,14,16	1.40	2 (20%)
1	TPO	B	174	1	9,10,11	1.28	1 (11%)	10,14,16	1.44	1 (10%)
1	TPO	B	180	1	9,10,11	1.25	1 (11%)	10,14,16	1.32	0

In the following table, the Chirals column lists the number of chiral outliers, the number of chiral centers analysed, the number of these observed in the model and the number defined in the chemical component dictionary. Similar counts are reported in the Torsion and Rings columns. '-' means no outliers of that kind were identified.

Mol	Type	Chain	Res	Link	Chirals	Torsions	Rings
1	TPO	A	174	1	-	0/8/11/13	0/0/0/0
1	TPO	A	180	1	-	0/8/11/13	0/0/0/0
1	TPO	B	174	1	-	0/8/11/13	0/0/0/0
1	TPO	B	180	1	-	0/8/11/13	0/0/0/0

All (3) bond length outliers are listed below:

Mol	Chain	Res	Type	Atoms	Z	Observed(Å)	Ideal(Å)
1	A	174	TPO	CA-C	2.14	1.53	1.50
1	B	180	TPO	CA-C	2.14	1.53	1.50
1	B	174	TPO	CA-C	2.30	1.53	1.50

All (5) bond angle outliers are listed below:

Mol	Chain	Res	Type	Atoms	Z	Observed(°)	Ideal(°)
1	A	174	TPO	CG2-CB-CA	-2.44	108.69	113.22
1	B	174	TPO	CG2-CB-CA	-2.23	109.07	113.22
1	A	180	TPO	OG1-P-O1P	-2.11	101.01	109.26
1	A	174	TPO	O-C-CA	-2.01	120.47	125.15
1	A	180	TPO	O3P-P-O2P	2.18	116.41	107.61

There are no chirality outliers.

There are no torsion outliers.

There are no ring outliers.

2 monomers are involved in 8 short contacts:

Mol	Chain	Res	Type	Clashes	Symm-Clashes
1	A	180	TPO	4	0
1	B	180	TPO	4	0

## 5.5 Carbohydrates [i](#)

There are no carbohydrates in this entry.

## 5.6 Ligand geometry [i](#)

Of 4 ligands modelled in this entry, 1 is monoatomic - leaving 3 for Mogul analysis.

In the following table, the Counts columns list the number of bonds (or angles) for which Mogul statistics could be retrieved, the number of bonds (or angles) that are observed in the model and the number of bonds (or angles) that are defined in the chemical component dictionary. The Link column lists molecule types, if any, to which the group is linked. The Z score for a bond length (or angle) is the number of standard deviations the observed value is removed from the expected value. A bond length (or angle) with  $|Z| > 2$  is considered an outlier worth inspection. RMSZ is the root-mean-square of all Z scores of the bond lengths (or angles).

Mol	Type	Chain	Res	Link	Bond lengths			Bond angles		
					Counts	RMSZ	# $ Z  > 2$	Counts	RMSZ	# $ Z  > 2$
2	5BS	A	401	-	22,31,31	1.94	4 (18%)	24,47,47	2.34	7 (29%)
2	5BS	B	401	-	22,31,31	2.02	7 (31%)	24,47,47	2.32	8 (33%)
4	SO4	B	402	-	4,4,4	0.29	0	6,6,6	0.05	0

In the following table, the Chirals column lists the number of chiral outliers, the number of chiral centers analysed, the number of these observed in the model and the number defined in the chemical component dictionary. Similar counts are reported in the Torsion and Rings columns. '-' means no outliers of that kind were identified.

Mol	Type	Chain	Res	Link	Chirals	Torsions	Rings
2	5BS	A	401	-	-	0/10/10/10	0/3/4/4
2	5BS	B	401	-	-	0/10/10/10	0/3/4/4
4	SO4	B	402	-	-	0/0/0/0	0/0/0/0

All (11) bond length outliers are listed below:

Mol	Chain	Res	Type	Atoms	Z	Observed(Å)	Ideal(Å)
2	B	401	5BS	CAR-NAP	-3.63	1.33	1.40
2	A	401	5BS	CAR-NAP	-3.59	1.33	1.40
2	B	401	5BS	CAT-SBB	-2.77	1.72	1.77
2	B	401	5BS	CAG-SAQ	-2.27	1.60	1.71
2	B	401	5BS	CAL-CAW	-2.03	1.34	1.42
2	B	401	5BS	C6-N1	2.38	1.38	1.32
2	A	401	5BS	C6-N1	2.62	1.38	1.32
2	A	401	5BS	OAE-SBB	4.64	1.53	1.43
2	A	401	5BS	OAF-SBB	4.67	1.53	1.43

*Continued on next page...*

*Continued from previous page...*

Mol	Chain	Res	Type	Atoms	Z	Observed(Å)	Ideal(Å)
2	B	401	5BS	OAE-SBB	4.68	1.53	1.43
2	B	401	5BS	OAF-SBB	4.70	1.53	1.43

All (15) bond angle outliers are listed below:

Mol	Chain	Res	Type	Atoms	Z	Observed(°)	Ideal(°)
2	B	401	5BS	N1-C2-N3	-5.93	120.73	126.65
2	A	401	5BS	N1-C2-N3	-5.86	120.81	126.65
2	B	401	5BS	OAF-SBB-OAE	-5.11	109.33	118.70
2	A	401	5BS	OAF-SBB-OAE	-5.02	109.48	118.70
2	A	401	5BS	CAR-NAP-C2	-2.59	122.43	129.17
2	B	401	5BS	CAR-NAP-C2	-2.10	123.72	129.17
2	B	401	5BS	OAE-SBB-CAT	2.04	109.78	107.39
2	A	401	5BS	OAE-SBB-CAT	2.15	109.90	107.39
2	B	401	5BS	NAP-C2-N3	2.25	124.35	116.89
2	B	401	5BS	CAL-CAW-CAY	2.61	112.53	110.62
2	A	401	5BS	C6-N1-C2	3.27	121.21	115.89
2	A	401	5BS	CAL-CAW-CAY	3.60	113.25	110.62
2	B	401	5BS	C6-N1-C2	3.69	121.89	115.89
2	B	401	5BS	C2-N3-C4	4.06	119.75	115.11
2	A	401	5BS	C2-N3-C4	4.31	120.03	115.11

There are no chirality outliers.

There are no torsion outliers.

There are no ring outliers.

3 monomers are involved in 5 short contacts:

Mol	Chain	Res	Type	Clashes	Symm-Clashes
2	A	401	5BS	1	0
2	B	401	5BS	1	0
4	B	402	SO4	3	0

## 5.7 Other polymers [i](#)

There are no such residues in this entry.

## 5.8 Polymer linkage issues [i](#)

There are no chain breaks in this entry.

## 6 Fit of model and data [i](#)

### 6.1 Protein, DNA and RNA chains [i](#)

In the following table, the column labelled ‘#RSRZ> 2’ contains the number (and percentage) of RSRZ outliers, followed by percent RSRZ outliers for the chain as percentile scores relative to all X-ray entries and entries of similar resolution. The OWAB column contains the minimum, median, 95<sup>th</sup> percentile and maximum values of the occupancy-weighted average B-factor per residue. The column labelled ‘Q< 0.9’ lists the number of (and percentage) of residues with an average occupancy less than 0.9.

Mol	Chain	Analysed	<RSRZ>	#RSRZ>2	OWAB(Å <sup>2</sup> )	Q<0.9
1	A	287/315 (91%)	-0.05	2 (0%) 87 89	41, 58, 89, 116	8 (2%)
1	B	283/315 (89%)	0.16	5 (1%) 69 65	41, 67, 101, 117	5 (1%)
All	All	570/630 (90%)	0.05	7 (1%) 79 78	41, 62, 95, 117	13 (2%)

All (7) RSRZ outliers are listed below:

Mol	Chain	Res	Type	RSRZ
1	B	20	THR	6.2
1	B	22	GLN	2.9
1	A	89[A]	TYR	2.4
1	B	19	LEU	2.2
1	B	139	PHE	2.2
1	A	19	LEU	2.1
1	B	18	SER	2.1

### 6.2 Non-standard residues in protein, DNA, RNA chains [i](#)

In the following table, the Atoms column lists the number of modelled atoms in the group and the number defined in the chemical component dictionary. LLDF column lists the quality of electron density of the group with respect to its neighbouring residues in protein, DNA or RNA chains. The B-factors column lists the minimum, median, 95<sup>th</sup> percentile and maximum values of B factors of atoms in the group. The column labelled ‘Q< 0.9’ lists the number of atoms with occupancy less than 0.9.

Mol	Type	Chain	Res	Atoms	RSCC	RSR	LLDF	B-factors(Å <sup>2</sup> )	Q<0.9
1	TPO	B	180	11/12	0.95	0.17	-	62,74,79,85	0
1	TPO	B	174	11/12	0.80	0.18	-	112,119,133,142	6
1	TPO	A	174	11/12	0.95	0.13	-	80,97,108,121	0
1	TPO	A	180	11/12	0.95	0.16	-	49,64,73,83	0

### 6.3 Carbohydrates [i](#)

There are no carbohydrates in this entry.

### 6.4 Ligands [i](#)

In the following table, the Atoms column lists the number of modelled atoms in the group and the number defined in the chemical component dictionary. LLDF column lists the quality of electron density of the group with respect to its neighbouring residues in protein, DNA or RNA chains. The B-factors column lists the minimum, median, 95<sup>th</sup> percentile and maximum values of B factors of atoms in the group. The column labelled 'Q< 0.9' lists the number of atoms with occupancy less than 0.9.

Mol	Type	Chain	Res	Atoms	RSCC	RSR	LLDF	B-factors( $\text{\AA}^2$ )	Q<0.9
2	5BS	B	401	28/28	0.96	0.14	-0.51	43,53,70,75	0
2	5BS	A	401	28/28	0.96	0.12	-0.79	37,52,65,67	0
4	SO4	B	402	5/5	0.92	0.12	-1.59	68,83,97,103	5
3	CL	A	402	1/1	0.92	0.12	-	119,119,119,119	0

### 6.5 Other polymers [i](#)

There are no such residues in this entry.