



wwPDB X-ray Structure Validation Summary Report ⓘ

Feb 15, 2017 – 02:40 am GMT

PDB ID : 5DIS
Title : Crystal structure of a CRM1-RanGTP-SPN1 export complex bound to a 113 amino acid FG-repeat containing fragment of Nup214
Authors : Monecke, T.; Port, S.A.; Dickmanns, A.; Kehlenbach, R.H.; Ficner, R.
Deposited on : 2015-09-01
Resolution : 2.85 Å(reported)

This is a wwPDB X-ray Structure Validation Summary Report for a publicly released PDB entry.

We welcome your comments at validation@mail.wwpdb.org

A user guide is available at

<http://wwpdb.org/validation/2016/XrayValidationReportHelp>

with specific help available everywhere you see the ⓘ symbol.

The following versions of software and data (see [references ⓘ](#)) were used in the production of this report:

MolProbity : 4.02b-467
Mogul : 1.7.2 (RC1), CSD as538be (2017)
Xtriage (Phenix) : 1.9-1692
EDS : trunk28620
Percentile statistics : 20161228.v01 (using entries in the PDB archive December 28th 2016)
Refmac : 5.8.0135
CCP4 : 6.5.0
Ideal geometry (proteins) : Engh & Huber (2001)
Ideal geometry (DNA, RNA) : Parkinson et al. (1996)
Validation Pipeline (wwPDB-VP) : recalc28949

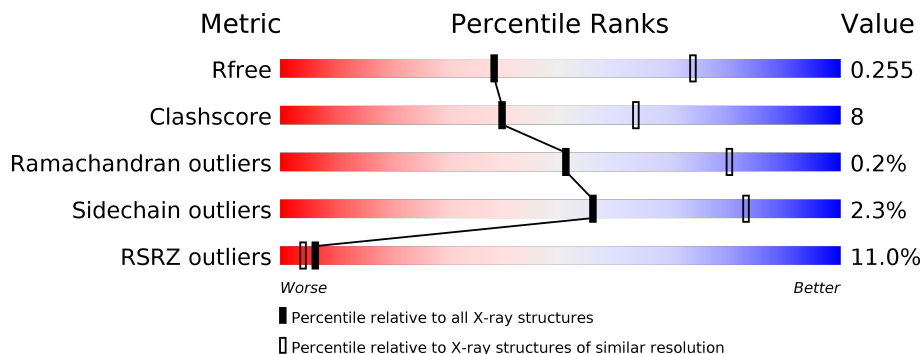
1 Overall quality at a glance

The following experimental techniques were used to determine the structure:

X-RAY DIFFRACTION

The reported resolution of this entry is 2.85 Å.

Percentile scores (ranging between 0-100) for global validation metrics of the entry are shown in the following graphic. The table shows the number of entries on which the scores are based.



Metric	Whole archive (#Entries)	Similar resolution (#Entries, resolution range(Å))
R_{free}	100719	2469 (2.90-2.82)
Clashscore	112137	2749 (2.90-2.82)
Ramachandran outliers	110173	2687 (2.90-2.82)
Sidechain outliers	110143	2690 (2.90-2.82)
RSRZ outliers	101464	2487 (2.90-2.82)

The table below summarises the geometric issues observed across the polymeric chains and their fit to the electron density. The red, orange, yellow and green segments on the lower bar indicate the fraction of residues that contain outliers for ≥ 3 , 2, 1 and 0 types of geometric quality criteria. A grey segment represents the fraction of residues that are not modelled. The numeric value for each fraction is indicated below the corresponding segment, with a dot representing fractions $\leq 5\%$. The upper red bar (where present) indicates the fraction of residues that have poor fit to the electron density. The numeric value is given above the bar.

Mol	Chain	Length	Quality of chain
1	A	1044	<div> <div>79%</div> <div>20%</div> <div>.</div> </div>
2	B	172	<div> <div>85%</div> <div>14%</div> <div>.</div> </div>
3	C	289	<div> <div>3%</div> <div>67%</div> <div>23%</div> <div>9%</div> <div>.</div> </div>
4	D	479	<div> <div>39%</div> <div>63%</div> <div>17%</div> <div>18%</div> <div>.</div> </div>

The following table lists non-polymeric compounds, carbohydrate monomers and non-standard residues in protein, DNA, RNA chains that are outliers for geometric or electron-density-fit crite-

ria:

Mol	Type	Chain	Res	Chirality	Geometry	Clashes	Electron density
5	PRO	A	1101	-	-	-	X
5	PRO	C	301	-	-	-	X

2 Entry composition

There are 9 unique types of molecules in this entry. The entry contains 14991 atoms, of which 0 are hydrogens and 0 are deuteriums.

In the tables below, the ZeroOcc column contains the number of atoms modelled with zero occupancy, the AltConf column contains the number of residues with at least one atom in alternate conformation and the Trace column contains the number of residues modelled with at most 2 atoms.

- Molecule 1 is a protein called Exportin-1.

Mol	Chain	Residues	Atoms					ZeroOcc	AltConf	Trace
1	A	1032	Total	C	N	O	S	0	0	0
			8366	5370	1400	1541	55			

- Molecule 2 is a protein called GTP-binding nuclear protein Ran.

Mol	Chain	Residues	Atoms					ZeroOcc	AltConf	Trace
2	B	172	Total	C	N	O	S	0	0	0
			1398	909	245	239	5			

There is a discrepancy between the modelled and reference sequences:

Chain	Residue	Modelled	Actual	Comment	Reference
B	69	LEU	GLN	engineered mutation	UNP P62826

- Molecule 3 is a protein called Snurportin-1.

Mol	Chain	Residues	Atoms					ZeroOcc	AltConf	Trace
3	C	264	Total	C	N	O	S	0	0	0
			2131	1359	365	393	14			

There are 2 discrepancies between the modelled and reference sequences:

Chain	Residue	Modelled	Actual	Comment	Reference
C	-1	GLY	-	linker	UNP O95149
C	0	SER	-	linker	UNP O95149

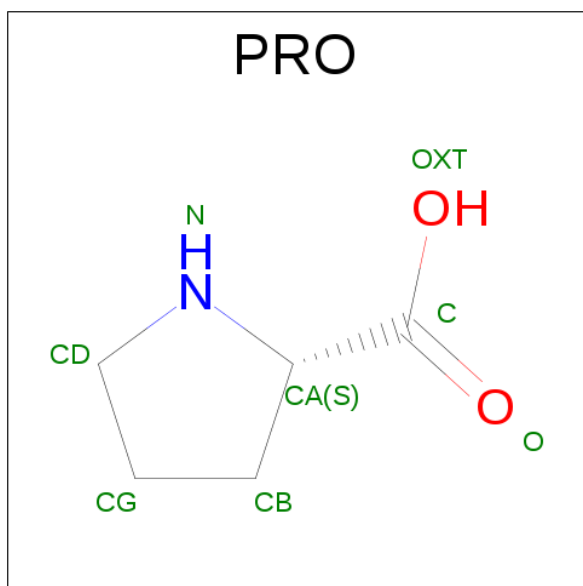
- Molecule 4 is a protein called Maltose-binding periplasmic protein,Nuclear pore complex protein Nup214.

Mol	Chain	Residues	Atoms					ZeroOcc	AltConf	Trace
4	D	395	Total	C	N	O	S	0	0	0
			3012	1941	489	579	3			

There are 11 discrepancies between the modelled and reference sequences:

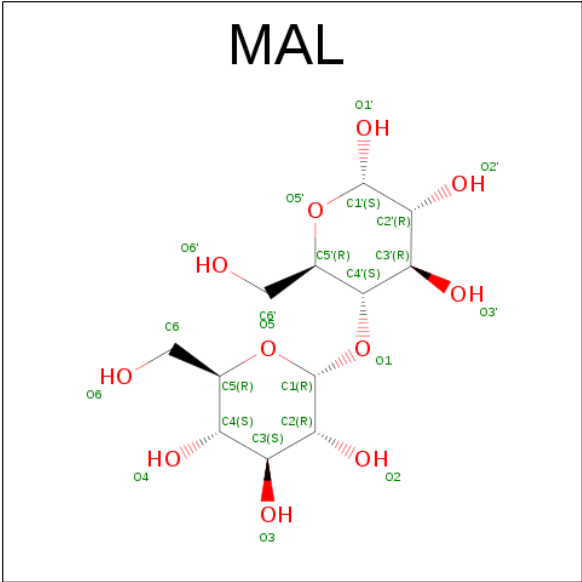
Chain	Residue	Modelled	Actual	Comment	Reference
D	362	ALA	-	linker	UNP P0AEX9
D	363	ALA	-	linker	UNP P0AEX9
D	364	ALA	-	linker	UNP P0AEX9
D	365	GLN	-	linker	UNP P0AEX9
D	366	THR	-	linker	UNP P0AEX9
D	367	ASN	-	linker	UNP P0AEX9
D	368	ALA	-	linker	UNP P0AEX9
D	1912	ALA	-	linker	UNP P0AEX9
D	1913	ALA	-	linker	UNP P0AEX9
D	1914	GLU	-	linker	UNP P0AEX9
D	1915	PHE	-	linker	UNP P0AEX9

- Molecule 5 is PROLINE (three-letter code: PRO) (formula: $C_5H_9NO_2$).



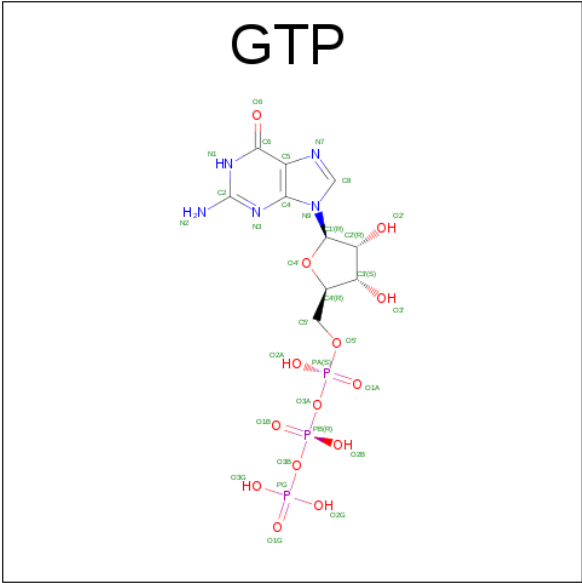
Mol	Chain	Residues	Atoms				ZeroOcc	AltConf
5	A	1	Total	C	N	O	0	0
			8	5	1	2		
5	C	1	Total	C	N	O	0	0
			8	5	1	2		

- Molecule 6 is MALTOSE (three-letter code: MAL) (formula: $C_{12}H_{22}O_{11}$).



Mol	Chain	Residues	Atoms			ZeroOcc	AltConf
6	A	1	Total	C	O	0	0
			23	12	11		

- Molecule 7 is GUANOSINE-5'-TRIPHOSPHATE (three-letter code: GTP) (formula: C₁₀H₁₆N₅O₁₄P₃).



Mol	Chain	Residues	Atoms				ZeroOcc	AltConf
7	B	1	Total	C	N	O	0	0
			32	10	5	14		

- Molecule 8 is MAGNESIUM ION (three-letter code: MG) (formula: Mg).

Mol	Chain	Residues	Atoms		ZeroOcc	AltConf
8	B	1	Total 1	Mg 1	0	0

- Molecule 9 is water.

Mol	Chain	Residues	Atoms		ZeroOcc	AltConf
9	A	3	Total 3	O 3	0	0
9	B	9	Total 9	O 9	0	0

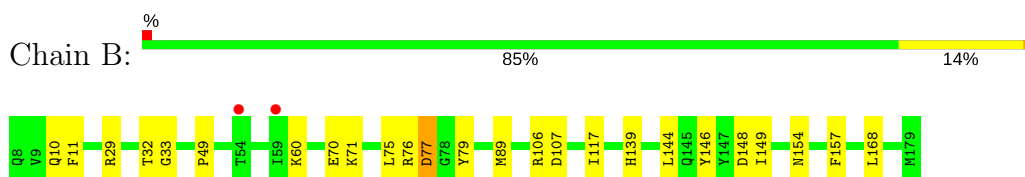
3 Residue-property plots

These plots are drawn for all protein, RNA and DNA chains in the entry. The first graphic for a chain summarises the proportions of the various outlier classes displayed in the second graphic. The second graphic shows the sequence view annotated by issues in geometry and electron density. Residues are color-coded according to the number of geometric quality criteria for which they contain at least one outlier: green = 0, yellow = 1, orange = 2 and red = 3 or more. A red dot above a residue indicates a poor fit to the electron density ($RSRZ > 2$). Stretches of 2 or more consecutive residues without any outlier are shown as a green connector. Residues present in the sample, but not in the model, are shown in grey.

• Molecule 1: Exportin-1

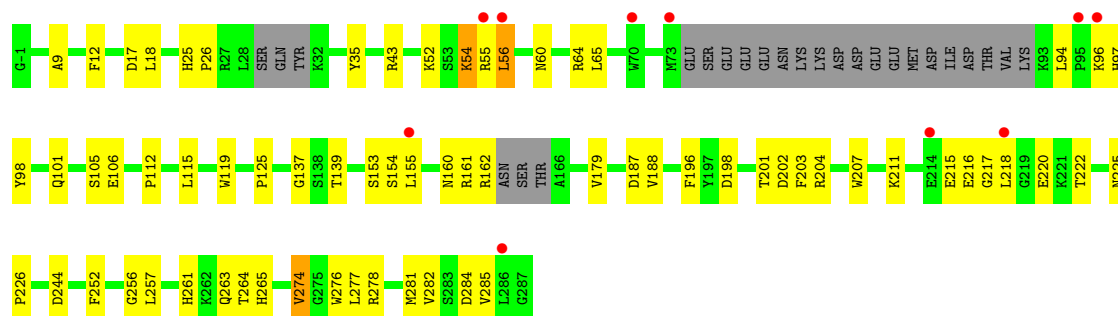


• Molecule 2: GTP-binding nuclear protein Ran

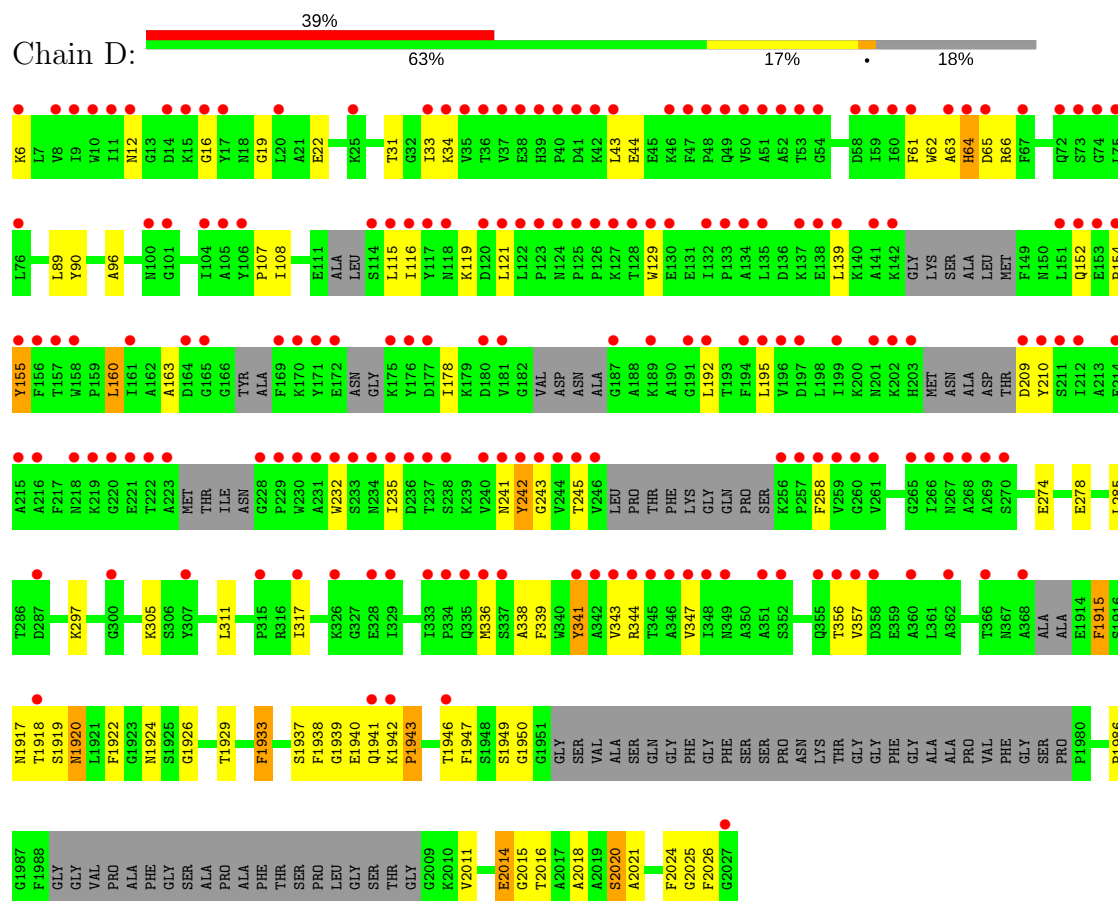


• Molecule 3: Snurportin-1





- Molecule 4: Maltose-binding periplasmic protein, Nuclear pore complex protein Nup214



4 Data and refinement statistics

Property	Value	Source
Space group	C 2 2 21	Depositor
Cell constants a, b, c, α , β , γ	112.33Å 248.97Å 210.57Å 90.00° 90.00° 90.00°	Depositor
Resolution (Å)	48.48 – 2.85 48.49 – 2.85	Depositor EDS
% Data completeness (in resolution range)	98.2 (48.48-2.85) 98.3 (48.49-2.85)	Depositor EDS
R_{merge}	0.06	Depositor
R_{sym}	(Not available)	Depositor
$\langle I/\sigma(I) \rangle$ ¹	2.12 (at 2.86Å)	Xtriage
Refinement program	PHENIX (phenix.refine: 1.9_1692)	Depositor
R, R_{free}	0.206 , 0.249 0.211 , 0.255	Depositor DCC
R_{free} test set	3390 reflections (5.00%)	DCC
Wilson B-factor (Å ²)	80.0	Xtriage
Anisotropy	0.811	Xtriage
Bulk solvent k_{sol} (e/Å ³), B_{sol} (Å ²)	0.30 , 97.2	EDS
L-test for twinning ²	$\langle L \rangle = 0.49$, $\langle L^2 \rangle = 0.32$	Xtriage
Estimated twinning fraction	No twinning to report.	Xtriage
F_o, F_c correlation	0.95	EDS
Total number of atoms	14991	wwPDB-VP
Average B, all atoms (Å ²)	125.0	wwPDB-VP

Xtriage's analysis on translational NCS is as follows: *The largest off-origin peak in the Patterson function is 3.15% of the height of the origin peak. No significant pseudotranslation is detected.*

¹Intensities estimated from amplitudes.

²Theoretical values of $\langle |L| \rangle$, $\langle L^2 \rangle$ for acentric reflections are 0.5, 0.333 respectively for untwinned datasets, and 0.375, 0.2 for perfectly twinned datasets.

5 Model quality [i](#)

5.1 Standard geometry [i](#)

Bond lengths and bond angles in the following residue types are not validated in this section: GTP, MG, MAL

The Z score for a bond length (or angle) is the number of standard deviations the observed value is removed from the expected value. A bond length (or angle) with $|Z| > 5$ is considered an outlier worth inspection. RMSZ is the root-mean-square of all Z scores of the bond lengths (or angles).

Mol	Chain	Bond lengths		Bond angles	
		RMSZ	$\# Z > 5$	RMSZ	$\# Z > 5$
1	A	0.33	0/8537	0.48	0/11566
2	B	0.35	0/1432	0.48	0/1932
3	C	0.30	0/2186	0.48	0/2957
4	D	0.32	0/3080	0.49	0/4158
All	All	0.32	0/15235	0.48	0/20613

There are no bond length outliers.

There are no bond angle outliers.

There are no chirality outliers.

There are no planarity outliers.

5.2 Too-close contacts [i](#)

In the following table, the Non-H and H(model) columns list the number of non-hydrogen atoms and hydrogen atoms in the chain respectively. The H(added) column lists the number of hydrogen atoms added and optimized by MolProbity. The Clashes column lists the number of clashes within the asymmetric unit, whereas Symm-Clashes lists symmetry related clashes.

Mol	Chain	Non-H	H(model)	H(added)	Clashes	Symm-Clashes
1	A	8366	0	8417	139	0
2	B	1398	0	1425	15	0
3	C	2131	0	2083	44	0
4	D	3012	0	2923	68	0
5	A	8	0	7	0	0
5	C	8	0	7	1	0
6	A	23	0	22	1	0
7	B	32	0	12	0	0
8	B	1	0	0	0	0

Continued on next page...

Continued from previous page...

Mol	Chain	Non-H	H(model)	H(added)	Clashes	Symm-Clashes
9	A	3	0	0	1	0
9	B	9	0	0	0	0
All	All	14991	0	14896	251	0

The all-atom clashscore is defined as the number of clashes found per 1000 atoms (including hydrogen atoms). The all-atom clashscore for this structure is 8.

The worst 5 of 251 close contacts within the same asymmetric unit are listed below, sorted by their clash magnitude.

Atom-1	Atom-2	Interatomic distance (Å)	Clash overlap (Å)
4:D:338:ALA:HA	4:D:341:TYR:CE2	2.12	0.84
4:D:2018:ALA:O	4:D:2021:ALA:HB3	1.83	0.78
4:D:155:TYR:HE2	4:D:258:PHE:CE1	2.02	0.77
1:A:251:ILE:HG21	1:A:289:LEU:HB3	1.67	0.77
1:A:471:ASP:OD1	1:A:474:ARG:NH2	2.23	0.72

There are no symmetry-related clashes.

5.3 Torsion angles [i](#)

5.3.1 Protein backbone [i](#)

In the following table, the Percentiles column shows the percent Ramachandran outliers of the chain as a percentile score with respect to all X-ray entries followed by that with respect to entries of similar resolution.

The Analysed column shows the number of residues for which the backbone conformation was analysed, and the total number of residues.

Mol	Chain	Analysed	Favoured	Allowed	Outliers	Percentiles	
1	A	1028/1044 (98%)	983 (96%)	45 (4%)	0	100	100
2	B	170/172 (99%)	162 (95%)	8 (5%)	0	100	100
3	C	256/289 (89%)	241 (94%)	15 (6%)	0	100	100
4	D	371/479 (78%)	334 (90%)	34 (9%)	3 (1%)	22	52
All	All	1825/1984 (92%)	1720 (94%)	102 (6%)	3 (0%)	51	80

All (3) Ramachandran outliers are listed below:

Mol	Chain	Res	Type
4	D	1941	GLN
4	D	1933	PHE
4	D	1943	PRO

5.3.2 Protein sidechains [i](#)

In the following table, the Percentiles column shows the percent sidechain outliers of the chain as a percentile score with respect to all X-ray entries followed by that with respect to entries of similar resolution.

The Analysed column shows the number of residues for which the sidechain conformation was analysed, and the total number of residues.

Mol	Chain	Analysed	Rotameric	Outliers	Percentiles	
1	A	941/951 (99%)	929 (99%)	12 (1%)	73	91
2	B	151/151 (100%)	149 (99%)	2 (1%)	73	91
3	C	237/262 (90%)	227 (96%)	10 (4%)	34	66
4	D	304/360 (84%)	290 (95%)	14 (5%)	31	62
All	All	1633/1724 (95%)	1595 (98%)	38 (2%)	56	83

5 of 38 residues with a non-rotameric sidechain are listed below:

Mol	Chain	Res	Type
3	C	56	LEU
3	C	244	ASP
4	D	2014	GLU
3	C	179	VAL
3	C	274	VAL

Some sidechains can be flipped to improve hydrogen bonding and reduce clashes. All (2) such sidechains are listed below:

Mol	Chain	Res	Type
3	C	101	GLN
3	C	261	HIS

5.3.3 RNA [i](#)

There are no RNA molecules in this entry.

5.4 Non-standard residues in protein, DNA, RNA chains [i](#)

There are no non-standard protein/DNA/RNA residues in this entry.

5.5 Carbohydrates [i](#)

There are no carbohydrates in this entry.

5.6 Ligand geometry [i](#)

Of 5 ligands modelled in this entry, 1 is monoatomic - leaving 4 for Mogul analysis.

In the following table, the Counts columns list the number of bonds (or angles) for which Mogul statistics could be retrieved, the number of bonds (or angles) that are observed in the model and the number of bonds (or angles) that are defined in the chemical component dictionary. The Link column lists molecule types, if any, to which the group is linked. The Z score for a bond length (or angle) is the number of standard deviations the observed value is removed from the expected value. A bond length (or angle) with $|Z| > 2$ is considered an outlier worth inspection. RMSZ is the root-mean-square of all Z scores of the bond lengths (or angles).

Mol	Type	Chain	Res	Link	Bond lengths			Bond angles		
					Counts	RMSZ	$\# Z > 2$	Counts	RMSZ	$\# Z > 2$
5	PRO	A	1101	-	5,8,8	0.62	0	6,10,10	1.05	0
6	MAL	A	1102	-	24,24,24	0.44	0	35,35,35	1.72	6 (17%)
7	GTP	B	201	8	27,34,34	1.09	2 (7%)	27,54,54	2.10	6 (22%)
5	PRO	C	301	-	5,8,8	0.58	0	6,10,10	1.11	0

In the following table, the Chirals column lists the number of chiral outliers, the number of chiral centers analysed, the number of these observed in the model and the number defined in the chemical component dictionary. Similar counts are reported in the Torsion and Rings columns. '-' means no outliers of that kind were identified.

Mol	Type	Chain	Res	Link	Chirals	Torsions	Rings
5	PRO	A	1101	-	-	0/0/11/11	0/1/1/1
6	MAL	A	1102	-	-	0/8/48/48	0/2/2/2
7	GTP	B	201	8	-	0/18/38/38	0/3/3/3
5	PRO	C	301	-	-	0/0/11/11	0/1/1/1

All (2) bond length outliers are listed below:

Mol	Chain	Res	Type	Atoms	Z	Observed(Å)	Ideal(Å)
7	B	201	GTP	C5-C4	2.48	1.46	1.40
7	B	201	GTP	C6-C5	3.50	1.48	1.41

The worst 5 of 12 bond angle outliers are listed below:

Mol	Chain	Res	Type	Atoms	Z	Observed(°)	Ideal(°)
7	B	201	GTP	C5-C6-N1	-4.11	117.64	123.48
7	B	201	GTP	C6-C5-C4	-3.65	117.21	120.84
7	B	201	GTP	N3-C2-N1	-3.41	122.47	127.46
7	B	201	GTP	C4-C5-N7	-2.93	106.58	109.41
6	A	1102	MAL	C6-C5-C4	-2.06	108.18	113.00

There are no chirality outliers.

There are no torsion outliers.

There are no ring outliers.

2 monomers are involved in 2 short contacts:

Mol	Chain	Res	Type	Clashes	Symm-Clashes
6	A	1102	MAL	1	0
5	C	301	PRO	1	0

5.7 Other polymers [i](#)

There are no such residues in this entry.

5.8 Polymer linkage issues [i](#)

There are no chain breaks in this entry.

6 Fit of model and data [i](#)

6.1 Protein, DNA and RNA chains [i](#)

In the following table, the column labelled ‘#RSRZ > 2’ contains the number (and percentage) of RSRZ outliers, followed by percent RSRZ outliers for the chain as percentile scores relative to all X-ray entries and entries of similar resolution. The OWAB column contains the minimum, median, 95th percentile and maximum values of the occupancy-weighted average B-factor per residue. The column labelled ‘Q < 0.9’ lists the number of (and percentage) of residues with an average occupancy less than 0.9.

Mol	Chain	Analysed	<RSRZ>	#RSRZ > 2	OWAB(Å ²)	Q < 0.9
1	A	1032/1044 (98%)	0.00	6 (0%) 89 88	59, 92, 145, 259	0
2	B	172/172 (100%)	0.06	2 (1%) 79 77	57, 83, 128, 204	0
3	C	264/289 (91%)	0.08	10 (3%) 41 35	72, 125, 190, 230	0
4	D	395/479 (82%)	2.36	187 (47%) 0 0	109, 213, 281, 329	0
All	All	1863/1984 (93%)	0.52	205 (11%) 6 4	57, 105, 246, 329	0

The worst 5 of 205 RSRZ outliers are listed below:

Mol	Chain	Res	Type	RSRZ
4	D	346	ALA	19.6
4	D	348	ILE	11.2
4	D	234	ASN	11.1
4	D	201	ASN	10.6
4	D	115	LEU	10.4

6.2 Non-standard residues in protein, DNA, RNA chains [i](#)

There are no non-standard protein/DNA/RNA residues in this entry.

6.3 Carbohydrates [i](#)

There are no carbohydrates in this entry.

6.4 Ligands [i](#)

In the following table, the Atoms column lists the number of modelled atoms in the group and the number defined in the chemical component dictionary. LLDF column lists the quality of electron density of the group with respect to its neighbouring residues in protein, DNA or RNA chains. The B-factors column lists the minimum, median, 95th percentile and maximum values of B factors

of atoms in the group. The column labelled 'Q < 0.9' lists the number of atoms with occupancy less than 0.9.

Mol	Type	Chain	Res	Atoms	RSCC	RSR	LLDF	B-factors(\AA^2)	Q<0.9
5	PRO	C	301	8/8	0.76	0.72	15.45	166,188,275,329	0
5	PRO	A	1101	8/8	0.80	0.30	4.56	122,126,137,140	0
7	GTP	B	201	32/32	0.95	0.16	-0.51	56,75,106,135	0
8	MG	B	202	1/1	0.86	0.14	-0.52	94,94,94,94	0
6	MAL	A	1102	23/23	0.73	0.32	-	153,193,235,236	0

6.5 Other polymers [i](#)

There are no such residues in this entry.