



Full wwPDB X-ray Structure Validation Report ⓘ

Feb 15, 2017 – 12:56 am GMT

PDB ID : 4DJ6
Title : Structure of the hemagglutinin from a highly pathogenic H7N7 influenza virus
Authors : Yang, H.; Carney, P.J.; Donis, R.O.; Stevens, J.
Deposited on : 2012-02-01
Resolution : 2.61 Å(reported)

This is a Full wwPDB X-ray Structure Validation Report for a publicly released PDB entry.

We welcome your comments at validation@mail.wwpdb.org

A user guide is available at

<http://wwpdb.org/validation/2016/XrayValidationReportHelp>

with specific help available everywhere you see the ⓘ symbol.

The following versions of software and data (see [references ⓘ](#)) were used in the production of this report:

MolProbity : 4.02b-467
Mogul : 1.7.2 (RC1), CSD as538be (2017)
Xtriage (Phenix) : 1.9-1692
EDS : trunk28620
Percentile statistics : 20161228.v01 (using entries in the PDB archive December 28th 2016)
Refmac : 5.8.0135
CCP4 : 6.5.0
Ideal geometry (proteins) : Engh & Huber (2001)
Ideal geometry (DNA, RNA) : Parkinson et al. (1996)
Validation Pipeline (wwPDB-VP) : recalc28949

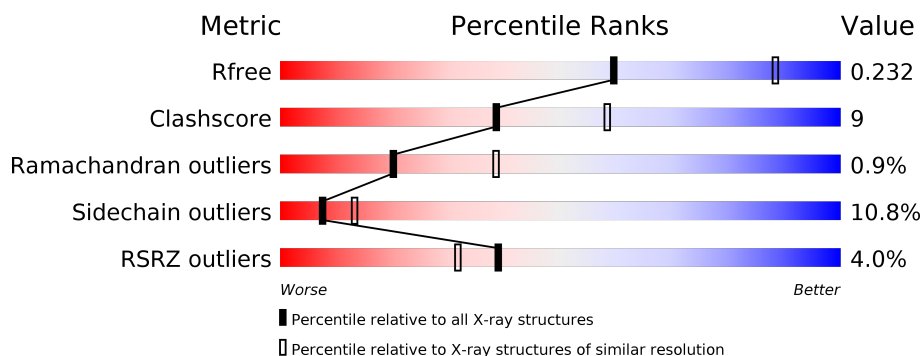
1 Overall quality at a glance

The following experimental techniques were used to determine the structure:

X-RAY DIFFRACTION

The reported resolution of this entry is 2.61 Å.

Percentile scores (ranging between 0-100) for global validation metrics of the entry are shown in the following graphic. The table shows the number of entries on which the scores are based.



Metric	Whole archive (#Entries)	Similar resolution (#Entries, resolution range(Å))
R_{free}	100719	2983 (2.64-2.60)
Clashscore	112137	3351 (2.64-2.60)
Ramachandran outliers	110173	3298 (2.64-2.60)
Sidechain outliers	110143	3298 (2.64-2.60)
RSRZ outliers	101464	2992 (2.64-2.60)

The table below summarises the geometric issues observed across the polymeric chains and their fit to the electron density. The red, orange, yellow and green segments on the lower bar indicate the fraction of residues that contain outliers for ≥ 3 , 2, 1 and 0 types of geometric quality criteria. A grey segment represents the fraction of residues that are not modelled. The numeric value for each fraction is indicated below the corresponding segment, with a dot representing fractions $\leq 5\%$. The upper red bar (where present) indicates the fraction of residues that have poor fit to the electron density. The numeric value is given above the bar.

Mol	Chain	Length	Quality of chain
1	A	327	<div> <div>76%</div> <div>17%</div> <div>• • •</div> </div>
1	C	327	<div> <div>78%</div> <div>15%</div> <div>• •</div> </div>
1	E	327	<div> <div>78%</div> <div>17%</div> <div>• •</div> </div>
2	B	177	<div> <div>10%</div> <div>71%</div> <div>18%</div> <div>7%</div> <div>•</div> </div>
2	D	177	<div> <div>9%</div> <div>69%</div> <div>21%</div> <div>6%</div> <div>•</div> </div>
2	F	177	<div> <div>11%</div> <div>71%</div> <div>19%</div> <div>5%</div> <div>5%</div> </div>

The following table lists non-polymeric compounds, carbohydrate monomers and non-standard residues in protein, DNA, RNA chains that are outliers for geometric or electron-density-fit criteria:

Mol	Type	Chain	Res	Chirality	Geometry	Clashes	Electron density
4	NAG	C	402	X	-	-	-

2 Entry composition

There are 5 unique types of molecules in this entry. The entry contains 11804 atoms, of which 0 are hydrogens and 0 are deuteriums.

In the tables below, the ZeroOcc column contains the number of atoms modelled with zero occupancy, the AltConf column contains the number of residues with at least one atom in alternate conformation and the Trace column contains the number of residues modelled with at most 2 atoms.

- Molecule 1 is a protein called Hemagglutinin.

Mol	Chain	Residues	Atoms					ZeroOcc	AltConf	Trace
1	A	316	Total	C	N	O	S	6	0	0
			2422	1502	435	471	14			
1	C	316	Total	C	N	O	S	0	0	0
			2422	1502	435	471	14			
1	E	317	Total	C	N	O	S	4	0	0
			2426	1504	436	472	14			

There are 12 discrepancies between the modelled and reference sequences:

Chain	Residue	Modelled	Actual	Comment	Reference
A	-3	ALA	-	EXPRESSION TAG	UNP Q6VMK1
A	-2	ASP	-	EXPRESSION TAG	UNP Q6VMK1
A	-1	PRO	-	EXPRESSION TAG	UNP Q6VMK1
A	0	GLY	-	EXPRESSION TAG	UNP Q6VMK1
C	-3	ALA	-	EXPRESSION TAG	UNP Q6VMK1
C	-2	ASP	-	EXPRESSION TAG	UNP Q6VMK1
C	-1	PRO	-	EXPRESSION TAG	UNP Q6VMK1
C	0	GLY	-	EXPRESSION TAG	UNP Q6VMK1
E	-3	ALA	-	EXPRESSION TAG	UNP Q6VMK1
E	-2	ASP	-	EXPRESSION TAG	UNP Q6VMK1
E	-1	PRO	-	EXPRESSION TAG	UNP Q6VMK1
E	0	GLY	-	EXPRESSION TAG	UNP Q6VMK1

- Molecule 2 is a protein called Hemagglutinin.

Mol	Chain	Residues	Atoms					ZeroOcc	AltConf	Trace
2	B	170	Total	C	N	O	S	4	0	0
			1380	851	243	279	7			
2	D	171	Total	C	N	O	S	0	0	0
			1388	857	244	280	7			
2	F	169	Total	C	N	O	S	0	0	0
			1369	845	239	278	7			

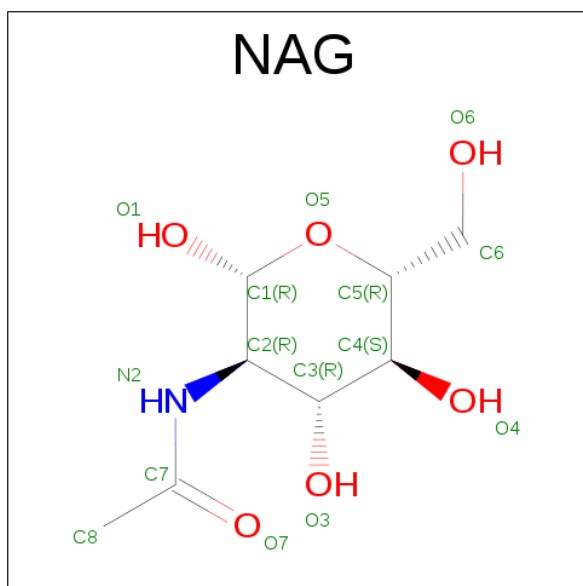
There are 9 discrepancies between the modelled and reference sequences:

Chain	Residue	Modelled	Actual	Comment	Reference
B	175	SER	-	EXPRESSION TAG	UNP Q6VMK1
B	176	GLY	-	EXPRESSION TAG	UNP Q6VMK1
B	177	ARG	-	EXPRESSION TAG	UNP Q6VMK1
D	175	SER	-	EXPRESSION TAG	UNP Q6VMK1
D	176	GLY	-	EXPRESSION TAG	UNP Q6VMK1
D	177	ARG	-	EXPRESSION TAG	UNP Q6VMK1
F	175	SER	-	EXPRESSION TAG	UNP Q6VMK1
F	176	GLY	-	EXPRESSION TAG	UNP Q6VMK1
F	177	ARG	-	EXPRESSION TAG	UNP Q6VMK1

- Molecule 3 is a polymer of unknown type called SUGAR (2-MER).

Mol	Chain	Residues	Atoms				ZeroOcc	AltConf
3	A	2	Total	C	N	O	0	0
			28	16	2	10		

- Molecule 4 is SUGAR (N-ACETYL-D-GLUCOSAMINE) (three-letter code: NAG) (formula: $C_8H_{15}NO_6$).



Mol	Chain	Residues	Atoms				ZeroOcc	AltConf
4	A	1	Total	C	N	O	0	0
			14	8	1	5		
4	A	1	Total	C	N	O	0	0
			14	8	1	5		
4	B	1	Total	C	N	O	0	0
			14	8	1	5		

Continued on next page...

Continued from previous page...

Mol	Chain	Residues	Atoms				ZeroOcc	AltConf
4	C	1	Total	C	N	O	0	0
			14	8	1	5		
4	C	1	Total	C	N	O	0	0
			14	8	1	5		
4	C	1	Total	C	N	O	0	0
			14	8	1	5		
4	D	1	Total	C	N	O	0	0
			14	8	1	5		
4	E	1	Total	C	N	O	0	0
			14	8	1	5		
4	E	1	Total	C	N	O	0	0
			14	8	1	5		
4	E	1	Total	C	N	O	0	0
			14	8	1	5		
4	F	1	Total	C	N	O	0	0
			14	8	1	5		

- Molecule 5 is water.

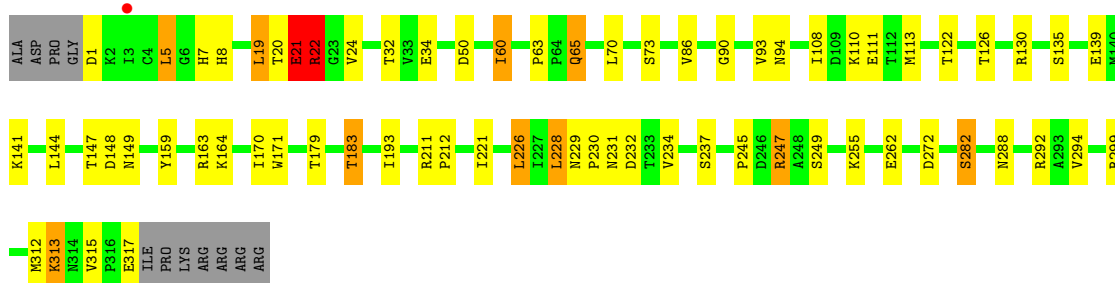
Mol	Chain	Residues	Atoms		ZeroOcc	AltConf
5	A	59	Total	O	0	0
			59	59		
5	B	12	Total	O	0	0
			12	12		
5	C	59	Total	O	0	0
			59	59		
5	D	13	Total	O	0	0
			13	13		
5	E	54	Total	O	0	0
			54	54		
5	F	18	Total	O	0	0
			18	18		

3 Residue-property plots [i](#)


These plots are drawn for all protein, RNA and DNA chains in the entry. The first graphic for a chain summarises the proportions of the various outlier classes displayed in the second graphic. The second graphic shows the sequence view annotated by issues in geometry and electron density. Residues are color-coded according to the number of geometric quality criteria for which they contain at least one outlier: green = 0, yellow = 1, orange = 2 and red = 3 or more. A red dot above a residue indicates a poor fit to the electron density ($RSRZ > 2$). Stretches of 2 or more consecutive residues without any outlier are shown as a green connector. Residues present in the sample, but not in the model, are shown in grey.

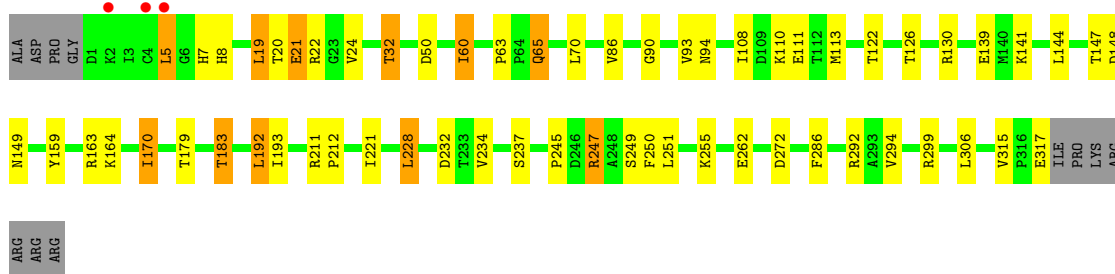
• Molecule 1: Hemagglutinin

Chain A: 




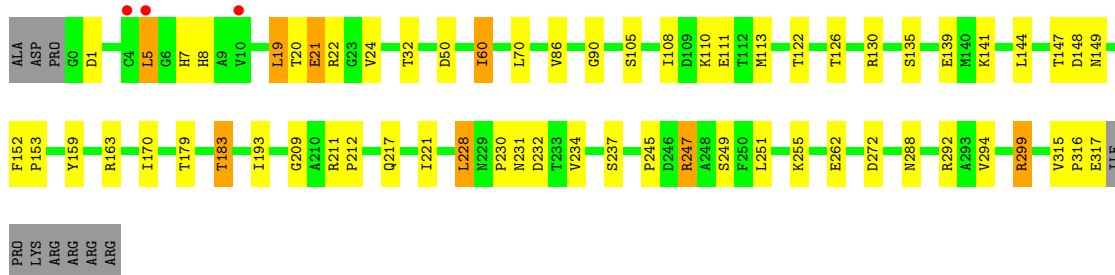
• Molecule 1: Hemagglutinin

Chain C: 

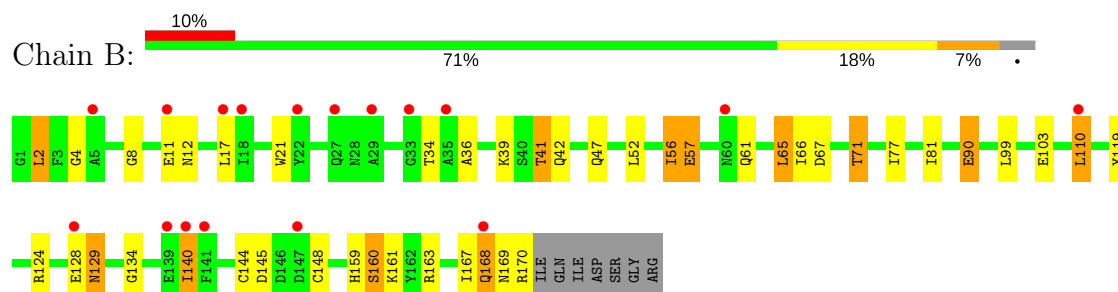


• Molecule 1: Hemagglutinin

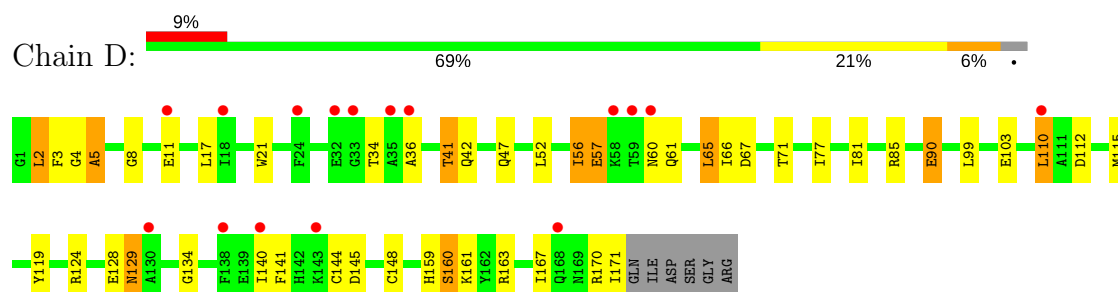
Chain E: 



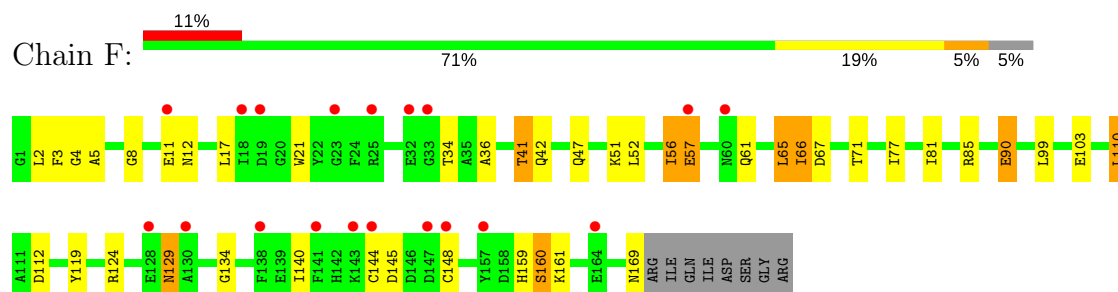
- Molecule 2: Hemagglutinin



- Molecule 2: Hemagglutinin



- Molecule 2: Hemagglutinin



4 Data and refinement statistics

Property	Value	Source
Space group	C 1 2 1	Depositor
Cell constants a, b, c, α , β , γ	201.95Å 116.57Å 117.32Å 90.00° 124.92° 90.00°	Depositor
Resolution (Å)	49.85 – 2.61 49.85 – 2.61	Depositor EDS
% Data completeness (in resolution range)	99.0 (49.85-2.61) 99.0 (49.85-2.61)	Depositor EDS
R_{merge}	(Not available)	Depositor
R_{sym}	0.14	Depositor
$\langle I/\sigma(I) \rangle$ ¹	2.74 (at 2.61Å)	Xtriage
Refinement program	REFMAC 5.5.0102	Depositor
R, R_{free}	0.203 , 0.236 0.200 , 0.232	Depositor DCC
R_{free} test set	3418 reflections (5.34%)	DCC
Wilson B-factor (Å ²)	49.1	Xtriage
Anisotropy	0.021	Xtriage
Bulk solvent k_{sol} (e/Å ³), B_{sol} (Å ²)	0.33 , 30.3	EDS
L-test for twinning ²	$\langle L \rangle = 0.49$, $\langle L^2 \rangle = 0.32$	Xtriage
Estimated twinning fraction	0.015 for -1/2*h-3/2*k-l,-1/2*h+1/2*k-l,1/2* *h+1/2*k 0.009 for 1/2*h+1/2*k+2*l,1/2*h+1/2*k,-1 /2*h+1/2*k-l 0.019 for 1/2*h-1/2*k+2*l,-1/2*h+1/2*k,-1 /2*h-1/2*k-l 0.015 for -1/2*h+3/2*k-l,1/2*h+1/2*k+l,1 /2*h-1/2*k 0.007 for -h-k-l,l,k 0.021 for -h+k-l,-l,-k 0.008 for -1/2*h-1/2*k+l,-1/2*h-1/2*k-l,1/2* *h-1/2*k 0.019 for -1/2*h+1/2*k+l,1/2*h-1/2*k+l,1 /2*h+1/2*k 0.457 for 1/2*h-3/2*k,-1/2*h-1/2*k,-1/2*h +1/2*k-l 0.457 for 1/2*h+3/2*k,1/2*h-1/2*k,-1/2*h- 1/2*k-l 0.017 for -h-2*l,-k,l	Xtriage
F_o, F_c correlation	0.94	EDS
Total number of atoms	11804	wwPDB-VP
Average B, all atoms (Å ²)	66.0	wwPDB-VP

¹Intensities estimated from amplitudes.

²Theoretical values of $\langle |L| \rangle$, $\langle L^2 \rangle$ for acentric reflections are 0.5, 0.333 respectively for untwinned datasets, and 0.375, 0.2 for perfectly twinned datasets.

Xtrriage's analysis on translational NCS is as follows: *The largest off-origin peak in the Patterson function is 3.77% of the height of the origin peak. No significant pseudotranslation is detected.*

5 Model quality

5.1 Standard geometry

Bond lengths and bond angles in the following residue types are not validated in this section: NAG

The Z score for a bond length (or angle) is the number of standard deviations the observed value is removed from the expected value. A bond length (or angle) with $|Z| > 5$ is considered an outlier worth inspection. RMSZ is the root-mean-square of all Z scores of the bond lengths (or angles).

Mol	Chain	Bond lengths		Bond angles	
		RMSZ	# Z >5	RMSZ	# Z >5
1	A	1.36	2/2468 (0.1%)	2.84	4/3337 (0.1%)
1	C	0.48	0/2468	0.57	0/3337
1	E	0.45	0/2472	0.56	0/3342
2	B	0.39	0/1404	0.53	1/1892 (0.1%)
2	D	0.37	0/1412	0.46	0/1903
2	F	0.36	0/1393	0.47	0/1878
All	All	0.73	2/11617 (0.0%)	1.39	5/15689 (0.0%)

Chiral center outliers are detected by calculating the chiral volume of a chiral center and verifying if the center is modelled as a planar moiety or with the opposite hand. A planarity outlier is detected by checking planarity of atoms in a peptide group, atoms in a mainchain group or atoms of a sidechain that are expected to be planar.

Mol	Chain	#Chirality outliers	#Planarity outliers
1	A	0	3
1	C	0	1
1	E	0	1
2	B	0	1
2	D	0	1
2	F	0	1
All	All	0	8

All (2) bond length outliers are listed below:

Mol	Chain	Res	Type	Atoms	Z	Observed(Å)	Ideal(Å)
1	A	22	ARG	NE-CZ	63.21	2.15	1.33
1	A	21	GLU	CG-CD	-7.53	1.40	1.51

All (5) bond angle outliers are listed below:

Mol	Chain	Res	Type	Atoms	Z	Observed(°)	Ideal(°)
1	A	22	ARG	NE-CZ-NH1	-134.49	53.05	120.30
1	A	22	ARG	NE-CZ-NH2	83.86	162.23	120.30
1	A	22	ARG	CD-NE-CZ	-23.50	90.69	123.60
1	A	21	GLU	CG-CD-OE1	-14.06	90.18	118.30
2	B	39	LYS	CA-CB-CG	-11.02	89.15	113.40

There are no chirality outliers.

All (8) planarity outliers are listed below:

Mol	Chain	Res	Type	Group
1	A	19	LEU	Peptide
1	A	21	GLU	Sidechain
1	A	22	ARG	Sidechain
2	B	56	ILE	Peptide
1	C	19	LEU	Peptide
2	D	56	ILE	Peptide
1	E	19	LEU	Peptide
2	F	56	ILE	Peptide

5.2 Too-close contacts ⓘ

In the following table, the Non-H and H(model) columns list the number of non-hydrogen atoms and hydrogen atoms in the chain respectively. The H(added) column lists the number of hydrogen atoms added and optimized by MolProbity. The Clashes column lists the number of clashes within the asymmetric unit, whereas Symm-Clashes lists symmetry related clashes.

Mol	Chain	Non-H	H(model)	H(added)	Clashes	Symm-Clashes
1	A	2422	0	2369	45	0
1	C	2422	0	2369	42	0
1	E	2426	0	2372	40	0
2	B	1380	0	1283	31	0
2	D	1388	0	1294	33	0
2	F	1369	0	1270	26	0
3	A	28	0	25	0	0
4	A	28	0	26	0	0
4	B	14	0	13	0	0
4	C	42	0	39	3	0
4	D	14	0	13	0	0
4	E	42	0	39	0	0
4	F	14	0	13	0	0
5	A	59	0	0	0	0
5	B	12	0	0	1	0

Continued on next page...

Continued from previous page...

Mol	Chain	Non-H	H(model)	H(added)	Clashes	Symm-Clashes
5	C	59	0	0	0	0
5	D	13	0	0	2	0
5	E	54	0	0	1	0
5	F	18	0	0	2	0
All	All	11804	0	11125	194	0

The all-atom clashscore is defined as the number of clashes found per 1000 atoms (including hydrogen atoms). The all-atom clashscore for this structure is 9.

All (194) close contacts within the same asymmetric unit are listed below, sorted by their clash magnitude.

Atom-1	Atom-2	Interatomic distance (Å)	Clash overlap (Å)
4:C:403:NAG:C6	4:C:403:NAG:O6	1.69	1.40
2:D:60:ASN:HB2	5:D:301:HOH:O	1.53	1.08
1:C:60:ILE:HG21	1:C:170:ILE:HD13	1.08	1.06
1:C:60:ILE:CG2	1:C:170:ILE:HD13	1.91	1.00
1:C:5:LEU:HD22	1:C:5:LEU:H	1.33	0.93
1:C:60:ILE:HG21	1:C:170:ILE:CD1	1.99	0.89
1:A:5:LEU:H	1:A:5:LEU:HD22	1.35	0.89
1:E:292:ARG:HH21	2:F:67:ASP:HB3	1.38	0.89
1:E:5:LEU:HD22	1:E:5:LEU:H	1.35	0.88
1:A:292:ARG:HH21	2:B:67:ASP:HB3	1.39	0.85
1:C:5:LEU:CD2	1:C:5:LEU:H	1.90	0.84
1:A:5:LEU:H	1:A:5:LEU:CD2	1.90	0.83
1:C:292:ARG:HH21	2:D:67:ASP:HB3	1.41	0.83
2:B:124:ARG:HD3	2:D:134:GLY:HA2	1.60	0.83
1:E:5:LEU:H	1:E:5:LEU:CD2	1.91	0.82
2:F:67:ASP:HB2	5:F:307:HOH:O	1.81	0.80
2:B:61:GLN:OE1	2:D:90:GLU:HG2	1.84	0.78
1:E:294:VAL:HG11	2:F:65:LEU:HD13	1.65	0.78
2:D:61:GLN:OE1	2:F:90:GLU:HG2	1.82	0.78
2:B:134:GLY:HA2	2:F:124:ARG:HD3	1.65	0.78
2:D:124:ARG:HD3	2:F:134:GLY:HA2	1.65	0.77
1:C:294:VAL:HG11	2:D:65:LEU:HD13	1.67	0.77
2:B:90:GLU:HG2	2:F:61:GLN:OE1	1.84	0.77
1:A:171:TRP:HZ3	1:A:226:LEU:HD23	1.49	0.76
1:A:148:ASP:O	1:A:149:ASN:HB2	1.86	0.76
1:E:60:ILE:HG21	1:E:170:ILE:CD1	2.16	0.76
1:E:60:ILE:HG21	1:E:170:ILE:HD11	1.68	0.75
1:E:113:MET:HE3	1:E:159:TYR:CG	2.23	0.74
1:E:148:ASP:O	1:E:149:ASN:HB2	1.88	0.73

Continued on next page...

Continued from previous page...

Atom-1	Atom-2	Interatomic distance (Å)	Clash overlap (Å)
1:C:113:MET:HE3	1:C:159:TYR:CG	2.24	0.73
1:C:148:ASP:O	1:C:149:ASN:HB2	1.88	0.72
1:A:113:MET:HE3	1:A:159:TYR:CG	2.25	0.72
2:B:67:ASP:HB2	5:B:305:HOH:O	1.90	0.72
1:A:60:ILE:HG21	1:A:170:ILE:CD1	2.20	0.71
2:B:128:GLU:O	2:B:170:ARG:NH1	2.24	0.70
1:A:294:VAL:HG11	2:B:65:LEU:HD13	1.75	0.68
2:D:66:ILE:HD13	2:D:81:ILE:HG21	1.76	0.67
1:A:60:ILE:CG2	1:A:170:ILE:HG13	2.26	0.66
1:C:179:THR:O	1:C:183:THR:HG23	1.97	0.65
2:D:4:GLY:O	2:D:8:GLY:HA3	1.98	0.64
1:A:228:LEU:HG	1:A:234:VAL:HG22	1.79	0.64
1:E:228:LEU:HG	1:E:234:VAL:HG22	1.80	0.63
1:E:21:GLU:HG3	1:E:22:ARG:N	2.13	0.62
2:B:66:ILE:HD13	2:B:81:ILE:HG21	1.80	0.62
2:D:128:GLU:O	2:D:170:ARG:NH1	2.33	0.62
1:E:228:LEU:HD22	1:E:232:ASP:HB3	1.82	0.61
1:A:60:ILE:HG21	1:A:170:ILE:HD11	1.81	0.61
2:F:4:GLY:O	2:F:8:GLY:HA3	2.01	0.61
4:C:403:NAG:O6	4:C:403:NAG:C5	2.49	0.61
2:F:66:ILE:HD13	2:F:81:ILE:HG21	1.83	0.61
1:C:21:GLU:HG3	1:C:22:ARG:N	2.13	0.61
2:B:163:ARG:O	2:B:167:ILE:HG13	2.00	0.61
1:C:5:LEU:HD22	1:C:5:LEU:N	2.13	0.60
1:A:171:TRP:CZ3	1:A:226:LEU:HD23	2.35	0.60
1:E:60:ILE:CG2	1:E:170:ILE:HG13	2.32	0.59
1:A:63:PRO:HB2	1:A:65:GLN:OE1	2.02	0.59
1:A:228:LEU:HD22	1:A:232:ASP:HB3	1.84	0.59
1:C:63:PRO:HB2	1:C:65:GLN:OE1	2.03	0.59
1:A:139:GLU:OE1	1:A:247:ARG:HD3	2.03	0.59
1:C:228:LEU:HG	1:C:234:VAL:HG22	1.85	0.59
1:C:139:GLU:OE1	1:C:247:ARG:HD3	2.03	0.59
2:D:17:LEU:HD11	2:D:36:ALA:HB2	1.85	0.58
1:E:179:THR:O	1:E:183:THR:HG23	2.03	0.58
2:B:4:GLY:O	2:B:8:GLY:HA3	2.03	0.58
1:C:113:MET:CE	1:C:159:TYR:CG	2.86	0.58
1:A:211:ARG:HB3	1:A:212:PRO:HD2	1.85	0.57
1:E:113:MET:CE	1:E:159:TYR:CG	2.87	0.57
1:C:228:LEU:HD22	1:C:232:ASP:HB3	1.86	0.57
1:A:5:LEU:HD22	1:A:5:LEU:N	2.14	0.57
1:C:192:LEU:HD12	1:E:209:GLY:HA3	1.87	0.57

Continued on next page...

Continued from previous page...

Atom-1	Atom-2	Interatomic distance (Å)	Clash overlap (Å)
1:A:113:MET:CE	1:A:159:TYR:CG	2.89	0.55
1:C:193:ILE:N	1:C:193:ILE:HD12	2.21	0.55
1:E:139:GLU:OE1	1:E:247:ARG:HD3	2.06	0.55
1:C:228:LEU:HD11	1:C:234:VAL:HG23	1.88	0.55
2:F:17:LEU:HD11	2:F:36:ALA:HB2	1.87	0.55
2:B:17:LEU:HD11	2:B:36:ALA:HB2	1.88	0.54
1:E:5:LEU:HD22	1:E:5:LEU:N	2.14	0.53
1:A:317:GLU:HA	2:B:12:ASN:HD22	1.73	0.53
2:F:145:ASP:N	2:F:145:ASP:OD1	2.42	0.53
1:A:70:LEU:O	1:A:110:LYS:NZ	2.42	0.52
1:C:7:HIS:HA	2:D:21:TRP:O	2.09	0.52
2:D:3:PHE:N	2:D:112:ASP:OD2	2.40	0.51
1:E:317:GLU:HG3	2:F:12:ASN:ND2	2.26	0.51
2:B:168:GLN:C	2:B:170:ARG:H	2.13	0.51
2:B:128:GLU:OE1	2:D:170:ARG:NH2	2.44	0.51
1:A:93:VAL:O	1:A:94:ASN:HB2	2.11	0.51
2:D:145:ASP:OD1	2:D:145:ASP:N	2.44	0.51
2:D:163:ARG:O	2:D:167:ILE:HG13	2.10	0.50
1:C:228:LEU:CD2	1:C:232:ASP:HB3	2.40	0.50
2:D:77:ILE:HD11	2:F:77:ILE:HD12	1.94	0.50
1:E:110:LYS:HE3	1:E:249:SER:OG	2.12	0.50
1:A:179:THR:O	1:A:183:THR:HG23	2.12	0.50
1:A:90:GLY:HA3	1:A:221:ILE:O	2.11	0.50
4:C:403:NAG:C6	4:C:403:NAG:HO6	2.13	0.50
1:A:171:TRP:CZ3	1:A:226:LEU:CD2	2.94	0.50
1:E:228:LEU:CD2	1:E:232:ASP:HB3	2.42	0.49
2:F:47:GLN:OE1	2:F:110:LEU:HD11	2.12	0.49
2:B:129:ASN:OD1	2:B:129:ASN:N	2.46	0.49
2:B:47:GLN:OE1	2:B:110:LEU:HD11	2.12	0.49
1:C:5:LEU:CD2	1:C:5:LEU:N	2.63	0.49
2:D:163:ARG:HG2	2:D:167:ILE:CD1	2.43	0.49
1:A:228:LEU:HD11	1:A:234:VAL:HG23	1.94	0.49
1:E:228:LEU:HD11	1:E:234:VAL:HG23	1.93	0.49
1:C:90:GLY:HA3	1:C:221:ILE:O	2.13	0.49
2:F:85:ARG:HD2	5:F:313:HOH:O	2.13	0.48
2:F:99:LEU:O	2:F:103:GLU:HG2	2.13	0.48
2:F:129:ASN:N	2:F:129:ASN:OD1	2.46	0.48
1:E:113:MET:HE3	1:E:159:TYR:CD2	2.48	0.48
1:E:90:GLY:HA3	1:E:221:ILE:O	2.13	0.48
2:D:129:ASN:OD1	2:D:129:ASN:N	2.46	0.47
1:A:7:HIS:HA	2:B:21:TRP:O	2.14	0.47

Continued on next page...

Continued from previous page...

Atom-1	Atom-2	Interatomic distance (Å)	Clash overlap (Å)
1:A:5:LEU:CD2	1:A:5:LEU:N	2.62	0.47
1:E:7:HIS:HA	2:F:21:TRP:O	2.15	0.47
1:E:111:GLU:OE2	1:E:163:ARG:HD2	2.15	0.46
1:E:211:ARG:HB3	1:E:212:PRO:HD2	1.96	0.46
2:D:56:ILE:CG2	2:D:56:ILE:O	2.64	0.46
1:C:163:ARG:HD3	1:C:250:PHE:CZ	2.50	0.46
1:C:228:LEU:CD1	1:C:234:VAL:HG23	2.45	0.46
1:E:193:ILE:HD12	1:E:193:ILE:N	2.31	0.46
1:E:50:ASP:C	1:E:50:ASP:OD1	2.54	0.46
2:B:159:HIS:CG	2:B:160:SER:N	2.84	0.46
1:A:228:LEU:CD2	1:A:232:ASP:HB3	2.45	0.46
2:B:145:ASP:N	2:B:145:ASP:OD1	2.43	0.46
2:F:159:HIS:CG	2:F:160:SER:N	2.83	0.46
1:C:294:VAL:CG1	2:D:65:LEU:HD13	2.43	0.45
1:A:147:THR:HG22	1:A:148:ASP:H	1.82	0.45
2:D:159:HIS:CG	2:D:160:SER:N	2.85	0.45
2:B:159:HIS:C	2:B:161:LYS:H	2.20	0.45
2:D:99:LEU:O	2:D:103:GLU:HG2	2.16	0.45
1:E:70:LEU:O	1:E:110:LYS:NZ	2.47	0.45
1:E:294:VAL:CG1	2:F:65:LEU:HD13	2.42	0.45
1:A:193:ILE:N	1:A:193:ILE:HD12	2.31	0.45
2:B:41:THR:HG22	2:B:42:GLN:N	2.30	0.45
2:D:47:GLN:OE1	2:D:110:LEU:HD11	2.17	0.45
1:A:230:PRO:O	1:A:231:ASN:CB	2.65	0.44
2:D:163:ARG:HG2	2:D:167:ILE:HD11	1.99	0.44
1:A:312:MET:HG3	1:A:313:LYS:O	2.17	0.44
1:A:50:ASP:C	1:A:50:ASP:OD1	2.56	0.44
1:C:113:MET:CE	1:C:159:TYR:CD2	3.01	0.44
2:D:159:HIS:C	2:D:161:LYS:H	2.20	0.44
1:C:32:THR:HB	1:C:306:LEU:O	2.18	0.44
1:A:34:GLU:OE1	1:A:282:SER:HB2	2.17	0.44
1:C:70:LEU:O	1:C:110:LYS:NZ	2.49	0.44
2:D:85:ARG:HD2	5:D:309:HOH:O	2.16	0.44
2:F:56:ILE:CG2	2:F:56:ILE:O	2.65	0.44
1:E:113:MET:CE	1:E:159:TYR:CD2	3.01	0.44
2:F:3:PHE:N	2:F:112:ASP:OD2	2.41	0.44
2:F:159:HIS:C	2:F:161:LYS:H	2.20	0.44
1:C:110:LYS:HE3	1:C:249:SER:OG	2.16	0.44
2:F:41:THR:HG22	2:F:42:GLN:N	2.31	0.43
2:B:2:LEU:HD23	2:B:2:LEU:HA	1.84	0.43
2:B:99:LEU:O	2:B:103:GLU:HG2	2.18	0.43

Continued on next page...

Continued from previous page...

Atom-1	Atom-2	Interatomic distance (Å)	Clash overlap (Å)
1:C:111:GLU:OE2	1:C:163:ARG:HD2	2.18	0.43
1:C:211:ARG:HB3	1:C:212:PRO:HD2	2.00	0.43
2:F:51:LYS:NZ	2:F:103:GLU:O	2.51	0.43
1:C:50:ASP:C	1:C:50:ASP:OD1	2.56	0.43
1:E:217:GLN:HA	1:E:217:GLN:OE1	2.19	0.43
2:D:141:PHE:CD1	2:D:170:ARG:HD2	2.54	0.43
1:A:139:GLU:OE2	1:A:247:ARG:NH1	2.52	0.43
2:B:56:ILE:CG2	2:B:56:ILE:O	2.66	0.43
1:E:170:ILE:O	1:E:245:PRO:HB3	2.17	0.43
1:A:110:LYS:HE3	1:A:249:SER:OG	2.19	0.43
1:C:147:THR:HG22	1:C:148:ASP:H	1.84	0.43
1:C:32:THR:HG23	1:C:286:PHE:HD1	1.84	0.42
1:A:113:MET:CE	1:A:159:TYR:CD2	3.02	0.42
2:B:77:ILE:HD12	2:F:77:ILE:HD11	2.01	0.42
1:A:111:GLU:OE2	1:A:163:ARG:HD2	2.18	0.42
1:A:170:ILE:O	1:A:245:PRO:HB3	2.20	0.42
1:E:147:THR:HG22	1:E:148:ASP:H	1.83	0.42
1:A:294:VAL:CG1	2:B:65:LEU:HD13	2.47	0.42
2:B:77:ILE:HD11	2:D:77:ILE:HD12	2.00	0.42
1:E:105:SER:HB2	1:E:251:LEU:HD22	2.02	0.42
2:D:41:THR:HG22	2:D:42:GLN:N	2.35	0.42
1:C:170:ILE:O	1:C:245:PRO:HB3	2.20	0.42
1:C:113:MET:HE3	1:C:159:TYR:CD2	2.55	0.41
1:E:228:LEU:CD1	1:E:234:VAL:HG23	2.50	0.41
1:E:288:ASN:O	1:E:288:ASN:CG	2.59	0.41
1:A:113:MET:HE3	1:A:159:TYR:CD2	2.55	0.41
2:B:140:ILE:H	2:B:140:ILE:HG13	1.72	0.41
2:D:5:ALA:HB1	2:D:115:MET:HG2	2.02	0.41
2:B:71:THR:HG22	5:E:516:HOH:O	2.20	0.41
1:A:21:GLU:HG3	1:A:22:ARG:N	2.35	0.41
1:A:147:THR:HG22	1:A:148:ASP:N	2.36	0.41
1:E:230:PRO:O	1:E:231:ASN:CB	2.68	0.41
1:A:288:ASN:O	1:A:288:ASN:CG	2.60	0.41
1:C:110:LYS:HD2	1:C:139:GLU:OE2	2.21	0.41
2:D:2:LEU:HA	2:D:2:LEU:HD23	1.82	0.41
1:E:299:ARG:N	1:E:299:ARG:HD3	2.35	0.41
1:C:93:VAL:O	1:C:94:ASN:HB2	2.20	0.40
2:B:124:ARG:HD3	2:D:134:GLY:CA	2.43	0.40
1:E:152:PHE:HA	1:E:153:PRO:HD3	1.97	0.40
1:A:229:ASN:O	1:A:230:PRO:C	2.59	0.40
1:C:147:THR:HG22	1:C:148:ASP:N	2.36	0.40

Continued on next page...

Continued from previous page...

Atom-1	Atom-2	Interatomic distance (Å)	Clash overlap (Å)
1:C:139:GLU:OE2	1:C:247:ARG:NH1	2.55	0.40

There are no symmetry-related clashes.

5.3 Torsion angles

5.3.1 Protein backbone

In the following table, the Percentiles column shows the percent Ramachandran outliers of the chain as a percentile score with respect to all X-ray entries followed by that with respect to entries of similar resolution.

The Analysed column shows the number of residues for which the backbone conformation was analysed, and the total number of residues.

Mol	Chain	Analysed	Favoured	Allowed	Outliers	Percentiles	
1	A	314/327 (96%)	296 (94%)	18 (6%)	0	100	100
1	C	314/327 (96%)	296 (94%)	18 (6%)	0	100	100
1	E	315/327 (96%)	298 (95%)	16 (5%)	1 (0%)	44	68
2	B	168/177 (95%)	148 (88%)	16 (10%)	4 (2%)	7	12
2	D	169/177 (96%)	150 (89%)	15 (9%)	4 (2%)	7	12
2	F	167/177 (94%)	147 (88%)	16 (10%)	4 (2%)	7	12
All	All	1447/1512 (96%)	1335 (92%)	99 (7%)	13 (1%)	20	38

All (13) Ramachandran outliers are listed below:

Mol	Chain	Res	Type
2	B	57	GLU
2	D	57	GLU
2	F	57	GLU
2	D	119	TYR
2	F	119	TYR
2	B	119	TYR
2	B	169	ASN
2	B	160	SER
2	D	160	SER
2	F	160	SER
2	D	5	ALA

Continued on next page...

Continued from previous page...

Mol	Chain	Res	Type
2	F	5	ALA
1	E	316	PRO

5.3.2 Protein sidechains ⓘ

In the following table, the Percentiles column shows the percent sidechain outliers of the chain as a percentile score with respect to all X-ray entries followed by that with respect to entries of similar resolution.

The Analysed column shows the number of residues for which the sidechain conformation was analysed, and the total number of residues.

Mol	Chain	Analysed	Rotameric	Outliers	Percentiles	
1	A	268/277 (97%)	236 (88%)	32 (12%)	6	10
1	C	268/277 (97%)	238 (89%)	30 (11%)	7	12
1	E	268/277 (97%)	242 (90%)	26 (10%)	9	17
2	B	145/151 (96%)	130 (90%)	15 (10%)	8	15
2	D	146/151 (97%)	131 (90%)	15 (10%)	8	15
2	F	144/151 (95%)	128 (89%)	16 (11%)	7	12
All	All	1239/1284 (96%)	1105 (89%)	134 (11%)	7	13

All (134) residues with a non-rotameric sidechain are listed below:

Mol	Chain	Res	Type
1	A	1	ASP
1	A	5	LEU
1	A	8	HIS
1	A	19	LEU
1	A	20	THR
1	A	21	GLU
1	A	24	VAL
1	A	32	THR
1	A	60	ILE
1	A	65	GLN
1	A	73	SER
1	A	86	VAL
1	A	108	ILE
1	A	122	THR
1	A	126	THR
1	A	130	ARG

Continued on next page...

Continued from previous page...

Mol	Chain	Res	Type
1	A	135	SER
1	A	141	LYS
1	A	144	LEU
1	A	164	LYS
1	A	183	THR
1	A	226	LEU
1	A	228	LEU
1	A	237	SER
1	A	247	ARG
1	A	255	LYS
1	A	262	GLU
1	A	272	ASP
1	A	282	SER
1	A	299	ARG
1	A	313	LYS
1	A	315	VAL
2	B	2	LEU
2	B	11	GLU
2	B	34	THR
2	B	41	THR
2	B	52	LEU
2	B	57	GLU
2	B	65	LEU
2	B	71	THR
2	B	90	GLU
2	B	110	LEU
2	B	129	ASN
2	B	140	ILE
2	B	144	CYS
2	B	148	CYS
2	B	168	GLN
1	C	5	LEU
1	C	8	HIS
1	C	19	LEU
1	C	20	THR
1	C	21	GLU
1	C	24	VAL
1	C	32	THR
1	C	60	ILE
1	C	65	GLN
1	C	86	VAL
1	C	108	ILE

Continued on next page...

Continued from previous page...

Mol	Chain	Res	Type
1	C	122	THR
1	C	126	THR
1	C	130	ARG
1	C	141	LYS
1	C	144	LEU
1	C	164	LYS
1	C	170	ILE
1	C	183	THR
1	C	192	LEU
1	C	228	LEU
1	C	237	SER
1	C	247	ARG
1	C	251	LEU
1	C	255	LYS
1	C	262	GLU
1	C	272	ASP
1	C	299	ARG
1	C	315	VAL
1	C	317	GLU
2	D	2	LEU
2	D	11	GLU
2	D	34	THR
2	D	41	THR
2	D	52	LEU
2	D	57	GLU
2	D	65	LEU
2	D	71	THR
2	D	90	GLU
2	D	110	LEU
2	D	129	ASN
2	D	140	ILE
2	D	144	CYS
2	D	148	CYS
2	D	171	ILE
1	E	1	ASP
1	E	5	LEU
1	E	8	HIS
1	E	19	LEU
1	E	20	THR
1	E	21	GLU
1	E	24	VAL
1	E	32	THR

Continued on next page...

Continued from previous page...

Mol	Chain	Res	Type
1	E	60	ILE
1	E	86	VAL
1	E	108	ILE
1	E	122	THR
1	E	126	THR
1	E	130	ARG
1	E	135	SER
1	E	141	LYS
1	E	144	LEU
1	E	183	THR
1	E	228	LEU
1	E	237	SER
1	E	247	ARG
1	E	255	LYS
1	E	262	GLU
1	E	272	ASP
1	E	299	ARG
1	E	315	VAL
2	F	2	LEU
2	F	11	GLU
2	F	34	THR
2	F	41	THR
2	F	52	LEU
2	F	57	GLU
2	F	65	LEU
2	F	66	ILE
2	F	71	THR
2	F	90	GLU
2	F	110	LEU
2	F	129	ASN
2	F	140	ILE
2	F	144	CYS
2	F	148	CYS
2	F	169	ASN

Some sidechains can be flipped to improve hydrogen bonding and reduce clashes. All (1) such sidechains are listed below:

Mol	Chain	Res	Type
1	E	94	ASN

5.3.3 RNA ⓘ

There are no RNA molecules in this entry.

5.4 Non-standard residues in protein, DNA, RNA chains ⓘ

There are no non-standard protein/DNA/RNA residues in this entry.

5.5 Carbohydrates ⓘ

2 carbohydrates are modelled in this entry.

In the following table, the Counts columns list the number of bonds (or angles) for which Mogul statistics could be retrieved, the number of bonds (or angles) that are observed in the model and the number of bonds (or angles) that are defined in the chemical component dictionary. The Link column lists molecule types, if any, to which the group is linked. The Z score for a bond length (or angle) is the number of standard deviations the observed value is removed from the expected value. A bond length (or angle) with $|Z| > 2$ is considered an outlier worth inspection. RMSZ is the root-mean-square of all Z scores of the bond lengths (or angles).

Mol	Type	Chain	Res	Link	Bond lengths			Bond angles		
					Counts	RMSZ	# $ Z > 2$	Counts	RMSZ	# $ Z > 2$
3	NAG	A	401	1,3	14,14,15	0.63	0	15,19,21	2.36	5 (33%)
3	NAG	A	402	3	14,14,15	0.64	0	15,19,21	1.21	2 (13%)

In the following table, the Chirals column lists the number of chiral outliers, the number of chiral centers analysed, the number of these observed in the model and the number defined in the chemical component dictionary. Similar counts are reported in the Torsion and Rings columns. '-' means no outliers of that kind were identified.

Mol	Type	Chain	Res	Link	Chirals	Torsions	Rings
3	NAG	A	401	1,3	-	0/6/23/26	0/1/1/1
3	NAG	A	402	3	-	0/6/23/26	0/1/1/1

There are no bond length outliers.

All (7) bond angle outliers are listed below:

Mol	Chain	Res	Type	Atoms	Z	Observed(°)	Ideal(°)
3	A	401	NAG	C4-C3-C2	-4.31	104.70	111.02
3	A	401	NAG	C3-C4-C5	-3.67	103.75	110.22
3	A	401	NAG	C2-N2-C7	-2.14	119.82	122.94
3	A	401	NAG	C1-O5-C5	2.07	115.03	112.17
3	A	402	NAG	C1-O5-C5	2.18	115.17	112.17

Continued on next page...

Continued from previous page...

Mol	Chain	Res	Type	Atoms	Z	Observed(°)	Ideal(°)
3	A	402	NAG	C4-C3-C2	2.92	115.30	111.02
3	A	401	NAG	O4-C4-C3	5.71	122.78	110.36

There are no chirality outliers.

There are no torsion outliers.

There are no ring outliers.

No monomer is involved in short contacts.

5.6 Ligand geometry [i](#)

11 ligands are modelled in this entry.

In the following table, the Counts columns list the number of bonds (or angles) for which Mogul statistics could be retrieved, the number of bonds (or angles) that are observed in the model and the number of bonds (or angles) that are defined in the chemical component dictionary. The Link column lists molecule types, if any, to which the group is linked. The Z score for a bond length (or angle) is the number of standard deviations the observed value is removed from the expected value. A bond length (or angle) with $|Z| > 2$ is considered an outlier worth inspection. RMSZ is the root-mean-square of all Z scores of the bond lengths (or angles).

Mol	Type	Chain	Res	Link	Bond lengths			Bond angles		
					Counts	RMSZ	$\# Z > 2$	Counts	RMSZ	$\# Z > 2$
4	NAG	A	403	1	14,14,15	0.55	0	15,19,21	1.04	1 (6%)
4	NAG	A	404	1	14,14,15	0.63	0	15,19,21	1.36	1 (6%)
4	NAG	B	201	2	14,14,15	0.53	0	15,19,21	0.81	0
4	NAG	C	401	1	14,14,15	0.50	0	15,19,21	1.52	3 (20%)
4	NAG	C	402	1	14,14,15	0.73	0	15,19,21	2.02	3 (20%)
4	NAG	C	403	1	14,14,15	1.84	1 (7%)	15,19,21	1.38	2 (13%)
4	NAG	D	201	2	14,14,15	0.57	0	15,19,21	0.88	0
4	NAG	E	401	1	14,14,15	0.56	0	15,19,21	1.49	2 (13%)
4	NAG	E	402	1	14,14,15	0.46	0	15,19,21	1.01	1 (6%)
4	NAG	E	403	1	14,14,15	0.65	0	15,19,21	1.09	1 (6%)
4	NAG	F	201	2	14,14,15	0.59	0	15,19,21	0.93	0

In the following table, the Chirals column lists the number of chiral outliers, the number of chiral centers analysed, the number of these observed in the model and the number defined in the chemical component dictionary. Similar counts are reported in the Torsion and Rings columns. '-' means no outliers of that kind were identified.

Mol	Type	Chain	Res	Link	Chirals	Torsions	Rings
4	NAG	A	403	1	-	0/6/23/26	0/1/1/1
4	NAG	A	404	1	-	0/6/23/26	0/1/1/1
4	NAG	B	201	2	-	0/6/23/26	0/1/1/1
4	NAG	C	401	1	-	0/6/23/26	0/1/1/1
4	NAG	C	402	1	1/1/5/7	0/6/23/26	0/1/1/1
4	NAG	C	403	1	-	0/6/23/26	0/1/1/1
4	NAG	D	201	2	-	0/6/23/26	0/1/1/1
4	NAG	E	401	1	-	0/6/23/26	0/1/1/1
4	NAG	E	402	1	-	0/6/23/26	0/1/1/1
4	NAG	E	403	1	-	0/6/23/26	0/1/1/1
4	NAG	F	201	2	-	0/6/23/26	0/1/1/1

All (1) bond length outliers are listed below:

Mol	Chain	Res	Type	Atoms	Z	Observed(Å)	Ideal(Å)
4	C	403	NAG	O6-C6	6.52	1.69	1.42

All (14) bond angle outliers are listed below:

Mol	Chain	Res	Type	Atoms	Z	Observed(°)	Ideal(°)
4	C	402	NAG	C1-O5-C5	-5.51	104.58	112.17
4	E	401	NAG	C3-C4-C5	-3.70	103.70	110.22
4	C	402	NAG	O5-C1-C2	-3.63	106.42	111.47
4	C	403	NAG	O6-C6-C5	-3.26	100.37	111.34
4	C	401	NAG	C3-C4-C5	-2.97	104.98	110.22
4	E	401	NAG	C2-N2-C7	-2.40	119.44	122.94
4	C	401	NAG	C2-N2-C7	-2.16	119.80	122.94
4	A	403	NAG	C1-O5-C5	2.56	115.70	112.17
4	C	401	NAG	C1-O5-C5	2.86	116.11	112.17
4	E	402	NAG	C1-O5-C5	3.14	116.49	112.17
4	C	403	NAG	C4-C3-C2	3.29	115.84	111.02
4	C	402	NAG	C4-C3-C2	3.43	116.04	111.02
4	E	403	NAG	C4-C3-C2	3.56	116.24	111.02
4	A	404	NAG	O5-C1-C2	4.09	117.17	111.47

All (1) chirality outliers are listed below:

Mol	Chain	Res	Type	Atom
4	C	402	NAG	C1

There are no torsion outliers.

There are no ring outliers.

1 monomer is involved in 3 short contacts:

Mol	Chain	Res	Type	Clashes	Symm-Clashes
4	C	403	NAG	3	0

5.7 Other polymers [i](#)

There are no such residues in this entry.

5.8 Polymer linkage issues [i](#)

There are no chain breaks in this entry.

6 Fit of model and data ⓘ

6.1 Protein, DNA and RNA chains ⓘ

In the following table, the column labelled ‘#RSRZ > 2’ contains the number (and percentage) of RSRZ outliers, followed by percent RSRZ outliers for the chain as percentile scores relative to all X-ray entries and entries of similar resolution. The OWAB column contains the minimum, median, 95th percentile and maximum values of the occupancy-weighted average B-factor per residue. The column labelled ‘Q < 0.9’ lists the number of (and percentage) of residues with an average occupancy less than 0.9.

Mol	Chain	Analysed	<RSRZ>	#RSRZ>2		OWAB(Å²)	Q<0.9	
1	A	316/327 (96%)	-0.03	1 (0%)	93	93	27, 43, 79, 135	2 (0%)
1	C	316/327 (96%)	-0.03	3 (0%)	84	81	27, 43, 85, 146	0
1	E	317/327 (96%)	-0.02	3 (0%)	84	81	26, 43, 84, 143	1 (0%)
2	B	170/177 (96%)	0.71	17 (10%)	8	5	20, 94, 161, 167	1 (0%)
2	D	171/177 (96%)	0.71	16 (9%)	9	6	22, 94, 161, 167	0
2	F	169/177 (95%)	0.77	19 (11%)	6	3	21, 93, 161, 166	0
All	All	1459/1512 (96%)	0.24	59 (4%)	39	32	20, 49, 157, 167	4 (0%)

All (59) RSRZ outliers are listed below:

Mol	Chain	Res	Type	RSRZ
2	F	18	ILE	6.6
2	D	60	ASN	5.8
2	F	33	GLY	4.6
2	B	147	ASP	4.6
2	F	60	ASN	3.8
2	B	60	ASN	3.8
2	F	19	ASP	3.8
2	D	143	LYS	3.7
2	F	143	LYS	3.6
2	B	29	ALA	3.6
2	F	32	GLU	3.4
2	D	33	GLY	3.3
2	D	130	ALA	3.2
2	D	138	PHE	3.0
2	D	168	GLN	3.0
2	D	36	ALA	3.0
2	D	24	PHE	2.9
2	D	110	LEU	2.9
2	F	141	PHE	2.9

Continued on next page...

Continued from previous page...

Mol	Chain	Res	Type	RSRZ
2	B	27	GLN	2.9
2	B	33	GLY	2.8
2	B	168	GLN	2.8
1	A	3	ILE	2.8
2	F	138	PHE	2.7
2	D	32	GLU	2.7
2	D	140	ILE	2.6
2	B	35	ALA	2.6
2	D	58	LYS	2.6
2	F	148	CYS	2.5
2	B	140	ILE	2.5
2	F	11	GLU	2.5
2	F	164	GLU	2.5
2	F	147	ASP	2.5
2	D	11	GLU	2.5
2	F	128	GLU	2.5
2	F	144	CYS	2.5
2	D	18	ILE	2.4
2	F	157	TYR	2.4
2	B	17	LEU	2.4
1	E	5	LEU	2.4
2	B	18	ILE	2.4
2	B	141	PHE	2.4
2	B	110	LEU	2.4
2	F	25	ARG	2.4
2	D	59	THR	2.3
1	C	2	LYS	2.3
2	F	57	GLU	2.2
2	D	35	ALA	2.2
2	B	11	GLU	2.2
1	E	4	CYS	2.2
2	B	5	ALA	2.2
2	B	139	GLU	2.1
1	C	4	CYS	2.1
1	C	5	LEU	2.1
2	B	22	TYR	2.1
2	B	128	GLU	2.1
2	F	23	GLY	2.1
2	F	130	ALA	2.1
1	E	10	VAL	2.0

6.2 Non-standard residues in protein, DNA, RNA chains [i](#)

There are no non-standard protein/DNA/RNA residues in this entry.

6.3 Carbohydrates [i](#)

In the following table, the Atoms column lists the number of modelled atoms in the group and the number defined in the chemical component dictionary. LLDF column lists the quality of electron density of the group with respect to its neighbouring residues in protein, DNA or RNA chains. The B-factors column lists the minimum, median, 95th percentile and maximum values of B factors of atoms in the group. The column labelled 'Q < 0.9' lists the number of atoms with occupancy less than 0.9.

Mol	Type	Chain	Res	Atoms	RSCC	RSR	LLDF	B-factors(Å ²)	Q<0.9
3	NAG	A	402	14/15	0.79	0.23	-	124,148,158,158	0
3	NAG	A	401	14/15	0.89	0.15	-	87,104,117,132	0

6.4 Ligands [i](#)

In the following table, the Atoms column lists the number of modelled atoms in the group and the number defined in the chemical component dictionary. LLDF column lists the quality of electron density of the group with respect to its neighbouring residues in protein, DNA or RNA chains. The B-factors column lists the minimum, median, 95th percentile and maximum values of B factors of atoms in the group. The column labelled 'Q < 0.9' lists the number of atoms with occupancy less than 0.9.

Mol	Type	Chain	Res	Atoms	RSCC	RSR	LLDF	B-factors(Å ²)	Q<0.9
4	NAG	D	201	14/15	0.77	0.20	0.71	77,110,117,122	0
4	NAG	F	201	14/15	0.72	0.18	0.51	93,107,116,121	0
4	NAG	B	201	14/15	0.82	0.16	-0.40	87,106,112,121	0
4	NAG	C	401	14/15	0.90	0.18	-	84,101,111,114	0
4	NAG	E	402	14/15	0.81	0.23	-	121,142,162,163	0
4	NAG	E	401	14/15	0.86	0.14	-	88,99,117,119	0
4	NAG	C	402	14/15	0.76	0.29	-	131,148,152,153	0
4	NAG	C	403	14/15	0.43	0.29	-	123,156,172,172	0
4	NAG	E	403	14/15	0.35	0.33	-	130,162,170,170	0
4	NAG	A	403	14/15	0.73	0.22	-	125,143,153,155	0
4	NAG	A	404	14/15	0.59	0.27	-	129,154,165,166	0

6.5 Other polymers [i](#)

There are no such residues in this entry.