



# Full wwPDB X-ray Structure Validation Report ⓘ

Feb 15, 2017 – 02:58 am GMT

PDB ID : 4DJF  
Title : Crystal structure of folate-bound corrinoid iron-sulfur protein (CFeSP) in complex with its methyltransferase (MeTr), co-crystallized with folate and Ti(III) citrate reductant  
Authors : Kung, Y.; Drennan, C.L.  
Deposited on : 2012-02-01  
Resolution : 3.03 Å(reported)

This is a Full wwPDB X-ray Structure Validation Report for a publicly released PDB entry.

We welcome your comments at [validation@mail.wwpdb.org](mailto:validation@mail.wwpdb.org)

A user guide is available at

<http://wwpdb.org/validation/2016/XrayValidationReportHelp>

with specific help available everywhere you see the ⓘ symbol.

---

The following versions of software and data (see [references ⓘ](#)) were used in the production of this report:

MolProbity : 4.02b-467  
Mogul : 1.7.2 (RC1), CSD as538be (2017)  
Xtriage (Phenix) : 1.9-1692  
EDS : trunk28620  
Percentile statistics : 20161228.v01 (using entries in the PDB archive December 28th 2016)  
Refmac : 5.8.0135  
CCP4 : 6.5.0  
Ideal geometry (proteins) : Engh & Huber (2001)  
Ideal geometry (DNA, RNA) : Parkinson et al. (1996)  
Validation Pipeline (wwPDB-VP) : recalc28949

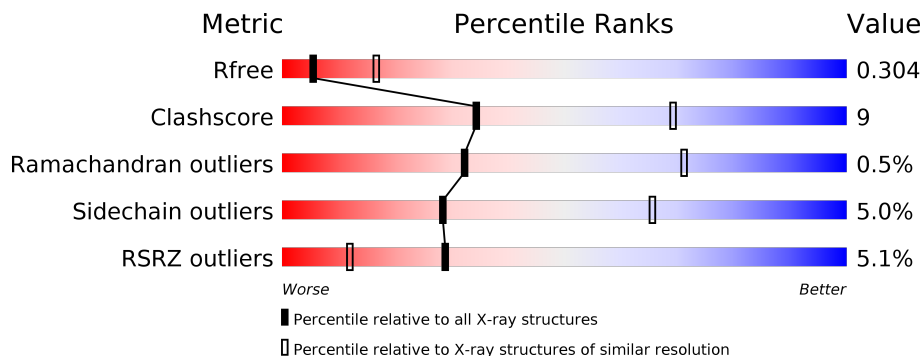
# 1 Overall quality at a glance

The following experimental techniques were used to determine the structure:

*X-RAY DIFFRACTION*

The reported resolution of this entry is 3.03 Å.

Percentile scores (ranging between 0-100) for global validation metrics of the entry are shown in the following graphic. The table shows the number of entries on which the scores are based.



Metric	Whole archive (#Entries)	Similar resolution (#Entries, resolution range(Å))
$R_{free}$	100719	2176 (3.08-3.00)
Clashscore	112137	2542 (3.08-3.00)
Ramachandran outliers	110173	2458 (3.08-3.00)
Sidechain outliers	110143	2461 (3.08-3.00)
RSRZ outliers	101464	2202 (3.08-3.00)

The table below summarises the geometric issues observed across the polymeric chains and their fit to the electron density. The red, orange, yellow and green segments on the lower bar indicate the fraction of residues that contain outliers for  $\geq 3$ , 2, 1 and 0 types of geometric quality criteria. A grey segment represents the fraction of residues that are not modelled. The numeric value for each fraction is indicated below the corresponding segment, with a dot representing fractions  $\leq 5\%$ . The upper red bar (where present) indicates the fraction of residues that have poor fit to the electron density. The numeric value is given above the bar.

Mol	Chain	Length	Quality of chain
1	A	262	<div> <div></div> <div>86%14%</div> </div>
1	B	262	<div> <div>2%</div> <div>83%17%</div> </div>
2	C	446	<div> <div>7%</div> <div>70%25%..</div> </div>
2	E	446	<div> <div>15%</div> <div>78%19%..</div> </div>
3	D	323	<div> <div></div> <div>84%14%. .</div> </div>
3	F	323	<div> <div>%</div> <div>87%12%. .</div> </div>

## 2 Entry composition

There are 8 unique types of molecules in this entry. The entry contains 15397 atoms, of which 0 are hydrogens and 0 are deuteriums.

In the tables below, the ZeroOcc column contains the number of atoms modelled with zero occupancy, the AltConf column contains the number of residues with at least one atom in alternate conformation and the Trace column contains the number of residues modelled with at most 2 atoms.

- Molecule 1 is a protein called 5-methyltetrahydrofolate corrinoid/iron sulfur protein methyltransferase.

Mol	Chain	Residues	Atoms					ZeroOcc	AltConf	Trace
1	A	262	Total	C	N	O	S	0	0	0
			1997	1252	344	384	17			
1	B	262	Total	C	N	O	S	0	0	0
			1997	1252	344	384	17			

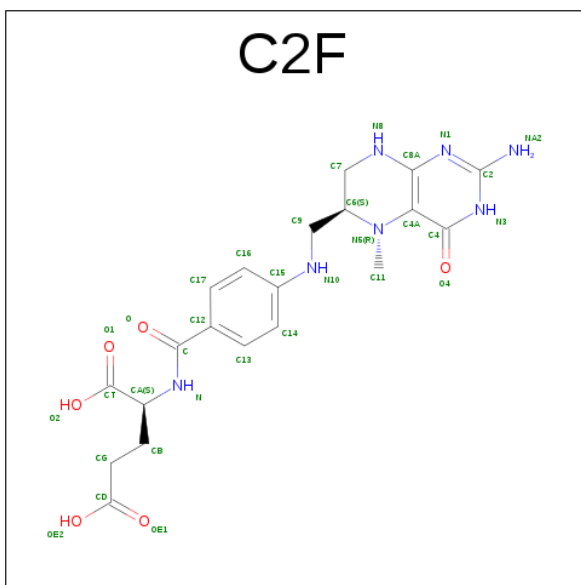
- Molecule 2 is a protein called Corrinoid/iron-sulfur protein large subunit.

Mol	Chain	Residues	Atoms					ZeroOcc	AltConf	Trace
2	C	441	Total	C	N	O	S	0	0	0
			3147	1985	543	609	10			
2	E	441	Total	C	N	O	S	0	0	0
			3053	1921	538	585	9			

- Molecule 3 is a protein called Corrinoid/iron-sulfur protein small subunit.

Mol	Chain	Residues	Atoms					ZeroOcc	AltConf	Trace
3	D	323	Total	C	N	O	S	0	0	0
			2461	1553	426	467	15			
3	F	323	Total	C	N	O	S	0	0	0
			2461	1553	426	467	15			

- Molecule 4 is 5-METHYL-5,6,7,8-TETRAHYDROFOLIC ACID (three-letter code: C2F) (formula: C<sub>20</sub>H<sub>25</sub>N<sub>7</sub>O<sub>6</sub>).

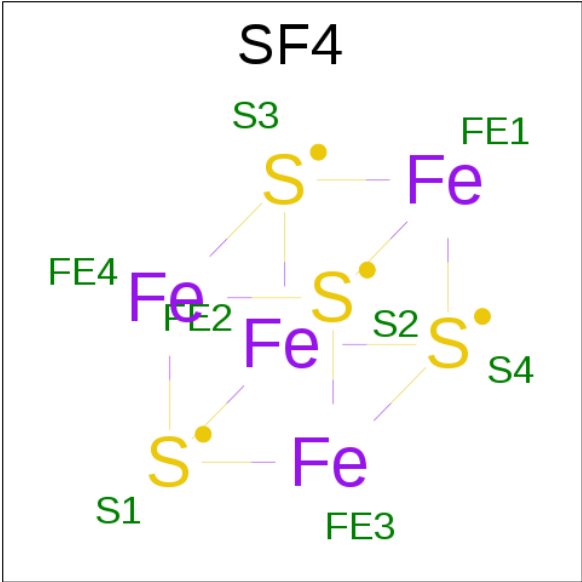


Mol	Chain	Residues	Atoms				ZeroOcc	AltConf
4	A	1	Total	C	N	O	0	0
			32	19	7	6		
4	B	1	Total	C	N	O	0	0
			32	19	7	6		

- Molecule 5 is CALCIUM ION (three-letter code: CA) (formula: Ca).

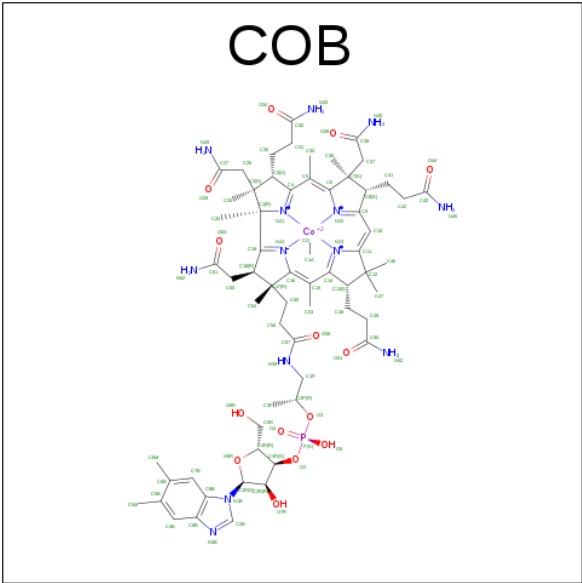
Mol	Chain	Residues	Atoms		ZeroOcc	AltConf
5	B	1	Total	Ca	0	0
			1	1		
5	A	1	Total	Ca	0	0
			1	1		

- Molecule 6 is IRON/SULFUR CLUSTER (three-letter code: SF4) (formula: Fe<sub>4</sub>S<sub>4</sub>).



Mol	Chain	Residues	Atoms			ZeroOcc	AltConf
6	C	1	Total	Fe	S	0	0
			8	4	4		
6	E	1	Total	Fe	S	0	0
			8	4	4		

- Molecule 7 is CO-METHYLCOBALAMIN (three-letter code: COB) (formula: C<sub>63</sub>H<sub>91</sub>CoN<sub>13</sub>O<sub>14</sub>P).



Mol	Chain	Residues	Atoms						ZeroOcc	AltConf
7	C	1	Total	C	Co	N	O	P	0	0
			92	63	1	13	14	1		
7	E	1	Total	C	Co	N	O	P	0	0
			92	63	1	13	14	1		

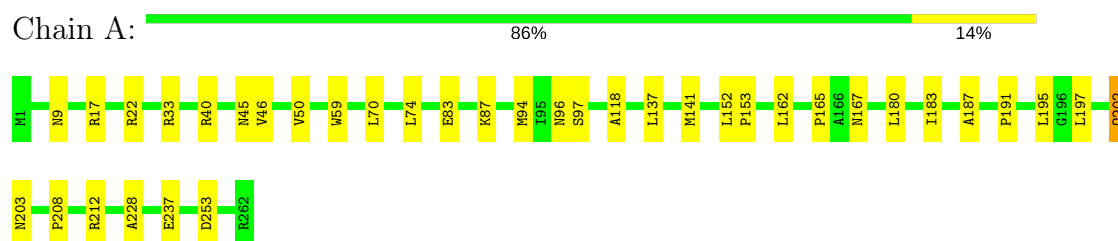
- Molecule 8 is water.

Mol	Chain	Residues	Atoms		ZeroOcc	AltConf
8	A	6	Total 6	O 6	0	0
8	B	4	Total 4	O 4	0	0
8	C	1	Total 1	O 1	0	0
8	D	1	Total 1	O 1	0	0
8	E	1	Total 1	O 1	0	0
8	F	2	Total 2	O 2	0	0

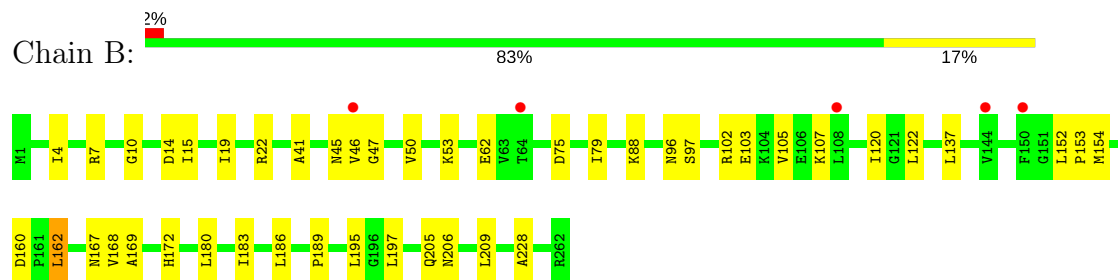
### 3 Residue-property plots

These plots are drawn for all protein, RNA and DNA chains in the entry. The first graphic for a chain summarises the proportions of the various outlier classes displayed in the second graphic. The second graphic shows the sequence view annotated by issues in geometry and electron density. Residues are color-coded according to the number of geometric quality criteria for which they contain at least one outlier: green = 0, yellow = 1, orange = 2 and red = 3 or more. A red dot above a residue indicates a poor fit to the electron density ( $RSRZ > 2$ ). Stretches of 2 or more consecutive residues without any outlier are shown as a green connector. Residues present in the sample, but not in the model, are shown in grey.

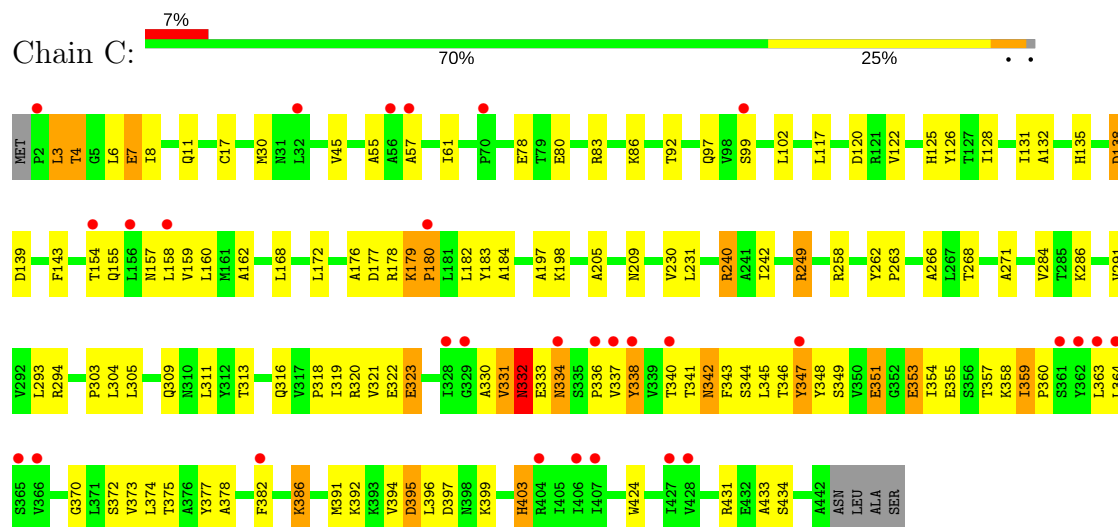
- Molecule 1: 5-methyltetrahydrofolate corrinoid/iron sulfur protein methyltransferase



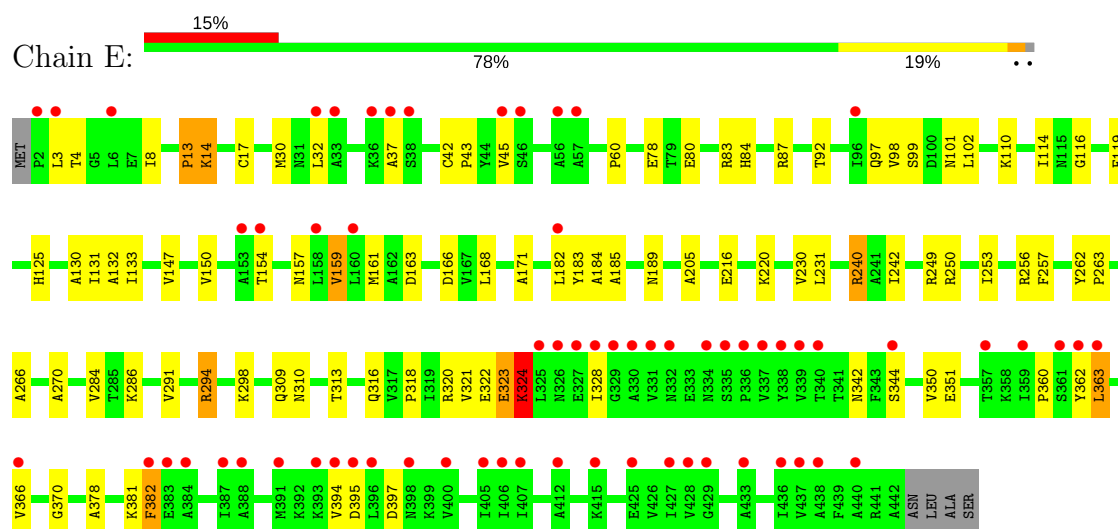
- Molecule 1: 5-methyltetrahydrofolate corrinoid/iron sulfur protein methyltransferase



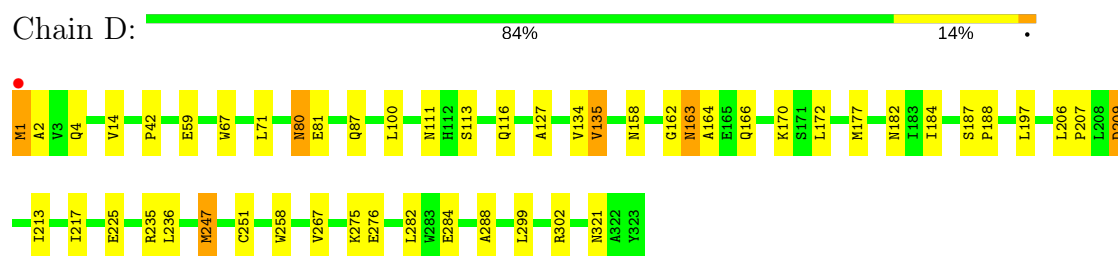
- Molecule 2: Corrinoid/iron-sulfur protein large subunit



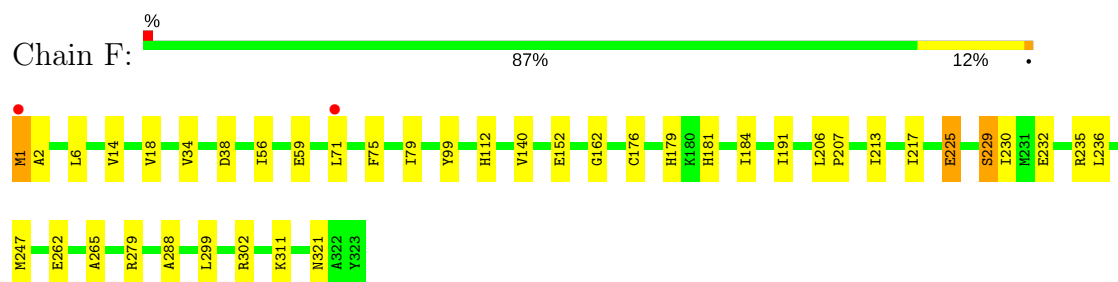
- Molecule 2: Corrinoid/iron-sulfur protein large subunit



- Molecule 3: Corrinoide/iron-sulfur protein small subunit



- Molecule 3: Corrinoide/iron-sulfur protein small subunit



## 4 Data and refinement statistics

Property	Value	Source
Space group	P 21 21 2	Depositor
Cell constants a, b, c, $\alpha$ , $\beta$ , $\gamma$	136.01Å 250.69Å 81.80Å 90.00° 90.00° 90.00°	Depositor
Resolution (Å)	49.75 – 3.03 49.75 – 3.03	Depositor EDS
% Data completeness (in resolution range)	99.2 (49.75-3.03) 99.3 (49.75-3.03)	Depositor EDS
$R_{merge}$	(Not available)	Depositor
$R_{sym}$	(Not available)	Depositor
$\langle I/\sigma(I) \rangle$ <sup>1</sup>	2.01 (at 3.01Å)	Xtriage
Refinement program	PHENIX (phenix.refine: 1.7.2_869)	Depositor
R, $R_{free}$	0.269 , 0.308 0.268 , 0.304	Depositor DCC
$R_{free}$ test set	2791 reflections (5.37%)	DCC
Wilson B-factor (Å <sup>2</sup> )	84.5	Xtriage
Anisotropy	0.695	Xtriage
Bulk solvent $k_{sol}$ (e/Å <sup>3</sup> ), $B_{sol}$ (Å <sup>2</sup> )	0.29 , 78.2	EDS
L-test for twinning <sup>2</sup>	$\langle  L  \rangle = 0.49$ , $\langle L^2 \rangle = 0.32$	Xtriage
Estimated twinning fraction	No twinning to report.	Xtriage
$F_o, F_c$ correlation	0.92	EDS
Total number of atoms	15397	wwPDB-VP
Average B, all atoms (Å <sup>2</sup> )	110.0	wwPDB-VP

Xtriage's analysis on translational NCS is as follows: *The largest off-origin peak in the Patterson function is 2.89% of the height of the origin peak. No significant pseudotranslation is detected.*

<sup>1</sup>Intensities estimated from amplitudes.

<sup>2</sup>Theoretical values of  $\langle |L| \rangle$ ,  $\langle L^2 \rangle$  for acentric reflections are 0.5, 0.333 respectively for untwinned datasets, and 0.375, 0.2 for perfectly twinned datasets.

## 5 Model quality

### 5.1 Standard geometry

Bond lengths and bond angles in the following residue types are not validated in this section: SF4, COB, C2F, CA

The Z score for a bond length (or angle) is the number of standard deviations the observed value is removed from the expected value. A bond length (or angle) with  $|Z| > 5$  is considered an outlier worth inspection. RMSZ is the root-mean-square of all Z scores of the bond lengths (or angles).

Mol	Chain	Bond lengths		Bond angles	
		RMSZ	# Z  >5	RMSZ	# Z  >5
1	A	0.20	0/2023	0.37	0/2738
1	B	0.21	0/2023	0.38	0/2738
2	C	0.26	0/3204	0.45	0/4380
2	E	0.29	0/3104	0.48	1/4248 (0.0%)
3	D	0.19	0/2507	0.37	0/3408
3	F	0.19	0/2507	0.36	0/3408
All	All	0.23	0/15368	0.41	1/20920 (0.0%)

There are no bond length outliers.

All (1) bond angle outliers are listed below:

Mol	Chain	Res	Type	Atoms	Z	Observed(°)	Ideal(°)
2	E	397	ASP	CB-CG-OD2	5.12	122.91	118.30

There are no chirality outliers.

There are no planarity outliers.

### 5.2 Too-close contacts

In the following table, the Non-H and H(model) columns list the number of non-hydrogen atoms and hydrogen atoms in the chain respectively. The H(added) column lists the number of hydrogen atoms added and optimized by MolProbity. The Clashes column lists the number of clashes within the asymmetric unit, whereas Symm-Clashes lists symmetry related clashes.

Mol	Chain	Non-H	H(model)	H(added)	Clashes	Symm-Clashes
1	A	1997	0	2039	19	0
1	B	1997	0	2039	25	0
2	C	3147	0	2930	115	0
2	E	3053	0	2789	64	0

*Continued on next page...*

*Continued from previous page...*

Mol	Chain	Non-H	H(model)	H(added)	Clashes	Symm-Clashes
3	D	2461	0	2461	27	0
3	F	2461	0	2461	22	0
4	A	32	0	20	1	0
4	B	32	0	20	1	0
5	A	1	0	0	0	0
5	B	1	0	0	0	0
6	C	8	0	0	0	0
6	E	8	0	0	1	0
7	C	92	0	87	17	0
7	E	92	0	87	14	0
8	A	6	0	0	0	0
8	B	4	0	0	0	0
8	C	1	0	0	0	0
8	D	1	0	0	0	0
8	E	1	0	0	0	0
8	F	2	0	0	0	0
All	All	15397	0	14933	287	0

The all-atom clashscore is defined as the number of clashes found per 1000 atoms (including hydrogen atoms). The all-atom clashscore for this structure is 9.

All (287) close contacts within the same asymmetric unit are listed below, sorted by their clash magnitude.

Atom-1	Atom-2	Interatomic distance (Å)	Clash overlap (Å)
2:C:386:LYS:HD3	2:C:386:LYS:O	1.39	1.19
2:C:353:GLU:OE1	2:C:353:GLU:HA	1.43	1.10
2:C:336:PRO:HB2	2:C:338:TYR:HE1	1.15	1.08
2:C:336:PRO:HB2	2:C:338:TYR:CE1	1.90	1.05
2:C:386:LYS:C	2:C:386:LYS:HD3	1.75	1.01
7:E:502:COB:H621	7:E:502:COB:H541	1.26	1.00
2:C:331:VAL:H	2:C:360:PRO:HB3	1.24	1.00
7:C:502:COB:H621	7:C:502:COB:H541	1.27	0.97
2:E:323:GLU:O	2:E:324:LYS:HG3	1.66	0.93
2:C:323:GLU:HG2	2:C:323:GLU:O	1.76	0.86
2:C:343:PHE:CE2	2:C:345:LEU:HB3	2.15	0.81
2:C:347:TYR:HD1	2:C:347:TYR:C	1.82	0.81
2:E:350:VAL:HG12	2:E:363:LEU:HD11	1.62	0.81
2:E:328:ILE:O	2:E:360:PRO:HA	1.80	0.80
2:C:359:ILE:N	2:C:359:ILE:HD13	1.97	0.79
2:C:359:ILE:N	2:C:359:ILE:CD1	2.45	0.79
2:C:336:PRO:CB	2:C:338:TYR:HE1	1.97	0.74

*Continued on next page...*

*Continued from previous page...*

Atom-1	Atom-2	Interatomic distance (Å)	Clash overlap (Å)
2:C:347:TYR:C	2:C:347:TYR:CD1	2.57	0.74
2:E:316:GLN:O	2:E:318:PRO:HD3	1.87	0.73
2:E:266:ALA:HB3	2:E:291:VAL:HG12	1.72	0.72
2:E:323:GLU:O	2:E:324:LYS:CG	2.37	0.71
7:E:502:COB:H362	7:E:502:COB:H351	1.74	0.70
7:C:502:COB:H362	7:C:502:COB:H351	1.74	0.70
2:C:321:VAL:HG23	2:C:344:SER:HA	1.73	0.70
2:C:386:LYS:CD	2:C:386:LYS:O	2.30	0.69
2:C:395:ASP:O	2:C:395:ASP:CG	2.30	0.69
2:E:350:VAL:HG12	2:E:363:LEU:CD1	2.23	0.69
2:C:338:TYR:HD1	2:C:338:TYR:N	1.92	0.68
2:C:331:VAL:N	2:C:360:PRO:HB3	2.05	0.67
1:B:79:ILE:HG13	1:B:107:LYS:HD3	1.77	0.67
2:C:338:TYR:CD1	2:C:338:TYR:N	2.63	0.65
2:C:340:THR:HG23	2:C:341:THR:N	2.11	0.65
2:C:331:VAL:O	2:C:332:ASN:CB	2.45	0.64
2:C:331:VAL:O	2:C:332:ASN:HB3	1.98	0.64
2:C:372:SER:HB2	7:C:502:COB:O4	1.99	0.63
2:C:4:THR:HG23	2:C:7:GLU:HB2	1.80	0.63
2:C:330:ALA:HB3	2:C:360:PRO:CG	2.28	0.63
2:C:375:THR:HG21	7:C:502:COB:H482	1.81	0.63
2:C:92:THR:HG21	2:C:284:VAL:HG12	1.80	0.62
2:C:338:TYR:HB3	7:C:502:COB:HM52	1.82	0.62
3:D:164:ALA:HB2	3:D:172:LEU:HD23	1.81	0.62
2:C:353:GLU:CA	2:C:353:GLU:OE1	2.30	0.62
2:C:347:TYR:HE1	2:C:351:GLU:HB2	1.64	0.62
2:E:321:VAL:HG23	2:E:344:SER:HA	1.81	0.62
2:C:386:LYS:C	2:C:386:LYS:CD	2.60	0.61
2:C:319:ILE:HG22	2:C:344:SER:CB	2.30	0.61
2:E:350:VAL:CG1	2:E:363:LEU:CD1	2.79	0.61
2:C:342:ASN:ND2	2:C:370:GLY:HA2	2.16	0.60
2:C:323:GLU:O	2:C:323:GLU:CG	2.45	0.60
2:C:331:VAL:H	2:C:360:PRO:CB	2.04	0.60
2:E:92:THR:HG21	2:E:284:VAL:HG12	1.83	0.60
7:C:502:COB:N62	7:C:502:COB:H541	2.09	0.60
3:D:206:LEU:HD12	3:D:207:PRO:HD2	1.84	0.60
2:C:230:VAL:HG12	2:C:263:PRO:HG2	1.82	0.59
7:C:502:COB:C54	7:C:502:COB:H621	2.09	0.59
2:E:116:GLY:O	2:E:298:LYS:NZ	2.35	0.59
2:E:230:VAL:HG12	2:E:263:PRO:HG2	1.84	0.59
2:C:347:TYR:HD1	2:C:347:TYR:O	1.85	0.59

*Continued on next page...*

*Continued from previous page...*

Atom-1	Atom-2	Interatomic distance (Å)	Clash overlap (Å)
2:C:266:ALA:HB3	2:C:291:VAL:HG12	1.85	0.59
2:C:378:ALA:HB2	7:C:502:COB:H302	1.85	0.59
1:B:152:LEU:HD12	1:B:153:PRO:HD2	1.83	0.59
2:C:342:ASN:ND2	2:C:342:ASN:C	2.55	0.59
2:C:341:THR:HG21	2:C:373:VAL:HA	1.84	0.59
3:D:247:MET:SD	3:D:247:MET:N	2.76	0.59
7:C:502:COB:H491	7:C:502:COB:H533	1.85	0.58
3:D:288:ALA:HB1	3:D:299:LEU:HD13	1.84	0.57
3:D:217:ILE:HD13	3:D:251:CYS:HB3	1.86	0.57
2:C:391:MET:HB3	2:C:424:TRP:CZ3	2.39	0.57
2:C:231:LEU:HD13	2:C:262:TYR:HB2	1.86	0.57
2:C:320:ARG:HB2	2:C:342:ASN:ND2	2.20	0.57
1:A:83:GLU:HG2	1:A:87:LYS:HE3	1.86	0.57
2:C:99:SER:HB3	2:C:102:LEU:HD13	1.87	0.57
7:E:502:COB:H531	7:E:502:COB:H543	1.86	0.56
1:B:160:ASP:OD2	4:B:300:C2F:NA2	2.34	0.56
2:C:348:TYR:HA	2:C:351:GLU:HB3	1.86	0.56
2:E:231:LEU:HD13	2:E:262:TYR:HB2	1.87	0.56
7:E:502:COB:C54	7:E:502:COB:H621	2.10	0.56
1:B:19:ILE:O	1:B:22:ARG:NH1	2.33	0.55
2:E:131:ILE:HD12	2:E:154:THR:HG21	1.88	0.55
7:E:502:COB:N62	7:E:502:COB:H541	2.10	0.55
3:F:59:GLU:HA	3:F:99:TYR:HB3	1.89	0.55
3:D:209:ASP:OD1	3:D:209:ASP:N	2.36	0.55
2:C:332:ASN:O	2:C:333:GLU:CB	2.55	0.55
1:A:94:MET:HG2	1:A:118:ALA:HB3	1.89	0.54
2:C:131:ILE:HD12	2:C:154:THR:HG21	1.89	0.54
1:B:75:ASP:OD1	1:B:96:ASN:ND2	2.40	0.54
2:C:330:ALA:HB3	2:C:360:PRO:HG2	1.90	0.54
2:E:316:GLN:NE2	2:E:316:GLN:HA	2.22	0.54
1:A:165:PRO:HG3	1:A:202:GLN:HB3	1.89	0.53
2:C:358:LYS:C	2:C:359:ILE:CD1	2.76	0.53
7:C:502:COB:H203	7:C:502:COB:H301	1.91	0.53
2:C:353:GLU:HG3	2:C:434:SER:HA	1.91	0.53
2:C:357:THR:O	2:C:358:LYS:CB	2.57	0.53
2:C:83:ARG:HD2	2:C:311:LEU:HD12	1.90	0.53
2:C:394:VAL:O	2:C:395:ASP:OD1	2.26	0.53
3:D:258:TRP:NE1	3:D:284:GLU:OE1	2.40	0.53
7:E:502:COB:H533	7:E:502:COB:H491	1.91	0.53
3:F:262:GLU:N	3:F:262:GLU:OE1	2.40	0.52
2:E:119:PHE:O	2:E:125:HIS:ND1	2.42	0.52

*Continued on next page...*

*Continued from previous page...*

Atom-1	Atom-2	Interatomic distance (Å)	Clash overlap (Å)
2:E:99:SER:OG	2:E:101:ASN:OD1	2.25	0.52
2:C:157:ASN:HA	2:C:179:LYS:HG3	1.90	0.52
2:C:155:GLN:OE1	2:C:155:GLN:N	2.43	0.52
1:A:197:LEU:HB3	1:A:228:ALA:HB2	1.92	0.52
1:B:122:LEU:HD22	1:B:162:LEU:HD21	1.92	0.52
3:F:18:VAL:HG22	3:F:34:VAL:HG22	1.91	0.51
3:F:162:GLY:HA2	3:F:184:ILE:HB	1.93	0.51
3:D:80:ASN:HD22	3:D:80:ASN:H	1.58	0.51
2:C:342:ASN:C	2:C:342:ASN:HD22	2.13	0.51
2:C:61:ILE:HB	2:C:78:GLU:H	1.76	0.51
3:D:80:ASN:ND2	3:D:81:GLU:OE1	2.44	0.51
2:E:310:ASN:O	2:E:313:THR:OG1	2.28	0.51
1:A:9:ASN:HA	1:A:45:ASN:HB3	1.93	0.51
1:B:45:ASN:ND2	1:B:75:ASP:OD2	2.43	0.51
2:C:80:GLU:HG3	2:C:86:LYS:HB3	1.92	0.51
3:D:59:GLU:OE1	3:D:302:ARG:NE	2.35	0.50
2:C:78:GLU:HG2	2:C:249:ARG:NH2	2.27	0.50
7:E:502:COB:N62	7:E:502:COB:H551	2.27	0.50
3:F:75:PHE:O	3:F:79:ILE:N	2.44	0.50
2:E:322:GLU:HG2	2:E:324:LYS:HD3	1.94	0.50
2:E:240:ARG:NH2	3:F:321:ASN:O	2.41	0.50
2:C:122:VAL:HG23	2:C:348:TYR:CE2	2.47	0.50
3:F:71:LEU:HD21	3:F:302:ARG:HD3	1.94	0.50
2:C:342:ASN:HD21	2:C:370:GLY:HA2	1.75	0.50
2:C:396:LEU:O	2:C:399:LYS:N	2.45	0.50
3:D:163:ASN:H	3:D:184:ILE:HB	1.76	0.50
2:C:358:LYS:C	2:C:359:ILE:HD13	2.33	0.49
3:F:288:ALA:HB1	3:F:299:LEU:HD13	1.94	0.49
2:C:55:ALA:HA	2:C:258:ARG:HH21	1.77	0.49
2:C:183:TYR:CD2	2:C:184:ALA:HB2	2.47	0.49
3:D:1:MET:SD	3:D:2:ALA:N	2.85	0.49
2:C:321:VAL:HG12	2:C:322:GLU:N	2.26	0.49
3:F:206:LEU:HD12	3:F:207:PRO:HD2	1.95	0.49
2:C:138:ASP:N	2:C:138:ASP:OD1	2.45	0.49
3:F:1:MET:SD	3:F:2:ALA:N	2.86	0.49
2:C:135:HIS:HD2	2:C:143:PHE:HB2	1.78	0.49
2:C:353:GLU:HG3	2:C:433:ALA:O	2.12	0.49
3:D:113:SER:HB3	3:D:116:GLN:HG3	1.94	0.49
1:B:96:ASN:HB2	1:B:120:ILE:HD12	1.94	0.49
2:C:242:ILE:HG23	2:C:286:LYS:HG3	1.93	0.49
2:E:161:MET:HG2	2:E:183:TYR:HB3	1.95	0.49

*Continued on next page...*

*Continued from previous page...*

Atom-1	Atom-2	Interatomic distance (Å)	Clash overlap (Å)
1:B:46:VAL:HB	1:B:50:VAL:HG11	1.94	0.48
2:C:303:PRO:HG2	3:D:282:LEU:HB3	1.95	0.48
2:C:395:ASP:O	2:C:395:ASP:OD2	2.30	0.48
7:E:502:COB:H252	7:E:502:COB:H601	1.95	0.48
1:A:187:ALA:HB3	1:A:191:PRO:HD3	1.95	0.48
2:C:321:VAL:HG12	2:C:322:GLU:H	1.79	0.48
2:E:98:VAL:HG12	2:E:110:LYS:HD3	1.95	0.48
7:C:502:COB:H252	7:C:502:COB:H601	1.95	0.48
2:E:270:ALA:O	2:E:294:ARG:NH2	2.43	0.48
7:C:502:COB:N62	7:C:502:COB:H551	2.28	0.48
2:C:3:LEU:HD12	2:C:8:ILE:HG13	1.95	0.48
2:C:334:ASN:O	2:C:334:ASN:ND2	2.42	0.48
2:C:97:GLN:HA	2:C:132:ALA:HB3	1.96	0.48
7:C:502:COB:H543	7:C:502:COB:H531	1.94	0.48
3:F:247:MET:N	3:F:247:MET:SD	2.87	0.48
1:A:96:ASN:OD1	4:A:300:C2F:NA2	2.39	0.47
2:E:366:VAL:CB	2:E:382:PHE:HE1	2.27	0.47
1:B:167:ASN:OD1	1:B:168:VAL:N	2.45	0.47
1:B:169:ALA:HB1	1:B:172:HIS:CD2	2.49	0.47
2:E:250:ARG:HD3	3:F:6:LEU:HD22	1.95	0.47
2:E:80:GLU:O	2:E:249:ARG:NH2	2.43	0.47
3:D:213:ILE:HG13	3:D:247:MET:HB2	1.96	0.47
3:D:42:PRO:HD3	3:D:235:ARG:HG2	1.97	0.47
2:E:183:TYR:HA	2:E:184:ALA:HA	1.67	0.47
2:E:60:PRO:HB3	2:E:253:ILE:HA	1.95	0.47
1:A:40:ARG:HA	1:A:70:LEU:HD22	1.95	0.47
1:B:197:LEU:HB3	1:B:228:ALA:HB2	1.97	0.47
2:C:120:ASP:OD1	2:C:125:HIS:ND1	2.43	0.47
2:E:320:ARG:HG2	2:E:370:GLY:HA3	1.96	0.47
7:E:502:COB:C53	7:E:502:COB:H543	2.44	0.47
2:C:122:VAL:HG23	2:C:348:TYR:HE2	1.80	0.47
1:B:10:GLY:HA3	1:B:47:GLY:HA3	1.97	0.46
2:C:358:LYS:C	2:C:359:ILE:HD12	2.36	0.46
2:C:183:TYR:HA	2:C:205:ALA:HB3	1.97	0.46
2:C:332:ASN:C	2:C:332:ASN:OD1	2.52	0.46
2:C:354:ILE:O	2:C:355:GLU:C	2.52	0.46
2:E:166:ASP:N	2:E:166:ASP:OD1	2.48	0.46
2:E:168:LEU:HD21	2:E:182:LEU:HD22	1.98	0.46
2:C:117:LEU:HB2	2:C:128:ILE:HD13	1.97	0.46
2:E:362:TYR:O	2:E:363:LEU:HD22	2.15	0.46
1:B:7:ARG:NH2	1:B:14:ASP:OD2	2.49	0.46

*Continued on next page...*

*Continued from previous page...*

Atom-1	Atom-2	Interatomic distance (Å)	Clash overlap (Å)
2:C:271:ALA:HA	2:C:294:ARG:HH22	1.81	0.46
2:E:99:SER:HB3	2:E:102:LEU:HD13	1.98	0.46
2:C:160:LEU:HB3	2:C:168:LEU:HD11	1.97	0.46
2:C:268:THR:HG21	2:C:293:LEU:HD23	1.98	0.46
7:C:502:COB:H531	7:C:502:COB:H552	1.98	0.46
3:D:166:GLN:HA	3:D:197:LEU:HD13	1.98	0.46
3:F:176:CYS:HA	3:F:181:HIS:HB2	1.97	0.46
1:A:96:ASN:HA	1:A:97:SER:HA	1.56	0.46
2:C:135:HIS:CD2	2:C:143:PHE:HB2	2.51	0.45
2:E:183:TYR:HA	2:E:205:ALA:HB3	1.98	0.45
1:B:4:ILE:HG12	1:B:41:ALA:HB3	1.98	0.45
3:D:187:SER:HA	3:D:188:PRO:HD3	1.82	0.45
2:E:323:GLU:O	2:E:324:LYS:CB	2.64	0.45
1:A:152:LEU:HD12	1:A:153:PRO:HD2	1.97	0.45
2:C:178:ARG:HE	2:C:179:LYS:HE2	1.82	0.45
3:D:135:VAL:HG12	3:D:162:GLY:HA3	1.98	0.45
1:A:137:LEU:HB3	2:C:30:MET:HE1	1.99	0.45
2:C:342:ASN:HD21	2:C:370:GLY:CA	2.30	0.45
2:C:162:ALA:HB3	2:C:168:LEU:HD13	1.98	0.45
2:E:362:TYR:C	2:E:363:LEU:HD23	2.37	0.45
2:E:320:ARG:HB3	2:E:342:ASN:ND2	2.32	0.45
2:C:172:LEU:O	2:C:176:ALA:N	2.50	0.45
3:F:265:ALA:O	3:F:279:ARG:NH2	2.42	0.45
3:D:158:ASN:OD1	3:D:182:ASN:ND2	2.50	0.44
2:E:309:GLN:O	2:E:313:THR:HG23	2.17	0.44
3:D:87:GLN:HG3	3:D:127:ALA:HB1	1.99	0.44
3:D:100:LEU:HB3	3:D:134:VAL:HG22	2.00	0.44
2:E:8:ILE:HG21	2:E:32:LEU:HD12	1.99	0.44
3:F:56:ILE:HD12	3:F:311:LYS:HG3	1.99	0.44
2:C:347:TYR:CE1	2:C:351:GLU:HB2	2.49	0.44
2:E:130:ALA:HB2	2:E:157:ASN:HB2	1.99	0.44
2:E:324:LYS:HB2	2:E:324:LYS:HE3	1.49	0.44
2:E:363:LEU:CD2	2:E:363:LEU:N	2.80	0.44
3:F:262:GLU:O	3:F:279:ARG:NH1	2.51	0.44
1:A:237:GLU:HB3	1:B:209:LEU:HD21	1.99	0.44
3:F:191:ILE:HB	3:F:230:ILE:HG23	2.00	0.44
3:D:177:MET:HG2	3:D:206:LEU:HD13	1.99	0.43
2:E:363:LEU:N	2:E:363:LEU:HD23	2.33	0.43
3:D:111:ASN:O	3:D:111:ASN:ND2	2.51	0.43
3:F:213:ILE:HG13	3:F:247:MET:HB2	1.99	0.43
2:E:133:ILE:HD11	2:E:150:VAL:HG11	2.01	0.43

*Continued on next page...*

*Continued from previous page...*

Atom-1	Atom-2	Interatomic distance (Å)	Clash overlap (Å)
2:E:183:TYR:CG	2:E:184:ALA:HB2	2.53	0.43
2:C:172:LEU:HG	2:C:176:ALA:HB2	1.99	0.43
2:C:337:VAL:C	2:C:338:TYR:HD1	2.22	0.43
2:C:57:ALA:HB1	2:E:37:ALA:HA	1.99	0.43
3:F:225:GLU:H	3:F:225:GLU:HG3	1.57	0.43
1:B:180:LEU:HD11	1:B:195:LEU:HD11	2.00	0.43
2:C:182:LEU:HD12	2:C:197:ALA:HB2	2.01	0.43
2:C:431:ARG:O	7:C:502:COB:H1R	2.18	0.43
7:E:502:COB:H301	7:E:502:COB:H203	2.00	0.43
7:E:502:COB:N29	7:E:502:COB:H3	2.34	0.43
2:C:309:GLN:O	2:C:313:THR:HG23	2.18	0.43
2:E:378:ALA:HB2	7:E:502:COB:H302	2.01	0.43
1:B:96:ASN:HA	1:B:97:SER:HA	1.63	0.43
2:C:373:VAL:O	2:C:377:TYR:N	2.41	0.43
2:C:183:TYR:CG	2:C:184:ALA:HB2	2.54	0.43
2:E:350:VAL:CG1	2:E:363:LEU:HD11	2.38	0.43
2:C:347:TYR:CD1	2:C:347:TYR:O	2.70	0.42
7:E:502:COB:H291	7:E:502:COB:H3	1.84	0.42
3:F:152:GLU:HG2	3:F:179:HIS:CE1	2.54	0.42
2:C:240:ARG:NH2	3:D:321:ASN:O	2.51	0.42
2:E:42:CYS:HA	2:E:43:PRO:HD3	1.81	0.42
2:E:242:ILE:HG12	2:E:286:LYS:HG3	2.02	0.42
1:A:167:ASN:HD21	1:A:203:ASN:HB3	1.84	0.42
2:C:179:LYS:N	2:C:180:PRO:HD2	2.35	0.42
1:B:154:MET:HG2	1:B:189:PRO:O	2.19	0.42
2:E:110:LYS:O	2:E:114:ILE:HG13	2.19	0.42
2:E:84:HIS:HB3	3:F:229:SER:OG	2.20	0.42
1:A:208:PRO:O	1:A:212:ARG:HG2	2.20	0.42
2:E:216:GLU:O	2:E:220:LYS:HG2	2.20	0.42
2:C:286:LYS:HD3	2:C:286:LYS:HA	1.90	0.41
3:D:267:VAL:HB	3:D:275:LYS:HA	2.01	0.41
2:E:163:ASP:O	2:E:189:ASN:ND2	2.53	0.41
2:E:362:TYR:C	2:E:363:LEU:CD2	2.88	0.41
2:C:316:GLN:O	2:C:318:PRO:HD3	2.20	0.41
2:C:374:LEU:HD23	2:C:374:LEU:HA	1.86	0.41
2:C:397:ASP:O	2:C:403:HIS:CE1	2.73	0.41
1:A:74:LEU:HD22	1:A:74:LEU:H	1.86	0.41
2:C:158:LEU:HB2	2:C:180:PRO:HG3	2.02	0.41
2:E:147:VAL:HG11	2:E:171:ALA:HB1	2.01	0.41
1:B:183:ILE:O	1:B:186:LEU:HG	2.20	0.41
2:C:183:TYR:HA	2:C:184:ALA:HA	1.69	0.41

*Continued on next page...*

Continued from previous page...

Atom-1	Atom-2	Interatomic distance (Å)	Clash overlap (Å)
3:D:67:TRP:HB3	3:D:71:LEU:HD23	2.03	0.41
1:A:46:VAL:HB	1:A:50:VAL:HG11	2.01	0.41
1:B:137:LEU:HD23	2:E:30:MET:HE1	2.03	0.41
7:C:502:COB:H543	7:C:502:COB:C53	2.50	0.41
2:E:394:VAL:O	2:E:395:ASP:CB	2.69	0.41
7:C:502:COB:H8	7:C:502:COB:O39	2.20	0.41
2:C:318:PRO:HB3	2:C:343:PHE:CE1	2.56	0.41
1:A:22:ARG:HD2	1:A:59:TRP:CD1	2.56	0.41
1:B:14:ASP:OD1	1:B:15:ILE:N	2.53	0.41
2:C:139:ASP:OD1	2:C:139:ASP:N	2.54	0.41
2:C:198:LYS:HB2	2:C:198:LYS:HE3	1.95	0.41
2:E:185:ALA:N	2:E:205:ALA:O	2.46	0.41
2:E:132:ALA:HA	2:E:159:VAL:HG13	2.02	0.41
2:E:97:GLN:HA	2:E:132:ALA:HB3	2.02	0.41
2:C:126:TYR:HB3	2:C:305:LEU:HD23	2.04	0.40
7:E:502:COB:H531	7:E:502:COB:H552	2.02	0.40
1:A:180:LEU:HD11	1:A:195:LEU:HD11	2.04	0.40
1:B:102:ARG:HA	1:B:105:VAL:HB	2.04	0.40
2:E:3:LEU:HA	2:E:3:LEU:HD12	1.89	0.40
2:E:17:CYS:N	6:E:501:SF4:S3	2.93	0.40
1:A:253:ASP:HB3	1:B:205:GLN:NE2	2.36	0.40
1:B:62:GLU:HG3	1:B:88:LYS:HD3	2.02	0.40
2:E:13:PRO:HB2	2:E:14:LYS:H	1.59	0.40
3:F:232:GLU:O	3:F:236:LEU:HB2	2.22	0.40

There are no symmetry-related clashes.

## 5.3 Torsion angles [i](#)

### 5.3.1 Protein backbone [i](#)

In the following table, the Percentiles column shows the percent Ramachandran outliers of the chain as a percentile score with respect to all X-ray entries followed by that with respect to entries of similar resolution.

The Analysed column shows the number of residues for which the backbone conformation was analysed, and the total number of residues.

Mol	Chain	Analysed	Favoured	Allowed	Outliers	Percentiles
1	A	260/262 (99%)	251 (96%)	8 (3%)	1 (0%)	38 75

Continued on next page...

Continued from previous page...

Mol	Chain	Analysed	Favoured	Allowed	Outliers	Percentiles	
1	B	260/262 (99%)	250 (96%)	9 (4%)	1 (0%)	38	75
2	C	439/446 (98%)	421 (96%)	14 (3%)	4 (1%)	20	58
2	E	439/446 (98%)	420 (96%)	15 (3%)	4 (1%)	20	58
3	D	321/323 (99%)	302 (94%)	18 (6%)	1 (0%)	44	79
3	F	321/323 (99%)	310 (97%)	11 (3%)	0	100	100
All	All	2040/2062 (99%)	1954 (96%)	75 (4%)	11 (0%)	32	71

All (11) Ramachandran outliers are listed below:

Mol	Chain	Res	Type
2	C	45	VAL
2	C	180	PRO
2	E	13	PRO
2	E	45	VAL
2	E	324	LYS
1	A	162	LEU
2	C	332	ASN
2	C	331	VAL
2	E	14	LYS
1	B	162	LEU
3	D	163	ASN

### 5.3.2 Protein sidechains ⓘ

In the following table, the Percentiles column shows the percent sidechain outliers of the chain as a percentile score with respect to all X-ray entries followed by that with respect to entries of similar resolution.

The Analysed column shows the number of residues for which the sidechain conformation was analysed, and the total number of residues.

Mol	Chain	Analysed	Rotameric	Outliers	Percentiles	
1	A	214/214 (100%)	209 (98%)	5 (2%)	56	84
1	B	214/214 (100%)	211 (99%)	3 (1%)	71	91
2	C	286/356 (80%)	254 (89%)	32 (11%)	7	26
2	E	261/356 (73%)	246 (94%)	15 (6%)	24	60
3	D	261/261 (100%)	250 (96%)	11 (4%)	34	71
3	F	261/261 (100%)	252 (97%)	9 (3%)	42	77

Continued on next page...

*Continued from previous page...*

Mol	Chain	Analysed	Rotameric	Outliers	Percentiles
All	All	1497/1662 (90%)	1422 (95%)	75 (5%)	28 65

All (75) residues with a non-rotameric sidechain are listed below:

Mol	Chain	Res	Type
1	A	17	ARG
1	A	33	ARG
1	A	141	MET
1	A	183	ILE
1	A	202	GLN
1	B	53	LYS
1	B	103	GLU
1	B	206	ASN
2	C	3	LEU
2	C	4	THR
2	C	6	LEU
2	C	7	GLU
2	C	11	GLN
2	C	17	CYS
2	C	138	ASP
2	C	159	VAL
2	C	177	ASP
2	C	179	LYS
2	C	209	ASN
2	C	240	ARG
2	C	249	ARG
2	C	304	LEU
2	C	323	GLU
2	C	332	ASN
2	C	334	ASN
2	C	338	TYR
2	C	342	ASN
2	C	346	THR
2	C	347	TYR
2	C	349	SER
2	C	351	GLU
2	C	353	GLU
2	C	359	ILE
2	C	363	LEU
2	C	364	LEU
2	C	382	PHE
2	C	386	LYS

*Continued on next page...*

*Continued from previous page...*

Mol	Chain	Res	Type
2	C	392	LYS
2	C	395	ASP
2	C	403	HIS
3	D	1	MET
3	D	4	GLN
3	D	14	VAL
3	D	80	ASN
3	D	135	VAL
3	D	170	LYS
3	D	209	ASP
3	D	225	GLU
3	D	236	LEU
3	D	247	MET
3	D	276	GLU
2	E	4	THR
2	E	78	GLU
2	E	83	ARG
2	E	87	ARG
2	E	159	VAL
2	E	240	ARG
2	E	256	ARG
2	E	257	PHE
2	E	294	ARG
2	E	323	GLU
2	E	324	LYS
2	E	351	GLU
2	E	363	LEU
2	E	381	LYS
2	E	382	PHE
3	F	1	MET
3	F	14	VAL
3	F	38	ASP
3	F	112	HIS
3	F	140	VAL
3	F	217	ILE
3	F	225	GLU
3	F	229	SER
3	F	235	ARG

Some sidechains can be flipped to improve hydrogen bonding and reduce clashes. All (30) such sidechains are listed below:

Mol	Chain	Res	Type
1	A	199	ASN
1	A	203	ASN
1	A	211	ASN
1	B	20	GLN
1	B	199	ASN
1	B	205	GLN
1	B	206	ASN
1	B	211	ASN
2	C	115	ASN
2	C	124	GLN
2	C	135	HIS
2	C	209	ASN
2	C	326	ASN
3	D	15	GLN
3	D	61	GLN
3	D	80	ASN
3	D	116	GLN
3	D	126	GLN
3	D	179	HIS
3	D	210	HIS
3	D	316	GLN
2	E	124	GLN
2	E	135	HIS
2	E	316	GLN
3	F	15	GLN
3	F	44	HIS
3	F	61	GLN
3	F	116	GLN
3	F	126	GLN
3	F	202	ASN

### 5.3.3 RNA ⓘ

There are no RNA molecules in this entry.

### 5.4 Non-standard residues in protein, DNA, RNA chains ⓘ

There are no non-standard protein/DNA/RNA residues in this entry.

### 5.5 Carbohydrates ⓘ

There are no carbohydrates in this entry.

## 5.6 Ligand geometry

Of 8 ligands modelled in this entry, 2 are monoatomic - leaving 6 for Mogul analysis.

In the following table, the Counts columns list the number of bonds (or angles) for which Mogul statistics could be retrieved, the number of bonds (or angles) that are observed in the model and the number of bonds (or angles) that are defined in the chemical component dictionary. The Link column lists molecule types, if any, to which the group is linked. The Z score for a bond length (or angle) is the number of standard deviations the observed value is removed from the expected value. A bond length (or angle) with  $|Z| > 2$  is considered an outlier worth inspection. RMSZ is the root-mean-square of all Z scores of the bond lengths (or angles).

Mol	Type	Chain	Res	Link	Bond lengths			Bond angles		
					Counts	RMSZ	$\# Z  > 2$	Counts	RMSZ	$\# Z  > 2$
4	C2F	A	300	-	25,34,35	2.52	6 (24%)	28,47,49	1.74	9 (32%)
4	C2F	B	300	-	25,34,35	2.52	6 (24%)	28,47,49	1.74	8 (28%)
6	SF4	C	501	2	0,12,12	0.00	-	0,24,24	0.00	-
7	COB	C	502	-	75,102,102	1.25	5 (6%)	104,170,170	1.86	23 (22%)
6	SF4	E	501	2	0,12,12	0.00	-	0,24,24	0.00	-
7	COB	E	502	-	75,102,102	1.24	5 (6%)	104,170,170	1.90	23 (22%)

In the following table, the Chirals column lists the number of chiral outliers, the number of chiral centers analysed, the number of these observed in the model and the number defined in the chemical component dictionary. Similar counts are reported in the Torsion and Rings columns. '-' means no outliers of that kind were identified.

Mol	Type	Chain	Res	Link	Chirals	Torsions	Rings
4	C2F	A	300	-	-	0/16/31/35	0/3/3/3
4	C2F	B	300	-	-	0/16/31/35	0/3/3/3
6	SF4	C	501	2	-	0/0/48/48	0/6/5/5
7	COB	C	502	-	-	0/51/231/231	0/3/11/11
6	SF4	E	501	2	-	0/0/48/48	0/6/5/5
7	COB	E	502	-	-	0/51/231/231	0/3/11/11

All (22) bond length outliers are listed below:

Mol	Chain	Res	Type	Atoms	Z	Observed(Å)	Ideal(Å)
7	C	502	COB	CO-N23	-3.28	1.83	1.96
7	E	502	COB	CO-N23	-3.21	1.83	1.96
4	B	300	C2F	C6-N5	-2.26	1.43	1.46
4	A	300	C2F	C6-N5	-2.24	1.43	1.46
7	C	502	COB	C41-C8	2.07	1.57	1.54
7	E	502	COB	C41-C8	2.15	1.57	1.54
7	C	502	COB	C48-C13	2.40	1.57	1.54

*Continued on next page...*

*Continued from previous page...*

Mol	Chain	Res	Type	Atoms	Z	Observed(Å)	Ideal(Å)
7	E	502	COB	C48-C13	2.52	1.58	1.54
4	B	300	C2F	C4A-N5	2.76	1.44	1.37
4	A	300	C2F	C4A-N5	2.81	1.44	1.37
4	B	300	C2F	C15-N10	3.02	1.47	1.38
4	A	300	C2F	C15-N10	3.05	1.47	1.38
7	C	502	COB	C30-C3	3.27	1.59	1.54
7	E	502	COB	C30-C3	3.32	1.59	1.54
7	C	502	COB	C1-C19	4.47	1.56	1.51
7	E	502	COB	C1-C19	4.52	1.56	1.51
4	A	300	C2F	C-N	5.10	1.45	1.34
4	B	300	C2F	C-N	5.18	1.45	1.34
4	B	300	C2F	O4-C4	5.60	1.38	1.24
4	A	300	C2F	O4-C4	5.62	1.38	1.24
4	A	300	C2F	C2-NA2	8.40	1.51	1.34
4	B	300	C2F	C2-NA2	8.40	1.51	1.34

All (63) bond angle outliers are listed below:

Mol	Chain	Res	Type	Atoms	Z	Observed(°)	Ideal(°)
7	C	502	COB	C16-C15-C14	-6.25	113.59	124.00
7	E	502	COB	C16-C15-C14	-6.18	113.71	124.00
7	E	502	COB	C1-C19-N24	-4.68	103.24	114.53
7	C	502	COB	C1P-N59-C57	-4.42	112.55	122.73
7	C	502	COB	C54-C17-C16	-4.39	92.05	111.69
7	E	502	COB	C1P-N59-C57	-4.38	112.62	122.73
7	E	502	COB	C54-C17-C16	-4.34	92.26	111.69
7	C	502	COB	C1-C19-N24	-4.24	104.29	114.53
7	E	502	COB	C13-C14-C15	-3.43	119.94	131.85
4	B	300	C2F	CB-CA-CT	-3.20	107.64	112.28
7	C	502	COB	C13-C14-C15	-3.04	121.30	131.85
4	A	300	C2F	CB-CA-CT	-2.99	107.95	112.28
7	E	502	COB	C54-C17-C18	-2.84	106.85	112.08
4	A	300	C2F	C4A-N5-C6	-2.73	113.92	121.55
7	E	502	COB	C5M-C5B-C6B	-2.70	115.05	120.72
7	C	502	COB	C5M-C5B-C6B	-2.66	115.13	120.72
7	C	502	COB	C9-C10-C11	-2.61	124.28	131.90
7	C	502	COB	C54-C17-C18	-2.58	107.34	112.08
7	E	502	COB	C9-C10-C11	-2.57	124.41	131.90
7	C	502	COB	C35-C5-C4	-2.56	114.51	117.85
4	B	300	C2F	C4A-N5-C6	-2.56	114.40	121.55
7	E	502	COB	C2P-C1P-N59	-2.46	109.42	112.96
7	C	502	COB	C2P-C1P-N59	-2.45	109.45	112.96

*Continued on next page...*

*Continued from previous page...*

Mol	Chain	Res	Type	Atoms	Z	Observed(°)	Ideal(°)
7	E	502	COB	C4B-C9B-C8B	-2.43	118.61	121.10
7	E	502	COB	C35-C5-C4	-2.41	114.71	117.85
7	E	502	COB	O28-C27-N29	-2.39	115.87	122.47
7	E	502	COB	C5B-C4B-C9B	-2.35	117.45	121.08
7	C	502	COB	C5B-C4B-C9B	-2.33	117.47	121.08
7	C	502	COB	O28-C27-N29	-2.33	116.04	122.47
7	E	502	COB	C20-C1-C19	-2.30	106.58	109.42
4	A	300	C2F	N3-C2-N1	-2.28	121.75	125.45
7	C	502	COB	C3-C4-C5	-2.22	124.15	131.85
7	C	502	COB	C4B-C9B-C8B	-2.18	118.87	121.10
4	B	300	C2F	N3-C2-N1	-2.17	121.93	125.45
7	E	502	COB	C3-C4-C5	-2.14	124.42	131.85
7	C	502	COB	C1-C2-C3	-2.04	98.98	101.60
7	C	502	COB	C31-C32-N33	2.07	123.19	116.55
7	E	502	COB	C31-C32-N33	2.11	123.33	116.55
4	B	300	C2F	CB-CA-N	2.13	113.46	110.22
7	E	502	COB	O2-C3R-C2R	2.23	119.89	111.63
4	A	300	C2F	CB-CA-N	2.30	113.71	110.22
4	A	300	C2F	C6-C9-N10	2.32	118.25	111.08
7	C	502	COB	O2-C3R-C2R	2.35	120.32	111.63
7	E	502	COB	C18-C17-C16	2.40	105.18	101.04
4	A	300	C2F	CG-CB-CA	2.48	118.14	113.19
4	B	300	C2F	C2-N1-C8A	2.52	120.19	114.51
4	A	300	C2F	C2-N1-C8A	2.56	120.28	114.51
7	C	502	COB	C18-C17-C16	2.63	105.59	101.04
4	B	300	C2F	CG-CB-CA	2.66	118.50	113.19
4	B	300	C2F	C4-N3-C2	2.80	120.09	116.06
7	C	502	COB	C55-C17-C18	2.84	116.72	111.06
4	A	300	C2F	C4-N3-C2	2.91	120.24	116.06
7	E	502	COB	C55-C17-C18	3.10	117.23	111.06
7	E	502	COB	C20-C1-N21	3.15	113.47	110.47
7	C	502	COB	C20-C1-N21	3.63	113.92	110.47
7	E	502	COB	C35-C5-C6	3.99	123.06	117.85
7	C	502	COB	C35-C5-C6	4.17	123.29	117.85
4	A	300	C2F	C4-C4A-C8A	4.34	118.49	114.56
4	B	300	C2F	C4-C4A-C8A	4.40	118.55	114.56
7	C	502	COB	C7B-C8B-C9B	5.13	125.62	120.54
7	E	502	COB	C7B-C8B-C9B	5.48	125.96	120.54
7	C	502	COB	C53-C15-C16	5.69	125.28	117.85
7	E	502	COB	C53-C15-C16	6.16	125.89	117.85

There are no chirality outliers.

There are no torsion outliers.

There are no ring outliers.

5 monomers are involved in 34 short contacts:

Mol	Chain	Res	Type	Clashes	Symm-Clashes
4	A	300	C2F	1	0
4	B	300	C2F	1	0
7	C	502	COB	17	0
6	E	501	SF4	1	0
7	E	502	COB	14	0

## 5.7 Other polymers [i](#)

There are no such residues in this entry.

## 5.8 Polymer linkage issues [i](#)

There are no chain breaks in this entry.

## 6 Fit of model and data

### 6.1 Protein, DNA and RNA chains

In the following table, the column labelled ‘#RSRZ> 2’ contains the number (and percentage) of RSRZ outliers, followed by percent RSRZ outliers for the chain as percentile scores relative to all X-ray entries and entries of similar resolution. The OWAB column contains the minimum, median, 95<sup>th</sup> percentile and maximum values of the occupancy-weighted average B-factor per residue. The column labelled ‘Q< 0.9’ lists the number of (and percentage) of residues with an average occupancy less than 0.9.

Mol	Chain	Analysed	<RSRZ>	#RSRZ>2	OWAB(Å <sup>2</sup> )	Q<0.9
1	A	262/262 (100%)	-0.00	0 <span>100</span> <span>100</span>	46, 84, 131, 174	0
1	B	262/262 (100%)	0.26	5 (1%) <span>67</span> <span>38</span>	54, 112, 182, 260	0
2	C	441/446 (98%)	0.34	30 (6%) <span>18</span> <span>6</span>	62, 130, 212, 321	3 (0%)
2	E	441/446 (98%)	0.90	66 (14%) <span>3</span> <span>1</span>	68, 139, 259, 371	3 (0%)
3	D	323/323 (100%)	-0.08	1 (0%) <span>93</span> <span>82</span>	41, 72, 110, 188	0
3	F	323/323 (100%)	-0.11	2 (0%) <span>89</span> <span>71</span>	45, 81, 125, 207	1 (0%)
All	All	2052/2062 (99%)	0.27	104 (5%) <span>29</span> <span>12</span>	41, 101, 202, 371	7 (0%)

All (104) RSRZ outliers are listed below:

Mol	Chain	Res	Type	RSRZ
2	E	339	VAL	13.4
2	E	329	GLY	11.9
2	E	396	LEU	10.0
2	E	359	ILE	8.9
2	E	406	ILE	8.6
2	E	328	ILE	8.0
2	E	327	GLU	8.0
2	E	336	PRO	7.6
2	E	362	TYR	7.3
2	E	436	ILE	7.0
2	E	38	SER	6.8
2	E	37	ALA	6.3
2	E	394	VAL	6.0
2	E	405	ILE	6.0
2	E	428	VAL	5.8
2	E	427	ILE	5.7
2	E	56	ALA	5.6
2	E	330	ALA	5.6
2	C	338	TYR	5.3

*Continued on next page...*

*Continued from previous page...*

Mol	Chain	Res	Type	RSRZ
2	E	325	LEU	5.2
2	C	382	PHE	5.2
2	E	331	VAL	5.1
2	E	340	THR	5.0
2	E	429	GLY	5.0
2	E	440	ALA	4.9
2	E	382	PHE	4.3
2	E	3	LEU	4.3
2	E	335	SER	4.2
3	F	1	MET	4.1
2	E	337	VAL	4.1
2	E	57	ALA	4.1
2	E	326	ASN	4.1
2	E	158	LEU	4.0
2	E	388	ALA	3.9
2	E	36	LYS	3.9
2	E	46	SER	3.9
2	E	96	ILE	3.8
2	C	362	TYR	3.8
2	E	363	LEU	3.7
2	C	337	VAL	3.6
2	E	45	VAL	3.6
2	E	153	ALA	3.6
2	E	400	VAL	3.6
2	E	2	PRO	3.6
2	E	154	THR	3.6
2	E	366	VAL	3.5
2	E	6	LEU	3.4
2	C	56	ALA	3.4
2	C	427	ILE	3.3
2	E	415	LYS	3.3
2	E	433	ALA	3.3
2	C	336	PRO	3.2
2	E	387	ILE	3.2
2	E	383	GLU	3.1
1	B	64	THR	3.1
2	E	412	ALA	3.1
2	C	2	PRO	3.1
3	D	1	MET	3.1
2	E	395	ASP	3.0
1	B	150	PHE	2.9
2	C	156	LEU	2.9

*Continued on next page...*

*Continued from previous page...*

Mol	Chain	Res	Type	RSRZ
2	C	365	SER	2.9
2	C	407	ILE	2.7
2	C	180	PRO	2.6
2	C	334	ASN	2.6
2	C	57	ALA	2.5
2	E	182	LEU	2.5
2	E	391	MET	2.5
2	C	158	LEU	2.5
2	E	334	ASN	2.5
2	C	154	THR	2.5
1	B	108	LEU	2.5
2	E	332	ASN	2.4
2	C	99	SER	2.4
2	E	357	THR	2.4
2	E	425	GLU	2.4
1	B	46	VAL	2.3
2	C	329	GLY	2.3
2	E	338	TYR	2.3
2	E	361	SER	2.3
2	E	160	LEU	2.3
2	C	404	ARG	2.3
2	C	347	TYR	2.3
2	E	407	ILE	2.3
2	C	70	PRO	2.3
2	E	344	SER	2.3
2	C	363	LEU	2.2
2	C	428	VAL	2.2
2	C	361	SER	2.2
2	E	437	VAL	2.2
2	E	33	ALA	2.2
2	C	406	ILE	2.2
2	E	393	LYS	2.2
2	C	340	THR	2.1
2	E	32	LEU	2.1
2	E	398	ASN	2.1
2	E	384	ALA	2.1
1	B	144	VAL	2.1
2	C	32	LEU	2.1
2	C	328	ILE	2.1
2	C	366	VAL	2.0
2	C	364	LEU	2.0
2	E	438	ALA	2.0

*Continued on next page...*

*Continued from previous page...*

Mol	Chain	Res	Type	RSRZ
3	F	71	LEU	2.0

## 6.2 Non-standard residues in protein, DNA, RNA chains [i](#)

There are no non-standard protein/DNA/RNA residues in this entry.

## 6.3 Carbohydrates [i](#)

There are no carbohydrates in this entry.

## 6.4 Ligands [i](#)

In the following table, the Atoms column lists the number of modelled atoms in the group and the number defined in the chemical component dictionary. LLDF column lists the quality of electron density of the group with respect to its neighbouring residues in protein, DNA or RNA chains. The B-factors column lists the minimum, median, 95<sup>th</sup> percentile and maximum values of B factors of atoms in the group. The column labelled 'Q < 0.9' lists the number of atoms with occupancy less than 0.9.

Mol	Type	Chain	Res	Atoms	RSCC	RSR	LLDF	B-factors( $\text{\AA}^2$ )	Q<0.9
4	C2F	A	300	32/33	0.89	0.27	1.04	86,86,86,86	0
7	COB	C	502	92/92	0.88	0.26	-0.10	120,120,120,120	0
7	COB	E	502	92/92	0.84	0.31	-0.24	138,138,138,138	0
4	C2F	B	300	32/33	0.88	0.23	-0.28	91,91,91,91	0
6	SF4	E	501	8/8	0.89	0.12	-0.96	160,160,160,160	0
6	SF4	C	501	8/8	0.94	0.11	-1.16	148,148,148,148	0
5	CA	A	301	1/1	0.72	0.21	-	30,30,30,30	0
5	CA	B	301	1/1	0.79	0.13	-	30,30,30,30	0

## 6.5 Other polymers [i](#)

There are no such residues in this entry.