



# Full wwPDB X-ray Structure Validation Report ⓘ

Feb 14, 2017 – 03:40 am GMT

PDB ID : 3DPY  
Title : Protein farnesyltransferase complexed with FPP and caged TKCVIM substrate  
Authors : Hast, M.A.; Beese, L.S.  
Deposited on : 2008-07-09  
Resolution : 2.70 Å(reported)

This is a Full wwPDB X-ray Structure Validation Report for a publicly released PDB entry.

We welcome your comments at [validation@mail.wwpdb.org](mailto:validation@mail.wwpdb.org)

A user guide is available at

<http://wwpdb.org/validation/2016/XrayValidationReportHelp>

with specific help available everywhere you see the ⓘ symbol.

---

The following versions of software and data (see [references ⓘ](#)) were used in the production of this report:

MolProbity	:	4.02b-467
Mogul	:	1.7.2 (RC1), CSD as538be (2017)
Xtriage (Phenix)	:	1.9-1692
EDS	:	trunk28620
Percentile statistics	:	20161228.v01 (using entries in the PDB archive December 28th 2016)
Refmac	:	5.8.0135
CCP4	:	6.5.0
Ideal geometry (proteins)	:	Engh & Huber (2001)
Ideal geometry (DNA, RNA)	:	Parkinson et al. (1996)
Validation Pipeline (wwPDB-VP)	:	recalc28949

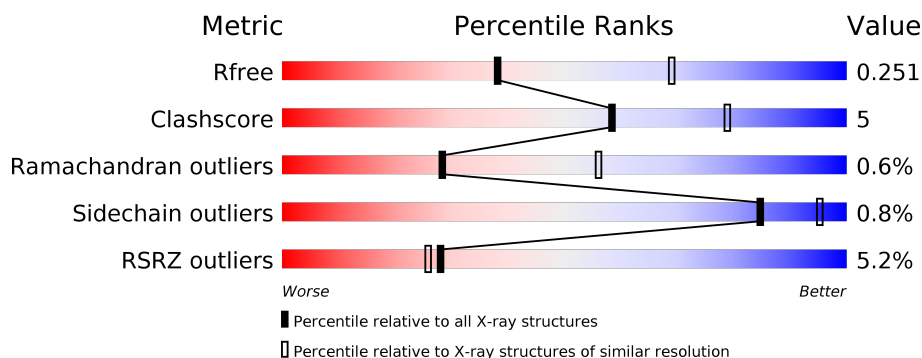
# 1 Overall quality at a glance

The following experimental techniques were used to determine the structure:

*X-RAY DIFFRACTION*

The reported resolution of this entry is 2.70 Å.

Percentile scores (ranging between 0-100) for global validation metrics of the entry are shown in the following graphic. The table shows the number of entries on which the scores are based.



Metric	Whole archive (#Entries)	Similar resolution (#Entries, resolution range(Å))
$R_{free}$	100719	2259 (2.70-2.70)
Clashscore	112137	2590 (2.70-2.70)
Ramachandran outliers	110173	2550 (2.70-2.70)
Sidechain outliers	110143	2550 (2.70-2.70)
RSRZ outliers	101464	2275 (2.70-2.70)

The table below summarises the geometric issues observed across the polymeric chains and their fit to the electron density. The red, orange, yellow and green segments on the lower bar indicate the fraction of residues that contain outliers for  $\geq 3$ , 2, 1 and 0 types of geometric quality criteria. A grey segment represents the fraction of residues that are not modelled. The numeric value for each fraction is indicated below the corresponding segment, with a dot representing fractions  $\leq 5\%$ . The upper red bar (where present) indicates the fraction of residues that have poor fit to the electron density. The numeric value is given above the bar.

Mol	Chain	Length	Quality of chain
1	A	377	<div> <div>6%</div> <div> <div></div> <div>75%</div> <div>10%</div> <div>••</div> <div>14%</div> </div> </div>
2	B	437	<div> <div>3%</div> <div> <div></div> <div>80%</div> <div>13%</div> <div>7%</div> </div> </div>
3	C	6	<div> <div>50%</div> <div> <div></div> <div>50%</div> </div> </div>

The following table lists non-polymeric compounds, carbohydrate monomers and non-standard residues in protein, DNA, RNA chains that are outliers for geometric or electron-density-fit criteria:

Mol	Type	Chain	Res	Chirality	Geometry	Clashes	Electron density
6	ACY	B	3002	-	-	-	X

## 2 Entry composition

There are 7 unique types of molecules in this entry. The entry contains 6060 atoms, of which 0 are hydrogens and 0 are deuteriums.

In the tables below, the ZeroOcc column contains the number of atoms modelled with zero occupancy, the AltConf column contains the number of residues with at least one atom in alternate conformation and the Trace column contains the number of residues modelled with at most 2 atoms.

- Molecule 1 is a protein called Protein farnesyltransferase/geranylgeranyltransferase type-1 subunit alpha.

Mol	Chain	Residues	Atoms					ZeroOcc	AltConf	Trace
1	A	323	Total	C	N	O	S	0	0	0
			2745	1746	481	513	5			

- Molecule 2 is a protein called Protein farnesyltransferase subunit beta.

Mol	Chain	Residues	Atoms					ZeroOcc	AltConf	Trace
2	B	407	Total	C	N	O	S	0	0	0
			3203	2050	550	580	23			

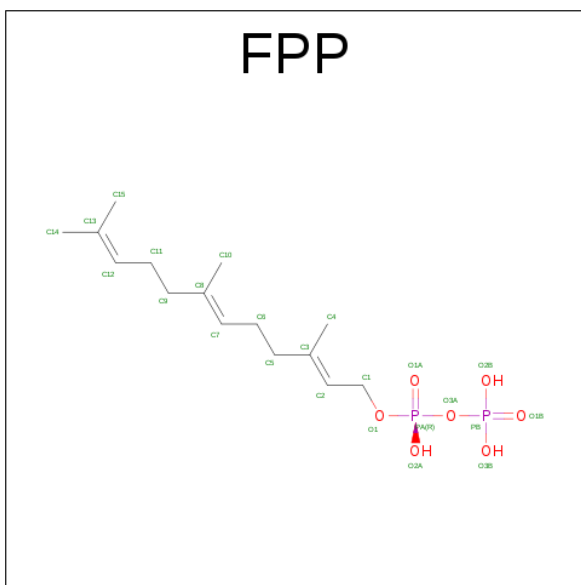
- Molecule 3 is a protein called caged substrate.

Mol	Chain	Residues	Atoms					ZeroOcc	AltConf	Trace
3	C	3	Total	C	N	O	S	0	0	0
			23	16	3	3	1			

- Molecule 4 is ZINC ION (three-letter code: ZN) (formula: Zn).

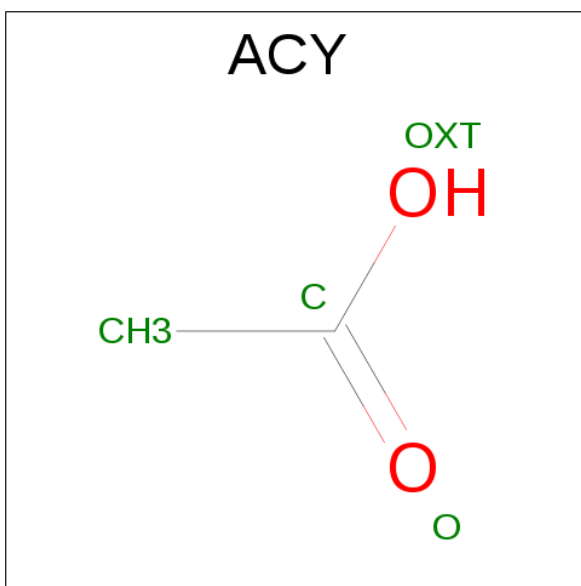
Mol	Chain	Residues	Atoms		ZeroOcc	AltConf
4	B	1	Total	Zn	0	0
			1	1		

- Molecule 5 is FARNESYL DIPHOSPHATE (three-letter code: FPP) (formula: C<sub>15</sub>H<sub>28</sub>O<sub>7</sub>P<sub>2</sub>).



Mol	Chain	Residues	Atoms				ZeroOcc	AltConf
5	B	1	Total	C	O	P	0	0
			24	15	7	2		

- Molecule 6 is ACETIC ACID (three-letter code: ACY) (formula:  $C_2H_4O_2$ ).



Mol	Chain	Residues	Atoms			ZeroOcc	AltConf
6	B	1	Total	C	O	0	0
			4	2	2		

- Molecule 7 is water.

Mol	Chain	Residues	Atoms		ZeroOcc	AltConf
7	A	34	Total 34	O 34	0	0
7	B	25	Total 25	O 25	0	0
7	C	1	Total 1	O 1	0	0



## 4 Data and refinement statistics

Property	Value	Source
Space group	P 61	Depositor
Cell constants a, b, c, $\alpha$ , $\beta$ , $\gamma$	171.49Å 171.49Å 69.53Å 90.00° 90.00° 120.00°	Depositor
Resolution (Å)	41.20 – 2.70 41.19 – 2.70	Depositor EDS
% Data completeness (in resolution range)	99.4 (41.20-2.70) 99.4 (41.19-2.70)	Depositor EDS
$R_{merge}$	(Not available)	Depositor
$R_{sym}$	(Not available)	Depositor
$\langle I/\sigma(I) \rangle$ <sup>1</sup>	6.28 (at 2.69Å)	Xtriage
Refinement program	REFMAC 5.4.0077	Depositor
R, $R_{free}$	0.215 , 0.253 0.214 , 0.251	Depositor DCC
$R_{free}$ test set	1630 reflections (5.35%)	DCC
Wilson B-factor (Å <sup>2</sup> )	53.2	Xtriage
Anisotropy	0.040	Xtriage
Bulk solvent $k_{sol}$ (e/Å <sup>3</sup> ), $B_{sol}$ (Å <sup>2</sup> )	0.36 , 41.9	EDS
L-test for twinning <sup>2</sup>	$\langle  L  \rangle = 0.50$ , $\langle L^2 \rangle = 0.33$	Xtriage
Estimated twinning fraction	0.026 for h,-h-k,-l	Xtriage
$F_o, F_c$ correlation	0.94	EDS
Total number of atoms	6060	wwPDB-VP
Average B, all atoms (Å <sup>2</sup> )	56.0	wwPDB-VP

Xtriage's analysis on translational NCS is as follows: *The largest off-origin peak in the Patterson function is 3.43% of the height of the origin peak. No significant pseudotranslation is detected.*

<sup>1</sup>Intensities estimated from amplitudes.

<sup>2</sup>Theoretical values of  $\langle |L| \rangle$ ,  $\langle L^2 \rangle$  for acentric reflections are 0.5, 0.333 respectively for untwinned datasets, and 0.375, 0.2 for perfectly twinned datasets.

## 5 Model quality

### 5.1 Standard geometry

Bond lengths and bond angles in the following residue types are not validated in this section: ACY, ZN, FPP

The Z score for a bond length (or angle) is the number of standard deviations the observed value is removed from the expected value. A bond length (or angle) with  $|Z| > 5$  is considered an outlier worth inspection. RMSZ is the root-mean-square of all Z scores of the bond lengths (or angles).

Mol	Chain	Bond lengths		Bond angles	
		RMSZ	# $ Z  > 5$	RMSZ	# $ Z  > 5$
1	A	0.33	0/2812	0.45	0/3817
2	B	0.36	0/3292	0.47	0/4473
3	C	0.48	0/22	0.72	0/28
All	All	0.35	0/6126	0.46	0/8318

There are no bond length outliers.

There are no bond angle outliers.

There are no chirality outliers.

There are no planarity outliers.

### 5.2 Too-close contacts

In the following table, the Non-H and H(model) columns list the number of non-hydrogen atoms and hydrogen atoms in the chain respectively. The H(added) column lists the number of hydrogen atoms added and optimized by MolProbity. The Clashes column lists the number of clashes within the asymmetric unit, whereas Symm-Clashes lists symmetry related clashes.

Mol	Chain	Non-H	H(model)	H(added)	Clashes	Symm-Clashes
1	A	2745	0	2666	34	0
2	B	3203	0	3130	32	0
3	C	23	0	28	0	0
4	B	1	0	0	0	0
5	B	24	0	25	1	0
6	B	4	0	3	0	0
7	A	34	0	0	0	0
7	B	25	0	0	0	0
7	C	1	0	0	0	0
All	All	6060	0	5852	65	0

The all-atom clashscore is defined as the number of clashes found per 1000 atoms (including hydrogen atoms). The all-atom clashscore for this structure is 5.

All (65) close contacts within the same asymmetric unit are listed below, sorted by their clash magnitude.

Atom-1	Atom-2	Interatomic distance (Å)	Clash overlap (Å)
1:A:326:GLN:NE2	1:A:330:LYS:NZ	2.01	1.08
1:A:325:ASN:O	1:A:326:GLN:O	1.78	1.00
1:A:156:ILE:HG12	1:A:172:ARG:HH12	1.37	0.89
1:A:326:GLN:NE2	1:A:330:LYS:HZ1	1.70	0.86
1:A:326:GLN:NE2	1:A:330:LYS:HZ2	1.72	0.83
1:A:326:GLN:HE21	1:A:330:LYS:NZ	1.78	0.81
1:A:156:ILE:CG1	1:A:172:ARG:HH12	1.99	0.75
1:A:325:ASN:O	1:A:326:GLN:C	2.27	0.72
1:A:326:GLN:HE22	1:A:330:LYS:NZ	1.86	0.72
1:A:326:GLN:HE21	1:A:330:LYS:HZ2	1.39	0.66
1:A:70:ALA:C	1:A:72:TRP:H	2.00	0.64
1:A:70:ALA:O	1:A:72:TRP:N	2.32	0.62
2:B:27:ARG:HB3	2:B:29:GLU:OE1	1.99	0.62
2:B:131:GLU:HG2	2:B:171:VAL:HG13	1.82	0.61
2:B:253:PHE:HA	2:B:307:LEU:HD21	1.81	0.61
2:B:93:TYR:HD2	2:B:96:LEU:HD12	1.65	0.61
1:A:302:LEU:HB3	1:A:306:HIS:HB2	1.85	0.59
2:B:239:ILE:HB	2:B:252:THR:HA	1.85	0.58
2:B:158:ASN:O	2:B:162:ILE:HG13	2.05	0.56
1:A:70:ALA:C	1:A:72:TRP:N	2.58	0.56
1:A:304:PRO:HD2	1:A:305:SER:H	1.71	0.55
2:B:202:ARG:HD2	5:B:1002:FPP:H142	1.88	0.55
1:A:329:ASN:HB3	1:A:332:ASP:HB3	1.88	0.55
1:A:326:GLN:HE21	1:A:330:LYS:CE	2.20	0.54
2:B:308:LEU:HD22	2:B:329:MET:HB2	1.91	0.53
2:B:93:TYR:CD2	2:B:96:LEU:HD12	2.44	0.53
1:A:87:VAL:O	1:A:88:VAL:C	2.48	0.52
1:A:69:ARG:HB3	1:A:71:GLU:OE2	2.10	0.51
2:B:276:TRP:O	2:B:280:ARG:HG2	2.10	0.50
2:B:180:TYR:CZ	2:B:184:LEU:HD11	2.47	0.50
1:A:96:PHE:HA	1:A:126:LEU:HD13	1.93	0.49
1:A:361:ARG:NH2	2:B:322:ALA:O	2.46	0.48
2:B:297:ASP:HB3	2:B:300:TYR:CD1	2.48	0.48
2:B:86:LEU:HB2	2:B:107:ILE:HG21	1.96	0.48
1:A:225:GLN:O	1:A:228:LYS:HB3	2.14	0.48
2:B:51:VAL:O	2:B:55:ILE:HG12	2.13	0.47
2:B:71:LEU:HB2	2:B:388:GLY:HA3	1.95	0.47

*Continued on next page...*

*Continued from previous page...*

Atom-1	Atom-2	Interatomic distance (Å)	Clash overlap (Å)
1:A:326:GLN:HE21	1:A:330:LYS:CD	2.28	0.47
2:B:211:ALA:HA	2:B:216:ILE:HG12	1.97	0.47
1:A:112:ARG:HA	1:A:140:LEU:HD21	1.97	0.46
2:B:248:HIS:HD2	2:B:291:ARG:HD3	1.80	0.46
2:B:100:ARG:HA	2:B:103:LEU:HD12	1.98	0.46
1:A:152:MET:O	1:A:156:ILE:HG13	2.16	0.46
1:A:323:LEU:HD22	1:A:367:HIS:HB3	1.96	0.46
1:A:85:SER:HA	1:A:86:PRO:HD3	1.79	0.45
2:B:82:LEU:HD21	2:B:363:THR:HG21	1.99	0.45
1:A:304:PRO:CD	1:A:305:SER:H	2.29	0.45
1:A:326:GLN:NE2	1:A:330:LYS:CE	2.77	0.45
2:B:70:ARG:C	2:B:71:LEU:HD23	2.37	0.45
2:B:370:LEU:HD23	2:B:394:LEU:HD11	1.98	0.44
2:B:309:PRO:HA	2:B:328:TRP:CZ3	2.52	0.44
2:B:335:LEU:HD23	2:B:373:ALA:HB2	1.99	0.44
1:A:87:VAL:O	1:A:89:GLN:N	2.51	0.44
1:A:296:LEU:HB2	1:A:318:ILE:HG21	2.00	0.43
2:B:325:MET:SD	2:B:381:MET:HG3	2.59	0.43
2:B:71:LEU:N	2:B:71:LEU:HD23	2.33	0.42
2:B:352:ASP:C	2:B:352:ASP:OD1	2.58	0.42
2:B:301:SER:O	2:B:305:ALA:HB3	2.19	0.41
1:A:148:LEU:HB2	1:A:179:LEU:HD21	2.02	0.41
1:A:155:ILE:HD13	1:A:171:HIS:CD2	2.56	0.41
2:B:127:CYS:O	2:B:131:GLU:HG3	2.20	0.41
1:A:130:ASN:OD1	1:A:133:VAL:HG23	2.21	0.41
2:B:192:LEU:HD23	2:B:199:VAL:CG2	2.51	0.41
2:B:242:VAL:HB	2:B:243:PRO:HD2	2.02	0.41
2:B:377:GLY:HA2	2:B:382:LEU:HD23	2.03	0.41

There are no symmetry-related clashes.

## 5.3 Torsion angles

### 5.3.1 Protein backbone

In the following table, the Percentiles column shows the percent Ramachandran outliers of the chain as a percentile score with respect to all X-ray entries followed by that with respect to entries of similar resolution.

The Analysed column shows the number of residues for which the backbone conformation was analysed, and the total number of residues.

Mol	Chain	Analysed	Favoured	Allowed	Outliers	Percentiles	
1	A	321/377 (85%)	301 (94%)	16 (5%)	4 (1%)	15	37
2	B	405/437 (93%)	392 (97%)	13 (3%)	0	100	100
3	C	1/6 (17%)	1 (100%)	0	0	100	100
All	All	727/820 (89%)	694 (96%)	29 (4%)	4 (1%)	28	56

All (4) Ramachandran outliers are listed below:

Mol	Chain	Res	Type
1	A	326	GLN
1	A	71	GLU
1	A	304	PRO
1	A	88	VAL

### 5.3.2 Protein sidechains ⓘ

In the following table, the Percentiles column shows the percent sidechain outliers of the chain as a percentile score with respect to all X-ray entries followed by that with respect to entries of similar resolution.

The Analysed column shows the number of residues for which the sidechain conformation was analysed, and the total number of residues.

Mol	Chain	Analysed	Rotameric	Outliers	Percentiles	
1	A	301/338 (89%)	297 (99%)	4 (1%)	73	91
2	B	344/371 (93%)	343 (100%)	1 (0%)	94	98
3	C	3/6 (50%)	3 (100%)	0	100	100
All	All	648/715 (91%)	643 (99%)	5 (1%)	85	95

All (5) residues with a non-rotameric sidechain are listed below:

Mol	Chain	Res	Type
1	A	58	LEU
1	A	71	GLU
1	A	173	ARG
1	A	326	GLN
2	B	351	LEU

Some sidechains can be flipped to improve hydrogen bonding and reduce clashes. All (3) such sidechains are listed below:

Mol	Chain	Res	Type
1	A	201	HIS
1	A	326	GLN
2	B	318	GLN

### 5.3.3 RNA ⓘ

There are no RNA molecules in this entry.

## 5.4 Non-standard residues in protein, DNA, RNA chains ⓘ

There are no non-standard protein/DNA/RNA residues in this entry.

## 5.5 Carbohydrates ⓘ

There are no carbohydrates in this entry.

## 5.6 Ligand geometry ⓘ

Of 3 ligands modelled in this entry, 1 is monoatomic - leaving 2 for Mogul analysis.

In the following table, the Counts columns list the number of bonds (or angles) for which Mogul statistics could be retrieved, the number of bonds (or angles) that are observed in the model and the number of bonds (or angles) that are defined in the chemical component dictionary. The Link column lists molecule types, if any, to which the group is linked. The Z score for a bond length (or angle) is the number of standard deviations the observed value is removed from the expected value. A bond length (or angle) with  $|Z| > 2$  is considered an outlier worth inspection. RMSZ is the root-mean-square of all Z scores of the bond lengths (or angles).

Mol	Type	Chain	Res	Link	Bond lengths			Bond angles		
					Counts	RMSZ	$\# Z  > 2$	Counts	RMSZ	$\# Z  > 2$
5	FPP	B	1002	-	22,23,23	2.14	5 (22%)	24,31,31	1.22	1 (4%)
6	ACY	B	3002	-	1,3,3	1.39	0	0,3,3	0.00	-

In the following table, the Chirals column lists the number of chiral outliers, the number of chiral centers analysed, the number of these observed in the model and the number defined in the chemical component dictionary. Similar counts are reported in the Torsion and Rings columns. '-' means no outliers of that kind were identified.

Mol	Type	Chain	Res	Link	Chirals	Torsions	Rings
5	FPP	B	1002	-	-	0/25/25/25	0/0/0/0
6	ACY	B	3002	-	-	0/0/0/0	0/0/0/0

All (5) bond length outliers are listed below:

Mol	Chain	Res	Type	Atoms	Z	Observed(Å)	Ideal(Å)
5	B	1002	FPP	PB-O1B	2.12	1.58	1.50
5	B	1002	FPP	PA-O1A	2.31	1.59	1.50
5	B	1002	FPP	PA-O2A	4.51	1.77	1.55
5	B	1002	FPP	PB-O3B	5.67	1.78	1.54
5	B	1002	FPP	PB-O2B	5.79	1.78	1.54

All (1) bond angle outliers are listed below:

Mol	Chain	Res	Type	Atoms	Z	Observed(°)	Ideal(°)
5	B	1002	FPP	C6-C7-C8	-3.36	119.24	127.68

There are no chirality outliers.

There are no torsion outliers.

There are no ring outliers.

1 monomer is involved in 1 short contact:

Mol	Chain	Res	Type	Clashes	Symm-Clashes
5	B	1002	FPP	1	0

## 5.7 Other polymers [i](#)

There are no such residues in this entry.

## 5.8 Polymer linkage issues [i](#)

There are no chain breaks in this entry.

## 6 Fit of model and data

### 6.1 Protein, DNA and RNA chains

In the following table, the column labelled ‘#RSRZ> 2’ contains the number (and percentage) of RSRZ outliers, followed by percent RSRZ outliers for the chain as percentile scores relative to all X-ray entries and entries of similar resolution. The OWAB column contains the minimum, median, 95<sup>th</sup> percentile and maximum values of the occupancy-weighted average B-factor per residue. The column labelled ‘Q< 0.9’ lists the number of (and percentage) of residues with an average occupancy less than 0.9.

Mol	Chain	Analysed	<RSRZ>	#RSRZ>2		OWAB(Å <sup>2</sup> )	Q<0.9
1	A	323/377 (85%)	0.15	21 (6%)	20 17	30, 56, 93, 107	0
2	B	407/437 (93%)	0.16	14 (3%)	46 45	32, 53, 76, 97	0
3	C	3/6 (50%)	6.17	3 (100%)	0 0	34, 34, 34, 35	3 (100%)
All	All	733/820 (89%)	0.18	38 (5%)	28 26	30, 54, 86, 107	3 (0%)

All (38) RSRZ outliers are listed below:

Mol	Chain	Res	Type	RSRZ
3	C	2007	VAL	7.6
2	B	64	PHE	7.2
3	C	2008	ILE	6.8
1	A	375	ALA	6.8
2	B	19	TRP	5.1
2	B	20	SER	4.8
2	B	17	PRO	4.2
1	A	302	LEU	4.1
3	C	2009	MET	4.1
2	B	423	PHE	4.1
1	A	376	SER	3.9
1	A	372	ASP	3.9
2	B	380	ALA	3.7
1	A	367	HIS	3.5
2	B	381	MET	3.5
1	A	369	ARG	3.4
1	A	305	SER	3.3
1	A	340	LEU	3.1
1	A	371	SER	3.0
2	B	18	VAL	3.0
1	A	339	GLU	2.9
1	A	374	PRO	2.9
1	A	306	HIS	2.8

*Continued on next page...*

*Continued from previous page...*

Mol	Chain	Res	Type	RSRZ
2	B	70	ARG	2.8
1	A	373	ILE	2.6
1	A	301	ASP	2.6
2	B	422	GLY	2.6
1	A	304	PRO	2.5
1	A	368	SER	2.5
1	A	319	TYR	2.3
2	B	219	PRO	2.2
1	A	55	PHE	2.2
1	A	315	LEU	2.2
1	A	217	ASP	2.2
2	B	40	VAL	2.1
2	B	277	VAL	2.1
1	A	268	LYS	2.0
2	B	389	VAL	2.0

## 6.2 Non-standard residues in protein, DNA, RNA chains [i](#)

There are no non-standard protein/DNA/RNA residues in this entry.

## 6.3 Carbohydrates [i](#)

There are no carbohydrates in this entry.

## 6.4 Ligands [i](#)

In the following table, the Atoms column lists the number of modelled atoms in the group and the number defined in the chemical component dictionary. LLDF column lists the quality of electron density of the group with respect to its neighbouring residues in protein, DNA or RNA chains. The B-factors column lists the minimum, median, 95<sup>th</sup> percentile and maximum values of B factors of atoms in the group. The column labelled 'Q< 0.9' lists the number of atoms with occupancy less than 0.9.

Mol	Type	Chain	Res	Atoms	RSCC	RSR	LLDF	B-factors(Å <sup>2</sup> )	Q<0.9
6	ACY	B	3002	4/4	0.85	0.31	4.74	61,62,62,62	0
5	FPP	B	1002	24/24	0.98	0.21	-0.23	27,37,42,44	0
4	ZN	B	1001	1/1	0.98	0.15	-	44,44,44,44	0

## 6.5 Other polymers [i](#)

There are no such residues in this entry.