



Full wwPDB X-ray Structure Validation Report ⓘ

Aug 30, 2017 – 10:35 AM EDT

PDB ID : 5DS3
Title : Crystal structure of constitutively active PARP-1
Authors : Langelier, M.F.; Pascal, J.M.
Deposited on : unknown
Resolution : 2.60 Å(reported)

This is a Full wwPDB X-ray Structure Validation Report for a publicly released PDB entry.

We welcome your comments at validation@mail.wwpdb.org

A user guide is available at

<http://wwpdb.org/validation/2016/XrayValidationReportHelp>

with specific help available everywhere you see the ⓘ symbol.

The following versions of software and data (see [references ⓘ](#)) were used in the production of this report:

MolProbity : 4.02b-467
Mogul : 1.7.2 (RC1), CSD as538be (2017)
Xtriage (Phenix) : 1.9-1692
EDS : rb-20029824
Percentile statistics : 20161228.v01 (using entries in the PDB archive December 28th 2016)
Refmac : 5.8.0135
CCP4 : 6.5.0
Ideal geometry (proteins) : Engh & Huber (2001)
Ideal geometry (DNA, RNA) : Parkinson et al. (1996)
Validation Pipeline (wwPDB-VP) : rb-20029824

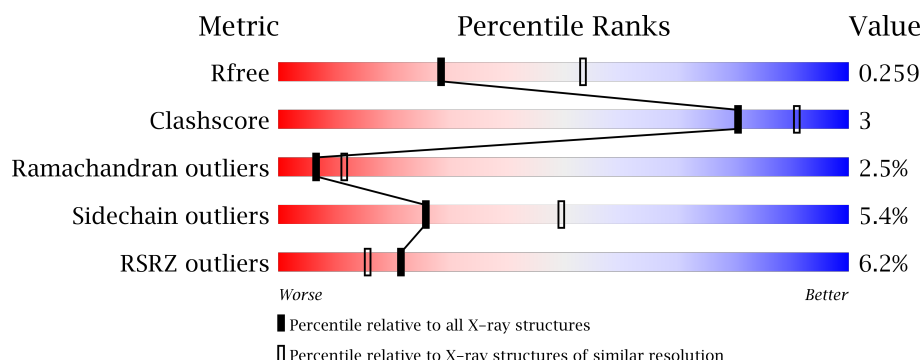
1 Overall quality at a glance

The following experimental techniques were used to determine the structure:

X-RAY DIFFRACTION

The reported resolution of this entry is 2.60 Å.

Percentile scores (ranging between 0-100) for global validation metrics of the entry are shown in the following graphic. The table shows the number of entries on which the scores are based.



Metric	Whole archive (#Entries)	Similar resolution (#Entries, resolution range(Å))
R_{free}	100719	2542 (2.60-2.60)
Clashscore	112137	2895 (2.60-2.60)
Ramachandran outliers	110173	2848 (2.60-2.60)
Sidechain outliers	110143	2848 (2.60-2.60)
RSRZ outliers	101464	2550 (2.60-2.60)

The table below summarises the geometric issues observed across the polymeric chains and their fit to the electron density. The red, orange, yellow and green segments on the lower bar indicate the fraction of residues that contain outliers for ≥ 3 , 2, 1 and 0 types of geometric quality criteria. A grey segment represents the fraction of residues that are not modelled. The numeric value for each fraction is indicated below the corresponding segment, with a dot representing fractions $\leq 5\%$. The upper red bar (where present) indicates the fraction of residues that have poor fit to the electron density. The numeric value is given above the bar.

Mol	Chain	Length	Quality of chain
1	A	271	<div> <div>6%</div> <div>77%</div> <div>12%</div> <div>10%</div> </div>

2 Entry composition

There are 5 unique types of molecules in this entry. The entry contains 1988 atoms, of which 0 are hydrogens and 0 are deuteriums.

In the tables below, the ZeroOcc column contains the number of atoms modelled with zero occupancy, the AltConf column contains the number of residues with at least one atom in alternate conformation and the Trace column contains the number of residues modelled with at most 2 atoms.

- Molecule 1 is a protein called Poly [ADP-ribose] polymerase 1.

Mol	Chain	Residues	Atoms					ZeroOcc	AltConf	Trace
1	A	243	Total	C	N	O	S	0	2	0
			1903	1217	327	353	6			

There are 46 discrepancies between the modelled and reference sequences:

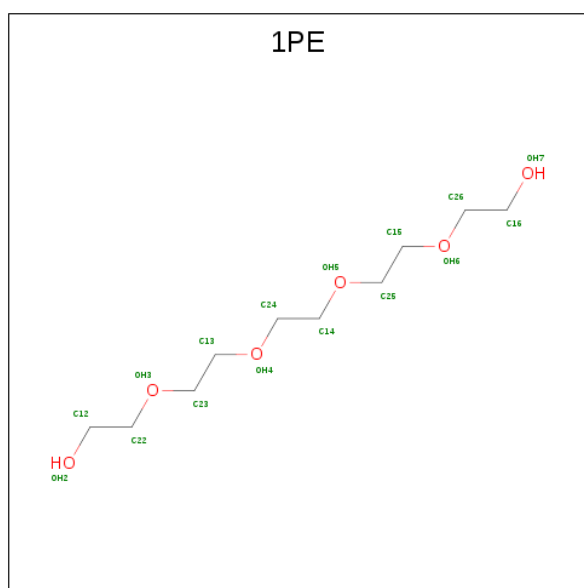
Chain	Residue	Modelled	Actual	Comment	Reference
A	742	MET	-	expression tag	UNP P09874
A	743	GLY	-	expression tag	UNP P09874
A	744	SER	-	expression tag	UNP P09874
A	745	SER	-	expression tag	UNP P09874
A	746	HIS	-	expression tag	UNP P09874
A	747	HIS	-	expression tag	UNP P09874
A	748	HIS	-	expression tag	UNP P09874
A	749	HIS	-	expression tag	UNP P09874
A	750	HIS	-	expression tag	UNP P09874
A	751	HIS	-	expression tag	UNP P09874
A	752	SER	-	expression tag	UNP P09874
A	753	SER	-	expression tag	UNP P09874
A	754	GLY	-	expression tag	UNP P09874
A	755	LEU	-	expression tag	UNP P09874
A	756	VAL	-	expression tag	UNP P09874
A	757	PRO	-	expression tag	UNP P09874
A	758	ARG	-	expression tag	UNP P09874
A	759	GLY	-	expression tag	UNP P09874
A	760	SER	-	expression tag	UNP P09874
A	761	HIS	-	expression tag	UNP P09874
A	762	MET	-	expression tag	UNP P09874
A	763	THR	-	expression tag	UNP P09874
A	764	LYS	-	expression tag	UNP P09874
A	765	SER	-	expression tag	UNP P09874
A	766	LYS	-	expression tag	UNP P09874
A	767	LEU	-	expression tag	UNP P09874
A	768	PRO	-	expression tag	UNP P09874

Continued on next page...

Continued from previous page...

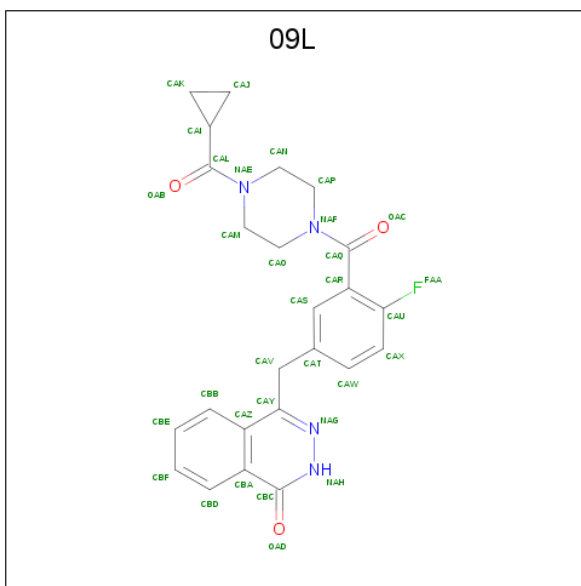
Chain	Residue	Modelled	Actual	Comment	Reference
A	769	LYS	-	expression tag	UNP P09874
A	770	PRO	-	expression tag	UNP P09874
A	771	VAL	-	expression tag	UNP P09874
A	772	GLN	-	expression tag	UNP P09874
A	773	ASP	-	expression tag	UNP P09874
A	774	LEU	-	expression tag	UNP P09874
A	775	ILE	-	expression tag	UNP P09874
A	776	LYS	-	expression tag	UNP P09874
A	777	MET	-	expression tag	UNP P09874
A	778	ILE	-	expression tag	UNP P09874
A	779	PHE	-	expression tag	UNP P09874
A	780	GLY	-	expression tag	UNP P09874
A	781	SER	-	expression tag	UNP P09874
A	782	GLY	-	expression tag	UNP P09874
A	783	SER	-	expression tag	UNP P09874
A	784	GLY	-	expression tag	UNP P09874
A	785	SER	-	expression tag	UNP P09874
A	786	GLY	-	expression tag	UNP P09874
A	787	GLY	-	expression tag	UNP P09874

- Molecule 2 is PENTAETHYLENE GLYCOL (three-letter code: 1PE) (formula: C₁₀H₂₂O₆).



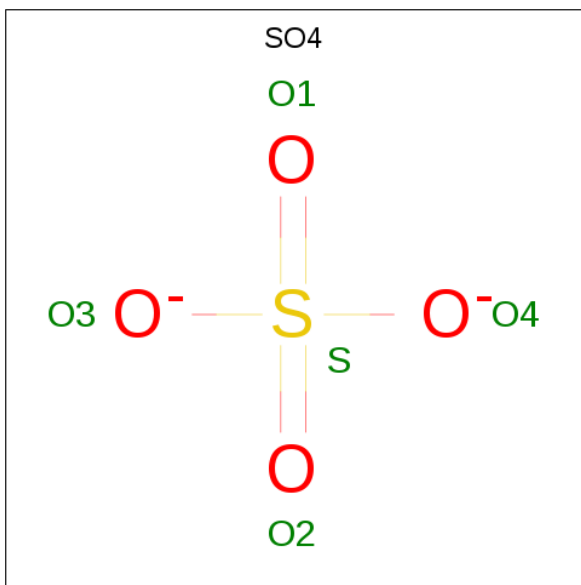
Mol	Chain	Residues	Atoms			ZeroOcc	AltConf
2	A	1	Total	C	O	0	0
			16	10	6		

- Molecule 3 is 4-(3-{[4-(cyclopropylcarbonyl)piperazin-1-yl]carbonyl}-4-fluorobenzyl)phthala

zin-1(2H)-one (three-letter code: 09L) (formula: C₂₄H₂₃FN₄O₃).

Mol	Chain	Residues	Atoms					ZeroOcc	AltConf
3	A	1	Total	C	F	N	O	0	0
			32	24	1	4	3		

- Molecule 4 is SULFATE ION (three-letter code: SO4) (formula: O_4S).

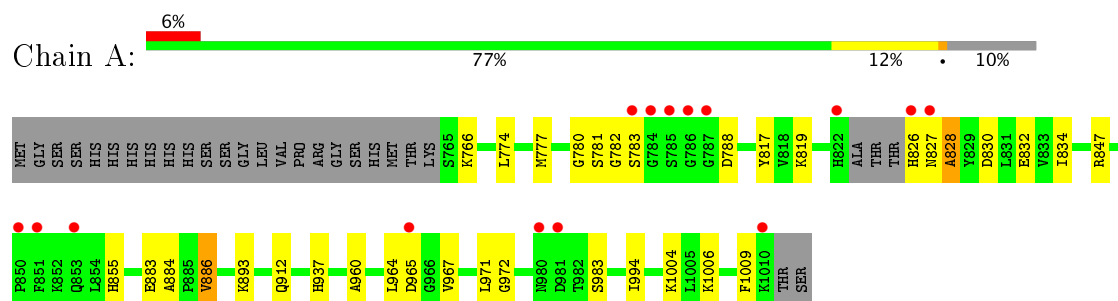


Mol	Chain	Residues	Atoms	ZeroOcc	AltConf
4	A	1	Total O S 5 4 1	0	0
4	A	1	Total O S 5 4 1	0	0

- Molecule 5 is water.

Mol	Chain	Residues	Atoms		ZeroOcc	AltConf
5	A	27	Total	O	0	0
			27	27		

- Molecule 1: Poly [ADP-ribose] polymerase 1



4 Data and refinement statistics

Property	Value	Source
Space group	P 61 2 2	Depositor
Cell constants a, b, c, α , β , γ	93.41 Å 93.41 Å 134.20 Å 90.00° 90.00° 120.00°	Depositor
Resolution (Å)	19.58 – 2.60 19.57 – 2.60	Depositor EDS
% Data completeness (in resolution range)	99.5 (19.58-2.60) 99.9 (19.57-2.60)	Depositor EDS
R_{merge}	(Not available)	Depositor
R_{sym}	(Not available)	Depositor
$\langle I/\sigma(I) \rangle$ ¹	1.62 (at 2.59 Å)	Xtriage
Refinement program	REFMAC 5.7.0032	Depositor
R, R_{free}	0.200 , 0.251 0.210 , 0.259	Depositor DCC
R_{free} test set	533 reflections (5.02%)	DCC
Wilson B-factor (Å ²)	56.5	Xtriage
Anisotropy	0.302	Xtriage
Bulk solvent k_{sol} (e/Å ³), B_{sol} (Å ²)	0.29 , 28.4	EDS
L-test for twinning ²	$\langle L \rangle = 0.48$, $\langle L^2 \rangle = 0.31$	Xtriage
Estimated twinning fraction	No twinning to report.	Xtriage
F_o, F_c correlation	0.95	EDS
Total number of atoms	1988	wwPDB-VP
Average B, all atoms (Å ²)	60.0	wwPDB-VP

Xtriage's analysis on translational NCS is as follows: *The largest off-origin peak in the Patterson function is 4.66% of the height of the origin peak. No significant pseudotranslation is detected.*

¹Intensities estimated from amplitudes.

²Theoretical values of $\langle |L| \rangle$, $\langle L^2 \rangle$ for acentric reflections are 0.5, 0.333 respectively for untwinned datasets, and 0.375, 0.2 for perfectly twinned datasets.

5 Model quality [i](#)

5.1 Standard geometry [i](#)

Bond lengths and bond angles in the following residue types are not validated in this section: 09L, SO4, 1PE

The Z score for a bond length (or angle) is the number of standard deviations the observed value is removed from the expected value. A bond length (or angle) with $|Z| > 5$ is considered an outlier worth inspection. RMSZ is the root-mean-square of all Z scores of the bond lengths (or angles).

Mol	Chain	Bond lengths		Bond angles	
		RMSZ	$\# Z > 5$	RMSZ	$\# Z > 5$
1	A	0.41	0/1947	0.61	0/2627

There are no bond length outliers.

There are no bond angle outliers.

There are no chirality outliers.

There are no planarity outliers.

5.2 Too-close contacts [i](#)

In the following table, the Non-H and H(model) columns list the number of non-hydrogen atoms and hydrogen atoms in the chain respectively. The H(added) column lists the number of hydrogen atoms added and optimized by MolProbity. The Clashes column lists the number of clashes within the asymmetric unit, whereas Symm-Clashes lists symmetry related clashes.

Mol	Chain	Non-H	H(model)	H(added)	Clashes	Symm-Clashes
1	A	1903	0	1906	12	0
2	A	16	0	22	0	0
3	A	32	0	23	0	0
4	A	10	0	0	0	0
5	A	27	0	0	1	0
All	All	1988	0	1951	12	0

The all-atom clashscore is defined as the number of clashes found per 1000 atoms (including hydrogen atoms). The all-atom clashscore for this structure is 3.

All (12) close contacts within the same asymmetric unit are listed below, sorted by their clash magnitude.

Atom-1	Atom-2	Interatomic distance (Å)	Clash overlap (Å)
1:A:960:ALA:HB3	1:A:972:GLY:HA2	1.90	0.54
1:A:826:HIS:CG	1:A:827:ASN:N	2.75	0.53
1:A:1004:LYS:NZ	5:A:1201:HOH:O	2.47	0.47
1:A:912:GLN:HE21	1:A:1009:PHE:HB3	1.80	0.46
1:A:827:ASN:O	1:A:828:ALA:HB3	2.16	0.45
1:A:884:ALA:HB3	1:A:893:LYS:HE2	1.98	0.45
1:A:827:ASN:O	1:A:828:ALA:CB	2.66	0.43
1:A:847:ARG:NH1	1:A:994:ILE:HD12	2.33	0.43
1:A:834:ILE:HD11	1:A:1006:LYS:HB2	2.01	0.42
1:A:964:LEU:O	1:A:967:VAL:N	2.51	0.41
1:A:886:VAL:HG21	1:A:937:HIS:O	2.21	0.41
1:A:774:LEU:HD12	1:A:777:MET:HE3	2.03	0.40

There are no symmetry-related clashes.

5.3 Torsion angles [i](#)

5.3.1 Protein backbone [i](#)

In the following table, the Percentiles column shows the percent Ramachandran outliers of the chain as a percentile score with respect to all X-ray entries followed by that with respect to entries of similar resolution.

The Analysed column shows the number of residues for which the backbone conformation was analysed, and the total number of residues.

Mol	Chain	Analysed	Favoured	Allowed	Outliers	Percentiles
1	A	241/271 (89%)	227 (94%)	8 (3%)	6 (2%)	6 11

All (6) Ramachandran outliers are listed below:

Mol	Chain	Res	Type
1	A	783	SER
1	A	828	ALA
1	A	780	GLY
1	A	782	GLY
1	A	781	SER
1	A	788	ASP

5.3.2 Protein sidechains ⓘ

In the following table, the Percentiles column shows the percent sidechain outliers of the chain as a percentile score with respect to all X-ray entries followed by that with respect to entries of similar resolution.

The Analysed column shows the number of residues for which the sidechain conformation was analysed, and the total number of residues.

Mol	Chain	Analysed	Rotameric	Outliers	Percentiles
1	A	206 / 233 (88%)	194 (94%)	12 (6%)	23 46

All (12) residues with a non-rotameric sidechain are listed below:

Mol	Chain	Res	Type
1	A	766	LYS
1	A	817	TYR
1	A	819	LYS
1	A	830	ASP
1	A	832	GLU
1	A	855[A]	HIS
1	A	855[B]	HIS
1	A	883	GLU
1	A	886	VAL
1	A	965	ASP
1	A	971	LEU
1	A	983	SER

Some sidechains can be flipped to improve hydrogen bonding and reduce clashes. All (4) such sidechains are listed below:

Mol	Chain	Res	Type
1	A	772	GLN
1	A	912	GLN
1	A	980	ASN
1	A	998	ASN

5.3.3 RNA ⓘ

There are no RNA molecules in this entry.

5.4 Non-standard residues in protein, DNA, RNA chains ⓘ

There are no non-standard protein/DNA/RNA residues in this entry.

5.5 Carbohydrates ⓘ

There are no carbohydrates in this entry.

5.6 Ligand geometry ⓘ

4 ligands are modelled in this entry.

In the following table, the Counts columns list the number of bonds (or angles) for which Mogul statistics could be retrieved, the number of bonds (or angles) that are observed in the model and the number of bonds (or angles) that are defined in the chemical component dictionary. The Link column lists molecule types, if any, to which the group is linked. The Z score for a bond length (or angle) is the number of standard deviations the observed value is removed from the expected value. A bond length (or angle) with $|Z| > 2$ is considered an outlier worth inspection. RMSZ is the root-mean-square of all Z scores of the bond lengths (or angles).

Mol	Type	Chain	Res	Link	Bond lengths			Bond angles		
					Counts	RMSZ	$\# Z > 2$	Counts	RMSZ	$\# Z > 2$
2	1PE	A	1101	-	15,15,15	0.22	0	14,14,14	0.18	0
3	09L	A	1102	-	35,36,36	1.03	3 (8%)	44,52,52	1.66	1 (2%)
4	SO4	A	1103	-	4,4,4	0.40	0	6,6,6	0.25	0
4	SO4	A	1104	-	4,4,4	0.46	0	6,6,6	0.11	0

In the following table, the Chirals column lists the number of chiral outliers, the number of chiral centers analysed, the number of these observed in the model and the number defined in the chemical component dictionary. Similar counts are reported in the Torsion and Rings columns. '-' means no outliers of that kind were identified.

Mol	Type	Chain	Res	Link	Chirals	Torsions	Rings
2	1PE	A	1101	-	-	0/13/13/13	0/0/0/0
3	09L	A	1102	-	-	0/20/32/32	0/4/5/5
4	SO4	A	1103	-	-	0/0/0/0	0/0/0/0
4	SO4	A	1104	-	-	0/0/0/0	0/0/0/0

All (3) bond length outliers are listed below:

Mol	Chain	Res	Type	Atoms	Z	Observed(Å)	Ideal(Å)
3	A	1102	09L	CAY-NAG	-3.00	1.29	1.32
3	A	1102	09L	NAH-NAG	2.20	1.40	1.34
3	A	1102	09L	CAY-CAZ	4.11	1.47	1.43

All (1) bond angle outliers are listed below:

Mol	Chain	Res	Type	Atoms	Z	Observed($^{\circ}$)	Ideal($^{\circ}$)
3	A	1102	09L	CBC-NAH-NAG	10.35	126.98	119.36

There are no chirality outliers.

There are no torsion outliers.

There are no ring outliers.

No monomer is involved in short contacts.

5.7 Other polymers

There are no such residues in this entry.

5.8 Polymer linkage issues

There are no chain breaks in this entry.

6 Fit of model and data [i](#)

6.1 Protein, DNA and RNA chains [i](#)

In the following table, the column labelled ‘#RSRZ> 2’ contains the number (and percentage) of RSRZ outliers, followed by percent RSRZ outliers for the chain as percentile scores relative to all X-ray entries and entries of similar resolution. The OWAB column contains the minimum, median, 95th percentile and maximum values of the occupancy-weighted average B-factor per residue. The column labelled ‘Q< 0.9’ lists the number of (and percentage) of residues with an average occupancy less than 0.9.

Mol	Chain	Analysed	<RSRZ>	#RSRZ>2	OWAB(Å ²)	Q<0.9
1	A	243/271 (89%)	-0.01	15 (6%) 21 16	35, 57, 96, 119	0

All (15) RSRZ outliers are listed below:

Mol	Chain	Res	Type	RSRZ
1	A	853	GLN	5.0
1	A	785	SER	4.5
1	A	826	HIS	4.1
1	A	827	ASN	3.9
1	A	783	SER	3.7
1	A	1010	LYS	3.3
1	A	784	GLY	3.2
1	A	981	ASP	3.1
1	A	822	HIS	2.9
1	A	787	GLY	2.8
1	A	850	PRO	2.7
1	A	980	ASN	2.6
1	A	786	GLY	2.5
1	A	965	ASP	2.3
1	A	851	PHE	2.2

6.2 Non-standard residues in protein, DNA, RNA chains [i](#)

There are no non-standard protein/DNA/RNA residues in this entry.

6.3 Carbohydrates [i](#)

There are no carbohydrates in this entry.

6.4 Ligands [i](#)

In the following table, the Atoms column lists the number of modelled atoms in the group and the number defined in the chemical component dictionary. LLDF column lists the quality of electron density of the group with respect to its neighbouring residues in protein, DNA or RNA chains. The B-factors column lists the minimum, median, 95th percentile and maximum values of B factors of atoms in the group. The column labelled 'Q< 0.9' lists the number of atoms with occupancy less than 0.9.

Mol	Type	Chain	Res	Atoms	RSCC	RSR	LLDF	B-factors(\AA^2)	Q<0.9
3	09L	A	1102	32/32	0.96	0.13	-0.84	35,38,46,48	0
4	SO4	A	1103	5/5	0.97	0.11	-3.97	71,71,73,74	0
4	SO4	A	1104	5/5	0.93	0.34	-	101,102,104,104	0
2	1PE	A	1101	16/16	0.81	0.28	-	66,73,84,85	0

6.5 Other polymers [i](#)

There are no such residues in this entry.