



wwPDB X-ray Structure Validation Summary Report ⓘ

Feb 14, 2017 – 06:09 am GMT

PDB ID : 3DTA
Title : E(L212)Q, N(M44)D double mutant structure of photosynthetic reaction center from Rhodobacter sphaeroides
Authors : Pokkuluri, P.R.; Schiffer, M.
Deposited on : 2008-07-14
Resolution : 3.20 Å(reported)

This is a wwPDB X-ray Structure Validation Summary Report for a publicly released PDB entry.

We welcome your comments at validation@mail.wwpdb.org

A user guide is available at

<http://wwpdb.org/validation/2016/XrayValidationReportHelp>

with specific help available everywhere you see the ⓘ symbol.

The following versions of software and data (see [references ⓘ](#)) were used in the production of this report:

MolProbity : 4.02b-467
Mogul : 1.7.2 (RC1), CSD as538be (2017)
Xtriage (Phenix) : 1.9-1692
EDS : trunk28620
Percentile statistics : 20161228.v01 (using entries in the PDB archive December 28th 2016)
Refmac : 5.8.0135
CCP4 : 6.5.0
Ideal geometry (proteins) : Engh & Huber (2001)
Ideal geometry (DNA, RNA) : Parkinson et al. (1996)
Validation Pipeline (wwPDB-VP) : recalc28949

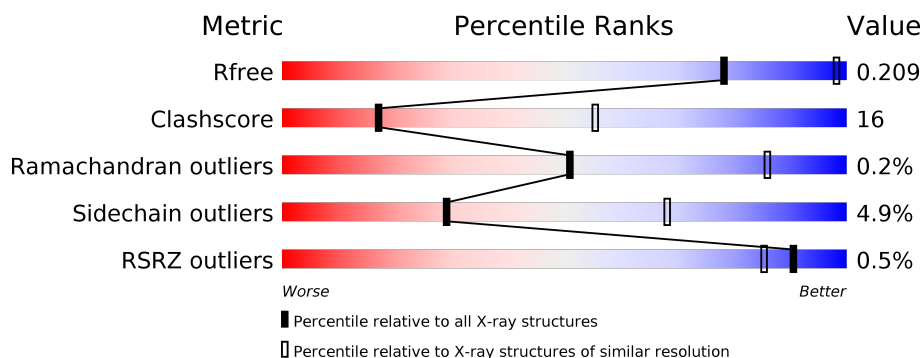
1 Overall quality at a glance

The following experimental techniques were used to determine the structure:

X-RAY DIFFRACTION

The reported resolution of this entry is 3.20 Å.

Percentile scores (ranging between 0-100) for global validation metrics of the entry are shown in the following graphic. The table shows the number of entries on which the scores are based.



Metric	Whole archive (#Entries)	Similar resolution (#Entries, resolution range(Å))
R_{free}	100719	1015 (3.22-3.18)
Clashscore	112137	1009 (3.20-3.20)
Ramachandran outliers	110173	1118 (3.22-3.18)
Sidechain outliers	110143	1117 (3.22-3.18)
RSRZ outliers	101464	1020 (3.22-3.18)

The table below summarises the geometric issues observed across the polymeric chains and their fit to the electron density. The red, orange, yellow and green segments on the lower bar indicate the fraction of residues that contain outliers for ≥ 3 , 2, 1 and 0 types of geometric quality criteria. A grey segment represents the fraction of residues that are not modelled. The numeric value for each fraction is indicated below the corresponding segment, with a dot representing fractions $\leq 5\%$. The upper red bar (where present) indicates the fraction of residues that have poor fit to the electron density. The numeric value is given above the bar.

Mol	Chain	Length	Quality of chain
1	L	281	
2	M	314	
3	H	260	

The following table lists non-polymeric compounds, carbohydrate monomers and non-standard residues in protein, DNA, RNA chains that are outliers for geometric or electron-density-fit criteria:

Mol	Type	Chain	Res	Chirality	Geometry	Clashes	Electron density
10	CDL	M	800	-	-	-	X
5	BCL	L	501	X	-	-	-
5	BCL	M	501	X	-	-	X
6	BPH	M	503	X	-	-	-
7	U10	L	504	-	-	-	X
8	LDA	H	703	-	-	-	X
8	LDA	L	709	-	-	-	X
8	LDA	M	701	-	-	-	X
8	LDA	M	704	-	-	-	X
9	SPN	M	600	-	-	-	X

2 Entry composition

There are 11 unique types of molecules in this entry. The entry contains 7296 atoms, of which 0 are hydrogens and 0 are deuteriums.

In the tables below, the ZeroOcc column contains the number of atoms modelled with zero occupancy, the AltConf column contains the number of residues with at least one atom in alternate conformation and the Trace column contains the number of residues modelled with at most 2 atoms.

- Molecule 1 is a protein called Reaction center protein L chain.

Mol	Chain	Residues	Atoms					ZeroOcc	AltConf	Trace
1	L	281	Total	C	N	O	S	0	0	0
			2232	1507	356	361	8			

There is a discrepancy between the modelled and reference sequences:

Chain	Residue	Modelled	Actual	Comment	Reference
L	212	GLN	GLU	ENGINEERED	UNP P0C0Y8

- Molecule 2 is a protein called Reaction center protein M chain.

Mol	Chain	Residues	Atoms					ZeroOcc	AltConf	Trace
2	M	302	Total	C	N	O	S	0	0	0
			2408	1607	393	398	10			

There are 8 discrepancies between the modelled and reference sequences:

Chain	Residue	Modelled	Actual	Comment	Reference
M	44	ASP	ASN	ENGINEERED	UNP P0C0Y9
M	308	HIS	-	EXPRESSION TAG	UNP P0C0Y9
M	309	HIS	-	EXPRESSION TAG	UNP P0C0Y9
M	310	HIS	-	EXPRESSION TAG	UNP P0C0Y9
M	311	HIS	-	EXPRESSION TAG	UNP P0C0Y9
M	312	HIS	-	EXPRESSION TAG	UNP P0C0Y9
M	313	HIS	-	EXPRESSION TAG	UNP P0C0Y9
M	314	HIS	-	EXPRESSION TAG	UNP P0C0Y9

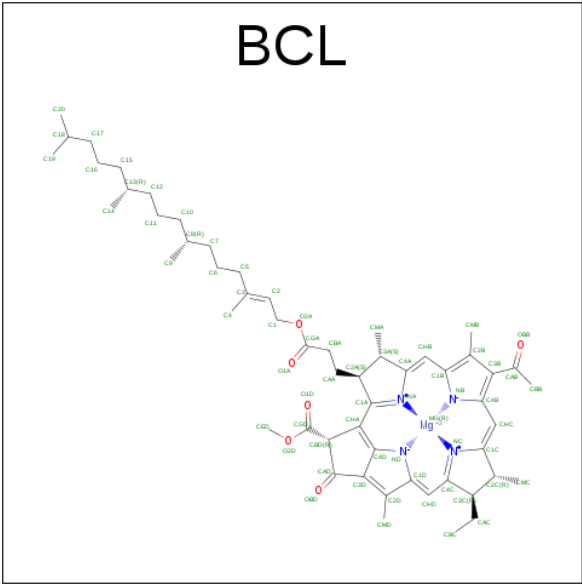
- Molecule 3 is a protein called Reaction center protein H chain.

Mol	Chain	Residues	Atoms					ZeroOcc	AltConf	Trace
3	H	240	Total	C	N	O	S	0	0	0
			1829	1169	314	337	9			

- Molecule 4 is FE (III) ION (three-letter code: FE) (formula: Fe).

Mol	Chain	Residues	Atoms				ZeroOcc	AltConf
4	M	1	Total	Fe			0	0
			1	1				

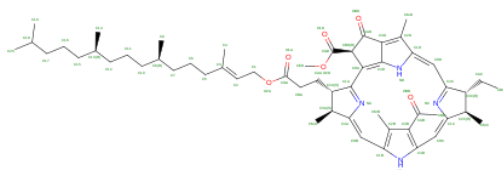
- Molecule 5 is BACTERIOCHLOROPHYLL A (three-letter code: BCL) (formula: C₅₅H₇₄MgN₄O₆).



Mol	Chain	Residues	Atoms					ZeroOcc	AltConf
5	L	1	Total	C	Mg	N	O	0	0
			66	55	1	4	6		
5	L	1	Total	C	Mg	N	O	0	0
			66	55	1	4	6		
5	M	1	Total	C	Mg	N	O	0	0
			66	55	1	4	6		
5	M	1	Total	C	Mg	N	O	0	0
			66	55	1	4	6		

- Molecule 6 is BACTERIOPHEOPHYTIN A (three-letter code: BPH) (formula: C₅₅H₇₆N₄O₆).

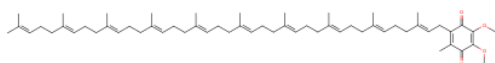
BPH



Mol	Chain	Residues	Atoms				ZeroOcc	AltConf
6	L	1	Total	C	N	O	0	0
			65	55	4	6		
6	M	1	Total	C	N	O	10	0
			65	55	4	6		

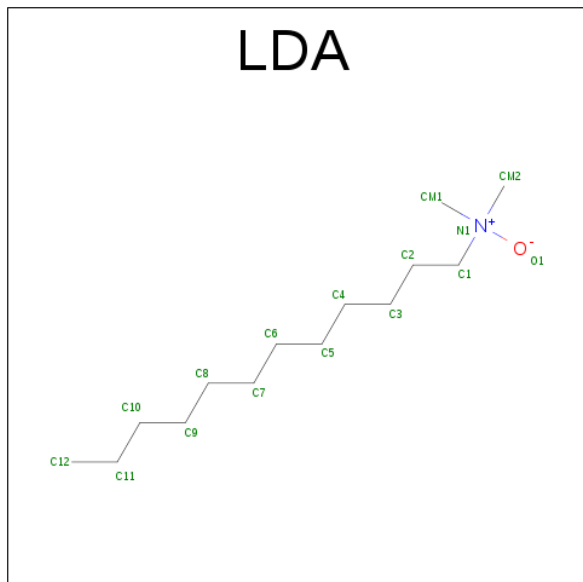
- Molecule 7 is UBIQUINONE-10 (three-letter code: U10) (formula: $C_{59}H_{90}O_4$).

U10



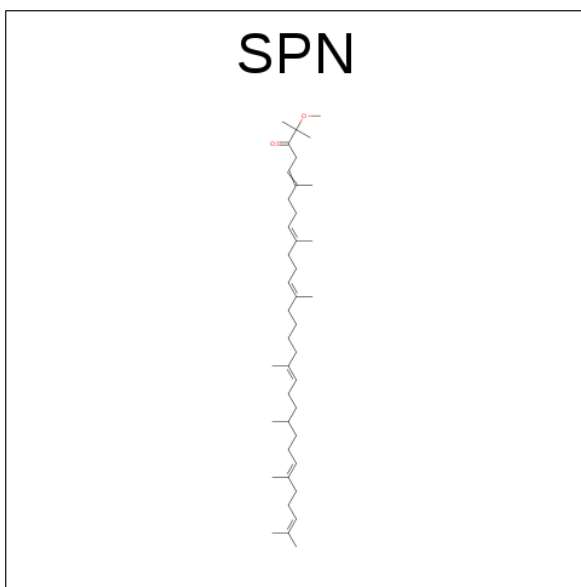
Mol	Chain	Residues	Atoms			ZeroOcc	AltConf
7	L	1	Total	C	O	0	0
			48	44	4		
7	M	1	Total	C	O	0	0
			48	44	4		

- Molecule 8 is LAURYL DIMETHYLAMINE-N-OXIDE (three-letter code: LDA) (formula: $C_{14}H_{31}NO$).



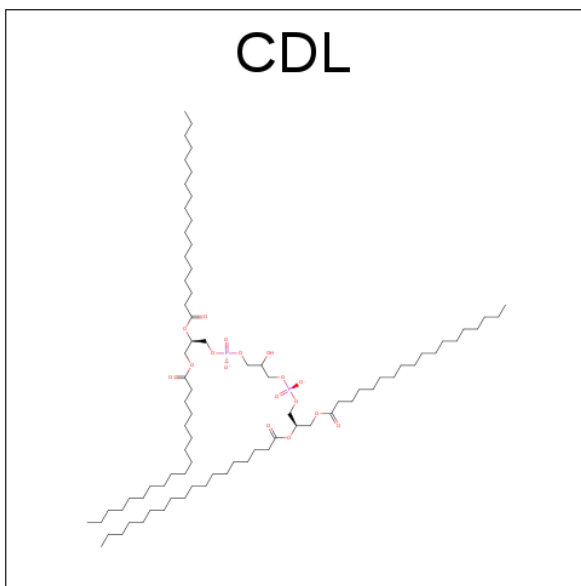
Mol	Chain	Residues	Atoms				ZeroOcc	AltConf
8	L	1	Total	C	N	O	0	0
			16	14	1	1		
8	M	1	Total	C	N	O	0	0
			16	14	1	1		
8	M	1	Total	C	N	O	0	0
			16	14	1	1		
8	H	1	Total	C	N	O	0	0
			16	14	1	1		

- Molecule 9 is SPEROIDENONE (three-letter code: SPN) (formula: $C_{41}H_{70}O_2$).



Mol	Chain	Residues	Atoms			ZeroOcc	AltConf
9	M	1	Total	C	O	0	0
			43	41	2		

- Molecule 10 is CARDIOLIPIN (three-letter code: CDL) (formula: $C_{81}H_{156}O_{17}P_2$).



Mol	Chain	Residues	Atoms				ZeroOcc	AltConf
10	M	1	Total	C	O	P	0	0
			81	62	17	2		

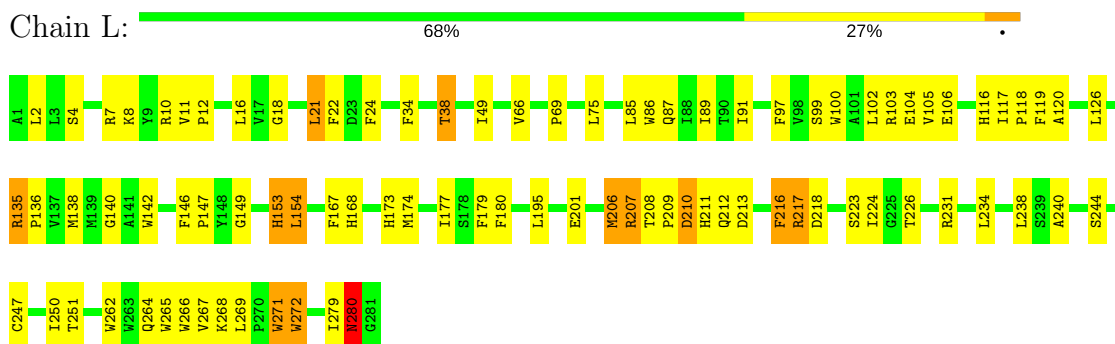
- Molecule 11 is water.

Mol	Chain	Residues	Atoms		ZeroOcc	AltConf
11	H	64	Total 64	O 64	0	0
11	L	40	Total 40	O 40	0	0
11	M	44	Total 44	O 44	0	0

3 Residue-property plots

These plots are drawn for all protein, RNA and DNA chains in the entry. The first graphic for a chain summarises the proportions of the various outlier classes displayed in the second graphic. The second graphic shows the sequence view annotated by issues in geometry and electron density. Residues are color-coded according to the number of geometric quality criteria for which they contain at least one outlier: green = 0, yellow = 1, orange = 2 and red = 3 or more. A red dot above a residue indicates a poor fit to the electron density ($RSRZ > 2$). Stretches of 2 or more consecutive residues without any outlier are shown as a green connector. Residues present in the sample, but not in the model, are shown in grey.

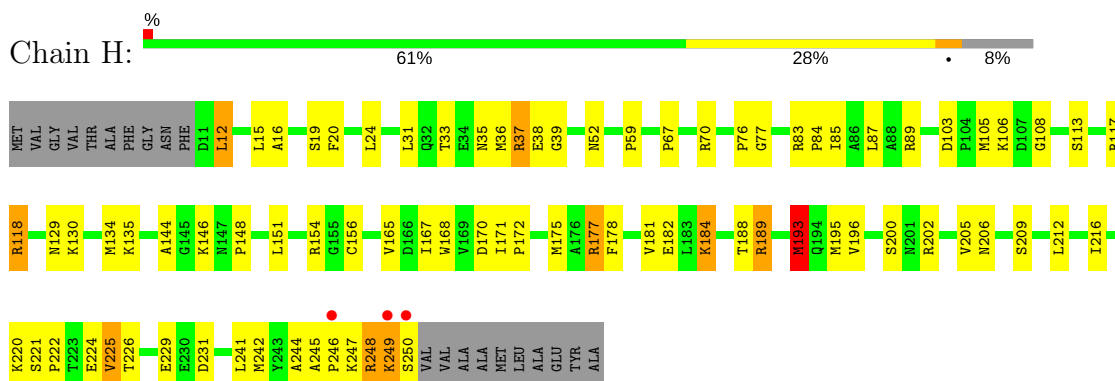
• Molecule 1: Reaction center protein L chain



• Molecule 2: Reaction center protein M chain



• Molecule 3: Reaction center protein H chain



4 Data and refinement statistics

Property	Value	Source
Space group	P 31 2 1	Depositor
Cell constants a, b, c, α , β , γ	141.50Å 141.50Å 187.00Å 90.00° 90.00° 120.00°	Depositor
Resolution (Å)	30.00 – 3.20 28.52 – 3.20	Depositor EDS
% Data completeness (in resolution range)	(Not available) (30.00-3.20) 89.9 (28.52-3.20)	Depositor EDS
R_{merge}	0.13	Depositor
R_{sym}	(Not available)	Depositor
$\langle I/\sigma(I) \rangle$ ¹	2.71 (at 3.17Å)	Xtriage
Refinement program	CNS	Depositor
R, R_{free}	0.199 , 0.203 0.205 , 0.209	Depositor DCC
R_{free} test set	2275 reflections (7.51%)	DCC
Wilson B-factor (Å ²)	65.3	Xtriage
Anisotropy	0.167	Xtriage
Bulk solvent k_{sol} (e/Å ³), B_{sol} (Å ²)	0.29 , 80.4	EDS
L-test for twinning ²	$\langle L \rangle = 0.50$, $\langle L^2 \rangle = 0.33$	Xtriage
Estimated twinning fraction	0.024 for -h,-k,l	Xtriage
F_o, F_c correlation	0.91	EDS
Total number of atoms	7296	wwPDB-VP
Average B, all atoms (Å ²)	51.0	wwPDB-VP

Xtriage's analysis on translational NCS is as follows: *The largest off-origin peak in the Patterson function is 2.89% of the height of the origin peak. No significant pseudotranslation is detected.*

¹Intensities estimated from amplitudes.

²Theoretical values of $\langle |L| \rangle$, $\langle L^2 \rangle$ for acentric reflections are 0.5, 0.333 respectively for untwinned datasets, and 0.375, 0.2 for perfectly twinned datasets.

5 Model quality ⓘ

5.1 Standard geometry ⓘ

Bond lengths and bond angles in the following residue types are not validated in this section: BCL, LDA, CDL, BPH, FE, SPN, U10

The Z score for a bond length (or angle) is the number of standard deviations the observed value is removed from the expected value. A bond length (or angle) with $|Z| > 5$ is considered an outlier worth inspection. RMSZ is the root-mean-square of all Z scores of the bond lengths (or angles).

Mol	Chain	Bond lengths		Bond angles	
		RMSZ	$\# Z > 5$	RMSZ	$\# Z > 5$
1	L	0.95	0/2320	1.08	13/3175 (0.4%)
2	M	1.08	3/2500 (0.1%)	1.17	21/3413 (0.6%)
3	H	0.95	2/1877 (0.1%)	1.25	21/2553 (0.8%)
All	All	1.00	5/6697 (0.1%)	1.17	55/9141 (0.6%)

Chiral center outliers are detected by calculating the chiral volume of a chiral center and verifying if the center is modelled as a planar moiety or with the opposite hand. A planarity outlier is detected by checking planarity of atoms in a peptide group, atoms in a mainchain group or atoms of a sidechain that are expected to be planar.

Mol	Chain	#Chirality outliers	#Planarity outliers
1	L	0	1

All (5) bond length outliers are listed below:

Mol	Chain	Res	Type	Atoms	Z	Observed(Å)	Ideal(Å)
3	H	76	PRO	C-N	-6.35	1.21	1.33
2	M	14	GLY	N-CA	5.91	1.54	1.46
3	H	77	GLY	N-CA	5.73	1.54	1.46
2	M	247	ARG	CG-CD	-5.41	1.38	1.51
2	M	301	HIS	CA-C	-5.14	1.39	1.52

The worst 5 of 55 bond angle outliers are listed below:

Mol	Chain	Res	Type	Atoms	Z	Observed(°)	Ideal(°)
3	H	248	ARG	CD-NE-CZ	13.08	141.92	123.60
2	M	247	ARG	NE-CZ-NH2	11.54	126.07	120.30
1	L	103	ARG	NE-CZ-NH1	11.02	125.81	120.30
3	H	250	SER	CA-C-O	-8.25	102.78	120.10
1	L	207	ARG	NE-CZ-NH2	7.67	124.13	120.30

There are no chirality outliers.

All (1) planarity outliers are listed below:

Mol	Chain	Res	Type	Group
1	L	280	ASN	Mainchain

5.2 Too-close contacts ⓘ

In the following table, the Non-H and H(model) columns list the number of non-hydrogen atoms and hydrogen atoms in the chain respectively. The H(added) column lists the number of hydrogen atoms added and optimized by MolProbity. The Clashes column lists the number of clashes within the asymmetric unit, whereas Symm-Clashes lists symmetry related clashes.

Mol	Chain	Non-H	H(model)	H(added)	Clashes	Symm-Clashes
1	L	2232	0	2189	79	0
2	M	2408	0	2319	86	0
3	H	1829	0	1836	46	0
4	M	1	0	0	0	0
5	L	132	0	148	16	0
5	M	132	0	148	19	0
6	L	65	0	76	2	0
6	M	65	0	76	1	0
7	L	48	0	63	7	0
7	M	48	0	63	6	0
8	H	16	0	31	4	0
8	L	16	0	31	3	0
8	M	32	0	62	4	0
9	M	43	0	69	1	0
10	M	81	0	106	1	0
11	H	64	0	0	3	0
11	L	40	0	0	1	0
11	M	44	0	0	3	0
All	All	7296	0	7217	223	0

The all-atom clashscore is defined as the number of clashes found per 1000 atoms (including hydrogen atoms). The all-atom clashscore for this structure is 16.

The worst 5 of 223 close contacts within the same asymmetric unit are listed below, sorted by their clash magnitude.

Atom-1	Atom-2	Interatomic distance (Å)	Clash overlap (Å)
2:M:13:ARG:HD3	2:M:35:PHE:CD2	1.72	1.23
2:M:13:ARG:CD	2:M:35:PHE:CD2	2.43	1.02

Continued on next page...

Continued from previous page...

Atom-1	Atom-2	Interatomic distance (Å)	Clash overlap (Å)
2:M:13:ARG:HD3	2:M:35:PHE:CE2	1.94	1.00
3:H:33:THR:O	3:H:59:PRO:HG3	1.69	0.91
1:L:34:PHE:O	1:L:38:THR:HG23	1.71	0.89

There are no symmetry-related clashes.

5.3 Torsion angles [i](#)

5.3.1 Protein backbone [i](#)

In the following table, the Percentiles column shows the percent Ramachandran outliers of the chain as a percentile score with respect to all X-ray entries followed by that with respect to entries of similar resolution.

The Analysed column shows the number of residues for which the backbone conformation was analysed, and the total number of residues.

Mol	Chain	Analysed	Favoured	Allowed	Outliers	Percentiles	
1	L	279/281 (99%)	262 (94%)	16 (6%)	1 (0%)	38	77
2	M	300/314 (96%)	285 (95%)	14 (5%)	1 (0%)	44	81
3	H	238/260 (92%)	229 (96%)	9 (4%)	0	100	100
All	All	817/855 (96%)	776 (95%)	39 (5%)	2 (0%)	51	86

All (2) Ramachandran outliers are listed below:

Mol	Chain	Res	Type
2	M	301	HIS
1	L	210	ASP

5.3.2 Protein sidechains [i](#)

In the following table, the Percentiles column shows the percent sidechain outliers of the chain as a percentile score with respect to all X-ray entries followed by that with respect to entries of similar resolution.

The Analysed column shows the number of residues for which the sidechain conformation was analysed, and the total number of residues.

Mol	Chain	Analysed	Rotameric	Outliers	Percentiles	
1	L	220/220 (100%)	208 (94%)	12 (6%)	25	64
2	M	236/247 (96%)	227 (96%)	9 (4%)	38	74
3	H	195/208 (94%)	184 (94%)	11 (6%)	25	64
All	All	651/675 (96%)	619 (95%)	32 (5%)	29	68

5 of 32 residues with a non-rotameric sidechain are listed below:

Mol	Chain	Res	Type
2	M	144	LYS
2	M	204	LEU
3	H	225	VAL
2	M	196	LEU
2	M	216	PHE

Some sidechains can be flipped to improve hydrogen bonding and reduce clashes. All (3) such sidechains are listed below:

Mol	Chain	Res	Type
1	L	280	ASN
2	M	4	GLN
2	M	188	ASN

5.3.3 RNA ⓘ

There are no RNA molecules in this entry.

5.4 Non-standard residues in protein, DNA, RNA chains ⓘ

There are no non-standard protein/DNA/RNA residues in this entry.

5.5 Carbohydrates ⓘ

There are no carbohydrates in this entry.

5.6 Ligand geometry ⓘ

Of 15 ligands modelled in this entry, 1 is monoatomic - leaving 14 for Mogul analysis.

In the following table, the Counts columns list the number of bonds (or angles) for which Mogul statistics could be retrieved, the number of bonds (or angles) that are observed in the model and

the number of bonds (or angles) that are defined in the chemical component dictionary. The Link column lists molecule types, if any, to which the group is linked. The Z score for a bond length (or angle) is the number of standard deviations the observed value is removed from the expected value. A bond length (or angle) with $|Z| > 2$ is considered an outlier worth inspection. RMSZ is the root-mean-square of all Z scores of the bond lengths (or angles).

Mol	Type	Chain	Res	Link	Bond lengths			Bond angles		
					Counts	RMSZ	# Z > 2	Counts	RMSZ	# Z > 2
8	LDA	H	703	-	13,15,15	2.83	2 (15%)	14,17,17	0.83	1 (7%)
5	BCL	L	501	1	55,74,74	1.48	7 (12%)	65,115,115	1.93	11 (16%)
5	BCL	L	502	1	55,74,74	1.63	8 (14%)	65,115,115	1.90	11 (16%)
6	BPH	L	503	-	65,70,70	1.29	9 (13%)	75,101,101	1.92	20 (26%)
7	U10	L	504	-	48,48,63	2.09	20 (41%)	58,61,79	0.98	3 (5%)
8	LDA	L	709	-	13,15,15	2.76	1 (7%)	14,17,17	0.69	0
5	BCL	M	501	2	55,74,74	1.73	8 (14%)	65,115,115	2.38	23 (35%)
5	BCL	M	502	2	55,74,74	1.24	6 (10%)	65,115,115	1.59	11 (16%)
6	BPH	M	503	-	65,70,70	1.31	7 (10%)	75,101,101	2.29	26 (34%)
7	U10	M	504	-	48,48,63	2.38	20 (41%)	58,61,79	1.25	7 (12%)
9	SPN	M	600	-	40,42,42	3.60	18 (45%)	48,52,52	2.60	16 (33%)
8	LDA	M	701	-	13,15,15	2.93	1 (7%)	14,17,17	0.49	0
8	LDA	M	704	-	13,15,15	2.33	1 (7%)	14,17,17	0.68	0
10	CDL	M	800	-	80,80,99	0.48	0	82,92,111	0.96	6 (7%)

In the following table, the Chirals column lists the number of chiral outliers, the number of chiral centers analysed, the number of these observed in the model and the number defined in the chemical component dictionary. Similar counts are reported in the Torsion and Rings columns. '-' means no outliers of that kind were identified.

Mol	Type	Chain	Res	Link	Chirals	Torsions	Rings
8	LDA	H	703	-	-	0/13/13/13	0/0/0/0
5	BCL	L	501	1	1/1/21/25	0/37/137/137	0/0/9/9
5	BCL	L	502	1	-	0/37/137/137	0/0/9/9
6	BPH	L	503	-	-	0/54/105/105	0/1/6/6
7	U10	L	504	-	-	0/45/69/87	0/1/1/1
8	LDA	L	709	-	-	0/13/13/13	0/0/0/0
5	BCL	M	501	2	2/2/21/25	1/37/137/137	0/0/9/9
5	BCL	M	502	2	-	0/37/137/137	0/0/9/9
6	BPH	M	503	-	1/1/18/22	0/54/105/105	0/1/6/6
7	U10	M	504	-	-	0/45/69/87	0/1/1/1
9	SPN	M	600	-	-	0/50/51/51	0/0/0/0
8	LDA	M	701	-	-	0/13/13/13	0/0/0/0

Continued on next page...

Continued from previous page...

Mol	Type	Chain	Res	Link	Chirals	Torsions	Rings
8	LDA	M	704	-	-	0/13/13/13	0/0/0/0
10	CDL	M	800	-	-	0/91/91/110	0/0/0/0

The worst 5 of 108 bond length outliers are listed below:

Mol	Chain	Res	Type	Atoms	Z	Observed(Å)	Ideal(Å)
8	M	701	LDA	O1-N1	-10.41	1.21	1.42
8	H	703	LDA	O1-N1	-9.86	1.22	1.42
8	L	709	LDA	O1-N1	-9.84	1.22	1.42
8	M	704	LDA	O1-N1	-8.28	1.25	1.42
7	M	504	U10	C27-C28	-7.02	1.26	1.50

The worst 5 of 135 bond angle outliers are listed below:

Mol	Chain	Res	Type	Atoms	Z	Observed(°)	Ideal(°)
5	L	501	BCL	O1D-CGD-CBD	-6.36	113.17	124.60
5	M	501	BCL	C4-C3-C5	-5.79	105.23	115.29
6	L	503	BPH	O2A-CGA-O1A	-5.16	110.74	123.55
9	M	600	SPN	C6-C5-C4	-5.11	110.64	121.10
9	M	600	SPN	C17-C18-C19	-4.82	111.24	121.10

All (4) chirality outliers are listed below:

Mol	Chain	Res	Type	Atom
5	M	501	BCL	C8
5	M	501	BCL	C13
6	M	503	BPH	C8
5	L	501	BCL	C13

All (1) torsion outliers are listed below:

Mol	Chain	Res	Type	Atoms
5	M	501	BCL	C1-C2-C3-C4

There are no ring outliers.

13 monomers are involved in 58 short contacts:

Mol	Chain	Res	Type	Clashes	Symm-Clashes
8	H	703	LDA	4	0
5	L	501	BCL	7	0
5	L	502	BCL	11	0

Continued on next page...

Continued from previous page...

Mol	Chain	Res	Type	Clashes	Symm-Clashes
6	L	503	BPH	2	0
7	L	504	U10	7	0
8	L	709	LDA	3	0
5	M	501	BCL	9	0
5	M	502	BCL	12	0
6	M	503	BPH	1	0
7	M	504	U10	6	0
9	M	600	SPN	1	0
8	M	701	LDA	4	0
10	M	800	CDL	1	0

5.7 Other polymers [i](#)

There are no such residues in this entry.

5.8 Polymer linkage issues [i](#)

There are no chain breaks in this entry.

6 Fit of model and data [i](#)

6.1 Protein, DNA and RNA chains [i](#)

In the following table, the column labelled ‘#RSRZ> 2’ contains the number (and percentage) of RSRZ outliers, followed by percent RSRZ outliers for the chain as percentile scores relative to all X-ray entries and entries of similar resolution. The OWAB column contains the minimum, median, 95th percentile and maximum values of the occupancy-weighted average B-factor per residue. The column labelled ‘Q< 0.9’ lists the number of (and percentage) of residues with an average occupancy less than 0.9.

Mol	Chain	Analysed	<RSRZ>	#RSRZ>2	OWAB(Å ²)	Q<0.9
1	L	281/281 (100%)	-0.64	0 100 100	26, 44, 79, 100	0
2	M	302/314 (96%)	-0.56	1 (0%) 93 92	25, 52, 87, 106	0
3	H	240/260 (92%)	-0.47	3 (1%) 77 65	29, 49, 70, 110	0
All	All	823/855 (96%)	-0.56	4 (0%) 90 85	25, 48, 83, 110	0

All (4) RSRZ outliers are listed below:

Mol	Chain	Res	Type	RSRZ
3	H	250	SER	5.0
2	M	1	ALA	4.8
3	H	249	LYS	3.7
3	H	246	PRO	2.1

6.2 Non-standard residues in protein, DNA, RNA chains [i](#)

There are no non-standard protein/DNA/RNA residues in this entry.

6.3 Carbohydrates [i](#)

There are no carbohydrates in this entry.

6.4 Ligands [i](#)

In the following table, the Atoms column lists the number of modelled atoms in the group and the number defined in the chemical component dictionary. LLDF column lists the quality of electron density of the group with respect to its neighbouring residues in protein, DNA or RNA chains. The B-factors column lists the minimum, median, 95th percentile and maximum values of B factors of atoms in the group. The column labelled ‘Q< 0.9’ lists the number of atoms with occupancy less than 0.9.

Mol	Type	Chain	Res	Atoms	RSCC	RSR	LLDF	B-factors(\AA^2)	Q<0.9
7	U10	L	504	48/63	0.65	0.74	16.73	97,99,105,105	0
8	LDA	M	704	16/16	0.62	0.43	8.52	78,97,117,117	0
8	LDA	L	709	16/16	0.80	0.63	5.32	105,107,110,110	0
9	SPN	M	600	43/43	0.80	0.35	4.57	52,67,84,85	0
10	CDL	M	800	81/100	0.78	0.44	3.70	56,75,87,90	81
5	BCL	M	501	66/66	0.95	0.21	3.39	32,40,106,107	0
8	LDA	M	701	16/16	0.90	0.23	2.66	53,61,72,73	0
8	LDA	H	703	16/16	0.90	0.27	2.19	64,66,72,73	0
7	U10	M	504	48/63	0.94	0.20	1.71	36,40,77,78	0
6	BPH	L	503	65/65	0.96	0.17	1.31	31,40,48,49	0
6	BPH	M	503	65/65	0.94	0.18	0.83	42,55,69,73	10
5	BCL	M	502	66/66	0.97	0.16	0.16	26,31,64,69	0
5	BCL	L	502	66/66	0.97	0.15	0.01	22,27,51,52	0
5	BCL	L	501	66/66	0.96	0.15	-0.03	17,25,56,59	0
4	FE	M	500	1/1	0.99	0.07	-2.35	35,35,35,35	0

6.5 Other polymers [i](#)

There are no such residues in this entry.