



Full wwPDB X-ray Structure Validation Report ⓘ

Jan 15, 2018 – 11:26 AM EST

PDB ID : 4DTW
Title : cytochrome P450 BM3h-8C8 MRI sensor bound to serotonin
Authors : Brustad, E.M.; Lelyveld, V.S.; Snow, C.D.; Crook, N.; Martinez, F.M.; Scholl, T.J.; Jasanoff, A.; Arnold, F.H.
Deposited on : 2012-02-21
Resolution : 1.80 Å(reported)

This is a Full wwPDB X-ray Structure Validation Report for a publicly released PDB entry.

We welcome your comments at validation@mail.wwpdb.org

A user guide is available at

<http://wwpdb.org/validation/2016/XrayValidationReportHelp>

with specific help available everywhere you see the ⓘ symbol.

The following versions of software and data (see [references ⓘ](#)) were used in the production of this report:

MolProbity : 4.02b-467
Mogul : 1.7.2 (RC1), CSD as538be (2017)
Xtriage (Phenix) : 1.9-1692
EDS : rb-20030736
Percentile statistics : 20161228.v01 (using entries in the PDB archive December 28th 2016)
Refmac : 5.8.0135
CCP4 : 6.5.0
Ideal geometry (proteins) : Engh & Huber (2001)
Ideal geometry (DNA, RNA) : Parkinson et al. (1996)
Validation Pipeline (wwPDB-VP) : rb-20030736

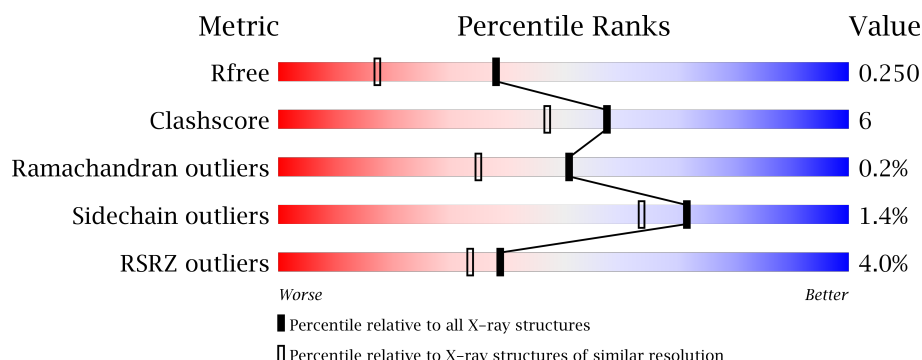
1 Overall quality at a glance

The following experimental techniques were used to determine the structure:

X-RAY DIFFRACTION

The reported resolution of this entry is 1.80 Å.

Percentile scores (ranging between 0-100) for global validation metrics of the entry are shown in the following graphic. The table shows the number of entries on which the scores are based.



Metric	Whole archive (#Entries)	Similar resolution (#Entries, resolution range(Å))
R_{free}	100719	4827 (1.80-1.80)
Clashscore	112137	5742 (1.80-1.80)
Ramachandran outliers	110173	5676 (1.80-1.80)
Sidechain outliers	110143	5675 (1.80-1.80)
RSRZ outliers	101464	4906 (1.80-1.80)

The table below summarises the geometric issues observed across the polymeric chains and their fit to the electron density. The red, orange, yellow and green segments on the lower bar indicate the fraction of residues that contain outliers for ≥ 3 , 2, 1 and 0 types of geometric quality criteria. A grey segment represents the fraction of residues that are not modelled. The numeric value for each fraction is indicated below the corresponding segment, with a dot representing fractions $\leq 5\%$. The upper red bar (where present) indicates the fraction of residues that have poor fit to the electron density. The numeric value is given above the bar.

Mol	Chain	Length	Quality of chain
1	A	469	<div> <div>3%</div> <div>82%</div> <div>15%</div> <div>•</div> </div>
1	B	469	<div> <div>4%</div> <div>82%</div> <div>14%</div> <div>••</div> </div>

The following table lists non-polymeric compounds, carbohydrate monomers and non-standard residues in protein, DNA, RNA chains that are outliers for geometric or electron-density-fit criteria:

Mol	Type	Chain	Res	Chirality	Geometry	Clashes	Electron density
3	SRO	A	501	-	-	-	X
3	SRO	B	502	-	-	-	X

2 Entry composition

There are 5 unique types of molecules in this entry. The entry contains 8477 atoms, of which 0 are hydrogens and 0 are deuteriums.

In the tables below, the ZeroOcc column contains the number of atoms modelled with zero occupancy, the AltConf column contains the number of residues with at least one atom in alternate conformation and the Trace column contains the number of residues modelled with at most 2 atoms.

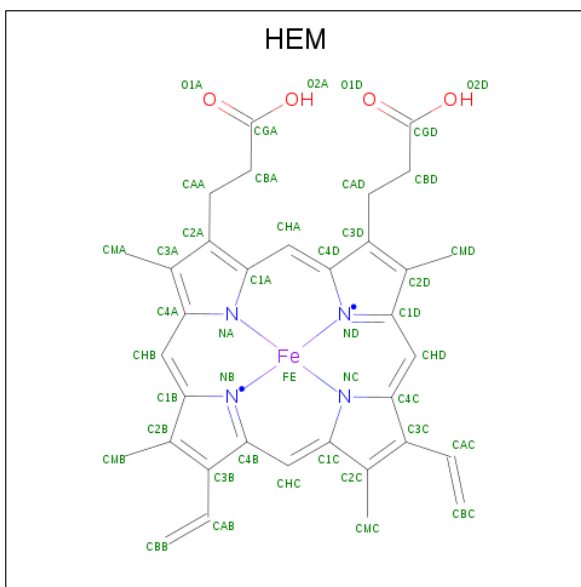
- Molecule 1 is a protein called Cytochrome P450 BM3 variant 8C8.

Mol	Chain	Residues	Atoms					ZeroOcc	AltConf	Trace
1	B	453	Total	C	N	O	S	0	1	0
			3654	2332	622	682	18			
1	A	453	Total	C	N	O	S	0	1	0
			3654	2332	622	682	18			

There are 22 discrepancies between the modelled and reference sequences:

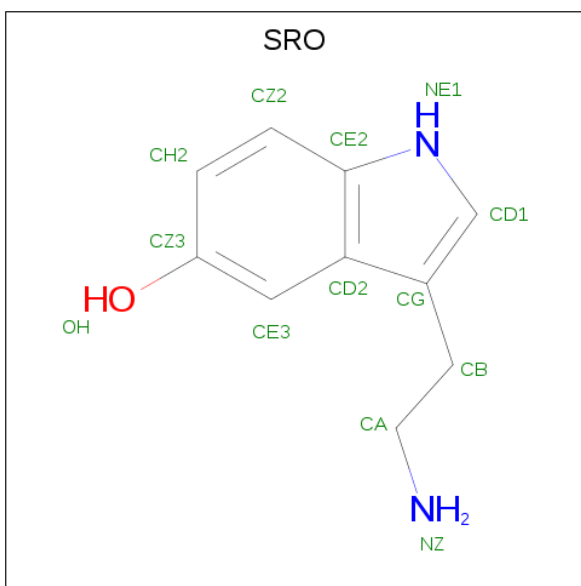
Chain	Residue	Modelled	Actual	Comment	Reference
B	75	PRO	LEU	ENGINEERED MUTATION	UNP P14779
B	189	ARG	GLN	ENGINEERED MUTATION	UNP P14779
B	263	ALA	ILE	ENGINEERED MUTATION	UNP P14779
B	268	ALA	THR	ENGINEERED MUTATION	UNP P14779
B	286	GLU	VAL	ENGINEERED MUTATION	UNP P14779
B	464	HIS	-	EXPRESSION TAG	UNP P14779
B	465	HIS	-	EXPRESSION TAG	UNP P14779
B	466	HIS	-	EXPRESSION TAG	UNP P14779
B	467	HIS	-	EXPRESSION TAG	UNP P14779
B	468	HIS	-	EXPRESSION TAG	UNP P14779
B	469	HIS	-	EXPRESSION TAG	UNP P14779
A	75	PRO	LEU	ENGINEERED MUTATION	UNP P14779
A	189	ARG	GLN	ENGINEERED MUTATION	UNP P14779
A	263	ALA	ILE	ENGINEERED MUTATION	UNP P14779
A	268	ALA	THR	ENGINEERED MUTATION	UNP P14779
A	286	GLU	VAL	ENGINEERED MUTATION	UNP P14779
A	464	HIS	-	EXPRESSION TAG	UNP P14779
A	465	HIS	-	EXPRESSION TAG	UNP P14779
A	466	HIS	-	EXPRESSION TAG	UNP P14779
A	467	HIS	-	EXPRESSION TAG	UNP P14779
A	468	HIS	-	EXPRESSION TAG	UNP P14779
A	469	HIS	-	EXPRESSION TAG	UNP P14779

- Molecule 2 is PROTOPORPHYRIN IX CONTAINING FE (three-letter code: HEM) (formula: $C_{34}H_{32}FeN_4O_4$).



Mol	Chain	Residues	Atoms					ZeroOcc	AltConf
2	B	1	Total 43	C 34	Fe 1	N 4	O 4	0	0
2	A	1	Total 43	C 34	Fe 1	N 4	O 4	0	0

- Molecule 3 is SEROTONIN (three-letter code: SRO) (formula: $\text{C}_{10}\text{H}_{12}\text{N}_2\text{O}$).



Mol	Chain	Residues	Atoms				ZeroOcc	AltConf
3	B	1	Total 13	C 10	N 2	O 1	0	0
3	A	1	Total 13	C 10	N 2	O 1	0	0

- Molecule 4 is MAGNESIUM ION (three-letter code: MG) (formula: Mg).

Mol	Chain	Residues	Atoms		ZeroOcc	AltConf
4	B	1	Total 1	Mg 1	0	0

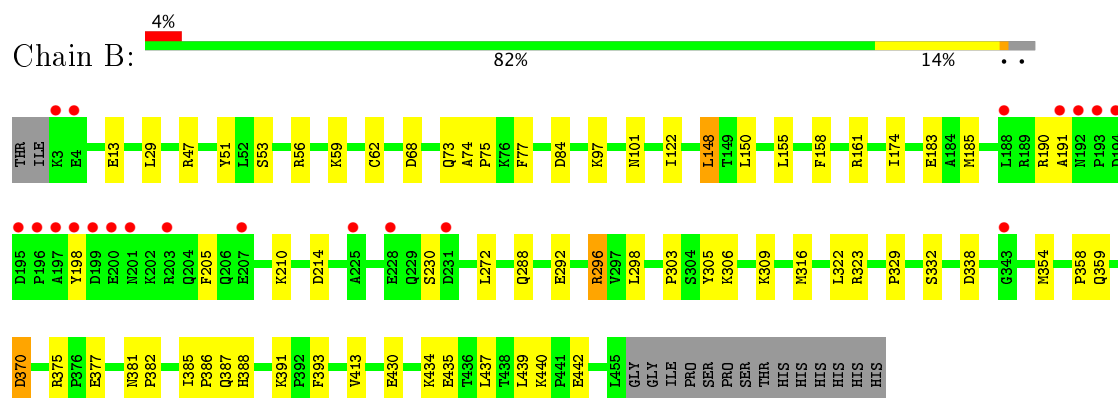
- Molecule 5 is water.

Mol	Chain	Residues	Atoms		ZeroOcc	AltConf
5	B	533	Total 533	O 533	0	0
5	A	523	Total 523	O 523	0	0

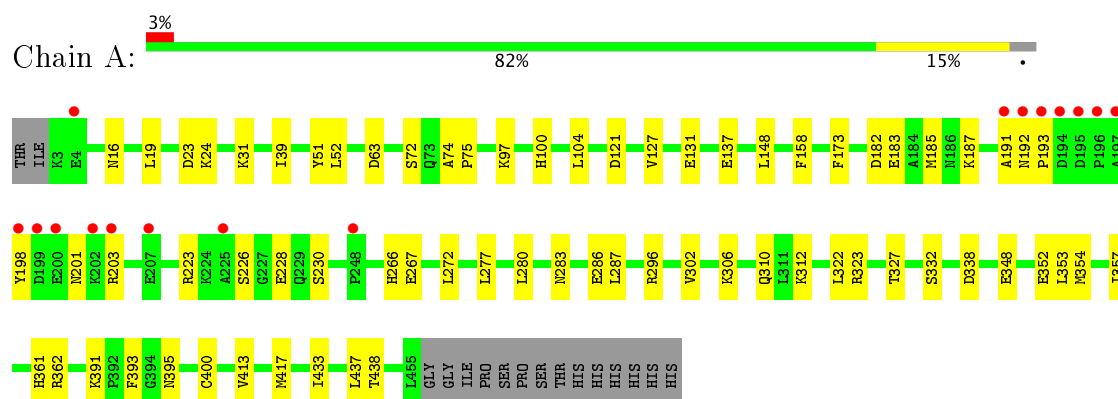
3 Residue-property plots [i](#)

These plots are drawn for all protein, RNA and DNA chains in the entry. The first graphic for a chain summarises the proportions of the various outlier classes displayed in the second graphic. The second graphic shows the sequence view annotated by issues in geometry and electron density. Residues are color-coded according to the number of geometric quality criteria for which they contain at least one outlier: green = 0, yellow = 1, orange = 2 and red = 3 or more. A red dot above a residue indicates a poor fit to the electron density ($RSRZ > 2$). Stretches of 2 or more consecutive residues without any outlier are shown as a green connector. Residues present in the sample, but not in the model, are shown in grey.

• Molecule 1: Cytochrome P450 BM3 variant 8C8



• Molecule 1: Cytochrome P450 BM3 variant 8C8



4 Data and refinement statistics

Property	Value	Source
Space group	P 1 21 1	Depositor
Cell constants a, b, c, α , β , γ	58.61Å 146.25Å 64.06Å 90.00° 97.51° 90.00°	Depositor
Resolution (Å)	38.87 – 1.80 38.88 – 1.80	Depositor EDS
% Data completeness (in resolution range)	92.3 (38.87-1.80) 92.3 (38.88-1.80)	Depositor EDS
R_{merge}	(Not available)	Depositor
R_{sym}	0.08	Depositor
$\langle I/\sigma(I) \rangle$ ¹	1.92 (at 1.81Å)	Xtriage
Refinement program	REFMAC 5.5.0109	Depositor
R, R_{free}	0.192 , 0.254 0.191 , 0.250	Depositor DCC
R_{free} test set	4678 reflections (5.41%)	DCC
Wilson B-factor (Å ²)	21.5	Xtriage
Anisotropy	0.016	Xtriage
Bulk solvent k_{sol} (e/Å ³), B_{sol} (Å ²)	0.35 , 47.9	EDS
L-test for twinning ²	$\langle L \rangle = 0.46$, $\langle L^2 \rangle = 0.29$	Xtriage
Estimated twinning fraction	No twinning to report.	Xtriage
F_o, F_c correlation	0.95	EDS
Total number of atoms	8477	wwPDB-VP
Average B, all atoms (Å ²)	22.0	wwPDB-VP

Xtriage's analysis on translational NCS is as follows: *The largest off-origin peak in the Patterson function is 6.90% of the height of the origin peak. No significant pseudotranslation is detected.*

¹Intensities estimated from amplitudes.

²Theoretical values of $\langle |L| \rangle$, $\langle L^2 \rangle$ for acentric reflections are 0.5, 0.333 respectively for untwinned datasets, and 0.375, 0.2 for perfectly twinned datasets.

5 Model quality [i](#)

5.1 Standard geometry [i](#)

Bond lengths and bond angles in the following residue types are not validated in this section: HEM, MG, SRO

The Z score for a bond length (or angle) is the number of standard deviations the observed value is removed from the expected value. A bond length (or angle) with $|Z| > 5$ is considered an outlier worth inspection. RMSZ is the root-mean-square of all Z scores of the bond lengths (or angles).

Mol	Chain	Bond lengths		Bond angles	
		RMSZ	$\# Z > 5$	RMSZ	$\# Z > 5$
1	A	1.10	4/3743 (0.1%)	0.97	4/5060 (0.1%)
1	B	1.08	2/3743 (0.1%)	0.97	10/5060 (0.2%)
All	All	1.09	6/7486 (0.1%)	0.97	14/10120 (0.1%)

All (6) bond length outliers are listed below:

Mol	Chain	Res	Type	Atoms	Z	Observed(Å)	Ideal(Å)
1	B	393	PHE	CD1-CE1	5.53	1.50	1.39
1	A	393	PHE	CE2-CZ	5.40	1.47	1.37
1	A	352	GLU	CD-OE1	5.35	1.31	1.25
1	A	393	PHE	CE1-CZ	5.17	1.47	1.37
1	B	430	GLU	CG-CD	5.01	1.59	1.51
1	A	327	THR	CB-CG2	5.00	1.68	1.52

All (14) bond angle outliers are listed below:

Mol	Chain	Res	Type	Atoms	Z	Observed(°)	Ideal(°)
1	B	296	ARG	NE-CZ-NH1	9.15	124.88	120.30
1	B	316	MET	CG-SD-CE	8.70	114.12	100.20
1	A	63	ASP	CB-CG-OD1	7.09	124.68	118.30
1	B	323	ARG	NE-CZ-NH2	-5.79	117.40	120.30
1	B	68	ASP	CB-CG-OD2	-5.78	113.10	118.30
1	B	161	ARG	NE-CZ-NH2	-5.48	117.56	120.30
1	A	338	ASP	CB-CG-OD1	5.33	123.10	118.30
1	B	84	ASP	CB-CG-OD2	-5.32	113.51	118.30
1	A	323	ARG	NE-CZ-NH2	-5.30	117.65	120.30
1	B	84	ASP	CB-CG-OD1	5.09	122.88	118.30
1	A	362	ARG	NE-CZ-NH1	5.07	122.84	120.30
1	B	296	ARG	NE-CZ-NH2	-5.07	117.76	120.30
1	B	370	ASP	CB-CG-OD1	5.03	122.83	118.30

Continued on next page...

Continued from previous page...

Mol	Chain	Res	Type	Atoms	Z	Observed(°)	Ideal(°)
1	B	338	ASP	CB-CG-OD1	5.00	122.80	118.30

There are no chirality outliers.

There are no planarity outliers.

5.2 Too-close contacts

In the following table, the Non-H and H(model) columns list the number of non-hydrogen atoms and hydrogen atoms in the chain respectively. The H(added) column lists the number of hydrogen atoms added and optimized by MolProbity. The Clashes column lists the number of clashes within the asymmetric unit, whereas Symm-Clashes lists symmetry related clashes.

Mol	Chain	Non-H	H(model)	H(added)	Clashes	Symm-Clashes
1	A	3654	0	3612	39	2
1	B	3654	0	3612	42	0
2	A	43	0	30	3	0
2	B	43	0	30	1	0
3	A	13	0	11	2	0
3	B	13	0	11	1	0
4	B	1	0	0	0	0
5	A	523	0	0	10	7
5	B	533	0	0	7	8
All	All	8477	0	7306	83	9

The all-atom clashscore is defined as the number of clashes found per 1000 atoms (including hydrogen atoms). The all-atom clashscore for this structure is 6.

All (83) close contacts within the same asymmetric unit are listed below, sorted by their clash magnitude.

Atom-1	Atom-2	Interatomic distance (Å)	Clash overlap (Å)
1:B:185:MET:HE3	1:B:437:LEU:HD13	1.36	1.08
1:B:74:ALA:HB3	1:B:75:PRO:HD3	1.49	0.95
1:A:296:ARG:NH1	5:A:815:HOH:O	2.05	0.88
1:A:312:LYS:NZ	5:A:974:HOH:O	2.06	0.87
1:B:185:MET:HE3	1:B:437:LEU:CD1	2.04	0.87
1:B:185:MET:CE	1:B:437:LEU:HD13	2.12	0.77
1:B:387:GLN:HG2	1:B:388:HIS:CD2	2.22	0.75
1:A:223:ARG:HD3	1:A:228:GLU:HG2	1.71	0.72
1:B:332:SER:HB2	1:B:354:MET:SD	2.32	0.69
1:B:74:ALA:HB3	1:B:75:PRO:CD	2.23	0.68

Continued on next page...

Continued from previous page...

Atom-1	Atom-2	Interatomic distance (Å)	Clash overlap (Å)
1:B:434:LYS:HD3	1:B:440:LYS:HE3	1.77	0.65
1:A:121:ASP:OD2	5:A:1008:HOH:O	2.15	0.65
1:A:306:LYS:HG3	5:A:704:HOH:O	1.99	0.62
1:B:148:LEU:HD21	1:B:413:VAL:HG21	1.82	0.61
1:B:122:ILE:HD11	1:B:155:LEU:HD22	1.83	0.61
1:A:310:GLN:HG3	5:A:1019:HOH:O	2.01	0.60
1:A:272:LEU:HD13	1:A:322:LEU:HG	1.84	0.60
1:A:74:ALA:HB3	1:A:75:PRO:HD3	1.85	0.59
2:B:501:HEM:HBC2	2:B:501:HEM:HMC2	1.84	0.58
1:B:437:LEU:HG	3:B:502:SRO:NE1	2.21	0.56
1:B:272:LEU:HD13	1:B:322:LEU:HG	1.87	0.56
1:B:150:LEU:HD13	1:B:174:ILE:HD13	1.87	0.56
1:B:306:LYS:HG2	5:B:1133:HOH:O	2.08	0.54
1:A:198:TYR:HA	1:A:201:ASN:HD22	1.73	0.53
1:B:56:ARG:O	1:B:59:LYS:HG2	2.10	0.52
1:B:210:LYS:HG2	1:B:214:ASP:OD2	2.08	0.52
1:A:137:GLU:O	5:A:972:HOH:O	2.18	0.51
1:B:74:ALA:CB	1:B:75:PRO:HD3	2.30	0.50
1:B:434:LYS:HD3	1:B:440:LYS:CE	2.40	0.50
1:A:357:ILE:HG22	1:A:361:HIS:CE1	2.47	0.49
1:A:438:THR:HG22	3:A:501:SRO:NE1	2.27	0.49
1:B:434:LYS:HB2	1:B:442:GLU:HB2	1.93	0.49
1:B:53:SER:HB3	1:B:359:GLN:HB3	1.95	0.49
2:A:500:HEM:HMC2	2:A:500:HEM:HBC2	1.95	0.48
1:A:226:SER:OG	1:A:228:GLU:CD	2.52	0.47
1:B:288:GLN:NE2	1:B:292:GLU:OE2	2.47	0.47
1:B:370:ASP:OD2	1:B:375:ARG:NH1	2.37	0.47
1:A:391:LYS:HE2	1:A:395:ASN:HB2	1.95	0.47
1:A:266:HIS:CG	1:A:267:GLU:N	2.83	0.47
1:A:332:SER:HB2	1:A:354:MET:SD	2.55	0.47
1:A:277:LEU:HD22	1:A:417:MET:HE1	1.97	0.47
1:A:39:ILE:HA	1:A:51:TYR:O	2.14	0.47
1:A:198:TYR:HA	1:A:201:ASN:ND2	2.30	0.47
1:A:31:LYS:HE2	5:A:666:HOH:O	2.14	0.46
1:B:377:GLU:HG3	5:B:642:HOH:O	2.14	0.46
1:A:31:LYS:CE	5:A:666:HOH:O	2.64	0.46
1:B:377:GLU:CG	5:B:642:HOH:O	2.64	0.46
1:A:183:GLU:O	1:A:187:LYS:HG3	2.16	0.45
1:B:296:ARG:HD3	5:B:1004:HOH:O	2.16	0.45
1:A:413:VAL:O	1:A:417:MET:HG3	2.15	0.45
1:B:97:LYS:HE2	1:B:101:ASN:OD1	2.18	0.44

Continued on next page...

Continued from previous page...

Atom-1	Atom-2	Interatomic distance (Å)	Clash overlap (Å)
1:B:190:ARG:HD3	1:B:198:TYR:CZ	2.52	0.44
1:A:100:HIS:O	1:A:104:LEU:HB2	2.17	0.44
1:A:400:CYS:HA	2:A:500:HEM:CHA	2.47	0.44
1:B:385:ILE:HA	1:B:386:PRO:HD3	1.75	0.44
1:B:62:CYS:SG	1:B:391:LYS:HE2	2.58	0.43
1:B:329:PRO:O	1:B:358:PRO:HD3	2.18	0.43
1:A:127:VAL:O	1:A:131:GLU:HG2	2.19	0.43
1:B:185:MET:CE	1:B:437:LEU:HB2	2.48	0.43
1:B:305:TYR:CE1	1:B:309:LYS:HE3	2.53	0.43
1:A:52:LEU:HD11	1:A:353:LEU:HD13	2.01	0.43
1:B:73:GLN:HG3	1:B:77:PHE:CE2	2.54	0.43
1:A:438:THR:HG22	3:A:501:SRO:HNE1	1.83	0.43
1:B:29:LEU:HD13	1:B:51:TYR:CE1	2.54	0.43
1:A:16:ASN:HB3	1:A:19:LEU:HD12	2.01	0.42
1:B:183:GLU:HG2	1:B:205:PHE:CD1	2.54	0.42
1:A:192:ASN:HA	1:A:193:PRO:HD3	1.78	0.42
1:A:24:LYS:HE2	1:A:433:ILE:O	2.19	0.42
1:A:283:ASN:HB3	1:A:286:GLU:OE1	2.20	0.42
1:B:298:LEU:HD22	1:B:303:PRO:HB3	2.02	0.42
1:A:173:PHE:CD2	1:A:173:PHE:C	2.93	0.42
1:B:13:GLU:HG2	5:B:737:HOH:O	2.20	0.42
1:B:185:MET:HE3	1:B:437:LEU:CB	2.50	0.42
1:A:280:LEU:HD23	1:A:280:LEU:HA	1.78	0.42
1:A:72:SER:O	1:A:75:PRO:HD2	2.21	0.41
1:A:191:ALA:HB3	5:A:657:HOH:O	2.21	0.41
1:B:440:LYS:HD3	5:B:1132:HOH:O	2.19	0.41
1:A:400:CYS:HA	2:A:500:HEM:C4D	2.56	0.41
1:A:97:LYS:HB2	5:A:730:HOH:O	2.20	0.41
1:B:185:MET:HE3	1:B:437:LEU:HB2	2.03	0.41
1:B:435:GLU:HG2	1:B:439:LEU:CD2	2.51	0.40
1:B:381:ASN:HB2	5:B:1026:HOH:O	2.20	0.40
1:A:185:MET:HG3	1:A:437:LEU:HD23	2.02	0.40

All (9) symmetry-related close contacts are listed below. The label for Atom-2 includes the symmetry operator and encoded unit-cell translations to be applied.

Atom-1	Atom-2	Interatomic distance (Å)	Clash overlap (Å)
5:B:648:HOH:O	5:A:1096:HOH:O[2_556]	1.46	0.74
5:B:1102:HOH:O	5:A:967:HOH:O[2_556]	1.76	0.44
5:B:994:HOH:O	5:A:987:HOH:O[2_555]	1.98	0.22

Continued on next page...

Continued from previous page...

Atom-1	Atom-2	Interatomic distance (Å)	Clash overlap (Å)
5:B:876:HOH:O	5:A:1096:HOH:O[2_556]	1.98	0.22
5:A:994:HOH:O	5:A:1078:HOH:O[1_455]	1.99	0.21
1:A:23:ASP:OD2	5:B:976:HOH:O[2_646]	2.04	0.16
5:B:693:HOH:O	5:A:1085:HOH:O[2_656]	2.05	0.15
5:B:877:HOH:O	5:A:1000:HOH:O[2_556]	2.13	0.07
1:A:348:GLU:OE2	5:B:711:HOH:O[2_546]	2.19	0.01

5.3 Torsion angles [i](#)

5.3.1 Protein backbone [i](#)

In the following table, the Percentiles column shows the percent Ramachandran outliers of the chain as a percentile score with respect to all X-ray entries followed by that with respect to entries of similar resolution.

The Analysed column shows the number of residues for which the backbone conformation was analysed, and the total number of residues.

Mol	Chain	Analysed	Favoured	Allowed	Outliers	Percentiles	
1	A	452/469 (96%)	442 (98%)	10 (2%)	0	100	100
1	B	452/469 (96%)	441 (98%)	9 (2%)	2 (0%)	38	23
All	All	904/938 (96%)	883 (98%)	19 (2%)	2 (0%)	51	35

All (2) Ramachandran outliers are listed below:

Mol	Chain	Res	Type
1	B	191	ALA
1	B	382	PRO

5.3.2 Protein sidechains [i](#)

In the following table, the Percentiles column shows the percent sidechain outliers of the chain as a percentile score with respect to all X-ray entries followed by that with respect to entries of similar resolution.

The Analysed column shows the number of residues for which the sidechain conformation was analysed, and the total number of residues.

Mol	Chain	Analysed	Rotameric	Outliers	Percentiles	
1	A	395/409 (97%)	388 (98%)	7 (2%)	64	53

Continued on next page...

Continued from previous page...

Mol	Chain	Analysed	Rotameric	Outliers	Percentiles	
1	B	395/409 (97%)	391 (99%)	4 (1%)	80	75
All	All	790/818 (97%)	779 (99%)	11 (1%)	71	64

All (11) residues with a non-rotameric sidechain are listed below:

Mol	Chain	Res	Type
1	B	47	ARG
1	B	148	LEU
1	B	158	PHE
1	B	230	SER
1	A	148	LEU
1	A	158	PHE
1	A	182	ASP
1	A	203	ARG
1	A	230	SER
1	A	287	LEU
1	A	302	VAL

Some sidechains can be flipped to improve hydrogen bonding and reduce clashes. All (4) such sidechains are listed below:

Mol	Chain	Res	Type
1	B	201	ASN
1	B	387	GLN
1	A	201	ASN
1	A	319	ASN

5.3.3 RNA ⓘ

There are no RNA molecules in this entry.

5.4 Non-standard residues in protein, DNA, RNA chains ⓘ

There are no non-standard protein/DNA/RNA residues in this entry.

5.5 Carbohydrates ⓘ

There are no carbohydrates in this entry.

5.6 Ligand geometry

Of 5 ligands modelled in this entry, 1 is monoatomic - leaving 4 for Mogul analysis.

In the following table, the Counts columns list the number of bonds (or angles) for which Mogul statistics could be retrieved, the number of bonds (or angles) that are observed in the model and the number of bonds (or angles) that are defined in the Chemical Component Dictionary. The Link column lists molecule types, if any, to which the group is linked. The Z score for a bond length (or angle) is the number of standard deviations the observed value is removed from the expected value. A bond length (or angle) with $|Z| > 2$ is considered an outlier worth inspection. RMSZ is the root-mean-square of all Z scores of the bond lengths (or angles).

Mol	Type	Chain	Res	Link	Bond lengths			Bond angles		
					Counts	RMSZ	# Z > 2	Counts	RMSZ	# Z > 2
2	HEM	A	500	1,3	28,50,50	2.59	16 (57%)	17,82,82	2.56	10 (58%)
3	SRO	A	501	2	13,14,14	1.66	2 (15%)	12,19,19	1.65	3 (25%)
2	HEM	B	501	1,3	28,50,50	2.62	9 (32%)	17,82,82	1.99	6 (35%)
3	SRO	B	502	2	13,14,14	1.64	3 (23%)	12,19,19	1.67	4 (33%)

In the following table, the Chirals column lists the number of chiral outliers, the number of chiral centers analysed, the number of these observed in the model and the number defined in the Chemical Component Dictionary. Similar counts are reported in the Torsion and Rings columns. '-' means no outliers of that kind were identified.

Mol	Type	Chain	Res	Link	Chirals	Torsions	Rings
2	HEM	A	500	1,3	-	0/6/54/54	0/0/8/8
3	SRO	A	501	2	-	0/3/3/3	0/2/2/2
2	HEM	B	501	1,3	-	0/6/54/54	0/0/8/8
3	SRO	B	502	2	-	0/3/3/3	0/2/2/2

All (30) bond length outliers are listed below:

Mol	Chain	Res	Type	Atoms	Z	Observed(Å)	Ideal(Å)
2	A	500	HEM	C3B-C2B	-6.75	1.31	1.40
2	B	501	HEM	C3B-C2B	-6.70	1.31	1.40
2	B	501	HEM	C3C-C2C	-4.76	1.34	1.40
2	A	500	HEM	C3C-C2C	-2.73	1.36	1.40
2	A	500	HEM	C1A-CHA	-2.48	1.33	1.40
2	A	500	HEM	C2A-C3A	-2.02	1.31	1.37
2	A	500	HEM	C4C-NC	2.30	1.39	1.36
2	B	501	HEM	C4C-NC	2.35	1.39	1.36
3	B	502	SRO	CZ2-CH2	2.39	1.41	1.36
2	A	500	HEM	C4D-ND	2.56	1.39	1.36
2	A	500	HEM	C1A-NA	2.56	1.41	1.36

Continued on next page...

Continued from previous page...

Mol	Chain	Res	Type	Atoms	Z	Observed(Å)	Ideal(Å)
2	B	501	HEM	C1D-ND	2.58	1.41	1.36
2	B	501	HEM	C4D-ND	2.64	1.39	1.36
3	A	501	SRO	CZ2-CH2	2.67	1.42	1.36
3	B	502	SRO	CH2-CZ3	2.76	1.44	1.38
2	A	500	HEM	C4B-NB	2.76	1.42	1.36
2	A	500	HEM	CMB-C2B	2.80	1.57	1.51
2	A	500	HEM	C1D-ND	2.89	1.42	1.36
2	B	501	HEM	C1C-NC	2.93	1.40	1.36
2	A	500	HEM	CMA-C3A	2.96	1.57	1.51
2	A	500	HEM	C3B-CAB	3.00	1.53	1.47
2	A	500	HEM	CAD-C3D	3.15	1.58	1.52
3	B	502	SRO	CD2-CE2	3.39	1.51	1.42
2	A	500	HEM	C1B-NB	3.48	1.40	1.36
2	A	500	HEM	C3C-CAC	3.57	1.54	1.47
3	A	501	SRO	CD2-CE2	3.75	1.52	1.42
2	A	500	HEM	C3D-C2D	3.83	1.49	1.37
2	B	501	HEM	C3D-C2D	4.15	1.50	1.37
2	B	501	HEM	C3B-CAB	5.36	1.58	1.47
2	B	501	HEM	C3C-CAC	5.38	1.58	1.47

All (23) bond angle outliers are listed below:

Mol	Chain	Res	Type	Atoms	Z	Observed(°)	Ideal(°)
2	A	500	HEM	CBD-CAD-C3D	-4.93	103.07	112.47
2	A	500	HEM	CMA-C3A-C4A	-4.68	121.28	128.46
2	B	501	HEM	CBD-CAD-C3D	-4.29	104.29	112.47
2	B	501	HEM	CBA-CAA-C2A	-3.81	105.19	112.48
2	A	500	HEM	CMD-C2D-C1D	-3.66	122.84	128.46
2	B	501	HEM	CMA-C3A-C4A	-2.90	124.01	128.46
3	B	502	SRO	CZ3-CE3-CD2	-2.67	118.84	120.60
3	B	502	SRO	CH2-CZ2-CE2	-2.48	117.80	120.84
3	B	502	SRO	CA-CB-CG	-2.48	107.22	113.01
2	A	500	HEM	CAD-CBD-CGD	-2.41	108.54	112.66
3	A	501	SRO	CH2-CZ2-CE2	-2.37	117.93	120.84
2	B	501	HEM	C3C-C4C-NC	-2.28	106.63	110.94
2	A	500	HEM	CBA-CAA-C2A	-2.21	108.26	112.48
2	A	500	HEM	CAD-C3D-C2D	-2.01	123.27	129.00
2	B	501	HEM	CMA-C3A-C2A	2.11	128.92	124.94
2	A	500	HEM	C4C-C3C-C2C	2.19	108.42	106.90
3	B	502	SRO	CB-CA-NZ	2.27	130.27	114.54
3	A	501	SRO	CZ2-CH2-CZ3	2.28	122.75	120.14
2	A	500	HEM	CMD-C2D-C3D	2.33	129.34	124.94

Continued on next page...

Continued from previous page...

Mol	Chain	Res	Type	Atoms	Z	Observed(°)	Ideal(°)
2	A	500	HEM	CMB-C2B-C3B	2.77	130.03	124.89
2	B	501	HEM	C4C-C3C-C2C	2.93	108.94	106.90
2	A	500	HEM	CMA-C3A-C2A	3.05	130.69	124.94
3	A	501	SRO	CA-CB-CG	3.47	121.13	113.01

There are no chirality outliers.

There are no torsion outliers.

There are no ring outliers.

4 monomers are involved in 7 short contacts:

Mol	Chain	Res	Type	Clashes	Symm-Clashes
2	A	500	HEM	3	0
3	A	501	SRO	2	0
2	B	501	HEM	1	0
3	B	502	SRO	1	0

5.7 Other polymers [i](#)

There are no such residues in this entry.

5.8 Polymer linkage issues [i](#)

There are no chain breaks in this entry.

6 Fit of model and data

6.1 Protein, DNA and RNA chains

In the following table, the column labelled ‘#RSRZ> 2’ contains the number (and percentage) of RSRZ outliers, followed by percent RSRZ outliers for the chain as percentile scores relative to all X-ray entries and entries of similar resolution. The OWAB column contains the minimum, median, 95th percentile and maximum values of the occupancy-weighted average B-factor per residue. The column labelled ‘Q< 0.9’ lists the number of (and percentage) of residues with an average occupancy less than 0.9.

Mol	Chain	Analysed	<RSRZ>	#RSRZ>2	OWAB(Å ²)	Q<0.9
1	A	453/469 (96%)	0.14	16 (3%) 44 39	8, 19, 35, 58	0
1	B	453/469 (96%)	0.32	20 (4%) 35 30	8, 19, 39, 66	0
All	All	906/938 (96%)	0.23	36 (3%) 39 33	8, 19, 38, 66	0

All (36) RSRZ outliers are listed below:

Mol	Chain	Res	Type	RSRZ
1	B	196	PRO	6.6
1	B	225	ALA	5.3
1	B	191	ALA	5.3
1	B	195	ASP	4.7
1	B	198	TYR	4.7
1	A	196	PRO	4.7
1	B	197	ALA	4.4
1	A	198	TYR	4.2
1	A	200	GLU	4.0
1	B	200	GLU	3.9
1	A	193	PRO	3.8
1	B	199	ASP	3.7
1	A	192	ASN	3.4
1	A	194	ASP	3.3
1	B	4	GLU	3.3
1	B	201	ASN	3.2
1	A	191	ALA	3.1
1	B	343	GLY	2.9
1	A	199	ASP	2.9
1	B	207	GLU	2.8
1	B	192	ASN	2.8
1	B	3	LYS	2.6
1	A	207	GLU	2.6
1	B	228	GLU	2.5

Continued on next page...

Continued from previous page...

Mol	Chain	Res	Type	RSRZ
1	A	203	ARG	2.5
1	B	193	PRO	2.3
1	B	194	ASP	2.3
1	B	231	ASP	2.2
1	A	195	ASP	2.2
1	A	202	LYS	2.2
1	B	203	ARG	2.2
1	A	197	ALA	2.2
1	A	4	GLU	2.1
1	A	225	ALA	2.1
1	A	248	PRO	2.0
1	B	188	LEU	2.0

6.2 Non-standard residues in protein, DNA, RNA chains [i](#)

There are no non-standard protein/DNA/RNA residues in this entry.

6.3 Carbohydrates [i](#)

There are no carbohydrates in this entry.

6.4 Ligands [i](#)

In the following table, the Atoms column lists the number of modelled atoms in the group and the number defined in the chemical component dictionary. LLDF column lists the quality of electron density of the group with respect to its neighbouring residues in protein, DNA or RNA chains. The B-factors column lists the minimum, median, 95th percentile and maximum values of B factors of atoms in the group. The column labelled 'Q< 0.9' lists the number of atoms with occupancy less than 0.9.

Mol	Type	Chain	Res	Atoms	RSCC	RSR	LLDF	B-factors(Å ²)	Q<0.9
3	SRO	A	501	13/13	0.76	0.25	7.82	8,26,29,29	0
3	SRO	B	502	13/13	0.84	0.18	3.45	7,26,28,32	0
2	HEM	A	500	43/43	0.96	0.12	0.15	5,10,14,24	0
2	HEM	B	501	43/43	0.97	0.12	-0.35	5,9,14,15	0
4	MG	B	503	1/1	0.89	0.11	-	34,34,34,34	0

6.5 Other polymers [i](#)

There are no such residues in this entry.