



wwPDB X-ray Structure Validation Summary Report ⓘ

Feb 14, 2017 – 11:24 am GMT

PDB ID : 1DVJ
Title : CRYSTAL STRUCTURE OF OROTIDINE MONOPHOSPHATE DECARBOXYLASE COMPLEXED WITH 6-AZAUMP
Authors : Wu, N.; Mo, Y.; Gao, J.; Pai, E.F.
Deposited on : 2000-03-30
Resolution : 1.50 Å(reported)

This is a wwPDB X-ray Structure Validation Summary Report for a publicly released PDB entry.

We welcome your comments at validation@mail.wwpdb.org

A user guide is available at

<http://wwpdb.org/validation/2016/XrayValidationReportHelp>

with specific help available everywhere you see the ⓘ symbol.

The following versions of software and data (see [references ⓘ](#)) were used in the production of this report:

MolProbity : 4.02b-467
Mogul : 1.7.2 (RC1), CSD as538be (2017)
Xtriage (Phenix) : 1.9-1692
EDS : trunk28620
Percentile statistics : 20161228.v01 (using entries in the PDB archive December 28th 2016)
Refmac : 5.8.0135
CCP4 : 6.5.0
Ideal geometry (proteins) : Engh & Huber (2001)
Ideal geometry (DNA, RNA) : Parkinson et al. (1996)
Validation Pipeline (wwPDB-VP) : recalc28949

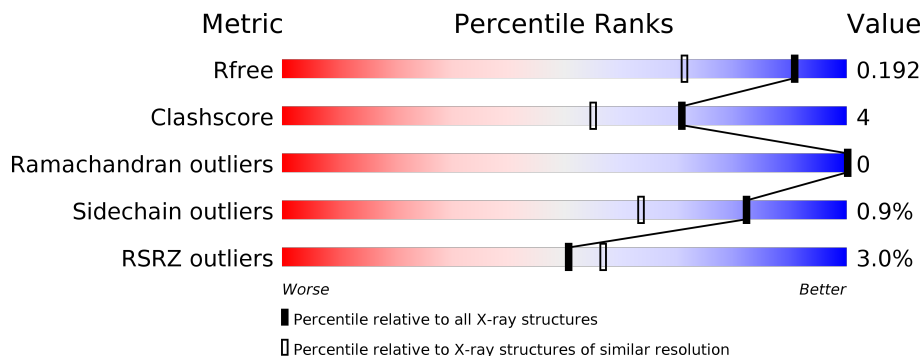
1 Overall quality at a glance

The following experimental techniques were used to determine the structure:

X-RAY DIFFRACTION

The reported resolution of this entry is 1.50 Å.

Percentile scores (ranging between 0-100) for global validation metrics of the entry are shown in the following graphic. The table shows the number of entries on which the scores are based.



Metric	Whole archive (#Entries)	Similar resolution (#Entries, resolution range(Å))
R_{free}	100719	2279 (1.50-1.50)
Clashscore	112137	2503 (1.50-1.50)
Ramachandran outliers	110173	2445 (1.50-1.50)
Sidechain outliers	110143	2443 (1.50-1.50)
RSRZ outliers	101464	2305 (1.50-1.50)

The table below summarises the geometric issues observed across the polymeric chains and their fit to the electron density. The red, orange, yellow and green segments on the lower bar indicate the fraction of residues that contain outliers for ≥ 3 , 2, 1 and 0 types of geometric quality criteria. A grey segment represents the fraction of residues that are not modelled. The numeric value for each fraction is indicated below the corresponding segment, with a dot representing fractions $\leq 5\%$. The upper red bar (where present) indicates the fraction of residues that have poor fit to the electron density. The numeric value is given above the bar.

Mol	Chain	Length	Quality of chain
1	A	246	<div> <div>3%</div> <div> <div></div> <div>90%</div> <div>7%</div> <div></div> </div> </div>
1	B	246	<div> <div>4%</div> <div> <div></div> <div>82%</div> <div>14%</div> <div></div> </div> </div>
1	C	246	<div> <div>2%</div> <div> <div></div> <div>85%</div> <div>11%</div> <div></div> </div> </div>
1	D	246	<div> <div>2%</div> <div> <div></div> <div>81%</div> <div>5%</div> <div>13%</div> </div> </div>

2 Entry composition

There are 3 unique types of molecules in this entry. The entry contains 7675 atoms, of which 0 are hydrogens and 0 are deuteriums.

In the tables below, the ZeroOcc column contains the number of atoms modelled with zero occupancy, the AltConf column contains the number of residues with at least one atom in alternate conformation and the Trace column contains the number of residues modelled with at most 2 atoms.

- Molecule 1 is a protein called OROTIDINE 5'-PHOSPHATE DECARBOXYLASE.

Mol	Chain	Residues	Atoms					ZeroOcc	AltConf	Trace
1	A	239	Total	C	N	O	S	0	3	0
			1831	1150	320	348	13			
1	B	211	Total	C	N	O	S	0	1	0
			1610	1014	282	304	10			
1	C	236	Total	C	N	O	S	0	2	0
			1806	1135	316	343	12			
1	D	214	Total	C	N	O	S	0	2	0
			1640	1032	286	309	13			

There are 84 discrepancies between the modelled and reference sequences:

Chain	Residue	Modelled	Actual	Comment	Reference
A	101	PRO	ARG	ENGINEERED	UNP O26232
A	227	ILE	ASN	CONFLICT	UNP O26232
A	229	GLU	-	CLONING ARTIFACT	UNP O26232
A	230	ASP	-	CLONING ARTIFACT	UNP O26232
A	231	PRO	-	CLONING ARTIFACT	UNP O26232
A	232	ALA	-	CLONING ARTIFACT	UNP O26232
A	233	ALA	-	CLONING ARTIFACT	UNP O26232
A	234	ASN	-	CLONING ARTIFACT	UNP O26232
A	235	LYS	-	CLONING ARTIFACT	UNP O26232
A	236	ALA	-	CLONING ARTIFACT	UNP O26232
A	237	ARG	-	CLONING ARTIFACT	UNP O26232
A	238	LYS	-	CLONING ARTIFACT	UNP O26232
A	239	GLU	-	CLONING ARTIFACT	UNP O26232
A	240	ALA	-	CLONING ARTIFACT	UNP O26232
A	241	GLU	-	CLONING ARTIFACT	UNP O26232
A	242	LEU	-	CLONING ARTIFACT	UNP O26232
A	243	ALA	-	CLONING ARTIFACT	UNP O26232
A	244	ALA	-	CLONING ARTIFACT	UNP O26232
A	245	ALA	-	CLONING ARTIFACT	UNP O26232
A	246	THR	-	CLONING ARTIFACT	UNP O26232
A	247	ALA	-	CLONING ARTIFACT	UNP O26232

Continued on next page...

Continued from previous page...

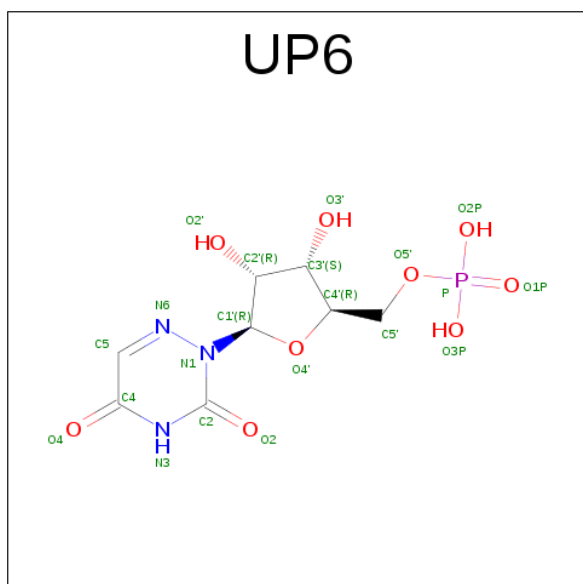
Chain	Residue	Modelled	Actual	Comment	Reference
B	101	PRO	ARG	ENGINEERED	UNP O26232
B	227	ILE	ASN	CONFLICT	UNP O26232
B	229	GLU	-	CLONING ARTIFACT	UNP O26232
B	230	ASP	-	CLONING ARTIFACT	UNP O26232
B	231	PRO	-	CLONING ARTIFACT	UNP O26232
B	232	ALA	-	CLONING ARTIFACT	UNP O26232
B	233	ALA	-	CLONING ARTIFACT	UNP O26232
B	234	ASN	-	CLONING ARTIFACT	UNP O26232
B	235	LYS	-	CLONING ARTIFACT	UNP O26232
B	236	ALA	-	CLONING ARTIFACT	UNP O26232
B	237	ARG	-	CLONING ARTIFACT	UNP O26232
B	238	LYS	-	CLONING ARTIFACT	UNP O26232
B	239	GLU	-	CLONING ARTIFACT	UNP O26232
B	240	ALA	-	CLONING ARTIFACT	UNP O26232
B	241	GLU	-	CLONING ARTIFACT	UNP O26232
B	242	LEU	-	CLONING ARTIFACT	UNP O26232
B	243	ALA	-	CLONING ARTIFACT	UNP O26232
B	244	ALA	-	CLONING ARTIFACT	UNP O26232
B	245	ALA	-	CLONING ARTIFACT	UNP O26232
B	246	THR	-	CLONING ARTIFACT	UNP O26232
B	247	ALA	-	CLONING ARTIFACT	UNP O26232
C	101	PRO	ARG	ENGINEERED	UNP O26232
C	227	ILE	ASN	CONFLICT	UNP O26232
C	229	GLU	-	CLONING ARTIFACT	UNP O26232
C	230	ASP	-	CLONING ARTIFACT	UNP O26232
C	231	PRO	-	CLONING ARTIFACT	UNP O26232
C	232	ALA	-	CLONING ARTIFACT	UNP O26232
C	233	ALA	-	CLONING ARTIFACT	UNP O26232
C	234	ASN	-	CLONING ARTIFACT	UNP O26232
C	235	LYS	-	CLONING ARTIFACT	UNP O26232
C	236	ALA	-	CLONING ARTIFACT	UNP O26232
C	237	ARG	-	CLONING ARTIFACT	UNP O26232
C	238	LYS	-	CLONING ARTIFACT	UNP O26232
C	239	GLU	-	CLONING ARTIFACT	UNP O26232
C	240	ALA	-	CLONING ARTIFACT	UNP O26232
C	241	GLU	-	CLONING ARTIFACT	UNP O26232
C	242	LEU	-	CLONING ARTIFACT	UNP O26232
C	243	ALA	-	CLONING ARTIFACT	UNP O26232
C	244	ALA	-	CLONING ARTIFACT	UNP O26232
C	245	ALA	-	CLONING ARTIFACT	UNP O26232
C	246	THR	-	CLONING ARTIFACT	UNP O26232
C	247	ALA	-	CLONING ARTIFACT	UNP O26232

Continued on next page...

Continued from previous page...

Chain	Residue	Modelled	Actual	Comment	Reference
D	101	PRO	ARG	ENGINEERED	UNP O26232
D	227	ILE	ASN	CONFLICT	UNP O26232
D	229	GLU	-	CLONING ARTIFACT	UNP O26232
D	230	ASP	-	CLONING ARTIFACT	UNP O26232
D	231	PRO	-	CLONING ARTIFACT	UNP O26232
D	232	ALA	-	CLONING ARTIFACT	UNP O26232
D	233	ALA	-	CLONING ARTIFACT	UNP O26232
D	234	ASN	-	CLONING ARTIFACT	UNP O26232
D	235	LYS	-	CLONING ARTIFACT	UNP O26232
D	236	ALA	-	CLONING ARTIFACT	UNP O26232
D	237	ARG	-	CLONING ARTIFACT	UNP O26232
D	238	LYS	-	CLONING ARTIFACT	UNP O26232
D	239	GLU	-	CLONING ARTIFACT	UNP O26232
D	240	ALA	-	CLONING ARTIFACT	UNP O26232
D	241	GLU	-	CLONING ARTIFACT	UNP O26232
D	242	LEU	-	CLONING ARTIFACT	UNP O26232
D	243	ALA	-	CLONING ARTIFACT	UNP O26232
D	244	ALA	-	CLONING ARTIFACT	UNP O26232
D	245	ALA	-	CLONING ARTIFACT	UNP O26232
D	246	THR	-	CLONING ARTIFACT	UNP O26232
D	247	ALA	-	CLONING ARTIFACT	UNP O26232

- Molecule 2 is 6-AZA URIDINE 5'-MONOPHOSPHATE (three-letter code: UP6) (formula: $C_8H_{12}N_3O_9P$).



Mol	Chain	Residues	Atoms					ZeroOcc	AltConf
2	A	1	Total	C	N	O	P	0	0
			21	8	3	9	1		
2	B	1	Total	C	N	O	P	0	0
			21	8	3	9	1		
2	C	1	Total	C	N	O	P	0	0
			21	8	3	9	1		
2	D	1	Total	C	N	O	P	0	0
			21	8	3	9	1		

- Molecule 3 is water.

Mol	Chain	Residues	Atoms		ZeroOcc	AltConf
3	A	217	Total	O	0	1
			218	218		
3	B	139	Total	O	0	0
			139	139		
3	C	174	Total	O	0	1
			175	175		
3	D	172	Total	O	0	0
			172	172		

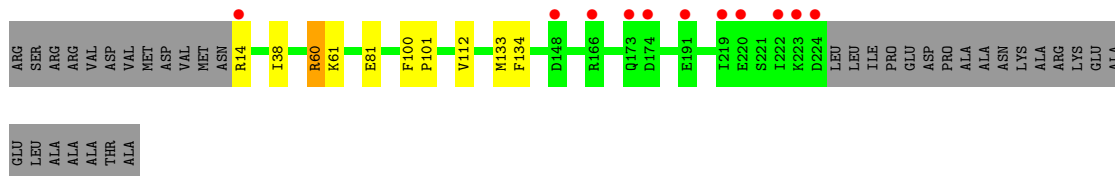
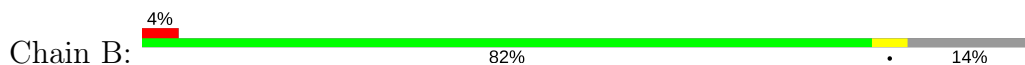
3 Residue-property plots [i](#)

These plots are drawn for all protein, RNA and DNA chains in the entry. The first graphic for a chain summarises the proportions of the various outlier classes displayed in the second graphic. The second graphic shows the sequence view annotated by issues in geometry and electron density. Residues are color-coded according to the number of geometric quality criteria for which they contain at least one outlier: green = 0, yellow = 1, orange = 2 and red = 3 or more. A red dot above a residue indicates a poor fit to the electron density ($RSRZ > 2$). Stretches of 2 or more consecutive residues without any outlier are shown as a green connector. Residues present in the sample, but not in the model, are shown in grey.

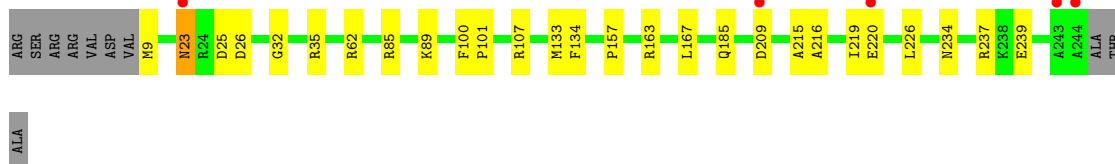
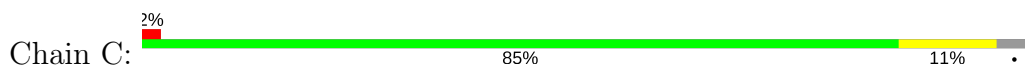
• Molecule 1: OROTIDINE 5'-PHOSPHATE DECARBOXYLASE



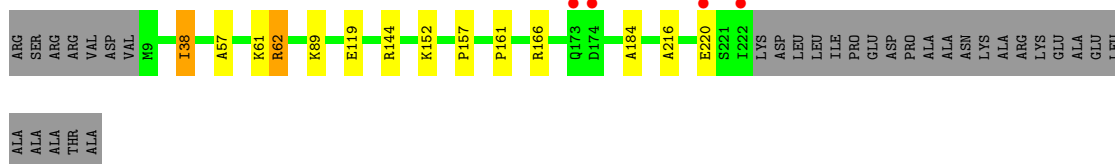
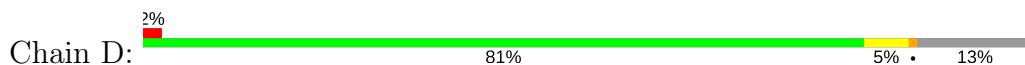
• Molecule 1: OROTIDINE 5'-PHOSPHATE DECARBOXYLASE



• Molecule 1: OROTIDINE 5'-PHOSPHATE DECARBOXYLASE



• Molecule 1: OROTIDINE 5'-PHOSPHATE DECARBOXYLASE



4 Data and refinement statistics

Property	Value	Source
Space group	P 1 21 1	Depositor
Cell constants a, b, c, α , β , γ	72.95Å 98.62Å 73.25Å 90.00° 104.03° 90.00°	Depositor
Resolution (Å)	30.00 – 1.50 24.13 – 1.50	Depositor EDS
% Data completeness (in resolution range)	95.6 (30.00-1.50) 95.8 (24.13-1.50)	Depositor EDS
R_{merge}	0.06	Depositor
R_{sym}	(Not available)	Depositor
$\langle I/\sigma(I) \rangle$ ¹	4.52 (at 1.50Å)	Xtriage
Refinement program	CNS 0.5	Depositor
R, R_{free}	0.174 , 0.188 0.177 , 0.192	Depositor DCC
R_{free} test set	7760 reflections (5.05%)	DCC
Wilson B-factor (Å ²)	18.1	Xtriage
Anisotropy	0.016	Xtriage
Bulk solvent k_{sol} (e/Å ³), B_{sol} (Å ²)	0.41 , 45.3	EDS
L-test for twinning ²	$\langle L \rangle = 0.50$, $\langle L^2 \rangle = 0.33$	Xtriage
Estimated twinning fraction	0.000 for l,-k,h	Xtriage
F_o, F_c correlation	0.97	EDS
Total number of atoms	7675	wwPDB-VP
Average B, all atoms (Å ²)	21.0	wwPDB-VP

Xtriage's analysis on translational NCS is as follows: *The analyses of the Patterson function reveals a significant off-origin peak that is 58.06 % of the origin peak, indicating pseudo translational symmetry. The chance of finding a peak of this or larger height randomly in a structure without pseudo translational symmetry is equal to 2.1616e-05. The detected translational NCS is most likely also responsible for the elevated intensity ratio.*

¹Intensities estimated from amplitudes.

²Theoretical values of $\langle |L| \rangle$, $\langle L^2 \rangle$ for acentric reflections are 0.5, 0.333 respectively for untwinned datasets, and 0.375, 0.2 for perfectly twinned datasets.

5 Model quality [i](#)

5.1 Standard geometry [i](#)

Bond lengths and bond angles in the following residue types are not validated in this section: UP6

The Z score for a bond length (or angle) is the number of standard deviations the observed value is removed from the expected value. A bond length (or angle) with $|Z| > 5$ is considered an outlier worth inspection. RMSZ is the root-mean-square of all Z scores of the bond lengths (or angles).

Mol	Chain	Bond lengths		Bond angles	
		RMSZ	$\# Z > 5$	RMSZ	$\# Z > 5$
1	A	0.66	0/1857	0.81	0/2507
1	B	0.64	0/1634	0.82	2/2205 (0.1%)
1	C	0.66	1/1832 (0.1%)	0.80	1/2473 (0.0%)
1	D	0.66	0/1664	0.81	1/2245 (0.0%)
All	All	0.65	1/6987 (0.0%)	0.81	4/9430 (0.0%)

All (1) bond length outliers are listed below:

Mol	Chain	Res	Type	Atoms	Z	Observed(Å)	Ideal(Å)
1	C	239	GLU	CD-OE2	6.34	1.32	1.25

All (4) bond angle outliers are listed below:

Mol	Chain	Res	Type	Atoms	Z	Observed(°)	Ideal(°)
1	B	60	ARG	NE-CZ-NH1	6.76	123.68	120.30
1	B	60	ARG	NE-CZ-NH2	-6.06	117.27	120.30
1	C	163	ARG	NE-CZ-NH1	5.62	123.11	120.30
1	D	157	PRO	N-CA-C	5.05	125.22	112.10

There are no chirality outliers.

There are no planarity outliers.

5.2 Too-close contacts [i](#)

In the following table, the Non-H and H(model) columns list the number of non-hydrogen atoms and hydrogen atoms in the chain respectively. The H(added) column lists the number of hydrogen atoms added and optimized by MolProbity. The Clashes column lists the number of clashes within the asymmetric unit, whereas Symm-Clashes lists symmetry related clashes.

Mol	Chain	Non-H	H(model)	H(added)	Clashes	Symm-Clashes
1	A	1831	0	1845	15	0
1	B	1610	0	1621	9	0
1	C	1806	0	1820	19	0
1	D	1640	0	1649	14	0
2	A	21	0	10	0	0
2	B	21	0	10	0	0
2	C	21	0	10	0	0
2	D	21	0	10	0	0
3	A	218	0	0	4	0
3	B	139	0	0	5	0
3	C	175	0	0	7	0
3	D	172	0	0	5	0
All	All	7675	0	6975	57	0

The all-atom clashscore is defined as the number of clashes found per 1000 atoms (including hydrogen atoms). The all-atom clashscore for this structure is 4.

The worst 5 of 57 close contacts within the same asymmetric unit are listed below, sorted by their clash magnitude.

Atom-1	Atom-2	Interatomic distance (Å)	Clash overlap (Å)
1:B:60:ARG:NH1	3:B:4736:HOH:O	1.92	0.98
1:D:57:ALA:O	1:D:61:LYS:HD3	1.65	0.95
1:C:185[B]:GLN:OE1	3:C:4003[B]:HOH:O	1.94	0.85
1:D:216:ALA:O	1:D:220:GLU:HG3	1.81	0.80
1:A:148:ASP:HB3	3:A:4696:HOH:O	1.81	0.79

There are no symmetry-related clashes.

5.3 Torsion angles [i](#)

5.3.1 Protein backbone [i](#)

In the following table, the Percentiles column shows the percent Ramachandran outliers of the chain as a percentile score with respect to all X-ray entries followed by that with respect to entries of similar resolution.

The Analysed column shows the number of residues for which the backbone conformation was analysed, and the total number of residues.

Mol	Chain	Analysed	Favoured	Allowed	Outliers	Percentiles
1	A	240/246 (98%)	236 (98%)	4 (2%)	0	100 100

Continued on next page...

Continued from previous page...

Mol	Chain	Analysed	Favoured	Allowed	Outliers	Percentiles	
1	B	210/246 (85%)	206 (98%)	4 (2%)	0	100	100
1	C	236/246 (96%)	232 (98%)	4 (2%)	0	100	100
1	D	214/246 (87%)	209 (98%)	5 (2%)	0	100	100
All	All	900/984 (92%)	883 (98%)	17 (2%)	0	100	100

There are no Ramachandran outliers to report.

5.3.2 Protein sidechains ⓘ

In the following table, the Percentiles column shows the percent sidechain outliers of the chain as a percentile score with respect to all X-ray entries followed by that with respect to entries of similar resolution.

The Analysed column shows the number of residues for which the sidechain conformation was analysed, and the total number of residues.

Mol	Chain	Analysed	Rotameric	Outliers	Percentiles	
1	A	188/192 (98%)	187 (100%)	1 (0%)	91	80
1	B	166/192 (86%)	166 (100%)	0	100	100
1	C	186/192 (97%)	183 (98%)	3 (2%)	68	39
1	D	170/192 (88%)	168 (99%)	2 (1%)	75	52
All	All	710/768 (92%)	704 (99%)	6 (1%)	82	68

5 of 6 residues with a non-rotameric sidechain are listed below:

Mol	Chain	Res	Type
1	C	157	PRO
1	D	62	ARG
1	C	209	ASP
1	C	23	ASN
1	D	38	ILE

Some sidechains can be flipped to improve hydrogen bonding and reduce clashes. All (2) such sidechains are listed below:

Mol	Chain	Res	Type
1	A	234	ASN
1	C	234	ASN

5.3.3 RNA ⓘ

There are no RNA molecules in this entry.

5.4 Non-standard residues in protein, DNA, RNA chains ⓘ

There are no non-standard protein/DNA/RNA residues in this entry.

5.5 Carbohydrates ⓘ

There are no carbohydrates in this entry.

5.6 Ligand geometry ⓘ

4 ligands are modelled in this entry.

In the following table, the Counts columns list the number of bonds (or angles) for which Mogul statistics could be retrieved, the number of bonds (or angles) that are observed in the model and the number of bonds (or angles) that are defined in the chemical component dictionary. The Link column lists molecule types, if any, to which the group is linked. The Z score for a bond length (or angle) is the number of standard deviations the observed value is removed from the expected value. A bond length (or angle) with $|Z| > 2$ is considered an outlier worth inspection. RMSZ is the root-mean-square of all Z scores of the bond lengths (or angles).

Mol	Type	Chain	Res	Link	Bond lengths			Bond angles		
					Counts	RMSZ	# $ Z > 2$	Counts	RMSZ	# $ Z > 2$
2	UP6	A	5001	-	21,22,22	2.29	2 (9%)	31,33,33	2.76	4 (12%)
2	UP6	B	5002	-	21,22,22	2.92	5 (23%)	31,33,33	2.92	4 (12%)
2	UP6	C	5003	-	21,22,22	2.82	3 (14%)	31,33,33	2.82	4 (12%)
2	UP6	D	5004	-	21,22,22	2.36	3 (14%)	31,33,33	3.11	6 (19%)

In the following table, the Chirals column lists the number of chiral outliers, the number of chiral centers analysed, the number of these observed in the model and the number defined in the chemical component dictionary. Similar counts are reported in the Torsion and Rings columns. '-' means no outliers of that kind were identified.

Mol	Type	Chain	Res	Link	Chirals	Torsions	Rings
2	UP6	A	5001	-	-	0/10/26/26	0/1/2/2
2	UP6	B	5002	-	-	0/10/26/26	0/1/2/2
2	UP6	C	5003	-	-	0/10/26/26	0/1/2/2
2	UP6	D	5004	-	-	0/10/26/26	0/1/2/2

The worst 5 of 13 bond length outliers are listed below:

Mol	Chain	Res	Type	Atoms	Z	Observed(Å)	Ideal(Å)
2	C	5003	UP6	C5-C4	-11.72	1.41	1.50
2	B	5002	UP6	C5-C4	-10.94	1.42	1.50
2	A	5001	UP6	C5-C4	-9.65	1.43	1.50
2	D	5004	UP6	C5-C4	-9.37	1.43	1.50
2	C	5003	UP6	N6-N1	-3.10	1.38	1.42

The worst 5 of 18 bond angle outliers are listed below:

Mol	Chain	Res	Type	Atoms	Z	Observed(°)	Ideal(°)
2	D	5004	UP6	O2-C2-N1	-2.78	119.69	122.72
2	D	5004	UP6	N3-C2-N1	2.20	116.13	114.12
2	A	5001	UP6	C2'-C1'-N1	3.77	119.24	113.46
2	D	5004	UP6	C2'-C1'-N1	4.03	119.64	113.46
2	C	5003	UP6	C2'-C1'-N1	4.33	120.10	113.46

There are no chirality outliers.

There are no torsion outliers.

There are no ring outliers.

No monomer is involved in short contacts.

5.7 Other polymers [i](#)

There are no such residues in this entry.

5.8 Polymer linkage issues [i](#)

There are no chain breaks in this entry.

6 Fit of model and data [i](#)

6.1 Protein, DNA and RNA chains [i](#)

In the following table, the column labelled ‘#RSRZ> 2’ contains the number (and percentage) of RSRZ outliers, followed by percent RSRZ outliers for the chain as percentile scores relative to all X-ray entries and entries of similar resolution. The OWAB column contains the minimum, median, 95th percentile and maximum values of the occupancy-weighted average B-factor per residue. The column labelled ‘Q< 0.9’ lists the number of (and percentage) of residues with an average occupancy less than 0.9.

Mol	Chain	Analysed	<RSRZ>	#RSRZ>2	OWAB(Å ²)	Q<0.9
1	A	239/246 (97%)	0.04	7 (2%) 52 58	12, 18, 29, 45	0
1	B	211/246 (85%)	0.25	11 (5%) 28 32	12, 20, 36, 52	0
1	C	236/246 (95%)	0.05	5 (2%) 64 69	12, 19, 32, 43	0
1	D	214/246 (86%)	0.01	4 (1%) 67 72	12, 18, 29, 44	0
All	All	900/984 (91%)	0.08	27 (3%) 51 57	12, 19, 32, 52	0

The worst 5 of 27 RSRZ outliers are listed below:

Mol	Chain	Res	Type	RSRZ
1	A	247	ALA	9.6
1	B	224	ASP	7.1
1	B	222	ILE	5.7
1	A	246	THR	5.3
1	B	223	LYS	4.6

6.2 Non-standard residues in protein, DNA, RNA chains [i](#)

There are no non-standard protein/DNA/RNA residues in this entry.

6.3 Carbohydrates [i](#)

There are no carbohydrates in this entry.

6.4 Ligands [i](#)

In the following table, the Atoms column lists the number of modelled atoms in the group and the number defined in the chemical component dictionary. LLDF column lists the quality of electron density of the group with respect to its neighbouring residues in protein, DNA or RNA chains. The B-factors column lists the minimum, median, 95th percentile and maximum values of B factors

of atoms in the group. The column labelled 'Q < 0.9' lists the number of atoms with occupancy less than 0.9.

Mol	Type	Chain	Res	Atoms	RSCC	RSR	LLDF	B-factors(\AA^2)	Q<0.9
2	UP6	C	5003	21/21	0.97	0.07	-0.89	13,14,16,18	0
2	UP6	B	5002	21/21	0.98	0.06	-0.96	13,14,17,18	0
2	UP6	D	5004	21/21	0.98	0.07	-1.05	12,14,15,15	0
2	UP6	A	5001	21/21	0.98	0.06	-1.14	11,13,15,17	0

6.5 Other polymers [i](#)

There are no such residues in this entry.