



Full wwPDB X-ray Structure Validation Report ⓘ

Oct 17, 2017 – 04:54 AM EDT

PDB ID : 3DV1
Title : Crystal structure of human beta-secretase in complex with NVP-ARV999
Authors : Rondeau, J.-M.
Deposited on : unknown
Resolution : 2.10 Å(reported)

This is a Full wwPDB X-ray Structure Validation Report for a publicly released PDB entry.

We welcome your comments at validation@mail.wwpdb.org

A user guide is available at

<http://wwpdb.org/validation/2016/XrayValidationReportHelp>

with specific help available everywhere you see the ⓘ symbol.

The following versions of software and data (see [references ⓘ](#)) were used in the production of this report:

MolProbity : 4.02b-467
Mogul : 1.7.2 (RC1), CSD as538be (2017)
Xtriage (Phenix) : 1.9-1692
EDS : rb-20030345
Percentile statistics : 20161228.v01 (using entries in the PDB archive December 28th 2016)
Refmac : 5.8.0135
CCP4 : 6.5.0
Ideal geometry (proteins) : Engh & Huber (2001)
Ideal geometry (DNA, RNA) : Parkinson et al. (1996)
Validation Pipeline (wwPDB-VP) : rb-20030345

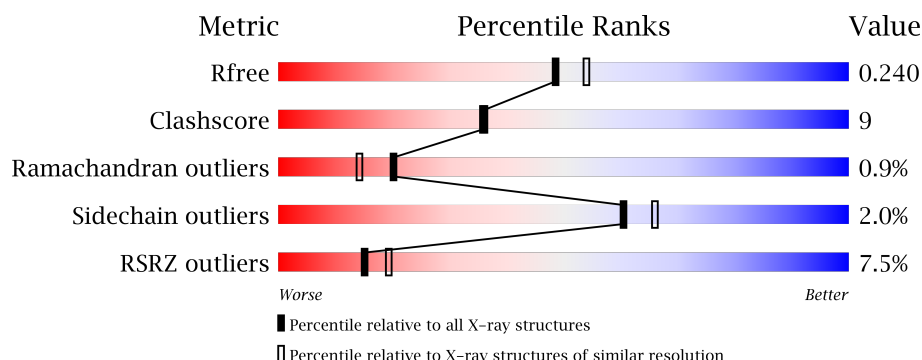
1 Overall quality at a glance

The following experimental techniques were used to determine the structure:

X-RAY DIFFRACTION

The reported resolution of this entry is 2.10 Å.

Percentile scores (ranging between 0-100) for global validation metrics of the entry are shown in the following graphic. The table shows the number of entries on which the scores are based.



Metric	Whole archive (#Entries)	Similar resolution (#Entries, resolution range(Å))
R_{free}	100719	4243 (2.10-2.10)
Clashscore	112137	4788 (2.10-2.10)
Ramachandran outliers	110173	4740 (2.10-2.10)
Sidechain outliers	110143	4741 (2.10-2.10)
RSRZ outliers	101464	4275 (2.10-2.10)

The table below summarises the geometric issues observed across the polymeric chains and their fit to the electron density. The red, orange, yellow and green segments on the lower bar indicate the fraction of residues that contain outliers for ≥ 3 , 2, 1 and 0 types of geometric quality criteria. A grey segment represents the fraction of residues that are not modelled. The numeric value for each fraction is indicated below the corresponding segment, with a dot representing fractions $\leq 5\%$. The upper red bar (where present) indicates the fraction of residues that have poor fit to the electron density. The numeric value is given above the bar.

Mol	Chain	Length	Quality of chain
1	A	402	
1	B	402	
1	C	402	

2 Entry composition

There are 3 unique types of molecules in this entry. The entry contains 9552 atoms, of which 0 are hydrogens and 0 are deuteriums.

In the tables below, the ZeroOcc column contains the number of atoms modelled with zero occupancy, the AltConf column contains the number of residues with at least one atom in alternate conformation and the Trace column contains the number of residues modelled with at most 2 atoms.

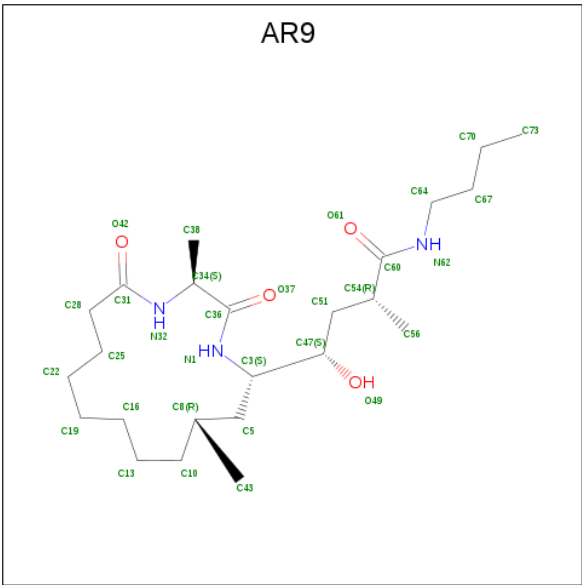
- Molecule 1 is a protein called Beta-secretase 1.

Mol	Chain	Residues	Atoms					ZeroOcc	AltConf	Trace
1	A	377	Total	C	N	O	S	0	0	0
			2966	1898	493	561	14			
1	B	378	Total	C	N	O	S	0	0	0
			2975	1904	494	563	14			
1	C	381	Total	C	N	O	S	0	0	0
			2993	1917	497	565	14			

There are 6 discrepancies between the modelled and reference sequences:

Chain	Residue	Modelled	Actual	Comment	Reference
A	33P	GLY	-	EXPRESSION TAG	UNP P56817
A	34P	PRO	-	EXPRESSION TAG	UNP P56817
B	33P	GLY	-	EXPRESSION TAG	UNP P56817
B	34P	PRO	-	EXPRESSION TAG	UNP P56817
C	33P	GLY	-	EXPRESSION TAG	UNP P56817
C	34P	PRO	-	EXPRESSION TAG	UNP P56817

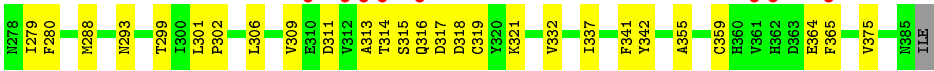
- Molecule 2 is (2R,4S)-N-butyl-4-[(2S,5S,7R)-2,7-dimethyl-3,15-dioxo-1,4-diazacyclopentadecan-5-yl]-4-hydroxy-2-methylbutanamide (three-letter code: AR9) (formula: C₂₄H₄₅N₃O₄).



Mol	Chain	Residues	Atoms				ZeroOcc	AltConf
2	A	1	Total	C	N	O	0	0
			31	24	3	4		
2	B	1	Total	C	N	O	0	0
			31	24	3	4		
2	C	1	Total	C	N	O	0	0
			31	24	3	4		

- Molecule 3 is water.

Mol	Chain	Residues	Atoms		ZeroOcc	AltConf
3	A	170	Total	O	0	0
			170	170		
3	B	164	Total	O	0	0
			164	164		
3	C	191	Total	O	0	0
			191	191		



4 Data and refinement statistics

Property	Value	Source
Space group	P 1 21 1	Depositor
Cell constants a, b, c, α , β , γ	82.03Å 102.94Å 99.92Å 90.00° 103.66° 90.00°	Depositor
Resolution (Å)	55.52 – 2.10 55.51 – 2.10	Depositor EDS
% Data completeness (in resolution range)	99.4 (55.52-2.10) 99.5 (55.51-2.10)	Depositor EDS
R_{merge}	0.06	Depositor
R_{sym}	(Not available)	Depositor
$\langle I/\sigma(I) \rangle$ ¹	3.16 (at 2.10Å)	Xtriage
Refinement program	CNS, CNX	Depositor
R, R_{free}	0.207 , 0.241 0.207 , 0.240	Depositor DCC
R_{free} test set	9307 reflections (9.99%)	DCC
Wilson B-factor (Å ²)	40.6	Xtriage
Anisotropy	0.204	Xtriage
Bulk solvent k_{sol} (e/Å ³), B_{sol} (Å ²)	0.33 , 46.8	EDS
L-test for twinning ²	$\langle L \rangle = 0.50$, $\langle L^2 \rangle = 0.33$	Xtriage
Estimated twinning fraction	No twinning to report.	Xtriage
F_o, F_c correlation	0.95	EDS
Total number of atoms	9552	wwPDB-VP
Average B, all atoms (Å ²)	46.0	wwPDB-VP

Xtriage's analysis on translational NCS is as follows: *The largest off-origin peak in the Patterson function is 3.39% of the height of the origin peak. No significant pseudotranslation is detected.*

¹Intensities estimated from amplitudes.

²Theoretical values of $\langle |L| \rangle$, $\langle L^2 \rangle$ for acentric reflections are 0.5, 0.333 respectively for untwinned datasets, and 0.375, 0.2 for perfectly twinned datasets.

5 Model quality [i](#)

5.1 Standard geometry [i](#)

Bond lengths and bond angles in the following residue types are not validated in this section: AR9

The Z score for a bond length (or angle) is the number of standard deviations the observed value is removed from the expected value. A bond length (or angle) with $|Z| > 5$ is considered an outlier worth inspection. RMSZ is the root-mean-square of all Z scores of the bond lengths (or angles).

Mol	Chain	Bond lengths		Bond angles	
		RMSZ	$\# Z > 5$	RMSZ	$\# Z > 5$
1	A	0.28	0/3041	0.62	1/4133 (0.0%)
1	B	0.28	0/3050	0.62	2/4144 (0.0%)
1	C	0.29	0/3070	0.63	2/4173 (0.0%)
All	All	0.28	0/9161	0.62	5/12450 (0.0%)

There are no bond length outliers.

All (5) bond angle outliers are listed below:

Mol	Chain	Res	Type	Atoms	Z	Observed(°)	Ideal(°)
1	A	234	LEU	N-CA-C	-5.73	95.54	111.00
1	C	234	LEU	N-CA-C	-5.42	96.36	111.00
1	B	234	LEU	N-CA-C	-5.28	96.75	111.00
1	B	198	TYR	N-CA-C	-5.16	97.06	111.00
1	C	198	TYR	N-CA-C	-5.05	97.37	111.00

There are no chirality outliers.

There are no planarity outliers.

5.2 Too-close contacts [i](#)

In the following table, the Non-H and H(model) columns list the number of non-hydrogen atoms and hydrogen atoms in the chain respectively. The H(added) column lists the number of hydrogen atoms added and optimized by MolProbity. The Clashes column lists the number of clashes within the asymmetric unit, whereas Symm-Clashes lists symmetry related clashes.

Mol	Chain	Non-H	H(model)	H(added)	Clashes	Symm-Clashes
1	A	2966	0	2875	58	0
1	B	2975	0	2886	53	0
1	C	2993	0	2899	53	0

Continued on next page...

Continued from previous page...

Mol	Chain	Non-H	H(model)	H(added)	Clashes	Symm-Clashes
2	A	31	0	45	3	0
2	B	31	0	45	1	0
2	C	31	0	45	1	0
3	A	170	0	0	1	0
3	B	164	0	0	1	0
3	C	191	0	0	3	0
All	All	9552	0	8795	162	0

The all-atom clashscore is defined as the number of clashes found per 1000 atoms (including hydrogen atoms). The all-atom clashscore for this structure is 9.

All (162) close contacts within the same asymmetric unit are listed below, sorted by their clash magnitude.

Atom-1	Atom-2	Interatomic distance (Å)	Clash overlap (Å)
1:A:55:GLN:NE2	1:A:55:GLN:H	1.65	0.95
1:A:104:GLU:HB3	1:B:48(P):VAL:HG21	1.54	0.90
1:B:301:LEU:H	1:B:304:GLN:NE2	1.77	0.82
1:A:55:GLN:HE21	1:A:55:GLN:H	1.26	0.81
1:B:258:PRO:HG3	1:B:266:GLN:NE2	1.96	0.81
1:B:208:ILE:HG12	1:B:213:LEU:HD11	1.66	0.78
1:C:267:LEU:H	1:C:267:LEU:HD23	1.48	0.77
1:B:267:LEU:HD23	1:B:267:LEU:H	1.50	0.76
1:C:55:GLN:NE2	1:C:55:GLN:H	1.83	0.76
1:B:301:LEU:H	1:B:304:GLN:HE21	1.35	0.73
1:B:309:VAL:HG21	1:B:321:LYS:HG3	1.68	0.73
1:A:104:GLU:HB3	1:B:48(P):VAL:CG2	2.20	0.71
1:A:303:GLN:NE2	1:A:363:ASP:HB3	2.08	0.69
1:A:104:GLU:OE1	1:B:46(P):SER:HA	1.94	0.67
1:A:267:LEU:HD13	1:A:319:CYS:HB3	1.75	0.67
1:B:272:ALA:HA	1:B:318:ASP:OD1	1.94	0.67
1:C:267:LEU:HD12	1:C:319:CYS:HB3	1.77	0.66
1:B:267:LEU:HB3	1:B:321:LYS:HG2	1.77	0.66
1:A:303:GLN:HE22	1:A:363:ASP:HB3	1.61	0.64
1:C:194:ARG:HD2	1:C:202:ILE:HD11	1.80	0.64
1:B:125:GLU:OE2	1:B:195:ARG:NH1	2.33	0.62
1:B:301:LEU:HB3	1:B:302:PRO:HD2	1.81	0.62
1:A:65:LYS:NZ	1:A:65:LYS:HB2	2.15	0.62
1:B:241:PHE:O	1:B:245:VAL:HG23	2.00	0.61
1:C:272:ALA:HA	1:C:318:ASP:OD2	2.01	0.61
1:B:222:TYR:O	1:B:223:ASP:CB	2.49	0.61
1:B:256:LYS:HD2	1:B:256:LYS:N	2.16	0.61

Continued on next page...

Continued from previous page...

Atom-1	Atom-2	Interatomic distance (Å)	Clash overlap (Å)
1:C:267:LEU:HD13	1:C:309:VAL:HG21	1.81	0.61
1:A:276:PRO:O	1:A:279:ILE:HG12	2.00	0.61
1:B:149:LEU:HD12	1:B:149:LEU:C	2.21	0.61
1:C:272:ALA:HB2	1:C:316:GLN:O	2.00	0.61
1:A:261:PHE:CD1	1:A:268:VAL:HG23	2.36	0.60
1:B:276:PRO:O	1:B:279:ILE:HG12	2.03	0.59
1:A:366:ARG:HA	1:C:211:GLN:HE22	1.67	0.59
1:B:219:GLU:OE1	1:B:239:LYS:HD2	2.02	0.58
1:C:321:LYS:HB2	1:C:321:LYS:NZ	2.18	0.58
1:A:32:ASP:OD1	1:A:230:GLY:HA3	2.03	0.58
1:B:2:MET:HG2	1:B:90:GLY:HA2	1.85	0.58
1:C:211:GLN:HB2	3:C:648:HOH:O	2.03	0.57
1:B:257:PHE:HD2	1:B:268:VAL:HG11	1.69	0.57
1:A:55:GLN:HE21	1:A:55:GLN:N	2.01	0.57
1:A:222:TYR:O	1:A:223:ASP:CB	2.53	0.56
1:B:258:PRO:HG3	1:B:266:GLN:HE22	1.71	0.56
1:A:208:ILE:HG13	1:A:213:LEU:HD11	1.88	0.56
1:A:68:TYR:OH	1:A:70:PRO:HB3	2.06	0.55
1:C:2:MET:HG2	1:C:90:GLY:HA2	1.89	0.55
1:C:32:ASP:OD1	1:C:230:GLY:HA3	2.06	0.55
1:C:238:LYS:O	1:C:242:GLU:HG3	2.06	0.55
1:B:9:LYS:HZ3	1:B:169:SER:N	2.06	0.54
1:C:261:PHE:HA	1:C:266:GLN:O	2.06	0.54
1:B:249:LYS:HD3	1:B:262:TRP:NE1	2.22	0.54
1:B:301:LEU:HD11	1:B:367:THR:HA	1.90	0.54
1:A:93:VAL:HG21	1:A:144:THR:CG2	2.38	0.53
1:A:8:GLY:C	1:A:170:VAL:HG22	2.28	0.53
1:A:2:MET:HG2	1:A:90:GLY:HA2	1.91	0.53
1:B:142:LYS:NZ	1:B:142:LYS:HB2	2.24	0.52
1:A:222:TYR:O	1:A:223:ASP:HB3	2.08	0.52
1:B:32:ASP:OD1	1:B:230:GLY:HA3	2.10	0.52
1:A:238:LYS:O	1:A:242:GLU:HG3	2.10	0.52
1:B:93:VAL:HG21	1:B:144:THR:CG2	2.40	0.52
1:A:63:LEU:HG	1:A:81:GLY:HA2	1.90	0.52
1:C:293:ASN:HA	1:C:375:VAL:HA	1.92	0.51
1:C:63:LEU:HG	1:C:81:GLY:HA2	1.94	0.50
1:B:13:GLY:HA3	1:B:30:LEU:HD11	1.93	0.50
1:B:14:TYR:CE2	1:B:170:VAL:HG13	2.46	0.50
1:C:267:LEU:N	1:C:267:LEU:HD23	2.23	0.50
1:B:179:ILE:HG23	1:B:342:TYR:HE2	1.77	0.49
1:C:1:GLU:HG2	3:C:665:HOH:O	2.13	0.49

Continued on next page...

Continued from previous page...

Atom-1	Atom-2	Interatomic distance (Å)	Clash overlap (Å)
1:A:198:TYR:CE2	1:A:224:LYS:HE3	2.48	0.49
1:C:222:TYR:O	1:C:223:ASP:CB	2.60	0.49
1:C:269:CYS:HA	1:C:318:ASP:O	2.13	0.48
1:C:268:VAL:O	1:C:319:CYS:HA	2.13	0.48
1:B:301:LEU:N	1:B:304:GLN:HE21	2.08	0.48
1:C:276:PRO:O	1:C:279:ILE:HG12	2.13	0.48
1:A:255:GLU:HG3	1:A:279:ILE:CD1	2.44	0.48
1:A:257:PHE:HD2	1:A:268:VAL:HG21	1.78	0.48
1:A:267:LEU:HD12	1:A:267:LEU:O	2.13	0.47
1:C:9:LYS:HZ3	1:C:168:ALA:N	2.13	0.47
1:C:8:GLY:O	1:C:170:VAL:HG22	2.14	0.47
1:A:253:SER:C	1:A:255:GLU:H	2.17	0.47
1:B:205:ARG:HB3	1:B:286:TYR:HB2	1.96	0.47
1:B:378:ASP:HB3	1:B:381:ASP:OD2	2.14	0.47
1:B:155:CYS:O	1:B:170:VAL:HG22	2.14	0.47
1:B:272:ALA:O	1:B:274:THR:HG23	2.15	0.47
1:B:154:LEU:O	1:B:339:GLU:HA	2.15	0.47
1:B:307:ARG:HA	1:B:308:PRO:HD3	1.78	0.46
1:B:241:PHE:CD2	1:B:326:GLN:HB3	2.50	0.46
1:B:385:ASN:O	1:B:386:ILE:C	2.53	0.46
1:C:337:ILE:O	1:C:341:PHE:HD1	1.98	0.46
1:C:212:ASP:O	1:C:214:LYS:HG3	2.15	0.46
1:A:378:ASP:HB3	1:A:381:ASP:OD2	2.15	0.45
1:A:93:VAL:HG22	1:A:94:THR:N	2.31	0.45
1:C:188:LEU:HD23	1:C:355:ALA:HB2	1.99	0.45
1:A:188:LEU:HD23	1:A:355:ALA:HB2	1.98	0.45
1:A:30:LEU:HD13	2:A:501:AR9:H13	1.99	0.45
2:A:501:AR9:H25	2:A:501:AR9:H16	1.71	0.45
1:B:63:LEU:HG	1:B:81:GLY:HA2	1.99	0.45
1:A:110:ILE:HB	1:A:113:SER:HB3	1.99	0.44
1:A:311:ASP:OD1	1:A:313:ALA:HB3	2.17	0.44
2:B:501:AR9:H25	2:B:501:AR9:H16	1.72	0.44
1:A:8:GLY:O	1:A:170:VAL:HG22	2.17	0.44
1:A:134:GLU:HA	1:A:135:PRO:HD3	1.86	0.44
1:C:235:ARG:HB2	1:C:332:VAL:HB	1.98	0.44
1:B:79:GLU:HG3	3:B:777:HOH:O	2.16	0.44
1:A:65:LYS:HZ2	1:A:65:LYS:HB2	1.83	0.44
1:C:364:GLU:HG3	1:C:365:PHE:CD1	2.53	0.44
1:A:232:THR:O	1:A:336:VAL:HG23	2.18	0.44
1:B:267:LEU:HD23	1:B:267:LEU:N	2.25	0.44
1:C:267:LEU:HD13	1:C:309:VAL:CG2	2.46	0.44

Continued on next page...

Continued from previous page...

Atom-1	Atom-2	Interatomic distance (Å)	Clash overlap (Å)
1:C:321:LYS:HB2	1:C:321:LYS:HZ3	1.82	0.44
1:A:41:GLY:O	1:A:51:TYR:HB2	2.18	0.43
1:C:192:PRO:CG	1:C:288:MET:HE2	2.48	0.43
1:C:301:LEU:HB3	1:C:302:PRO:HD2	1.99	0.43
1:B:309:VAL:CG2	1:B:321:LYS:HG3	2.45	0.43
1:C:364:GLU:HG3	1:C:365:PHE:CE1	2.53	0.43
1:C:55:GLN:CD	1:C:55:GLN:H	2.20	0.43
1:B:261:PHE:HA	1:B:266:GLN:O	2.19	0.43
1:A:31:VAL:HG23	1:A:31:VAL:O	2.17	0.43
1:C:208:ILE:HG13	1:C:213:LEU:HD21	2.01	0.43
1:A:197:TRP:CG	1:A:198:TYR:N	2.87	0.43
1:A:270:TRP:O	1:A:317:ASP:HB3	2.19	0.43
1:C:299:THR:HG21	3:C:649:HOH:O	2.18	0.43
1:B:257:PHE:CD2	1:B:268:VAL:HG11	2.52	0.42
1:B:93:VAL:HG11	1:B:144:THR:HG21	2.01	0.42
1:C:277:TRP:HZ3	1:C:306:LEU:HD12	1.84	0.42
1:C:179:ILE:HG23	1:C:342:TYR:HE2	1.84	0.42
1:C:359:CYS:SG	1:C:359:CYS:O	2.77	0.42
1:A:341:PHE:HB3	1:A:355:ALA:O	2.19	0.42
1:C:134:GLU:HA	1:C:135:PRO:HD3	1.86	0.42
1:A:261:PHE:HA	1:A:266:GLN:O	2.20	0.42
1:C:258:PRO:O	1:C:261:PHE:HB3	2.19	0.42
1:A:365:PHE:CD1	1:A:366:ARG:HG3	2.54	0.42
1:C:257:PHE:CD1	1:C:257:PHE:N	2.87	0.42
1:A:211:GLN:HB2	3:A:664:HOH:O	2.19	0.42
1:B:302:PRO:HG2	1:B:303:GLN:OE1	2.19	0.42
1:C:215:MET:CE	1:C:239:LYS:HG2	2.49	0.42
1:A:258:PRO:C	1:A:260:GLY:H	2.22	0.42
1:C:42:ALA:CB	1:C:101:ALA:HB1	2.49	0.42
1:A:30:LEU:CD1	2:A:501:AR9:H13	2.50	0.42
1:C:55:GLN:NE2	1:C:55:GLN:N	2.59	0.42
1:C:73:GLN:HG3	2:C:501:AR9:H38A	2.00	0.41
1:B:223:ASP:OD2	1:B:224:LYS:NZ	2.48	0.41
1:C:14:TYR:O	1:C:31:VAL:HG22	2.20	0.41
1:A:55:GLN:NE2	1:A:55:GLN:N	2.48	0.41
1:A:302:PRO:HA	1:A:305:TYR:CE2	2.55	0.41
1:A:268:VAL:O	1:A:319:CYS:HA	2.21	0.41
1:A:267:LEU:HD12	1:A:267:LEU:C	2.41	0.41
1:A:20:VAL:HG22	1:A:85:VAL:HG22	2.02	0.41
1:C:197:TRP:CG	1:C:198:TYR:N	2.89	0.41
1:A:235:ARG:HB2	1:A:332:VAL:HB	2.03	0.41

Continued on next page...

Continued from previous page...

Atom-1	Atom-2	Interatomic distance (Å)	Clash overlap (Å)
1:A:363:ASP:OD2	1:A:366:ARG:O	2.39	0.41
1:B:261:PHE:CD1	1:B:268:VAL:HG13	2.56	0.41
1:B:222:TYR:O	1:B:223:ASP:HB3	2.17	0.41
1:C:245:VAL:CG1	1:C:249:LYS:HE3	2.50	0.41
1:C:280:PHE:HB3	1:C:302:PRO:HB3	2.03	0.41
1:A:309:VAL:HG21	1:A:321:LYS:HG3	2.02	0.40
1:C:77:GLU:HB2	1:C:104:GLU:HG3	2.02	0.40
1:B:217:CYS:HA	1:B:220:TYR:CD1	2.56	0.40
1:B:340:GLY:HA2	1:B:360:HIS:HB2	2.03	0.40
1:A:199:TYR:HB3	1:A:352:ILE:HD11	2.03	0.40
1:A:47(P):PHE:CZ	1:A:178:GLY:HA3	2.56	0.40
1:C:311:ASP:OD1	1:C:315:SER:OG	2.39	0.40

There are no symmetry-related clashes.

5.3 Torsion angles [i](#)

5.3.1 Protein backbone [i](#)

In the following table, the Percentiles column shows the percent Ramachandran outliers of the chain as a percentile score with respect to all X-ray entries followed by that with respect to entries of similar resolution.

The Analysed column shows the number of residues for which the backbone conformation was analysed, and the total number of residues.

Mol	Chain	Analysed	Favoured	Allowed	Outliers	Percentiles	
1	A	373/402 (93%)	352 (94%)	17 (5%)	4 (1%)	17	11
1	B	374/402 (93%)	352 (94%)	20 (5%)	2 (0%)	32	28
1	C	377/402 (94%)	363 (96%)	10 (3%)	4 (1%)	17	11
All	All	1124/1206 (93%)	1067 (95%)	47 (4%)	10 (1%)	20	14

All (10) Ramachandran outliers are listed below:

Mol	Chain	Res	Type
1	A	223	ASP
1	A	313	ALA
1	B	223	ASP
1	C	223	ASP
1	A	254	THR

Continued on next page...

Continued from previous page...

Mol	Chain	Res	Type
1	B	312	VAL
1	C	272	ALA
1	C	313	ALA
1	C	314	THR
1	A	156	GLY

5.3.2 Protein sidechains ⓘ

In the following table, the Percentiles column shows the percent sidechain outliers of the chain as a percentile score with respect to all X-ray entries followed by that with respect to entries of similar resolution.

The Analysed column shows the number of residues for which the sidechain conformation was analysed, and the total number of residues.

Mol	Chain	Analysed	Rotameric	Outliers	Percentiles	
1	A	322/342 (94%)	319 (99%)	3 (1%)	82	87
1	B	323/342 (94%)	314 (97%)	9 (3%)	49	52
1	C	324/342 (95%)	317 (98%)	7 (2%)	57	62
All	All	969/1026 (94%)	950 (98%)	19 (2%)	60	66

All (19) residues with a non-rotameric sidechain are listed below:

Mol	Chain	Res	Type
1	A	55	GLN
1	A	197	TRP
1	A	234	LEU
1	B	48(P)	VAL
1	B	92	ASN
1	B	114	ASN
1	B	149	LEU
1	B	170	VAL
1	B	197	TRP
1	B	234	LEU
1	B	256	LYS
1	B	318	ASP
1	C	30	LEU
1	C	55	GLN
1	C	197	TRP
1	C	234	LEU
1	C	257	PHE

Continued on next page...

Continued from previous page...

Mol	Chain	Res	Type
1	C	267	LEU
1	C	317	ASP

Some sidechains can be flipped to improve hydrogen bonding and reduce clashes. All (13) such sidechains are listed below:

Mol	Chain	Res	Type
1	A	55	GLN
1	A	98	ASN
1	A	114	ASN
1	A	326	GLN
1	B	92	ASN
1	B	114	ASN
1	B	266	GLN
1	B	293	ASN
1	B	304	GLN
1	C	55	GLN
1	C	114	ASN
1	C	271	GLN
1	C	294	GLN

5.3.3 RNA [i](#)

There are no RNA molecules in this entry.

5.4 Non-standard residues in protein, DNA, RNA chains [i](#)

There are no non-standard protein/DNA/RNA residues in this entry.

5.5 Carbohydrates [i](#)

There are no carbohydrates in this entry.

5.6 Ligand geometry [i](#)

3 ligands are modelled in this entry.

In the following table, the Counts columns list the number of bonds (or angles) for which Mogul statistics could be retrieved, the number of bonds (or angles) that are observed in the model and the number of bonds (or angles) that are defined in the Chemical Component Dictionary. The

Link column lists molecule types, if any, to which the group is linked. The Z score for a bond length (or angle) is the number of standard deviations the observed value is removed from the expected value. A bond length (or angle) with $|Z| > 2$ is considered an outlier worth inspection. RMSZ is the root-mean-square of all Z scores of the bond lengths (or angles).

Mol	Type	Chain	Res	Link	Bond lengths			Bond angles		
					Counts	RMSZ	# Z > 2	Counts	RMSZ	# Z > 2
2	AR9	A	501	-	31,31,31	0.78	1 (3%)	37,39,39	1.59	6 (16%)
2	AR9	B	501	-	31,31,31	0.72	0	37,39,39	1.53	6 (16%)
2	AR9	C	501	-	31,31,31	0.76	1 (3%)	37,39,39	1.57	5 (13%)

In the following table, the Chirals column lists the number of chiral outliers, the number of chiral centers analysed, the number of these observed in the model and the number defined in the Chemical Component Dictionary. Similar counts are reported in the Torsion and Rings columns. '-' means no outliers of that kind were identified.

Mol	Type	Chain	Res	Link	Chirals	Torsions	Rings
2	AR9	A	501	-	-	0/43/43/43	0/0/1/1
2	AR9	B	501	-	-	0/43/43/43	0/0/1/1
2	AR9	C	501	-	-	0/43/43/43	0/0/1/1

All (2) bond length outliers are listed below:

Mol	Chain	Res	Type	Atoms	Z	Observed(Å)	Ideal(Å)
2	C	501	AR9	C5-C3	2.18	1.56	1.53
2	A	501	AR9	C5-C3	2.34	1.56	1.53

All (17) bond angle outliers are listed below:

Mol	Chain	Res	Type	Atoms	Z	Observed(°)	Ideal(°)
2	A	501	AR9	C54-C51-C47	-4.81	108.01	114.32
2	C	501	AR9	C54-C51-C47	-4.68	108.18	114.32
2	B	501	AR9	C54-C51-C47	-4.36	108.59	114.32
2	A	501	AR9	C8-C5-C3	-3.51	108.36	115.84
2	B	501	AR9	C56-C54-C60	-3.50	103.90	109.31
2	C	501	AR9	C8-C5-C3	-3.27	108.87	115.84
2	B	501	AR9	C8-C5-C3	-3.22	108.97	115.84
2	C	501	AR9	C56-C54-C60	-3.00	104.68	109.31
2	A	501	AR9	C56-C54-C60	-2.98	104.70	109.31
2	A	501	AR9	C5-C3-N1	-2.75	106.56	110.17
2	C	501	AR9	O42-C31-C28	-2.55	117.22	122.01
2	C	501	AR9	C5-C3-N1	-2.53	106.84	110.17
2	A	501	AR9	O42-C31-C28	-2.48	117.34	122.01
2	B	501	AR9	C5-C3-N1	-2.35	107.08	110.17

Continued on next page...

Continued from previous page...

Mol	Chain	Res	Type	Atoms	Z	Observed(°)	Ideal(°)
2	B	501	AR9	O42-C31-C28	-2.28	117.73	122.01
2	B	501	AR9	C34-N32-C31	-2.23	118.17	121.42
2	A	501	AR9	C38-C34-N32	-2.08	106.43	110.34

There are no chirality outliers.

There are no torsion outliers.

There are no ring outliers.

3 monomers are involved in 5 short contacts:

Mol	Chain	Res	Type	Clashes	Symm-Clashes
2	A	501	AR9	3	0
2	B	501	AR9	1	0
2	C	501	AR9	1	0

5.7 Other polymers [i](#)

There are no such residues in this entry.

5.8 Polymer linkage issues [i](#)

There are no chain breaks in this entry.

6 Fit of model and data ⓘ

6.1 Protein, DNA and RNA chains ⓘ

In the following table, the column labelled ‘#RSRZ> 2’ contains the number (and percentage) of RSRZ outliers, followed by percent RSRZ outliers for the chain as percentile scores relative to all X-ray entries and entries of similar resolution. The OWAB column contains the minimum, median, 95th percentile and maximum values of the occupancy-weighted average B-factor per residue. The column labelled ‘Q< 0.9’ lists the number of (and percentage) of residues with an average occupancy less than 0.9.

Mol	Chain	Analysed	<RSRZ>	#RSRZ>2		OWAB(Å ²)	Q<0.9
1	A	377/402 (93%)	0.58	27 (7%)	16 21	28, 43, 74, 110	0
1	B	378/402 (94%)	0.65	36 (9%)	9 12	26, 44, 93, 125	0
1	C	381/402 (94%)	0.42	22 (5%)	24 30	28, 41, 75, 102	0
All	All	1136/1206 (94%)	0.55	85 (7%)	15 19	26, 42, 84, 125	0

All (85) RSRZ outliers are listed below:

Mol	Chain	Res	Type	RSRZ
1	B	312	VAL	15.9
1	A	312	VAL	12.3
1	B	314	THR	11.8
1	B	313	ALA	9.6
1	B	386	ILE	6.8
1	C	313	ALA	6.6
1	B	256	LYS	5.8
1	C	312	VAL	5.5
1	B	310	GLU	5.5
1	A	311	ASP	5.4
1	B	311	ASP	5.2
1	B	315	SER	5.1
1	A	314	THR	5.1
1	C	362	HIS	4.6
1	B	316	GLN	4.3
1	B	254	THR	4.3
1	B	257	PHE	4.1
1	A	316	GLN	4.1
1	A	259	ASP	4.0
1	A	313	ALA	4.0
1	B	268	VAL	3.9
1	C	256	LYS	3.8
1	C	365	PHE	3.8

Continued on next page...

Continued from previous page...

Mol	Chain	Res	Type	RSRZ
1	C	272	ALA	3.6
1	A	362	HIS	3.6
1	C	316	GLN	3.6
1	B	262	TRP	3.5
1	B	317	ASP	3.5
1	A	23	PRO	3.4
1	C	46(P)	SER	3.4
1	A	258	PRO	3.4
1	C	314	THR	3.4
1	A	257	PHE	3.4
1	C	258	PRO	3.3
1	B	46(P)	SER	3.3
1	B	365	PHE	3.3
1	B	271	GLN	3.3
1	A	43	ALA	3.3
1	A	256	LYS	3.2
1	A	317	ASP	3.1
1	B	364	GLU	3.1
1	B	252	SER	3.1
1	C	273	GLY	3.0
1	A	310	GLU	3.0
1	B	319	CYS	3.0
1	B	309	VAL	2.9
1	C	361	VAL	2.9
1	A	365	PHE	2.9
1	B	253	SER	2.9
1	C	259	ASP	2.9
1	A	315	SER	2.9
1	B	318	ASP	2.8
1	B	269	CYS	2.8
1	A	265	GLU	2.8
1	C	266	GLN	2.7
1	C	159	PHE	2.7
1	B	258	PRO	2.7
1	C	270	TRP	2.7
1	B	266	GLN	2.6
1	B	245	VAL	2.6
1	A	49	HIS	2.6
1	C	145	HIS	2.6
1	C	257	PHE	2.5
1	A	363	ASP	2.5
1	B	255	GLU	2.4

Continued on next page...

Continued from previous page...

Mol	Chain	Res	Type	RSRZ
1	A	260	GLY	2.4
1	B	249	LYS	2.4
1	B	211	GLN	2.4
1	A	269	CYS	2.4
1	B	145	HIS	2.4
1	A	64	ARG	2.3
1	C	310	GLU	2.3
1	C	158	GLY	2.3
1	A	364	GLU	2.3
1	A	309	VAL	2.3
1	C	268	VAL	2.2
1	C	55	GLN	2.2
1	A	267	LEU	2.2
1	A	266	GLN	2.2
1	A	145	HIS	2.2
1	B	46	PRO	2.2
1	B	267	LEU	2.1
1	B	278	ASN	2.1
1	B	55	GLN	2.1
1	B	214	LYS	2.0

6.2 Non-standard residues in protein, DNA, RNA chains [i](#)

There are no non-standard protein/DNA/RNA residues in this entry.

6.3 Carbohydrates [i](#)

There are no carbohydrates in this entry.

6.4 Ligands [i](#)

In the following table, the Atoms column lists the number of modelled atoms in the group and the number defined in the chemical component dictionary. LLDF column lists the quality of electron density of the group with respect to its neighbouring residues in protein, DNA or RNA chains. The B-factors column lists the minimum, median, 95th percentile and maximum values of B factors of atoms in the group. The column labelled 'Q< 0.9' lists the number of atoms with occupancy less than 0.9.

Mol	Type	Chain	Res	Atoms	RSCC	RSR	LLDF	B-factors(Å ²)	Q<0.9
2	AR9	B	501	31/31	0.95	0.16	1.76	30,36,46,48	0

Continued on next page...

Continued from previous page...

Mol	Type	Chain	Res	Atoms	RSCC	RSR	LLDF	B-factors(\AA^2)	Q<0.9
2	AR9	C	501	31/31	0.95	0.17	1.30	30,34,40,42	0
2	AR9	A	501	31/31	0.94	0.16	1.28	32,37,43,44	0

6.5 Other polymers [i](#)

There are no such residues in this entry.