



# Full wwPDB X-ray Structure Validation Report ⓘ

Feb 13, 2017 – 09:06 am GMT

PDB ID : 2DXU  
Title : Crystal Structure Of Biotin Protein Ligase From Pyrococcus Horikoshii Complexed with Biotinyl-5'-AMP, Mutation R48A  
Authors : Bagautdinov, B.; Taketa, M.; Matsuura, Y.; Kunishima, N.; RIKEN Structural Genomics/Proteomics Initiative (RSGI)  
Deposited on : 2006-08-30  
Resolution : 1.28 Å(reported)

This is a Full wwPDB X-ray Structure Validation Report for a publicly released PDB entry.

We welcome your comments at [validation@mail.wwpdb.org](mailto:validation@mail.wwpdb.org)

A user guide is available at

<http://wwpdb.org/validation/2016/XrayValidationReportHelp>

with specific help available everywhere you see the ⓘ symbol.

---

The following versions of software and data (see [references ⓘ](#)) were used in the production of this report:

MolProbity	:	4.02b-467
Mogul	:	1.7.2 (RC1), CSD as538be (2017)
Xtriage (Phenix)	:	1.9-1692
EDS	:	trunk28620
Percentile statistics	:	20161228.v01 (using entries in the PDB archive December 28th 2016)
Refmac	:	5.8.0135
CCP4	:	6.5.0
Ideal geometry (proteins)	:	Engh & Huber (2001)
Ideal geometry (DNA, RNA)	:	Parkinson et al. (1996)
Validation Pipeline (wwPDB-VP)	:	recalc28949

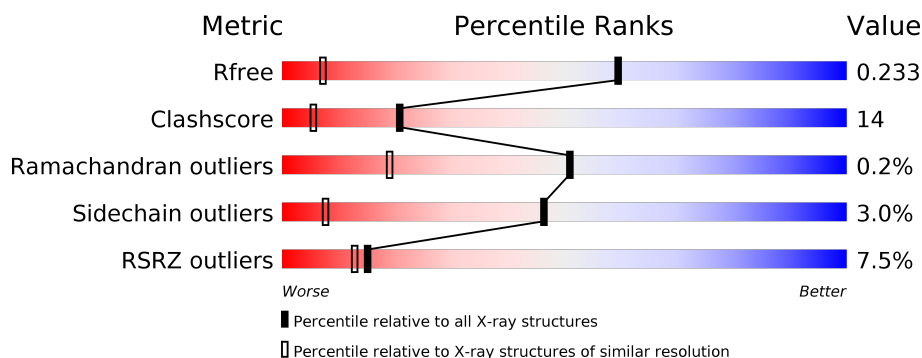
# 1 Overall quality at a glance

The following experimental techniques were used to determine the structure:

## *X-RAY DIFFRACTION*

The reported resolution of this entry is 1.28 Å.

Percentile scores (ranging between 0-100) for global validation metrics of the entry are shown in the following graphic. The table shows the number of entries on which the scores are based.



Metric	Whole archive (#Entries)	Similar resolution (#Entries, resolution range(Å))
$R_{free}$	100719	1367 (1.30-1.26)
Clashscore	112137	1447 (1.30-1.26)
Ramachandran outliers	110173	1392 (1.30-1.26)
Sidechain outliers	110143	1391 (1.30-1.26)
RSRZ outliers	101464	1370 (1.30-1.26)

The table below summarises the geometric issues observed across the polymeric chains and their fit to the electron density. The red, orange, yellow and green segments on the lower bar indicate the fraction of residues that contain outliers for  $\geq 3$ , 2, 1 and 0 types of geometric quality criteria. A grey segment represents the fraction of residues that are not modelled. The numeric value for each fraction is indicated below the corresponding segment, with a dot representing fractions  $\leq 5\%$ . The upper red bar (where present) indicates the fraction of residues that have poor fit to the electron density. The numeric value is given above the bar.

Mol	Chain	Length	Quality of chain
1	A	235	<div> <div>8%</div> <div> <div></div> <div>76%</div> <div>21%</div> <div>••</div> </div> </div>
1	B	235	<div> <div>6%</div> <div> <div></div> <div>75%</div> <div>17%</div> <div>• 6%</div> </div> </div>

## 2 Entry composition [i](#)

There are 3 unique types of molecules in this entry. The entry contains 4146 atoms, of which 0 are hydrogens and 0 are deuteriums.

In the tables below, the ZeroOcc column contains the number of atoms modelled with zero occupancy, the AltConf column contains the number of residues with at least one atom in alternate conformation and the Trace column contains the number of residues modelled with at most 2 atoms.

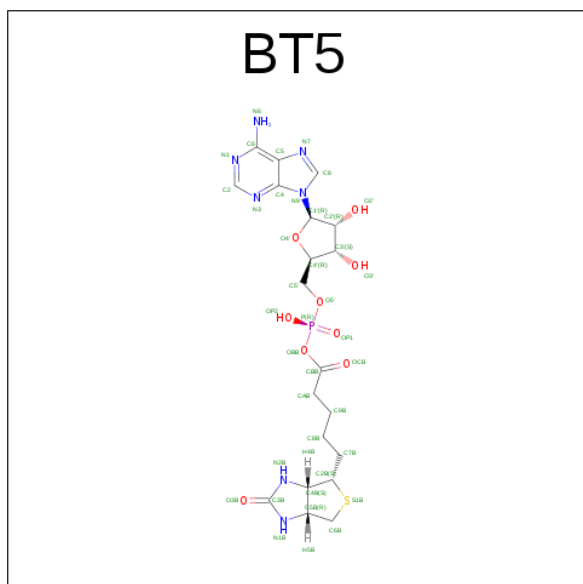
- Molecule 1 is a protein called biotin--[acetyl-CoA-carboxylase] ligase.

Mol	Chain	Residues	Atoms					ZeroOcc	AltConf	Trace
1	A	231	Total	C	N	O	S	0	0	0
			1807	1168	304	330	5			
1	B	221	Total	C	N	O	S	0	0	0
			1723	1112	291	315	5			

There are 2 discrepancies between the modelled and reference sequences:

Chain	Residue	Modelled	Actual	Comment	Reference
A	48	ALA	ARG	ENGINEERED	UNP O57883
B	48	ALA	ARG	ENGINEERED	UNP O57883

- Molecule 2 is BIOTINYL-5-AMP (three-letter code: BT5) (formula: C<sub>20</sub>H<sub>28</sub>N<sub>7</sub>O<sub>9</sub>PS).



Mol	Chain	Residues	Atoms					ZeroOcc	AltConf
2	B	2	Total	C	N	O	P S	0	0
			76	40	14	18	2 2		

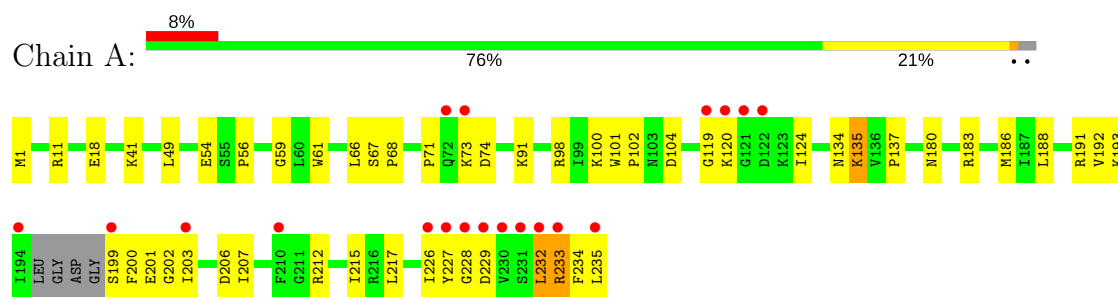
- Molecule 3 is water.

Mol	Chain	Residues	Atoms		ZeroOcc	AltConf
3	A	276	Total 276	O 276	0	0
3	B	264	Total 264	O 264	0	0

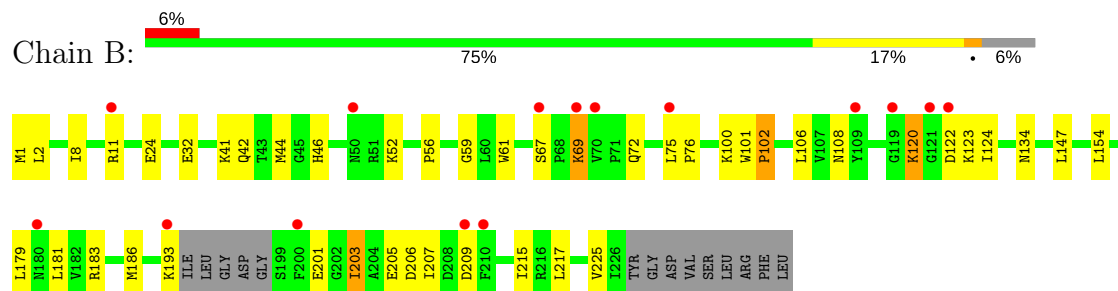
### 3 Residue-property plots [i](#)

These plots are drawn for all protein, RNA and DNA chains in the entry. The first graphic for a chain summarises the proportions of the various outlier classes displayed in the second graphic. The second graphic shows the sequence view annotated by issues in geometry and electron density. Residues are color-coded according to the number of geometric quality criteria for which they contain at least one outlier: green = 0, yellow = 1, orange = 2 and red = 3 or more. A red dot above a residue indicates a poor fit to the electron density ( $RSRZ > 2$ ). Stretches of 2 or more consecutive residues without any outlier are shown as a green connector. Residues present in the sample, but not in the model, are shown in grey.

- Molecule 1: biotin--[acetyl-CoA-carboxylase] ligase



- Molecule 1: biotin--[acetyl-CoA-carboxylase] ligase



## 4 Data and refinement statistics

Property	Value	Source
Space group	P 1 21 1	Depositor
Cell constants a, b, c, $\alpha$ , $\beta$ , $\gamma$	38.24Å 82.85Å 72.35Å 90.00° 101.37° 90.00°	Depositor
Resolution (Å)	37.49 – 1.28 37.49 – 1.28	Depositor EDS
% Data completeness (in resolution range)	97.0 (37.49-1.28) 97.0 (37.49-1.28)	Depositor EDS
$R_{merge}$	0.07	Depositor
$R_{sym}$	0.05	Depositor
$\langle I/\sigma(I) \rangle$ <sup>1</sup>	8.41 (at 1.28Å)	Xtriage
Refinement program	CNS 1.1	Depositor
R, $R_{free}$	0.223 , 0.233 0.223 , 0.233	Depositor DCC
$R_{free}$ test set	5518 reflections (5.03%)	DCC
Wilson B-factor (Å <sup>2</sup> )	12.1	Xtriage
Anisotropy	0.644	Xtriage
Bulk solvent $k_{sol}$ (e/Å <sup>3</sup> ), $B_{sol}$ (Å <sup>2</sup> )	0.38 , 52.6	EDS
L-test for twinning <sup>2</sup>	$\langle  L  \rangle = 0.49$ , $\langle L^2 \rangle = 0.33$	Xtriage
Estimated twinning fraction	No twinning to report.	Xtriage
$F_o, F_c$ correlation	0.95	EDS
Total number of atoms	4146	wwPDB-VP
Average B, all atoms (Å <sup>2</sup> )	17.0	wwPDB-VP

Xtriage's analysis on translational NCS is as follows: *The largest off-origin peak in the Patterson function is 5.92% of the height of the origin peak. No significant pseudotranslation is detected.*

<sup>1</sup>Intensities estimated from amplitudes.

<sup>2</sup>Theoretical values of  $\langle |L| \rangle$ ,  $\langle L^2 \rangle$  for acentric reflections are 0.5, 0.333 respectively for untwinned datasets, and 0.375, 0.2 for perfectly twinned datasets.

## 5 Model quality

### 5.1 Standard geometry

Bond lengths and bond angles in the following residue types are not validated in this section: BT5

The Z score for a bond length (or angle) is the number of standard deviations the observed value is removed from the expected value. A bond length (or angle) with  $|Z| > 5$  is considered an outlier worth inspection. RMSZ is the root-mean-square of all Z scores of the bond lengths (or angles).

Mol	Chain	Bond lengths		Bond angles	
		RMSZ	$\# Z  > 5$	RMSZ	$\# Z  > 5$
1	A	0.35	0/1834	0.65	0/2473
1	B	0.34	0/1748	0.63	0/2358
All	All	0.35	0/3582	0.64	0/4831

There are no bond length outliers.

There are no bond angle outliers.

There are no chirality outliers.

There are no planarity outliers.

### 5.2 Too-close contacts

In the following table, the Non-H and H(model) columns list the number of non-hydrogen atoms and hydrogen atoms in the chain respectively. The H(added) column lists the number of hydrogen atoms added and optimized by MolProbity. The Clashes column lists the number of clashes within the asymmetric unit, whereas Symm-Clashes lists symmetry related clashes.

Mol	Chain	Non-H	H(model)	H(added)	Clashes	Symm-Clashes
1	A	1807	0	1904	58	0
1	B	1723	0	1819	44	0
2	B	76	0	50	0	0
3	A	276	0	0	12	0
3	B	264	0	0	16	0
All	All	4146	0	3773	102	0

The all-atom clashscore is defined as the number of clashes found per 1000 atoms (including hydrogen atoms). The all-atom clashscore for this structure is 14.

All (102) close contacts within the same asymmetric unit are listed below, sorted by their clash magnitude.

Atom-1	Atom-2	Interatomic distance (Å)	Clash overlap (Å)
1:A:101:TRP:O	1:A:232:LEU:HD21	1.79	0.81
1:A:180:ASN:HA	1:A:183:ARG:NH1	2.01	0.74
1:A:233:ARG:NH1	1:A:233:ARG:HA	2.04	0.72
1:B:123:LYS:HB2	3:B:2523:HOH:O	1.91	0.69
1:B:147:LEU:HD13	3:B:2477:HOH:O	1.93	0.67
1:A:233:ARG:HA	1:A:233:ARG:CZ	2.25	0.66
1:A:200:PHE:HE1	1:A:215:ILE:HG21	1.61	0.65
1:B:69:LYS:HE2	3:B:2500:HOH:O	1.98	0.64
1:B:209:ASP:HB3	3:B:2559:HOH:O	1.96	0.64
1:B:122:ASP:N	3:B:2554:HOH:O	2.31	0.63
1:A:186:MET:HG3	1:A:188:LEU:HG	1.80	0.63
1:A:200:PHE:CE1	1:A:215:ILE:HD13	2.34	0.63
1:A:200:PHE:HE1	1:A:215:ILE:HD13	1.63	0.63
1:A:119:GLY:C	1:A:120:LYS:HD2	2.20	0.62
1:B:69:LYS:H	1:B:69:LYS:CD	2.14	0.61
1:B:215:ILE:HG13	3:B:2496:HOH:O	2.01	0.61
1:A:212:ARG:HD3	1:A:226:ILE:HD11	1.82	0.61
1:A:203:ILE:HD13	3:A:345:HOH:O	2.00	0.60
1:B:225:VAL:HG21	3:B:2496:HOH:O	2.01	0.60
1:A:18:GLU:OE2	1:A:41:LYS:HE3	2.01	0.60
1:A:54:GLU:CD	1:A:137:PRO:HB3	2.23	0.59
1:A:226:ILE:HG23	3:A:441:HOH:O	2.03	0.59
1:A:54:GLU:OE2	1:A:137:PRO:HB3	2.03	0.58
1:A:100:LYS:HE3	1:A:233:ARG:HH12	1.69	0.58
1:A:91:LYS:HG3	3:A:370:HOH:O	2.04	0.56
1:A:183:ARG:NE	3:A:429:HOH:O	2.27	0.56
1:A:203:ILE:N	1:A:203:ILE:HD12	2.21	0.56
1:A:180:ASN:CG	1:A:183:ARG:HH12	2.09	0.56
1:A:183:ARG:HD3	1:A:206:ASP:OD1	2.05	0.56
1:A:212:ARG:HG2	1:A:226:ILE:HD13	1.88	0.56
1:A:183:ARG:NH2	3:A:449:HOH:O	2.38	0.55
1:B:69:LYS:H	1:B:69:LYS:HD2	1.71	0.55
1:B:75:LEU:HD22	1:B:124:ILE:HD11	1.87	0.55
1:A:135:LYS:HB3	1:A:135:LYS:NZ	2.21	0.55
1:B:67:SER:O	1:B:69:LYS:HE3	2.06	0.55
1:A:232:LEU:HD12	3:A:422:HOH:O	2.05	0.55
1:B:76:PRO:HA	3:B:2447:HOH:O	2.06	0.54
1:A:67:SER:N	1:A:68:PRO:HD3	2.22	0.54
1:A:120:LYS:HD2	1:A:120:LYS:N	2.23	0.54
1:A:200:PHE:CE1	1:A:215:ILE:HG21	2.42	0.54
1:A:101:TRP:HE3	1:A:232:LEU:CD2	2.21	0.53
1:A:71:PRO:HD2	1:A:74:ASP:OD2	2.09	0.53

Continued on next page...



*Continued from previous page...*

Atom-1	Atom-2	Interatomic distance (Å)	Clash overlap (Å)
1:B:203:ILE:N	1:B:203:ILE:CD1	2.71	0.53
1:A:66:LEU:C	1:A:68:PRO:HD3	2.29	0.52
1:A:183:ARG:NH2	3:A:429:HOH:O	2.42	0.52
1:A:49:LEU:HD11	1:A:229:ASP:OD1	2.09	0.52
1:A:183:ARG:HG2	1:A:207:ILE:HG12	1.92	0.51
1:A:226:ILE:HD13	3:A:441:HOH:O	2.10	0.51
1:A:56:PRO:HG2	1:A:134:ASN:HB2	1.93	0.51
1:B:72:GLN:NE2	1:B:75:LEU:HD12	2.25	0.51
1:B:108:ASN:HB3	3:B:2478:HOH:O	2.11	0.50
1:B:193:LYS:HE3	1:B:201:GLU:OE2	2.13	0.49
1:B:56:PRO:HG2	1:B:134:ASN:HB2	1.94	0.49
1:B:120:LYS:HE3	1:B:123:LYS:HE2	1.95	0.49
1:A:101:TRP:HE3	1:A:232:LEU:HD21	1.78	0.47
1:A:202:GLY:N	1:A:215:ILE:HD11	2.29	0.47
1:B:120:LYS:CE	1:B:123:LYS:HE2	2.45	0.47
1:B:72:GLN:NE2	3:B:2476:HOH:O	2.22	0.47
1:A:59:GLY:HA3	1:A:61:TRP:CZ2	2.49	0.47
1:A:180:ASN:HA	1:A:183:ARG:HH12	1.78	0.47
1:B:207:ILE:HD12	1:B:207:ILE:O	2.14	0.47
1:B:101:TRP:CE2	1:B:102:PRO:HB3	2.49	0.47
1:B:181:LEU:HD11	3:B:2498:HOH:O	2.14	0.47
1:B:75:LEU:HD22	1:B:124:ILE:CD1	2.45	0.47
1:A:100:LYS:HB3	1:A:104:ASP:HB2	1.97	0.46
1:B:32:GLU:HG3	3:B:2408:HOH:O	2.14	0.46
1:B:186:MET:HE1	1:B:207:ILE:HG23	1.97	0.46
1:B:8:ILE:O	1:B:11:ARG:HG3	2.15	0.46
1:B:186:MET:HB3	1:B:186:MET:HE3	1.74	0.45
1:A:135:LYS:HZ3	1:A:135:LYS:HB3	1.81	0.45
1:B:41:LYS:HG2	1:B:42:GLN:N	2.31	0.45
1:A:217:LEU:HD12	1:A:217:LEU:N	2.32	0.45
1:B:154:LEU:HD13	3:B:2480:HOH:O	2.17	0.45
1:B:100:LYS:HD2	1:B:106:LEU:HD11	1.99	0.44
1:B:120:LYS:C	1:B:120:LYS:HD2	2.38	0.44
1:A:226:ILE:CD1	3:A:441:HOH:O	2.66	0.44
1:A:11:ARG:HH11	1:A:11:ARG:HG2	1.83	0.43
1:B:59:GLY:HA3	1:B:61:TRP:CZ2	2.53	0.43
1:B:179:LEU:O	1:B:183:ARG:HG3	2.17	0.43
1:B:217:LEU:N	1:B:217:LEU:HD12	2.34	0.43
1:B:72:GLN:HE22	1:B:75:LEU:HD12	1.83	0.43
1:A:193:LYS:HG3	1:A:201:GLU:HG2	2.00	0.43
1:B:203:ILE:HD12	1:B:203:ILE:N	2.32	0.43

*Continued on next page...*

Continued from previous page...

Atom-1	Atom-2	Interatomic distance (Å)	Clash overlap (Å)
1:B:205:GLU:O	1:B:206:ASP:HB2	2.17	0.43
1:B:52:LYS:HG3	3:B:2392:HOH:O	2.18	0.43
1:B:154:LEU:CD1	3:B:2480:HOH:O	2.67	0.42
1:A:235:LEU:HD12	1:A:235:LEU:N	2.34	0.42
1:A:227:TYR:HE2	3:A:364:HOH:O	2.01	0.42
1:A:201:GLU:OE2	1:A:235:LEU:HD21	2.20	0.42
1:B:24:GLU:HG2	1:B:46:HIS:HE1	1.84	0.42
1:A:119:GLY:HA3	1:A:124:ILE:HD13	2.02	0.41
1:A:191:ARG:HH11	1:A:235:LEU:CD2	2.32	0.41
1:A:233:ARG:HD2	1:A:233:ARG:HH11	1.72	0.41
1:A:233:ARG:CZ	1:A:234:PHE:H	2.34	0.41
1:B:44:MET:HE2	1:B:44:MET:HA	2.03	0.41
1:A:212:ARG:HD3	1:A:226:ILE:CD1	2.51	0.41
1:A:232:LEU:HD23	1:A:232:LEU:N	2.36	0.41
1:B:101:TRP:CD2	1:B:102:PRO:HB3	2.56	0.41
1:A:192:VAL:HG12	1:A:234:PHE:CD1	2.56	0.41
1:B:2:LEU:CD2	3:B:2480:HOH:O	2.69	0.40
1:A:226:ILE:CD1	3:A:493:HOH:O	2.69	0.40
1:A:98:ARG:NH2	3:A:356:HOH:O	2.50	0.40

There are no symmetry-related clashes.

## 5.3 Torsion angles ⓘ

### 5.3.1 Protein backbone ⓘ

In the following table, the Percentiles column shows the percent Ramachandran outliers of the chain as a percentile score with respect to all X-ray entries followed by that with respect to entries of similar resolution.

The Analysed column shows the number of residues for which the backbone conformation was analysed, and the total number of residues.

Mol	Chain	Analysed	Favoured	Allowed	Outliers	Percentiles	
1	A	227/235 (97%)	220 (97%)	6 (3%)	1 (0%)	38	10
1	B	217/235 (92%)	213 (98%)	4 (2%)	0	100	100
All	All	444/470 (94%)	433 (98%)	10 (2%)	1 (0%)	51	19

All (1) Ramachandran outliers are listed below:

Mol	Chain	Res	Type
1	A	228	GLY

### 5.3.2 Protein sidechains [i](#)

In the following table, the Percentiles column shows the percent sidechain outliers of the chain as a percentile score with respect to all X-ray entries followed by that with respect to entries of similar resolution.

The Analysed column shows the number of residues for which the sidechain conformation was analysed, and the total number of residues.

Mol	Chain	Analysed	Rotameric	Outliers	Percentiles
1	A	202/204 (99%)	195 (96%)	7 (4%)	41 5
1	B	193/204 (95%)	188 (97%)	5 (3%)	51 10
All	All	395/408 (97%)	383 (97%)	12 (3%)	46 8

All (12) residues with a non-rotameric sidechain are listed below:

Mol	Chain	Res	Type
1	A	1	MET
1	A	73	LYS
1	A	102	PRO
1	A	135	LYS
1	A	199	SER
1	A	232	LEU
1	A	233	ARG
1	B	1	MET
1	B	69	LYS
1	B	102	PRO
1	B	120	LYS
1	B	203	ILE

Some sidechains can be flipped to improve hydrogen bonding and reduce clashes. All (2) such sidechains are listed below:

Mol	Chain	Res	Type
1	A	138	ASN
1	B	46	HIS

### 5.3.3 RNA [i](#)

There are no RNA molecules in this entry.

## 5.4 Non-standard residues in protein, DNA, RNA chains [i](#)

There are no non-standard protein/DNA/RNA residues in this entry.

## 5.5 Carbohydrates [i](#)

There are no carbohydrates in this entry.

## 5.6 Ligand geometry [i](#)

2 ligands are modelled in this entry.

In the following table, the Counts columns list the number of bonds (or angles) for which Mogul statistics could be retrieved, the number of bonds (or angles) that are observed in the model and the number of bonds (or angles) that are defined in the chemical component dictionary. The Link column lists molecule types, if any, to which the group is linked. The Z score for a bond length (or angle) is the number of standard deviations the observed value is removed from the expected value. A bond length (or angle) with  $|Z| > 2$  is considered an outlier worth inspection. RMSZ is the root-mean-square of all Z scores of the bond lengths (or angles).

Mol	Type	Chain	Res	Link	Bond lengths			Bond angles		
					Counts	RMSZ	$\# Z  > 2$	Counts	RMSZ	$\# Z  > 2$
2	BT5	B	2301	-	38,42,42	2.15	11 (28%)	44,62,62	2.46	10 (22%)
2	BT5	B	2302	-	38,42,42	2.21	11 (28%)	44,62,62	2.49	11 (25%)

In the following table, the Chirals column lists the number of chiral outliers, the number of chiral centers analysed, the number of these observed in the model and the number defined in the chemical component dictionary. Similar counts are reported in the Torsion and Rings columns. '-' means no outliers of that kind were identified.

Mol	Type	Chain	Res	Link	Chirals	Torsions	Rings
2	BT5	B	2301	-	-	0/16/59/59	0/5/5/5
2	BT5	B	2302	-	-	0/16/59/59	0/5/5/5

All (22) bond length outliers are listed below:

Mol	Chain	Res	Type	Atoms	Z	Observed(Å)	Ideal(Å)
2	B	2302	BT5	C9B-CAB	-6.47	1.28	1.52
2	B	2301	BT5	C9B-CAB	-6.39	1.28	1.52
2	B	2302	BT5	P-O5'	-3.56	1.44	1.59
2	B	2301	BT5	P-O5'	-3.25	1.45	1.59
2	B	2302	BT5	P-OP2	-3.16	1.39	1.55
2	B	2301	BT5	P-OP2	-3.13	1.39	1.55

*Continued on next page...*

*Continued from previous page...*

Mol	Chain	Res	Type	Atoms	Z	Observed(Å)	Ideal(Å)
2	B	2301	BT5	C5'-C4'	-2.51	1.43	1.51
2	B	2302	BT5	C5'-C4'	-2.37	1.44	1.51
2	B	2302	BT5	C2B-S1B	-2.23	1.79	1.82
2	B	2301	BT5	C2B-S1B	-2.07	1.79	1.82
2	B	2302	BT5	O4'-C1'	2.06	1.44	1.41
2	B	2302	BT5	C2B-C4B	2.24	1.57	1.53
2	B	2301	BT5	O4'-C1'	2.38	1.44	1.41
2	B	2301	BT5	C2B-C4B	2.39	1.57	1.53
2	B	2301	BT5	C4-N3	3.15	1.40	1.35
2	B	2302	BT5	C4-N3	3.50	1.40	1.35
2	B	2301	BT5	C2-N1	3.78	1.41	1.33
2	B	2302	BT5	C2-N1	4.13	1.41	1.33
2	B	2301	BT5	P-OBB	4.50	1.69	1.61
2	B	2302	BT5	P-OBB	4.72	1.70	1.61
2	B	2301	BT5	C2-N3	4.93	1.40	1.32
2	B	2302	BT5	C2-N3	5.48	1.41	1.32

All (21) bond angle outliers are listed below:

Mol	Chain	Res	Type	Atoms	Z	Observed(°)	Ideal(°)
2	B	2302	BT5	N3-C2-N1	-11.23	119.08	128.86
2	B	2301	BT5	N3-C2-N1	-11.06	119.23	128.86
2	B	2301	BT5	C5B-C6B-S1B	-6.57	101.52	106.24
2	B	2302	BT5	C5B-C6B-S1B	-6.46	101.59	106.24
2	B	2301	BT5	C2B-C4B-C5B	-4.85	104.77	108.78
2	B	2302	BT5	C2B-C4B-C5B	-4.67	104.92	108.78
2	B	2301	BT5	C5B-N1B-C3B	-2.71	109.50	112.45
2	B	2302	BT5	C5B-N1B-C3B	-2.46	109.77	112.45
2	B	2301	BT5	C1'-N9-C4	-2.03	123.12	126.64
2	B	2301	BT5	C2B-C4B-N2B	2.07	115.05	113.13
2	B	2302	BT5	C4'-O4'-C1'	2.07	111.98	109.77
2	B	2302	BT5	OP2-P-O5'	2.12	118.15	108.14
2	B	2302	BT5	C2-N1-C6	2.19	122.60	118.77
2	B	2301	BT5	C2-N1-C6	2.35	122.88	118.77
2	B	2301	BT5	C6B-C5B-C4B	2.41	110.72	108.70
2	B	2301	BT5	C9B-CAB-CBB	2.52	122.79	113.58
2	B	2302	BT5	C2B-C4B-N2B	2.71	115.65	113.13
2	B	2302	BT5	C9B-CAB-CBB	2.73	123.53	113.58
2	B	2302	BT5	C6B-C5B-C4B	2.78	111.02	108.70
2	B	2302	BT5	N2B-C3B-N1B	2.98	111.15	108.85
2	B	2301	BT5	N2B-C3B-N1B	3.02	111.18	108.85

There are no chirality outliers.

There are no torsion outliers.

There are no ring outliers.

No monomer is involved in short contacts.

## 5.7 Other polymers

There are no such residues in this entry.

## 5.8 Polymer linkage issues

There are no chain breaks in this entry.

## 6 Fit of model and data

### 6.1 Protein, DNA and RNA chains

In the following table, the column labelled ‘#RSRZ > 2’ contains the number (and percentage) of RSRZ outliers, followed by percent RSRZ outliers for the chain as percentile scores relative to all X-ray entries and entries of similar resolution. The OWAB column contains the minimum, median, 95<sup>th</sup> percentile and maximum values of the occupancy-weighted average B-factor per residue. The column labelled ‘Q < 0.9’ lists the number of (and percentage) of residues with an average occupancy less than 0.9.

Mol	Chain	Analysed	<RSRZ>	#RSRZ>2	OWAB(Å <sup>2</sup> )	Q<0.9
1	A	231/235 (98%)	0.71	19 (8%) 12 10	7, 13, 26, 41	0
1	B	221/235 (94%)	0.68	15 (6%) 18 16	8, 15, 26, 35	0
All	All	452/470 (96%)	0.70	34 (7%) 15 13	7, 14, 26, 41	0

All (34) RSRZ outliers are listed below:

Mol	Chain	Res	Type	RSRZ
1	B	109	TYR	6.9
1	A	229	ASP	6.6
1	A	120	LYS	5.2
1	B	122	ASP	4.6
1	A	230	VAL	4.1
1	A	227	TYR	4.0
1	B	119	GLY	4.0
1	A	122	ASP	3.9
1	A	226	ILE	3.5
1	B	200	PHE	3.4
1	B	209	ASP	3.4
1	A	235	LEU	3.3
1	A	72	GLN	3.3
1	A	231	SER	3.2
1	A	232	LEU	3.2
1	B	50	ASN	3.1
1	A	228	GLY	3.0
1	B	69	LYS	3.0
1	A	121	GLY	3.0
1	B	75	LEU	2.9
1	A	210	PHE	2.7
1	A	199	SER	2.6
1	B	210	PHE	2.5
1	B	180	ASN	2.5

*Continued on next page...*

*Continued from previous page...*

Mol	Chain	Res	Type	RSRZ
1	A	119	GLY	2.4
1	B	70	VAL	2.4
1	A	194	ILE	2.3
1	A	233	ARG	2.3
1	B	11	ARG	2.3
1	A	73	LYS	2.2
1	B	121	GLY	2.1
1	B	193	LYS	2.0
1	B	67	SER	2.0
1	A	203	ILE	2.0

## 6.2 Non-standard residues in protein, DNA, RNA chains [i](#)

There are no non-standard protein/DNA/RNA residues in this entry.

## 6.3 Carbohydrates [i](#)

There are no carbohydrates in this entry.

## 6.4 Ligands [i](#)

In the following table, the Atoms column lists the number of modelled atoms in the group and the number defined in the chemical component dictionary. LLDF column lists the quality of electron density of the group with respect to its neighbouring residues in protein, DNA or RNA chains. The B-factors column lists the minimum, median, 95<sup>th</sup> percentile and maximum values of B factors of atoms in the group. The column labelled 'Q< 0.9' lists the number of atoms with occupancy less than 0.9.

Mol	Type	Chain	Res	Atoms	RSCC	RSR	LLDF	B-factors( $\text{\AA}^2$ )	Q<0.9
2	BT5	B	2302	38/38	0.93	0.10	0.30	10,15,20,21	0
2	BT5	B	2301	38/38	0.95	0.09	-0.38	7,10,16,16	0

## 6.5 Other polymers [i](#)

There are no such residues in this entry.