



Full wwPDB X-ray Structure Validation Report ⓘ

Feb 14, 2017 – 01:44 pm GMT

PDB ID : 3DX4
Title : Golgi alpha-Mannosidase II in complex with Mannostatin analog (1R,2R,3R,4S,5R)-4-amino-5-methoxycyclopentane-1,2,3-triol
Authors : Kuntz, D.A.; Rose, D.R.
Deposited on : 2008-07-23
Resolution : 1.38 Å(reported)

This is a Full wwPDB X-ray Structure Validation Report for a publicly released PDB entry.

We welcome your comments at validation@mail.wwpdb.org

A user guide is available at

<http://wwpdb.org/validation/2016/XrayValidationReportHelp>

with specific help available everywhere you see the ⓘ symbol.

The following versions of software and data (see [references ⓘ](#)) were used in the production of this report:

MolProbity : 4.02b-467
Mogul : 1.7.2 (RC1), CSD as538be (2017)
Xtriage (Phenix) : 1.9-1692
EDS : trunk28620
Percentile statistics : 20161228.v01 (using entries in the PDB archive December 28th 2016)
Refmac : 5.8.0135
CCP4 : 6.5.0
Ideal geometry (proteins) : Engh & Huber (2001)
Ideal geometry (DNA, RNA) : Parkinson et al. (1996)
Validation Pipeline (wwPDB-VP) : recalc28949

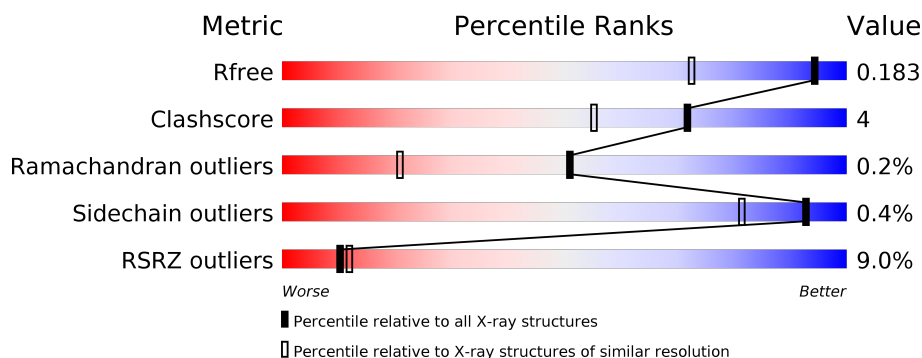
1 Overall quality at a glance

The following experimental techniques were used to determine the structure:

X-RAY DIFFRACTION

The reported resolution of this entry is 1.38 Å.

Percentile scores (ranging between 0-100) for global validation metrics of the entry are shown in the following graphic. The table shows the number of entries on which the scores are based.



Metric	Whole archive (#Entries)	Similar resolution (#Entries, resolution range(Å))
R_{free}	100719	2133 (1.40-1.36)
Clashscore	112137	2266 (1.40-1.36)
Ramachandran outliers	110173	2215 (1.40-1.36)
Sidechain outliers	110143	2214 (1.40-1.36)
RSRZ outliers	101464	2141 (1.40-1.36)

The table below summarises the geometric issues observed across the polymeric chains and their fit to the electron density. The red, orange, yellow and green segments on the lower bar indicate the fraction of residues that contain outliers for ≥ 3 , 2, 1 and 0 types of geometric quality criteria. A grey segment represents the fraction of residues that are not modelled. The numeric value for each fraction is indicated below the corresponding segment, with a dot representing fractions $\leq 5\%$. The upper red bar (where present) indicates the fraction of residues that have poor fit to the electron density. The numeric value is given above the bar.

Mol	Chain	Length	Quality of chain
1	A	1045	<div> <div>9%</div> <div>89%</div> <div>8%</div> </div>

The following table lists non-polymeric compounds, carbohydrate monomers and non-standard residues in protein, DNA, RNA chains that are outliers for geometric or electron-density-fit criteria:

Mol	Type	Chain	Res	Chirality	Geometry	Clashes	Electron density
2	NAG	A	1046	X	-	-	-

2 Entry composition

There are 6 unique types of molecules in this entry. The entry contains 9687 atoms, of which 0 are hydrogens and 0 are deuteriums.

In the tables below, the ZeroOcc column contains the number of atoms modelled with zero occupancy, the AltConf column contains the number of residues with at least one atom in alternate conformation and the Trace column contains the number of residues modelled with at most 2 atoms.

- Molecule 1 is a protein called Alpha-mannosidase 2.

Mol	Chain	Residues	Atoms					ZeroOcc	AltConf	Trace
1	A	1016	Total	C	N	O	S	0	20	0
			8347	5301	1468	1538	40			

There are 13 discrepancies between the modelled and reference sequences:

Chain	Residue	Modelled	Actual	Comment	Reference
A	1	ARG	-	EXPRESSION TAG	UNP Q24451
A	2	SER	-	EXPRESSION TAG	UNP Q24451
A	3	SER	-	EXPRESSION TAG	UNP Q24451
A	4	HIS	-	EXPRESSION TAG	UNP Q24451
A	5	HIS	-	EXPRESSION TAG	UNP Q24451
A	6	HIS	-	EXPRESSION TAG	UNP Q24451
A	7	HIS	-	EXPRESSION TAG	UNP Q24451
A	8	HIS	-	EXPRESSION TAG	UNP Q24451
A	9	HIS	-	EXPRESSION TAG	UNP Q24451
A	10	GLY	-	EXPRESSION TAG	UNP Q24451
A	11	GLU	-	EXPRESSION TAG	UNP Q24451
A	12	PHE	-	EXPRESSION TAG	UNP Q24451
A	907	LYS	GLU	SEE REMARK 999	UNP Q24451

- Molecule 2 is SUGAR (N-ACETYL-D-GLUCOSAMINE) (three-letter code: NAG) (formula: $C_8H_{15}NO_6$).

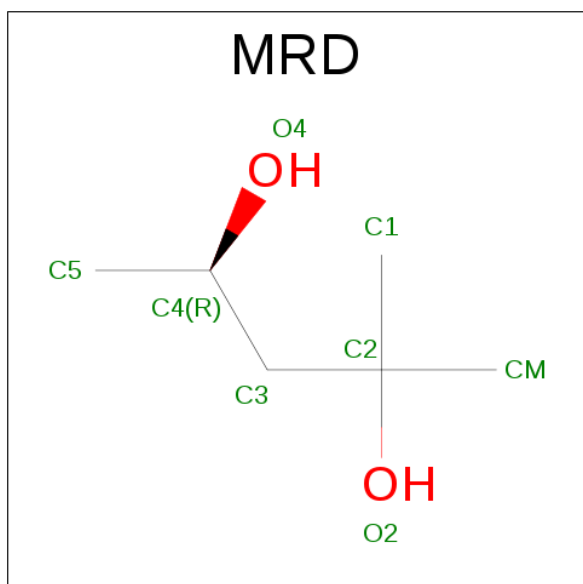


Mol	Chain	Residues	Atoms				ZeroOcc	AltConf
2	A	1	Total	C	N	O	0	0
			14	8	1	5		

- Molecule 3 is ZINC ION (three-letter code: ZN) (formula: Zn).

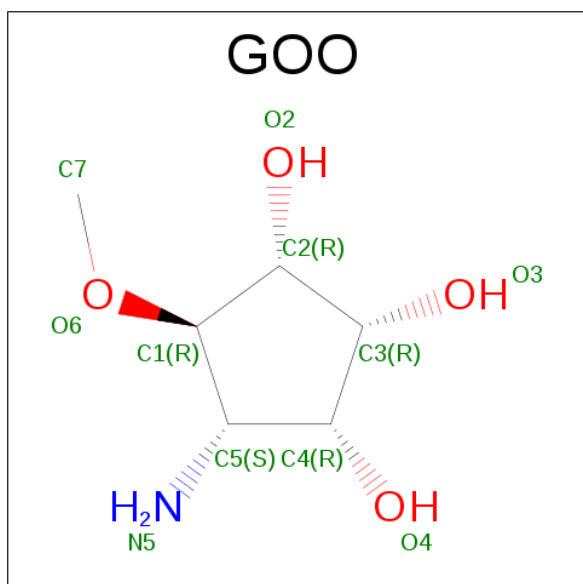
Mol	Chain	Residues	Atoms		ZeroOcc	AltConf
3	A	1	Total	Zn	0	0
			1	1		

- Molecule 4 is (4R)-2-METHYLPENTANE-2,4-DIOL (three-letter code: MRD) (formula: C₆H₁₄O₂).



Mol	Chain	Residues	Atoms			ZeroOcc	AltConf
4	A	1	Total	C	O	0	0
			8	6	2		

- Molecule 5 is (1R,2R,3R,4S,5R)-4-AMINO-5-METHOXYCYCLOPENTANE-1,2,3-TRIOL (three-letter code: GOO) (formula: $C_6H_{13}NO_4$).



Mol	Chain	Residues	Atoms				ZeroOcc	AltConf
5	A	1	Total	C	N	O	0	0
			11	6	1	4		

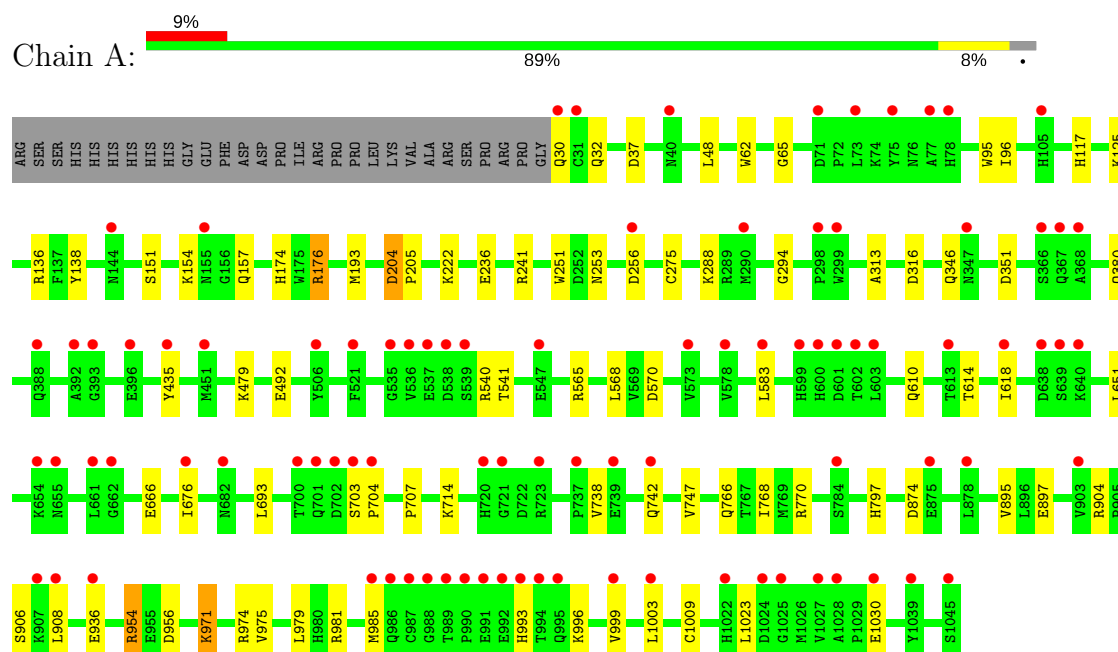
- Molecule 6 is water.

Mol	Chain	Residues	Atoms		ZeroOcc	AltConf
6	A	1304	Total	O	0	2
			1306	1306		

3 Residue-property plots [i](#)

These plots are drawn for all protein, RNA and DNA chains in the entry. The first graphic for a chain summarises the proportions of the various outlier classes displayed in the second graphic. The second graphic shows the sequence view annotated by issues in geometry and electron density. Residues are color-coded according to the number of geometric quality criteria for which they contain at least one outlier: green = 0, yellow = 1, orange = 2 and red = 3 or more. A red dot above a residue indicates a poor fit to the electron density ($RSRZ > 2$). Stretches of 2 or more consecutive residues without any outlier are shown as a green connector. Residues present in the sample, but not in the model, are shown in grey.

• Molecule 1: Alpha-mannosidase 2



4 Data and refinement statistics

Property	Value	Source
Space group	P 21 21 21	Depositor
Cell constants a, b, c, α , β , γ	68.77Å 109.70Å 138.31Å 90.00° 90.00° 90.00°	Depositor
Resolution (Å)	19.50 – 1.38 19.45 – 1.38	Depositor EDS
% Data completeness (in resolution range)	99.5 (19.50-1.38) 99.5 (19.45-1.38)	Depositor EDS
R_{merge}	0.08	Depositor
R_{sym}	(Not available)	Depositor
$\langle I/\sigma(I) \rangle$ ¹	3.38 (at 1.39Å)	Xtriage
Refinement program	REFMAC 5.2.0019	Depositor
R, R_{free}	0.188 , 0.203 0.182 , 0.183	Depositor DCC
R_{free} test set	3186 reflections (1.53%)	DCC
Wilson B-factor (Å ²)	12.9	Xtriage
Anisotropy	0.046	Xtriage
Bulk solvent k_{sol} (e/Å ³), B_{sol} (Å ²)	0.44 , 59.2	EDS
L-test for twinning ²	$\langle L \rangle = 0.50$, $\langle L^2 \rangle = 0.33$	Xtriage
Estimated twinning fraction	No twinning to report.	Xtriage
F_o, F_c correlation	0.96	EDS
Total number of atoms	9687	wwPDB-VP
Average B, all atoms (Å ²)	15.0	wwPDB-VP

Xtriage's analysis on translational NCS is as follows: *The largest off-origin peak in the Patterson function is 3.27% of the height of the origin peak. No significant pseudotranslation is detected.*

¹Intensities estimated from amplitudes.

²Theoretical values of $\langle |L| \rangle$, $\langle L^2 \rangle$ for acentric reflections are 0.5, 0.333 respectively for untwinned datasets, and 0.375, 0.2 for perfectly twinned datasets.

5 Model quality [i](#)

5.1 Standard geometry [i](#)

Bond lengths and bond angles in the following residue types are not validated in this section: MRD, ZN, GOO, NAG

The Z score for a bond length (or angle) is the number of standard deviations the observed value is removed from the expected value. A bond length (or angle) with $|Z| > 5$ is considered an outlier worth inspection. RMSZ is the root-mean-square of all Z scores of the bond lengths (or angles).

Mol	Chain	Bond lengths		Bond angles	
		RMSZ	$\# Z > 5$	RMSZ	$\# Z > 5$
1	A	0.68	0/8600	0.81	7/11675 (0.1%)

There are no bond length outliers.

All (7) bond angle outliers are listed below:

Mol	Chain	Res	Type	Atoms	Z	Observed(°)	Ideal(°)
1	A	954	ARG	NE-CZ-NH2	-6.61	116.99	120.30
1	A	176	ARG	NE-CZ-NH1	-5.87	117.36	120.30
1	A	874	ASP	CB-CG-OD2	-5.59	113.27	118.30
1	A	954	ARG	NE-CZ-NH1	5.55	123.08	120.30
1	A	540	ARG	NE-CZ-NH1	5.49	123.04	120.30
1	A	974	ARG	NE-CZ-NH2	-5.20	117.70	120.30
1	A	565	ARG	NE-CZ-NH2	-5.16	117.72	120.30

There are no chirality outliers.

There are no planarity outliers.

5.2 Too-close contacts [i](#)

In the following table, the Non-H and H(model) columns list the number of non-hydrogen atoms and hydrogen atoms in the chain respectively. The H(added) column lists the number of hydrogen atoms added and optimized by MolProbity. The Clashes column lists the number of clashes within the asymmetric unit, whereas Symm-Clashes lists symmetry related clashes.

Mol	Chain	Non-H	H(model)	H(added)	Clashes	Symm-Clashes
1	A	8347	0	8126	66	0
2	A	14	0	13	0	0
3	A	1	0	0	0	0
4	A	8	0	14	0	0

Continued on next page...

Continued from previous page...

Mol	Chain	Non-H	H(model)	H(added)	Clashes	Symm-Clashes
5	A	11	0	11	0	0
6	A	1306	0	0	28	0
All	All	9687	0	8164	66	0

The all-atom clashscore is defined as the number of clashes found per 1000 atoms (including hydrogen atoms). The all-atom clashscore for this structure is 4.

All (66) close contacts within the same asymmetric unit are listed below, sorted by their clash magnitude.

Atom-1	Atom-2	Interatomic distance (Å)	Clash overlap (Å)
1:A:136:ARG:HD3	6:A:1427:HOH:O	1.66	0.96
1:A:380:GLN:HG2	6:A:1110:HOH:O	1.73	0.87
1:A:971:LYS:NZ	1:A:971:LYS:HB2	1.97	0.77
1:A:971:LYS:HZ3	1:A:971:LYS:HB2	1.51	0.76
1:A:975:VAL:HG21	1:A:1003[B]:LEU:CD2	2.16	0.75
1:A:666:GLU:HG3	6:A:1898:HOH:O	1.87	0.73
1:A:742:GLN:HG3	6:A:1924:HOH:O	1.90	0.72
1:A:541:THR:HG23	6:A:1664:HOH:O	1.88	0.72
1:A:435:TYR:CE2	6:A:1561:HOH:O	2.43	0.70
1:A:241[B]:ARG:CZ	6:A:2019:HOH:O	2.42	0.67
1:A:693:LEU:HD13	6:A:1917:HOH:O	1.96	0.66
1:A:435:TYR:CZ	6:A:1561:HOH:O	2.50	0.65
1:A:610:GLN:HG3	6:A:1884:HOH:O	1.97	0.65
1:A:979:LEU:HD21	1:A:999:VAL:HG11	1.78	0.64
1:A:975:VAL:HG21	1:A:1003[B]:LEU:HD22	1.81	0.60
1:A:904:ARG:HG2	1:A:985:MET:SD	2.42	0.59
1:A:256:ASP:HB2	6:A:2288:HOH:O	2.02	0.59
1:A:37:ASP:O	1:A:253[A]:ASN:ND2	2.34	0.59
1:A:906:SER:HB3	6:A:1057:HOH:O	2.04	0.57
1:A:666:GLU:CG	6:A:1898:HOH:O	2.49	0.57
1:A:62:TRP:CD2	1:A:65:GLY:HA3	2.41	0.56
1:A:714:LYS:HE3	1:A:738:VAL:HG22	1.89	0.55
1:A:707:PRO:HG2	1:A:797[A]:HIS:CE1	2.42	0.54
1:A:975:VAL:HG21	1:A:1003[B]:LEU:HD21	1.88	0.54
1:A:138:TYR:CE1	1:A:193:MET:HE1	2.43	0.53
1:A:138:TYR:CE1	1:A:193:MET:CE	2.92	0.53
1:A:936:GLU:HG2	6:A:1519:HOH:O	2.09	0.53
1:A:954:ARG:HD2	1:A:956:ASP:OD1	2.10	0.52
1:A:222:LYS:HD2	6:A:2058:HOH:O	2.08	0.52
1:A:174:HIS:CE1	1:A:176:ARG:HD3	2.43	0.52
1:A:37:ASP:HB2	1:A:253[A]:ASN:ND2	2.25	0.52

Continued on next page...

Continued from previous page...

Atom-1	Atom-2	Interatomic distance (Å)	Clash overlap (Å)
1:A:294:GLY:HA2	6:A:1165:HOH:O	2.10	0.50
1:A:895:VAL:HG12	1:A:897:GLU:HG3	1.93	0.50
1:A:380:GLN:CG	6:A:1110:HOH:O	2.47	0.49
1:A:703:SER:HB2	1:A:704:PRO:CD	2.43	0.49
1:A:975:VAL:HG21	1:A:1003[A]:LEU:CD1	2.43	0.49
1:A:993:HIS:ND1	1:A:993:HIS:O	2.46	0.49
1:A:766[A]:GLN:HG3	6:A:1859:HOH:O	2.12	0.49
1:A:151[A]:SER:OG	6:A:1247:HOH:O	2.20	0.48
1:A:48:LEU:HD11	1:A:236:GLU:HG2	1.97	0.46
1:A:32:GLN:NE2	6:A:2288:HOH:O	2.47	0.46
1:A:954:ARG:CZ	1:A:954:ARG:HB3	2.44	0.46
1:A:154:LYS:HE3	6:A:1237:HOH:O	2.15	0.46
1:A:568:LEU:HD12	1:A:770:ARG:HD3	1.98	0.45
1:A:614:THR:HB	6:A:1676:HOH:O	2.17	0.45
1:A:1009:CYS:SG	1:A:1023:LEU:HD12	2.57	0.44
1:A:956:ASP:OD2	1:A:981:ARG:HD3	2.17	0.44
1:A:251:TRP:CD1	1:A:251:TRP:C	2.90	0.44
1:A:96:ILE:HD12	1:A:479:LYS:HE2	1.99	0.43
1:A:288:LYS:NZ	6:A:1202:HOH:O	2.51	0.43
1:A:125:LYS:HD3	1:A:157:GLN:HA	2.01	0.43
1:A:954:ARG:NH2	1:A:1030:GLU:OE1	2.44	0.42
1:A:583:LEU:HD12	1:A:583:LEU:HA	1.88	0.42
1:A:676:ILE:HD13	1:A:747:VAL:HG21	2.02	0.42
1:A:492:GLU:HG3	6:A:1547:HOH:O	2.20	0.42
1:A:908:LEU:HD12	1:A:908:LEU:N	2.33	0.42
1:A:936:GLU:HG3	6:A:2244:HOH:O	2.19	0.42
1:A:996[B]:LYS:NZ	6:A:1615:HOH:O	2.52	0.41
1:A:117[B]:HIS:HE1	1:A:351:ASP:OD1	2.04	0.41
1:A:313:ALA:O	1:A:316[B]:ASP:HB2	2.21	0.41
1:A:204:ASP:H	1:A:205:PRO:HD3	1.86	0.41
1:A:703:SER:HB2	1:A:704:PRO:HD2	2.02	0.41
1:A:346:GLN:NE2	6:A:1203:HOH:O	2.53	0.40
1:A:766[B]:GLN:HG2	1:A:768:ILE:HG13	2.02	0.40
1:A:570[A]:ASP:HA	1:A:618:ILE:O	2.22	0.40
1:A:136:ARG:CD	6:A:1427:HOH:O	2.45	0.40

There are no symmetry-related clashes.

5.3 Torsion angles [i](#)

5.3.1 Protein backbone [i](#)

In the following table, the Percentiles column shows the percent Ramachandran outliers of the chain as a percentile score with respect to all X-ray entries followed by that with respect to entries of similar resolution.

The Analysed column shows the number of residues for which the backbone conformation was analysed, and the total number of residues.

Mol	Chain	Analysed	Favoured	Allowed	Outliers	Percentiles	
1	A	1034/1045 (99%)	1010 (98%)	22 (2%)	2 (0%)	51	21

All (2) Ramachandran outliers are listed below:

Mol	Chain	Res	Type
1	A	95	TRP
1	A	204	ASP

5.3.2 Protein sidechains [i](#)

In the following table, the Percentiles column shows the percent sidechain outliers of the chain as a percentile score with respect to all X-ray entries followed by that with respect to entries of similar resolution.

The Analysed column shows the number of residues for which the sidechain conformation was analysed, and the total number of residues.

Mol	Chain	Analysed	Rotameric	Outliers	Percentiles	
1	A	923/929 (99%)	919 (100%)	4 (0%)	93	81

All (4) residues with a non-rotameric sidechain are listed below:

Mol	Chain	Res	Type
1	A	30	GLN
1	A	275	CYS
1	A	651	LEU
1	A	971	LYS

Some sidechains can be flipped to improve hydrogen bonding and reduce clashes. There are no such sidechains identified.

5.3.3 RNA ⓘ

There are no RNA molecules in this entry.

5.4 Non-standard residues in protein, DNA, RNA chains ⓘ

There are no non-standard protein/DNA/RNA residues in this entry.

5.5 Carbohydrates ⓘ

There are no carbohydrates in this entry.

5.6 Ligand geometry ⓘ

Of 4 ligands modelled in this entry, 1 is monoatomic - leaving 3 for Mogul analysis.

In the following table, the Counts columns list the number of bonds (or angles) for which Mogul statistics could be retrieved, the number of bonds (or angles) that are observed in the model and the number of bonds (or angles) that are defined in the chemical component dictionary. The Link column lists molecule types, if any, to which the group is linked. The Z score for a bond length (or angle) is the number of standard deviations the observed value is removed from the expected value. A bond length (or angle) with $|Z| > 2$ is considered an outlier worth inspection. RMSZ is the root-mean-square of all Z scores of the bond lengths (or angles).

Mol	Type	Chain	Res	Link	Bond lengths			Bond angles		
					Counts	RMSZ	# $ Z > 2$	Counts	RMSZ	# $ Z > 2$
2	NAG	A	1046	1	14,14,15	0.50	0	15,19,21	2.35	4 (26%)
4	MRD	A	1048	-	7,7,7	0.40	0	9,10,10	0.85	0
5	GOO	A	1049	3	11,11,11	0.82	0	13,16,16	1.31	1 (7%)

In the following table, the Chirals column lists the number of chiral outliers, the number of chiral centers analysed, the number of these observed in the model and the number defined in the chemical component dictionary. Similar counts are reported in the Torsion and Rings columns. '-' means no outliers of that kind were identified.

Mol	Type	Chain	Res	Link	Chirals	Torsions	Rings
2	NAG	A	1046	1	1/1/5/7	0/6/23/26	0/1/1/1
4	MRD	A	1048	-	-	0/5/5/5	0/0/0/0
5	GOO	A	1049	3	-	0/2/22/22	0/1/1/1

There are no bond length outliers.

All (5) bond angle outliers are listed below:

Mol	Chain	Res	Type	Atoms	Z	Observed($^{\circ}$)	Ideal($^{\circ}$)
2	A	1046	NAG	C1-C2-N2	-4.41	102.95	110.49
5	A	1049	GOO	O6-C1-C5	-3.39	104.44	112.36
2	A	1046	NAG	C1-O5-C5	2.33	115.38	112.17
2	A	1046	NAG	C2-N2-C7	2.66	126.82	122.94
2	A	1046	NAG	O5-C1-C2	6.15	120.03	111.47

All (1) chirality outliers are listed below:

Mol	Chain	Res	Type	Atom
2	A	1046	NAG	C1

There are no torsion outliers.

There are no ring outliers.

No monomer is involved in short contacts.

5.7 Other polymers [i](#)

There are no such residues in this entry.

5.8 Polymer linkage issues [i](#)

There are no chain breaks in this entry.

6 Fit of model and data ⓘ

6.1 Protein, DNA and RNA chains ⓘ

In the following table, the column labelled ‘#RSRZ > 2’ contains the number (and percentage) of RSRZ outliers, followed by percent RSRZ outliers for the chain as percentile scores relative to all X-ray entries and entries of similar resolution. The OWAB column contains the minimum, median, 95th percentile and maximum values of the occupancy-weighted average B-factor per residue. The column labelled ‘Q < 0.9’ lists the number of (and percentage) of residues with an average occupancy less than 0.9.

Mol	Chain	Analysed	<RSRZ>	#RSRZ>2	OWAB(Å ²)	Q<0.9
1	A	1016/1045 (97%)	0.60	91 (8%) 10 12	6, 13, 26, 46	3 (0%)

All (91) RSRZ outliers are listed below:

Mol	Chain	Res	Type	RSRZ
1	A	993	HIS	9.1
1	A	991	GLU	8.8
1	A	702	ASP	7.7
1	A	638	ASP	7.6
1	A	30	GLN	7.5
1	A	720	HIS	7.5
1	A	78	HIS	6.9
1	A	603	LEU	6.8
1	A	1045	SER	6.7
1	A	703	SER	6.6
1	A	989	THR	6.5
1	A	701	GLN	6.1
1	A	721	GLY	5.8
1	A	994	THR	5.7
1	A	538	ASP	5.3
1	A	990	PRO	5.3
1	A	1024	ASP	5.2
1	A	784	SER	5.1
1	A	903	VAL	4.6
1	A	992	GLU	4.5
1	A	77	ALA	4.5
1	A	547	GLU	4.4
1	A	907	LYS	4.2
1	A	600	HIS	4.2
1	A	144	ASN	4.2
1	A	655	ASN	4.2
1	A	602	THR	4.2

Continued on next page...

Continued from previous page...

Mol	Chain	Res	Type	RSRZ
1	A	682	ASN	4.1
1	A	639	SER	4.1
1	A	583	LEU	4.0
1	A	654	LYS	4.0
1	A	392	ALA	3.9
1	A	31	CYS	3.8
1	A	521	PHE	3.6
1	A	737	PRO	3.6
1	A	396	GLU	3.5
1	A	1027	VAL	3.4
1	A	908	LEU	3.4
1	A	995[A]	GLN	3.3
1	A	1022	HIS	3.2
1	A	451	MET	3.2
1	A	700	THR	3.1
1	A	75	TYR	3.1
1	A	676	ILE	3.1
1	A	662	GLY	3.1
1	A	640	LYS	3.1
1	A	1028	ALA	3.0
1	A	347	ASN	3.0
1	A	578	VAL	3.0
1	A	366	SER	2.9
1	A	290	MET	2.9
1	A	985	MET	2.9
1	A	988	GLY	2.8
1	A	987	CYS	2.8
1	A	368	ALA	2.8
1	A	723	ARG	2.8
1	A	618	ILE	2.7
1	A	435	TYR	2.7
1	A	539	SER	2.6
1	A	40	ASN	2.6
1	A	599	HIS	2.6
1	A	742	GLN	2.5
1	A	298	PRO	2.5
1	A	661	LEU	2.5
1	A	613	THR	2.5
1	A	986	GLN	2.5
1	A	73	LEU	2.5
1	A	535	GLY	2.5
1	A	537[A]	GLU	2.5

Continued on next page...

Continued from previous page...

Mol	Chain	Res	Type	RSRZ
1	A	573	VAL	2.4
1	A	155	ASN	2.4
1	A	536	VAL	2.4
1	A	739	GLU	2.3
1	A	936	GLU	2.3
1	A	388	GLN	2.3
1	A	1003[A]	LEU	2.2
1	A	71	ASP	2.2
1	A	367	GLN	2.2
1	A	704	PRO	2.2
1	A	1030	GLU	2.2
1	A	393	GLY	2.1
1	A	1039	TYR	2.1
1	A	875	GLU	2.1
1	A	1025	GLY	2.1
1	A	105	HIS	2.1
1	A	256	ASP	2.0
1	A	999	VAL	2.0
1	A	299	TRP	2.0
1	A	506	TYR	2.0
1	A	601	ASP	2.0
1	A	878	LEU	2.0

6.2 Non-standard residues in protein, DNA, RNA chains [i](#)

There are no non-standard protein/DNA/RNA residues in this entry.

6.3 Carbohydrates [i](#)

There are no carbohydrates in this entry.

6.4 Ligands [i](#)

In the following table, the Atoms column lists the number of modelled atoms in the group and the number defined in the chemical component dictionary. LLDF column lists the quality of electron density of the group with respect to its neighbouring residues in protein, DNA or RNA chains. The B-factors column lists the minimum, median, 95th percentile and maximum values of B factors of atoms in the group. The column labelled 'Q < 0.9' lists the number of atoms with occupancy less than 0.9.

Mol	Type	Chain	Res	Atoms	RSCC	RSR	LLDF	B-factors(\AA^2)	Q<0.9
5	GOO	A	1049	11/11	0.96	0.08	0.94	7,7,9,10	0
4	MRD	A	1048	8/8	0.93	0.08	-0.64	15,18,20,20	0
3	ZN	A	1047	1/1	1.00	0.03	-3.96	7,7,7,7	0
2	NAG	A	1046	14/15	0.53	0.30	-	61,62,62,63	0

6.5 Other polymers [i](#)

There are no such residues in this entry.