



wwPDB X-ray Structure Validation Summary Report ⓘ

Feb 14, 2017 – 04:22 pm GMT

PDB ID : 1DZN
Title : ASP170SER MUTANT OF VANILLYL-ALCOHOL OXIDASE
Authors : Van Den Heuvel, R.H.H.; Fraaije, M.W.; Van Berkel, W.J.H.; Mattevi, A.
Deposited on : 2000-03-05
Resolution : 2.80 Å(reported)

This is a wwPDB X-ray Structure Validation Summary Report for a publicly released PDB entry.

We welcome your comments at validation@mail.wwpdb.org

A user guide is available at

<http://wwpdb.org/validation/2016/XrayValidationReportHelp>

with specific help available everywhere you see the ⓘ symbol.

The following versions of software and data (see [references ⓘ](#)) were used in the production of this report:

MolProbity	:	4.02b-467
Mogul	:	1.7.2 (RC1), CSD as538be (2017)
Xtriage (Phenix)	:	1.9-1692
EDS	:	trunk28620
Percentile statistics	:	20161228.v01 (using entries in the PDB archive December 28th 2016)
Refmac	:	5.8.0135
CCP4	:	6.5.0
Ideal geometry (proteins)	:	Engh & Huber (2001)
Ideal geometry (DNA, RNA)	:	Parkinson et al. (1996)
Validation Pipeline (wwPDB-VP)	:	recalc28949

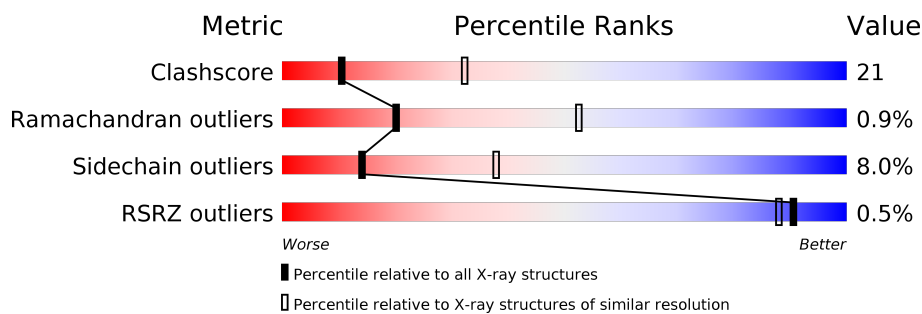
1 Overall quality at a glance

The following experimental techniques were used to determine the structure:

X-RAY DIFFRACTION



The reported resolution of this entry is 2.80 Å.

Percentile scores (ranging between 0-100) for global validation metrics of the entry are shown in the following graphic. The table shows the number of entries on which the scores are based.



Metric	Whole archive (#Entries)	Similar resolution (#Entries, resolution range(Å))
Clashscore	112137	3033 (2.80-2.80)
Ramachandran outliers	110173	2983 (2.80-2.80)
Sidechain outliers	110143	2985 (2.80-2.80)
RSRZ outliers	101464	2610 (2.80-2.80)

The table below summarises the geometric issues observed across the polymeric chains and their fit to the electron density. The red, orange, yellow and green segments on the lower bar indicate the fraction of residues that contain outliers for ≥ 3 , 2, 1 and 0 types of geometric quality criteria. A grey segment represents the fraction of residues that are not modelled. The numeric value for each fraction is indicated below the corresponding segment, with a dot representing fractions $\leq 5\%$. The upper red bar (where present) indicates the fraction of residues that have poor fit to the electron density. The numeric value is given above the bar.

Mol	Chain	Length	Quality of chain
1	A	560	 57% 34% 6% ...
1	B	560	 54% 35% 7% ...

The following table lists non-polymeric compounds, carbohydrate monomers and non-standard residues in protein, DNA, RNA chains that are outliers for geometric or electron-density-fit criteria:

Mol	Type	Chain	Res	Chirality	Geometry	Clashes	Electron density
2	FAD	A	600	-	-	-	X
3	EUG	A	601	-	-	-	X

2 Entry composition [i](#)

There are 4 unique types of molecules in this entry. The entry contains 8821 atoms, of which 0 are hydrogens and 0 are deuteriums.

In the tables below, the ZeroOcc column contains the number of atoms modelled with zero occupancy, the AltConf column contains the number of residues with at least one atom in alternate conformation and the Trace column contains the number of residues modelled with at most 2 atoms.

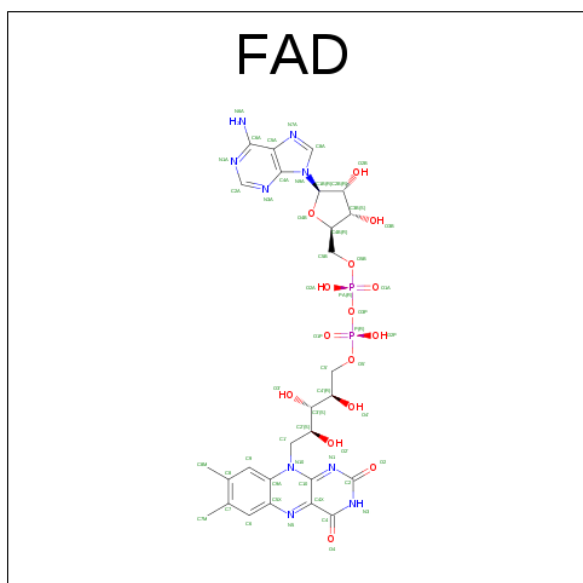
- Molecule 1 is a protein called VANILLYL-ALCOHOL OXIDASE.

Mol	Chain	Residues	Atoms					ZeroOcc	AltConf	Trace
1	A	550	Total	C	N	O	S	0	0	0
			4315	2774	731	787	23			
1	B	550	Total	C	N	O	S	0	0	0
			4316	2775	731	787	23			

There are 5 discrepancies between the modelled and reference sequences:

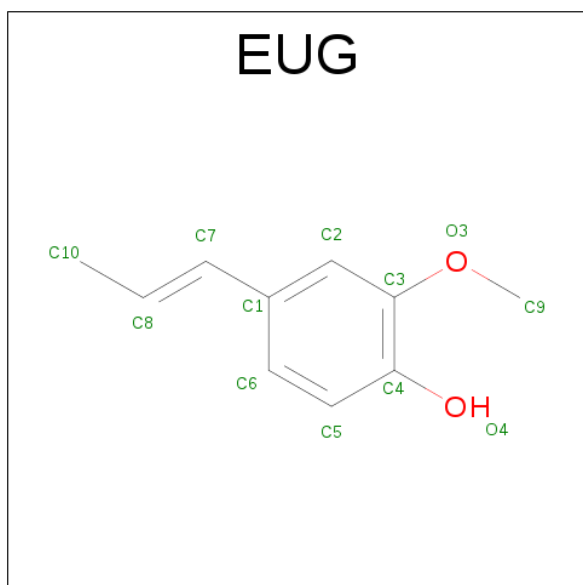
Chain	Residue	Modelled	Actual	Comment	Reference
A	6	ALA	GLU	CONFLICT	UNP P56216
B	6	ALA	GLU	CONFLICT	UNP P56216
A	274	GLY	ARG	CONFLICT	UNP P56216
B	274	GLY	ARG	CONFLICT	UNP P56216
B	170	SER	ASP	ENGINEERED	UNP P56216

- Molecule 2 is FLAVIN-ADENINE DINUCLEOTIDE (three-letter code: FAD) (formula: $C_{27}H_{33}N_9O_{15}P_2$).



Mol	Chain	Residues	Atoms					ZeroOcc	AltConf
2	A	1	Total	C	N	O	P	0	0
			53	27	9	15	2		
2	B	1	Total	C	N	O	P	0	0
			53	27	9	15	2		

- Molecule 3 is 2-METHOXY-4-VINYL-PHENOL (three-letter code: EUG) (formula: $C_{10}H_{12}O_2$).



Mol	Chain	Residues	Atoms			ZeroOcc	AltConf
3	A	1	Total	C	O	0	0
			11	9	2		
3	B	1	Total	C	O	0	0
			11	9	2		

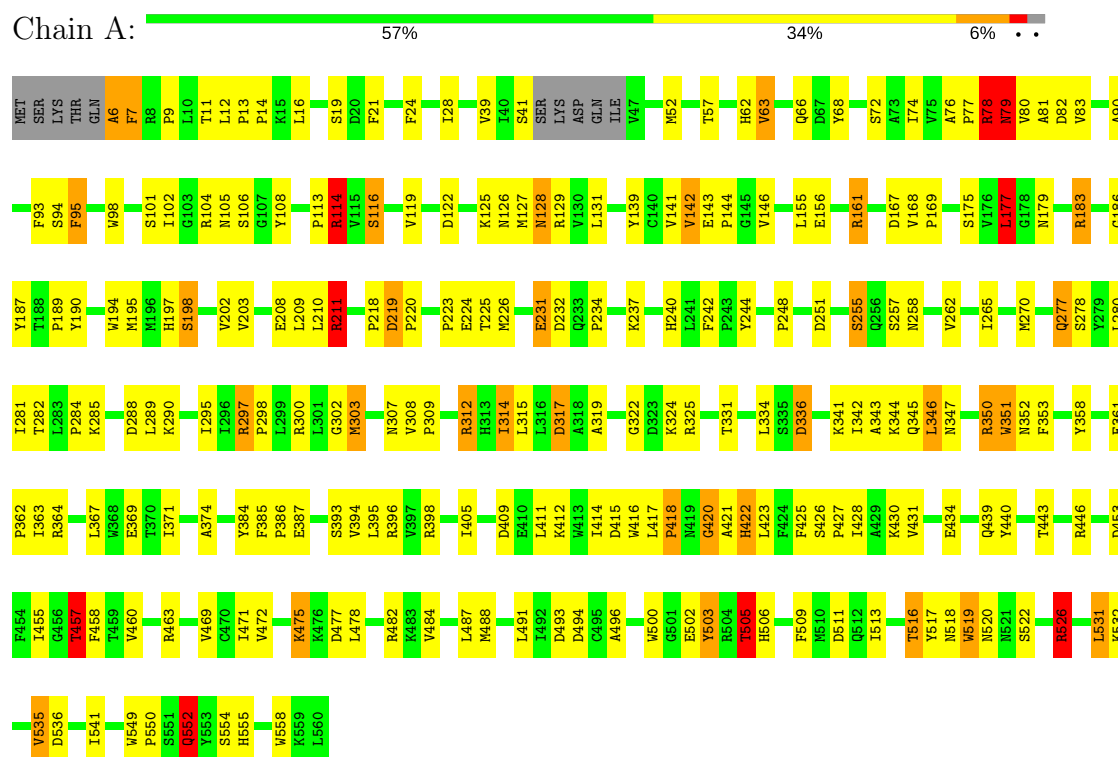
- Molecule 4 is water.

Mol	Chain	Residues	Atoms		ZeroOcc	AltConf
4	A	30	Total	O	0	0
			30	30		
4	B	32	Total	O	0	0
			32	32		

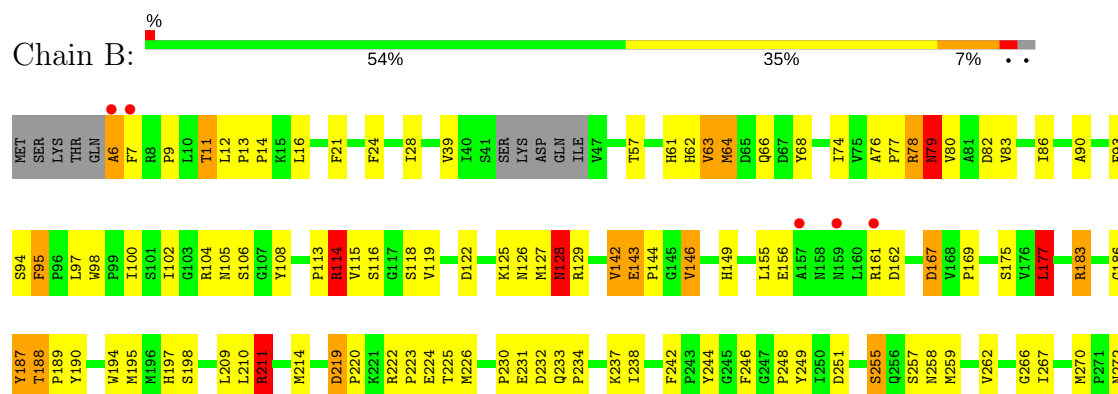
3 Residue-property plots

These plots are drawn for all protein, RNA and DNA chains in the entry. The first graphic for a chain summarises the proportions of the various outlier classes displayed in the second graphic. The second graphic shows the sequence view annotated by issues in geometry and electron density. Residues are color-coded according to the number of geometric quality criteria for which they contain at least one outlier: green = 0, yellow = 1, orange = 2 and red = 3 or more. A red dot above a residue indicates a poor fit to the electron density ($RSRZ > 2$). Stretches of 2 or more consecutive residues without any outlier are shown as a green connector. Residues present in the sample, but not in the model, are shown in grey.

• Molecule 1: VANILLYL-ALCOHOL OXIDASE



• Molecule 1: VANILLYL-ALCOHOL OXIDASE



P273	L357	T487	V530
S278	Y358	V460	L531
Y279	E361	R463	V535
L280	P362	H467	D536
I281	I363	I468	K545
T282	R364	V469	W549
L283	L367	C470	P550
P284	W368	I471	S551
K285	I371	V472	Q552
D288	K372	F473	Y553
L289	D373	N474	S554
K290	A374	K475	H555
L295	Y384	K476	W558
I296	F385	D477	K559
R297	P386	L478	L560
P298	S393	R482	
L299	V394	K483	
R300	L395	V484	
L301	R396	L487	
L305	Y397	M488	
Q306	R398	R489	
I307	P399	T490	
Y308	K400	L491	
T310	T401	I492	
I311	Y408	D493	
R312	L411	D494	
R313	K412	C495	
I314	L414	A496	
L315	W413	M500	
L316	D415	Q501	
D317	W416	E502	
K324	L417	Y503	
R325	P418	R504	
T331	T419	T505	
L334	Q420	H506	
S335	A421	L507	
D336	R422	M508	
K341	L423	F509	
I342	F424	W510	
A343	F425	D511	
K344	S426	Q512	
Q345	P427	I513	
L346	I428	W514	
N347	A429	E515	
L348	K430	T516	
V431	V431	Y517	
Q439	Q439	N518	
R350	W351	W519	
N352	T443	L525	
F353	R446	R526	
Y354		E529	

4 Data and refinement statistics

Property	Value	Source
Space group	I 4	Depositor
Cell constants a, b, c, α , β , γ	131.33Å 131.33Å 134.66Å 90.00° 90.00° 90.00°	Depositor
Resolution (Å)	20.00 – 2.80 31.65 – 2.80	Depositor EDS
% Data completeness (in resolution range)	83.7 (20.00-2.80) 82.9 (31.65-2.80)	Depositor EDS
R_{merge}	0.13	Depositor
R_{sym}	0.13	Depositor
$\langle I/\sigma(I) \rangle$ ¹	2.09 (at 2.81Å)	Xtriage
Refinement program	REFMAC	Depositor
R, R_{free}	0.227 , 0.291 0.222 , (Not available)	Depositor DCC
R_{free} test set	No test flags present.	DCC
Wilson B-factor (Å ²)	37.2	Xtriage
Anisotropy	0.151	Xtriage
Bulk solvent k_{sol} (e/Å ³), B_{sol} (Å ²)	0.29 , 49.1	EDS
L-test for twinning ²	$\langle L \rangle = 0.47$, $\langle L^2 \rangle = 0.29$	Xtriage
Estimated twinning fraction	0.025 for l,-k,h 0.038 for -l,-k,-h 0.031 for -h,-l,-k 0.024 for -h,l,k 0.056 for -h,k,-l	Xtriage
F_o, F_c correlation	0.88	EDS
Total number of atoms	8821	wwPDB-VP
Average B, all atoms (Å ²)	31.0	wwPDB-VP

Xtriage's analysis on translational NCS is as follows: *The largest off-origin peak in the Patterson function is 3.73% of the height of the origin peak. No significant pseudotranslation is detected.*

¹Intensities estimated from amplitudes.

²Theoretical values of $\langle |L| \rangle$, $\langle L^2 \rangle$ for acentric reflections are 0.5, 0.333 respectively for untwinned datasets, and 0.375, 0.2 for perfectly twinned datasets.

5 Model quality [i](#)

5.1 Standard geometry [i](#)

Bond lengths and bond angles in the following residue types are not validated in this section: EUG, FAD

The Z score for a bond length (or angle) is the number of standard deviations the observed value is removed from the expected value. A bond length (or angle) with $|Z| > 5$ is considered an outlier worth inspection. RMSZ is the root-mean-square of all Z scores of the bond lengths (or angles).

Mol	Chain	Bond lengths		Bond angles	
		RMSZ	# Z >5	RMSZ	# Z >5
1	A	0.66	0/4434	1.87	94/6032 (1.6%)
1	B	0.67	0/4435	1.85	83/6034 (1.4%)
All	All	0.67	0/8869	1.86	177/12066 (1.5%)

There are no bond length outliers.

The worst 5 of 177 bond angle outliers are listed below:

Mol	Chain	Res	Type	Atoms	Z	Observed(°)	Ideal(°)
1	A	398	ARG	CD-NE-CZ	38.37	177.31	123.60
1	B	398	ARG	CD-NE-CZ	31.00	167.00	123.60
1	B	211	ARG	CD-NE-CZ	19.93	151.50	123.60
1	A	211	ARG	CD-NE-CZ	19.68	151.16	123.60
1	B	446	ARG	NE-CZ-NH1	19.28	129.94	120.30

There are no chirality outliers.

There are no planarity outliers.

5.2 Too-close contacts [i](#)

In the following table, the Non-H and H(model) columns list the number of non-hydrogen atoms and hydrogen atoms in the chain respectively. The H(added) column lists the number of hydrogen atoms added and optimized by MolProbity. The Clashes column lists the number of clashes within the asymmetric unit, whereas Symm-Clashes lists symmetry related clashes.

Mol	Chain	Non-H	H(model)	H(added)	Clashes	Symm-Clashes
1	A	4315	0	4223	175	0
1	B	4316	0	4227	181	0
2	A	53	0	30	9	0
2	B	53	0	30	8	0

Continued on next page...

Continued from previous page...

Mol	Chain	Non-H	H(model)	H(added)	Clashes	Symm-Clashes
3	A	11	0	7	0	0
3	B	11	0	7	2	0
4	A	30	0	0	3	0
4	B	32	0	0	2	0
All	All	8821	0	8524	356	0

The all-atom clashscore is defined as the number of clashes found per 1000 atoms (including hydrogen atoms). The all-atom clashscore for this structure is 21.

The worst 5 of 356 close contacts within the same asymmetric unit are listed below, sorted by their clash magnitude.

Atom-1	Atom-2	Interatomic distance (Å)	Clash overlap (Å)
2:B:600:FAD:H8A	2:B:600:FAD:C5B	1.74	1.16
2:A:600:FAD:H8A	2:A:600:FAD:H51A	1.17	1.15
2:A:600:FAD:H8A	2:A:600:FAD:C5B	1.85	1.06
2:B:600:FAD:H51A	2:B:600:FAD:H8A	1.08	1.05
2:B:600:FAD:H51A	2:B:600:FAD:C8A	1.99	0.93

There are no symmetry-related clashes.

5.3 Torsion angles

5.3.1 Protein backbone

In the following table, the Percentiles column shows the percent Ramachandran outliers of the chain as a percentile score with respect to all X-ray entries followed by that with respect to entries of similar resolution.

The Analysed column shows the number of residues for which the backbone conformation was analysed, and the total number of residues.

Mol	Chain	Analysed	Favoured	Allowed	Outliers	Percentiles	
1	A	546/560 (98%)	496 (91%)	44 (8%)	6 (1%)	17	47
1	B	546/560 (98%)	491 (90%)	51 (9%)	4 (1%)	25	59
All	All	1092/1120 (98%)	987 (90%)	95 (9%)	10 (1%)	20	52

5 of 10 Ramachandran outliers are listed below:

Mol	Chain	Res	Type
1	A	420	GLY
1	B	420	GLY
1	B	105	ASN
1	A	198	SER
1	A	519	TRP

5.3.2 Protein sidechains ⓘ

In the following table, the Percentiles column shows the percent sidechain outliers of the chain as a percentile score with respect to all X-ray entries followed by that with respect to entries of similar resolution.

The Analysed column shows the number of residues for which the sidechain conformation was analysed, and the total number of residues.

Mol	Chain	Analysed	Rotameric	Outliers	Percentiles	
1	A	463/480 (96%)	430 (93%)	33 (7%)	17	44
1	B	463/480 (96%)	422 (91%)	41 (9%)	11	32
All	All	926/960 (96%)	852 (92%)	74 (8%)	14	38

5 of 74 residues with a non-rotameric sidechain are listed below:

Mol	Chain	Res	Type
1	B	7	PHE
1	B	114	ARG
1	B	503	TYR
1	B	11	THR
1	B	79	ASN

Some sidechains can be flipped to improve hydrogen bonding and reduce clashes. 5 of 22 such sidechains are listed below:

Mol	Chain	Res	Type
1	A	552	GLN
1	B	128	ASN
1	B	552	GLN
1	A	555	HIS
1	B	79	ASN

5.3.3 RNA ⓘ

There are no RNA molecules in this entry.

5.4 Non-standard residues in protein, DNA, RNA chains [i](#)

There are no non-standard protein/DNA/RNA residues in this entry.

5.5 Carbohydrates [i](#)

There are no carbohydrates in this entry.

5.6 Ligand geometry [i](#)

4 ligands are modelled in this entry.

In the following table, the Counts columns list the number of bonds (or angles) for which Mogul statistics could be retrieved, the number of bonds (or angles) that are observed in the model and the number of bonds (or angles) that are defined in the chemical component dictionary. The Link column lists molecule types, if any, to which the group is linked. The Z score for a bond length (or angle) is the number of standard deviations the observed value is removed from the expected value. A bond length (or angle) with $|Z| > 2$ is considered an outlier worth inspection. RMSZ is the root-mean-square of all Z scores of the bond lengths (or angles).

Mol	Type	Chain	Res	Link	Bond lengths			Bond angles		
					Counts	RMSZ	$\# Z > 2$	Counts	RMSZ	$\# Z > 2$
2	FAD	A	600	1	51,58,58	1.67	13 (25%)	54,89,89	2.23	22 (40%)
3	EUG	A	601	-	11,11,12	0.67	0	14,14,15	3.72	6 (42%)
2	FAD	B	600	1	51,58,58	1.61	11 (21%)	54,89,89	2.43	18 (33%)
3	EUG	B	601	-	11,11,12	0.60	0	14,14,15	2.89	7 (50%)

In the following table, the Chirals column lists the number of chiral outliers, the number of chiral centers analysed, the number of these observed in the model and the number defined in the chemical component dictionary. Similar counts are reported in the Torsion and Rings columns. '-' means no outliers of that kind were identified.

Mol	Type	Chain	Res	Link	Chirals	Torsions	Rings
2	FAD	A	600	1	-	0/28/50/50	0/6/6/6
3	EUG	A	601	-	-	0/4/4/5	0/1/1/1
2	FAD	B	600	1	-	0/28/50/50	0/6/6/6
3	EUG	B	601	-	-	0/4/4/5	0/1/1/1

The worst 5 of 24 bond length outliers are listed below:

Mol	Chain	Res	Type	Atoms	Z	Observed(Å)	Ideal(Å)
2	B	600	FAD	PA-O2A	-4.15	1.34	1.55
2	A	600	FAD	PA-O2A	-3.69	1.36	1.55

Continued on next page...

Continued from previous page...

Mol	Chain	Res	Type	Atoms	Z	Observed(Å)	Ideal(Å)
2	B	600	FAD	C2B-C1B	-3.46	1.48	1.53
2	A	600	FAD	P-O2P	-3.22	1.38	1.55
2	A	600	FAD	C2B-C1B	-3.13	1.48	1.53

The worst 5 of 53 bond angle outliers are listed below:

Mol	Chain	Res	Type	Atoms	Z	Observed(°)	Ideal(°)
3	A	601	EUG	O3-C3-C2	-6.96	112.43	124.17
2	A	600	FAD	C4X-C4-N3	-5.97	114.98	123.48
2	B	600	FAD	C4X-C4-N3	-5.87	115.13	123.48
2	B	600	FAD	C6-C5X-N5	-4.76	113.38	118.97
2	B	600	FAD	N3A-C2A-N1A	-4.70	124.77	128.86

There are no chirality outliers.

There are no torsion outliers.

There are no ring outliers.

3 monomers are involved in 19 short contacts:

Mol	Chain	Res	Type	Clashes	Symm-Clashes
2	A	600	FAD	9	0
2	B	600	FAD	8	0
3	B	601	EUG	2	0

5.7 Other polymers [i](#)

There are no such residues in this entry.

5.8 Polymer linkage issues [i](#)

There are no chain breaks in this entry.

6 Fit of model and data [i](#)

6.1 Protein, DNA and RNA chains [i](#)

In the following table, the column labelled ‘#RSRZ> 2’ contains the number (and percentage) of RSRZ outliers, followed by percent RSRZ outliers for the chain as percentile scores relative to all X-ray entries and entries of similar resolution. The OWAB column contains the minimum, median, 95th percentile and maximum values of the occupancy-weighted average B-factor per residue. The column labelled ‘Q< 0.9’ lists the number of (and percentage) of residues with an average occupancy less than 0.9.

Mol	Chain	Analysed	<RSRZ>	#RSRZ>2		OWAB(Å ²)	Q<0.9
1	A	550/560 (98%)	-0.49	0	100 100	16, 28, 53, 77	0
1	B	550/560 (98%)	-0.46	5 (0%)	84 79	16, 28, 54, 77	0
All	All	1100/1120 (98%)	-0.47	5 (0%)	90 88	16, 28, 54, 77	0

All (5) RSRZ outliers are listed below:

Mol	Chain	Res	Type	RSRZ
1	B	159	ASN	3.8
1	B	6	ALA	3.7
1	B	157	ALA	3.0
1	B	161	ARG	3.0
1	B	7	PHE	2.0

6.2 Non-standard residues in protein, DNA, RNA chains [i](#)

There are no non-standard protein/DNA/RNA residues in this entry.

6.3 Carbohydrates [i](#)

There are no carbohydrates in this entry.

6.4 Ligands [i](#)

In the following table, the Atoms column lists the number of modelled atoms in the group and the number defined in the chemical component dictionary. LLDF column lists the quality of electron density of the group with respect to its neighbouring residues in protein, DNA or RNA chains. The B-factors column lists the minimum, median, 95th percentile and maximum values of B factors of atoms in the group. The column labelled ‘Q< 0.9’ lists the number of atoms with occupancy less than 0.9.

Mol	Type	Chain	Res	Atoms	RSCC	RSR	LLDF	B-factors(\AA^2)	Q<0.9
3	EUG	A	601	11/12	0.91	0.32	3.25	34,35,37,37	0
2	FAD	A	600	53/53	0.93	0.25	2.82	47,51,52,52	0
2	FAD	B	600	53/53	0.93	0.21	1.95	47,51,52,52	0
3	EUG	B	601	11/12	0.96	0.20	0.96	34,35,37,38	0

6.5 Other polymers [i](#)

There are no such residues in this entry.