



wwPDB X-ray Structure Validation Summary Report ⓘ

Oct 16, 2017 – 11:02 PM EDT

PDB ID : 3DZM
Title : Crystal structure of a major outer membrane protein from *Thermus thermophilus* HB27
Authors : Brosig, A.; Diederichs, K.
Deposited on : unknown
Resolution : 2.80 Å(reported)

This is a wwPDB X-ray Structure Validation Summary Report for a publicly released PDB entry.

We welcome your comments at validation@mail.wwpdb.org

A user guide is available at

<http://wwpdb.org/validation/2016/XrayValidationReportHelp>

with specific help available everywhere you see the ⓘ symbol.

The following versions of software and data (see [references ⓘ](#)) were used in the production of this report:

MolProbity : 4.02b-467
Mogul : 1.7.2 (RC1), CSD as538be (2017)
Xtriage (Phenix) : 1.9-1692
EDS : rb-20030345
Percentile statistics : 20161228.v01 (using entries in the PDB archive December 28th 2016)
Refmac : 5.8.0135
CCP4 : 6.5.0
Ideal geometry (proteins) : Engh & Huber (2001)
Ideal geometry (DNA, RNA) : Parkinson et al. (1996)
Validation Pipeline (wwPDB-VP) : rb-20030345

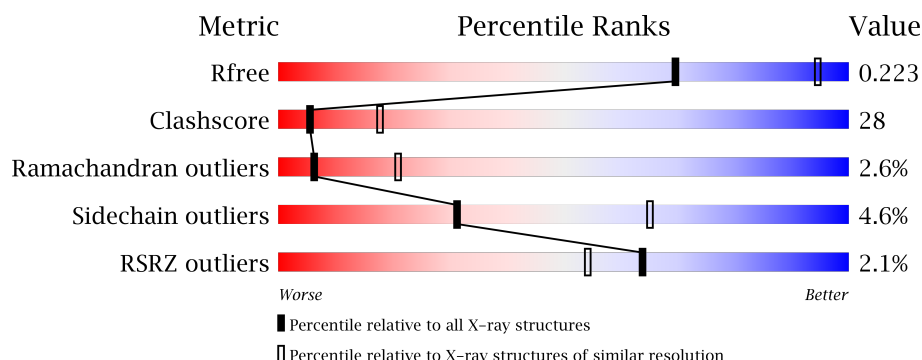
1 Overall quality at a glance ⓘ

The following experimental techniques were used to determine the structure:

X-RAY DIFFRACTION

The reported resolution of this entry is 2.80 Å.

Percentile scores (ranging between 0-100) for global validation metrics of the entry are shown in the following graphic. The table shows the number of entries on which the scores are based.



Metric	Whole archive (#Entries)	Similar resolution (#Entries, resolution range(Å))
R_{free}	100719	2583 (2.80-2.80)
Clashscore	112137	3033 (2.80-2.80)
Ramachandran outliers	110173	2983 (2.80-2.80)
Sidechain outliers	110143	2985 (2.80-2.80)
RSRZ outliers	101464	2610 (2.80-2.80)

The table below summarises the geometric issues observed across the polymeric chains and their fit to the electron density. The red, orange, yellow and green segments on the lower bar indicate the fraction of residues that contain outliers for ≥ 3 , 2, 1 and 0 types of geometric quality criteria. A grey segment represents the fraction of residues that are not modelled. The numeric value for each fraction is indicated below the corresponding segment, with a dot representing fractions $\leq 5\%$. The upper red bar (where present) indicates the fraction of residues that have poor fit to the electron density. The numeric value is given above the bar.

Mol	Chain	Length	Quality of chain
1	A	214	<div> <div>0.1%</div> <div>66%</div> <div>27%</div> <div>0.1%</div> <div>0.1%</div> <div>0.1%</div> </div>
1	B	214	<div> <div>4%</div> <div>64%</div> <div>27%</div> <div>0.1%</div> <div>0.1%</div> <div>5%</div> </div>
1	C	214	<div> <div>0.1%</div> <div>69%</div> <div>22%</div> <div>0.1%</div> <div>0.1%</div> <div>6%</div> </div>

The following table lists non-polymeric compounds, carbohydrate monomers and non-standard residues in protein, DNA, RNA chains that are outliers for geometric or electron-density-fit criteria:

Mol	Type	Chain	Res	Chirality	Geometry	Clashes	Electron density
3	C8E	A	209	-	-	-	X
3	C8E	A	210	-	-	X	X
3	C8E	B	209	-	-	X	X
3	C8E	B	210	-	-	X	X
3	C8E	C	209	-	-	X	X
3	C8E	C	210	-	-	X	X

2 Entry composition

There are 4 unique types of molecules in this entry. The entry contains 4796 atoms, of which 0 are hydrogens and 0 are deuteriums.

In the tables below, the ZeroOcc column contains the number of atoms modelled with zero occupancy, the AltConf column contains the number of residues with at least one atom in alternate conformation and the Trace column contains the number of residues modelled with at most 2 atoms.

- Molecule 1 is a protein called Hypothetical conserved protein.

Mol	Chain	Residues	Atoms					ZeroOcc	AltConf	Trace
1	A	208	Total	C	N	O	S	0	0	0
			1561	999	253	306	3			
1	B	204	Total	C	N	O	S	0	0	0
			1540	987	249	301	3			
1	C	202	Total	C	N	O	S	0	0	0
			1525	978	245	299	3			

There are 24 discrepancies between the modelled and reference sequences:

Chain	Residue	Modelled	Actual	Comment	Reference
A	-5	HIS	-	INSERTION	UNP Q72JD8
A	-4	HIS	-	INSERTION	UNP Q72JD8
A	-3	HIS	-	INSERTION	UNP Q72JD8
A	-2	HIS	-	INSERTION	UNP Q72JD8
A	-1	HIS	-	INSERTION	UNP Q72JD8
A	0	HIS	-	INSERTION	UNP Q72JD8
A	1	ALA	-	INSERTION	UNP Q72JD8
A	2	ALA	-	INSERTION	UNP Q72JD8
B	-5	HIS	-	INSERTION	UNP Q72JD8
B	-4	HIS	-	INSERTION	UNP Q72JD8
B	-3	HIS	-	INSERTION	UNP Q72JD8
B	-2	HIS	-	INSERTION	UNP Q72JD8
B	-1	HIS	-	INSERTION	UNP Q72JD8
B	0	HIS	-	INSERTION	UNP Q72JD8
B	1	ALA	-	INSERTION	UNP Q72JD8
B	2	ALA	-	INSERTION	UNP Q72JD8
C	-5	HIS	-	INSERTION	UNP Q72JD8
C	-4	HIS	-	INSERTION	UNP Q72JD8
C	-3	HIS	-	INSERTION	UNP Q72JD8
C	-2	HIS	-	INSERTION	UNP Q72JD8
C	-1	HIS	-	INSERTION	UNP Q72JD8
C	0	HIS	-	INSERTION	UNP Q72JD8
C	1	ALA	-	INSERTION	UNP Q72JD8

Continued on next page...

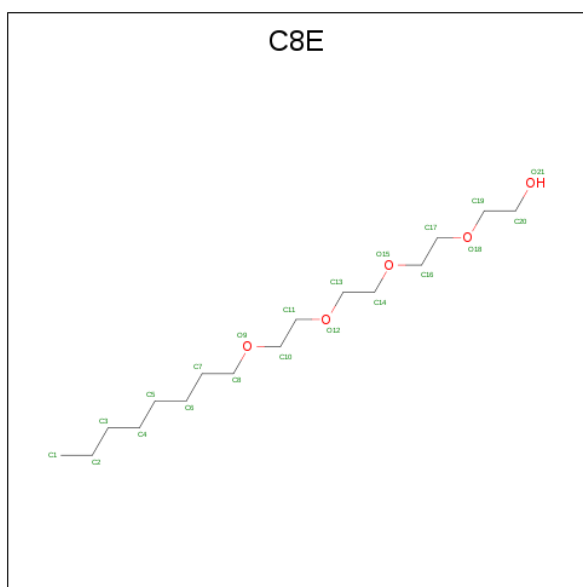
Continued from previous page...

Chain	Residue	Modelled	Actual	Comment	Reference
C	2	ALA	-	INSERTION	UNP Q72JD8

- Molecule 2 is CALCIUM ION (three-letter code: CA) (formula: Ca).

Mol	Chain	Residues	Atoms	ZeroOcc	AltConf
2	B	1	Total Ca 1 1	0	0
2	A	1	Total Ca 1 1	0	0
2	C	1	Total Ca 1 1	0	0

- Molecule 3 is (HYDROXYETHYLOXY)TRI(ETHYLOXY)OCTANE (three-letter code: C8E) (formula: C₁₆H₃₄O₅).



Continued from previous page...

Mol	Chain	Residues	Atoms			ZeroOcc	AltConf
3	C	1	Total	C	O	0	0
			21	16	5		

- Molecule 4 is water.

Mol	Chain	Residues	Atoms		ZeroOcc	AltConf
4	A	11	Total	O	0	0
			11	11		
4	B	15	Total	O	0	0
			15	15		
4	C	15	Total	O	0	0
			15	15		

- Molecule 1: Hypothetical conserved protein



4 Data and refinement statistics

Property	Value	Source
Space group	P 31 2 1	Depositor
Cell constants a, b, c, α , β , γ	166.98 Å 166.98 Å 98.12 Å 90.00° 90.00° 120.00°	Depositor
Resolution (Å)	37.13 – 2.80 37.13 – 2.80	Depositor EDS
% Data completeness (in resolution range)	99.5 (37.13-2.80) 99.5 (37.13-2.80)	Depositor EDS
R_{merge}	0.10	Depositor
R_{sym}	(Not available)	Depositor
$\langle I/\sigma(I) \rangle$ ¹	1.53 (at 2.81 Å)	Xtriage
Refinement program	PHENIX (phenix.refine)	Depositor
R, R_{free}	0.196 , 0.234 0.183 , 0.223	Depositor DCC
R_{free} test set	1944 reflections (5.01%)	DCC
Wilson B-factor (Å ²)	86.5	Xtriage
Anisotropy	0.109	Xtriage
Bulk solvent k_{sol} (e/Å ³), B_{sol} (Å ²)	0.31 , 78.7	EDS
L-test for twinning ²	$\langle L \rangle = 0.49$, $\langle L^2 \rangle = 0.33$	Xtriage
Estimated twinning fraction	0.018 for -h,-k,l	Xtriage
F_o, F_c correlation	0.95	EDS
Total number of atoms	4796	wwPDB-VP
Average B, all atoms (Å ²)	100.0	wwPDB-VP

Xtriage's analysis on translational NCS is as follows: *The largest off-origin peak in the Patterson function is 3.42% of the height of the origin peak. No significant pseudotranslation is detected.*

¹Intensities estimated from amplitudes.

²Theoretical values of $\langle |L| \rangle$, $\langle L^2 \rangle$ for acentric reflections are 0.5, 0.333 respectively for untwinned datasets, and 0.375, 0.2 for perfectly twinned datasets.

5 Model quality

5.1 Standard geometry

Bond lengths and bond angles in the following residue types are not validated in this section: CA, C8E

The Z score for a bond length (or angle) is the number of standard deviations the observed value is removed from the expected value. A bond length (or angle) with $|Z| > 5$ is considered an outlier worth inspection. RMSZ is the root-mean-square of all Z scores of the bond lengths (or angles).

Mol	Chain	Bond lengths		Bond angles	
		RMSZ	$\# Z > 5$	RMSZ	$\# Z > 5$
1	A	0.67	0/1600	0.82	3/2174 (0.1%)
1	B	0.65	0/1578	0.79	0/2144
1	C	0.61	0/1562	0.76	1/2122 (0.0%)
All	All	0.64	0/4740	0.79	4/6440 (0.1%)

Chiral center outliers are detected by calculating the chiral volume of a chiral center and verifying if the center is modelled as a planar moiety or with the opposite hand. A planarity outlier is detected by checking planarity of atoms in a peptide group, atoms in a mainchain group or atoms of a sidechain that are expected to be planar.

Mol	Chain	#Chirality outliers	#Planarity outliers
1	B	0	3

There are no bond length outliers.

All (4) bond angle outliers are listed below:

Mol	Chain	Res	Type	Atoms	Z	Observed(°)	Ideal(°)
1	A	162	ARG	NE-CZ-NH1	6.90	123.75	120.30
1	A	162	ARG	NE-CZ-NH2	-6.48	117.06	120.30
1	C	138	TYR	CA-CB-CG	5.62	124.07	113.40
1	A	101	ARG	NE-CZ-NH2	-5.06	117.77	120.30

There are no chirality outliers.

All (3) planarity outliers are listed below:

Mol	Chain	Res	Type	Group
1	B	114	ASP	Peptide
1	B	116	LEU	Peptide
1	B	117	THR	Peptide

5.2 Too-close contacts

In the following table, the Non-H and H(model) columns list the number of non-hydrogen atoms and hydrogen atoms in the chain respectively. The H(added) column lists the number of hydrogen atoms added and optimized by MolProbity. The Clashes column lists the number of clashes within the asymmetric unit, whereas Symm-Clashes lists symmetry related clashes.

Mol	Chain	Non-H	H(model)	H(added)	Clashes	Symm-Clashes
1	A	1561	0	1486	75	0
1	B	1540	0	1467	99	0
1	C	1525	0	1452	91	0
2	A	1	0	0	0	0
2	B	1	0	0	0	0
2	C	1	0	0	0	0
3	A	42	0	68	15	0
3	B	42	0	68	34	0
3	C	42	0	68	30	0
4	A	11	0	0	1	0
4	B	15	0	0	2	0
4	C	15	0	0	2	0
All	All	4796	0	4609	266	0

The all-atom clashscore is defined as the number of clashes found per 1000 atoms (including hydrogen atoms). The all-atom clashscore for this structure is 28.

The worst 5 of 266 close contacts within the same asymmetric unit are listed below, sorted by their clash magnitude.

Atom-1	Atom-2	Interatomic distance (Å)	Clash overlap (Å)
1:A:113:GLU:HG3	1:A:114:ASP:HA	1.19	1.12
1:B:118:ILE:HB	1:B:167:ASP:OD1	1.52	1.07
1:A:187:ASN:HD21	3:A:210:C8E:H161	1.15	1.06
1:B:50:GLY:HA3	1:B:58:THR:HB	1.36	1.04
1:B:74:ASN:HD21	3:B:209:C8E:H202	1.23	1.04

There are no symmetry-related clashes.

5.3 Torsion angles

5.3.1 Protein backbone

In the following table, the Percentiles column shows the percent Ramachandran outliers of the chain as a percentile score with respect to all X-ray entries followed by that with respect to entries of similar resolution.

The Analysed column shows the number of residues for which the backbone conformation was analysed, and the total number of residues.

Mol	Chain	Analysed	Favoured	Allowed	Outliers	Percentiles	
1	A	206/214 (96%)	187 (91%)	11 (5%)	8 (4%)	3	12
1	B	200/214 (94%)	188 (94%)	9 (4%)	3 (2%)	12	37
1	C	198/214 (92%)	179 (90%)	14 (7%)	5 (2%)	6	22
All	All	604/642 (94%)	554 (92%)	34 (6%)	16 (3%)	6	21

5 of 16 Ramachandran outliers are listed below:

Mol	Chain	Res	Type
1	A	115	ASN
1	A	117	THR
1	A	119	LYS
1	B	115	ASN
1	C	116	LEU

5.3.2 Protein sidechains ⓘ

In the following table, the Percentiles column shows the percent sidechain outliers of the chain as a percentile score with respect to all X-ray entries followed by that with respect to entries of similar resolution.

The Analysed column shows the number of residues for which the sidechain conformation was analysed, and the total number of residues.

Mol	Chain	Analysed	Rotameric	Outliers	Percentiles	
1	A	160/166 (96%)	152 (95%)	8 (5%)	28	62
1	B	158/166 (95%)	149 (94%)	9 (6%)	24	56
1	C	157/166 (95%)	152 (97%)	5 (3%)	44	78
All	All	475/498 (95%)	453 (95%)	22 (5%)	31	65

5 of 22 residues with a non-rotameric sidechain are listed below:

Mol	Chain	Res	Type
1	B	35	VAL
1	B	47	LEU
1	C	116	LEU
1	B	44	SER
1	B	45	ASP

Some sidechains can be flipped to improve hydrogen bonding and reduce clashes. All (3) such sidechains are listed below:

Mol	Chain	Res	Type
1	C	74	ASN
1	C	103	ASN
1	C	187	ASN

5.3.3 RNA [i](#)

There are no RNA molecules in this entry.

5.4 Non-standard residues in protein, DNA, RNA chains [i](#)

There are no non-standard protein/DNA/RNA residues in this entry.

5.5 Carbohydrates [i](#)

There are no carbohydrates in this entry.

5.6 Ligand geometry [i](#)

Of 9 ligands modelled in this entry, 3 are monoatomic - leaving 6 for Mogul analysis.

In the following table, the Counts columns list the number of bonds (or angles) for which Mogul statistics could be retrieved, the number of bonds (or angles) that are observed in the model and the number of bonds (or angles) that are defined in the Chemical Component Dictionary. The Link column lists molecule types, if any, to which the group is linked. The Z score for a bond length (or angle) is the number of standard deviations the observed value is removed from the expected value. A bond length (or angle) with $|Z| > 2$ is considered an outlier worth inspection. RMSZ is the root-mean-square of all Z scores of the bond lengths (or angles).

Mol	Type	Chain	Res	Link	Bond lengths			Bond angles		
					Counts	RMSZ	$\# Z > 2$	Counts	RMSZ	$\# Z > 2$
3	C8E	A	209	-	20,20,20	0.47	0	19,19,19	0.43	0
3	C8E	A	210	-	20,20,20	0.62	0	19,19,19	0.65	0
3	C8E	B	209	-	20,20,20	0.44	0	19,19,19	0.63	0
3	C8E	B	210	-	20,20,20	0.59	0	19,19,19	0.58	0
3	C8E	C	209	-	20,20,20	0.43	0	19,19,19	0.47	0
3	C8E	C	210	-	20,20,20	0.41	0	19,19,19	0.34	0

In the following table, the Chirals column lists the number of chiral outliers, the number of chiral centers analysed, the number of these observed in the model and the number defined in the

Chemical Component Dictionary. Similar counts are reported in the Torsion and Rings columns.
'-' means no outliers of that kind were identified.

Mol	Type	Chain	Res	Link	Chirals	Torsions	Rings
3	C8E	A	209	-	-	0/18/18/18	0/0/0/0
3	C8E	A	210	-	-	0/18/18/18	0/0/0/0
3	C8E	B	209	-	-	0/18/18/18	0/0/0/0
3	C8E	B	210	-	-	0/18/18/18	0/0/0/0
3	C8E	C	209	-	-	0/18/18/18	0/0/0/0
3	C8E	C	210	-	-	0/18/18/18	0/0/0/0

There are no bond length outliers.

There are no bond angle outliers.

There are no chirality outliers.

There are no torsion outliers.

There are no ring outliers.

6 monomers are involved in 79 short contacts:

Mol	Chain	Res	Type	Clashes	Symm-Clashes
3	A	209	C8E	4	0
3	A	210	C8E	11	0
3	B	209	C8E	16	0
3	B	210	C8E	18	0
3	C	209	C8E	14	0
3	C	210	C8E	16	0

5.7 Other polymers [i](#)

There are no such residues in this entry.

5.8 Polymer linkage issues [i](#)

There are no chain breaks in this entry.

6 Fit of model and data [i](#)

6.1 Protein, DNA and RNA chains [i](#)

In the following table, the column labelled ‘#RSRZ> 2’ contains the number (and percentage) of RSRZ outliers, followed by percent RSRZ outliers for the chain as percentile scores relative to all X-ray entries and entries of similar resolution. The OWAB column contains the minimum, median, 95th percentile and maximum values of the occupancy-weighted average B-factor per residue. The column labelled ‘Q< 0.9’ lists the number of (and percentage) of residues with an average occupancy less than 0.9.

Mol	Chain	Analysed	<RSRZ>	#RSRZ>2	OWAB(Å ²)	Q<0.9
1	A	208/214 (97%)	-0.03	3 (1%) 75 69	58, 84, 153, 192	0
1	B	204/214 (95%)	0.01	8 (3%) 40 29	58, 85, 160, 217	0
1	C	202/214 (94%)	0.05	2 (0%) 82 77	60, 94, 173, 211	0
All	All	614/642 (95%)	0.01	13 (2%) 64 54	58, 89, 163, 217	0

The worst 5 of 13 RSRZ outliers are listed below:

Mol	Chain	Res	Type	RSRZ
1	B	90	LEU	5.3
1	B	54	GLY	3.4
1	B	85	PRO	3.0
1	B	116	LEU	3.0
1	A	115	ASN	2.7

6.2 Non-standard residues in protein, DNA, RNA chains [i](#)

There are no non-standard protein/DNA/RNA residues in this entry.

6.3 Carbohydrates [i](#)

There are no carbohydrates in this entry.

6.4 Ligands [i](#)

In the following table, the Atoms column lists the number of modelled atoms in the group and the number defined in the chemical component dictionary. LLDF column lists the quality of electron density of the group with respect to its neighbouring residues in protein, DNA or RNA chains. The B-factors column lists the minimum, median, 95th percentile and maximum values of B factors

of atoms in the group. The column labelled 'Q< 0.9' lists the number of atoms with occupancy less than 0.9.

Mol	Type	Chain	Res	Atoms	RSCC	RSR	LLDF	B-factors(\AA^2)	Q<0.9
3	C8E	C	210	21/21	0.64	0.99	31.32	162,183,191,193	0
3	C8E	B	209	21/21	0.74	0.69	15.98	119,139,166,168	0
3	C8E	A	209	21/21	0.58	0.55	12.78	86,144,172,173	0
3	C8E	C	209	21/21	0.63	0.51	10.54	103,130,155,158	7
3	C8E	A	210	21/21	0.63	0.48	8.12	83,130,156,159	0
3	C8E	B	210	21/21	0.62	0.61	7.46	92,145,158,160	0
2	CA	A	208	1/1	0.95	0.14	-0.83	111,111,111,111	0
2	CA	B	208	1/1	0.94	0.09	-1.46	109,109,109,109	0
2	CA	C	208	1/1	0.94	0.09	-2.69	120,120,120,120	0

6.5 Other polymers [i](#)

There are no such residues in this entry.