



Full wwPDB X-ray Structure Validation Report ⓘ

Feb 12, 2017 – 11:41 pm GMT

PDB ID : 1E1X
Title : HUMAN CYCLIN DEPENDENT KINASE 2 COMPLEXED WITH THE INHIBITOR NU6027
Authors : Endicott, J.A.; Noble, M.E.M.; Johnson, L.N.
Deposited on : 2000-05-11
Resolution : 1.85 Å(reported)

This is a Full wwPDB X-ray Structure Validation Report for a publicly released PDB entry.

We welcome your comments at validation@mail.wwpdb.org

A user guide is available at

<http://wwpdb.org/validation/2016/XrayValidationReportHelp>

with specific help available everywhere you see the ⓘ symbol.

The following versions of software and data (see [references ⓘ](#)) were used in the production of this report:

MolProbity	:	4.02b-467
Mogul	:	1.7.2 (RC1), CSD as538be (2017)
Xtriage (Phenix)	:	NOT EXECUTED
EDS	:	NOT EXECUTED
Percentile statistics	:	20161228.v01 (using entries in the PDB archive December 28th 2016)
Ideal geometry (proteins)	:	Engh & Huber (2001)
Ideal geometry (DNA, RNA)	:	Parkinson et al. (1996)
Validation Pipeline (wwPDB-VP)	:	recalc28949

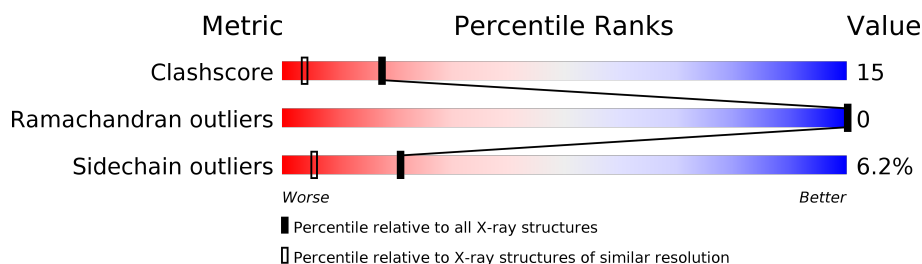
1 Overall quality at a glance

The following experimental techniques were used to determine the structure:

X-RAY DIFFRACTION

The reported resolution of this entry is 1.85 Å.

Percentile scores (ranging between 0-100) for global validation metrics of the entry are shown in the following graphic. The table shows the number of entries on which the scores are based.



Metric	Whole archive (#Entries)	Similar resolution (#Entries, resolution range(Å))
Clashscore	112137	2083 (1.86-1.86)
Ramachandran outliers	110173	2060 (1.86-1.86)
Sidechain outliers	110143	2060 (1.86-1.86)

The table below summarises the geometric issues observed across the polymeric chains and their fit to the electron density. The red, orange, yellow and green segments on the lower bar indicate the fraction of residues that contain outliers for ≥ 3 , 2, 1 and 0 types of geometric quality criteria. A grey segment represents the fraction of residues that are not modelled. The numeric value for each fraction is indicated below the corresponding segment, with a dot representing fractions $\leq 5\%$. The upper red bar (where present) indicates the fraction of residues that have poor fit to the electron density. The numeric value is given above the bar.

Note EDS was not executed.

Mol	Chain	Length	Quality of chain
1	A	299	 61% 30% 6% . .

2 Entry composition [i](#)

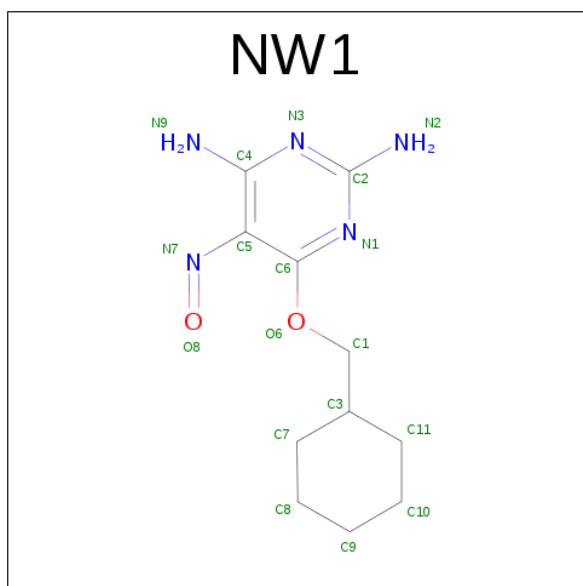
There are 3 unique types of molecules in this entry. The entry contains 2499 atoms, of which 0 are hydrogens and 0 are deuteriums.

In the tables below, the ZeroOcc column contains the number of atoms modelled with zero occupancy, the AltConf column contains the number of residues with at least one atom in alternate conformation and the Trace column contains the number of residues modelled with at most 2 atoms.

- Molecule 1 is a protein called CYCLIN-DEPENDENT PROTEIN KINASE 2.

Mol	Chain	Residues	Atoms					ZeroOcc	AltConf	Trace
1	A	291	Total	C	N	O	S	0	0	0
			2338	1525	397	408	8			

- Molecule 2 is 6-CYCLOHEXYLMETHYLOXY-5-NITROSO-PYRIMIDINE-2,4-DIAMINE (three-letter code: NW1) (formula: C₁₁H₁₇N₅O₂).



Mol	Chain	Residues	Atoms				ZeroOcc	AltConf
2	A	1	Total	C	N	O	0	0
			18	11	5	2		

- Molecule 3 is water.

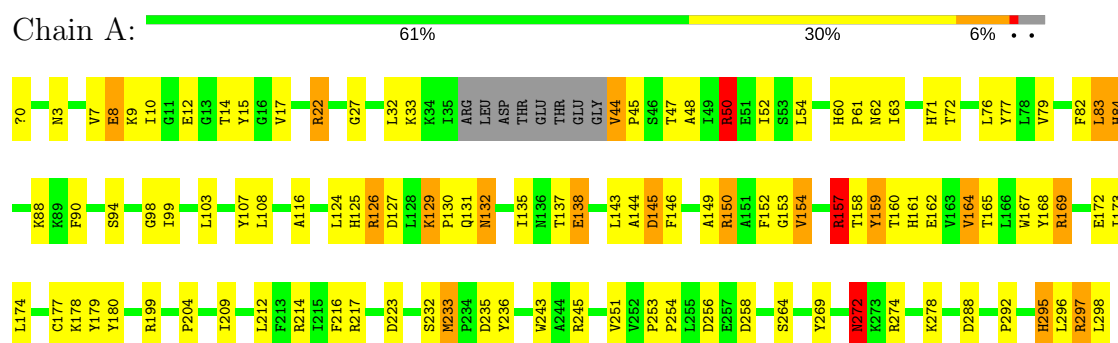
Mol	Chain	Residues	Atoms		ZeroOcc	AltConf
3	A	143	Total	O	0	0
			143	143		

3 Residue-property plots

These plots are drawn for all protein, RNA and DNA chains in the entry. The first graphic for a chain summarises the proportions of the various outlier classes displayed in the second graphic. The second graphic shows the sequence view annotated by issues in geometry and electron density. Residues are color-coded according to the number of geometric quality criteria for which they contain at least one outlier: green = 0, yellow = 1, orange = 2 and red = 3 or more. A red dot above a residue indicates a poor fit to the electron density ($RSRZ > 2$). Stretches of 2 or more consecutive residues without any outlier are shown as a green connector. Residues present in the sample, but not in the model, are shown in grey.

Note EDS was not executed.

• Molecule 1: CYCLIN-DEPENDENT PROTEIN KINASE 2



4 Data and refinement statistics

Xtriage (Phenix) and EDS were not executed - this section is therefore incomplete.

Property	Value	Source
Space group	P 21 21 21	Depositor
Cell constants a, b, c, α , β , γ	52.65Å 69.90Å 71.61Å 90.00° 90.00° 90.00°	Depositor
Resolution (Å)	25.00 – 1.85	Depositor
% Data completeness (in resolution range)	96.4 (25.00-1.85)	Depositor
R_{merge}	0.06	Depositor
R_{sym}	(Not available)	Depositor
Refinement program	REFMAC	Depositor
R, R_{free}	0.213 , 0.281	Depositor
Estimated twinning fraction	No twinning to report.	Xtriage
Total number of atoms	2499	wwPDB-VP
Average B, all atoms (Å ²)	38.0	wwPDB-VP

5 Model quality

5.1 Standard geometry

Bond lengths and bond angles in the following residue types are not validated in this section: NW1, ACE

The Z score for a bond length (or angle) is the number of standard deviations the observed value is removed from the expected value. A bond length (or angle) with $|Z| > 5$ is considered an outlier worth inspection. RMSZ is the root-mean-square of all Z scores of the bond lengths (or angles).

Mol	Chain	Bond lengths		Bond angles	
		RMSZ	$\# Z > 5$	RMSZ	$\# Z > 5$
1	A	0.85	0/2397	1.88	54/3252 (1.7%)

There are no bond length outliers.

All (54) bond angle outliers are listed below:

Mol	Chain	Res	Type	Atoms	Z	Observed(°)	Ideal(°)
1	A	22	ARG	NE-CZ-NH1	20.20	130.40	120.30
1	A	150	ARG	NE-CZ-NH2	15.27	127.93	120.30
1	A	22	ARG	NE-CZ-NH2	-14.77	112.92	120.30
1	A	274	ARG	NE-CZ-NH1	14.64	127.62	120.30
1	A	126	ARG	NE-CZ-NH1	13.47	127.03	120.30
1	A	236	TYR	CB-CG-CD2	-13.44	112.94	121.00
1	A	126	ARG	CD-NE-CZ	12.77	141.48	123.60
1	A	22	ARG	CD-NE-CZ	12.15	140.61	123.60
1	A	150	ARG	CD-NE-CZ	11.00	139.00	123.60
1	A	236	TYR	CB-CG-CD1	10.20	127.12	121.00
1	A	288	ASP	CB-CG-OD2	10.14	127.42	118.30
1	A	245	ARG	NE-CZ-NH1	9.83	125.22	120.30
1	A	180	TYR	CB-CG-CD2	-9.27	115.44	121.00
1	A	150	ARG	NE-CZ-NH1	-9.17	115.71	120.30
1	A	107	TYR	CB-CG-CD2	-9.13	115.52	121.00
1	A	256	ASP	CB-CG-OD2	8.88	126.30	118.30
1	A	179	TYR	CB-CG-CD2	-8.79	115.73	121.00
1	A	50	ARG	NE-CZ-NH2	8.53	124.56	120.30
1	A	199	ARG	NE-CZ-NH1	-8.43	116.09	120.30
1	A	168	TYR	CB-CG-CD2	-8.02	116.19	121.00
1	A	272	ASN	CB-CG-OD1	-7.25	107.10	121.60
1	A	214	ARG	NE-CZ-NH2	7.24	123.92	120.30
1	A	180	TYR	CB-CG-CD1	7.18	125.31	121.00
1	A	77	TYR	CB-CG-CD2	-7.17	116.70	121.00

Continued on next page...

Continued from previous page...

Mol	Chain	Res	Type	Atoms	Z	Observed(°)	Ideal(°)
1	A	126	ARG	NE-CZ-NH2	-7.15	116.72	120.30
1	A	233	MET	CA-CB-CG	-6.80	101.73	113.30
1	A	264	SER	N-CA-CB	6.76	120.65	110.50
1	A	152	PHE	CB-CA-C	-6.61	97.17	110.40
1	A	295	HIS	N-CA-CB	-6.59	98.74	110.60
1	A	169	ARG	NE-CZ-NH1	6.54	123.57	120.30
1	A	235	ASP	CB-CG-OD2	6.54	124.19	118.30
1	A	217	ARG	CD-NE-CZ	6.46	132.65	123.60
1	A	124	LEU	CA-CB-CG	6.27	129.71	115.30
1	A	164	VAL	CB-CA-C	6.25	123.27	111.40
1	A	138	GLU	CA-CB-CG	6.21	127.07	113.40
1	A	138	GLU	OE1-CD-OE2	6.17	130.71	123.30
1	A	258	ASP	CB-CG-OD2	6.07	123.76	118.30
1	A	129	LYS	CD-CE-NZ	6.06	125.64	111.70
1	A	274	ARG	NE-CZ-NH2	-5.75	117.43	120.30
1	A	180	TYR	C-N-CA	5.73	136.04	121.70
1	A	272	ASN	OD1-CG-ND2	5.65	134.88	121.90
1	A	243	TRP	CA-CB-CG	5.62	124.38	113.70
1	A	145	ASP	CB-CG-OD2	5.57	123.31	118.30
1	A	251	VAL	O-C-N	-5.50	113.90	122.70
1	A	245	ARG	CD-NE-CZ	5.47	131.26	123.60
1	A	15	TYR	CB-CG-CD2	-5.47	117.72	121.00
1	A	157	ARG	NE-CZ-NH1	5.44	123.02	120.30
1	A	169	ARG	CD-NE-CZ	-5.32	116.15	123.60
1	A	84	HIS	N-CA-CB	5.28	120.11	110.60
1	A	44	VAL	CB-CA-C	-5.26	101.40	111.40
1	A	269	TYR	CB-CG-CD2	-5.24	117.86	121.00
1	A	138	GLU	CB-CA-C	-5.23	99.95	110.40
1	A	199	ARG	NH1-CZ-NH2	5.10	125.02	119.40
1	A	108	LEU	CB-CG-CD2	-5.01	102.48	111.00

There are no chirality outliers.

There are no planarity outliers.

5.2 Too-close contacts ⓘ

In the following table, the Non-H and H(model) columns list the number of non-hydrogen atoms and hydrogen atoms in the chain respectively. The H(added) column lists the number of hydrogen atoms added and optimized by MolProbity. The Clashes column lists the number of clashes within the asymmetric unit, whereas Symm-Clashes lists symmetry related clashes.

Mol	Chain	Non-H	H(model)	H(added)	Clashes	Symm-Clashes
1	A	2338	0	2393	73	0
2	A	18	0	17	2	0
3	A	143	0	0	16	1
All	All	2499	0	2410	73	1

The all-atom clashscore is defined as the number of clashes found per 1000 atoms (including hydrogen atoms). The all-atom clashscore for this structure is 15.

All (73) close contacts within the same asymmetric unit are listed below, sorted by their clash magnitude.

Atom-1	Atom-2	Interatomic distance (Å)	Clash overlap (Å)
1:A:0:ACE:H2	1:A:3:ASN:H	1.33	0.89
1:A:125:HIS:HD2	1:A:127:ASP:H	1.23	0.84
1:A:44:VAL:HG23	1:A:71:HIS:CE1	2.21	0.76
1:A:60:HIS:HD2	1:A:62:ASN:H	1.36	0.73
1:A:88:LYS:HE3	1:A:131:GLN:NE2	2.05	0.72
1:A:60:HIS:CD2	1:A:62:ASN:H	2.12	0.68
1:A:84:HIS:CD2	1:A:298:LEU:HD13	2.32	0.65
1:A:44:VAL:HG21	1:A:76:LEU:HD22	1.78	0.64
1:A:129:LYS:HE3	1:A:131:GLN:OE1	1.98	0.63
1:A:125:HIS:CD2	1:A:127:ASP:H	2.13	0.63
1:A:22:ARG:NH1	1:A:27:GLY:O	2.32	0.62
1:A:129:LYS:H	1:A:132:ASN:HD21	1.49	0.61
1:A:165:THR:HG22	3:A:2068:HOH:O	2.01	0.60
1:A:12:GLU:HG2	1:A:159:TYR:HE1	1.67	0.59
1:A:272:ASN:HB3	3:A:2129:HOH:O	2.01	0.59
1:A:10:ILE:HD11	1:A:82:PHE:HE1	1.69	0.58
1:A:158:THR:HG23	1:A:162:GLU:O	2.05	0.57
1:A:116:ALA:HB1	1:A:278:LYS:HG2	1.86	0.56
1:A:44:VAL:HA	3:A:2021:HOH:O	2.05	0.56
1:A:10:ILE:HG21	2:A:401:NW1:H11	1.87	0.56
1:A:212:LEU:HG	1:A:216:PHE:CZ	2.40	0.56
1:A:84:HIS:CD2	3:A:2037:HOH:O	2.59	0.56
1:A:17:VAL:HB	1:A:159:TYR:CZ	2.40	0.55
1:A:125:HIS:HE1	1:A:144:ALA:O	1.91	0.55
1:A:17:VAL:HB	1:A:159:TYR:OH	2.07	0.54
1:A:129:LYS:HE2	1:A:131:GLN:HB2	1.91	0.53
1:A:0:ACE:H2	1:A:3:ASN:N	2.15	0.52
1:A:14:THR:HG21	1:A:154:VAL:HG12	1.91	0.52
1:A:159:TYR:HD1	3:A:2009:HOH:O	1.92	0.52
1:A:169:ARG:HD3	1:A:173:ILE:CG2	2.40	0.51
1:A:223:ASP:HB2	3:A:2100:HOH:O	2.11	0.51

Continued on next page...

Continued from previous page...

Atom-1	Atom-2	Interatomic distance (Å)	Clash overlap (Å)
1:A:47:THR:HG23	1:A:48:ALA:N	2.26	0.51
1:A:164:VAL:HG13	3:A:2068:HOH:O	2.11	0.50
1:A:88:LYS:HE3	1:A:131:GLN:HE22	1.74	0.50
1:A:177:CYS:HB2	1:A:233:MET:HE3	1.91	0.50
1:A:137:THR:HG23	3:A:2057:HOH:O	2.12	0.50
1:A:135:ILE:HD12	1:A:296:LEU:HD21	1.94	0.49
1:A:99:ILE:HG23	1:A:103:LEU:HD23	1.95	0.48
1:A:50:ARG:O	1:A:54:LEU:HG	2.13	0.48
1:A:88:LYS:HE2	1:A:130:PRO:HB2	1.96	0.48
1:A:272:ASN:ND2	3:A:2129:HOH:O	2.46	0.48
1:A:84:HIS:HB2	3:A:2036:HOH:O	2.13	0.47
1:A:295:HIS:ND1	1:A:295:HIS:N	2.59	0.47
1:A:169:ARG:HG2	1:A:174:LEU:HG	1.97	0.47
1:A:159:TYR:CE1	1:A:160:THR:HG23	2.51	0.46
1:A:84:HIS:HB3	1:A:298:LEU:HD22	1.98	0.46
1:A:132:ASN:HD22	1:A:132:ASN:C	2.19	0.46
1:A:94:SER:O	1:A:98:GLY:N	2.36	0.46
1:A:83:LEU:O	2:A:401:NW1:N2	2.49	0.46
1:A:0:ACE:H3	1:A:3:ASN:OD1	2.16	0.45
1:A:209:ILE:HA	1:A:209:ILE:HD12	1.91	0.45
1:A:278:LYS:HG3	3:A:2133:HOH:O	2.16	0.45
1:A:149:ALA:HB1	1:A:154:VAL:HG22	1.98	0.44
1:A:90:PHE:HZ	1:A:295:HIS:CE1	2.34	0.44
1:A:153:GLY:HA2	3:A:2066:HOH:O	2.17	0.44
1:A:157:ARG:HG3	1:A:161:HIS:O	2.16	0.44
1:A:48:ALA:O	1:A:52:ILE:HG12	2.18	0.44
1:A:84:HIS:HB2	3:A:2057:HOH:O	2.17	0.43
1:A:253:PRO:N	1:A:254:PRO:CD	2.82	0.43
1:A:32:LEU:HD22	1:A:79:VAL:HG22	2.01	0.43
1:A:33:LYS:NZ	3:A:2019:HOH:O	2.52	0.43
1:A:33:LYS:NZ	1:A:145:ASP:OD1	2.49	0.42
1:A:9:LYS:NZ	1:A:159:TYR:OH	2.52	0.42
1:A:278:LYS:HE2	3:A:2045:HOH:O	2.20	0.42
1:A:7:VAL:HG12	1:A:8:GLU:HG2	2.02	0.42
1:A:167:TRP:CD1	1:A:204:PRO:HA	2.56	0.41
1:A:60:HIS:CG	1:A:61:PRO:HD2	2.55	0.41
1:A:135:ILE:CD1	1:A:296:LEU:HD21	2.50	0.41
1:A:44:VAL:CG1	1:A:45:PRO:HD2	2.51	0.41
1:A:178:LYS:HD3	1:A:178:LYS:HA	1.80	0.41
1:A:63:ILE:HD13	1:A:143:LEU:HD12	2.03	0.41
1:A:297:ARG:HG2	3:A:2140:HOH:O	2.20	0.41

Continued on next page...

Continued from previous page...

Atom-1	Atom-2	Interatomic distance (Å)	Clash overlap (Å)
1:A:172:GLU:HA	1:A:233:MET:HE1	2.02	0.40

All (1) symmetry-related close contacts are listed below. The label for Atom-2 includes the symmetry operator and encoded unit-cell translations to be applied.

Atom-1	Atom-2	Interatomic distance (Å)	Clash overlap (Å)
3:A:2057:HOH:O	3:A:2119:HOH:O[2_564]	2.02	0.18

5.3 Torsion angles [i](#)

5.3.1 Protein backbone [i](#)

In the following table, the Percentiles column shows the percent Ramachandran outliers of the chain as a percentile score with respect to all X-ray entries followed by that with respect to entries of similar resolution.

The Analysed column shows the number of residues for which the backbone conformation was analysed, and the total number of residues.

Mol	Chain	Analysed	Favoured	Allowed	Outliers	Percentiles	
1	A	287/299 (96%)	282 (98%)	5 (2%)	0	100	100

There are no Ramachandran outliers to report.

5.3.2 Protein sidechains [i](#)

In the following table, the Percentiles column shows the percent sidechain outliers of the chain as a percentile score with respect to all X-ray entries followed by that with respect to entries of similar resolution.

The Analysed column shows the number of residues for which the sidechain conformation was analysed, and the total number of residues.

Mol	Chain	Analysed	Rotameric	Outliers	Percentiles	
1	A	256/263 (97%)	240 (94%)	16 (6%)	21	6

All (16) residues with a non-rotameric sidechain are listed below:

Mol	Chain	Res	Type
1	A	8	GLU
1	A	50	ARG
1	A	72	THR
1	A	83	LEU
1	A	126	ARG
1	A	132	ASN
1	A	138	GLU
1	A	146	PHE
1	A	150	ARG
1	A	154	VAL
1	A	157	ARG
1	A	159	TYR
1	A	232	SER
1	A	272	ASN
1	A	292	PRO
1	A	297	ARG

Some sidechains can be flipped to improve hydrogen bonding and reduce clashes. All (6) such sidechains are listed below:

Mol	Chain	Res	Type
1	A	60	HIS
1	A	71	HIS
1	A	84	HIS
1	A	125	HIS
1	A	132	ASN
1	A	268	HIS

5.3.3 RNA ⓘ

There are no RNA molecules in this entry.

5.4 Non-standard residues in protein, DNA, RNA chains ⓘ

There are no non-standard protein/DNA/RNA residues in this entry.

5.5 Carbohydrates ⓘ

There are no carbohydrates in this entry.

5.6 Ligand geometry

1 ligand is modelled in this entry.

In the following table, the Counts columns list the number of bonds (or angles) for which Mogul statistics could be retrieved, the number of bonds (or angles) that are observed in the model and the number of bonds (or angles) that are defined in the chemical component dictionary. The Link column lists molecule types, if any, to which the group is linked. The Z score for a bond length (or angle) is the number of standard deviations the observed value is removed from the expected value. A bond length (or angle) with $|Z| > 2$ is considered an outlier worth inspection. RMSZ is the root-mean-square of all Z scores of the bond lengths (or angles).

Mol	Type	Chain	Res	Link	Bond lengths			Bond angles		
					Counts	RMSZ	# $ Z > 2$	Counts	RMSZ	# $ Z > 2$
2	NW1	A	401	-	19,19,19	2.93	8 (42%)	24,25,25	2.78	9 (37%)

In the following table, the Chirals column lists the number of chiral outliers, the number of chiral centers analysed, the number of these observed in the model and the number defined in the chemical component dictionary. Similar counts are reported in the Torsion and Rings columns. '-' means no outliers of that kind were identified.

Mol	Type	Chain	Res	Link	Chirals	Torsions	Rings
2	NW1	A	401	-	-	0/7/15/15	0/2/2/2

All (8) bond length outliers are listed below:

Mol	Chain	Res	Type	Atoms	Z	Observed(Å)	Ideal(Å)
2	A	401	NW1	C2-N3	-4.79	1.26	1.35
2	A	401	NW1	C5-C4	-2.96	1.33	1.41
2	A	401	NW1	C2-N1	2.38	1.39	1.35
2	A	401	NW1	C6-N1	2.74	1.36	1.32
2	A	401	NW1	C5-N7	3.17	1.45	1.35
2	A	401	NW1	O6-C6	3.51	1.40	1.35
2	A	401	NW1	C5-C6	4.08	1.49	1.41
2	A	401	NW1	C4-N3	8.18	1.47	1.35

All (9) bond angle outliers are listed below:

Mol	Chain	Res	Type	Atoms	Z	Observed(°)	Ideal(°)
2	A	401	NW1	N3-C2-N1	-4.46	118.21	125.45
2	A	401	NW1	C9-C8-C7	-2.32	106.62	111.42
2	A	401	NW1	O6-C6-N1	-2.07	117.30	119.99
2	A	401	NW1	N9-C4-N3	2.50	120.70	117.00
2	A	401	NW1	C2-N1-C6	2.76	120.03	116.06
2	A	401	NW1	C4-C5-C6	2.99	116.59	114.56

Continued on next page...

Continued from previous page...

Mol	Chain	Res	Type	Atoms	Z	Observed(°)	Ideal(°)
2	A	401	NW1	O6-C6-C5	4.00	121.30	116.48
2	A	401	NW1	N2-C2-N3	4.81	124.93	117.24
2	A	401	NW1	C2-N3-C4	8.77	126.73	116.99

There are no chirality outliers.

There are no torsion outliers.

There are no ring outliers.

1 monomer is involved in 2 short contacts:

Mol	Chain	Res	Type	Clashes	Symm-Clashes
2	A	401	NW1	2	0

5.7 Other polymers [i](#)

There are no such residues in this entry.

5.8 Polymer linkage issues [i](#)

There are no chain breaks in this entry.

6 Fit of model and data

6.1 Protein, DNA and RNA chains

EDS was not executed - this section is therefore empty.

6.2 Non-standard residues in protein, DNA, RNA chains

EDS was not executed - this section is therefore empty.

6.3 Carbohydrates

EDS was not executed - this section is therefore empty.

6.4 Ligands

EDS was not executed - this section is therefore empty.

6.5 Other polymers

EDS was not executed - this section is therefore empty.