



Full wwPDB X-ray Structure Validation Report ⓘ

Nov 5, 2017 – 12:44 AM EDT

PDB ID : 4E28
Title : Structure of human thymidylate synthase in inactive conformation with a novel non-peptidic inhibitor
Authors : Tochowicz, A.; Finer-Moore, J.; Stroud, R.M.; Costi, M.P.
Deposited on : unknown
Resolution : 2.30 Å(reported)

This is a Full wwPDB X-ray Structure Validation Report for a publicly released PDB entry.

We welcome your comments at validation@mail.wwpdb.org

A user guide is available at

<http://wwpdb.org/validation/2016/XrayValidationReportHelp>

with specific help available everywhere you see the ⓘ symbol.

The following versions of software and data (see [references ⓘ](#)) were used in the production of this report:

MolProbity : 4.02b-467
Mogul : 1.7.2 (RC1), CSD as538be (2017)
Xtriage (Phenix) : 1.9-1692
EDS : rb-20030345
Percentile statistics : 20161228.v01 (using entries in the PDB archive December 28th 2016)
Refmac : 5.8.0135
CCP4 : 6.5.0
Ideal geometry (proteins) : Engh & Huber (2001)
Ideal geometry (DNA, RNA) : Parkinson et al. (1996)
Validation Pipeline (wwPDB-VP) : rb-20030345

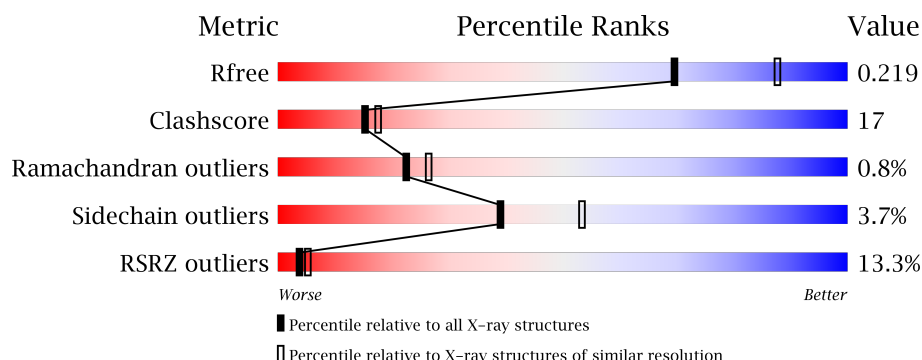
1 Overall quality at a glance

The following experimental techniques were used to determine the structure:

X-RAY DIFFRACTION

The reported resolution of this entry is 2.30 Å.

Percentile scores (ranging between 0-100) for global validation metrics of the entry are shown in the following graphic. The table shows the number of entries on which the scores are based.



Metric	Whole archive (#Entries)	Similar resolution (#Entries, resolution range(Å))
R_{free}	100719	4130 (2.30-2.30)
Clashscore	112137	4751 (2.30-2.30)
Ramachandran outliers	110173	4705 (2.30-2.30)
Sidechain outliers	110143	4704 (2.30-2.30)
RSRZ outliers	101464	4156 (2.30-2.30)

The table below summarises the geometric issues observed across the polymeric chains and their fit to the electron density. The red, orange, yellow and green segments on the lower bar indicate the fraction of residues that contain outliers for ≥ 3 , 2, 1 and 0 types of geometric quality criteria. A grey segment represents the fraction of residues that are not modelled. The numeric value for each fraction is indicated below the corresponding segment, with a dot representing fractions $\leq 5\%$. The upper red bar (where present) indicates the fraction of residues that have poor fit to the electron density. The numeric value is given above the bar.

Mol	Chain	Length	Quality of chain
1	A	325	<div> <div>10%</div> <div>60%</div> <div>15%</div> <div>23%</div> </div>

The following table lists non-polymeric compounds, carbohydrate monomers and non-standard residues in protein, DNA, RNA chains that are outliers for geometric or electron-density-fit criteria:

Mol	Type	Chain	Res	Chirality	Geometry	Clashes	Electron density
3	0MZ	A	403[B]	-	-	X	X
4	9MZ	A	404[A]	-	-	X	X

2 Entry composition

There are 5 unique types of molecules in this entry. The entry contains 2231 atoms, of which 27 are hydrogens and 0 are deuteriums.

In the tables below, the ZeroOcc column contains the number of atoms modelled with zero occupancy, the AltConf column contains the number of residues with at least one atom in alternate conformation and the Trace column contains the number of residues modelled with at most 2 atoms.

- Molecule 1 is a protein called Thymidylate synthase.

Mol	Chain	Residues	Atoms					ZeroOcc	AltConf	Trace
1	A	251	Total	C	N	O	S	0	0	0
			2042	1314	356	358	14			

There are 12 discrepancies between the modelled and reference sequences:

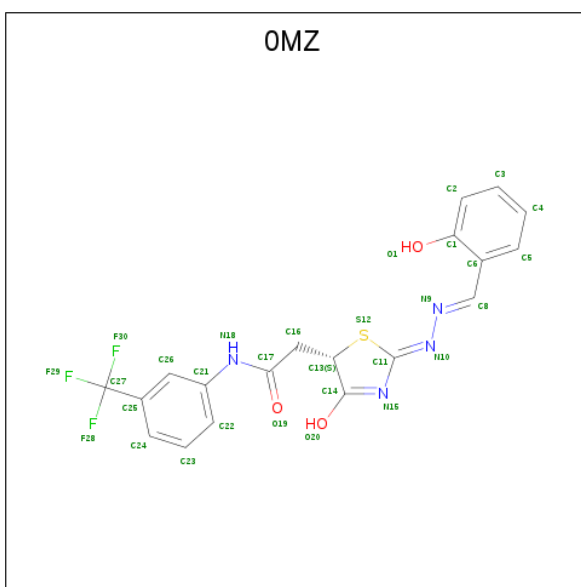
Chain	Residue	Modelled	Actual	Comment	Reference
A	-11	MET	-	EXPRESSION TAG	UNP P04818
A	-10	ARG	-	EXPRESSION TAG	UNP P04818
A	-9	GLY	-	EXPRESSION TAG	UNP P04818
A	-8	SER	-	EXPRESSION TAG	UNP P04818
A	-7	HIS	-	EXPRESSION TAG	UNP P04818
A	-6	HIS	-	EXPRESSION TAG	UNP P04818
A	-5	HIS	-	EXPRESSION TAG	UNP P04818
A	-4	HIS	-	EXPRESSION TAG	UNP P04818
A	-3	HIS	-	EXPRESSION TAG	UNP P04818
A	-2	HIS	-	EXPRESSION TAG	UNP P04818
A	-1	GLY	-	EXPRESSION TAG	UNP P04818
A	0	SER	-	EXPRESSION TAG	UNP P04818

- Molecule 2 is SULFATE ION (three-letter code: SO4) (formula: O₄S).



Mol	Chain	Residues	Atoms			ZeroOcc	AltConf
2	A	1	Total	O	S	0	0
			5	4	1		
2	A	1	Total	O	S	0	0
			5	4	1		

- Molecule 3 is 2-{(2Z,5S)-4-hydroxy-2-[(2E)-(2-hydroxybenzylidene)hydrazinylidene]-2,5-dihydro-1,3-thiazol-5-yl}-N-[3-(trifluoromethyl)phenyl]acetamide (three-letter code: 0MZ) (formula: C₁₉H₁₅F₃N₄O₃S).



Mol	Chain	Residues	Atoms							ZeroOcc	AltConf
3	A	1	Total	C	F	H	N	O	S	0	1
			44	19	3	14	4	3	1		

-
- The chemical structure of 9MZ is shown with the following atom labels:
- Fluorine atoms:** F20, F21, F22, F23, F24, F25, F26, F27, F28, F29, F30, F31, F32, F33, F34, F35, F36, F37, F38, F39, F40, F41, F42, F43, F44, F45, F46, F47, F48, F49, F50, F51, F52, F53, F54, F55, F56, F57, F58, F59, F60, F61, F62, F63, F64, F65, F66, F67, F68, F69, F70, F71, F72, F73, F74, F75, F76, F77, F78, F79, F80, F81, F82, F83, F84, F85, F86, F87, F88, F89, F90, F91, F92, F93, F94, F95, F96, F97, F98, F99, F100, F101, F102, F103, F104, F105, F106, F107, F108, F109, F110, F111, F112, F113, F114, F115, F116, F117, F118, F119, F120, F121, F122, F123, F124, F125, F126, F127, F128, F129, F130, F131, F132, F133, F134, F135, F136, F137, F138, F139, F140, F141, F142, F143, F144, F145, F146, F147, F148, F149, F150, F151, F152, F153, F154, F155, F156, F157, F158, F159, F160, F161, F162, F163, F164, F165, F166, F167, F168, F169, F170, F171, F172, F173, F174, F175, F176, F177, F178, F179, F180, F181, F182, F183, F184, F185, F186, F187, F188, F189, F190, F191, F192, F193, F194, F195, F196, F197, F198, F199, F200, F201, F202, F203, F204, F205, F206, F207, F208, F209, F210, F211, F212, F213, F214, F215, F216, F217, F218, F219, F220, F221, F222, F223, F224, F225, F226, F227, F228, F229, F230, F231, F232, F233, F234, F235, F236, F237, F238, F239, F240, F241, F242, F243, F244, F245, F246, F247, F248, F249, F250, F251, F252, F253, F254, F255, F256, F257, F258, F259, F260, F261, F262, F263, F264, F265, F266, F267, F268, F269, F270, F271, F272, F273, F274, F275, F276, F277, F278, F279, F280, F281, F282, F283, F284, F285, F286, F287, F288, F289, F290, F291, F292, F293, F294, F295, F296, F297, F298, F299, F300, F301, F302, F303, F304, F305, F306, F307, F308, F309, F310, F311, F312, F313, F314, F315, F316, F317, F318, F319, F320, F321, F322, F323, F324, F325, F326, F327, F328, F329, F330, F331, F332, F333, F334, F335, F336, F337, F338, F339, F340, F341, F342, F343, F344, F345, F346, F347, F348, F349, F350, F351, F352, F353, F354, F355, F356, F357, F358, F359, F360, F361, F362, F363, F364, F365, F366, F367, F368, F369, F370, F371, F372, F373, F374, F375, F376, F377, F378, F379, F380, F381, F382, F383, F384, F385, F386, F387, F388, F389, F390, F391, F392, F393, F394, F395, F396, F397, F398, F399, F400, F401, F402, F403, F404, F405, F406, F407, F408, F409, F410, F411, F412, F413, F414, F415, F416, F417, F418, F419, F420, F421, F422, F423, F424, F425, F426, F427, F428, F429, F430, F431, F432, F433, F434, F435, F436, F437, F438, F439, F440, F441, F442, F443, F444, F445, F446, F447, F448, F449, F450, F451, F452, F453, F454, F455, F456, F457, F458, F459, F460, F461, F462, F463, F464, F465, F466, F467, F468, F469, F470, F471, F472, F473, F474, F475, F476, F477, F478, F479, F480, F481, F482, F483, F484, F485, F486, F487, F488, F489, F490, F491, F492, F493, F494, F495, F496, F497, F498, F499, F500, F501, F502, F503, F504, F505, F506, F507, F508, F509, F510, F511, F512, F513, F514, F515, F516, F517, F518, F519, F520, F521, F522, F523, F524, F525, F526, F527, F528, F529, F530, F531, F532, F533, F534, F535, F536, F537, F538, F539, F540, F541, F542, F543, F544, F545, F546, F547, F548, F549, F550, F551, F552, F553, F554, F555, F556, F557, F558, F559, F560, F561, F562, F563, F564, F565, F566, F567, F568, F569, F570, F571, F572, F573, F574, F575, F576, F577, F578, F579, F580, F581, F582, F583, F584, F585, F586, F587, F588, F589, F590, F591, F592, F593, F594, F595, F596, F597, F598, F599, F600, F601, F602, F603, F604, F605, F606, F607, F608, F609, F610, F611, F612, F613, F614, F615, F616, F617, F618, F619, F620, F621, F622, F623, F624, F625, F626, F627, F628, F629, F630, F631, F632, F633, F634, F635, F636, F637, F638, F639, F640, F641, F642, F643, F644, F645, F646, F647, F648, F649, F650, F651, F652, F653, F654, F655, F656, F657, F658, F659, F660, F661, F662, F663, F664, F665, F666, F667, F668, F669, F670, F671, F672, F673, F674, F675, F676, F677, F678, F679, F680, F681, F682, F683, F684, F685, F686, F687, F688, F689, F690, F691, F692, F693, F694, F695, F696, F697, F698, F699, F700, F701, F702, F703, F704, F705, F706, F707, F708, F709, F710, F711, F712, F713, F714, F715, F716, F717, F718, F719, F720, F721, F722, F723, F724, F725, F726, F727, F728, F729, F730, F731, F732, F733, F734, F735, F736, F737, F738, F739, F740, F741, F742, F743, F744, F745, F746, F747, F748, F749, F750, F751, F752, F753, F754, F755, F756, F757, F758, F759, F760, F761, F762, F763, F764, F765, F766, F767, F768, F769, F770, F771, F772, F773, F774, F775, F776, F777, F778, F779, F780, F781, F782, F783, F784, F785, F786, F787, F788, F789, F790, F791, F792, F793, F794, F795, F796, F797, F798, F799, F800, F801, F802, F803, F804, F805, F806, F807, F808, F809, F810, F811, F812, F813, F814, F815, F816, F817, F818, F819, F820, F821, F822, F823, F824, F825, F826, F827, F828, F829, F830, F831, F832, F833, F834, F835, F836, F837, F

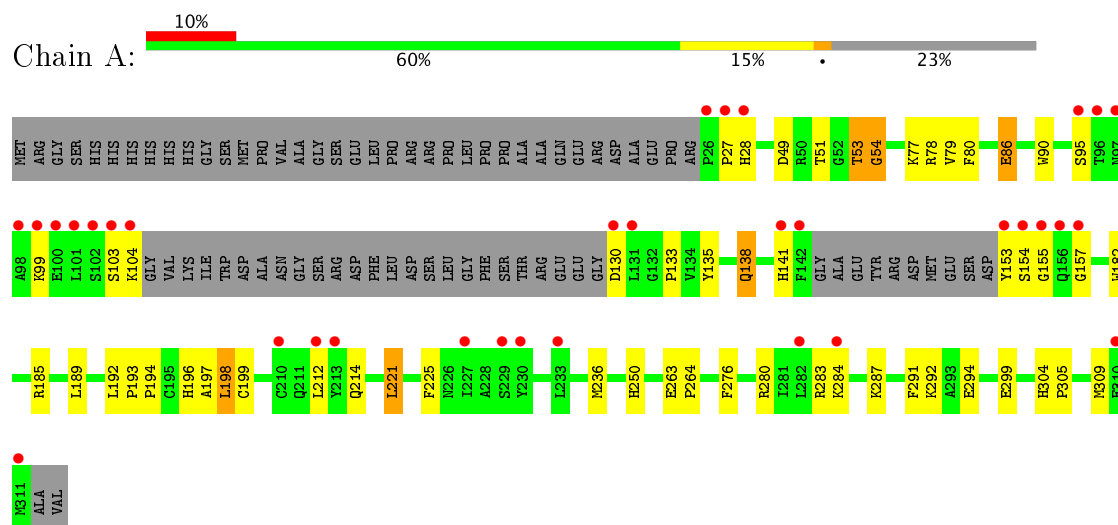
- Molecule 5 is water.

Mol	Chain	Residues	Atoms	ZeroOcc	AltConf
5	A	92	Total O 92 92	0	0

3 Residue-property plots [i](#)

These plots are drawn for all protein, RNA and DNA chains in the entry. The first graphic for a chain summarises the proportions of the various outlier classes displayed in the second graphic. The second graphic shows the sequence view annotated by issues in geometry and electron density. Residues are color-coded according to the number of geometric quality criteria for which they contain at least one outlier: green = 0, yellow = 1, orange = 2 and red = 3 or more. A red dot above a residue indicates a poor fit to the electron density ($RSRZ > 2$). Stretches of 2 or more consecutive residues without any outlier are shown as a green connector. Residues present in the sample, but not in the model, are shown in grey.

- Molecule 1: Thymidylate synthase



4 Data and refinement statistics

Property	Value	Source
Space group	P 31 2 1	Depositor
Cell constants a, b, c, α , β , γ	95.75Å 95.75Å 82.41Å 90.00° 90.00° 120.00°	Depositor
Resolution (Å)	29.23 – 2.30 31.23 – 2.30	Depositor EDS
% Data completeness (in resolution range)	96.1 (29.23-2.30) 96.1 (31.23-2.30)	Depositor EDS
R_{merge}	0.06	Depositor
R_{sym}	0.10	Depositor
$\langle I/\sigma(I) \rangle$ ¹	10.40 (at 2.31Å)	Xtriage
Refinement program	PHENIX 1.7.2_869	Depositor
R, R_{free}	0.188 , 0.229 0.178 , 0.219	Depositor DCC
R_{free} test set	972 reflections (5.13%)	DCC
Wilson B-factor (Å ²)	41.2	Xtriage
Anisotropy	0.022	Xtriage
Bulk solvent k_{sol} (e/Å ³), B_{sol} (Å ²)	0.38 , 59.5	EDS
L-test for twinning ²	$\langle L \rangle = 0.49$, $\langle L^2 \rangle = 0.33$	Xtriage
Estimated twinning fraction	0.028 for -h,-k,l	Xtriage
F_o, F_c correlation	0.95	EDS
Total number of atoms	2231	wwPDB-VP
Average B, all atoms (Å ²)	56.0	wwPDB-VP

Xtriage's analysis on translational NCS is as follows: *The largest off-origin peak in the Patterson function is 3.68% of the height of the origin peak. No significant pseudotranslation is detected.*

¹Intensities estimated from amplitudes.

²Theoretical values of $\langle |L| \rangle$, $\langle L^2 \rangle$ for acentric reflections are 0.5, 0.333 respectively for untwinned datasets, and 0.375, 0.2 for perfectly twinned datasets.

5 Model quality

5.1 Standard geometry

Bond lengths and bond angles in the following residue types are not validated in this section: CME, 9MZ, SO4, 0MZ

The Z score for a bond length (or angle) is the number of standard deviations the observed value is removed from the expected value. A bond length (or angle) with $|Z| > 5$ is considered an outlier worth inspection. RMSZ is the root-mean-square of all Z scores of the bond lengths (or angles).

Mol	Chain	Bond lengths		Bond angles	
		RMSZ	$\# Z > 5$	RMSZ	$\# Z > 5$
1	A	0.44	1/2073 (0.0%)	0.55	0/2800

All (1) bond length outliers are listed below:

Mol	Chain	Res	Type	Atoms	Z	Observed(Å)	Ideal(Å)
1	A	199	CYS	CB-SG	-6.39	1.71	1.82

There are no bond angle outliers.

There are no chirality outliers.

There are no planarity outliers.

5.2 Too-close contacts

In the following table, the Non-H and H(model) columns list the number of non-hydrogen atoms and hydrogen atoms in the chain respectively. The H(added) column lists the number of hydrogen atoms added and optimized by MolProbity. The Clashes column lists the number of clashes within the asymmetric unit, whereas Symm-Clashes lists symmetry related clashes.

Mol	Chain	Non-H	H(model)	H(added)	Clashes	Symm-Clashes
1	A	2042	0	2042	69	0
2	A	10	0	0	0	0
3	A	30	14	14	10	0
4	A	30	13	15	13	0
5	A	92	0	0	12	0
All	All	2204	27	2071	70	0

The all-atom clashscore is defined as the number of clashes found per 1000 atoms (including hydrogen atoms). The all-atom clashscore for this structure is 17.

All (70) close contacts within the same asymmetric unit are listed below, sorted by their clash magnitude.

Atom-1	Atom-2	Interatomic distance (Å)	Clash overlap (Å)
1:A:79:VAL:HA	4:A:404[A]:9MZ:H3	1.28	1.15
1:A:77:LYS:HE3	3:A:403[B]:0MZ:H2	1.43	1.01
1:A:189:LEU:HD12	5:A:552:HOH:O	1.74	0.87
1:A:103:SER:C	1:A:104:LYS:HD2	1.95	0.87
1:A:141:HIS:O	5:A:569:HOH:O	1.94	0.83
1:A:79:VAL:HA	4:A:404[A]:9MZ:C3	2.11	0.79
1:A:80:PHE:HB2	3:A:403[B]:0MZ:H4	1.64	0.78
1:A:138:GLN:HA	5:A:569:HOH:O	1.84	0.78
1:A:77:LYS:HE3	4:A:404[A]:9MZ:H2	1.64	0.78
1:A:53:THR:N	5:A:524:HOH:O	2.16	0.77
1:A:54:GLY:N	5:A:524:HOH:O	2.17	0.77
1:A:27:PRO:HG2	5:A:533:HOH:O	1.86	0.74
1:A:196:HIS:ND1	5:A:575:HOH:O	2.22	0.72
1:A:86:GLU:HG2	1:A:103:SER:OG	1.90	0.72
1:A:80:PHE:H	4:A:404[A]:9MZ:C4	2.02	0.71
1:A:185:ARG:O	1:A:189:LEU:HD13	1.89	0.71
1:A:221:LEU:O	4:A:404[A]:9MZ:H8	1.92	0.69
1:A:80:PHE:H	4:A:404[A]:9MZ:H4	1.59	0.67
1:A:53:THR:OG1	1:A:53:THR:O	2.13	0.64
1:A:135:TYR:HD1	5:A:575:HOH:O	1.84	0.59
1:A:77:LYS:CE	3:A:403[B]:0MZ:H2	2.26	0.59
1:A:80:PHE:CB	3:A:403[B]:0MZ:H4	2.31	0.59
1:A:51:THR:OG1	1:A:53:THR:CG2	2.51	0.59
1:A:80:PHE:H	3:A:403[B]:0MZ:C4	2.15	0.58
1:A:157:GLY:HA2	5:A:585:HOH:O	2.03	0.57
1:A:53:THR:C	5:A:524:HOH:O	2.42	0.57
1:A:225:PHE:HB2	4:A:404[A]:9MZ:C8	2.35	0.57
1:A:138:GLN:HG3	1:A:182:TRP:CE3	2.41	0.56
1:A:104:LYS:HD3	3:A:403[B]:0MZ:H23	1.87	0.56
1:A:198:LEU:C	1:A:198:LEU:HD12	2.27	0.55
1:A:283:ARG:NH1	5:A:526:HOH:O	2.11	0.55
1:A:133:PRO:HD3	4:A:404[A]:9MZ:S12	2.48	0.54
1:A:236:MET:HE3	1:A:291:PHE:CD2	2.45	0.52
1:A:280:ARG:HE	1:A:299:GLU:CD	2.14	0.50
1:A:49:ASP:C	1:A:49:ASP:OD1	2.49	0.50
1:A:103:SER:O	1:A:104:LYS:HD2	2.10	0.50
1:A:287:LYS:HB3	1:A:287:LYS:NZ	2.28	0.49
1:A:80:PHE:CB	4:A:404[A]:9MZ:H4	2.42	0.49
1:A:77:LYS:HE3	4:A:404[A]:9MZ:C2	2.40	0.49
1:A:294:GLU:H	1:A:294:GLU:CD	2.16	0.48

Continued on next page...

Continued from previous page...

Atom-1	Atom-2	Interatomic distance (Å)	Clash overlap (Å)
1:A:214:GLN:OE1	1:A:250:HIS:NE2	2.39	0.47
1:A:304:HIS:HB3	1:A:305:PRO:CD	2.45	0.47
1:A:90:TRP:NE1	1:A:95:SER:HB3	2.30	0.46
4:A:404[A]:9MZ:O19	4:A:404[A]:9MZ:H26	2.15	0.46
1:A:153:TYR:O	1:A:155:GLY:N	2.37	0.45
1:A:104:LYS:HD2	1:A:104:LYS:N	2.29	0.45
1:A:80:PHE:HB2	4:A:404[A]:9MZ:H4	1.98	0.45
1:A:86:GLU:HG2	1:A:103:SER:CB	2.45	0.45
1:A:236:MET:CE	1:A:291:PHE:CD2	3.00	0.44
1:A:49:ASP:OD1	1:A:51:THR:N	2.49	0.44
1:A:236:MET:HE3	1:A:291:PHE:CG	2.52	0.44
1:A:263:GLU:HB2	1:A:264:PRO:HD3	1.98	0.44
1:A:263:GLU:N	1:A:264:PRO:CD	2.80	0.44
1:A:78:ARG:O	3:A:403[B]:0MZ:H3	2.19	0.43
1:A:79:VAL:HA	3:A:403[B]:0MZ:C3	2.48	0.43
1:A:193:PRO:HA	1:A:194:PRO:HD3	1.94	0.43
1:A:280:ARG:NH2	5:A:541:HOH:O	2.47	0.43
1:A:221:LEU:HD13	1:A:309:MET:HG3	2.01	0.42
1:A:138:GLN:HG3	1:A:182:TRP:HE3	1.84	0.42
1:A:153:TYR:C	1:A:155:GLY:H	2.22	0.42
1:A:77:LYS:HE3	3:A:403[B]:0MZ:C2	2.30	0.41
1:A:80:PHE:H	4:A:404[A]:9MZ:C3	2.32	0.41
1:A:192:LEU:HD13	1:A:192:LEU:O	2.21	0.41
1:A:86:GLU:CD	1:A:103:SER:HB3	2.40	0.41
1:A:287:LYS:CB	1:A:287:LYS:NZ	2.83	0.41
1:A:225:PHE:CD1	3:A:403[B]:0MZ:N9	2.89	0.41
1:A:292:LYS:HB3	1:A:294:GLU:OE1	2.21	0.40
1:A:304:HIS:HB3	1:A:305:PRO:HD2	2.03	0.40
1:A:28:HIS:HE1	1:A:276:PHE:CZ	2.39	0.40
1:A:197:ALA:HB1	1:A:212:LEU:HD11	2.03	0.40

There are no symmetry-related clashes.

5.3 Torsion angles ⓘ

5.3.1 Protein backbone ⓘ

In the following table, the Percentiles column shows the percent Ramachandran outliers of the chain as a percentile score with respect to all X-ray entries followed by that with respect to entries of similar resolution.

The Analysed column shows the number of residues for which the backbone conformation was analysed, and the total number of residues.

Mol	Chain	Analysed	Favoured	Allowed	Outliers	Percentiles	
1	A	243/325 (75%)	234 (96%)	7 (3%)	2 (1%)	22	26

All (2) Ramachandran outliers are listed below:

Mol	Chain	Res	Type
1	A	154	SER
1	A	54	GLY

5.3.2 Protein sidechains ⓘ

In the following table, the Percentiles column shows the percent sidechain outliers of the chain as a percentile score with respect to all X-ray entries followed by that with respect to entries of similar resolution.

The Analysed column shows the number of residues for which the sidechain conformation was analysed, and the total number of residues.

Mol	Chain	Analysed	Rotameric	Outliers	Percentiles	
1	A	219/279 (78%)	211 (96%)	8 (4%)	39	53

All (8) residues with a non-rotameric sidechain are listed below:

Mol	Chain	Res	Type
1	A	53	THR
1	A	86	GLU
1	A	99	LYS
1	A	130	ASP
1	A	138	GLN
1	A	198	LEU
1	A	221	LEU
1	A	284	LYS

Some sidechains can be flipped to improve hydrogen bonding and reduce clashes. All (2) such sidechains are listed below:

Mol	Chain	Res	Type
1	A	196	HIS
1	A	226	ASN

5.3.3 RNA ⓘ

There are no RNA molecules in this entry.

5.4 Non-standard residues in protein, DNA, RNA chains ⓘ

2 non-standard protein/DNA/RNA residues are modelled in this entry.

In the following table, the Counts columns list the number of bonds (or angles) for which Mogul statistics could be retrieved, the number of bonds (or angles) that are observed in the model and the number of bonds (or angles) that are defined in the Chemical Component Dictionary. The Link column lists molecule types, if any, to which the group is linked. The Z score for a bond length (or angle) is the number of standard deviations the observed value is removed from the expected value. A bond length (or angle) with $|Z| > 2$ is considered an outlier worth inspection. RMSZ is the root-mean-square of all Z scores of the bond lengths (or angles).

Mol	Type	Chain	Res	Link	Bond lengths			Bond angles		
					Counts	RMSZ	$\# Z > 2$	Counts	RMSZ	$\# Z > 2$
1	CME	A	180	1	9,9,10	0.73	0	6,9,11	0.98	0
1	CME	A	195	1	9,9,10	0.72	0	6,9,11	1.11	1 (16%)

In the following table, the Chirals column lists the number of chiral outliers, the number of chiral centers analysed, the number of these observed in the model and the number defined in the Chemical Component Dictionary. Similar counts are reported in the Torsion and Rings columns. '-' means no outliers of that kind were identified.

Mol	Type	Chain	Res	Link	Chirals	Torsions	Rings
1	CME	A	180	1	-	0/5/8/10	0/0/0/0
1	CME	A	195	1	-	0/5/8/10	0/0/0/0

There are no bond length outliers.

All (1) bond angle outliers are listed below:

Mol	Chain	Res	Type	Atoms	Z	Observed(°)	Ideal(°)
1	A	195	CME	CB-SG-SD	2.07	107.86	103.83

There are no chirality outliers.

There are no torsion outliers.

There are no ring outliers.

No monomer is involved in short contacts.

5.5 Carbohydrates ⓘ

There are no carbohydrates in this entry.

5.6 Ligand geometry ⓘ

4 ligands are modelled in this entry.

In the following table, the Counts columns list the number of bonds (or angles) for which Mogul statistics could be retrieved, the number of bonds (or angles) that are observed in the model and the number of bonds (or angles) that are defined in the Chemical Component Dictionary. The Link column lists molecule types, if any, to which the group is linked. The Z score for a bond length (or angle) is the number of standard deviations the observed value is removed from the expected value. A bond length (or angle) with $|Z| > 2$ is considered an outlier worth inspection. RMSZ is the root-mean-square of all Z scores of the bond lengths (or angles).

Mol	Type	Chain	Res	Link	Bond lengths			Bond angles		
					Counts	RMSZ	$\# Z > 2$	Counts	RMSZ	$\# Z > 2$
2	SO4	A	401	-	4,4,4	0.10	0	6,6,6	0.27	0
2	SO4	A	402	-	4,4,4	0.22	0	6,6,6	0.27	0
3	0MZ	A	403[B]	-	32,32,32	1.34	4 (12%)	39,45,45	1.69	5 (12%)
4	9MZ	A	404[A]	-	31,32,32	1.67	6 (19%)	39,45,45	1.50	3 (7%)

In the following table, the Chirals column lists the number of chiral outliers, the number of chiral centers analysed, the number of these observed in the model and the number defined in the Chemical Component Dictionary. Similar counts are reported in the Torsion and Rings columns. '-' means no outliers of that kind were identified.

Mol	Type	Chain	Res	Link	Chirals	Torsions	Rings
2	SO4	A	401	-	-	0/0/0/0	0/0/0/0
2	SO4	A	402	-	-	0/0/0/0	0/0/0/0
3	0MZ	A	403[B]	-	-	0/18/32/32	0/3/3/3
4	9MZ	A	404[A]	-	-	3/20/32/32	0/3/3/3

All (10) bond length outliers are listed below:

Mol	Chain	Res	Type	Atoms	Z	Observed(Å)	Ideal(Å)
4	A	404[A]	9MZ	N10-N9	-5.37	1.32	1.38
3	A	403[B]	0MZ	C11-S12	-4.95	1.66	1.74
4	A	404[A]	9MZ	C11-S12	-3.72	1.65	1.76
4	A	404[A]	9MZ	C13-S12	-3.47	1.75	1.82
4	A	404[A]	9MZ	C11-N15	-3.35	1.26	1.31
3	A	403[B]	0MZ	C13-S12	-3.31	1.76	1.82
3	A	403[B]	0MZ	C11-N10	-2.68	1.25	1.31

Continued on next page...

Continued from previous page...

Mol	Chain	Res	Type	Atoms	Z	Observed(Å)	Ideal(Å)
4	A	404[A]	9MZ	C8-N9	-2.60	1.25	1.28
4	A	404[A]	9MZ	C11-N10	-2.56	1.32	1.36
3	A	403[B]	0MZ	C14-N15	-2.32	1.27	1.29

All (8) bond angle outliers are listed below:

Mol	Chain	Res	Type	Atoms	Z	Observed(°)	Ideal(°)
4	A	404[A]	9MZ	S12-C11-N15	-6.34	114.34	117.77
3	A	403[B]	0MZ	C14-C13-S12	-4.20	101.94	105.80
3	A	403[B]	0MZ	C21-N18-C17	-3.94	120.44	127.49
4	A	404[A]	9MZ	C16-C13-S12	-3.65	109.23	113.14
3	A	403[B]	0MZ	C6-C8-N9	-3.14	117.53	121.66
4	A	404[A]	9MZ	C5-C6-C1	2.05	120.66	118.19
3	A	403[B]	0MZ	C11-N10-N9	2.53	115.52	111.41
3	A	403[B]	0MZ	C8-N9-N10	5.64	122.37	113.05

There are no chirality outliers.

All (3) torsion outliers are listed below:

Mol	Chain	Res	Type	Atoms
4	A	404[A]	9MZ	S12-C11-N10-N9
4	A	404[A]	9MZ	N15-C11-N10-N9
4	A	404[A]	9MZ	C17-C16-C13-S12

There are no ring outliers.

2 monomers are involved in 23 short contacts:

Mol	Chain	Res	Type	Clashes	Symm-Clashes
3	A	403[B]	0MZ	10	0
4	A	404[A]	9MZ	13	0

5.7 Other polymers ⓘ

There are no such residues in this entry.

5.8 Polymer linkage issues ⓘ

There are no chain breaks in this entry.

6 Fit of model and data ⓘ

6.1 Protein, DNA and RNA chains ⓘ

In the following table, the column labelled ‘#RSRZ> 2’ contains the number (and percentage) of RSRZ outliers, followed by percent RSRZ outliers for the chain as percentile scores relative to all X-ray entries and entries of similar resolution. The OWAB column contains the minimum, median, 95th percentile and maximum values of the occupancy-weighted average B-factor per residue. The column labelled ‘Q< 0.9’ lists the number of (and percentage) of residues with an average occupancy less than 0.9.

Mol	Chain	Analysed	<RSRZ>	#RSRZ>2	OWAB(Å ²)	Q<0.9
1	A	249/325 (76%)	0.67	33 (13%) 4 5	26, 46, 112, 143	0

All (33) RSRZ outliers are listed below:

Mol	Chain	Res	Type	RSRZ
1	A	153	TYR	10.4
1	A	154	SER	8.7
1	A	102	SER	7.5
1	A	104	LYS	7.0
1	A	103	SER	7.0
1	A	99	LYS	6.9
1	A	26	PRO	6.7
1	A	98	ALA	6.5
1	A	96	THR	6.4
1	A	97	ASN	5.7
1	A	155	GLY	5.6
1	A	100	GLU	4.9
1	A	156	GLN	4.8
1	A	101	LEU	3.9
1	A	157	GLY	3.8
1	A	95	SER	3.6
1	A	27	PRO	3.5
1	A	227	ILE	3.3
1	A	212	LEU	3.2
1	A	311	MET	3.2
1	A	142	PHE	3.0
1	A	28	HIS	2.8
1	A	130	ASP	2.8
1	A	282	LEU	2.8
1	A	213	TYR	2.8
1	A	284	LYS	2.8
1	A	141	HIS	2.7

Continued on next page...

Continued from previous page...

Mol	Chain	Res	Type	RSRZ
1	A	310	GLU	2.5
1	A	230	TYR	2.3
1	A	131	LEU	2.3
1	A	210	CYS	2.2
1	A	229	SER	2.2
1	A	233	LEU	2.0

6.2 Non-standard residues in protein, DNA, RNA chains [i](#)

In the following table, the Atoms column lists the number of modelled atoms in the group and the number defined in the chemical component dictionary. LLDF column lists the quality of electron density of the group with respect to its neighbouring residues in protein, DNA or RNA chains. The B-factors column lists the minimum, median, 95th percentile and maximum values of B factors of atoms in the group. The column labelled 'Q< 0.9' lists the number of atoms with occupancy less than 0.9.

Mol	Type	Chain	Res	Atoms	RSCC	RSR	LLDF	B-factors(Å ²)	Q<0.9
1	CME	A	180	10/11	0.97	0.13	-	37,46,100,101	0
1	CME	A	195	10/11	0.96	0.12	-	34,47,80,85	0

6.3 Carbohydrates [i](#)

There are no carbohydrates in this entry.

6.4 Ligands [i](#)

In the following table, the Atoms column lists the number of modelled atoms in the group and the number defined in the chemical component dictionary. LLDF column lists the quality of electron density of the group with respect to its neighbouring residues in protein, DNA or RNA chains. The B-factors column lists the minimum, median, 95th percentile and maximum values of B factors of atoms in the group. The column labelled 'Q< 0.9' lists the number of atoms with occupancy less than 0.9.

Mol	Type	Chain	Res	Atoms	RSCC	RSR	LLDF	B-factors(Å ²)	Q<0.9
4	9MZ	A	404[A]	30/30	0.49	0.50	1.63	73,130,165,168	43
3	0MZ	A	403[B]	30/30	0.62	0.52	1.56	85,130,164,168	44
2	SO4	A	402	5/5	0.95	0.14	-0.35	61,68,83,95	0
2	SO4	A	401	5/5	0.99	0.12	-0.54	59,59,71,81	0

6.5 Other polymers [i](#)

There are no such residues in this entry.