



Full wwPDB X-ray Structure Validation Report ⓘ

Oct 17, 2017 – 02:26 AM EDT

PDB ID : 3E7J
Title : HeparinaseII H202A/Y257A double mutant complexed with a heparan sulfate tetrasaccharide substrate
Authors : Shaya, D.; Cygler, M.
Deposited on : unknown
Resolution : 2.10 Å(reported)

This is a Full wwPDB X-ray Structure Validation Report for a publicly released PDB entry.

We welcome your comments at validation@mail.wwpdb.org

A user guide is available at

<http://wwpdb.org/validation/2016/XrayValidationReportHelp>

with specific help available everywhere you see the ⓘ symbol.

The following versions of software and data (see [references ⓘ](#)) were used in the production of this report:

MolProbity : 4.02b-467
Mogul : 1.7.2 (RC1), CSD as538be (2017)
Xtriage (Phenix) : 1.9-1692
EDS : rb-20030345
Percentile statistics : 20161228.v01 (using entries in the PDB archive December 28th 2016)
Refmac : 5.8.0135
CCP4 : 6.5.0
Ideal geometry (proteins) : Engh & Huber (2001)
Ideal geometry (DNA, RNA) : Parkinson et al. (1996)
Validation Pipeline (wwPDB-VP) : rb-20030345

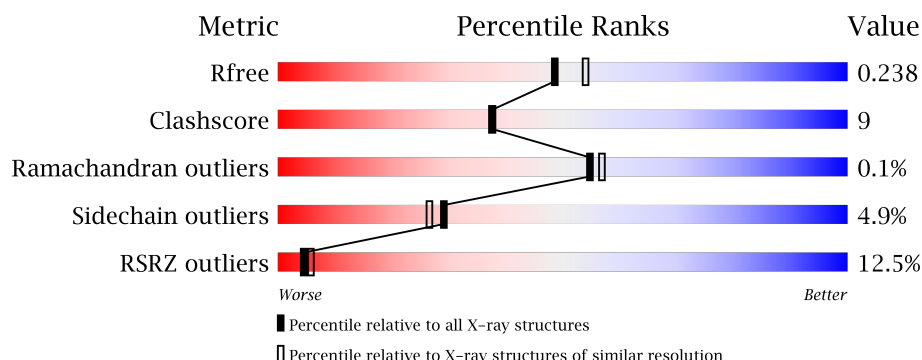
1 Overall quality at a glance

The following experimental techniques were used to determine the structure:

X-RAY DIFFRACTION

The reported resolution of this entry is 2.10 Å.

Percentile scores (ranging between 0-100) for global validation metrics of the entry are shown in the following graphic. The table shows the number of entries on which the scores are based.



Metric	Whole archive (#Entries)	Similar resolution (#Entries, resolution range(Å))
R_{free}	100719	4243 (2.10-2.10)
Clashscore	112137	4788 (2.10-2.10)
Ramachandran outliers	110173	4740 (2.10-2.10)
Sidechain outliers	110143	4741 (2.10-2.10)
RSRZ outliers	101464	4275 (2.10-2.10)

The table below summarises the geometric issues observed across the polymeric chains and their fit to the electron density. The red, orange, yellow and green segments on the lower bar indicate the fraction of residues that contain outliers for ≥ 3 , 2, 1 and 0 types of geometric quality criteria. A grey segment represents the fraction of residues that are not modelled. The numeric value for each fraction is indicated below the corresponding segment, with a dot representing fractions $\leq 5\%$. The upper red bar (where present) indicates the fraction of residues that have poor fit to the electron density. The numeric value is given above the bar.

Mol	Chain	Length	Quality of chain
1	A	749	<div> <div>12%</div> <div>82%</div> <div>14%</div> <div>..</div> </div>
1	B	749	<div> <div>13%</div> <div>79%</div> <div>16%</div> <div>..</div> </div>

The following table lists non-polymeric compounds, carbohydrate monomers and non-standard residues in protein, DNA, RNA chains that are outliers for geometric or electron-density-fit criteria:

Mol	Type	Chain	Res	Chirality	Geometry	Clashes	Electron density
3	ACT	A	773	-	-	-	X
4	NAG	A	776	X	-	-	-
4	NAG	B	776	X	-	-	-
5	GCU	A	775	X	-	-	-
5	GCU	B	775	X	-	-	-
6	GCD	B	777	X	-	-	-

2 Entry composition

There are 7 unique types of molecules in this entry. The entry contains 12784 atoms, of which 0 are hydrogens and 0 are deuteriums.

In the tables below, the ZeroOcc column contains the number of atoms modelled with zero occupancy, the AltConf column contains the number of residues with at least one atom in alternate conformation and the Trace column contains the number of residues modelled with at most 2 atoms.

- Molecule 1 is a protein called Heparinase II protein.

Mol	Chain	Residues	Atoms					ZeroOcc	AltConf	Trace
1	A	743	Total	C	N	O	S	0	0	0
			5938	3823	1001	1091	23			
1	B	743	Total	C	N	O	S	0	0	0
			5938	3823	1001	1091	23			

There are 6 discrepancies between the modelled and reference sequences:

Chain	Residue	Modelled	Actual	Comment	Reference
A	202	ALA	HIS	ENGINEERED	UNP Q46080
A	257	ALA	TYR	ENGINEERED	UNP Q46080
A	758	ALA	PRO	SEE REMARK 999	UNP Q46080
B	202	ALA	HIS	ENGINEERED	UNP Q46080
B	257	ALA	TYR	ENGINEERED	UNP Q46080
B	758	ALA	PRO	SEE REMARK 999	UNP Q46080

- Molecule 2 is ZINC ION (three-letter code: ZN) (formula: Zn).

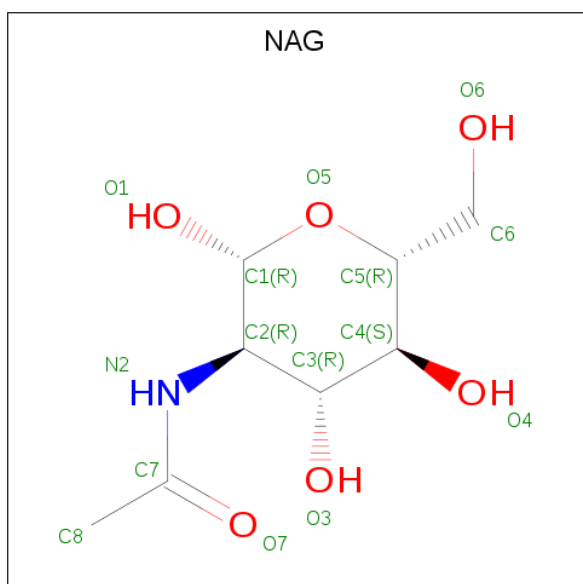
Mol	Chain	Residues	Atoms		ZeroOcc	AltConf
2	B	1	Total	Zn	0	0
			1	1		
2	A	1	Total	Zn	0	0
			1	1		

- Molecule 3 is ACETATE ION (three-letter code: ACT) (formula: C₂H₃O₂).



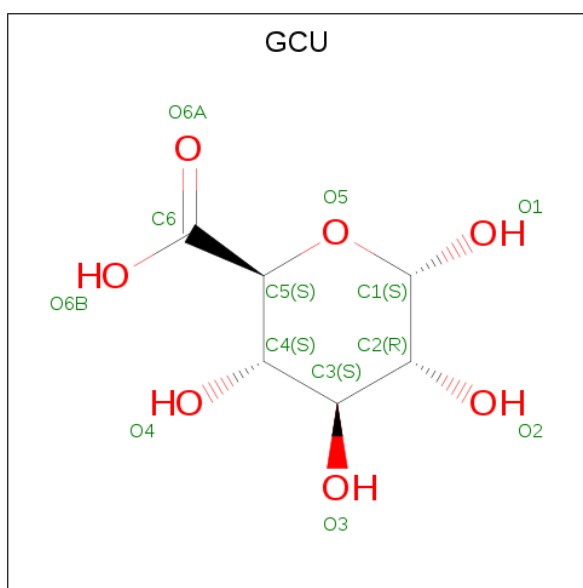
Mol	Chain	Residues	Atoms			ZeroOcc	AltConf
3	A	1	Total	C	O	0	0
			4	2	2		
3	A	1	Total	C	O	0	0
			4	2	2		
3	A	1	Total	C	O	0	0
			4	2	2		
3	A	1	Total	C	O	0	0
			4	2	2		
3	B	1	Total	C	O	0	0
			4	2	2		

- Molecule 4 is N-ACETYL-D-GLUCOSAMINE (three-letter code: NAG) (formula: $C_8H_{15}NO_6$).



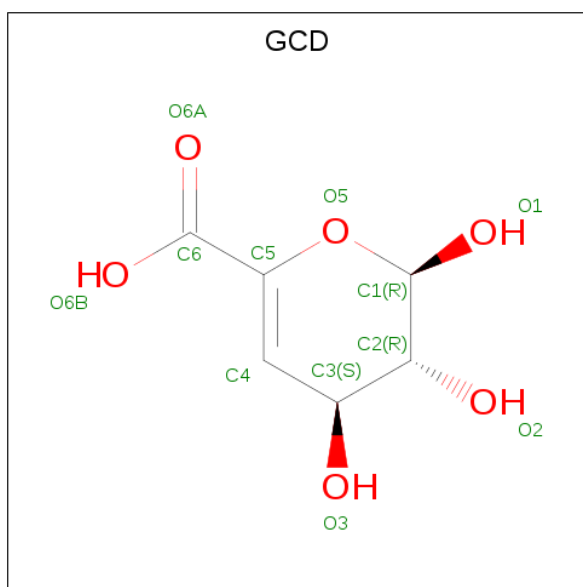
Mol	Chain	Residues	Atoms				ZeroOcc	AltConf
4	A	1	Total	C	N	O	0	0
			15	8	1	6		
4	A	1	Total	C	N	O	0	0
			14	8	1	5		
4	B	1	Total	C	N	O	0	0
			15	8	1	6		
4	B	1	Total	C	N	O	0	0
			14	8	1	5		

- Molecule 5 is D-GLUCURONIC ACID (three-letter code: GCU) (formula: $C_6H_{10}O_7$).



Mol	Chain	Residues	Atoms			ZeroOcc	AltConf
5	A	1	Total	C	O	0	0
			12	6	6		
5	B	1	Total	C	O	0	0
			12	6	6		

- Molecule 6 is 4,5-DEHYDRO-D-GLUCURONIC ACID (three-letter code: GCD) (formula: $C_6H_8O_6$).



Mol	Chain	Residues	Atoms			ZeroOcc	AltConf
6	A	1	Total	C	O	0	0
			11	6	5		
6	B	1	Total	C	O	0	0
			11	6	5		

- Molecule 7 is water.

Mol	Chain	Residues	Atoms		ZeroOcc	AltConf
7	A	480	Total	O	0	0
			480	480		
7	B	302	Total	O	0	0
			302	302		

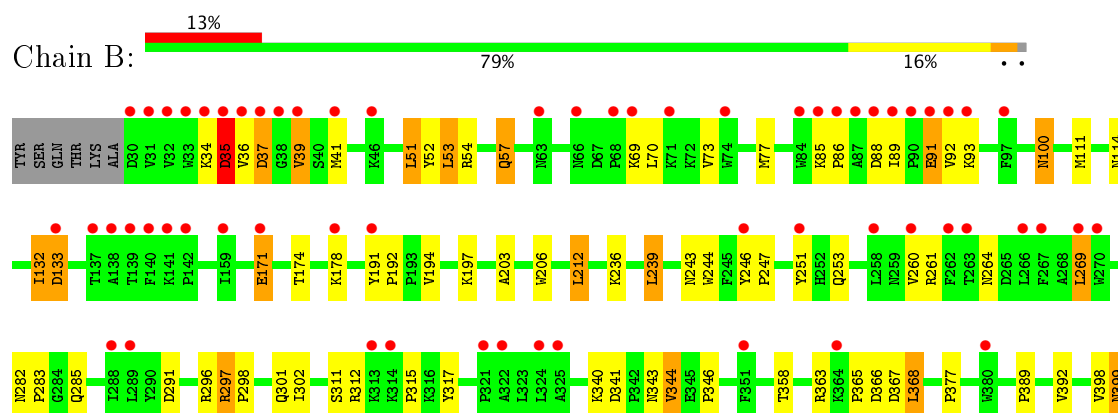
3 Residue-property plots [i](#)

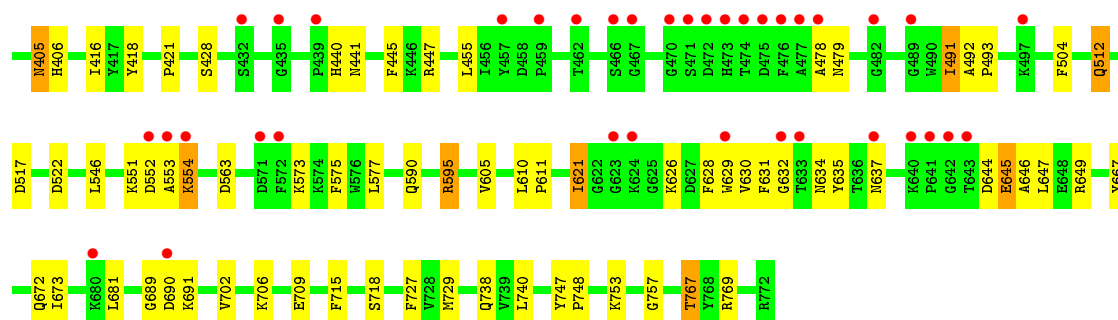
These plots are drawn for all protein, RNA and DNA chains in the entry. The first graphic for a chain summarises the proportions of the various outlier classes displayed in the second graphic. The second graphic shows the sequence view annotated by issues in geometry and electron density. Residues are color-coded according to the number of geometric quality criteria for which they contain at least one outlier: green = 0, yellow = 1, orange = 2 and red = 3 or more. A red dot above a residue indicates a poor fit to the electron density ($RSRZ > 2$). Stretches of 2 or more consecutive residues without any outlier are shown as a green connector. Residues present in the sample, but not in the model, are shown in grey.

• Molecule 1: Heparinase II protein



• Molecule 1: Heparinase II protein





4 Data and refinement statistics

Property	Value	Source
Space group	P 1 21 1	Depositor
Cell constants a, b, c, α , β , γ	51.95Å 162.21Å 93.84Å 90.00° 105.97° 90.00°	Depositor
Resolution (Å)	42.52 – 2.10 42.53 – 2.10	Depositor EDS
% Data completeness (in resolution range)	82.9 (42.52-2.10) 82.9 (42.53-2.10)	Depositor EDS
R_{merge}	0.07	Depositor
R_{sym}	(Not available)	Depositor
$\langle I/\sigma(I) \rangle$ ¹	1.68 (at 2.10Å)	Xtriage
Refinement program	REFMAC	Depositor
R, R_{free}	0.199 , 0.234 0.207 , 0.238	Depositor DCC
R_{free} test set	3630 reflections (5.31%)	DCC
Wilson B-factor (Å ²)	36.3	Xtriage
Anisotropy	0.124	Xtriage
Bulk solvent k_{sol} (e/Å ³), B_{sol} (Å ²)	0.35 , 46.9	EDS
L-test for twinning ²	$\langle L \rangle = 0.49$, $\langle L^2 \rangle = 0.32$	Xtriage
Estimated twinning fraction	0.027 for h,-k,-h-l	Xtriage
F_o, F_c correlation	0.94	EDS
Total number of atoms	12784	wwPDB-VP
Average B, all atoms (Å ²)	49.0	wwPDB-VP

Xtriage's analysis on translational NCS is as follows: *The largest off-origin peak in the Patterson function is 4.46% of the height of the origin peak. No significant pseudotranslation is detected.*

¹Intensities estimated from amplitudes.

²Theoretical values of $\langle |L| \rangle$, $\langle L^2 \rangle$ for acentric reflections are 0.5, 0.333 respectively for untwinned datasets, and 0.375, 0.2 for perfectly twinned datasets.

5 Model quality ⓘ

5.1 Standard geometry ⓘ

Bond lengths and bond angles in the following residue types are not validated in this section: NAG, ZN, GCU, GCD, ACT

The Z score for a bond length (or angle) is the number of standard deviations the observed value is removed from the expected value. A bond length (or angle) with $|Z| > 5$ is considered an outlier worth inspection. RMSZ is the root-mean-square of all Z scores of the bond lengths (or angles).

Mol	Chain	Bond lengths		Bond angles	
		RMSZ	# $ Z > 5$	RMSZ	# $ Z > 5$
1	A	0.34	1/6098 (0.0%)	0.55	6/8253 (0.1%)
1	B	0.35	2/6098 (0.0%)	0.57	8/8253 (0.1%)
All	All	0.34	3/12196 (0.0%)	0.56	14/16506 (0.1%)

All (3) bond length outliers are listed below:

Mol	Chain	Res	Type	Atoms	Z	Observed(Å)	Ideal(Å)
1	B	344	VAL	CB-CG2	-7.57	1.36	1.52
1	A	344	VAL	CB-CG2	-7.40	1.37	1.52
1	B	344	VAL	CB-CG1	-7.18	1.37	1.52

All (14) bond angle outliers are listed below:

Mol	Chain	Res	Type	Atoms	Z	Observed(°)	Ideal(°)
1	B	133	ASP	CB-CG-OD2	13.62	130.56	118.30
1	A	133	ASP	CB-CG-OD1	-12.07	107.43	118.30
1	A	133	ASP	CB-CG-OD2	11.43	128.59	118.30
1	A	35	ASP	CB-CG-OD2	10.50	127.75	118.30
1	B	133	ASP	CB-CG-OD1	-10.44	108.91	118.30
1	B	35	ASP	CB-CG-OD2	9.79	127.11	118.30
1	B	35	ASP	CB-CG-OD1	-9.71	109.56	118.30
1	B	344	VAL	CG1-CB-CG2	-9.13	96.29	110.90
1	B	517	ASP	CB-CG-OD2	9.07	126.46	118.30
1	A	35	ASP	CB-CG-OD1	-8.56	110.60	118.30
1	A	517	ASP	CB-CG-OD2	6.64	124.27	118.30
1	A	552	ASP	CB-CG-OD2	6.14	123.83	118.30
1	B	552	ASP	CB-CG-OD1	5.30	123.07	118.30
1	B	91	GLU	CA-CB-CG	5.12	124.66	113.40

There are no chirality outliers.

There are no planarity outliers.

5.2 Too-close contacts

In the following table, the Non-H and H(model) columns list the number of non-hydrogen atoms and hydrogen atoms in the chain respectively. The H(added) column lists the number of hydrogen atoms added and optimized by MolProbity. The Clashes column lists the number of clashes within the asymmetric unit, whereas Symm-Clashes lists symmetry related clashes.

Mol	Chain	Non-H	H(model)	H(added)	Clashes	Symm-Clashes
1	A	5938	0	5853	103	0
1	B	5938	0	5853	106	0
2	A	1	0	0	0	0
2	B	1	0	0	0	0
3	A	16	0	12	1	0
3	B	4	0	3	0	0
4	A	29	0	26	0	0
4	B	29	0	26	0	0
5	A	12	0	6	1	0
5	B	12	0	6	0	0
6	A	11	0	5	0	0
6	B	11	0	5	0	0
7	A	480	0	0	5	0
7	B	302	0	0	2	0
All	All	12784	0	11795	210	0

The all-atom clashscore is defined as the number of clashes found per 1000 atoms (including hydrogen atoms). The all-atom clashscore for this structure is 9.

All (210) close contacts within the same asymmetric unit are listed below, sorted by their clash magnitude.

Atom-1	Atom-2	Interatomic distance (Å)	Clash overlap (Å)
1:A:628:PHE:H	1:A:634:ASN:HD21	1.05	1.02
1:A:769:ARG:HG2	1:A:769:ARG:HH21	1.23	1.01
1:A:769:ARG:CG	1:A:769:ARG:HH21	1.76	0.98
1:B:522:ASP:OD1	1:B:551:LYS:NZ	2.00	0.95
1:B:628:PHE:H	1:B:634:ASN:HD21	1.06	0.94
1:A:53:LEU:HB2	1:A:57:GLN:HG3	1.46	0.93
1:B:253:GLN:HE22	1:B:405:ASN:HB3	1.34	0.92
1:A:253:GLN:HE22	1:A:405:ASN:HB3	1.34	0.90
1:A:590:GLN:NE2	1:A:607:THR:OG1	2.06	0.88
1:B:261:ARG:HH11	1:B:261:ARG:HG3	1.42	0.83

Continued on next page...

Continued from previous page...

Atom-1	Atom-2	Interatomic distance (Å)	Clash overlap (Å)
1:B:398:VAL:O	1:B:399:ASN:HB2	1.79	0.81
1:A:269:LEU:HD23	1:A:285:GLN:HE22	1.46	0.80
1:A:171:GLU:CD	1:A:171:GLU:H	1.86	0.78
1:B:690:ASP:O	1:B:715:PHE:HB2	1.82	0.78
1:B:297:ARG:HB3	1:B:298:PRO:HD2	1.66	0.76
1:A:269:LEU:CD2	1:A:285:GLN:HE22	1.99	0.76
1:A:628:PHE:H	1:A:634:ASN:ND2	1.84	0.75
1:B:628:PHE:H	1:B:634:ASN:ND2	1.84	0.74
1:B:191:TYR:HA	1:B:192:PRO:C	2.08	0.74
1:B:53:LEU:HB2	1:B:57:GLN:HG3	1.68	0.74
1:A:261:ARG:HH11	1:A:261:ARG:HG3	1.52	0.73
1:B:546:LEU:HD22	1:B:702:VAL:HG21	1.70	0.73
1:B:92:VAL:HG13	1:B:92:VAL:O	1.89	0.72
1:A:455:LEU:HD11	1:A:577:LEU:HD11	1.72	0.72
1:B:171:GLU:H	1:B:171:GLU:CD	1.94	0.71
1:A:297:ARG:HB3	1:A:298:PRO:HD2	1.73	0.70
1:A:398:VAL:O	1:A:399:ASN:HB2	1.90	0.70
1:B:86:PRO:HA	1:B:89:ILE:HD12	1.75	0.69
1:A:416:ILE:HG21	1:A:673:ILE:HD12	1.77	0.67
1:A:111:MET:HE2	1:A:126:GLU:HG2	1.77	0.67
1:B:573:LYS:HD3	1:B:575:PHE:CZ	2.30	0.67
1:B:455:LEU:HD11	1:B:577:LEU:HD11	1.76	0.67
1:B:92:VAL:CG1	1:B:92:VAL:O	2.42	0.66
1:A:621:ILE:HD13	1:A:621:ILE:N	2.10	0.66
1:A:628:PHE:N	1:A:634:ASN:HD21	1.87	0.66
1:A:573:LYS:HD3	1:A:575:PHE:CZ	2.31	0.66
1:A:92:VAL:O	1:A:92:VAL:HG13	1.96	0.66
1:B:644:ASP:OD2	1:B:649:ARG:HD2	1.96	0.66
1:A:644:ASP:OD2	1:A:649:ARG:HD2	1.96	0.65
1:B:269:LEU:HG	1:B:285:GLN:HE22	1.61	0.65
1:B:301:GLN:NE2	1:B:311:SER:O	2.29	0.64
1:A:301:GLN:NE2	1:A:311:SER:O	2.30	0.64
1:A:769:ARG:NH2	1:A:769:ARG:HG2	2.05	0.63
1:B:51:LEU:HD13	1:B:52:TYR:CE1	2.33	0.63
1:A:345:GLU:OE1	7:A:1211:HOH:O	2.16	0.63
1:A:590:GLN:HE21	1:A:607:THR:HG23	1.65	0.62
1:A:610:LEU:HA	1:A:611:PRO:C	2.19	0.61
1:B:261:ARG:NH1	1:B:261:ARG:HG3	2.15	0.61
1:B:365:PRO:HA	1:B:368:LEU:HD12	1.83	0.60
1:A:86:PRO:HA	1:A:89:ILE:HD12	1.84	0.59
1:B:629:TRP:CH2	1:B:632:GLY:O	2.54	0.59

Continued on next page...

Continued from previous page...

Atom-1	Atom-2	Interatomic distance (Å)	Clash overlap (Å)
1:A:416:ILE:HG21	1:A:673:ILE:CD1	2.32	0.59
1:A:35:ASP:HB2	7:A:1234:HOH:O	2.03	0.59
1:A:769:ARG:CG	1:A:769:ARG:NH2	2.46	0.59
1:B:610:LEU:HA	1:B:611:PRO:C	2.23	0.58
1:A:365:PRO:HA	1:A:368:LEU:HD12	1.87	0.57
1:A:253:GLN:HE22	1:A:406:HIS:H	1.52	0.57
1:A:92:VAL:O	1:A:92:VAL:CG1	2.52	0.57
1:B:73:VAL:O	1:B:77:MET:HG3	2.05	0.57
1:B:53:LEU:CB	1:B:57:GLN:HG3	2.34	0.57
1:A:590:GLN:NE2	1:A:607:THR:HG23	2.21	0.56
1:A:563:ASP:HB2	1:A:667:TYR:HB2	1.86	0.56
1:B:253:GLN:HE21	1:B:261:ARG:HH12	1.54	0.55
1:A:546:LEU:HD22	1:A:702:VAL:HG21	1.88	0.55
1:A:741:LYS:HA	1:A:767:THR:O	2.07	0.55
1:A:620:SER:C	1:A:621:ILE:HD13	2.27	0.55
1:A:73:VAL:O	1:A:77:MET:HG3	2.07	0.55
1:B:628:PHE:N	1:B:634:ASN:HD21	1.89	0.55
1:B:296:ARG:HE	1:B:302:ILE:HD13	1.72	0.55
1:B:563:ASP:HB2	1:B:667:TYR:HB2	1.87	0.54
1:B:621:ILE:N	1:B:621:ILE:CD1	2.70	0.54
3:A:5:ACT:H3	5:A:775:GCU:H3	1.90	0.54
1:B:260:VAL:HG13	1:B:261:ARG:N	2.23	0.54
1:B:253:GLN:HE22	1:B:406:HIS:H	1.55	0.54
1:A:428:SER:H	1:A:440:HIS:HE1	1.55	0.53
1:A:253:GLN:NE2	1:A:405:ASN:HB3	2.15	0.53
1:A:191:TYR:HA	1:A:192:PRO:C	2.29	0.53
1:B:689:GLY:O	1:B:706:LYS:NZ	2.41	0.53
1:B:260:VAL:CG1	1:B:261:ARG:N	2.70	0.53
1:A:244:TRP:CZ3	1:A:377:PRO:HG3	2.44	0.53
1:B:398:VAL:O	1:B:399:ASN:CB	2.54	0.53
1:B:312:ARG:NH1	1:B:646:ALA:HB2	2.23	0.53
1:A:359:GLN:HG3	7:A:1237:HOH:O	2.09	0.52
1:B:312:ARG:HH11	1:B:312:ARG:HG3	1.74	0.52
1:B:672:GLN:OE1	1:B:681:LEU:HB3	2.09	0.52
1:A:261:ARG:NH1	1:A:261:ARG:HG3	2.21	0.52
1:B:769:ARG:HH11	1:B:769:ARG:HG2	1.73	0.52
1:B:34:LYS:NZ	7:B:1311:HOH:O	2.41	0.52
1:A:111:MET:HE2	1:A:126:GLU:CG	2.39	0.52
1:B:296:ARG:HE	1:B:302:ILE:CD1	2.23	0.52
1:A:111:MET:CE	1:A:126:GLU:CD	2.78	0.51
1:A:246:TYR:N	1:A:247:PRO:CD	2.73	0.51

Continued on next page...

Continued from previous page...

Atom-1	Atom-2	Interatomic distance (Å)	Clash overlap (Å)
1:B:70:LEU:HG	1:B:358:THR:HG21	1.92	0.51
1:B:428:SER:H	1:B:440:HIS:HE1	1.57	0.51
1:A:39:VAL:HG13	1:A:41:MET:HE3	1.93	0.51
1:B:244:TRP:CZ3	1:B:377:PRO:HG3	2.45	0.51
1:B:246:TYR:N	1:B:247:PRO:CD	2.72	0.51
1:B:269:LEU:HG	1:B:285:GLN:NE2	2.26	0.51
1:A:171:GLU:N	1:A:171:GLU:OE1	2.41	0.51
1:A:35:ASP:HA	1:A:39:VAL:O	2.10	0.51
1:A:760:TYR:HE1	7:A:1212:HOH:O	1.95	0.50
1:B:416:ILE:HG21	1:B:673:ILE:HD12	1.94	0.50
1:A:728:VAL:HG22	1:A:760:TYR:HD1	1.76	0.50
1:B:341:ASP:OD1	1:B:343:ASN:ND2	2.43	0.50
1:B:491:ILE:HD12	1:B:492:ALA:H	1.76	0.50
1:A:590:GLN:NE2	1:A:607:THR:CB	2.75	0.49
1:A:373:TYR:CD2	1:A:512:GLN:NE2	2.80	0.49
1:B:37:ASP:HB3	1:B:236:LYS:NZ	2.28	0.49
1:A:253:GLN:NE2	1:A:406:HIS:H	2.10	0.49
1:A:70:LEU:HG	1:A:358:THR:HG21	1.94	0.49
1:A:171:GLU:CD	1:A:171:GLU:N	2.61	0.48
1:A:605:VAL:HG21	1:A:681:LEU:HD11	1.94	0.48
1:A:421:PRO:HD2	1:A:595:ARG:HD2	1.95	0.48
1:B:645:GLU:H	1:B:645:GLU:CD	2.17	0.48
1:B:191:TYR:CA	1:B:192:PRO:C	2.81	0.48
1:A:690:ASP:O	1:A:715:PHE:HB2	2.13	0.48
1:A:714:PRO:HA	1:A:770:PHE:O	2.13	0.48
1:B:718:SER:OG	1:B:767:THR:HG22	2.14	0.48
1:A:440:HIS:HD2	1:A:635:TYR:O	1.97	0.47
1:A:344:VAL:HG12	1:A:349:LYS:HD3	1.96	0.47
1:A:590:GLN:NE2	1:A:607:THR:CG2	2.78	0.47
1:B:315:PRO:HB2	1:B:317:TYR:CZ	2.49	0.47
1:B:174:THR:O	1:B:178:LYS:HG3	2.15	0.47
1:B:296:ARG:HH12	1:B:340:LYS:HE2	1.79	0.47
1:B:440:HIS:HD2	1:B:635:TYR:O	1.97	0.47
1:B:297:ARG:HB3	1:B:298:PRO:CD	2.40	0.47
1:B:421:PRO:HD2	1:B:595:ARG:HD2	1.96	0.47
1:A:398:VAL:O	1:A:399:ASN:CB	2.60	0.46
1:A:253:GLN:HE21	1:A:261:ARG:HH12	1.61	0.46
1:A:455:LEU:CD1	1:A:577:LEU:HD11	2.45	0.46
1:A:260:VAL:HG13	1:A:261:ARG:N	2.30	0.46
1:B:171:GLU:N	1:B:171:GLU:CD	2.67	0.46
1:B:253:GLN:NE2	1:B:406:HIS:H	2.14	0.46

Continued on next page...

Continued from previous page...

Atom-1	Atom-2	Interatomic distance (Å)	Clash overlap (Å)
1:A:296:ARG:HE	1:A:302:ILE:CD1	2.29	0.46
1:A:260:VAL:CG1	1:A:261:ARG:N	2.79	0.45
1:B:192:PRO:HB2	1:B:194:VAL:HG13	1.97	0.45
1:A:39:VAL:HG11	1:A:236:LYS:HD2	1.98	0.45
1:B:206:TRP:HA	1:B:264:ASN:OD1	2.16	0.45
1:B:621:ILE:HG22	1:B:626:LYS:HB3	1.97	0.45
1:A:493:PRO:HD3	1:A:504:PHE:CE2	2.52	0.45
1:A:690:ASP:O	1:A:691:LYS:HB2	2.16	0.45
1:A:680:LYS:HD3	1:A:681:LEU:O	2.17	0.45
1:B:296:ARG:NH1	1:B:340:LYS:HE2	2.32	0.45
1:B:553:ALA:O	1:B:554:LYS:C	2.52	0.45
1:B:605:VAL:HG21	1:B:681:LEU:HD11	1.99	0.45
1:B:54:ARG:O	1:B:57:GLN:HG2	2.16	0.45
1:B:738:GLN:HE21	1:B:740:LEU:HD11	1.82	0.45
1:A:312:ARG:NH1	1:A:646:ALA:HB2	2.31	0.45
1:B:690:ASP:O	1:B:691:LYS:HB2	2.17	0.44
1:B:239:LEU:HD22	1:B:243:ASN:ND2	2.32	0.44
1:A:54:ARG:O	1:A:57:GLN:HG2	2.16	0.44
1:B:36:VAL:O	1:B:37:ASP:HB2	2.17	0.44
1:A:769:ARG:HA	1:A:769:ARG:HD2	1.81	0.44
1:A:111:MET:CE	1:A:126:GLU:OE1	2.66	0.44
1:A:769:ARG:HG3	1:A:769:ARG:HH21	1.74	0.44
1:A:96:ARG:HD2	7:A:1209:HOH:O	2.18	0.44
1:B:253:GLN:NE2	1:B:405:ASN:HB3	2.16	0.44
1:B:197:LYS:O	1:B:203:ALA:HB3	2.17	0.44
1:A:206:TRP:HA	1:A:264:ASN:OD1	2.17	0.43
1:A:296:ARG:HE	1:A:302:ILE:HD13	1.83	0.43
1:A:647:LEU:HD12	1:A:649:ARG:HD3	2.00	0.43
1:B:212:LEU:HD12	1:B:212:LEU:HA	1.90	0.43
1:B:416:ILE:HG21	1:B:673:ILE:CD1	2.48	0.43
1:B:35:ASP:HA	1:B:39:VAL:O	2.18	0.43
1:B:455:LEU:HB2	1:B:575:PHE:HB2	2.00	0.43
1:A:111:MET:CE	1:A:126:GLU:CG	2.97	0.43
1:B:100:ASN:HD22	1:B:346:PRO:HG2	1.83	0.43
1:B:512:GLN:OE1	1:B:512:GLN:C	2.57	0.43
1:A:197:LYS:O	1:A:203:ALA:HB3	2.18	0.43
1:B:37:ASP:HB3	1:B:236:LYS:HZ1	1.84	0.43
1:A:296:ARG:NH1	1:A:340:LYS:HE2	2.33	0.43
1:A:479:ASN:C	1:A:479:ASN:HD22	2.21	0.43
1:B:621:ILE:N	1:B:621:ILE:HD12	2.33	0.43
1:B:647:LEU:HD12	1:B:649:ARG:HD3	1.99	0.42

Continued on next page...

Continued from previous page...

Atom-1	Atom-2	Interatomic distance (Å)	Clash overlap (Å)
1:A:192:PRO:HB3	1:A:229:LEU:HD13	2.01	0.42
1:A:363:ARG:NH1	1:A:367:ASP:OD2	2.52	0.42
1:A:52:TYR:O	1:A:53:LEU:HB3	2.19	0.42
1:B:769:ARG:NH1	1:B:769:ARG:HG2	2.34	0.42
1:B:392:VAL:HG22	1:B:418:TYR:CD1	2.54	0.42
1:B:447:ARG:NH2	1:B:478:ALA:O	2.45	0.42
1:B:493:PRO:HD3	1:B:504:PHE:CE2	2.55	0.42
1:A:174:THR:O	1:A:178:LYS:HG3	2.19	0.42
1:A:100:ASN:HA	1:A:346:PRO:HG2	2.01	0.42
1:B:132:ILE:O	1:B:132:ILE:HD13	2.19	0.42
1:A:769:ARG:NH2	1:A:769:ARG:HG3	2.32	0.42
1:A:392:VAL:HG22	1:A:418:TYR:CD1	2.55	0.42
1:B:298:PRO:CB	1:B:389:PRO:HA	2.50	0.42
1:A:297:ARG:HB3	1:A:298:PRO:CD	2.46	0.42
1:B:85:LYS:O	1:B:88:ASP:N	2.45	0.42
1:A:455:LEU:HB2	1:A:575:PHE:HB2	2.02	0.41
1:A:312:ARG:HG3	1:A:312:ARG:HH11	1.86	0.41
1:A:739:VAL:HG22	1:A:770:PHE:CD2	2.55	0.41
1:B:440:HIS:CD2	1:B:637:ASN:HB2	2.55	0.41
1:A:315:PRO:HB2	1:A:317:TYR:CZ	2.55	0.41
1:A:605:VAL:HG21	1:A:681:LEU:CD1	2.51	0.41
1:B:753:LYS:O	1:B:757:GLY:N	2.52	0.41
1:A:41:MET:HB3	1:A:41:MET:HE3	1.52	0.41
1:B:291:ASP:HB3	7:B:1352:HOH:O	2.21	0.41
1:A:441:ASN:HA	1:A:445:PHE:HB3	2.03	0.41
1:B:57:GLN:HB3	1:B:57:GLN:HE21	1.65	0.41
1:B:630:VAL:O	1:B:631:PHE:C	2.60	0.41
1:B:747:TYR:HA	1:B:748:PRO:HD2	1.90	0.40
1:B:441:ASN:HA	1:B:445:PHE:HB3	2.03	0.40
1:B:455:LEU:CD1	1:B:577:LEU:HD11	2.48	0.40
1:B:709:GLU:HA	1:B:709:GLU:OE1	2.20	0.40
1:B:282:ASN:HA	1:B:283:PRO:HD3	1.94	0.40
1:B:39:VAL:HG13	1:B:41:MET:HG2	2.03	0.40
1:B:363:ARG:NH1	1:B:367:ASP:OD2	2.53	0.40
1:B:53:LEU:HB2	1:B:57:GLN:CG	2.45	0.40
1:B:727:PHE:HB3	1:B:729:MET:HE3	2.03	0.40

There are no symmetry-related clashes.

5.3 Torsion angles

5.3.1 Protein backbone

In the following table, the Percentiles column shows the percent Ramachandran outliers of the chain as a percentile score with respect to all X-ray entries followed by that with respect to entries of similar resolution.

The Analysed column shows the number of residues for which the backbone conformation was analysed, and the total number of residues.

Mol	Chain	Analysed	Favoured	Allowed	Outliers	Percentiles	
1	A	741/749 (99%)	710 (96%)	30 (4%)	1 (0%)	55	57
1	B	741/749 (99%)	707 (95%)	33 (4%)	1 (0%)	55	57
All	All	1482/1498 (99%)	1417 (96%)	63 (4%)	2 (0%)	55	57

All (2) Ramachandran outliers are listed below:

Mol	Chain	Res	Type
1	B	399	ASN
1	A	399	ASN

5.3.2 Protein sidechains

In the following table, the Percentiles column shows the percent sidechain outliers of the chain as a percentile score with respect to all X-ray entries followed by that with respect to entries of similar resolution.

The Analysed column shows the number of residues for which the sidechain conformation was analysed, and the total number of residues.

Mol	Chain	Analysed	Rotameric	Outliers	Percentiles	
1	A	628/633 (99%)	599 (95%)	29 (5%)	31	29
1	B	628/633 (99%)	595 (95%)	33 (5%)	26	24
All	All	1256/1266 (99%)	1194 (95%)	62 (5%)	29	26

All (62) residues with a non-rotameric sidechain are listed below:

Mol	Chain	Res	Type
1	A	37	ASP
1	A	53	LEU
1	A	57	GLN
1	A	69	LYS

Continued on next page...

Continued from previous page...

Mol	Chain	Res	Type
1	A	91	GLU
1	A	93	LYS
1	A	100	ASN
1	A	111	MET
1	A	114	ASN
1	A	132	ILE
1	A	133	ASP
1	A	171	GLU
1	A	212	LEU
1	A	236	LYS
1	A	239	LEU
1	A	251	TYR
1	A	297	ARG
1	A	344	VAL
1	A	368	LEU
1	A	405	ASN
1	A	479	ASN
1	A	491	ILE
1	A	512	GLN
1	A	546	LEU
1	A	595	ARG
1	A	621	ILE
1	A	709	GLU
1	A	729	MET
1	A	769	ARG
1	B	35	ASP
1	B	37	ASP
1	B	39	VAL
1	B	51	LEU
1	B	53	LEU
1	B	57	GLN
1	B	69	LYS
1	B	91	GLU
1	B	93	LYS
1	B	100	ASN
1	B	111	MET
1	B	114	ASN
1	B	132	ILE
1	B	133	ASP
1	B	171	GLU
1	B	212	LEU
1	B	239	LEU

Continued on next page...

Continued from previous page...

Mol	Chain	Res	Type
1	B	251	TYR
1	B	269	LEU
1	B	297	ARG
1	B	344	VAL
1	B	366	ASP
1	B	368	LEU
1	B	405	ASN
1	B	479	ASN
1	B	491	ILE
1	B	512	GLN
1	B	554	LYS
1	B	590	GLN
1	B	595	ARG
1	B	621	ILE
1	B	645	GLU
1	B	767	THR

Some sidechains can be flipped to improve hydrogen bonding and reduce clashes. All (22) such sidechains are listed below:

Mol	Chain	Res	Type
1	A	63	ASN
1	A	66	ASN
1	A	100	ASN
1	A	114	ASN
1	A	253	GLN
1	A	285	GLN
1	A	335	ASN
1	A	440	HIS
1	A	479	ASN
1	A	590	GLN
1	A	634	ASN
1	B	63	ASN
1	B	66	ASN
1	B	100	ASN
1	B	114	ASN
1	B	253	GLN
1	B	285	GLN
1	B	335	ASN
1	B	440	HIS
1	B	590	GLN
1	B	634	ASN
1	B	738	GLN

5.3.3 RNA ⓘ

There are no RNA molecules in this entry.

5.4 Non-standard residues in protein, DNA, RNA chains ⓘ

There are no non-standard protein/DNA/RNA residues in this entry.

5.5 Carbohydrates ⓘ

There are no carbohydrates in this entry.

5.6 Ligand geometry ⓘ

Of 15 ligands modelled in this entry, 2 are monoatomic - leaving 13 for Mogul analysis.

In the following table, the Counts columns list the number of bonds (or angles) for which Mogul statistics could be retrieved, the number of bonds (or angles) that are observed in the model and the number of bonds (or angles) that are defined in the Chemical Component Dictionary. The Link column lists molecule types, if any, to which the group is linked. The Z score for a bond length (or angle) is the number of standard deviations the observed value is removed from the expected value. A bond length (or angle) with $|Z| > 2$ is considered an outlier worth inspection. RMSZ is the root-mean-square of all Z scores of the bond lengths (or angles).

Mol	Type	Chain	Res	Link	Bond lengths			Bond angles		
					Counts	RMSZ	# $ Z > 2$	Counts	RMSZ	# $ Z > 2$
3	ACT	A	3	-	1,3,3	1.41	0	0,3,3	0.00	-
3	ACT	A	4	-	1,3,3	1.63	0	0,3,3	0.00	-
3	ACT	A	5	-	1,3,3	0.99	0	0,3,3	0.00	-
3	ACT	A	773	-	1,3,3	1.42	0	0,3,3	0.00	-
4	NAG	A	774	5	15,15,15	0.54	0	21,21,21	0.94	0
5	GCU	A	775	4	9,12,13	0.92	0	13,17,19	0.65	0
4	NAG	A	776	5,6	14,14,15	0.47	0	15,19,21	0.96	0
6	GCD	A	777	4	7,11,12	1.60	1 (14%)	6,15,17	0.76	0
3	ACT	B	773	-	1,3,3	1.42	0	0,3,3	0.00	-
4	NAG	B	774	5	15,15,15	0.58	0	21,21,21	1.10	1 (4%)
5	GCU	B	775	4	9,12,13	0.92	0	13,17,19	0.63	0
4	NAG	B	776	5,6	14,14,15	0.51	0	15,19,21	0.94	1 (6%)
6	GCD	B	777	4	7,11,12	1.62	1 (14%)	6,15,17	0.66	0

In the following table, the Chirals column lists the number of chiral outliers, the number of chiral centers analysed, the number of these observed in the model and the number defined in the Chemical Component Dictionary. Similar counts are reported in the Torsion and Rings columns.

'-' means no outliers of that kind were identified.

Mol	Type	Chain	Res	Link	Chirals	Torsions	Rings
3	ACT	A	3	-	-	0/0/0/0	0/0/0/0
3	ACT	A	4	-	-	0/0/0/0	0/0/0/0
3	ACT	A	5	-	-	0/0/0/0	0/0/0/0
3	ACT	A	773	-	-	0/0/0/0	0/0/0/0
4	NAG	A	774	5	-	0/6/26/26	0/1/1/1
5	GCU	A	775	4	1/1/5/6	0/0/21/24	0/1/1/1
4	NAG	A	776	5,6	1/1/5/7	0/6/23/26	0/1/1/1
6	GCD	A	777	4	-	0/0/17/20	0/1/1/1
3	ACT	B	773	-	-	0/0/0/0	0/0/0/0
4	NAG	B	774	5	-	0/6/26/26	0/1/1/1
5	GCU	B	775	4	1/1/5/6	0/0/21/24	0/1/1/1
4	NAG	B	776	5,6	1/1/5/7	0/6/23/26	0/1/1/1
6	GCD	B	777	4	1/1/4/6	0/0/17/20	0/1/1/1

All (2) bond length outliers are listed below:

Mol	Chain	Res	Type	Atoms	Z	Observed(Å)	Ideal(Å)
6	A	777	GCD	O5-C5	3.93	1.43	1.37
6	B	777	GCD	O5-C5	3.95	1.43	1.37

All (2) bond angle outliers are listed below:

Mol	Chain	Res	Type	Atoms	Z	Observed(°)	Ideal(°)
4	B	774	NAG	C1-C2-N2	-2.61	107.70	110.73
4	B	776	NAG	C2-N2-C7	2.25	126.22	122.94

All (5) chirality outliers are listed below:

Mol	Chain	Res	Type	Atom
5	A	775	GCU	C1
5	B	775	GCU	C1
4	A	776	NAG	C1
6	B	777	GCD	C1
4	B	776	NAG	C1

There are no torsion outliers.

There are no ring outliers.

2 monomers are involved in 1 short contact:

Mol	Chain	Res	Type	Clashes	Symm-Clashes
3	A	5	ACT	1	0
5	A	775	GCU	1	0

5.7 Other polymers [i](#)

There are no such residues in this entry.

5.8 Polymer linkage issues [i](#)

There are no chain breaks in this entry.

6 Fit of model and data ⓘ

6.1 Protein, DNA and RNA chains ⓘ

In the following table, the column labelled ‘#RSRZ> 2’ contains the number (and percentage) of RSRZ outliers, followed by percent RSRZ outliers for the chain as percentile scores relative to all X-ray entries and entries of similar resolution. The OWAB column contains the minimum, median, 95th percentile and maximum values of the occupancy-weighted average B-factor per residue. The column labelled ‘Q< 0.9’ lists the number of (and percentage) of residues with an average occupancy less than 0.9.

Mol	Chain	Analysed	<RSRZ>	#RSRZ>2	OWAB(Å ²)	Q<0.9
1	A	743/749 (99%)	0.70	88 (11%) 5 6	47, 50, 50, 53	0
1	B	743/749 (99%)	0.85	98 (13%) 4 5	47, 50, 50, 53	0
All	All	1486/1498 (99%)	0.78	186 (12%) 4 6	47, 50, 50, 53	0

All (186) RSRZ outliers are listed below:

Mol	Chain	Res	Type	RSRZ
1	B	36	VAL	8.5
1	B	87	ALA	8.0
1	B	470	GLY	7.7
1	B	471	SER	6.4
1	B	37	ASP	6.4
1	B	34	LYS	5.6
1	B	473	HIS	5.3
1	B	92	VAL	5.3
1	B	91	GLU	5.2
1	B	139	THR	5.1
1	B	472	ASP	5.0
1	B	35	ASP	5.0
1	A	38	GLY	5.0
1	B	641	PRO	4.9
1	B	474	THR	4.8
1	B	39	VAL	4.7
1	B	643	THR	4.6
1	B	141	LYS	4.5
1	A	91	GLU	4.5
1	B	140	PHE	4.4
1	A	258	LEU	4.3
1	B	32	VAL	4.2
1	A	30	ASP	4.2
1	A	37	ASP	4.1

Continued on next page...

Continued from previous page...

Mol	Chain	Res	Type	RSRZ
1	B	84	TRP	4.1
1	B	89	ILE	4.0
1	B	680	LYS	4.0
1	B	142	PRO	4.0
1	B	267	PHE	3.9
1	B	642	GLY	3.9
1	B	324	LEU	3.9
1	A	36	VAL	3.8
1	B	90	PRO	3.8
1	B	553	ALA	3.8
1	A	545	PHE	3.7
1	B	133	ASP	3.6
1	A	74	TRP	3.6
1	A	251	TYR	3.6
1	A	472	ASP	3.6
1	A	526	LEU	3.6
1	B	38	GLY	3.6
1	B	640	LYS	3.5
1	B	86	PRO	3.5
1	A	383	ALA	3.5
1	A	382	ILE	3.5
1	B	97	PHE	3.5
1	B	71	LYS	3.4
1	B	88	ASP	3.4
1	A	380	TRP	3.4
1	B	178	LYS	3.4
1	B	266	LEU	3.4
1	A	471	SER	3.3
1	A	35	ASP	3.3
1	A	413	ALA	3.3
1	B	262	PHE	3.3
1	A	396	MET	3.3
1	A	34	LYS	3.3
1	B	31	VAL	3.3
1	A	288	ILE	3.2
1	B	33	TRP	3.2
1	A	66	ASN	3.2
1	B	66	ASN	3.1
1	A	292	ALA	3.1
1	B	74	TRP	3.1
1	B	459	PRO	3.1
1	B	41	MET	3.1

Continued on next page...

Continued from previous page...

Mol	Chain	Res	Type	RSRZ
1	B	476	PHE	3.1
1	A	87	ALA	3.1
1	A	524	THR	3.1
1	A	416	ILE	3.0
1	B	138	ALA	3.0
1	B	288	ILE	3.0
1	A	46	LYS	3.0
1	A	394	ALA	3.0
1	B	351	PHE	3.0
1	B	633	THR	3.0
1	B	93	LYS	3.0
1	B	572	PHE	2.9
1	A	306	GLY	2.9
1	A	414	PHE	2.9
1	B	380	TRP	2.9
1	A	305	GLY	2.9
1	A	393	ILE	2.9
1	A	398	VAL	2.9
1	B	270	TRP	2.9
1	B	85	LYS	2.9
1	B	478	ALA	2.8
1	B	269	LEU	2.8
1	A	304	ALA	2.8
1	A	378	PHE	2.8
1	A	262	PHE	2.8
1	B	263	THR	2.8
1	B	68	PRO	2.8
1	B	497	LYS	2.8
1	A	373	TYR	2.8
1	A	546	LEU	2.8
1	B	624	LYS	2.8
1	A	33	TRP	2.8
1	A	92	VAL	2.7
1	A	608	ALA	2.7
1	A	31	VAL	2.7
1	B	439	PRO	2.7
1	B	554	LYS	2.7
1	A	559	MET	2.7
1	B	314	LYS	2.7
1	A	381	MET	2.7
1	A	141	LYS	2.7
1	B	435	GLY	2.7

Continued on next page...

Continued from previous page...

Mol	Chain	Res	Type	RSRZ
1	B	477	ALA	2.7
1	A	290	TYR	2.7
1	A	560	ILE	2.7
1	B	475	ASP	2.7
1	A	561	VAL	2.6
1	B	137	THR	2.6
1	A	578	LEU	2.6
1	B	246	TYR	2.6
1	B	313	LYS	2.6
1	B	258	LEU	2.6
1	B	171	GLU	2.6
1	A	525	TYR	2.5
1	A	257	ALA	2.5
1	A	63	ASN	2.5
1	A	324	LEU	2.5
1	A	303	LEU	2.5
1	A	254	GLY	2.4
1	B	632	GLY	2.4
1	A	39	VAL	2.4
1	A	397	LYS	2.4
1	A	553	ALA	2.4
1	B	467	GLY	2.4
1	A	670	VAL	2.4
1	A	426	ALA	2.4
1	A	291	ASP	2.4
1	B	325	ALA	2.4
1	B	482	GLY	2.4
1	B	552	ASP	2.3
1	A	547	PHE	2.3
1	B	251	TYR	2.3
1	B	289	LEU	2.3
1	A	656	ILE	2.3
1	A	200	VAL	2.3
1	B	321	PRO	2.3
1	A	370	LEU	2.3
1	B	457	TYR	2.3
1	B	637	ASN	2.3
1	A	334	LEU	2.2
1	A	47	THR	2.2
1	B	69	LYS	2.2
1	A	263	THR	2.2
1	A	142	PRO	2.2

Continued on next page...

Continued from previous page...

Mol	Chain	Res	Type	RSRZ
1	B	466	SER	2.2
1	A	133	ASP	2.2
1	B	46	LYS	2.2
1	A	671	ILE	2.2
1	B	63	ASN	2.2
1	A	266	LEU	2.2
1	B	489	GLY	2.2
1	B	364	LYS	2.2
1	A	293	ILE	2.2
1	B	629	TRP	2.2
1	A	321	PRO	2.2
1	B	322	ALA	2.2
1	B	571	ASP	2.2
1	B	690	ASP	2.2
1	A	424	ILE	2.1
1	A	548	LEU	2.1
1	A	371	SER	2.1
1	B	30	ASP	2.1
1	A	294	TYR	2.1
1	A	415	GLN	2.1
1	A	71	LYS	2.1
1	A	591	ILE	2.1
1	B	432	SER	2.1
1	A	668	LEU	2.1
1	A	220	TYR	2.1
1	A	40	SER	2.1
1	B	260	VAL	2.0
1	B	462	THR	2.0
1	A	267	PHE	2.0
1	A	412	GLY	2.0
1	A	528	GLY	2.0
1	B	623	GLY	2.0
1	A	318	TYR	2.0
1	B	191	TYR	2.0
1	A	320	MET	2.0
1	B	159	ILE	2.0

6.2 Non-standard residues in protein, DNA, RNA chains ⓘ

There are no non-standard protein/DNA/RNA residues in this entry.

6.3 Carbohydrates [i](#)

There are no carbohydrates in this entry.

6.4 Ligands [i](#)

In the following table, the Atoms column lists the number of modelled atoms in the group and the number defined in the chemical component dictionary. LLDF column lists the quality of electron density of the group with respect to its neighbouring residues in protein, DNA or RNA chains. The B-factors column lists the minimum, median, 95th percentile and maximum values of B factors of atoms in the group. The column labelled 'Q< 0.9' lists the number of atoms with occupancy less than 0.9.

Mol	Type	Chain	Res	Atoms	RSCC	RSR	LLDF	B-factors(Å ²)	Q<0.9
3	ACT	A	773	4/4	0.90	0.20	3.10	64,64,64,64	0
5	GCU	B	775	12/13	0.85	0.19	1.90	64,64,65,65	0
3	ACT	B	773	4/4	0.82	0.24	1.83	67,67,67,67	0
4	NAG	B	776	14/15	0.73	0.23	1.24	76,77,79,80	0
4	NAG	A	776	14/15	0.79	0.17	0.41	62,64,67,67	0
4	NAG	B	774	15/15	0.86	0.14	-0.56	58,60,61,62	0
4	NAG	A	774	15/15	0.94	0.12	-1.05	49,49,50,51	0
5	GCU	A	775	12/13	0.90	0.13	-1.38	53,54,55,55	0
3	ACT	A	3	4/4	0.91	0.10	-2.70	61,61,61,61	0
2	ZN	A	1	1/1	1.00	0.09	-3.04	42,42,42,42	0
2	ZN	B	2	1/1	0.98	0.06	-3.28	55,55,55,55	0
6	GCD	B	777	11/12	0.79	0.22	-	97,97,97,97	0
3	ACT	A	4	4/4	0.79	0.16	-	70,70,70,70	0
3	ACT	A	5	4/4	0.91	0.14	-	58,58,58,58	0
6	GCD	A	777	11/12	0.81	0.17	-	88,89,89,89	0

6.5 Other polymers [i](#)

There are no such residues in this entry.