



Full wwPDB X-ray Structure Validation Report ⓘ

Feb 14, 2017 – 11:40 am GMT

PDB ID : 2EAR
Title : P21 crystal of the SR CA2+-ATPase with bound TG
Authors : Takahashi, M.; Kondou, Y.; Toyoshima, C.
Deposited on : 2007-02-02
Resolution : 3.10 Å(reported)

This is a Full wwPDB X-ray Structure Validation Report for a publicly released PDB entry.

We welcome your comments at validation@mail.wwpdb.org

A user guide is available at

<http://wwpdb.org/validation/2016/XrayValidationReportHelp>

with specific help available everywhere you see the ⓘ symbol.

The following versions of software and data (see [references ⓘ](#)) were used in the production of this report:

MolProbity : 4.02b-467
Mogul : 1.7.2 (RC1), CSD as538be (2017)
Xtriage (Phenix) : NOT EXECUTED
EDS : NOT EXECUTED
Percentile statistics : 20161228.v01 (using entries in the PDB archive December 28th 2016)
Ideal geometry (proteins) : Engh & Huber (2001)
Ideal geometry (DNA, RNA) : Parkinson et al. (1996)
Validation Pipeline (wwPDB-VP) : recalc28949

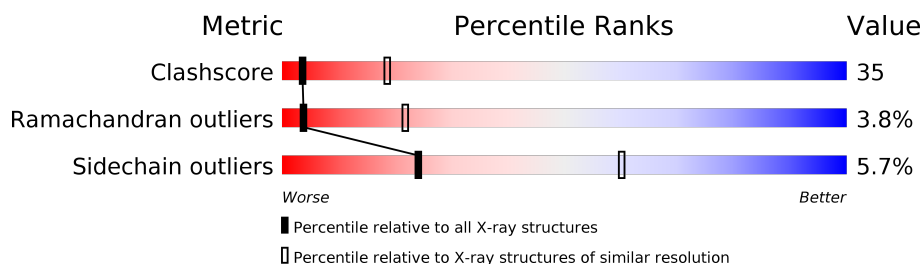
1 Overall quality at a glance

The following experimental techniques were used to determine the structure:

X-RAY DIFFRACTION

The reported resolution of this entry is 3.10 Å.

Percentile scores (ranging between 0-100) for global validation metrics of the entry are shown in the following graphic. The table shows the number of entries on which the scores are based.



Metric	Whole archive (#Entries)	Similar resolution (#Entries, resolution range(Å))
Clashscore	112137	1099 (3.12-3.08)
Ramachandran outliers	110173	1057 (3.12-3.08)
Sidechain outliers	110143	1057 (3.12-3.08)

The table below summarises the geometric issues observed across the polymeric chains and their fit to the electron density. The red, orange, yellow and green segments on the lower bar indicate the fraction of residues that contain outliers for ≥ 3 , 2, 1 and 0 types of geometric quality criteria. A grey segment represents the fraction of residues that are not modelled. The numeric value for each fraction is indicated below the corresponding segment, with a dot representing fractions $\leq 5\%$. The upper red bar (where present) indicates the fraction of residues that have poor fit to the electron density. The numeric value is given above the bar.

Note EDS was not executed.

Mol	Chain	Length	Quality of chain
1	A	995	

2 Entry composition [i](#)

There are 2 unique types of molecules in this entry. The entry contains 7718 atoms, of which 0 are hydrogens and 0 are deuteriums.

In the tables below, the ZeroOcc column contains the number of atoms modelled with zero occupancy, the AltConf column contains the number of residues with at least one atom in alternate conformation and the Trace column contains the number of residues modelled with at most 2 atoms.

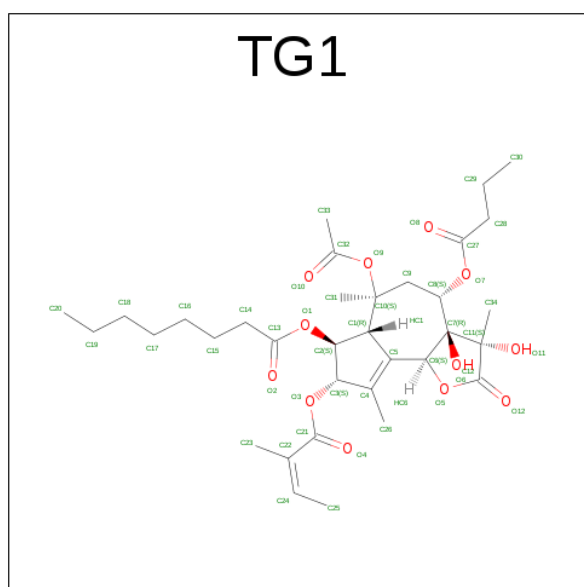
- Molecule 1 is a protein called Sarcoplasmic/endoplasmic reticulum calcium ATPase 1.

Mol	Chain	Residues	Atoms					ZeroOcc	AltConf	Trace
1	A	995	Total	C	N	O	S	0	0	0
			7672	4878	1287	1450	57			

There is a discrepancy between the modelled and reference sequences:

Chain	Residue	Modelled	Actual	Comment	Reference
A	994	GLY	-	SEE REMARK 999	UNP P04191

- Molecule 2 is OCTANOIC ACID [3S-[3ALPHA, 3ABETA, 4ALPHA, 6BETA, 6ABETA, 7BETA, 8ALPHA(Z), 9BALPHA]]-6-(ACETYLOXY)-2,3,-3A,4,5,6,6A,7,8,9B-DECAHYDRO-3,3A-DIHYDROXY-3,6,9-TRIMETHYL-8-[(2-METHYL-1-OXO-2-BUTENYL)OXY]-2-OXO-4-(1-OXOBUTOXY)-AZULENO[4,5-B]FURAN-7-YL ESTER (three-letter code: TG1) (formula: C₃₄H₅₀O₁₂).



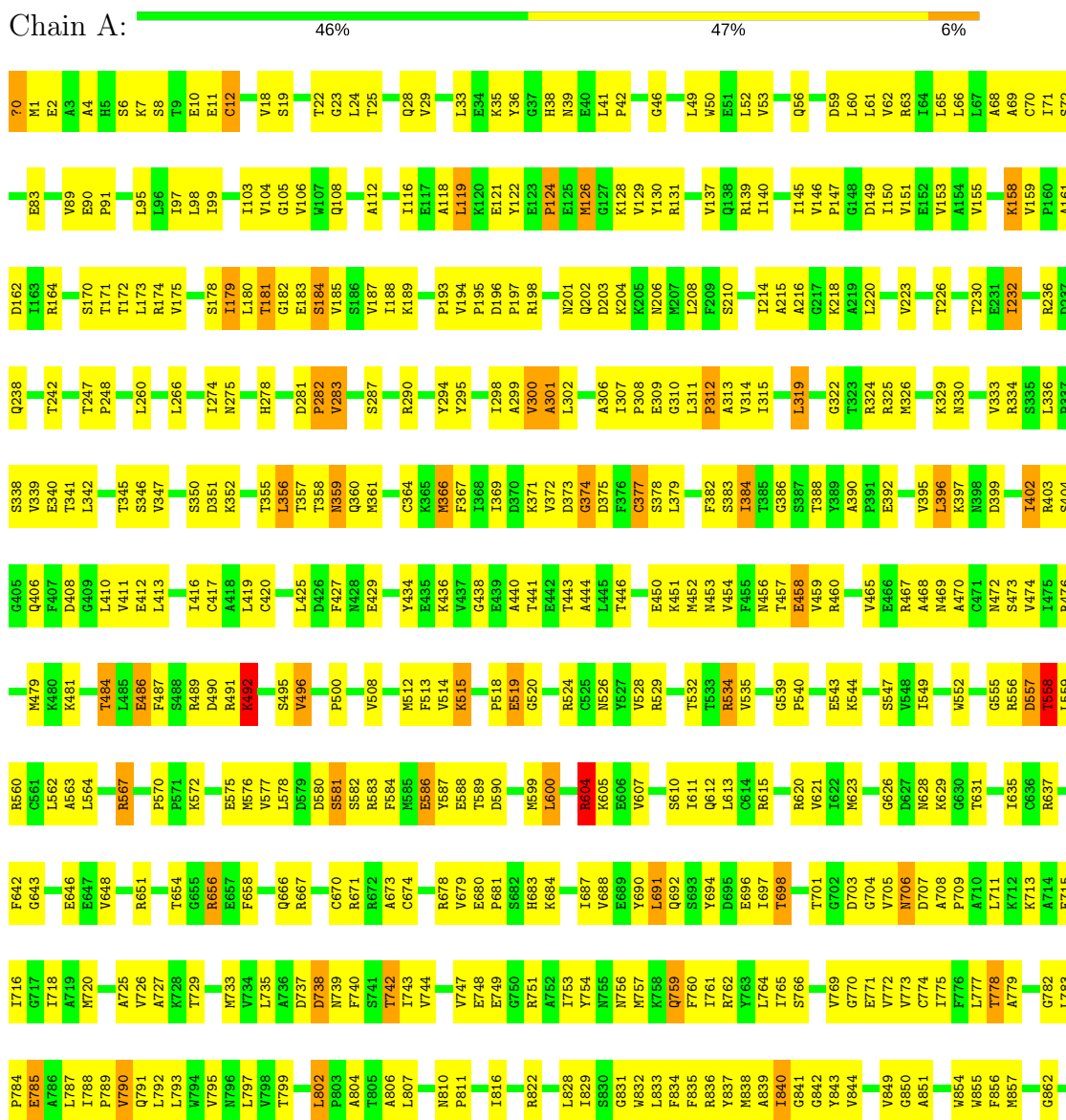
Mol	Chain	Residues	Atoms			ZeroOcc	AltConf
2	A	1	Total	C	O	0	0
			46	34	12		

3 Residue-property plots

These plots are drawn for all protein, RNA and DNA chains in the entry. The first graphic for a chain summarises the proportions of the various outlier classes displayed in the second graphic. The second graphic shows the sequence view annotated by issues in geometry and electron density. Residues are color-coded according to the number of geometric quality criteria for which they contain at least one outlier: green = 0, yellow = 1, orange = 2 and red = 3 or more. A red dot above a residue indicates a poor fit to the electron density ($RSRZ > 2$). Stretches of 2 or more consecutive residues without any outlier are shown as a green connector. Residues present in the sample, but not in the model, are shown in grey.

Note EDS was not executed.

- Molecule 1: Sarcoplasmic/endoplasmic reticulum calcium ATPase 1



V865	V866	V867	V868	V869	V870		F873	F874	F875		E878	D879	H880	P881	H882	F883	E884	G885		F891		P894	E895	E896	H897	H898	H899	A900	L901	S902	V903	L904	V905	V906	V907	E908	H909	C910	N911	A912	L913	N914	S915	L916		Q920	S921	L922	H923	H924	H925	P926	P927	H928	V929		L933	L934	G935
S936	I937	C938	L939	S940		H944	F945	L946	I947	L948	V949	V950	D951	P952	L953	P954	M955	I956	F957	K958	L959	K960	A961	L962	D963		Q966		I973	S974	L975	P976	V977	I978	G979	L980	D981	E982	L983	L984	K985	F986	L987	A988	R989	N990	Y991		G994										

4 Data and refinement statistics

Xtriage (Phenix) and EDS were not executed - this section is therefore incomplete.

Property	Value	Source
Space group	P 1 21 1	Depositor
Cell constants a, b, c, α , β , γ	62.85Å 95.94Å 154.49Å 90.00° 94.90° 90.00°	Depositor
Resolution (Å)	14.95 – 3.10	Depositor
% Data completeness (in resolution range)	99.5 (14.95-3.10)	Depositor
R_{merge}	0.06	Depositor
R_{sym}	(Not available)	Depositor
Refinement program	CNS 1.1	Depositor
R, R_{free}	0.235 , 0.284	Depositor
Estimated twinning fraction	No twinning to report.	Xtriage
Total number of atoms	7718	wwPDB-VP
Average B, all atoms (Å ²)	95.0	wwPDB-VP

5 Model quality

5.1 Standard geometry

Bond lengths and bond angles in the following residue types are not validated in this section: TG1, ACE

The Z score for a bond length (or angle) is the number of standard deviations the observed value is removed from the expected value. A bond length (or angle) with $|Z| > 5$ is considered an outlier worth inspection. RMSZ is the root-mean-square of all Z scores of the bond lengths (or angles).

Mol	Chain	Bond lengths		Bond angles	
		RMSZ	$\# Z > 5$	RMSZ	$\# Z > 5$
1	A	0.51	1/7811 (0.0%)	0.68	4/10593 (0.0%)

Chiral center outliers are detected by calculating the chiral volume of a chiral center and verifying if the center is modelled as a planar moiety or with the opposite hand. A planarity outlier is detected by checking planarity of atoms in a peptide group, atoms in a mainchain group or atoms of a sidechain that are expected to be planar.

Mol	Chain	#Chirality outliers	#Planarity outliers
1	A	0	5

All (1) bond length outliers are listed below:

Mol	Chain	Res	Type	Atoms	Z	Observed(Å)	Ideal(Å)
1	A	0	ACE	C-N	-23.10	0.81	1.34

All (4) bond angle outliers are listed below:

Mol	Chain	Res	Type	Atoms	Z	Observed(°)	Ideal(°)
1	A	0	ACE	O-C-N	-13.70	100.79	122.70
1	A	0	ACE	C-N-CA	13.55	155.59	121.70
1	A	567	ARG	NE-CZ-NH2	7.39	124.00	120.30
1	A	604	ARG	NE-CZ-NH2	6.98	123.79	120.30

There are no chirality outliers.

All (5) planarity outliers are listed below:

Mol	Chain	Res	Type	Group
1	A	301	ALA	Mainchain
1	A	302	LEU	Mainchain

Continued on next page...

Continued from previous page...

Mol	Chain	Res	Type	Group
1	A	558	THR	Mainchain
1	A	600	LEU	Mainchain
1	A	70	CYS	Mainchain

5.2 Too-close contacts [i](#)

In the following table, the Non-H and H(model) columns list the number of non-hydrogen atoms and hydrogen atoms in the chain respectively. The H(added) column lists the number of hydrogen atoms added and optimized by MolProbity. The Clashes column lists the number of clashes within the asymmetric unit, whereas Symm-Clashes lists symmetry related clashes.

Mol	Chain	Non-H	H(model)	H(added)	Clashes	Symm-Clashes
1	A	7672	0	7765	536	0
2	A	46	0	50	1	0
All	All	7718	0	7815	536	0

The all-atom clashscore is defined as the number of clashes found per 1000 atoms (including hydrogen atoms). The all-atom clashscore for this structure is 35.

All (536) close contacts within the same asymmetric unit are listed below, sorted by their clash magnitude.

Atom-1	Atom-2	Interatomic distance (Å)	Clash overlap (Å)
1:A:558:THR:HG21	1:A:635:ILE:HG12	1.20	1.11
1:A:0:ACE:CH3	1:A:1:MET:N	2.14	1.11
1:A:232:ILE:H	1:A:232:ILE:HD12	1.11	1.08
1:A:680:GLU:HB3	1:A:681:PRO:HD2	1.41	1.02
1:A:0:ACE:C	1:A:1:MET:CA	2.27	1.01
1:A:322:GLY:HA2	1:A:325:ARG:HH12	1.27	1.00
1:A:322:GLY:HA2	1:A:325:ARG:NH1	1.78	0.97
1:A:604:ARG:HB3	1:A:607:VAL:HG13	1.48	0.95
1:A:29:VAL:HG21	1:A:131:ARG:NH1	1.82	0.95
1:A:526:ASN:ND2	1:A:590:ASP:HA	1.84	0.92
1:A:526:ASN:HD22	1:A:590:ASP:HA	1.35	0.92
1:A:351:ASP:H	1:A:701:THR:HG21	1.32	0.92
1:A:90:GLU:HB3	1:A:91:PRO:HD3	1.55	0.88
1:A:345:THR:HA	1:A:697:ILE:HG22	1.56	0.88
1:A:898:THR:HA	1:A:959:LEU:HD22	1.56	0.88
1:A:671:ARG:HB3	1:A:694:TYR:CE1	2.08	0.88
1:A:416:ILE:HG23	1:A:513:PHE:HB3	1.56	0.87
1:A:558:THR:HG21	1:A:635:ILE:CG1	2.04	0.86

Continued on next page...

Continued from previous page...

Atom-1	Atom-2	Interatomic distance (Å)	Clash overlap (Å)
1:A:950:VAL:HG12	1:A:952:PRO:HD2	1.59	0.84
1:A:898:THR:HB	1:A:959:LEU:HA	1.59	0.84
1:A:41:LEU:HD21	1:A:119:LEU:HD12	1.60	0.83
1:A:558:THR:CG2	1:A:635:ILE:HG12	2.06	0.83
1:A:828:LEU:HD13	2:A:1003:TG1:H291	1.60	0.82
1:A:326:MET:HG2	1:A:749:GLU:HG2	1.61	0.82
1:A:950:VAL:O	1:A:954:PRO:HD2	1.78	0.81
1:A:775:ILE:HA	1:A:778:THR:HG22	1.62	0.81
1:A:922:LEU:HD23	1:A:927:PRO:CG	2.12	0.80
1:A:278:HIS:ND1	1:A:282:PRO:HG2	1.95	0.79
1:A:201:ASN:HA	1:A:204:LYS:HE2	1.64	0.78
1:A:715:GLU:C	1:A:716:ILE:HD12	2.04	0.78
1:A:799:THR:HG21	1:A:905:VAL:HG22	1.64	0.78
1:A:24:LEU:HD12	1:A:149:ASP:HB3	1.66	0.78
1:A:130:TYR:HE2	1:A:137:VAL:HG23	1.49	0.77
1:A:828:LEU:H	1:A:828:LEU:HD12	1.51	0.75
1:A:680:GLU:HB3	1:A:681:PRO:CD	2.15	0.75
1:A:412:GLU:OE1	1:A:529:ARG:HD2	1.86	0.75
1:A:95:LEU:HD23	1:A:95:LEU:O	1.87	0.75
1:A:319:LEU:HB3	1:A:336:LEU:HD12	1.69	0.75
1:A:29:VAL:HG21	1:A:131:ARG:HH11	1.52	0.74
1:A:519:GLU:HG2	1:A:520:GLY:H	1.51	0.74
1:A:984:LEU:O	1:A:987:ILE:HG22	1.87	0.74
1:A:345:THR:HA	1:A:697:ILE:CG2	2.17	0.74
1:A:232:ILE:N	1:A:232:ILE:HD12	1.96	0.74
1:A:49:LEU:HG	1:A:50:TRP:H	1.52	0.74
1:A:725:ALA:O	1:A:729:THR:HG23	1.87	0.74
1:A:764:LEU:O	1:A:764:LEU:HD23	1.88	0.73
1:A:351:ASP:OD2	1:A:701:THR:HG23	1.89	0.73
1:A:857:MET:HG2	1:A:866:THR:HB	1.69	0.73
1:A:281:ASP:HB2	1:A:282:PRO:HD3	1.68	0.73
1:A:326:MET:CE	1:A:333:VAL:HG21	2.19	0.72
1:A:425:LEU:HB3	1:A:469:ASN:HD21	1.52	0.72
1:A:754:TYR:HD1	1:A:757:MET:HE3	1.55	0.72
1:A:278:HIS:HD1	1:A:282:PRO:HG2	1.54	0.72
1:A:326:MET:HE1	1:A:333:VAL:HG21	1.71	0.72
1:A:287:SER:HA	1:A:290:ARG:HB3	1.72	0.71
1:A:637:ARG:HH11	1:A:637:ARG:HG2	1.55	0.71
1:A:515:LYS:O	1:A:515:LYS:HG3	1.91	0.70
1:A:922:LEU:HD23	1:A:927:PRO:HG2	1.72	0.70
1:A:586:GLU:HG3	1:A:587:TYR:H	1.57	0.70

Continued on next page...

Continued from previous page...

Atom-1	Atom-2	Interatomic distance (Å)	Clash overlap (Å)
1:A:586:GLU:O	1:A:589:THR:HG22	1.91	0.70
1:A:643:GLY:HA3	1:A:646:GLU:HG3	1.72	0.70
1:A:0:ACE:C	1:A:1:MET:H3	0.71	0.70
1:A:232:ILE:H	1:A:232:ILE:CD1	1.88	0.70
1:A:210:SER:O	1:A:232:ILE:HG12	1.92	0.70
1:A:715:GLU:HB3	1:A:716:ILE:HD12	1.74	0.69
1:A:802:LEU:HD12	1:A:936:SER:HB2	1.74	0.69
1:A:604:ARG:HB3	1:A:607:VAL:CG1	2.22	0.69
1:A:266:LEU:HD13	1:A:266:LEU:O	1.92	0.69
1:A:18:VAL:HG22	1:A:24:LEU:HD23	1.74	0.69
1:A:19:SER:HB3	1:A:22:THR:OG1	1.93	0.69
1:A:342:LEU:HD21	1:A:733:MET:CE	2.23	0.69
1:A:180:LEU:HD23	1:A:705:VAL:HG21	1.76	0.68
1:A:774:CYS:SG	1:A:787:LEU:HD12	2.34	0.68
1:A:188:ILE:HD12	1:A:188:ILE:N	2.08	0.67
1:A:922:LEU:HD23	1:A:927:PRO:HG3	1.75	0.67
1:A:188:ILE:H	1:A:188:ILE:HD12	1.60	0.67
1:A:468:ALA:C	1:A:469:ASN:HD22	1.99	0.67
1:A:586:GLU:HG3	1:A:587:TYR:N	2.09	0.67
1:A:308:PRO:HG2	1:A:765:ILE:HG22	1.76	0.67
1:A:880:HIS:H	1:A:881:PRO:HD2	1.59	0.66
1:A:180:LEU:HD23	1:A:705:VAL:CG2	2.25	0.66
1:A:170:SER:OG	1:A:218:LYS:N	2.28	0.66
1:A:680:GLU:HB2	1:A:683:HIS:CE1	2.31	0.66
1:A:425:LEU:HB3	1:A:469:ASN:ND2	2.11	0.66
1:A:238:GLN:O	1:A:242:THR:HG23	1.95	0.65
1:A:753:ILE:O	1:A:757:MET:HG3	1.97	0.65
1:A:322:GLY:CA	1:A:325:ARG:HH12	2.06	0.65
1:A:364:CYS:O	1:A:384:ILE:HG12	1.97	0.64
1:A:759:GLN:OE1	1:A:759:GLN:HA	1.97	0.64
1:A:948:LEU:HG	1:A:961:ALA:HA	1.80	0.64
1:A:375:ASP:O	1:A:540:PRO:HB3	1.97	0.64
1:A:351:ASP:N	1:A:701:THR:HG21	2.10	0.64
1:A:458:GLU:OE2	1:A:460:ARG:HG2	1.97	0.64
1:A:544:LYS:O	1:A:547:SER:HB3	1.98	0.64
1:A:946:LEU:O	1:A:953:LEU:HD12	1.98	0.64
1:A:692:GLN:C	1:A:694:TYR:H	2.01	0.64
1:A:743:ILE:O	1:A:747:VAL:HG23	1.98	0.64
1:A:911:ASN:HA	1:A:914:ASN:HD22	1.62	0.64
1:A:248:PRO:HG2	1:A:340:GLU:OE1	1.98	0.63
1:A:913:LEU:HD22	1:A:927:PRO:HB3	1.79	0.63

Continued on next page...

Continued from previous page...

Atom-1	Atom-2	Interatomic distance (Å)	Clash overlap (Å)
1:A:356:LEU:HD23	1:A:623:MET:HG3	1.81	0.63
1:A:496:VAL:O	1:A:496:VAL:HG13	1.99	0.63
1:A:324:ARG:HG3	1:A:325:ARG:N	2.14	0.62
1:A:427:PHE:HA	1:A:434:TYR:HA	1.81	0.62
1:A:903:VAL:HG13	1:A:974:SER:OG	1.99	0.62
1:A:928:TRP:HA	1:A:934:LEU:HD11	1.82	0.62
1:A:642:PHE:CD1	1:A:648:VAL:HG11	2.35	0.62
1:A:35:LYS:HD3	1:A:36:TYR:CZ	2.36	0.61
1:A:757:MET:HA	1:A:760:PHE:CE2	2.36	0.61
1:A:188:ILE:HD13	1:A:486:GLU:HG2	1.81	0.61
1:A:372:VAL:HA	1:A:377:CYS:HB2	1.81	0.61
1:A:299:ALA:C	1:A:301:ALA:H	2.04	0.61
1:A:403:ARG:HB3	1:A:406:GLN:HG3	1.81	0.61
1:A:567:ARG:HD3	1:A:570:PRO:HA	1.82	0.61
1:A:811:PRO:HG2	1:A:929:VAL:HG12	1.82	0.61
1:A:716:ILE:N	1:A:716:ILE:HD12	2.16	0.61
1:A:775:ILE:HA	1:A:778:THR:CG2	2.31	0.61
1:A:417:CYS:SG	1:A:564:LEU:HD21	2.41	0.61
1:A:540:PRO:O	1:A:543:GLU:HB2	2.01	0.61
1:A:338:SER:HA	1:A:341:THR:HG22	1.83	0.60
1:A:833:LEU:HD12	1:A:836:ARG:HE	1.67	0.60
1:A:436:LYS:HB3	1:A:443:THR:HG21	1.84	0.60
1:A:788:ILE:HG23	1:A:789:PRO:HD2	1.84	0.60
1:A:351:ASP:H	1:A:701:THR:CG2	2.09	0.59
1:A:556:ARG:HB3	1:A:556:ARG:NH1	2.18	0.59
1:A:491:ARG:NH1	1:A:588:GLU:OE2	2.36	0.59
1:A:281:ASP:O	1:A:283:VAL:HG13	2.03	0.59
1:A:518:PRO:HB3	1:A:549:ILE:HD13	1.85	0.59
1:A:687:ILE:HG22	1:A:691:LEU:CD2	2.32	0.59
1:A:23:GLY:HA3	1:A:130:TYR:O	2.03	0.59
1:A:637:ARG:NH1	1:A:637:ARG:HG2	2.17	0.58
1:A:911:ASN:HA	1:A:914:ASN:ND2	2.18	0.58
1:A:470:ALA:O	1:A:474:VAL:HG23	2.04	0.58
1:A:762:ARG:HD3	1:A:828:LEU:HB3	1.85	0.58
1:A:857:MET:HA	1:A:866:THR:HG22	1.84	0.58
1:A:491:ARG:HH12	1:A:588:GLU:CD	2.07	0.58
1:A:612:GLN:O	1:A:615:ARG:HB2	2.03	0.58
1:A:178:SER:HB3	1:A:184:SER:HA	1.85	0.58
1:A:90:GLU:HB2	1:A:790:VAL:CG2	2.34	0.58
1:A:33:LEU:HD21	1:A:38:HIS:CE1	2.39	0.58
1:A:739:ASN:HB3	1:A:742:THR:HG23	1.86	0.57

Continued on next page...

Continued from previous page...

Atom-1	Atom-2	Interatomic distance (Å)	Clash overlap (Å)
1:A:560:ARG:NH1	1:A:562:LEU:HD11	2.18	0.57
1:A:756:ASN:OD1	1:A:810:ASN:HB2	2.04	0.57
1:A:383:SER:HB3	1:A:396:LEU:CD1	2.34	0.57
1:A:153:VAL:HB	1:A:214:ILE:CD1	2.34	0.57
1:A:350:SER:HA	1:A:701:THR:CG2	2.34	0.57
1:A:25:THR:HG23	1:A:28:GLN:OE1	2.04	0.57
1:A:329:LYS:O	1:A:330:ASN:HB2	2.04	0.57
1:A:419:LEU:HD11	1:A:479:MET:HB2	1.86	0.57
1:A:791:GLN:O	1:A:795:VAL:HG23	2.05	0.57
1:A:629:LYS:HB2	1:A:654:THR:HG22	1.87	0.57
1:A:832:TRP:HZ2	1:A:987:ILE:HG21	1.69	0.57
1:A:882:HIS:NE2	1:A:885:GLY:HA3	2.20	0.57
1:A:61:LEU:HD21	1:A:260:LEU:HD23	1.86	0.57
1:A:875:GLN:NE2	1:A:875:GLN:H	2.03	0.57
1:A:926:PRO:O	1:A:929:VAL:HG23	2.05	0.57
1:A:52:LEU:HB3	1:A:106:VAL:HG23	1.86	0.56
1:A:153:VAL:HB	1:A:214:ILE:HD12	1.86	0.56
1:A:411:VAL:HA	1:A:454:VAL:HG11	1.87	0.56
1:A:129:VAL:O	1:A:130:TYR:HD2	1.89	0.56
1:A:188:ILE:CD1	1:A:486:GLU:HG2	2.35	0.56
1:A:65:LEU:CD2	1:A:307:ILE:HD12	2.36	0.56
1:A:766:SER:HA	1:A:769:VAL:HG23	1.88	0.56
1:A:161:ALA:HA	1:A:210:SER:HB2	1.87	0.56
1:A:973:ILE:O	1:A:973:ILE:HD13	2.06	0.56
1:A:18:VAL:HG22	1:A:24:LEU:CD2	2.36	0.56
1:A:982:GLU:O	1:A:986:PHE:HB2	2.06	0.56
1:A:920:GLN:O	1:A:985:LYS:HE2	2.06	0.56
1:A:311:LEU:C	1:A:313:ALA:H	2.09	0.55
1:A:162:ASP:OD2	1:A:230:THR:HB	2.06	0.55
1:A:879:ASP:HB3	1:A:882:HIS:O	2.06	0.55
1:A:388:THR:HG23	1:A:390:ALA:H	1.72	0.55
1:A:605:LYS:H	1:A:605:LYS:HD2	1.71	0.55
1:A:873:PHE:HZ	1:A:881:PRO:HG3	1.72	0.55
1:A:6:SER:HA	1:A:194:VAL:O	2.06	0.55
1:A:905:VAL:O	1:A:909:MET:HG2	2.07	0.55
1:A:490:ASP:OD2	1:A:491:ARG:N	2.40	0.55
1:A:558:THR:CG2	1:A:635:ILE:CG1	2.78	0.55
1:A:844:VAL:HB	1:A:907:ILE:HD12	1.89	0.55
1:A:963:ASP:HB3	1:A:966:GLN:HG2	1.88	0.55
1:A:355:THR:OG1	1:A:720:MET:HE2	2.07	0.54
1:A:757:MET:O	1:A:761:ILE:HG13	2.06	0.54

Continued on next page...

Continued from previous page...

Atom-1	Atom-2	Interatomic distance (Å)	Clash overlap (Å)
1:A:151:VAL:HG13	1:A:223:VAL:HG23	1.89	0.54
1:A:410:LEU:HD22	1:A:452:MET:CE	2.38	0.54
1:A:397:LYS:N	1:A:402:ILE:HD12	2.21	0.54
1:A:804:ALA:O	1:A:807:LEU:HB2	2.08	0.54
1:A:875:GLN:HE21	1:A:875:GLN:H	1.53	0.54
1:A:775:ILE:CA	1:A:778:THR:HG22	2.37	0.54
1:A:910:CYS:HB3	1:A:978:ILE:HD11	1.90	0.54
1:A:210:SER:HB3	1:A:232:ILE:CD1	2.38	0.54
1:A:679:VAL:HG22	1:A:683:HIS:HB2	1.90	0.54
1:A:122:TYR:HE1	1:A:726:VAL:CG2	2.21	0.54
1:A:715:GLU:HB3	1:A:716:ILE:CD1	2.36	0.53
1:A:795:VAL:HA	1:A:799:THR:HB	1.91	0.53
1:A:839:ALA:O	1:A:841:GLY:N	2.41	0.53
1:A:24:LEU:HG	1:A:149:ASP:HA	1.89	0.53
1:A:371:LYS:HG2	1:A:378:SER:OG	2.07	0.53
1:A:450:GLU:HG3	1:A:468:ALA:O	2.09	0.53
1:A:310:GLY:O	1:A:314:VAL:HG23	2.09	0.53
1:A:495:SER:HB3	1:A:514:VAL:HG22	1.89	0.53
1:A:979:GLY:O	1:A:983:ILE:HG12	2.09	0.53
1:A:783:LEU:C	1:A:785:GLU:H	2.12	0.53
1:A:175:VAL:HG11	1:A:208:LEU:HD22	1.91	0.53
1:A:275:ASN:N	1:A:275:ASN:HD22	2.06	0.53
1:A:735:LEU:HD22	1:A:742:THR:OG1	2.09	0.53
1:A:897:MET:O	1:A:899:MET:N	2.41	0.53
1:A:386:GLY:HA3	1:A:451:LYS:HZ3	1.74	0.53
1:A:626:GLY:O	1:A:678:ARG:HD3	2.07	0.53
1:A:481:LYS:HE3	1:A:496:VAL:HG21	1.90	0.52
1:A:126:MET:HG3	1:A:140:ILE:O	2.09	0.52
1:A:583:ARG:HH11	1:A:583:ARG:HG2	1.75	0.52
1:A:707:ASP:O	1:A:711:LEU:HG	2.10	0.52
1:A:984:LEU:C	1:A:987:ILE:HG22	2.30	0.52
1:A:122:TYR:HE1	1:A:726:VAL:HG21	1.75	0.52
1:A:441:THR:O	1:A:444:ALA:N	2.43	0.52
1:A:777:LEU:HB2	1:A:849:VAL:HG21	1.92	0.52
1:A:104:VAL:HG12	1:A:104:VAL:O	2.08	0.52
1:A:311:LEU:N	1:A:312:PRO:HD2	2.25	0.52
1:A:386:GLY:HA3	1:A:451:LYS:NZ	2.24	0.52
1:A:520:GLY:O	1:A:524:ARG:HG3	2.10	0.52
1:A:441:THR:HG23	1:A:599:MET:SD	2.50	0.52
1:A:90:GLU:HB2	1:A:790:VAL:HG21	1.92	0.52
1:A:59:ASP:O	1:A:62:VAL:HG12	2.10	0.52

Continued on next page...

Continued from previous page...

Atom-1	Atom-2	Interatomic distance (Å)	Clash overlap (Å)
1:A:901:LEU:HD23	1:A:902:SER:N	2.24	0.52
1:A:103:ILE:C	1:A:105:GLY:H	2.11	0.51
1:A:631:THR:O	1:A:635:ILE:HG13	2.11	0.51
1:A:97:ILE:CD1	1:A:797:LEU:HD21	2.41	0.51
1:A:429:GLU:OE1	1:A:465:VAL:HG21	2.11	0.51
1:A:658:PHE:CZ	1:A:666:GLN:HG2	2.45	0.51
1:A:761:ILE:O	1:A:765:ILE:HG12	2.10	0.51
1:A:0:ACE:O	1:A:1:MET:CA	2.52	0.51
1:A:294:TYR:O	1:A:298:ILE:HG23	2.11	0.51
1:A:703:ASP:HA	1:A:727:ALA:HB1	1.91	0.51
1:A:901:LEU:HD13	1:A:959:LEU:HD11	1.93	0.51
1:A:420:CYS:SG	1:A:515:LYS:HG2	2.51	0.51
1:A:56:GLN:HA	1:A:56:GLN:NE2	2.25	0.51
1:A:350:SER:HA	1:A:701:THR:HG21	1.92	0.51
1:A:897:MET:C	1:A:899:MET:H	2.14	0.51
1:A:0:ACE:H2	1:A:147:PRO:HB3	1.92	0.51
1:A:572:LYS:HB3	1:A:575:GLU:HG2	1.94	0.50
1:A:833:LEU:CD1	1:A:836:ARG:HE	2.24	0.50
1:A:183:GLU:O	1:A:185:VAL:N	2.44	0.50
1:A:518:PRO:HA	1:A:563:ALA:HB2	1.92	0.50
1:A:39:ASN:OD1	1:A:226:THR:HB	2.12	0.50
1:A:556:ARG:HB3	1:A:556:ARG:HH11	1.76	0.50
1:A:680:GLU:CB	1:A:681:PRO:CD	2.85	0.50
1:A:325:ARG:HB3	1:A:325:ARG:HH11	1.77	0.50
1:A:783:LEU:N	1:A:784:PRO:CD	2.75	0.50
1:A:410:LEU:HD22	1:A:452:MET:HE3	1.93	0.50
1:A:469:ASN:HD22	1:A:469:ASN:N	2.04	0.50
1:A:346:SER:OG	1:A:696:GLU:HG2	2.12	0.50
1:A:771:GLU:O	1:A:775:ILE:HG12	2.11	0.50
1:A:984:LEU:HA	1:A:987:ILE:HG22	1.94	0.50
1:A:369:ILE:HG13	1:A:528:VAL:HG13	1.93	0.50
1:A:479:MET:HE2	1:A:500:PRO:HA	1.93	0.50
1:A:179:ILE:O	1:A:705:VAL:HG22	2.12	0.50
1:A:402:ILE:HD13	1:A:402:ILE:H	1.77	0.49
1:A:678:ARG:NH1	1:A:678:ARG:HG3	2.26	0.49
1:A:557:ASP:O	1:A:558:THR:C	2.50	0.49
1:A:642:PHE:CE2	1:A:674:CYS:HB2	2.47	0.49
1:A:806:ALA:HB1	1:A:933:LEU:HA	1.94	0.49
1:A:90:GLU:HB3	1:A:91:PRO:CD	2.36	0.49
1:A:174:ARG:O	1:A:215:ALA:N	2.44	0.49
1:A:403:ARG:NE	1:A:406:GLN:HG3	2.27	0.49

Continued on next page...

Continued from previous page...

Atom-1	Atom-2	Interatomic distance (Å)	Clash overlap (Å)
1:A:765:ILE:HD11	1:A:829:ILE:HD11	1.93	0.49
1:A:306:ALA:HB2	1:A:772:VAL:HG21	1.94	0.49
1:A:795:VAL:HG13	1:A:799:THR:HG21	1.94	0.49
1:A:308:PRO:HB3	1:A:764:LEU:HD22	1.95	0.49
1:A:671:ARG:HB3	1:A:694:TYR:HE1	1.71	0.49
1:A:29:VAL:CG2	1:A:131:ARG:NH1	2.67	0.49
1:A:680:GLU:N	1:A:683:HIS:ND1	2.54	0.49
1:A:130:TYR:HE2	1:A:137:VAL:CG2	2.21	0.49
1:A:539:GLY:O	1:A:543:GLU:HG2	2.12	0.49
1:A:778:THR:HG23	1:A:778:THR:O	2.11	0.49
1:A:193:PRO:HA	1:A:206:ASN:ND2	2.28	0.49
1:A:413:LEU:HD22	1:A:564:LEU:HD23	1.95	0.49
1:A:926:PRO:C	1:A:928:TRP:H	2.16	0.49
1:A:97:ILE:HD11	1:A:797:LEU:HD21	1.94	0.49
1:A:18:VAL:HG11	1:A:150:ILE:HG23	1.94	0.48
1:A:811:PRO:HG2	1:A:929:VAL:CG1	2.42	0.48
1:A:481:LYS:HE3	1:A:496:VAL:CG2	2.43	0.48
1:A:395:VAL:O	1:A:402:ILE:HD13	2.12	0.48
1:A:771:GLU:OE1	1:A:792:LEU:HD22	2.12	0.48
1:A:366:MET:HG2	1:A:384:ILE:HD11	1.95	0.48
1:A:419:LEU:CD1	1:A:479:MET:HB2	2.43	0.48
1:A:651:ARG:O	1:A:673:ALA:HA	2.13	0.48
1:A:810:ASN:HD21	1:A:916:LEU:HD23	1.78	0.48
1:A:129:VAL:HG12	1:A:151:VAL:HG12	1.94	0.48
1:A:708:ALA:HB3	1:A:709:PRO:HD3	1.94	0.48
1:A:72:SER:C	1:A:91:PRO:HG3	2.34	0.48
1:A:137:VAL:O	1:A:137:VAL:HG13	2.13	0.48
1:A:584:PHE:HA	1:A:587:TYR:HD2	1.78	0.48
1:A:684:LYS:O	1:A:688:VAL:HG23	2.14	0.48
1:A:984:LEU:HA	1:A:987:ILE:CG2	2.44	0.48
1:A:1:MET:CE	1:A:7:LYS:HG3	2.43	0.48
1:A:610:SER:HB3	1:A:744:VAL:HG21	1.95	0.48
1:A:835:PHE:O	1:A:838:MET:HB3	2.14	0.48
1:A:89:VAL:HG12	1:A:790:VAL:HG11	1.96	0.48
1:A:956:ILE:HG13	1:A:957:PHE:HD1	1.77	0.48
1:A:956:ILE:HG13	1:A:957:PHE:CD1	2.49	0.48
1:A:986:PHE:CE2	1:A:989:ARG:CZ	2.97	0.48
1:A:469:ASN:ND2	1:A:469:ASN:N	2.59	0.47
1:A:916:LEU:HD21	1:A:933:LEU:HD22	1.96	0.47
1:A:308:PRO:C	1:A:310:GLY:H	2.18	0.47
1:A:626:GLY:O	1:A:678:ARG:CD	2.61	0.47

Continued on next page...

Continued from previous page...

Atom-1	Atom-2	Interatomic distance (Å)	Clash overlap (Å)
1:A:951:ASP:HB2	1:A:952:PRO:HD3	1.95	0.47
1:A:898:THR:HA	1:A:959:LEU:CD2	2.37	0.47
1:A:576:MET:HG2	1:A:587:TYR:CE1	2.50	0.47
1:A:615:ARG:HG2	1:A:615:ARG:NH1	2.30	0.47
1:A:766:SER:HG	1:A:837:TYR:HD1	1.61	0.47
1:A:862:GLY:O	1:A:865:VAL:HG22	2.15	0.47
1:A:922:LEU:N	1:A:922:LEU:HD12	2.29	0.47
1:A:35:LYS:HD3	1:A:36:TYR:CE2	2.50	0.47
1:A:419:LEU:O	1:A:496:VAL:HG21	2.14	0.47
1:A:679:VAL:HG22	1:A:683:HIS:CB	2.44	0.47
1:A:958:LYS:O	1:A:959:LEU:HD23	2.14	0.47
1:A:953:LEU:H	1:A:954:PRO:HD2	1.79	0.47
1:A:326:MET:HE3	1:A:333:VAL:HG21	1.93	0.47
1:A:396:LEU:O	1:A:396:LEU:HD12	2.15	0.47
1:A:897:MET:C	1:A:899:MET:N	2.68	0.47
1:A:578:LEU:HD23	1:A:578:LEU:N	2.30	0.47
1:A:754:TYR:CD1	1:A:757:MET:HE3	2.42	0.47
1:A:762:ARG:HD2	1:A:829:ILE:HG12	1.97	0.46
1:A:901:LEU:CD2	1:A:944:HIS:HE1	2.28	0.46
1:A:799:THR:CG2	1:A:905:VAL:HG22	2.40	0.46
1:A:129:VAL:C	1:A:130:TYR:HD2	2.19	0.46
1:A:367:PHE:HD1	1:A:552:TRP:CH2	2.34	0.46
1:A:671:ARG:HD2	1:A:694:TYR:OH	2.15	0.46
1:A:765:ILE:HD11	1:A:829:ILE:CD1	2.45	0.46
1:A:922:LEU:HB3	1:A:927:PRO:CG	2.45	0.46
1:A:924:ARG:C	1:A:926:PRO:HD3	2.35	0.46
1:A:147:PRO:HA	1:A:223:VAL:HG12	1.97	0.46
1:A:947:ILE:HA	1:A:953:LEU:HB3	1.96	0.46
1:A:29:VAL:HG11	1:A:131:ARG:HH12	1.81	0.46
1:A:342:LEU:HD21	1:A:733:MET:HE1	1.98	0.46
1:A:342:LEU:CD2	1:A:733:MET:CE	2.94	0.46
1:A:586:GLU:C	1:A:588:GLU:H	2.19	0.46
1:A:210:SER:HB3	1:A:232:ILE:HD11	1.98	0.46
1:A:367:PHE:C	1:A:367:PHE:CD2	2.90	0.46
1:A:356:LEU:CD2	1:A:623:MET:HG3	2.45	0.46
1:A:692:GLN:C	1:A:694:TYR:N	2.68	0.46
1:A:196:ASP:OD1	1:A:198:ARG:HG2	2.16	0.46
1:A:369:ILE:HG13	1:A:528:VAL:CG1	2.45	0.46
1:A:678:ARG:HH11	1:A:678:ARG:HG3	1.81	0.46
1:A:697:ILE:O	1:A:697:ILE:HG22	2.15	0.45
1:A:306:ALA:HB2	1:A:772:VAL:CG2	2.46	0.45

Continued on next page...

Continued from previous page...

Atom-1	Atom-2	Interatomic distance (Å)	Clash overlap (Å)
1:A:434:TYR:CE2	1:A:468:ALA:HB2	2.52	0.45
1:A:65:LEU:HD21	1:A:307:ILE:HD12	1.98	0.45
1:A:175:VAL:HG22	1:A:189:LYS:HE2	1.98	0.45
1:A:628:ASN:O	1:A:629:LYS:C	2.52	0.45
1:A:903:VAL:O	1:A:907:ILE:HG12	2.16	0.45
1:A:948:LEU:HA	1:A:954:PRO:HB3	1.98	0.45
1:A:679:VAL:CG2	1:A:683:HIS:CB	2.94	0.45
1:A:851:ALA:HB3	1:A:900:ALA:HA	1.99	0.45
1:A:921:SER:O	1:A:925:MET:HB2	2.17	0.45
1:A:315:ILE:O	1:A:319:LEU:HB2	2.16	0.45
1:A:667:ARG:NH2	1:A:694:TYR:CE2	2.83	0.45
1:A:718:ILE:HA	1:A:733:MET:O	2.17	0.45
1:A:7:LYS:O	1:A:164:ARG:NH1	2.45	0.45
1:A:36:TYR:CE1	1:A:147:PRO:HB2	2.51	0.45
1:A:193:PRO:O	1:A:195:PRO:HD3	2.17	0.45
1:A:452:MET:O	1:A:453:ASN:HB3	2.17	0.45
1:A:181:THR:HA	1:A:706:ASN:OD1	2.17	0.45
1:A:784:PRO:O	1:A:785:GLU:C	2.54	0.45
1:A:836:ARG:HA	1:A:984:LEU:HD13	1.99	0.45
1:A:791:GLN:NE2	1:A:901:LEU:HB2	2.30	0.45
1:A:629:LYS:HB2	1:A:654:THR:CG2	2.46	0.45
1:A:629:LYS:HD2	1:A:654:THR:HG23	1.97	0.45
1:A:766:SER:HA	1:A:769:VAL:CG2	2.47	0.45
1:A:795:VAL:HA	1:A:799:THR:CB	2.47	0.45
1:A:927:PRO:O	1:A:934:LEU:HD21	2.16	0.45
1:A:295:TYR:N	1:A:295:TYR:CD1	2.85	0.45
1:A:180:LEU:HA	1:A:705:VAL:CG2	2.46	0.45
1:A:611:ILE:HD12	1:A:621:VAL:HG11	1.98	0.45
1:A:844:VAL:CG1	1:A:907:ILE:HD12	2.47	0.45
1:A:905:VAL:HG12	1:A:905:VAL:O	2.16	0.45
1:A:951:ASP:HA	1:A:954:PRO:HG2	1.99	0.45
1:A:116:ILE:O	1:A:116:ILE:HG22	2.17	0.44
1:A:583:ARG:NH1	1:A:583:ARG:HG2	2.31	0.44
1:A:308:PRO:HB3	1:A:764:LEU:CD2	2.48	0.44
1:A:403:ARG:NH1	1:A:456:ASN:HD21	2.16	0.44
1:A:844:VAL:CB	1:A:907:ILE:HD12	2.46	0.44
1:A:10:GLU:O	1:A:12:CYS:N	2.50	0.44
1:A:10:GLU:O	1:A:11:GLU:C	2.55	0.44
1:A:159:VAL:O	1:A:210:SER:HA	2.18	0.44
1:A:402:ILE:HD13	1:A:402:ILE:N	2.31	0.44
1:A:188:ILE:H	1:A:188:ILE:CD1	2.28	0.44

Continued on next page...

Continued from previous page...

Atom-1	Atom-2	Interatomic distance (Å)	Clash overlap (Å)
1:A:358:THR:OG1	1:A:360:GLN:HG2	2.17	0.44
1:A:519:GLU:H	1:A:519:GLU:CD	2.21	0.44
1:A:713:LYS:HB2	1:A:713:LYS:NZ	2.33	0.44
1:A:762:ARG:O	1:A:766:SER:HB2	2.17	0.44
1:A:458:GLU:OE1	1:A:460:ARG:NE	2.51	0.44
1:A:612:GLN:O	1:A:615:ARG:N	2.46	0.44
1:A:388:THR:HG23	1:A:390:ALA:N	2.31	0.44
1:A:715:GLU:CB	1:A:716:ILE:HD12	2.45	0.44
1:A:90:GLU:CG	1:A:790:VAL:HG22	2.48	0.44
1:A:299:ALA:C	1:A:301:ALA:N	2.70	0.44
1:A:311:LEU:O	1:A:313:ALA:N	2.51	0.44
1:A:319:LEU:HG	1:A:339:VAL:HG21	2.00	0.44
1:A:457:THR:O	1:A:459:VAL:HG13	2.18	0.44
1:A:124:PRO:HD3	1:A:158:LYS:HG2	2.00	0.43
1:A:342:LEU:HD21	1:A:733:MET:HE2	2.00	0.43
1:A:356:LEU:HD12	1:A:356:LEU:HA	1.82	0.43
1:A:53:VAL:O	1:A:56:GLN:HB3	2.18	0.43
1:A:68:ALA:HA	1:A:300:VAL:HG12	2.00	0.43
1:A:90:GLU:HB2	1:A:790:VAL:HG22	1.98	0.43
1:A:139:ARG:HG2	1:A:139:ARG:HH11	1.83	0.43
1:A:369:ILE:HD13	1:A:379:LEU:HD22	1.99	0.43
1:A:586:GLU:CG	1:A:587:TYR:N	2.81	0.43
1:A:181:THR:OG1	1:A:182:GLY:N	2.52	0.43
1:A:322:GLY:O	1:A:326:MET:HG3	2.18	0.43
1:A:436:LYS:HE3	1:A:440:ALA:HB2	1.99	0.43
1:A:581:SER:O	1:A:583:ARG:N	2.51	0.43
1:A:789:PRO:O	1:A:793:LEU:HD23	2.18	0.43
1:A:839:ALA:C	1:A:841:GLY:N	2.72	0.43
1:A:897:MET:CE	1:A:958:LYS:HB3	2.48	0.43
1:A:66:LEU:HD13	1:A:98:LEU:HD13	2.01	0.43
1:A:774:CYS:SG	1:A:787:LEU:CD1	3.06	0.43
1:A:473:SER:HA	1:A:476:ARG:HH11	1.84	0.43
1:A:777:LEU:C	1:A:779:ALA:H	2.22	0.43
1:A:512:MET:HB2	1:A:567:ARG:CB	2.49	0.43
1:A:72:SER:OG	1:A:91:PRO:HG3	2.19	0.43
1:A:926:PRO:O	1:A:928:TRP:N	2.52	0.43
1:A:604:ARG:O	1:A:607:VAL:HG22	2.19	0.43
1:A:704:GLY:O	1:A:705:VAL:C	2.56	0.43
1:A:161:ALA:CA	1:A:210:SER:HB2	2.49	0.43
1:A:24:LEU:HD23	1:A:24:LEU:HA	1.81	0.43
1:A:203:ASP:OD2	1:A:489:ARG:HD3	2.19	0.43

Continued on next page...

Continued from previous page...

Atom-1	Atom-2	Interatomic distance (Å)	Clash overlap (Å)
1:A:69:ALA:C	1:A:71:ILE:H	2.21	0.43
1:A:939:LEU:HG	1:A:939:LEU:O	2.19	0.43
1:A:703:ASP:HA	1:A:727:ALA:CB	2.49	0.42
1:A:739:ASN:OD1	1:A:740:PHE:N	2.52	0.42
1:A:844:VAL:HG12	1:A:907:ILE:HD12	1.99	0.42
1:A:65:LEU:HD11	1:A:307:ILE:HG21	2.00	0.42
1:A:840:ILE:HG22	1:A:840:ILE:O	2.20	0.42
1:A:926:PRO:HB3	1:A:928:TRP:CE2	2.55	0.42
1:A:1:MET:HG2	1:A:4:ALA:HB2	2.02	0.42
1:A:347:VAL:HA	1:A:620:ARG:O	2.19	0.42
1:A:369:ILE:HD13	1:A:379:LEU:CD2	2.49	0.42
1:A:382:PHE:CD1	1:A:382:PHE:N	2.87	0.42
1:A:411:VAL:O	1:A:412:GLU:C	2.57	0.42
1:A:512:MET:HB2	1:A:567:ARG:HB3	2.00	0.42
1:A:60:LEU:O	1:A:63:ARG:N	2.50	0.42
1:A:770:GLY:HA2	1:A:841:GLY:O	2.20	0.42
1:A:850:GLY:O	1:A:854:TRP:HB2	2.18	0.42
1:A:922:LEU:HB3	1:A:927:PRO:HD3	1.99	0.42
1:A:10:GLU:C	1:A:12:CYS:N	2.72	0.42
1:A:174:ARG:HA	1:A:187:VAL:O	2.20	0.42
1:A:352:LYS:HG2	1:A:357:THR:HG23	2.00	0.42
1:A:390:ALA:C	1:A:392:GLU:H	2.23	0.42
1:A:145:ILE:HG22	1:A:146:VAL:N	2.35	0.42
1:A:508:VAL:HG12	1:A:508:VAL:O	2.19	0.42
1:A:783:LEU:HG	1:A:783:LEU:O	2.19	0.42
1:A:901:LEU:C	1:A:901:LEU:HD23	2.39	0.42
1:A:916:LEU:HB3	1:A:925:MET:CE	2.50	0.42
1:A:683:HIS:O	1:A:687:ILE:HG13	2.19	0.42
1:A:118:ALA:O	1:A:121:GLU:HB3	2.20	0.42
1:A:130:TYR:CE2	1:A:137:VAL:HG23	2.40	0.42
1:A:210:SER:O	1:A:232:ILE:CG1	2.65	0.42
1:A:586:GLU:C	1:A:588:GLU:N	2.73	0.42
1:A:737:ASP:N	1:A:737:ASP:OD1	2.50	0.42
1:A:933:LEU:O	1:A:937:ILE:HG13	2.19	0.42
1:A:173:LEU:HD12	1:A:216:ALA:O	2.20	0.42
1:A:347:VAL:HB	1:A:698:THR:HG23	2.02	0.42
1:A:42:PRO:HG2	1:A:236:ARG:CZ	2.49	0.42
1:A:487:PHE:CE1	1:A:492:LYS:C	2.93	0.42
1:A:577:VAL:HB	1:A:580:ASP:OD2	2.20	0.42
1:A:334:ARG:NH1	1:A:729:THR:HA	2.35	0.42
1:A:612:GLN:HA	1:A:615:ARG:HD2	2.01	0.42

Continued on next page...

Continued from previous page...

Atom-1	Atom-2	Interatomic distance (Å)	Clash overlap (Å)
1:A:656:ARG:NE	1:A:656:ARG:HA	2.34	0.42
1:A:716:ILE:N	1:A:716:ILE:CD1	2.82	0.42
1:A:748:GLU:O	1:A:751:ARG:HB3	2.20	0.42
1:A:870:LEU:HD22	1:A:891:PHE:CZ	2.55	0.42
1:A:760:PHE:HB3	1:A:807:LEU:HB2	2.02	0.42
1:A:831:GLY:O	1:A:834:PHE:HB3	2.19	0.42
1:A:840:ILE:HD13	1:A:980:LEU:HD23	2.02	0.42
1:A:373:ASP:O	1:A:374:GLY:C	2.59	0.41
1:A:373:ASP:O	1:A:375:ASP:N	2.53	0.41
1:A:534:ARG:HG2	1:A:535:VAL:N	2.33	0.41
1:A:572:LYS:CB	1:A:575:GLU:HG2	2.50	0.41
1:A:839:ALA:O	1:A:842:GLY:N	2.50	0.41
1:A:8:SER:O	1:A:12:CYS:HB2	2.20	0.41
1:A:934:LEU:HD23	1:A:937:ILE:HD12	2.02	0.41
1:A:195:PRO:O	1:A:197:PRO:HD3	2.20	0.41
1:A:0:ACE:O	1:A:1:MET:N	1.60	0.41
1:A:274:ILE:HA	1:A:274:ILE:HD13	1.93	0.41
1:A:436:LYS:HE2	1:A:438:GLY:O	2.20	0.41
1:A:456:ASN:O	1:A:457:THR:C	2.59	0.41
1:A:484:THR:HB	1:A:496:VAL:HG23	2.02	0.41
1:A:704:GLY:H	1:A:727:ALA:HB2	1.86	0.41
1:A:720:MET:HB3	1:A:738:ASP:HB3	2.03	0.41
1:A:984:LEU:CA	1:A:987:ILE:HG22	2.50	0.41
1:A:359:ASN:HA	1:A:359:ASN:HD22	1.57	0.41
1:A:470:ALA:O	1:A:473:SER:OG	2.36	0.41
1:A:473:SER:HA	1:A:476:ARG:NH1	2.35	0.41
1:A:607:VAL:O	1:A:611:ILE:HG12	2.21	0.41
1:A:762:ARG:NH1	1:A:833:LEU:CD2	2.83	0.41
1:A:783:LEU:O	1:A:785:GLU:N	2.50	0.41
1:A:897:MET:HE3	1:A:958:LYS:HB3	2.02	0.41
1:A:106:VAL:O	1:A:106:VAL:HG22	2.21	0.41
1:A:358:THR:CB	1:A:360:GLN:HG2	2.51	0.41
1:A:557:ASP:O	1:A:559:LEU:HG	2.19	0.41
1:A:83:GLU:CD	1:A:83:GLU:H	2.24	0.41
1:A:937:ILE:O	1:A:940:SER:HB3	2.21	0.41
1:A:171:THR:HG22	1:A:172:THR:HG23	2.03	0.41
1:A:487:PHE:HE1	1:A:492:LYS:C	2.24	0.41
1:A:519:GLU:HG2	1:A:520:GLY:N	2.27	0.41
1:A:621:VAL:HG21	1:A:740:PHE:CZ	2.56	0.41
1:A:146:VAL:O	1:A:147:PRO:C	2.59	0.41
1:A:179:ILE:HG23	1:A:180:LEU:N	2.36	0.41

Continued on next page...

Continued from previous page...

Atom-1	Atom-2	Interatomic distance (Å)	Clash overlap (Å)
1:A:446:THR:HG23	1:A:472:ASN:ND2	2.36	0.41
1:A:770:GLY:O	1:A:773:VAL:N	2.54	0.41
1:A:372:VAL:O	1:A:373:ASP:HB2	2.21	0.41
1:A:373:ASP:CG	1:A:374:GLY:N	2.74	0.41
1:A:708:ALA:N	1:A:709:PRO:CD	2.84	0.41
1:A:769:VAL:O	1:A:773:VAL:HG23	2.21	0.41
1:A:248:PRO:HG2	1:A:340:GLU:CD	2.41	0.40
1:A:338:SER:O	1:A:341:THR:HG22	2.21	0.40
1:A:408:ASP:O	1:A:411:VAL:HB	2.22	0.40
1:A:119:LEU:HD22	1:A:119:LEU:HA	1.95	0.40
1:A:202:GLN:OE1	1:A:489:ARG:CZ	2.69	0.40
1:A:765:ILE:O	1:A:769:VAL:HG23	2.20	0.40
1:A:843:TYR:OH	1:A:976:PRO:HG2	2.21	0.40
1:A:361:MET:HA	1:A:600:LEU:O	2.21	0.40
1:A:739:ASN:HB3	1:A:742:THR:CG2	2.51	0.40
1:A:782:GLY:C	1:A:784:PRO:HD2	2.42	0.40
1:A:137:VAL:HG22	1:A:137:VAL:O	2.20	0.40
1:A:308:PRO:O	1:A:310:GLY:N	2.55	0.40
1:A:788:ILE:O	1:A:791:GLN:HB3	2.21	0.40
1:A:99:ILE:O	1:A:103:ILE:HG13	2.21	0.40
1:A:22:THR:OG1	1:A:23:GLY:N	2.54	0.40
1:A:670:CYS:HG	1:A:690:TYR:HD2	1.69	0.40
1:A:122:TYR:CE1	1:A:726:VAL:HG21	2.53	0.40
1:A:855:TRP:CE3	1:A:855:TRP:HA	2.57	0.40
1:A:986:PHE:CE2	1:A:989:ARG:NH2	2.89	0.40
1:A:832:TRP:CZ2	1:A:987:ILE:HG21	2.53	0.40

There are no symmetry-related clashes.

5.3 Torsion angles

5.3.1 Protein backbone

In the following table, the Percentiles column shows the percent Ramachandran outliers of the chain as a percentile score with respect to all X-ray entries followed by that with respect to entries of similar resolution.

The Analysed column shows the number of residues for which the backbone conformation was analysed, and the total number of residues.

Mol	Chain	Analysed	Favoured	Allowed	Outliers	Percentiles	
1	A	993/995 (100%)	786 (79%)	169 (17%)	38 (4%)	4	22

All (38) Ramachandran outliers are listed below:

Mol	Chain	Res	Type
1	A	883	PHE
1	A	2	GLU
1	A	155	VAL
1	A	184	SER
1	A	496	VAL
1	A	582	SER
1	A	822	ARG
1	A	840	ILE
1	A	856	PHE
1	A	898	THR
1	A	961	ALA
1	A	300	VAL
1	A	309	GLU
1	A	399	ASP
1	A	492	LYS
1	A	519	GLU
1	A	558	THR
1	A	581	SER
1	A	785	GLU
1	A	895	GLU
1	A	46	GLY
1	A	404	SER
1	A	927	PRO
1	A	112	ALA
1	A	282	PRO
1	A	312	PRO
1	A	374	GLY
1	A	778	THR
1	A	880	HIS
1	A	283	VAL
1	A	894	PRO
1	A	950	VAL
1	A	953	LEU
1	A	981	ASP
1	A	179	ILE
1	A	951	ASP
1	A	124	PRO
1	A	555	GLY

5.3.2 Protein sidechains ⓘ

In the following table, the Percentiles column shows the percent sidechain outliers of the chain as a percentile score with respect to all X-ray entries followed by that with respect to entries of similar resolution.

The Analysed column shows the number of residues for which the sidechain conformation was analysed, and the total number of residues.

Mol	Chain	Analysed	Rotameric	Outliers	Percentiles	
1	A	840/840 (100%)	792 (94%)	48 (6%)	24	60

All (48) residues with a non-rotameric sidechain are listed below:

Mol	Chain	Res	Type
1	A	12	CYS
1	A	108	GLN
1	A	119	LEU
1	A	126	MET
1	A	128	LYS
1	A	158	LYS
1	A	181	THR
1	A	220	LEU
1	A	232	ILE
1	A	247	THR
1	A	319	LEU
1	A	356	LEU
1	A	359	ASN
1	A	366	MET
1	A	377	CYS
1	A	384	ILE
1	A	396	LEU
1	A	402	ILE
1	A	458	GLU
1	A	467	ARG
1	A	484	THR
1	A	486	GLU
1	A	492	LYS
1	A	515	LYS
1	A	532	THR
1	A	534	ARG
1	A	557	ASP
1	A	586	GLU
1	A	604	ARG
1	A	613	LEU

Continued on next page...

Continued from previous page...

Mol	Chain	Res	Type
1	A	656	ARG
1	A	691	LEU
1	A	698	THR
1	A	706	ASN
1	A	738	ASP
1	A	742	THR
1	A	759	GLN
1	A	790	VAL
1	A	802	LEU
1	A	816	ILE
1	A	868	HIS
1	A	875	GLN
1	A	878	GLU
1	A	901	LEU
1	A	973	ILE
1	A	975	LEU
1	A	986	PHE
1	A	991	TYR

Some sidechains can be flipped to improve hydrogen bonding and reduce clashes. All (17) such sidechains are listed below:

Mol	Chain	Res	Type
1	A	38	HIS
1	A	56	GLN
1	A	101	ASN
1	A	250	GLN
1	A	275	ASN
1	A	359	ASN
1	A	461	ASN
1	A	469	ASN
1	A	526	ASN
1	A	645	ASN
1	A	706	ASN
1	A	768	ASN
1	A	791	GLN
1	A	875	GLN
1	A	914	ASN
1	A	920	GLN
1	A	944	HIS

5.3.3 RNA ⓘ

There are no RNA molecules in this entry.

5.4 Non-standard residues in protein, DNA, RNA chains ⓘ

There are no non-standard protein/DNA/RNA residues in this entry.

5.5 Carbohydrates ⓘ

There are no carbohydrates in this entry.

5.6 Ligand geometry ⓘ

1 ligand is modelled in this entry.

In the following table, the Counts columns list the number of bonds (or angles) for which Mogul statistics could be retrieved, the number of bonds (or angles) that are observed in the model and the number of bonds (or angles) that are defined in the chemical component dictionary. The Link column lists molecule types, if any, to which the group is linked. The Z score for a bond length (or angle) is the number of standard deviations the observed value is removed from the expected value. A bond length (or angle) with $|Z| > 2$ is considered an outlier worth inspection. RMSZ is the root-mean-square of all Z scores of the bond lengths (or angles).

Mol	Type	Chain	Res	Link	Bond lengths			Bond angles		
					Counts	RMSZ	$\# Z > 2$	Counts	RMSZ	$\# Z > 2$
2	TG1	A	1003	-	43,48,48	2.50	14 (32%)	47,72,72	2.06	11 (23%)

In the following table, the Chirals column lists the number of chiral outliers, the number of chiral centers analysed, the number of these observed in the model and the number defined in the chemical component dictionary. Similar counts are reported in the Torsion and Rings columns. '-' means no outliers of that kind were identified.

Mol	Type	Chain	Res	Link	Chirals	Torsions	Rings
2	TG1	A	1003	-	-	0/33/99/99	0/3/3/3

All (14) bond length outliers are listed below:

Mol	Chain	Res	Type	Atoms	Z	Observed(Å)	Ideal(Å)
2	A	1003	TG1	O5-C6	-2.38	1.42	1.46
2	A	1003	TG1	C11-C7	2.02	1.57	1.55
2	A	1003	TG1	O7-C27	2.03	1.40	1.34
2	A	1003	TG1	O3-C3	2.08	1.48	1.44

Continued on next page...

Continued from previous page...

Mol	Chain	Res	Type	Atoms	Z	Observed(Å)	Ideal(Å)
2	A	1003	TG1	C2-C3	2.17	1.57	1.53
2	A	1003	TG1	O7-C8	2.82	1.51	1.46
2	A	1003	TG1	C1-C5	2.83	1.56	1.51
2	A	1003	TG1	C9-C10	2.95	1.59	1.54
2	A	1003	TG1	C21-C22	3.07	1.61	1.50
2	A	1003	TG1	C7-C8	3.17	1.57	1.53
2	A	1003	TG1	C9-C8	3.99	1.56	1.52
2	A	1003	TG1	O1-C13	4.52	1.47	1.34
2	A	1003	TG1	C1-C2	6.70	1.65	1.54
2	A	1003	TG1	O4-C21	9.77	1.42	1.21

All (11) bond angle outliers are listed below:

Mol	Chain	Res	Type	Atoms	Z	Observed(°)	Ideal(°)
2	A	1003	TG1	O12-C12-C11	-3.88	124.59	128.28
2	A	1003	TG1	O9-C10-C31	-3.77	92.75	107.88
2	A	1003	TG1	O11-C11-C12	-3.32	96.14	105.94
2	A	1003	TG1	C23-C22-C21	-2.29	110.09	116.01
2	A	1003	TG1	C23-C22-C24	-2.16	113.89	123.38
2	A	1003	TG1	O5-C12-O12	2.37	124.91	121.63
2	A	1003	TG1	C24-C22-C21	3.50	135.78	120.74
2	A	1003	TG1	O7-C8-C9	4.07	116.04	107.30
2	A	1003	TG1	C2-O1-C13	4.47	125.23	117.62
2	A	1003	TG1	C7-C6-C5	4.81	127.34	114.92
2	A	1003	TG1	C10-O9-C32	6.10	137.21	121.83

There are no chirality outliers.

There are no torsion outliers.

There are no ring outliers.

1 monomer is involved in 1 short contact:

Mol	Chain	Res	Type	Clashes	Symm-Clashes
2	A	1003	TG1	1	0

5.7 Other polymers ⓘ

There are no such residues in this entry.

5.8 Polymer linkage issues ⓘ

There are no chain breaks in this entry.

6 Fit of model and data

6.1 Protein, DNA and RNA chains

EDS was not executed - this section is therefore empty.

6.2 Non-standard residues in protein, DNA, RNA chains

EDS was not executed - this section is therefore empty.

6.3 Carbohydrates

EDS was not executed - this section is therefore empty.

6.4 Ligands

EDS was not executed - this section is therefore empty.

6.5 Other polymers

EDS was not executed - this section is therefore empty.