



Full wwPDB X-ray Structure Validation Report ⓘ

Feb 13, 2017 – 12:49 pm GMT

PDB ID : 1EB9
Title : STRUCTURE DETERMINANTS OF SUBSTRATE SPECIFICITY OF HYDROXYNITRILE LYASE FROM MANIHOT ESCULENTA
Authors : Lauble, H.; Miehlisch, B.; Foerster, S.; Kobler, C.; Wajant, H.; Effenberger, F.
Deposited on : 2001-07-24
Resolution : 2.10 Å(reported)

This is a Full wwPDB X-ray Structure Validation Report for a publicly released PDB entry.

We welcome your comments at validation@mail.wwpdb.org

A user guide is available at

<http://wwpdb.org/validation/2016/XrayValidationReportHelp>

with specific help available everywhere you see the ⓘ symbol.

The following versions of software and data (see [references ⓘ](#)) were used in the production of this report:

MolProbity : 4.02b-467
Mogul : 1.7.2 (RC1), CSD as538be (2017)
Xtriage (Phenix) : **NOT EXECUTED**
EDS : **NOT EXECUTED**
Percentile statistics : 20161228.v01 (using entries in the PDB archive December 28th 2016)
Ideal geometry (proteins) : Engh & Huber (2001)
Ideal geometry (DNA, RNA) : Parkinson et al. (1996)
Validation Pipeline (wwPDB-VP) : recalc28949

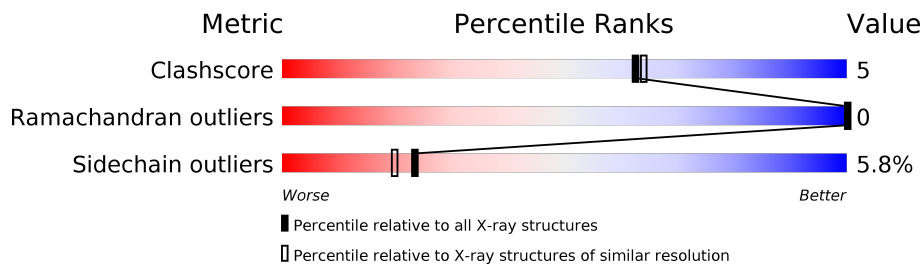
1 Overall quality at a glance

The following experimental techniques were used to determine the structure:

X-RAY DIFFRACTION

The reported resolution of this entry is 2.10 Å.

Percentile scores (ranging between 0-100) for global validation metrics of the entry are shown in the following graphic. The table shows the number of entries on which the scores are based.



Metric	Whole archive (#Entries)	Similar resolution (#Entries, resolution range(Å))
Clashscore	112137	4788 (2.10-2.10)
Ramachandran outliers	110173	4740 (2.10-2.10)
Sidechain outliers	110143	4741 (2.10-2.10)

The table below summarises the geometric issues observed across the polymeric chains and their fit to the electron density. The red, orange, yellow and green segments on the lower bar indicate the fraction of residues that contain outliers for ≥ 3 , 2, 1 and 0 types of geometric quality criteria. A grey segment represents the fraction of residues that are not modelled. The numeric value for each fraction is indicated below the corresponding segment, with a dot representing fractions $\leq 5\%$. The upper red bar (where present) indicates the fraction of residues that have poor fit to the electron density. The numeric value is given above the bar.

Note EDS was not executed.

Mol	Chain	Length	Quality of chain
1	A	262	 81% 15% .
1	B	262	 84% 13% ...

2 Entry composition [i](#)

There are 3 unique types of molecules in this entry. The entry contains 4467 atoms, of which 0 are hydrogens and 0 are deuteriums.

In the tables below, the ZeroOcc column contains the number of atoms modelled with zero occupancy, the AltConf column contains the number of residues with at least one atom in alternate conformation and the Trace column contains the number of residues modelled with at most 2 atoms.

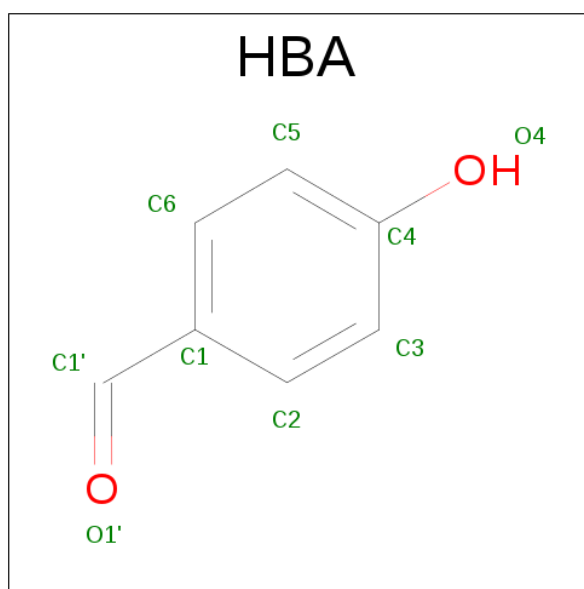
- Molecule 1 is a protein called HYDROXYNITRILE LYASE.

Mol	Chain	Residues	Atoms					ZeroOcc	AltConf	Trace
1	A	262	Total	C	N	O	S	0	0	0
			2095	1351	348	388	8			
1	B	258	Total	C	N	O	S	0	0	0
			2065	1331	343	383	8			

There are 2 discrepancies between the modelled and reference sequences:

Chain	Residue	Modelled	Actual	Comment	Reference
A	128	ALA	TRP	ENGINEERED MUTATION	UNP P52705
B	128	ALA	TRP	ENGINEERED MUTATION	UNP P52705

- Molecule 2 is P-HYDROXYBENZALDEHYDE (three-letter code: HBA) (formula: $C_7H_6O_2$).



Mol	Chain	Residues	Atoms			ZeroOcc	AltConf
2	A	1	Total	C	O	0	0
			9	7	2		

Continued on next page...

Continued from previous page...

Mol	Chain	Residues	Atoms			ZeroOcc	AltConf
2	A	1	Total	C	O	0	0
			9	7	2		
2	B	1	Total	C	O	0	0
			9	7	2		
2	B	1	Total	C	O	0	0
			9	7	2		

- Molecule 3 is water.

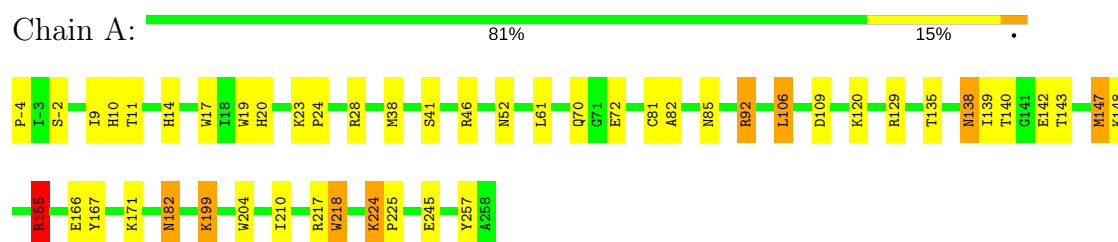
Mol	Chain	Residues	Atoms		ZeroOcc	AltConf
3	A	132	Total	O	0	0
			132	132		
3	B	139	Total	O	0	0
			139	139		

3 Residue-property plots [i](#)

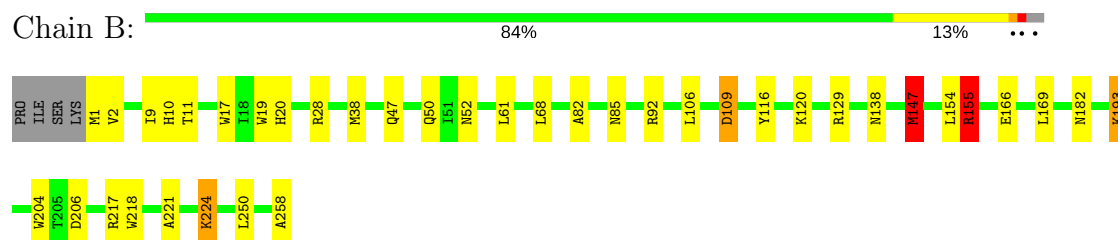
These plots are drawn for all protein, RNA and DNA chains in the entry. The first graphic for a chain summarises the proportions of the various outlier classes displayed in the second graphic. The second graphic shows the sequence view annotated by issues in geometry and electron density. Residues are color-coded according to the number of geometric quality criteria for which they contain at least one outlier: green = 0, yellow = 1, orange = 2 and red = 3 or more. A red dot above a residue indicates a poor fit to the electron density ($RSRZ > 2$). Stretches of 2 or more consecutive residues without any outlier are shown as a green connector. Residues present in the sample, but not in the model, are shown in grey.

Note EDS was not executed.

• Molecule 1: HYDROXYNITRILE LYASE



• Molecule 1: HYDROXYNITRILE LYASE



4 Data and refinement statistics

Xtriage (Phenix) and EDS were not executed - this section is therefore incomplete.

Property	Value	Source
Space group	P 41 21 2	Depositor
Cell constants a, b, c, α , β , γ	106.34Å 106.34Å 188.84Å 90.00° 90.00° 90.00°	Depositor
Resolution (Å)	8.00 – 2.10	Depositor
% Data completeness (in resolution range)	97.1 (8.00-2.10)	Depositor
R_{merge}	0.05	Depositor
R_{sym}	(Not available)	Depositor
Refinement program	X-PLOR 3.851	Depositor
R, R_{free}	0.197 , 0.244	Depositor
Estimated twinning fraction	No twinning to report.	Xtriage
Total number of atoms	4467	wwPDB-VP
Average B, all atoms (Å ²)	28.0	wwPDB-VP

5 Model quality ⓘ

5.1 Standard geometry ⓘ

Bond lengths and bond angles in the following residue types are not validated in this section: HBA

The Z score for a bond length (or angle) is the number of standard deviations the observed value is removed from the expected value. A bond length (or angle) with $|Z| > 5$ is considered an outlier worth inspection. RMSZ is the root-mean-square of all Z scores of the bond lengths (or angles).

Mol	Chain	Bond lengths		Bond angles	
		RMSZ	# Z >5	RMSZ	# Z >5
1	A	0.85	0/2145	1.55	24/2905 (0.8%)
1	B	0.88	0/2114	1.44	28/2864 (1.0%)
All	All	0.86	0/4259	1.50	52/5769 (0.9%)

There are no bond length outliers.

All (52) bond angle outliers are listed below:

Mol	Chain	Res	Type	Atoms	Z	Observed(°)	Ideal(°)
1	A	155	ARG	NE-CZ-NH2	-20.00	110.30	120.30
1	A	155	ARG	NE-CZ-NH1	18.77	129.68	120.30
1	B	155	ARG	NE-CZ-NH2	-12.99	113.81	120.30
1	A	129	ARG	NE-CZ-NH1	10.17	125.39	120.30
1	A	92	ARG	NE-CZ-NH2	-10.06	115.27	120.30
1	B	217	ARG	NE-CZ-NH2	-9.72	115.44	120.30
1	A	129	ARG	NE-CZ-NH2	-9.52	115.54	120.30
1	A	19	TRP	CD1-CG-CD2	9.42	113.83	106.30
1	A	217	ARG	NE-CZ-NH2	-9.35	115.63	120.30
1	B	19	TRP	CD1-CG-CD2	8.79	113.34	106.30
1	B	204	TRP	CD1-CG-CD2	8.30	112.94	106.30
1	A	19	TRP	CE2-CD2-CG	-8.17	100.76	107.30
1	A	218	TRP	CD1-CG-CD2	7.94	112.65	106.30
1	A	204	TRP	CD1-CG-CD2	7.69	112.45	106.30
1	A	28	ARG	NE-CZ-NH1	7.62	124.11	120.30
1	B	28	ARG	NE-CZ-NH1	7.50	124.05	120.30
1	B	155	ARG	NE-CZ-NH1	7.23	123.91	120.30
1	B	204	TRP	CE2-CD2-CG	-7.22	101.53	107.30
1	B	218	TRP	CD1-CG-CD2	7.16	112.03	106.30
1	B	19	TRP	CE2-CD2-CG	-7.15	101.58	107.30
1	B	206	ASP	CB-CG-OD1	7.09	124.68	118.30
1	A	218	TRP	CE2-CD2-CG	-7.08	101.64	107.30

Continued on next page...

Continued from previous page...

Mol	Chain	Res	Type	Atoms	Z	Observed(°)	Ideal(°)
1	A	19	TRP	CG-CD2-CE3	6.95	140.16	133.90
1	B	218	TRP	CE2-CD2-CG	-6.86	101.81	107.30
1	A	19	TRP	CB-CG-CD1	-6.83	118.12	127.00
1	A	17	TRP	CE2-CD2-CG	-6.63	102.00	107.30
1	A	204	TRP	CE2-CD2-CG	-6.59	102.02	107.30
1	B	218	TRP	CG-CD2-CE3	6.56	139.80	133.90
1	B	92	ARG	NE-CZ-NH1	6.52	123.56	120.30
1	A	17	TRP	CD1-CG-CD2	6.46	111.47	106.30
1	B	218	TRP	CB-CG-CD1	-6.35	118.74	127.00
1	B	147	MET	CG-SD-CE	-6.25	90.20	100.20
1	B	206	ASP	CB-CG-OD2	-6.17	112.75	118.30
1	B	1	MET	CA-C-N	6.15	130.72	117.20
1	A	46	ARG	NE-CZ-NH1	6.14	123.37	120.30
1	B	17	TRP	CE2-CD2-CG	-5.96	102.53	107.30
1	A	147	MET	CA-CB-CG	5.88	123.30	113.30
1	A	218	TRP	CG-CD2-CE3	5.81	139.13	133.90
1	A	19	TRP	CG-CD1-NE1	-5.70	104.40	110.10
1	B	204	TRP	CG-CD2-CE3	5.67	139.01	133.90
1	B	19	TRP	CG-CD1-NE1	-5.59	104.50	110.10
1	B	193	LYS	CA-CB-CG	5.59	125.69	113.40
1	B	109	ASP	CB-CG-OD1	5.55	123.29	118.30
1	B	17	TRP	CD1-CG-CD2	5.49	110.69	106.30
1	B	204	TRP	CG-CD1-NE1	-5.43	104.67	110.10
1	A	28	ARG	NE-CZ-NH2	-5.39	117.60	120.30
1	B	129	ARG	NE-CZ-NH1	5.30	122.95	120.30
1	B	19	TRP	CG-CD2-CE3	5.29	138.66	133.90
1	A	218	TRP	CB-CG-CD1	-5.14	120.32	127.00
1	B	116	TYR	CB-CG-CD2	-5.13	117.92	121.00
1	A	109	ASP	CB-CG-OD1	5.11	122.90	118.30
1	B	19	TRP	CB-CG-CD1	-5.03	120.46	127.00

There are no chirality outliers.

There are no planarity outliers.

5.2 Too-close contacts ⓘ

In the following table, the Non-H and H(model) columns list the number of non-hydrogen atoms and hydrogen atoms in the chain respectively. The H(added) column lists the number of hydrogen atoms added and optimized by MolProbity. The Clashes column lists the number of clashes within the asymmetric unit, whereas Symm-Clashes lists symmetry related clashes.

Mol	Chain	Non-H	H(model)	H(added)	Clashes	Symm-Clashes
1	A	2095	0	2096	26	0
1	B	2065	0	2060	15	0
2	A	18	0	12	1	0
2	B	18	0	12	3	0
3	A	132	0	0	1	0
3	B	139	0	0	1	0
All	All	4467	0	4180	42	0

The all-atom clashscore is defined as the number of clashes found per 1000 atoms (including hydrogen atoms). The all-atom clashscore for this structure is 5.

All (42) close contacts within the same asymmetric unit are listed below, sorted by their clash magnitude.

Atom-1	Atom-2	Interatomic distance (Å)	Clash overlap (Å)
1:B:10:HIS:HE1	1:B:38:MET:H	1.20	0.88
1:B:147:MET:CE	2:B:1259:HBA:H3	2.05	0.85
1:A:52:ASN:HD22	1:A:138:ASN:HB2	1.41	0.84
1:A:10:HIS:HE1	1:A:38:MET:H	1.23	0.82
1:B:147:MET:HE2	2:B:1259:HBA:H3	1.61	0.82
1:B:52:ASN:HD22	1:B:138:ASN:HB2	1.54	0.70
1:A:10:HIS:HD2	1:A:11:THR:O	1.77	0.66
1:B:82:ALA:HA	1:B:85:ASN:HD22	1.61	0.65
1:A:82:ALA:HA	1:A:85:ASN:HD22	1.61	0.64
1:B:10:HIS:HD2	1:B:11:THR:O	1.82	0.62
1:B:20:HIS:HE1	1:B:166:GLU:OE1	1.84	0.61
1:B:147:MET:HE1	2:B:1259:HBA:H3	1.83	0.58
1:A:199:LYS:HG2	1:A:257:TYR:CE1	2.40	0.57
1:A:120:LYS:HG3	1:A:218:TRP:CH2	2.40	0.56
1:A:155:ARG:HD3	1:A:155:ARG:O	2.07	0.56
1:B:109:ASP:HB2	3:B:2061:HOH:O	2.06	0.55
1:A:182:ASN:H	1:A:182:ASN:HD22	1.55	0.54
1:B:47:GLN:O	1:B:50:GLN:HG2	2.08	0.53
1:A:155:ARG:HD3	1:A:155:ARG:C	2.30	0.52
1:A:52:ASN:ND2	1:A:138:ASN:HB2	2.19	0.51
1:A:10:HIS:CE1	1:A:38:MET:H	2.15	0.50
1:A:20:HIS:HE1	1:A:166:GLU:OE1	1.94	0.49
1:A:139:ILE:HG23	1:A:140:THR:HG23	1.94	0.49
1:A:182:ASN:N	1:A:182:ASN:HD22	2.11	0.49
1:A:138:ASN:ND2	1:A:142:GLU:H	2.10	0.48
1:B:10:HIS:CE1	1:B:38:MET:H	2.12	0.47
1:B:2:VAL:HG11	1:B:258:ALA:HA	1.99	0.44
1:B:155:ARG:HD3	1:B:155:ARG:HA	1.66	0.44

Continued on next page...

Continued from previous page...

Atom-1	Atom-2	Interatomic distance (Å)	Clash overlap (Å)
1:A:224:LYS:HA	1:A:225:PRO:HD3	1.78	0.44
1:A:167:TYR:CZ	1:A:171:LYS:HD2	2.52	0.43
1:A:14:HIS:O	1:A:41:SER:HB3	2.18	0.43
1:A:224:LYS:HD2	1:A:225:PRO:O	2.19	0.43
1:A:245:GLU:HG3	3:A:2126:HOH:O	2.19	0.42
1:A:9:ILE:HD11	1:A:61:LEU:HD13	2.01	0.42
1:A:224:LYS:HE3	1:A:224:LYS:HB3	1.84	0.42
1:B:221:ALA:O	1:B:224:LYS:HE3	2.20	0.42
1:A:148:LYS:HD2	1:A:148:LYS:HA	1.87	0.42
1:B:9:ILE:HD11	1:B:61:LEU:HD13	2.02	0.42
1:A:138:ASN:ND2	1:A:140:THR:H	2.18	0.42
2:A:1259:HBA:C6	2:A:1260:HBA:C4	2.98	0.41
1:A:23:LYS:HB3	1:A:24:PRO:HD3	2.01	0.41
1:A:81:CYS:HA	1:A:106:LEU:HD22	2.04	0.40

There are no symmetry-related clashes.

5.3 Torsion angles [i](#)

5.3.1 Protein backbone [i](#)

In the following table, the Percentiles column shows the percent Ramachandran outliers of the chain as a percentile score with respect to all X-ray entries followed by that with respect to entries of similar resolution.

The Analysed column shows the number of residues for which the backbone conformation was analysed, and the total number of residues.

Mol	Chain	Analysed	Favoured	Allowed	Outliers	Percentiles	
1	A	260/262 (99%)	250 (96%)	10 (4%)	0	100	100
1	B	256/262 (98%)	245 (96%)	11 (4%)	0	100	100
All	All	516/524 (98%)	495 (96%)	21 (4%)	0	100	100

There are no Ramachandran outliers to report.

5.3.2 Protein sidechains [i](#)

In the following table, the Percentiles column shows the percent sidechain outliers of the chain as a percentile score with respect to all X-ray entries followed by that with respect to entries of similar resolution.

The Analysed column shows the number of residues for which the sidechain conformation was analysed, and the total number of residues.

Mol	Chain	Analysed	Rotameric	Outliers	Percentiles	
1	A	226/226 (100%)	211 (93%)	15 (7%)	19	16
1	B	222/226 (98%)	211 (95%)	11 (5%)	28	26
All	All	448/452 (99%)	422 (94%)	26 (6%)	23	20

All (26) residues with a non-rotameric sidechain are listed below:

Mol	Chain	Res	Type
1	A	-4	PRO
1	A	-2	SER
1	A	70	GLN
1	A	72	GLU
1	A	92	ARG
1	A	106	LEU
1	A	135	THR
1	A	138	ASN
1	A	143	THR
1	A	147	MET
1	A	155	ARG
1	A	182	ASN
1	A	199	LYS
1	A	210	ILE
1	A	224	LYS
1	B	68	LEU
1	B	106	LEU
1	B	120	LYS
1	B	147	MET
1	B	154	LEU
1	B	155	ARG
1	B	169	LEU
1	B	182	ASN
1	B	193	LYS
1	B	224	LYS
1	B	250	LEU

Some sidechains can be flipped to improve hydrogen bonding and reduce clashes. All (13) such sidechains are listed below:

Mol	Chain	Res	Type
1	A	10	HIS

Continued on next page...

Continued from previous page...

Mol	Chain	Res	Type
1	A	20	HIS
1	A	52	ASN
1	A	85	ASN
1	A	103	HIS
1	A	138	ASN
1	A	182	ASN
1	B	10	HIS
1	B	20	HIS
1	B	50	GLN
1	B	52	ASN
1	B	85	ASN
1	B	182	ASN

5.3.3 RNA [i](#)

There are no RNA molecules in this entry.

5.4 Non-standard residues in protein, DNA, RNA chains [i](#)

There are no non-standard protein/DNA/RNA residues in this entry.

5.5 Carbohydrates [i](#)

There are no carbohydrates in this entry.

5.6 Ligand geometry [i](#)

4 ligands are modelled in this entry.

In the following table, the Counts columns list the number of bonds (or angles) for which Mogul statistics could be retrieved, the number of bonds (or angles) that are observed in the model and the number of bonds (or angles) that are defined in the chemical component dictionary. The Link column lists molecule types, if any, to which the group is linked. The Z score for a bond length (or angle) is the number of standard deviations the observed value is removed from the expected value. A bond length (or angle) with $|Z| > 2$ is considered an outlier worth inspection. RMSZ is the root-mean-square of all Z scores of the bond lengths (or angles).

Mol	Type	Chain	Res	Link	Bond lengths			Bond angles		
					Counts	RMSZ	$\# Z > 2$	Counts	RMSZ	$\# Z > 2$
2	HBA	A	1259	-	9,9,9	1.24	1 (11%)	11,11,11	1.17	1 (9%)

Mol	Type	Chain	Res	Link	Bond lengths			Bond angles		
					Counts	RMSZ	# Z > 2	Counts	RMSZ	# Z > 2
2	HBA	A	1260	-	9,9,9	1.52	1 (11%)	11,11,11	0.87	0
2	HBA	B	1259	-	9,9,9	1.20	1 (11%)	11,11,11	1.95	5 (45%)
2	HBA	B	1260	-	9,9,9	1.31	1 (11%)	11,11,11	0.67	0

In the following table, the Chirals column lists the number of chiral outliers, the number of chiral centers analysed, the number of these observed in the model and the number defined in the chemical component dictionary. Similar counts are reported in the Torsion and Rings columns. '-' means no outliers of that kind were identified.

Mol	Type	Chain	Res	Link	Chirals	Torsions	Rings
2	HBA	A	1259	-	-	0/2/2/2	0/1/1/1
2	HBA	A	1260	-	-	0/2/2/2	0/1/1/1
2	HBA	B	1259	-	-	0/2/2/2	0/1/1/1
2	HBA	B	1260	-	-	0/2/2/2	0/1/1/1

All (4) bond length outliers are listed below:

Mol	Chain	Res	Type	Atoms	Z	Observed(Å)	Ideal(Å)
2	B	1259	HBA	C5-C4	2.04	1.42	1.38
2	A	1259	HBA	C3-C4	2.18	1.43	1.38
2	B	1260	HBA	C3-C4	2.36	1.43	1.38
2	A	1260	HBA	C3-C4	2.70	1.44	1.38

All (6) bond angle outliers are listed below:

Mol	Chain	Res	Type	Atoms	Z	Observed(°)	Ideal(°)
2	B	1259	HBA	C3-C2-C1	-2.42	118.11	121.28
2	B	1259	HBA	O4-C4-C3	-2.23	113.77	120.04
2	B	1259	HBA	C2-C1-C1'	-2.16	115.28	120.38
2	B	1259	HBA	C6-C5-C4	-2.15	117.43	119.88
2	A	1259	HBA	C6-C1-C2	2.69	121.67	117.63
2	B	1259	HBA	C6-C1-C2	3.40	122.74	117.63

There are no chirality outliers.

There are no torsion outliers.

There are no ring outliers.

3 monomers are involved in 4 short contacts:

Mol	Chain	Res	Type	Clashes	Symm-Clashes
2	A	1259	HBA	1	0

Continued on next page...

Continued from previous page...

Mol	Chain	Res	Type	Clashes	Symm-Clashes
2	A	1260	HBA	1	0
2	B	1259	HBA	3	0

5.7 Other polymers [i](#)

There are no such residues in this entry.

5.8 Polymer linkage issues [i](#)

There are no chain breaks in this entry.

6 Fit of model and data

6.1 Protein, DNA and RNA chains

EDS was not executed - this section is therefore empty.

6.2 Non-standard residues in protein, DNA, RNA chains

EDS was not executed - this section is therefore empty.

6.3 Carbohydrates

EDS was not executed - this section is therefore empty.

6.4 Ligands

EDS was not executed - this section is therefore empty.

6.5 Other polymers

EDS was not executed - this section is therefore empty.