



Full wwPDB X-ray Structure Validation Report ⓘ

Aug 29, 2017 – 08:30 PM EDT

PDB ID : 5EDK
Title : Crystal structure of prothrombin deletion mutant residues 146-167 (Form II).
Authors : Pozzi, N.; Chen, Z.; Di Cera, E.
Deposited on : unknown
Resolution : 3.21 Å(reported)

This is a Full wwPDB X-ray Structure Validation Report for a publicly released PDB entry.

We welcome your comments at validation@mail.wwpdb.org

A user guide is available at

<http://wwpdb.org/validation/2016/XrayValidationReportHelp>

with specific help available everywhere you see the ⓘ symbol.

The following versions of software and data (see [references ⓘ](#)) were used in the production of this report:

MolProbity : 4.02b-467
Mogul : 1.7.2 (RC1), CSD as538be (2017)
Xtriage (Phenix) : 1.9-1692
EDS : rb-20029824
Percentile statistics : 20161228.v01 (using entries in the PDB archive December 28th 2016)
Refmac : 5.8.0135
CCP4 : 6.5.0
Ideal geometry (proteins) : Engh & Huber (2001)
Ideal geometry (DNA, RNA) : Parkinson et al. (1996)
Validation Pipeline (wwPDB-VP) : rb-20029824

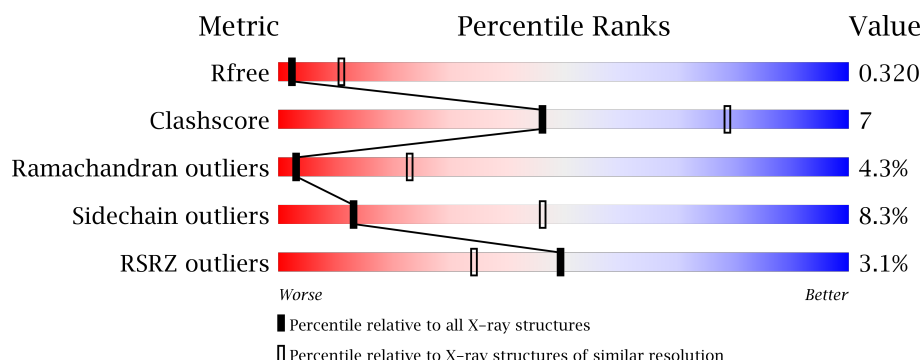
1 Overall quality at a glance

The following experimental techniques were used to determine the structure:

X-RAY DIFFRACTION

The reported resolution of this entry is 3.21 Å.

Percentile scores (ranging between 0-100) for global validation metrics of the entry are shown in the following graphic. The table shows the number of entries on which the scores are based.



Metric	Whole archive (#Entries)	Similar resolution (#Entries, resolution range(Å))
R_{free}	100719	1036 (3.24-3.20)
Clashscore	112137	1161 (3.24-3.20)
Ramachandran outliers	110173	1140 (3.24-3.20)
Sidechain outliers	110143	1139 (3.24-3.20)
RSRZ outliers	101464	1040 (3.24-3.20)

The table below summarises the geometric issues observed across the polymeric chains and their fit to the electron density. The red, orange, yellow and green segments on the lower bar indicate the fraction of residues that contain outliers for ≥ 3 , 2, 1 and 0 types of geometric quality criteria. A grey segment represents the fraction of residues that are not modelled. The numeric value for each fraction is indicated below the corresponding segment, with a dot representing fractions $\leq 5\%$. The upper red bar (where present) indicates the fraction of residues that have poor fit to the electron density. The numeric value is given above the bar.

Mol	Chain	Length	Quality of chain
1	A	560	<div> <div>3%</div> <div>70%</div> <div>21%</div> <div>6%</div> </div>

2 Entry composition

There are 3 unique types of molecules in this entry. The entry contains 4301 atoms, of which 0 are hydrogens and 0 are deuteriums.

In the tables below, the ZeroOcc column contains the number of atoms modelled with zero occupancy, the AltConf column contains the number of residues with at least one atom in alternate conformation and the Trace column contains the number of residues modelled with at most 2 atoms.

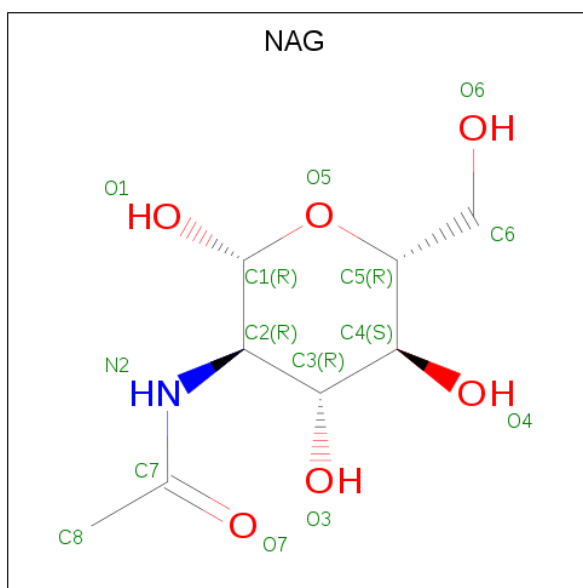
- Molecule 1 is a protein called Prothrombin.

Mol	Chain	Residues	Atoms					ZeroOcc	AltConf	Trace
1	A	528	Total	C	N	O	S	0	0	0
			4241	2647	737	825	32			

There are 26 discrepancies between the modelled and reference sequences:

Chain	Residue	Modelled	Actual	Comment	Reference
A	122	MET	THR	variant	UNP P00734
A	?	-	ASP	deletion	UNP P00734
A	?	-	GLN	deletion	UNP P00734
A	?	-	VAL	deletion	UNP P00734
A	?	-	THR	deletion	UNP P00734
A	?	-	VAL	deletion	UNP P00734
A	?	-	ALA	deletion	UNP P00734
A	?	-	MET	deletion	UNP P00734
A	?	-	THR	deletion	UNP P00734
A	?	-	PRO	deletion	UNP P00734
A	?	-	ARG	deletion	UNP P00734
A	?	-	SER	deletion	UNP P00734
A	?	-	GLU	deletion	UNP P00734
A	?	-	GLY	deletion	UNP P00734
A	?	-	SER	deletion	UNP P00734
A	?	-	SER	deletion	UNP P00734
A	?	-	VAL	deletion	UNP P00734
A	?	-	ASN	deletion	UNP P00734
A	?	-	LEU	deletion	UNP P00734
A	?	-	SER	deletion	UNP P00734
A	?	-	PRO	deletion	UNP P00734
A	?	-	PRO	deletion	UNP P00734
A	?	-	LEU	deletion	UNP P00734
A	558	TYR	-	expression tag	UNP P00734
A	559	LEU	-	expression tag	UNP P00734
A	560	GLU	-	expression tag	UNP P00734

- Molecule 2 is N-ACETYL-D-GLUCOSAMINE (three-letter code: NAG) (formula: $C_8H_{15}NO_6$).



Mol	Chain	Residues	Atoms				ZeroOcc	AltConf
2	A	1	Total	C	N	O	0	0
			14	8	1	5		
2	A	1	Total	C	N	O	0	0
			14	8	1	5		
2	A	1	Total	C	N	O	0	0
			14	8	1	5		
2	A	1	Total	C	N	O	0	0
			14	8	1	5		

- Molecule 3 is MAGNESIUM ION (three-letter code: MG) (formula: Mg).

Mol	Chain	Residues	Atoms		ZeroOcc	AltConf
3	A	4	Total	Mg	0	0
			4	4		

These plots are drawn for all protein, RNA and DNA chains in the entry. The first graphic for a chain summarises the proportions of the various outlier classes displayed in the second graphic. The second graphic shows the sequence view annotated by issues in geometry and electron density. Residues are color-coded according to the number of geometric quality criteria for which they contain at least one outlier: green = 0, yellow = 1, orange = 2 and red = 3 or more. A red dot above a residue indicates a poor fit to the electron density ($\text{RSRZ} > 2$). Stretches of 2 or more consecutive residues without any outlier are shown as a green connector. Residues present in the sample, but not in the model, are shown in grey.

Chain A:

3% 70% 21% 6%

4 Data and refinement statistics

Property	Value	Source
Space group	P 41 21 2	Depositor
Cell constants a, b, c, α , β , γ	84.19 Å 84.19 Å 346.43 Å 90.00° 90.00° 90.00°	Depositor
Resolution (Å)	86.61 – 3.21 34.53 – 3.21	Depositor EDS
% Data completeness (in resolution range)	92.2 (86.61-3.21) 92.3 (34.53-3.21)	Depositor EDS
R_{merge}	0.15	Depositor
R_{sym}	(Not available)	Depositor
$\langle I/\sigma(I) \rangle$ ¹	2.16 (at 3.25 Å)	Xtriage
Refinement program	REFMAC 5.8.0073	Depositor
R, R_{free}	0.291 , 0.323 0.292 , 0.320	Depositor DCC
R_{free} test set	1009 reflections (5.40%)	DCC
Wilson B-factor (Å ²)	79.5	Xtriage
Anisotropy	0.093	Xtriage
Bulk solvent k_{sol} (e/Å ³), B_{sol} (Å ²)	0.27 , 45.0	EDS
L-test for twinning ²	$\langle L \rangle = 0.36$, $\langle L^2 \rangle = 0.19$	Xtriage
Estimated twinning fraction	No twinning to report.	Xtriage
F_o, F_c correlation	0.83	EDS
Total number of atoms	4301	wwPDB-VP
Average B, all atoms (Å ²)	87.0	wwPDB-VP

Xtriage's analysis on translational NCS is as follows: *The largest off-origin peak in the Patterson function is 3.55% of the height of the origin peak. No significant pseudotranslation is detected.*

¹Intensities estimated from amplitudes.

²Theoretical values of $\langle |L| \rangle$, $\langle L^2 \rangle$ for acentric reflections are 0.5, 0.333 respectively for untwinned datasets, and 0.375, 0.2 for perfectly twinned datasets.

5 Model quality [i](#)

5.1 Standard geometry [i](#)

Bond lengths and bond angles in the following residue types are not validated in this section: MG, CGU, NAG

The Z score for a bond length (or angle) is the number of standard deviations the observed value is removed from the expected value. A bond length (or angle) with $|Z| > 5$ is considered an outlier worth inspection. RMSZ is the root-mean-square of all Z scores of the bond lengths (or angles).

Mol	Chain	Bond lengths		Bond angles	
		RMSZ	$\# Z > 5$	RMSZ	$\# Z > 5$
1	A	0.36	0/4218	0.58	0/5704

Chiral center outliers are detected by calculating the chiral volume of a chiral center and verifying if the center is modelled as a planar moiety or with the opposite hand. A planarity outlier is detected by checking planarity of atoms in a peptide group, atoms in a mainchain group or atoms of a sidechain that are expected to be planar.

Mol	Chain	#Chirality outliers	#Planarity outliers
1	A	0	3

There are no bond length outliers.

There are no bond angle outliers.

There are no chirality outliers.

All (3) planarity outliers are listed below:

Mol	Chain	Res	Type	Group
1	A	12	ASN	Peptide
1	A	24	TYR	Peptide
1	A	532	ASP	Peptide

5.2 Too-close contacts [i](#)

In the following table, the Non-H and H(model) columns list the number of non-hydrogen atoms and hydrogen atoms in the chain respectively. The H(added) column lists the number of hydrogen atoms added and optimized by MolProbity. The Clashes column lists the number of clashes within the asymmetric unit, whereas Symm-Clashes lists symmetry related clashes.

Mol	Chain	Non-H	H(model)	H(added)	Clashes	Symm-Clashes
1	A	4241	0	3982	60	0
2	A	56	0	51	0	0
3	A	4	0	0	0	0
All	All	4301	0	4033	60	0

The all-atom clashscore is defined as the number of clashes found per 1000 atoms (including hydrogen atoms). The all-atom clashscore for this structure is 7.

All (60) close contacts within the same asymmetric unit are listed below, sorted by their clash magnitude.

Atom-1	Atom-2	Interatomic distance (Å)	Clash overlap (Å)
1:A:314:VAL:HB	1:A:328:ALA:HB3	1.70	0.72
1:A:25:CGU:O	1:A:27:ALA:N	2.24	0.71
1:A:203:ASP:HA	1:A:546:LYS:HG3	1.75	0.69
1:A:293:SER:O	1:A:295:ILE:N	2.27	0.67
1:A:78:ASN:O	1:A:86:CYS:SG	2.54	0.66
1:A:13:LEU:O	1:A:14:CGU:C	2.48	0.59
1:A:337:LEU:HD12	1:A:519:GLN:HE22	1.68	0.57
1:A:84:ILE:HG21	1:A:128:THR:HB	1.87	0.56
1:A:360:ARG:HD3	1:A:363:LYS:HD2	1.87	0.56
1:A:48:GLU:O	1:A:51:ARG:HG2	2.05	0.56
1:A:165:HIS:NE2	1:A:386:PRO:O	2.40	0.55
1:A:35:THR:O	1:A:39:VAL:HG13	2.08	0.54
1:A:302:GLY:O	1:A:459:GLN:NE2	2.41	0.53
1:A:547:TRP:O	1:A:551:VAL:HG23	2.09	0.53
1:A:26:CGU:C	1:A:28:PHE:H	2.21	0.53
1:A:486:ALA:HB3	1:A:538:TYR:HE2	1.74	0.52
1:A:36:ALA:HA	1:A:39:VAL:HG22	1.93	0.51
1:A:386:PRO:HD3	1:A:547:TRP:CZ3	2.45	0.51
1:A:544:LEU:O	1:A:546:LYS:N	2.45	0.50
1:A:77:VAL:HG11	1:A:140:ILE:HD11	1.94	0.49
1:A:510:LYS:NZ	1:A:515:ASN:OD1	2.44	0.49
1:A:360:ARG:HD3	1:A:374:GLU:OE1	2.12	0.49
1:A:424:ALA:O	1:A:425:ALA:HB3	2.12	0.49
1:A:128:THR:OG1	1:A:133:VAL:O	2.28	0.49
1:A:324:LEU:C	1:A:324:LEU:HD23	2.34	0.48
1:A:324:LEU:HD23	1:A:325:LEU:N	2.29	0.47
1:A:174:SER:O	1:A:176:GLN:N	2.48	0.46
1:A:295:ILE:O	1:A:297:GLY:N	2.49	0.46
1:A:398:ILE:HD13	1:A:544:LEU:HD21	1.97	0.46
1:A:390:TRP:CZ3	1:A:391:ARG:HG2	2.50	0.45
1:A:100:ASN:OD1	1:A:103:THR:HG23	2.16	0.45

Continued on next page...

Continued from previous page...

Atom-1	Atom-2	Interatomic distance (Å)	Clash overlap (Å)
1:A:158:GLY:O	1:A:198:ARG:NH2	2.42	0.45
1:A:204:GLU:O	1:A:543:ARG:HD3	2.16	0.45
1:A:294:TYR:O	1:A:296:ASP:N	2.49	0.45
1:A:337:LEU:CD1	1:A:519:GLN:HE22	2.29	0.45
1:A:183:HIS:O	1:A:184:GLN:CB	2.64	0.45
1:A:214:LYS:HA	1:A:214:LYS:HE3	1.99	0.45
1:A:373:ILE:HG23	1:A:412:TYR:CD2	2.52	0.45
1:A:322:GLN:HE21	1:A:322:GLN:HA	1.82	0.44
1:A:26:CGU:C	1:A:28:PHE:N	2.80	0.44
1:A:173:ALA:HA	1:A:178:LYS:HB3	1.99	0.44
1:A:153:GLY:HA3	1:A:207:VAL:HG13	2.00	0.44
1:A:434:GLY:HA3	1:A:507:PHE:CZ	2.52	0.44
1:A:345:TYR:CZ	1:A:347:PRO:HG2	2.52	0.43
1:A:390:TRP:CH2	1:A:391:ARG:HG2	2.53	0.43
1:A:441:ASN:ND2	1:A:441:ASN:O	2.51	0.43
1:A:360:ARG:CD	1:A:363:LYS:HD2	2.49	0.43
1:A:387:ARG:HB3	1:A:396:ARG:HG3	2.00	0.43
1:A:108:ASP:O	1:A:115:ARG:NE	2.52	0.42
1:A:164:THR:HG22	1:A:222:ASP:HB2	2.01	0.42
1:A:329:SER:OG	1:A:337:LEU:HB2	2.20	0.41
1:A:50:ALA:HB1	1:A:56:LYS:HG2	2.03	0.41
1:A:152:ARG:O	1:A:206:GLY:HA2	2.20	0.41
1:A:333:ASP:HB3	1:A:409:PHE:CZ	2.56	0.41
1:A:59:ALA:O	1:A:62:GLU:O	2.38	0.41
1:A:286:THR:HG23	1:A:435:ARG:NH2	2.36	0.40
1:A:498:ALA:O	1:A:499:CYS:HB2	2.21	0.40
1:A:261:PRO:O	1:A:265:GLY:N	2.52	0.40
1:A:130:ASP:HA	1:A:131:PRO:HD3	1.96	0.40
1:A:293:SER:O	1:A:294:TYR:C	2.60	0.40

There are no symmetry-related clashes.

5.3 Torsion angles ⓘ

5.3.1 Protein backbone ⓘ

In the following table, the Percentiles column shows the percent Ramachandran outliers of the chain as a percentile score with respect to all X-ray entries followed by that with respect to entries of similar resolution.

The Analysed column shows the number of residues for which the backbone conformation was analysed, and the total number of residues.

Mol	Chain	Analysed	Favoured	Allowed	Outliers	Percentiles	
1	A	513/560 (92%)	417 (81%)	74 (14%)	22 (4%)	3	23

All (22) Ramachandran outliers are listed below:

Mol	Chain	Res	Type
1	A	13	LEU
1	A	184	GLN
1	A	294	TYR
1	A	295	ILE
1	A	296	ASP
1	A	529	CYS
1	A	545	LYS
1	A	11	GLY
1	A	174	SER
1	A	534	LYS
1	A	9	ARG
1	A	147	GLN
1	A	181	SER
1	A	425	ALA
1	A	27	ALA
1	A	392	GLU
1	A	175	ALA
1	A	194	GLU
1	A	499	CYS
1	A	48	GLU
1	A	150	PRO
1	A	261	PRO

5.3.2 Protein sidechains ⓘ

In the following table, the Percentiles column shows the percent sidechain outliers of the chain as a percentile score with respect to all X-ray entries followed by that with respect to entries of similar resolution.

The Analysed column shows the number of residues for which the sidechain conformation was analysed, and the total number of residues.

Mol	Chain	Analysed	Rotameric	Outliers	Percentiles	
1	A	444/469 (95%)	407 (92%)	37 (8%)	13	46

All (37) residues with a non-rotameric sidechain are listed below:

Mol	Chain	Res	Type
1	A	13	LEU
1	A	15	ARG
1	A	24	TYR
1	A	37	THR
1	A	65	CYS
1	A	77	VAL
1	A	98	GLU
1	A	121	THR
1	A	151	ASP
1	A	159	ARG
1	A	176	GLN
1	A	183	HIS
1	A	214	LYS
1	A	221	CYS
1	A	278	GLU
1	A	284	ASP
1	A	288	ARG
1	A	298	ARG
1	A	304	ASP
1	A	307	ILE
1	A	318	ARG
1	A	322	GLN
1	A	326	CYS
1	A	334	ARG
1	A	349	ASP
1	A	359	VAL
1	A	370	GLU
1	A	398	ILE
1	A	411	ASP
1	A	420	ASP
1	A	444	GLU
1	A	471	CYS
1	A	497	ASP
1	A	524	SER
1	A	529	CYS
1	A	547	TRP
1	A	554	GLN

Some sidechains can be flipped to improve hydrogen bonding and reduce clashes. All (7) such sidechains are listed below:

Mol	Chain	Res	Type
1	A	87	GLN
1	A	154	GLN

Continued on next page...

Continued from previous page...

Mol	Chain	Res	Type
1	A	184	GLN
1	A	322	GLN
1	A	429	GLN
1	A	519	GLN
1	A	549	GLN

5.3.3 RNA ⓘ

There are no RNA molecules in this entry.

5.4 Non-standard residues in protein, DNA, RNA chains ⓘ

10 non-standard protein/DNA/RNA residues are modelled in this entry.

In the following table, the Counts columns list the number of bonds (or angles) for which Mogul statistics could be retrieved, the number of bonds (or angles) that are observed in the model and the number of bonds (or angles) that are defined in the chemical component dictionary. The Link column lists molecule types, if any, to which the group is linked. The Z score for a bond length (or angle) is the number of standard deviations the observed value is removed from the expected value. A bond length (or angle) with $|Z| > 2$ is considered an outlier worth inspection. RMSZ is the root-mean-square of all Z scores of the bond lengths (or angles).

Mol	Type	Chain	Res	Link	Bond lengths			Bond angles		
					Counts	RMSZ	$\# Z > 2$	Counts	RMSZ	$\# Z > 2$
1	CGU	A	14	1	5,11,12	0.47	0	4,14,16	1.25	0
1	CGU	A	16	1,3	5,11,12	0.63	0	4,14,16	1.75	1 (25%)
1	CGU	A	19	1,3	5,11,12	0.43	0	4,14,16	1.55	1 (25%)
1	CGU	A	20	1,3	5,11,12	0.58	0	4,14,16	1.94	2 (50%)
1	CGU	A	25	1,3	5,11,12	0.41	0	4,14,16	1.93	3 (75%)
1	CGU	A	26	1,3	5,11,12	0.62	0	4,14,16	1.57	1 (25%)
1	CGU	A	29	1,3	5,11,12	0.53	0	4,14,16	2.07	1 (25%)
1	CGU	A	32	1	5,11,12	0.75	0	4,14,16	1.26	0
1	CGU	A	6	1	5,11,12	0.50	0	4,14,16	1.42	1 (25%)
1	CGU	A	7	1	5,11,12	0.53	0	4,14,16	1.64	0

In the following table, the Chirals column lists the number of chiral outliers, the number of chiral centers analysed, the number of these observed in the model and the number defined in the chemical component dictionary. Similar counts are reported in the Torsion and Rings columns. '-' means no outliers of that kind were identified.

Mol	Type	Chain	Res	Link	Chirals	Torsions	Rings
1	CGU	A	14	1	-	0/4/14/16	0/0/0/0
1	CGU	A	16	1,3	-	0/4/14/16	0/0/0/0
1	CGU	A	19	1,3	-	0/4/14/16	0/0/0/0
1	CGU	A	20	1,3	-	0/4/14/16	0/0/0/0
1	CGU	A	25	1,3	-	0/4/14/16	0/0/0/0
1	CGU	A	26	1,3	-	0/4/14/16	0/0/0/0
1	CGU	A	29	1,3	-	0/4/14/16	0/0/0/0
1	CGU	A	32	1	-	0/4/14/16	0/0/0/0
1	CGU	A	6	1	-	0/4/14/16	0/0/0/0
1	CGU	A	7	1	-	0/4/14/16	0/0/0/0

There are no bond length outliers.

All (10) bond angle outliers are listed below:

Mol	Chain	Res	Type	Atoms	Z	Observed(°)	Ideal(°)
1	A	16	CGU	CB-CG-CD1	-2.47	108.06	112.81
1	A	25	CGU	O-C-CA	-2.29	118.70	125.02
1	A	20	CGU	CB-CG-CD1	-2.27	108.46	112.81
1	A	6	CGU	CB-CG-CD2	-2.17	108.64	112.81
1	A	26	CGU	CB-CG-CD2	-2.16	108.66	112.81
1	A	20	CGU	CB-CG-CD2	-2.09	108.78	112.81
1	A	25	CGU	CB-CG-CD1	-2.08	108.81	112.81
1	A	25	CGU	CB-CA-N	2.20	115.34	110.43
1	A	19	CGU	CB-CA-N	2.61	116.25	110.43
1	A	29	CGU	CB-CA-N	3.61	118.48	110.43

There are no chirality outliers.

There are no torsion outliers.

There are no ring outliers.

3 monomers are involved in 4 short contacts:

Mol	Chain	Res	Type	Clashes	Symm-Clashes
1	A	14	CGU	1	0
1	A	25	CGU	1	0
1	A	26	CGU	2	0

5.5 Carbohydrates [i](#)

There are no carbohydrates in this entry.

5.6 Ligand geometry

Of 8 ligands modelled in this entry, 4 are monoatomic - leaving 4 for Mogul analysis.

In the following table, the Counts columns list the number of bonds (or angles) for which Mogul statistics could be retrieved, the number of bonds (or angles) that are observed in the model and the number of bonds (or angles) that are defined in the chemical component dictionary. The Link column lists molecule types, if any, to which the group is linked. The Z score for a bond length (or angle) is the number of standard deviations the observed value is removed from the expected value. A bond length (or angle) with $|Z| > 2$ is considered an outlier worth inspection. RMSZ is the root-mean-square of all Z scores of the bond lengths (or angles).

Mol	Type	Chain	Res	Link	Bond lengths			Bond angles		
					Counts	RMSZ	$\# Z > 2$	Counts	RMSZ	$\# Z > 2$
2	NAG	A	601	1	14,14,15	0.55	0	15,19,21	1.44	3 (20%)
2	NAG	A	602	1,2	14,14,15	0.60	0	15,19,21	1.14	1 (6%)
2	NAG	A	603	2	14,14,15	0.49	0	15,19,21	1.28	2 (13%)
2	NAG	A	604	1	14,14,15	0.52	0	15,19,21	1.55	2 (13%)

In the following table, the Chirals column lists the number of chiral outliers, the number of chiral centers analysed, the number of these observed in the model and the number defined in the chemical component dictionary. Similar counts are reported in the Torsion and Rings columns. '-' means no outliers of that kind were identified.

Mol	Type	Chain	Res	Link	Chirals	Torsions	Rings
2	NAG	A	601	1	-	0/6/23/26	0/1/1/1
2	NAG	A	602	1,2	-	0/6/23/26	0/1/1/1
2	NAG	A	603	2	-	0/6/23/26	0/1/1/1
2	NAG	A	604	1	-	0/6/23/26	0/1/1/1

There are no bond length outliers.

All (8) bond angle outliers are listed below:

Mol	Chain	Res	Type	Atoms	Z	Observed(°)	Ideal(°)
2	A	604	NAG	O5-C1-C2	-4.92	104.63	111.47
2	A	603	NAG	O5-C1-C2	-2.45	108.06	111.47
2	A	601	NAG	O5-C1-C2	-2.21	108.40	111.47
2	A	604	NAG	O7-C7-C8	-2.19	118.07	122.06
2	A	603	NAG	C8-C7-N2	2.26	120.19	116.11
2	A	602	NAG	C4-C3-C2	2.80	115.12	111.02
2	A	601	NAG	C3-C4-C5	3.04	115.58	110.22
2	A	601	NAG	C4-C3-C2	3.39	115.98	111.02

There are no chirality outliers.

There are no torsion outliers.

There are no ring outliers.

No monomer is involved in short contacts.

5.7 Other polymers

There are no such residues in this entry.

5.8 Polymer linkage issues

There are no chain breaks in this entry.

6 Fit of model and data ⓘ

6.1 Protein, DNA and RNA chains ⓘ

In the following table, the column labelled ‘#RSRZ> 2’ contains the number (and percentage) of RSRZ outliers, followed by percent RSRZ outliers for the chain as percentile scores relative to all X-ray entries and entries of similar resolution. The OWAB column contains the minimum, median, 95th percentile and maximum values of the occupancy-weighted average B-factor per residue. The column labelled ‘Q< 0.9’ lists the number of (and percentage) of residues with an average occupancy less than 0.9.

Mol	Chain	Analysed	<RSRZ>	#RSRZ>2		OWAB(Å ²)	Q<0.9
1	A	518/560 (92%)	-0.03	16 (3%)	49 34	50, 83, 129, 157	0

All (16) RSRZ outliers are listed below:

Mol	Chain	Res	Type	RSRZ
1	A	229	ALA	4.8
1	A	491	ASP	3.7
1	A	252	THR	3.6
1	A	254	GLU	3.5
1	A	253	SER	3.3
1	A	231	GLU	3.0
1	A	496	GLY	2.5
1	A	495	ARG	2.5
1	A	557	GLU	2.4
1	A	329	SER	2.3
1	A	33	SER	2.2
1	A	493	GLY	2.2
1	A	492	GLU	2.2
1	A	170	LEU	2.2
1	A	534	LYS	2.0
1	A	228	GLU	2.0

6.2 Non-standard residues in protein, DNA, RNA chains ⓘ

In the following table, the Atoms column lists the number of modelled atoms in the group and the number defined in the chemical component dictionary. LLDF column lists the quality of electron density of the group with respect to its neighbouring residues in protein, DNA or RNA chains. The B-factors column lists the minimum, median, 95th percentile and maximum values of B factors of atoms in the group. The column labelled ‘Q< 0.9’ lists the number of atoms with occupancy less than 0.9.

Mol	Type	Chain	Res	Atoms	RSCC	RSR	LLDF	B-factors(\AA^2)	Q<0.9
1	CGU	A	20	12/13	0.91	0.18	-	68,81,87,90	0
1	CGU	A	7	12/13	0.82	0.21	-	103,109,114,119	0
1	CGU	A	16	12/13	0.90	0.16	-	71,79,83,87	0
1	CGU	A	32	12/13	0.78	0.44	-	123,128,131,134	0
1	CGU	A	26	12/13	0.87	0.15	-	83,95,102,103	0
1	CGU	A	29	12/13	0.85	0.13	-	104,110,125,125	0
1	CGU	A	6	12/13	0.91	0.20	-	78,91,95,96	0
1	CGU	A	19	12/13	0.93	0.17	-	50,54,65,66	0
1	CGU	A	25	12/13	0.89	0.15	-	92,100,106,109	0
1	CGU	A	14	12/13	0.89	0.14	-	62,72,79,80	0

6.3 Carbohydrates [i](#)

There are no carbohydrates in this entry.

6.4 Ligands [i](#)

In the following table, the Atoms column lists the number of modelled atoms in the group and the number defined in the chemical component dictionary. LLDF column lists the quality of electron density of the group with respect to its neighbouring residues in protein, DNA or RNA chains. The B-factors column lists the minimum, median, 95th percentile and maximum values of B factors of atoms in the group. The column labelled 'Q< 0.9' lists the number of atoms with occupancy less than 0.9.

Mol	Type	Chain	Res	Atoms	RSCC	RSR	LLDF	B-factors(\AA^2)	Q<0.9
2	NAG	A	602	14/15	0.92	0.22	0.25	107,116,121,124	0
2	NAG	A	604	14/15	0.91	0.17	-0.14	61,67,70,70	0
2	NAG	A	601	14/15	0.94	0.18	-	75,82,87,87	0
3	MG	A	607	1/1	0.92	0.08	-	74,74,74,74	0
2	NAG	A	603	14/15	0.83	0.23	-	114,126,129,133	0
3	MG	A	608	1/1	0.96	0.11	-	51,51,51,51	0
3	MG	A	606	1/1	0.95	0.26	-	77,77,77,77	0
3	MG	A	605	1/1	0.97	0.15	-	35,35,35,35	0

6.5 Other polymers [i](#)

There are no such residues in this entry.