



# wwPDB X-ray Structure Validation Summary Report ⓘ

Nov 4, 2017 – 11:41 PM EDT

PDB ID : 4EE4  
Title : Crystal structure of human M340H-beta-1,4-galactosyltransferase-1 (M340H-B4GAL-T1) in complex with tetrasaccharide from Lacto-N-neohexose  
Authors : Ramakrishnan, B.; Qasba, P.K.  
Deposited on : unknown  
Resolution : 1.95 Å(reported)

This is a wwPDB X-ray Structure Validation Summary Report for a publicly released PDB entry.

We welcome your comments at [validation@mail.wwpdb.org](mailto:validation@mail.wwpdb.org)

A user guide is available at

<http://wwpdb.org/validation/2016/XrayValidationReportHelp>

with specific help available everywhere you see the ⓘ symbol.

---

The following versions of software and data (see [references ⓘ](#)) were used in the production of this report:

MolProbity : 4.02b-467  
Mogul : 1.7.2 (RC1), CSD as538be (2017)  
Xtriage (Phenix) : 1.9-1692  
EDS : rb-20030345  
Percentile statistics : 20161228.v01 (using entries in the PDB archive December 28th 2016)  
Refmac : 5.8.0135  
CCP4 : 6.5.0  
Ideal geometry (proteins) : Engh & Huber (2001)  
Ideal geometry (DNA, RNA) : Parkinson et al. (1996)  
Validation Pipeline (wwPDB-VP) : rb-20030345

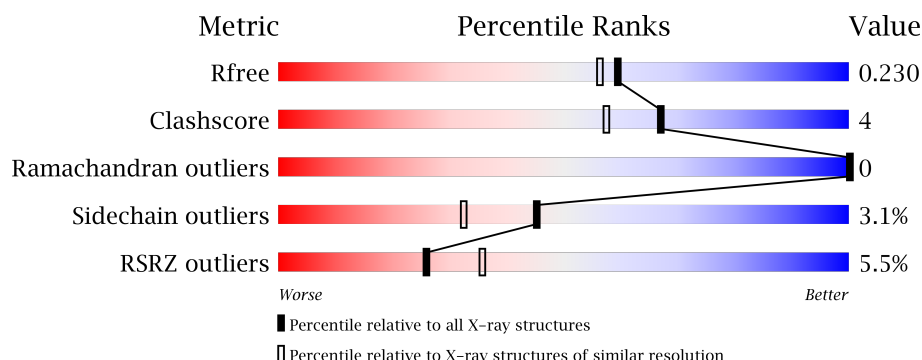
# 1 Overall quality at a glance

The following experimental techniques were used to determine the structure:

## *X-RAY DIFFRACTION*

The reported resolution of this entry is 1.95 Å.

Percentile scores (ranging between 0-100) for global validation metrics of the entry are shown in the following graphic. The table shows the number of entries on which the scores are based.



Metric	Whole archive (#Entries)	Similar resolution (#Entries, resolution range(Å))
$R_{free}$	100719	2004 (1.96-1.96)
Clashscore	112137	2136 (1.96-1.96)
Ramachandran outliers	110173	2117 (1.96-1.96)
Sidechain outliers	110143	2117 (1.96-1.96)
RSRZ outliers	101464	2018 (1.96-1.96)

The table below summarises the geometric issues observed across the polymeric chains and their fit to the electron density. The red, orange, yellow and green segments on the lower bar indicate the fraction of residues that contain outliers for  $\geq 3$ , 2, 1 and 0 types of geometric quality criteria. A grey segment represents the fraction of residues that are not modelled. The numeric value for each fraction is indicated below the corresponding segment, with a dot representing fractions  $\leq 5\%$ . The upper red bar (where present) indicates the fraction of residues that have poor fit to the electron density. The numeric value is given above the bar.

Mol	Chain	Length	Quality of chain
1	A	287	<div> <div>3%</div> <div>83%</div> <div>12%</div> <div>5%</div> </div>
1	B	287	<div> <div>6%</div> <div>85%</div> <div>8%</div> <div>5%</div> </div>
1	C	287	<div> <div>6%</div> <div>84%</div> <div>11%</div> <div>5%</div> </div>

The following table lists non-polymeric compounds, carbohydrate monomers and non-standard residues in protein, DNA, RNA chains that are outliers for geometric or electron-density-fit criteria:

Mol	Type	Chain	Res	Chirality	Geometry	Clashes	Electron density
7	SO4	A	410	-	-	-	X
7	SO4	A	411	-	-	-	X
7	SO4	A	413	-	-	-	X
7	SO4	B	409	-	-	-	X
7	SO4	B	413	-	-	-	X
7	SO4	B	414	-	-	-	X
7	SO4	B	417	-	-	-	X
7	SO4	C	407	-	-	-	X
7	SO4	C	409	-	-	-	X
8	GOL	A	414	-	-	-	X

## 2 Entry composition

There are 9 unique types of molecules in this entry. The entry contains 7755 atoms, of which 0 are hydrogens and 0 are deuteriums.

In the tables below, the ZeroOcc column contains the number of atoms modelled with zero occupancy, the AltConf column contains the number of residues with at least one atom in alternate conformation and the Trace column contains the number of residues modelled with at most 2 atoms.

- Molecule 1 is a protein called Beta-1,4-galactosyltransferase 1.

Mol	Chain	Residues	Atoms					ZeroOcc	AltConf	Trace
1	A	273	Total	C	N	O	S	0	3	0
			2233	1430	387	405	11			
1	B	273	Total	C	N	O	S	0	4	0
			2238	1433	386	408	11			
1	C	273	Total	C	N	O	S	0	1	0
			2224	1424	387	402	11			

There are 51 discrepancies between the modelled and reference sequences:

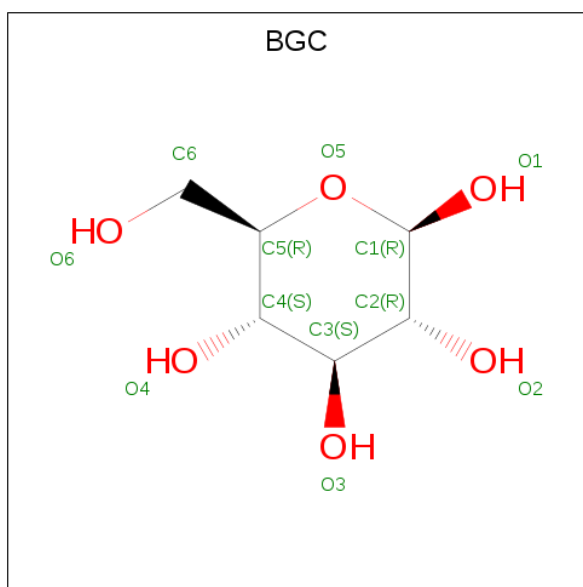
Chain	Residue	Modelled	Actual	Comment	Reference
A	112	ALA	-	EXPRESSION TAG	UNP P15291
A	113	SER	-	EXPRESSION TAG	UNP P15291
A	114	MET	-	EXPRESSION TAG	UNP P15291
A	115	THR	-	EXPRESSION TAG	UNP P15291
A	116	GLY	-	EXPRESSION TAG	UNP P15291
A	117	GLY	-	EXPRESSION TAG	UNP P15291
A	118	GLN	-	EXPRESSION TAG	UNP P15291
A	119	GLN	-	EXPRESSION TAG	UNP P15291
A	120	MET	-	EXPRESSION TAG	UNP P15291
A	121	GLY	-	EXPRESSION TAG	UNP P15291
A	122	ARG	-	EXPRESSION TAG	UNP P15291
A	123	GLY	-	EXPRESSION TAG	UNP P15291
A	124	SER	-	EXPRESSION TAG	UNP P15291
A	125	ALA	-	EXPRESSION TAG	UNP P15291
A	337	THR	ARG	ENGINEERED MUTATION	UNP P15291
A	338	THR	CYS	ENGINEERED MUTATION	UNP P15291
A	340	HIS	MET	ENGINEERED MUTATION	UNP P15291
B	112	ALA	-	EXPRESSION TAG	UNP P15291
B	113	SER	-	EXPRESSION TAG	UNP P15291
B	114	MET	-	EXPRESSION TAG	UNP P15291
B	115	THR	-	EXPRESSION TAG	UNP P15291
B	116	GLY	-	EXPRESSION TAG	UNP P15291
B	117	GLY	-	EXPRESSION TAG	UNP P15291

*Continued on next page...*

*Continued from previous page...*

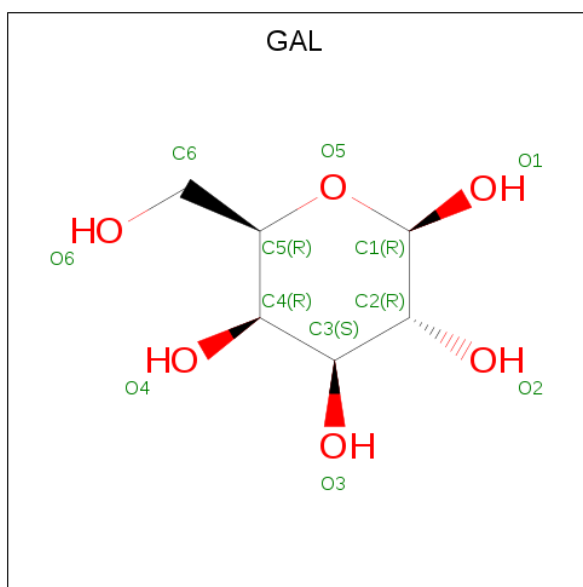
Chain	Residue	Modelled	Actual	Comment	Reference
B	118	GLN	-	EXPRESSION TAG	UNP P15291
B	119	GLN	-	EXPRESSION TAG	UNP P15291
B	120	MET	-	EXPRESSION TAG	UNP P15291
B	121	GLY	-	EXPRESSION TAG	UNP P15291
B	122	ARG	-	EXPRESSION TAG	UNP P15291
B	123	GLY	-	EXPRESSION TAG	UNP P15291
B	124	SER	-	EXPRESSION TAG	UNP P15291
B	125	ALA	-	EXPRESSION TAG	UNP P15291
B	337	THR	ARG	ENGINEERED MUTATION	UNP P15291
B	338	THR	CYS	ENGINEERED MUTATION	UNP P15291
B	340	HIS	MET	ENGINEERED MUTATION	UNP P15291
C	112	ALA	-	EXPRESSION TAG	UNP P15291
C	113	SER	-	EXPRESSION TAG	UNP P15291
C	114	MET	-	EXPRESSION TAG	UNP P15291
C	115	THR	-	EXPRESSION TAG	UNP P15291
C	116	GLY	-	EXPRESSION TAG	UNP P15291
C	117	GLY	-	EXPRESSION TAG	UNP P15291
C	118	GLN	-	EXPRESSION TAG	UNP P15291
C	119	GLN	-	EXPRESSION TAG	UNP P15291
C	120	MET	-	EXPRESSION TAG	UNP P15291
C	121	GLY	-	EXPRESSION TAG	UNP P15291
C	122	ARG	-	EXPRESSION TAG	UNP P15291
C	123	GLY	-	EXPRESSION TAG	UNP P15291
C	124	SER	-	EXPRESSION TAG	UNP P15291
C	125	ALA	-	EXPRESSION TAG	UNP P15291
C	337	THR	ARG	ENGINEERED MUTATION	UNP P15291
C	338	THR	CYS	ENGINEERED MUTATION	UNP P15291
C	340	HIS	MET	ENGINEERED MUTATION	UNP P15291

- Molecule 2 is BETA-D-GLUCOSE (three-letter code: BGC) (formula: C<sub>6</sub>H<sub>12</sub>O<sub>6</sub>).



Mol	Chain	Residues	Atoms			ZeroOcc	AltConf
2	A	1	Total	C	O	0	0
			12	6	6		
2	B	1	Total	C	O	0	0
			12	6	6		
2	C	1	Total	C	O	0	0
			12	6	6		

- Molecule 3 is BETA-D-GALACTOSE (three-letter code: GAL) (formula: C<sub>6</sub>H<sub>12</sub>O<sub>6</sub>).



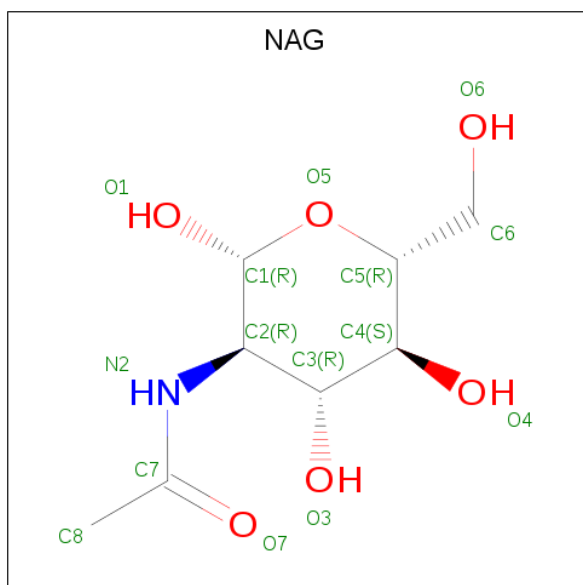
Mol	Chain	Residues	Atoms			ZeroOcc	AltConf
3	A	1	Total	C	O	0	0
			11	6	5		

*Continued on next page...*

Continued from previous page...

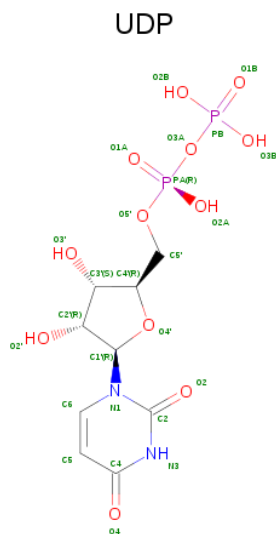
Mol	Chain	Residues	Atoms			ZeroOcc	AltConf
3	B	1	Total	C	O	0	0
			11	6	5		
3	C	1	Total	C	O	0	0
			11	6	5		

- Molecule 4 is N-ACETYL-D-GLUCOSAMINE (three-letter code: NAG) (formula:  $C_8H_{15}NO_6$ ).



Mol	Chain	Residues	Atoms				ZeroOcc	AltConf
4	A	1	Total	C	N	O	0	0
			14	8	1	5		
4	A	1	Total	C	N	O	0	0
			14	8	1	5		
4	B	1	Total	C	N	O	0	0
			14	8	1	5		
4	B	1	Total	C	N	O	0	0
			14	8	1	5		
4	C	1	Total	C	N	O	0	0
			14	8	1	5		
4	C	1	Total	C	N	O	0	0
			14	8	1	5		

- Molecule 5 is URIDINE-5'-DIPHOSPHATE (three-letter code: UDP) (formula:  $C_9H_{14}N_2O_{12}P_2$ ).



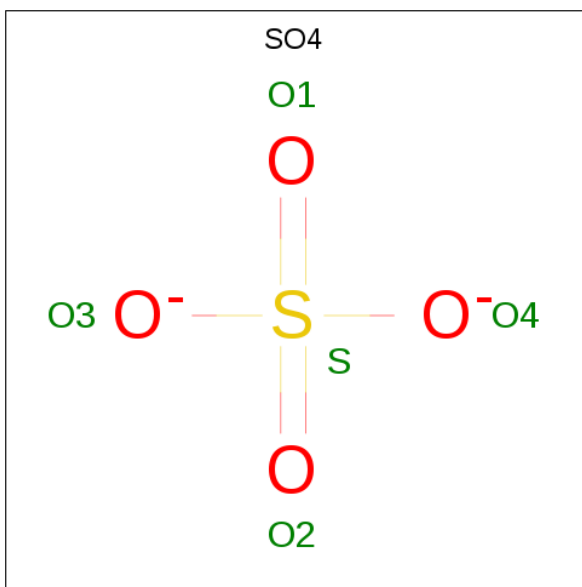
Mol	Chain	Residues	Atoms					ZeroOcc	AltConf
5	A	1	Total 25	C 9	N 2	O 12	P 2	0	0
5	B	1	Total 25	C 9	N 2	O 12	P 2	0	0
5	C	1	Total 25	C 9	N 2	O 12	P 2	0	0

- Molecule 6 is MANGANESE (II) ION (three-letter code: MN) (formula: Mn).

Mol	Chain	Residues	Atoms	ZeroOcc	AltConf
6	B	1	Total Mn 1 1	0	0
6	A	1	Total Mn 1 1	0	0
6	C	1	Total Mn 1 1	0	0

- Molecule 7 is SULFATE ION (three-letter code: SO4) (formula: O<sub>4</sub>S).





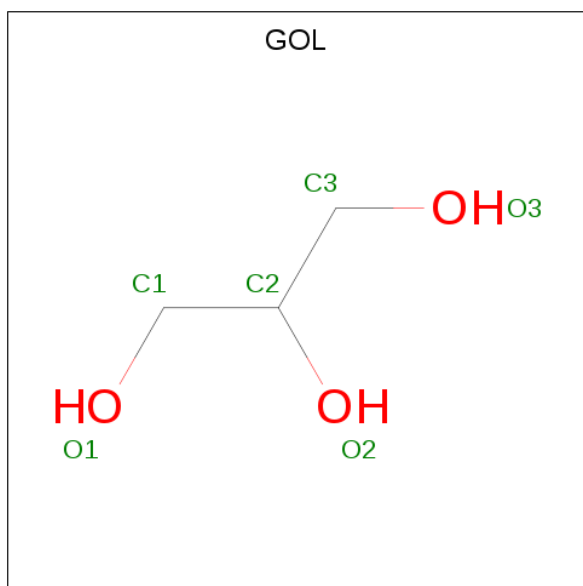
Mol	Chain	Residues	Atoms			ZeroOcc	AltConf
7	A	1	Total	O	S	0	0
			5	4	1		
7	A	1	Total	O	S	0	0
			5	4	1		
7	A	1	Total	O	S	0	0
			5	4	1		
7	A	1	Total	O	S	0	0
			5	4	1		
7	A	1	Total	O	S	0	0
			5	4	1		
7	A	1	Total	O	S	0	0
			5	4	1		
7	B	1	Total	O	S	0	0
			5	4	1		
7	B	1	Total	O	S	0	0
			5	4	1		
7	B	1	Total	O	S	0	0
			5	4	1		
7	B	1	Total	O	S	0	0
			5	4	1		
7	B	1	Total	O	S	0	0
			5	4	1		

*Continued on next page...*

*Continued from previous page...*

Mol	Chain	Residues	Atoms			ZeroOcc	AltConf
7	B	1	Total	O	S	0	0
			5	4	1		
7	B	1	Total	O	S	0	0
			5	4	1		
7	B	1	Total	O	S	0	0
			5	4	1		
7	B	1	Total	O	S	0	0
			5	4	1		
7	C	1	Total	O	S	0	0
			5	4	1		
7	C	1	Total	O	S	0	0
			5	4	1		
7	C	1	Total	O	S	0	0
			5	4	1		
7	C	1	Total	O	S	0	0
			5	4	1		

- Molecule 8 is GLYCEROL (three-letter code: GOL) (formula:  $C_3H_8O_3$ ).



Mol	Chain	Residues	Atoms			ZeroOcc	AltConf
8	A	1	Total	C	O	0	0
			6	3	3		
8	B	1	Total	C	O	0	0
			6	3	3		
8	B	1	Total	C	O	0	0
			6	3	3		

*Continued on next page...*

*Continued from previous page...*

Mol	Chain	Residues	Atoms			ZeroOcc	AltConf
8	C	1	Total	C	O	0	0
			6	3	3		

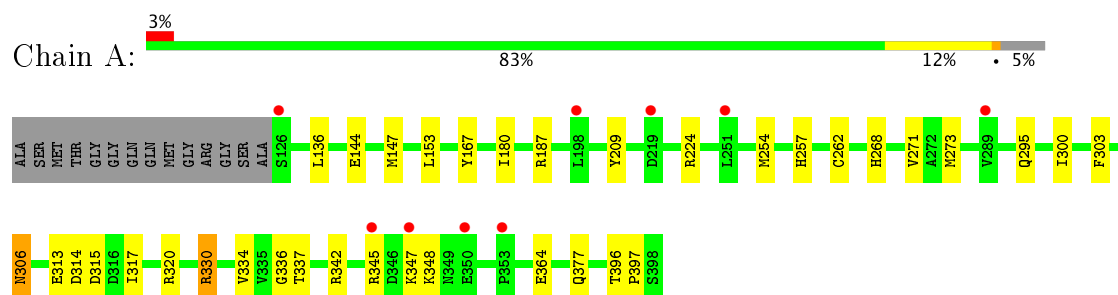
- Molecule 9 is water.

Mol	Chain	Residues	Atoms		ZeroOcc	AltConf
9	A	246	Total	O	0	0
			246	246		
9	B	269	Total	O	0	0
			269	269		
9	C	180	Total	O	0	0
			180	180		

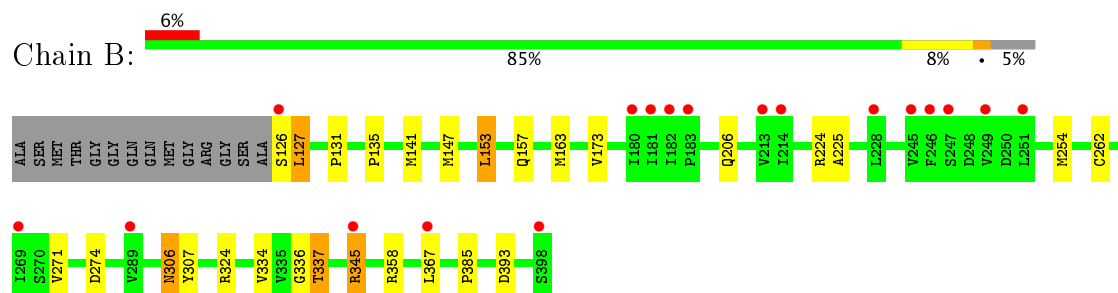
### 3 Residue-property plots [i](#)

These plots are drawn for all protein, RNA and DNA chains in the entry. The first graphic for a chain summarises the proportions of the various outlier classes displayed in the second graphic. The second graphic shows the sequence view annotated by issues in geometry and electron density. Residues are color-coded according to the number of geometric quality criteria for which they contain at least one outlier: green = 0, yellow = 1, orange = 2 and red = 3 or more. A red dot above a residue indicates a poor fit to the electron density ( $RSRZ > 2$ ). Stretches of 2 or more consecutive residues without any outlier are shown as a green connector. Residues present in the sample, but not in the model, are shown in grey.

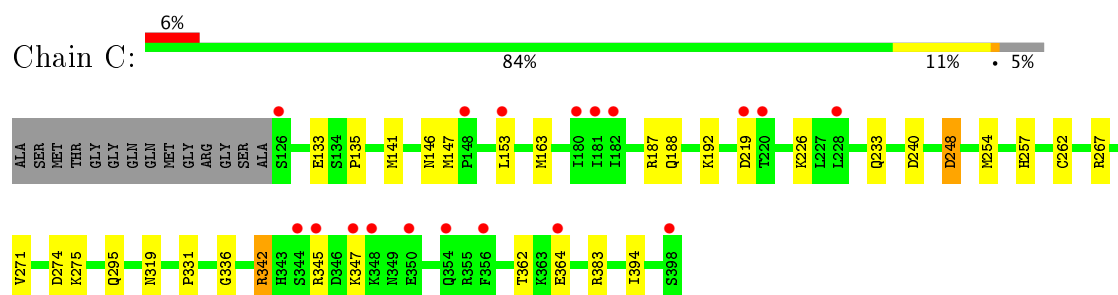
- Molecule 1: Beta-1,4-galactosyltransferase 1



- Molecule 1: Beta-1,4-galactosyltransferase 1



- Molecule 1: Beta-1,4-galactosyltransferase 1



## 4 Data and refinement statistics

Property	Value	Source
Space group	C 2 2 21	Depositor
Cell constants a, b, c, $\alpha$ , $\beta$ , $\gamma$	107.36Å 195.97Å 143.78Å 90.00° 90.00° 90.00°	Depositor
Resolution (Å)	36.82 – 1.95 36.82 – 1.95	Depositor EDS
% Data completeness (in resolution range)	93.0 (36.82-1.95) 93.1 (36.82-1.95)	Depositor EDS
$R_{merge}$	(Not available)	Depositor
$R_{sym}$	0.04	Depositor
$\langle I/\sigma(I) \rangle$ <sup>1</sup>	3.14 (at 1.95Å)	Xtriage
Refinement program	REFMAC 5.5.0110	Depositor
R, $R_{free}$	0.195 , 0.232 0.194 , 0.230	Depositor DCC
$R_{free}$ test set	5115 reflections (5.26%)	DCC
Wilson B-factor (Å <sup>2</sup> )	35.2	Xtriage
Anisotropy	0.071	Xtriage
Bulk solvent $k_{sol}$ (e/Å <sup>3</sup> ), $B_{sol}$ (Å <sup>2</sup> )	0.37 , 44.4	EDS
L-test for twinning <sup>2</sup>	$\langle  L  \rangle = 0.52$ , $\langle L^2 \rangle = 0.36$	Xtriage
Estimated twinning fraction	0.000 for 1/2*h-1/2*k,-3/2*h-1/2*k,-l 0.009 for 1/2*h+1/2*k,3/2*h-1/2*k,-l	Xtriage
$F_o, F_c$ correlation	0.96	EDS
Total number of atoms	7755	wwPDB-VP
Average B, all atoms (Å <sup>2</sup> )	36.0	wwPDB-VP

Xtriage's analysis on translational NCS is as follows: *The largest off-origin peak in the Patterson function is 3.50% of the height of the origin peak. No significant pseudotranslation is detected.*

<sup>1</sup>Intensities estimated from amplitudes.

<sup>2</sup>Theoretical values of  $\langle |L| \rangle$ ,  $\langle L^2 \rangle$  for acentric reflections are 0.5, 0.333 respectively for untwinned datasets, and 0.375, 0.2 for perfectly twinned datasets.

## 5 Model quality [i](#)

### 5.1 Standard geometry [i](#)

Bond lengths and bond angles in the following residue types are not validated in this section: GOL, UDP, BGC, NAG, MN, GAL, SO4

The Z score for a bond length (or angle) is the number of standard deviations the observed value is removed from the expected value. A bond length (or angle) with  $|Z| > 5$  is considered an outlier worth inspection. RMSZ is the root-mean-square of all Z scores of the bond lengths (or angles).

Mol	Chain	Bond lengths		Bond angles	
		RMSZ	$\# Z  > 5$	RMSZ	$\# Z  > 5$
1	A	0.98	0/2304	0.96	8/3130 (0.3%)
1	B	1.02	1/2312 (0.0%)	0.99	5/3141 (0.2%)
1	C	0.79	0/2289	0.84	2/3109 (0.1%)
All	All	0.93	1/6905 (0.0%)	0.94	15/9380 (0.2%)

Chiral center outliers are detected by calculating the chiral volume of a chiral center and verifying if the center is modelled as a planar moiety or with the opposite hand. A planarity outlier is detected by checking planarity of atoms in a peptide group, atoms in a mainchain group or atoms of a sidechain that are expected to be planar.

Mol	Chain	#Chirality outliers	#Planarity outliers
1	B	0	1

All (1) bond length outliers are listed below:

Mol	Chain	Res	Type	Atoms	Z	Observed(Å)	Ideal(Å)
1	B	225	ALA	CA-CB	5.36	1.63	1.52

The worst 5 of 15 bond angle outliers are listed below:

Mol	Chain	Res	Type	Atoms	Z	Observed(°)	Ideal(°)
1	A	262	CYS	CA-CB-SG	-7.81	99.94	114.00
1	A	187	ARG	NE-CZ-NH1	7.52	124.06	120.30
1	B	262	CYS	CA-CB-SG	-7.38	100.72	114.00
1	B	224	ARG	NE-CZ-NH2	-6.25	117.17	120.30
1	C	262	CYS	CA-CB-SG	-5.63	103.86	114.00

There are no chirality outliers.

All (1) planarity outliers are listed below:

Mol	Chain	Res	Type	Group
1	B	126	SER	Peptide

## 5.2 Too-close contacts ⓘ

In the following table, the Non-H and H(model) columns list the number of non-hydrogen atoms and hydrogen atoms in the chain respectively. The H(added) column lists the number of hydrogen atoms added and optimized by MolProbity. The Clashes column lists the number of clashes within the asymmetric unit, whereas Symm-Clashes lists symmetry related clashes.

Mol	Chain	Non-H	H(model)	H(added)	Clashes	Symm-Clashes
1	A	2233	0	2181	24	0
1	B	2238	0	2183	19	0
1	C	2224	0	2170	20	0
2	A	12	0	11	0	0
2	B	12	0	11	0	0
2	C	12	0	11	0	0
3	A	11	0	8	0	0
3	B	11	0	8	0	0
3	C	11	0	8	0	0
4	A	28	0	26	0	0
4	B	28	0	26	0	0
4	C	28	0	26	1	0
5	A	25	0	11	0	0
5	B	25	0	11	0	0
5	C	25	0	11	3	0
6	A	1	0	0	0	0
6	B	1	0	0	0	0
6	C	1	0	0	0	0
7	A	35	0	0	1	0
7	B	55	0	0	0	0
7	C	20	0	0	1	0
8	A	6	0	8	0	0
8	B	12	0	15	0	0
8	C	6	0	8	1	0
9	A	246	0	0	4	0
9	B	269	0	0	2	0
9	C	180	0	0	5	0
All	All	7755	0	6733	62	0

The all-atom clashscore is defined as the number of clashes found per 1000 atoms (including hydrogen atoms). The all-atom clashscore for this structure is 4.

The worst 5 of 62 close contacts within the same asymmetric unit are listed below, sorted by their clash magnitude.

Atom-1	Atom-2	Interatomic distance (Å)	Clash overlap (Å)
1:A:306:ASN:HD22	1:A:306:ASN:H	1.26	0.80
1:A:254:MET:SD	1:A:337[A]:THR:HG22	2.23	0.78
1:A:377:GLN:HG2	9:A:722:HOH:O	1.83	0.78
1:A:334:VAL:O	1:A:337[B]:THR:HG23	1.83	0.77
1:B:334:VAL:O	1:B:337[B]:THR:HG23	1.87	0.74

There are no symmetry-related clashes.

## 5.3 Torsion angles [i](#)

### 5.3.1 Protein backbone [i](#)

In the following table, the Percentiles column shows the percent Ramachandran outliers of the chain as a percentile score with respect to all X-ray entries followed by that with respect to entries of similar resolution.

The Analysed column shows the number of residues for which the backbone conformation was analysed, and the total number of residues.

Mol	Chain	Analysed	Favoured	Allowed	Outliers	Percentiles	
1	A	274/287 (96%)	268 (98%)	6 (2%)	0	100	100
1	B	275/287 (96%)	272 (99%)	3 (1%)	0	100	100
1	C	272/287 (95%)	263 (97%)	9 (3%)	0	100	100
All	All	821/861 (95%)	803 (98%)	18 (2%)	0	100	100

There are no Ramachandran outliers to report.

### 5.3.2 Protein sidechains [i](#)

In the following table, the Percentiles column shows the percent sidechain outliers of the chain as a percentile score with respect to all X-ray entries followed by that with respect to entries of similar resolution.

The Analysed column shows the number of residues for which the sidechain conformation was analysed, and the total number of residues.

Mol	Chain	Analysed	Rotameric	Outliers	Percentiles	
1	A	247/252 (98%)	242 (98%)	5 (2%)	60	52
1	B	248/252 (98%)	240 (97%)	8 (3%)	44	31
1	C	245/252 (97%)	233 (95%)	12 (5%)	29	14

*Continued on next page...*



*Continued from previous page...*

Mol	Chain	Analysed	Rotameric	Outliers	Percentiles
All	All	740/756 (98%)	715 (97%)	25 (3%)	45 29

5 of 25 residues with a non-rotameric sidechain are listed below:

Mol	Chain	Res	Type
1	B	345	ARG
1	C	133	GLU
1	C	347	LYS
1	B	385	PRO
1	C	147	MET

Some sidechains can be flipped to improve hydrogen bonding and reduce clashes. 5 of 8 such sidechains are listed below:

Mol	Chain	Res	Type
1	B	157	GLN
1	C	206	GLN
1	B	206	GLN
1	A	306	ASN
1	B	186	ASN

### 5.3.3 RNA ⓘ

There are no RNA molecules in this entry.

## 5.4 Non-standard residues in protein, DNA, RNA chains ⓘ

There are no non-standard protein/DNA/RNA residues in this entry.

## 5.5 Carbohydrates ⓘ

There are no carbohydrates in this entry.

## 5.6 Ligand geometry ⓘ

Of 44 ligands modelled in this entry, 3 are monoatomic - leaving 41 for Mogul analysis.

In the following table, the Counts columns list the number of bonds (or angles) for which Mogul statistics could be retrieved, the number of bonds (or angles) that are observed in the model and the number of bonds (or angles) that are defined in the Chemical Component Dictionary. The

Link column lists molecule types, if any, to which the group is linked. The Z score for a bond length (or angle) is the number of standard deviations the observed value is removed from the expected value. A bond length (or angle) with  $|Z| > 2$  is considered an outlier worth inspection. RMSZ is the root-mean-square of all Z scores of the bond lengths (or angles).

Mol	Type	Chain	Res	Link	Bond lengths			Bond angles		
					Counts	RMSZ	# Z  > 2	Counts	RMSZ	# Z  > 2
2	BGC	A	401	3	12,12,12	0.90	0	17,17,17	1.28	2 (11%)
3	GAL	A	402	2,4	11,11,12	0.68	0	13,15,17	1.42	2 (15%)
4	NAG	A	403	3	14,14,15	0.60	0	15,19,21	1.09	2 (13%)
4	NAG	A	404	3	14,14,15	0.55	0	15,19,21	1.80	4 (26%)
5	UDP	A	405	6	21,26,26	1.68	4 (19%)	22,40,40	2.22	2 (9%)
7	SO4	A	407	-	4,4,4	0.25	0	6,6,6	0.63	0
7	SO4	A	408	-	4,4,4	0.37	0	6,6,6	0.57	0
7	SO4	A	409	-	4,4,4	0.30	0	6,6,6	0.57	0
7	SO4	A	410	-	4,4,4	0.28	0	6,6,6	0.82	0
7	SO4	A	411	-	4,4,4	0.34	0	6,6,6	0.34	0
7	SO4	A	412	-	4,4,4	0.23	0	6,6,6	0.50	0
7	SO4	A	413	-	4,4,4	0.12	0	6,6,6	0.42	0
8	GOL	A	414	-	5,5,5	0.46	0	5,5,5	1.09	0
2	BGC	B	401	3	12,12,12	0.67	0	17,17,17	1.44	3 (17%)
3	GAL	B	402	2,4	11,11,12	0.68	0	13,15,17	1.37	1 (7%)
4	NAG	B	403	3	14,14,15	0.64	0	15,19,21	0.94	1 (6%)
4	NAG	B	404	3	14,14,15	0.86	0	15,19,21	1.74	5 (33%)
5	UDP	B	405	6	21,26,26	1.48	4 (19%)	22,40,40	1.25	2 (9%)
7	SO4	B	407	-	4,4,4	0.17	0	6,6,6	0.21	0
7	SO4	B	408	-	4,4,4	0.21	0	6,6,6	0.69	0
7	SO4	B	409	-	4,4,4	0.50	0	6,6,6	0.84	0
7	SO4	B	410	-	4,4,4	0.30	0	6,6,6	0.56	0
7	SO4	B	411	-	4,4,4	0.27	0	6,6,6	0.46	0
7	SO4	B	412	-	4,4,4	0.23	0	6,6,6	0.63	0
7	SO4	B	413	-	4,4,4	0.38	0	6,6,6	0.84	0
7	SO4	B	414	-	4,4,4	0.15	0	6,6,6	0.54	0
7	SO4	B	415	-	4,4,4	0.17	0	6,6,6	0.39	0
7	SO4	B	416	-	4,4,4	0.20	0	6,6,6	0.17	0
7	SO4	B	417	-	4,4,4	0.15	0	6,6,6	0.20	0
8	GOL	B	418	-	5,5,5	0.21	0	5,5,5	1.93	2 (40%)
8	GOL	B	419	-	5,5,5	0.46	0	5,5,5	0.91	0
2	BGC	C	401	3	12,12,12	0.70	0	17,17,17	1.69	4 (23%)
3	GAL	C	402	2,4	11,11,12	0.59	0	13,15,17	1.34	3 (23%)
4	NAG	C	403	3	14,14,15	0.62	0	15,19,21	1.02	1 (6%)
4	NAG	C	404	3	14,14,15	0.64	0	15,19,21	1.59	3 (20%)

Mol	Type	Chain	Res	Link	Bond lengths			Bond angles		
					Counts	RMSZ	# Z  > 2	Counts	RMSZ	# Z  > 2
5	UDP	C	405	6	21,26,26	1.12	2 (9%)	22,40,40	1.84	3 (13%)
7	SO4	C	407	-	4,4,4	0.15	0	6,6,6	0.62	0
7	SO4	C	408	-	4,4,4	0.20	0	6,6,6	0.34	0
7	SO4	C	409	-	4,4,4	0.17	0	6,6,6	0.47	0
7	SO4	C	410	-	4,4,4	0.16	0	6,6,6	0.13	0
8	GOL	C	411	-	5,5,5	0.30	0	5,5,5	1.16	1 (20%)

In the following table, the Chirals column lists the number of chiral outliers, the number of chiral centers analysed, the number of these observed in the model and the number defined in the Chemical Component Dictionary. Similar counts are reported in the Torsion and Rings columns. '-' means no outliers of that kind were identified.

Mol	Type	Chain	Res	Link	Chirals	Torsions	Rings
2	BGC	A	401	3	-	0/2/22/22	0/1/1/1
3	GAL	A	402	2,4	-	0/2/19/22	0/1/1/1
4	NAG	A	403	3	-	0/6/23/26	0/1/1/1
4	NAG	A	404	3	-	0/6/23/26	0/1/1/1
5	UDP	A	405	6	-	0/12/32/32	0/2/2/2
7	SO4	A	407	-	-	0/0/0/0	0/0/0/0
7	SO4	A	408	-	-	0/0/0/0	0/0/0/0
7	SO4	A	409	-	-	0/0/0/0	0/0/0/0
7	SO4	A	410	-	-	0/0/0/0	0/0/0/0
7	SO4	A	411	-	-	0/0/0/0	0/0/0/0
7	SO4	A	412	-	-	0/0/0/0	0/0/0/0
7	SO4	A	413	-	-	0/0/0/0	0/0/0/0
8	GOL	A	414	-	-	0/4/4/4	0/0/0/0
2	BGC	B	401	3	-	0/2/22/22	0/1/1/1
3	GAL	B	402	2,4	-	0/2/19/22	0/1/1/1
4	NAG	B	403	3	-	0/6/23/26	0/1/1/1
4	NAG	B	404	3	-	0/6/23/26	0/1/1/1
5	UDP	B	405	6	-	0/12/32/32	0/2/2/2
7	SO4	B	407	-	-	0/0/0/0	0/0/0/0
7	SO4	B	408	-	-	0/0/0/0	0/0/0/0
7	SO4	B	409	-	-	0/0/0/0	0/0/0/0
7	SO4	B	410	-	-	0/0/0/0	0/0/0/0
7	SO4	B	411	-	-	0/0/0/0	0/0/0/0
7	SO4	B	412	-	-	0/0/0/0	0/0/0/0
7	SO4	B	413	-	-	0/0/0/0	0/0/0/0
7	SO4	B	414	-	-	0/0/0/0	0/0/0/0
7	SO4	B	415	-	-	0/0/0/0	0/0/0/0
7	SO4	B	416	-	-	0/0/0/0	0/0/0/0
7	SO4	B	417	-	-	0/0/0/0	0/0/0/0

Continued on next page...

*Continued from previous page...*

Mol	Type	Chain	Res	Link	Chirals	Torsions	Rings
8	GOL	B	418	-	-	0/4/4/4	0/0/0/0
8	GOL	B	419	-	-	0/4/4/4	0/0/0/0
2	BGC	C	401	3	-	0/2/22/22	0/1/1/1
3	GAL	C	402	2,4	-	0/2/19/22	0/1/1/1
4	NAG	C	403	3	-	0/6/23/26	0/1/1/1
4	NAG	C	404	3	-	0/6/23/26	0/1/1/1
5	UDP	C	405	6	-	0/12/32/32	0/2/2/2
7	SO4	C	407	-	-	0/0/0/0	0/0/0/0
7	SO4	C	408	-	-	0/0/0/0	0/0/0/0
7	SO4	C	409	-	-	0/0/0/0	0/0/0/0
7	SO4	C	410	-	-	0/0/0/0	0/0/0/0
8	GOL	C	411	-	-	0/4/4/4	0/0/0/0

The worst 5 of 10 bond length outliers are listed below:

Mol	Chain	Res	Type	Atoms	Z	Observed(Å)	Ideal(Å)
5	C	405	UDP	PB-O3A	2.10	1.63	1.60
5	B	405	UDP	C6-N1	2.20	1.38	1.35
5	A	405	UDP	C6-C5	2.31	1.43	1.38
5	B	405	UDP	O4'-C1'	2.60	1.44	1.41
5	B	405	UDP	PB-O3A	2.88	1.64	1.60

The worst 5 of 41 bond angle outliers are listed below:

Mol	Chain	Res	Type	Atoms	Z	Observed(°)	Ideal(°)
2	C	401	BGC	C1-C2-C3	-3.31	104.67	110.65
4	C	404	NAG	C6-C5-C4	-3.31	105.27	113.00
2	B	401	BGC	C1-O5-C5	-3.22	107.59	113.39
4	B	404	NAG	C6-C5-C4	-3.22	105.47	113.00
3	B	402	GAL	O5-C1-C2	-3.13	105.89	110.79

There are no chirality outliers.

There are no torsion outliers.

There are no ring outliers.

5 monomers are involved in 6 short contacts:

Mol	Chain	Res	Type	Clashes	Symm-Clashes
7	A	407	SO4	1	0
4	C	403	NAG	1	0
5	C	405	UDP	3	0
7	C	409	SO4	1	0

*Continued on next page...*

*Continued from previous page...*

Mol	Chain	Res	Type	Clashes	Symm-Clashes
8	C	411	GOL	1	0

## 5.7 Other polymers [i](#)

There are no such residues in this entry.

## 5.8 Polymer linkage issues [i](#)

There are no chain breaks in this entry.

## 6 Fit of model and data [i](#)

### 6.1 Protein, DNA and RNA chains [i](#)

In the following table, the column labelled ‘#RSRZ> 2’ contains the number (and percentage) of RSRZ outliers, followed by percent RSRZ outliers for the chain as percentile scores relative to all X-ray entries and entries of similar resolution. The OWAB column contains the minimum, median, 95<sup>th</sup> percentile and maximum values of the occupancy-weighted average B-factor per residue. The column labelled ‘Q< 0.9’ lists the number of (and percentage) of residues with an average occupancy less than 0.9.

Mol	Chain	Analysed	<RSRZ>	#RSRZ>2	OWAB(Å <sup>2</sup> )	Q<0.9
1	A	273/287 (95%)	0.13	9 (3%) 47 58	22, 31, 49, 70	0
1	B	273/287 (95%)	0.25	18 (6%) 19 28	21, 27, 42, 61	0
1	C	273/287 (95%)	0.38	18 (6%) 19 28	28, 39, 58, 72	0
All	All	819/861 (95%)	0.25	45 (5%) 26 36	21, 33, 54, 72	0

The worst 5 of 45 RSRZ outliers are listed below:

Mol	Chain	Res	Type	RSRZ
1	A	126	SER	5.3
1	C	347	LYS	5.2
1	B	126	SER	4.6
1	C	153	LEU	4.2
1	B	182	ILE	4.1

### 6.2 Non-standard residues in protein, DNA, RNA chains [i](#)

There are no non-standard protein/DNA/RNA residues in this entry.

### 6.3 Carbohydrates [i](#)

There are no carbohydrates in this entry.

### 6.4 Ligands [i](#)

In the following table, the Atoms column lists the number of modelled atoms in the group and the number defined in the chemical component dictionary. LLDF column lists the quality of electron density of the group with respect to its neighbouring residues in protein, DNA or RNA chains. The B-factors column lists the minimum, median, 95<sup>th</sup> percentile and maximum values of B factors

of atoms in the group. The column labelled 'Q< 0.9' lists the number of atoms with occupancy less than 0.9.

Mol	Type	Chain	Res	Atoms	RSCC	RSR	LLDF	B-factors(Å <sup>2</sup> )	Q<0.9
7	SO4	C	409	5/5	0.75	0.35	9.19	91,92,92,94	0
7	SO4	A	413	5/5	0.85	0.45	8.16	126,127,128,128	0
7	SO4	A	411	5/5	0.83	0.22	4.82	83,84,87,89	0
7	SO4	A	410	5/5	0.75	0.23	4.76	76,85,86,87	0
7	SO4	B	413	5/5	0.93	0.29	4.42	45,53,59,60	0
7	SO4	B	417	5/5	0.83	0.38	4.40	122,122,123,123	0
7	SO4	B	414	5/5	0.68	0.30	3.61	101,105,107,108	0
8	GOL	A	414	6/6	0.88	0.20	3.29	32,41,51,59	0
7	SO4	C	407	5/5	0.97	0.15	2.21	47,50,52,58	0
7	SO4	B	409	5/5	0.79	0.28	2.13	66,74,74,77	0
8	GOL	C	411	6/6	0.88	0.19	1.93	45,55,56,61	0
7	SO4	A	408	5/5	0.90	0.18	1.68	58,64,66,69	0
8	GOL	B	418	6/6	0.93	0.18	0.87	28,39,49,53	0
5	UDP	B	405	25/25	0.83	0.20	0.70	23,29,98,101	0
7	SO4	C	408	5/5	0.90	0.15	0.60	80,81,84,84	0
5	UDP	A	405	25/25	0.80	0.19	0.53	30,41,109,109	0
5	UDP	C	405	25/25	0.80	0.22	0.52	41,49,117,118	0
4	NAG	B	403	14/15	0.97	0.10	-0.34	23,26,29,29	0
7	SO4	A	407	5/5	0.91	0.11	-0.72	72,73,75,76	0
7	SO4	B	408	5/5	0.97	0.09	-1.45	62,65,65,65	0
4	NAG	C	403	14/15	0.95	0.07	-1.48	43,45,46,47	0
8	GOL	B	419	6/6	0.97	0.09	-1.52	26,30,35,37	0
4	NAG	A	403	14/15	0.98	0.06	-2.35	26,30,32,32	0
3	GAL	B	402	11/12	0.98	0.09	-	31,35,40,43	0
7	SO4	B	410	5/5	0.54	0.34	-	101,105,108,108	0
7	SO4	B	407	5/5	0.96	0.21	-	82,82,84,85	0
7	SO4	B	411	5/5	0.89	0.26	-	75,76,77,79	0
3	GAL	A	402	11/12	0.96	0.13	-	32,38,49,50	0
7	SO4	B	415	5/5	0.86	0.44	-	94,94,96,97	0
6	MN	A	406	1/1	0.95	0.04	-	59,59,59,59	0
7	SO4	B	412	5/5	0.70	0.29	-	105,105,107,107	0
2	BGC	B	401	12/12	0.92	0.14	-	34,44,54,55	0
6	MN	B	406	1/1	1.00	0.06	-	45,45,45,45	0
4	NAG	A	404	14/15	0.93	0.20	-	51,57,60,62	0
6	MN	C	406	1/1	0.93	0.10	-	64,64,64,64	0
4	NAG	C	404	14/15	0.91	0.23	-	59,66,68,71	0
4	NAG	B	404	14/15	0.96	0.16	-	40,48,50,58	0
7	SO4	C	410	5/5	0.90	0.26	-	100,101,102,103	0
2	BGC	A	401	12/12	0.95	0.11	-	36,41,52,56	0
7	SO4	A	412	5/5	0.72	0.28	-	107,107,108,109	0

*Continued on next page...*

*Continued from previous page...*

Mol	Type	Chain	Res	Atoms	RSCC	RSR	LLDF	B-factors( $\text{\AA}^2$ )	Q<0.9
7	SO4	B	416	5/5	0.49	0.41	-	121,122,123,123	0
3	GAL	C	402	11/12	0.94	0.13	-	50,55,57,58	0
7	SO4	A	409	5/5	0.86	0.35	-	73,75,78,80	0
2	BGC	C	401	12/12	0.92	0.19	-	55,59,65,66	0

## 6.5 Other polymers [i](#)

There are no such residues in this entry.