



Full wwPDB X-ray Structure Validation Report ⓘ

Nov 21, 2017 – 08:30 AM EST

PDB ID : 1ETA
Title : THE X-RAY CRYSTAL STRUCTURE REFINEMENTS OF NORMAL HUMAN TRANSTHYRETIN AND THE AMYLOIDOGENIC VAL 30->MET VARIANT TO 1.7 ANGSTROMS RESOLUTION
Authors : Braden, B.C.; Steinrauf, L.K.; Hamilton, J.A.
Deposited on : unknown
Resolution : 1.70 Å(reported)

This is a Full wwPDB X-ray Structure Validation Report for a publicly released PDB entry.

We welcome your comments at validation@mail.wwpdb.org

A user guide is available at

<http://wwpdb.org/validation/2016/XrayValidationReportHelp>

with specific help available everywhere you see the ⓘ symbol.

The following versions of software and data (see [references ⓘ](#)) were used in the production of this report:

MolProbity	:	4.02b-467
Mogul	:	1.7.2 (RC1), CSD as538be (2017)
Xtriage (Phenix)	:	1.9-1692
EDS	:	rb-20030345
Percentile statistics	:	20161228.v01 (using entries in the PDB archive December 28th 2016)
Refmac	:	5.8.0135
CCP4	:	6.5.0
Ideal geometry (proteins)	:	Engh & Huber (2001)
Ideal geometry (DNA, RNA)	:	Parkinson et al. (1996)
Validation Pipeline (wwPDB-VP)	:	rb-20030345

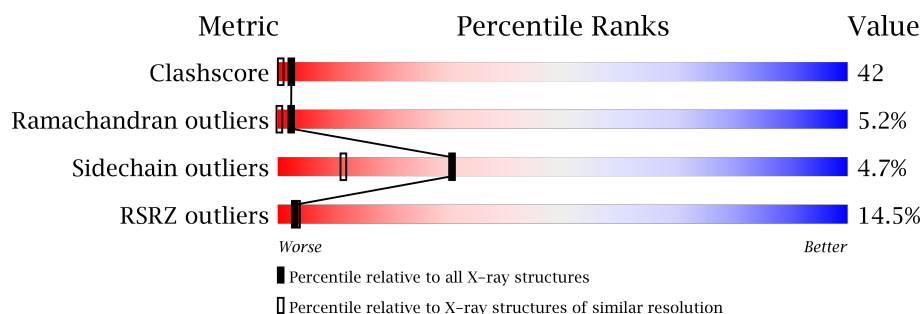
1 Overall quality at a glance

The following experimental techniques were used to determine the structure:

X-RAY DIFFRACTION

The reported resolution of this entry is 1.70 Å.

Percentile scores (ranging between 0-100) for global validation metrics of the entry are shown in the following graphic. The table shows the number of entries on which the scores are based.



Metric	Whole archive (#Entries)	Similar resolution (#Entries, resolution range(Å))
Clashscore	112137	3876 (1.70-1.70)
Ramachandran outliers	110173	3815 (1.70-1.70)
Sidechain outliers	110143	3815 (1.70-1.70)
RSRZ outliers	101464	3491 (1.70-1.70)

The table below summarises the geometric issues observed across the polymeric chains and their fit to the electron density. The red, orange, yellow and green segments on the lower bar indicate the fraction of residues that contain outliers for ≥ 3 , 2, 1 and 0 types of geometric quality criteria. A grey segment represents the fraction of residues that are not modelled. The numeric value for each fraction is indicated below the corresponding segment, with a dot representing fractions $\leq 5\%$. The upper red bar (where present) indicates the fraction of residues that have poor fit to the electron density. The numeric value is given above the bar.

Mol	Chain	Length	Quality of chain
1	1	128	<div> <div>11%</div> <div> <div></div> <div>61%</div> <div>28%</div> <div>11%</div> </div> </div>
1	2	128	<div> <div>18%</div> <div> <div></div> <div>60%</div> <div>30%</div> <div>9%</div> </div> </div>

The following table lists non-polymeric compounds, carbohydrate monomers and non-standard residues in protein, DNA, RNA chains that are outliers for geometric or electron-density-fit criteria:

Mol	Type	Chain	Res	Chirality	Geometry	Clashes	Electron density
2	T44	1	128	-	-	X	X
2	T44	2	129	-	-	X	-

2 Entry composition [i](#)

There are 3 unique types of molecules in this entry. The entry contains 2274 atoms, of which 0 are hydrogens and 0 are deuteriums.

In the tables below, the ZeroOcc column contains the number of atoms modelled with zero occupancy, the AltConf column contains the number of residues with at least one atom in alternate conformation and the Trace column contains the number of residues modelled with at most 2 atoms.

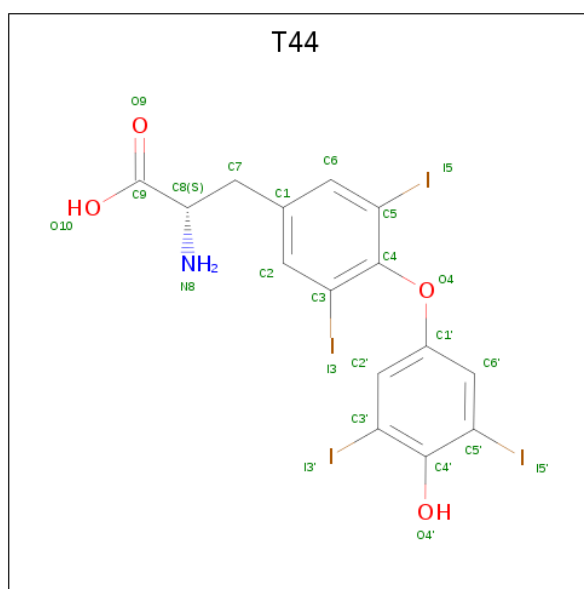
- Molecule 1 is a protein called TRANSTHYRETIN.

Mol	Chain	Residues	Atoms					ZeroOcc	AltConf	Trace
1	1	127	Total	C	N	O	S	0	9	0
			999	631	165	199	4			
1	2	127	Total	C	N	O	S	0	5	0
			991	627	162	198	4			

There are 2 discrepancies between the modelled and reference sequences:

Chain	Residue	Modelled	Actual	Comment	Reference
1	30	MET	VAL	MICROHETEROGENEITY	UNP P02766
2	30	MET	VAL	MICROHETEROGENEITY	UNP P02766

- Molecule 2 is 3,5,3',5'-TETRAIODO-L-THYRONINE (three-letter code: T44) (formula: C₁₅H₁₁I₄NO₄).



Mol	Chain	Residues	Atoms					ZeroOcc	AltConf
2	1	1	Total	C	I	N	O	0	0
			24	15	4	1	4		

Continued on next page...

Continued from previous page...

Mol	Chain	Residues	Atoms					ZeroOcc	AltConf
2	2	1	Total	C	I	N	O	0	0
			24	15	4	1	4		

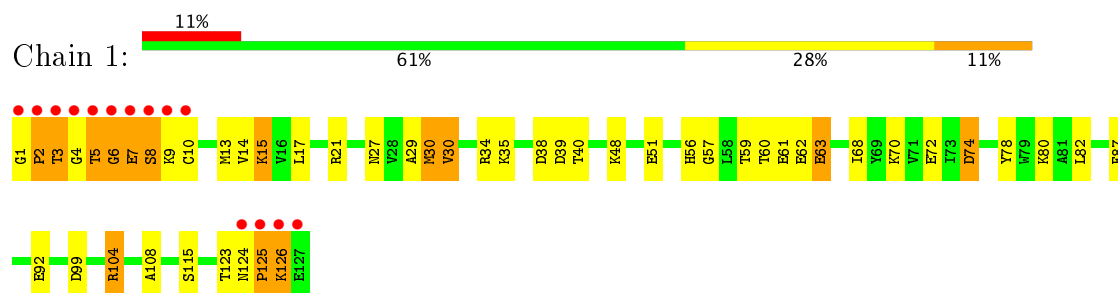
- Molecule 3 is water.

Mol	Chain	Residues	Atoms		ZeroOcc	AltConf
3	1	123	Total	O	0	0
			123	123		
3	2	113	Total	O	0	0
			113	113		

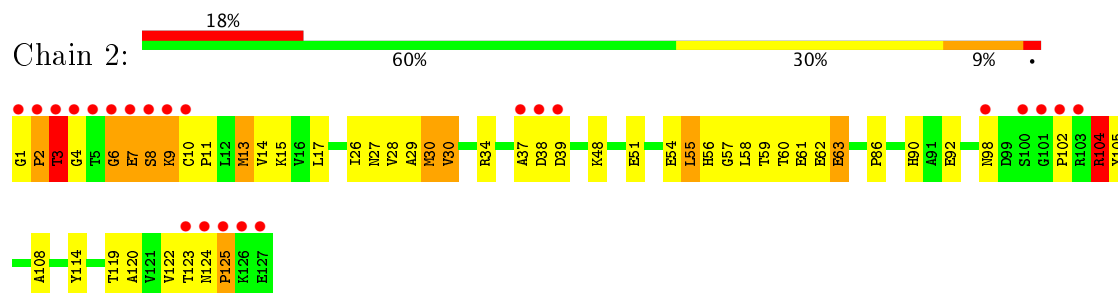
3 Residue-property plots [i](#)

These plots are drawn for all protein, RNA and DNA chains in the entry. The first graphic for a chain summarises the proportions of the various outlier classes displayed in the second graphic. The second graphic shows the sequence view annotated by issues in geometry and electron density. Residues are color-coded according to the number of geometric quality criteria for which they contain at least one outlier: green = 0, yellow = 1, orange = 2 and red = 3 or more. A red dot above a residue indicates a poor fit to the electron density ($RSRZ > 2$). Stretches of 2 or more consecutive residues without any outlier are shown as a green connector. Residues present in the sample, but not in the model, are shown in grey.

• Molecule 1: TRANSTHYRETIN



• Molecule 1: TRANSTHYRETIN



4 Data and refinement statistics

Property	Value	Source
Space group	P 2 ₁ 2 ₁ 2	Depositor
Cell constants a, b, c, α , β , γ	43.64Å 86.18Å 65.60Å 90.00° 90.00° 90.00°	Depositor
Resolution (Å)	5.00 – 1.70 5.00 – 1.76	Depositor EDS
% Data completeness (in resolution range)	(Not available) (5.00-1.70) 85.7 (5.00-1.76)	Depositor EDS
R_{merge}	(Not available)	Depositor
R_{sym}	(Not available)	Depositor
$\langle I/\sigma(I) \rangle$ ¹	1.77 (at 1.76Å)	Xtriage
Refinement program	PROLSQ	Depositor
R, R_{free}	0.184 , (Not available) 0.182 , (Not available)	Depositor DCC
R_{free} test set	No test flags present.	DCC
Wilson B-factor (Å ²)	21.2	Xtriage
Anisotropy	0.163	Xtriage
Bulk solvent k_{sol} (e/Å ³), B_{sol} (Å ²)	0.47 , 129.9	EDS
L-test for twinning ²	$\langle L \rangle = 0.49$, $\langle L^2 \rangle = 0.32$	Xtriage
Estimated twinning fraction	No twinning to report.	Xtriage
F_o, F_c correlation	0.97	EDS
Total number of atoms	2274	wwPDB-VP
Average B, all atoms (Å ²)	27.0	wwPDB-VP

Xtriage's analysis on translational NCS is as follows:

¹Intensities estimated from amplitudes.

²Theoretical values of $\langle |L| \rangle$, $\langle L^2 \rangle$ for acentric reflections are 0.5, 0.333 respectively for untwinned datasets, and 0.375, 0.2 for perfectly twinned datasets.

5 Model quality

5.1 Standard geometry

Bond lengths and bond angles in the following residue types are not validated in this section: T44

The Z score for a bond length (or angle) is the number of standard deviations the observed value is removed from the expected value. A bond length (or angle) with $|Z| > 5$ is considered an outlier worth inspection. RMSZ is the root-mean-square of all Z scores of the bond lengths (or angles).

Mol	Chain	Bond lengths		Bond angles	
		RMSZ	$\# Z > 5$	RMSZ	$\# Z > 5$
1	1	1.04	1/1069 (0.1%)	1.48	10/1449 (0.7%)
1	2	0.99	1/1037 (0.1%)	1.40	5/1409 (0.4%)
All	All	1.02	2/2106 (0.1%)	1.44	15/2858 (0.5%)

Chiral center outliers are detected by calculating the chiral volume of a chiral center and verifying if the center is modelled as a planar moiety or with the opposite hand. A planarity outlier is detected by checking planarity of atoms in a peptide group, atoms in a mainchain group or atoms of a sidechain that are expected to be planar.

Mol	Chain	#Chirality outliers	#Planarity outliers
1	2	0	2

All (2) bond length outliers are listed below:

Mol	Chain	Res	Type	Atoms	Z	Observed(Å)	Ideal(Å)
1	2	63	GLU	CD-OE2	8.32	1.34	1.25
1	1	63	GLU	CD-OE1	6.43	1.32	1.25

All (15) bond angle outliers are listed below:

Mol	Chain	Res	Type	Atoms	Z	Observed(°)	Ideal(°)
1	2	34	ARG	NE-CZ-NH1	10.04	125.32	120.30
1	1	125	PRO	N-CA-C	7.39	131.32	112.10
1	1	30[A]	MET	CA-CB-CG	6.79	124.84	113.30
1	1	74[A]	ASP	CB-CG-OD1	-6.49	112.46	118.30
1	1	74[B]	ASP	CB-CG-OD1	-6.49	112.46	118.30
1	1	34	ARG	NE-CZ-NH2	-6.33	117.14	120.30
1	2	34	ARG	CD-NE-CZ	6.32	132.45	123.60
1	1	104	ARG	NE-CZ-NH1	6.21	123.41	120.30
1	1	29	ALA	O-C-N	5.97	132.25	122.70

Continued on next page...

Continued from previous page...

Mol	Chain	Res	Type	Atoms	Z	Observed(°)	Ideal(°)
1	1	104	ARG	NE-CZ-NH2	-5.66	117.47	120.30
1	2	114	TYR	CB-CG-CD1	-5.58	117.65	121.00
1	1	99	ASP	CB-CG-OD2	-5.44	113.40	118.30
1	2	3	THR	CA-CB-CG2	5.40	119.96	112.40
1	1	51	GLU	CB-CG-CD	5.37	128.70	114.20
1	2	104	ARG	NE-CZ-NH1	5.18	122.89	120.30

There are no chirality outliers.

All (2) planarity outliers are listed below:

Mol	Chain	Res	Type	Group
1	2	29	ALA	Mainchain
1	2	30[A]	MET	Mainchain

5.2 Too-close contacts ⓘ

In the following table, the Non-H and H(model) columns list the number of non-hydrogen atoms and hydrogen atoms in the chain respectively. The H(added) column lists the number of hydrogen atoms added and optimized by MolProbity. The Clashes column lists the number of clashes within the asymmetric unit, whereas Symm-Clashes lists symmetry related clashes.

Mol	Chain	Non-H	H(model)	H(added)	Clashes	Symm-Clashes
1	1	999	0	965	90	0
1	2	991	0	954	77	0
2	1	24	0	10	11	0
2	2	24	0	9	15	0
3	1	123	0	0	10	0
3	2	113	0	0	6	0
All	All	2274	0	1938	166	0

The all-atom clashscore is defined as the number of clashes found per 1000 atoms (including hydrogen atoms). The all-atom clashscore for this structure is 42.

All (166) close contacts within the same asymmetric unit are listed below, sorted by their clash magnitude.

Atom-1	Atom-2	Interatomic distance (Å)	Clash overlap (Å)
1:2:27[B]:ASN:ND2	1:2:48:LYS:HE2	1.46	1.30
1:2:15:LYS:HD3	2:2:129:T44:C1	1.70	1.20
1:2:15:LYS:HD3	2:2:129:T44:C6	1.73	1.17

Continued on next page...

Continued from previous page...

Atom-1	Atom-2	Interatomic distance (Å)	Clash overlap (Å)
1:1:6:GLY:H	1:1:60:THR:HG23	1.11	1.16
1:2:15:LYS:CD	2:2:129:T44:C1	2.33	1.04
1:1:15:LYS:HD2	2:1:128:T44:H71	1.40	1.01
1:1:15:LYS:HD3	2:1:128:T44:C1	1.90	1.00
1:1:5:THR:HA	1:1:63:GLU:OE1	1.63	0.98
1:2:27[B]:ASN:HD21	1:2:48:LYS:HE2	1.23	0.96
1:1:2:PRO:HA	1:1:61:GLU:HB3	1.49	0.94
1:2:9:LYS:HG2	1:2:61:GLU:HG3	1.50	0.93
1:2:51[B]:GLU:OE2	3:2:240:HOH:O	1.86	0.93
1:2:6:GLY:O	1:2:7:GLU:HB2	1.69	0.90
1:2:54[B]:GLU:OE2	2:2:129:T44:H8	1.74	0.88
1:1:7:GLU:HB3	1:1:57:GLY:HA2	1.56	0.87
1:2:27[B]:ASN:ND2	1:2:48:LYS:CE	2.37	0.85
1:2:27[B]:ASN:HD21	1:2:48:LYS:CE	1.90	0.84
1:1:15:LYS:CD	2:1:128:T44:H71	2.08	0.84
1:1:17:LEU:HG	2:1:128:T44:I5'	2.49	0.83
1:1:74[B]:ASP:HB3	3:1:251:HOH:O	1.78	0.83
1:2:15:LYS:CD	2:2:129:T44:C6	2.56	0.82
1:1:4:GLY:O	1:1:5:THR:HB	1.80	0.79
1:1:15:LYS:HD3	2:1:128:T44:C2	2.13	0.79
1:2:54[B]:GLU:OE2	2:2:129:T44:C8	2.31	0.78
1:1:104:ARG:HG3	1:1:125:PRO:HB3	1.64	0.78
1:2:7:GLU:N	1:2:60:THR:HG23	1.99	0.77
1:2:102:PRO:HB2	1:2:122:VAL:HG12	1.67	0.77
1:1:38:ASP:OD2	1:1:40:THR:HG23	1.86	0.75
1:1:7:GLU:H	1:1:60:THR:HG22	1.51	0.75
1:2:51[A]:GLU:OE2	3:2:240:HOH:O	2.05	0.75
1:2:8:SER:HA	1:2:57:GLY:HA2	1.68	0.75
1:1:8:SER:HB2	1:1:61:GLU:H	1.53	0.74
1:2:7:GLU:O	1:2:8:SER:HB2	1.86	0.74
1:1:6:GLY:N	1:1:60:THR:HG23	1.96	0.73
1:1:6:GLY:H	1:1:60:THR:CG2	1.97	0.73
1:2:3:THR:CG2	1:2:4:GLY:H	2.01	0.72
1:1:8:SER:CB	1:1:61:GLU:H	2.05	0.70
1:2:17:LEU:HD12	2:2:129:T44:I5'	2.62	0.69
1:2:7:GLU:O	1:2:8:SER:CB	2.40	0.69
1:2:62:GLU:HG2	3:2:229:HOH:O	1.91	0.69
1:1:72[A]:GLU:OE2	1:1:92:GLU:OE2	2.12	0.68
1:2:9:LYS:HG2	1:2:61:GLU:CG	2.22	0.67
1:2:6:GLY:HA2	1:2:60:THR:H	1.57	0.67
1:1:15:LYS:CD	2:1:128:T44:C7	2.73	0.66

Continued on next page...

Continued from previous page...

Atom-1	Atom-2	Interatomic distance (Å)	Clash overlap (Å)
2:2:129:T44:N8	3:2:210:HOH:O	2.27	0.66
1:2:6:GLY:O	1:2:7:GLU:CB	2.43	0.66
1:2:55:LEU:HD13	1:2:58:LEU:HD21	1.77	0.66
1:2:3:THR:HA	1:2:60:THR:CG2	2.26	0.66
1:1:78:TYR:O	1:1:82:LEU:HD13	1.96	0.64
1:2:10:CYS:HB3	1:2:104:ARG:NH1	2.11	0.64
1:2:3:THR:OG1	1:2:9:LYS:HD2	1.97	0.64
1:2:14:VAL:HG11	1:2:30[A]:MET:SD	2.37	0.64
1:1:108:ALA:HB1	2:1:128:T44:I5'	2.68	0.64
1:2:27[B]:ASN:ND2	3:2:214:HOH:O	2.21	0.64
1:2:6:GLY:HA2	1:2:60:THR:N	2.12	0.63
1:1:21:ARG:NH1	1:1:82:LEU:HD21	2.13	0.63
1:1:15:LYS:CD	2:1:128:T44:C1	2.75	0.62
1:2:108:ALA:HB1	2:2:129:T44:I5'	2.69	0.62
1:1:4:GLY:O	1:1:5:THR:CB	2.48	0.61
1:2:17:LEU:HG	2:2:129:T44:I5'	2.71	0.61
1:1:3:THR:HG21	3:1:220:HOH:O	2.00	0.60
1:2:3:THR:HA	1:2:60:THR:HG22	1.83	0.60
1:1:21:ARG:HH11	1:1:82:LEU:HD21	1.67	0.60
1:1:2:PRO:HB3	1:1:62:GLU:CB	2.31	0.60
1:1:9:LYS:HD2	1:1:126:LYS:HG3	1.84	0.60
1:2:7:GLU:H	1:2:59:THR:C	2.05	0.60
1:1:21:ARG:NH2	3:1:133:HOH:O	2.34	0.59
1:1:15:LYS:HD3	2:1:128:T44:C7	2.32	0.59
1:2:124:ASN:H	1:2:125:PRO:HD2	1.68	0.57
1:1:115:SER:HB2	1:2:119:THR:HG23	1.87	0.57
1:1:27[A]:ASN:ND2	3:1:155:HOH:O	2.38	0.57
1:1:7:GLU:HA	1:1:59:THR:O	2.04	0.56
1:1:104:ARG:NH2	1:1:123:THR:HG21	2.19	0.56
1:2:124:ASN:HB2	1:2:125:PRO:CD	2.36	0.56
1:2:7:GLU:H	1:2:60:THR:HG23	1.71	0.56
1:2:3:THR:CG2	1:2:4:GLY:N	2.68	0.56
1:1:2:PRO:HB3	1:1:62:GLU:HB2	1.87	0.55
1:2:1:GLY:HA3	1:2:8:SER:HB3	1.88	0.55
1:1:125:PRO:O	1:1:126:LYS:HB2	2.05	0.55
1:2:90:HIS:NE2	1:2:92:GLU:OE2	2.38	0.55
1:1:6:GLY:C	1:1:7:GLU:HG2	2.26	0.55
1:2:17:LEU:CD1	2:2:129:T44:I5'	3.25	0.54
1:1:7:GLU:N	1:1:60:THR:HG22	2.19	0.54
1:1:48:LYS:HE2	3:1:136:HOH:O	2.08	0.54
1:2:2:PRO:O	1:2:3:THR:CB	2.56	0.54

Continued on next page...

Continued from previous page...

Atom-1	Atom-2	Interatomic distance (Å)	Clash overlap (Å)
1:2:104:ARG:HD2	1:2:105:TYR:N	2.23	0.53
1:1:4:GLY:H	1:1:60:THR:CB	2.20	0.53
1:1:3:THR:HB	1:1:60:THR:CG2	2.39	0.53
1:2:6:GLY:HA3	1:2:63:GLU:OE1	2.08	0.53
1:1:70:LYS:HD2	1:1:92:GLU:OE1	2.09	0.53
1:2:3:THR:HG22	1:2:4:GLY:H	1.72	0.52
1:1:13[B]:MET:CG	1:1:56:HIS:CD2	2.93	0.52
1:2:10:CYS:N	1:2:11:PRO:CD	2.73	0.52
1:1:1:GLY:N	3:1:228:HOH:O	2.41	0.51
1:1:8:SER:H	1:1:60:THR:HA	1.75	0.51
1:2:124:ASN:CB	1:2:125:PRO:CD	2.89	0.51
1:2:102:PRO:HB3	1:2:123:THR:C	2.31	0.51
1:1:8:SER:OG	1:1:9:LYS:N	2.43	0.50
1:2:3:THR:HG22	1:2:4:GLY:N	2.26	0.50
1:2:26:ILE:HG21	1:2:51[A]:GLU:OE1	2.10	0.50
1:2:17:LEU:CG	2:2:129:T44:I5'	3.29	0.50
1:1:14:VAL:HG11	1:1:30[A]:MET:SD	2.52	0.49
1:1:2:PRO:O	1:1:3:THR:CB	2.61	0.49
1:1:27[A]:ASN:ND2	3:1:169:HOH:O	2.45	0.49
1:2:3:THR:HA	1:2:60:THR:HG21	1.95	0.49
1:1:35[B]:LYS:NZ	3:1:172:HOH:O	2.41	0.48
1:1:5:THR:CA	1:1:63:GLU:OE1	2.50	0.48
1:1:15:LYS:HD2	2:1:128:T44:C7	2.26	0.48
1:1:13[B]:MET:HG3	1:1:56:HIS:HD2	1.78	0.48
1:1:35[A]:LYS:NZ	3:1:246:HOH:O	2.46	0.47
1:2:15:LYS:HD3	2:2:129:T44:C2	2.38	0.47
1:2:13[B]:MET:HG3	1:2:56:HIS:CD2	2.50	0.46
1:1:72[A]:GLU:HG3	1:1:92:GLU:CD	2.36	0.46
1:2:54[B]:GLU:OE1	2:2:129:T44:N8	2.47	0.46
1:1:5:THR:H	1:1:60:THR:HG23	1.81	0.46
1:2:104:ARG:HG2	1:2:104:ARG:HH11	1.81	0.46
1:2:124:ASN:HB2	1:2:125:PRO:HD2	1.96	0.46
1:2:10:CYS:O	1:2:104:ARG:NH1	2.48	0.46
1:2:3:THR:HG23	1:2:4:GLY:H	1.79	0.45
1:1:6:GLY:HA3	3:1:220:HOH:O	2.17	0.45
1:1:87:PHE:CE2	1:2:120:ALA:HB2	2.52	0.44
1:1:2:PRO:O	1:1:3:THR:OG1	2.26	0.44
1:2:15:LYS:O	1:2:108:ALA:HA	2.18	0.44
1:2:2:PRO:HB2	1:2:3:THR:H	1.54	0.44
1:1:35[B]:LYS:HE2	1:1:68:ILE:HB	2.00	0.44
1:1:6:GLY:O	1:1:57:GLY:HA2	2.17	0.43

Continued on next page...

Continued from previous page...

Atom-1	Atom-2	Interatomic distance (Å)	Clash overlap (Å)
1:1:5:THR:H	1:1:60:THR:CG2	2.31	0.43
1:2:15:LYS:HE2	2:2:129:T44:C2	2.47	0.43
1:1:4:GLY:N	1:1:60:THR:OG1	2.45	0.43
1:1:124:ASN:HA	1:1:125:PRO:HD3	1.88	0.43
1:1:2:PRO:CA	1:1:61:GLU:HB3	2.34	0.43
1:1:17:LEU:CG	2:1:128:T44:I5'	3.32	0.43
1:1:21:ARG:HH11	1:1:82:LEU:CD2	2.30	0.43
1:1:3:THR:HB	1:1:60:THR:HG21	1.99	0.43
1:2:10:CYS:HB3	1:2:104:ARG:HH12	1.84	0.42
1:1:8:SER:OG	1:1:61:GLU:HB2	2.19	0.41
1:2:6:GLY:C	1:2:60:THR:HG23	2.40	0.41
1:1:9:LYS:HE3	1:1:125:PRO:HB2	2.01	0.41
1:2:28:VAL:O	1:2:48:LYS:HA	2.20	0.41
1:1:13[B]:MET:HE3	1:1:14:VAL:O	2.20	0.41
1:2:7:GLU:N	1:2:59:THR:HA	2.35	0.41
1:1:104:ARG:HH21	1:1:123:THR:HG21	1.84	0.41
1:1:1:GLY:O	1:1:2:PRO:O	2.38	0.41
1:2:48:LYS:HD2	3:2:165:HOH:O	2.20	0.41
1:1:9:LYS:HD2	1:1:126:LYS:CG	2.50	0.41
1:2:2:PRO:O	1:2:3:THR:OG1	2.36	0.41
1:2:13[B]:MET:HG3	1:2:56:HIS:HD2	1.86	0.41
1:2:8:SER:CA	1:2:57:GLY:HA2	2.45	0.41
1:1:125:PRO:O	1:1:126:LYS:CB	2.69	0.41
1:2:124:ASN:N	1:2:125:PRO:HD2	2.31	0.40
1:1:9:LYS:HE2	1:1:9:LYS:HB2	1.84	0.40
1:2:37:ALA:C	1:2:39:ASP:H	2.23	0.40

There are no symmetry-related clashes.

5.3 Torsion angles [i](#)

5.3.1 Protein backbone [i](#)

In the following table, the Percentiles column shows the percent Ramachandran outliers of the chain as a percentile score with respect to all X-ray entries followed by that with respect to entries of similar resolution.

The Analysed column shows the number of residues for which the backbone conformation was analysed, and the total number of residues.

Mol	Chain	Analysed	Favoured	Allowed	Outliers	Percentiles	
1	1	132/128 (103%)	122 (92%)	3 (2%)	7 (5%)	2	0
1	2	128/128 (100%)	115 (90%)	7 (6%)	6 (5%)	3	0
All	All	260/256 (102%)	237 (91%)	10 (4%)	13 (5%)	2	0

All (13) Ramachandran outliers are listed below:

Mol	Chain	Res	Type
1	1	2	PRO
1	1	3	THR
1	1	5	THR
1	1	8	SER
1	2	2	PRO
1	2	3	THR
1	2	7	GLU
1	2	8	SER
1	1	6	GLY
1	1	7	GLU
1	2	6	GLY
1	2	125	PRO
1	1	126	LYS

5.3.2 Protein sidechains ⓘ

In the following table, the Percentiles column shows the percent sidechain outliers of the chain as a percentile score with respect to all X-ray entries followed by that with respect to entries of similar resolution.

The Analysed column shows the number of residues for which the sidechain conformation was analysed, and the total number of residues.

Mol	Chain	Analysed	Rotameric	Outliers	Percentiles	
1	1	114/106 (108%)	111 (97%)	3 (3%)	51	31
1	2	110/106 (104%)	102 (93%)	8 (7%)	16	4
All	All	224/212 (106%)	213 (95%)	11 (5%)	30	10

All (11) residues with a non-rotameric sidechain are listed below:

Mol	Chain	Res	Type
1	1	10	CYS
1	1	15	LYS
1	1	39	ASP

Continued on next page...

Continued from previous page...

Mol	Chain	Res	Type
1	2	9	LYS
1	2	13[A]	MET
1	2	13[B]	MET
1	2	38	ASP
1	2	55	LEU
1	2	86	PRO
1	2	98	ASN
1	2	104	ARG

Some sidechains can be flipped to improve hydrogen bonding and reduce clashes. All (1) such sidechains are listed below:

Mol	Chain	Res	Type
1	1	56	HIS

5.3.3 RNA [i](#)

There are no RNA molecules in this entry.

5.4 Non-standard residues in protein, DNA, RNA chains [i](#)

There are no non-standard protein/DNA/RNA residues in this entry.

5.5 Carbohydrates [i](#)

There are no carbohydrates in this entry.

5.6 Ligand geometry [i](#)

2 ligands are modelled in this entry.

In the following table, the Counts columns list the number of bonds (or angles) for which Mogul statistics could be retrieved, the number of bonds (or angles) that are observed in the model and the number of bonds (or angles) that are defined in the Chemical Component Dictionary. The Link column lists molecule types, if any, to which the group is linked. The Z score for a bond length (or angle) is the number of standard deviations the observed value is removed from the expected value. A bond length (or angle) with $|Z| > 2$ is considered an outlier worth inspection. RMSZ is the root-mean-square of all Z scores of the bond lengths (or angles).

Mol	Type	Chain	Res	Link	Bond lengths			Bond angles		
					Counts	RMSZ	# Z > 2	Counts	RMSZ	# Z > 2
2	T44	1	128	-	21,25,25	0.89	1 (4%)	31,36,36	1.83	6 (19%)
2	T44	2	129	1	21,25,25	1.32	2 (9%)	31,36,36	2.07	10 (32%)

In the following table, the Chirals column lists the number of chiral outliers, the number of chiral centers analysed, the number of these observed in the model and the number defined in the Chemical Component Dictionary. Similar counts are reported in the Torsion and Rings columns. '-' means no outliers of that kind were identified.

Mol	Type	Chain	Res	Link	Chirals	Torsions	Rings
2	T44	1	128	-	-	0/8/12/12	0/2/2/2
2	T44	2	129	1	-	0/8/12/12	0/2/2/2

All (3) bond length outliers are listed below:

Mol	Chain	Res	Type	Atoms	Z	Observed(Å)	Ideal(Å)
2	2	129	T44	C3-I3	-3.68	2.01	2.10
2	2	129	T44	C5-I5	-3.08	2.02	2.10
2	1	128	T44	C5'-I5'	-2.17	2.04	2.10

All (16) bond angle outliers are listed below:

Mol	Chain	Res	Type	Atoms	Z	Observed(°)	Ideal(°)
2	1	128	T44	C6'-C1'-C2'	-4.26	113.99	120.96
2	2	129	T44	C6-C1-C2	-4.18	112.95	118.96
2	2	129	T44	C6'-C1'-C2'	-4.08	114.29	120.96
2	1	128	T44	C6-C1-C2	-3.53	113.87	118.96
2	2	129	T44	C4-C5-I5	-3.09	113.96	119.42
2	2	129	T44	C5-C4-C3	-3.07	111.11	118.67
2	1	128	T44	C1-C2-C3	2.08	124.69	120.43
2	2	129	T44	C1'-C6'-C5'	2.25	124.11	119.11
2	1	128	T44	C1'-C6'-C5'	2.43	124.50	119.11
2	2	129	T44	O4-C4-C5	2.50	124.41	120.30
2	2	129	T44	O4-C4-C3	2.54	124.46	120.30
2	2	129	T44	C1'-O4-C4	2.68	123.08	118.53
2	2	129	T44	C1-C7-C8	3.03	120.69	114.43
2	1	128	T44	C7-C1-C6	3.21	126.28	120.43
2	1	128	T44	C1-C7-C8	3.33	121.32	114.43
2	2	129	T44	C7-C1-C6	4.02	127.75	120.43

There are no chirality outliers.

There are no torsion outliers.

There are no ring outliers.

2 monomers are involved in 26 short contacts:

Mol	Chain	Res	Type	Clashes	Symm-Clashes
2	1	128	T44	11	0
2	2	129	T44	15	0

5.7 Other polymers [i](#)

There are no such residues in this entry.

5.8 Polymer linkage issues [i](#)

The following chains have linkage breaks:

Mol	Chain	Number of breaks
1	2	1

All chain breaks are listed below:

Model	Chain	Residue-1	Atom-1	Residue-2	Atom-2	Distance (Å)
1	2	30[A]:MET	C	31:HIS	N	1.14

6 Fit of model and data

6.1 Protein, DNA and RNA chains

In the following table, the column labelled ‘#RSRZ> 2’ contains the number (and percentage) of RSRZ outliers, followed by percent RSRZ outliers for the chain as percentile scores relative to all X-ray entries and entries of similar resolution. The OWAB column contains the minimum, median, 95th percentile and maximum values of the occupancy-weighted average B-factor per residue. The column labelled ‘Q< 0.9’ lists the number of (and percentage) of residues with an average occupancy less than 0.9.

Mol	Chain	Analysed	<RSRZ>	#RSRZ>2	OWAB(Å ²)	Q<0.9
1	1	128/128 (100%)	0.18	14 (10%) 6 7	15, 22, 44, 49	27 (21%)
1	2	128/128 (100%)	0.59	23 (17%) 2 1	16, 27, 44, 61	33 (25%)
All	All	256/256 (100%)	0.39	37 (14%) 3 3	15, 24, 47, 61	60 (23%)

All (37) RSRZ outliers are listed below:

Mol	Chain	Res	Type	RSRZ
1	2	126	LYS	12.4
1	2	127	GLU	7.8
1	2	3	THR	7.3
1	2	1	GLY	7.3
1	1	5	THR	7.3
1	2	5	THR	6.9
1	2	101	GLY	6.9
1	2	125	PRO	6.6
1	1	4	GLY	5.1
1	1	8	SER	5.1
1	1	127	GLU	4.8
1	2	10	CYS	4.8
1	2	6	GLY	4.7
1	2	2	PRO	4.4
1	1	6	GLY	4.2
1	2	4	GLY	4.2
1	1	9	LYS	4.1
1	2	37	ALA	4.1
1	2	7	GLU	3.8
1	1	1	GLY	3.7
1	1	2	PRO	3.7
1	1	10	CYS	3.5
1	1	125	PRO	3.5
1	1	3	THR	3.4

Continued on next page...

Continued from previous page...

Mol	Chain	Res	Type	RSRZ
1	1	7	GLU	2.7
1	2	124	ASN	2.7
1	2	9	LYS	2.5
1	1	126	LYS	2.4
1	2	8	SER	2.3
1	1	124	ASN	2.3
1	2	98	ASN	2.2
1	2	39	ASP	2.2
1	2	103	ARG	2.2
1	2	102	PRO	2.2
1	2	100	SER	2.1
1	2	123	THR	2.1
1	2	38	ASP	2.1

6.2 Non-standard residues in protein, DNA, RNA chains [i](#)

There are no non-standard protein/DNA/RNA residues in this entry.

6.3 Carbohydrates [i](#)

There are no carbohydrates in this entry.

6.4 Ligands [i](#)

In the following table, the Atoms column lists the number of modelled atoms in the group and the number defined in the chemical component dictionary. LLDF column lists the quality of electron density of the group with respect to its neighbouring residues in protein, DNA or RNA chains. The B-factors column lists the minimum, median, 95th percentile and maximum values of B factors of atoms in the group. The column labelled 'Q< 0.9' lists the number of atoms with occupancy less than 0.9.

Mol	Type	Chain	Res	Atoms	RSCC	RSR	LLDF	B-factors(Å ²)	Q<0.9
2	T44	1	128	24/24	0.93	0.21	9.13	24,35,35,37	24
2	T44	2	129	24/24	0.92	0.22	0.77	29,35,35,39	24

6.5 Other polymers [i](#)

There are no such residues in this entry.