



Full wwPDB X-ray Structure Validation Report ⓘ

Feb 14, 2017 – 01:54 am GMT

PDB ID : 4EVI
Title : Crystal Structure Analysis of Coniferyl Alcohol 9-O-Methyltransferase from
Linum Nodiflorum in Complex with Coniferyl Alcohol 9-Methyl Ether and S
-Adenosyl-L-Homocysteine
Authors : Wolters, S.; Heine, A.; Petersen, M.
Deposited on : 2012-04-26
Resolution : 2.02 Å(reported)

This is a Full wwPDB X-ray Structure Validation Report for a publicly released PDB entry.

We welcome your comments at validation@mail.wwpdb.org

A user guide is available at

<http://wwpdb.org/validation/2016/XrayValidationReportHelp>

with specific help available everywhere you see the ⓘ symbol.

The following versions of software and data (see [references ⓘ](#)) were used in the production of this report:

MolProbity	:	4.02b-467
Mogul	:	1.7.2 (RC1), CSD as538be (2017)
Xtriage (Phenix)	:	1.9-1692
EDS	:	trunk28620
Percentile statistics	:	20161228.v01 (using entries in the PDB archive December 28th 2016)
Refmac	:	5.8.0135
CCP4	:	6.5.0
Ideal geometry (proteins)	:	Engh & Huber (2001)
Ideal geometry (DNA, RNA)	:	Parkinson et al. (1996)
Validation Pipeline (wwPDB-VP)	:	recalc28949

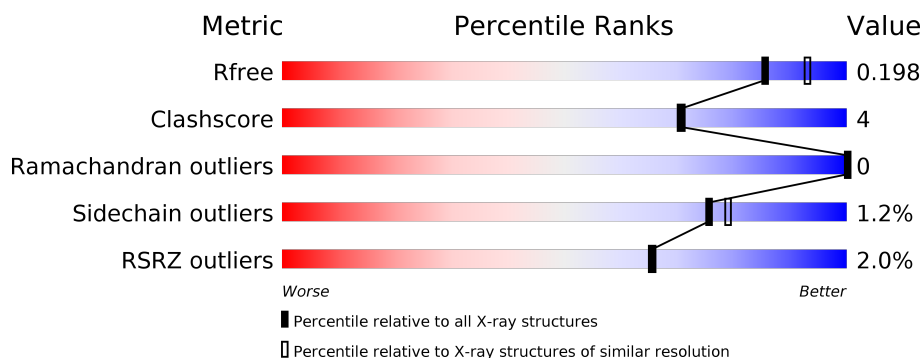
1 Overall quality at a glance

The following experimental techniques were used to determine the structure:

X-RAY DIFFRACTION

The reported resolution of this entry is 2.02 Å.

Percentile scores (ranging between 0-100) for global validation metrics of the entry are shown in the following graphic. The table shows the number of entries on which the scores are based.



Metric	Whole archive (#Entries)	Similar resolution (#Entries, resolution range(Å))
R_{free}	100719	8396 (2.04-2.00)
Clashscore	112137	9678 (2.04-2.00)
Ramachandran outliers	110173	9566 (2.04-2.00)
Sidechain outliers	110143	9565 (2.04-2.00)
RSRZ outliers	101464	8490 (2.04-2.00)

The table below summarises the geometric issues observed across the polymeric chains and their fit to the electron density. The red, orange, yellow and green segments on the lower bar indicate the fraction of residues that contain outliers for ≥ 3 , 2, 1 and 0 types of geometric quality criteria. A grey segment represents the fraction of residues that are not modelled. The numeric value for each fraction is indicated below the corresponding segment, with a dot representing fractions $\leq 5\%$. The upper red bar (where present) indicates the fraction of residues that have poor fit to the electron density. The numeric value is given above the bar.

Mol	Chain	Length	Quality of chain
1	A	388	
1	B	388	

The following table lists non-polymeric compounds, carbohydrate monomers and non-standard residues in protein, DNA, RNA chains that are outliers for geometric or electron-density-fit criteria:

Mol	Type	Chain	Res	Chirality	Geometry	Clashes	Electron density
3	C9M	A	402	-	-	X	-
4	GOL	A	403	-	-	-	X
4	GOL	B	402	-	-	X	X
4	GOL	B	404	-	-	X	X

2 Entry composition

There are 6 unique types of molecules in this entry. The entry contains 6145 atoms, of which 0 are hydrogens and 0 are deuteriums.

In the tables below, the ZeroOcc column contains the number of atoms modelled with zero occupancy, the AltConf column contains the number of residues with at least one atom in alternate conformation and the Trace column contains the number of residues modelled with at most 2 atoms.

- Molecule 1 is a protein called Coniferyl alcohol 9-O-methyltransferase.

Mol	Chain	Residues	Atoms					ZeroOcc	AltConf	Trace
1	A	360	Total	C	N	O	S	0	11	0
			2846	1825	478	522	21			
1	B	354	Total	C	N	O	S	0	6	0
			2773	1784	464	503	22			

There are 40 discrepancies between the modelled and reference sequences:

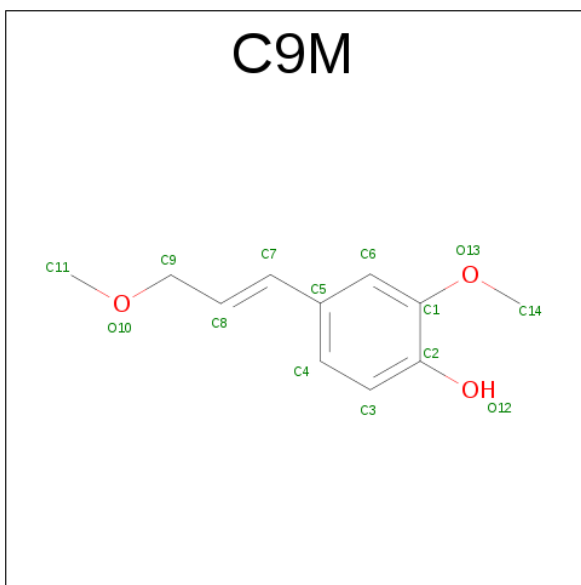
Chain	Residue	Modelled	Actual	Comment	Reference
A	-19	MET	-	EXPRESSION TAG	UNP A6XNE6
A	-18	GLY	-	EXPRESSION TAG	UNP A6XNE6
A	-17	SER	-	EXPRESSION TAG	UNP A6XNE6
A	-16	SER	-	EXPRESSION TAG	UNP A6XNE6
A	-15	HIS	-	EXPRESSION TAG	UNP A6XNE6
A	-14	HIS	-	EXPRESSION TAG	UNP A6XNE6
A	-13	HIS	-	EXPRESSION TAG	UNP A6XNE6
A	-12	HIS	-	EXPRESSION TAG	UNP A6XNE6
A	-11	HIS	-	EXPRESSION TAG	UNP A6XNE6
A	-10	HIS	-	EXPRESSION TAG	UNP A6XNE6
A	-9	SER	-	EXPRESSION TAG	UNP A6XNE6
A	-8	SER	-	EXPRESSION TAG	UNP A6XNE6
A	-7	GLY	-	EXPRESSION TAG	UNP A6XNE6
A	-6	LEU	-	EXPRESSION TAG	UNP A6XNE6
A	-5	VAL	-	EXPRESSION TAG	UNP A6XNE6
A	-4	PRO	-	EXPRESSION TAG	UNP A6XNE6
A	-3	ARG	-	EXPRESSION TAG	UNP A6XNE6
A	-2	GLY	-	EXPRESSION TAG	UNP A6XNE6
A	-1	SER	-	EXPRESSION TAG	UNP A6XNE6
A	0	HIS	-	EXPRESSION TAG	UNP A6XNE6
B	-19	MET	-	EXPRESSION TAG	UNP A6XNE6
B	-18	GLY	-	EXPRESSION TAG	UNP A6XNE6
B	-17	SER	-	EXPRESSION TAG	UNP A6XNE6
B	-16	SER	-	EXPRESSION TAG	UNP A6XNE6
B	-15	HIS	-	EXPRESSION TAG	UNP A6XNE6

Continued on next page...

Chain	Residue	Modelled	Actual	Comment	Reference
B	-14	HIS	-	EXPRESSION TAG	UNP A6XNE6
B	-13	HIS	-	EXPRESSION TAG	UNP A6XNE6
B	-12	HIS	-	EXPRESSION TAG	UNP A6XNE6
B	-11	HIS	-	EXPRESSION TAG	UNP A6XNE6
B	-10	HIS	-	EXPRESSION TAG	UNP A6XNE6
B	-9	SER	-	EXPRESSION TAG	UNP A6XNE6
B	-8	SER	-	EXPRESSION TAG	UNP A6XNE6
B	-7	GLY	-	EXPRESSION TAG	UNP A6XNE6
B	-6	LEU	-	EXPRESSION TAG	UNP A6XNE6
B	-5	VAL	-	EXPRESSION TAG	UNP A6XNE6
B	-4	PRO	-	EXPRESSION TAG	UNP A6XNE6
B	-3	ARG	-	EXPRESSION TAG	UNP A6XNE6
B	-2	GLY	-	EXPRESSION TAG	UNP A6XNE6
B	-1	SER	-	EXPRESSION TAG	UNP A6XNE6
B	0	HIS	-	EXPRESSION TAG	UNP A6XNE6

- # SAH
-
- The image displays the chemical structure of S-Adenosylmethionine (SAM), a key molecule in biological methylation reactions. The structure is composed of several interconnected rings and functional groups, with atoms labeled for identification:
- Adenosine Ring:** A purine ring system (consisting of a pyrimidine and an imidazole ring fused together) is shown at the top. Atoms are labeled with blue text: N16 (amino group), C8, C6, N17, C8, N11, C2, N13, C4, N19, C1(Y), C2(Y), C3(Y), C4(Y), and C5'.
 - Sulfonium Group:** A sulfur atom (S0) is bonded to the C5' of the adenosine ring and a methyl group (C6).
 - Methionine Side Chain:** The methyl group (C6) is part of a methionine side chain, which includes a methylene group (C6) and a chiral center (C4(S)) bonded to an amino group (NH2, labeled H) and a carboxylate group (COO-, labeled OXT).
 - Hydroxyl Groups:** Two hydroxyl groups (OH) are attached to the ribose sugar ring, labeled O2' and O3'.
- The structure is rendered in a 3D perspective, with bonds to the hydroxyl groups and the amino group shown with wedges and dashes to indicate stereochemistry.

- Molecule 3 is 2-METHOXY-4-[(1E)-3-METHOXYPROP-1-EN-1-YL]PHENOL (three-letter code: C9M) (formula: $C_{11}H_{14}O_3$).



Mol	Chain	Residues	Atoms			ZeroOcc	AltConf
3	A	1	Total	C	O	0	0
			14	11	3		

- Molecule 4 is GLYCEROL (three-letter code: GOL) (formula: $C_3H_8O_3$).



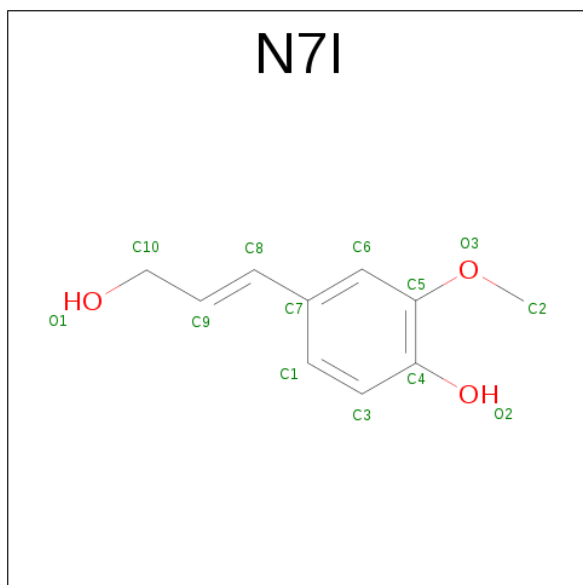
Mol	Chain	Residues	Atoms			ZeroOcc	AltConf
4	A	1	Total	C	O	0	0
			6	3	3		
4	B	1	Total	C	O	0	0
			6	3	3		
4	B	1	Total	C	O	0	0
			6	3	3		

Continued on next page...

Continued from previous page...

Mol	Chain	Residues	Atoms			ZeroOcc	AltConf
4	B	1	Total	C	O	0	0
			6	3	3		

- Molecule 5 is 4-[(1E)-3-HYDROXYPROP-1-EN-1-YL]-2-METHOXYPHENOL (three-letter code: N7I) (formula: C₁₀H₁₂O₃).



Mol	Chain	Residues	Atoms			ZeroOcc	AltConf
5	B	1	Total	C	O	0	0
			13	10	3		

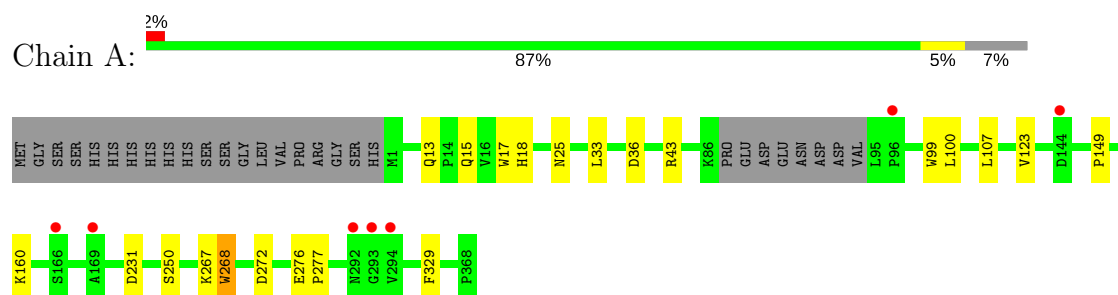
- Molecule 6 is water.

Mol	Chain	Residues	Atoms		ZeroOcc	AltConf
6	A	245	Total	O	0	0
			245	245		
6	B	204	Total	O	0	0
			204	204		

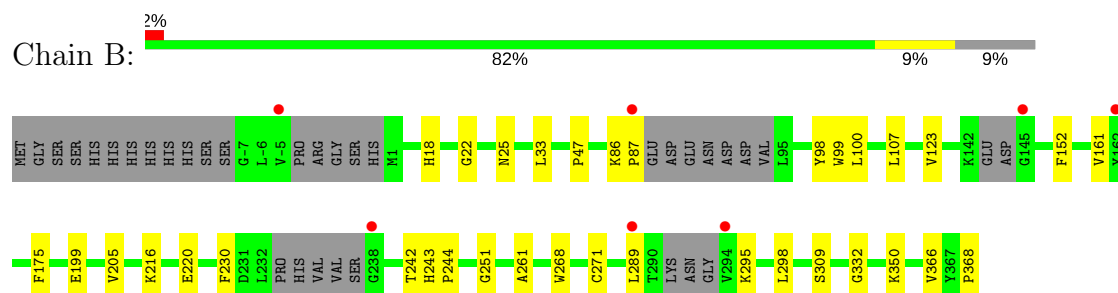
3 Residue-property plots [i](#)

These plots are drawn for all protein, RNA and DNA chains in the entry. The first graphic for a chain summarises the proportions of the various outlier classes displayed in the second graphic. The second graphic shows the sequence view annotated by issues in geometry and electron density. Residues are color-coded according to the number of geometric quality criteria for which they contain at least one outlier: green = 0, yellow = 1, orange = 2 and red = 3 or more. A red dot above a residue indicates a poor fit to the electron density ($RSRZ > 2$). Stretches of 2 or more consecutive residues without any outlier are shown as a green connector. Residues present in the sample, but not in the model, are shown in grey.

- Molecule 1: Coniferyl alcohol 9-O-methyltransferase



- Molecule 1: Coniferyl alcohol 9-O-methyltransferase



4 Data and refinement statistics

Property	Value	Source
Space group	P 21 21 21	Depositor
Cell constants a, b, c, α , β , γ	75.84Å 105.04Å 108.98Å 90.00° 90.00° 90.00°	Depositor
Resolution (Å)	9.34 – 2.02 9.34 – 2.02	Depositor EDS
% Data completeness (in resolution range)	99.5 (9.34-2.02) 99.6 (9.34-2.02)	Depositor EDS
R_{merge}	(Not available)	Depositor
R_{sym}	0.09	Depositor
$\langle I/\sigma(I) \rangle$ ¹	3.16 (at 2.02Å)	Xtriage
Refinement program	PHENIX (phenix.refine: 1.7.1_743)	Depositor
R, R_{free}	0.176 , 0.203 0.168 , 0.198	Depositor DCC
R_{free} test set	2901 reflections (5.07%)	DCC
Wilson B-factor (Å ²)	23.3	Xtriage
Anisotropy	0.255	Xtriage
Bulk solvent k_{sol} (e/Å ³), B_{sol} (Å ²)	0.48 , 67.0	EDS
L-test for twinning ²	$\langle L \rangle = 0.49$, $\langle L^2 \rangle = 0.33$	Xtriage
Estimated twinning fraction	0.017 for -h,l,k	Xtriage
F_o, F_c correlation	0.95	EDS
Total number of atoms	6145	wwPDB-VP
Average B, all atoms (Å ²)	25.0	wwPDB-VP

Xtriage's analysis on translational NCS is as follows: *The largest off-origin peak in the Patterson function is 3.99% of the height of the origin peak. No significant pseudotranslation is detected.*

¹Intensities estimated from amplitudes.

²Theoretical values of $\langle |L| \rangle$, $\langle L^2 \rangle$ for acentric reflections are 0.5, 0.333 respectively for untwinned datasets, and 0.375, 0.2 for perfectly twinned datasets.

5 Model quality

5.1 Standard geometry

Bond lengths and bond angles in the following residue types are not validated in this section: GOL, SAH, N7I, C9M

The Z score for a bond length (or angle) is the number of standard deviations the observed value is removed from the expected value. A bond length (or angle) with $|Z| > 5$ is considered an outlier worth inspection. RMSZ is the root-mean-square of all Z scores of the bond lengths (or angles).

Mol	Chain	Bond lengths		Bond angles	
		RMSZ	$\# Z > 5$	RMSZ	$\# Z > 5$
1	A	0.37	0/2936	0.48	0/3993
1	B	0.35	0/2851	0.48	0/3872
All	All	0.36	0/5787	0.48	0/7865

There are no bond length outliers.

There are no bond angle outliers.

There are no chirality outliers.

There are no planarity outliers.

5.2 Too-close contacts

In the following table, the Non-H and H(model) columns list the number of non-hydrogen atoms and hydrogen atoms in the chain respectively. The H(added) column lists the number of hydrogen atoms added and optimized by MolProbity. The Clashes column lists the number of clashes within the asymmetric unit, whereas Symm-Clashes lists symmetry related clashes.

Mol	Chain	Non-H	H(model)	H(added)	Clashes	Symm-Clashes
1	A	2846	0	2753	19	0
1	B	2773	0	2698	25	0
2	A	26	0	19	3	0
3	A	14	0	13	7	0
4	A	6	0	8	0	0
4	B	18	0	24	15	0
5	B	13	0	11	0	0
6	A	245	0	0	1	0
6	B	204	0	0	1	0
All	All	6145	0	5526	46	0

The all-atom clashscore is defined as the number of clashes found per 1000 atoms (including

hydrogen atoms). The all-atom clashscore for this structure is 4.

All (46) close contacts within the same asymmetric unit are listed below, sorted by their clash magnitude.

Atom-1	Atom-2	Interatomic distance (Å)	Clash overlap (Å)
1:A:268:TRP:O	3:A:402:C9M:H10	1.55	1.06
1:A:272:ASP:OD1	3:A:402:C9M:H9	1.59	1.01
1:B:25:ASN:HD21	4:B:402:GOL:H12	1.37	0.90
1:A:18:HIS:CD2	4:B:404:GOL:H32	2.22	0.75
1:A:25:ASN:HD22	4:B:404:GOL:H12	1.55	0.70
1:A:272:ASP:CG	3:A:402:C9M:H9	2.12	0.70
1:A:25:ASN:HD22	4:B:404:GOL:C1	2.10	0.65
1:A:25:ASN:ND2	4:B:404:GOL:H12	2.14	0.63
2:A:401:SAH:SD	3:A:402:C9M:H8	2.43	0.59
1:B:22:GLY:CA	4:B:404:GOL:H11	2.33	0.59
1:B:25:ASN:ND2	4:B:404:GOL:H2	2.17	0.58
1:A:18:HIS:HD2	4:B:404:GOL:H32	1.71	0.56
1:B:25:ASN:HD22	4:B:404:GOL:H2	1.72	0.54
1:A:123[B]:VAL:HG12	1:A:123[B]:VAL:O	2.08	0.53
1:B:22:GLY:HA3	4:B:404:GOL:H11	1.90	0.53
2:A:401:SAH:SD	3:A:402:C9M:C11	2.98	0.51
1:B:289:LEU:O	1:B:295:LYS:HA	2.10	0.51
1:B:25:ASN:ND2	4:B:402:GOL:H12	2.18	0.50
1:B:298:LEU:HB3	1:B:366:VAL:HB	1.94	0.50
1:B:123[B]:VAL:O	1:B:123[B]:VAL:HG12	2.11	0.50
1:B:22:GLY:HA2	4:B:404:GOL:H11	1.94	0.50
1:B:230:PHE:CE1	1:B:251:GLY:HA3	2.47	0.49
1:A:99:TRP:CG	1:A:100:LEU:N	2.80	0.49
1:B:25:ASN:HD21	4:B:402:GOL:C1	2.19	0.48
1:B:205[B]:VAL:HG23	1:B:261:ALA:HB2	1.95	0.48
1:A:272:ASP:OD2	3:A:402:C9M:C11	2.62	0.47
1:B:243:HIS:CG	1:B:244:PRO:HD2	2.50	0.47
1:B:99:TRP:CG	1:B:100:LEU:N	2.82	0.46
1:A:13:GLN:HG2	1:A:17:TRP:CE2	2.50	0.46
1:A:231:ASP:O	1:A:250:SER:HA	2.16	0.46
1:B:86:LYS:HA	1:B:87:PRO:HD3	1.86	0.46
1:A:267:LYS:NZ	2:A:401:SAH:OXT	2.46	0.45
1:A:15[B]:GLN:HG3	6:A:629:HOH:O	2.17	0.44
1:A:33:LEU:HD21	1:A:107:LEU:HD22	1.99	0.44
1:B:350:LYS:HD2	1:B:368:PRO:O	2.18	0.44
1:A:149:PRO:HG3	1:A:160:LYS:HD3	2.00	0.44
1:B:47:PRO:HA	1:B:98:TYR:O	2.18	0.43
1:B:242:THR:HA	6:B:585:HOH:O	2.17	0.43

Continued on next page...

Continued from previous page...

Atom-1	Atom-2	Interatomic distance (Å)	Clash overlap (Å)
1:A:272:ASP:OD2	3:A:402:C9M:H9	2.18	0.43
1:B:33:LEU:HD21	1:B:107:LEU:HD22	2.00	0.43
1:B:216:LYS:HE3	1:B:220:GLU:OE2	2.18	0.42
1:B:309:SER:O	4:B:403:GOL:H11	2.20	0.42
1:B:152:PHE:CE1	1:B:161:VAL:HA	2.55	0.41
1:A:276:GLU:HB3	1:A:277:PRO:CD	2.51	0.41
1:B:271:CYS:O	1:B:332:GLY:HA3	2.21	0.41
1:B:18:HIS:CE1	4:B:402:GOL:H2	2.56	0.41

There are no symmetry-related clashes.

5.3 Torsion angles [i](#)

5.3.1 Protein backbone [i](#)

In the following table, the Percentiles column shows the percent Ramachandran outliers of the chain as a percentile score with respect to all X-ray entries followed by that with respect to entries of similar resolution.

The Analysed column shows the number of residues for which the backbone conformation was analysed, and the total number of residues.

Mol	Chain	Analysed	Favoured	Allowed	Outliers	Percentiles	
1	A	367/388 (95%)	364 (99%)	3 (1%)	0	100	100
1	B	348/388 (90%)	347 (100%)	1 (0%)	0	100	100
All	All	715/776 (92%)	711 (99%)	4 (1%)	0	100	100

There are no Ramachandran outliers to report.

5.3.2 Protein sidechains [i](#)

In the following table, the Percentiles column shows the percent sidechain outliers of the chain as a percentile score with respect to all X-ray entries followed by that with respect to entries of similar resolution.

The Analysed column shows the number of residues for which the sidechain conformation was analysed, and the total number of residues.

Mol	Chain	Analysed	Rotameric	Outliers	Percentiles	
1	A	306/335 (91%)	302 (99%)	4 (1%)	73	77

Continued on next page...

Continued from previous page...

Mol	Chain	Analysed	Rotameric	Outliers	Percentiles	
1	B	296/335 (88%)	293 (99%)	3 (1%)	80	83
All	All	602/670 (90%)	595 (99%)	7 (1%)	75	79

All (7) residues with a non-rotameric sidechain are listed below:

Mol	Chain	Res	Type
1	A	36	ASP
1	A	43	ARG
1	A	268	TRP
1	A	329	PHE
1	B	175	PHE
1	B	199	GLU
1	B	268	TRP

Some sidechains can be flipped to improve hydrogen bonding and reduce clashes. All (1) such sidechains are listed below:

Mol	Chain	Res	Type
1	B	25	ASN

5.3.3 RNA [i](#)

There are no RNA molecules in this entry.

5.4 Non-standard residues in protein, DNA, RNA chains [i](#)

There are no non-standard protein/DNA/RNA residues in this entry.

5.5 Carbohydrates [i](#)

There are no carbohydrates in this entry.

5.6 Ligand geometry [i](#)

7 ligands are modelled in this entry.

In the following table, the Counts columns list the number of bonds (or angles) for which Mogul statistics could be retrieved, the number of bonds (or angles) that are observed in the model and the number of bonds (or angles) that are defined in the chemical component dictionary. The Link

column lists molecule types, if any, to which the group is linked. The Z score for a bond length (or angle) is the number of standard deviations the observed value is removed from the expected value. A bond length (or angle) with $|Z| > 2$ is considered an outlier worth inspection. RMSZ is the root-mean-square of all Z scores of the bond lengths (or angles).

Mol	Type	Chain	Res	Link	Bond lengths			Bond angles		
					Counts	RMSZ	# Z > 2	Counts	RMSZ	# Z > 2
2	SAH	A	401	-	20,28,28	1.21	2 (10%)	20,40,40	2.58	2 (10%)
3	C9M	A	402	-	14,14,14	0.63	0	17,17,17	1.37	2 (11%)
4	GOL	A	403	-	5,5,5	0.29	0	5,5,5	0.45	0
5	N7I	B	401	-	13,13,13	1.43	2 (15%)	16,16,16	0.68	0
4	GOL	B	402	-	5,5,5	0.34	0	5,5,5	0.28	0
4	GOL	B	403	-	5,5,5	0.33	0	5,5,5	0.37	0
4	GOL	B	404	-	5,5,5	0.34	0	5,5,5	0.27	0

In the following table, the Chirals column lists the number of chiral outliers, the number of chiral centers analysed, the number of these observed in the model and the number defined in the chemical component dictionary. Similar counts are reported in the Torsion and Rings columns. '-' means no outliers of that kind were identified.

Mol	Type	Chain	Res	Link	Chirals	Torsions	Rings
2	SAH	A	401	-	-	0/7/31/31	0/3/3/3
3	C9M	A	402	-	-	0/7/7/7	0/1/1/1
4	GOL	A	403	-	-	0/4/4/4	0/0/0/0
5	N7I	B	401	-	-	0/6/6/6	0/1/1/1
4	GOL	B	402	-	-	0/4/4/4	0/0/0/0
4	GOL	B	403	-	-	0/4/4/4	0/0/0/0
4	GOL	B	404	-	-	0/4/4/4	0/0/0/0

All (4) bond length outliers are listed below:

Mol	Chain	Res	Type	Atoms	Z	Observed(Å)	Ideal(Å)
5	B	401	N7I	C3-C4	2.26	1.43	1.39
2	A	401	SAH	C2-N1	2.46	1.38	1.33
5	B	401	N7I	C4-C5	3.19	1.45	1.40
2	A	401	SAH	C2-N3	3.92	1.38	1.32

All (4) bond angle outliers are listed below:

Mol	Chain	Res	Type	Atoms	Z	Observed(°)	Ideal(°)
2	A	401	SAH	N3-C2-N1	-10.72	119.52	128.86
2	A	401	SAH	C5'-SD-CG	-2.55	94.56	102.29
3	A	402	C9M	C9-C8-C7	-2.35	119.47	124.90
3	A	402	C9M	O13-C1-C2	2.23	117.27	114.55

There are no chirality outliers.

There are no torsion outliers.

There are no ring outliers.

5 monomers are involved in 23 short contacts:

Mol	Chain	Res	Type	Clashes	Symm-Clashes
2	A	401	SAH	3	0
3	A	402	C9M	7	0
4	B	402	GOL	4	0
4	B	403	GOL	1	0
4	B	404	GOL	10	0

5.7 Other polymers [i](#)

There are no such residues in this entry.

5.8 Polymer linkage issues [i](#)

There are no chain breaks in this entry.

6 Fit of model and data [i](#)

6.1 Protein, DNA and RNA chains [i](#)

In the following table, the column labelled ‘#RSRZ > 2’ contains the number (and percentage) of RSRZ outliers, followed by percent RSRZ outliers for the chain as percentile scores relative to all X-ray entries and entries of similar resolution. The OWAB column contains the minimum, median, 95th percentile and maximum values of the occupancy-weighted average B-factor per residue. The column labelled ‘Q < 0.9’ lists the number of (and percentage) of residues with an average occupancy less than 0.9.

Mol	Chain	Analysed	<RSRZ>	#RSRZ>2	OWAB(Å ²)	Q<0.9
1	A	360/388 (92%)	-0.57	7 (1%) 67 67	11, 20, 43, 67	0
1	B	354/388 (91%)	-0.36	7 (1%) 65 65	13, 25, 47, 59	0
All	All	714/776 (92%)	-0.47	14 (1%) 65 65	11, 23, 46, 67	0

All (14) RSRZ outliers are listed below:

Mol	Chain	Res	Type	RSRZ
1	A	293	GLY	3.9
1	B	162	TYR	3.5
1	B	238	GLY	3.5
1	A	166	SER	3.3
1	A	169	ALA	3.2
1	A	292	ASN	3.1
1	B	294	VAL	2.9
1	B	145	GLY	2.9
1	B	289	LEU	2.5
1	A	294	VAL	2.4
1	A	144	ASP	2.2
1	B	87	PRO	2.1
1	B	-5	VAL	2.1
1	A	96	PRO	2.0

6.2 Non-standard residues in protein, DNA, RNA chains [i](#)

There are no non-standard protein/DNA/RNA residues in this entry.

6.3 Carbohydrates [i](#)

There are no carbohydrates in this entry.

6.4 Ligands [i](#)

In the following table, the Atoms column lists the number of modelled atoms in the group and the number defined in the chemical component dictionary. LLDF column lists the quality of electron density of the group with respect to its neighbouring residues in protein, DNA or RNA chains. The B-factors column lists the minimum, median, 95th percentile and maximum values of B factors of atoms in the group. The column labelled 'Q< 0.9' lists the number of atoms with occupancy less than 0.9.

Mol	Type	Chain	Res	Atoms	RSCC	RSR	LLDF	B-factors(Å ²)	Q<0.9
4	GOL	B	404	6/6	0.86	0.26	7.98	31,37,40,44	0
4	GOL	A	403	6/6	0.75	0.22	5.83	49,50,50,51	0
4	GOL	B	402	6/6	0.89	0.14	2.34	44,46,47,47	0
4	GOL	B	403	6/6	0.88	0.14	1.89	40,43,44,45	0
3	C9M	A	402	14/14	0.94	0.08	-0.09	17,20,29,30	0
2	SAH	A	401	26/26	0.96	0.08	-0.29	9,23,26,29	0
5	N7I	B	401	13/13	0.96	0.07	-0.31	20,22,29,29	0

6.5 Other polymers [i](#)

There are no such residues in this entry.