



Full wwPDB X-ray Structure Validation Report ⓘ

Feb 18, 2018 – 12:55 AM EST

PDB ID : 6EV3
Title : Structure of wild type *A. niger* Fdc1 that has been illuminated with UV light, with prFMN in the iminium and ketimine form
Authors : Bailey, S.S.; David, L.; Payne, K.A.P.
Deposited on : 2017-11-01
Resolution : 1.30 Å(reported)

This is a Full wwPDB X-ray Structure Validation Report for a publicly released PDB entry.

We welcome your comments at validation@mail.wwpdb.org

A user guide is available at

<http://wwpdb.org/validation/2016/XrayValidationReportHelp>

with specific help available everywhere you see the ⓘ symbol.

The following versions of software and data (see [references ⓘ](#)) were used in the production of this report:

MolProbity : 4.02b-467
Mogul : 1.7.2 (RC1), CSD as538be (2017)
Xtriage (Phenix) : 1.9-1692
EDS : rb-20030736
Percentile statistics : 20161228.v01 (using entries in the PDB archive December 28th 2016)
Refmac : 5.8.0135
CCP4 : 6.5.0
Ideal geometry (proteins) : Engh & Huber (2001)
Ideal geometry (DNA, RNA) : Parkinson et al. (1996)
Validation Pipeline (wwPDB-VP) : rb-20030736

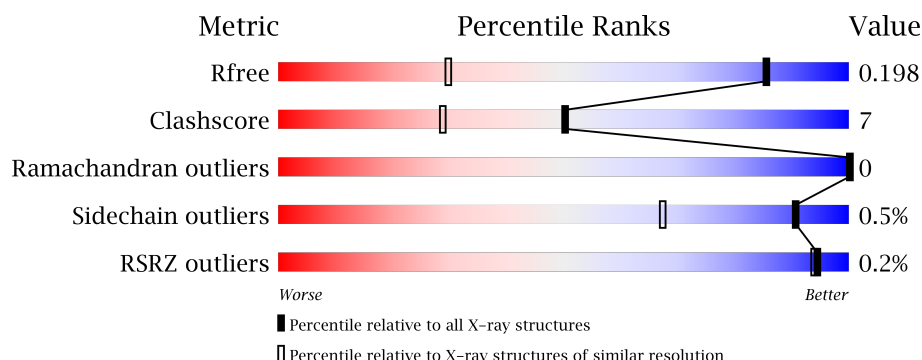
1 Overall quality at a glance

The following experimental techniques were used to determine the structure:

X-RAY DIFFRACTION

The reported resolution of this entry is 1.30 Å.

Percentile scores (ranging between 0-100) for global validation metrics of the entry are shown in the following graphic. The table shows the number of entries on which the scores are based.



Metric	Whole archive (#Entries)	Similar resolution (#Entries, resolution range(Å))
R_{free}	100719	1131 (1.32-1.28)
Clashscore	112137	1185 (1.32-1.28)
Ramachandran outliers	110173	1138 (1.32-1.28)
Sidechain outliers	110143	1138 (1.32-1.28)
RSRZ outliers	101464	1133 (1.32-1.28)

The table below summarises the geometric issues observed across the polymeric chains and their fit to the electron density. The red, orange, yellow and green segments on the lower bar indicate the fraction of residues that contain outliers for ≥ 3 , 2, 1 and 0 types of geometric quality criteria. A grey segment represents the fraction of residues that are not modelled. The numeric value for each fraction is indicated below the corresponding segment, with a dot representing fractions $\leq 5\%$. The upper red bar (where present) indicates the fraction of residues that have poor fit to the electron density. The numeric value is given above the bar.

Mol	Chain	Length	Quality of chain
1	A	508	 87% 10% ..

The following table lists non-polymeric compounds, carbohydrate monomers and non-standard residues in protein, DNA, RNA chains that are outliers for geometric or electron-density-fit criteria:

Mol	Type	Chain	Res	Chirality	Geometry	Clashes	Electron density
2	4LU	A	601	-	-	-	X
5	FZZ	A	605	-	-	-	X

2 Entry composition

There are 6 unique types of molecules in this entry. The entry contains 4932 atoms, of which 0 are hydrogens and 0 are deuteriums.

In the tables below, the ZeroOcc column contains the number of atoms modelled with zero occupancy, the AltConf column contains the number of residues with at least one atom in alternate conformation and the Trace column contains the number of residues modelled with at most 2 atoms.

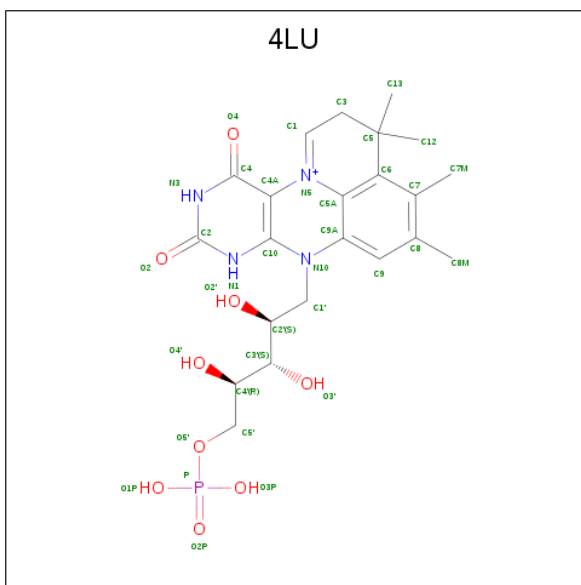
- Molecule 1 is a protein called Ferulic acid decarboxylase 1.

Mol	Chain	Residues	Atoms					ZeroOcc	AltConf	Trace
			Total	C	N	O	S			
1	A	500	4122	2609	709	774	30	0	35	1

There are 8 discrepancies between the modelled and reference sequences:

Chain	Residue	Modelled	Actual	Comment	Reference
A	499B	LEU	-	expression tag	UNP A2QHE5
A	499C	GLU	-	expression tag	UNP A2QHE5
A	502	HIS	-	expression tag	UNP A2QHE5
A	503	HIS	-	expression tag	UNP A2QHE5
A	504	HIS	-	expression tag	UNP A2QHE5
A	505	HIS	-	expression tag	UNP A2QHE5
A	506	HIS	-	expression tag	UNP A2QHE5
A	507	HIS	-	expression tag	UNP A2QHE5

- Molecule 2 is 1-deoxy-5-O-phosphono-1-(3,3,4,5-tetramethyl-9,11-dioxo-2,3,8,9,10,11-hexahydro-7H-quinolino[1,8-fg]pteridin-12-ium-7-yl)-D-ribitol (three-letter code: 4LU) (formula: $C_{22}H_{30}N_4O_9P$).



Mol	Chain	Residues	Atoms					ZeroOcc	AltConf
2	A	1	Total	C	N	O	P	0	0
			36	22	4	9	1		

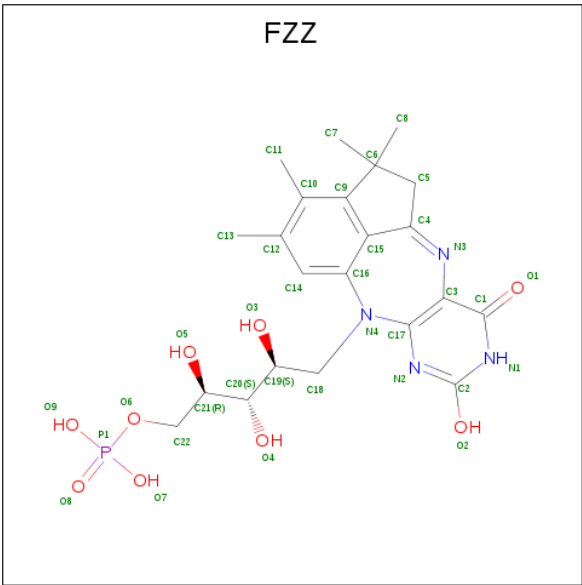
- Molecule 3 is MANGANESE (II) ION (three-letter code: MN) (formula: Mn).

Mol	Chain	Residues	Atoms	ZeroOcc	AltConf
3	A	1	Total Mn 1 1	0	0

- Molecule 4 is POTASSIUM ION (three-letter code: K) (formula: K).

Mol	Chain	Residues	Atoms	ZeroOcc	AltConf
4	A	2	Total K 2 2	0	0

- Molecule 5 is 1-deoxy-5-O-phosphono-1-[(10aR)-2,2,3,4-tetramethyl-8,10-dioxo-1,2,8,9,10,10a-hexahydro-6H-indeno[1,7-e]pyrimido[4,5-b][1,4]diazepin-6-yl]-D-ribitol (three-letter code: FZZ) (formula: C₂₂H₂₉N₄O₉P).



Mol	Chain	Residues	Atoms					ZeroOcc	AltConf
5	A	1	Total	C	N	O	P	0	0
			36	22	4	9	1		

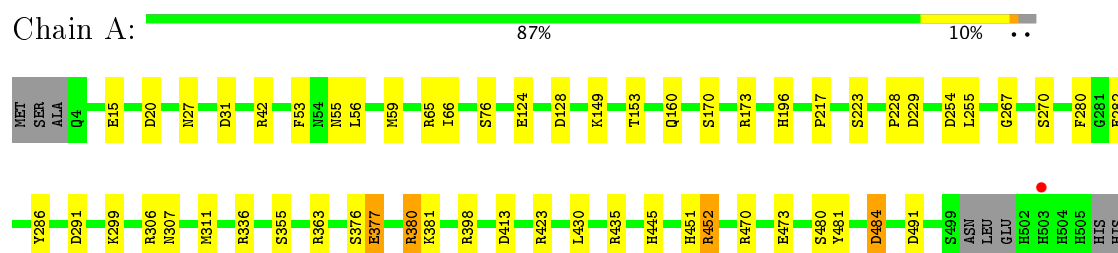
- Molecule 6 is water.

Mol	Chain	Residues	Atoms		ZeroOcc	AltConf
6	A	735	Total	O	0	0
			735	735		

3 Residue-property plots [i](#)

These plots are drawn for all protein, RNA and DNA chains in the entry. The first graphic for a chain summarises the proportions of the various outlier classes displayed in the second graphic. The second graphic shows the sequence view annotated by issues in geometry and electron density. Residues are color-coded according to the number of geometric quality criteria for which they contain at least one outlier: green = 0, yellow = 1, orange = 2 and red = 3 or more. A red dot above a residue indicates a poor fit to the electron density ($RSRZ > 2$). Stretches of 2 or more consecutive residues without any outlier are shown as a green connector. Residues present in the sample, but not in the model, are shown in grey.

- Molecule 1: Ferulic acid decarboxylase 1



4 Data and refinement statistics

Property	Value	Source
Space group	P 21 21 2	Depositor
Cell constants a, b, c, α , β , γ	96.13Å 63.91Å 87.85Å 90.00° 90.00° 90.00°	Depositor
Resolution (Å)	64.85 – 1.30 64.85 – 1.30	Depositor EDS
% Data completeness (in resolution range)	95.8 (64.85-1.30) 95.8 (64.85-1.30)	Depositor EDS
R_{merge}	(Not available)	Depositor
R_{sym}	(Not available)	Depositor
$\langle I/\sigma(I) \rangle$ ¹	1.60 (at 1.30Å)	Xtriage
Refinement program	REFMAC 5.8.0158	Depositor
R, R_{free}	0.173 , 0.197 0.173 , 0.198	Depositor DCC
R_{free} test set	6290 reflections (5.18%)	DCC
Wilson B-factor (Å ²)	11.2	Xtriage
Anisotropy	0.339	Xtriage
Bulk solvent k_{sol} (e/Å ³), B_{sol} (Å ²)	0.34 , 41.7	EDS
L-test for twinning ²	$\langle L \rangle = 0.50$, $\langle L^2 \rangle = 0.33$	Xtriage
Estimated twinning fraction	No twinning to report.	Xtriage
F_o, F_c correlation	0.97	EDS
Total number of atoms	4932	wwPDB-VP
Average B, all atoms (Å ²)	16.0	wwPDB-VP

Xtriage's analysis on translational NCS is as follows: *The largest off-origin peak in the Patterson function is 5.25% of the height of the origin peak. No significant pseudotranslation is detected.*

¹Intensities estimated from amplitudes.

²Theoretical values of $\langle |L| \rangle$, $\langle L^2 \rangle$ for acentric reflections are 0.5, 0.333 respectively for untwinned datasets, and 0.375, 0.2 for perfectly twinned datasets.

5 Model quality

5.1 Standard geometry

Bond lengths and bond angles in the following residue types are not validated in this section: FZZ, K, MN, 4LU

The Z score for a bond length (or angle) is the number of standard deviations the observed value is removed from the expected value. A bond length (or angle) with $|Z| > 5$ is considered an outlier worth inspection. RMSZ is the root-mean-square of all Z scores of the bond lengths (or angles).

Mol	Chain	Bond lengths		Bond angles	
		RMSZ	$\# Z > 5$	RMSZ	$\# Z > 5$
1	A	1.13	11/4224 (0.3%)	1.18	32/5739 (0.6%)

All (11) bond length outliers are listed below:

Mol	Chain	Res	Type	Atoms	Z	Observed(Å)	Ideal(Å)
1	A	377[A]	GLU	CD-OE1	7.49	1.33	1.25
1	A	377[B]	GLU	CD-OE1	7.49	1.33	1.25
1	A	473	GLU	CD-OE1	5.91	1.32	1.25
1	A	377[A]	GLU	CD-OE2	5.88	1.32	1.25
1	A	377[B]	GLU	CD-OE2	5.88	1.32	1.25
1	A	15[A]	GLU	CG-CD	5.32	1.59	1.51
1	A	15[B]	GLU	CG-CD	5.32	1.59	1.51
1	A	452	ARG	CZ-NH1	5.30	1.40	1.33
1	A	336	ARG	CZ-NH1	-5.08	1.26	1.33
1	A	254	ASP	CB-CG	5.06	1.62	1.51
1	A	355	SER	CB-OG	5.02	1.48	1.42

All (32) bond angle outliers are listed below:

Mol	Chain	Res	Type	Atoms	Z	Observed(°)	Ideal(°)
1	A	452	ARG	NE-CZ-NH2	-11.43	114.58	120.30
1	A	435	ARG	NE-CZ-NH2	-8.33	116.14	120.30
1	A	380	ARG	CG-CD-NE	8.26	129.14	111.80
1	A	398	ARG	NE-CZ-NH2	7.68	124.14	120.30
1	A	42[A]	ARG	NE-CZ-NH2	-7.48	116.56	120.30
1	A	42[B]	ARG	NE-CZ-NH2	-7.48	116.56	120.30
1	A	452	ARG	NE-CZ-NH1	7.46	124.03	120.30
1	A	306	ARG	NE-CZ-NH1	7.42	124.01	120.30
1	A	398	ARG	NE-CZ-NH1	-7.21	116.70	120.30
1	A	229	ASP	CB-CG-OD1	7.17	124.75	118.30

Continued on next page...

Continued from previous page...

Mol	Chain	Res	Type	Atoms	Z	Observed(°)	Ideal(°)
1	A	336	ARG	NE-CZ-NH1	-7.13	116.74	120.30
1	A	173	ARG	NE-CZ-NH2	-7.02	116.79	120.30
1	A	380	ARG	NE-CZ-NH2	-6.92	116.84	120.30
1	A	65	ARG	NE-CZ-NH2	6.82	123.71	120.30
1	A	484[A]	ASP	CB-CG-OD1	6.58	124.22	118.30
1	A	484[B]	ASP	CB-CG-OD1	6.58	124.22	118.30
1	A	306	ARG	NE-CZ-NH2	-6.43	117.08	120.30
1	A	377[A]	GLU	CG-CD-OE2	-6.40	105.50	118.30
1	A	377[B]	GLU	CG-CD-OE2	-6.40	105.50	118.30
1	A	423	ARG	NE-CZ-NH2	-6.26	117.17	120.30
1	A	254	ASP	CB-CG-OD2	-6.03	112.87	118.30
1	A	291	ASP	CB-CG-OD2	-5.60	113.26	118.30
1	A	380	ARG	NE-CZ-NH1	5.57	123.09	120.30
1	A	128	ASP	CB-CG-OD2	-5.53	113.32	118.30
1	A	491	ASP	CB-CG-OD2	-5.44	113.41	118.30
1	A	413	ASP	CB-CG-OD1	5.40	123.16	118.30
1	A	20	ASP	CB-CG-OD1	5.37	123.13	118.30
1	A	173	ARG	NE-CZ-NH1	5.21	122.91	120.30
1	A	286	TYR	CB-CG-CD1	5.11	124.07	121.00
1	A	65	ARG	NE-CZ-NH1	-5.07	117.76	120.30
1	A	31	ASP	CB-CG-OD2	-5.07	113.74	118.30
1	A	254	ASP	CB-CG-OD1	5.02	122.82	118.30

There are no chirality outliers.

There are no planarity outliers.

5.2 Too-close contacts ⓘ

In the following table, the Non-H and H(model) columns list the number of non-hydrogen atoms and hydrogen atoms in the chain respectively. The H(added) column lists the number of hydrogen atoms added and optimized by MolProbity. The Clashes column lists the number of clashes within the asymmetric unit, whereas Symm-Clashes lists symmetry related clashes.

Mol	Chain	Non-H	H(model)	H(added)	Clashes	Symm-Clashes
1	A	4122	0	4001	41	0
2	A	36	0	16	14	0
3	A	1	0	0	0	0
4	A	2	0	0	0	0
5	A	36	0	12	14	0
6	A	735	0	0	31	3
All	All	4932	0	4029	55	3

The all-atom clashscore is defined as the number of clashes found per 1000 atoms (including hydrogen atoms). The all-atom clashscore for this structure is 7.

All (55) close contacts within the same asymmetric unit are listed below, sorted by their clash magnitude.

Atom-1	Atom-2	Interatomic distance (Å)	Clash overlap (Å)
2:A:601:4LU:H14	2:A:601:4LU:H13	1.40	1.03
2:A:601:4LU:H13	5:A:605:FZZ:C11	1.95	0.95
1:A:381:LYS:CD	6:A:703:HOH:O	2.16	0.93
2:A:601:4LU:C12	2:A:601:4LU:H14	2.05	0.86
1:A:381:LYS:HG3	6:A:722:HOH:O	1.81	0.79
1:A:381:LYS:HD3	6:A:703:HOH:O	1.79	0.79
2:A:601:4LU:H13	5:A:605:FZZ:H12	1.64	0.77
1:A:480[B]:SER:HB2	1:A:481:TYR:CE2	2.24	0.72
1:A:59[A]:MET:SD	6:A:1009:HOH:O	2.47	0.72
1:A:124:GLU:OE1	6:A:701:HOH:O	2.09	0.71
2:A:601:4LU:C12	5:A:605:FZZ:H13	2.18	0.70
2:A:601:4LU:H7	5:A:605:FZZ:C19	2.05	0.70
1:A:59[A]:MET:CE	6:A:1009:HOH:O	2.44	0.66
2:A:601:4LU:O3'	5:A:605:FZZ:N2	2.27	0.64
2:A:601:4LU:N1	5:A:605:FZZ:C19	2.61	0.63
1:A:255:LEU:HD21	6:A:710:HOH:O	1.98	0.61
2:A:601:4LU:C4	6:A:705:HOH:O	2.49	0.59
1:A:381:LYS:HD2	6:A:703:HOH:O	1.94	0.58
1:A:196[B]:HIS:HE1	1:A:270:SER:O	1.87	0.57
2:A:601:4LU:H25	5:A:605:FZZ:C2	2.17	0.57
2:A:601:4LU:N1	5:A:605:FZZ:O3	2.40	0.55
1:A:377[B]:GLU:HG3	6:A:722:HOH:O	2.07	0.54
2:A:601:4LU:C10	5:A:605:FZZ:O3	2.57	0.53
1:A:160:GLN:N	6:A:710:HOH:O	2.42	0.52
1:A:149[A]:LYS:HD3	6:A:1037:HOH:O	2.10	0.51
1:A:381:LYS:HE3	6:A:722:HOH:O	2.11	0.51
1:A:76[B]:SER:HB3	6:A:971:HOH:O	2.11	0.50
1:A:470:ARG:NE	6:A:712:HOH:O	2.45	0.48
1:A:153:THR:O	5:A:605:FZZ:H12	2.14	0.48
1:A:381:LYS:CG	6:A:722:HOH:O	2.52	0.48
1:A:223:SER:O	5:A:605:FZZ:O4	2.30	0.48
1:A:363:ARG:NH1	6:A:713:HOH:O	2.45	0.48
1:A:445:HIS:HE1	6:A:747:HOH:O	1.97	0.47
2:A:601:4LU:C10	5:A:605:FZZ:C19	2.91	0.46
1:A:255:LEU:HG	6:A:1195:HOH:O	2.15	0.46
1:A:381:LYS:CD	6:A:722:HOH:O	2.64	0.46
1:A:170:SER:HB2	5:A:605:FZZ:C22	2.46	0.46

Continued on next page...

Continued from previous page...

Atom-1	Atom-2	Interatomic distance (Å)	Clash overlap (Å)
1:A:307:ASN:N	6:A:701:HOH:O	2.49	0.45
1:A:430:LEU:HD12	6:A:1379:HOH:O	2.17	0.45
1:A:196[B]:HIS:CE1	1:A:270:SER:O	2.68	0.44
1:A:484[A]:ASP:CG	6:A:887:HOH:O	2.56	0.44
1:A:55:ASN:C	6:A:744:HOH:O	2.56	0.43
1:A:267:GLY:HA3	1:A:299:LYS:O	2.18	0.43
1:A:376:SER:O	1:A:380:ARG:HG3	2.19	0.43
2:A:601:4LU:C12	5:A:605:FZZ:C11	2.63	0.43
1:A:377[B]:GLU:CG	6:A:722:HOH:O	2.67	0.43
1:A:451:HIS:HB3	6:A:717:HOH:O	2.19	0.42
1:A:228:PRO:HA	6:A:1230:HOH:O	2.19	0.42
1:A:53:PHE:HB3	6:A:744:HOH:O	2.18	0.42
1:A:27:ASN:N	6:A:723:HOH:O	2.49	0.41
1:A:56[B]:LEU:HD11	1:A:66:ILE:HD12	2.02	0.41
1:A:280:PHE:O	1:A:282[A]:GLU:HG3	2.20	0.41
1:A:66:ILE:HA	1:A:311:MET:O	2.21	0.41
1:A:149[A]:LYS:CE	6:A:1063:HOH:O	2.68	0.41
1:A:381:LYS:HE2	6:A:1264:HOH:O	2.21	0.41

All (3) symmetry-related close contacts are listed below. The label for Atom-2 includes the symmetry operator and encoded unit-cell translations to be applied.

Atom-1	Atom-2	Interatomic distance (Å)	Clash overlap (Å)
6:A:1334:HOH:O	6:A:1337:HOH:O[3_555]	0.79	1.41
6:A:1016:HOH:O	6:A:1016:HOH:O[2_655]	0.90	1.30
6:A:771:HOH:O	6:A:1169:HOH:O[2_555]	2.00	0.20

5.3 Torsion angles ⓘ

5.3.1 Protein backbone ⓘ

In the following table, the Percentiles column shows the percent Ramachandran outliers of the chain as a percentile score with respect to all X-ray entries followed by that with respect to entries of similar resolution.

The Analysed column shows the number of residues for which the backbone conformation was analysed, and the total number of residues.

Mol	Chain	Analysed	Favoured	Allowed	Outliers	Percentiles
1	A	531/508 (104%)	515 (97%)	16 (3%)	0	100 100

There are no Ramachandran outliers to report.

5.3.2 Protein sidechains ⓘ

In the following table, the Percentiles column shows the percent sidechain outliers of the chain as a percentile score with respect to all X-ray entries followed by that with respect to entries of similar resolution.

The Analysed column shows the number of residues for which the sidechain conformation was analysed, and the total number of residues.

Mol	Chain	Analysed	Rotameric	Outliers	Percentiles
1	A	445/430 (104%)	443 (100%)	2 (0%)	93 75

All (2) residues with a non-rotameric sidechain are listed below:

Mol	Chain	Res	Type
1	A	217	PRO
1	A	452	ARG

Some sidechains can be flipped to improve hydrogen bonding and reduce clashes. There are no such sidechains identified.

5.3.3 RNA ⓘ

There are no RNA molecules in this entry.

5.4 Non-standard residues in protein, DNA, RNA chains ⓘ

There are no non-standard protein/DNA/RNA residues in this entry.

5.5 Carbohydrates ⓘ

There are no carbohydrates in this entry.

5.6 Ligand geometry ⓘ

Of 5 ligands modelled in this entry, 3 are monoatomic - leaving 2 for Mogul analysis.

In the following table, the Counts columns list the number of bonds (or angles) for which Mogul statistics could be retrieved, the number of bonds (or angles) that are observed in the model and the number of bonds (or angles) that are defined in the Chemical Component Dictionary. The

Link column lists molecule types, if any, to which the group is linked. The Z score for a bond length (or angle) is the number of standard deviations the observed value is removed from the expected value. A bond length (or angle) with $|Z| > 2$ is considered an outlier worth inspection. RMSZ is the root-mean-square of all Z scores of the bond lengths (or angles).

Mol	Type	Chain	Res	Link	Bond lengths			Bond angles		
					Counts	RMSZ	# Z > 2	Counts	RMSZ	# Z > 2
2	4LU	A	601	3,5,4	33,39,39	1.72	7 (21%)	36,62,62	2.60	11 (30%)
5	FZZ	A	605	3,2,4	32,39,39	2.59	8 (25%)	36,62,62	2.73	17 (47%)

In the following table, the Chirals column lists the number of chiral outliers, the number of chiral centers analysed, the number of these observed in the model and the number defined in the Chemical Component Dictionary. Similar counts are reported in the Torsion and Rings columns. '-' means no outliers of that kind were identified.

Mol	Type	Chain	Res	Link	Chirals	Torsions	Rings
2	4LU	A	601	3,5,4	-	0/16/30/30	0/3/4/4
5	FZZ	A	605	3,2,4	-	0/16/29/29	0/3/4/4

All (15) bond length outliers are listed below:

Mol	Chain	Res	Type	Atoms	Z	Observed(Å)	Ideal(Å)
5	A	605	FZZ	C5-C4	-8.41	1.44	1.50
5	A	605	FZZ	C15-C16	-4.70	1.38	1.43
2	A	601	4LU	C5-C6	-3.93	1.51	1.54
2	A	601	4LU	C2-N3	-3.90	1.30	1.38
5	A	605	FZZ	O6-C22	-3.52	1.30	1.44
5	A	605	FZZ	C19-C20	-2.42	1.48	1.53
2	A	601	4LU	C2'-C3'	-2.30	1.48	1.53
2	A	601	4LU	C2-N1	-2.30	1.33	1.38
2	A	601	4LU	O4-C4	-2.16	1.19	1.24
5	A	605	FZZ	C1-N1	2.43	1.37	1.33
5	A	605	FZZ	C17-N2	3.58	1.41	1.35
5	A	605	FZZ	C1-C3	3.69	1.48	1.41
2	A	601	4LU	C9A-N10	3.78	1.43	1.38
2	A	601	4LU	C6-C7	3.80	1.49	1.40
5	A	605	FZZ	C3-C17	6.54	1.52	1.41

All (28) bond angle outliers are listed below:

Mol	Chain	Res	Type	Atoms	Z	Observed(°)	Ideal(°)
5	A	605	FZZ	C1-C3-C17	-9.13	112.58	119.96
2	A	601	4LU	C4-C4A-C10	-6.93	114.36	119.96
2	A	601	4LU	C5-C3-C1	-5.22	103.09	111.94

Continued on next page...

Continued from previous page...

Mol	Chain	Res	Type	Atoms	Z	Observed(°)	Ideal(°)
5	A	605	FZZ	P1-O6-C22	-4.78	105.14	118.30
5	A	605	FZZ	C3-C1-N1	-3.88	117.95	123.48
5	A	605	FZZ	N2-C2-N1	-3.66	122.03	127.72
5	A	605	FZZ	O7-P1-O6	-3.37	97.76	106.73
2	A	601	4LU	C8M-C8-C7	-3.33	115.63	121.18
5	A	605	FZZ	O9-P1-O6	-3.01	98.72	106.73
2	A	601	4LU	C4A-C4-N3	-2.66	119.69	123.48
5	A	605	FZZ	O3-C19-C20	-2.63	102.55	109.09
2	A	601	4LU	C7-C6-C5A	-2.37	116.76	119.10
5	A	605	FZZ	O4-C20-C21	-2.23	103.30	108.82
2	A	601	4LU	O5'-P-O2P	-2.08	100.64	106.47
5	A	605	FZZ	C12-C10-C9	-2.08	117.45	119.37
2	A	601	4LU	O3'-C3'-C2'	-2.07	103.69	108.82
5	A	605	FZZ	O6-P1-O8	2.04	112.21	106.47
5	A	605	FZZ	O6-C22-C21	2.27	115.42	109.36
5	A	605	FZZ	C5-C4-C15	2.30	110.06	107.44
2	A	601	4LU	O3P-P-O5'	2.49	113.36	106.73
5	A	605	FZZ	O9-P1-O7	2.58	118.04	107.61
5	A	605	FZZ	O5-C21-C20	2.59	115.52	109.09
2	A	601	4LU	C1'-N10-C9A	2.62	120.75	118.35
5	A	605	FZZ	C21-C20-C19	3.41	120.75	113.41
2	A	601	4LU	C4A-C10-N10	3.71	123.10	120.52
5	A	605	FZZ	C1-N1-C2	3.84	124.61	115.64
5	A	605	FZZ	C5-C6-C9	5.38	106.89	102.12
2	A	601	4LU	C4-N3-C2	9.27	123.27	115.16

There are no chirality outliers.

There are no torsion outliers.

There are no ring outliers.

2 monomers are involved in 17 short contacts:

Mol	Chain	Res	Type	Clashes	Symm-Clashes
2	A	601	4LU	14	0
5	A	605	FZZ	14	0

5.7 Other polymers [i](#)

There are no such residues in this entry.

5.8 Polymer linkage issues ⓘ

There are no chain breaks in this entry.

6 Fit of model and data [i](#)

6.1 Protein, DNA and RNA chains [i](#)

In the following table, the column labelled ‘#RSRZ> 2’ contains the number (and percentage) of RSRZ outliers, followed by percent RSRZ outliers for the chain as percentile scores relative to all X-ray entries and entries of similar resolution. The OWAB column contains the minimum, median, 95th percentile and maximum values of the occupancy-weighted average B-factor per residue. The column labelled ‘Q< 0.9’ lists the number of (and percentage) of residues with an average occupancy less than 0.9.

Mol	Chain	Analysed	<RSRZ>	#RSRZ>2	OWAB(Å ²)	Q<0.9
1	A	500/508 (98%)	-0.63	1 (0%) 94 94	9, 12, 22, 59	0

All (1) RSRZ outliers are listed below:

Mol	Chain	Res	Type	RSRZ
1	A	503	HIS	3.4

6.2 Non-standard residues in protein, DNA, RNA chains [i](#)

There are no non-standard protein/DNA/RNA residues in this entry.

6.3 Carbohydrates [i](#)

There are no carbohydrates in this entry.

6.4 Ligands [i](#)

In the following table, the Atoms column lists the number of modelled atoms in the group and the number defined in the chemical component dictionary. LLDF column lists the quality of electron density of the group with respect to its neighbouring residues in protein, DNA or RNA chains. The B-factors column lists the minimum, median, 95th percentile and maximum values of B factors of atoms in the group. The column labelled ‘Q< 0.9’ lists the number of atoms with occupancy less than 0.9.

Mol	Type	Chain	Res	Atoms	RSCC	RSR	LLDF	B-factors(Å ²)	Q<0.9
5	FZZ	A	605	36/36	0.97	0.09	3.24	7,12,14,15	36
2	4LU	A	601	36/36	0.97	0.08	2.18	6,8,10,12	36
4	K	A	603	1/1	1.00	0.04	-1.17	10,10,10,10	0
4	K	A	604	1/1	1.00	0.03	-2.88	9,9,9,9	0
3	MN	A	602	1/1	1.00	0.03	-3.01	10,10,10,10	0

6.5 Other polymers [i](#)

There are no such residues in this entry.