



Full wwPDB X-ray Structure Validation Report ⓘ

Feb 17, 2018 – 10:42 PM EST

PDB ID : 6EVA
Title : Structure of E277Q A. niger fdcl in complex with a phenylpyruvate derived adduct to the prenylated flavin cofactor
Authors : Bailey, S.S.; David, L.; Payne, K.A.P.
Deposited on : 2017-11-01
Resolution : 1.64 Å(reported)

This is a Full wwPDB X-ray Structure Validation Report for a publicly released PDB entry.

We welcome your comments at validation@mail.wwpdb.org

A user guide is available at

<http://wwpdb.org/validation/2016/XrayValidationReportHelp>

with specific help available everywhere you see the ⓘ symbol.

The following versions of software and data (see [references ⓘ](#)) were used in the production of this report:

MolProbity : 4.02b-467
Mogul : 1.7.2 (RC1), CSD as538be (2017)
Xtriage (Phenix) : 1.9-1692
EDS : rb-20030736
Percentile statistics : 20161228.v01 (using entries in the PDB archive December 28th 2016)
Refmac : 5.8.0135
CCP4 : 6.5.0
Ideal geometry (proteins) : Engh & Huber (2001)
Ideal geometry (DNA, RNA) : Parkinson et al. (1996)
Validation Pipeline (wwPDB-VP) : rb-20030736

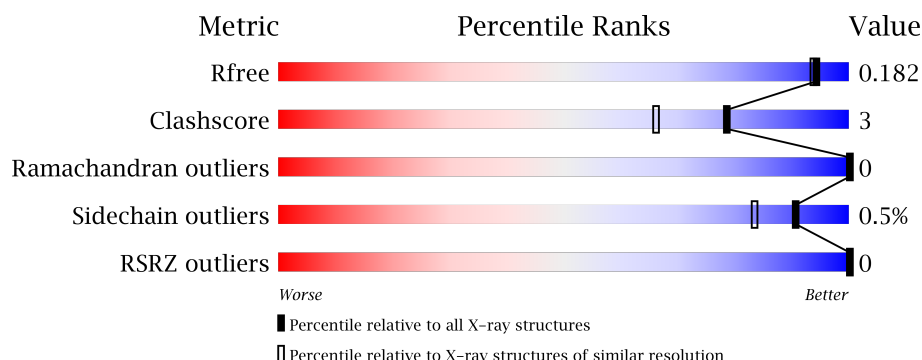
1 Overall quality at a glance

The following experimental techniques were used to determine the structure:

X-RAY DIFFRACTION


The reported resolution of this entry is 1.64 Å.

Percentile scores (ranging between 0-100) for global validation metrics of the entry are shown in the following graphic. The table shows the number of entries on which the scores are based.



Metric	Whole archive (#Entries)	Similar resolution (#Entries, resolution range(Å))
R_{free}	100719	2211 (1.66-1.62)
Clashscore	112137	2356 (1.66-1.62)
Ramachandran outliers	110173	2315 (1.66-1.62)
Sidechain outliers	110143	2315 (1.66-1.62)
RSRZ outliers	101464	2219 (1.66-1.62)

The table below summarises the geometric issues observed across the polymeric chains and their fit to the electron density. The red, orange, yellow and green segments on the lower bar indicate the fraction of residues that contain outliers for ≥ 3 , 2, 1 and 0 types of geometric quality criteria. A grey segment represents the fraction of residues that are not modelled. The numeric value for each fraction is indicated below the corresponding segment, with a dot representing fractions $\leq 5\%$. The upper red bar (where present) indicates the fraction of residues that have poor fit to the electron density. The numeric value is given above the bar.

Mol	Chain	Length	Quality of chain
1	A	508	

2 Entry composition

There are 5 unique types of molecules in this entry. The entry contains 4703 atoms, of which 0 are hydrogens and 0 are deuteriums.

In the tables below, the ZeroOcc column contains the number of atoms modelled with zero occupancy, the AltConf column contains the number of residues with at least one atom in alternate conformation and the Trace column contains the number of residues modelled with at most 2 atoms.

- Molecule 1 is a protein called Ferulic acid decarboxylase 1.

Mol	Chain	Residues	Atoms					ZeroOcc	AltConf	Trace
1	A	500	Total	C	N	O	S	0	33	1
			4100	2595	706	769	30			

There are 9 discrepancies between the modelled and reference sequences:

Chain	Residue	Modelled	Actual	Comment	Reference
A	277	GLN	GLU	engineered mutation	UNP A2QHE5
A	501	LEU	-	expression tag	UNP A2QHE5
A	502	GLU	-	expression tag	UNP A2QHE5
A	503	HIS	-	expression tag	UNP A2QHE5
A	504	HIS	-	expression tag	UNP A2QHE5
A	505	HIS	-	expression tag	UNP A2QHE5
A	506	HIS	-	expression tag	UNP A2QHE5
A	507	HIS	-	expression tag	UNP A2QHE5
A	508	HIS	-	expression tag	UNP A2QHE5

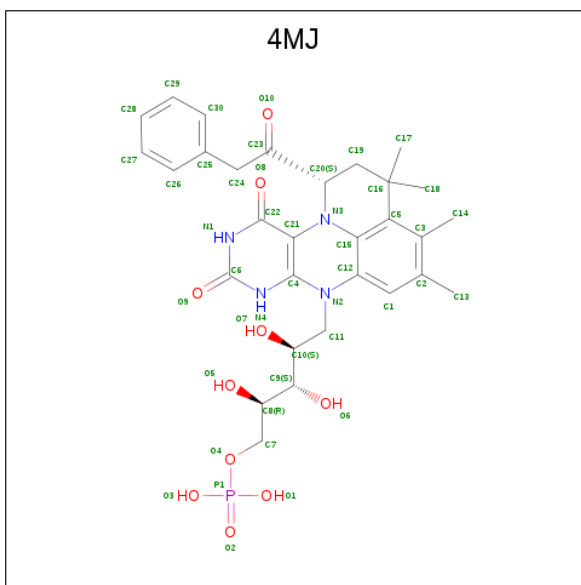
- Molecule 2 is MANGANESE (II) ION (three-letter code: MN) (formula: Mn).

Mol	Chain	Residues	Atoms		ZeroOcc	AltConf
2	A	1	Total	Mn	0	0
			1	1		

- Molecule 3 is POTASSIUM ION (three-letter code: K) (formula: K).

Mol	Chain	Residues	Atoms		ZeroOcc	AltConf
3	A	2	Total	K	0	0
			2	2		

- Molecule 4 is 1-deoxy-5-O-phosphono-1-[(1S)-3,3,4,5-tetramethyl-9,11-dioxo-1-(phenylacetyl)-2,3,8,9,10,11-hexahydro-1H,7H-quinolino[1,8-fg]pteridin-7-yl]-D-ribitol (three-letter code: 4MJ) (formula: C₃₀H₃₇N₄O₁₀P).



Mol	Chain	Residues	Atoms					ZeroOcc	AltConf
4	A	1	Total	C	N	O	P	0	0
			45	30	4	10	1		

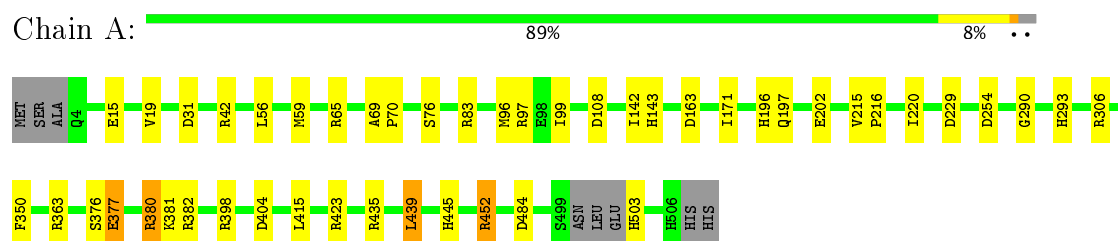
- Molecule 5 is water.

Mol	Chain	Residues	Atoms	ZeroOcc	AltConf
5	A	555	Total O 555 555	0	0

3 Residue-property plots

These plots are drawn for all protein, RNA and DNA chains in the entry. The first graphic for a chain summarises the proportions of the various outlier classes displayed in the second graphic. The second graphic shows the sequence view annotated by issues in geometry and electron density. Residues are color-coded according to the number of geometric quality criteria for which they contain at least one outlier: green = 0, yellow = 1, orange = 2 and red = 3 or more. A red dot above a residue indicates a poor fit to the electron density ($\text{RSRZ} > 2$). Stretches of 2 or more consecutive residues without any outlier are shown as a green connector. Residues present in the sample, but not in the model, are shown in grey.

- Molecule 1: Ferulic acid decarboxylase 1



4 Data and refinement statistics

Property	Value	Source
Space group	P 21 21 2	Depositor
Cell constants a, b, c, α , β , γ	96.27Å 63.73Å 87.42Å 90.00° 90.00° 90.00°	Depositor
Resolution (Å)	53.14 – 1.64 53.14 – 1.64	Depositor EDS
% Data completeness (in resolution range)	99.8 (53.14-1.64) 99.8 (53.14-1.64)	Depositor EDS
R_{merge}	(Not available)	Depositor
R_{sym}	(Not available)	Depositor
$\langle I/\sigma(I) \rangle$ ¹	2.16 (at 1.64Å)	Xtriage
Refinement program	REFMAC 5.8.0158	Depositor
R, R_{free}	0.146 , 0.176 0.158 , 0.182	Depositor DCC
R_{free} test set	3376 reflections (5.35%)	DCC
Wilson B-factor (Å ²)	15.1	Xtriage
Anisotropy	0.307	Xtriage
Bulk solvent k_{sol} (e/Å ³), B_{sol} (Å ²)	0.33 , 42.8	EDS
L-test for twinning ²	$\langle L \rangle = 0.48$, $\langle L^2 \rangle = 0.31$	Xtriage
Estimated twinning fraction	No twinning to report.	Xtriage
F_o, F_c correlation	0.97	EDS
Total number of atoms	4703	wwPDB-VP
Average B, all atoms (Å ²)	17.0	wwPDB-VP

Xtriage's analysis on translational NCS is as follows: *The largest off-origin peak in the Patterson function is 4.85% of the height of the origin peak. No significant pseudotranslation is detected.*

¹Intensities estimated from amplitudes.

²Theoretical values of $\langle |L| \rangle$, $\langle L^2 \rangle$ for acentric reflections are 0.5, 0.333 respectively for untwinned datasets, and 0.375, 0.2 for perfectly twinned datasets.

5 Model quality

5.1 Standard geometry

Bond lengths and bond angles in the following residue types are not validated in this section: K, MN, 4MJ

The Z score for a bond length (or angle) is the number of standard deviations the observed value is removed from the expected value. A bond length (or angle) with $|Z| > 5$ is considered an outlier worth inspection. RMSZ is the root-mean-square of all Z scores of the bond lengths (or angles).

Mol	Chain	Bond lengths		Bond angles	
		RMSZ	$\# Z > 5$	RMSZ	$\# Z > 5$
1	A	1.12	5/4201 (0.1%)	1.16	33/5708 (0.6%)

Chiral center outliers are detected by calculating the chiral volume of a chiral center and verifying if the center is modelled as a planar moiety or with the opposite hand. A planarity outlier is detected by checking planarity of atoms in a peptide group, atoms in a mainchain group or atoms of a sidechain that are expected to be planar.

Mol	Chain	#Chirality outliers	#Planarity outliers
1	A	0	1

All (5) bond length outliers are listed below:

Mol	Chain	Res	Type	Atoms	Z	Observed(Å)	Ideal(Å)
1	A	65	ARG	CZ-NH1	-9.04	1.21	1.33
1	A	377[A]	GLU	CD-OE1	7.67	1.34	1.25
1	A	377[B]	GLU	CD-OE1	7.67	1.34	1.25
1	A	202	GLU	CD-OE2	6.29	1.32	1.25
1	A	452	ARG	CZ-NH1	5.09	1.39	1.33

All (33) bond angle outliers are listed below:

Mol	Chain	Res	Type	Atoms	Z	Observed(°)	Ideal(°)
1	A	229	ASP	CB-CG-OD1	10.84	128.06	118.30
1	A	435	ARG	NE-CZ-NH2	-10.59	115.01	120.30
1	A	380	ARG	NE-CZ-NH1	9.42	125.01	120.30
1	A	83	ARG	NE-CZ-NH1	8.86	124.73	120.30
1	A	65	ARG	NE-CZ-NH2	8.38	124.49	120.30
1	A	363	ARG	NE-CZ-NH1	8.19	124.39	120.30
1	A	306	ARG	NE-CZ-NH1	7.93	124.26	120.30
1	A	435	ARG	NE-CZ-NH1	7.74	124.17	120.30

Continued on next page...

Continued from previous page...

Mol	Chain	Res	Type	Atoms	Z	Observed(°)	Ideal(°)
1	A	65	ARG	NE-CZ-NH1	-7.72	116.44	120.30
1	A	404	ASP	CB-CG-OD1	-7.62	111.44	118.30
1	A	452	ARG	NE-CZ-NH1	7.42	124.01	120.30
1	A	163	ASP	CB-CG-OD1	6.76	124.38	118.30
1	A	439[A]	LEU	CB-CG-CD2	-6.60	99.78	111.00
1	A	439[B]	LEU	CB-CG-CD2	-6.60	99.78	111.00
1	A	404	ASP	CB-CG-OD2	6.59	124.23	118.30
1	A	380	ARG	CG-CD-NE	6.59	125.64	111.80
1	A	31	ASP	CB-CG-OD1	6.58	124.23	118.30
1	A	484[A]	ASP	CB-CG-OD1	6.30	123.97	118.30
1	A	484[B]	ASP	CB-CG-OD1	6.30	123.97	118.30
1	A	363	ARG	NE-CZ-NH2	-6.28	117.16	120.30
1	A	306	ARG	NE-CZ-NH2	-6.25	117.17	120.30
1	A	452	ARG	NE-CZ-NH2	-6.23	117.18	120.30
1	A	229	ASP	CB-CG-OD2	-5.98	112.91	118.30
1	A	423	ARG	NE-CZ-NH2	-5.86	117.37	120.30
1	A	380	ARG	NE-CZ-NH2	-5.66	117.47	120.30
1	A	382	ARG	NE-CZ-NH1	5.55	123.08	120.30
1	A	254	ASP	CB-CG-OD1	5.54	123.28	118.30
1	A	398	ARG	NE-CZ-NH1	-5.49	117.56	120.30
1	A	377[A]	GLU	CG-CD-OE2	-5.36	107.58	118.30
1	A	377[B]	GLU	CG-CD-OE2	-5.36	107.58	118.30
1	A	42[A]	ARG	NE-CZ-NH2	-5.16	117.72	120.30
1	A	42[B]	ARG	NE-CZ-NH2	-5.16	117.72	120.30
1	A	97	ARG	NE-CZ-NH2	-5.01	117.80	120.30

There are no chirality outliers.

All (1) planarity outliers are listed below:

Mol	Chain	Res	Type	Group
1	A	290[B]	GLY	Peptide

5.2 Too-close contacts ⓘ

In the following table, the Non-H and H(model) columns list the number of non-hydrogen atoms and hydrogen atoms in the chain respectively. The H(added) column lists the number of hydrogen atoms added and optimized by MolProbity. The Clashes column lists the number of clashes within the asymmetric unit, whereas Symm-Clashes lists symmetry related clashes.

Mol	Chain	Non-H	H(model)	H(added)	Clashes	Symm-Clashes
1	A	4100	0	3983	25	0

Continued on next page...

Continued from previous page...

Mol	Chain	Non-H	H(model)	H(added)	Clashes	Symm-Clashes
2	A	1	0	0	0	0
3	A	2	0	0	0	0
4	A	45	0	37	2	0
5	A	555	0	0	12	1
All	All	4703	0	4020	27	1

The all-atom clashscore is defined as the number of clashes found per 1000 atoms (including hydrogen atoms). The all-atom clashscore for this structure is 3.

All (27) close contacts within the same asymmetric unit are listed below, sorted by their clash magnitude.

Atom-1	Atom-2	Interatomic distance (Å)	Clash overlap (Å)
1:A:415[A]:LEU:HD12	5:A:1150:HOH:O	1.71	0.90
1:A:59[A]:MET:CE	5:A:985:HOH:O	2.23	0.86
4:A:604:4MJ:H18	4:A:604:4MJ:H26	1.58	0.86
1:A:381:LYS:HG3	5:A:703:HOH:O	1.85	0.77
1:A:415[A]:LEU:CD1	5:A:1150:HOH:O	2.30	0.75
4:A:604:4MJ:H18	4:A:604:4MJ:C18	2.17	0.74
1:A:59[A]:MET:SD	5:A:985:HOH:O	2.46	0.72
1:A:381:LYS:HE3	5:A:703:HOH:O	2.00	0.61
1:A:15[A]:GLU:O	1:A:19[A]:VAL:HG23	2.02	0.60
1:A:96[B]:MET:HA	1:A:96[B]:MET:HE2	1.84	0.58
1:A:293:HIS:CB	5:A:1099:HOH:O	2.50	0.58
1:A:197:GLN:HG2	5:A:701:HOH:O	2.05	0.55
1:A:503:HIS:N	5:A:705:HOH:O	2.41	0.53
1:A:96[B]:MET:HE2	1:A:99:ILE:HD12	1.93	0.51
1:A:96[B]:MET:HG2	1:A:350:PHE:CE1	2.45	0.50
1:A:96[A]:MET:HG2	1:A:350:PHE:CE1	2.48	0.48
1:A:376:SER:O	1:A:380:ARG:HG3	2.15	0.46
1:A:108[A]:ASP:O	1:A:108[A]:ASP:CG	2.55	0.45
1:A:377[B]:GLU:HG3	5:A:703:HOH:O	2.18	0.44
1:A:445:HIS:HE1	5:A:762:HOH:O	2.01	0.43
1:A:215:VAL:HB	1:A:216:PRO:HD2	2.01	0.43
1:A:142:ILE:HG22	1:A:143:HIS:CE1	2.54	0.43
1:A:56[B]:LEU:HA	1:A:56[B]:LEU:HD23	1.90	0.42
1:A:439[B]:LEU:HD23	1:A:439[B]:LEU:N	2.35	0.41
1:A:69:ALA:N	1:A:70:PRO:CD	2.83	0.41
1:A:196[A]:HIS:HD2	5:A:701:HOH:O	2.04	0.41
1:A:171:ILE:HD11	1:A:220:ILE:HG13	2.03	0.40

All (1) symmetry-related close contacts are listed below. The label for Atom-2 includes the sym-

metry operator and encoded unit-cell translations to be applied.

Atom-1	Atom-2	Interatomic distance (Å)	Clash overlap (Å)
5:A:894:HOH:O	5:A:894:HOH:O[2_655]	0.93	1.27

5.3 Torsion angles [i](#)

5.3.1 Protein backbone [i](#)

In the following table, the Percentiles column shows the percent Ramachandran outliers of the chain as a percentile score with respect to all X-ray entries followed by that with respect to entries of similar resolution.

The Analysed column shows the number of residues for which the backbone conformation was analysed, and the total number of residues.

Mol	Chain	Analysed	Favoured	Allowed	Outliers	Percentiles	
1	A	529/508 (104%)	517 (98%)	12 (2%)	0	100	100

There are no Ramachandran outliers to report.

5.3.2 Protein sidechains [i](#)

In the following table, the Percentiles column shows the percent sidechain outliers of the chain as a percentile score with respect to all X-ray entries followed by that with respect to entries of similar resolution.

The Analysed column shows the number of residues for which the sidechain conformation was analysed, and the total number of residues.

Mol	Chain	Analysed	Rotameric	Outliers	Percentiles	
1	A	442/430 (103%)	439 (99%)	3 (1%)	87	75

All (3) residues with a non-rotameric sidechain are listed below:

Mol	Chain	Res	Type
1	A	76[A]	SER
1	A	76[B]	SER
1	A	452	ARG

Some sidechains can be flipped to improve hydrogen bonding and reduce clashes. All (1) such sidechains are listed below:

Mol	Chain	Res	Type
1	A	445	HIS

5.3.3 RNA [i](#)

There are no RNA molecules in this entry.

5.4 Non-standard residues in protein, DNA, RNA chains [i](#)

There are no non-standard protein/DNA/RNA residues in this entry.

5.5 Carbohydrates [i](#)

There are no carbohydrates in this entry.

5.6 Ligand geometry [i](#)

Of 4 ligands modelled in this entry, 3 are monoatomic - leaving 1 for Mogul analysis.

In the following table, the Counts columns list the number of bonds (or angles) for which Mogul statistics could be retrieved, the number of bonds (or angles) that are observed in the model and the number of bonds (or angles) that are defined in the Chemical Component Dictionary. The Link column lists molecule types, if any, to which the group is linked. The Z score for a bond length (or angle) is the number of standard deviations the observed value is removed from the expected value. A bond length (or angle) with $|Z| > 2$ is considered an outlier worth inspection. RMSZ is the root-mean-square of all Z scores of the bond lengths (or angles).

Mol	Type	Chain	Res	Link	Bond lengths			Bond angles		
					Counts	RMSZ	# $ Z > 2$	Counts	RMSZ	# $ Z > 2$
4	4MJ	A	604	3,2	42,49,49	1.80	7 (16%)	51,76,76	2.56	14 (27%)

In the following table, the Chirals column lists the number of chiral outliers, the number of chiral centers analysed, the number of these observed in the model and the number defined in the Chemical Component Dictionary. Similar counts are reported in the Torsion and Rings columns. '-' means no outliers of that kind were identified.

Mol	Type	Chain	Res	Link	Chirals	Torsions	Rings
4	4MJ	A	604	3,2	-	0/23/41/41	0/4/5/5

All (7) bond length outliers are listed below:

Mol	Chain	Res	Type	Atoms	Z	Observed(Å)	Ideal(Å)
4	A	604	4MJ	C24-C25	-5.22	1.43	1.51
4	A	604	4MJ	C16-C5	-5.11	1.50	1.54
4	A	604	4MJ	C14-C3	-3.15	1.45	1.51
4	A	604	4MJ	C6-N4	-2.06	1.34	1.38
4	A	604	4MJ	O10-C23	2.20	1.25	1.21
4	A	604	4MJ	C22-N1	3.38	1.39	1.33
4	A	604	4MJ	C4-N4	4.43	1.39	1.33

All (14) bond angle outliers are listed below:

Mol	Chain	Res	Type	Atoms	Z	Observed(°)	Ideal(°)
4	A	604	4MJ	C21-C22-N1	-4.18	117.53	123.48
4	A	604	4MJ	C14-C3-C2	-3.66	112.80	119.73
4	A	604	4MJ	C22-C21-C4	-2.80	117.69	119.96
4	A	604	4MJ	C21-N3-C15	-2.75	119.17	121.76
4	A	604	4MJ	C12-C15-N3	-2.58	118.72	120.54
4	A	604	4MJ	C11-N2-C4	-2.23	116.21	118.50
4	A	604	4MJ	O4-P1-O2	-2.18	100.36	106.47
4	A	604	4MJ	C13-C2-C1	-2.11	115.06	120.34
4	A	604	4MJ	C4-C21-N3	-2.00	117.17	120.15
4	A	604	4MJ	C18-C16-C5	2.34	116.80	111.85
4	A	604	4MJ	C13-C2-C3	2.92	126.05	121.18
4	A	604	4MJ	C23-C20-N3	4.10	117.48	110.66
4	A	604	4MJ	C11-N2-C12	7.75	125.45	118.35
4	A	604	4MJ	C22-N1-C6	11.71	125.40	115.16

There are no chirality outliers.

There are no torsion outliers.

There are no ring outliers.

1 monomer is involved in 2 short contacts:

Mol	Chain	Res	Type	Clashes	Symm-Clashes
4	A	604	4MJ	2	0

5.7 Other polymers ⓘ

There are no such residues in this entry.

5.8 Polymer linkage issues

There are no chain breaks in this entry.

6 Fit of model and data [i](#)

6.1 Protein, DNA and RNA chains [i](#)

In the following table, the column labelled ‘#RSRZ> 2’ contains the number (and percentage) of RSRZ outliers, followed by percent RSRZ outliers for the chain as percentile scores relative to all X-ray entries and entries of similar resolution. The OWAB column contains the minimum, median, 95th percentile and maximum values of the occupancy-weighted average B-factor per residue. The column labelled ‘Q< 0.9’ lists the number of (and percentage) of residues with an average occupancy less than 0.9.

Mol	Chain	Analysed	<RSRZ>	#RSRZ>2	OWAB(Å ²)	Q<0.9
1	A	500/508 (98%)	-0.61	0 100 100	9, 14, 25, 53	0

There are no RSRZ outliers to report.

6.2 Non-standard residues in protein, DNA, RNA chains [i](#)

There are no non-standard protein/DNA/RNA residues in this entry.

6.3 Carbohydrates [i](#)

There are no carbohydrates in this entry.

6.4 Ligands [i](#)

In the following table, the Atoms column lists the number of modelled atoms in the group and the number defined in the chemical component dictionary. LLDF column lists the quality of electron density of the group with respect to its neighbouring residues in protein, DNA or RNA chains. The B-factors column lists the minimum, median, 95th percentile and maximum values of B factors of atoms in the group. The column labelled ‘Q< 0.9’ lists the number of atoms with occupancy less than 0.9.

Mol	Type	Chain	Res	Atoms	RSCC	RSR	LLDF	B-factors(Å ²)	Q<0.9
3	K	A	603	1/1	1.00	0.06	-0.15	11,11,11,11	0
3	K	A	602	1/1	1.00	0.06	-0.26	9,9,9,9	0
4	4MJ	A	604	45/45	0.98	0.06	-0.33	8,9,15,18	0
2	MN	A	601	1/1	1.00	0.03	-5.56	12,12,12,12	0

6.5 Other polymers [i](#)

There are no such residues in this entry.