



Full wwPDB X-ray Structure Validation Report ⓘ

Jan 14, 2018 – 09:18 PM EST

PDB ID : 6EWZ
Title : Crystal structure of RelP (SAS2) from *Staphylococcus aureus* bound to AM-PCPP and GTP in the pre-catalytic state
Authors : Manav, M.C.; Brodersen, D.E.
Deposited on : 2017-11-07
Resolution : 2.24 Å(reported)

This is a Full wwPDB X-ray Structure Validation Report for a publicly released PDB entry.

We welcome your comments at validation@mail.wwpdb.org

A user guide is available at

<http://wwpdb.org/validation/2016/XrayValidationReportHelp>

with specific help available everywhere you see the ⓘ symbol.

The following versions of software and data (see [references ⓘ](#)) were used in the production of this report:

MolProbity : 4.02b-467
Mogul : 1.7.2 (RC1), CSD as538be (2017)
Xtriage (Phenix) : 1.9-1692
EDS : rb-20030736
Percentile statistics : 20161228.v01 (using entries in the PDB archive December 28th 2016)
Refmac : 5.8.0135
CCP4 : 6.5.0
Ideal geometry (proteins) : Engh & Huber (2001)
Ideal geometry (DNA, RNA) : Parkinson et al. (1996)
Validation Pipeline (wwPDB-VP) : rb-20030736

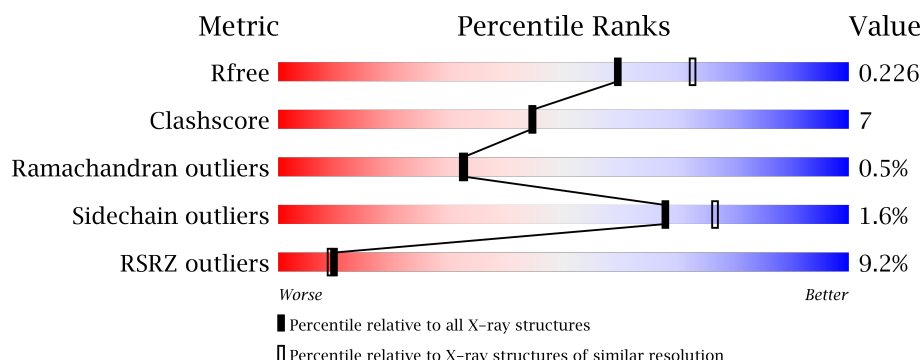
1 Overall quality at a glance

The following experimental techniques were used to determine the structure:

X-RAY DIFFRACTION

The reported resolution of this entry is 2.24 Å.

Percentile scores (ranging between 0-100) for global validation metrics of the entry are shown in the following graphic. The table shows the number of entries on which the scores are based.



Metric	Whole archive (#Entries)	Similar resolution (#Entries, resolution range(Å))
R_{free}	100719	1804 (2.26-2.22)
Clashscore	112137	1957 (2.26-2.22)
Ramachandran outliers	110173	1916 (2.26-2.22)
Sidechain outliers	110143	1917 (2.26-2.22)
RSRZ outliers	101464	1809 (2.26-2.22)

The table below summarises the geometric issues observed across the polymeric chains and their fit to the electron density. The red, orange, yellow and green segments on the lower bar indicate the fraction of residues that contain outliers for ≥ 3 , 2, 1 and 0 types of geometric quality criteria. A grey segment represents the fraction of residues that are not modelled. The numeric value for each fraction is indicated below the corresponding segment, with a dot representing fractions $\leq 5\%$. The upper red bar (where present) indicates the fraction of residues that have poor fit to the electron density. The numeric value is given above the bar.

Mol	Chain	Length	Quality of chain
1	A	237	<div> <div>6%</div> <div>73%</div> <div>11%</div> <div>15%</div> </div>
1	B	237	<div> <div>9%</div> <div>70%</div> <div>13%</div> <div>16%</div> </div>

The following table lists non-polymeric compounds, carbohydrate monomers and non-standard residues in protein, DNA, RNA chains that are outliers for geometric or electron-density-fit criteria:

Mol	Type	Chain	Res	Chirality	Geometry	Clashes	Electron density
3	APC	A	302	X	-	-	-
3	APC	B	302	X	-	-	-

2 Entry composition

There are 6 unique types of molecules in this entry. The entry contains 3666 atoms, of which 52 are hydrogens and 0 are deuteriums.

In the tables below, the ZeroOcc column contains the number of atoms modelled with zero occupancy, the AltConf column contains the number of residues with at least one atom in alternate conformation and the Trace column contains the number of residues modelled with at most 2 atoms.

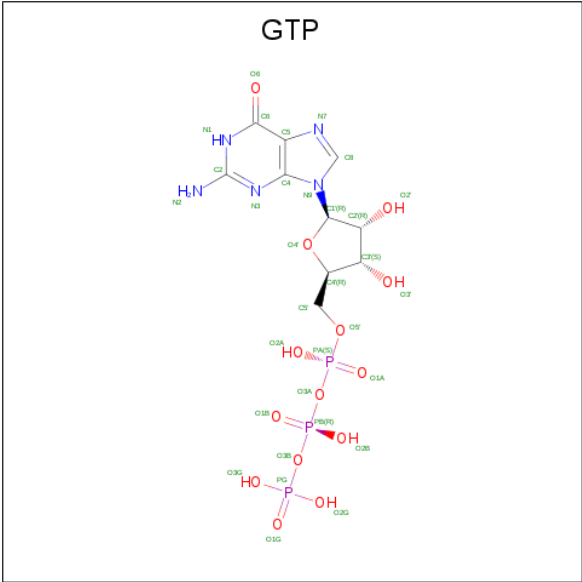
- Molecule 1 is a protein called GTP pyrophosphokinase.

Mol	Chain	Residues	Atoms					ZeroOcc	AltConf	Trace
1	A	202	Total	C	N	O	S	8	4	0
			1705	1082	294	322	7			
1	B	200	Total	C	N	O	S	8	3	0
			1681	1066	291	316	8			

There are 14 discrepancies between the modelled and reference sequences:

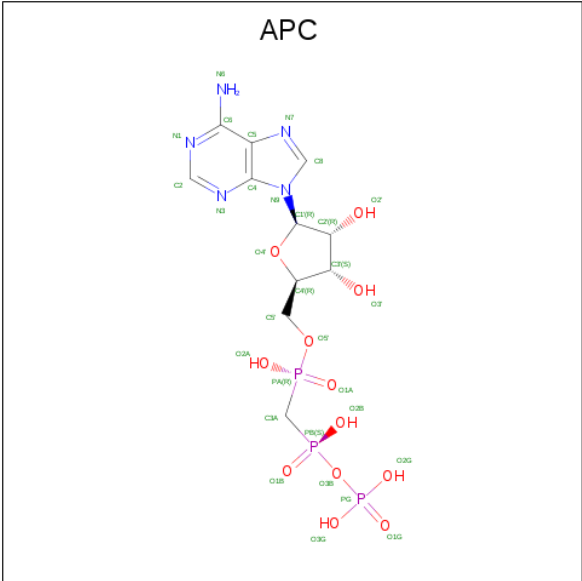
Chain	Residue	Modelled	Actual	Comment	Reference
A	231	GLY	-	expression tag	UNP W8U368
A	232	HIS	-	expression tag	UNP W8U368
A	233	HIS	-	expression tag	UNP W8U368
A	234	HIS	-	expression tag	UNP W8U368
A	235	HIS	-	expression tag	UNP W8U368
A	236	HIS	-	expression tag	UNP W8U368
A	237	HIS	-	expression tag	UNP W8U368
B	231	GLY	-	expression tag	UNP W8U368
B	232	HIS	-	expression tag	UNP W8U368
B	233	HIS	-	expression tag	UNP W8U368
B	234	HIS	-	expression tag	UNP W8U368
B	235	HIS	-	expression tag	UNP W8U368
B	236	HIS	-	expression tag	UNP W8U368
B	237	HIS	-	expression tag	UNP W8U368

- Molecule 2 is GUANOSINE-5'-TRIPHOSPHATE (three-letter code: GTP) (formula: C₁₀H₁₆N₅O₁₄P₃).



Mol	Chain	Residues	Atoms						ZeroOcc	AltConf
2	A	1	Total	C	H	N	O	P	0	0
			44	10	12	5	14	3		
2	B	1	Total	C	H	N	O	P	0	0
			44	10	12	5	14	3		

- Molecule 3 is DIPHOSPHOMETHYLPHOSPHONIC ACID ADENOSYL ESTER (three-letter code: APC) (formula: C₁₁H₁₈N₅O₁₂P₃).



Mol	Chain	Residues	Atoms						ZeroOcc	AltConf
3	A	1	Total	C	H	N	O	P	0	0
			45	11	14	5	12	3		

Continued on next page...

Continued from previous page...

Mol	Chain	Residues	Atoms						ZeroOcc	AltConf
3	B	1	Total	C	H	N	O	P	0	0
			45	11	14	5	12	3		

- Molecule 4 is MAGNESIUM ION (three-letter code: MG) (formula: Mg).

Mol	Chain	Residues	Atoms		ZeroOcc	AltConf
4	B	1	Total	Mg	0	0
			1	1		
4	A	1	Total	Mg	0	0
			1	1		

- Molecule 5 is FE (III) ION (three-letter code: FE) (formula: Fe).

Mol	Chain	Residues	Atoms		ZeroOcc	AltConf
5	A	1	Total	Fe	0	0
			1	1		

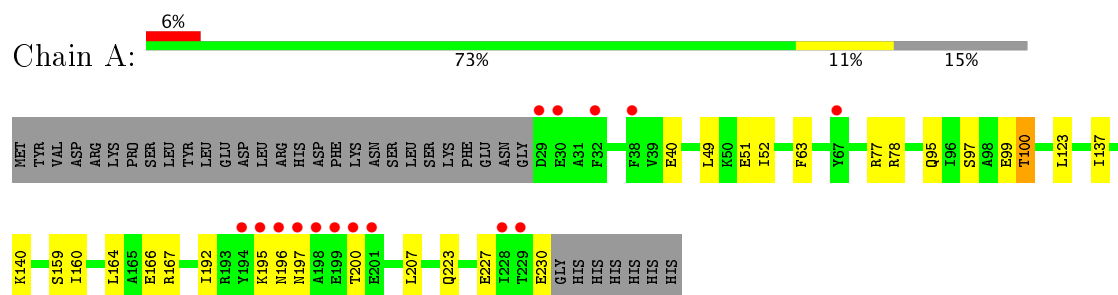
- Molecule 6 is water.

Mol	Chain	Residues	Atoms		ZeroOcc	AltConf
6	A	65	Total	O	0	0
			65	65		
6	B	34	Total	O	0	0
			34	34		

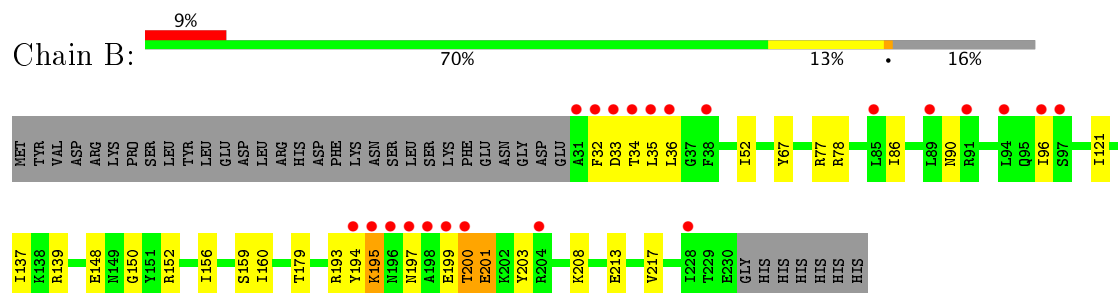
3 Residue-property plots [i](#)

These plots are drawn for all protein, RNA and DNA chains in the entry. The first graphic for a chain summarises the proportions of the various outlier classes displayed in the second graphic. The second graphic shows the sequence view annotated by issues in geometry and electron density. Residues are color-coded according to the number of geometric quality criteria for which they contain at least one outlier: green = 0, yellow = 1, orange = 2 and red = 3 or more. A red dot above a residue indicates a poor fit to the electron density ($RSRZ > 2$). Stretches of 2 or more consecutive residues without any outlier are shown as a green connector. Residues present in the sample, but not in the model, are shown in grey.

- Molecule 1: GTP pyrophosphokinase



- Molecule 1: GTP pyrophosphokinase



4 Data and refinement statistics

Property	Value	Source
Space group	I 41 2 2	Depositor
Cell constants a, b, c, α , β , γ	125.12Å 125.12Å 219.07Å 90.00° 90.00° 90.00°	Depositor
Resolution (Å)	63.07 – 2.24 63.07 – 2.24	Depositor EDS
% Data completeness (in resolution range)	100.0 (63.07-2.24) 93.6 (63.07-2.24)	Depositor EDS
R_{merge}	0.06	Depositor
R_{sym}	(Not available)	Depositor
$\langle I/\sigma(I) \rangle$ ¹	1.89 (at 2.25Å)	Xtriage
Refinement program	PHENIX	Depositor
R, R_{free}	0.193 , 0.234 0.188 , 0.226	Depositor DCC
R_{free} test set	1959 reflections (4.98%)	DCC
Wilson B-factor (Å ²)	58.1	Xtriage
Anisotropy	0.247	Xtriage
Bulk solvent k_{sol} (e/Å ³), B_{sol} (Å ²)	0.35 , 63.1	EDS
L-test for twinning ²	$\langle L \rangle = 0.50$, $\langle L^2 \rangle = 0.33$	Xtriage
Estimated twinning fraction	No twinning to report.	Xtriage
F_o, F_c correlation	0.96	EDS
Total number of atoms	3666	wwPDB-VP
Average B, all atoms (Å ²)	83.0	wwPDB-VP

Xtriage's analysis on translational NCS is as follows: *The largest off-origin peak in the Patterson function is 4.52% of the height of the origin peak. No significant pseudotranslation is detected.*

¹Intensities estimated from amplitudes.

²Theoretical values of $\langle |L| \rangle$, $\langle L^2 \rangle$ for acentric reflections are 0.5, 0.333 respectively for untwinned datasets, and 0.375, 0.2 for perfectly twinned datasets.

5 Model quality

5.1 Standard geometry

Bond lengths and bond angles in the following residue types are not validated in this section: GTP, APC, MG, FE

The Z score for a bond length (or angle) is the number of standard deviations the observed value is removed from the expected value. A bond length (or angle) with $|Z| > 5$ is considered an outlier worth inspection. RMSZ is the root-mean-square of all Z scores of the bond lengths (or angles).

Mol	Chain	Bond lengths		Bond angles	
		RMSZ	$\# Z > 5$	RMSZ	$\# Z > 5$
1	A	0.45	0/1732	0.56	0/2334
1	B	0.37	0/1708	0.52	0/2300
All	All	0.41	0/3440	0.54	0/4634

There are no bond length outliers.

There are no bond angle outliers.

There are no chirality outliers.

There are no planarity outliers.

5.2 Too-close contacts

In the following table, the Non-H and H(model) columns list the number of non-hydrogen atoms and hydrogen atoms in the chain respectively. The H(added) column lists the number of hydrogen atoms added and optimized by MolProbity. The Clashes column lists the number of clashes within the asymmetric unit, whereas Symm-Clashes lists symmetry related clashes.

Mol	Chain	Non-H	H(model)	H(added)	Clashes	Symm-Clashes
1	A	1705	0	1728	24	0
1	B	1681	0	1703	29	0
2	A	32	12	12	1	0
2	B	32	12	12	0	0
3	A	31	14	13	0	0
3	B	31	14	13	0	0
4	A	1	0	0	0	0
4	B	1	0	0	0	0
5	A	1	0	0	0	0
6	A	65	0	0	1	0
6	B	34	0	0	1	0
All	All	3614	52	3481	52	0

The all-atom clashscore is defined as the number of clashes found per 1000 atoms (including hydrogen atoms). The all-atom clashscore for this structure is 7.

All (52) close contacts within the same asymmetric unit are listed below, sorted by their clash magnitude.

Atom-1	Atom-2	Interatomic distance (Å)	Clash overlap (Å)
1:A:52[B]:ILE:HD11	1:A:160:ILE:HG21	1.39	1.02
1:A:99:GLU:OE1	6:A:401:HOH:O	1.77	1.01
1:A:52[B]:ILE:HG12	1:A:160:ILE:HD13	1.45	0.99
1:A:52[B]:ILE:HD11	1:A:160:ILE:CG2	2.03	0.87
1:A:52[B]:ILE:CD1	1:A:160:ILE:HG21	2.11	0.81
1:B:52:ILE:HD11	1:B:160:ILE:HG21	1.69	0.74
1:A:197:ASN:HA	1:A:200:THR:HG22	1.70	0.72
1:A:137:ILE:HD11	1:A:159:SER:HB3	1.71	0.71
1:B:201:GLU:OE2	1:B:201:GLU:HA	1.89	0.70
1:B:34:THR:O	1:B:36:LEU:HD12	1.91	0.70
1:B:148:GLU:O	1:B:208:LYS:HE2	1.91	0.70
1:A:197:ASN:O	1:A:200:THR:HG22	1.98	0.64
1:B:152[B]:ARG:HD2	6:B:421:HOH:O	1.98	0.63
1:B:52:ILE:HD11	1:B:160:ILE:CG2	2.27	0.63
1:A:95:GLN:O	1:A:100[A]:THR:HG21	1.97	0.63
1:B:34:THR:O	1:B:34:THR:HG23	2.00	0.62
1:A:52[B]:ILE:CG1	1:A:160:ILE:HD13	2.27	0.61
1:B:137:ILE:HD11	1:B:159:SER:HB3	1.84	0.59
1:A:140:LYS:NZ	2:A:301:GTP:O1B	2.37	0.57
1:B:52:ILE:CD1	1:B:160:ILE:HG21	2.32	0.57
1:B:90:ASN:OD1	1:B:96:ILE:HD11	2.06	0.56
1:A:197:ASN:CA	1:A:200:THR:HG22	2.36	0.55
1:A:197:ASN:HA	1:A:200:THR:CG2	2.36	0.55
1:B:139:ARG:HG3	1:B:156:ILE:HG22	1.89	0.54
1:B:160:ILE:O	1:B:160:ILE:HD12	2.08	0.54
1:B:200:THR:HG23	1:B:203:TYR:CE2	2.44	0.53
1:A:166:GLU:OE2	1:B:67:TYR:OH	2.21	0.50
1:B:193:ARG:NH1	1:B:194:TYR:HE2	2.09	0.50
1:B:200:THR:HG22	1:B:200:THR:O	2.11	0.49
1:B:200:THR:HG23	1:B:203:TYR:HE2	1.77	0.49
1:B:86:ILE:HG23	1:B:96:ILE:HD12	1.95	0.48
1:B:160:ILE:HD12	1:B:160:ILE:C	2.33	0.48
1:B:199:GLU:O	1:B:200:THR:HB	2.14	0.47
1:A:192:ILE:HD12	1:A:207:LEU:HD11	1.97	0.47
1:B:195:LYS:HB3	1:B:195:LYS:HE2	1.77	0.46
1:A:192:ILE:O	1:A:195:LYS:HG2	2.17	0.44
1:A:227:GLU:O	1:A:230:GLU:HG3	2.17	0.44

Continued on next page...

Continued from previous page...

Atom-1	Atom-2	Interatomic distance (Å)	Clash overlap (Å)
1:A:97:SER:O	1:A:100[A]:THR:HG22	2.17	0.44
1:B:150:GLY:O	1:B:152[B]:ARG:NE	2.44	0.44
1:B:195:LYS:O	1:B:197:ASN:N	2.51	0.43
1:B:33:ASP:HB3	1:B:35:LEU:HD13	2.00	0.43
1:A:223:GLN:O	1:A:227:GLU:HG3	2.19	0.43
1:A:51:GLU:HB2	1:A:160:ILE:HD12	2.00	0.43
1:A:49:LEU:HD13	1:A:77:ARG:HB3	2.01	0.42
1:B:199:GLU:O	1:B:200:THR:CB	2.68	0.42
1:A:164[B]:LEU:HD12	1:A:164[B]:LEU:N	2.35	0.41
1:A:40:GLU:OE2	1:A:167:ARG:NH1	2.38	0.41
1:B:32:PHE:CG	1:B:33:ASP:N	2.88	0.41
1:B:121:ILE:HD11	1:B:179:THR:HG23	2.03	0.41
1:A:63:PHE:CE1	1:A:123:LEU:HD21	2.56	0.40
1:B:213:GLU:O	1:B:217:VAL:HG23	2.21	0.40
1:B:52:ILE:HD12	1:B:52:ILE:HG23	1.80	0.40

There are no symmetry-related clashes.

5.3 Torsion angles [i](#)

5.3.1 Protein backbone [i](#)

In the following table, the Percentiles column shows the percent Ramachandran outliers of the chain as a percentile score with respect to all X-ray entries followed by that with respect to entries of similar resolution.

The Analysed column shows the number of residues for which the backbone conformation was analysed, and the total number of residues.

Mol	Chain	Analysed	Favoured	Allowed	Outliers	Percentiles	
1	A	204/237 (86%)	196 (96%)	7 (3%)	1 (0%)	32	32
1	B	201/237 (85%)	192 (96%)	8 (4%)	1 (0%)	32	32
All	All	405/474 (85%)	388 (96%)	15 (4%)	2 (0%)	32	32

All (2) Ramachandran outliers are listed below:

Mol	Chain	Res	Type
1	B	200	THR
1	A	196	ASN

5.3.2 Protein sidechains [i](#)

In the following table, the Percentiles column shows the percent sidechain outliers of the chain as a percentile score with respect to all X-ray entries followed by that with respect to entries of similar resolution.

The Analysed column shows the number of residues for which the sidechain conformation was analysed, and the total number of residues.

Mol	Chain	Analysed	Rotameric	Outliers	Percentiles	
1	A	192/221 (87%)	189 (98%)	3 (2%)	68	76
1	B	189/221 (86%)	185 (98%)	4 (2%)	59	67
All	All	381/442 (86%)	374 (98%)	7 (2%)	68	73

All (7) residues with a non-rotameric sidechain are listed below:

Mol	Chain	Res	Type
1	A	78	ARG
1	A	100[A]	THR
1	A	100[B]	THR
1	B	77	ARG
1	B	78	ARG
1	B	195	LYS
1	B	201	GLU

Some sidechains can be flipped to improve hydrogen bonding and reduce clashes. There are no such sidechains identified.

5.3.3 RNA [i](#)

There are no RNA molecules in this entry.

5.4 Non-standard residues in protein, DNA, RNA chains [i](#)

There are no non-standard protein/DNA/RNA residues in this entry.

5.5 Carbohydrates [i](#)

There are no carbohydrates in this entry.

5.6 Ligand geometry

Of 7 ligands modelled in this entry, 3 are monoatomic - leaving 4 for Mogul analysis.

In the following table, the Counts columns list the number of bonds (or angles) for which Mogul statistics could be retrieved, the number of bonds (or angles) that are observed in the model and the number of bonds (or angles) that are defined in the Chemical Component Dictionary. The Link column lists molecule types, if any, to which the group is linked. The Z score for a bond length (or angle) is the number of standard deviations the observed value is removed from the expected value. A bond length (or angle) with $|Z| > 2$ is considered an outlier worth inspection. RMSZ is the root-mean-square of all Z scores of the bond lengths (or angles).

Mol	Type	Chain	Res	Link	Bond lengths			Bond angles		
					Counts	RMSZ	# Z > 2	Counts	RMSZ	# Z > 2
2	GTP	A	301	4	27,34,34	4.88	17 (62%)	24,54,54	3.97	6 (25%)
3	APC	A	302	4	28,33,33	3.28	14 (50%)	28,52,52	2.61	10 (35%)
2	GTP	B	301	4	27,34,34	5.01	16 (59%)	24,54,54	4.20	8 (33%)
3	APC	B	302	4	28,33,33	3.56	15 (53%)	28,52,52	2.38	10 (35%)

In the following table, the Chirals column lists the number of chiral outliers, the number of chiral centers analysed, the number of these observed in the model and the number defined in the Chemical Component Dictionary. Similar counts are reported in the Torsion and Rings columns. '-' means no outliers of that kind were identified.

Mol	Type	Chain	Res	Link	Chirals	Torsions	Rings
2	GTP	A	301	4	-	0/18/38/38	0/3/3/3
3	APC	A	302	4	1/1/7/7	0/15/38/38	0/3/3/3
2	GTP	B	301	4	-	0/18/38/38	0/3/3/3
3	APC	B	302	4	1/1/7/7	0/15/38/38	0/3/3/3

All (62) bond length outliers are listed below:

Mol	Chain	Res	Type	Atoms	Z	Observed(Å)	Ideal(Å)
3	B	302	APC	C8-N7	-7.61	1.20	1.34
3	A	302	APC	C4-N3	-7.09	1.25	1.35
3	A	302	APC	C8-N7	-7.07	1.21	1.34
3	B	302	APC	C4-N3	-6.59	1.25	1.35
2	B	301	GTP	C8-N7	-5.83	1.23	1.34
2	A	301	GTP	C8-N7	-5.72	1.24	1.34
3	A	302	APC	PB-O2B	-4.36	1.45	1.56
3	B	302	APC	PA-O2A	-4.12	1.46	1.56
3	A	302	APC	PA-O2A	-4.03	1.46	1.56
3	B	302	APC	PB-O2B	-4.01	1.46	1.56
2	B	301	GTP	C2'-C1'	-3.31	1.48	1.53

Continued on next page...

Continued from previous page...

Mol	Chain	Res	Type	Atoms	Z	Observed(Å)	Ideal(Å)
3	A	302	APC	C2'-C1'	-3.02	1.48	1.53
3	A	302	APC	C2'-C3'	-3.01	1.45	1.53
2	A	301	GTP	C2'-C3'	-2.98	1.45	1.53
2	B	301	GTP	C2'-C3'	-2.93	1.45	1.53
3	B	302	APC	C2'-C3'	-2.89	1.45	1.53
2	A	301	GTP	C2'-C1'	-2.57	1.49	1.53
2	B	301	GTP	PG-O2G	-2.26	1.45	1.54
2	A	301	GTP	PG-O2G	-2.18	1.45	1.54
3	B	302	APC	PA-O1A	-2.14	1.46	1.51
2	B	301	GTP	C3'-C4'	-2.13	1.47	1.53
2	A	301	GTP	C3'-C4'	-2.08	1.47	1.53
3	A	302	APC	PB-O1B	-2.08	1.46	1.51
3	B	302	APC	PG-O2G	-2.01	1.46	1.54
3	A	302	APC	PG-O2G	-2.00	1.46	1.54
3	B	302	APC	O4'-C4'	2.01	1.49	1.45
2	A	301	GTP	O3'-C3'	2.10	1.47	1.43
2	B	301	GTP	O3'-C3'	2.12	1.47	1.43
3	A	302	APC	C2-N1	2.31	1.38	1.33
2	A	301	GTP	O4'-C4'	2.40	1.50	1.45
2	B	301	GTP	PA-O5'	2.45	1.69	1.59
2	A	301	GTP	O2'-C2'	2.52	1.48	1.43
2	B	301	GTP	O4'-C4'	2.55	1.50	1.45
2	A	301	GTP	PA-O5'	2.58	1.70	1.59
3	B	302	APC	C6-N6	2.68	1.45	1.34
2	A	301	GTP	PG-O3B	2.77	1.64	1.60
3	A	302	APC	C6-N6	2.93	1.46	1.34
3	B	302	APC	C2-N1	2.98	1.39	1.33
3	B	302	APC	PG-O3B	3.33	1.65	1.60
2	B	301	GTP	PG-O3B	3.55	1.65	1.60
3	A	302	APC	PA-O5'	4.31	1.62	1.57
3	A	302	APC	PB-O3B	4.51	1.63	1.58
2	B	301	GTP	C5-C4	4.71	1.51	1.40
2	A	301	GTP	C5-C4	5.17	1.52	1.40
3	A	302	APC	C5-C4	5.39	1.52	1.40
3	B	302	APC	C5-C4	5.46	1.52	1.40
3	B	302	APC	O4'-C1'	5.50	1.48	1.41
3	A	302	APC	O4'-C1'	6.11	1.49	1.41
3	B	302	APC	PB-O3B	6.52	1.65	1.58
2	A	301	GTP	O6-C6	6.87	1.41	1.24
2	A	301	GTP	C2-N3	6.89	1.41	1.33
2	B	301	GTP	C2-N3	6.93	1.41	1.33
2	B	301	GTP	O6-C6	7.05	1.42	1.24

Continued on next page...

Continued from previous page...

Mol	Chain	Res	Type	Atoms	Z	Observed(Å)	Ideal(Å)
3	B	302	APC	PA-O5'	7.12	1.65	1.57
2	B	301	GTP	O4'-C1'	7.38	1.51	1.41
2	A	301	GTP	O4'-C1'	7.55	1.51	1.41
2	A	301	GTP	C6-N1	7.56	1.47	1.36
2	B	301	GTP	C6-N1	8.60	1.48	1.36
2	A	301	GTP	C2-N2	10.51	1.47	1.32
2	B	301	GTP	C2-N2	11.47	1.48	1.32
2	B	301	GTP	C2-N1	13.53	1.56	1.36
2	A	301	GTP	C2-N1	13.84	1.56	1.36

All (34) bond angle outliers are listed below:

Mol	Chain	Res	Type	Atoms	Z	Observed(°)	Ideal(°)
2	B	301	GTP	C4-C5-N7	-16.90	93.09	109.41
2	A	301	GTP	C4-C5-N7	-16.47	93.49	109.41
3	A	302	APC	C4-C5-N7	-7.67	102.00	109.41
3	B	302	APC	C4-C5-N7	-7.52	102.14	109.41
2	B	301	GTP	C4'-O4'-C1'	-5.17	104.27	109.77
3	A	302	APC	C1'-N9-C4	-4.99	118.01	126.64
2	A	301	GTP	C4'-O4'-C1'	-4.58	104.89	109.77
3	A	302	APC	PG-O3B-PB	-4.38	116.92	132.38
2	A	301	GTP	C1'-N9-C4	-4.29	119.22	126.64
2	B	301	GTP	N1-C2-N3	-4.11	116.57	121.79
2	B	301	GTP	C1'-N9-C4	-3.73	120.19	126.64
3	B	302	APC	C1'-N9-C4	-3.67	120.29	126.64
2	A	301	GTP	N1-C2-N3	-3.62	117.18	121.79
3	A	302	APC	N3-C2-N1	-3.60	125.72	128.86
3	B	302	APC	N3-C2-N1	-3.08	126.17	128.86
3	B	302	APC	O2A-PA-O1A	-3.07	99.82	110.09
3	B	302	APC	O2B-PB-O1B	-2.70	101.07	110.09
3	A	302	APC	O2B-PB-O1B	-2.56	101.53	110.09
3	B	302	APC	PG-O3B-PB	-2.40	123.89	132.38
3	A	302	APC	O3'-C3'-C2'	-2.29	104.50	111.83
3	B	302	APC	C4'-O4'-C1'	-2.04	107.59	109.77
2	B	301	GTP	O2A-PA-O1A	-2.03	101.78	112.28
2	B	301	GTP	O2B-PB-O1B	-2.00	101.91	112.28
3	A	302	APC	O1A-PA-C3A	2.01	113.95	108.97
3	B	302	APC	O4'-C4'-C3'	2.04	109.22	105.17
2	A	301	GTP	N2-C2-N3	2.58	123.43	120.26
3	A	302	APC	O1B-PB-C3A	3.25	117.00	108.97
3	B	302	APC	O2'-C2'-C3'	3.39	122.70	111.83
2	B	301	GTP	N2-C2-N1	3.43	121.49	117.84

Continued on next page...

Continued from previous page...

Mol	Chain	Res	Type	Atoms	Z	Observed(°)	Ideal(°)
3	A	302	APC	O2'-C2'-C3'	3.57	123.25	111.83
3	A	302	APC	O2'-C2'-C1'	4.02	124.19	111.61
3	B	302	APC	O2'-C2'-C1'	4.02	124.19	111.61
2	A	301	GTP	C2-N3-C4	6.02	122.19	115.16
2	B	301	GTP	C2-N3-C4	7.10	123.45	115.16

All (2) chirality outliers are listed below:

Mol	Chain	Res	Type	Atom
3	B	302	APC	C2'
3	A	302	APC	C2'

There are no torsion outliers.

There are no ring outliers.

1 monomer is involved in 1 short contact:

Mol	Chain	Res	Type	Clashes	Symm-Clashes
2	A	301	GTP	1	0

5.7 Other polymers [i](#)

There are no such residues in this entry.

5.8 Polymer linkage issues [i](#)

There are no chain breaks in this entry.

6 Fit of model and data ⓘ

6.1 Protein, DNA and RNA chains ⓘ

In the following table, the column labelled ‘#RSRZ> 2’ contains the number (and percentage) of RSRZ outliers, followed by percent RSRZ outliers for the chain as percentile scores relative to all X-ray entries and entries of similar resolution. The OWAB column contains the minimum, median, 95th percentile and maximum values of the occupancy-weighted average B-factor per residue. The column labelled ‘Q< 0.9’ lists the number of (and percentage) of residues with an average occupancy less than 0.9.

Mol	Chain	Analysed	<RSRZ>	#RSRZ>2	OWAB(Å ²)	Q<0.9
1	A	202/237 (85%)	0.37	15 (7%) 15 15	54, 69, 126, 181	0
1	B	200/237 (84%)	0.82	22 (11%) 6 5	53, 78, 148, 205	0
All	All	402/474 (84%)	0.59	37 (9%) 10 9	53, 73, 143, 205	0

All (37) RSRZ outliers are listed below:

Mol	Chain	Res	Type	RSRZ
1	B	31	ALA	15.9
1	B	198	ALA	9.5
1	B	33	ASP	9.0
1	B	197	ASN	8.4
1	B	194	TYR	8.4
1	B	32	PHE	8.4
1	A	197	ASN	8.3
1	A	200	THR	7.4
1	B	200	THR	4.9
1	A	196	ASN	4.8
1	A	199	GLU	4.1
1	B	199	GLU	4.1
1	B	196	ASN	3.8
1	A	30	GLU	3.7
1	A	228	ILE	3.6
1	A	32	PHE	3.3
1	A	198	ALA	3.2
1	A	29	ASP	3.2
1	A	194	TYR	3.1
1	B	96	ILE	2.9
1	B	204	ARG	2.8
1	B	94	LEU	2.7
1	B	89	LEU	2.5
1	B	97	SER	2.5

Continued on next page...

Continued from previous page...

Mol	Chain	Res	Type	RSRZ
1	B	35	LEU	2.5
1	B	34	THR	2.4
1	B	91	ARG	2.4
1	B	195	LYS	2.3
1	A	67	TYR	2.2
1	A	195	LYS	2.2
1	A	38	PHE	2.2
1	B	38	PHE	2.2
1	B	36	LEU	2.2
1	A	229	THR	2.1
1	A	201	GLU	2.1
1	B	85	LEU	2.0
1	B	228	ILE	2.0

6.2 Non-standard residues in protein, DNA, RNA chains [i](#)

There are no non-standard protein/DNA/RNA residues in this entry.

6.3 Carbohydrates [i](#)

There are no carbohydrates in this entry.

6.4 Ligands [i](#)

In the following table, the Atoms column lists the number of modelled atoms in the group and the number defined in the chemical component dictionary. LLDF column lists the quality of electron density of the group with respect to its neighbouring residues in protein, DNA or RNA chains. The B-factors column lists the minimum, median, 95th percentile and maximum values of B factors of atoms in the group. The column labelled 'Q< 0.9' lists the number of atoms with occupancy less than 0.9.

Mol	Type	Chain	Res	Atoms	RSCC	RSR	LLDF	B-factors(\AA^2)	Q<0.9
2	GTP	B	301	32/32	0.86	0.16	-0.14	99,141,185,187	0
3	APC	B	302	31/31	0.92	0.13	-0.61	83,104,131,145	0
3	APC	A	302	31/31	0.96	0.13	-0.84	53,62,79,88	0
2	GTP	A	301	32/32	0.95	0.12	-1.10	59,79,98,104	0
5	FE	A	304	1/1	0.97	0.10	-	80,80,80,80	0
4	MG	B	303	1/1	0.82	0.07	-	90,90,90,90	0
4	MG	A	303	1/1	0.84	0.07	-	55,55,55,55	0

6.5 Other polymers

There are no such residues in this entry.