



# Full wwPDB X-ray Structure Validation Report ⓘ

Jan 15, 2018 – 03:31 PM EST

PDB ID : 4EXA  
Title : Crystal structure of the PA4992, the putative aldo-keto reductase from *Pseudomonas aeruginosa*  
Authors : Sandalova, T.; Schnell, R.; Schneider, G.  
Deposited on : 2012-04-30  
Resolution : 2.80 Å(reported)

This is a Full wwPDB X-ray Structure Validation Report for a publicly released PDB entry.

We welcome your comments at [validation@mail.wwpdb.org](mailto:validation@mail.wwpdb.org)

A user guide is available at

<http://wwpdb.org/validation/2016/XrayValidationReportHelp>

with specific help available everywhere you see the ⓘ symbol.

---

The following versions of software and data (see [references ⓘ](#)) were used in the production of this report:

MolProbity : 4.02b-467  
Mogul : 1.7.2 (RC1), CSD as538be (2017)  
Xtriage (Phenix) : 1.9-1692  
EDS : rb-20030736  
Percentile statistics : 20161228.v01 (using entries in the PDB archive December 28th 2016)  
Refmac : 5.8.0135  
CCP4 : 6.5.0  
Ideal geometry (proteins) : Engh & Huber (2001)  
Ideal geometry (DNA, RNA) : Parkinson et al. (1996)  
Validation Pipeline (wwPDB-VP) : rb-20030736

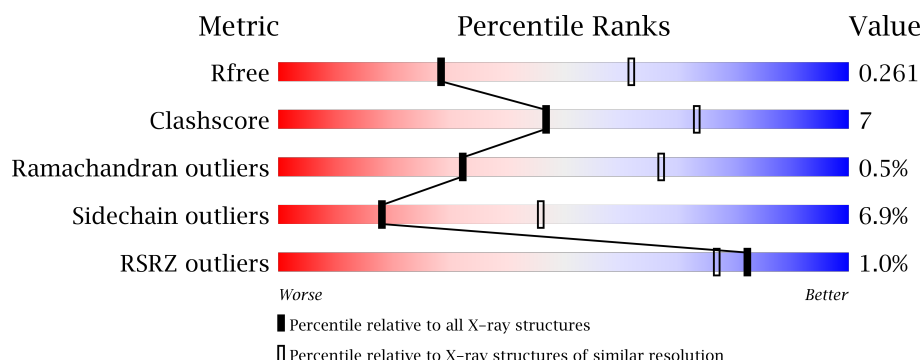
# 1 Overall quality at a glance ⓘ

The following experimental techniques were used to determine the structure:

## *X-RAY DIFFRACTION*

The reported resolution of this entry is 2.80 Å.

Percentile scores (ranging between 0-100) for global validation metrics of the entry are shown in the following graphic. The table shows the number of entries on which the scores are based.




Metric	Whole archive (#Entries)	Similar resolution (#Entries, resolution range(Å))
$R_{free}$	100719	2583 (2.80-2.80)
Clashscore	112137	3033 (2.80-2.80)
Ramachandran outliers	110173	2983 (2.80-2.80)
Sidechain outliers	110143	2985 (2.80-2.80)
RSRZ outliers	101464	2610 (2.80-2.80)

The table below summarises the geometric issues observed across the polymeric chains and their fit to the electron density. The red, orange, yellow and green segments on the lower bar indicate the fraction of residues that contain outliers for  $\geq 3$ , 2, 1 and 0 types of geometric quality criteria. A grey segment represents the fraction of residues that are not modelled. The numeric value for each fraction is indicated below the corresponding segment, with a dot representing fractions  $\leq 5\%$ . The upper red bar (where present) indicates the fraction of residues that have poor fit to the electron density. The numeric value is given above the bar.

Mol	Chain	Length	Quality of chain
1	A	292	<div> <div style="width: 100%; height: 10px; background: linear-gradient(to right, red 1%, green 74%, yellow 9%, orange 13%, grey 0%);"></div> <div style="display: flex; justify-content: space-between; width: 100%;"> <span>10%</span> <span>74%</span> <span>9%</span> <span>13%</span> </div> </div>
1	B	292	<div> <div style="width: 100%; height: 10px; background: linear-gradient(to right, red 1%, green 75%, yellow 10%, orange 14%, grey 0%);"></div> <div style="display: flex; justify-content: space-between; width: 100%;"> <span>10%</span> <span>75%</span> <span>10%</span> <span>14%</span> </div> </div>
1	C	292	<div> <div style="width: 100%; height: 10px; background: linear-gradient(to right, red 1%, green 73%, yellow 10%, orange 15%, grey 0%);"></div> <div style="display: flex; justify-content: space-between; width: 100%;"> <span>10%</span> <span>73%</span> <span>10%</span> <span>15%</span> </div> </div>
1	D	292	<div> <div style="width: 100%; height: 10px; background: linear-gradient(to right, red 1%, green 72%, yellow 12%, orange 12%, grey 0%);"></div> <div style="display: flex; justify-content: space-between; width: 100%;"> <span>10%</span> <span>72%</span> <span>12%</span> <span>12%</span> </div> </div>
1	E	292	<div> <div style="width: 100%; height: 10px; background: linear-gradient(to right, green 74%, yellow 10%, orange 12%, grey 0%);"></div> <div style="display: flex; justify-content: space-between; width: 100%;"> <span></span> <span>74%</span> <span>10%</span> <span>12%</span> </div> </div>

*Continued on next page...*

*Continued from previous page...*

Mol	Chain	Length	Quality of chain
1	F	292	 2% 74% 12% 11%

The following table lists non-polymeric compounds, carbohydrate monomers and non-standard residues in protein, DNA, RNA chains that are outliers for geometric or electron-density-fit criteria:

Mol	Type	Chain	Res	Chirality	Geometry	Clashes	Electron density
3	EPE	C	302	-	-	-	X

## 2 Entry composition

There are 4 unique types of molecules in this entry. The entry contains 11958 atoms, of which 0 are hydrogens and 0 are deuteriums.

In the tables below, the ZeroOcc column contains the number of atoms modelled with zero occupancy, the AltConf column contains the number of residues with at least one atom in alternate conformation and the Trace column contains the number of residues modelled with at most 2 atoms.

- Molecule 1 is a protein called Putative uncharacterized protein.

Mol	Chain	Residues	Atoms					ZeroOcc	AltConf	Trace
1	A	253	Total	C	N	O	S	0	0	0
			1935	1213	352	366	4			
1	B	252	Total	C	N	O	S	0	0	0
			1916	1200	350	362	4			
1	C	249	Total	C	N	O	S	0	0	0
			1891	1183	347	357	4			
1	D	256	Total	C	N	O	S	0	0	0
			1957	1227	355	371	4			
1	E	256	Total	C	N	O	S	0	0	0
			1956	1227	355	370	4			
1	F	259	Total	C	N	O	S	0	0	0
			1971	1235	360	372	4			

There are 132 discrepancies between the modelled and reference sequences:

Chain	Residue	Modelled	Actual	Comment	Reference
A	-21	MET	-	EXPRESSION TAG	UNP Q9HUH3
A	-20	HIS	-	EXPRESSION TAG	UNP Q9HUH3
A	-19	HIS	-	EXPRESSION TAG	UNP Q9HUH3
A	-18	HIS	-	EXPRESSION TAG	UNP Q9HUH3
A	-17	HIS	-	EXPRESSION TAG	UNP Q9HUH3
A	-16	HIS	-	EXPRESSION TAG	UNP Q9HUH3
A	-15	HIS	-	EXPRESSION TAG	UNP Q9HUH3
A	-14	SER	-	EXPRESSION TAG	UNP Q9HUH3
A	-13	SER	-	EXPRESSION TAG	UNP Q9HUH3
A	-12	GLY	-	EXPRESSION TAG	UNP Q9HUH3
A	-11	VAL	-	EXPRESSION TAG	UNP Q9HUH3
A	-10	ASP	-	EXPRESSION TAG	UNP Q9HUH3
A	-9	LEU	-	EXPRESSION TAG	UNP Q9HUH3
A	-8	GLY	-	EXPRESSION TAG	UNP Q9HUH3
A	-7	THR	-	EXPRESSION TAG	UNP Q9HUH3
A	-6	GLU	-	EXPRESSION TAG	UNP Q9HUH3
A	-5	ASN	-	EXPRESSION TAG	UNP Q9HUH3

*Continued on next page...*

*Continued from previous page...*

Chain	Residue	Modelled	Actual	Comment	Reference
A	-4	LEU	-	EXPRESSION TAG	UNP Q9HUH3
A	-3	TYR	-	EXPRESSION TAG	UNP Q9HUH3
A	-2	PHE	-	EXPRESSION TAG	UNP Q9HUH3
A	-1	GLN	-	EXPRESSION TAG	UNP Q9HUH3
A	0	SER	-	EXPRESSION TAG	UNP Q9HUH3
B	-21	MET	-	EXPRESSION TAG	UNP Q9HUH3
B	-20	HIS	-	EXPRESSION TAG	UNP Q9HUH3
B	-19	HIS	-	EXPRESSION TAG	UNP Q9HUH3
B	-18	HIS	-	EXPRESSION TAG	UNP Q9HUH3
B	-17	HIS	-	EXPRESSION TAG	UNP Q9HUH3
B	-16	HIS	-	EXPRESSION TAG	UNP Q9HUH3
B	-15	HIS	-	EXPRESSION TAG	UNP Q9HUH3
B	-14	SER	-	EXPRESSION TAG	UNP Q9HUH3
B	-13	SER	-	EXPRESSION TAG	UNP Q9HUH3
B	-12	GLY	-	EXPRESSION TAG	UNP Q9HUH3
B	-11	VAL	-	EXPRESSION TAG	UNP Q9HUH3
B	-10	ASP	-	EXPRESSION TAG	UNP Q9HUH3
B	-9	LEU	-	EXPRESSION TAG	UNP Q9HUH3
B	-8	GLY	-	EXPRESSION TAG	UNP Q9HUH3
B	-7	THR	-	EXPRESSION TAG	UNP Q9HUH3
B	-6	GLU	-	EXPRESSION TAG	UNP Q9HUH3
B	-5	ASN	-	EXPRESSION TAG	UNP Q9HUH3
B	-4	LEU	-	EXPRESSION TAG	UNP Q9HUH3
B	-3	TYR	-	EXPRESSION TAG	UNP Q9HUH3
B	-2	PHE	-	EXPRESSION TAG	UNP Q9HUH3
B	-1	GLN	-	EXPRESSION TAG	UNP Q9HUH3
B	0	SER	-	EXPRESSION TAG	UNP Q9HUH3
C	-21	MET	-	EXPRESSION TAG	UNP Q9HUH3
C	-20	HIS	-	EXPRESSION TAG	UNP Q9HUH3
C	-19	HIS	-	EXPRESSION TAG	UNP Q9HUH3
C	-18	HIS	-	EXPRESSION TAG	UNP Q9HUH3
C	-17	HIS	-	EXPRESSION TAG	UNP Q9HUH3
C	-16	HIS	-	EXPRESSION TAG	UNP Q9HUH3
C	-15	HIS	-	EXPRESSION TAG	UNP Q9HUH3
C	-14	SER	-	EXPRESSION TAG	UNP Q9HUH3
C	-13	SER	-	EXPRESSION TAG	UNP Q9HUH3
C	-12	GLY	-	EXPRESSION TAG	UNP Q9HUH3
C	-11	VAL	-	EXPRESSION TAG	UNP Q9HUH3
C	-10	ASP	-	EXPRESSION TAG	UNP Q9HUH3
C	-9	LEU	-	EXPRESSION TAG	UNP Q9HUH3
C	-8	GLY	-	EXPRESSION TAG	UNP Q9HUH3
C	-7	THR	-	EXPRESSION TAG	UNP Q9HUH3

*Continued on next page...*

*Continued from previous page...*

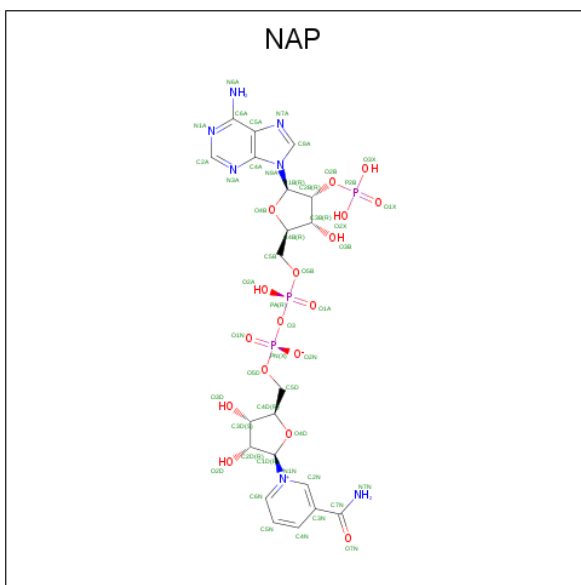
Chain	Residue	Modelled	Actual	Comment	Reference
C	-6	GLU	-	EXPRESSION TAG	UNP Q9HUH3
C	-5	ASN	-	EXPRESSION TAG	UNP Q9HUH3
C	-4	LEU	-	EXPRESSION TAG	UNP Q9HUH3
C	-3	TYR	-	EXPRESSION TAG	UNP Q9HUH3
C	-2	PHE	-	EXPRESSION TAG	UNP Q9HUH3
C	-1	GLN	-	EXPRESSION TAG	UNP Q9HUH3
C	0	SER	-	EXPRESSION TAG	UNP Q9HUH3
D	-21	MET	-	EXPRESSION TAG	UNP Q9HUH3
D	-20	HIS	-	EXPRESSION TAG	UNP Q9HUH3
D	-19	HIS	-	EXPRESSION TAG	UNP Q9HUH3
D	-18	HIS	-	EXPRESSION TAG	UNP Q9HUH3
D	-17	HIS	-	EXPRESSION TAG	UNP Q9HUH3
D	-16	HIS	-	EXPRESSION TAG	UNP Q9HUH3
D	-15	HIS	-	EXPRESSION TAG	UNP Q9HUH3
D	-14	SER	-	EXPRESSION TAG	UNP Q9HUH3
D	-13	SER	-	EXPRESSION TAG	UNP Q9HUH3
D	-12	GLY	-	EXPRESSION TAG	UNP Q9HUH3
D	-11	VAL	-	EXPRESSION TAG	UNP Q9HUH3
D	-10	ASP	-	EXPRESSION TAG	UNP Q9HUH3
D	-9	LEU	-	EXPRESSION TAG	UNP Q9HUH3
D	-8	GLY	-	EXPRESSION TAG	UNP Q9HUH3
D	-7	THR	-	EXPRESSION TAG	UNP Q9HUH3
D	-6	GLU	-	EXPRESSION TAG	UNP Q9HUH3
D	-5	ASN	-	EXPRESSION TAG	UNP Q9HUH3
D	-4	LEU	-	EXPRESSION TAG	UNP Q9HUH3
D	-3	TYR	-	EXPRESSION TAG	UNP Q9HUH3
D	-2	PHE	-	EXPRESSION TAG	UNP Q9HUH3
D	-1	GLN	-	EXPRESSION TAG	UNP Q9HUH3
D	0	SER	-	EXPRESSION TAG	UNP Q9HUH3
E	-21	MET	-	EXPRESSION TAG	UNP Q9HUH3
E	-20	HIS	-	EXPRESSION TAG	UNP Q9HUH3
E	-19	HIS	-	EXPRESSION TAG	UNP Q9HUH3
E	-18	HIS	-	EXPRESSION TAG	UNP Q9HUH3
E	-17	HIS	-	EXPRESSION TAG	UNP Q9HUH3
E	-16	HIS	-	EXPRESSION TAG	UNP Q9HUH3
E	-15	HIS	-	EXPRESSION TAG	UNP Q9HUH3
E	-14	SER	-	EXPRESSION TAG	UNP Q9HUH3
E	-13	SER	-	EXPRESSION TAG	UNP Q9HUH3
E	-12	GLY	-	EXPRESSION TAG	UNP Q9HUH3
E	-11	VAL	-	EXPRESSION TAG	UNP Q9HUH3
E	-10	ASP	-	EXPRESSION TAG	UNP Q9HUH3
E	-9	LEU	-	EXPRESSION TAG	UNP Q9HUH3

*Continued on next page...*

*Continued from previous page...*

Chain	Residue	Modelled	Actual	Comment	Reference
E	-8	GLY	-	EXPRESSION TAG	UNP Q9HUH3
E	-7	THR	-	EXPRESSION TAG	UNP Q9HUH3
E	-6	GLU	-	EXPRESSION TAG	UNP Q9HUH3
E	-5	ASN	-	EXPRESSION TAG	UNP Q9HUH3
E	-4	LEU	-	EXPRESSION TAG	UNP Q9HUH3
E	-3	TYR	-	EXPRESSION TAG	UNP Q9HUH3
E	-2	PHE	-	EXPRESSION TAG	UNP Q9HUH3
E	-1	GLN	-	EXPRESSION TAG	UNP Q9HUH3
E	0	SER	-	EXPRESSION TAG	UNP Q9HUH3
F	-21	MET	-	EXPRESSION TAG	UNP Q9HUH3
F	-20	HIS	-	EXPRESSION TAG	UNP Q9HUH3
F	-19	HIS	-	EXPRESSION TAG	UNP Q9HUH3
F	-18	HIS	-	EXPRESSION TAG	UNP Q9HUH3
F	-17	HIS	-	EXPRESSION TAG	UNP Q9HUH3
F	-16	HIS	-	EXPRESSION TAG	UNP Q9HUH3
F	-15	HIS	-	EXPRESSION TAG	UNP Q9HUH3
F	-14	SER	-	EXPRESSION TAG	UNP Q9HUH3
F	-13	SER	-	EXPRESSION TAG	UNP Q9HUH3
F	-12	GLY	-	EXPRESSION TAG	UNP Q9HUH3
F	-11	VAL	-	EXPRESSION TAG	UNP Q9HUH3
F	-10	ASP	-	EXPRESSION TAG	UNP Q9HUH3
F	-9	LEU	-	EXPRESSION TAG	UNP Q9HUH3
F	-8	GLY	-	EXPRESSION TAG	UNP Q9HUH3
F	-7	THR	-	EXPRESSION TAG	UNP Q9HUH3
F	-6	GLU	-	EXPRESSION TAG	UNP Q9HUH3
F	-5	ASN	-	EXPRESSION TAG	UNP Q9HUH3
F	-4	LEU	-	EXPRESSION TAG	UNP Q9HUH3
F	-3	TYR	-	EXPRESSION TAG	UNP Q9HUH3
F	-2	PHE	-	EXPRESSION TAG	UNP Q9HUH3
F	-1	GLN	-	EXPRESSION TAG	UNP Q9HUH3
F	0	SER	-	EXPRESSION TAG	UNP Q9HUH3

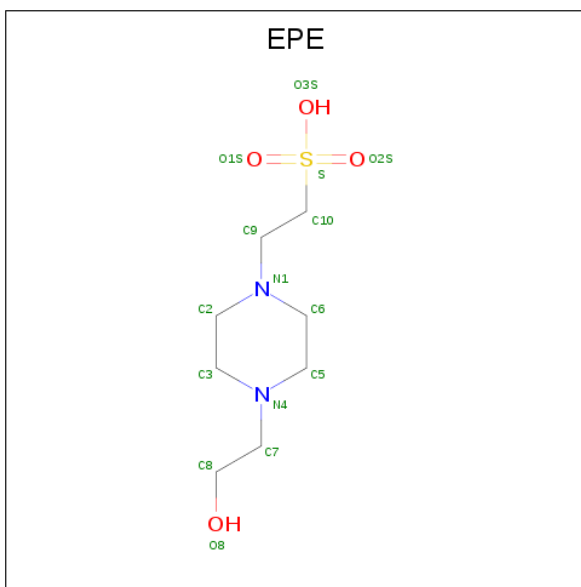
- Molecule 2 is NADP NICOTINAMIDE-ADENINE-DINUCLEOTIDE PHOSPHATE (three-letter code: NAP) (formula: C<sub>21</sub>H<sub>28</sub>N<sub>7</sub>O<sub>17</sub>P<sub>3</sub>).



Mol	Chain	Residues	Atoms					ZeroOcc	AltConf
2	A	1	Total 31	C 10	N 5	O 13	P 3	0	0
2	B	1	Total 31	C 10	N 5	O 13	P 3	0	0
2	C	1	Total 31	C 10	N 5	O 13	P 3	0	0
2	D	1	Total 31	C 10	N 5	O 13	P 3	0	0
2	E	1	Total 31	C 10	N 5	O 13	P 3	0	0
2	F	1	Total 31	C 10	N 5	O 13	P 3	0	0

- Molecule 3 is 4-(2-HYDROXYETHYL)-1-PIPERAZINE ETHANESULFONIC ACID (three-letter code: EPE) (formula:  $C_8H_{18}N_2O_4S$ ).





Mol	Chain	Residues	Atoms					ZeroOcc	AltConf
3	B	1	Total	C	N	O	S	0	0
			15	8	2	4	1		
3	C	1	Total	C	N	O	S	0	0
			15	8	2	4	1		

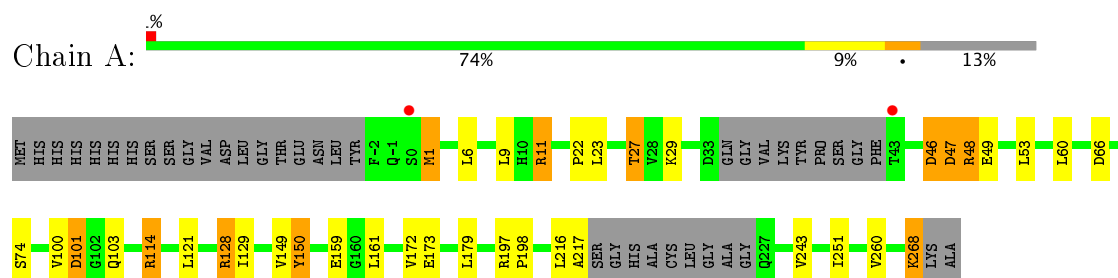
- Molecule 4 is water.

Mol	Chain	Residues	Atoms		ZeroOcc	AltConf
4	A	15	Total	O	0	0
			15	15		
4	B	18	Total	O	0	0
			18	18		
4	C	21	Total	O	0	0
			21	21		
4	D	25	Total	O	0	0
			25	25		
4	E	24	Total	O	0	0
			24	24		
4	F	13	Total	O	0	0
			13	13		

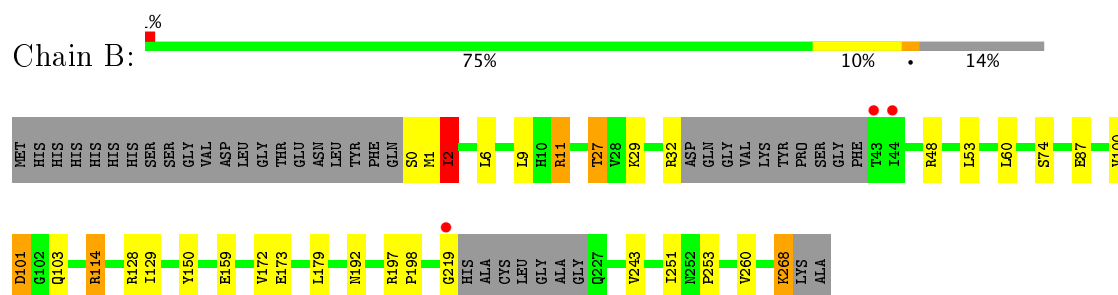
### 3 Residue-property plots [i](#)

These plots are drawn for all protein, RNA and DNA chains in the entry. The first graphic for a chain summarises the proportions of the various outlier classes displayed in the second graphic. The second graphic shows the sequence view annotated by issues in geometry and electron density. Residues are color-coded according to the number of geometric quality criteria for which they contain at least one outlier: green = 0, yellow = 1, orange = 2 and red = 3 or more. A red dot above a residue indicates a poor fit to the electron density ( $RSRZ > 2$ ). Stretches of 2 or more consecutive residues without any outlier are shown as a green connector. Residues present in the sample, but not in the model, are shown in grey.

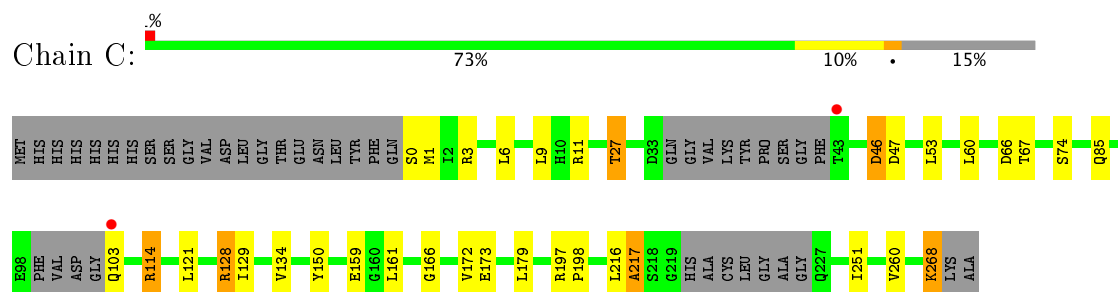
- Molecule 1: Putative uncharacterized protein



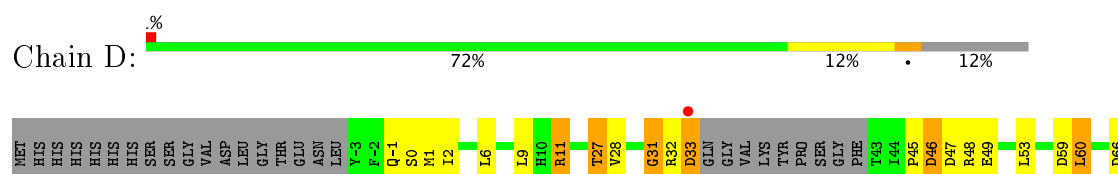
- Molecule 1: Putative uncharacterized protein

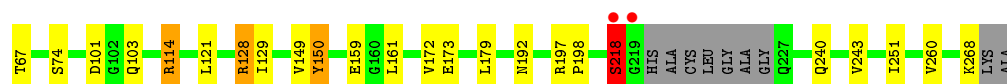


- Molecule 1: Putative uncharacterized protein

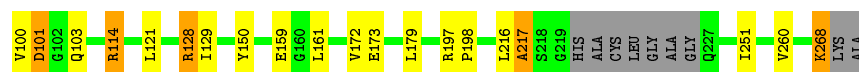


- Molecule 1: Putative uncharacterized protein

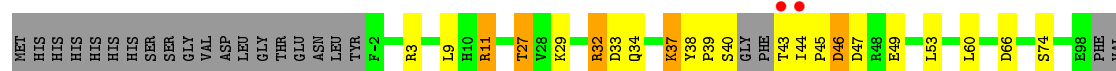
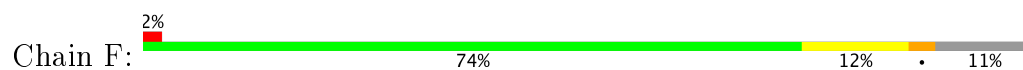




- Molecule 1: Putative uncharacterized protein



- Molecule 1: Putative uncharacterized protein



## 4 Data and refinement statistics

Property	Value	Source
Space group	P 21 21 21	Depositor
Cell constants a, b, c, $\alpha$ , $\beta$ , $\gamma$	94.17Å 120.28Å 151.11Å 90.00° 90.00° 90.00°	Depositor
Resolution (Å)	94.11 – 2.80 94.11 – 2.80	Depositor EDS
% Data completeness (in resolution range)	96.6 (94.11-2.80) 96.6 (94.11-2.80)	Depositor EDS
$R_{merge}$	0.13	Depositor
$R_{sym}$	0.13	Depositor
$\langle I/\sigma(I) \rangle$ <sup>1</sup>	2.53 (at 2.82Å)	Xtriage
Refinement program	REFMAC 5.5.0109	Depositor
R, $R_{free}$	0.227 , 0.272 0.224 , 0.261	Depositor DCC
$R_{free}$ test set	2102 reflections (5.33%)	DCC
Wilson B-factor (Å <sup>2</sup> )	38.5	Xtriage
Anisotropy	0.035	Xtriage
Bulk solvent $k_{sol}$ (e/Å <sup>3</sup> ), $B_{sol}$ (Å <sup>2</sup> )	0.33 , 31.4	EDS
L-test for twinning <sup>2</sup>	$\langle  L  \rangle = 0.48$ , $\langle L^2 \rangle = 0.31$	Xtriage
Estimated twinning fraction	No twinning to report.	Xtriage
$F_o, F_c$ correlation	0.90	EDS
Total number of atoms	11958	wwPDB-VP
Average B, all atoms (Å <sup>2</sup> )	27.0	wwPDB-VP

Xtriage's analysis on translational NCS is as follows: *The largest off-origin peak in the Patterson function is 2.90% of the height of the origin peak. No significant pseudotranslation is detected.*

<sup>1</sup>Intensities estimated from amplitudes.

<sup>2</sup>Theoretical values of  $\langle |L| \rangle$ ,  $\langle L^2 \rangle$  for acentric reflections are 0.5, 0.333 respectively for untwinned datasets, and 0.375, 0.2 for perfectly twinned datasets.

## 5 Model quality

### 5.1 Standard geometry

Bond lengths and bond angles in the following residue types are not validated in this section: NAP, EPE

The Z score for a bond length (or angle) is the number of standard deviations the observed value is removed from the expected value. A bond length (or angle) with  $|Z| > 5$  is considered an outlier worth inspection. RMSZ is the root-mean-square of all Z scores of the bond lengths (or angles).

Mol	Chain	Bond lengths		Bond angles	
		RMSZ	$\# Z  > 5$	RMSZ	$\# Z  > 5$
1	A	0.62	0/1964	0.70	1/2657 (0.0%)
1	B	0.65	0/1944	0.70	0/2630
1	C	0.64	0/1917	0.72	3/2592 (0.1%)
1	D	0.64	0/1987	0.80	5/2688 (0.2%)
1	E	0.70	0/1986	0.73	3/2687 (0.1%)
1	F	0.59	0/2000	0.69	1/2704 (0.0%)
All	All	0.64	0/11798	0.72	13/15958 (0.1%)

Chiral center outliers are detected by calculating the chiral volume of a chiral center and verifying if the center is modelled as a planar moiety or with the opposite hand. A planarity outlier is detected by checking planarity of atoms in a peptide group, atoms in a mainchain group or atoms of a sidechain that are expected to be planar.

Mol	Chain	#Chirality outliers	#Planarity outliers
1	D	0	3
1	E	0	1
1	F	0	2
All	All	0	6

There are no bond length outliers.

All (13) bond angle outliers are listed below:

Mol	Chain	Res	Type	Atoms	Z	Observed(°)	Ideal(°)
1	D	218	SER	O-C-N	-11.75	103.22	123.20
1	D	218	SER	C-N-CA	10.81	145.01	122.30
1	C	217	ALA	CB-CA-C	8.08	122.21	110.10
1	E	217	ALA	CB-CA-C	7.83	121.84	110.10
1	D	31	GLY	N-CA-C	-6.56	96.69	113.10
1	D	46	ASP	CB-CA-C	-6.54	97.31	110.40
1	A	46	ASP	CB-CA-C	-6.37	97.66	110.40

*Continued on next page...*

*Continued from previous page...*

Mol	Chain	Res	Type	Atoms	Z	Observed(°)	Ideal(°)
1	D	218	SER	CA-C-N	6.07	128.34	116.20
1	C	46	ASP	CB-CA-C	-5.93	98.53	110.40
1	F	46	ASP	CB-CA-C	-5.57	99.27	110.40
1	C	217	ALA	N-CA-C	-5.47	96.23	111.00
1	E	46	ASP	CB-CA-C	-5.44	99.53	110.40
1	E	217	ALA	N-CA-C	-5.29	96.71	111.00

There are no chirality outliers.

All (6) planarity outliers are listed below:

Mol	Chain	Res	Type	Group
1	D	218	SER	Mainchain,Peptide
1	D	45	PRO	Peptide
1	E	45	PRO	Peptide
1	F	217	ALA	Peptide
1	F	45	PRO	Peptide

## 5.2 Too-close contacts ⓘ

In the following table, the Non-H and H(model) columns list the number of non-hydrogen atoms and hydrogen atoms in the chain respectively. The H(added) column lists the number of hydrogen atoms added and optimized by MolProbity. The Clashes column lists the number of clashes within the asymmetric unit, whereas Symm-Clashes lists symmetry related clashes.

Mol	Chain	Non-H	H(model)	H(added)	Clashes	Symm-Clashes
1	A	1935	0	1951	24	0
1	B	1916	0	1935	22	0
1	C	1891	0	1911	21	0
1	D	1957	0	1968	31	0
1	E	1956	0	1968	36	0
1	F	1971	0	1987	36	0
2	A	31	0	11	1	0
2	B	31	0	11	1	0
2	C	31	0	11	2	0
2	D	31	0	11	0	0
2	E	31	0	11	0	0
2	F	31	0	11	0	0
3	B	15	0	17	0	0
3	C	15	0	17	0	0
4	A	15	0	0	0	0
4	B	18	0	0	2	0

*Continued on next page...*

*Continued from previous page...*

Mol	Chain	Non-H	H(model)	H(added)	Clashes	Symm-Clashes
4	C	21	0	0	1	0
4	D	25	0	0	1	0
4	E	24	0	0	1	0
4	F	13	0	0	1	0
All	All	11958	0	11820	167	0

The all-atom clashscore is defined as the number of clashes found per 1000 atoms (including hydrogen atoms). The all-atom clashscore for this structure is 7.

All (167) close contacts within the same asymmetric unit are listed below, sorted by their clash magnitude.

Atom-1	Atom-2	Interatomic distance (Å)	Clash overlap (Å)
1:F:32:ARG:C	1:F:44:ILE:HD11	1.78	1.04
1:E:27:THR:HG23	1:E:74:SER:OG	1.60	1.00
1:F:32:ARG:O	1:F:44:ILE:HD13	1.65	0.96
1:F:32:ARG:C	1:F:44:ILE:CD1	2.35	0.94
1:D:27:THR:HG23	1:D:74:SER:OG	1.67	0.92
1:B:27:THR:HG23	1:B:74:SER:OG	1.74	0.88
1:F:32:ARG:O	1:F:44:ILE:CD1	2.23	0.86
1:C:27:THR:HG23	1:C:74:SER:OG	1.74	0.86
1:E:100:VAL:O	1:E:100:VAL:HG12	1.78	0.84
1:B:197:ARG:HD3	4:B:413:HOH:O	1.79	0.82
1:A:27:THR:HG23	1:A:74:SER:OG	1.79	0.81
1:E:-3:TYR:HD1	1:E:-2:PHE:N	1.79	0.81
1:E:-3:TYR:HD1	1:E:-2:PHE:H	1.26	0.80
1:F:33:ASP:N	1:F:44:ILE:HD11	1.95	0.80
1:D:192:ASN:ND2	1:D:218:SER:HA	1.97	0.80
1:F:39:PRO:O	1:F:40:SER:CB	2.32	0.76
1:E:-3:TYR:CD1	1:E:-2:PHE:N	2.54	0.74
1:F:40:SER:C	1:F:43:THR:HA	2.09	0.73
1:E:27:THR:CG2	1:E:74:SER:OG	2.38	0.72
1:E:2:ILE:HD13	1:E:60:LEU:HD12	1.72	0.71
1:A:53:LEU:HD21	1:A:251:ILE:HA	1.73	0.70
1:E:2:ILE:CD1	1:E:5:THR:HG22	2.21	0.69
1:D:192:ASN:HD21	1:D:218:SER:HA	1.56	0.69
1:F:53:LEU:HD21	1:F:251:ILE:HA	1.75	0.68
1:E:2:ILE:HD13	1:E:60:LEU:CD1	2.25	0.67
1:D:27:THR:CG2	1:D:74:SER:OG	2.42	0.67
1:D:27:THR:HG23	1:D:74:SER:HG	1.57	0.67
1:D:53:LEU:HD21	1:D:251:ILE:HA	1.77	0.66
1:E:2:ILE:HD11	1:E:5:THR:CG2	2.26	0.66

*Continued on next page...*

*Continued from previous page...*

Atom-1	Atom-2	Interatomic distance (Å)	Clash overlap (Å)
1:F:27:THR:HG23	1:F:74:SER:OG	1.96	0.65
1:D:59:ASP:OD2	1:E:-2:PHE:CE1	2.50	0.65
1:E:53:LEU:HD21	1:E:251:ILE:HA	1.80	0.64
1:E:100:VAL:CG1	1:E:100:VAL:O	2.46	0.64
1:B:87:GLU:HB2	4:B:402:HOH:O	1.98	0.63
1:B:27:THR:CG2	1:B:74:SER:OG	2.46	0.61
2:C:301:NAP:H51A	2:C:301:NAP:PN	2.40	0.61
1:C:53:LEU:HD21	1:C:251:ILE:HA	1.82	0.61
1:E:2:ILE:CD1	1:E:5:THR:CG2	2.79	0.60
1:F:32:ARG:C	1:F:44:ILE:HD13	2.15	0.60
1:D:59:ASP:OD2	1:E:-2:PHE:CZ	2.55	0.60
1:C:0:SER:OG	1:C:1:MET:N	2.34	0.59
1:D:121:LEU:HD21	1:D:128:ARG:HA	1.83	0.59
1:A:100:VAL:HG12	1:A:100:VAL:O	2.02	0.59
1:B:192:ASN:HD21	1:B:219:GLY:H	1.49	0.58
1:C:46:ASP:O	1:C:47:ASP:C	2.41	0.58
1:F:121:LEU:HD21	1:F:128:ARG:HA	1.86	0.58
1:C:114:ARG:NH2	1:C:159:GLU:OE2	2.37	0.58
1:B:1:MET:O	1:B:2:ILE:HG23	2.03	0.58
1:C:27:THR:CG2	1:C:74:SER:OG	2.51	0.58
1:D:121:LEU:CD2	1:D:128:ARG:HA	2.34	0.57
1:F:121:LEU:CD2	1:F:128:ARG:HA	2.35	0.57
1:C:6:LEU:HG	1:C:260:VAL:HG13	1.87	0.57
1:A:121:LEU:CD2	1:A:128:ARG:HA	2.35	0.56
1:A:121:LEU:HD21	1:A:128:ARG:HA	1.87	0.56
1:B:27:THR:O	1:B:27:THR:HG23	2.06	0.56
2:C:301:NAP:O2N	2:C:301:NAP:H51A	2.06	0.56
1:C:121:LEU:HD21	1:C:128:ARG:HA	1.88	0.56
1:A:27:THR:CG2	1:A:74:SER:OG	2.51	0.56
1:E:6:LEU:HG	1:E:260:VAL:HG13	1.87	0.56
1:A:29:LYS:NZ	2:A:301:NAP:O3B	2.39	0.55
1:F:40:SER:O	1:F:43:THR:HG23	2.06	0.55
1:B:100:VAL:O	1:B:101:ASP:HB2	2.06	0.55
1:A:27:THR:HG23	1:A:27:THR:O	2.07	0.53
1:A:46:ASP:O	1:A:47:ASP:C	2.46	0.53
1:A:46:ASP:O	1:A:48:ARG:N	2.41	0.53
1:E:27:THR:HB	1:E:66:ASP:O	2.10	0.52
1:F:32:ARG:HB2	1:F:44:ILE:HG12	1.91	0.52
1:A:46:ASP:O	1:A:49:GLU:N	2.42	0.52
1:C:121:LEU:CD2	1:C:128:ARG:HA	2.39	0.52
1:E:216:LEU:O	1:E:217:ALA:HB2	2.09	0.52

*Continued on next page...*



*Continued from previous page...*

Atom-1	Atom-2	Interatomic distance (Å)	Clash overlap (Å)
1:E:121:LEU:CD2	1:E:128:ARG:HA	2.39	0.52
1:F:27:THR:HG23	1:F:27:THR:O	2.10	0.52
1:D:27:THR:HG23	1:D:27:THR:O	2.09	0.51
1:B:6:LEU:HG	1:B:260:VAL:HG13	1.92	0.51
1:F:40:SER:HA	1:F:43:THR:HA	1.93	0.51
1:D:28:VAL:O	1:D:31:GLY:O	2.29	0.51
1:F:114:ARG:NH2	1:F:159:GLU:OE2	2.44	0.51
1:A:216:LEU:O	1:A:217:ALA:HB2	2.11	0.50
1:F:40:SER:CA	1:F:43:THR:HA	2.41	0.50
1:C:3:ARG:NH2	4:C:413:HOH:O	2.44	0.50
1:A:11:ARG:NH1	1:A:243:VAL:O	2.45	0.49
1:B:114:ARG:NH2	1:B:159:GLU:OE2	2.45	0.49
1:D:128:ARG:HG2	1:D:129:ILE:N	2.27	0.49
1:C:128:ARG:HG2	1:C:129:ILE:N	2.24	0.49
1:D:27:THR:HG21	1:D:67:THR:HB	1.96	0.48
1:E:2:ILE:O	1:E:2:ILE:HG13	2.13	0.48
1:F:27:THR:HB	1:F:66:ASP:O	2.13	0.48
1:B:1:MET:C	1:B:2:ILE:HG23	2.33	0.47
1:D:46:ASP:O	1:D:48:ARG:N	2.47	0.47
1:E:46:ASP:O	1:E:47:ASP:C	2.53	0.47
1:B:0:SER:OG	1:B:0:SER:O	2.29	0.47
1:D:6:LEU:HG	1:D:260:VAL:HG13	1.96	0.47
1:D:114:ARG:NH2	1:D:159:GLU:OE2	2.46	0.47
1:B:1:MET:O	1:B:2:ILE:CG2	2.62	0.47
1:C:27:THR:HG21	1:C:67:THR:HB	1.96	0.47
1:F:34:GLN:O	1:F:37:LYS:HB2	2.14	0.47
1:F:38:TYR:HA	1:F:39:PRO:C	2.34	0.47
1:A:128:ARG:HG2	1:A:129:ILE:N	2.28	0.47
1:D:128:ARG:HB2	1:D:161:LEU:O	2.15	0.47
1:A:128:ARG:HB2	1:A:161:LEU:O	2.15	0.47
1:E:121:LEU:HD21	1:E:128:ARG:HA	1.96	0.47
1:F:128:ARG:HG2	1:F:129:ILE:N	2.26	0.47
1:F:3:ARG:HH11	1:F:3:ARG:CG	2.27	0.46
1:F:40:SER:HA	1:F:43:THR:CA	2.44	0.46
1:B:53:LEU:HD21	1:B:251:ILE:HA	1.98	0.46
1:B:197:ARG:N	1:B:198:PRO:CD	2.79	0.46
1:D:27:THR:HB	1:D:66:ASP:O	2.16	0.46
1:D:46:ASP:O	1:D:47:ASP:C	2.54	0.46
1:F:149:VAL:HG13	1:F:150:TYR:N	2.31	0.46
1:E:128:ARG:HG2	1:E:129:ILE:N	2.23	0.46
1:F:33:ASP:HA	1:F:44:ILE:CD1	2.46	0.46

*Continued on next page...*

*Continued from previous page...*

Atom-1	Atom-2	Interatomic distance (Å)	Clash overlap (Å)
1:A:27:THR:HB	1:A:66:ASP:O	2.16	0.45
1:E:197:ARG:HD3	4:E:424:HOH:O	2.15	0.45
1:E:27:THR:HG23	1:E:27:THR:O	2.16	0.45
1:D:59:ASP:OD2	1:E:-2:PHE:HE1	1.98	0.45
1:E:27:THR:HG22	1:E:67:THR:HA	1.99	0.45
1:D:197:ARG:N	1:D:198:PRO:CD	2.79	0.45
1:D:149:VAL:HG13	1:D:150:TYR:N	2.32	0.45
1:D:46:ASP:O	1:D:49:GLU:N	2.50	0.45
1:C:128:ARG:HB2	1:C:161:LEU:O	2.17	0.45
1:A:1:MET:HB3	1:B:253:PRO:HB2	1.99	0.45
1:A:22:PRO:O	1:A:23:LEU:HD23	2.17	0.45
1:A:6:LEU:HG	1:A:260:VAL:HG13	1.97	0.45
1:C:27:THR:HG22	1:C:67:THR:HA	1.99	0.45
1:E:100:VAL:O	1:E:101:ASP:HB2	2.17	0.44
1:A:149:VAL:HG13	1:A:150:TYR:N	2.32	0.44
1:D:2:ILE:HB	1:D:60:LEU:HD11	1.99	0.44
1:C:134:VAL:HG23	1:C:166:GLY:O	2.18	0.44
1:F:197:ARG:N	1:F:198:PRO:CD	2.81	0.44
1:F:46:ASP:O	1:F:47:ASP:C	2.56	0.44
1:E:27:THR:HG21	1:E:67:THR:HB	2.00	0.44
1:E:114:ARG:NH2	1:E:159:GLU:OE2	2.51	0.43
1:E:268:LYS:HB3	1:E:268:LYS:HE3	1.86	0.43
1:A:197:ARG:N	1:A:198:PRO:CD	2.81	0.43
1:D:-1:GLN:C	1:D:1:MET:H	2.21	0.43
1:A:114:ARG:NH2	1:A:159:GLU:OE2	2.51	0.43
1:E:197:ARG:N	1:E:198:PRO:CD	2.80	0.43
1:F:27:THR:CG2	1:F:74:SER:OG	2.64	0.43
1:B:29:LYS:NZ	2:B:301:NAP:O3B	2.51	0.43
1:F:33:ASP:CA	1:F:44:ILE:HD11	2.49	0.43
1:A:268:LYS:HE3	1:A:268:LYS:HB3	1.86	0.42
1:F:53:LEU:CD2	1:F:251:ILE:HA	2.47	0.42
1:B:48:ARG:HA	1:B:48:ARG:HD2	1.82	0.42
1:C:27:THR:HB	1:C:66:ASP:O	2.19	0.42
1:B:192:ASN:ND2	1:B:219:GLY:H	2.15	0.42
1:D:197:ARG:HE	1:D:240:GLN:HE22	1.68	0.42
1:C:197:ARG:N	1:C:198:PRO:CD	2.82	0.42
1:C:268:LYS:HB3	1:C:268:LYS:HE3	1.85	0.42
1:E:128:ARG:HB2	1:E:161:LEU:O	2.19	0.41
1:F:46:ASP:O	1:F:49:GLU:N	2.53	0.41
1:C:85:GLN:HB3	1:E:73:ARG:HH11	1.85	0.41
1:B:11:ARG:NH1	1:B:243:VAL:O	2.54	0.41

*Continued on next page...*

Continued from previous page...

Atom-1	Atom-2	Interatomic distance (Å)	Clash overlap (Å)
1:C:216:LEU:O	1:C:217:ALA:HB2	2.21	0.41
1:D:11:ARG:NH1	1:D:243:VAL:O	2.54	0.41
1:F:128:ARG:HB2	1:F:161:LEU:O	2.21	0.41
1:F:227:GLN:N	4:F:407:HOH:O	2.53	0.41
1:D:27:THR:HG22	1:D:67:THR:HA	2.02	0.41
1:F:11:ARG:NH1	1:F:243:VAL:O	2.53	0.41
1:F:29:LYS:HA	1:F:32:ARG:HD3	2.03	0.41
1:E:46:ASP:O	1:E:48:ARG:N	2.54	0.41
1:C:27:THR:HG23	1:C:27:THR:O	2.20	0.40
1:D:33:ASP:OD2	1:D:33:ASP:C	2.60	0.40
1:D:48:ARG:CZ	4:D:425:HOH:O	2.69	0.40
1:A:100:VAL:O	1:A:101:ASP:CB	2.70	0.40
1:B:128:ARG:HG2	1:B:129:ILE:N	2.27	0.40
1:B:268:LYS:HB3	1:B:268:LYS:HE3	1.88	0.40
1:E:46:ASP:O	1:E:49:GLU:N	2.54	0.40

There are no symmetry-related clashes.

## 5.3 Torsion angles [i](#)

### 5.3.1 Protein backbone [i](#)

In the following table, the Percentiles column shows the percent Ramachandran outliers of the chain as a percentile score with respect to all X-ray entries followed by that with respect to entries of similar resolution.

The Analysed column shows the number of residues for which the backbone conformation was analysed, and the total number of residues.

Mol	Chain	Analysed	Favoured	Allowed	Outliers	Percentiles	
1	A	247/292 (85%)	240 (97%)	5 (2%)	2 (1%)	22	55
1	B	246/292 (84%)	234 (95%)	10 (4%)	2 (1%)	22	55
1	C	241/292 (82%)	235 (98%)	6 (2%)	0	100	100
1	D	250/292 (86%)	241 (96%)	7 (3%)	2 (1%)	22	55
1	E	250/292 (86%)	242 (97%)	7 (3%)	1 (0%)	38	72
1	F	251/292 (86%)	241 (96%)	10 (4%)	0	100	100
All	All	1485/1752 (85%)	1433 (96%)	45 (3%)	7 (0%)	32	67

All (7) Ramachandran outliers are listed below:

Mol	Chain	Res	Type
1	A	101	ASP
1	E	101	ASP
1	B	2	ILE
1	B	101	ASP
1	A	47	ASP
1	D	0	SER
1	D	101	ASP

### 5.3.2 Protein sidechains ⓘ

In the following table, the Percentiles column shows the percent sidechain outliers of the chain as a percentile score with respect to all X-ray entries followed by that with respect to entries of similar resolution.

The Analysed column shows the number of residues for which the sidechain conformation was analysed, and the total number of residues.

Mol	Chain	Analysed	Rotameric	Outliers	Percentiles	
1	A	201/230 (87%)	187 (93%)	14 (7%)	18	45
1	B	198/230 (86%)	185 (93%)	13 (7%)	19	49
1	C	195/230 (85%)	183 (94%)	12 (6%)	21	52
1	D	203/230 (88%)	189 (93%)	14 (7%)	18	46
1	E	203/230 (88%)	188 (93%)	15 (7%)	16	42
1	F	204/230 (89%)	189 (93%)	15 (7%)	16	42
All	All	1204/1380 (87%)	1121 (93%)	83 (7%)	18	46

All (83) residues with a non-rotameric sidechain are listed below:

Mol	Chain	Res	Type
1	A	1	MET
1	A	9	LEU
1	A	11	ARG
1	A	27	THR
1	A	48	ARG
1	A	60	LEU
1	A	103	GLN
1	A	114	ARG
1	A	128	ARG
1	A	150	TYR
1	A	172	VAL
1	A	173	GLU

*Continued on next page...*

*Continued from previous page...*

Mol	Chain	Res	Type
1	A	179	LEU
1	A	268	LYS
1	B	2	ILE
1	B	9	LEU
1	B	11	ARG
1	B	27	THR
1	B	32	ARG
1	B	60	LEU
1	B	103	GLN
1	B	114	ARG
1	B	150	TYR
1	B	172	VAL
1	B	173	GLU
1	B	179	LEU
1	B	268	LYS
1	C	9	LEU
1	C	11	ARG
1	C	27	THR
1	C	60	LEU
1	C	103	GLN
1	C	114	ARG
1	C	128	ARG
1	C	150	TYR
1	C	172	VAL
1	C	173	GLU
1	C	179	LEU
1	C	268	LYS
1	D	9	LEU
1	D	11	ARG
1	D	27	THR
1	D	32	ARG
1	D	33	ASP
1	D	60	LEU
1	D	103	GLN
1	D	114	ARG
1	D	128	ARG
1	D	150	TYR
1	D	172	VAL
1	D	173	GLU
1	D	179	LEU
1	D	268	LYS
1	E	-3	TYR

*Continued on next page...*

*Continued from previous page...*

Mol	Chain	Res	Type
1	E	2	ILE
1	E	9	LEU
1	E	11	ARG
1	E	27	THR
1	E	60	LEU
1	E	73	ARG
1	E	103	GLN
1	E	114	ARG
1	E	128	ARG
1	E	150	TYR
1	E	172	VAL
1	E	173	GLU
1	E	179	LEU
1	E	268	LYS
1	F	9	LEU
1	F	11	ARG
1	F	27	THR
1	F	32	ARG
1	F	37	LYS
1	F	60	LEU
1	F	103	GLN
1	F	114	ARG
1	F	128	ARG
1	F	150	TYR
1	F	172	VAL
1	F	173	GLU
1	F	179	LEU
1	F	218	SER
1	F	268	LYS

Some sidechains can be flipped to improve hydrogen bonding and reduce clashes. All (5) such sidechains are listed below:

Mol	Chain	Res	Type
1	A	-1	GLN
1	A	85	GLN
1	B	192	ASN
1	D	192	ASN
1	D	240	GLN

### 5.3.3 RNA [i](#)

There are no RNA molecules in this entry.

## 5.4 Non-standard residues in protein, DNA, RNA chains [i](#)

There are no non-standard protein/DNA/RNA residues in this entry.

## 5.5 Carbohydrates [i](#)

There are no carbohydrates in this entry.

## 5.6 Ligand geometry [i](#)

8 ligands are modelled in this entry.

In the following table, the Counts columns list the number of bonds (or angles) for which Mogul statistics could be retrieved, the number of bonds (or angles) that are observed in the model and the number of bonds (or angles) that are defined in the Chemical Component Dictionary. The Link column lists molecule types, if any, to which the group is linked. The Z score for a bond length (or angle) is the number of standard deviations the observed value is removed from the expected value. A bond length (or angle) with  $|Z| > 2$  is considered an outlier worth inspection. RMSZ is the root-mean-square of all Z scores of the bond lengths (or angles).

Mol	Type	Chain	Res	Link	Bond lengths			Bond angles		
					Counts	RMSZ	# $ Z  > 2$	Counts	RMSZ	# $ Z  > 2$
2	NAP	A	301	-	28,33,52	1.44	3 (10%)	32,52,80	1.96	4 (12%)
2	NAP	B	301	-	28,33,52	1.37	3 (10%)	32,52,80	2.13	5 (15%)
3	EPE	B	302	-	15,15,15	0.70	0	18,20,20	2.02	2 (11%)
2	NAP	C	301	-	28,33,52	1.34	3 (10%)	32,52,80	2.01	2 (6%)
3	EPE	C	302	-	15,15,15	0.48	0	18,20,20	2.40	4 (22%)
2	NAP	D	301	-	28,33,52	1.43	4 (14%)	32,52,80	2.17	4 (12%)
2	NAP	E	301	-	28,33,52	1.36	3 (10%)	32,52,80	2.40	3 (9%)
2	NAP	F	301	-	28,33,52	1.44	4 (14%)	32,52,80	2.01	3 (9%)

In the following table, the Chirals column lists the number of chiral outliers, the number of chiral centers analysed, the number of these observed in the model and the number defined in the Chemical Component Dictionary. Similar counts are reported in the Torsion and Rings columns. '-' means no outliers of that kind were identified.

Mol	Type	Chain	Res	Link	Chirals	Torsions	Rings
2	NAP	A	301	-	-	0/17/37/67	0/3/3/5
2	NAP	B	301	-	-	0/17/37/67	0/3/3/5
3	EPE	B	302	-	-	0/9/19/19	0/1/1/1
2	NAP	C	301	-	-	0/17/37/67	0/3/3/5
3	EPE	C	302	-	-	0/9/19/19	0/1/1/1
2	NAP	D	301	-	-	0/17/37/67	0/3/3/5
2	NAP	E	301	-	-	0/17/37/67	0/3/3/5
2	NAP	F	301	-	-	0/17/37/67	0/3/3/5

All (20) bond length outliers are listed below:

Mol	Chain	Res	Type	Atoms	Z	Observed(Å)	Ideal(Å)
2	F	301	NAP	P2B-O2B	2.13	1.63	1.59
2	D	301	NAP	PN-O3	2.26	1.63	1.60
2	E	301	NAP	C2A-N1A	2.26	1.38	1.33
2	B	301	NAP	C2A-N1A	2.47	1.38	1.33
2	D	301	NAP	C2A-N1A	2.55	1.38	1.33
2	F	301	NAP	C2A-N1A	2.56	1.38	1.33
2	A	301	NAP	C2A-N1A	2.94	1.39	1.33
2	C	301	NAP	C2A-N1A	3.08	1.39	1.33
2	B	301	NAP	PN-O1N	3.38	1.62	1.50
2	C	301	NAP	PN-O1N	3.50	1.62	1.50
2	F	301	NAP	PN-O1N	3.53	1.62	1.50
2	E	301	NAP	C2A-N3A	3.54	1.38	1.32
2	A	301	NAP	PN-O1N	3.61	1.63	1.50
2	E	301	NAP	PN-O1N	3.65	1.63	1.50
2	D	301	NAP	PN-O1N	3.67	1.63	1.50
2	D	301	NAP	C2A-N3A	3.79	1.38	1.32
2	C	301	NAP	C2A-N3A	3.82	1.38	1.32
2	F	301	NAP	C2A-N3A	3.86	1.38	1.32
2	B	301	NAP	C2A-N3A	4.21	1.39	1.32
2	A	301	NAP	C2A-N3A	4.25	1.39	1.32

All (27) bond angle outliers are listed below:

Mol	Chain	Res	Type	Atoms	Z	Observed(°)	Ideal(°)
2	E	301	NAP	N3A-C2A-N1A	-11.92	118.48	128.86
2	D	301	NAP	N3A-C2A-N1A	-10.83	119.43	128.86
2	F	301	NAP	N3A-C2A-N1A	-9.96	120.18	128.86
2	C	301	NAP	N3A-C2A-N1A	-9.55	120.54	128.86
2	B	301	NAP	N3A-C2A-N1A	-9.27	120.79	128.86
2	A	301	NAP	N3A-C2A-N1A	-9.14	120.89	128.86
2	B	301	NAP	C4B-O4B-C1B	-4.31	105.19	109.77

*Continued on next page...*



*Continued from previous page...*

Mol	Chain	Res	Type	Atoms	Z	Observed(°)	Ideal(°)
3	C	302	EPE	C3-C2-N1	-4.15	102.24	110.63
2	A	301	NAP	C4B-O4B-C1B	-2.88	106.70	109.77
2	A	301	NAP	C4A-C5A-N7A	-2.43	107.07	109.41
2	E	301	NAP	C4A-C5A-N7A	-2.35	107.14	109.41
2	B	301	NAP	O2B-P2B-O1X	-2.21	100.60	109.26
2	B	301	NAP	C4A-C5A-N7A	-2.16	107.32	109.41
2	D	301	NAP	C4A-C5A-N7A	-2.03	107.45	109.41
2	F	301	NAP	C4B-O4B-C1B	2.09	111.99	109.77
2	D	301	NAP	O4B-C4B-C5B	2.22	116.89	109.40
3	C	302	EPE	C6-C5-N4	2.50	115.70	110.63
2	A	301	NAP	O5D-PN-O2N	2.58	118.01	107.61
2	F	301	NAP	O5D-PN-O2N	2.62	118.16	107.61
2	D	301	NAP	O5D-PN-O2N	2.90	119.33	107.61
3	C	302	EPE	C5-N4-C3	3.06	115.80	108.87
2	B	301	NAP	O5D-PN-O2N	3.47	121.62	107.61
2	C	301	NAP	O5D-PN-O2N	3.67	122.41	107.61
2	E	301	NAP	O5D-PN-O2N	3.68	122.48	107.61
3	B	302	EPE	O3S-S-C10	4.66	111.79	106.06
3	B	302	EPE	O2S-S-C10	5.53	111.54	106.79
3	C	302	EPE	O3S-S-C10	7.67	115.49	106.06

There are no chirality outliers.

There are no torsion outliers.

There are no ring outliers.

3 monomers are involved in 4 short contacts:

Mol	Chain	Res	Type	Clashes	Symm-Clashes
2	A	301	NAP	1	0
2	B	301	NAP	1	0
2	C	301	NAP	2	0

## 5.7 Other polymers [i](#)

There are no such residues in this entry.

## 5.8 Polymer linkage issues [i](#)

There are no chain breaks in this entry.

## 6 Fit of model and data ⓘ

### 6.1 Protein, DNA and RNA chains ⓘ

In the following table, the column labelled ‘#RSRZ> 2’ contains the number (and percentage) of RSRZ outliers, followed by percent RSRZ outliers for the chain as percentile scores relative to all X-ray entries and entries of similar resolution. The OWAB column contains the minimum, median, 95<sup>th</sup> percentile and maximum values of the occupancy-weighted average B-factor per residue. The column labelled ‘Q< 0.9’ lists the number of (and percentage) of residues with an average occupancy less than 0.9.

Mol	Chain	Analysed	<RSRZ>	#RSRZ>2	OWAB(Å <sup>2</sup> )	Q<0.9
1	A	253/292 (86%)	-0.26	2 (0%) 86 81	14, 25, 44, 76	0
1	B	252/292 (86%)	-0.20	3 (1%) 79 72	14, 25, 44, 52	0
1	C	249/292 (85%)	-0.24	2 (0%) 86 81	14, 24, 43, 56	0
1	D	256/292 (87%)	-0.26	3 (1%) 79 72	14, 25, 43, 50	0
1	E	256/292 (87%)	-0.23	0 100 100	14, 25, 43, 49	0
1	F	259/292 (88%)	-0.25	5 (1%) 67 58	14, 25, 44, 70	0
All	All	1525/1752 (87%)	-0.24	15 (0%) 82 77	14, 25, 44, 76	0

All (15) RSRZ outliers are listed below:

Mol	Chain	Res	Type	RSRZ
1	B	43	THR	5.6
1	D	218	SER	4.5
1	B	219	GLY	3.6
1	F	43	THR	2.8
1	D	219	GLY	2.7
1	F	104	SER	2.4
1	D	33	ASP	2.4
1	B	44	ILE	2.4
1	C	103	GLN	2.3
1	F	44	ILE	2.3
1	C	43	THR	2.2
1	F	102	GLY	2.1
1	A	43	THR	2.1
1	F	218	SER	2.0
1	A	0	SER	2.0

## 6.2 Non-standard residues in protein, DNA, RNA chains [i](#)

There are no non-standard protein/DNA/RNA residues in this entry.

## 6.3 Carbohydrates [i](#)

There are no carbohydrates in this entry.

## 6.4 Ligands [i](#)

In the following table, the Atoms column lists the number of modelled atoms in the group and the number defined in the chemical component dictionary. LLDF column lists the quality of electron density of the group with respect to its neighbouring residues in protein, DNA or RNA chains. The B-factors column lists the minimum, median, 95<sup>th</sup> percentile and maximum values of B factors of atoms in the group. The column labelled 'Q< 0.9' lists the number of atoms with occupancy less than 0.9.

Mol	Type	Chain	Res	Atoms	RSCC	RSR	LLDF	B-factors(Å <sup>2</sup> )	Q<0.9
3	EPE	C	302	15/15	0.94	0.32	2.95	33,49,57,57	0
2	NAP	D	301	31/48	0.92	0.19	0.55	32,40,58,59	0
3	EPE	B	302	15/15	0.95	0.26	0.54	34,40,48,50	0
2	NAP	A	301	31/48	0.91	0.20	0.53	32,45,67,67	0
2	NAP	F	301	31/48	0.90	0.18	0.51	38,46,77,79	0
2	NAP	C	301	31/48	0.92	0.17	-0.23	27,36,54,54	0
2	NAP	B	301	31/48	0.92	0.17	-0.24	38,46,59,61	0
2	NAP	E	301	31/48	0.94	0.16	-0.56	16,29,52,54	0

## 6.5 Other polymers [i](#)

There are no such residues in this entry.