



Full wwPDB X-ray Structure Validation Report ⓘ

Sep 7, 2017 – 07:22 PM EDT

PDB ID : 5F15
Title : Crystal Structure of ArnT from Cupriavidus metallidurans bound to Undecaprenyl phosphate
Authors : Petrou, V.I.; Clarke, O.B.; Tomasek, D.; Banerjee, S.; Rajashankar, K.R.; Mancina, F.; New York Consortium on Membrane Protein Structure (NY-COMPS)
Deposited on : unknown
Resolution : 3.20 Å(reported)

This is a Full wwPDB X-ray Structure Validation Report for a publicly released PDB entry.

We welcome your comments at validation@mail.wwpdb.org

A user guide is available at

<http://wwpdb.org/validation/2016/XrayValidationReportHelp>

with specific help available everywhere you see the ⓘ symbol.

The following versions of software and data (see [references ⓘ](#)) were used in the production of this report:

MolProbity : 4.02b-467
Mogul : 1.7.2 (RC1), CSD as538be (2017)
Xtriage (Phenix) : 1.9-1692
EDS : rb-20029824
Percentile statistics : 20161228.v01 (using entries in the PDB archive December 28th 2016)
Refmac : 5.8.0135
CCP4 : 6.5.0
Ideal geometry (proteins) : Engh & Huber (2001)
Ideal geometry (DNA, RNA) : Parkinson et al. (1996)
Validation Pipeline (wwPDB-VP) : rb-20029824

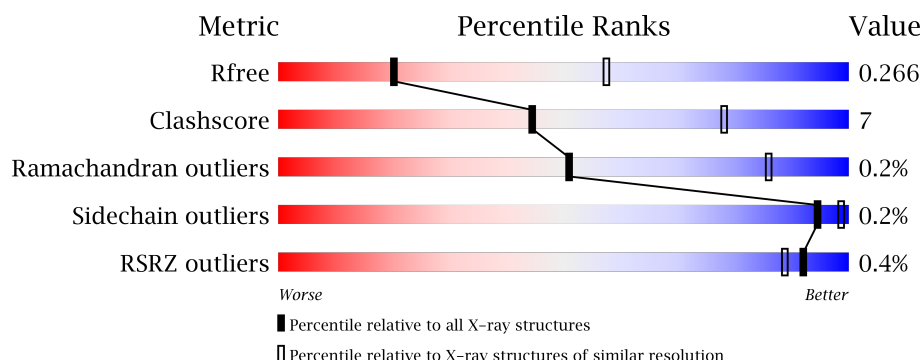
1 Overall quality at a glance

The following experimental techniques were used to determine the structure:

X-RAY DIFFRACTION

The reported resolution of this entry is 3.20 Å.

Percentile scores (ranging between 0-100) for global validation metrics of the entry are shown in the following graphic. The table shows the number of entries on which the scores are based.



Metric	Whole archive (#Entries)	Similar resolution (#Entries, resolution range(Å))
R_{free}	100719	1015 (3.22-3.18)
Clashscore	112137	1009 (3.20-3.20)
Ramachandran outliers	110173	1118 (3.22-3.18)
Sidechain outliers	110143	1117 (3.22-3.18)
RSRZ outliers	101464	1020 (3.22-3.18)

The table below summarises the geometric issues observed across the polymeric chains and their fit to the electron density. The red, orange, yellow and green segments on the lower bar indicate the fraction of residues that contain outliers for ≥ 3 , 2, 1 and 0 types of geometric quality criteria. A grey segment represents the fraction of residues that are not modelled. The numeric value for each fraction is indicated below the corresponding segment, with a dot representing fractions $\leq 5\%$. The upper red bar (where present) indicates the fraction of residues that have poor fit to the electron density. The numeric value is given above the bar.

Mol	Chain	Length	Quality of chain
1	A	578	

The following table lists non-polymeric compounds, carbohydrate monomers and non-standard residues in protein, DNA, RNA chains that are outliers for geometric or electron-density-fit criteria:

Mol	Type	Chain	Res	Chirality	Geometry	Clashes	Electron density
2	MPG	A	602	-	-	-	X
2	MPG	A	603	-	-	-	X

Continued on next page...

Continued from previous page...

Mol	Type	Chain	Res	Chirality	Geometry	Clashes	Electron density
2	MPG	A	604	-	-	-	X
2	MPG	A	605	-	-	-	X
2	MPG	A	607	-	-	-	X
2	MPG	A	608	-	-	-	X
2	MPG	A	616	-	-	-	X
2	MPG	A	617	-	-	-	X
2	MPG	A	618	-	-	-	X
2	MPG	A	620	-	-	-	X
2	MPG	A	621	-	-	-	X
2	MPG	A	623	-	-	-	X
2	MPG	A	624	-	-	-	X
2	MPG	A	626	-	-	-	X
2	MPG	A	631	-	-	-	X
2	MPG	A	632	-	-	-	X
2	MPG	A	635	-	-	-	X
2	MPG	A	636	-	-	-	X
2	MPG	A	641	-	-	-	X
2	MPG	A	647	-	-	-	X
2	MPG	A	650	-	-	-	X
2	MPG	A	661	-	-	-	X
3	EPE	A	677	-	-	-	X
5	CL	A	680	-	-	-	X
6	5TR	A	681	-	-	-	X

2 Entry composition [i](#)

There are 7 unique types of molecules in this entry. The entry contains 4804 atoms, of which 0 are hydrogens and 0 are deuteriums.

In the tables below, the ZeroOcc column contains the number of atoms modelled with zero occupancy, the AltConf column contains the number of residues with at least one atom in alternate conformation and the Trace column contains the number of residues modelled with at most 2 atoms.

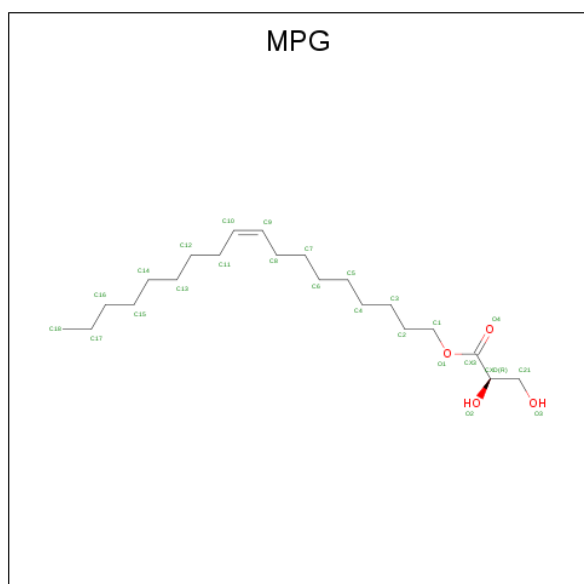
- Molecule 1 is a protein called 4-amino-4-deoxy-L-arabinose (L-Ara4N) transferase.

Mol	Chain	Residues	Atoms					ZeroOcc	AltConf	Trace
1	A	541	Total	C	N	O	S	0	0	0
			4171	2763	700	679	29			

There are 3 discrepancies between the modelled and reference sequences:

Chain	Residue	Modelled	Actual	Comment	Reference
A	-2	SER	-	expression tag	UNP Q1LDT6
A	-1	TYR	-	expression tag	UNP Q1LDT6
A	0	VAL	-	expression tag	UNP Q1LDT6

- Molecule 2 is [(Z)-octadec-9-enyl] (2R)-2,3-bis(oxidanyl)propanoate (three-letter code: MPG) (formula: C₂₁H₄₀O₄).



Mol	Chain	Residues	Atoms		ZeroOcc	AltConf
2	A	1	Total	C	0	0
			13	13		

Continued on next page...

Continued from previous page...

Mol	Chain	Residues	Atoms	ZeroOcc	AltConf
2	A	1	Total C 11 11	0	0
2	A	1	Total C 9 9	0	0
2	A	1	Total C 9 9	0	0
2	A	1	Total C 10 10	0	0
2	A	1	Total C 4 4	0	0
2	A	1	Total C 10 10	0	0
2	A	1	Total C 6 6	0	0
2	A	1	Total C 6 6	0	0
2	A	1	Total C 8 8	0	0
2	A	1	Total C 6 6	0	0
2	A	1	Total C 18 18	0	0
2	A	1	Total C 6 6	0	0
2	A	1	Total C 5 5	0	0
2	A	1	Total C 10 10	0	0
2	A	1	Total C 10 10	0	0
2	A	1	Total C 14 14	0	0
2	A	1	Total C 7 7	0	0
2	A	1	Total C 6 6	0	0
2	A	1	Total C 5 5	0	0
2	A	1	Total C 5 5	0	0
2	A	1	Total C 10 10	0	0

Continued on next page...

Continued from previous page...

Mol	Chain	Residues	Atoms	ZeroOcc	AltConf
2	A	1	Total C 10 10	0	0
2	A	1	Total C 10 10	0	0
2	A	1	Total C 7 7	0	0
2	A	1	Total C 6 6	0	0
2	A	1	Total C 6 6	0	0
2	A	1	Total C 6 6	0	0
2	A	1	Total C 5 5	0	0
2	A	1	Total C 5 5	0	0
2	A	1	Total C 5 5	0	0
2	A	1	Total C 7 7	0	0
2	A	1	Total C 5 5	0	0
2	A	1	Total C 7 7	0	0
2	A	1	Total C 7 7	0	0
2	A	1	Total C 6 6	0	0
2	A	1	Total C 6 6	0	0
2	A	1	Total C 7 7	0	0
2	A	1	Total C 7 7	0	0
2	A	1	Total C 6 6	0	0
2	A	1	Total C 6 6	0	0
2	A	1	Total C 5 5	0	0
2	A	1	Total C 6 6	0	0

Continued on next page...

Continued from previous page...

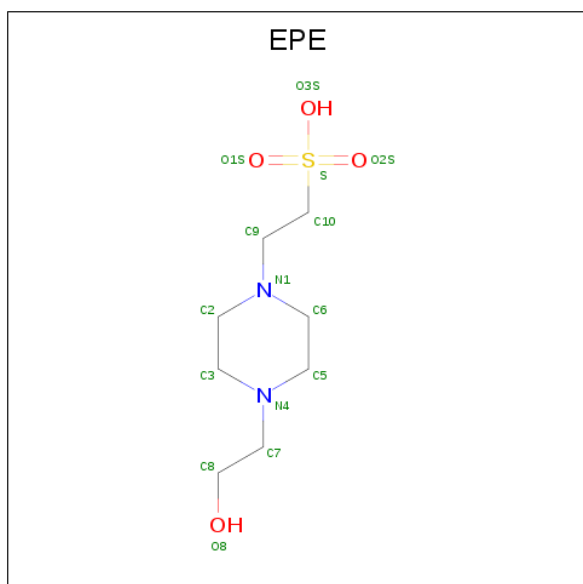
Mol	Chain	Residues	Atoms	ZeroOcc	AltConf
2	A	1	Total C 8 8	0	0
2	A	1	Total C 7 7	0	0
2	A	1	Total C 4 4	0	0
2	A	1	Total C 7 7	0	0
2	A	1	Total C 8 8	0	0
2	A	1	Total C 6 6	0	0
2	A	1	Total C 6 6	0	0
2	A	1	Total C 6 6	0	0
2	A	1	Total C 6 6	0	0
2	A	1	Total C 8 8	0	0
2	A	1	Total C 6 6	0	0
2	A	1	Total C 7 7	0	0
2	A	1	Total C 6 6	0	0
2	A	1	Total C 5 5	0	0
2	A	1	Total C 7 7	0	0
2	A	1	Total C 6 6	0	0
2	A	1	Total C 4 4	0	0
2	A	1	Total C 10 10	0	0
2	A	1	Total C 7 7	0	0
2	A	1	Total C 4 4	0	0
2	A	1	Total C 6 6	0	0

Continued on next page...

Continued from previous page...

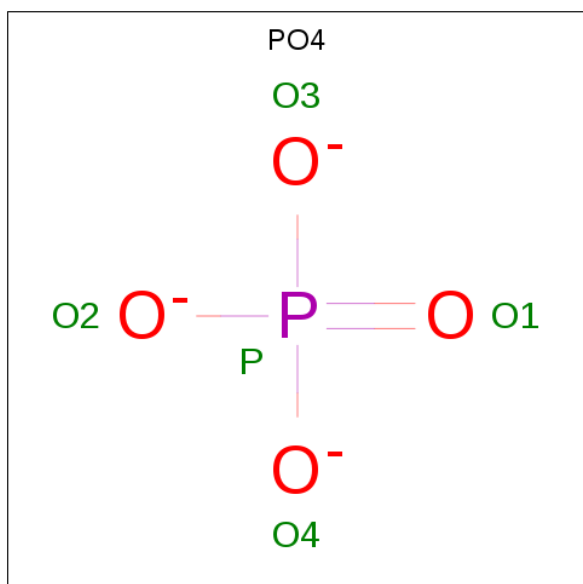
Mol	Chain	Residues	Atoms	ZeroOcc	AltConf
2	A	1	Total C 8 8	0	0
2	A	1	Total C 16 16	0	0
2	A	1	Total C 7 7	0	0
2	A	1	Total C 3 3	0	0
2	A	1	Total C 6 6	0	0
2	A	1	Total C 6 6	0	0
2	A	1	Total C 8 8	0	0
2	A	1	Total C 6 6	0	0
2	A	1	Total C 3 3	0	0
2	A	1	Total C 6 6	0	0
2	A	1	Total C 5 5	0	0
2	A	1	Total C 14 14	0	0

- Molecule 3 is 4-(2-HYDROXYETHYL)-1-PIPERAZINE ETHANESULFONIC ACID (three-letter code: EPE) (formula: C₈H₁₈N₂O₄S).



Mol	Chain	Residues	Atoms					ZeroOcc	AltConf
3	A	1	Total	C	N	O	S	0	0
			15	8	2	4	1		

- Molecule 4 is PHOSPHATE ION (three-letter code: PO4) (formula: O₄P).

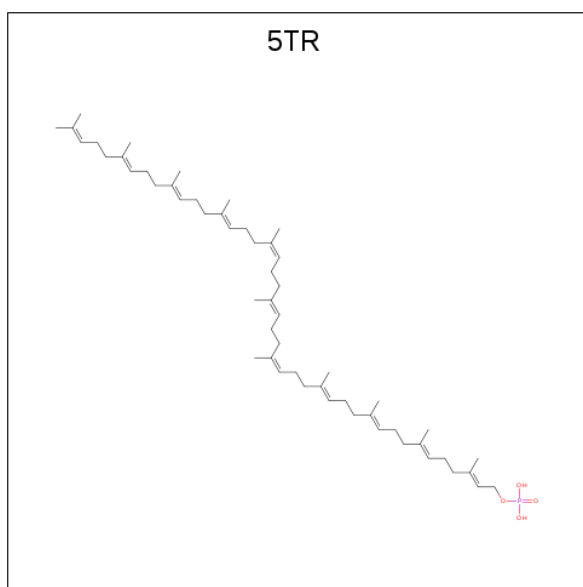


Mol	Chain	Residues	Atoms			ZeroOcc	AltConf
4	A	1	Total	O	P	0	0
			5	4	1		

- Molecule 5 is CHLORIDE ION (three-letter code: CL) (formula: Cl).

Mol	Chain	Residues	Atoms		ZeroOcc	AltConf
5	A	2	Total	Cl	0	0
			2	2		

- Molecule 6 is [(2 {E},6 {E},10 {E},14 {E},18 {Z},22 {E},26 {Z},30 {E},34 {E},38 {E})-3,7,11,15,19,23,27,31,35,39,43-undecamethyltetratetraconta-2,6,10,14,18,22,26,30,34,38,42-undecaenyl] dihydrogen phosphate (three-letter code: 5TR) (formula: C₅₅H₉₁O₄P).



Mol	Chain	Residues	Atoms				ZeroOcc	AltConf
6	A	1	Total	C	O	P	0	0
			60	55	4	1		

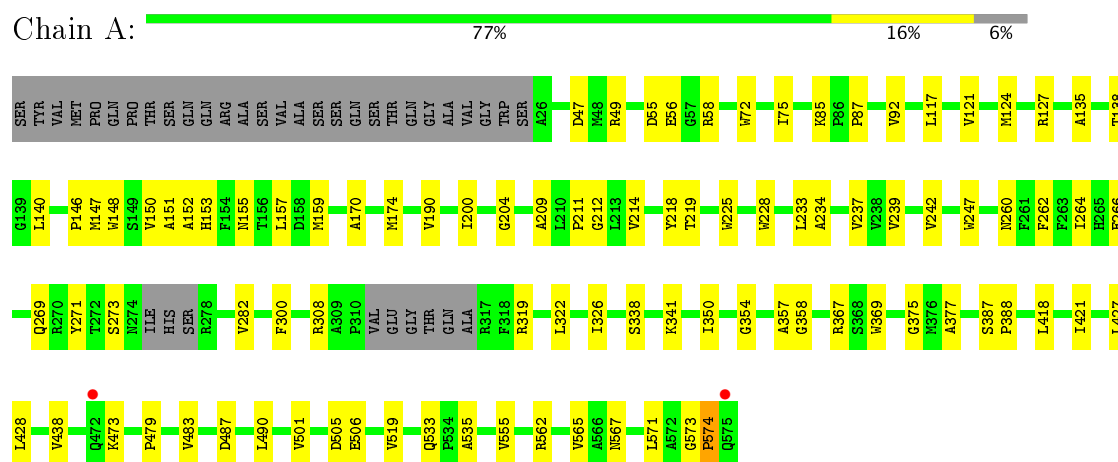
- Molecule 7 is water.

Mol	Chain	Residues	Atoms		ZeroOcc	AltConf
7	A	6	Total	O	0	0
			6	6		

3 Residue-property plots

These plots are drawn for all protein, RNA and DNA chains in the entry. The first graphic for a chain summarises the proportions of the various outlier classes displayed in the second graphic. The second graphic shows the sequence view annotated by issues in geometry and electron density. Residues are color-coded according to the number of geometric quality criteria for which they contain at least one outlier: green = 0, yellow = 1, orange = 2 and red = 3 or more. A red dot above a residue indicates a poor fit to the electron density ($RSRZ > 2$). Stretches of 2 or more consecutive residues without any outlier are shown as a green connector. Residues present in the sample, but not in the model, are shown in grey.

- Molecule 1: 4-amino-4-deoxy-L-arabinose (L-Ara4N) transferase



4 Data and refinement statistics

Property	Value	Source
Space group	P 21 21 21	Depositor
Cell constants a, b, c, α , β , γ	59.65Å 80.32Å 150.16Å 90.00° 90.00° 90.00°	Depositor
Resolution (Å)	47.89 – 3.20 47.89 – 3.20	Depositor EDS
% Data completeness (in resolution range)	99.7 (47.89-3.20) 99.7 (47.89-3.20)	Depositor EDS
R_{merge}	0.37	Depositor
R_{sym}	(Not available)	Depositor
$\langle I/\sigma(I) \rangle$ ¹	1.67 (at 3.19Å)	Xtriage
Refinement program	PHENIX	Depositor
R, R_{free}	0.222 , 0.263 0.214 , 0.266	Depositor DCC
R_{free} test set	667 reflections (5.37%)	DCC
Wilson B-factor (Å ²)	62.6	Xtriage
Anisotropy	0.414	Xtriage
Bulk solvent k_{sol} (e/Å ³), B_{sol} (Å ²)	0.29 , 63.5	EDS
L-test for twinning ²	$\langle L \rangle = 0.47$, $\langle L^2 \rangle = 0.30$	Xtriage
Estimated twinning fraction	No twinning to report.	Xtriage
F_o, F_c correlation	0.88	EDS
Total number of atoms	4804	wwPDB-VP
Average B, all atoms (Å ²)	50.0	wwPDB-VP

Xtriage's analysis on translational NCS is as follows: *The largest off-origin peak in the Patterson function is 4.58% of the height of the origin peak. No significant pseudotranslation is detected.*

¹Intensities estimated from amplitudes.

²Theoretical values of $\langle |L| \rangle$, $\langle L^2 \rangle$ for acentric reflections are 0.5, 0.333 respectively for untwinned datasets, and 0.375, 0.2 for perfectly twinned datasets.

5 Model quality

5.1 Standard geometry

Bond lengths and bond angles in the following residue types are not validated in this section: 5TR, MPG, PO4, EPE, CL

The Z score for a bond length (or angle) is the number of standard deviations the observed value is removed from the expected value. A bond length (or angle) with $|Z| > 5$ is considered an outlier worth inspection. RMSZ is the root-mean-square of all Z scores of the bond lengths (or angles).

Mol	Chain	Bond lengths		Bond angles	
		RMSZ	# Z >5	RMSZ	# Z >5
1	A	0.25	0/4298	0.40	0/5876

There are no bond length outliers.

There are no bond angle outliers.

There are no chirality outliers.

There are no planarity outliers.

5.2 Too-close contacts

In the following table, the Non-H and H(model) columns list the number of non-hydrogen atoms and hydrogen atoms in the chain respectively. The H(added) column lists the number of hydrogen atoms added and optimized by MolProbity. The Clashes column lists the number of clashes within the asymmetric unit, whereas Symm-Clashes lists symmetry related clashes.

Mol	Chain	Non-H	H(model)	H(added)	Clashes	Symm-Clashes
1	A	4171	0	4252	62	0
2	A	545	0	769	18	0
3	A	15	0	17	0	0
4	A	5	0	0	0	0
5	A	2	0	0	1	0
6	A	60	0	91	11	0
7	A	6	0	0	0	0
All	All	4804	0	5129	74	0

The all-atom clashscore is defined as the number of clashes found per 1000 atoms (including hydrogen atoms). The all-atom clashscore for this structure is 7.

All (74) close contacts within the same asymmetric unit are listed below, sorted by their clash magnitude.

Atom-1	Atom-2	Interatomic distance (Å)	Clash overlap (Å)
1:A:146:PRO:O	1:A:150:VAL:HB	1.91	0.70
2:A:634:MPG:H61C	2:A:635:MPG:H41C	1.77	0.67
1:A:147:MET:O	1:A:151:ALA:HB3	1.97	0.65
1:A:75:ILE:HD11	1:A:87:PRO:HB3	1.77	0.65
1:A:55:ASP:OD1	1:A:58:ARG:NH2	2.35	0.59
1:A:211:PRO:HB2	6:A:681:5TR:H64	1.83	0.59
1:A:418:LEU:HB3	2:A:607:MPG:H32C	1.86	0.58
1:A:152:ALA:HA	1:A:159:MET:HG2	1.86	0.58
1:A:271:TYR:HB2	6:A:681:5TR:H36	1.87	0.57
1:A:49:ARG:NH1	1:A:153:HIS:O	2.36	0.57
2:A:612:MPG:H42C	2:A:676:MPG:H22C	1.85	0.57
1:A:427:LEU:HD12	1:A:438:VAL:HG21	1.87	0.55
1:A:147:MET:O	1:A:151:ALA:CB	2.56	0.54
1:A:92:VAL:HG13	2:A:623:MPG:H71C	1.89	0.54
1:A:85:LYS:HD2	1:A:157:LEU:HD22	1.89	0.54
1:A:233:LEU:O	1:A:237:VAL:HB	2.09	0.52
1:A:505:ASP:OD1	1:A:506:GLU:N	2.42	0.52
1:A:473:LYS:HE2	1:A:571:LEU:HA	1.92	0.51
2:A:638:MPG:H51C	2:A:648:MPG:H72C	1.91	0.51
1:A:501:VAL:HG22	1:A:519:VAL:HB	1.94	0.50
1:A:533:GLN:O	1:A:567:ASN:ND2	2.44	0.50
1:A:473:LYS:HB3	1:A:571:LEU:HD22	1.94	0.49
1:A:121:VAL:HG13	1:A:124:MET:HE1	1.94	0.49
1:A:319:ARG:HH21	1:A:322:LEU:HD22	1.77	0.48
1:A:242:VAL:HA	2:A:640:MPG:H21C	1.96	0.48
1:A:47:ASP:HB3	2:A:610:MPG:H72C	1.95	0.48
1:A:260:ASN:O	1:A:264:ILE:HB	2.14	0.48
2:A:653:MPG:H72C	2:A:654:MPG:H42C	1.95	0.48
6:A:681:5TR:H58	6:A:681:5TR:H33	1.73	0.47
1:A:87:PRO:HG3	1:A:247:TRP:CE2	2.50	0.47
1:A:140:LEU:HD21	2:A:602:MPG:H81C	1.95	0.47
1:A:308:ARG:NH1	1:A:308:ARG:O	2.43	0.47
1:A:234:ALA:HB1	2:A:659:MPG:H21C	1.97	0.46
1:A:72:TRP:HB2	2:A:650:MPG:H52C	1.98	0.46
6:A:681:5TR:H42	6:A:681:5TR:H11	1.74	0.46
1:A:214:VAL:HG13	1:A:326:ILE:HG22	1.97	0.46
1:A:367:ARG:HA	2:A:642:MPG:H62C	1.98	0.45
1:A:338:SER:O	1:A:341:LYS:NZ	2.38	0.45
1:A:121:VAL:HG12	1:A:170:ALA:HB3	1.98	0.45
6:A:681:5TR:H17	6:A:681:5TR:H54	1.75	0.45
1:A:377:ALA:HB2	1:A:421:ILE:HG21	1.99	0.45
1:A:56:GLU:HA	1:A:155:ASN:HB3	1.99	0.44

Continued on next page...

Continued from previous page...

Atom-1	Atom-2	Interatomic distance (Å)	Clash overlap (Å)
1:A:218:TYR:HA	1:A:326:ILE:HD13	2.00	0.44
1:A:219:THR:HG21	1:A:228:TRP:NE1	2.33	0.44
1:A:49:ARG:HD2	5:A:680:CL:CL	2.54	0.44
1:A:369:TRP:HD1	1:A:428:LEU:HD13	1.83	0.43
1:A:555:VAL:HA	1:A:565:VAL:HG12	2.01	0.43
6:A:681:5TR:H31	6:A:681:5TR:H26	1.81	0.43
1:A:135:ALA:O	1:A:138:THR:OG1	2.27	0.43
1:A:148:TRP:HB2	1:A:350:ILE:HG21	2.00	0.43
1:A:138:THR:HG23	1:A:358:GLY:HA3	2.00	0.43
1:A:375:GLY:HA3	2:A:605:MPG:H52C	2.01	0.43
2:A:651:MPG:H52C	2:A:652:MPG:H52C	2.00	0.43
1:A:483:VAL:HA	1:A:501:VAL:HB	2.00	0.43
1:A:170:ALA:O	1:A:174:MET:HG2	2.20	0.42
1:A:282:VAL:HG22	2:A:621:MPG:H21C	2.02	0.42
1:A:490:LEU:HD22	1:A:562:ARG:HD3	2.00	0.42
1:A:269:GLN:O	1:A:273:SER:OG	2.29	0.42
1:A:212:GLY:HA3	6:A:681:5TR:H38	2.02	0.42
1:A:487:ASP:OD2	1:A:562:ARG:NE	2.43	0.41
1:A:209:ALA:HB1	6:A:681:5TR:H47	2.01	0.41
6:A:681:5TR:H27	6:A:681:5TR:H14	1.57	0.41
6:A:681:5TR:H14	6:A:681:5TR:H9	1.82	0.41
1:A:262:PHE:O	1:A:266:GLU:HB2	2.21	0.41
1:A:387:SER:OG	1:A:388:PRO:HD3	2.21	0.41
1:A:225:TRP:CG	2:A:601:MPG:H22C	2.56	0.41
1:A:573:GLY:HA3	1:A:574:PRO:HD3	1.82	0.41
1:A:479:PRO:HD2	1:A:535:ALA:HB2	2.02	0.41
1:A:127:ARG:HD2	2:A:608:MPG:H22C	2.03	0.41
1:A:200:ILE:HA	1:A:204:GLY:O	2.21	0.41
1:A:354:GLY:O	1:A:357:ALA:HB3	2.20	0.40
1:A:190:VAL:HG13	1:A:239:VAL:HG21	2.02	0.40
1:A:117:LEU:HA	2:A:611:MPG:H31C	2.04	0.40
6:A:681:5TR:H75	6:A:681:5TR:H76	1.79	0.40

There are no symmetry-related clashes.

5.3 Torsion angles ⓘ

5.3.1 Protein backbone ⓘ

In the following table, the Percentiles column shows the percent Ramachandran outliers of the chain as a percentile score with respect to all X-ray entries followed by that with respect to entries

of similar resolution.

The Analysed column shows the number of residues for which the backbone conformation was analysed, and the total number of residues.

Mol	Chain	Analysed	Favoured	Allowed	Outliers	Percentiles
1	A	535/578 (93%)	514 (96%)	20 (4%)	1 (0%)	51 86

All (1) Ramachandran outliers are listed below:

Mol	Chain	Res	Type
1	A	574	PRO

5.3.2 Protein sidechains ⓘ

In the following table, the Percentiles column shows the percent sidechain outliers of the chain as a percentile score with respect to all X-ray entries followed by that with respect to entries of similar resolution.

The Analysed column shows the number of residues for which the sidechain conformation was analysed, and the total number of residues.

Mol	Chain	Analysed	Rotameric	Outliers	Percentiles
1	A	423/456 (93%)	422 (100%)	1 (0%)	94 98

All (1) residues with a non-rotameric sidechain are listed below:

Mol	Chain	Res	Type
1	A	300	PHE

Some sidechains can be flipped to improve hydrogen bonding and reduce clashes. There are no such sidechains identified.

5.3.3 RNA ⓘ

There are no RNA molecules in this entry.

5.4 Non-standard residues in protein, DNA, RNA chains ⓘ

There are no non-standard protein/DNA/RNA residues in this entry.

5.5 Carbohydrates

There are no carbohydrates in this entry.

5.6 Ligand geometry

Of 81 ligands modelled in this entry, 2 are monoatomic - leaving 79 for Mogul analysis.

In the following table, the Counts columns list the number of bonds (or angles) for which Mogul statistics could be retrieved, the number of bonds (or angles) that are observed in the model and the number of bonds (or angles) that are defined in the chemical component dictionary. The Link column lists molecule types, if any, to which the group is linked. The Z score for a bond length (or angle) is the number of standard deviations the observed value is removed from the expected value. A bond length (or angle) with $|Z| > 2$ is considered an outlier worth inspection. RMSZ is the root-mean-square of all Z scores of the bond lengths (or angles).

Mol	Type	Chain	Res	Link	Bond lengths			Bond angles		
					Counts	RMSZ	# Z > 2	Counts	RMSZ	# Z > 2
2	MPG	A	601	-	12,12,24	1.35	1 (8%)	11,11,25	0.77	0
2	MPG	A	602	-	10,10,24	1.25	1 (10%)	9,9,25	0.99	1 (11%)
2	MPG	A	603	-	8,8,24	0.45	0	7,7,25	0.32	0
2	MPG	A	604	-	8,8,24	0.44	0	7,7,25	0.34	0
2	MPG	A	605	-	9,9,24	1.44	1 (11%)	8,8,25	0.86	1 (12%)
2	MPG	A	606	-	3,3,24	0.47	0	2,2,25	0.60	0
2	MPG	A	607	-	9,9,24	1.44	1 (11%)	8,8,25	0.84	1 (12%)
2	MPG	A	608	-	5,5,24	0.35	0	4,4,25	0.24	0
2	MPG	A	609	-	5,5,24	0.36	0	4,4,25	0.24	0
2	MPG	A	610	-	7,7,24	0.41	0	6,6,25	0.31	0
2	MPG	A	611	-	5,5,24	0.36	0	4,4,25	0.23	0
2	MPG	A	612	-	17,17,24	1.22	1 (5%)	16,16,25	0.70	0
2	MPG	A	613	-	5,5,24	0.36	0	4,4,25	0.23	0
2	MPG	A	614	-	4,4,24	0.35	0	3,3,25	0.29	0
2	MPG	A	615	-	9,9,24	1.44	1 (11%)	8,8,25	0.82	1 (12%)
2	MPG	A	616	-	9,9,24	1.44	1 (11%)	8,8,25	0.84	1 (12%)
2	MPG	A	617	-	13,13,24	1.35	1 (7%)	12,12,25	0.76	0
2	MPG	A	618	-	6,6,24	0.39	0	5,5,25	0.27	0
2	MPG	A	619	-	5,5,24	0.35	0	4,4,25	0.25	0
2	MPG	A	620	-	4,4,24	0.40	0	3,3,25	0.30	0
2	MPG	A	621	-	4,4,24	0.35	0	3,3,25	0.27	0
2	MPG	A	622	-	9,9,24	1.44	1 (11%)	8,8,25	0.82	1 (12%)
2	MPG	A	623	-	9,9,24	1.43	1 (11%)	8,8,25	0.87	1 (12%)
2	MPG	A	624	-	9,9,24	1.44	1 (11%)	8,8,25	0.84	1 (12%)
2	MPG	A	625	-	6,6,24	0.38	0	5,5,25	0.30	0

Mol	Type	Chain	Res	Link	Bond lengths			Bond angles		
					Counts	RMSZ	# Z > 2	Counts	RMSZ	# Z > 2
2	MPG	A	626	-	5,5,24	0.35	0	4,4,25	0.25	0
2	MPG	A	627	-	5,5,24	0.36	0	4,4,25	0.24	0
2	MPG	A	628	-	5,5,24	0.36	0	4,4,25	0.24	0
2	MPG	A	629	-	4,4,24	0.35	0	3,3,25	0.31	0
2	MPG	A	630	-	4,4,24	0.36	0	3,3,25	0.29	0
2	MPG	A	631	-	4,4,24	0.35	0	3,3,25	0.31	0
2	MPG	A	632	-	6,6,24	0.38	0	5,5,25	0.30	0
2	MPG	A	633	-	4,4,24	0.35	0	3,3,25	0.30	0
2	MPG	A	634	-	6,6,24	0.39	0	5,5,25	0.27	0
2	MPG	A	635	-	6,6,24	0.38	0	5,5,25	0.28	0
2	MPG	A	636	-	5,5,24	0.36	0	4,4,25	0.24	0
2	MPG	A	637	-	5,5,24	0.35	0	4,4,25	0.25	0
2	MPG	A	638	-	6,6,24	0.39	0	5,5,25	0.27	0
2	MPG	A	639	-	6,6,24	0.39	0	5,5,25	0.22	0
2	MPG	A	640	-	5,5,24	0.35	0	4,4,25	0.24	0
2	MPG	A	641	-	5,5,24	0.35	0	4,4,25	0.25	0
2	MPG	A	642	-	4,4,24	0.52	0	3,3,25	0.29	0
2	MPG	A	643	-	5,5,24	0.35	0	4,4,25	0.25	0
2	MPG	A	644	-	7,7,24	0.41	0	6,6,25	0.31	0
2	MPG	A	645	-	6,6,24	0.38	0	5,5,25	0.28	0
2	MPG	A	646	-	3,3,24	0.53	0	2,2,25	0.60	0
2	MPG	A	647	-	6,6,24	0.38	0	5,5,25	0.29	0
2	MPG	A	648	-	7,7,24	0.42	0	6,6,25	0.30	0
2	MPG	A	649	-	5,5,24	0.35	0	4,4,25	0.24	0
2	MPG	A	650	-	5,5,24	0.35	0	4,4,25	0.25	0
2	MPG	A	651	-	5,5,24	0.36	0	4,4,25	0.24	0
2	MPG	A	652	-	5,5,24	0.35	0	4,4,25	0.24	0
2	MPG	A	653	-	7,7,24	0.41	0	6,6,25	0.29	0
2	MPG	A	654	-	5,5,24	0.36	0	4,4,25	0.16	0
2	MPG	A	655	-	6,6,24	0.42	0	5,5,25	0.28	0
2	MPG	A	656	-	5,5,24	0.36	0	4,4,25	0.23	0
2	MPG	A	657	-	4,4,24	0.36	0	3,3,25	0.26	0
2	MPG	A	658	-	6,6,24	0.38	0	5,5,25	0.28	0
2	MPG	A	659	-	5,5,24	0.36	0	4,4,25	0.24	0
2	MPG	A	660	-	3,3,24	0.63	0	2,2,25	0.60	0
2	MPG	A	661	-	9,9,24	1.44	1 (11%)	8,8,25	0.84	1 (12%)
2	MPG	A	662	-	6,6,24	0.38	0	5,5,25	0.29	0
2	MPG	A	663	-	3,3,24	0.53	0	2,2,25	0.60	0
2	MPG	A	664	-	5,5,24	0.35	0	4,4,25	0.24	0
2	MPG	A	665	-	7,7,24	0.42	0	6,6,25	0.31	0
2	MPG	A	666	-	15,15,24	1.28	1 (6%)	14,14,25	0.73	0
2	MPG	A	667	-	6,6,24	0.38	0	5,5,25	0.29	0

Mol	Type	Chain	Res	Link	Bond lengths			Bond angles		
					Counts	RMSZ	# Z > 2	Counts	RMSZ	# Z > 2
2	MPG	A	668	-	2,2,24	0.35	0	0,1,25	0.00	-
2	MPG	A	669	-	5,5,24	0.39	0	4,4,25	0.24	0
2	MPG	A	670	-	5,5,24	0.36	0	4,4,25	0.23	0
2	MPG	A	671	-	7,7,24	0.42	0	6,6,25	0.25	0
2	MPG	A	672	-	5,5,24	0.36	0	4,4,25	0.25	0
2	MPG	A	673	-	2,2,24	0.38	0	0,1,25	0.00	-
2	MPG	A	674	-	5,5,24	0.44	0	4,4,25	0.24	0
2	MPG	A	675	-	4,4,24	0.35	0	3,3,25	0.30	0
2	MPG	A	676	-	13,13,24	1.34	1 (7%)	12,12,25	0.77	0
3	EPE	A	677	-	15,15,15	0.81	1 (6%)	18,20,20	2.09	7 (38%)
4	PO4	A	678	-	4,4,4	0.76	0	6,6,6	0.40	0
6	5TR	A	681	-	59,59,59	1.69	15 (25%)	71,72,72	1.70	21 (29%)

In the following table, the Chirals column lists the number of chiral outliers, the number of chiral centers analysed, the number of these observed in the model and the number defined in the chemical component dictionary. Similar counts are reported in the Torsion and Rings columns. '-' means no outliers of that kind were identified.

Mol	Type	Chain	Res	Link	Chirals	Torsions	Rings
2	MPG	A	601	-	-	0/10/10/25	0/0/0/0
2	MPG	A	602	-	-	0/8/8/25	0/0/0/0
2	MPG	A	603	-	-	0/6/6/25	0/0/0/0
2	MPG	A	604	-	-	0/6/6/25	0/0/0/0
2	MPG	A	605	-	-	0/7/7/25	0/0/0/0
2	MPG	A	606	-	-	0/1/1/25	0/0/0/0
2	MPG	A	607	-	-	0/7/7/25	0/0/0/0
2	MPG	A	608	-	-	0/3/3/25	0/0/0/0
2	MPG	A	609	-	-	0/3/3/25	0/0/0/0
2	MPG	A	610	-	-	0/5/5/25	0/0/0/0
2	MPG	A	611	-	-	0/3/3/25	0/0/0/0
2	MPG	A	612	-	-	0/15/15/25	0/0/0/0
2	MPG	A	613	-	-	0/3/3/25	0/0/0/0
2	MPG	A	614	-	-	0/2/2/25	0/0/0/0
2	MPG	A	615	-	-	0/7/7/25	0/0/0/0
2	MPG	A	616	-	-	0/7/7/25	0/0/0/0
2	MPG	A	617	-	-	0/11/11/25	0/0/0/0
2	MPG	A	618	-	-	0/4/4/25	0/0/0/0
2	MPG	A	619	-	-	0/3/3/25	0/0/0/0
2	MPG	A	620	-	-	0/2/2/25	0/0/0/0
2	MPG	A	621	-	-	0/2/2/25	0/0/0/0
2	MPG	A	622	-	-	0/7/7/25	0/0/0/0
2	MPG	A	623	-	-	0/7/7/25	0/0/0/0

Continued on next page...

Continued from previous page...

Mol	Type	Chain	Res	Link	Chirals	Torsions	Rings
2	MPG	A	624	-	-	0/7/7/25	0/0/0/0
2	MPG	A	625	-	-	0/4/4/25	0/0/0/0
2	MPG	A	626	-	-	0/3/3/25	0/0/0/0
2	MPG	A	627	-	-	0/3/3/25	0/0/0/0
2	MPG	A	628	-	-	0/3/3/25	0/0/0/0
2	MPG	A	629	-	-	0/2/2/25	0/0/0/0
2	MPG	A	630	-	-	0/2/2/25	0/0/0/0
2	MPG	A	631	-	-	0/2/2/25	0/0/0/0
2	MPG	A	632	-	-	0/4/4/25	0/0/0/0
2	MPG	A	633	-	-	0/2/2/25	0/0/0/0
2	MPG	A	634	-	-	0/4/4/25	0/0/0/0
2	MPG	A	635	-	-	0/4/4/25	0/0/0/0
2	MPG	A	636	-	-	0/3/3/25	0/0/0/0
2	MPG	A	637	-	-	0/3/3/25	0/0/0/0
2	MPG	A	638	-	-	0/4/4/25	0/0/0/0
2	MPG	A	639	-	-	0/4/4/25	0/0/0/0
2	MPG	A	640	-	-	0/3/3/25	0/0/0/0
2	MPG	A	641	-	-	0/3/3/25	0/0/0/0
2	MPG	A	642	-	-	0/2/2/25	0/0/0/0
2	MPG	A	643	-	-	0/3/3/25	0/0/0/0
2	MPG	A	644	-	-	0/5/5/25	0/0/0/0
2	MPG	A	645	-	-	0/4/4/25	0/0/0/0
2	MPG	A	646	-	-	0/1/1/25	0/0/0/0
2	MPG	A	647	-	-	0/4/4/25	0/0/0/0
2	MPG	A	648	-	-	0/5/5/25	0/0/0/0
2	MPG	A	649	-	-	0/3/3/25	0/0/0/0
2	MPG	A	650	-	-	0/3/3/25	0/0/0/0
2	MPG	A	651	-	-	0/3/3/25	0/0/0/0
2	MPG	A	652	-	-	0/3/3/25	0/0/0/0
2	MPG	A	653	-	-	0/5/5/25	0/0/0/0
2	MPG	A	654	-	-	0/3/3/25	0/0/0/0
2	MPG	A	655	-	-	0/4/4/25	0/0/0/0
2	MPG	A	656	-	-	0/3/3/25	0/0/0/0
2	MPG	A	657	-	-	0/2/2/25	0/0/0/0
2	MPG	A	658	-	-	0/4/4/25	0/0/0/0
2	MPG	A	659	-	-	0/3/3/25	0/0/0/0
2	MPG	A	660	-	-	0/1/1/25	0/0/0/0
2	MPG	A	661	-	-	0/7/7/25	0/0/0/0
2	MPG	A	662	-	-	0/4/4/25	0/0/0/0
2	MPG	A	663	-	-	0/1/1/25	0/0/0/0
2	MPG	A	664	-	-	0/3/3/25	0/0/0/0
2	MPG	A	665	-	-	0/5/5/25	0/0/0/0

Continued on next page...

Continued from previous page...

Mol	Type	Chain	Res	Link	Chirals	Torsions	Rings
2	MPG	A	666	-	-	0/13/13/25	0/0/0/0
2	MPG	A	667	-	-	0/4/4/25	0/0/0/0
2	MPG	A	668	-	-	0/0/0/25	0/0/0/0
2	MPG	A	669	-	-	0/3/3/25	0/0/0/0
2	MPG	A	670	-	-	0/3/3/25	0/0/0/0
2	MPG	A	671	-	-	0/5/5/25	0/0/0/0
2	MPG	A	672	-	-	0/3/3/25	0/0/0/0
2	MPG	A	673	-	-	0/0/0/25	0/0/0/0
2	MPG	A	674	-	-	0/3/3/25	0/0/0/0
2	MPG	A	675	-	-	0/2/2/25	0/0/0/0
2	MPG	A	676	-	-	0/11/11/25	0/0/0/0
3	EPE	A	677	-	-	0/9/19/19	0/1/1/1
4	PO4	A	678	-	-	0/0/0/0	0/0/0/0
6	5TR	A	681	-	-	0/67/67/67	0/0/0/0

All (30) bond length outliers are listed below:

Mol	Chain	Res	Type	Atoms	Z	Observed(Å)	Ideal(Å)
6	A	681	5TR	C10-C23	2.02	1.57	1.50
6	A	681	5TR	C09-C18	2.07	1.55	1.51
6	A	681	5TR	C55-C52	2.16	1.56	1.50
6	A	681	5TR	C50-C36	2.17	1.56	1.50
6	A	681	5TR	C28-C22	2.20	1.38	1.33
6	A	681	5TR	P01-O02	2.23	1.67	1.60
6	A	681	5TR	C07-C14	2.25	1.56	1.51
6	A	681	5TR	C38-C15	2.31	1.56	1.50
6	A	681	5TR	C17-C26	2.39	1.56	1.51
6	A	681	5TR	C58-C56	2.51	1.56	1.49
6	A	681	5TR	C08-C20	2.55	1.56	1.51
6	A	681	5TR	C47-C44	2.64	1.57	1.51
3	A	677	EPE	C10-S	2.65	1.81	1.77
6	A	681	5TR	C30-C32	2.77	1.57	1.51
6	A	681	5TR	C06-C15	3.20	1.58	1.51
6	A	681	5TR	C31-C36	3.26	1.58	1.51
2	A	602	MPG	C9-C10	3.48	1.55	1.29
2	A	605	MPG	C10-C9	3.97	1.55	1.28
2	A	623	MPG	C10-C9	3.97	1.55	1.28
2	A	622	MPG	C10-C9	3.97	1.55	1.28
2	A	661	MPG	C10-C9	3.97	1.55	1.28
2	A	607	MPG	C10-C9	3.97	1.55	1.28
2	A	624	MPG	C10-C9	3.98	1.55	1.28
2	A	616	MPG	C10-C9	3.98	1.55	1.28

Continued on next page...

Continued from previous page...

Mol	Chain	Res	Type	Atoms	Z	Observed(Å)	Ideal(Å)
2	A	615	MPG	C10-C9	3.98	1.55	1.28
2	A	612	MPG	C10-C9	4.26	1.55	1.31
2	A	676	MPG	C10-C9	4.27	1.55	1.31
2	A	666	MPG	C10-C9	4.28	1.55	1.31
2	A	601	MPG	C10-C9	4.28	1.55	1.31
2	A	617	MPG	C10-C9	4.30	1.55	1.31

All (37) bond angle outliers are listed below:

Mol	Chain	Res	Type	Atoms	Z	Observed(°)	Ideal(°)
6	A	681	5TR	C45-C46-C36	-3.21	119.61	127.68
6	A	681	5TR	C11-C25-C18	-3.08	119.95	127.68
6	A	681	5TR	C19-C27-C20	-2.97	120.21	127.68
6	A	681	5TR	C29-C34-C26	-2.89	120.41	127.68
6	A	681	5TR	C21-C33-C32	-2.86	120.49	127.68
6	A	681	5TR	C13-C28-C22	-2.82	120.60	127.68
6	A	681	5TR	C10-C23-C14	-2.80	120.65	127.68
6	A	681	5TR	C58-C56-C52	-2.79	120.81	125.96
6	A	681	5TR	C12-C24-C15	-2.75	120.77	127.68
6	A	681	5TR	C35-C42-C44	-2.64	121.04	127.68
2	A	602	MPG	C8-C9-C10	-2.34	112.00	131.33
2	A	623	MPG	C8-C9-C10	-2.26	111.59	126.70
2	A	605	MPG	C8-C9-C10	-2.23	111.83	126.70
2	A	607	MPG	C8-C9-C10	-2.21	111.92	126.70
2	A	661	MPG	C8-C9-C10	-2.19	112.09	126.70
2	A	616	MPG	C8-C9-C10	-2.19	112.10	126.70
2	A	624	MPG	C8-C9-C10	-2.18	112.14	126.70
2	A	622	MPG	C8-C9-C10	-2.16	112.30	126.70
2	A	615	MPG	C8-C9-C10	-2.15	112.36	126.70
6	A	681	5TR	C59-C57-C60	2.05	119.38	114.60
3	A	677	EPE	C6-N1-C2	2.24	113.95	108.87
6	A	681	5TR	C41-C22-C16	2.56	119.73	115.29
6	A	681	5TR	C38-C15-C06	2.59	119.78	115.29
6	A	681	5TR	C43-C26-C17	2.64	119.87	115.29
6	A	681	5TR	C40-C20-C08	2.65	119.89	115.29
6	A	681	5TR	C37-C14-C07	2.68	119.94	115.29
6	A	681	5TR	C50-C36-C31	2.71	120.00	115.29
6	A	681	5TR	C55-C52-C49	2.74	120.05	115.29
6	A	681	5TR	C39-C18-C09	2.83	120.19	115.29
6	A	681	5TR	C48-C32-C30	2.85	120.22	115.29
3	A	677	EPE	O3S-S-C10	2.88	109.59	106.06
6	A	681	5TR	C53-C44-C47	2.88	120.28	115.29

Continued on next page...

Continued from previous page...

Mol	Chain	Res	Type	Atoms	Z	Observed(°)	Ideal(°)
3	A	677	EPE	O1S-S-C10	2.96	109.33	106.79
3	A	677	EPE	O2S-S-C10	3.07	109.43	106.79
3	A	677	EPE	C7-N4-C5	3.57	120.42	111.26
3	A	677	EPE	C7-N4-C3	3.61	120.52	111.26
3	A	677	EPE	C5-N4-C3	3.89	117.69	108.87

There are no chirality outliers.

There are no torsion outliers.

There are no ring outliers.

24 monomers are involved in 29 short contacts:

Mol	Chain	Res	Type	Clashes	Symm-Clashes
2	A	601	MPG	1	0
2	A	602	MPG	1	0
2	A	605	MPG	1	0
2	A	607	MPG	1	0
2	A	608	MPG	1	0
2	A	610	MPG	1	0
2	A	611	MPG	1	0
2	A	612	MPG	1	0
2	A	621	MPG	1	0
2	A	623	MPG	1	0
2	A	634	MPG	1	0
2	A	635	MPG	1	0
2	A	638	MPG	1	0
2	A	640	MPG	1	0
2	A	642	MPG	1	0
2	A	648	MPG	1	0
2	A	650	MPG	1	0
2	A	651	MPG	1	0
2	A	652	MPG	1	0
2	A	653	MPG	1	0
2	A	654	MPG	1	0
2	A	659	MPG	1	0
2	A	676	MPG	1	0
6	A	681	5TR	11	0

5.7 Other polymers

There are no such residues in this entry.

5.8 Polymer linkage issues ⓘ

There are no chain breaks in this entry.

6 Fit of model and data [i](#)

6.1 Protein, DNA and RNA chains [i](#)

In the following table, the column labelled ‘#RSRZ> 2’ contains the number (and percentage) of RSRZ outliers, followed by percent RSRZ outliers for the chain as percentile scores relative to all X-ray entries and entries of similar resolution. The OWAB column contains the minimum, median, 95th percentile and maximum values of the occupancy-weighted average B-factor per residue. The column labelled ‘Q< 0.9’ lists the number of (and percentage) of residues with an average occupancy less than 0.9.

Mol	Chain	Analysed	<RSRZ>	#RSRZ>2	OWAB(Å ²)	Q<0.9
1	A	541/578 (93%)	-0.30	2 (0%) 92 89	34, 46, 74, 132	0

All (2) RSRZ outliers are listed below:

Mol	Chain	Res	Type	RSRZ
1	A	472	GLN	2.9
1	A	575	GLN	2.4

6.2 Non-standard residues in protein, DNA, RNA chains [i](#)

There are no non-standard protein/DNA/RNA residues in this entry.

6.3 Carbohydrates [i](#)

There are no carbohydrates in this entry.

6.4 Ligands [i](#)

In the following table, the Atoms column lists the number of modelled atoms in the group and the number defined in the chemical component dictionary. LLDF column lists the quality of electron density of the group with respect to its neighbouring residues in protein, DNA or RNA chains. The B-factors column lists the minimum, median, 95th percentile and maximum values of B factors of atoms in the group. The column labelled ‘Q< 0.9’ lists the number of atoms with occupancy less than 0.9.

Mol	Type	Chain	Res	Atoms	RSCC	RSR	LLDF	B-factors(Å ²)	Q<0.9
2	MPG	A	624	10/25	0.64	0.57	19.03	80,82,83,83	0
2	MPG	A	626	6/25	0.92	0.28	13.58	57,57,58,59	0
2	MPG	A	618	7/25	0.72	0.36	9.97	44,45,47,47	0

Continued on next page...

Continued from previous page...

Mol	Type	Chain	Res	Atoms	RSCC	RSR	LLDF	B-factors(\AA^2)	Q<0.9
2	MPG	A	632	7/25	0.78	0.39	9.34	49,51,52,53	0
2	MPG	A	607	10/25	0.73	0.38	6.72	39,43,51,52	0
2	MPG	A	620	5/25	0.86	0.29	6.18	46,46,47,47	0
2	MPG	A	647	7/25	0.82	0.34	4.93	72,72,73,74	0
2	MPG	A	616	10/25	0.85	0.28	4.89	53,55,57,58	0
2	MPG	A	661	10/25	0.73	0.38	4.75	71,71,72,72	0
6	5TR	A	681	60/60	0.79	0.35	4.45	46,60,90,92	0
2	MPG	A	608	6/25	0.88	0.32	4.35	39,40,40,42	0
2	MPG	A	605	10/25	0.84	0.29	3.79	29,31,34,34	0
2	MPG	A	623	10/25	0.91	0.26	3.63	32,36,38,38	0
2	MPG	A	636	6/25	0.84	0.28	3.56	43,44,46,47	0
2	MPG	A	604	9/25	0.85	0.25	3.50	40,42,43,43	0
2	MPG	A	635	7/25	0.90	0.23	3.21	68,68,69,69	0
3	EPE	A	677	15/15	0.82	0.26	3.19	112,115,116,117	0
2	MPG	A	621	5/25	0.89	0.24	3.15	66,66,67,68	0
2	MPG	A	617	14/25	0.86	0.25	3.07	50,60,61,62	0
2	MPG	A	631	5/25	0.91	0.31	2.84	50,50,50,51	0
5	CL	A	680	1/1	0.87	0.25	2.77	55,55,55,55	0
2	MPG	A	602	11/25	0.91	0.27	2.46	23,27,34,35	0
2	MPG	A	641	6/25	0.88	0.25	2.45	41,42,44,45	0
2	MPG	A	603	9/25	0.89	0.26	2.15	18,22,23,24	0
2	MPG	A	650	6/25	0.73	0.27	2.10	58,59,61,61	0
2	MPG	A	622	10/25	0.84	0.23	1.57	39,44,48,49	0
2	MPG	A	642	5/25	0.75	0.24	1.50	52,52,54,55	0
2	MPG	A	619	6/25	0.91	0.23	1.12	30,31,31,32	0
2	MPG	A	615	10/25	0.86	0.24	1.09	33,38,41,42	0
2	MPG	A	638	7/25	0.85	0.24	1.07	42,44,47,47	0
2	MPG	A	612	18/25	0.82	0.27	0.99	40,43,55,56	0
4	PO4	A	678	5/5	0.80	0.21	0.69	113,113,113,114	0
2	MPG	A	613	6/25	0.94	0.16	-1.19	27,30,31,32	0
2	MPG	A	657	5/25	0.84	0.37	-	86,86,86,86	0
2	MPG	A	609	6/25	0.85	0.23	-	48,48,49,49	0
2	MPG	A	637	6/25	0.85	0.34	-	68,68,70,71	0
2	MPG	A	654	6/25	0.87	0.22	-	46,48,49,49	0
2	MPG	A	664	6/25	0.57	0.48	-	62,63,64,64	0
2	MPG	A	645	7/25	0.57	0.54	-	72,72,73,73	0
2	MPG	A	663	4/25	0.75	0.35	-	58,58,58,58	0
2	MPG	A	671	8/25	0.85	0.27	-	63,64,64,65	0
2	MPG	A	662	7/25	0.89	0.24	-	57,58,60,61	0
2	MPG	A	625	7/25	0.88	0.25	-	50,50,51,52	0
2	MPG	A	655	7/25	0.73	0.33	-	58,59,61,62	0

Continued on next page...

Continued from previous page...

Mol	Type	Chain	Res	Atoms	RSCC	RSR	LLDF	B-factors(\AA^2)	Q<0.9
2	MPG	A	651	6/25	0.77	0.32	-	55,55,55,55	0
2	MPG	A	644	8/25	0.70	0.37	-	61,62,63,64	0
2	MPG	A	630	5/25	0.58	0.45	-	64,65,67,68	0
2	MPG	A	656	6/25	0.73	0.32	-	38,39,39,39	0
2	MPG	A	611	6/25	0.83	0.30	-	38,41,42,42	0
2	MPG	A	672	6/25	0.81	0.35	-	57,58,61,63	0
2	MPG	A	666	16/25	0.81	0.45	-	58,62,68,69	0
2	MPG	A	601	13/25	0.59	0.37	-	64,68,68,69	0
2	MPG	A	660	4/25	0.78	0.38	-	52,52,52,53	0
2	MPG	A	639	7/25	0.72	0.37	-	60,62,62,62	0
2	MPG	A	668	3/25	0.77	0.44	-	64,64,65,65	0
2	MPG	A	606	4/25	0.84	0.26	-	53,53,54,55	0
5	CL	A	679	1/1	0.83	0.20	-	90,90,90,90	0
2	MPG	A	673	3/25	0.92	0.20	-	71,71,72,72	0
2	MPG	A	675	5/25	0.71	0.34	-	74,74,74,75	0
2	MPG	A	653	8/25	0.71	0.35	-	61,64,67,68	0
2	MPG	A	629	5/25	0.92	0.32	-	36,36,38,39	0
2	MPG	A	633	5/25	0.90	0.24	-	44,44,45,45	0
2	MPG	A	634	7/25	0.68	0.35	-	50,50,52,53	0
2	MPG	A	610	8/25	0.88	0.31	-	51,52,53,54	0
2	MPG	A	649	6/25	0.85	0.21	-	61,61,63,63	0
2	MPG	A	614	5/25	0.78	0.37	-	44,45,49,49	0
2	MPG	A	628	6/25	0.89	0.41	-	52,53,53,54	0
2	MPG	A	646	4/25	0.84	0.28	-	61,61,61,61	0
2	MPG	A	665	8/25	0.68	0.45	-	77,78,78,78	0
2	MPG	A	670	6/25	0.72	0.65	-	40,41,42,42	0
2	MPG	A	669	6/25	0.73	0.45	-	56,57,59,59	0
2	MPG	A	659	6/25	0.68	0.40	-	60,61,62,63	0
2	MPG	A	648	8/25	0.76	0.38	-	63,66,70,71	0
2	MPG	A	658	7/25	0.73	0.41	-	49,50,55,56	0
2	MPG	A	640	6/25	0.86	0.40	-	33,36,39,39	0
2	MPG	A	627	6/25	0.86	0.32	-	43,44,45,45	0
2	MPG	A	676	14/25	0.56	0.28	-	81,83,83,83	0
2	MPG	A	643	6/25	0.90	0.21	-	45,45,46,47	0
2	MPG	A	667	7/25	0.85	0.28	-	51,51,53,53	0
2	MPG	A	652	6/25	0.84	0.16	-	35,36,36,37	0
2	MPG	A	674	6/25	0.38	0.31	-	80,80,81,81	0

6.5 Other polymers ⓘ

There are no such residues in this entry.