



Full wwPDB X-ray Structure Validation Report ⓘ

Sep 16, 2017 – 09:26 PM EDT

PDB ID : 5F19
Title : The Crystal Structure of Aspirin Acetylated Human Cyclooxygenase-2
Authors : Lucido, M.J.; Orlando, B.J.; Malkowski, M.G.
Deposited on : unknown
Resolution : 2.04 Å(reported)

This is a Full wwPDB X-ray Structure Validation Report for a publicly released PDB entry.

We welcome your comments at validation@mail.wwpdb.org

A user guide is available at

<http://wwpdb.org/validation/2016/XrayValidationReportHelp>

with specific help available everywhere you see the ⓘ symbol.

The following versions of software and data (see [references ⓘ](#)) were used in the production of this report:

MolProbity : 4.02b-467
Mogul : 1.7.2 (RC1), CSD as538be (2017)
Xtriage (Phenix) : 1.9-1692
EDS : rb-20029824
Percentile statistics : 20161228.v01 (using entries in the PDB archive December 28th 2016)
Refmac : 5.8.0135
CCP4 : 6.5.0
Ideal geometry (proteins) : Engh & Huber (2001)
Ideal geometry (DNA, RNA) : Parkinson et al. (1996)
Validation Pipeline (wwPDB-VP) : rb-20029824

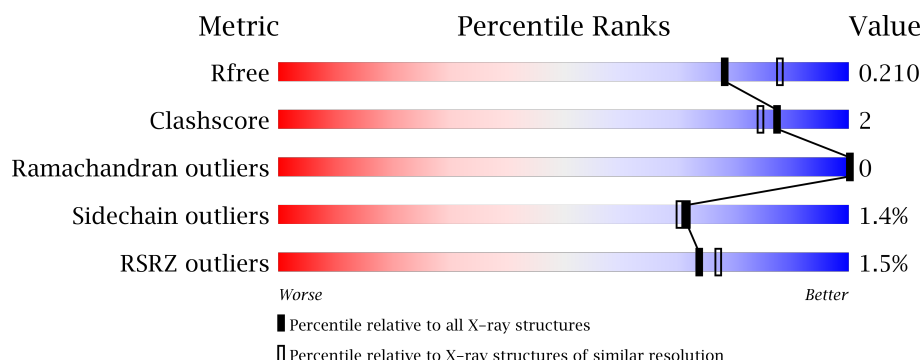
1 Overall quality at a glance

The following experimental techniques were used to determine the structure:

X-RAY DIFFRACTION

The reported resolution of this entry is 2.04 Å.

Percentile scores (ranging between 0-100) for global validation metrics of the entry are shown in the following graphic. The table shows the number of entries on which the scores are based.



Metric	Whole archive (#Entries)	Similar resolution (#Entries, resolution range(Å))
R_{free}	100719	1316 (2.04-2.04)
Clashscore	112137	1394 (2.04-2.04)
Ramachandran outliers	110173	1383 (2.04-2.04)
Sidechain outliers	110143	1383 (2.04-2.04)
RSRZ outliers	101464	1319 (2.04-2.04)

The table below summarises the geometric issues observed across the polymeric chains and their fit to the electron density. The red, orange, yellow and green segments on the lower bar indicate the fraction of residues that contain outliers for ≥ 3 , 2, 1 and 0 types of geometric quality criteria. A grey segment represents the fraction of residues that are not modelled. The numeric value for each fraction is indicated below the corresponding segment, with a dot representing fractions $\leq 5\%$. The upper red bar (where present) indicates the fraction of residues that have poor fit to the electron density. The numeric value is given above the bar.

Mol	Chain	Length	Quality of chain
1	A	552	<div> <div>2%</div> <div> <div></div> <div>95%</div> <div>5%</div> </div> </div>
1	B	552	<div> <div>%</div> <div> <div></div> <div>93%</div> <div>7%</div> </div> </div>

The following table lists non-polymeric compounds, carbohydrate monomers and non-standard residues in protein, DNA, RNA chains that are outliers for geometric or electron-density-fit criteria:

Mol	Type	Chain	Res	Chirality	Geometry	Clashes	Electron density
2	COH	A	601	-	-	-	X
2	COH	B	601	-	-	-	X
3	NAG	B	602	-	-	-	X
3	NAG	B	607	-	-	-	X
5	AKR	A	608	-	-	-	X
6	EDO	A	610	-	-	-	X
6	EDO	A	611	-	-	-	X
6	EDO	A	612	-	-	-	X
6	EDO	A	613	-	-	-	X
6	EDO	A	615	-	-	-	X
6	EDO	B	610	-	-	-	X
6	EDO	B	611	-	-	-	X
6	EDO	B	617	-	-	-	X

2 Entry composition [i](#)

There are 8 unique types of molecules in this entry. The entry contains 9982 atoms, of which 0 are hydrogens and 0 are deuteriums.

In the tables below, the ZeroOcc column contains the number of atoms modelled with zero occupancy, the AltConf column contains the number of residues with at least one atom in alternate conformation and the Trace column contains the number of residues modelled with at most 2 atoms.

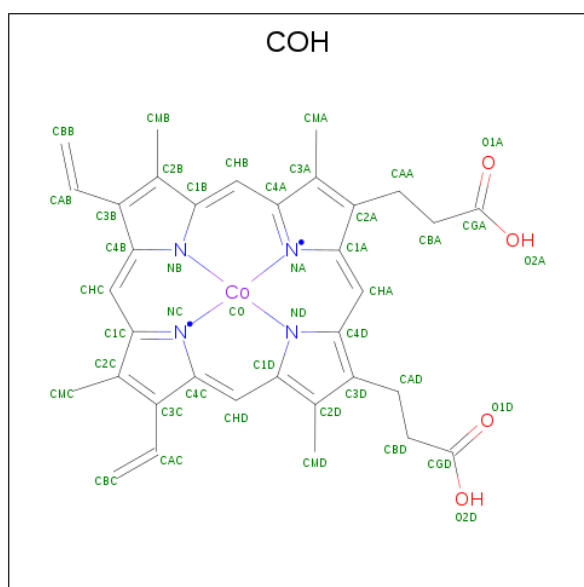
- Molecule 1 is a protein called Prostaglandin G/H synthase 2.

Mol	Chain	Residues	Atoms					ZeroOcc	AltConf	Trace
1	A	552	Total	C	N	O	S	3	2	0
			4464	2880	755	803	26			
1	B	552	Total	C	N	O	S	0	2	0
			4483	2896	759	802	26			

There are 2 discrepancies between the modelled and reference sequences:

Chain	Residue	Modelled	Actual	Comment	Reference
A	33	LYS	-	expression tag	UNP P35354
B	33	LYS	-	expression tag	UNP P35354

- Molecule 2 is PROTOPORPHYRIN IX CONTAINING CO (three-letter code: COH) (formula: $C_{34}H_{32}CoN_4O_4$).



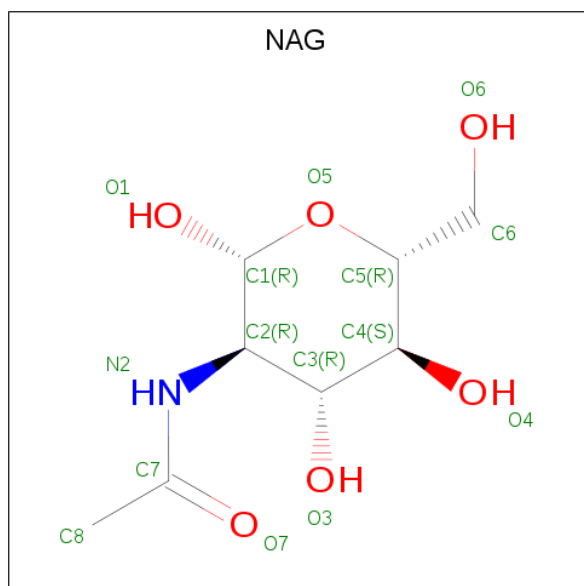
Mol	Chain	Residues	Atoms					ZeroOcc	AltConf
2	A	1	Total	C	Co	N	O	0	0
			43	34	1	4	4		

Continued on next page...

Continued from previous page...

Mol	Chain	Residues	Atoms					ZeroOcc	AltConf
2	B	1	Total	C	Co	N	O	0	0
			43	34	1	4	4		

- Molecule 3 is N-ACETYL-D-GLUCOSAMINE (three-letter code: NAG) (formula: $C_8H_{15}NO_6$).



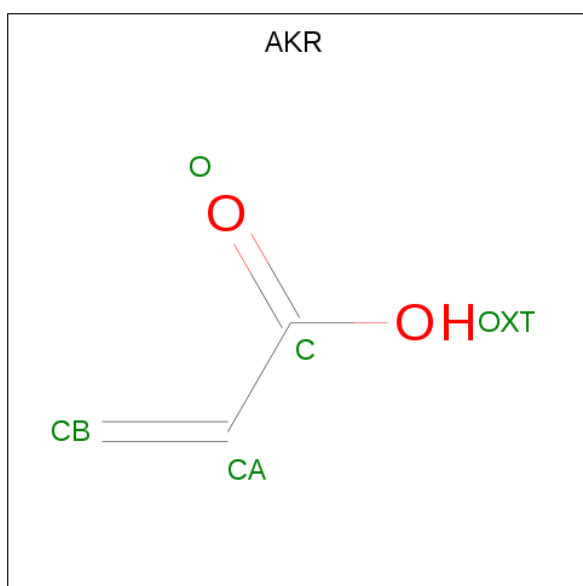
Mol	Chain	Residues	Atoms				ZeroOcc	AltConf
3	A	1	Total	C	N	O	0	0
			14	8	1	5		
3	A	1	Total	C	N	O	0	0
			14	8	1	5		
3	A	1	Total	C	N	O	0	0
			14	8	1	5		
3	A	1	Total	C	N	O	0	0
			14	8	1	5		
3	B	1	Total	C	N	O	0	0
			14	8	1	5		
3	B	1	Total	C	N	O	0	0
			14	8	1	5		
3	B	1	Total	C	N	O	0	0
			14	8	1	5		
3	B	1	Total	C	N	O	0	0
			14	8	1	5		

- Molecule 4 is ALPHA-D-MANNOSE (three-letter code: MAN) (formula: $C_6H_{12}O_6$).



Mol	Chain	Residues	Atoms			ZeroOcc	AltConf
4	A	1	Total	C	O	0	0
			11	6	5		
4	B	1	Total	C	O	0	0
			11	6	5		

- Molecule 5 is ACRYLIC ACID (three-letter code: AKR) (formula: $C_3H_4O_2$).



Mol	Chain	Residues	Atoms			ZeroOcc	AltConf
5	A	1	Total	C	O	0	0
			5	3	2		
5	A	1	Total	C	O	0	0
			5	3	2		

Continued on next page...

Continued from previous page...

Mol	Chain	Residues	Atoms			ZeroOcc	AltConf
5	B	1	Total	C	O	0	0
			5	3	2		
5	B	1	Total	C	O	0	0
			5	3	2		

- Molecule 6 is 1,2-ETHANEDIOL (three-letter code: EDO) (formula: $C_2H_6O_2$).



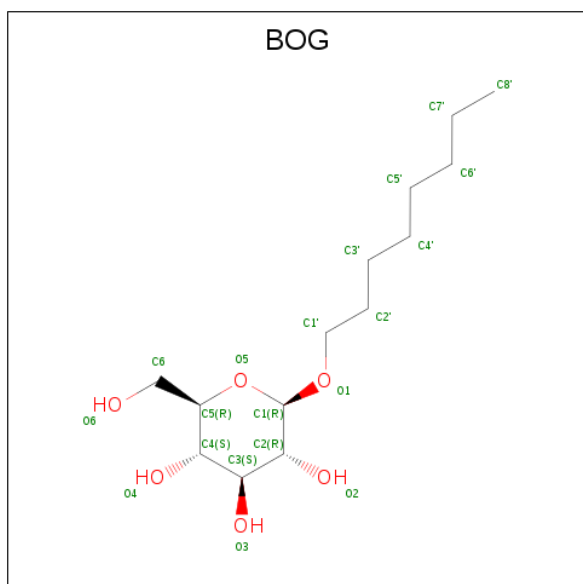
Mol	Chain	Residues	Atoms			ZeroOcc	AltConf
6	A	1	Total	C	O	0	0
			4	2	2		
6	A	1	Total	C	O	0	0
			4	2	2		
6	A	1	Total	C	O	0	0
			4	2	2		
6	A	1	Total	C	O	0	0
			4	2	2		
6	A	1	Total	C	O	0	0
			4	2	2		
6	B	1	Total	C	O	0	0
			4	2	2		
6	B	1	Total	C	O	0	0
			4	2	2		

Continued on next page...

Continued from previous page...

Mol	Chain	Residues	Atoms			ZeroOcc	AltConf
6	B	1	Total	C	O	0	0
			4	2	2		
6	B	1	Total	C	O	0	0
			4	2	2		
6	B	1	Total	C	O	0	0
			4	2	2		
6	B	1	Total	C	O	0	0
			4	2	2		
6	B	1	Total	C	O	0	0
			4	2	2		

- Molecule 7 is B-OCTYLGLUCOSIDE (three-letter code: BOG) (formula: $C_{14}H_{28}O_6$).



Mol	Chain	Residues	Atoms			ZeroOcc	AltConf
7	B	1	Total	C	O	0	0
			20	14	6		

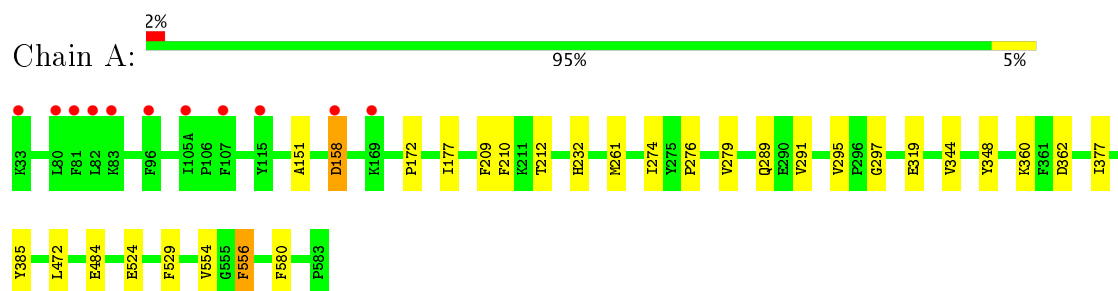
- Molecule 8 is water.

Mol	Chain	Residues	Atoms		ZeroOcc	AltConf
8	A	351	Total	O	0	0
			351	351		
8	B	350	Total	O	0	0
			350	350		

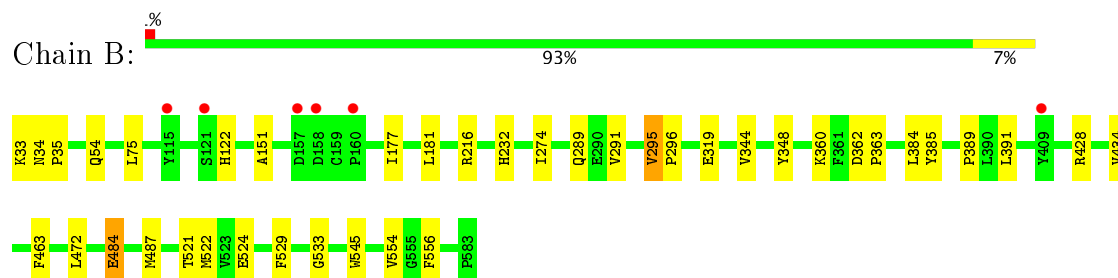
3 Residue-property plots [i](#)

These plots are drawn for all protein, RNA and DNA chains in the entry. The first graphic for a chain summarises the proportions of the various outlier classes displayed in the second graphic. The second graphic shows the sequence view annotated by issues in geometry and electron density. Residues are color-coded according to the number of geometric quality criteria for which they contain at least one outlier: green = 0, yellow = 1, orange = 2 and red = 3 or more. A red dot above a residue indicates a poor fit to the electron density ($RSRZ > 2$). Stretches of 2 or more consecutive residues without any outlier are shown as a green connector. Residues present in the sample, but not in the model, are shown in grey.

- Molecule 1: Prostaglandin G/H synthase 2



- Molecule 1: Prostaglandin G/H synthase 2



4 Data and refinement statistics

Property	Value	Source
Space group	I 2 2 2	Depositor
Cell constants a, b, c, α , β , γ	114.20 Å 130.13 Å 178.03 Å 90.00° 90.00° 90.00°	Depositor
Resolution (Å)	53.88 – 2.04 53.88 – 2.04	Depositor EDS
% Data completeness (in resolution range)	94.1 (53.88-2.04) 94.1 (53.88-2.04)	Depositor EDS
R_{merge}	0.09	Depositor
R_{sym}	(Not available)	Depositor
$\langle I/\sigma(I) \rangle$ ¹	2.24 (at 2.05 Å)	Xtriage
Refinement program	PHENIX 1.9-1692	Depositor
R, R_{free}	0.168 , 0.207 0.173 , 0.210	Depositor DCC
R_{free} test set	7862 reflections (11.00%)	DCC
Wilson B-factor (Å ²)	23.6	Xtriage
Anisotropy	0.288	Xtriage
Bulk solvent k_{sol} (e/Å ³), B_{sol} (Å ²)	0.36 , 64.1	EDS
L-test for twinning ²	$\langle L \rangle = 0.46$, $\langle L^2 \rangle = 0.28$	Xtriage
Estimated twinning fraction	No twinning to report.	Xtriage
F_o, F_c correlation	0.95	EDS
Total number of atoms	9982	wwPDB-VP
Average B, all atoms (Å ²)	31.0	wwPDB-VP

Xtriage's analysis on translational NCS is as follows: *The largest off-origin peak in the Patterson function is 3.33% of the height of the origin peak. No significant pseudotranslation is detected.*

¹Intensities estimated from amplitudes.

²Theoretical values of $\langle |L| \rangle$, $\langle L^2 \rangle$ for acentric reflections are 0.5, 0.333 respectively for untwinned datasets, and 0.375, 0.2 for perfectly twinned datasets.

5 Model quality

5.1 Standard geometry

Bond lengths and bond angles in the following residue types are not validated in this section: NAG, AKR, EDO, OAS, COH, BOG, MAN

The Z score for a bond length (or angle) is the number of standard deviations the observed value is removed from the expected value. A bond length (or angle) with $|Z| > 5$ is considered an outlier worth inspection. RMSZ is the root-mean-square of all Z scores of the bond lengths (or angles).

Mol	Chain	Bond lengths		Bond angles	
		RMSZ	$\# Z > 5$	RMSZ	$\# Z > 5$
1	A	0.23	0/4591	0.39	0/6228
1	B	0.23	0/4609	0.39	0/6249
All	All	0.23	0/9200	0.39	0/12477

There are no bond length outliers.

There are no bond angle outliers.

There are no chirality outliers.

There are no planarity outliers.

5.2 Too-close contacts

In the following table, the Non-H and H(model) columns list the number of non-hydrogen atoms and hydrogen atoms in the chain respectively. The H(added) column lists the number of hydrogen atoms added and optimized by MolProbity. The Clashes column lists the number of clashes within the asymmetric unit, whereas Symm-Clashes lists symmetry related clashes.

Mol	Chain	Non-H	H(model)	H(added)	Clashes	Symm-Clashes
1	A	4464	0	4338	17	0
1	B	4483	0	4368	20	0
2	A	43	0	30	6	0
2	B	43	0	30	3	0
3	A	56	0	50	0	0
3	B	70	0	62	2	0
4	A	11	0	10	0	0
4	B	11	0	10	0	0
5	A	10	0	6	0	0
5	B	10	0	6	0	0
6	A	28	0	42	2	0

Continued on next page...

Continued from previous page...

Mol	Chain	Non-H	H(model)	H(added)	Clashes	Symm-Clashes
6	B	32	0	48	1	0
7	B	20	0	28	0	0
8	A	351	0	0	0	0
8	B	350	0	0	2	0
All	All	9982	0	9028	43	0

The all-atom clashscore is defined as the number of clashes found per 1000 atoms (including hydrogen atoms). The all-atom clashscore for this structure is 2.

All (43) close contacts within the same asymmetric unit are listed below, sorted by their clash magnitude.

Atom-1	Atom-2	Interatomic distance (Å)	Clash overlap (Å)
1:A:212:THR:OG1	2:A:601:COH:O2D	1.64	1.13
2:A:601:COH:HMC1	2:A:601:COH:HBC1	1.71	0.73
2:B:601:COH:HBB1	2:B:601:COH:HMB1	1.70	0.72
1:A:580:PHE:HB2	6:A:610:EDO:H21	1.76	0.67
1:A:319:GLU:HG3	1:A:554:VAL:HG11	1.77	0.66
1:A:274:ILE:HD12	1:A:291:VAL:HG12	1.79	0.64
1:B:274:ILE:HD12	1:B:291:VAL:HG12	1.80	0.64
1:B:54:GLN:NE2	8:B:704:HOH:O	2.31	0.62
2:B:601:COH:HBC1	2:B:601:COH:HHD	1.82	0.60
2:A:601:COH:HHC	2:A:601:COH:HBB1	1.83	0.60
1:B:391:LEU:HD21	2:B:601:COH:HHC	1.87	0.56
1:B:177:ILE:HG23	1:B:181:LEU:HD12	1.91	0.53
1:A:172:PRO:HG2	1:A:177:ILE:HD11	1.90	0.53
1:B:319:GLU:HG2	1:B:554:VAL:HG11	1.92	0.51
1:A:212:THR:CB	2:A:601:COH:O2D	2.57	0.51
1:A:158:ASP:OD1	1:A:158:ASP:N	2.42	0.50
1:B:472:LEU:HD11	1:B:524:GLU:HB2	1.94	0.50
3:B:607:NAG:H3	3:B:607:NAG:H83	1.95	0.49
1:B:533:GLY:HA3	6:B:611:EDO:H21	1.95	0.48
1:B:360:LYS:HE2	1:B:362:ASP:HB2	1.95	0.48
1:A:151:ALA:HB2	1:A:529:PHE:HZ	1.79	0.48
1:A:261:MET:HE1	6:A:615:EDO:H21	1.98	0.46
2:A:601:COH:HA	2:A:601:COH:O1A	2.16	0.46
1:B:428:ARG:NE	8:B:723:HOH:O	2.47	0.46
1:A:472:LEU:HD11	1:A:524:GLU:HB2	1.99	0.44
1:B:484:GLU:CD	1:B:487:MET:H	2.22	0.43
1:A:360:LYS:HE2	1:A:362:ASP:HB2	2.00	0.43
1:B:295:VAL:HA	1:B:296:PRO:HD3	1.88	0.43
1:A:209:PHE:HB2	1:A:377:ILE:HG13	2.00	0.43

Continued on next page...

Continued from previous page...

Atom-1	Atom-2	Interatomic distance (Å)	Clash overlap (Å)
1:B:151:ALA:HB2	1:B:529:PHE:HZ	1.84	0.43
1:B:384:LEU:HG	1:B:522:MET:SD	2.59	0.43
1:B:344:VAL:O	1:B:348:TYR:HB3	2.19	0.43
1:B:463:PHE:CE1	1:B:521:THR:HG21	2.55	0.42
1:B:363:PRO:HG2	1:B:545:TRP:CD2	2.55	0.42
1:B:33:LYS:HB3	1:B:33:LYS:HE2	1.93	0.42
1:B:34:ASN:HA	1:B:35:PRO:HD3	1.90	0.42
1:A:210:PHE:HB3	2:A:601:COH:HBD1	2.02	0.41
1:B:216:ARG:HG2	3:B:606:NAG:H81	2.02	0.41
1:A:276:PRO:HG2	1:A:279:VAL:HG23	2.02	0.41
1:A:556:PHE:HD1	1:A:556:PHE:HA	1.68	0.41
1:A:344:VAL:O	1:A:348:TYR:HB3	2.21	0.41
1:A:295:VAL:HG12	1:A:297:GLY:H	1.87	0.40
1:B:389:PRO:HB2	1:B:434:VAL:HA	2.02	0.40

There are no symmetry-related clashes.

5.3 Torsion angles [i](#)

5.3.1 Protein backbone [i](#)

In the following table, the Percentiles column shows the percent Ramachandran outliers of the chain as a percentile score with respect to all X-ray entries followed by that with respect to entries of similar resolution.

The Analysed column shows the number of residues for which the backbone conformation was analysed, and the total number of residues.

Mol	Chain	Analysed	Favoured	Allowed	Outliers	Percentiles	
1	A	552/552 (100%)	536 (97%)	16 (3%)	0	100	100
1	B	551/552 (100%)	540 (98%)	11 (2%)	0	100	100
All	All	1103/1104 (100%)	1076 (98%)	27 (2%)	0	100	100

There are no Ramachandran outliers to report.

5.3.2 Protein sidechains [i](#)

In the following table, the Percentiles column shows the percent sidechain outliers of the chain as a percentile score with respect to all X-ray entries followed by that with respect to entries of similar resolution.

The Analysed column shows the number of residues for which the sidechain conformation was analysed, and the total number of residues.

Mol	Chain	Analysed	Rotameric	Outliers	Percentiles	
1	A	484/490 (99%)	478 (99%)	6 (1%)	75	74
1	B	487/490 (99%)	479 (98%)	8 (2%)	68	65
All	All	971/980 (99%)	957 (99%)	14 (1%)	71	70

All (14) residues with a non-rotameric sidechain are listed below:

Mol	Chain	Res	Type
1	A	158	ASP
1	A	232	HIS
1	A	289	GLN
1	A	385	TYR
1	A	484	GLU
1	A	556	PHE
1	B	75	LEU
1	B	122	HIS
1	B	232	HIS
1	B	289	GLN
1	B	295	VAL
1	B	385	TYR
1	B	484	GLU
1	B	556	PHE

Some sidechains can be flipped to improve hydrogen bonding and reduce clashes. There are no such sidechains identified.

5.3.3 RNA ⓘ

There are no RNA molecules in this entry.

5.4 Non-standard residues in protein, DNA, RNA chains ⓘ

2 non-standard protein/DNA/RNA residues are modelled in this entry.

In the following table, the Counts columns list the number of bonds (or angles) for which Mogul statistics could be retrieved, the number of bonds (or angles) that are observed in the model and the number of bonds (or angles) that are defined in the chemical component dictionary. The Link column lists molecule types, if any, to which the group is linked. The Z score for a bond length (or angle) is the number of standard deviations the observed value is removed from the expected

value. A bond length (or angle) with $|Z| > 2$ is considered an outlier worth inspection. RMSZ is the root-mean-square of all Z scores of the bond lengths (or angles).

Mol	Type	Chain	Res	Link	Bond lengths			Bond angles		
					Counts	RMSZ	$\# Z > 2$	Counts	RMSZ	$\# Z > 2$
1	OAS	A	530	1	8,8,9	1.00	0	6,9,11	0.66	0
1	OAS	B	530	1	8,8,9	0.98	0	6,9,11	0.68	0

In the following table, the Chirals column lists the number of chiral outliers, the number of chiral centers analysed, the number of these observed in the model and the number defined in the chemical component dictionary. Similar counts are reported in the Torsion and Rings columns. '-' means no outliers of that kind were identified.

Mol	Type	Chain	Res	Link	Chirals	Torsions	Rings
1	OAS	A	530	1	-	0/5/7/9	0/0/0/0
1	OAS	B	530	1	-	0/5/7/9	0/0/0/0

There are no bond length outliers.

There are no bond angle outliers.

There are no chirality outliers.

There are no torsion outliers.

There are no ring outliers.

No monomer is involved in short contacts.

5.5 Carbohydrates [i](#)

There are no carbohydrates in this entry.

5.6 Ligand geometry [i](#)

33 ligands are modelled in this entry.

In the following table, the Counts columns list the number of bonds (or angles) for which Mogul statistics could be retrieved, the number of bonds (or angles) that are observed in the model and the number of bonds (or angles) that are defined in the chemical component dictionary. The Link column lists molecule types, if any, to which the group is linked. The Z score for a bond length (or angle) is the number of standard deviations the observed value is removed from the expected value. A bond length (or angle) with $|Z| > 2$ is considered an outlier worth inspection. RMSZ is the root-mean-square of all Z scores of the bond lengths (or angles).

Mol	Type	Chain	Res	Link	Bond lengths			Bond angles		
					Counts	RMSZ	# Z > 2	Counts	RMSZ	# Z > 2
2	COH	A	601	1	28,50,50	4.50	20 (71%)	21,82,82	4.79	6 (28%)
3	NAG	A	602	1	14,14,15	0.31	0	15,19,21	0.45	0
3	NAG	A	603	1,3	14,14,15	0.33	0	15,19,21	0.50	0
3	NAG	A	604	3,4	14,14,15	0.42	0	15,19,21	0.58	0
4	MAN	A	605	3	11,11,12	0.88	1 (9%)	13,15,17	0.96	1 (7%)
3	NAG	A	606	1	14,14,15	0.19	0	15,19,21	0.43	0
5	AKR	A	607	-	1,4,4	0.51	0	0,4,4	0.00	-
5	AKR	A	608	-	1,4,4	0.52	0	0,4,4	0.00	-
6	EDO	A	609	-	3,3,3	0.46	0	2,2,2	0.35	0
6	EDO	A	610	-	3,3,3	0.46	0	2,2,2	0.34	0
6	EDO	A	611	-	3,3,3	0.43	0	2,2,2	0.34	0
6	EDO	A	612	-	3,3,3	0.44	0	2,2,2	0.39	0
6	EDO	A	613	-	3,3,3	0.45	0	2,2,2	0.39	0
6	EDO	A	614	-	3,3,3	0.45	0	2,2,2	0.40	0
6	EDO	A	615	-	3,3,3	0.45	0	2,2,2	0.33	0
2	COH	B	601	1	28,50,50	4.47	21 (75%)	21,82,82	4.96	8 (38%)
3	NAG	B	602	1,3	14,14,15	0.31	0	15,19,21	0.50	0
3	NAG	B	603	3,4	14,14,15	0.23	0	15,19,21	0.47	0
4	MAN	B	604	3	11,11,12	0.80	0	13,15,17	1.14	2 (15%)
3	NAG	B	605	1,3	14,14,15	0.31	0	15,19,21	0.50	0
3	NAG	B	606	3	14,14,15	0.31	0	15,19,21	0.48	0
3	NAG	B	607	1	14,14,15	0.33	0	15,19,21	1.43	2 (13%)
5	AKR	B	608	-	1,4,4	0.52	0	0,4,4	0.00	-
5	AKR	B	609	-	1,4,4	0.52	0	0,4,4	0.00	-
6	EDO	B	610	-	3,3,3	0.46	0	2,2,2	0.34	0
6	EDO	B	611	-	3,3,3	0.44	0	2,2,2	0.37	0
6	EDO	B	612	-	3,3,3	0.45	0	2,2,2	0.34	0
6	EDO	B	613	-	3,3,3	0.45	0	2,2,2	0.38	0
6	EDO	B	614	-	3,3,3	0.45	0	2,2,2	0.39	0
6	EDO	B	615	-	3,3,3	0.46	0	2,2,2	0.32	0
6	EDO	B	616	-	3,3,3	0.44	0	2,2,2	0.40	0
6	EDO	B	617	-	3,3,3	0.45	0	2,2,2	0.36	0
7	BOG	B	618	-	20,20,20	0.47	0	25,25,25	0.57	0

In the following table, the Chirals column lists the number of chiral outliers, the number of chiral centers analysed, the number of these observed in the model and the number defined in the chemical component dictionary. Similar counts are reported in the Torsion and Rings columns. '-' means no outliers of that kind were identified.

Mol	Type	Chain	Res	Link	Chirals	Torsions	Rings
2	COH	A	601	1	-	0/8/94/94	0/0/8/8

Continued on next page...

Continued from previous page...

Mol	Type	Chain	Res	Link	Chirals	Torsions	Rings
3	NAG	A	602	1	-	0/6/23/26	0/1/1/1
3	NAG	A	603	1,3	-	0/6/23/26	0/1/1/1
3	NAG	A	604	3,4	-	0/6/23/26	0/1/1/1
4	MAN	A	605	3	-	0/2/19/22	1/1/1/1
3	NAG	A	606	1	-	0/6/23/26	0/1/1/1
5	AKR	A	607	-	-	0/0/2/2	0/0/0/0
5	AKR	A	608	-	-	0/0/2/2	0/0/0/0
6	EDO	A	609	-	-	0/1/1/1	0/0/0/0
6	EDO	A	610	-	-	0/1/1/1	0/0/0/0
6	EDO	A	611	-	-	0/1/1/1	0/0/0/0
6	EDO	A	612	-	-	0/1/1/1	0/0/0/0
6	EDO	A	613	-	-	0/1/1/1	0/0/0/0
6	EDO	A	614	-	-	0/1/1/1	0/0/0/0
6	EDO	A	615	-	-	0/1/1/1	0/0/0/0
2	COH	B	601	1	-	0/8/94/94	0/0/8/8
3	NAG	B	602	1,3	-	0/6/23/26	0/1/1/1
3	NAG	B	603	3,4	-	0/6/23/26	0/1/1/1
4	MAN	B	604	3	-	0/2/19/22	1/1/1/1
3	NAG	B	605	1,3	-	0/6/23/26	0/1/1/1
3	NAG	B	606	3	-	0/6/23/26	0/1/1/1
3	NAG	B	607	1	-	0/6/23/26	0/1/1/1
5	AKR	B	608	-	-	0/0/2/2	0/0/0/0
5	AKR	B	609	-	-	0/0/2/2	0/0/0/0
6	EDO	B	610	-	-	0/1/1/1	0/0/0/0
6	EDO	B	611	-	-	0/1/1/1	0/0/0/0
6	EDO	B	612	-	-	0/1/1/1	0/0/0/0
6	EDO	B	613	-	-	0/1/1/1	0/0/0/0
6	EDO	B	614	-	-	0/1/1/1	0/0/0/0
6	EDO	B	615	-	-	0/1/1/1	0/0/0/0
6	EDO	B	616	-	-	0/1/1/1	0/0/0/0
6	EDO	B	617	-	-	0/1/1/1	0/0/0/0
7	BOG	B	618	-	-	0/11/31/31	0/1/1/1

All (42) bond length outliers are listed below:

Mol	Chain	Res	Type	Atoms	Z	Observed(Å)	Ideal(Å)
2	A	601	COH	CHA-C1A	-8.09	1.37	1.53
2	B	601	COH	CHB-C4A	-7.88	1.38	1.53
2	A	601	COH	CHB-C4A	-7.88	1.38	1.53
2	B	601	COH	CHC-C1C	-7.74	1.38	1.53
2	A	601	COH	CHC-C1C	-7.64	1.38	1.53
2	B	601	COH	CHA-C1A	-7.59	1.38	1.53

Continued on next page...

Continued from previous page...

Mol	Chain	Res	Type	Atoms	Z	Observed(Å)	Ideal(Å)
2	A	601	COH	CHD-C4C	-7.48	1.39	1.53
2	B	601	COH	CHD-C4C	-7.02	1.39	1.53
2	A	601	COH	CHA-C4D	-5.76	1.37	1.51
2	B	601	COH	CHB-C1B	-5.55	1.38	1.51
2	B	601	COH	CHC-C4B	-5.49	1.38	1.51
2	A	601	COH	CHB-C1B	-5.48	1.38	1.51
2	B	601	COH	CHA-C4D	-5.45	1.38	1.51
2	A	601	COH	CHC-C4B	-5.25	1.38	1.51
2	A	601	COH	CHD-C1D	-5.22	1.38	1.51
2	B	601	COH	CHD-C1D	-4.91	1.39	1.51
2	A	601	COH	C3B-C2B	-4.71	1.34	1.40
2	B	601	COH	C3B-C2B	-3.81	1.35	1.40
2	A	601	COH	C4C-C3C	-3.55	1.45	1.51
2	B	601	COH	C4C-C3C	-2.66	1.47	1.51
4	A	605	MAN	C1-C2	2.02	1.57	1.52
2	A	601	COH	CAD-C3D	2.14	1.55	1.52
2	B	601	COH	CO-NB	2.47	2.10	1.97
2	A	601	COH	CMA-C3A	2.53	1.54	1.50
2	B	601	COH	CAD-C3D	2.58	1.56	1.52
2	B	601	COH	CMA-C3A	2.62	1.54	1.50
2	B	601	COH	CMC-C2C	2.64	1.55	1.50
2	B	601	COH	CAA-C2A	2.73	1.54	1.51
2	A	601	COH	CMC-C2C	2.76	1.55	1.50
2	A	601	COH	CO-ND	2.78	2.11	1.97
2	A	601	COH	CAA-C2A	2.81	1.55	1.51
2	B	601	COH	CO-ND	3.16	2.14	1.97
2	A	601	COH	C3B-CAB	3.70	1.55	1.47
2	B	601	COH	C3B-CAB	4.01	1.55	1.47
2	A	601	COH	C4D-C3D	5.00	1.45	1.38
2	A	601	COH	C1B-C2B	5.11	1.45	1.38
2	B	601	COH	C1B-C2B	5.42	1.45	1.38
2	A	601	COH	C3D-C2D	5.56	1.54	1.37
2	B	601	COH	C4D-C3D	5.57	1.45	1.38
2	B	601	COH	C1D-C2D	5.65	1.45	1.38
2	A	601	COH	C1D-C2D	5.67	1.46	1.38
2	B	601	COH	C3D-C2D	5.84	1.55	1.37

All (19) bond angle outliers are listed below:

Mol	Chain	Res	Type	Atoms	Z	Observed(°)	Ideal(°)
2	B	601	COH	C3C-C4C-NC	-3.22	106.55	109.03
2	A	601	COH	CBA-CAA-C2A	-2.94	108.92	114.28

Continued on next page...

Continued from previous page...

Mol	Chain	Res	Type	Atoms	Z	Observed(°)	Ideal(°)
2	B	601	COH	CHC-C4B-C3B	-2.58	126.08	129.55
4	B	604	MAN	O2-C2-C3	-2.28	105.70	110.17
4	A	605	MAN	O2-C2-C3	-2.25	105.76	110.17
2	B	601	COH	C4B-C3B-C2B	2.20	107.42	104.13
2	B	601	COH	CAD-CBD-CGD	2.37	116.72	112.66
2	A	601	COH	C4B-C3B-C2B	2.47	107.83	104.13
3	B	607	NAG	C1-C2-N2	2.49	114.74	110.49
4	B	604	MAN	C1-O5-C5	2.84	116.07	112.17
3	B	607	NAG	C2-N2-C7	4.33	129.26	122.94
2	B	601	COH	CHD-C4C-NC	9.90	124.83	110.17
2	A	601	COH	CHB-C4A-NA	10.02	125.01	110.17
2	A	601	COH	CHD-C4C-NC	10.64	125.92	110.17
2	B	601	COH	CHB-C4A-NA	10.71	126.03	110.17
2	A	601	COH	CHC-C1C-NC	10.81	126.17	110.17
2	A	601	COH	CHA-C1A-NA	11.09	126.59	110.17
2	B	601	COH	CHC-C1C-NC	11.11	126.62	110.17
2	B	601	COH	CHA-C1A-NA	11.58	127.32	110.17

There are no chirality outliers.

There are no torsion outliers.

All (2) ring outliers are listed below:

Mol	Chain	Res	Type	Atoms
4	A	605	MAN	C1-C2-C3-C4-C5-O5
4	B	604	MAN	C1-C2-C3-C4-C5-O5

7 monomers are involved in 14 short contacts:

Mol	Chain	Res	Type	Clashes	Symm-Clashes
2	A	601	COH	6	0
6	A	610	EDO	1	0
6	A	615	EDO	1	0
2	B	601	COH	3	0
3	B	606	NAG	1	0
3	B	607	NAG	1	0
6	B	611	EDO	1	0

5.7 Other polymers ⓘ

There are no such residues in this entry.

5.8 Polymer linkage issues ⓘ

There are no chain breaks in this entry.

6 Fit of model and data [i](#)

6.1 Protein, DNA and RNA chains [i](#)

In the following table, the column labelled ‘#RSRZ> 2’ contains the number (and percentage) of RSRZ outliers, followed by percent RSRZ outliers for the chain as percentile scores relative to all X-ray entries and entries of similar resolution. The OWAB column contains the minimum, median, 95th percentile and maximum values of the occupancy-weighted average B-factor per residue. The column labelled ‘Q< 0.9’ lists the number of (and percentage) of residues with an average occupancy less than 0.9.

Mol	Chain	Analysed	<RSRZ>	#RSRZ>2	OWAB(Å ²)	Q<0.9
1	A	551/552 (99%)	-0.04	11 (1%) 65 70	13, 27, 52, 71	0
1	B	551/552 (99%)	-0.20	6 (1%) 80 83	11, 29, 51, 62	0
All	All	1102/1104 (99%)	-0.12	17 (1%) 74 77	11, 28, 51, 71	0

All (17) RSRZ outliers are listed below:

Mol	Chain	Res	Type	RSRZ
1	A	83	LYS	3.9
1	A	115	TYR	3.1
1	B	115	TYR	3.1
1	A	169	LYS	2.9
1	A	107	PHE	2.9
1	A	80	LEU	2.7
1	A	82	LEU	2.6
1	A	96	PHE	2.6
1	A	81	PHE	2.5
1	B	158	ASP	2.4
1	A	158	ASP	2.3
1	B	121	SER	2.3
1	B	409	TYR	2.2
1	A	33	LYS	2.2
1	B	157	ASP	2.1
1	B	160	PRO	2.1
1	A	105(A)	ILE	2.0

6.2 Non-standard residues in protein, DNA, RNA chains [i](#)

In the following table, the Atoms column lists the number of modelled atoms in the group and the number defined in the chemical component dictionary. LLDF column lists the quality of electron density of the group with respect to its neighbouring residues in protein, DNA or RNA chains. The B-factors column lists the minimum, median, 95th percentile and maximum values of B factors

of atoms in the group. The column labelled 'Q< 0.9' lists the number of atoms with occupancy less than 0.9.

Mol	Type	Chain	Res	Atoms	RSCC	RSR	LLDF	B-factors(Å ²)	Q<0.9
1	OAS	A	530	9/10	0.97	0.10	-	18,20,26,30	0
1	OAS	B	530	9/10	0.96	0.10	-	20,24,31,37	0

6.3 Carbohydrates [i](#)

There are no carbohydrates in this entry.

6.4 Ligands [i](#)

In the following table, the Atoms column lists the number of modelled atoms in the group and the number defined in the chemical component dictionary. LLDF column lists the quality of electron density of the group with respect to its neighbouring residues in protein, DNA or RNA chains. The B-factors column lists the minimum, median, 95th percentile and maximum values of B factors of atoms in the group. The column labelled 'Q< 0.9' lists the number of atoms with occupancy less than 0.9.

Mol	Type	Chain	Res	Atoms	RSCC	RSR	LLDF	B-factors(Å ²)	Q<0.9
6	EDO	A	612	4/4	0.81	0.38	24.43	69,69,69,69	0
6	EDO	A	610	4/4	0.64	0.23	15.35	48,50,50,51	0
3	NAG	B	607	14/15	0.76	0.40	10.90	51,67,73,75	0
6	EDO	B	617	4/4	0.89	0.35	9.62	50,51,55,57	0
3	NAG	B	602	14/15	0.85	0.23	7.89	40,54,62,65	0
5	AKR	A	608	5/5	0.78	0.29	7.05	61,63,64,65	0
2	COH	B	601	43/43	0.87	0.21	4.75	36,52,69,71	0
6	EDO	B	611	4/4	0.94	0.16	4.59	37,42,42,45	0
6	EDO	A	615	4/4	0.92	0.16	4.46	42,44,46,47	0
6	EDO	A	613	4/4	0.88	0.15	3.71	42,44,47,51	0
2	COH	A	601	43/43	0.88	0.20	3.69	35,58,63,69	0
6	EDO	A	611	4/4	0.92	0.15	3.15	35,37,38,38	0
6	EDO	B	610	4/4	0.97	0.12	2.47	23,30,34,34	0
6	EDO	B	612	4/4	0.94	0.12	1.86	30,31,32,35	0
6	EDO	B	615	4/4	0.81	0.14	1.79	52,55,57,59	0
6	EDO	B	614	4/4	0.84	0.16	1.70	44,45,45,46	0
6	EDO	A	614	4/4	0.86	0.17	1.63	54,55,58,59	0
7	BOG	B	618	20/20	0.92	0.15	1.41	43,48,52,55	0
3	NAG	A	603	14/15	0.98	0.14	1.39	10,20,31,31	0
5	AKR	B	608	5/5	0.95	0.14	1.06	32,34,39,44	0
5	AKR	A	607	5/5	0.93	0.15	0.71	36,36,43,48	0
3	NAG	A	606	14/15	0.88	0.12	0.56	33,42,46,53	0

Continued on next page...

Continued from previous page...

Mol	Type	Chain	Res	Atoms	RSCC	RSR	LLDF	B-factors(\AA^2)	Q<0.9
6	EDO	A	609	4/4	0.96	0.13	0.20	32,33,34,35	0
6	EDO	B	616	4/4	0.86	0.12	-0.24	50,52,53,54	0
3	NAG	B	605	14/15	0.97	0.10	-0.65	19,25,29,31	0
6	EDO	B	613	4/4	0.61	0.26	-	53,57,62,65	0
3	NAG	B	603	14/15	0.77	0.27	-	64,68,76,77	0
4	MAN	A	605	11/12	0.82	0.16	-	46,51,53,55	0
3	NAG	B	606	14/15	0.94	0.10	-	29,36,43,46	0
3	NAG	A	602	14/15	0.64	0.33	-	52,65,71,71	0
5	AKR	B	609	5/5	0.90	0.26	-	38,43,48,48	0
3	NAG	A	604	14/15	0.88	0.17	-	21,28,38,48	0
4	MAN	B	604	11/12	0.80	0.12	-	51,59,62,63	0

6.5 Other polymers [i](#)

There are no such residues in this entry.