



Full wwPDB X-ray Structure Validation Report ⓘ

Jan 10, 2018 – 04:44 PM EST

PDB ID : 6F74
Title : Crystal structure of VAO-type flavoprotein MtVAO713 from Myceliophthora thermophila C1
Authors : Rozeboom, H.J.; Fraaije, M.W.
Deposited on : 2017-12-07
Resolution : 2.20 Å(reported)

This is a Full wwPDB X-ray Structure Validation Report for a publicly released PDB entry.

We welcome your comments at validation@mail.wwpdb.org

A user guide is available at

<http://wwpdb.org/validation/2016/XrayValidationReportHelp>

with specific help available everywhere you see the ⓘ symbol.

The following versions of software and data (see [references ⓘ](#)) were used in the production of this report:

MolProbity : 4.02b-467
Mogul : 1.7.2 (RC1), CSD as538be (2017)
Xtriage (Phenix) : 1.9-1692
EDS : rb-20030736
Percentile statistics : 20161228.v01 (using entries in the PDB archive December 28th 2016)
Refmac : 5.8.0135
CCP4 : 6.5.0
Ideal geometry (proteins) : Engh & Huber (2001)
Ideal geometry (DNA, RNA) : Parkinson et al. (1996)
Validation Pipeline (wwPDB-VP) : rb-20030736

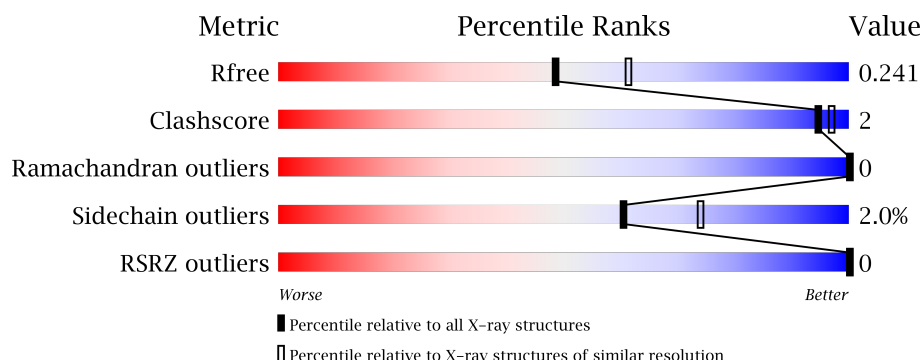
1 Overall quality at a glance ⓘ

The following experimental techniques were used to determine the structure:

X-RAY DIFFRACTION

The reported resolution of this entry is 2.20 Å.

Percentile scores (ranging between 0-100) for global validation metrics of the entry are shown in the following graphic. The table shows the number of entries on which the scores are based.



Metric	Whole archive (#Entries)	Similar resolution (#Entries, resolution range(Å))
R_{free}	100719	4002 (2.20-2.20)
Clashscore	112137	4730 (2.20-2.20)
Ramachandran outliers	110173	4656 (2.20-2.20)
Sidechain outliers	110143	4657 (2.20-2.20)
RSRZ outliers	101464	4033 (2.20-2.20)

The table below summarises the geometric issues observed across the polymeric chains and their fit to the electron density. The red, orange, yellow and green segments on the lower bar indicate the fraction of residues that contain outliers for ≥ 3 , 2, 1 and 0 types of geometric quality criteria. A grey segment represents the fraction of residues that are not modelled. The numeric value for each fraction is indicated below the corresponding segment, with a dot representing fractions $\leq 5\%$. The upper red bar (where present) indicates the fraction of residues that have poor fit to the electron density. The numeric value is given above the bar.

Mol	Chain	Length	Quality of chain
1	A	598	<div> <div>90%</div> <div>5% .</div> </div>
1	B	598	<div> <div>91%</div> <div>. .</div> </div>
1	C	598	<div> <div>90%</div> <div>6% 5%</div> </div>
1	D	598	<div> <div>91%</div> <div>5% .</div> </div>

The following table lists non-polymeric compounds, carbohydrate monomers and non-standard residues in protein, DNA, RNA chains that are outliers for geometric or electron-density-fit crite-

ria:

Mol	Type	Chain	Res	Chirality	Geometry	Clashes	Electron density
4	GOL	C	605	-	-	-	X

2 Entry composition ⓘ

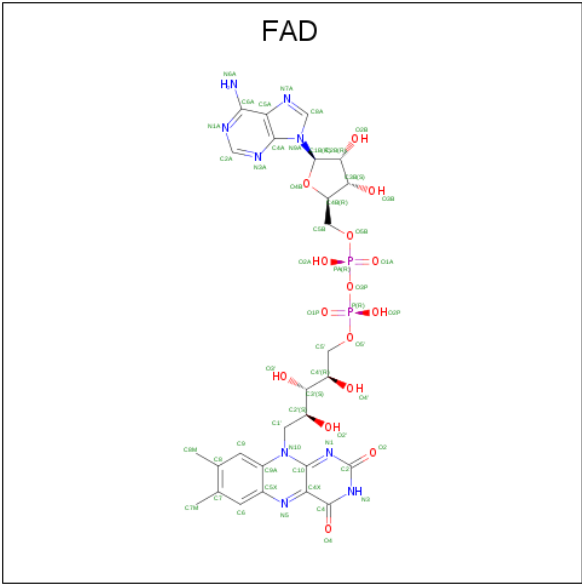
There are 5 unique types of molecules in this entry. The entry contains 19546 atoms, of which 0 are hydrogens and 0 are deuteriums.

In the tables below, the ZeroOcc column contains the number of atoms modelled with zero occupancy, the AltConf column contains the number of residues with at least one atom in alternate conformation and the Trace column contains the number of residues modelled with at most 2 atoms.

- Molecule 1 is a protein called Alcohol oxidase.

Mol	Chain	Residues	Atoms					ZeroOcc	AltConf	Trace
1	A	572	Total	C	N	O	S	0	0	0
			4401	2780	774	830	17			
1	B	572	Total	C	N	O	S	0	0	0
			4401	2780	774	830	17			
1	C	571	Total	C	N	O	S	0	0	0
			4394	2776	773	828	17			
1	D	572	Total	C	N	O	S	0	0	0
			4401	2780	774	830	17			

- Molecule 2 is FLAVIN-ADENINE DINUCLEOTIDE (three-letter code: FAD) (formula: C₂₇H₃₃N₉O₁₅P₂).



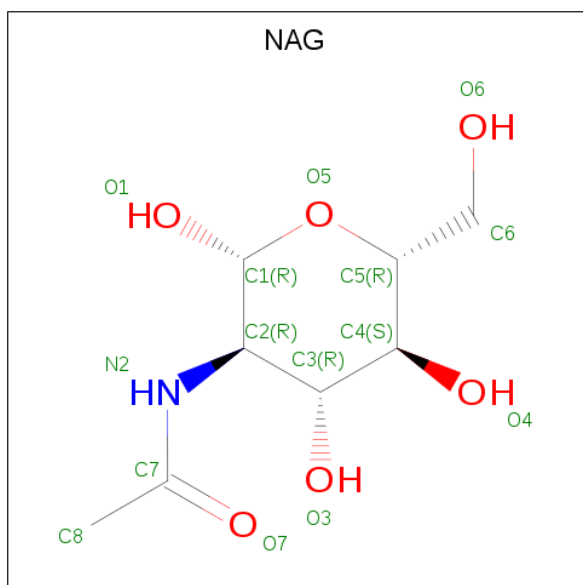
Mol	Chain	Residues	Atoms					ZeroOcc	AltConf
2	A	1	Total	C	N	O	P	0	0
			53	27	9	15	2		
2	B	1	Total	C	N	O	P	0	0
			53	27	9	15	2		

Continued on next page...

Continued from previous page...

Mol	Chain	Residues	Atoms					ZeroOcc	AltConf
2	C	1	Total	C	N	O	P	0	0
			53	27	9	15	2		
2	D	1	Total	C	N	O	P	0	0
			53	27	9	15	2		

- Molecule 3 is N-ACETYL-D-GLUCOSAMINE (three-letter code: NAG) (formula: $C_8H_{15}NO_6$).



Mol	Chain	Residues	Atoms				ZeroOcc	AltConf
3	A	1	Total	C	N	O	0	0
			14	8	1	5		
3	A	1	Total	C	N	O	0	0
			14	8	1	5		
3	A	1	Total	C	N	O	0	0
			14	8	1	5		
3	B	1	Total	C	N	O	0	0
			14	8	1	5		
3	B	1	Total	C	N	O	0	0
			14	8	1	5		
3	B	1	Total	C	N	O	0	0
			14	8	1	5		
3	C	1	Total	C	N	O	0	0
			14	8	1	5		
3	C	1	Total	C	N	O	0	0
			14	8	1	5		
3	C	1	Total	C	N	O	0	0
			14	8	1	5		

Continued on next page...

Continued from previous page...

Mol	Chain	Residues	Atoms				ZeroOcc	AltConf
3	D	1	Total	C	N	O	0	0
			14	8	1	5		
3	D	1	Total	C	N	O	0	0
			14	8	1	5		
3	D	1	Total	C	N	O	0	0
			14	8	1	5		

- Molecule 4 is GLYCEROL (three-letter code: GOL) (formula: $C_3H_8O_3$).



Mol	Chain	Residues	Atoms			ZeroOcc	AltConf
4	A	1	Total	C	O	0	0
			6	3	3		
4	A	1	Total	C	O	0	0
			6	3	3		
4	B	1	Total	C	O	0	0
			6	3	3		
4	C	1	Total	C	O	0	0
			6	3	3		
4	C	1	Total	C	O	0	0
			6	3	3		
4	D	1	Total	C	O	0	0
			6	3	3		
4	D	1	Total	C	O	0	0
			6	3	3		
4	D	1	Total	C	O	0	0
			6	3	3		

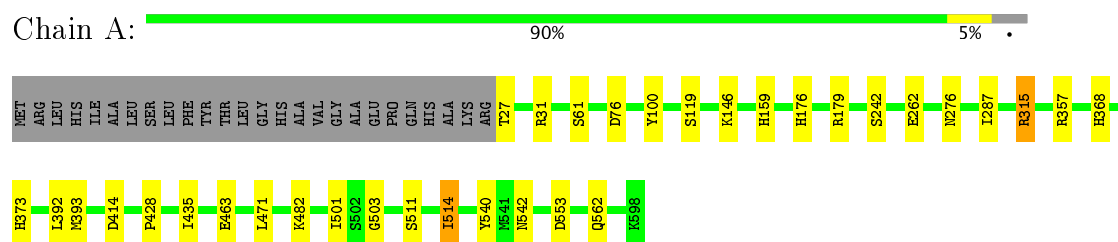
- Molecule 5 is water.

Mol	Chain	Residues	Atoms		ZeroOcc	AltConf
5	A	328	Total 328	O 328	0	0
5	B	424	Total 424	O 424	0	0
5	C	328	Total 328	O 328	0	0
5	D	441	Total 441	O 441	0	0

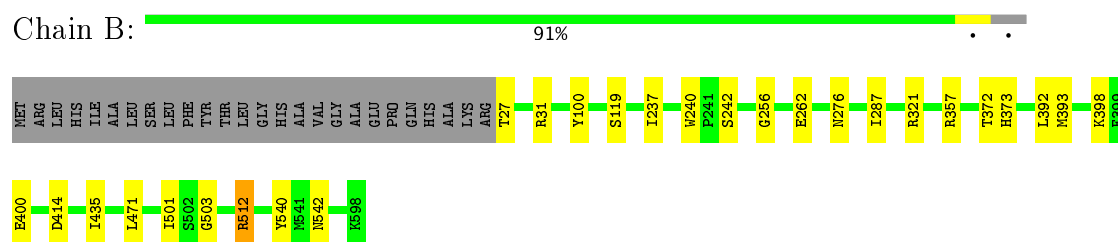
3 Residue-property plots

These plots are drawn for all protein, RNA and DNA chains in the entry. The first graphic for a chain summarises the proportions of the various outlier classes displayed in the second graphic. The second graphic shows the sequence view annotated by issues in geometry and electron density. Residues are color-coded according to the number of geometric quality criteria for which they contain at least one outlier: green = 0, yellow = 1, orange = 2 and red = 3 or more. A red dot above a residue indicates a poor fit to the electron density ($RSRZ > 2$). Stretches of 2 or more consecutive residues without any outlier are shown as a green connector. Residues present in the sample, but not in the model, are shown in grey.

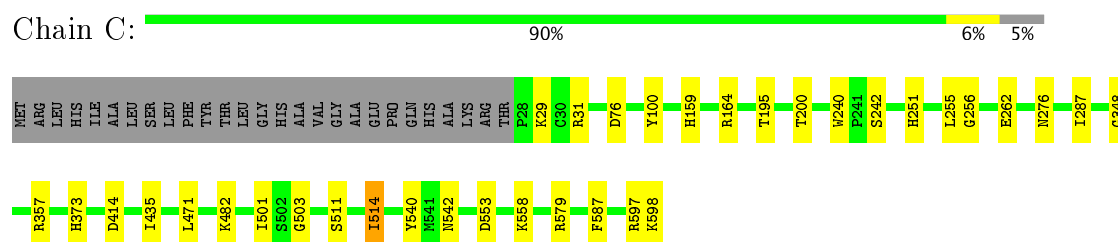
- Molecule 1: Alcohol oxidase



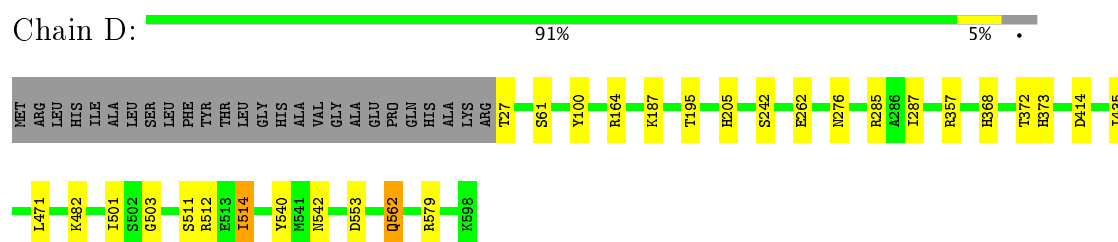
- Molecule 1: Alcohol oxidase



- Molecule 1: Alcohol oxidase



- Molecule 1: Alcohol oxidase



4 Data and refinement statistics

Property	Value	Source
Space group	P 1 21 1	Depositor
Cell constants a, b, c, α , β , γ	83.19Å 108.51Å 135.99Å 90.00° 90.00° 90.00°	Depositor
Resolution (Å)	54.25 – 2.20 54.25 – 2.20	Depositor EDS
% Data completeness (in resolution range)	98.6 (54.25-2.20) 98.6 (54.25-2.20)	Depositor EDS
R_{merge}	0.15	Depositor
R_{sym}	(Not available)	Depositor
$\langle I/\sigma(I) \rangle$ ¹	2.17 (at 2.20Å)	Xtriage
Refinement program	REFMAC 5.8.0158	Depositor
R, R_{free}	0.196 , 0.239 0.200 , 0.241	Depositor DCC
R_{free} test set	5891 reflections (5.12%)	DCC
Wilson B-factor (Å ²)	14.5	Xtriage
Anisotropy	0.670	Xtriage
Bulk solvent k_{sol} (e/Å ³), B_{sol} (Å ²)	(Not available) , (Not available)	EDS
L-test for twinning ²	$\langle L \rangle = 0.49$, $\langle L^2 \rangle = 0.32$	Xtriage
Estimated twinning fraction	0.228 for h,-k,-l	Xtriage
Reported twinning fraction	0.787 for H, K, L 0.213 for -h,-k,l	Depositor
Outliers	0 of 120885 reflections	Xtriage
F_o, F_c correlation	0.92	EDS
Total number of atoms	19546	wwPDB-VP
Average B, all atoms (Å ²)	19.0	wwPDB-VP

Xtriage's analysis on translational NCS is as follows: *The analyses of the Patterson function reveals a significant off-origin peak that is 30.31 % of the origin peak, indicating pseudo translational symmetry. The chance of finding a peak of this or larger height randomly in a structure without pseudo translational symmetry is equal to 1.3354e-03. The detected translational NCS is most likely also responsible for the elevated intensity ratio.*

¹ Intensities estimated from amplitudes.

² Theoretical values of $\langle |L| \rangle$, $\langle L^2 \rangle$ for acentric reflections are 0.5, 0.333 respectively for untwinned datasets, and 0.375, 0.2 for perfectly twinned datasets.

5 Model quality

5.1 Standard geometry

Bond lengths and bond angles in the following residue types are not validated in this section: GOL, NAG, FAD

The Z score for a bond length (or angle) is the number of standard deviations the observed value is removed from the expected value. A bond length (or angle) with $|Z| > 5$ is considered an outlier worth inspection. RMSZ is the root-mean-square of all Z scores of the bond lengths (or angles).

Mol	Chain	Bond lengths		Bond angles	
		RMSZ	$\# Z > 5$	RMSZ	$\# Z > 5$
1	A	0.63	0/4519	0.77	5/6143 (0.1%)
1	B	0.68	0/4519	0.79	3/6143 (0.0%)
1	C	0.62	0/4512	0.78	6/6132 (0.1%)
1	D	0.68	0/4519	0.80	4/6143 (0.1%)
All	All	0.65	0/18069	0.78	18/24561 (0.1%)

There are no bond length outliers.

All (18) bond angle outliers are listed below:

Mol	Chain	Res	Type	Atoms	Z	Observed(°)	Ideal(°)
1	B	357	ARG	NE-CZ-NH2	-9.64	115.48	120.30
1	A	357	ARG	NE-CZ-NH2	-7.68	116.46	120.30
1	D	357	ARG	NE-CZ-NH1	7.56	124.08	120.30
1	C	357	ARG	NE-CZ-NH2	-6.95	116.82	120.30
1	C	31	ARG	NE-CZ-NH1	6.01	123.30	120.30
1	C	76	ASP	CB-CG-OD1	5.77	123.49	118.30
1	D	579	ARG	NE-CZ-NH1	5.53	123.06	120.30
1	C	357	ARG	NE-CZ-NH1	5.39	123.00	120.30
1	C	579	ARG	NE-CZ-NH1	5.38	122.99	120.30
1	B	512	ARG	CB-CG-CD	5.33	125.45	111.60
1	A	357	ARG	NE-CZ-NH1	5.32	122.96	120.30
1	C	164	ARG	NE-CZ-NH2	-5.28	117.66	120.30
1	A	315	ARG	NE-CZ-NH1	5.25	122.93	120.30
1	D	285	ARG	NE-CZ-NH1	5.25	122.93	120.30
1	A	76	ASP	CB-CG-OD1	-5.20	113.62	118.30
1	D	164	ARG	NE-CZ-NH2	-5.12	117.74	120.30
1	A	31	ARG	NE-CZ-NH1	5.10	122.85	120.30
1	B	31	ARG	NE-CZ-NH1	5.04	122.82	120.30

There are no chirality outliers.

There are no planarity outliers.

5.2 Too-close contacts ⓘ

In the following table, the Non-H and H(model) columns list the number of non-hydrogen atoms and hydrogen atoms in the chain respectively. The H(added) column lists the number of hydrogen atoms added and optimized by MolProbity. The Clashes column lists the number of clashes within the asymmetric unit, whereas Symm-Clashes lists symmetry related clashes.

Mol	Chain	Non-H	H(model)	H(added)	Clashes	Symm-Clashes
1	A	4401	0	4238	15	0
1	B	4401	0	4238	13	0
1	C	4394	0	4232	14	0
1	D	4401	0	4238	12	0
2	A	53	0	30	2	0
2	B	53	0	30	1	0
2	C	53	0	30	2	0
2	D	53	0	30	1	0
3	A	42	0	38	0	0
3	B	42	0	38	0	0
3	C	42	0	38	0	0
3	D	42	0	38	1	0
4	A	12	0	16	1	0
4	B	6	0	8	0	0
4	C	12	0	16	0	0
4	D	18	0	24	0	0
5	A	328	0	0	2	0
5	B	424	0	0	3	1
5	C	328	0	0	0	0
5	D	441	0	0	2	1
All	All	19546	0	17282	54	1

The all-atom clashscore is defined as the number of clashes found per 1000 atoms (including hydrogen atoms). The all-atom clashscore for this structure is 2.

All (54) close contacts within the same asymmetric unit are listed below, sorted by their clash magnitude.

Atom-1	Atom-2	Interatomic distance (Å)	Clash overlap (Å)
1:B:398:LYS:HG2	5:B:751:HOH:O	1.76	0.84
1:D:512:ARG:NH1	3:D:603:NAG:O7	2.22	0.72
1:B:321:ARG:NH1	1:B:400:GLU:O	2.23	0.71
1:A:392:LEU:HG	1:A:393:MET:HE2	1.79	0.64

Continued on next page...

Continued from previous page...

Atom-1	Atom-2	Interatomic distance (Å)	Clash overlap (Å)
1:B:237:ILE:HD11	5:B:705:HOH:O	1.99	0.61
1:B:392:LEU:HG	1:B:393:MET:HE2	1.80	0.61
1:A:100:TYR:CE2	2:A:601:FAD:HM82	2.36	0.61
1:D:100:TYR:CE2	2:D:601:FAD:HM82	2.37	0.60
1:B:392:LEU:HG	1:B:393:MET:CE	2.36	0.56
1:C:251:HIS:CE1	1:C:348:GLY:HA2	2.41	0.56
1:A:392:LEU:HG	1:A:393:MET:CE	2.35	0.56
1:B:100:TYR:CE2	2:B:601:FAD:HM82	2.42	0.54
1:A:471:LEU:HD12	1:A:471:LEU:N	2.23	0.54
1:D:482:LYS:HE3	5:D:1090:HOH:O	2.09	0.52
1:C:100:TYR:CE2	2:C:601:FAD:HM82	2.44	0.52
1:C:587:PHE:CZ	1:C:597:ARG:HG2	2.45	0.51
1:C:251:HIS:HE1	1:C:348:GLY:HA2	1.76	0.50
1:D:372:THR:HG23	5:D:1072:HOH:O	2.13	0.48
1:B:471:LEU:HD11	1:B:501:ILE:HD11	1.95	0.48
1:B:372:THR:HG21	5:B:1102:HOH:O	2.14	0.46
1:A:428:PRO:O	5:A:701:HOH:O	2.21	0.46
1:C:471:LEU:HD11	1:C:501:ILE:HD11	1.98	0.44
1:D:262:GLU:CB	1:D:276:ASN:HB3	2.47	0.44
1:B:262:GLU:CB	1:B:276:ASN:HB3	2.47	0.44
1:C:242:SER:HA	1:C:287:ILE:O	2.18	0.44
1:A:262:GLU:CB	1:A:276:ASN:HB3	2.49	0.43
1:A:242:SER:HA	1:A:287:ILE:O	2.18	0.43
1:C:511:SER:O	1:C:514:ILE:HG22	2.18	0.43
1:D:435:ILE:HG22	1:D:503:GLY:HA3	2.01	0.43
1:B:242:SER:HA	1:B:287:ILE:O	2.18	0.43
1:B:435:ILE:HG22	1:B:503:GLY:HA3	2.00	0.43
1:B:540:TYR:CZ	1:B:542:ASN:HB2	2.53	0.43
1:C:540:TYR:CZ	1:C:542:ASN:HB2	2.54	0.43
1:D:511:SER:O	1:D:514:ILE:HG22	2.18	0.43
1:A:540:TYR:CZ	1:A:542:ASN:HB2	2.54	0.43
1:D:540:TYR:CZ	1:D:542:ASN:HB2	2.54	0.43
1:D:242:SER:HA	1:D:287:ILE:O	2.19	0.43
1:A:471:LEU:HD11	1:A:501:ILE:HD12	2.01	0.42
1:A:146:LYS:O	4:A:605:GOL:H2	2.19	0.42
1:C:262:GLU:CB	1:C:276:ASN:HB3	2.49	0.42
1:B:240:TRP:CZ3	1:B:256:GLY:HA3	2.55	0.42
1:A:159:HIS:HE1	2:A:601:FAD:C7M	2.33	0.42
1:C:29:LYS:CE	1:C:598:LYS:OXT	2.68	0.42
1:C:435:ILE:HG22	1:C:503:GLY:HA3	2.02	0.42
1:D:471:LEU:HD11	1:D:501:ILE:CD1	2.51	0.41

Continued on next page...

Continued from previous page...

Atom-1	Atom-2	Interatomic distance (Å)	Clash overlap (Å)
1:A:511:SER:O	1:A:514:ILE:HG22	2.20	0.41
1:D:471:LEU:HD11	1:D:501:ILE:HD11	2.03	0.41
1:D:562:GLN:HE21	1:D:562:GLN:HB2	1.77	0.41
1:C:159:HIS:HE1	2:C:601:FAD:C7M	2.34	0.41
1:C:240:TRP:CZ3	1:C:256:GLY:HA3	2.56	0.41
1:C:587:PHE:CE2	1:C:597:ARG:HG2	2.56	0.41
1:A:315:ARG:NH2	5:A:729:HOH:O	2.53	0.40
1:A:176:HIS:O	1:A:179:ARG:NH1	2.55	0.40
1:A:435:ILE:HG22	1:A:503:GLY:HA3	2.02	0.40

All (1) symmetry-related close contacts are listed below. The label for Atom-2 includes the symmetry operator and encoded unit-cell translations to be applied.

Atom-1	Atom-2	Interatomic distance (Å)	Clash overlap (Å)
5:B:789:HOH:O	5:D:1009:HOH:O[1_655]	2.17	0.03

5.3 Torsion angles ⓘ

5.3.1 Protein backbone ⓘ

In the following table, the Percentiles column shows the percent Ramachandran outliers of the chain as a percentile score with respect to all X-ray entries followed by that with respect to entries of similar resolution.

The Analysed column shows the number of residues for which the backbone conformation was analysed, and the total number of residues.

Mol	Chain	Analysed	Favoured	Allowed	Outliers	Percentiles	
1	A	570/598 (95%)	548 (96%)	22 (4%)	0	100	100
1	B	570/598 (95%)	547 (96%)	23 (4%)	0	100	100
1	C	569/598 (95%)	546 (96%)	23 (4%)	0	100	100
1	D	570/598 (95%)	548 (96%)	22 (4%)	0	100	100
All	All	2279/2392 (95%)	2189 (96%)	90 (4%)	0	100	100

There are no Ramachandran outliers to report.

5.3.2 Protein sidechains ⓘ

In the following table, the Percentiles column shows the percent sidechain outliers of the chain as a percentile score with respect to all X-ray entries followed by that with respect to entries of similar resolution.

The Analysed column shows the number of residues for which the sidechain conformation was analysed, and the total number of residues.

Mol	Chain	Analysed	Rotameric	Outliers	Percentiles	
1	A	460/480 (96%)	449 (98%)	11 (2%)	54	67
1	B	460/480 (96%)	455 (99%)	5 (1%)	78	88
1	C	459/480 (96%)	450 (98%)	9 (2%)	60	74
1	D	460/480 (96%)	449 (98%)	11 (2%)	54	67
All	All	1839/1920 (96%)	1803 (98%)	36 (2%)	60	74

All (36) residues with a non-rotameric sidechain are listed below:

Mol	Chain	Res	Type
1	A	27	THR
1	A	61	SER
1	A	119	SER
1	A	368	HIS
1	A	373	HIS
1	A	414	ASP
1	A	463	GLU
1	A	482	LYS
1	A	514	ILE
1	A	553	ASP
1	A	562	GLN
1	B	27	THR
1	B	119	SER
1	B	373	HIS
1	B	414	ASP
1	B	512	ARG
1	C	195	THR
1	C	200	THR
1	C	255	LEU
1	C	373	HIS
1	C	414	ASP
1	C	482	LYS
1	C	514	ILE
1	C	553	ASP

Continued on next page...

Continued from previous page...

Mol	Chain	Res	Type
1	C	558	LYS
1	D	27	THR
1	D	61	SER
1	D	187	LYS
1	D	195	THR
1	D	205	HIS
1	D	368	HIS
1	D	373	HIS
1	D	414	ASP
1	D	514	ILE
1	D	553	ASP
1	D	562	GLN

Some sidechains can be flipped to improve hydrogen bonding and reduce clashes. All (13) such sidechains are listed below:

Mol	Chain	Res	Type
1	A	82	ASN
1	A	562	GLN
1	B	82	ASN
1	B	148	HIS
1	B	340	GLN
1	C	82	ASN
1	C	251	HIS
1	C	264	GLN
1	C	280	ASN
1	C	449	ASN
1	D	42	ASN
1	D	205	HIS
1	D	562	GLN

5.3.3 RNA ⓘ

There are no RNA molecules in this entry.

5.4 Non-standard residues in protein, DNA, RNA chains ⓘ

There are no non-standard protein/DNA/RNA residues in this entry.

5.5 Carbohydrates [i](#)

There are no carbohydrates in this entry.

5.6 Ligand geometry [i](#)

24 ligands are modelled in this entry.

In the following table, the Counts columns list the number of bonds (or angles) for which Mogul statistics could be retrieved, the number of bonds (or angles) that are observed in the model and the number of bonds (or angles) that are defined in the Chemical Component Dictionary. The Link column lists molecule types, if any, to which the group is linked. The Z score for a bond length (or angle) is the number of standard deviations the observed value is removed from the expected value. A bond length (or angle) with $|Z| > 2$ is considered an outlier worth inspection. RMSZ is the root-mean-square of all Z scores of the bond lengths (or angles).

Mol	Type	Chain	Res	Link	Bond lengths			Bond angles		
					Counts	RMSZ	# Z > 2	Counts	RMSZ	# Z > 2
2	FAD	A	601	-	51,58,58	1.44	8 (15%)	54,89,89	2.12	11 (20%)
3	NAG	A	602	1,3	14,14,15	0.40	0	15,19,21	1.53	3 (20%)
3	NAG	A	603	3	14,14,15	0.36	0	15,19,21	1.04	1 (6%)
3	NAG	A	604	1	14,14,15	0.58	0	15,19,21	1.47	2 (13%)
4	GOL	A	605	-	5,5,5	0.37	0	5,5,5	0.88	0
4	GOL	A	606	-	5,5,5	0.29	0	5,5,5	0.56	0
2	FAD	B	601	-	51,58,58	1.50	10 (19%)	54,89,89	2.26	14 (25%)
3	NAG	B	602	1,3	14,14,15	0.49	0	15,19,21	3.07	3 (20%)
3	NAG	B	603	3	14,14,15	0.56	0	15,19,21	1.18	0
3	NAG	B	604	1	14,14,15	0.71	0	15,19,21	0.75	0
4	GOL	B	605	-	5,5,5	0.19	0	5,5,5	0.51	0
2	FAD	C	601	-	51,58,58	1.45	10 (19%)	54,89,89	2.23	13 (24%)
3	NAG	C	602	1,3	14,14,15	0.44	0	15,19,21	1.84	5 (33%)
3	NAG	C	603	3	14,14,15	0.39	0	15,19,21	1.09	1 (6%)
3	NAG	C	604	1	14,14,15	0.41	0	15,19,21	1.23	1 (6%)
4	GOL	C	605	-	5,5,5	0.36	0	5,5,5	0.55	0
4	GOL	C	606	-	5,5,5	0.31	0	5,5,5	0.35	0
2	FAD	D	601	-	51,58,58	1.41	10 (19%)	54,89,89	2.12	13 (24%)
3	NAG	D	602	1,3	14,14,15	0.42	0	15,19,21	1.16	2 (13%)
3	NAG	D	603	3	14,14,15	0.44	0	15,19,21	0.75	0
3	NAG	D	604	1	14,14,15	0.64	0	15,19,21	1.17	0
4	GOL	D	605	-	5,5,5	0.34	0	5,5,5	0.35	0
4	GOL	D	606	-	5,5,5	0.24	0	5,5,5	0.37	0
4	GOL	D	607	-	5,5,5	0.33	0	5,5,5	0.52	0

In the following table, the Chirals column lists the number of chiral outliers, the number of chiral centers analysed, the number of these observed in the model and the number defined in the Chemical Component Dictionary. Similar counts are reported in the Torsion and Rings columns. '-' means no outliers of that kind were identified.

Mol	Type	Chain	Res	Link	Chirals	Torsions	Rings
2	FAD	A	601	-	-	0/28/50/50	0/6/6/6
3	NAG	A	602	1,3	-	0/6/23/26	0/1/1/1
3	NAG	A	603	3	-	0/6/23/26	0/1/1/1
3	NAG	A	604	1	-	0/6/23/26	0/1/1/1
4	GOL	A	605	-	-	0/4/4/4	0/0/0/0
4	GOL	A	606	-	-	0/4/4/4	0/0/0/0
2	FAD	B	601	-	-	0/28/50/50	0/6/6/6
3	NAG	B	602	1,3	-	0/6/23/26	0/1/1/1
3	NAG	B	603	3	-	0/6/23/26	0/1/1/1
3	NAG	B	604	1	-	0/6/23/26	0/1/1/1
4	GOL	B	605	-	-	0/4/4/4	0/0/0/0
2	FAD	C	601	-	-	0/28/50/50	0/6/6/6
3	NAG	C	602	1,3	-	0/6/23/26	0/1/1/1
3	NAG	C	603	3	-	0/6/23/26	0/1/1/1
3	NAG	C	604	1	-	0/6/23/26	0/1/1/1
4	GOL	C	605	-	-	0/4/4/4	0/0/0/0
4	GOL	C	606	-	-	0/4/4/4	0/0/0/0
2	FAD	D	601	-	-	0/28/50/50	0/6/6/6
3	NAG	D	602	1,3	-	0/6/23/26	0/1/1/1
3	NAG	D	603	3	-	0/6/23/26	0/1/1/1
3	NAG	D	604	1	-	0/6/23/26	0/1/1/1
4	GOL	D	605	-	-	0/4/4/4	0/0/0/0
4	GOL	D	606	-	-	0/4/4/4	0/0/0/0
4	GOL	D	607	-	-	0/4/4/4	0/0/0/0

All (38) bond length outliers are listed below:

Mol	Chain	Res	Type	Atoms	Z	Observed(Å)	Ideal(Å)
2	C	601	FAD	C6-C5X	-2.49	1.38	1.41
2	B	601	FAD	C6-C5X	-2.49	1.38	1.41
2	D	601	FAD	C2-N3	-2.31	1.33	1.38
2	D	601	FAD	C6-C5X	-2.18	1.38	1.41
2	B	601	FAD	C2-N3	-2.18	1.33	1.38
2	C	601	FAD	C4X-N5	2.18	1.36	1.33
2	B	601	FAD	C10-N1	2.19	1.36	1.33
2	B	601	FAD	C4-C4X	2.22	1.45	1.41
2	D	601	FAD	O4B-C1B	2.23	1.44	1.41
2	D	601	FAD	C2A-N3A	2.27	1.36	1.32
2	C	601	FAD	O4B-C1B	2.28	1.44	1.41

Continued on next page...

Continued from previous page...

Mol	Chain	Res	Type	Atoms	Z	Observed(Å)	Ideal(Å)
2	C	601	FAD	C10-N1	2.34	1.36	1.33
2	B	601	FAD	C9A-N10	2.36	1.41	1.38
2	A	601	FAD	C10-N1	2.39	1.36	1.33
2	A	601	FAD	C2A-N3A	2.44	1.36	1.32
2	D	601	FAD	C9A-C5X	2.56	1.47	1.42
2	C	601	FAD	C4-C4X	2.57	1.46	1.41
2	C	601	FAD	C9A-C5X	2.58	1.47	1.42
2	B	601	FAD	O4B-C1B	2.58	1.44	1.41
2	A	601	FAD	C5A-C4A	2.61	1.46	1.40
2	D	601	FAD	C5A-C4A	2.73	1.46	1.40
2	B	601	FAD	C5A-C4A	2.87	1.47	1.40
2	B	601	FAD	C9A-C5X	2.87	1.48	1.42
2	D	601	FAD	C9A-N10	2.90	1.42	1.38
2	D	601	FAD	C4X-C10	2.96	1.46	1.41
2	A	601	FAD	C9A-N10	2.99	1.42	1.38
2	C	601	FAD	C8-C7	3.06	1.48	1.41
2	C	601	FAD	C5A-C4A	3.09	1.47	1.40
2	D	601	FAD	C8-C7	3.18	1.49	1.41
2	D	601	FAD	C4-C4X	3.29	1.47	1.41
2	C	601	FAD	C4X-C10	3.31	1.46	1.41
2	A	601	FAD	C8-C7	3.38	1.49	1.41
2	B	601	FAD	C8-C7	3.45	1.49	1.41
2	A	601	FAD	C9A-C5X	3.54	1.49	1.42
2	C	601	FAD	C9A-N10	3.60	1.43	1.38
2	A	601	FAD	C4-C4X	3.64	1.48	1.41
2	A	601	FAD	C4X-C10	3.70	1.47	1.41
2	B	601	FAD	C4X-C10	4.33	1.48	1.41

All (69) bond angle outliers are listed below:

Mol	Chain	Res	Type	Atoms	Z	Observed(°)	Ideal(°)
2	C	601	FAD	N3A-C2A-N1A	-6.72	123.00	128.86
2	B	601	FAD	N3A-C2A-N1A	-6.64	123.07	128.86
2	B	601	FAD	C4-C4X-C10	-6.02	115.09	119.96
2	A	601	FAD	N3A-C2A-N1A	-5.73	123.86	128.86
2	D	601	FAD	N3A-C2A-N1A	-5.73	123.87	128.86
2	C	601	FAD	C4-C4X-C10	-5.00	115.92	119.96
2	A	601	FAD	C4-C4X-C10	-4.95	115.96	119.96
2	D	601	FAD	C4-C4X-C10	-4.78	116.10	119.96
2	B	601	FAD	C4X-C10-N10	-4.55	117.36	120.52
3	A	602	NAG	O5-C1-C2	-4.02	105.88	111.47
2	C	601	FAD	C4X-C10-N10	-3.84	117.85	120.52

Continued on next page...

Continued from previous page...

Mol	Chain	Res	Type	Atoms	Z	Observed(°)	Ideal(°)
2	A	601	FAD	C4X-C4-N3	-3.25	118.86	123.48
3	D	602	NAG	O5-C1-C2	-3.23	106.97	111.47
3	C	602	NAG	O5-C1-C2	-3.07	107.20	111.47
2	D	601	FAD	C4X-C4-N3	-2.88	119.39	123.48
2	C	601	FAD	C4X-C4-N3	-2.77	119.55	123.48
2	A	601	FAD	C4X-C10-N10	-2.72	118.63	120.52
2	D	601	FAD	C4'-C3'-C2'	-2.67	107.67	113.41
3	C	602	NAG	C6-C5-C4	-2.64	106.83	113.00
2	B	601	FAD	C7M-C7-C6	-2.60	113.83	120.34
2	B	601	FAD	C1B-N9A-C4A	-2.49	122.33	126.64
2	C	601	FAD	C7M-C7-C6	-2.41	114.29	120.34
2	B	601	FAD	C4X-C4-N3	-2.34	120.16	123.48
3	A	604	NAG	O5-C1-C2	-2.32	108.24	111.47
2	C	601	FAD	C4A-C5A-N7A	-2.31	107.17	109.41
2	A	601	FAD	C7M-C7-C6	-2.24	114.72	120.34
2	B	601	FAD	C4'-C3'-C2'	-2.23	108.62	113.41
2	D	601	FAD	C7M-C7-C6	-2.20	114.83	120.34
3	C	602	NAG	O6-C6-C5	-2.18	104.02	111.34
2	D	601	FAD	C4X-C10-N10	-2.10	119.06	120.52
2	B	601	FAD	O3B-C3B-C4B	-2.06	105.07	111.09
2	C	601	FAD	O3B-C3B-C4B	-2.00	105.24	111.09
3	D	602	NAG	C1-O5-C5	2.00	114.93	112.17
3	B	602	NAG	C4-C3-C2	2.08	114.07	111.02
2	C	601	FAD	O4'-C4'-C5'	2.15	114.79	110.00
3	C	603	NAG	C1-O5-C5	2.16	115.14	112.17
3	A	602	NAG	C1-C2-N2	2.16	114.18	110.49
3	C	602	NAG	C1-C2-N2	2.26	114.35	110.49
2	D	601	FAD	O3'-C3'-C2'	2.37	114.69	108.82
2	A	601	FAD	C7M-C7-C8	2.43	125.81	120.72
2	B	601	FAD	C10-C4X-N5	2.50	123.47	120.59
2	B	601	FAD	C4-C4X-N5	2.51	121.44	118.68
2	D	601	FAD	C7M-C7-C8	2.52	126.02	120.72
3	C	604	NAG	C1-O5-C5	2.55	115.68	112.17
2	B	601	FAD	C7M-C7-C8	2.57	126.12	120.72
2	B	601	FAD	N6A-C6A-N1A	2.61	123.93	118.77
2	A	601	FAD	C4-C4X-N5	2.61	121.54	118.68
2	C	601	FAD	C4-C4X-N5	2.65	121.59	118.68
3	A	602	NAG	C1-O5-C5	2.73	115.93	112.17
3	B	602	NAG	C3-C4-C5	2.85	115.23	110.22
2	C	601	FAD	C4X-N5-C5X	2.88	119.80	116.76
2	A	601	FAD	N6A-C6A-N1A	3.20	125.11	118.77
2	A	601	FAD	C4X-N5-C5X	3.22	120.16	116.76

Continued on next page...

Continued from previous page...

Mol	Chain	Res	Type	Atoms	Z	Observed(°)	Ideal(°)
3	A	603	NAG	C1-O5-C5	3.22	116.60	112.17
2	C	601	FAD	C7M-C7-C8	3.23	127.49	120.72
2	D	601	FAD	N6A-C6A-N1A	3.48	125.66	118.77
2	D	601	FAD	C4X-N5-C5X	3.79	120.76	116.76
2	D	601	FAD	C4-C4X-N5	3.83	122.87	118.68
3	A	604	NAG	C1-O5-C5	4.03	117.72	112.17
3	C	602	NAG	C1-O5-C5	4.39	118.22	112.17
2	B	601	FAD	C1'-N10-C9A	4.51	122.48	118.35
2	D	601	FAD	C1'-N10-C9A	4.76	122.71	118.35
2	A	601	FAD	C1'-N10-C9A	4.87	122.81	118.35
2	C	601	FAD	C1'-N10-C9A	5.30	123.21	118.35
2	C	601	FAD	C4-N3-C2	7.34	121.58	115.16
2	D	601	FAD	C4-N3-C2	7.50	121.72	115.16
2	B	601	FAD	C4-N3-C2	7.73	121.92	115.16
2	A	601	FAD	C4-N3-C2	8.36	122.47	115.16
3	B	602	NAG	C1-O5-C5	10.36	126.45	112.17

There are no chirality outliers.

There are no torsion outliers.

There are no ring outliers.

6 monomers are involved in 8 short contacts:

Mol	Chain	Res	Type	Clashes	Symm-Clashes
2	A	601	FAD	2	0
4	A	605	GOL	1	0
2	B	601	FAD	1	0
2	C	601	FAD	2	0
2	D	601	FAD	1	0
3	D	603	NAG	1	0

5.7 Other polymers

There are no such residues in this entry.

5.8 Polymer linkage issues

There are no chain breaks in this entry.

6 Fit of model and data [i](#)

6.1 Protein, DNA and RNA chains [i](#)

In the following table, the column labelled ‘#RSRZ> 2’ contains the number (and percentage) of RSRZ outliers, followed by percent RSRZ outliers for the chain as percentile scores relative to all X-ray entries and entries of similar resolution. The OWAB column contains the minimum, median, 95th percentile and maximum values of the occupancy-weighted average B-factor per residue. The column labelled ‘Q< 0.9’ lists the number of (and percentage) of residues with an average occupancy less than 0.9.

Mol	Chain	Analysed	<RSRZ>	#RSRZ>2	OWAB(Å ²)	Q<0.9
1	A	572/598 (95%)	-0.59	0 100 100	18, 22, 29, 36	0
1	B	572/598 (95%)	-0.68	0 100 100	12, 17, 24, 30	0
1	C	571/598 (95%)	-0.61	0 100 100	16, 23, 31, 37	0
1	D	572/598 (95%)	-0.73	0 100 100	11, 16, 24, 29	0
All	All	2287/2392 (95%)	-0.65	0 100 100	11, 20, 28, 37	0

There are no RSRZ outliers to report.

6.2 Non-standard residues in protein, DNA, RNA chains [i](#)

There are no non-standard protein/DNA/RNA residues in this entry.

6.3 Carbohydrates [i](#)

There are no carbohydrates in this entry.

6.4 Ligands [i](#)

In the following table, the Atoms column lists the number of modelled atoms in the group and the number defined in the chemical component dictionary. LLDF column lists the quality of electron density of the group with respect to its neighbouring residues in protein, DNA or RNA chains. The B-factors column lists the minimum, median, 95th percentile and maximum values of B factors of atoms in the group. The column labelled ‘Q< 0.9’ lists the number of atoms with occupancy less than 0.9.

Mol	Type	Chain	Res	Atoms	RSCC	RSR	LLDF	B-factors(Å ²)	Q<0.9
4	GOL	C	605	6/6	0.85	0.20	4.67	27,31,33,36	0
4	GOL	B	605	6/6	0.96	0.13	1.85	17,19,20,21	0

Continued on next page...

Continued from previous page...

Mol	Type	Chain	Res	Atoms	RSCC	RSR	LLDF	B-factors(\AA^2)	Q<0.9
4	GOL	D	606	6/6	0.98	0.10	0.69	18,19,19,20	0
3	NAG	C	604	14/15	0.94	0.11	0.28	11,19,21,21	0
2	FAD	D	601	53/53	0.98	0.09	0.10	2,8,9,9	0
2	FAD	A	601	53/53	0.97	0.10	0.02	4,13,16,17	0
3	NAG	B	602	14/15	0.96	0.10	-0.12	6,11,13,14	0
3	NAG	A	604	14/15	0.96	0.09	-0.19	8,14,17,18	0
2	FAD	B	601	53/53	0.98	0.08	-0.25	3,7,9,10	0
4	GOL	A	606	6/6	0.96	0.09	-0.27	17,18,18,20	0
3	NAG	C	602	14/15	0.95	0.10	-0.30	9,16,18,21	0
2	FAD	C	601	53/53	0.97	0.09	-0.32	4,12,13,14	0
3	NAG	A	602	14/15	0.96	0.09	-0.35	7,12,15,16	0
3	NAG	B	604	14/15	0.96	0.09	-0.60	7,11,14,15	0
4	GOL	D	605	6/6	0.99	0.10	-0.61	11,11,12,13	0
4	GOL	C	606	6/6	0.95	0.10	-0.62	17,17,18,19	0
4	GOL	A	605	6/6	0.96	0.08	-1.13	19,20,20,23	0
3	NAG	D	604	14/15	0.95	0.08	-1.34	7,11,13,13	0
3	NAG	D	602	14/15	0.97	0.07	-1.67	7,11,13,15	0
4	GOL	D	607	6/6	0.98	0.08	-1.68	11,12,12,13	0
3	NAG	D	603	14/15	0.96	0.09	-	17,18,20,22	0
3	NAG	B	603	14/15	0.94	0.12	-	15,17,21,21	0
3	NAG	C	603	14/15	0.95	0.12	-	25,29,32,32	0
3	NAG	A	603	14/15	0.95	0.10	-	18,20,22,23	0

6.5 Other polymers [i](#)

There are no such residues in this entry.